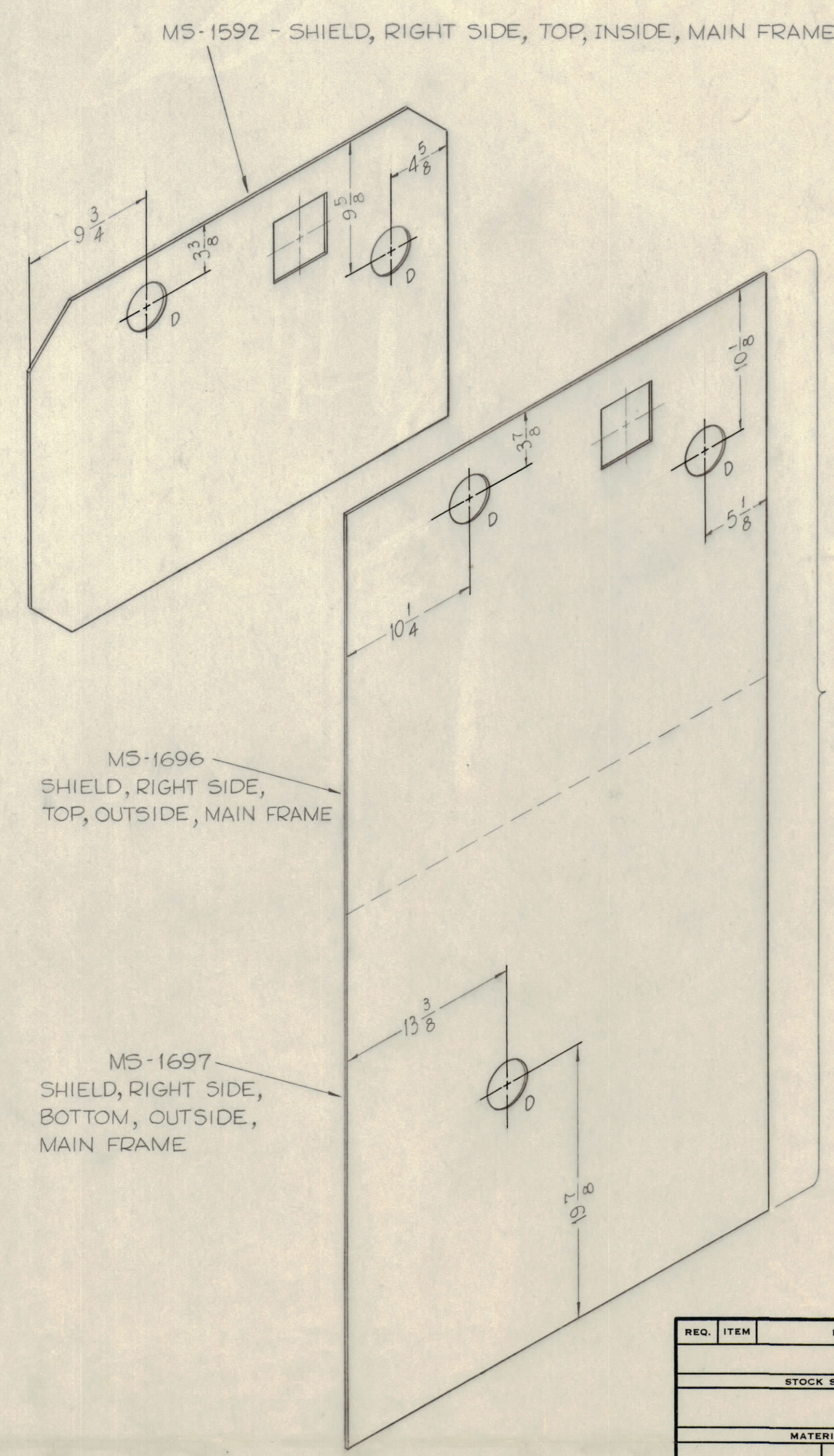
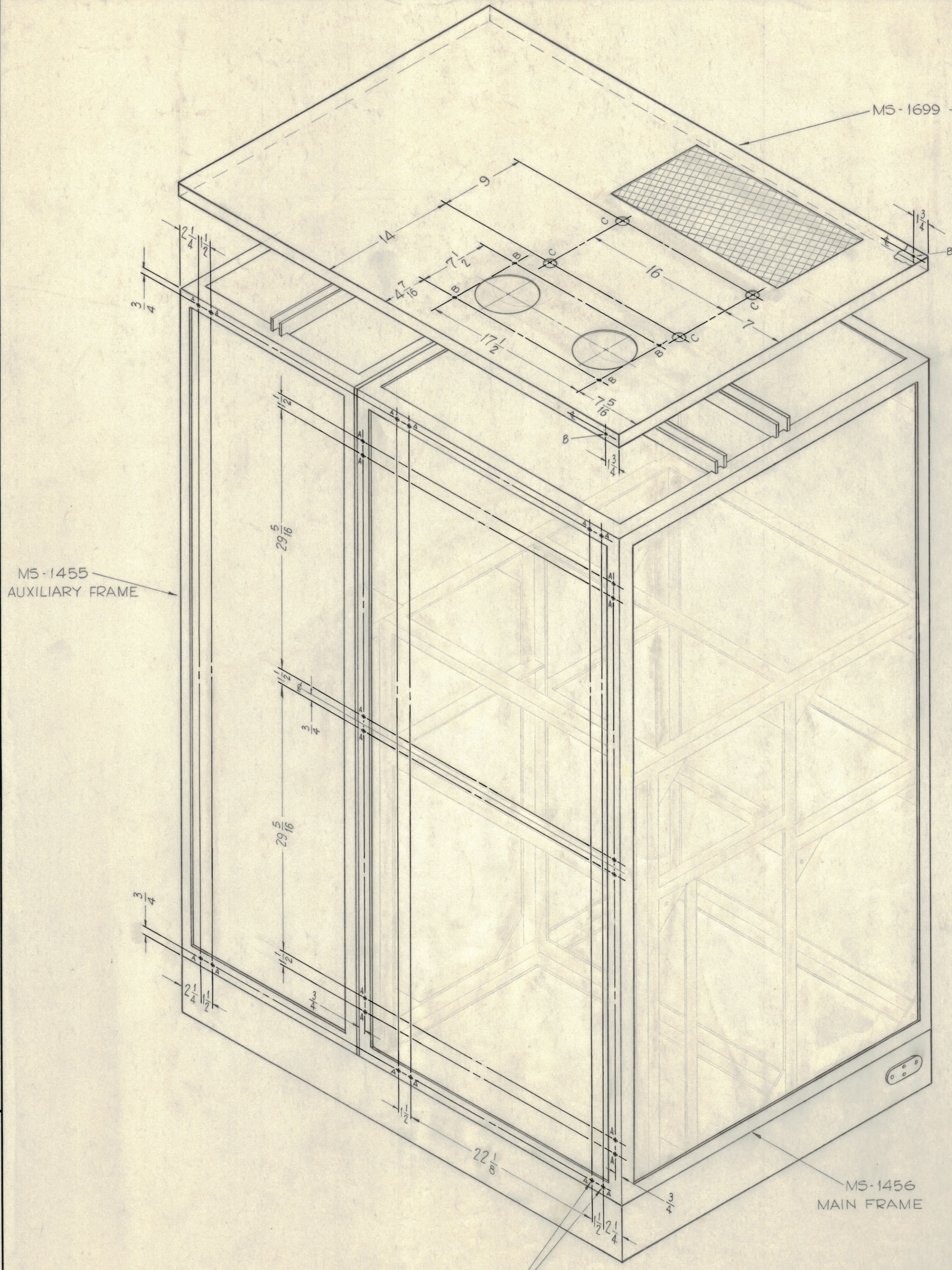
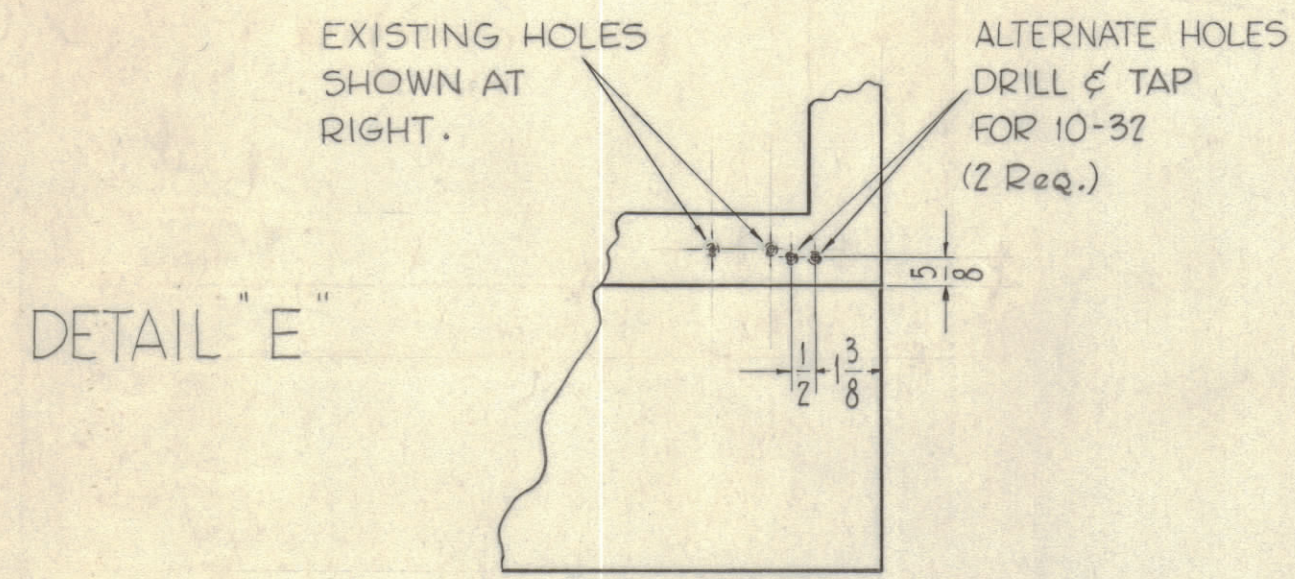


- HOLES:
- A - DRILL AND TAP FOR 10-32 _____ 24 Req.
 - B - $\frac{7}{32}$ DIA. _____ 6 Req.
 - C - $\frac{7}{8}$ DIA. _____ 4 Req.
 - D - 3" (3.00) DIA. _____ 5 Req.



NOTICE TO PERSONS RECEIVING THIS DRAWING

THE TECHNICAL MATERIEL CORPORATION claims proprietary right in the material disclosed herein. This drawing is issued in confidence for engineering information only and may not be reproduced or used to manufacture anything shown hereon without permission from THE TECHNICAL MATERIEL CORPORATION to the user. This drawing is loaned for mutual assistance and is subject to recall at any time.

Property of:
THE TECHNICAL MATERIEL CORPORATION
MAMARONECK, NEW YORK

SEE DETAIL "E" FOR DRILLING OF ALTERNATE HOLES

NOTE: SOME UNITS MAY CONSIST OF (2) PIECES (MS-1696 & MS-1697), OTHERS MAY ONLY CONSIST OF (1) PIECE (MS-1830). APPLY DRILLING PLAN ACCORDINGLY FOR BOTH SITUATIONS AS SHOWN.

SYM	ZONE	DESCRIPTION	DATE	CH. NO.	DRAFTS	CHECKER	ENG. APP.

UNLESS OTHERWISE SPECIFIED: SCALE DO NOT SCALE

DIMENSIONS ARE IN INCHES

TOLERANCES ON FRACTIONS $\pm 1/64$ DECIMALS $\pm .005$ ANGLES $\pm 1/2^\circ$

MAXIMUM ALLOWABLE TOLERANCES HAVE BEEN DETERMINED AND ANY DEVIATIONS WILL BE CAUSE FOR REJECTION. REMOVE ALL BURRS & SHARP EDGES

REQ. PER UNIT	MODEL	SECTION	ASS'Y. NO.	DATE	TYPE & TEMPER	HEAT TREAT. SPEC.	FINISH & SPEC. NO.	ELEC. DES. APP.	MECH. DES. APP.	SHEET	OF
	GPT-10K			3-9-61						1	2

ID-244

A

