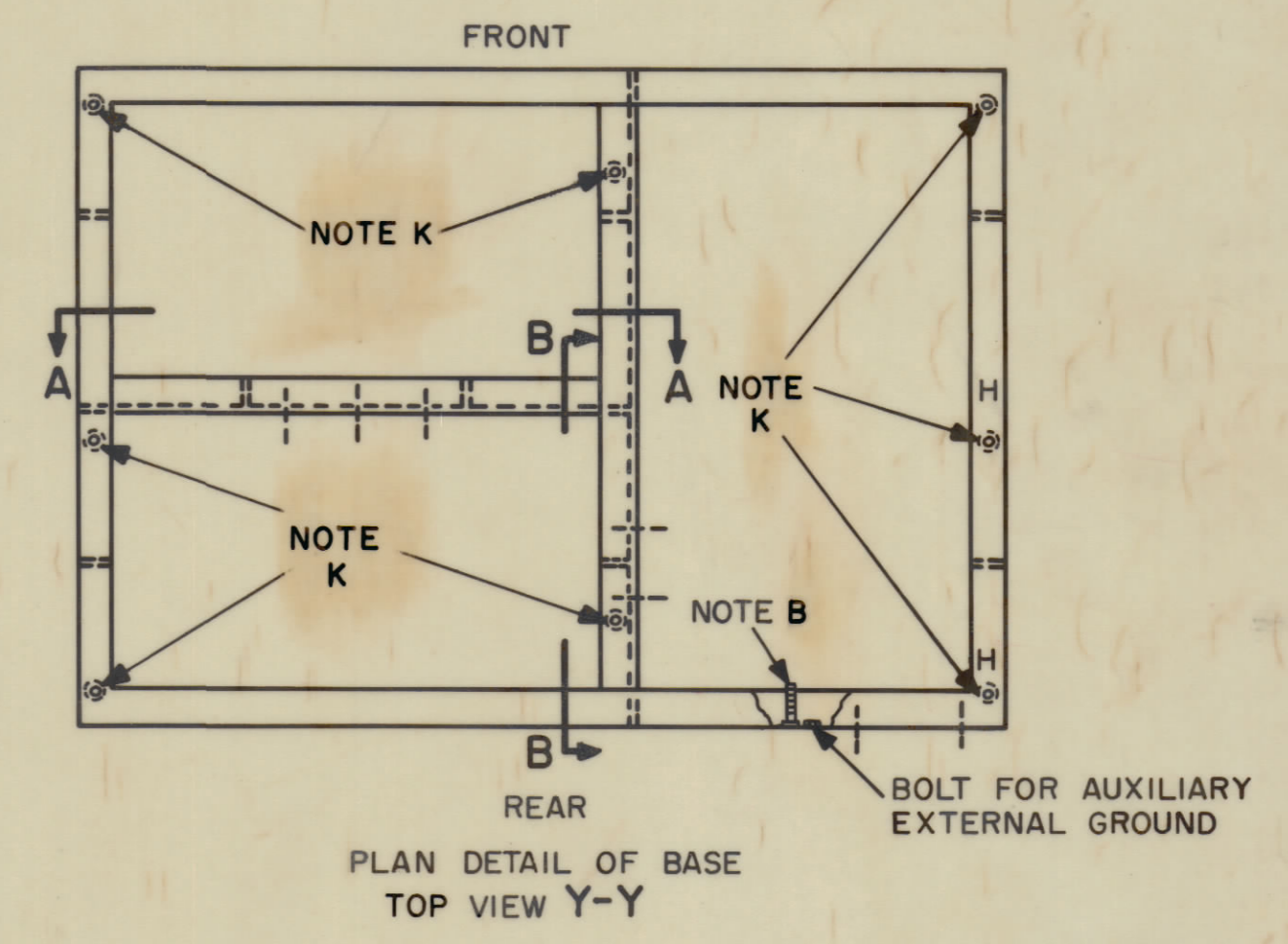
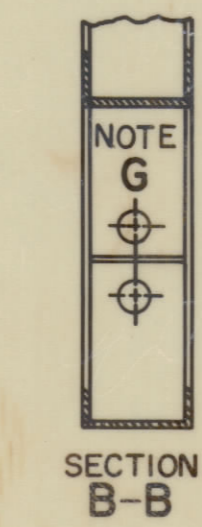
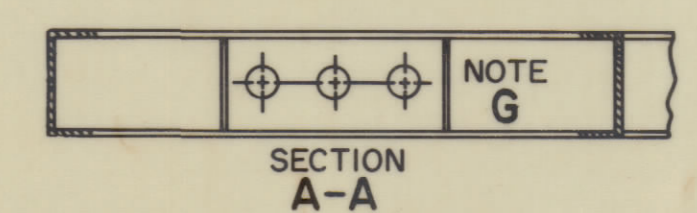
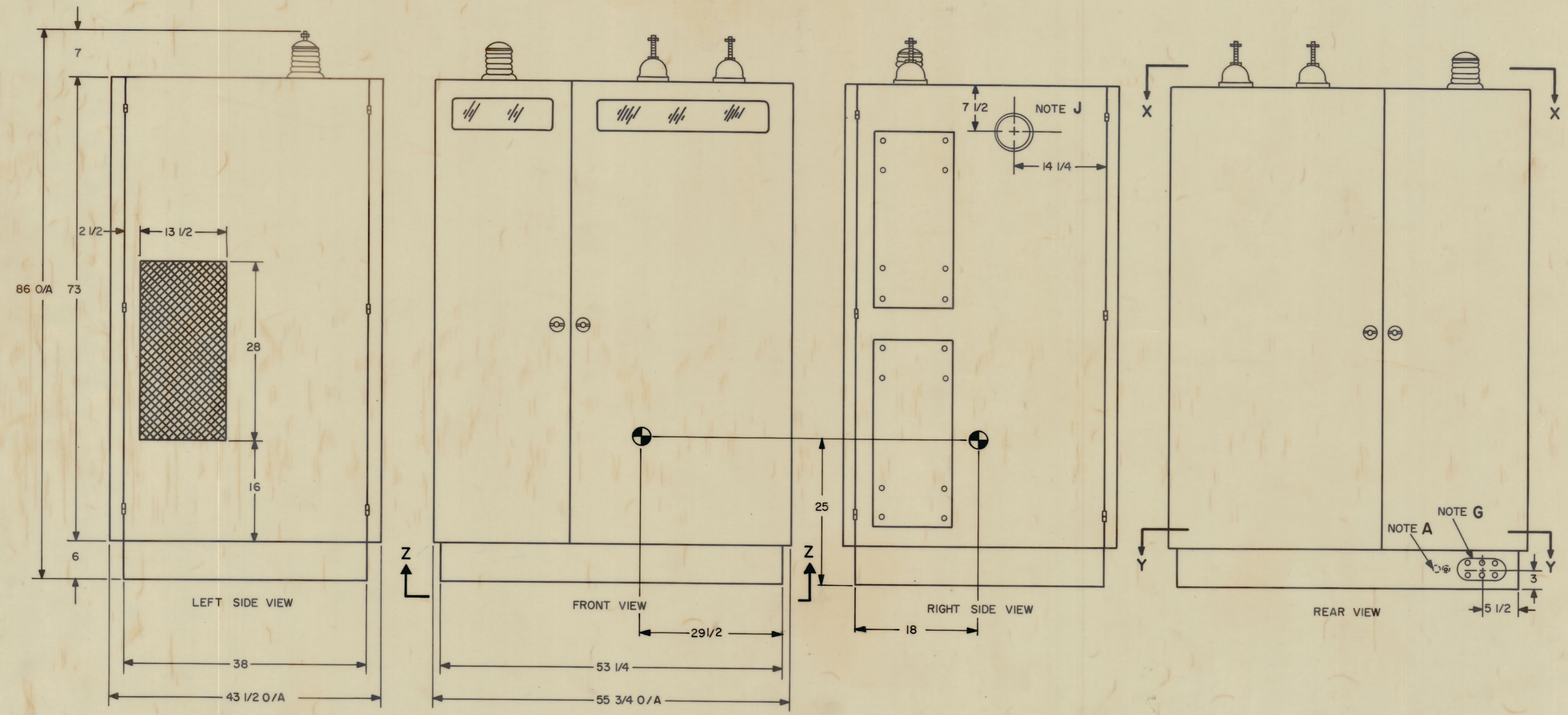
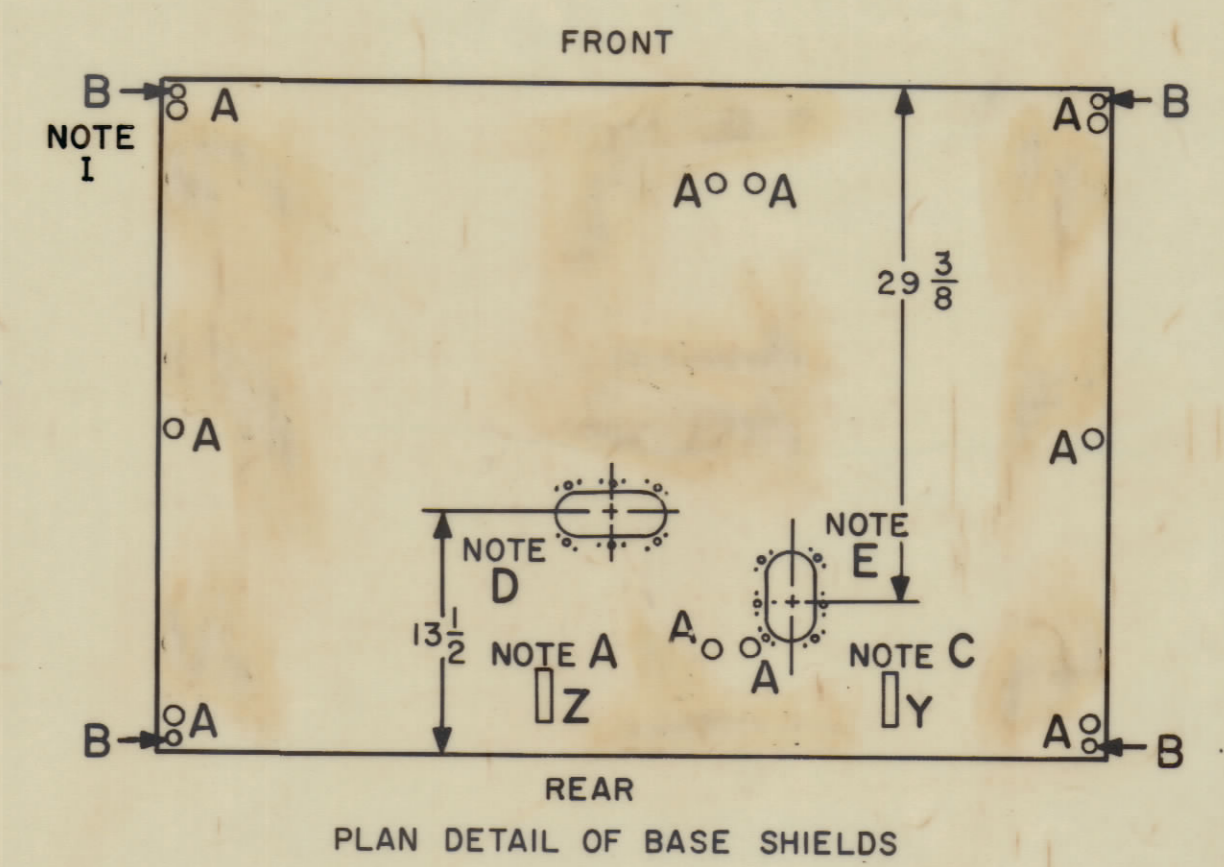
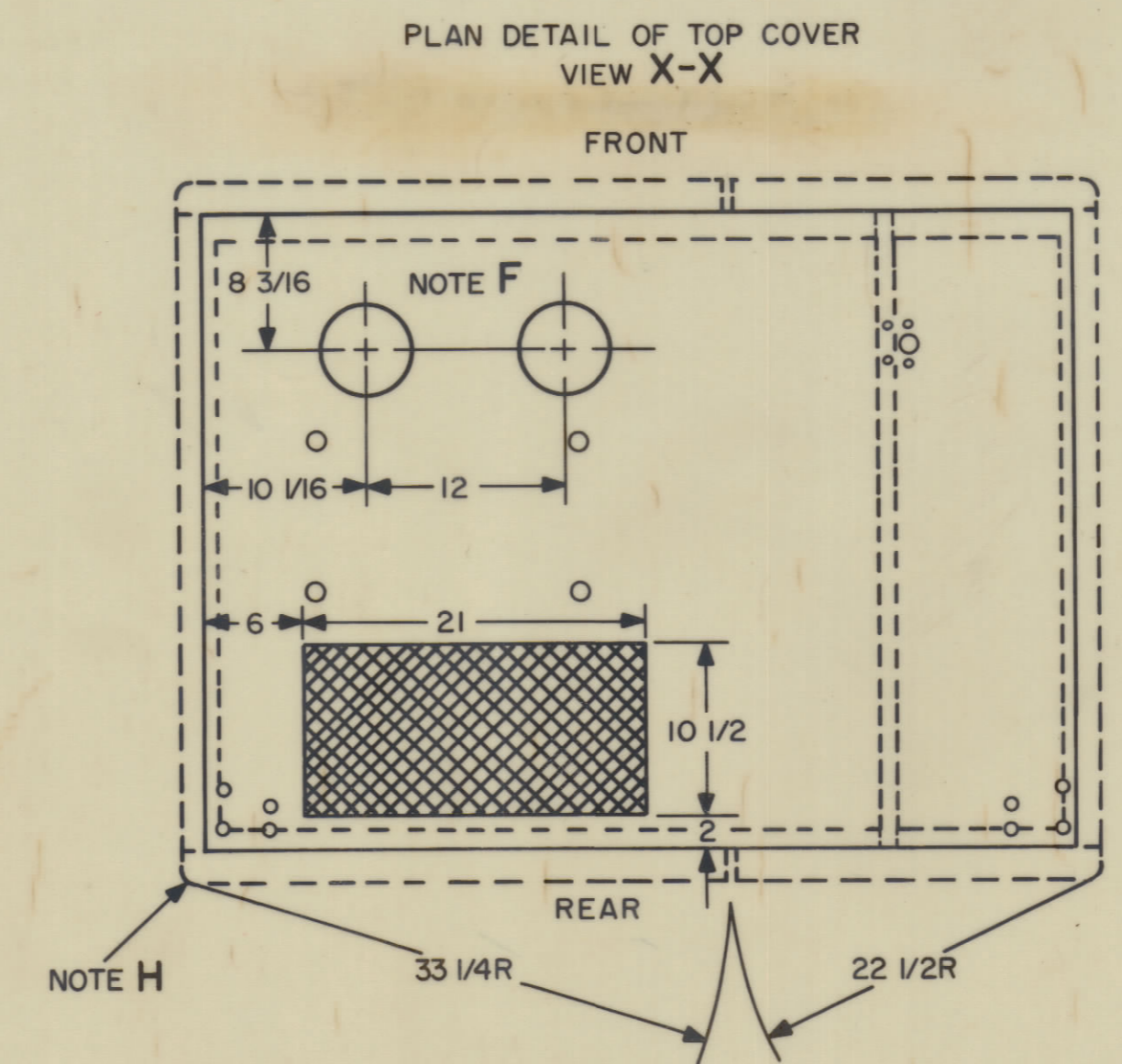
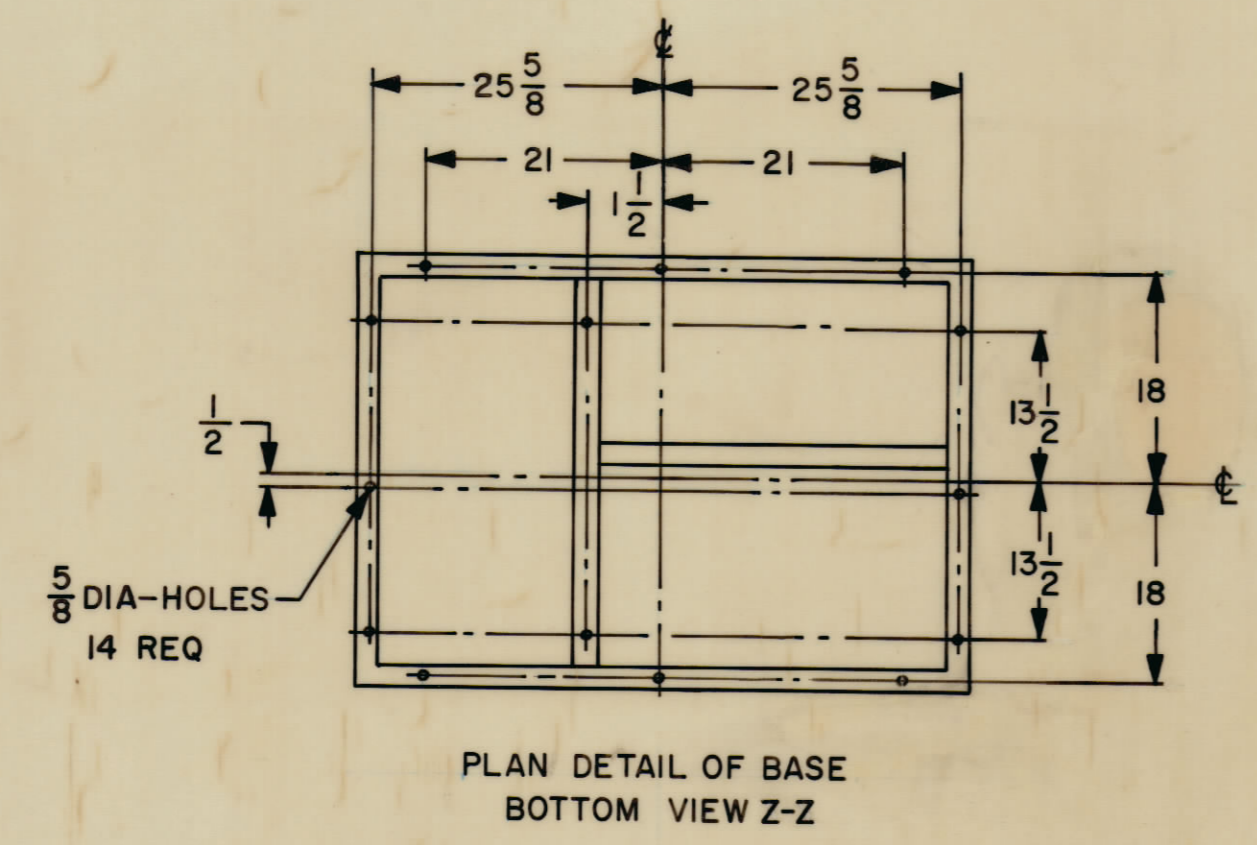


REVISIONS							
SYM	ZONE	DESCRIPTION	DATE	E.M.N.O.	DRAFT	CHKD	APPD



- NOTES:
- A- ACCESS HOLE FOR GROUND LEAD TO MAIN FRAME CHASSIS.
 - B- BOLT FOR TRANSMITTER GROUND.
 - C- ACCESS HOLE FOR GROUND LEAD TO AUXILIARY FRAME CHASSIS.
 - D- ACCESS HOLE FOR 220V 3-PHASE 60 CYCLE POWER INPUT TO MAIN FRAME.
 - E- ACCESS HOLE FOR SIGNAL CONDUCTORS INTERCONNECTING TEST EQUIPMENT ON AUXILIARY FRAME TO CIRCUITS EXTERNAL TO TRANSMITTER.

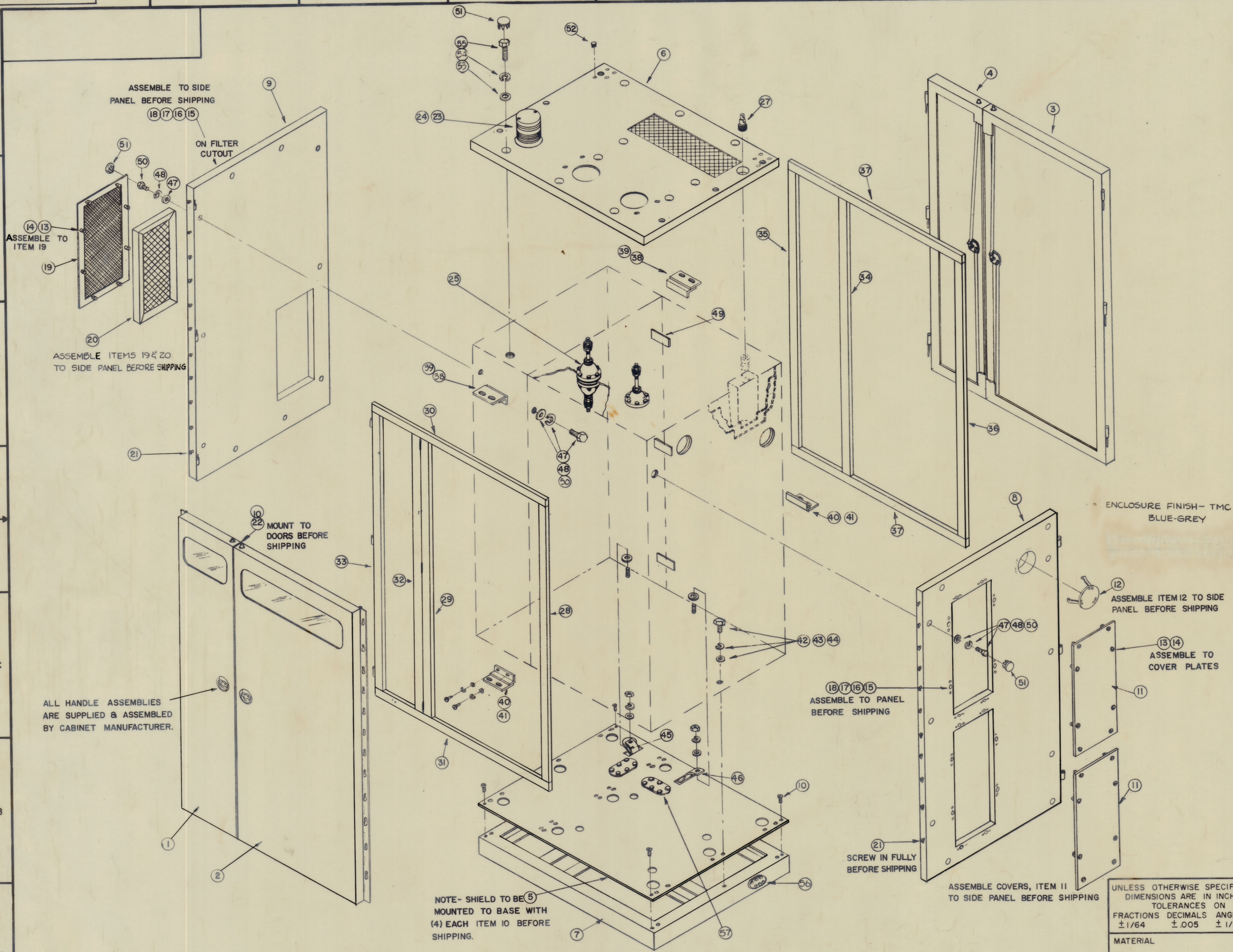
- F- ACCESS HOLES FOR INSULATORS FOR BALANCED ANTENNA.
- G- ACCESS HOLE AUXILIARY TO D AND E.
- H- FRONT AND REAR DOOR SWINGS ARE IDENTICAL.
- I- B HOLES FOR MOUNTING BASE SHIELD TO BASE.
- J- ACCESS HOLE FOR CONNECTIONS BETWEEN UNBALANCED OUTPUT CONNECTOR (OR OUTPUT CIRCUIT OF TRANSMITTER) TO 70-OHM ANTENNA.
- K- A HOLES FOR MOUNTING FRAMES TO BASE.

MAXIMUM ALLOWABLE TOLERANCES HAVE BEEN DETERMINED AND ANY DEVIATIONS WILL BE CAUSE FOR REJECTION.

UNLESS OTHERWISE SPECIFIED DIMENSIONS ARE IN INCHES	FINAL APPROVAL	DATE
FRACTIONS DECIMALS ANGLES	MECH. DES.	DATE
± 1/64 ± .005 ± 1/2°	ELECT. DES.	DATE
MATERIAL	CHECKED	DATE
FINISH	DRAWN	DATE

QTY REQ	ITEM	PART NO.	DESCRIPTION	SYMBOL
BILL OF MATERIAL				
THE TECHNICAL MATERIEL CORP. MAMARONECK, NEW YORK				
TRANSMITTING SET, RADIO, AN/FRT-39H				
ELEVATION AND DETAILS				
APPROVED FOR BUSHIPS		CODE	SIZE	DWG. NO.
CONTRACT NO.		82679	D	ID-332
N600(63133-11-126)63002		SCALE	NONE	ISSUE
				SHEET 1 OF 4

REVISIONS							
SYM	ZONE	DESCRIPTION	DATE	E.M.N.O.	DRAFT	CHKD	APPD
A		ADDED "INSTALLATION MATERIAL LIST" AND "FURNISHED BY"	9/27/65		HJT		



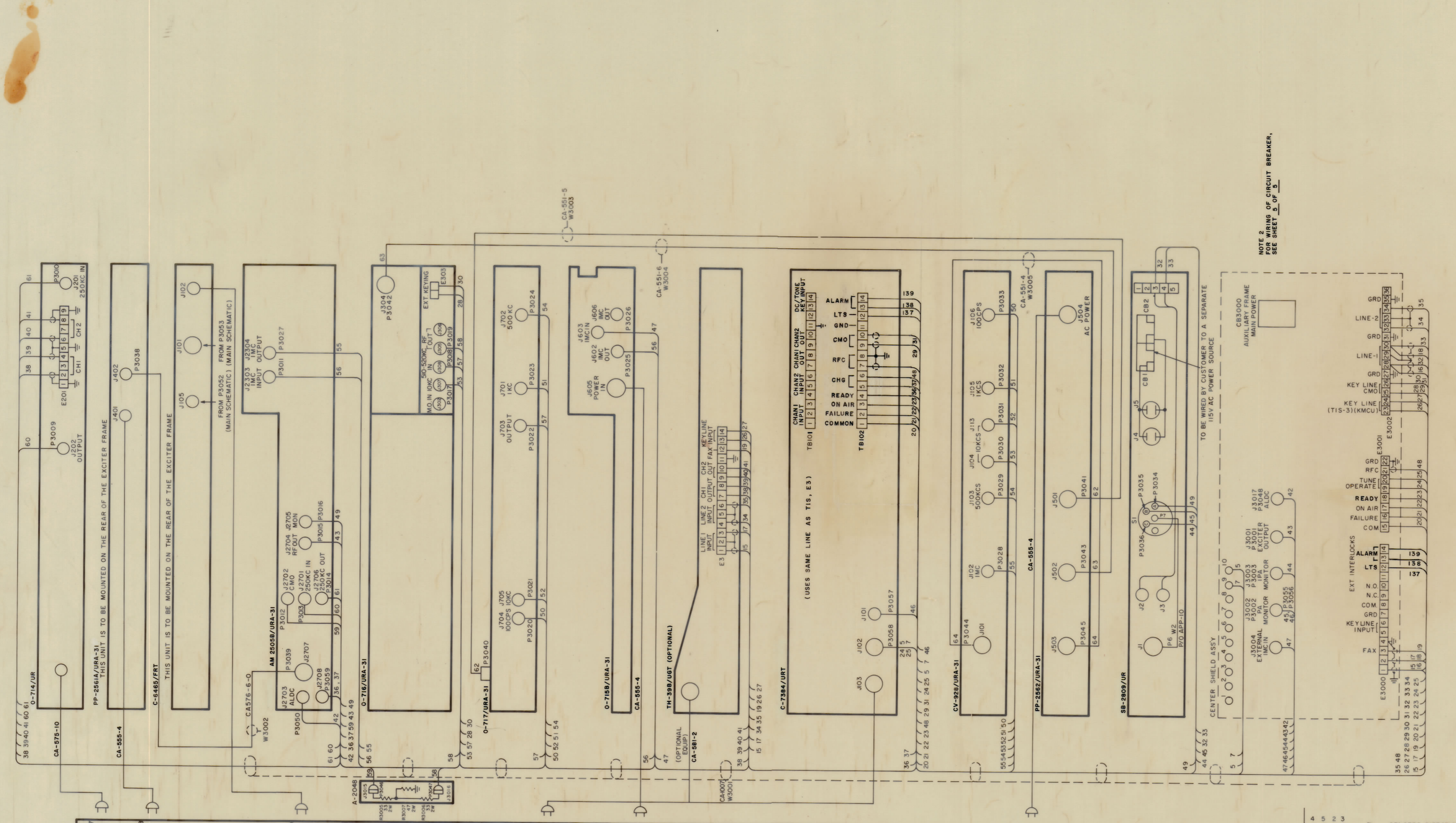
INSTALLATION MATERIAL LIST					FURNISHED BY
2	57	MS-1850-A	PLATE, ACCESS, ALUMINUM		CFM
2	56	MS-1850-S	PLATE, ACCESS, STEEL		CFM
12	55	FW25H8N	WASHER, FLAT		CFM
12	54	LWS20MRN	LOCKWASHER, SPLIT		CFM
12	53	SCHH25208N10	BOLT, HEX HEAD 1/4-20		CFM
8	52	HB-101-3	PLUG, BUTTON 1/2"		CFM
36	51	HB-101-6	PLUG, BUTTON 7/8		CFM
30	50	FW31H8N	WASHER, FLAT		CFM
3	49	MS-1698	BRACKET, TRIM STRIP		CFM
30	48	LWS31MSN	LOCKWASHER, SPLIT 5/16		CFM
30	47	SCHH31185N16	BOLT, HEX HEAD, 5/16-18x1 1/4		CFM
1	46	MS-1753-2-30	GROUND STRAP 30' lq.		CFM
1	45	MS-1753-2-18	GROUND STRAP 18 lq.		CFM
10	44	FW37H8N	WASHER, FLAT 3/8		CFM
10	43	LWS37MSN	LOCKWASHER, SPLIT 3/8		CFM
10	42	SCHH37168N24	BOLT, HEX HEAD 3/8-16 1/2 lq.		CFM
2	41	MS-2123	DOOR LATCH MTG. BRACKET		CFM
2	40	MS-2122	DOOR LATCH STOP, BOTTOM		CFM
2	39	MS-1661	DOOR LATCH MTG. BRACKET, TOP		CFM
2	38	MS-1660	DOOR LATCH STOP, TOP		CFM
2	37	MS-1672	TRIM, REAR, TOP & BOTTOM		CFM
1	36	MS-1671	TRIM, REAR, MAIN FRAME		CFM
1	35	MS-1670	TRIM, REAR, AUX FRAME		CFM
1	34	MS-1669	TRIM, REAR CENTER		CFM
1	33	MS-1920	TRIM, HINGED, LEFT, AUX.		CFM
1	32	MS-1637	TRIM, HINGED, RIGHTSIDE, AUX.		CFM
1	31	MS-1636	TRIM, FRONT, BOTTOM		CFM
1	30	MS-1635	TRIM, FRONT, TOP		CFM
1	29	MS-1634	TRIM, FRONT, LEFT SIDE, MAIN		CFM
1	28	MS-1633	TRIM, FRONT, RIGHTSIDE, MAIN		CFM
1	27	PL-149	CONNECTOR, PLUG, QDS		CFM
-	26	-	DELETED		-
2	25	AX-159	INSULATOR BOWL ASSEMBLY		CFM
1	24	BI-106-1	LAMP, INCANDESCENT		CFM
1	23	AX-124	HV. LAMP SOCKET ASSEMBLY		CFM
2	22	MS-2257	SPACER, DOOR		CFM
22	21	SCB510328N3	SCREW, MACHINE		CFM
1	20	AD-103-1	FILTER, AIR		CFM
1	19	MS-2255	COVER, FILTER, PERFORATED		CFM
48	18	NTH03488N6	NUT, HEX		CFM
48	17	LWS03MRN	LOCKWASHER, SPLIT		CFM
48	16	SCFS03488N6	SCREW, MACHINE		CFM
24	15	FS-102-1	SPRING, 'S' TYPE		CFM
24	14	FS-110-1	STUD, SLOTTED HEAD		CFM
24	13	FS-109-3	RING, STUD RETAINING		CFM
1	12	MS-2258	COVER, UNBAL OUTPUT		CFM
2	11	MS-2256	COVER, FILTER, BLANK		CFM
26	10	SCFS10328N6	SCREW MACHINE, FH-1032x3/8 lq.		CFM
1	9	MS-2117	PANEL, LEFT SIDE, AUX. FRAME		CFM
1	8	MS-2116	PANEL, RIGHT SIDE, MAIN FRAME		CFM
1	7	MS-1458	BASE		CFM
1	6	MS-1699	PANEL, TOP		CFM
1	5	MS-2175	SHIELD, BASE		CFM
1	4	MS-1648	DOOR, REAR, AUX. FRAME		CFM
1	3	MS-1647	DOOR, REAR, MAIN FRAME		CFM
1	2	MS-2118	DOOR, FRONT, MAIN FRAME		CFM
1	1	MS-2119	DOOR, FRONT, AUX. FRAME		CFM

QTY REQ	ITEM	PART NO.	DESCRIPTION	SYMBOL
BILL OF MATERIAL				
UNLESS OTHERWISE SPECIFIED DIMENSIONS ARE IN INCHES TOLERANCES ON FRACTIONS DECIMALS ANGLES ±1/64 ±.005 ±1/2°				
MATERIAL				
FINISH				
APPROVED FOR BUSHIPS				
CONTRACT NO. N600(63133-11-126)63002				
THE TECHNICAL MATERIEL CORP. MAMARONECK, NEW YORK			TRANSMITTING SET, RADIO, AN/FRT-39H EXPLODED ASSEMBLY DRAWING	
CODE	SIZE	DWG. NO.	ISSUE	
82679	D	ID-332	A	
SCALE NONE			SHEET 2 OF 4	

MAXIMUM ALLOWABLE TOLERANCES HAVE BEEN DETERMINED AND ANY DEVIATIONS WILL BE CAUSE FOR REJECTION.

FINAL APPROVAL DATE 5/24/65
 MECH. DES. DATE 5/24/65
 ELECT. DES. DATE 5/24/65
 CHECKED DATE 5/24/65
 DRAWN M. TANTI/LLD DATE 5-21-65

REVISIONS				
SYM	ZONE	DESCRIPTION	DATE	E.M.N.O. DRAFT CHKD APPD



NOTE 2: WIRE UP BY CIRCUIT BREAKER. SEE SHEET 5 OF 5.

NOTES: OBSERVE DETAIL ABOVE BEFORE READING DIAGRAM.
 DENOTES DIRECTION THAT LEAD WILL TRAVEL.
 4 5 3
 23 24 25 26 27 28

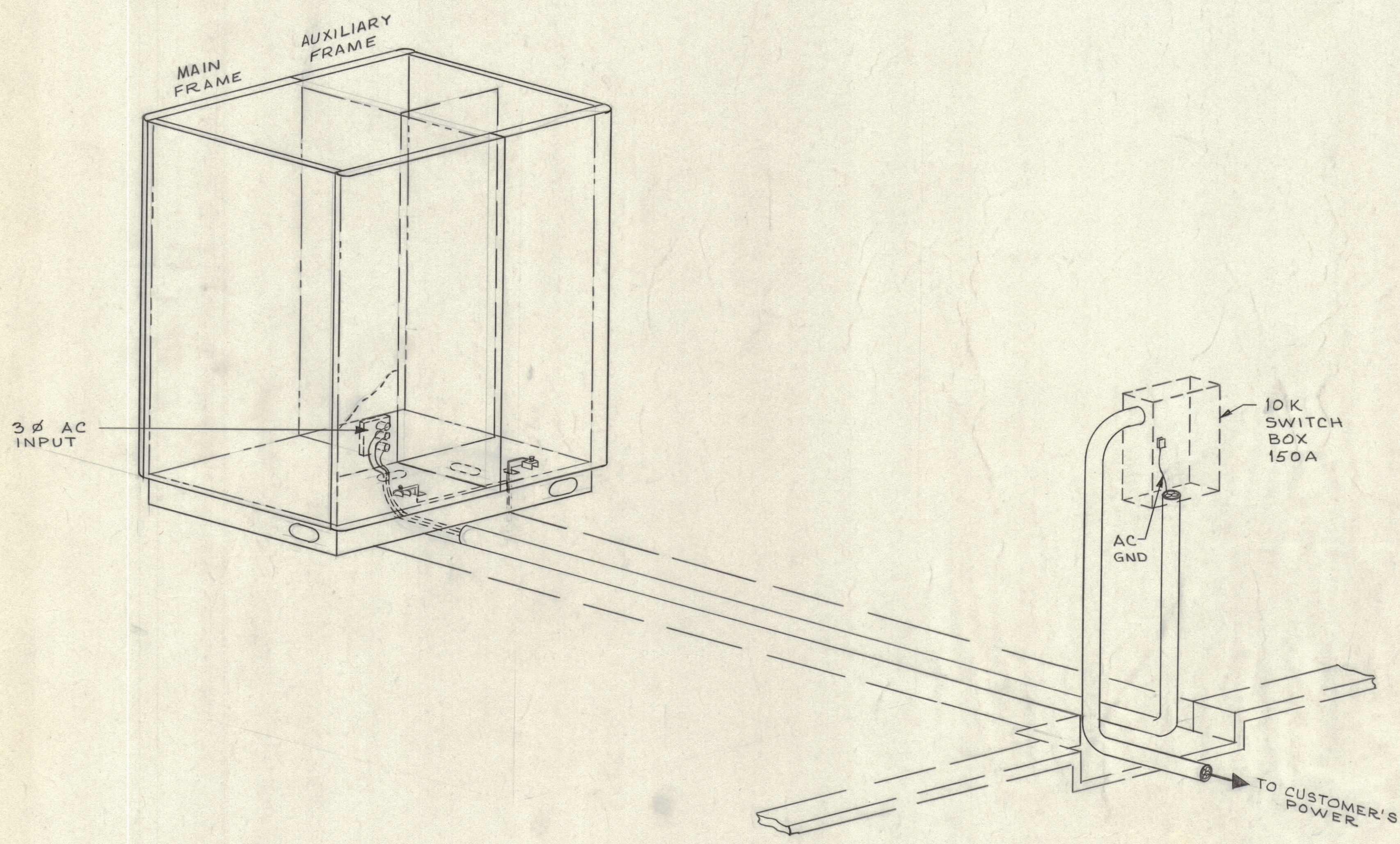
NOTE: MAXIMUM ALLOWABLE TOLERANCES HAVE BEEN DETERMINED AND ANY DEVIATIONS WILL BE CAUSE FOR REJECTION.

NOTE 3: INTERCONNECTING CABLE RUNS AND THE CONDUCTOR GROUPINGS WILL VARY FOR EACH INDIVIDUAL INSTALLATION. REFER TO THE APPLICABLE SHIP PLAN TO DETERMINE THE CORRECT CABLING AND HOOKUP FOR A SPECIFIC SHIP.

QTY REQ	ITEM	PART NO.	DESCRIPTION	SYMBOL
BILL OF MATERIAL				
UNLESS OTHERWISE SPECIFIED DIMENSIONS ARE IN INCHES TOLERANCES ON FRACTIONS DECIMALS ANGLES ±1/64 ±.005 ±1/2°				
FINAL APPROVAL		DATE	THE TECHNICAL MATERIEL CORP. MAMARONECK, NEW YORK TRANSMITTING SET, RADIO, AN/FRT-39H EXCITER FRAME HARNESS DETAIL AND EXTERNAL SIGNAL AND CONTROL CONNECTIONS	
MECH. DES.		DATE		
ELECT. DES.		DATE		
CHECKED		DATE	MATERIAL DRAWN M. TANTILLO 5-21-65	
APPROVED FOR BUSHIPS			CODE	ISSUE
			82679 D	1
CONTRACT NO.		SIZE	DWG. NO.	ISSUE
N600(63133-11-126)63002		SCALE NONE	1D-332	1

SYM		ZONE		DESCRIPTION	DATE	E.M.N.O.	DRAFT	CHKD	APPD
A				REDRAWN W/O CHANGES WAS "C" SIZE	12/21/65		MIT		

REAR VIEW



POWER REQUIREMENTS
 POWER INPUT - 50 A / LEG
 VOLTAGE - 190 - 250 V AC
 PHASE - 3 Ø
 FREQUENCY - 50 / 60 CPS
 HEAT DISSIPATION - 10 KW
 AMBIENT TEMP RANGE - 0° TO 50° C
 INTAKE AIR - 594 CFM
 EXHAUST AIR - 587 CFM

MAXIMUM ALLOWABLE TOLERANCES HAVE BEEN DETERMINED AND ANY DEVIATIONS WILL BE CAUSE FOR REJECTION.

QTY REQ	ITEM	PART NO.	DESCRIPTION	SYMBOL
BILL OF MATERIAL				
UNLESS OTHERWISE SPECIFIED DIMENSIONS ARE IN INCHES TOLERANCES ON FRACTIONS DECIMALS ANGLES ±1/64 ±.005 ± 1/2°			THE TECHNICAL MATERIEL CORP. MAMARONECK, NEW YORK TRANSMITTING SET, RADIO AN / FRT - 39 H INPUT POWER DETAILS	
MATERIAL		FINAL APPROVAL _____ DATE _____ MECH. DES. _____ DATE _____ ELECT. DES. _____ DATE _____ CHECKED _____ DATE _____ DRAWN M J TANTILLO DATE 5-1-65		
FINISH		APPROVED FOR BUSHIPS _____ CONTRACT NO. N600(63133-11-126)63002		
		CODE 82679 D DWG. NO. ID-332 SCALE NONE		
			ISSUE A	