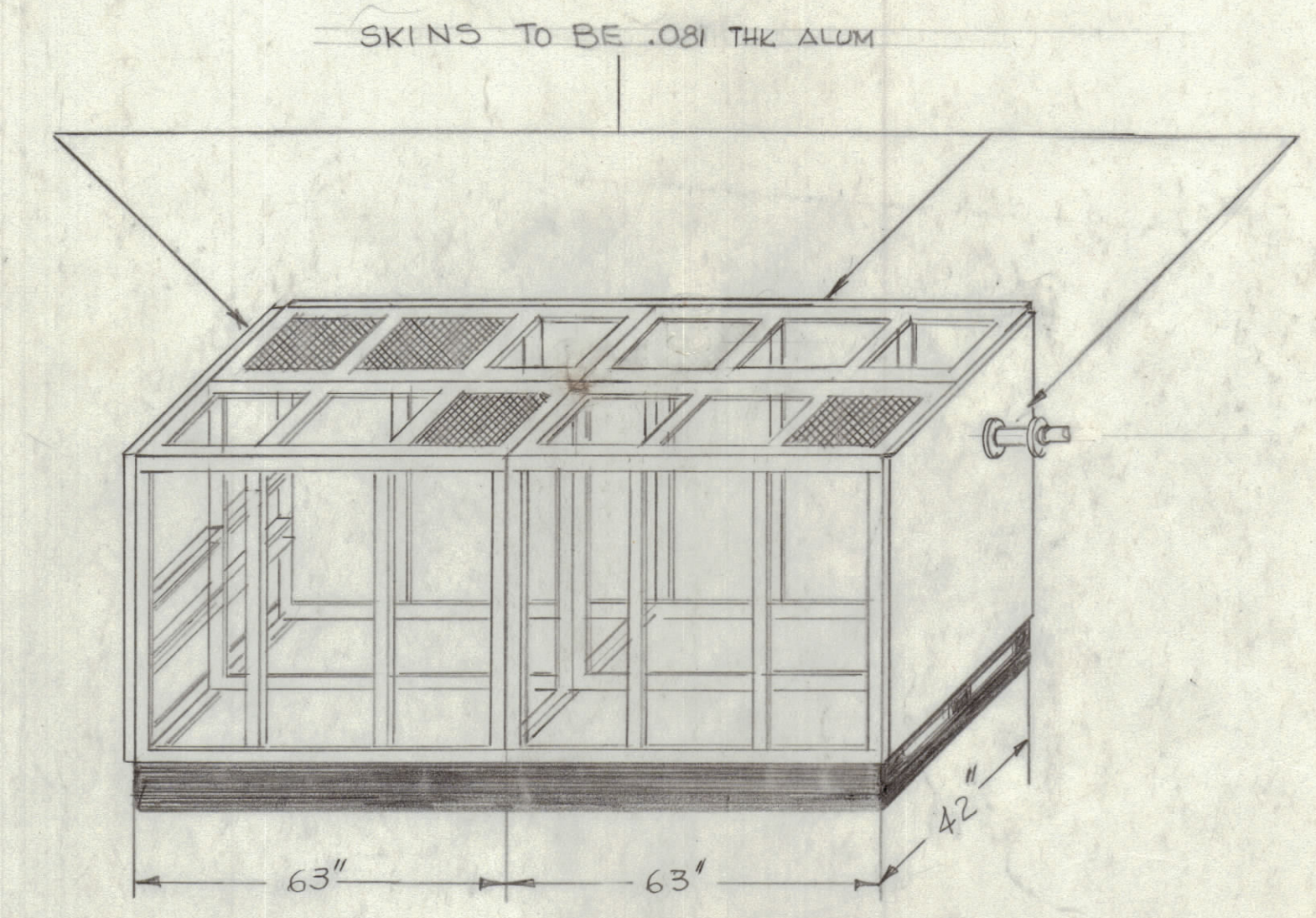
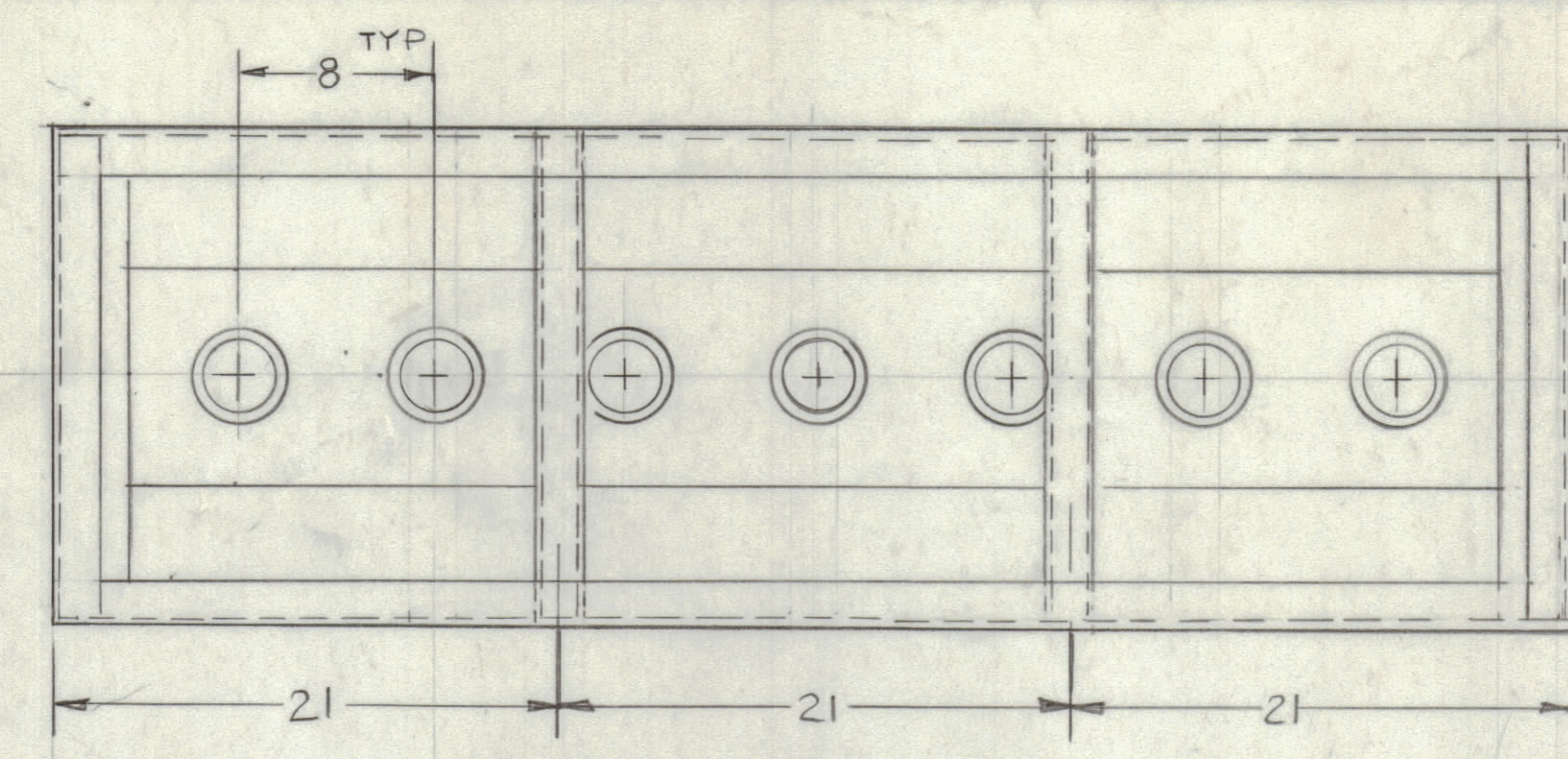


8 7 6 5 4 3 2 1

| REVISIONS |       |      |      |     |                                 |         |          |
|-----------|-------|------|------|-----|---------------------------------|---------|----------|
| E.M.N.O.  | DRAFT | CHKD | ZONE | LTR | DESCRIPTION                     | DATE    | APPROVED |
|           | GPL   |      |      | Ø   | ORIGINAL RELEASE FOR PRODUCTION | 3-20-91 |          |



- 1- CONSTRUCTION 2 X 2 X 1/8 THICK ALUM. EXTRUDED
- 2- MOUNT INSERT AFTER FINISHING
- 3- ALL WELD JOINTS TO BE VEE'D OUT PRIOR TO WELDING
- 4- WELDING TO BE PER MIL-T-5021C, TUNGSTEN INSERT GAS PROCESS
- 5- ALL JOINTS SHOULD BE WELDED INSIDE AND OUTSIDE.
- 6- ALL OUTSIDE WELD TO BE GROUND FLUSH
- 7- OUTSIDE SURFACES TO BE REASONABLY FREE SCRATCHES

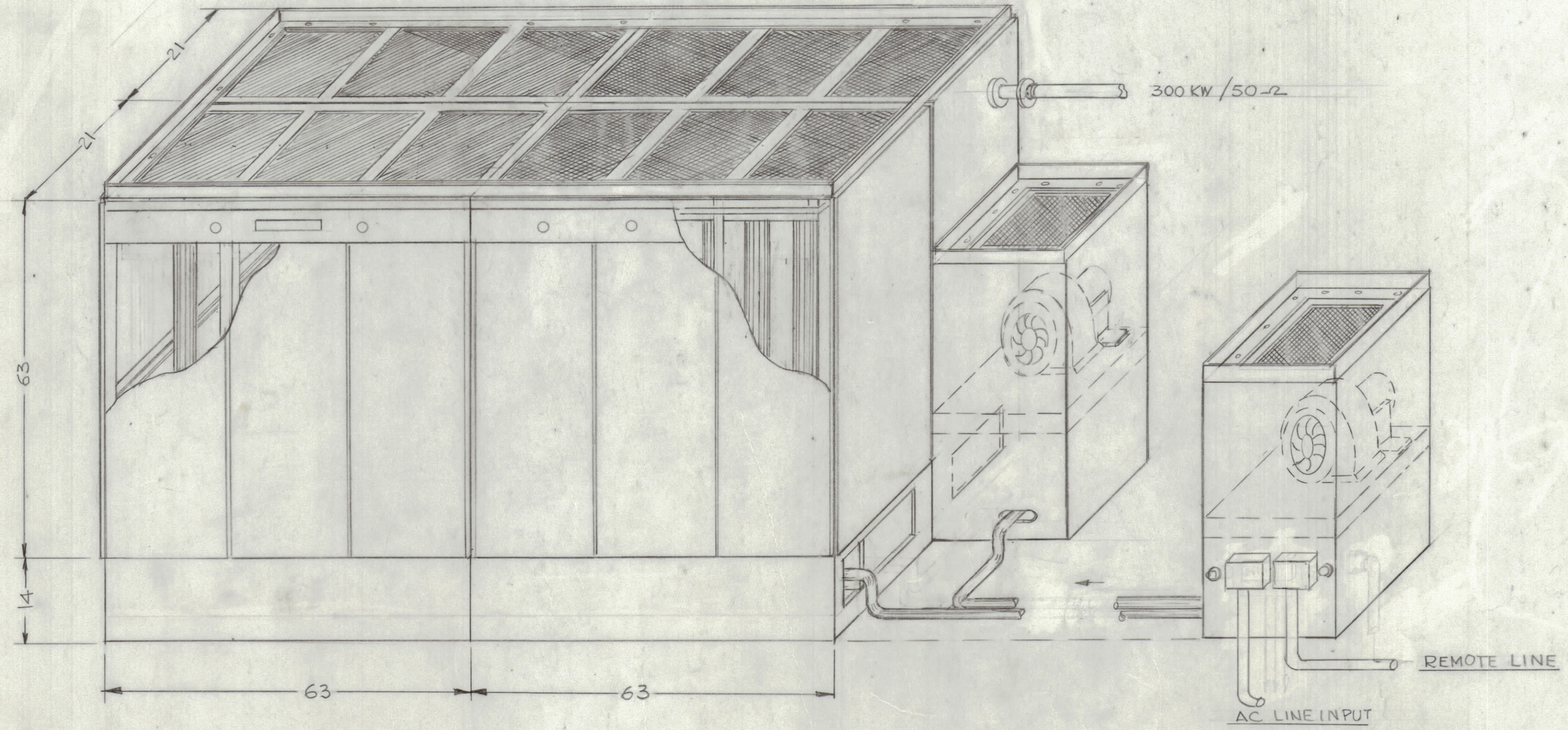
TER-300K

| QTY / UNIT  | MODEL USED ON | ASS'Y NO. |
|---|---------------|-----------|
| APPLICATION   |               |           |
| CODE  |               |           |
| <small>NOTICE TO PERSONS RECEIVING THIS DRAWING</small><br><small>THE TECHNICAL MATERIEL CORPORATION claims proprietary right in the material disclosed hereon. This drawing is issued in confidence for engineering information only and may not be reproduced or used to manufacture anything shown hereon without permission from THE TECHNICAL MATERIEL CORPORATION to the user. This drawing is loaned for mutual assistance and is subject to recall at any time.</small> |               |           |

| QTY. REQ.   | ITEM           | PART NO. | DESCRIPTION   | SYMBOL |
|---|----------------|----------|---|--------|
| LIST OF MATERIAL  |                |          |   |        |
|   | FINAL APPROVAL | DATE     | <b>THE TECHNICAL MATERIEL CORP.</b><br>MAMARONECK, NEW YORK<br><br>TER-300K/50n<br>INSTALLATION |        |
|   | MECH. DES.     | DATE     |   |        |
|   | ELECT. DES.    | DATE     |   |        |
|   | CHECKED        | DATE     |   |        |
|   | DRAWN          | DATE     |   |        |
| UNLESS OTHERWISE SPECIFIED DIMENSIONS ARE IN INCHES AND INCLUDE CHEMICALLY APPLIED OR PLATED FINISHES<br><br>TOLERANCES ON<br>DECIMALS .X ± .05<br>.XX ± .01<br>.XXX ± .005<br><br>FRACTIONS ± 1/64<br>ANGLES ± 0° -30' |                |          | SIZE CODE IDENT NO. DWG NO. ISSUE<br>D 82679 ID 474   |        |
| MATERIAL  |                |          | SCALE   |        |
| FINISH  |                |          | SHEET OF 2  |        |

8 7 6 5 4 3 2 1

| REVISIONS |       |      |      |     |                                 |         |          |
|-----------|-------|------|------|-----|---------------------------------|---------|----------|
| E.M.N.NO  | DRAFT | CHKD | ZONE | LTR | DESCRIPTION                     | DATE    | APPROVED |
|           | GDL   |      |      |     | ORIGINAL RELEASE FOR PRODUCTION | 3-26-91 |          |



| QTY. REQ.        | ITEM | PART NO.               | DESCRIPTION | SYMBOL   |
|------------------|------|------------------------|-------------|--|
| LIST OF MATERIAL |      |                        |             |  |
| FINAL APPROVAL   |      | DATE                   |             | <b>THE TECHNICAL MATERIEL CORP.</b><br>MAMARONECK, NEW YORK<br><br>TER 300KW/50 Hz<br>INSTALLATION |
| MECH. DES.       |      | DATE                   |             |  |
| ELECT. DES.      |      | DATE                   |             |  |
| CHECKED          |      | DATE                   |             |  |
| DRAWN            |      | DATE                   |             |  |
| MATERIAL         |      |                        |             |  |
| FINISH           |      |                        |             |  |
| SIZE             |      | CODE IDENT NO. DWG NO. |             | ISSUE  |
| D                |      | 82679 ID 474           |             | 1  |
| SCALE            |      |                        |             | SHEET 2 OF 2   |

| QTY / UNIT  | MODEL USED ON | ASS'Y NO. |
|---|---------------|-----------|
| APPLICATION   |               |           |
| CODE  |               |           |
| <small>NOTICE TO PERSONS RECEIVING THIS DRAWING</small><br><small>THE TECHNICAL MATERIEL CORPORATION claims proprietary right in the material disclosed hereon. This drawing is issued in confidence for engineering information only and may not be reproduced or used to manufacture anything shown hereon without permission from THE TECHNICAL MATERIEL CORPORATION to the user. This drawing is loaned for mutual assistance and is subject to recall at any time.</small> |               |           |

UNLESS OTHERWISE SPECIFIED DIMENSIONS ARE IN INCHES AND INCLUDE CHEMICALLY APPLIED OR PLATED FINISHES

TOLERANCES ON

|             |                  |
|-------------|------------------|
| DECIMALS    | FRACTIONS        |
| .X ± .05    | ± 1/64           |
| .XX ± .01   | ANGLES ± 0° -30' |
| .XXX ± .005 |                  |