

THIS DRAWING IS THE PROPERTY OF THE TECHNICAL MATERIEL CORPORATION

The TECHNICAL MATERIEL CORPORATION claims copyright right in the material disclosed hereon. This drawing is issued in confidence for engineering information only and may not be reproduced or used to manufacture anything shown hereon without permission from THE TECHNICAL MATERIEL CORPORATION to the user. This drawing is loaned for mutual assistance and is subject to recall at any time.

Property of:  
THE TECHNICAL MATERIEL CORPORATION  
MAMARONECK, NEW YORK

ISSUE	ITEM	CHANGED FROM	DATE	CH. NO.	DRAFTS	CHECKER	ENG. APP.
TOLERANCES			SCALE:				
DEC. DIM. ±			MAXIMUM ALLOWABLE TOLERANCES HAVE BEEN DETERMINED AND ANY DEVIATIONS WILL BE CAUSE FOR REJECTION.				
FRAC. DIM. ±			REMOVE ALL BURRS AND SHARP EDGES				
ANGULAR DIM. ±							

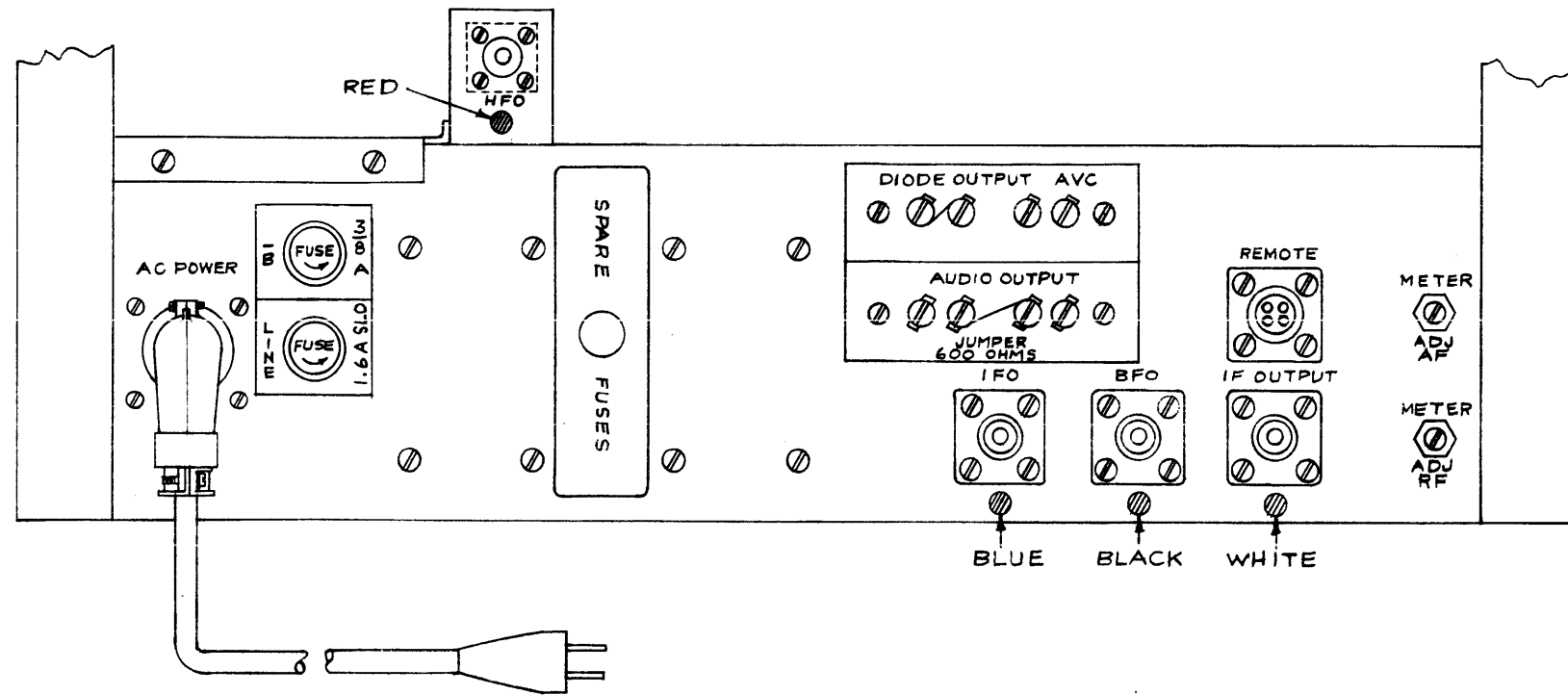
REQ. PER UNIT	MODEL	PROJECT NO.	ASS'Y. NO.	DATE

USED ON

REQ. ITEM	PART NO.	DESCRIPTION	SYMBOL
		THE TECHNICAL MATERIEL CORP. MAMARONECK, NEW YORK	
STOCK SIZE		TYPICAL ANTENNA INSTALLATION	
MATERIAL			
TYPE & TEMPER	HEAT TREAT. SPEC.	DRAWN	CHECKED
		4H	M.T.S.
FINISH & SPEC. NO.		ELEC. DES. APP.	MECH. DES. APP.
			IN-108



IN-114



THIS DRAWING IS LOANED FOR MUTUAL ASSISTANCE AND IS SUBJECT TO RECALL AT ANY TIME.

THE TECHNICAL MATERIEL CORPORATION claims no responsibility for the reproduction hereof. This drawing is issued in confidence for engineering information only and may not be reproduced or used by anyone other than the person to whom it is loaned from THE TECHNICAL MATERIEL CORPORATION. This drawing is loaned for mutual assistance and is subject to recall at any time.

Property of:  
 THE TECHNICAL MATERIEL CORPORATION  
 MAMARONECK, NEW YORK

ISSUE	ITEM	CHANGED FROM	DATE	CH. NO.	DRAFTS	CHECKER	ENG. APP.
TOLERANCES			SCALE:				
DEC. DIM. ±			MAXIMUM ALLOWABLE TOLERANCES HAVE BEEN DETERMINED AND ANY DEVIATIONS WILL BE CAUSE FOR REJECTION.				
FRAC. DIM. ±			REMOVE ALL BURRS AND SHARP EDGES				
ANGULAR DIM. ±							

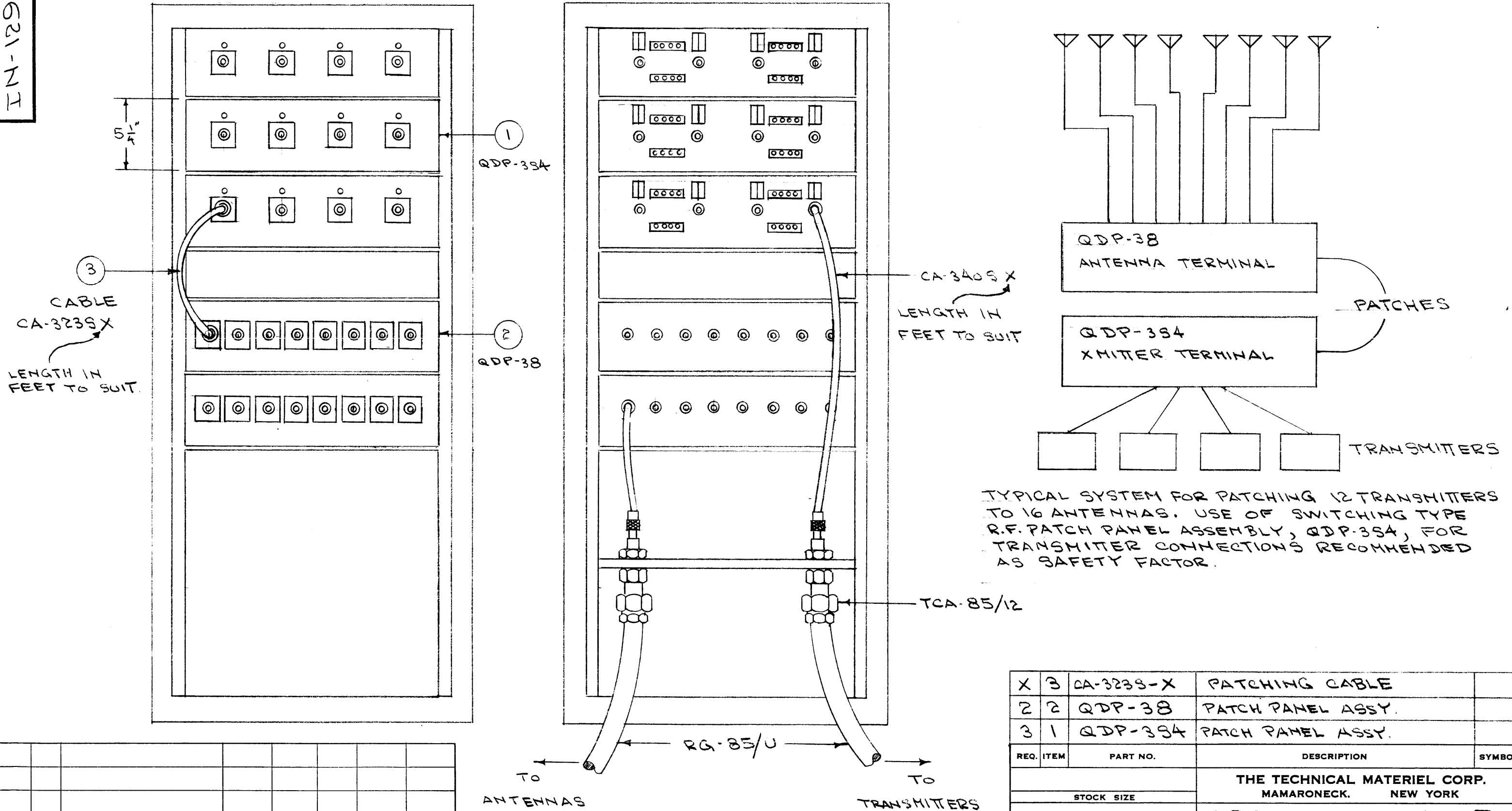
REQ. PER UNIT	DMK-5	PROJECT NO.	ASS'Y. NO.	DATE
	MODEL			8-16-56
USED ON				

REQ. ITEM	PART NO.	DESCRIPTION	SYMBOL
//		THE TECHNICAL MATERIEL CORP. MAMARONECK, NEW YORK	
STOCK SIZE		REAR PANEL VIEW, DMK-5	
//			
MATERIAL			
//	//	48-16-56	SA
TYPE & TEMPER		HEAT TREAT. SPEC.	DRAWN
//			CHECKED
FINISH & SPEC. NO.		ELEC. DES. APP.	MECH. DES. APP.
			FINAL APPROVAL
			IN-114

G21-NI

FRONT VIEW

REAR VIEW

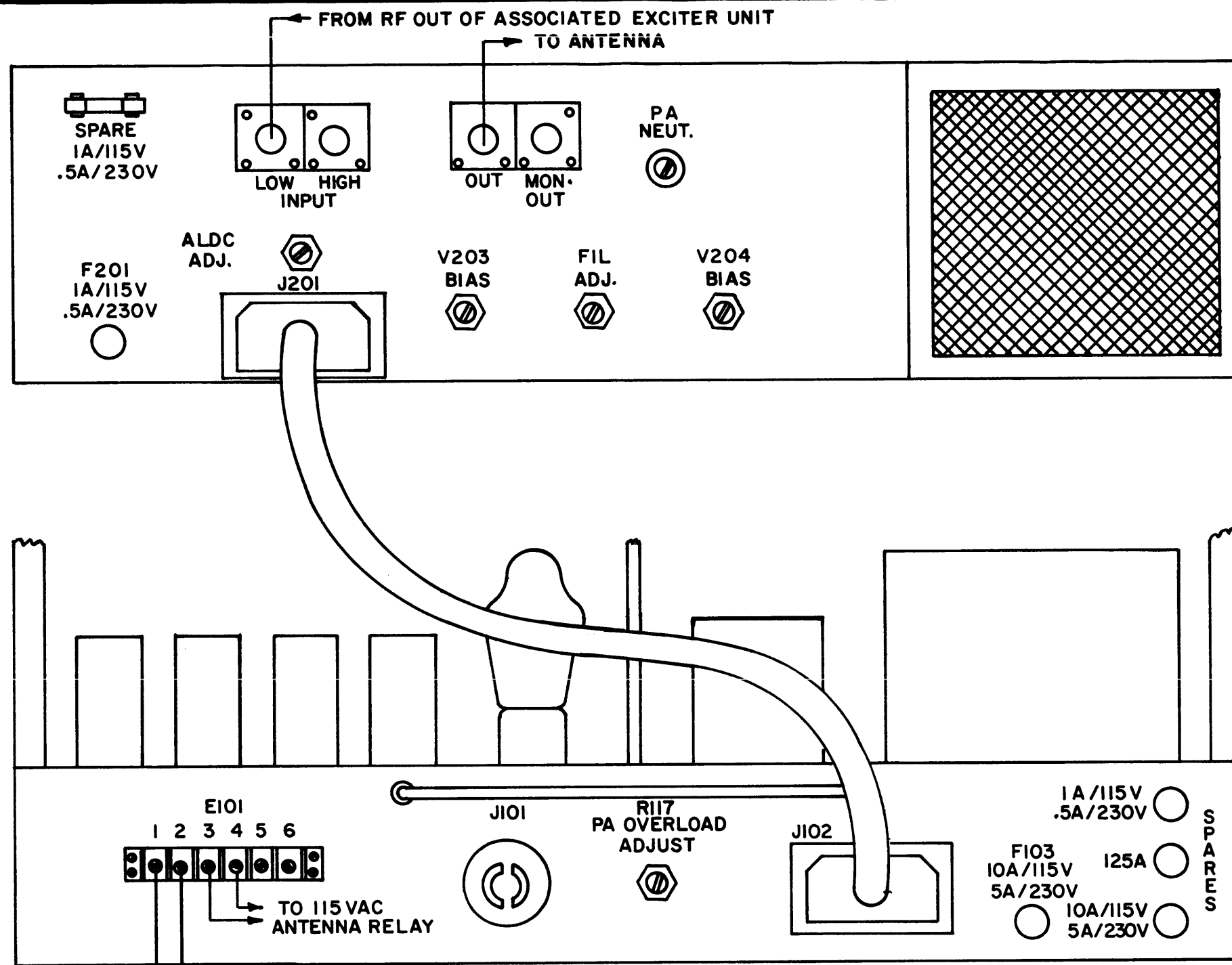


REQ.	ITEM	PART NO.	DESCRIPTION	SYMBOL
X	3	CA-3235-X	PATCHING CABLE	
	2	QDP-38	PATCH PANEL ASSY.	
	3	QDP-354	PATCH PANEL ASSY.	
			THE TECHNICAL MATERIEL CORP. MAMARONECK, NEW YORK	
			TYPICAL PATCHING LAYOUT	
			MODELS QDP	
			EBD	J.A.
			DRAWN	CHECKED
			FINAL APPROVAL	
			IN-129	

ISSUE	ITEM	CHANGED FROM	DATE	CH. NO.	DRAFTS	CHECKER	ENG. APP.
TOLERANCES		SCALE:					
DEC. DIM. ±		MAXIMUM ALLOWABLE TOLERANCES HAVE BEEN DETERMINED AND ANY DEVIATIONS WILL BE CAUSE FOR REJECTION.					
FRAC. DIM. ±		REMOVE ALL BURRS AND SHARP EDGES					
ANGULAR DIM. ±							

REQ. PER UNIT	MODEL	PROJECT NO.	ASS'Y. NO.	DATE	USED ON

IN-133



ALL INFORMATION CONTAINED HEREIN IS UNCLASSIFIED  
 DATE 08-22-2011 BY 60322 UCBAW/SJS/STP  
 THE TECHNICAL MATERIEL CORPORATION claims  
 proprietary right in the material disclosed hereon.  
 This drawing is issued in confidence for engineering  
 information only and may not be reproduced or used  
 to manufacture any thing shown hereon without per-  
 mission from THE TECHNICAL MATERIEL CORPORA-  
 TION to the user. This drawing is loaned for mutual  
 assistance and is subject to recall at any time.

Property of:  
 THE TECHNICAL MATERIEL CORPORATION  
 MAMARONECK, NEW YORK

FIGURE 2-1 INSTALLATION DIAGRAM, REAR PANEL CONNECTIONS AND ADJUSTMENTS OF PAL-350

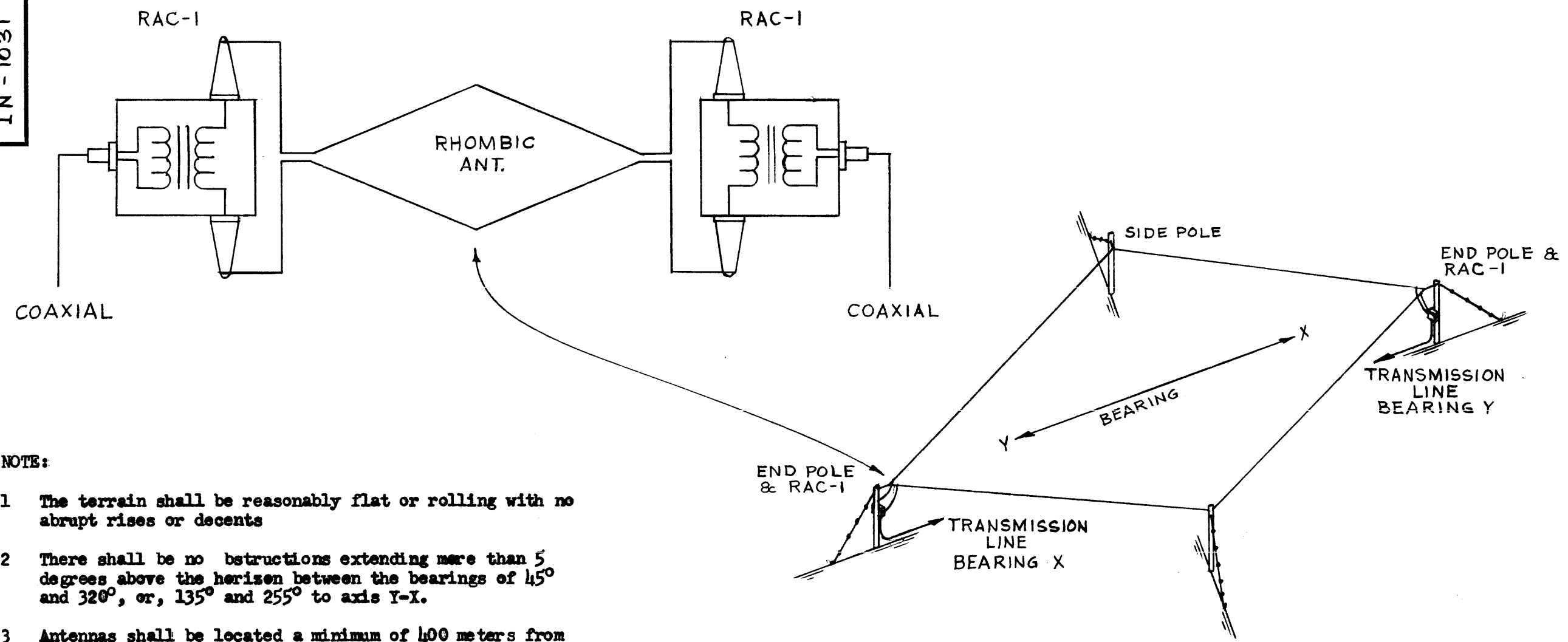
TO ASSOCIATED SBE'S E101 TERMINAL PINS 4 & 5 FOR REMOTE CONTROL OF TRANSMITTER PLATES.

SYM	DESCRIPTION	DATE	CH. NO.	DRAFTS	CHECKER	ENG. APP.
	UNLESS OTHERWISE SPECIFIED: DIMENSIONS ARE IN INCHES TOLERANCES ON FRACTIONS ± 1/64 DECIMALS ± .005 ANGLES ± 1/2°					
	SCALE: MAXIMUM ALLOWABLE TOLERANCES HAVE BEEN DETERMINED AND ANY DEVIATIONS WILL BE CAUSE FOR REJECTION. REMOVE ALL BURRS AND SHARP EDGES					

REQ. PER UNIT	MODEL	SECTION	ASS'Y. NO.	DATE
	PAL-350			2-24-61
	USED ON			

REQ.	ITEM	PART NO.	DESCRIPTION	SYMBOL
			THE TECHNICAL MATERIEL CORP. MAMARONECK, NEW YORK	
STOCK SIZE			INSTALLATION DIAGRAM	
MATERIAL				
			W.A.F. J.W. P.S.	
			DRAWN CHECKER	FINAL APPROVAL
				IN-133
			ELEC. DES. APP. MECH. DES. APP.	

IN - 1031



NOTE:

- 1 The terrain shall be reasonably flat or rolling with no abrupt rises or decents
- 2 There shall be no bstructions extending more than 5 degrees above the horizen between the bearings of 45° and 320°, or, 135° and 255° to axis Y-X.
- 3 Antennas shall be located a minimum of 400 meters from main highways or vehicl parking areas, and a minimum of 1500 meters from high tension power lines, transformer sub stations, and industrial areas.
4. Antennas shall be installed 300 meters apart, in line or parallel, on a tru bearing of the received signal for diversity operation.

THIS DRAWING IS LOANED TO YOU BY THE TECHNICAL MATERIEL CORPORATION

THE TECHNICAL MATERIEL CORPORATION claims proprietary right in the material disclosed herein. This drawing is issued in confidence for engineering information only and may not be reproduced or used to manufacture anything shown hereon without permission from THE TECHNICAL MATERIEL CORPORATION to the user. This drawing is loaned for mutual assistance and is subject to recall at any time.

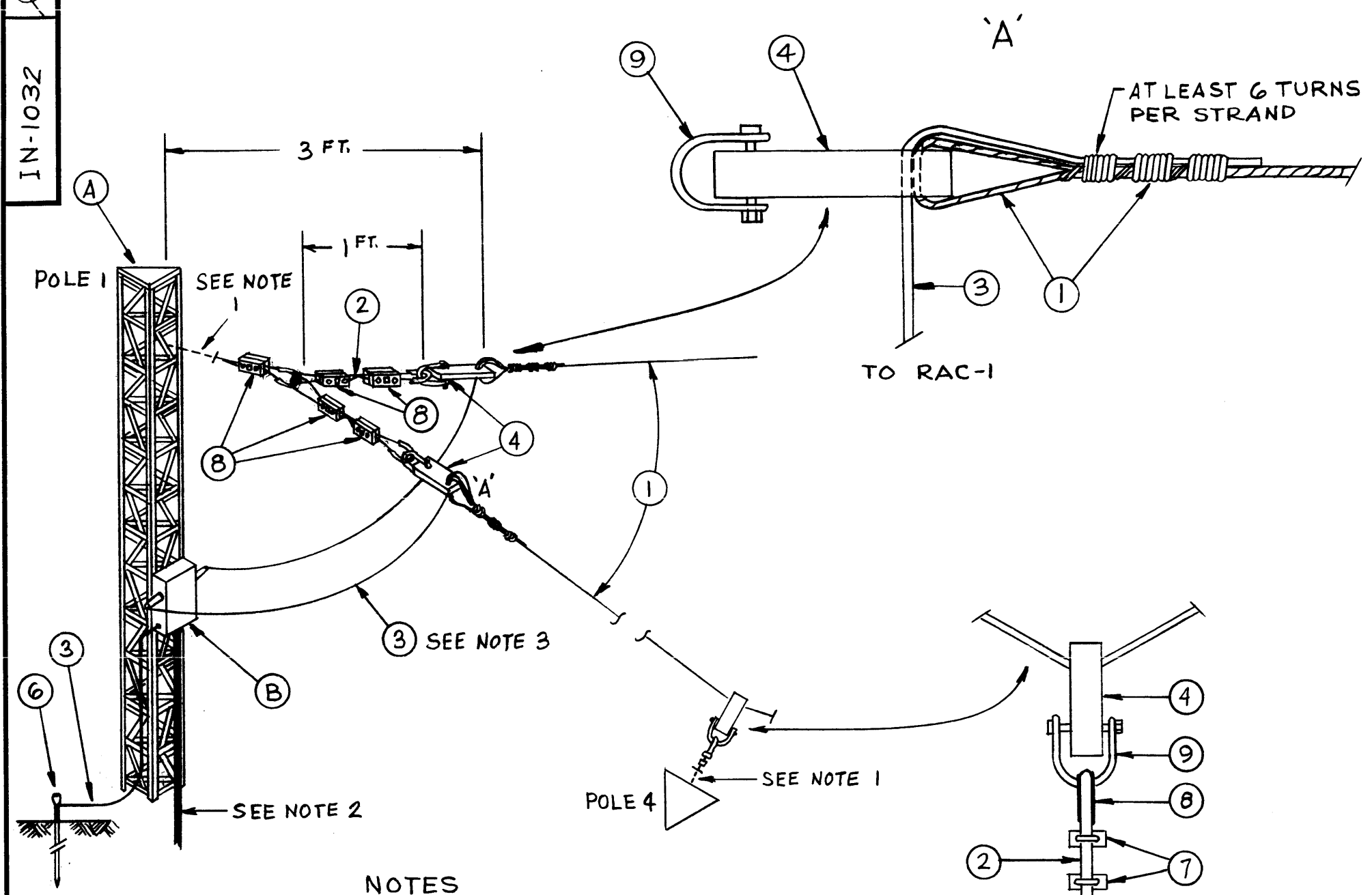
Property of:  
THE TECHNICAL MATERIEL CORPORATION  
MAMARONECK, NEW YORK

ORIGINAL RELEASE							8/14/69	⊗
ISSUE	ITEM	CHANGED FROM	DATE	CH. NO.	DRAFTS	CHECKER	ENG. APP.	
TOLERANCES			SCALE:					
DEC. DIM. ±			MAXIMUM ALLOWABLE TOLERANCES HAVE BEEN DETERMINED AND ANY DEVIATIONS WILL BE CAUSE FOR REJECTION. REMOVE ALL BURRS AND SHARP EDGES					
FRAC. DIM. ±								
ANGULAR DIM. ±								

REQ. PER UNIT	MODEL	PROJECT NO.	ASS'Y. NO.	DATE
USED ON				

REQ. ITEM	PART NO.	DESCRIPTION	SYMBOL
THE TECHNICAL MATERIEL CORP. MAMARONECK, NEW YORK			
STOCK SIZE			
BI-DIRECTIONAL RHOMBIC ANTENNA - RECEIVING			
MATERIAL			
6-24-58 M.J.T.		9/2/69	
TYPE & TEMPER	HEAT TREAT. SPEC.	DRAWN	CHECKED
FINISH & SPEC. NO.		ELEC. DES. APP.	MECH. DES. APP.
			IN - 1031 ⊗

IN-1032



NOTICE TO PERSONS RECEIVING THIS DRAWING

THE TECHNICAL MATERIEL CORPORATION claims proprietary right in the material disclosed hereon. This drawing is issued in confidence for engineering information only and may not be reproduced or used to manufacture anything shown hereon without permission from THE TECHNICAL MATERIEL CORPORATION to the user. This drawing is loaned for mutual assistance and is subject to recall at any time.

Property of:  
 THE TECHNICAL MATERIEL CORPORATION  
 MAMARONECK, NEW YORK

NOTES

- 1- CONNECTION HARNESS TO TOWER TO AGREE WITH TOWER REQUIREMENTS.
- 2- COAXIAL CABLE TO MATCH 70 OHM IMPEDANCE.
- 3- DISTANCE BETWEEN ANTENNA AND RAC-1 NOT TO EXCEED 6 FEET.
- 4- BOTH END POLES IDENTICAL.
- 5- BOTH SIDE POLES IDENTICAL.

REQ. ITEM	PART NO.	DESCRIPTION	SYMBOL
6	9	SHACKLE, 3/8", TO FIT ITEM 4	
10	8	CLAMP, GUY, 3 BOLT, GALV. IRON	
4	7	CLIP WIRE ROPE, 5/16, GALV. STEEL	
2	6	GROUND ROD, 1/2" X 6' GALV. IRON	
8	5	THIMBLE, STEEL, GALV., FOR 5/16" ROPE	
6	4	INSULATOR STRAIN, 10"	
200'	3	WIRE #6, COPPER, SOFT DRAWN	
100'	2	WIRE, 5/16, MESSENGER, GALV. STEEL-60001b	
2000'	1	WIRE (3 STRAND #12) COPPERWELD	
2	B	RAC-1	RHOMBIC ANTENNA COUPLER
	A		METAL TOWER- CUSTOMER FURNISHED
		THE TECHNICAL MATERIEL CORP. MAMARONECK, NEW YORK	
		RAC-1 INSTALLATION DETAIL & MATERIAL LIST FOR 3000 MILE RHOMBIC- RECEIVING	
		MATERIAL	
		6-25-58 M.J.T.	
		8/12/67	
		IN-1032	

ISSUE	ITEM	CHANGED FROM	DATE	CH. NO.	DRAFTS	CHECKER	ENG. APP.
		ORIGINAL RELEASE	8/14/67				
		TOLERANCES		SCALE:			
		DEC. DIM. ±		MAXIMUM ALLOWABLE TOLERANCES HAVE BEEN DETERMINED AND ANY DEVIATIONS WILL BE CAUSE FOR REJECTION.			
		FRAC. DIM. ±		REMOVE ALL BURRS AND SHARP EDGES			
		ANGULAR DIM. ±					

REQ. PER UNIT	MODEL	PROJECT NO.	ASS'Y. NO.	DATE

USED ON



IN-1035

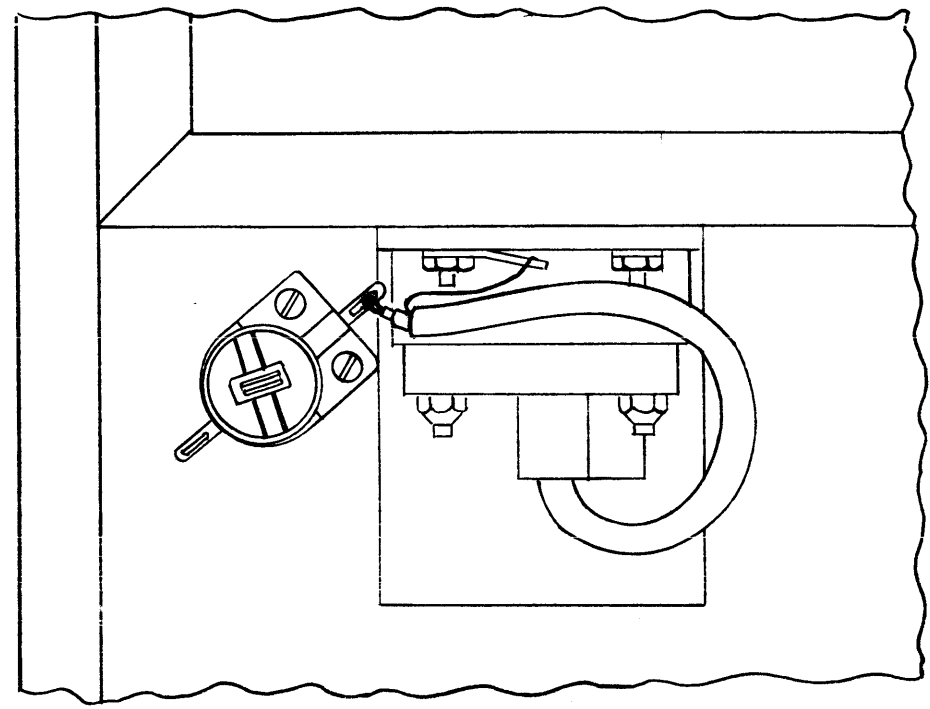


FIGURE 1

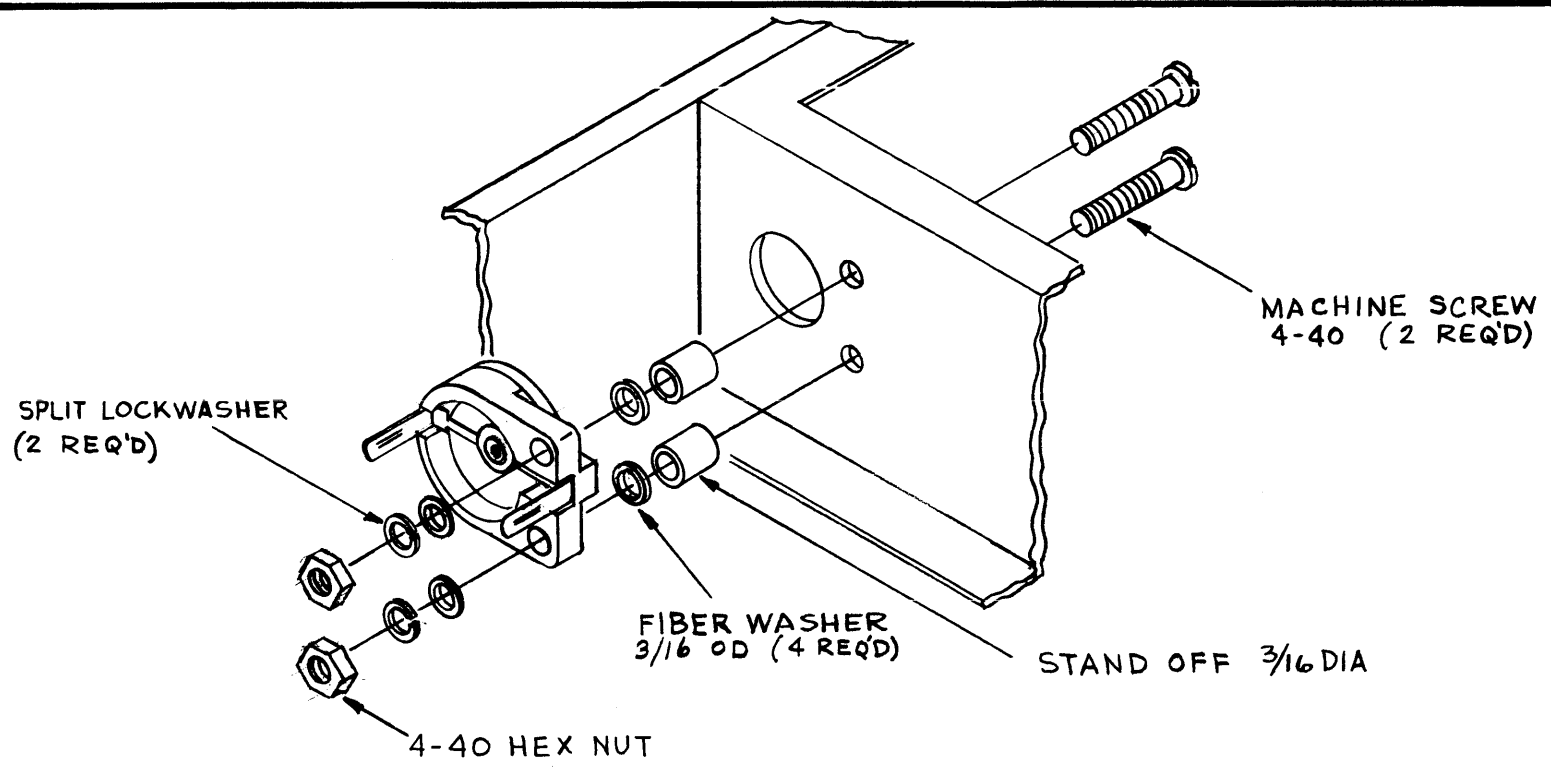
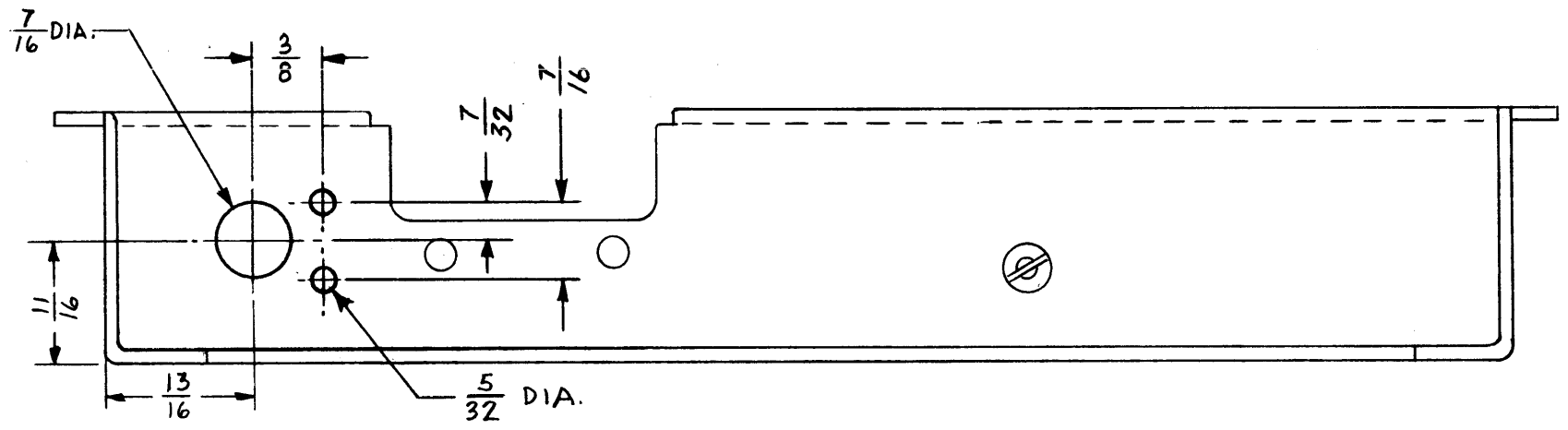


FIGURE 2



DRILLING PLAN

NOT TO BE REPRODUCED FROM THIS DRAWING

THE TECHNICAL MATERIEL CORPORATION claims proprietary right in the material disclosed herein. This drawing is issued in confidence for engineering information only and may not be reproduced or used to manufacture anything shown herein without permission from THE TECHNICAL MATERIEL CORPORATION to the user. This drawing is loaned for mutual assistance and is subject to recall at any time.

Property of:  
THE TECHNICAL MATERIEL CORPORATION  
MAMARONECK, NEW YORK

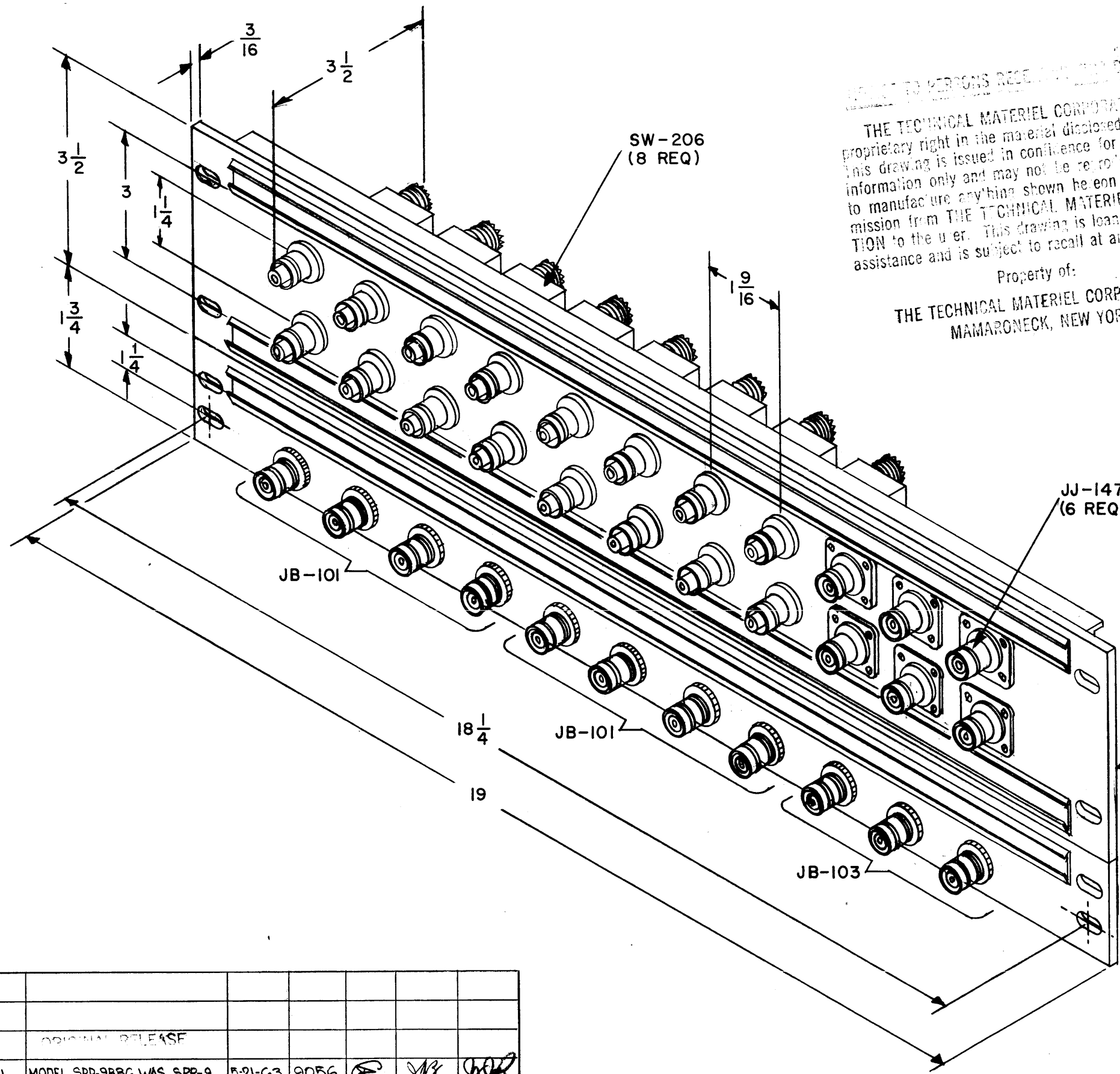
1. Drill holes of sizes shown and in positions shown in DRILLING PLAN.
2. Remove C100 from present location (See Figure 1)
3. Retain all hardware.
4. Replace C100 in new position as shown in Figure 2.

ISSUE	ITEM	CHANGED FROM	DATE	CH. NO.	DRAFTS	CHECKER	ENG. APP.
TOLERANCES			SCALE:				
DEC. DIM. ±			MAXIMUM ALLOWABLE TOLERANCES HAVE BEEN DETERMINED AND ANY DEVIATIONS WILL BE CAUSE FOR REJECTION. REMOVE ALL BURRS AND SHARP EDGES				
FRAC. DIM. ±							
ANGULAR DIM. ±							

REQ. PER UNIT	MODEL	PROJECT NO.	ASS'Y. NO.	DATE
USED ON				

REQ. ITEM	PART NO.	DESCRIPTION	SYMBOL
		THE TECHNICAL MATERIEL CORP. MAMARONECK, NEW YORK	
STOCK SIZE		FIELD CONVERSION - REPLACEMENT	
MATERIAL		OF C100	MODEL FFR
		9-19-58 MIT	✱
TYPE & TEMPER	HEAT TREAT. SPEC.	DRAWN	CHECKED
		FINAL APPROVAL	
FINISH & SPEC. NO.		ELEC. DES. APP.	MECH. DES. APP.
		IN-1035	

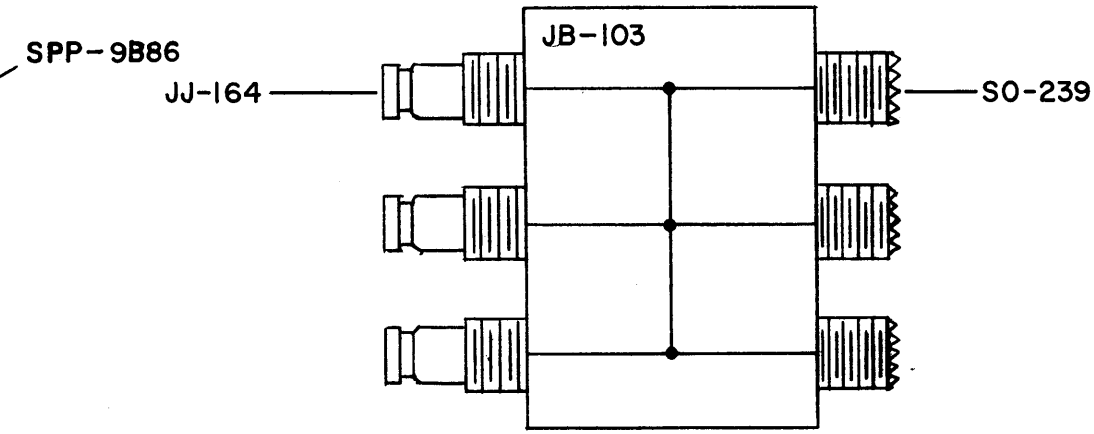
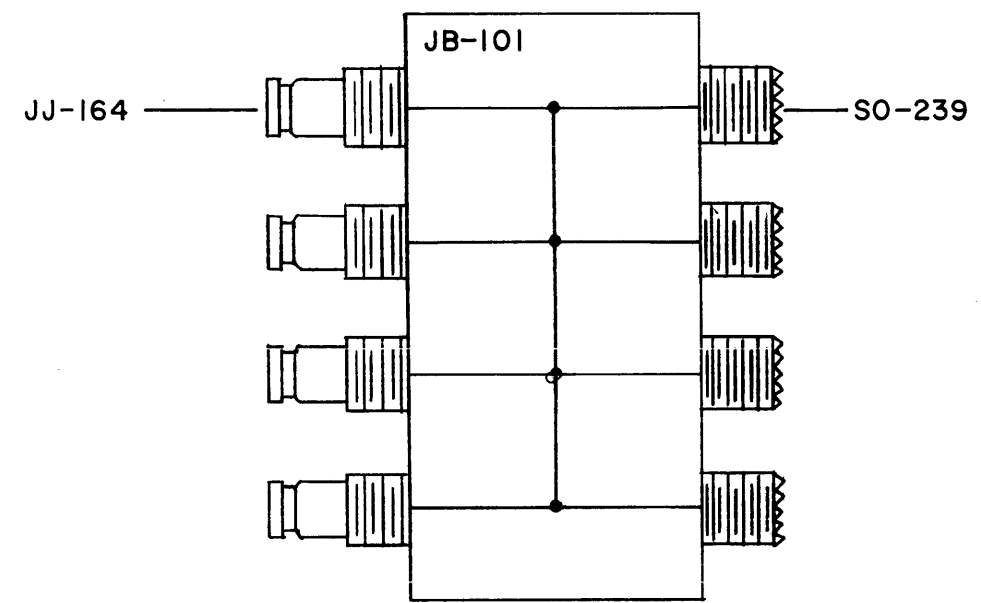
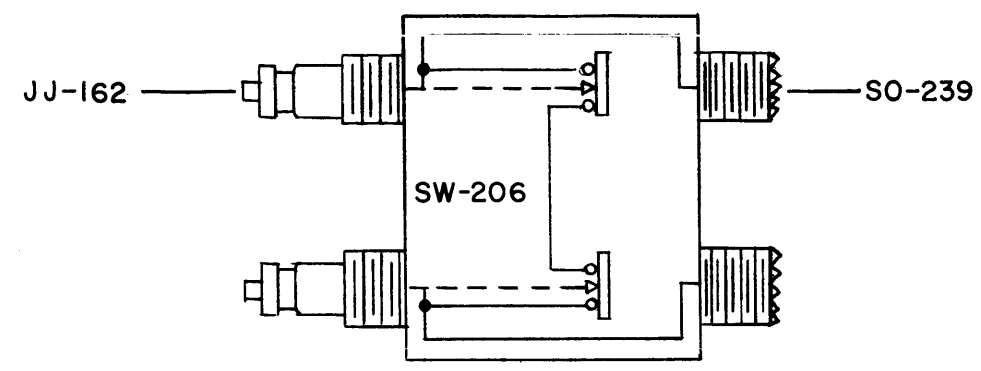
IN-1037 A



PROPERTY OF PERSONS RECEIVING THIS DRAWING

THE TECHNICAL MATERIEL CORPORATION claims proprietary right in the material disclosed herein. This drawing is issued in confidence for engineering information only and may not be reproduced or used to manufacture anything shown hereon without permission from THE TECHNICAL MATERIEL CORPORATION to the user. This drawing is loaned for mutual assistance and is subject to recall at any time.

Property of:  
THE TECHNICAL MATERIEL CORPORATION  
MAMARONECK, NEW YORK

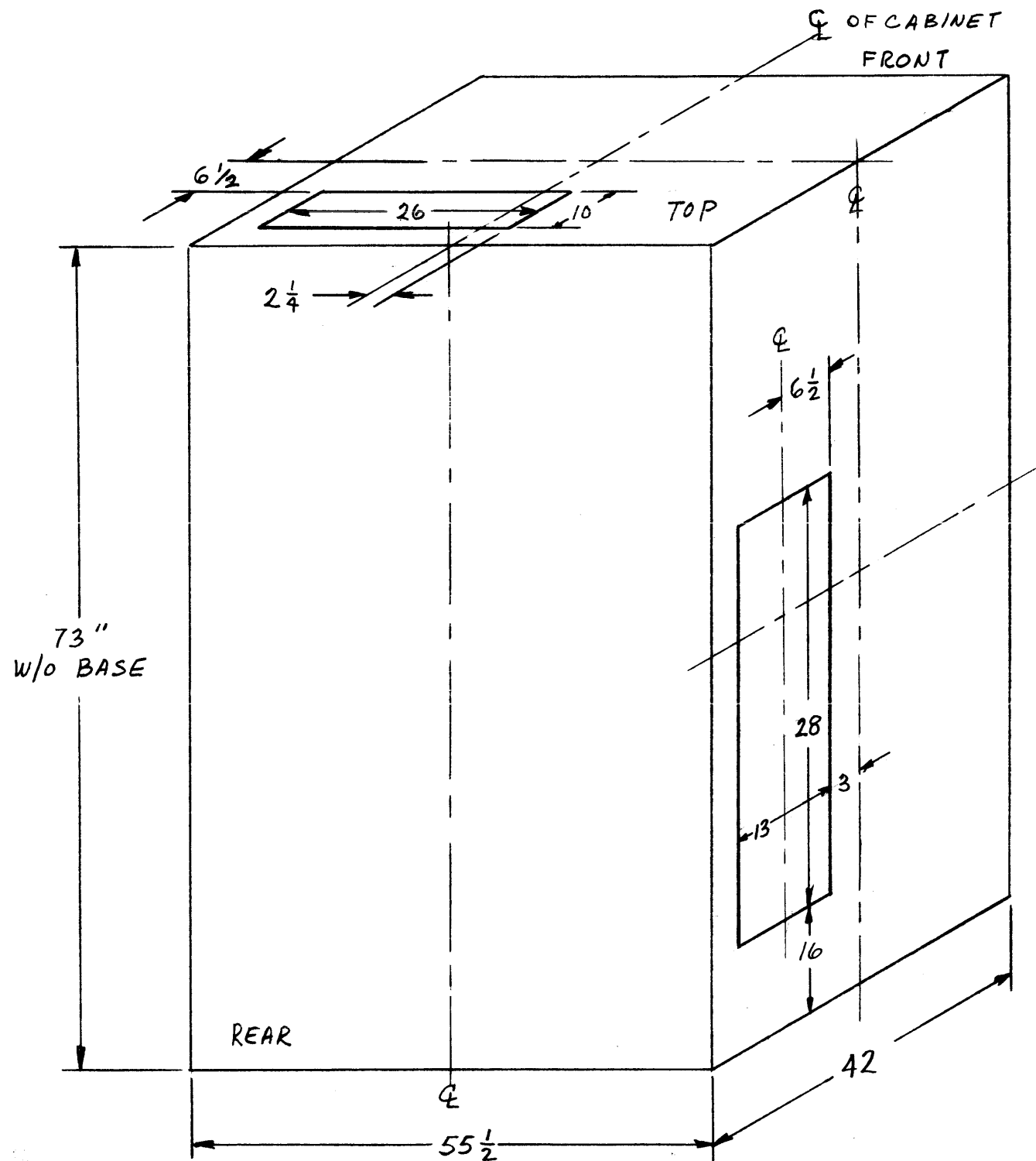


		ORIGINAL RELEASE						
A	1	MODEL SPP-9B86 WAS SPP-9	5-21-63	9056	<i>[Signature]</i>	<i>[Signature]</i>	<i>[Signature]</i>	
ISSUE ITEM	CHANGED FROM	DATE	CH. NO.	DRAFTS	CHECKER	ENG. APP.		
TOLERANCES		SCALE:						
DEC. DIM. ±		MAXIMUM ALLOWABLE TOLERANCES HAVE BEEN DETERMINED AND ANY DEVIATIONS WILL BE CAUSE FOR REJECTION.						
FRAC. DIM. ±		REMOVE ALL BURRS AND SHARP EDGES						
ANGULAR DIM. ±		REQ. PER UNIT	MODEL	PROJECT NO.	ASS'Y. NO.	DATE	USED ON	

REQ. ITEM	PART NO.	DESCRIPTION	SYMBOL
		THE TECHNICAL MATERIEL CORP. MAMARONECK, NEW YORK	
STOCK SIZE			
		PATCHING SYSTEM LAYOUT	
MATERIAL		SPP-9B86, BJP-5	
		MJT 10-9-58	<i>[Signature]</i>
TYPE & TEMPER	HEAT TREAT. SPEC.	DRAWN	CHECKED
FINISH & SPEC. NO.	ELEC. DES. APP.	MECH. DES. APP.	

IN-1037 A

IN-1042



NOT TO BE REPRODUCED WITHOUT PERMISSION

THE TECHNICAL MATERIEL CORPORATION claims proprietary right in the material disclosed hereon. This drawing is issued in confidence for engineering information only and may not be reproduced or used to manufacture anything shown hereon without permission from THE TECHNICAL MATERIEL CORPORATION to the user. This drawing is loaned for mutual assistance and is subject to recall at any time.

Property of:  
 THE TECHNICAL MATERIEL CORPORATION  
 MAMARONECK, NEW YORK

ISSUE	ITEM	CHANGED FROM	DATE	CH. NO.	DRAFTS	CHECKER	ENG. APP.
φ		ORIGINAL RELEASE	8/14/69				

TOLERANCES		SCALE:
DEC. DIM. ±		MAXIMUM ALLOWABLE TOLERANCES HAVE BEEN DETERMINED AND ANY DEVIATIONS WILL BE CAUSE FOR REJECTION. REMOVE ALL BURRS AND SHARP EDGES
FRAC. DIM. ±		
ANGULAR DIM. ±		

REQ. PER UNIT	MODEL	PROJECT NO.	ASS'Y. NO.	DATE

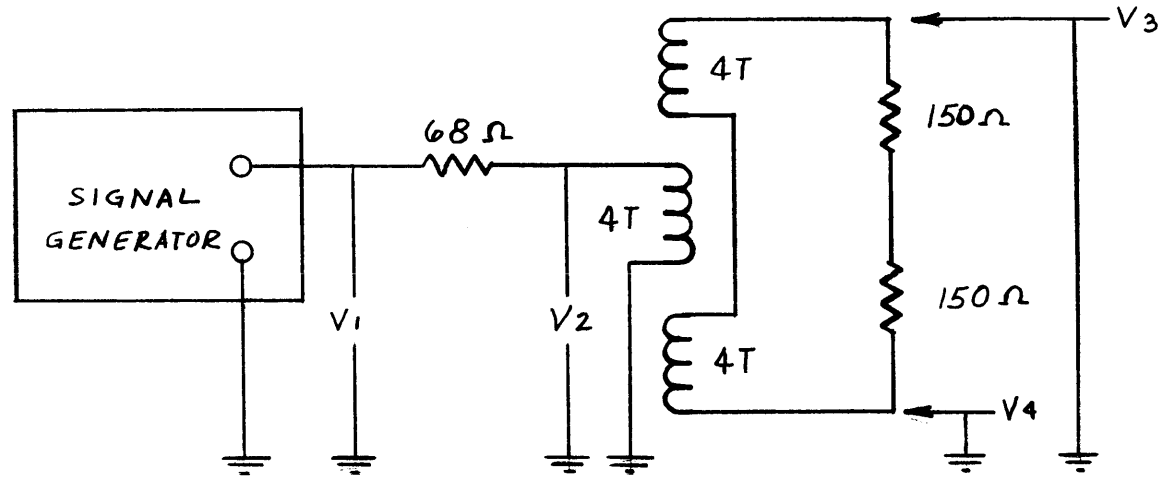
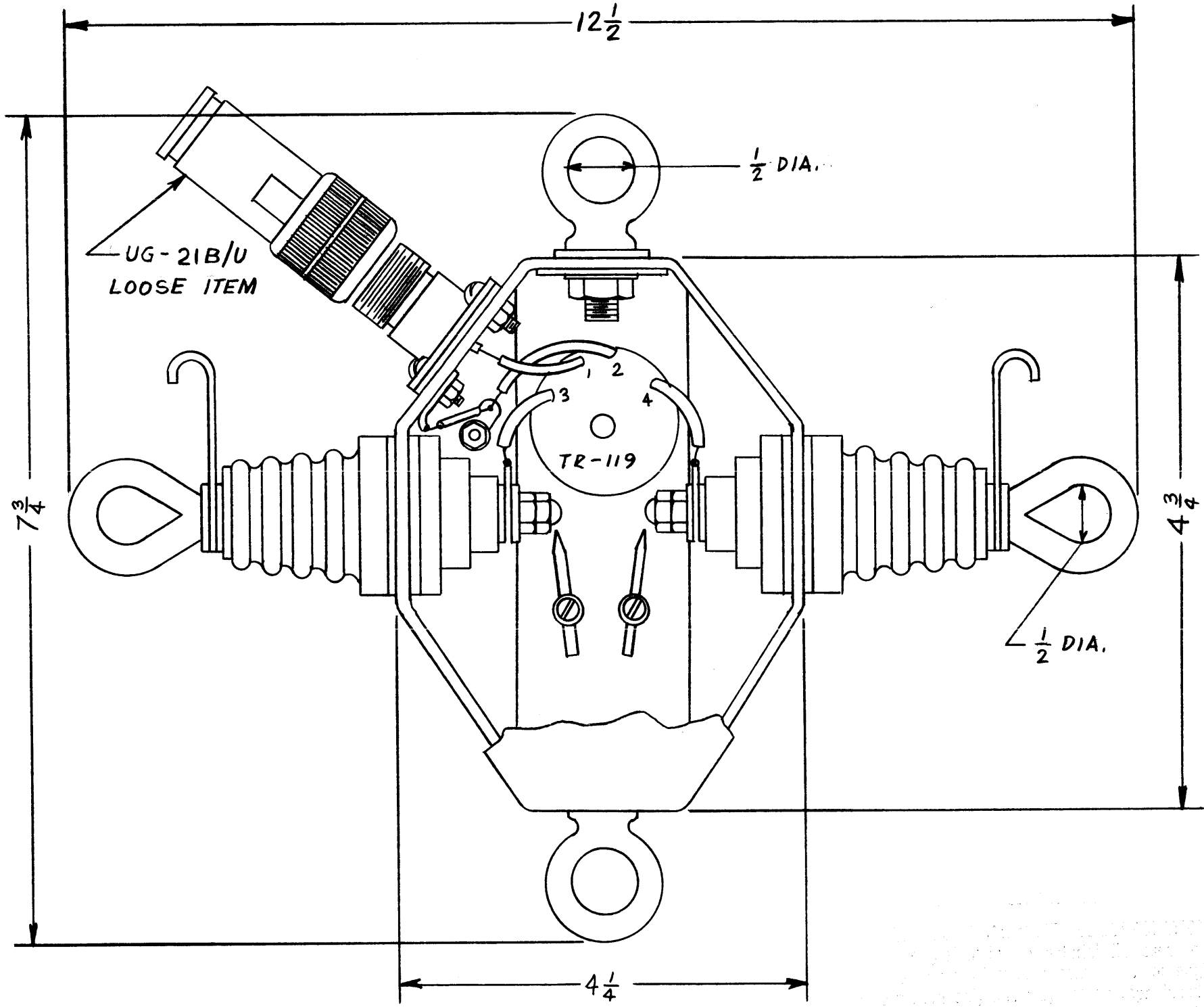
USED ON

REQ. ITEM	PART NO.	DESCRIPTION	SYMBOL
		THE TECHNICAL MATERIEL CORP. MAMARONECK, NEW YORK	
		FLUE MOUNTING DETAIL	
		MODEL GPT-10,000	
		MJT 11-19-58	
		DRAWN	CHECKED
			FINAL APPROVAL
			IN-1042
		FINISH & SPEC. NO.	ELEC. DES. APP. MECH. DES. APP.



1/N-1053

ELECTRICAL TEST DATA, TR-119



f. mc	R.F. VOLTS *			
	V <sub>1</sub>	V <sub>2</sub>	V <sub>3</sub>	V <sub>4</sub>
2	1.0	.40	.39	.39
8	1.0	.47	.44	.46
32	1.0	.56	.44	.46

\* VOLTAGES MEASURED WITH H.P. VTVM

MAXIMUM OVERALL DIMENSION INCLUDING TERMINALS  
12 1/2" WIDE X 7 3/4" LONG X 2 1/4" DEEP

THIS DRAWING IS THE PROPERTY OF THE TECHNICAL MATERIEL CORPORATION. IT IS TO BE KEPT IN CONFIDENCE AND NOT TO BE REPRODUCED OR TRANSMITTED IN ANY FORM OR BY ANY MEANS, ELECTRONIC OR MECHANICAL, INCLUDING PHOTOCOPYING, RECORDING, OR BY ANY INFORMATION STORAGE AND RETRIEVAL SYSTEM, WITHOUT THE WRITTEN PERMISSION OF THE TECHNICAL MATERIEL CORPORATION.

ISSUE	ITEM	CHANGED FROM	DATE	CH. NO.	DRAFTS	CHECKER	ENG. APP.
Ø		ORIGINAL RELEASE	8/4/69				

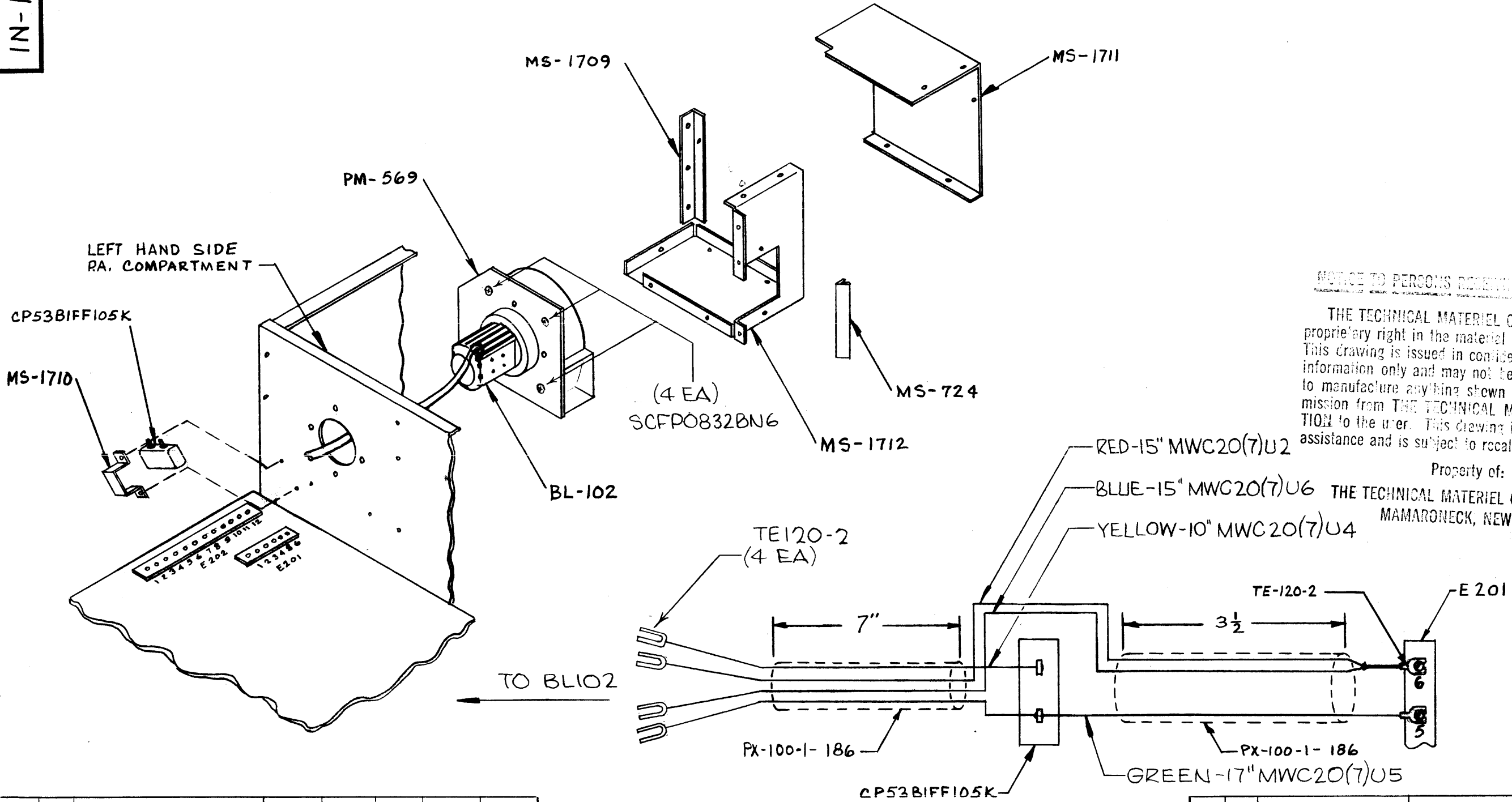
TOLERANCES		SCALE:
DEC. DIM. ±		MAXIMUM ALLOWABLE TOLERANCES HAVE BEEN DETERMINED AND ANY DEVIATIONS WILL BE CAUSE FOR REJECTION. REMOVE ALL BURRS AND SHARP EDGES
FRAC. DIM. ±		
ANGULAR DIM. ±		

REQ. PER UNIT	MODEL	PROJECT NO.	ASS'Y. NO.	DATE

USED ON

REQ. ITEM	PART NO.	DESCRIPTION	SYMBOL
		THE TECHNICAL MATERIEL CORP. MAMARONECK, NEW YORK	
		DIMENSIONAL OUTLINE	
		DAC-2	
		MJT 2-4-59	
		DRAWN	CHECKED
		FINAL APPROVAL	
		IN-1053 Ø	
		ELEC. DES. APP.	MECH. DES. APP.





**NOTICE TO PERSONS RECEIVING THIS DRAWING**

THE TECHNICAL MATERIEL CORPORATION claims proprietary right in the material disclosed hereon. This drawing is issued in confidence for engineering information only and may not be reproduced or used to manufacture anything shown hereon without permission from THE TECHNICAL MATERIEL CORPORATION to the user. This drawing is loaned for mutual assistance and is subject to recall at any time.

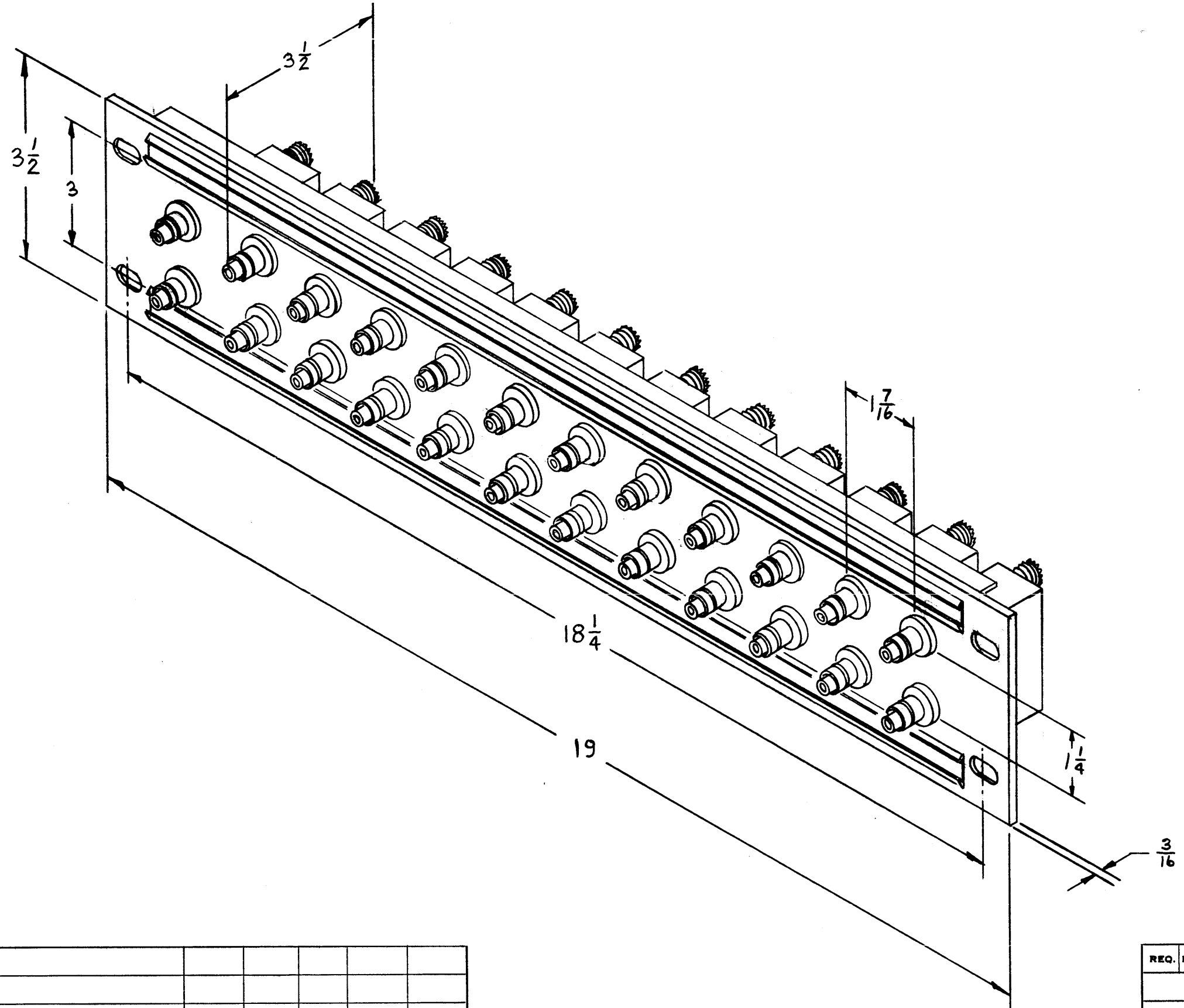
Property of:  
**THE TECHNICAL MATERIEL CORPORATION**  
 MAMARONECK, NEW YORK

ISSUE	ITEM	CHANGED FROM	DATE	CH. NO.	DRAFTS	CHECKER	ENG. APP.
A		WIRE CLARIFIED TE120-2 ADDED, 4 SCFP0832BN6 ADDED	9.23.64	16951	UW	QCB	[Signature]
TOLERANCES		SCALE:					
DEC. DIM. ±		MAXIMUM ALLOWABLE TOLERANCES HAVE BEEN DETERMINED AND ANY DEVIATIONS WILL BE CAUSE FOR REJECTION. REMOVE ALL BURRS AND SHARP EDGES					
FRAC. DIM. ±							
ANGULAR DIM. ±							

REQ. PER UNIT	MODEL	PROJECT NO.	ASS'Y. NO.	DATE
USED ON				

REQ. ITEM	PART NO.	DESCRIPTION	SYMBOL
		<b>THE TECHNICAL MATERIEL CORP.</b> MAMARONECK, NEW YORK	
		<b>MODIFICATION KIT, GPT-750 MARK I</b>	
		<b>BL-102</b>	
		MJT 4-16-59	
		DRAWN	CHECKED
		FINAL APPROVAL	
		<b>IN-1065 A</b>	
		ELEC. DES. APP.	MECH. DES. APP.

IN-1067



NOTICE TO PERSONS RECEIVING THIS DRAWING

THE TECHNICAL MATERIEL CORPORATION claims proprietary right in the material disclosed hereon. This drawing is issued in confidence for engineering information only and may not be reproduced or used to manufacture anything shown hereon without permission from THE TECHNICAL MATERIEL CORPORATION to the user. This drawing is loaned for mutual assistance and is subject to recall at any time.

Property of:  
 THE TECHNICAL MATERIEL CORPORATION  
 MAMARONECK, NEW YORK

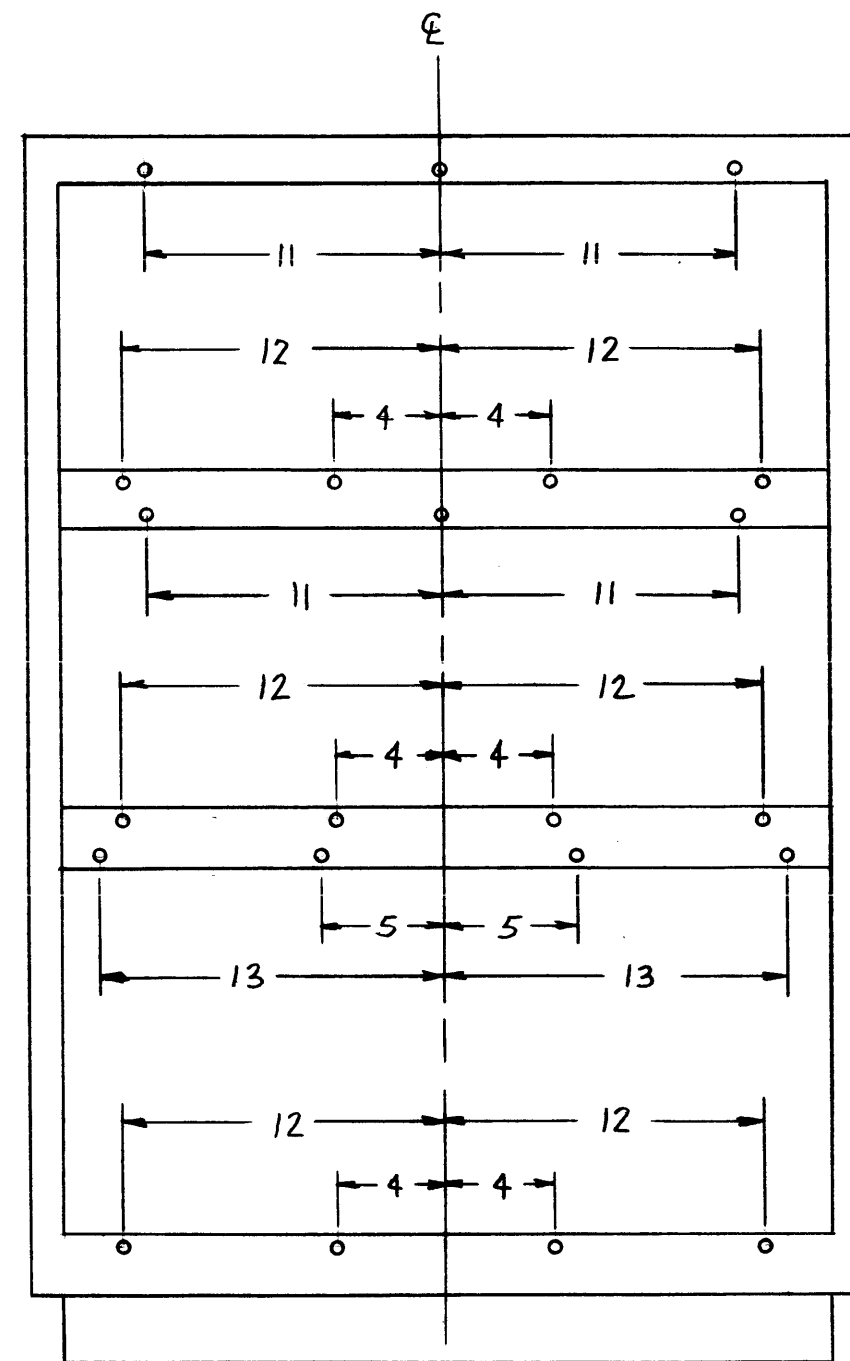
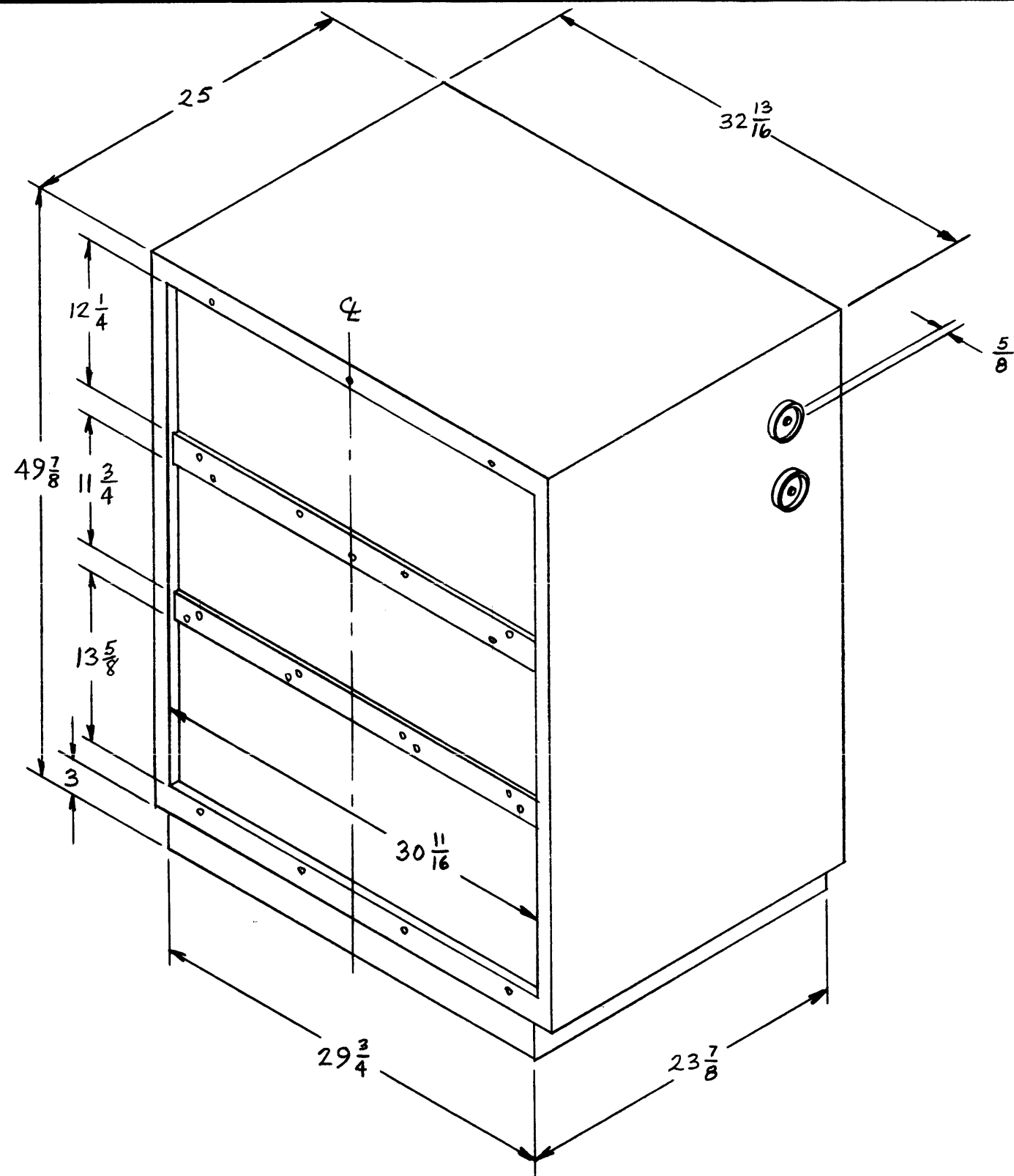
ISSUE	ITEM	CHANGED FROM	DATE	CH. NO.	DRAFTS	CHECKER	ENG. APP.
TOLERANCES		SCALE:					
DEC. DIM. ±		MAXIMUM ALLOWABLE TOLERANCES HAVE BEEN DETERMINED AND ANY DEVIATIONS WILL BE CAUSE FOR REJECTION. REMOVE ALL BURRS AND SHARP EDGES					
FRAC. DIM. ±							
ANGULAR DIM. ±							

1	SPP-10			
REQ. PER UNIT	MODEL	PROJECT NO.	ASS'Y. NO.	DATE
USED ON				

REQ. ITEM	PART NO.	DESCRIPTION	SYMBOL
		THE TECHNICAL MATERIEL CORP.	
STOCK SIZE		MAMARONECK, NEW YORK	
MATERIAL		DIMENSIONAL OUTLINE	
		FOR MODEL SPP-10	
		MJT 2-5-59	<i>CMB</i>
TYPE & TEMPER	HEAT TREAT. SPEC.	DRAWN	CHECKED
FINISH & SPEC. NO.		ELEC. DES. APP.	MECH. DES. APP.
			IN-1067



IN-1075



FRONT VIEW  
HOLE DIMENSIONS

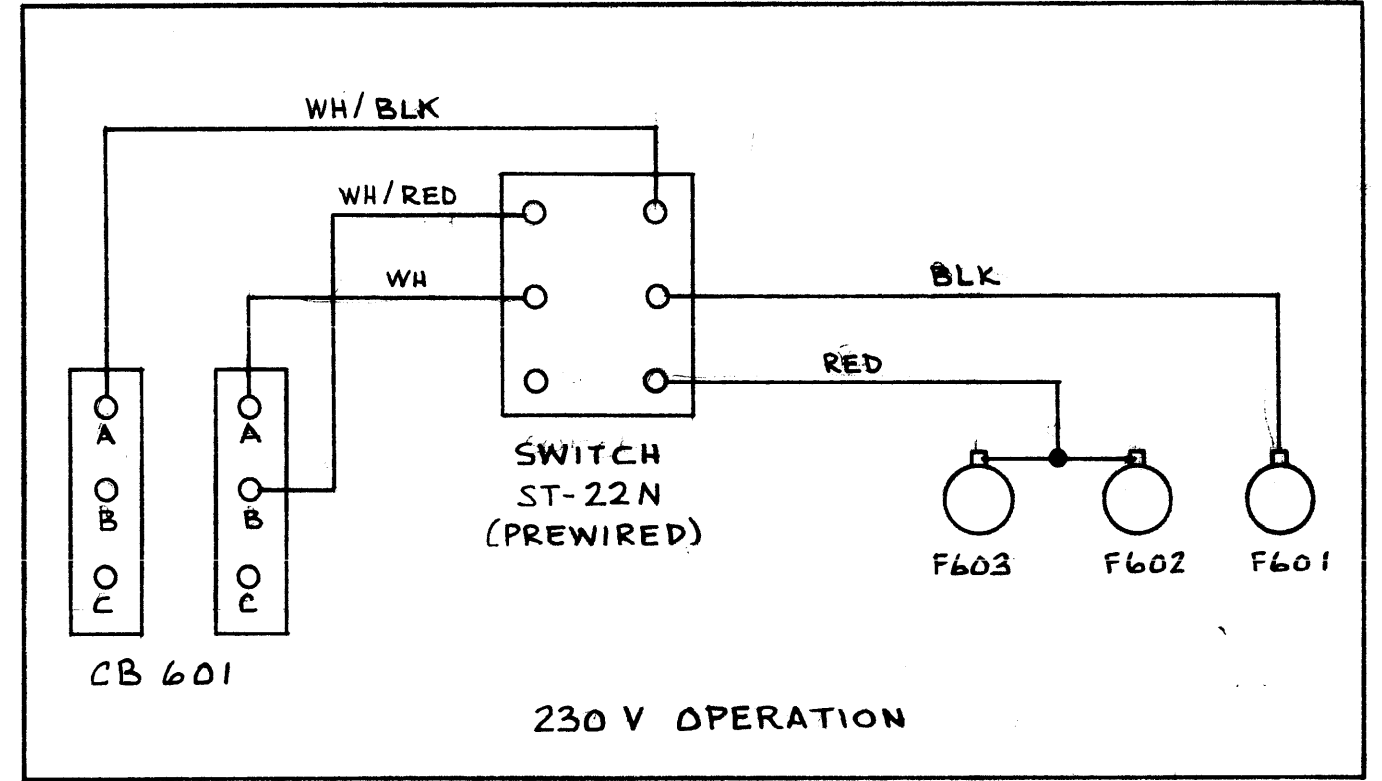
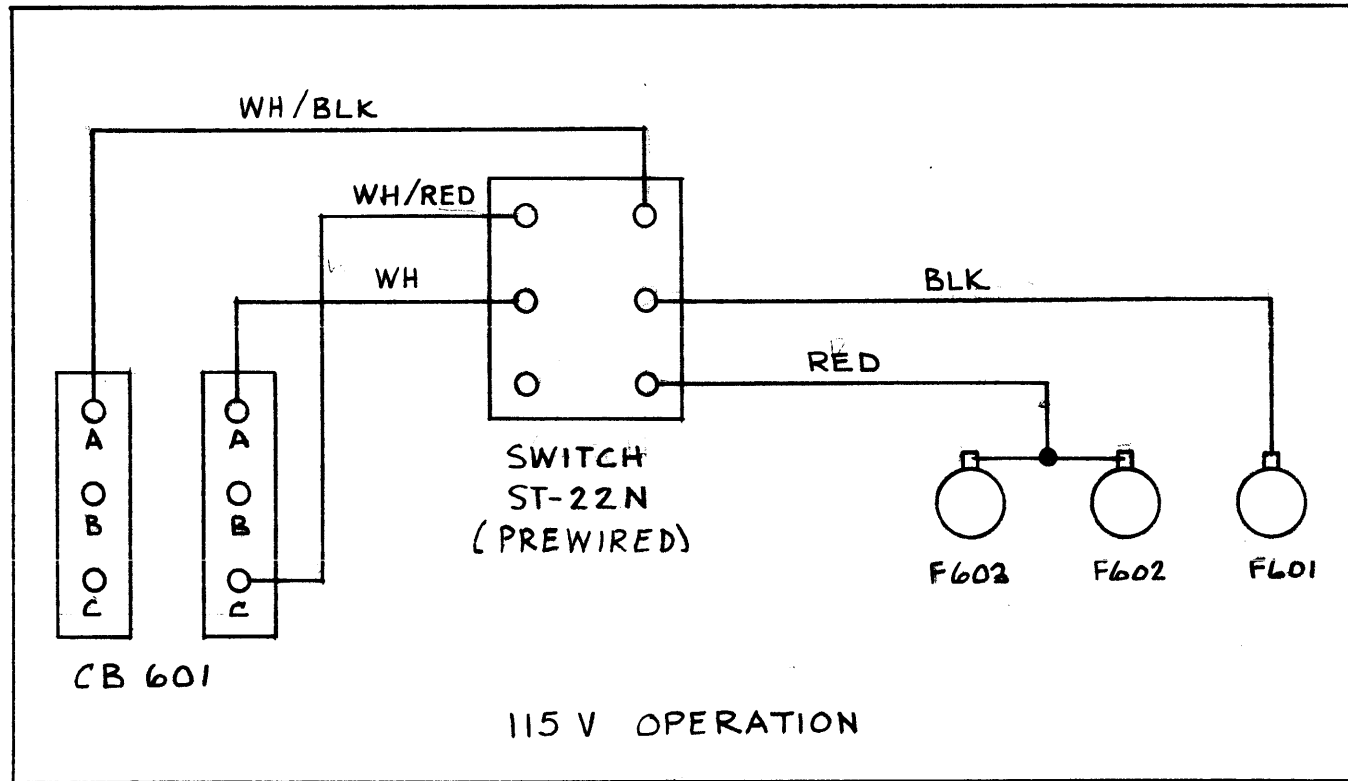
ISSUE	ITEM	CHANGED FROM	DATE	CH. NO.	DRAFTS	CHECKER	ENG. APP.
Ø		ORIGINAL RELEASE	8/19/64	Ø			
TOLERANCES			SCALE:				
DEC. DIM. ±			MAXIMUM ALLOWABLE TOLERANCES HAVE BEEN DETERMINED AND ANY DEVIATIONS WILL BE CAUSE FOR REJECTION.				
FRAC. DIM. ±			REMOVE ALL BURRS AND SHARP EDGES				
ANGULAR DIM. ±							

REQ. PER UNIT	CAB-7	PROJECT NO.	ASS'Y. NO.	DATE
	MODEL			
USED ON				

REQ. ITEM	PART NO.	DESCRIPTION	SYMBOL
		THE TECHNICAL MATERIEL CORP. MAMARONECK, NEW YORK	
STOCK SIZE		DIMENSIONAL OUTLINE DRAWING	
MATERIAL		MODEL CAB-7	
TYPE & TEMPER		MJT 11-7-58	
HEAT TREAT. SPEC.		DRAWN	CHECKED
FINISH & SPEC. NO.		FINAL APPROVAL	
		ELEC. DES. APP. MECH. DES. APP.	

IN-1075





**NOTICE TO PERSONS RECEIVING THIS DRAWING**

THE TECHNICAL MATERIEL CORPORATION claims proprietary right in the material disclosed hereon. This drawing is issued in confidence for engineering information only and may not be reproduced or used to manufacture anything shown hereon without permission from THE TECHNICAL MATERIEL CORPORATION to the user. This drawing is loaned for mutual assistance and is subject to recall at any time.

Property of:  
THE TECHNICAL MATERIEL CORPORATION  
MAMARONECK, NEW YORK

A	1	SEE SHEET #1	7-19-66	16583	RME	OCB	
ISSUE	ITEM	CHANGED FROM	DATE	CH. NO.	DRAFTS	CHECKER	ENG. APP.
TOLERANCES			SCALE:				
DEC. DIM. ±			MAXIMUM ALL WABLE TOLERANCES HAVE BEEN DETERMINED AND ANY DEVIATIONS WILL BE CAUSE FOR REJECTION:				
FRAC. DIM. ±			REMOVE ALL BURRS AND SHARP EDGES				
ANGULAR DIM. ±			REQ. PER UNIT	MODEL	PROJECT NO.	ASSY. NO.	DATE

REQ.	ITEM	PART NO.	DESCRIPTION	SYMBOL
STOCK SIZE			THE TECHNICAL MATERIEL CORP. MAMARONECK, NEW YORK	
MATERIAL			MODIFICATION OF GPT-750()-1 FOR STANDBY OPERATION - VMO	
TYPE & TEMPER		HEATTREAT. SPEC.	6-24-59 MJT	<i>[Signature]</i>
FINISH & SPEC. NO.		ELEC. DE . APP	MECH. DES. APP	FINAL A