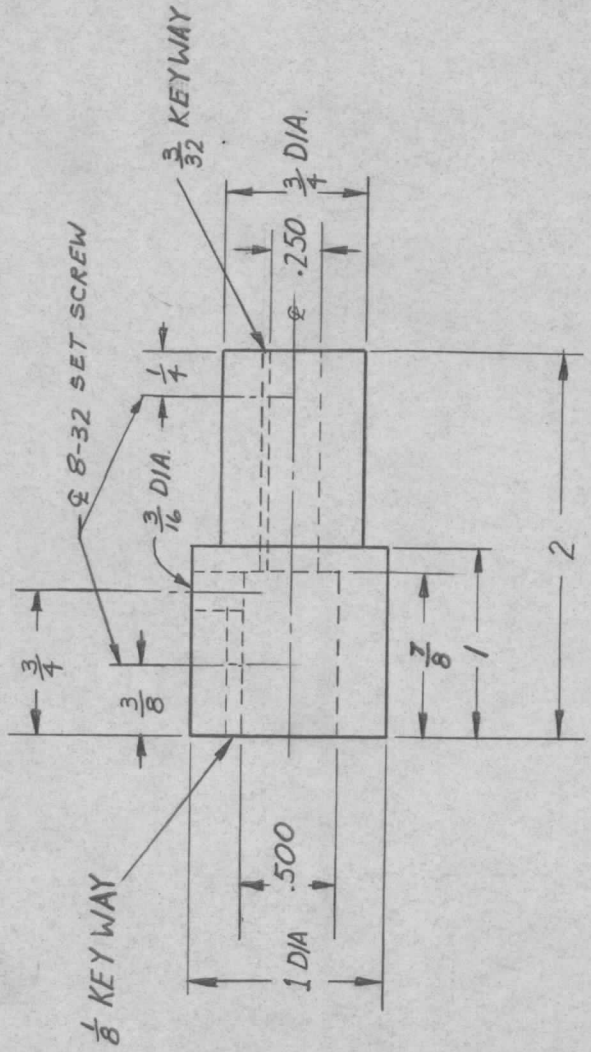


QTY	MODEL USED ON	ASS'Y NO.	LTR	DESCRIPTION	DATE	E.M.N.NO	DRAFT	CHKD	APPD
2	SPT-3KVHF	AX8081	Ø	ORIG REL FOR PROD	1/3/69	4	GE		JLO



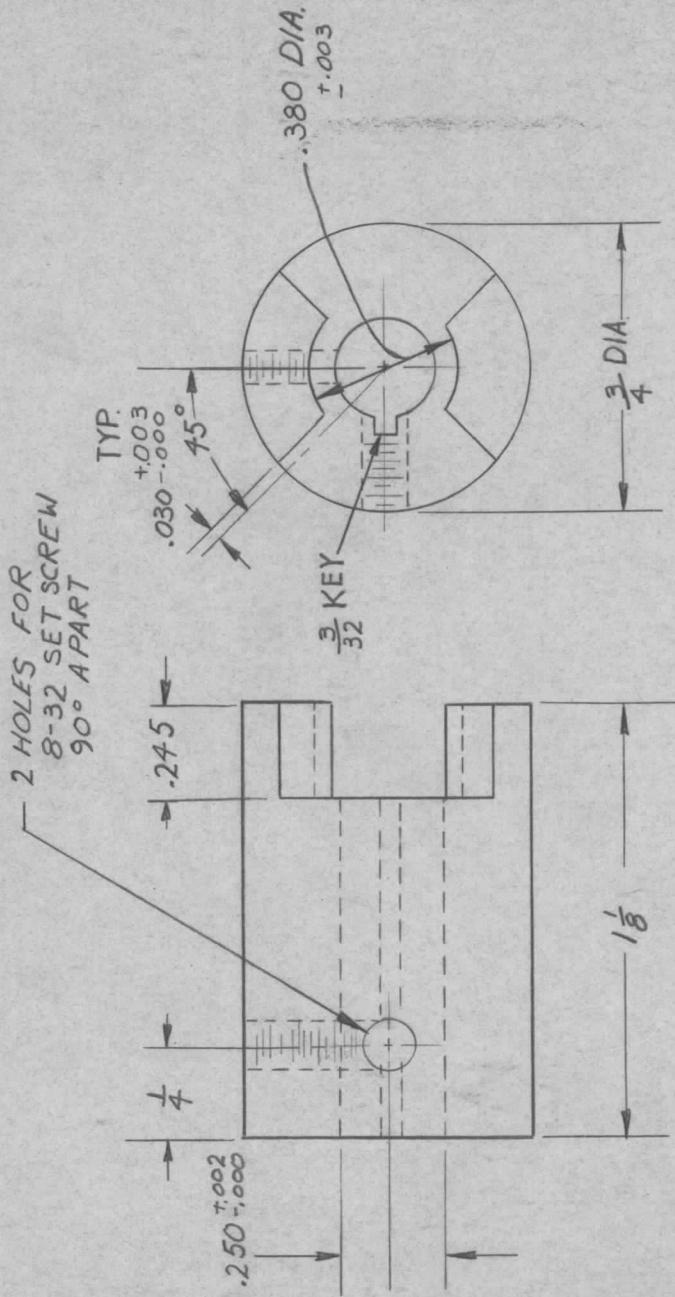
UNLESS OTHERWISE SPECIFIED DIMENSIONS ARE IN INCHES AND INCLUDE CHEMICALLY APPLIED OR PLATED FINISHES	REQ'D ITEM	PART NUMBER	DESCRIPTION	SYM.
DECIMALS X ± .05 XX ± .01 .XXX ± .005	FINAL APPROVAL	DATE	LIST OF MATERIAL	
FRACTIONS 1/64 ANGLES 0°-30'	MATERIAL ALUM 6061-T6	1/3/69	THE TECHNICAL MATERIEL CORP. MAMARONECK, NEW YORK	
FINISH S404 YEL IRIDITE	MECH. DES. ELECT. DES.	1/3/69 11/1/69	MOTOR COUPLER	
NOTICE TO PERSONS RECEIVING THIS DRAWING THE TECHNICAL MATERIEL CORPORATION claims proprietary right in the material disclosed hereon. This drawing is issued in confidence for engineering information only and may not be reproduced or used to manufacture anything shown hereon without permission from THE TECHNICAL MATERIEL CORPORATION to the user. This drawing is loaned for mutual assistance and is subject to recall at any time.	CHECKED DRAWN C. GROB	DATE DATE 11/1/69	SIZE A	ISSUE Ø
			CODE IDENT. NO. 82679	DWG NO. MC8001
			SCALE	SHEET 1 OF 1

APPLICATION

QTY	MODEL USED ON	ASSY NO.	LTR
8	SPT 3KVHF	AX8080	Ø
6	SPT3KVHF	AX8081	

REVISIONS

DESCRIPTION	DATE	E.M.N.NO	DRAFT	CHKD	APPD
ORIG REL FOR PROD	1-3-69	-4	GE		HDe



UNLESS OTHERWISE SPECIFIED DIMENSIONS ARE IN INCHES AND INCLUDE CHEMICALLY APPLIED OR PLATED FINISHES	REQ'D	ITEM	PART NUMBER	DESCRIPTION	SYM.
	LIST OF MATERIAL				
DECIMALS	THE TECHNICAL MATERIEL CORP.				
FRACTIONS	MAMARONECK, NEW YORK				
.X ± .05 TOLS. 1/64	FINAL APPROVAL	DATE	COUPLING		
.XX ± .01 ANGLES 0° .30'	MECH. DES.	DATE			
.XXX ± .005	ELECT. DES.	DATE			
MATERIAL	CHECKED	DATE			
ALUM 6061-T6	DRAWN	DATE			
FINISH					
S104 IRIDITE					

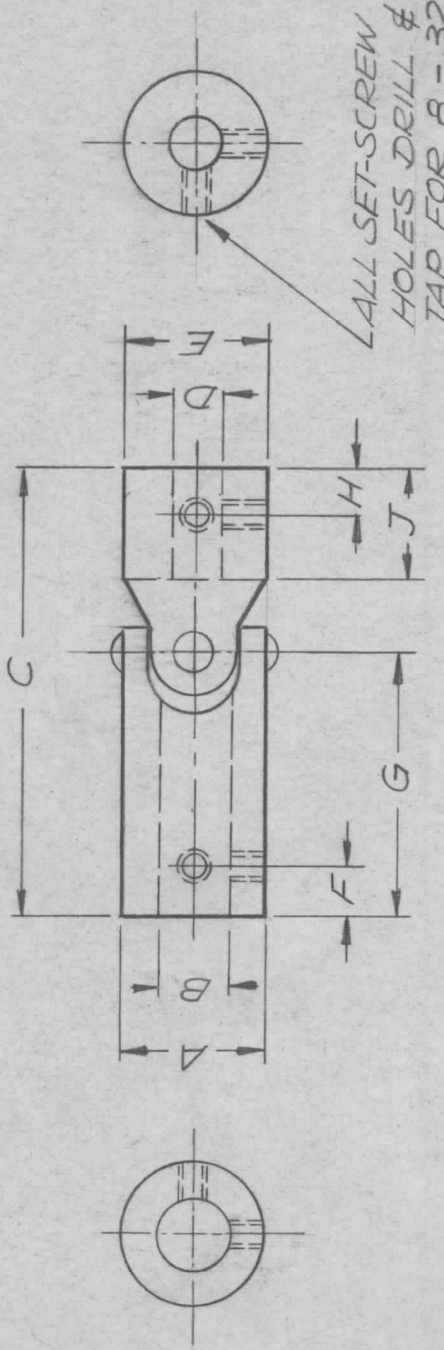
SIZE	CODE IDENT. NO.	DWG NO.	ISSUE
A	82679	MC 8002	1
SCALE		SHEET	OF
		1	1

NOTICE TO PERSONS RECEIVING THIS DRAWING
 THE TECHNICAL MATERIEL CORPORATION claims proprietary right in the material disclosed herein. This drawing is issued in confidence for engineering information only and may not be reproduced or used to manufacture anything shown hereon without permission from THE TECHNICAL MATERIEL CORPORATION to the user. This drawing is loaned for mutual assistance and is subject to recall at any time.

APPLICATION

REVISIONS

QTY	MODEL USED ON	ASS'Y NO.	LTR	DESCRIPTION	DATE	E.M.N.NO	DRAFT	CHKD	APPD
			Ø	ORIG REL FOR PROD	1-3-68	4	GE		J.D.



DIMENSIONS (INCHES)

TMC P/N	A	B	C	D	E	F	G	H	J	NOTE
MC8003-1	3/4		2-11/16		3/4		1-11/32			
-2	3/4	3/8	2-5/16	1/4	3/4	1/4	1-11/32	1/4	37/64	MACHINE FROM MC8003-1
-3	3/4	3/8	2-5/16	1/2	3/4	1/4	1-11/32	1/4	37/64	MACHINE FROM MC8003-1

UNLESS OTHERWISE SPECIFIED DIMENSIONS ARE IN INCHES AND INCLUDE CHEMICALLY APPLIED OR PLATED FINISHES

DECIMALS
X ± .05
.XX ± .01
.XXX ± .005

FRACTIONS
1/64
ANGLES
0° - 30°

MATERIAL

FINISH

(MC8003-1 ONLY)
(S401-15, JS 75)

REQ'D	ITEM	PART NUMBER	DESCRIPTION	SYM.
LIST OF MATERIAL				
FINAL APPROVAL			THE TECHNICAL MATERIEL CORP. MAMARONECK, NEW YORK	
MECH. DES.				
ELECT. DES.				
CHECKED				
DRAWN				
UNIVERSAL JOINT.				

NOTICE TO PERSONS RECEIVING THIS DRAWING
THE TECHNICAL MATERIEL CORPORATION claims proprietary right in the material disclosed hereon. This drawing is issued in confidence for engineering information only and may not be reproduced or used to manufacture anything shown hereon without permission from THE TECHNICAL MATERIEL CORPORATION to the user. This drawing is loaned for mutual assistance and is subject to recall at any time.

SIZE	CODE IDENT. NO.	DWG NO.	ISSUE
A	82679	MC 8003	Ø
SCALE	SHEET	OF	

IF IT IS FOUND DESIRABLE TO CHANGE ANY TOLERANCE OR OTHER DETAIL SPECIFIED ON THIS DRAWING NOTIFY THE PURCHASER PROMPTLY.

STANDARD DRAWING

MC10001

MAXIMUM ALLOWABLE TOLERANCES HAVE BEEN DETERMINED AND DEVIATIONS WILL BE CAUSE FOR REJECTION. REMOVE ALL BURRS AND SHARP EDGES

USED ON

MODEL

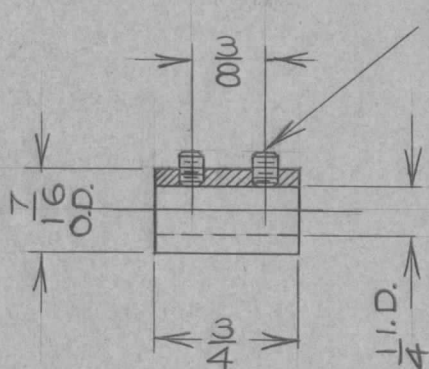
PROJECT NO.

ASS'Y. NO.

DATE

AMC6-5 CE646

JUNE 22
1959



ALLEN HD SET SCREWS-
#6

SUPERSEDED

DIRECTLY REPLACED BY MC-102

7-26-63 9592 SR.

NOTICE TO PERSONS RECEIVING THIS DRAWING

THE TECHNICAL MATERIEL CORPORATION claims proprietary right in the material disclosed hereon. This drawing is issued in confidence for engineering information only and may not be reproduced or used to manufacture anything shown hereon without permission from THE TECHNICAL MATERIEL CORPORATION to the user. This drawing is loaned for mutual assistance and is subject to recall at any time.

Property of:

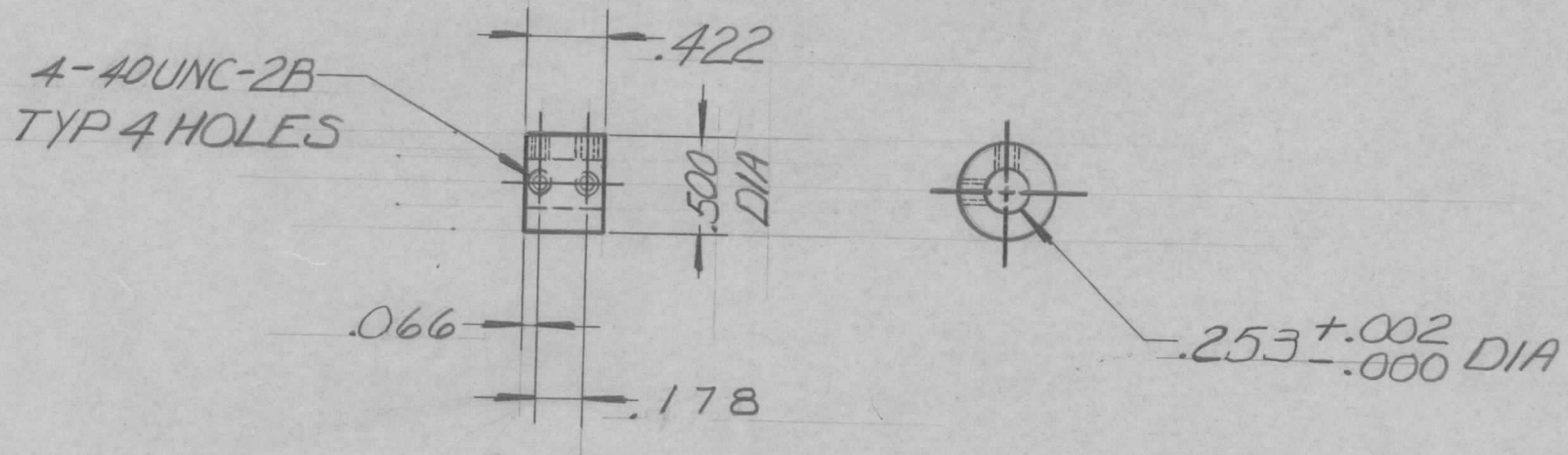
THE TECHNICAL MATERIEL CORPORATION
MAMARONECK, NEW YORK

REF: C.E.S. PART #120

REQ.	ITEM	PART NO.	DESCRIPTION	SYMBOL
			TMC (Canada) LIMITED OTTAWA ONTARIO	
		STOCK SIZE		
		MATERIAL	WEIGHT PER PC.	
		MECH. COUPLING-		
			RIGID	
		TYPE & TEMPER	DCM	M. Ver.
			DRAWN	ELEC. DES. APP. MECH. DES. APP.
		HEAT TREAT. SPEC.		1800
			CHECKED	FINAL APPROVAL
		FINISH & SPEC. NO.		MC10001 A

A	1	SUPERSEDED BY MC-102	7-26-63	9592	SR.	MR	MR
ISSUE	ITEM	CHANGED FROM	DATE	CN. NO.	DRAFTS	CHECKER	ENG. APP.
TOLERANCES			SCALE 1:1				
ALL OTHERS	DEC. DIM. ± —	DRILL, PUNCH, COMMERCIAL STOCK SIZES AND MANUFACTURERS TOLERANCES ARE NOT INCLUDED.					
	FRAC. DIM. ± —						
	ANGULAR DIM. ± —						

ISSUE	ITEM	CHANGED FROM	DATE	CN. NO.	DRAFTS	CHECKER	ENG. APP.	REQ.	ITEM	PART NO.	DESCRIPTION	SYMBOL
Ø		PROD RELEASE	30 JUN 70		RW							
A		REVISED PER CEMN.855	18 NOV 70		G.C.T.		MH					



MTR100A	087-70		4 JUN 70	.500 DIA		TMC (Canada) LIMITED	
MODEL	PROJECT NO.	ASS'Y. NO.	DATE	STOCK SIZE		OTTAWA	ONTARIO
USED ON				AL ALY	COUPLING		
MAXIMUM ALLOWABLE TOLERANCES HAVE BEEN DETERMINED AND DEVIATIONS WILL BE CAUSE FOR REJECTION. REMOVE ALL BURRS AND SHARP EDGES IF IT IS FOUND DESIRABLE TO CHANGE ANY TOLERANCE OR OTHER DETAIL SPECIFIED ON THIS DRAWING NOTIFY THE PURCHASER PROMPTLY.				575 H32			
				TYPE & TEMPER		DRAWN	
TOLERANCES				HEAT TREAT. SPEC.		FINAL APPROVAL	
DEC. DIM. ± .015 -X = .05 FRAC. DIM. ± 1/64 -XX = .01 ANGULAR DIM. ± 0° 30' -XXX = .005				IRIDITE S404		MCI0002 A	
SCALE 1/1				FINISH & SPEC. NO.			
DIMENSIONS IN INCHES UNLESS OTHERWISE SPECIFIED DRILL: PUNCH, COMMERCIAL STOCK SIZES AND MANUFACTURERS TOLERANCES ARE NOT INCLUDED.							

IF IT IS FOUND DESIRABLE TO CHANGE ANY TOLERANCE OR OTHER DETAIL SPECIFIED ON THIS DRAWING NOTIFY THE PURCHASER PROMPTLY.

MK-100

MAXIMUM ALLOWABLE TOLERANCES HAVE BEEN DETERMINED AND DEVIATIONS WILL BE CAUSE FOR REJECTION. REMOVE ALL BURRS AND SHARP EDGES

USED ON

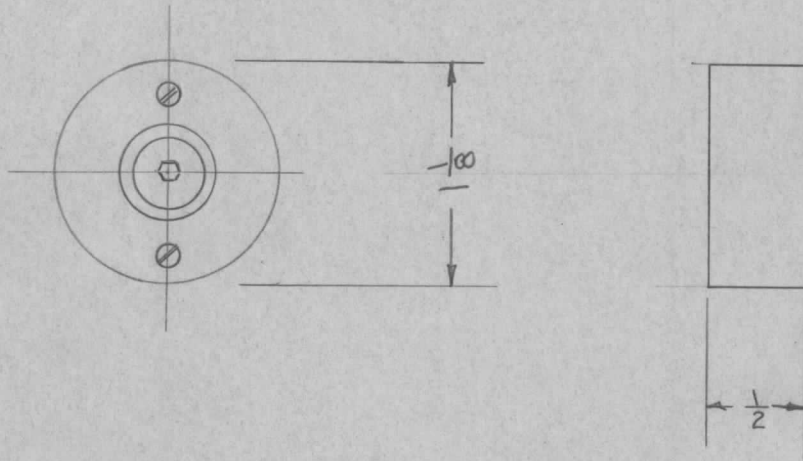
MODEL

PROJECT NO.

ASS'Y. NO.

DATE

ELECTRICAL CHARACTERISTICS:



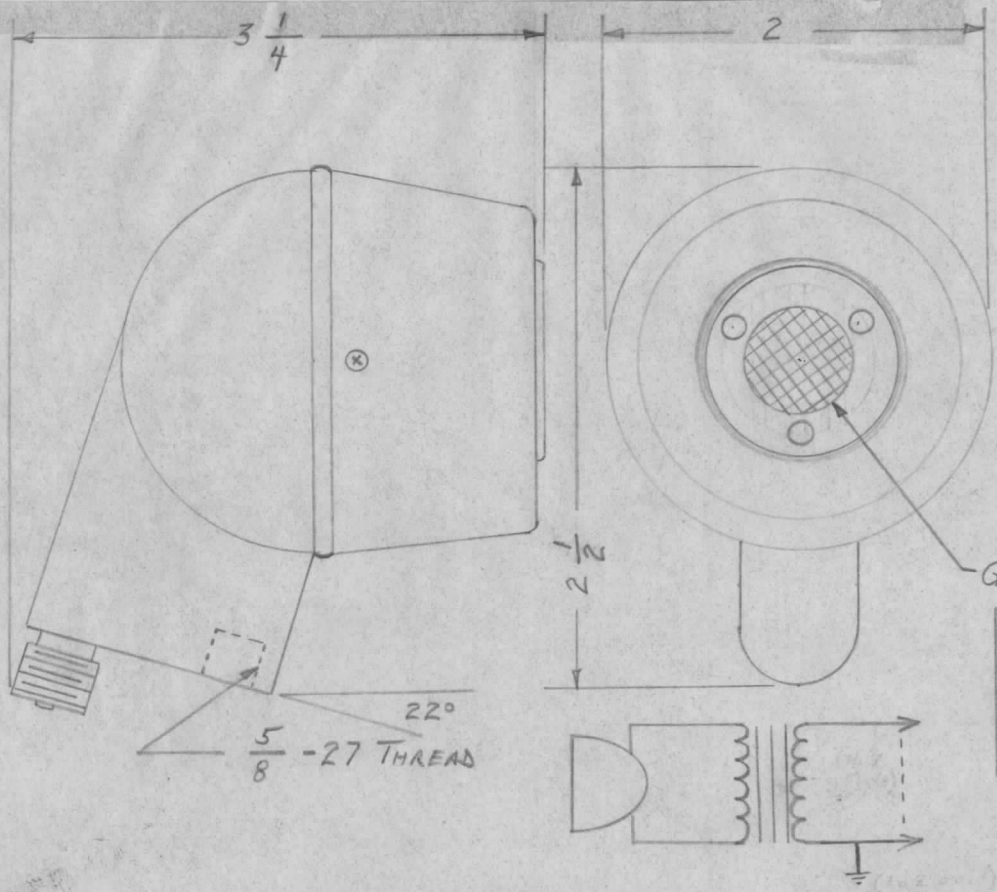
Note:
Dimensions For Ref Only.

REF: US NAVY BU AIR

REQ.	ITEM	PART NO.	DESCRIPTION	SYMBOL
			THE TECHNICAL MATERIEL CORP. MAMARONECK. NEW YORK	
STOCK SIZE				
			MICROPHONE, AIRCRAFT; RADIO	
MATERIAL			TYPE M-20	
WEIGHT PER PC.				
TYPE & TEMPER				
			DRAWN	
			ELEC. DES. APP.	
			MECH. DES. APP.	
HEAT TREAT. SPEC.			CHECKED	
			FINAL APPROVAL	
FINISH & SPEC. NO.			MK-100	

ISSUE	ITEM	CHANGED FROM	DATE	CN. NO.	DRAFTS	CHECKER	ENG. APP.
TOLERANCES			SCALE				
ALL OTHERS			DRILL, PUNCH, COMMERCIAL STOCK SIZES AND MANUFACTURERS TOLERANCES ARE NOT INCLUDED.				
DEC. DIM. ±							
FRAC. DIM. ±							
ANGULAR DIM. ±							

REQ. PER UNIT	USED ON			MK105	Ø
	MODEL	ASS'Y. NO.	DATE		
1	MK102	A1190	14 DEC 1965		



SPECIFICATIONS
 POLAR PATTERN: NONDIRECTIONAL
 GENERATING ELEMENT: DYNAMIC
 IMPEDANCE: SEE CHART
 CABLE CONNECTOR: PL250F
 CABLE: 16 FOOT SINGLE CONDUCTOR, SHIELDED
 CASE MATERIAL: DIE-CAST ZINC
 FINISH: SATIN CHROMIUM
 FREQUENCY RESPONSE: 0.1 TO 5KC
 OUTPUT LEVEL: -55 db (AT 1/4 INCH SOURCE)

GRILL DESIGN OPTIONAL

TMC PART No.	IMPEDANCE	OUTPUT REF. LEVEL
MK105-1	HIGH (25KΩ Nom)	1V/DYNE / CM ²
MK105-2	LOW (250Ω Nom)	1mW/10 DYNES / CM ²

STANDARD DRAWING

SCHEMATIC

REF: SW178

ISSUE	ITEM	CHANGED FROM	DATE	CH. NO.	DRAFTS	CHECKER	ENG. APP.	REQ. ITEM	PART NO.	DESCRIPTION	SYMBOL			
										THE TECHNICAL MATERIEL CORP. MAMARONECK, NEW YORK MICROPHONE, DYNAMIC, DIFFERENTIAL				
A		Spec. revised	10/14/70	20030	W.	P.E. & W.			STOCK SIZE					
Ø		ORIGINAL RELEASE	12/20/65			J. DeM...			MATERIAL					
TOLERANCES			SCALE: NONE 5401-306 (607)											
DEC. DIM. ± FRAC. DIM. ± ANGULAR DIM. ±			FOR REF. ONLY					MAXIMUM ALLOWABLE TOLERANCES HAVE BEEN DETERMINED AND ANY DEVIATIONS WILL BE CAUSE FOR REJECTION. REMOVE ALL BURRS AND SHARP EDGES						
									TYPE & TEMPER	HEAT TREAT. SPEC.	DRAWN	CHECKED	FINAL APPROVAL	
									FINISH & SPEC. NO.		JC 12/20/65		MK105	A

11/11/70

IF IT IS FOUND DESIRABLE TO CHANGE ANY TOLERANCE OR OTHER DETAIL SPECIFIED ON THIS DRAWING NOTIFY THE PURCHASER PROMPTLY.

MK-10002

MAXIMUM ALLOWABLE TOLERANCES HAVE BEEN DETERMINED AND DEVIATIONS WILL BE CAUSE FOR REJECTION. REMOVE ALL BURRS AND SHARP EDGES

USED ON

MODEL

PROJECT NO.

ASS'Y. NO.

DATE

NOTICE TO PERSONS RECEIVING THIS DRAWING

THE TECHNICAL MATERIEL CORPORATION claims proprietary right in the material disclosed hereon. This drawing is issued in confidence for engineering information only and may not be reproduced or used to manufacture anything shown hereon without permission from THE TECHNICAL MATERIEL CORPORATION to the user. This drawing is loaned for mutual assistance and is subject to recall at any time.

Property of:

THE TECHNICAL MATERIEL CORPORATION
MAMARONECK, NEW YORK

NOT DRAWN - See Drawing A-10003 (Size 4)

REQ.	ITEM	PART NO.	DESCRIPTION	SYMBOL
			TMC (Canada) LIMITED OTTAWA ONTARIO	
STOCK SIZE				
			MICROPHONE TYPE M-6A/UR	
MATERIAL		WEIGHT PER PC.		
TYPE & TEMPER			JRH	
			DRAWN	ELEC. DES. APP. MECH. DES. APP.
			27/2/1953	
HEAT TREAT. SPEC.			CHECKED	FINAL APPROVAL
FINISH & SPEC. NO.				MK-10002

ISSUE	ITEM	CHANGED FROM	DATE	CN. NO.	DRAFTS	CHECKER	ENG. APP.
TOLERANCES			SCALE				
ALL OTHERS			DIMENSIONS IN INCHES UNLESS OTHERWISE SPECIFIED DRILL, PUNCH, COMMERCIAL STOCK SIZES AND MANUFACTURERS TOLERANCES ARE NOT INCLUDED.				
DEC. DIM. ±							
FRAC. DIM. ±							
ANGULAR DIM. ±							

IF IT IS FOUND DESIRABLE TO CHANGE ANY TOLERANCE OR OTHER DETAIL SPECIFIED ON THIS DRAWING NOTIFY THE PURCHASER PROMPTLY.

STANDARD DRAWING

MK10003

MAXIMUM ALLOWABLE TOLERANCES HAVE BEEN DETERMINED AND DEVIATIONS WILL BE CAUSE FOR REJECTION. REMOVE ALL BURRS AND SHARP EDGES

USED ON

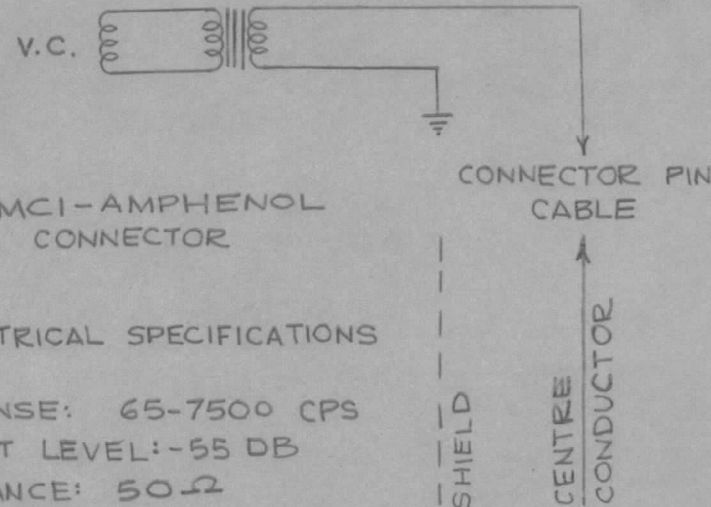
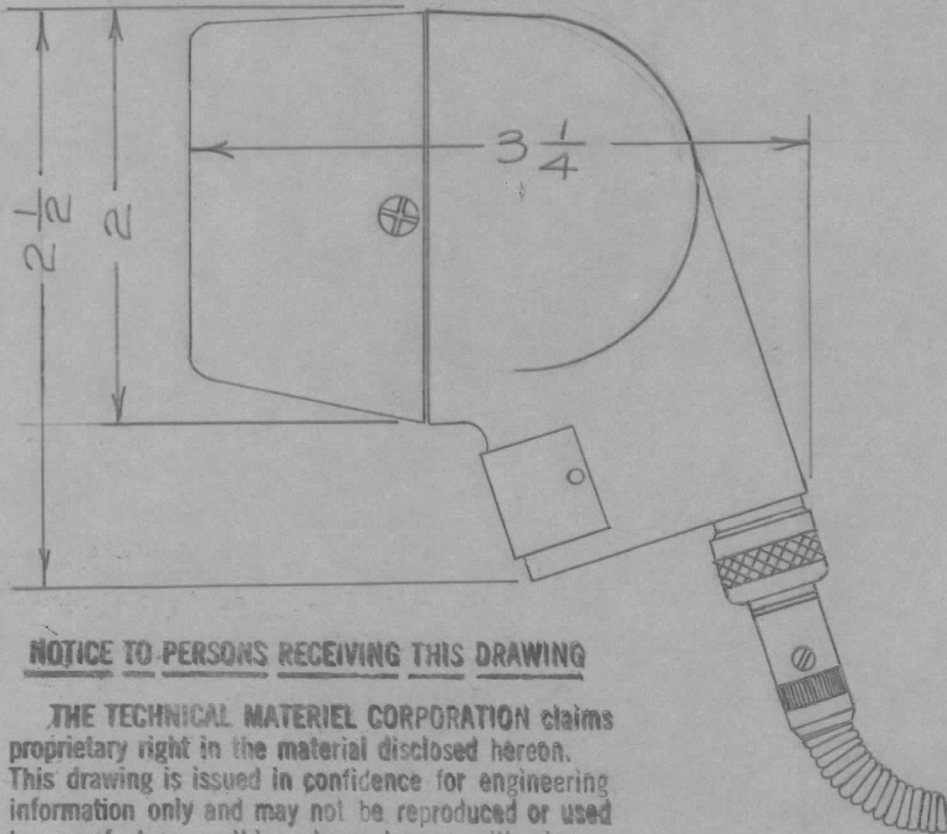
MODEL

PROJECT NO.

ASS'Y. NO.

DATE

8/26/60



MCI-AMPHENOL CONNECTOR

ELECTRICAL SPECIFICATIONS

RESPONSE: 65-7500 CPS
 OUTPUT LEVEL: -55 DB
 IMPEDANCE: 50 Ω

NOTE

REF LEVEL: 1MW / 10 DYNES / CM²
 SUPPLIED WITH 18'-0" CABLE.

NOTICE TO PERSONS RECEIVING THIS DRAWING

THE TECHNICAL MATERIEL CORPORATION claims proprietary right in the material disclosed hereon. This drawing is issued in confidence for engineering information only and may not be reproduced or used to manufacture anything shown hereon without permission from THE TECHNICAL MATERIEL CORPORATION to the user. This drawing is loaned for mutual assistance and is subject to recall at any time.

Property of:

THE TECHNICAL MATERIEL CORPORATION
 MAMARONECK, NEW YORK

REQ.	ITEM	PART NO.	DESCRIPTION	SYMBOL
			TMC (Canada) LIMITED OTTAWA ONTARIO	
STOCK SIZE				
			MICROPHONE	
		MATERIAL	WEIGHT PER PC.	
			JPC	
		TYPE & TEMPER	R.W. Thomas	
			DRAWN	ELEC. DES. APP.
			MECH. DES. APP.	
			CHECKED	FINAL APPROVAL
			MK10003	
		HEAT TREAT. SPEC.		
		FINISH & SPEC. NO.		

ISSUE	ITEM	CHANGED FROM	DATE	CN. NO.	DRAFTS	CHECKER	ENG. APP.
TOLERANCES			SCALE S10045-21-605				
ALL OTHERS			DIMENSIONS IN INCHES UNLESS OTHERWISE SPECIFIED				
			DRILL, PUNCH, COMMERCIAL STOCK SIZES AND MANUFACTURERS TOLERANCES ARE NOT INCLUDED.				