

APPLICATION		REVISIONS							
QTY	MODEL USED ON	ASS'Y NO.	LTR	DESCRIPTION	DATE	E.M.N.NO	DRAFT	CHKD	APPD
2	SPT3K/VHF	AX8080 AX8081	Ø	ORIG RELEASE FOR PROD	4/11/69		CV		<i>[Signature]</i>

MFR (TMC CODE NO.): S401-487

MFR PART NUMBER: 4K872

ELECTRICAL SPECIFICATIONS

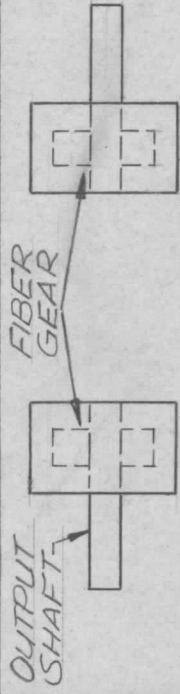
OUTPUT RPM;
F/L: 100.0, NL:306 HP: 1/15
F/L TORQUE;
IN. LBS CONT: 27

VOLTS: 115 VAC, 25/60 CPS

AMP: 1.3
INPUT RPM: 5000
INPUT MOTOR: 2M087

MECHANICAL SPECIFICATIONS

1/2 DIA SHAFT
2-5/8 SHAFT HEIGHT
52/1 RATIO



*TMC TO REMOVE OUTPUT
SHAFT AND REPLACE TO
OPPOSITE SIDE*

STANDARD TMC MODIFIED

UNLESS OTHERWISE SPECIFIED DIMENSIONS ARE IN INCHES AND INCLUDE CHEMICALLY APPLIED OR PLATED FINISHES		REQ'D ITEM	PART NUMBER	DESCRIPTION	SYM.
DECIMALS	FRACTIONS	LIST OF MATERIAL			
.X ± .05	1/64				
.XX ± .01	ANGLES				
.XXX ± .005	0° - 30°	FINAL APPROVAL	DATE	THE TECHNICAL MATERIEL CORP.	
MATERIAL		MECH. DES.	DATE	MAMARONECK, NEW YORK	
FINISH		ELECT. DES.	DATE	GEAR MOTOR, AC	
		CHECKED	DATE		
		DRAWN	DATE		

NOTICE TO PERSONS RECEIVING THIS DRAWING		SIZE	CODE IDENT. NO.	DWG NO.	ISSUE
THE TECHNICAL MATERIEL CORPORATION claims proprietary right in the material disclosed hereon. This drawing is issued in confidence for engineering information only and may not be reproduced or used to manufacture anything shown hereon without permission from THE TECHNICAL MATERIEL CORPORATION to the user. This drawing is loaned for mutual assistance and is subject to recall at any time.		A	82679	MO 8001	Ø
		SCALE		SHEET	OF