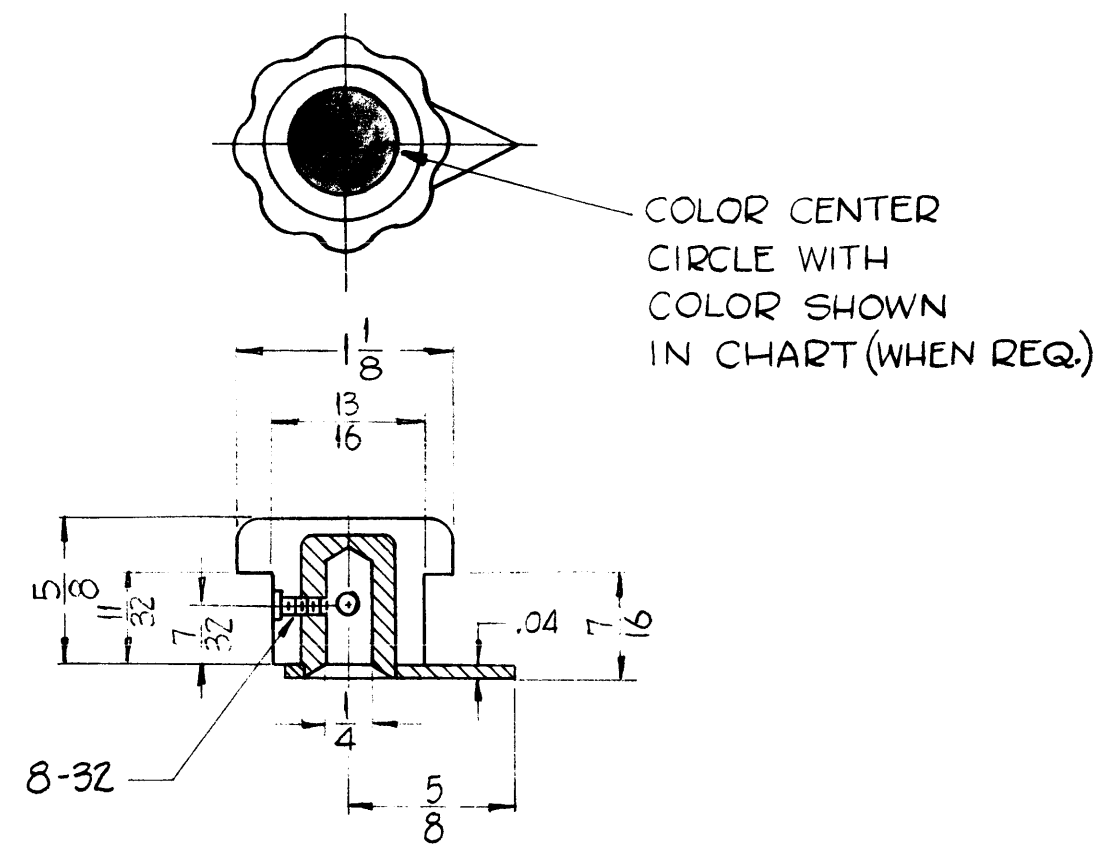


MP-100 E

STANDARD DRAWING

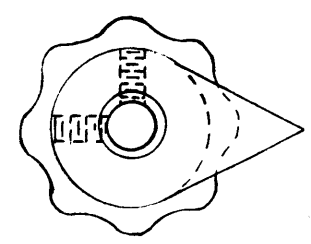
| TMC PART NO. | HARRY DAVIES CAT. NO. | KURZ KASCH CAT. NO. | FLUSH INSERT | COUNTER BORE | WITH POINTER | CENTER CIRCLE COLORED |
|--------------|-----------------------|---------------------|--------------|--------------|--------------|-----------------------|
| MP-100-1 | 4100U | 5-308-64-BB | NO | NO | NO | NO |
| MP-100-2 | | 5-308-64-BB-B | YES | NO | NO | NO |
| MP-100-3 | SPECIAL | 5-308-64-BB-DD | YES | 5/8 x 3/32 | NO | NO |
| MP-100-4 | 4100-AY | 5-308-64-BB-40275 | NO | NO | YES | NO |
| MP-100-5 | | | NO | NO | NO | RED |



COLOR CENTER CIRCLE WITH COLOR SHOWN IN CHART (WHEN REQ.)

DIMENSIONS FOR REFERENCE ONLY.

- NOTES -
- EACH KNOB SHALL BE DELIVERED WITH TWO ALLEN-HEAD TYPE, CADMIUM PLATED, CUP POINT SET SCREWS INSTALLED.
 - THE POINTER SHALL BE WHITE VINYLITE.
 - INSERT SHALL BE BRASS.



NOTICE TO PERSONS RECEIVING THIS DRAWING

THE TECHNICAL MATERIEL CORPORATION claims proprietary right in the material disclosed hereon. This drawing is issued in confidence for engineering information only and may not be reproduced or used to manufacture anything shown hereon without permission from THE TECHNICAL MATERIEL CORPORATION to the user. This drawing is loaned for mutual assistance and is subject to recall at any time.

Property of:
THE TECHNICAL MATERIEL CORPORATION
 MAMARONECK, NEW YORK

REF. ~ HARRY DAVIES MOLDING CO.
 REF. ~ KURZ KASCH INC.

| SYM | DESCRIPTION | DATE | CH. NO. | DRAFTS | CHECKER | ENG. APP. |
|-----|-----------------------|----------|---------|--------|---------|-------------|
| AE | REDRAWN and Added - 5 | 11-30-60 | 3625 | Dm | QC/B | [Signature] |

UNLESS OTHERWISE SPECIFIED:
 DIMENSIONS ARE IN INCHES
 TOLERANCES ON FRACTIONS ± 1/64 DECIMALS ± .05 ANGLES ± 1/2°

SCALE:
 MAXIMUM ALLOWABLE TOLERANCES HAVE BEEN DETERMINED AND ANY DEVIATIONS WILL BE CAUSE FOR REJECTION.
 REMOVE ALL BURRS AND SHARP EDGES

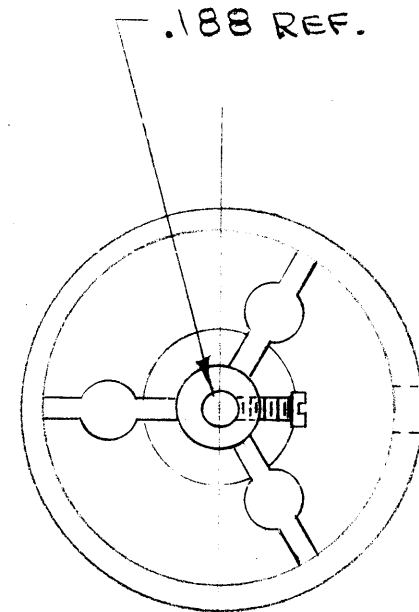
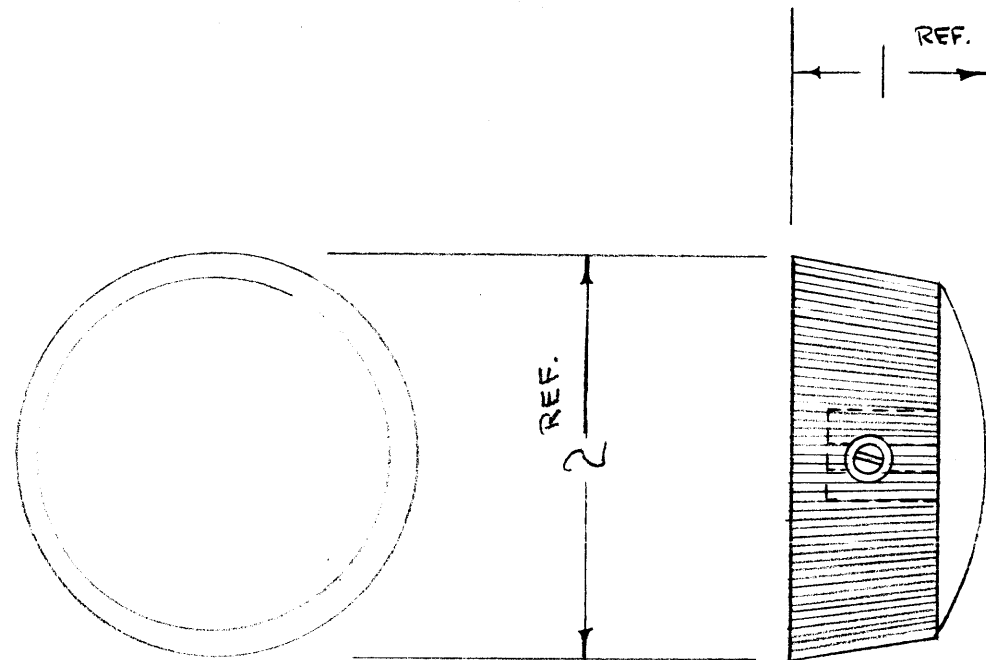
| REQ. PER UNIT | MODEL | SECTION | ASS'Y. NO. | DATE |
|---------------|-------|---------|------------|------|
| | | | | |

| REQ. ITEM | PART NO. | DESCRIPTION | SYMBOL |
|-----------|----------|--|----------------------------|
| | | THE TECHNICAL MATERIEL CORP. MAMARONECK, NEW YORK | |
| | | STOCK SIZE | |
| | | KNOB, INSTRUMENT FLUTED | |
| | | MATERIAL | |
| | | TYPE | |
| | | TYPE & TEMPER | |
| | | HEAT TREAT. SPEC. | |
| | | DRAWN [Signature] | CHECKER [Signature] |
| | | | FINAL APPROVAL [Signature] |
| | | FINISH & SPEC. NO. | |
| | | ELEC. DES. APP. | MECH. DES. APP. |
| | | MP-100 | E |

IF IT IS FOUND DESIRABLE TO CHANGE ANY TOLERANCE OR OTHER DETAIL SPECIFIED ON THIS DRAWING NOTIFY THE PURCHASER PROMPTLY.

MAXIMUM ALLOWABLE TOLERANCES HAVE BEEN DETERMINED AND DEVIATIONS WILL BE CAUSE FOR REJECTION. REMOVE ALL BURRS AND SHARP EDGES

MP-105



NOTICE TO PERSONS RECEIVING THIS DRAWING

THE TECHNICAL MATERIEL CORPORATION claims proprietary right in the material disclosed hereon. This drawing is issued in confidence for engineering information only and may not be reproduced or used to manufacture anything shown hereon without permission from THE TECHNICAL MATERIEL CORPORATION to the user. This drawing is loaned for mutual assistance and is subject to recall at any time.

Property of:
THE TECHNICAL MATERIEL CORPORATION
MAMARONECK, NEW YORK

REF: NATIONAL Co. # VO-16A

| REQ. | ITEM | PART NO. | DESCRIPTION | SYMBOL |
|------|------|--------------------|--|--------|
| | # | | THE TECHNICAL MATERIEL CORP. MAMARONECK, NEW YORK | |
| | | STOCK SIZE | | |
| | # | # | KNOB, INSTRUMENT TYPE | |
| | | MATERIAL | WEIGHT PER PC. | |
| | | | | |
| | | TYPE & TEMPER | | |
| | | | | |
| | | HEAT TREAT. SPEC. | | |
| | | | | |
| | | FINISH & SPEC. NO. | | |

| ISSUE | ITEM | CHANGED FROM | DATE | CN. NO. | DRAFTS | CHECKER | ENG. APP. |
|-------|------|--------------|------|---------|--------|---------|-----------|
| | | | | | | | |

| | | | | |
|--------------|-------|-------------|------------|---------|
| 1 | TAC-1 | 132 | A-715 | 1-20-54 |
| REQ PER UNIT | MODEL | PROJECT NO. | ASS'Y. NO. | DATE |

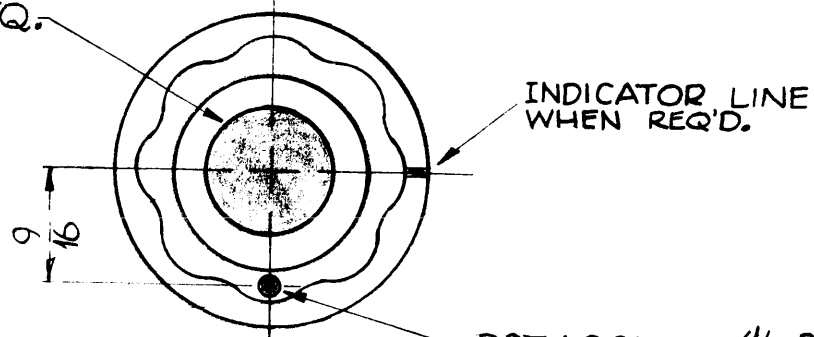
SCALE: #
DRILL, PUNCH, COMMERCIAL STOCK SIZES AND MANUFACTURERS TOLERANCES ARE NOT INCLUDED.

ALL OTHERS
DEC. DIM. ±
FRAC. DIM. ±
ANGULAR DIM. ±

MP-105

MP-108 B

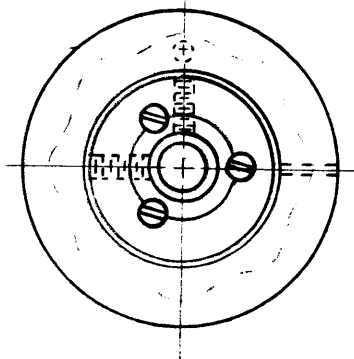
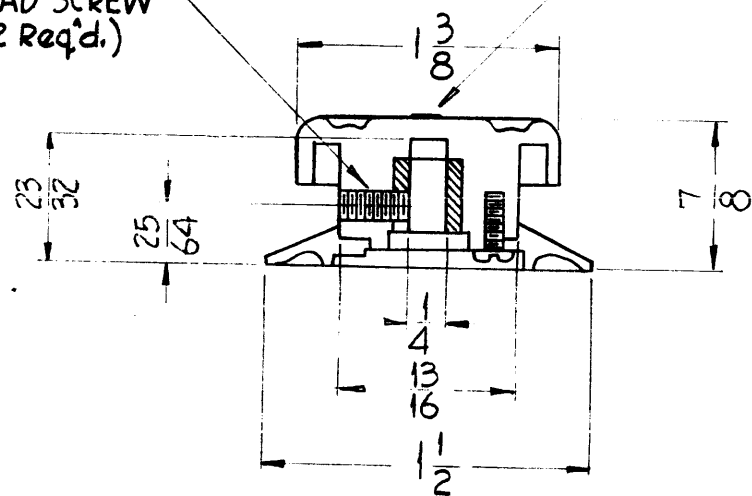
PAINT CENTER CIRCLE
COLOR DESIGNATED,
WHEN REQ'D.



INDICATOR LINE
WHEN REQ'D.

DOT LOCATION ($1/16$ Dia. x $1/32$ Deep.)
WHEN REQ'D.

8-32 ALLEN
HEAD SCREW
(2 Req'd.)



| TMC PART NO. | INDICATOR LINE | WHITE DOT | CENTER CIRCLE COLORED | MFG NO. |
|-----------------|-------------------|--------------|-----------------------------|------------------|
| MP-108-1 | UNFILLED | NONE | NONE | 4106 UNFILLED |
| MP-108-2 | WHITE FILLED | NONE | NONE | 4106 FILLED |
| MP-108-3 | UNFILLED | YES | NONE | 4106 DOT |
| MP-108-4 | WHITE FILLED | NONE | YELLOW | |
| MP-108-5 | WHITE FILLED | NONE | GREEN | |

* Center Circle to be Glossy Enamel.

NOTES - EACH KNOB SHALL BE DELIVERED WITH TWO
8-32 ALLEN HEAD TYPE, CADMIUM PLATED,
CUP POINT SET SCREWS INSTALLED.

THE INSERT SHALL BE BRASS.

NOTICE TO PERSONS RECEIVING THIS DRAWING

THE TECHNICAL MATERIEL CORPORATION claims
proprietary right in the material disclosed hereon.
This drawing is issued in confidence for engineering
information only and may not be reproduced or used
to manufacture anything shown hereon without per-
mission from THE TECHNICAL MATERIEL CORPORA-
TION to the user. This drawing is loaned for mutual
assistance and is subject to recall at any time.

Property of:

THE TECHNICAL MATERIEL CORPORATION
MAMARONECK, NEW YORK

REF.: HARRY DAVIES MOLDING CO. STYLE N°4106

| SYM | DESCRIPTION | DATE | CH. NO. | DRAFTS | CHECKER | ENG. APP. |
|-----|---------------------------|----------|---------|--------|---------|-------------|
| B | Redrawn and Added - 4 & 5 | 11-30-60 | 3625 | DM | JCB | [Signature] |

UNLESS OTHERWISE SPECIFIED:
DIMENSIONS ARE IN INCHES
TOLERANCES ON
FRACTIONS $\pm 1/64$ DECIMALS $\pm .05$ ANGLES $\pm 1/20$

SCALE:
MAXIMUM ALLOWABLE TOLERANCES HAVE
BEEN DETERMINED AND ANY DEVIATIONS
WILL BE CAUSE FOR REJECTION.
REMOVE ALL BURRS AND SHARP EDGES

| REQ. | ITEM | PART NO. | DESCRIPTION | SYMBOL |
|------|------|----------|--|--------|
| | | | THE TECHNICAL MATERIEL CORP. MAMARONECK, NEW YORK | |
| | | | KNOB, SKIRT TYPE | |
| | | | MATERIAL | |
| | | | TYPE & TEMPER | |
| | | | HEAT TREAT. SPEC. | |
| | | | FINISH & SPEC. NO. | |
| | | | ELEC. DES. APP. | |
| | | | MECH. DES. APP. | |
| | | | MP-108 | B |

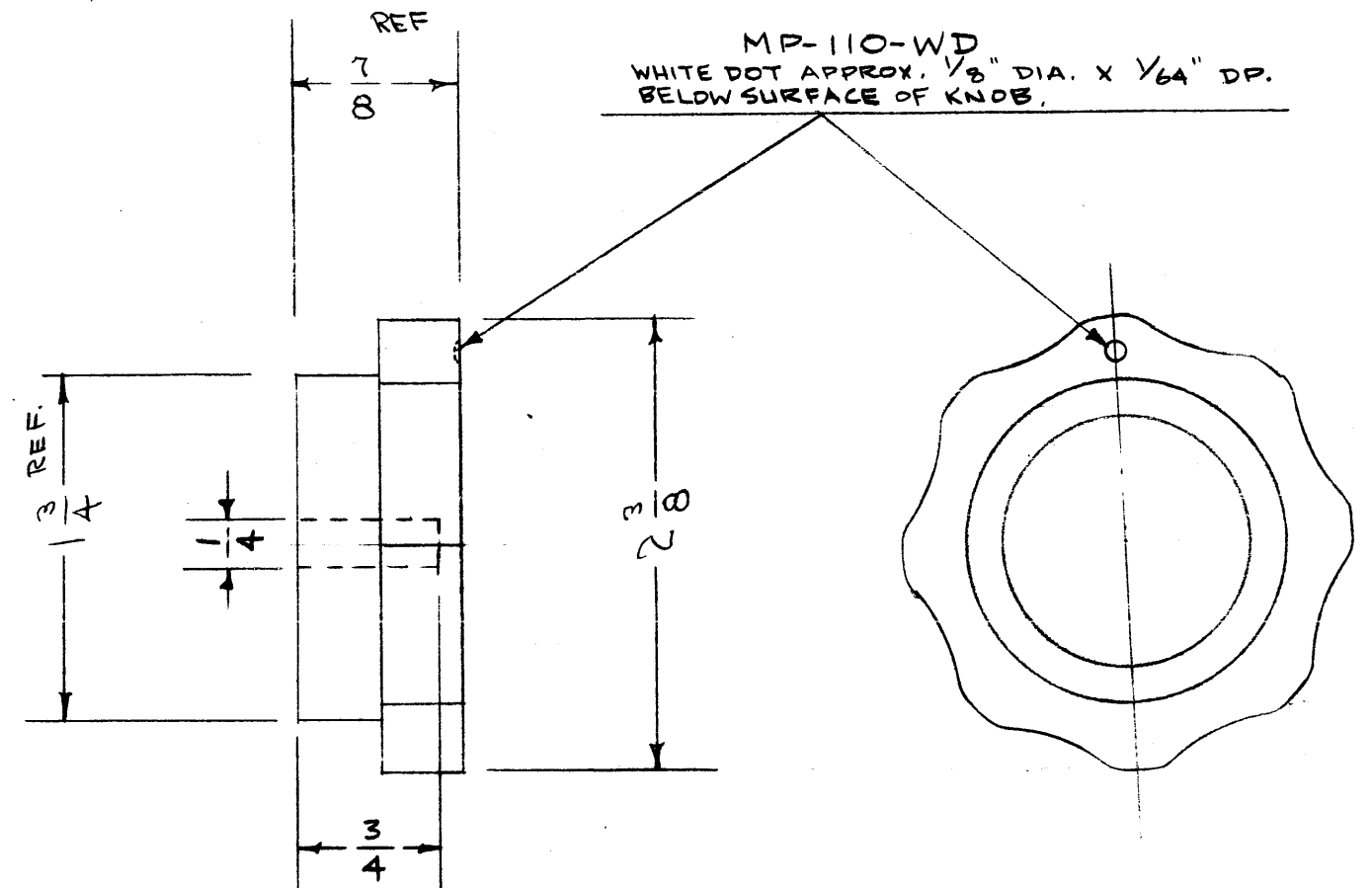
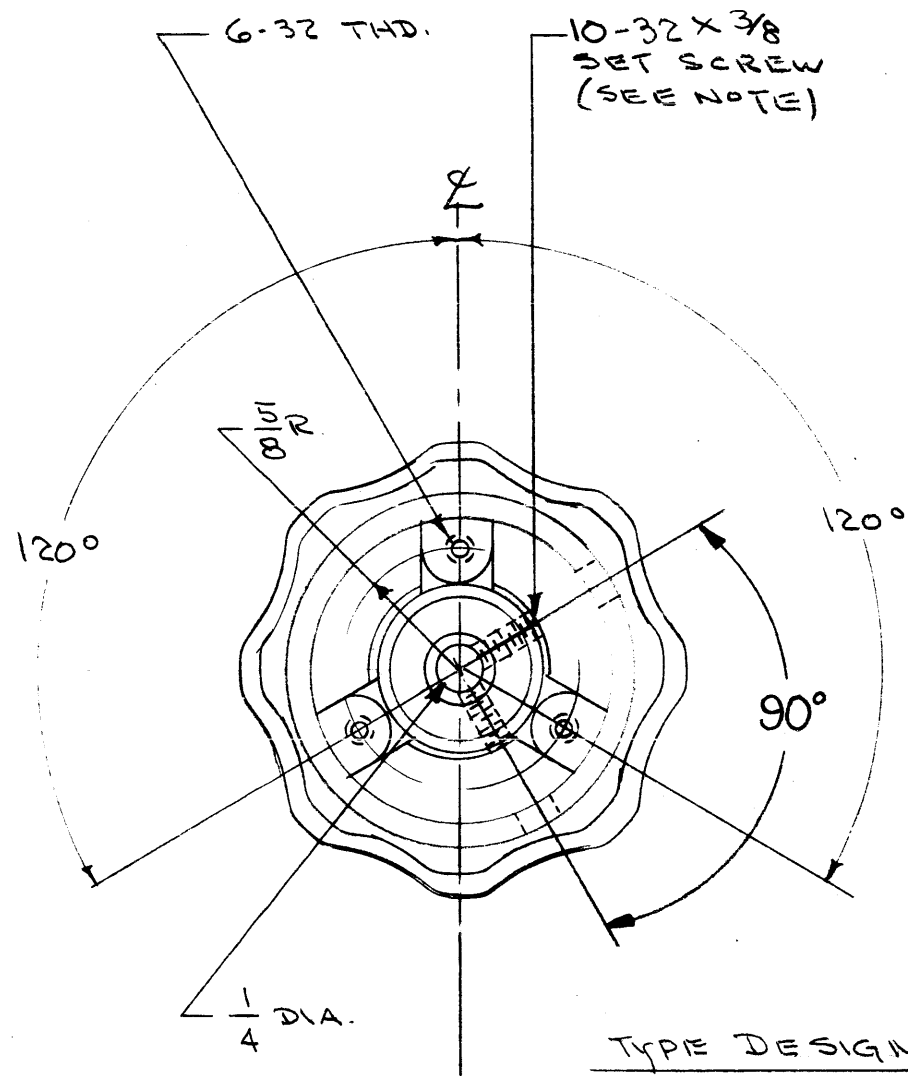
IF IT IS FOUND DESIRABLE TO CHANGE ANY TOLERANCE OR OTHER DETAIL SPECIFIED ON THIS DRAWING NOTIFY THE PURCHASER PROMPTLY.

MAXIMUM ALLOWABLE TOLERANCES HAVE BEEN DETERMINED AND DEVIATIONS WILL BE CAUSE FOR REJECTION. REMOVE ALL BURRS AND SHARP EDGES

STANDARD DRAWING

MP-110

TO BE SUPPLIED BY MANUFACTURER TWO 10-32 X 3/8 ALLEN HEAD TYPE, CAD. PLATED, CUP POINT SET SCREWS INSTALLED
INSERT SHALL BE BRASS.



TYPE DESIGNATION TO BE IN FOLLOWING FORM

- MP-110 - NO DOT
- MP-110-WD - WITH WHITE DOT

STYLE NO 4103-AD (w/o DOT) {w/o SKIRT
4103-CP (w/ DOT) {w/o SKIRT

NOTICE TO PERSONS RECEIVING THIS DRAWING

THE TECHNICAL MATERIEL CORPORATION claims proprietary right in the material disclosed hereon. This drawing is issued in confidence for engineering information only and may not be reproduced or used to manufacture anything shown hereon without permission from THE TECHNICAL MATERIEL CORPORATION to the user. This drawing is loaned for mutual assistance and is subject to recall at any time.

Property of:
THE TECHNICAL MATERIEL CORPORATION
MAMARONECK, NEW YORK

| ISSUE | ITEM | CHANGED FROM | DATE | CN. NO. | DRAFTS | CHECKER | ENG. APP. |
|-------|------|---|----------|---------|--------|---------|-----------|
| C | 1 | Hole Dim 1/4 was 3/4 - 90° Dim Added | 4-17-61 | 4691 | RL | OCB | |
| B | 1 | SET SCREWS Length Added | 10/11/57 | 2 | JAC | OCB | |
| A | 1 | SHAFT DIM. ADDED MP-110-WD ADDED 10-32 WAS 6-32 | 12/20/56 | 1 | W | JAC | |

| TOLERANCES | | SCALE: |
|------------|---|---|
| ALL OTHERS | DEC. DIM. ± FRAC. DIM. ± ANGULAR DIM. ± | DRILL, PUNCH, COMMERCIAL STOCK SIZES AND MANUFACTURERS TOLERANCES ARE NOT INCLUDED. |

| QTY. PER UNIT | MODEL | PROJECT NO. | ASSY. NO. | DATE |
|---------------|------------|-------------|-----------|---------|
| 1 | GPR(S) (R) | 297 | | A-20-SS |

REF: HARRY DAVIS

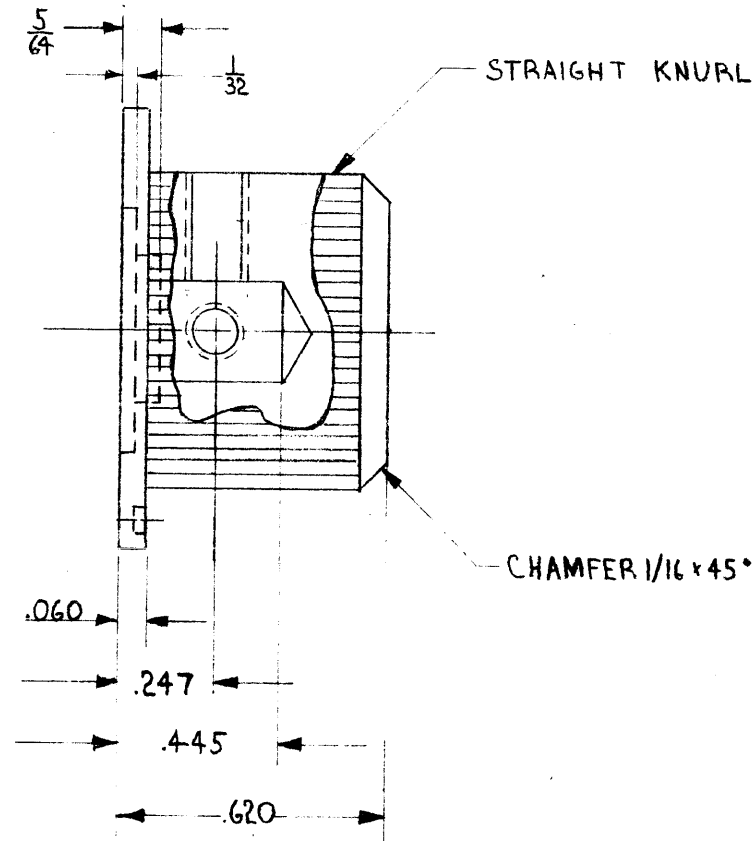
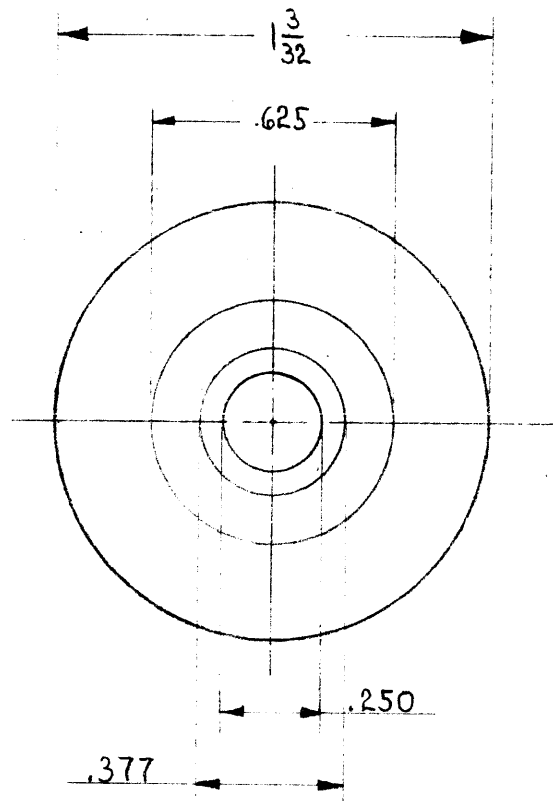
| REQ. | ITEM | PART NO. | DESCRIPTION | SYMBOL |
|------|------|----------|--|-----------------|
| | | | THE TECHNICAL MATERIEL CORP. MAMARONECK, NEW YORK | |
| | | | KNOB, INSTRUMENT TYPE | |
| | | | MATERIAL | WEIGHT PER PC. |
| | | | TYPE & TEMPER | LDD A-20-SS |
| | | | HEAT TREAT. SPEC. | |
| | | | DRAWN | ELEC. DES. APP. |
| | | | CHECKED | FINAL APPROVAL |
| | | | | MP-110 |

MP-116 A

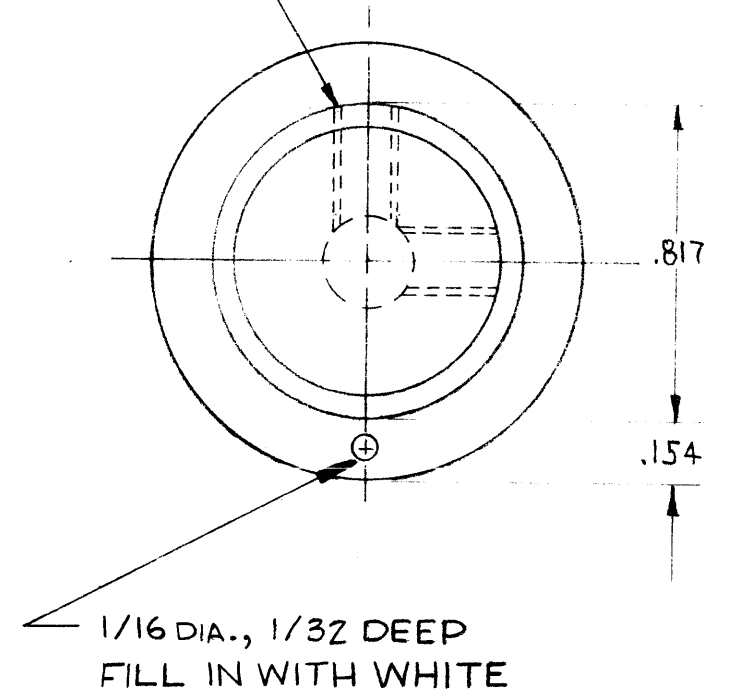
NOTICE TO PERSONS RECEIVING THIS DRAWING

THE TECHNICAL MATERIEL CORPORATION claims proprietary right in the material disclosed hereon. This drawing is issued in confidence for engineering information only and may not be reproduced or used to manufacture anything shown hereon without permission from THE TECHNICAL MATERIEL CORPORATION to the user. This drawing is loaned for mutual assistance and is subject to recall at any time.

Property of:
THE TECHNICAL MATERIEL CORPORATION
MAMARONECK, NEW YORK



(2) DRILL AND TAP FOR 8-32 SET SCREW



SCALE: TWICE SIZE

| ISSUE | ITEM | CHANGED FROM | DATE | CH. NO. | DRAFTS | CHECKER | ENG. APP. |
|-------|------|--|----------|---------|--------|---------|-------------|
| A | 1 | White Indicator line deleted replaced by 1/16 DIA. 1/32 deep dot | 12/27/60 | 3824 | RU | JCK | [Signature] |

| TOLERANCES | | SCALE: 5-461-89 (5757) | |
|--------------------|--|------------------------|-------|
| DE. DIM. ± 1/64 | MAXIMUM ALLOWABLE TOLERANCES HAVE BEEN DETERMINED AND ANY DEVIATIONS WILL BE CAUSE FOR REJECTION: REMOVE ALL BURRS AND SHARP EDGES | 1 | RFD-1 |
| FRAC. DIM. ± .005 | | 1 | RFB-1 |
| ANGULAR DIM. ± .5° | | | |

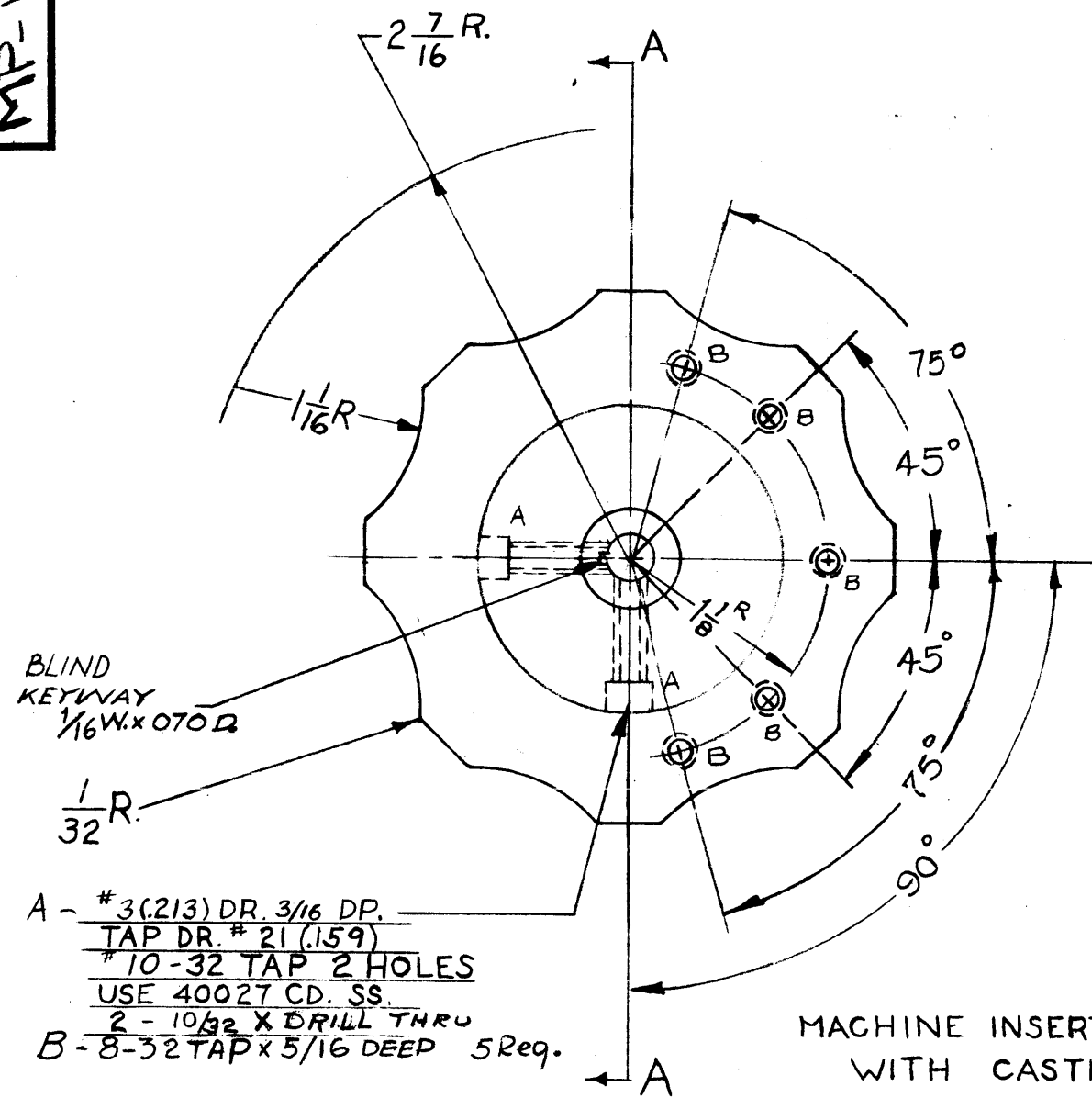
| REQ. PER UNIT | MODEL | PROJECT NO. | ASSY. NO. | DATE |
|---------------|-------|-------------|-----------|---------|
| 1 | RFD-1 | | | 1-14-60 |
| 1 | RFB-1 | | | 1-12-60 |

| REQ. ITEM | PART NO. | DESCRIPTION | SYMBOL |
|-----------|---------------|--|--------|
| | | THE TECHNICAL MATERIEL CORP. MAMARONECK, NEW YORK | |
| | ALUMINUM ROD | KNOB | |
| | BLACK ANODIZE | | |

| TYPE & TEMPER | HEAT TREAT. SPEC. | DRAWN | CHECKED | FINAL APPROVAL |
|---------------|-------------------|-------------|-------------|----------------|
| | | [Signature] | [Signature] | [Signature] |

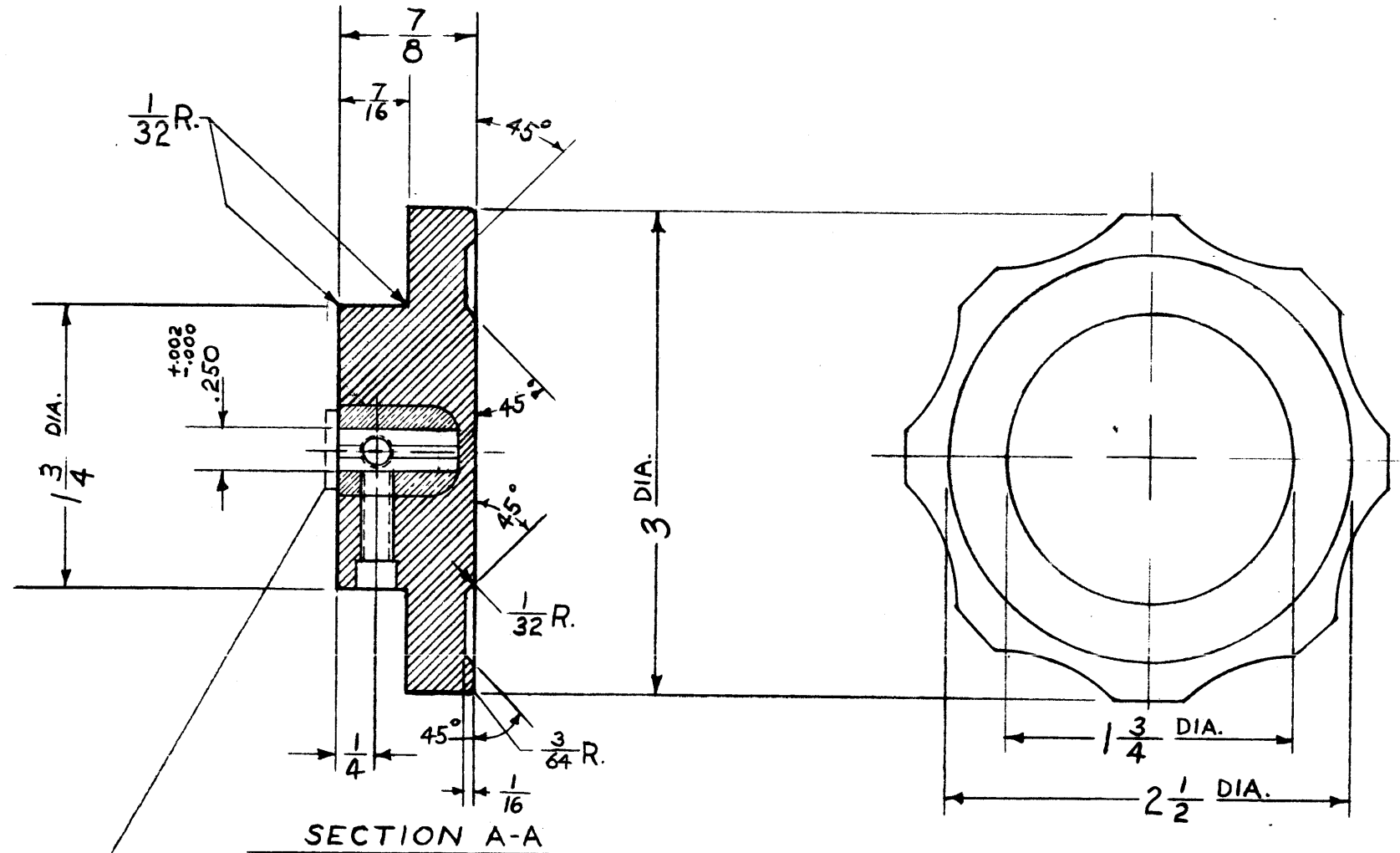
| | | | | |
|--------------------|-----------------|-----------------|--------|---|
| FINISH & SPEC. NO. | ELEC. DES. APP. | MECH. DES. APP. | MP-116 | Δ |
|--------------------|-----------------|-----------------|--------|---|

MP-115 C



A - #3 (213) DR. 3/16 DP.
 TAP DR. # 21 (159)
 #10-32 TAP 2 HOLES
 USE 40027 CD. SS.
 2 - 10/32 X DRILL THRU
 B - 8-32 TAP x 5/16 DEEP 5 Req.

MACHINE INSERT FLUSH WITH CASTING



SHRINKAGE .008 PER INCH

| | | | | | | | | |
|--------------------|------|--|---|---------|--------|---------|-----|------|
| C | 1 | 2" B" HOLES ADDED. ON HOLE LEGEND B" HOLE CLARIFIED | 1-30-63 | 8124 | G-D | | | |
| B | 1 | 1/4" SHAFT DIA + KEYWAY WERE DRILLED ALL THE WAY THRU. | 4/26/61 | 4773 | DM | | | |
| A | 3 | .250 DIA. HOLES WAS 5/8 DEEP | 8-19-60 | 27A | RU | | | |
| | 2 | 3" B" HOLES ADDED | | | | | | |
| | 1 | KEYWAY ADDED | | | | | | |
| ISSUE | ITEM | CHANGED FROM | DATE | CH. NO. | DRAFTS | CHECKER | ENG | APP. |
| TOLERANCES | | | SCALE: S-401- | | | | | |
| DEC. DIM. ± .005 | | | MAXIMUM ALLOWABLE TOLERANCES HAVE BEEN DETERMINED AND ANY DEVIATIONS WILL BE CAUSE FOR REJECTION. | | | | | |
| FRAC. DIM. ± 1/64 | | | REMOVE ALL BURRS AND SHARP ED ES | | | | | |
| AN ULAR DIM. ± 1/2 | | | | | | | | |

| | | | | |
|---------------|---------|-------------|------------|----------|
| REQ. PER UNIT | GPT-40K | PROJECT NO. | ASS'Y. NO. | DATE |
| | | | | 12-16-59 |
| USED ON | | | | |

| REQ. ITEM | PART NO. | DESCRIPTION | SYMBOL |
|-----------|----------|--|----------|
| | | THE TECHNICAL MATERIEL CORP. MAMARONECK. NEW YORK | |
| | | STOCK SIZE | |
| | | Molded PHENOLIC | |
| | | MATERIAL | |
| | | KNOB, 3" DIA. | |
| | | TYPE & TEMPER | |
| | | HEAT TREAT. SPEC. | |
| | | FINISH & SPEC. NO. | |
| | | ELEC. DES. APP. | |
| | | MECH. DES. APP. | |
| | | | MP-115 C |

MP117

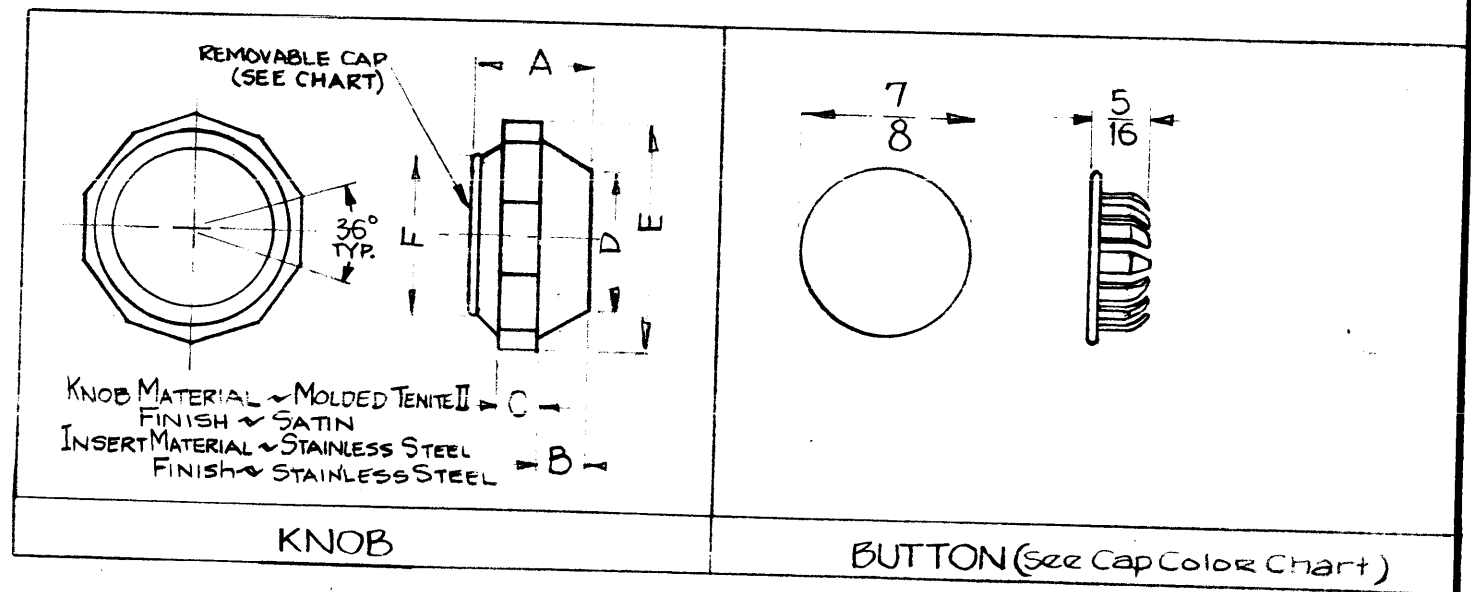
| TMC PARTNUMBER | CAT. NO | SHAFT SIZE | HOLE DEPTH FOR SHAFT | A | B | C | D | E | F |
|----------------|---------|------------|----------------------|-------|-------|------|-----|-------|-----|
| MP-117-1 | 3020 | 1/4 | 17/32 | 27/32 | 11/32 | 9/32 | 5/8 | 17/32 | 7/8 |

| COLORS | NICKEL PLATE | BLACK | WHITE | GRAY | RED | ORANGE | YELLOW | GREEN | BLUE | PURPLE |
|-----------|--------------|-------|-------|------|-----|--------|--------|-------|------|--------|
| MFR. CODE | 09 | 10 | 19 | 18 | 12 | 13 | 14 | 15 | 16 | 17 |
| TMC CODE | A | B | C | D | E | F | G | H | J | K |

NOTICE TO PERSONS RECEIVING THIS DRAWING

THE TECHNICAL MATERIEL CORPORATION claims proprietary right in the material disclosed hereon. This drawing is issued in confidence for engineering information only and may not be reproduced or used to manufacture anything shown hereon without permission from THE TECHNICAL MATERIEL CORPORATION to the user. This drawing is loaned for mutual assistance and is subject to recall at any time.

Property of:
THE TECHNICAL MATERIEL CORPORATION
 MAMARONECK, NEW YORK



NOMENCLATURE SHALL BE IN FOLLOWING FORM

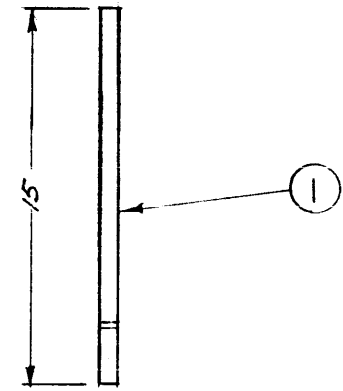
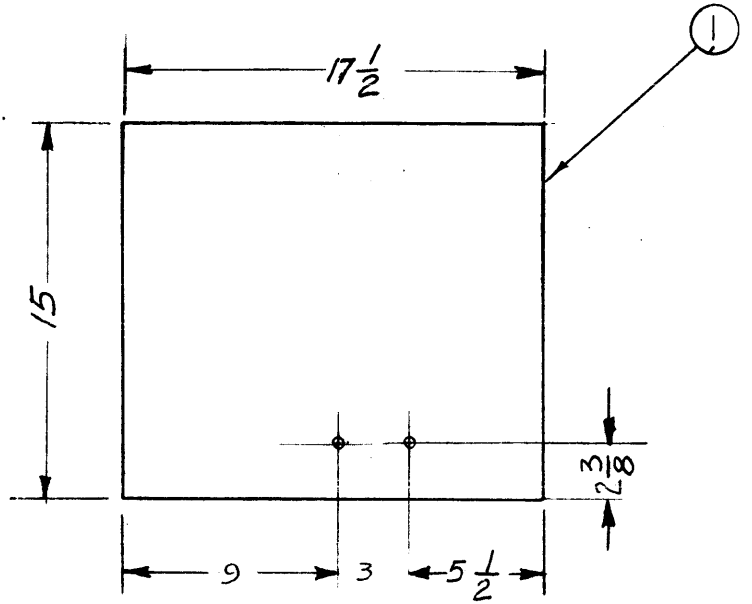
MP-117-1-A
 BASIC TMC NO CAP COLOR (SEE CHART)

| ISSUE | ITEM | CHANGED FROM | DATE | CH. NO. | DRAFTS | CHECKER | ENG. APP. |
|----------------|------|--------------|---|---------|--------|---------|-----------|
| | | | | | | | |
| TOLERANCES | | | SCALE: 5401-000 | | | | |
| DEC. DIM. ± | | | MAXIMUM ALLOWABLE TOLERANCES HAVE BEEN DETERMINED AND ANY DEVIATIONS WILL BE CAUSE FOR REJECTION. | | | | |
| FRAC. DIM. ± | | | REMOVE ALL BURRS AND SHARP EDGES | | | | |
| ANGULAR DIM. ± | | | | | | | |

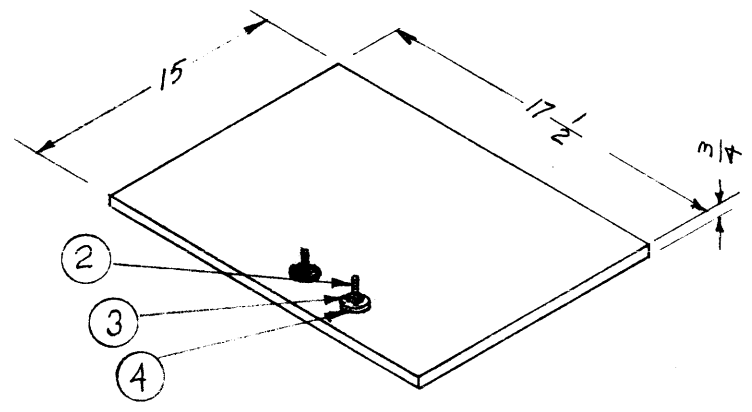
| | | | | |
|---------------|-------|-------------|------------|--------|
| REQ. PER UNIT | MODEL | PROJECT NO. | ASS'Y. NO. | DATE |
| | | | | 8-4-60 |

| REQ. ITEM | PART NO. | DESCRIPTION | SYMBOL |
|--------------------|-------------------|---|---------|
| STOCK SIZE | | THE TECHNICAL MATERIEL CORP. MAMARONECK, NEW YORK | |
| MATERIAL | | KNOB, INSTRUMENT (PLAIN TYPE) | |
| TYPE & TEMPER | HEAT TREAT. SPEC. | DRAWN | CHECKED |
| FINISH & SPEC. NO. | ELEC. DES. APP. | MECH. DES. APP. | MP-117 |

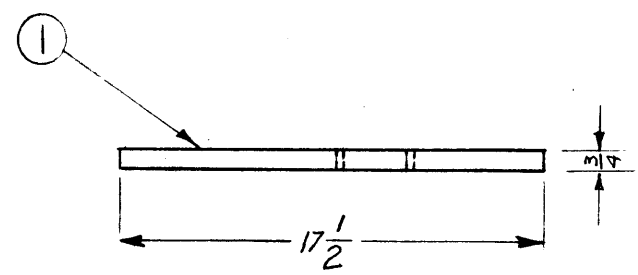
MP-118



END VIEW



ISOMETRIC OF... MP-118



SIDE VIEW

| | | | | |
|---|---|------------------------|--------------------|--|
| 2 | 4 | WH-101 | WASHER, FLAT STEEL | |
| 2 | 3 | NU-101 | NUT, SQUARE STEEL | |
| 2 | 2 | BL-101 | BOLT, CARRIAGE | |
| 1 | 1 | PLY- 17 1/2-15-3/4-F-A | PLYWOOD, FIRE | |

| REQ. ITEM | PART NO. | DESCRIPTION | SYMBOL |
|-----------|----------|--|---------|
| | | THE TECHNICAL MATERIEL CORP. MAMARONECK, NEW YORK | |
| | | MOUNTING PLATE | |
| | | MATERIAL | |
| | | DRAWN | CHECKER |
| | | FINAL APPROVAL | |
| | | MP-118 | |

| | | | | | | |
|-----|-------------|------|---------|--------|---------|-----------|
| SYM | DESCRIPTION | DATE | CH. NO. | DRAFTS | CHECKER | ENG. APP. |
|-----|-------------|------|---------|--------|---------|-----------|

UNLESS OTHERWISE SPECIFIED:
 DIMENSIONS ARE IN INCHES
 TOLERANCES ON
 FRACTIONS ± 1/64 DECIMALS ± .05 ANGLES ± 1/2°

SCALE:
 MAXIMUM ALLOWABLE TOLERANCES HAVE BEEN DETERMINED AND ANY DEVIATIONS WILL BE CAUSE FOR REJECTION.
 REMOVE ALL BURRS AND SHARP EDGES

| | | | | |
|---------------|-------|---------|------------|--------|
| 1 | TLI | | | 2-7-62 |
| REQ. PER UNIT | MODEL | SECTION | ASS'Y. NO. | DATE |
| USED ON | | | | |

MP-118

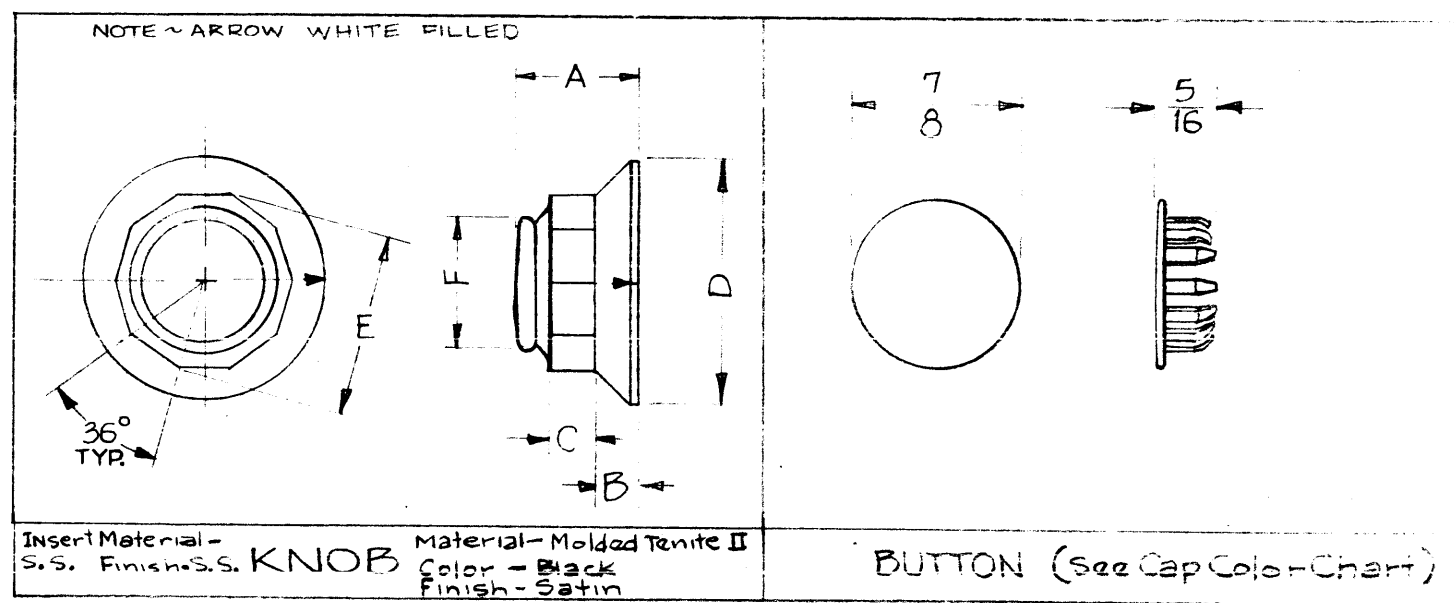
| TMC PART NO | CAT# SERIES | SHAFT SIZE | HOLE DEPTH FOR SHAFT | A | B | C | D | E | F | ARROW |
|-------------|-------------|------------|----------------------|-------|-------|------|-------|---------|-----|------------|
| MP-118-1 | 3021 | 1/4 | 17/32 | 21/32 | 11/32 | 9/32 | 1-5/8 | 1-11/32 | 1/8 | w/o Arrow |
| MP-118-2 | 3022 | 1/4 | 17/32 | 27/32 | 11/32 | 9/32 | 1-5/8 | 1-7/32 | 7/8 | With Arrow |

| CAP COLORS | | | | | | | | | | |
|------------|--------------|-------|-------|------|-----|--------|--------|-------|------|--------|
| COLORS | NICKEL PLATE | BLACK | WHITE | GRAY | RED | ORANGE | Yellow | Green | BLUE | PURPLE |
| MFG # | 09 | 10 | 19 | 18 | 12 | 13 | 14 | 15 | 16 | 17 |
| TMC CODE | A | B | C | D | E | F | G | H | J | K |

NOTICE TO PERSONS RECEIVING THIS DRAWING

THE TECHNICAL MATERIEL CORPORATION claims proprietary right in the material disclosed hereon. This drawing is issued in confidence for engineering information only and may not be reproduced or used to manufacture anything shown hereon without permission from THE TECHNICAL MATERIEL CORPORATION to the user. This drawing is loaned for mutual assistance and is subject to recall at any time.

Property of:
THE TECHNICAL MATERIEL CORPORATION
 MAMARONECK, NEW YORK



MP-118-1-B
 Basic TMC No. Cap Color (see Chart)

| ISSUE | ITEM | CHANGED FROM | DATE | CH. NO. | DRAFTS | CHECKER | ENG. APP. |
|----------------|------|--------------|--|---------|--------|---------|-----------|
| | | | | | | | |
| TOLERANCES | | | SCALE: 5/16" = 1" | | | | |
| DEC. DIM. ± | | | MAXIMUM ALLOWABLE TOLERANCES HAVE BEEN DETERMINED AND ANY DEVIATIONS WILL BE CAUSE FOR REJECTION. REMOVE ALL BURRS AND SHARP EDGES | | | | |
| FRAC. DIM. ± | | | | | | | |
| ANGULAR DIM. ± | | | | | | | |

| REQ. PER UNIT | MODEL | PROJECT NO. | ASS'Y. NO. | DATE |
|---------------|-------|-------------|------------|--------|
| | | | | 8-4-60 |
| USED ON | | | | |

| REQ. ITEM | PART NO. | DESCRIPTION | SYMBOL |
|--------------------|-------------------|---|-----------------|
| STOCK SIZE | | THE TECHNICAL MATERIEL CORP. MAMARONECK, NEW YORK | |
| MATERIAL | | KNOB, INSTRUMENT (SKIRT TYPE) | |
| TYPE & TEMPER | HEAT TREAT. SPEC. | DRAWN | CHECKED |
| FINISH & SPEC. NO. | | ELEC. DES. APP. | MECH. DES. APP. |
| | | MP-118 | |

| | | | |
|--------|--------------|-----------|-------------------|
| MP-121 | TMC PART NO. | MEGR. NO. | "A" HOLE |
| | MP-121-1 | | NONE |
| | MP-121-2 | | Drill & Tap 10-24 |

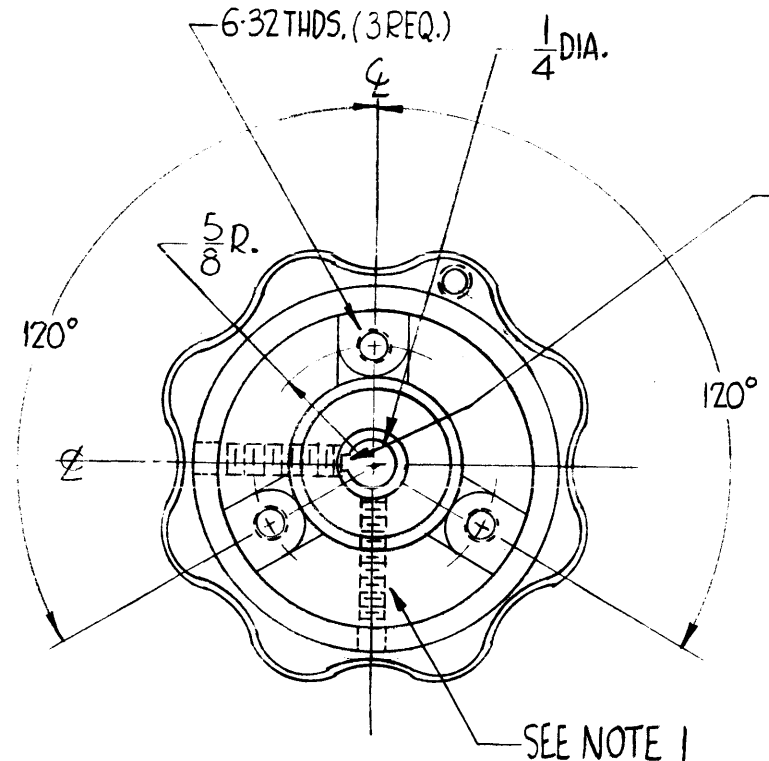
NOTES ~

- 1. MANUFACTURED TO SUPPLY :
(2) EACH 10-32 by 3/8 LG. ALLEN HEAD, CUP POINT SET SCREWS (INSTALLED).

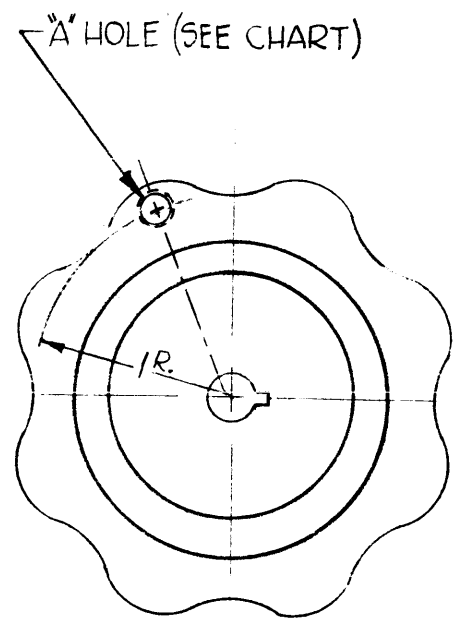
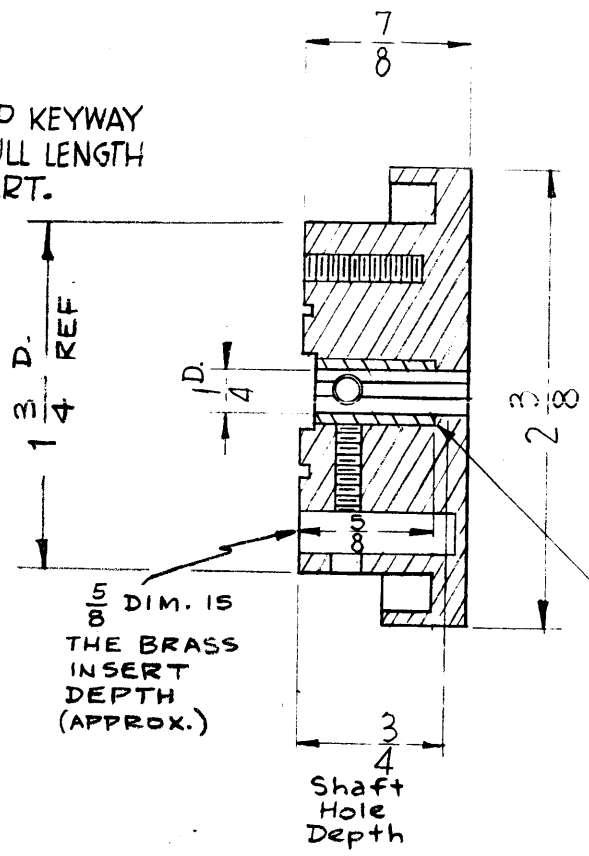
NOTICE TO PERSONS RECEIVING THIS DRAWING

THE TECHNICAL MATERIEL CORPORATION claims proprietary right in the material disclosed hereon. This drawing is issued in confidence for engineering information only and may not be reproduced or used to manufacture anything shown hereon without permission from THE TECHNICAL MATERIEL CORPORATION to the user. This drawing is loaned for mutual assistance and is subject to recall at any time.

Property of:
THE TECHNICAL MATERIEL CORPORATION
MAMARONECK, NEW YORK



1/16 WIDE BY 1/16 DEEP KEYWAY (Blind). KEYWAY FULL LENGTH OF BRASS INSERT.



BRASS INSERT

REF ~ MODIFIED MP-110

| SYM | DESCRIPTION | DATE | CH. NO. | DRAFTS | CHECKER | ENG. APP. |
|-----|------------------------------|---------|---------|--------|--------------------|--------------------|
| B | EXTENDED 1/4" HOLE THRU KNOB | 7-22-66 | 16621 | RME | <i>[Signature]</i> | <i>[Signature]</i> |
| A | KEYWAY RELOCATED | 2-19-62 | 6401 | G.S. | <i>[Signature]</i> | <i>[Signature]</i> |

UNLESS OTHERWISE SPECIFIED:
DIMENSIONS ARE IN INCHES
TOLERANCES ON FRACTIONS ± 1/64 DECIMALS ± .005 ANGLES ± 1/2°

SCALE: _____
MAXIMUM ALLOWABLE TOLERANCES HAVE BEEN DETERMINED AND ANY DEVIATIONS WILL BE CAUSE FOR REJECTION.
REMOVE ALL BURRS AND SHARP EDGES

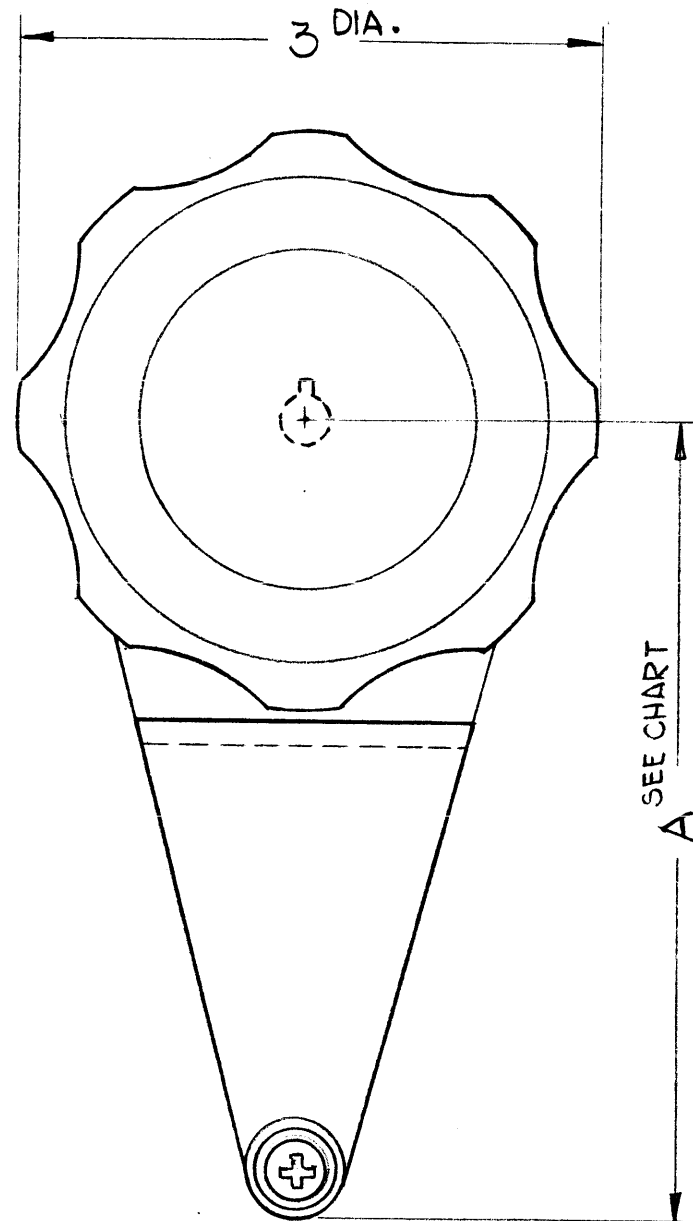
| | | | | | |
|---------------|-------|---------|------------|------|---------|
| 2 | ACU | | | | 4-24-61 |
| REQ. PER UNIT | MODEL | SECTION | ASS'Y. NO. | DATE | |
| USED ON | | | | | |

| REQ. ITEM | PART NO. | DESCRIPTION | SYMBOL |
|--|-------------------|--------------------|--------------------|
| THE TECHNICAL MATERIEL CORP. MAMARONECK, NEW YORK | | | |
| STOCK SIZE | | | |
| KNOB, FLUTED, KEYWAYED | | | |
| MATERIAL | | | |
| TYPE & TEMPER | HEAT TREAT. SPEC. | DRAWN | CHECKER |
| | | <i>[Signature]</i> | <i>[Signature]</i> |
| FINISH & SPEC. NO. | | ELEC. DES. APP. | MECH. DES. APP. |
| | | | |
| MP-121 | | | B |

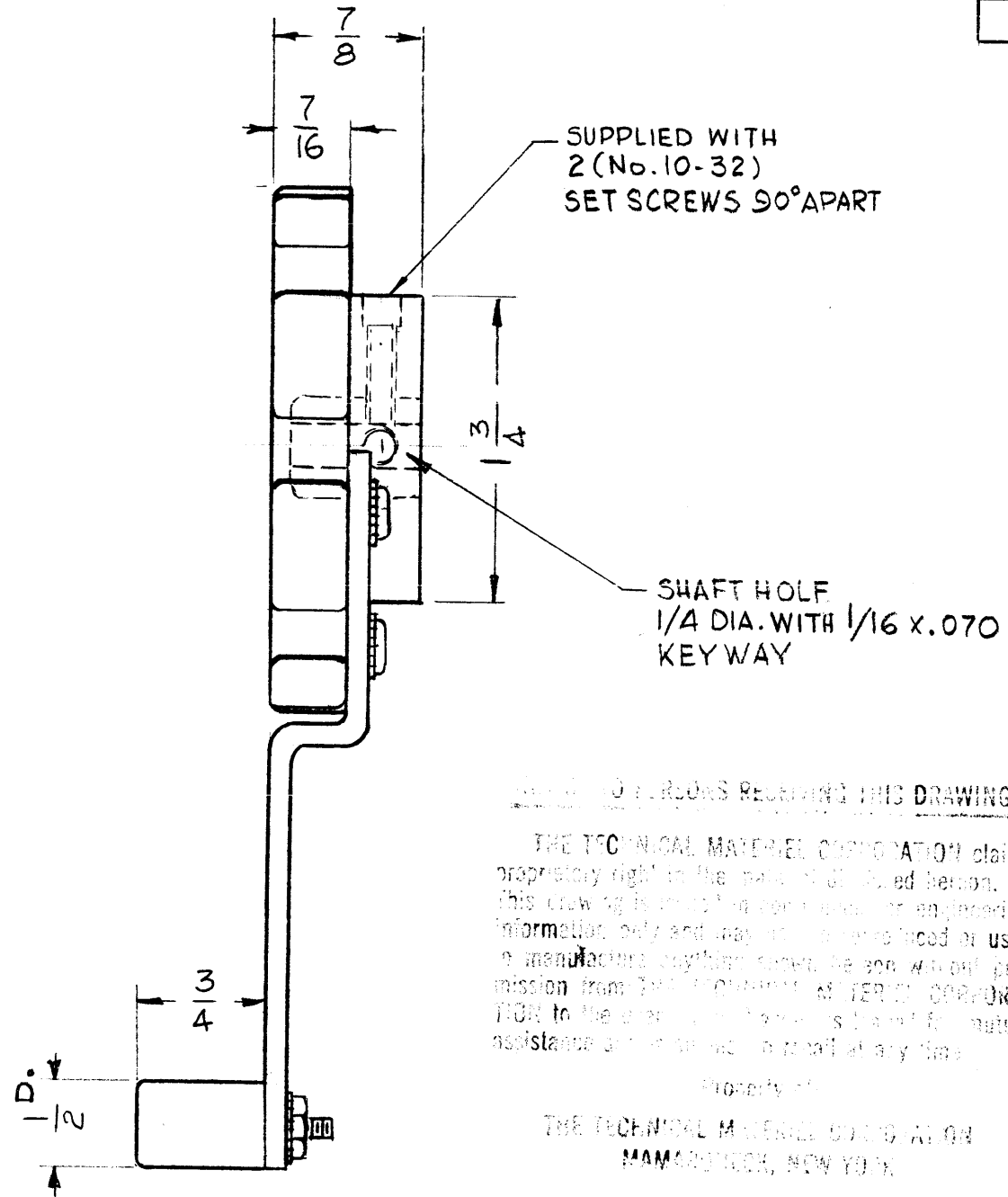
THE CONTENTS OF THIS DRAWING ARE THE EXCLUSIVE PROPERTY OF THE TECHNICAL MATERIEL CORP. ITS UNAUTHORIZED USE OR REPRODUCTION IN WHOLE OR IN PART IS STRICTLY FORBIDDEN.

MP-124

| TMC PART No | DIM. "A" |
|-------------|----------|
| MP-124-1 | 2 7/8 |
| MP-124-2 | 4 1/8 |



SEE CHART
A



NOTICE TO PERSONS RECEIVING THIS DRAWING

THE TECHNICAL MATERIEL CORPORATION claims proprietary right in the design of the herein shown. This drawing is made for your use for engineering information only and may not be reproduced or used in manufacture without the express written permission from THE TECHNICAL MATERIEL CORPORATION. The user of this drawing is liable for mutual assistance and information at any time.

Property of
THE TECHNICAL MATERIEL CORPORATION
MAMARONECK, NEW YORK

| REQ. | ITEM | PART NO. | BUDETTI | DESCRIPTION | SYMBOL |
|------|------|----------|--|-----------------|-----------------|
| | | | THE TECHNICAL MATERIEL CORP. MAMARONECK, NEW YORK | | |
| | | | KNOB, CRANK TYPE | | |
| | | | MATERIAL | | |
| | | | GDL | | |
| | | | DRAWN | CHECKED | FINAL APPROVAL |
| | | | | | MP-124 |
| | | | FINISH & SPEC. NO. | ELEC. DES. APP. | MECH. DES. APP. |

| SYM | DESCRIPTION | DATE | CH. NO. | DRAFTS | CHECKER | ENG. APP. |
|--|-------------|---|---------|--------|---------|-----------|
| UNLESS OTHERWISE SPECIFIED: | | SCALE: 2A-2265 | | | | |
| DIMENSIONS ARE IN INCHES | | MAXIMUM ALLOWABLE TOLERANCES HAVE BEEN DETERMINED AND ANY DEVIATIONS WILL BE CAUSE FOR REJECTION. | | | | |
| TOLERANCES ON FRACTIONS ± 1/64 DECIMALS ± .005 ANGLES ± 1/2° | | REMOVE ALL BURRS AND SHARP EDGES | | | | |

| REQ. PER UNIT | MODEL | SECTION | ASS'Y. NO. | DATE |
|---------------|---------|---------|------------|---------|
| | GPT-40K | AX-275 | | 1-17-63 |
| USED ON | | | | |

| TMC PART NO. | MFG PART NO. | DIMENSIONS | | | | | ENGRAVING | S |
|--------------|-------------------|------------|------|-------|-------|------|---------------------|------|
| | | A | B | C | G | H | | |
| MP-125-1 | S-230-64-BB-605-L | 3/4 | 9/16 | 13/32 | 15/64 | 3/16 | SEE LETT. NOTE B-32 | B-32 |
| MP-125-2 | S-230-64-BB-L | 3/4 | 9/16 | 13/32 | 15/64 | 1/4 | SEE LETT. NOTE B-32 | B-32 |

MP-125

FOR ALL PERSONS RECEIVING THIS DRAWING

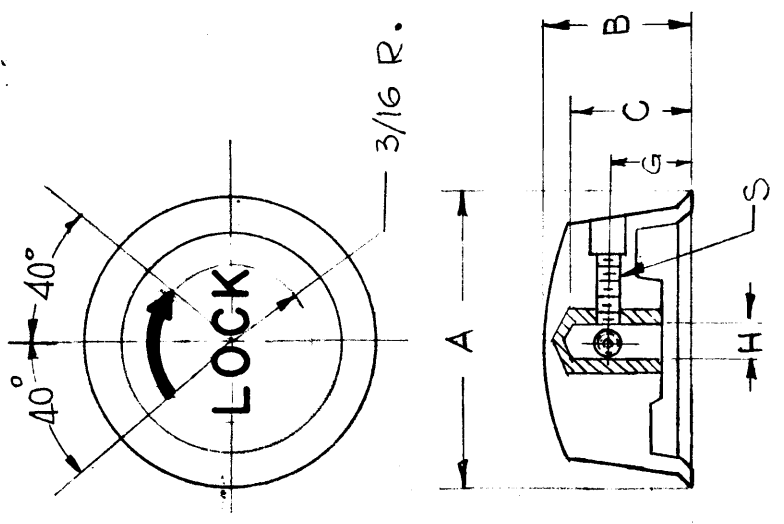
THE TECHNICAL MATERIEL CORPORATION claims proprietary right in the material disclosed herein. This drawing is issued in confidence for engineering information only and may not be reproduced or used to manufacture anything shown hereon without permission from THE TECHNICAL MATERIEL CORPORATION to the user. This drawing is loaned for mutual assistance and is subject to recall at any time.

Property of:

THE TECHNICAL MATERIEL CORPORATION
MAMARONECK, NEW YORK

REVISIONS

| SYM | DESCRIPTION | DATE | E.M.N. NO. | DRAFT | CHKD | APPD |
|-----|--|----------|------------|-------|------|------|
| A | MP-125-2 ADDED; ON MP-125-1 "H" WAS 1/4; 2 HOLES RELOCATED | 11-15-62 | 7645 | 247 | JW | WJ |



LETTERING NOTE

WHITE FILLED
 LETTERING-3/32 GOTHIC
 LINE - .010 DEPTH .015 WIDTH
 ARROWHEAD-.010 DEPTH

REF: KURZ-KASCH, INC. STANDARD KNOBS

| REQ'D. ITEM | PART NUMBER | DESCRIPTION | SYMBOL |
|---|-------------|------------------|-----------|
| KRUY | | LIST OF MATERIAL | |
| MATERIAL | | | |
| FINISH | | | |
| TITLE | | | |
| THE TECHNICAL MATERIEL CORP. MAMARONECK, NEW YORK | | | |
| KNOB, INSTRUMENT | | | |
| DRAWN | G.D.L | DATE | 6-28-62 |
| CHECKED | | DATE | 6-28-62 |
| ELECT. DES. | | DATE | |
| MECH. DES. | | DATE | |
| UNLESS OTHERWISE SPECIFIED DIMENSIONS ARE IN INCHES AND INCLUDE CHEMICALLY APPLIED OR PLATED FINISHES | | FINAL APPROVAL | DATE |
| DECIMALS .X ± .05 .XX ± .01 .XXX ± .005 | | MP-125 | A |
| FRACTIONS ± 1/64 ANGLES ± 0° 30' | | | |
| TOLERANCES | | SHEET | REV. LTR. |

NOTES

THE CONTENTS OF THIS DRAWING ARE THE EXCLUSIVE PROPERTY OF THE TECHNICAL MATERIEL CORP. ITS UNAUTHORIZED USE OR REPRODUCTION IN WHOLE OR IN PART IS STRICTLY FORBIDDEN.