

IF IT IS FOUND DESIRABLE TO CHANGE ANY TOLERANCE OR OTHER DETAIL SPECIFIED ON THIS DRAWING NOTIFY THE PURCHASER PROMPTLY.

MS-10307 A

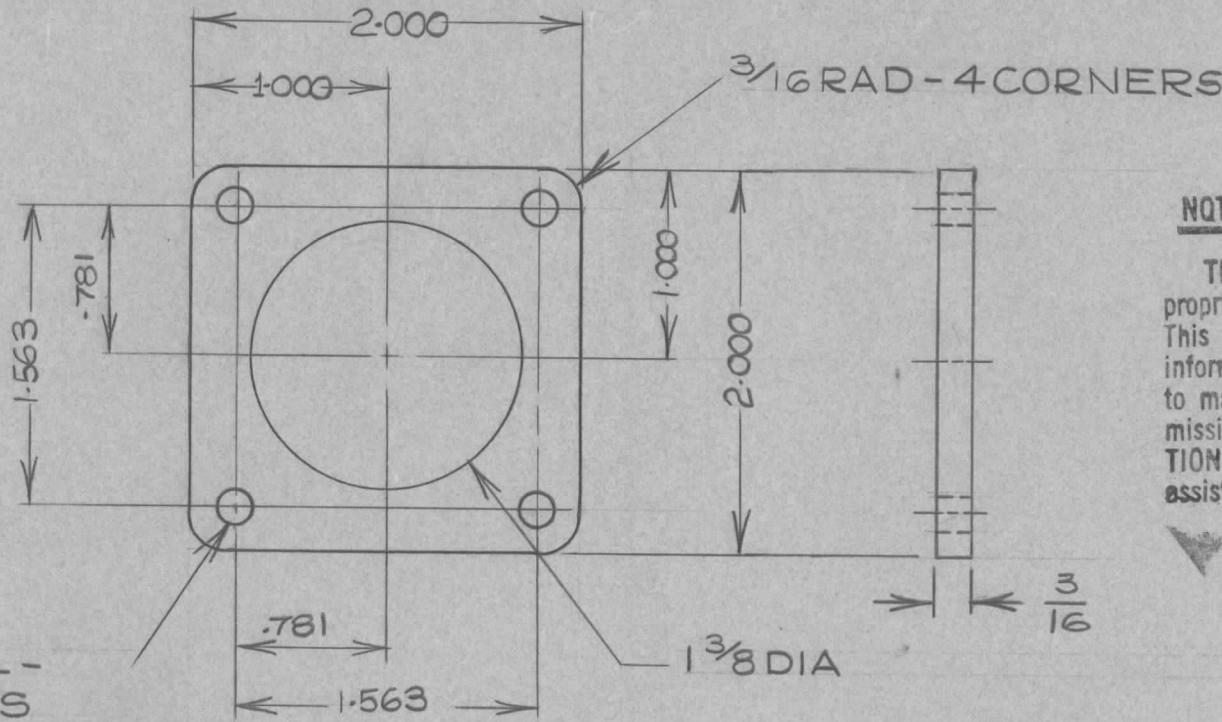
MAXIMUM ALLOWABLE TOLERANCES HAVE BEEN DETERMINED AND DEVIATIONS WILL BE CAUSE FOR REJECTION. REMOVE ALL BURRS AND SHARP EDGES

USED ON

MODEL	PROJECT NO.	ASS'Y. NO.	DATE
-------	-------------	------------	------

10 POS. XTAL OVEN

A10211 MAR 20/59



#10 DRILL - 4 HOLES

NOTICE TO PERSONS RECEIVING THIS DRAWING

THE TECHNICAL MATERIEL CORPORATION claims proprietary right in the material disclosed herein. This drawing is issued in confidence for engineering information only and may not be reproduced or used to manufacture anything shown hereon without permission from THE TECHNICAL MATERIEL CORPORATION to the user. This drawing is loaned for mutual assistance and is subject to recall at any time.

Property of:

THE TECHNICAL MATERIEL CORPORATION
MAMARONECK, NEW YORK

1	1		SPACER	
REQ.	ITEM	PART NO.	DESCRIPTION	SYMBOL
			SQ. BAR	
			STOCK SIZE	
			ALUM	
			MATERIAL	WEIGHT PER PC.
			CONNECTOR SPACER	
			10 POSITION XTAL OVEN	
			DCM	
			DRAWN	ELEC. DES. APP. MECH. DES. APP.
			HEAT TREAT. SPEC.	
			ETCH & IRIDITE	
			FINISH & SPEC. NO.	
				MS10307 A

A	ADDED R. END.	27/5 1960	JC	<i>fleh</i>
ISSUE	ITEM	CHANGED FROM	DATE	CN. NO. DRAFTS CHECKER ENG. APP.
TOLERANCES		SCALE 1:1		
ALL OTHERS	DEC. DIM. ± .005 FRAC. DIM. ± 1/64 ANGULAR DIM. ± -	DRILL, PUNCH, COMMERCIAL STOCK SIZES AND MANUFACTURERS TOLERANCES ARE NOT INCLUDED.		

IF IT IS FOUND DESIRABLE TO CHANGE ANY TOLERANCE OR OTHER DETAIL SPECIFIED ON THIS DRAWING NOTIFY THE PURCHASER PROMPTLY.

MS10317 B

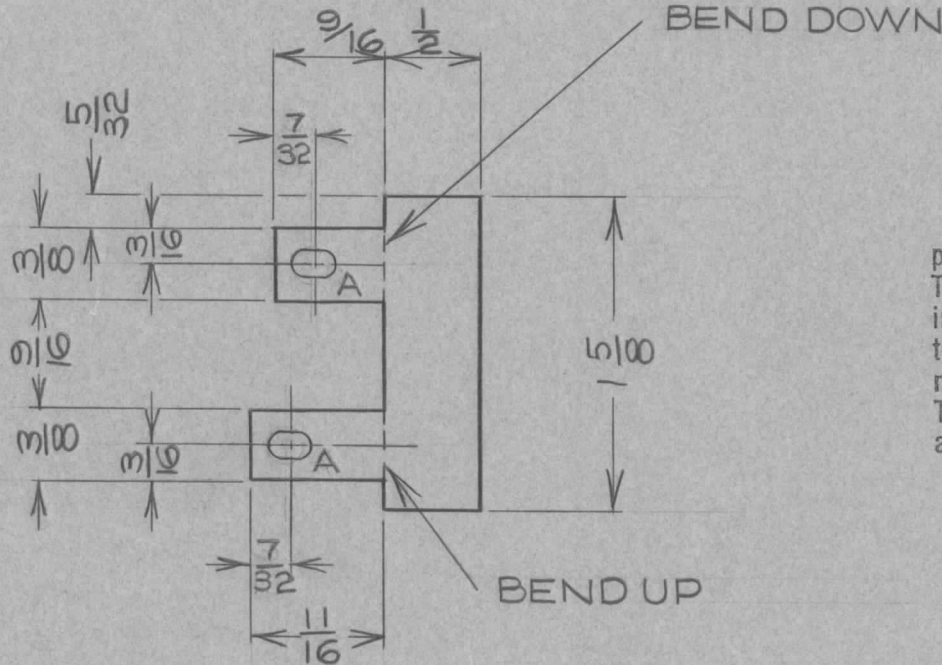
MAXIMUM ALLOWABLE TOLERANCES HAVE BEEN DETERMINED AND DEVIATIONS WILL BE CAUSE FOR REJECTION. REMOVE ALL BURRS AND SHARP EDGES

USED ON

MODEL	PROJECT NO.	ASS'Y. NO.	DATE
-------	-------------	------------	------

AMC6-5 CEG46
DA101 CE5107

MAY 22
1959



NOTICE TO PERSONS RECEIVING THIS DRAWING

THE TECHNICAL MATERIEL CORPORATION claims proprietary right in the material disclosed hereon. This drawing is issued in confidence for engineering information only and may not be reproduced or used to manufacture anything shown hereon without permission from THE TECHNICAL MATERIEL CORPORATION to the user. This drawing is loaned for mutual assistance and is subject to recall at any time.

Property of:

THE TECHNICAL MATERIEL CORPORATION
MAMARONECK, NEW YORK

HOLE A- SLOT-9/64X9/32

REQ.	ITEM	PART NO.	DESCRIPTION	SYMBOL
			TMC (Canada) LIMITED OTTAWA ONTARIO	
			SHIELD (PRE-AMP.)	
			DCM	<i>H. W.</i>
			DRAWN	ELEC. DES. APP. MECH. DES. APP.
			CHECKED	FINAL APPROVAL
			MS10317	B

B	Spec. S245 Was Silver Plate	Sept 24/62	—	JPC	<i>W. W.</i>	<i>M. W.</i>	
A	DA101 ADDED	4/60	—	JPC	<i>W. W.</i>	<i>M. W.</i>	
ISSUE	ITEM	CHANGED FROM	DATE	CN. NO.	DRAFTS	CHECKER	ENG. APP.

TOLERANCES

SCALE 1:1

ALL OTHERS

DEC. DIM. ± —
FRAC. DIM. ± 1/64
ANGULAR DIM. ± —

DRILL, PUNCH, COMMERCIAL STOCK SIZES AND MANUFACTURERS TOLERANCES ARE NOT INCLUDED.

IF IT IS FOUND DESIRABLE TO CHANGE ANY TOLERANCE OR OTHER DETAIL SPECIFIED ON THIS DRAWING NOTIFY THE PURCHASER PROMPTLY.

STANDARD DRAWING

MS10321 B

MAXIMUM ALLOWABLE TOLERANCES HAVE BEEN DETERMINED AND DEVIATIONS WILL BE CAUSE FOR REJECTION. REMOVE ALL BURRS AND SHARP EDGES

USED ON

MODEL

PROJECT NO.

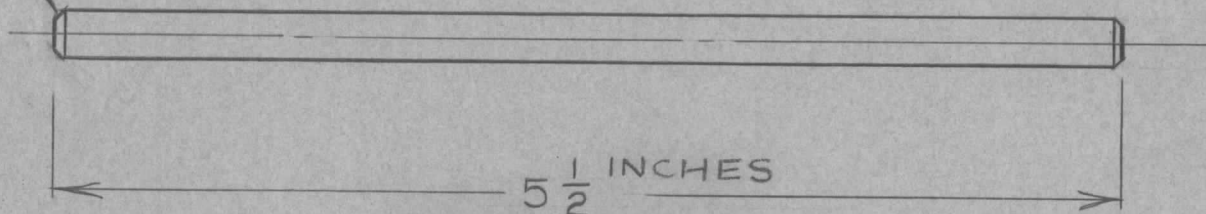
ASS'Y. NO.

DATE

AMC6-5 CE646

MAY6/59

CHAMFER 1/16" X 45°
BOTH ENDS.



NOTICE TO PERSONS RECEIVING THIS DRAWING

THE TECHNICAL MATERIEL CORPORATION claims proprietary right in the material disclosed hereon. This drawing is issued in confidence for engineering information only and may not be reproduced or used to manufacture anything shown hereon without permission from THE TECHNICAL MATERIEL CORPORATION to the user. This drawing is loaned for mutual assistance and is subject to recall at any time.

Property of:

THE TECHNICAL MATERIEL CORPORATION
MAMARONECK, NEW YORK

SUPERSEDED

DIRECTLY REPLACED BY PM-691-RF 5.50B

3-26-63 EMN 8660 RC

REQ.	ITEM	PART NO.	DESCRIPTION	SYMBOL
		1/4 O.D. ROD	TMC (Canada) LIMITED OTTAWA ONTARIO	
		STOCK SIZE		
		BRASS	FILTER SWITCH SHAFT	
		MATERIAL	EXTENSION	
		WEIGHT PER PC.	DCM	
		TYPE & TEMPER	DRAWN	MECH. DES. APP.
		HEAT TREAT. SPEC.	ELEC. DES. APP.	
		FINISH & SPEC. NO.	CHECKED	FINAL APPROVAL
				MS10321 B

B:	2	FINISH WAS BRIGHT NICKEL	326-63	8660	RC	JW	JWB
	1	REPLACED BY PM-691-RF 5.50B					
A		CHAMFER ADDED	11/23	-	DM		h.k.
ISSUE	ITEM	CHANGED FROM	DATE	CN. NO.	DRAFTS	CHECKER	ENG. APP.

TOLERANCES

SCALE 1:1

ALL OTHERS

DEC. DIM. ±
FRAC. DIM. ± 1/64
ANGULAR DIM. ±

DRILL, PUNCH, COMMERCIAL STOCK
SIZES AND MANUFACTURERS
TOLERANCES ARE NOT INCLUDED.

IF IT IS FOUND DESIRABLE TO CHANGE ANY TOLERANCE OR OTHER DETAIL SPECIFIED ON THIS DRAWING NOTIFY THE PURCHASER PROMPTLY.

MS-10 322

MAXIMUM ALLOWABLE TOLERANCES HAVE BEEN DETERMINED AND DEVIATIONS WILL BE CAUSE FOR REJECTION. REMOVE ALL BURRS AND SHARP EDGES

USED ON

MODEL

PROJECT NO.

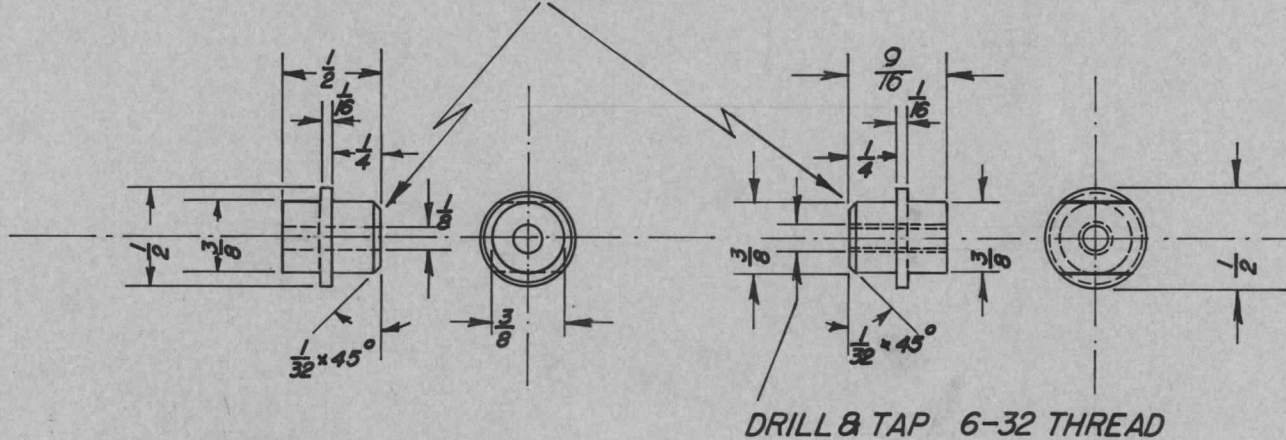
ASS'Y. NO.

DATE

GPT 750

A-10218 May 15/59

TO BE FITTED INTO
PHENOLIC TUBE DWG.
PX-10 002



NOTICE TO PERSONS RECEIVING THIS DRAWING

THE TECHNICAL MATERIEL CORPORATION claims proprietary right in the material disclosed hereon. This drawing is issued in confidence for engineering information only and may not be reproduced or used to manufacture anything shown hereon without permission from THE TECHNICAL MATERIEL CORPORATION to the user. This drawing is loaned for mutual assistance and is subject to recall at any time.

Property of:

THE TECHNICAL MATERIEL CORPORATION
MAMARONECK, NEW YORK

REQ.	ITEM	PART NO.	DESCRIPTION	SYMBOL
	1/2 DIA		TMC (Canada) LIMITED OTTAWA ONTARIO	
	STOCK SIZE			
	BRASS		CAP FOR GROUNDING	
	MATERIAL	WEIGHT PER PC.	HOOK GPT 750	
	TYPE & TEMPER		<i>M. B. Lewis</i> <i>U. Kr.</i> <i>U. Kr.</i>	
	HEAT TREAT. SPEC.		DRAWN ELEC. DES. APP MECH. DES. APP.	
	BRIGHT NICKEL		<i>W. C. M.</i> <i>J. She</i>	
	FINISH & SPEC. NO.		CHECKED FINAL APPROVAL	
			MS-10 322	

ISSUE	ITEM	CHANGED FROM	DATE	CN. NO.	DRAFTS	CHECKER	ENG. APP.
TOLERANCES			SCALE 1:1				
ALL OTHERS	DEC. DIM. ± FRAC. DIM. ± 1/64 ANGULAR DIM. ±		DRILL, PUNCH, COMMERCIAL STOCK SIZES AND MANUFACTURERS TOLERANCES ARE NOT INCLUDED.				

IF IT IS FOUND DESIRABLE TO CHANGE ANY TOLERANCE OR OTHER DETAIL SPECIFIED ON THIS DRAWING NOTIFY THE PURCHASER PROMPTLY.

MS10323

MAXIMUM ALLOWABLE TOLERANCES HAVE BEEN DETERMINED AND DEVIATIONS WILL BE CAUSE FOR REJECTION. REMOVE ALL BURRS AND SHARP EDGES

USED ON

MODEL

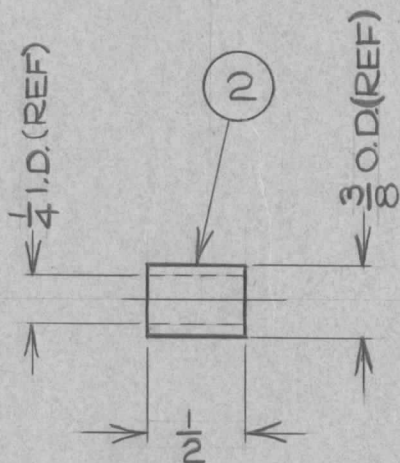
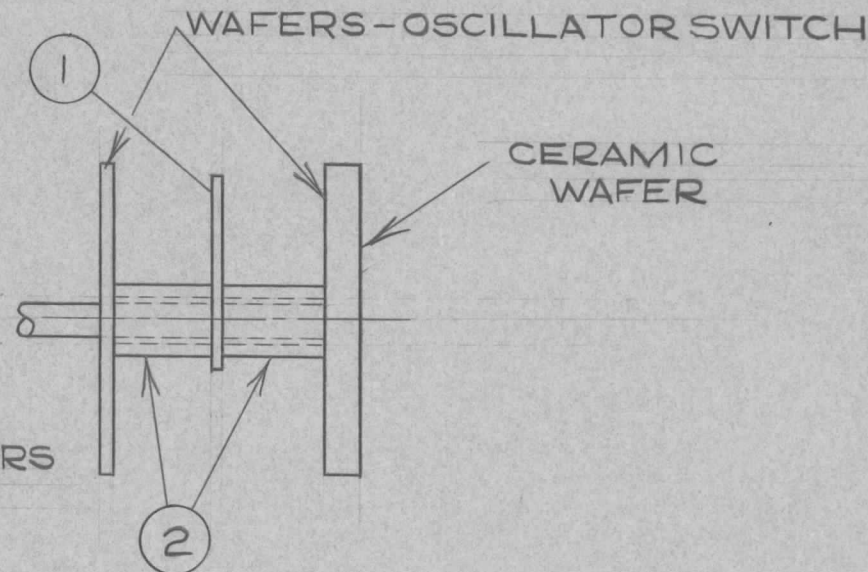
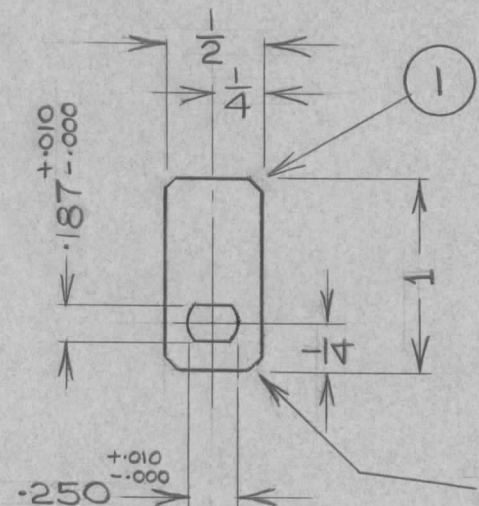
PROJECT NO.

ASS'Y. NO.

DATE

GPT 750 CE 667

APR 30/59



CHAMFER CORNERS
1/16 X 45°

2	2		SPACER
1	1		STOP
REQ.	ITEM	PART NO.	DESCRIPTION
			SYMBOL
IT1-14 GA.		TMC (Canada) LIMITED OTTAWA ONTARIO	
IT2-3/8 O.D X 1/4 I.D TUBING			
STOCK SIZE		OSCILLATOR SWITCH STOP	
MATERIAL		DETAILS	
WEIGHT PER PC.		DCM	
TYPE & TEMPER		DRAWN	
HEAT TREAT. SPEC.		ELEC. DES. APP.	
IT1-ETCH & IRIDITE		MECH. DES. APP.	
IT2-NIL		CHECKED	
FINISH & SPEC. NO.		FINAL APPROVAL	

ISSUE ITEM CHANGED FROM DATE CN. NO. DRAFTS CHECKER ENG. APP.

TOLERANCES

SCALE 1:1

ALL OTHERS

DEC. DIM. ±
FRAC. DIM. ± 1/64
ANGULAR DIM. ±

DRILL, PUNCH, COMMERCIAL STOCK SIZES AND MANUFACTURERS TOLERANCES ARE NOT INCLUDED.

MS10323

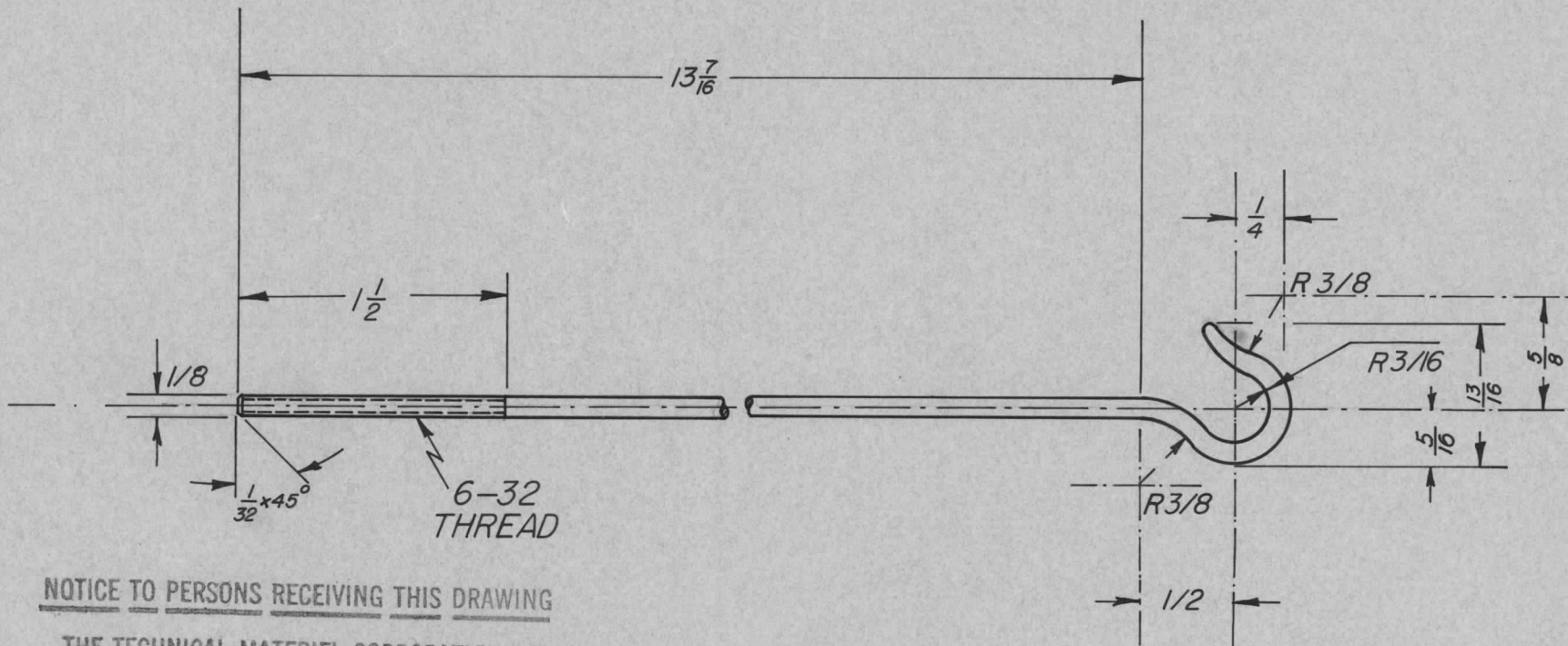
IF IT IS FOUND DESIRABLE TO CHANGE ANY TOLERANCE OR OTHER DETAIL SPECIFIED ON THIS DRAWING NOTIFY THE PURCHASER PROMPTLY.

MS-10 326

MAXIMUM ALLOWABLE TOLERANCES HAVE BEEN DETERMINED AND DEVIATIONS WILL BE CAUSE FOR REJECTION. REMOVE ALL BURRS AND SHARP EDGES

USED ON

MODEL	PROJECT NO.	ASS'Y. NO.	DATE
GPT 750		A-10 218	May 15/59



NOTICE TO PERSONS RECEIVING THIS DRAWING

THE TECHNICAL MATERIEL CORPORATION claims proprietary right in the material disclosed hereon. This drawing is issued in confidence for engineering information only and may not be reproduced or used to manufacture anything shown hereon without permission from THE TECHNICAL MATERIEL CORPORATION to the user. This drawing is loaned for mutual assistance and is subject to recall at any time.

Property of:

THE TECHNICAL MATERIEL CORPORATION
MAMARONECK, NEW YORK

REQ.	ITEM	PART NO.	DESCRIPTION	SYMBOL
	1/8 DIA		TMC (Canada) LIMITED OTTAWA ONTARIO	
	STOCK SIZE			
	BRASS		HOOK.	
	MATERIAL	WEIGHT PER PC.	PART OF GROUNDING HOOK FOR GPT 750	
	TYPE & TEMPER			
	HEAT TREAT. SPEC.		<i>H. Baker</i> DRAWN	<i>U. Kr.</i> ELEC. DES. APP.
	BRIGHT NICKEL		<i>L.C.M.</i> CHECKED	<i>U. Kr.</i> MECH. DES. APP.
	FINISH & SPEC. NO.			<i>She</i> FINAL APPROVAL
				MS-10 326

ISSUE	ITEM	CHANGED FROM	DATE	CN. NO.	DRAFTS	CHECKER	ENG. APP.
TOLERANCES			SCALE 1:1				
ALL OTHERS	DEC. DIM. ± FRAC. DIM. ± 1/64 ANGULAR DIM. ±		DRILL, PUNCH, COMMERCIAL STOCK SIZES AND MANUFACTURERS TOLERANCES ARE NOT INCLUDED.				

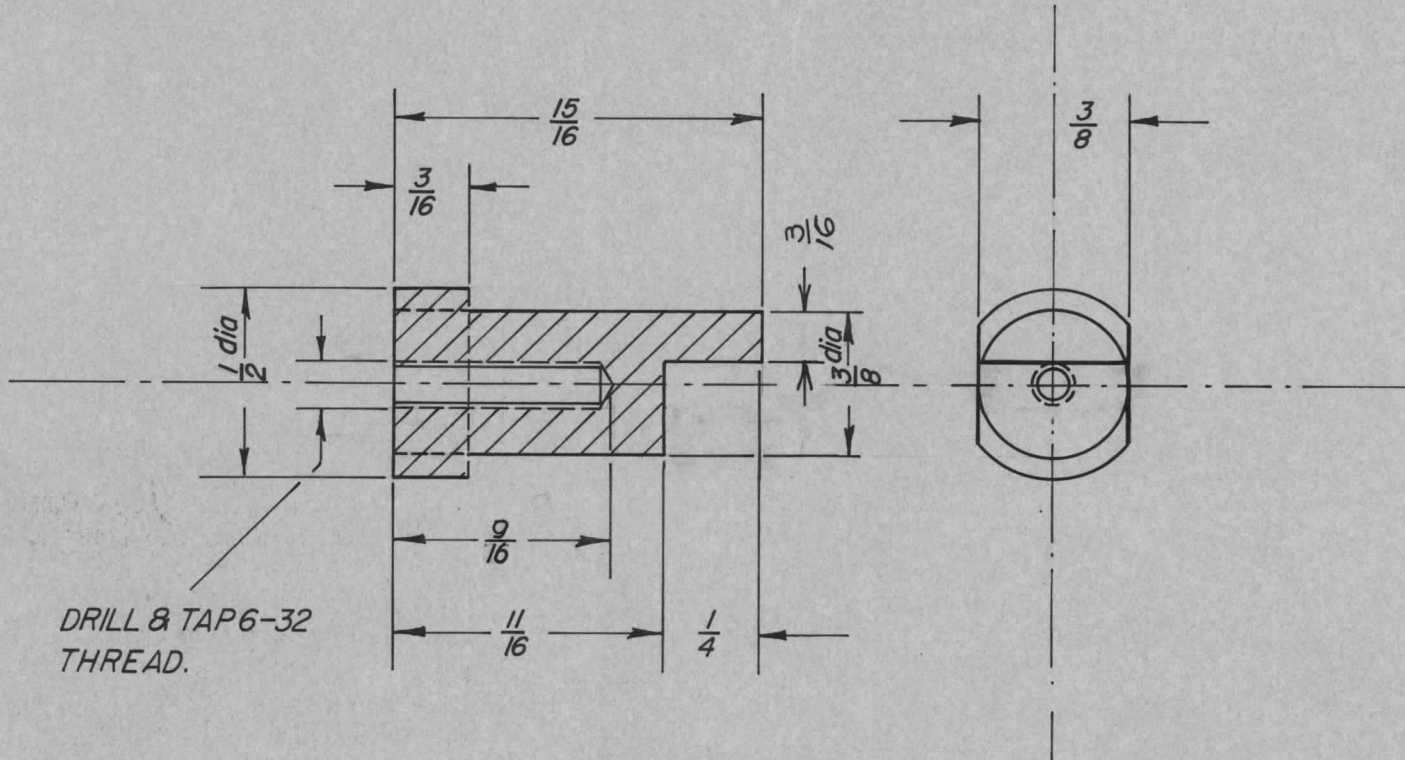
IF IT IS FOUND DESIRABLE TO CHANGE ANY TOLERANCE OR OTHER DETAIL SPECIFIED ON THIS DRAWING NOTIFY THE PURCHASER PROMPTLY.

MS-10327

MAXIMUM ALLOWABLE TOLERANCES HAVE BEEN DETERMINED AND DEVIATIONS WILL BE CAUSE FOR REJECTION. REMOVE ALL BURRS AND SHARP EDGES

USED ON

MODEL	PROJECT NO.	ASS'Y. NO.	DATE
GPT 750		A-10218	May 15/59



DRILL & TAP 6-32
THREAD.

REQ.	ITEM	PART NO.	DESCRIPTION	SYMBOL
	1/2 DIA		TMC (Canada) LIMITED OTTAWA ONTARIO	
	STOCK SIZE			
	BRASS		TERMINAL	
	MATERIAL	WEIGHT PER PC.	GROUNDING HOOK GPT 750	
	TYPE & TEMPER		<i>M. Puler</i> <i>M. Ver.</i> <i>M. Ver.</i>	
	HEAT TREAT. SPEC.		DRAWN ELEC. DES. APP. MECH. DES. APP.	
	BRIGHT NICKEL		<i>WCM</i> <i>Jue</i>	
	FINISH & SPEC. NO.		CHECKED FINAL APPROVAL	
			MS-10327	

ISSUE	ITEM	CHANGED FROM	DATE	CN. NO.	DRAFTS	CHECKER	ENG. APP.
ALL OTHERS		DEC. DIM. ± FRAC. DIM. ± 1/64 ANGULAR DIM. ±					
TOLERANCES			SCALE 2:1				
			DRILL, PUNCH, COMMERCIAL STOCK SIZES AND MANUFACTURERS TOLERANCES ARE NOT INCLUDED.				

IF IT IS FOUND DESIRABLE TO CHANGE ANY TOLERANCE OR OTHER DETAIL SPECIFIED ON THIS DRAWING NOTIFY THE PURCHASER PROMPTLY.

MS-10 328

MAXIMUM ALLOWABLE TOLERANCES HAVE BEEN DETERMINED AND DEVIATIONS WILL BE CAUSE FOR REJECTION. REMOVE ALL BURRS AND SHARP EDGES

STANDARD

USED ON

MODEL

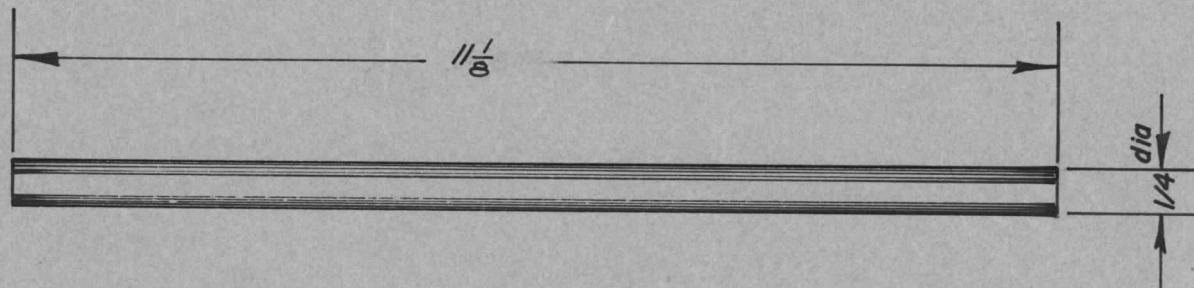
PROJECT NO.

ASS'Y. NO.

DATE

GPT-750

22. May 59



NOTICE TO PERSONS RECEIVING THIS DRAWING

THE TECHNICAL MATERIEL CORPORATION claims proprietary right in the material disclosed hereon. This drawing is issued in confidence for engineering information only and may not be reproduced or used to manufacture anything shown hereon without permission from THE TECHNICAL MATERIEL CORPORATION to the user. This drawing is loaned for mutual assistance and is subject to recall at any time.

Property of:

THE TECHNICAL MATERIEL CORPORATION
MAMARONECK, NEW YORK

REQ.	ITEM	PART NO.	DESCRIPTION	SYMBOL
		11-1/8x1/4dia	TMC (Canada) LIMITED OTTAWA ONTARIO	
		STOCK SIZE		
		ALUMINUM	SWITCH SHAFT EXTENSION	
		MATERIAL	GPT-750 (RTF-2)	
		WEIGHT PER PC.		
		TYPE & TEMPER	<i>[Signature]</i> DRAWN	<i>[Signature]</i> MECH. DES. APP.
			ELEC. DES. APP.	
		HEAT TREAT. SPEC.	<i>[Signature]</i> CHECKED	<i>[Signature]</i> FINAL APPROVAL
		ETCH AND IRIDITE		MS-10328
		FINISH & SPEC. NO.		

ISSUE	ITEM	CHANGED FROM	DATE	CN. NO.	DRAFTS	CHECKER	ENG. APP.
TOLERANCES			SCALE <i>N.T.S.</i>				
ALL OTHERS	DEC. DIM. \pm FRAC. DIM. \pm <i>1/64</i> ANGULAR DIM. \pm		DRILL, PUNCH, COMMERCIAL STOCK SIZES AND MANUFACTURERS TOLERANCES ARE NOT INCLUDED.				

IF IT IS FOUND DESIRABLE TO CHANGE ANY TOLERANCE OR OTHER DETAIL SPECIFIED ON THIS DRAWING NOTIFY THE PURCHASER PROMPTLY.

MS10333

MAXIMUM ALLOWABLE TOLERANCES HAVE BEEN DETERMINED AND DEVIATIONS WILL BE CAUSE FOR REJECTION. REMOVE ALL BURRS AND SHARP EDGES

USED ON

MODEL

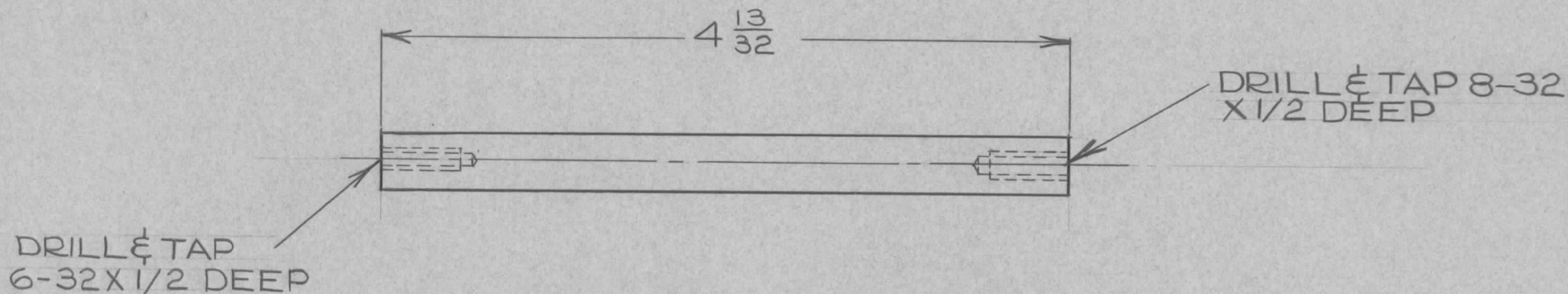
PROJECT NO.

ASS'Y. NO.

DATE

SCU-2

A-10222 JUNE 30/59



NOTICE TO PERSONS RECEIVING THIS DRAWING

THE TECHNICAL MATERIEL CORPORATION claims proprietary right in the material disclosed hereon. This drawing is issued in confidence for engineering information only and may not be reproduced or used to manufacture anything shown hereon without permission from THE TECHNICAL MATERIEL CORPORATION to the user. This drawing is loaned for mutual assistance and is subject to recall at any time.

Property of:

THE TECHNICAL MATERIEL CORPORATION
MAMARONECK, NEW YORK

REQ.	ITEM	PART NO.	DESCRIPTION	SYMBOL
	3/8 O.D. ROD		TMC (Canada) LIMITED OTTAWA ONTARIO	
	STOCK SIZE			
	ALUMINUM		COVER SUPPORT ROD	
	MATERIAL	WEIGHT PER PC.		
	65ST			
	TYPE & TEMPER		DCM	
			DRAWN	ELEC. DES. APP. MECH. DES. APP.
			CHECKED	FINAL APPROVAL
				MS10333
			HEAT TREAT. SPEC.	
			ETCH & IRIDITE	
			FINISH & SPEC. NO.	

ISSUE	ITEM	CHANGED FROM	DATE	CN. NO.	DRAFTS	CHECKER	ENG. APP.
TOLERANCES			SCALE 1:1				
ALL OTHERS	DEC. DIM. ±	FRAC. DIM. ± 1/64	DRILL, PUNCH, COMMERCIAL STOCK SIZES AND MANUFACTURERS TOLERANCES ARE NOT INCLUDED.				
	ANGULAR DIM. ±						

IF IT IS FOUND DESIRABLE TO CHANGE ANY TOLERANCE OR OTHER DETAIL SPECIFIED ON THIS DRAWING NOTIFY THE PURCHASER PROMPTLY.

MS10334-A

MAXIMUM ALLOWABLE TOLERANCES HAVE BEEN DETERMINED AND DEVIATIONS WILL BE CAUSE FOR REJECTION. REMOVE ALL BURRS AND SHARP EDGES

USED ON

MODEL

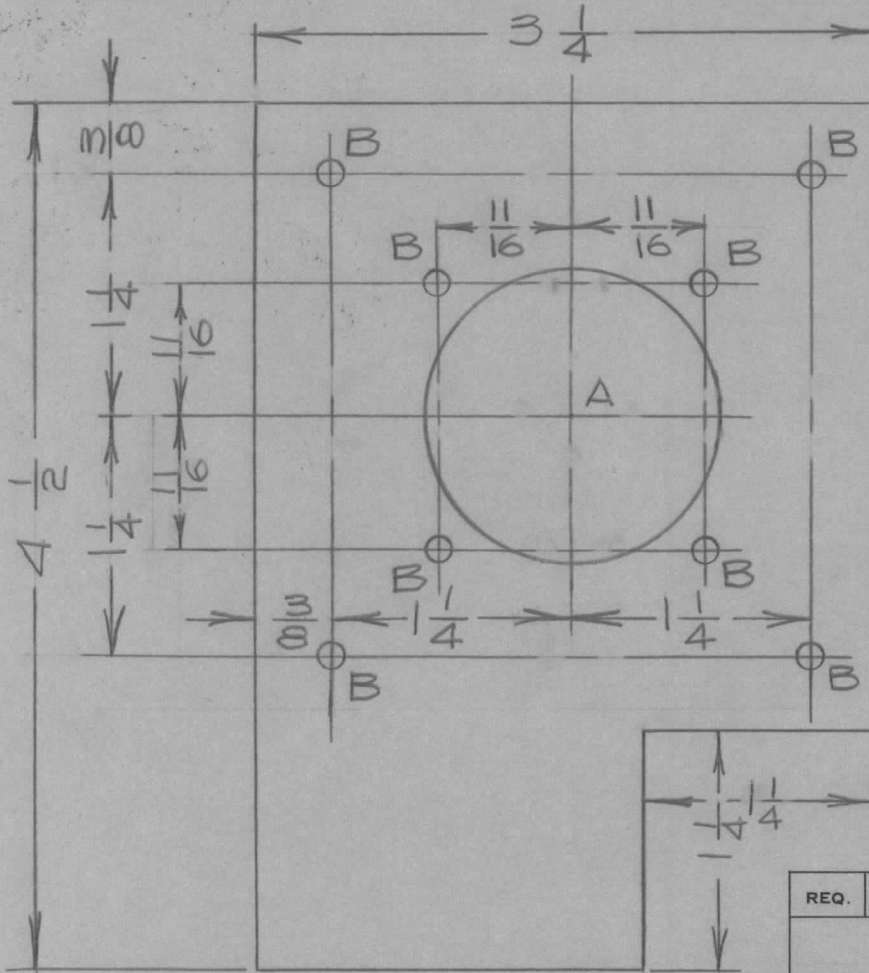
PROJECT NO.

ASS'Y. NO.

DATE

GPT-750 MOD.CAN-1

MAY. 5/60



HOLE A = 1-1/2 DIA.
HOLE B = #28 DRILL.

REQ.	ITEM	PART NO.	DESCRIPTION	SYMBOL			
		14 GA.	TMC (Canada) LIMITED OTTAWA ONTARIO				
		STOCK SIZE					
		ALUM	ADAPTOR PLATE FOR XTAL. OVEN				
		MATERIAL					
		WEIGHT PER PC.					
A		REDRAWN					
		MAY 5/60	JC				
ISSUE	ITEM	CHANGED FROM	DATE	CN. NO.	DRAFTS	CHECKER	ENG. APP.
TOLERANCES			SCALE 1:1				
ALL OTHERS	DEC. DIM. ±		DIMENSIONS IN INCHES UNLESS OTHERWISE SPECIFIED				
	FRAC. DIM. ±		DRILL, PUNCH, COMMERCIAL STOCK SIZES AND MANUFACTURERS TOLERANCES ARE NOT INCLUDED.				
	ANGULAR DIM. ±						
		HEAT TREAT. SPEC.		FINISH & SPEC. NO.			
DRAWN		ELEC. DES. APP.		MECH. DES. APP.			
CHECKED		FINAL APPROVAL					
		MS10334		A			

J.P.C.
DRAWN
ELEC. DES. APP.
MECH. DES. APP.
R.W. Thomas

IF IT IS FOUND DESIRABLE TO CHANGE ANY TOLERANCE OR OTHER DETAIL SPECIFIED ON THIS DRAWING NOTIFY THE PURCHASER PROMPTLY.

MS10337

MAXIMUM ALLOWABLE TOLERANCES HAVE BEEN DETERMINED AND DEVIATIONS WILL BE CAUSE FOR REJECTION. REMOVE ALL BURRS AND SHARP EDGES

USED ON

MODEL

PROJECT NO.

ASS'Y. NO.

DATE

FFRLF

JUNE 25
1959

NOTICE TO PERSONS RECEIVING THIS DRAWING

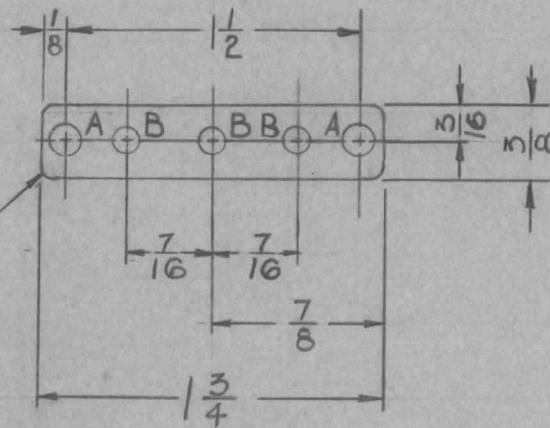
THE TECHNICAL MATERIEL CORPORATION claims proprietary right in the material disclosed hereon. This drawing is issued in confidence for engineering information only and may not be reproduced or used to manufacture anything shown hereon without permission from THE TECHNICAL MATERIEL CORPORATION to the user. This drawing is loaned for mutual assistance and is subject to recall at any time.

Property of:

THE TECHNICAL MATERIEL CORPORATION
MAMARONECK, NEW YORK

HOLE A - $\frac{9}{64}$ DIA.
HOLE B - $\frac{1}{8}$ DIA.

$\frac{1}{16}$ RAD.
4 CORNERS



REQ.	ITEM	PART NO.	DESCRIPTION	SYMBOL
		14 GA.	TMC (Canada) LIMITED	
		STOCK SIZE	OTTAWA ONTARIO	
		ALUMINUM	STANDOFF MOUNTING	
		MATERIAL	PLATE	
		WEIGHT PER PC.	JPC	JPC
		TYPE & TEMPER	DRAWN	ELEC. DES. APP.
			MECH. DES. APP.	
		HEAT TREAT. SPEC.	CHECKED	FINAL APPROVAL
		ETCH & IRIDITE		MS10337
		FINISH & SPEC. NO.		

ISSUE	ITEM	CHANGED FROM	DATE	CN. NO.	DRAFTS	CHECKER	ENG. APP.
TOLERANCES			SCALE NTD				
ALL OTHERS	DEC. DIM. \pm	FRAC. DIM. \pm	DRILL, PUNCH, COMMERCIAL STOCK SIZES AND MANUFACTURERS TOLERANCES ARE NOT INCLUDED.				
		$\frac{1}{64}$					
	ANGULAR DIM. \pm						

IF IT IS FOUND DESIRABLE TO CHANGE ANY TOLERANCE OR OTHER DETAIL SPECIFIED ON THIS DRAWING NOTIFY THE PURCHASER PROMPTLY.

MS10342

MAXIMUM ALLOWABLE TOLERANCES HAVE BEEN DETERMINED AND DEVIATIONS WILL BE CAUSE FOR REJECTION. REMOVE ALL BURRS AND SHARP EDGES

USED ON

MODEL PROJECT NO. ASS'Y. NO. DATE

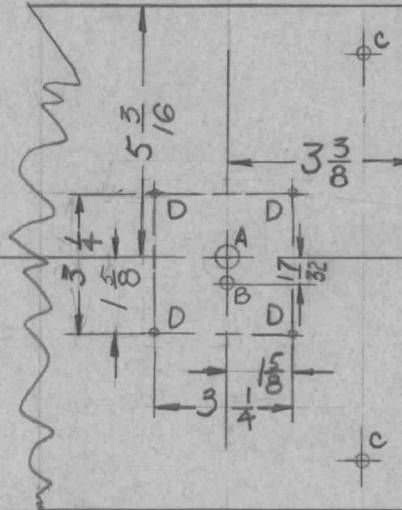
XFK CE-664 JULY 1/59

NOTICE TO PERSONS RECEIVING THIS DRAWING

THE TECHNICAL MATERIEL CORPORATION claims proprietary right in the material disclosed hereon. This drawing is issued in confidence for engineering information only and may not be reproduced or used to manufacture anything shown hereon without permission from THE TECHNICAL MATERIEL CORPORATION to the user. This drawing is loaned for mutual assistance and is subject to recall at any time.

Property of:

THE TECHNICAL MATERIEL CORPORATION
MAMARONECK, NEW YORK



- A = 1/2 DIA.
- B = NO 22 DRILL (.157)
- C = TWO HOLES FOR RIGHT HANDLE AS IDENTIFICATION
- D = NO 47 DRILL - 4 HOLES

REQ.	ITEM	PART NO.	DESCRIPTION	SYMBOL
			TMC (Canada) LIMITED	
STOCK SIZE			OTTAWA	ONTARIO
MATERIAL			MODIFICATION TO	
WEIGHT PER PC.			FRONT PANEL XFK	
TYPE & TEMPER			J.P.C.	M.K.
			DRAWN	ELEC. DES. APP.
			LCM.	1/59
HEAT TREAT. SPEC.			CHECKED	FINAL APPROVAL
FINISH & SPEC. NO.			MS10342	

ISSUE	ITEM	CHANGED FROM	DATE	CN. NO.	DRAFTS	CHECKER	ENG. APP.
TOLERANCES			SCALE 1:4				
ALL OTHERS	DEC. DIM. ± —	FRAC. DIM. ± 1/64	DRILL, PUNCH, COMMERCIAL STOCK SIZES AND MANUFACTURERS TOLERANCES ARE NOT INCLUDED.				
		ANGULAR DIM. ± —					

IF IT IS FOUND DESIRABLE TO CHANGE ANY TOLERANCE OR OTHER DETAIL SPECIFIED ON THIS DRAWING NOTIFY THE PURCHASER PROMPTLY.

MS10345

MAXIMUM ALLOWABLE TOLERANCES HAVE BEEN DETERMINED AND DEVIATIONS WILL BE CAUSE FOR REJECTION. REMOVE ALL BURRS AND SHARP EDGES

USED ON

MODEL

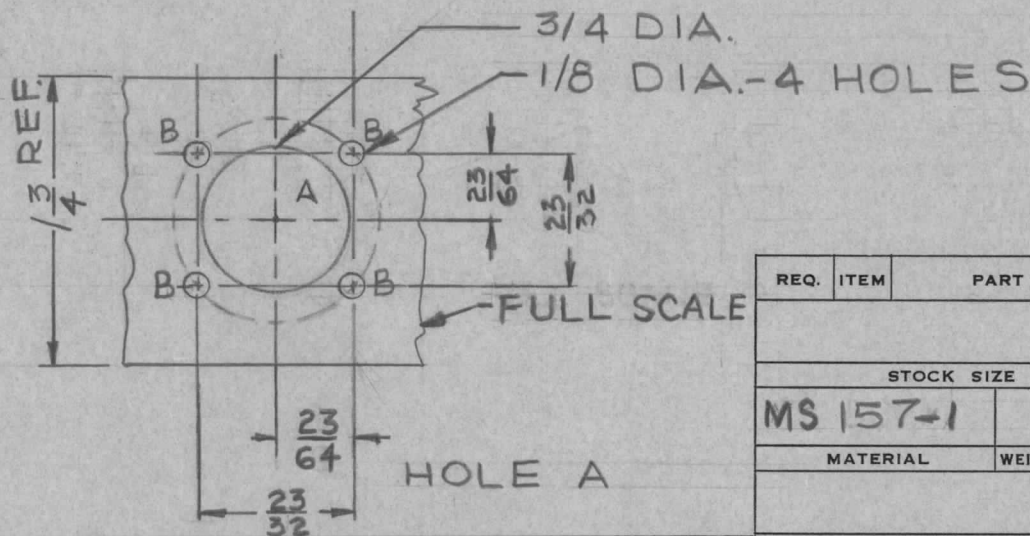
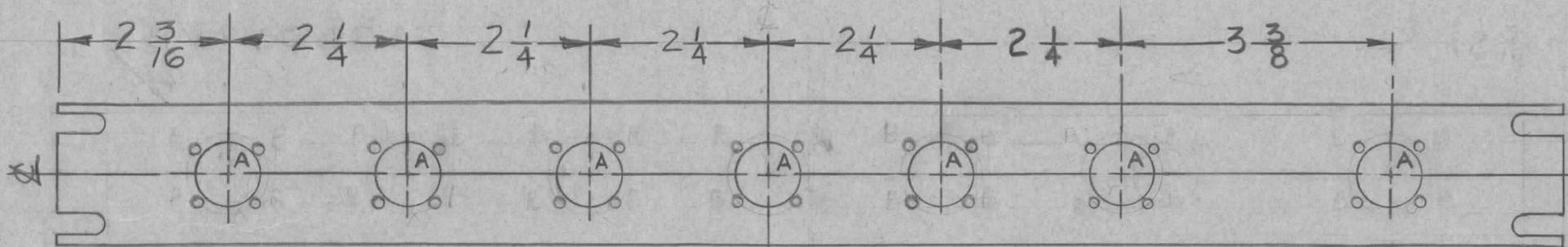
PROJECT NO.

ASS'Y. NO.

DATE

CE 5003

JULY 20/59



HOLE A = 3/4 DIA.
HOLE B = 1/8 DIA.

REQ.	ITEM	PART NO.	DESCRIPTION	SYMBOL
			TMC (Canada) LIMITED OTTAWA ONTARIO	
		MS 157-1	PATCH PANEL	
			RCN AMCG-5	
			JPC	
			DRAWN	ELEC. DES. APP. MECH. DES. APP.
			CHECKED	FINAL APPROVAL
			HEAT TREAT. SPEC.	
			NAVY GREY 1-100	
			FINISH & SPEC. NO.	

ISSUE	ITEM	CHANGED FROM	DATE	CN. NO.	DRAFTS	CHECKER	ENG. APP.
TOLERANCES			SCALE AS SHOWN				
ALL OTHERS	DEC. DIM. ±	FRAC. DIM. ±	ANGULAR DIM. ±	DRILL, PUNCH, COMMERCIAL STOCK SIZES AND MANUFACTURERS TOLERANCES ARE NOT INCLUDED.			
		1/64					

MS10345

IF IT IS FOUND DESIRABLE TO CHANGE ANY TOLERANCE OR OTHER DETAIL SPECIFIED ON THIS DRAWING NOTIFY THE PURCHASER PROMPTLY.

STANDARD DRAWING

MS 10 353

MAXIMUM ALLOWABLE TOLERANCES HAVE BEEN DETERMINED AND DEVIATIONS WILL BE CAUSE FOR REJECTION. REMOVE ALL BURRS AND SHARP EDGES

USED ON

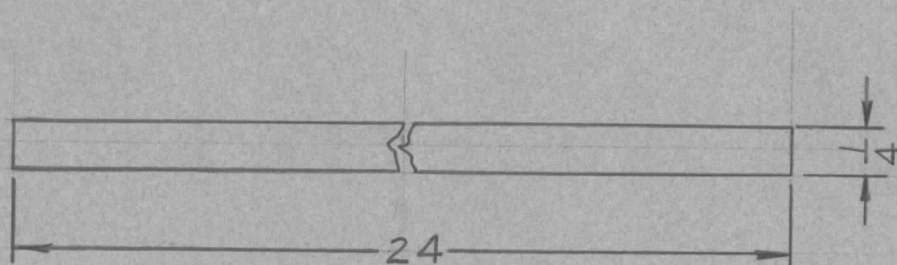
MODEL

PROJECT NO.

ASS'Y. NO.

DATE

AUG. 14/59



NOTICE TO PERSONS RECEIVING THIS DRAWING

THE TECHNICAL MATERIEL CORPORATION claims proprietary right in the material disclosed hereon. This drawing is issued in confidence for engineering information only and may not be reproduced or used to manufacture anything shown hereon without permission from THE TECHNICAL MATERIEL CORPORATION to the user. This drawing is loaned for assistance and is subject to recall at any time.

Property of:

THE TECHNICAL MATERIEL CORPORATION
MAMARONECK, NEW YORK

REQ.	ITEM	PART NO.	DESCRIPTION	SYMBOL
		0021	SOFT COPPER	
		STOCK SIZE		
		MATERIAL	WEIGHT PER PC.	
		TYPE & TEMPER		
		HEAT TREAT. SPEC.		
		FINISH & SPEC. NO.		
			TMC (Canada) LIMITED OTTAWA ONTARIO	
			GROUNDING STRIP	
			JPC	
			DRAWN	ELEC. DES. APP. MECH. DES. APP.
			LPC M	1 de
			CHECKED	FINAL APPROVAL
			SILVER PLATE	
				MS 10 353

ISSUE	ITEM	CHANGED FROM	DATE	CN. NO.	DRAFTS	CHECKER	ENG. APP.
TOLERANCES		SCALE NTS					
ALL OTHERS	DEC. DIM. ± FRAC. DIM. ± 1/64 ANGULAR DIM. ±	DRILL, PUNCH, COMMERCIAL STOCK SIZES AND MANUFACTURERS TOLERANCES ARE NOT INCLUDED.					

IF IT IS FOUND DESIRABLE TO CHANGE ANY TOLERANCE OR OTHER DETAIL SPECIFIED ON THIS DRAWING NOTIFY THE PURCHASER PROMPTLY.

MAXIMUM ALLOWABLE TOLERANCES HAVE BEEN DETERMINED AND DEVIATIONS WILL BE CAUSE FOR REJECTION. REMOVE ALL BURRS AND SHARP EDGES

MS10356

USED ON

MODEL

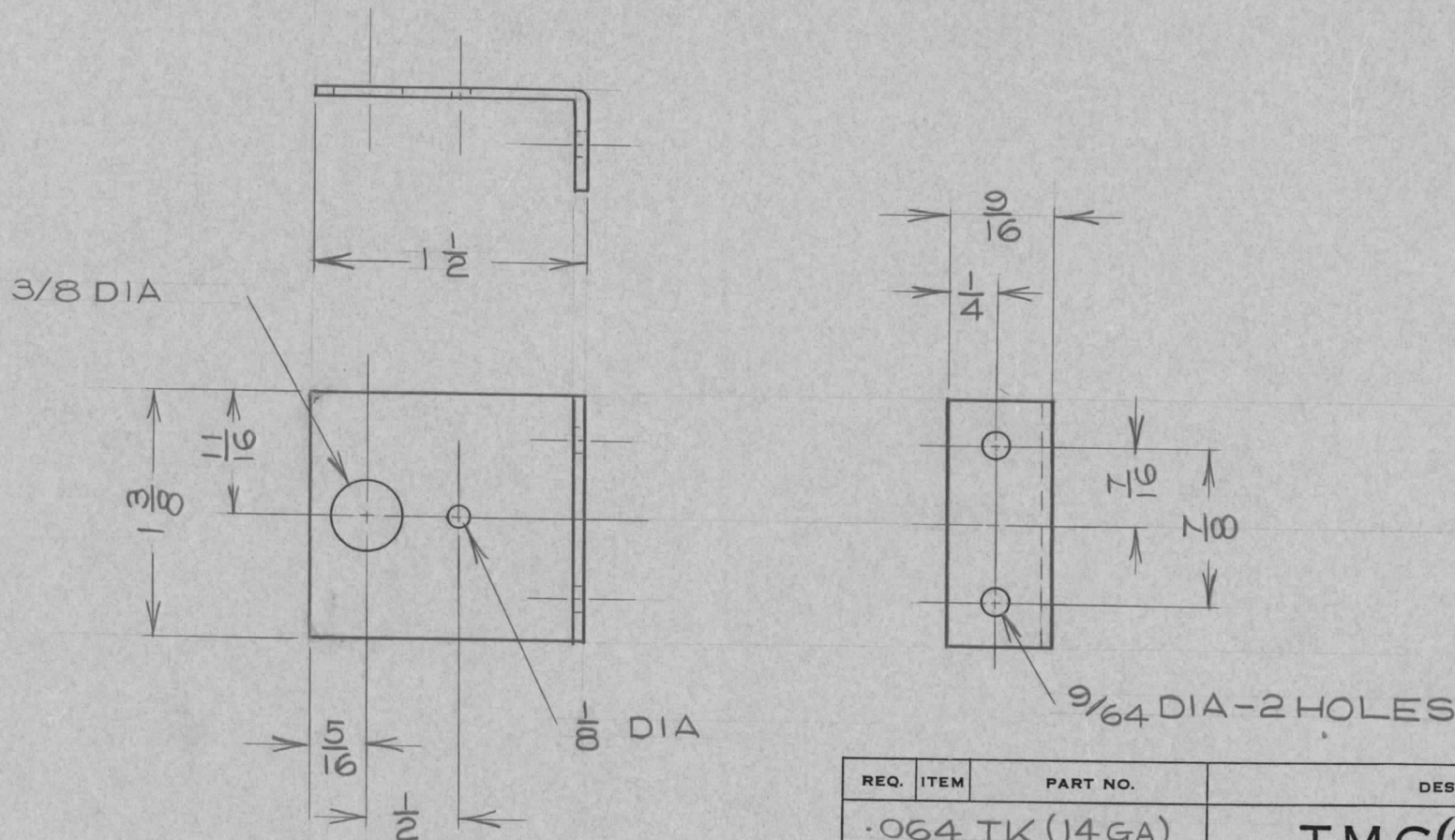
PROJECT NO.

ASS'Y. NO.

DATE

PCA 1 & 2 CE5010

SEPT 1
1959



REQ.	ITEM	PART NO.	DESCRIPTION	SYMBOL
		.064 TK (14 GA)	TMC (Canada) LIMITED OTTAWA ONTARIO	
		STOCK SIZE		
		ALUMINUM	BRACKET - SWITCH	
		MATERIAL	PCA 1 & 2	
		WEIGHT PER PC.		
		TYPE & TEMPER	DCM	
			DRAWN	ELEC. DES. APP. MECH. DES. APP.
		HEAT TREAT. SPEC.	CHECKED	FINAL APPROVAL
		ETCH & IRIDITE		MS10356
		FINISH & SPEC. NO.		

ISSUE	ITEM	CHANGED FROM	DATE	CN. NO.	DRAFTS	CHECKER	ENG. APP.

TOLERANCES

SCALE NTS

ALL OTHERS

DEC. DIM. ±
FRAC. DIM. ± 1/64
ANGULAR DIM. ±

DRILL, PUNCH, COMMERCIAL STOCK SIZES AND MANUFACTURERS TOLERANCES ARE NOT INCLUDED.

IF IT IS FOUND DESIRABLE TO CHANGE ANY TOLERANCE OR OTHER DETAIL SPECIFIED ON THIS DRAWING NOTIFY THE PURCHASER PROMPTLY.

MAXIMUM ALLOWABLE TOLERANCES HAVE BEEN DETERMINED AND DEVIATIONS WILL BE CAUSE FOR REJECTION. REMOVE ALL BURRS AND SHARP EDGES

MS10371

USED ON

MODEL

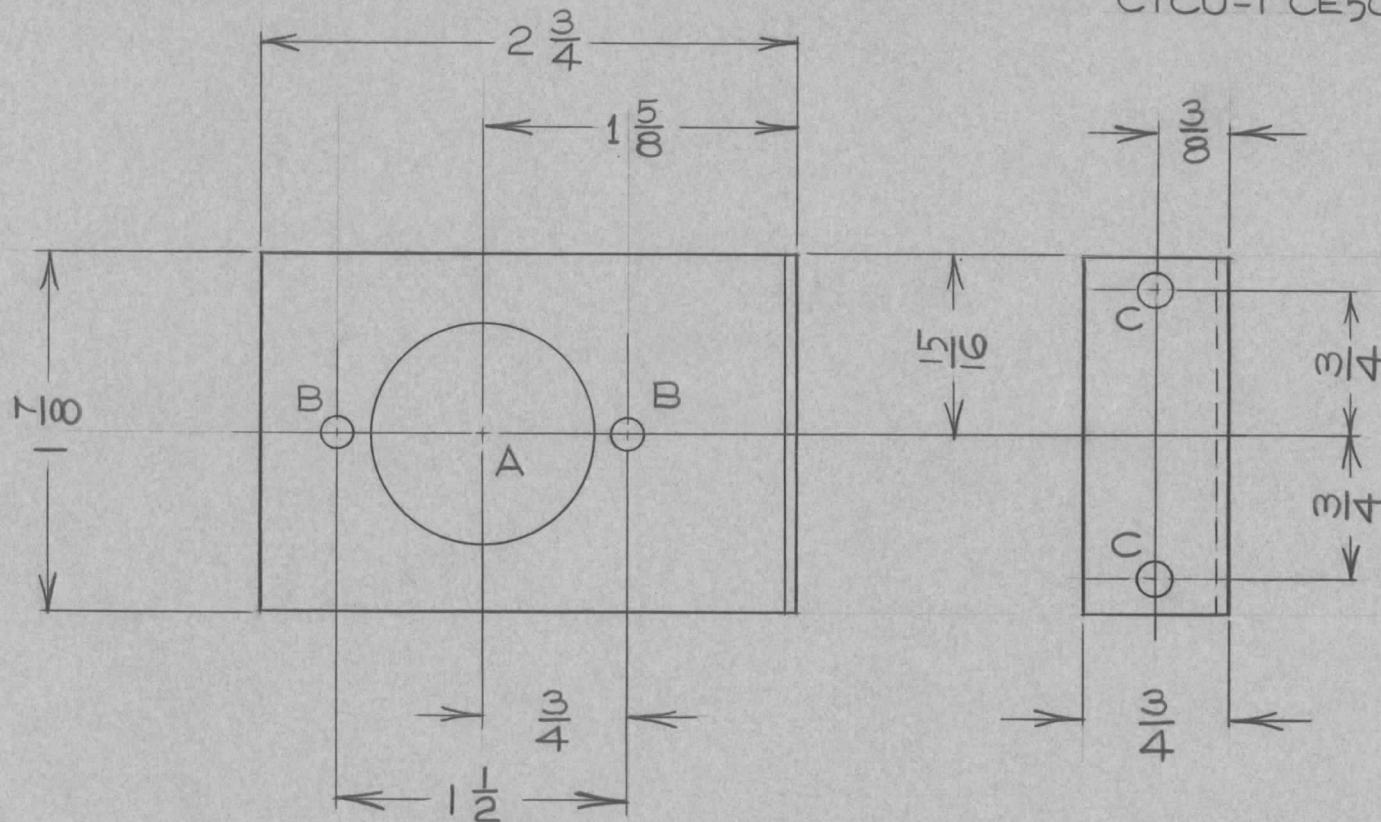
PROJECT NO.

ASS'Y. NO.

DATE

CTCU-1 CE5004-A

OCT 20
1959



HOLE A 1-1/8 DIA
 " B 11/64 DIA
 " C 13/64 DIA

REQ.	ITEM	PART NO.	DESCRIPTION	SYMBOL
			14 GA SH.	
			STOCK SIZE	
			ALUMINUM	
			MATERIAL	
			WEIGHT PER PC.	
			TYPE & TEMPER	
			HEAT TREAT. SPEC.	
			FINISH & SPEC. NO.	
			DCM	
			DRAWN	
			ELEC. DES. APP.	
			CHECKED	
			FINAL APPROVAL	
			ETCH & IRIDITE	

TMC (Canada) LIMITED
 OTTAWA ONTARIO

RELAY BRACKET

CTCU-1

R.W. Thomas
 MECH. DES. APP.

MS10371

ISSUE	ITEM	CHANGED FROM	DATE	CN. NO.	DRAFTS	CHECKER	ENG. APP.
TOLERANCES			SCALE 1:1				
ALL OTHERS	DEC. DIM. ± FRAC. DIM. ± 1/64 ANGULAR DIM. ±		DRILL, PUNCH, COMMERCIAL STOCK SIZES AND MANUFACTURERS TOLERANCES ARE NOT INCLUDED.				

IF IT IS FOUND DESIRABLE TO CHANGE ANY TOLERANCE OR OTHER DETAIL SPECIFIED ON THIS DRAWING NOTIFY THE PURCHASER PROMPTLY.

MAXIMUM ALLOWABLE TOLERANCES HAVE BEEN DETERMINED AND DEVIATIONS WILL BE CAUSE FOR REJECTION. REMOVE ALL BURRS AND SHARP EDGES

MS10377A

USED ON

MODEL

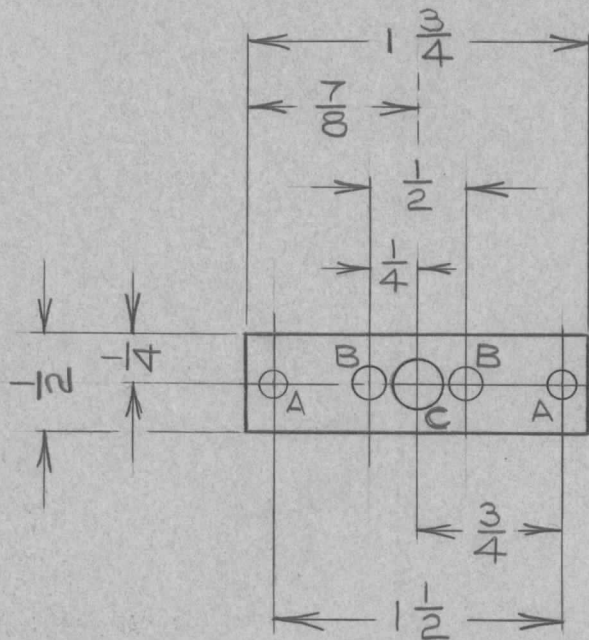
PROJECT NO.

ASS'Y. NO.

DATE

AMCG-5 CE646

NOV 23
1959



HOLE A - 1/8 DIA
HOLE B - 9/64 DIA
HOLE C - 1/4 DIA

REQ.	ITEM	PART NO.	DESCRIPTION	SYMBOL
		.064	TMC (Canada) LIMITED OTTAWA ONTARIO	
		STOCK SIZE		
		ALUMINUM	MOUNTING STRIP	
		MATERIAL	POTENTIOMETER	
		WEIGHT PER PC.		
		5052-H32	DCM	
		TYPE & TEMPER	DRAWN	ELEC. DES. APP. MECH. DES. APP.
		HEAT TREAT. SPEC.	CHECKED	FINAL APPROVAL
		5101 & S404		
		FINISH & SPEC. NO.		

ISSUE	ITEM	CHANGED FROM	DATE	CN. NO.	DRAFTS	CHECKER	ENG. APP.
A	3	FINE SPEC. WAS ETCH & IRIDITE	10-5-62	7299	g/h	Jude	
	2	TYPE & TEMPER ADDED					
	1	STOCK WAS 14 GA. SH.					

TOLERANCES		SCALE
ALL OTHERS	DEC. DIM. ± FRAC. DIM. ± 1/64 ANGULAR DIM. ±	1:1
DRILL, PUNCH, COMMERCIAL STOCK SIZES AND MANUFACTURERS TOLERANCES ARE NOT INCLUDED.		

MS10377A

IF IT IS FOUND DESIRABLE TO CHANGE ANY TOLERANCE OR OTHER DETAIL SPECIFIED ON THIS DRAWING NOTIFY THE PURCHASER PROMPTLY.

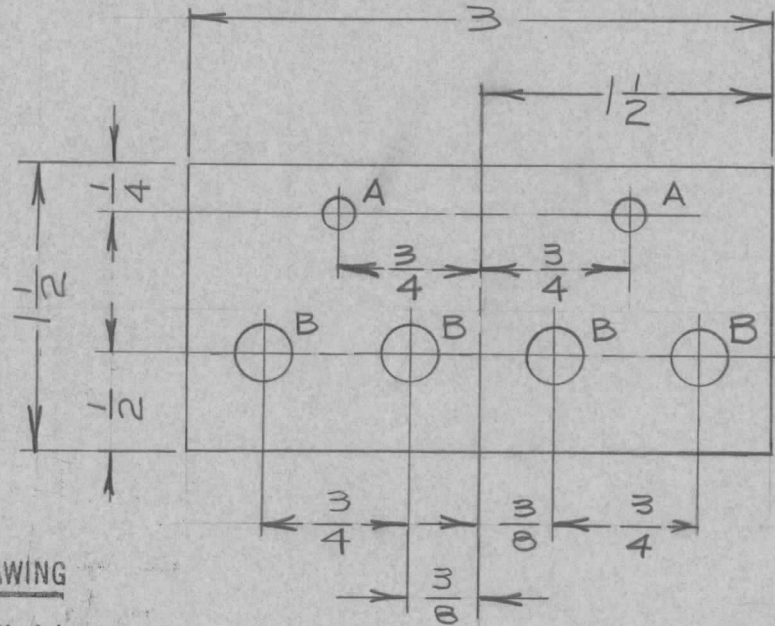
MS10380

MAXIMUM ALLOWABLE TOLERANCES HAVE BEEN DETERMINED AND DEVIATIONS WILL BE CAUSE FOR REJECTION. REMOVE ALL BURRS AND SHARP EDGES

USED ON

MODEL	PROJECT NO.	ASS'Y. NO.	DATE
-------	-------------	------------	------

CTCU-1 CE5004 A NOV. 27/59



NOTICE TO PERSONS RECEIVING THIS DRAWING

THE TECHNICAL MATERIEL CORPORATION claims proprietary right in the material disclosed hereon. This drawing is issued in confidence for engineering information only and may not be reproduced or used to manufacture anything shown hereon without permission from THE TECHNICAL MATERIEL CORPORATION to the user. This drawing is loaned for mutual assistance and is subject to recall at any time.

Property of:

THE TECHNICAL MATERIEL CORPORATION
MAMARONECK, NEW YORK

HOLE A = 11/64 DIA.
HOLE B = 9/32 DIA. -
REMOVE BURRS

REQ.	ITEM	PART NO.	DESCRIPTION	SYMBOL
			1/8" SHEET	
			STOCK SIZE	
			ALUM.	
			MATERIAL	
			WEIGHT PER PC.	
			TYPE & TEMPER	
			HEAT TREAT. SPEC.	
			FINISH & SPEC. NO.	
			TMC (Canada) LIMITED OTTAWA ONTARIO	
			RECTIFIER BRACKET FOR CTCU-1	
			JPC	R.W. Thomas
			DRAWN	ELEC. DES. APP. MECH. DES. APP.
			DCM	
			CHECKED	FINAL APPROVAL
				MS10380

ISSUE	ITEM	CHANGED FROM	DATE	CN. NO.	DRAFTS	CHECKER	ENG. APP.
TOLERANCES			SCALE 1:1				
ALL OTHERS	DEC. DIM. ±	—	DRILL, PUNCH, COMMERCIAL STOCK SIZES AND MANUFACTURERS TOLERANCES ARE NOT INCLUDED.				
	FRAC. DIM. ±	1/64					
	ANGULAR DIM. ±	—					