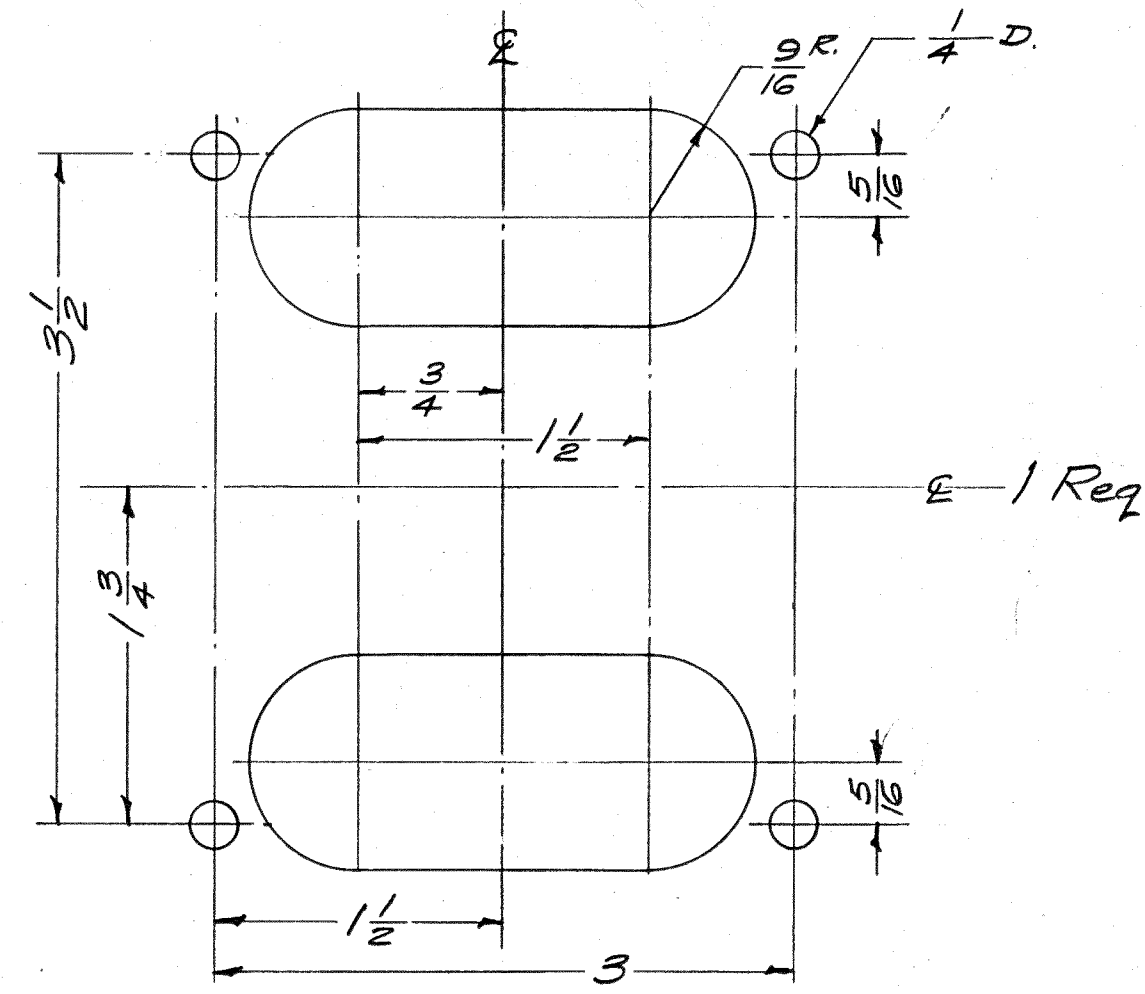
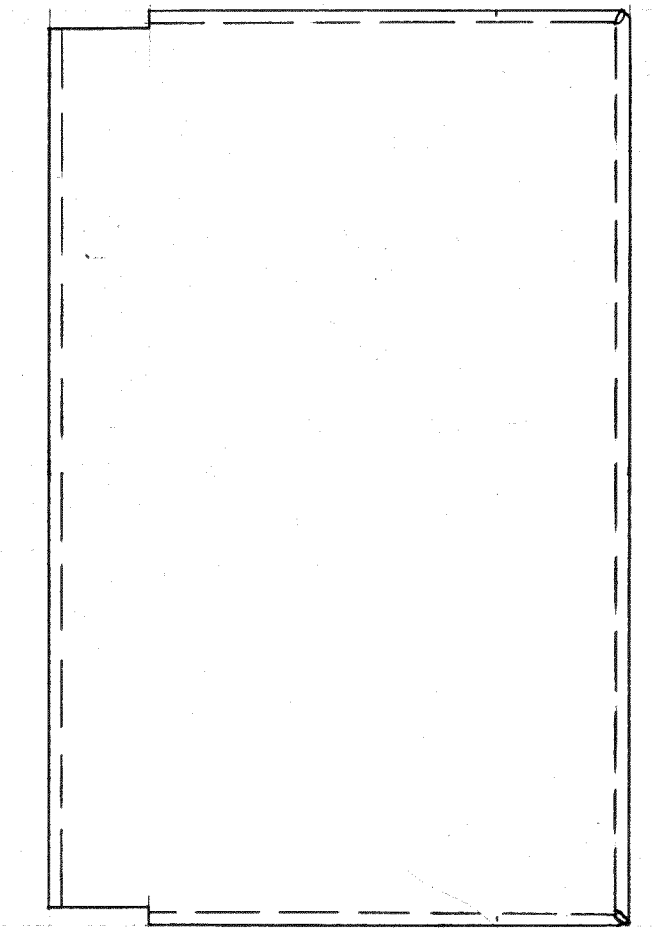
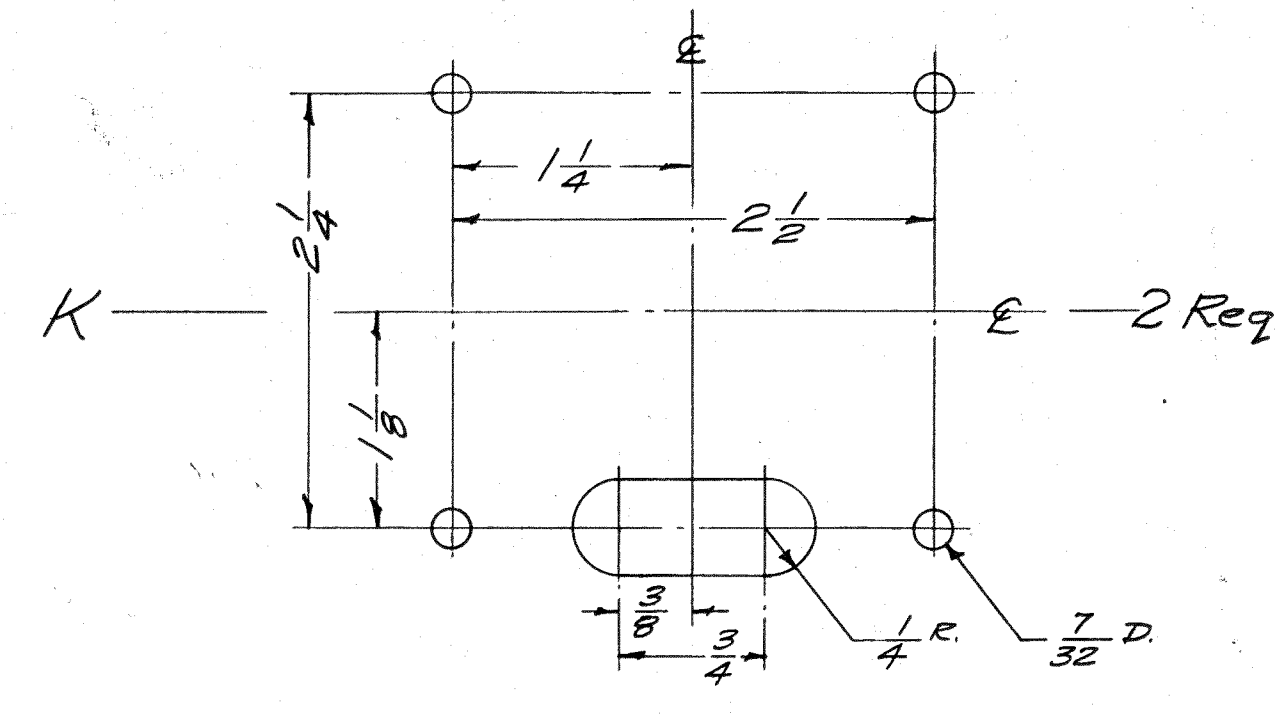
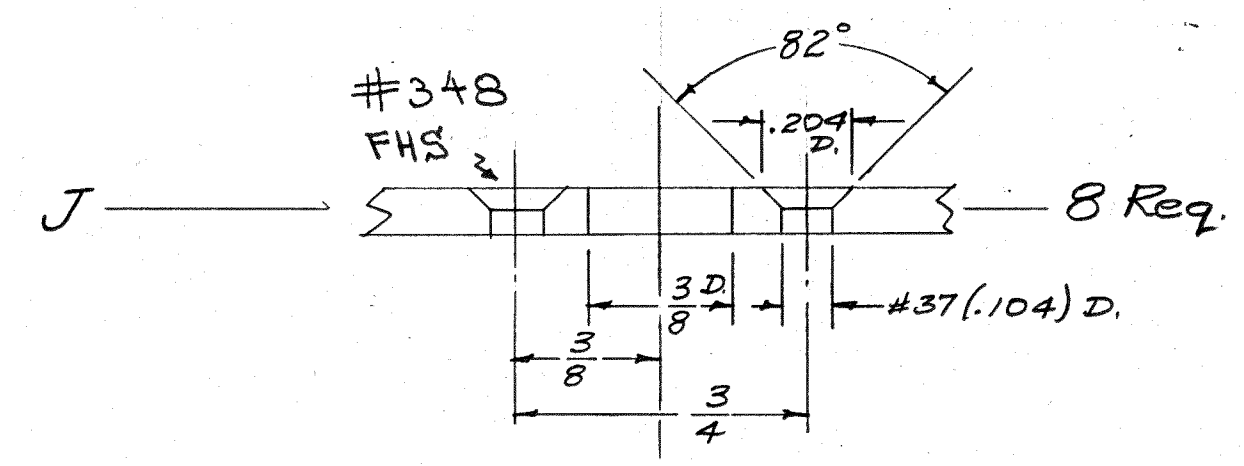
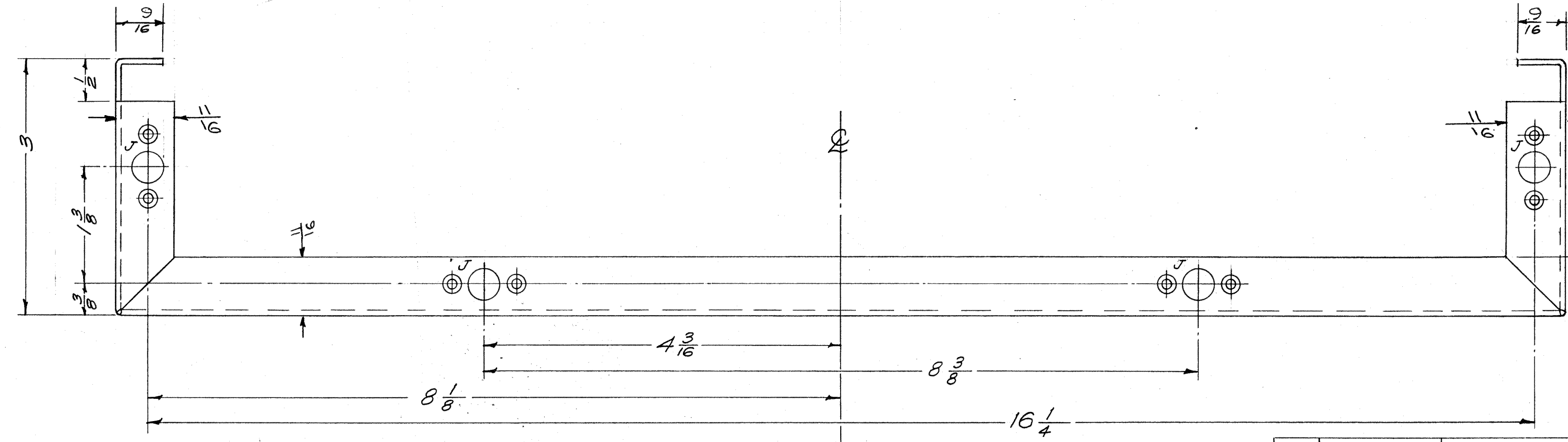
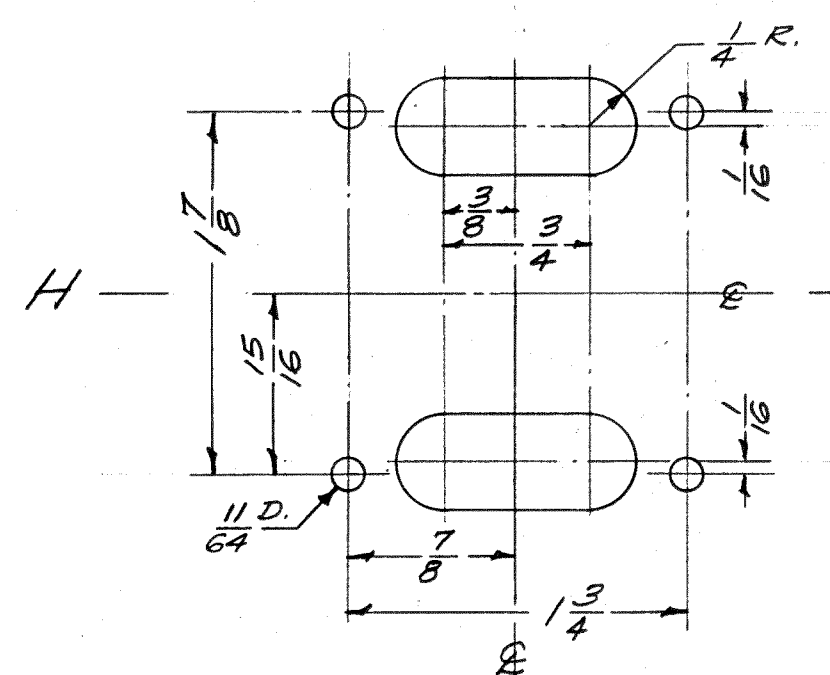
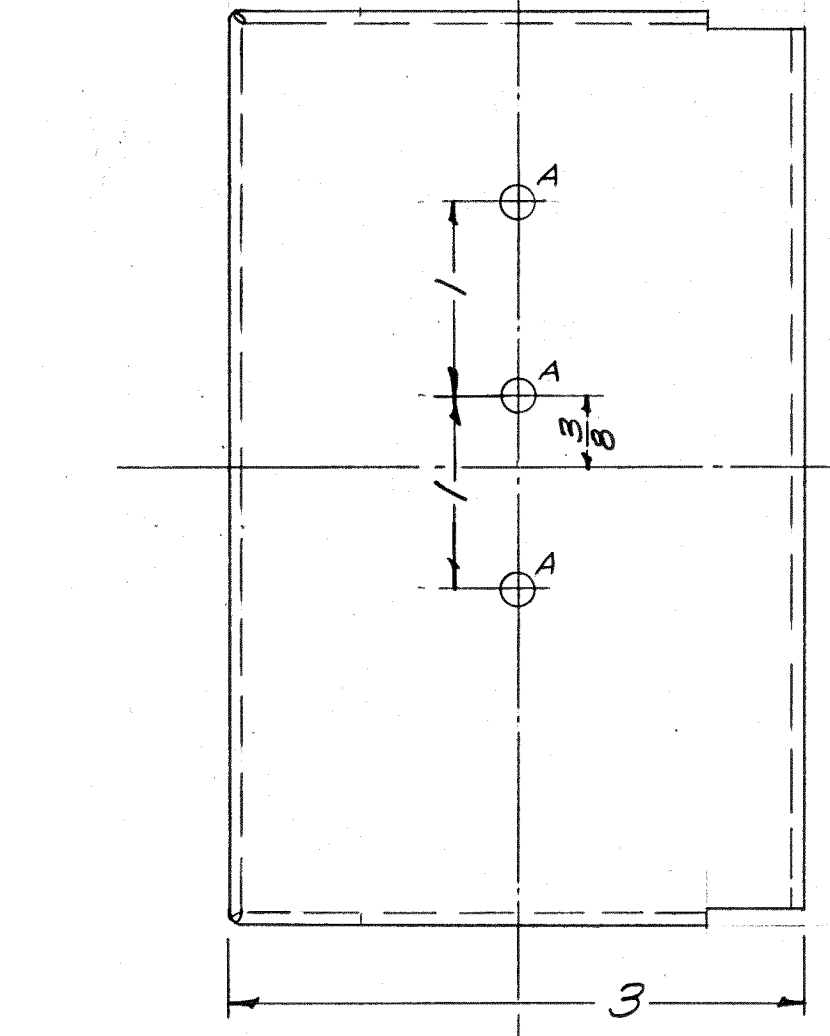
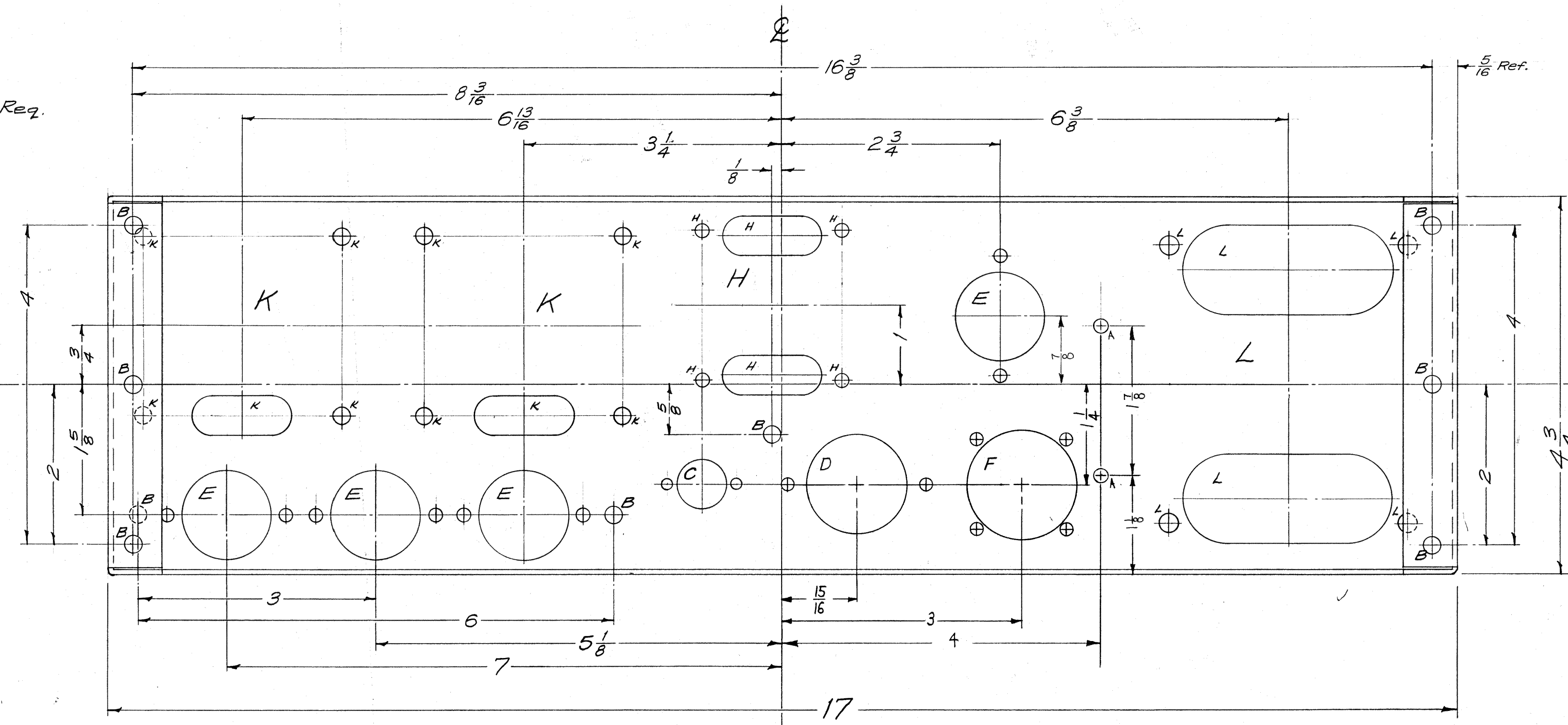
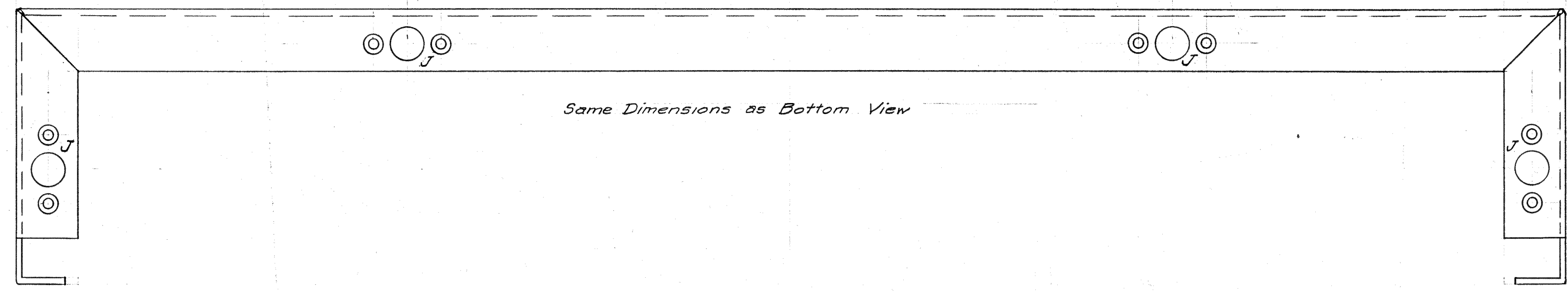
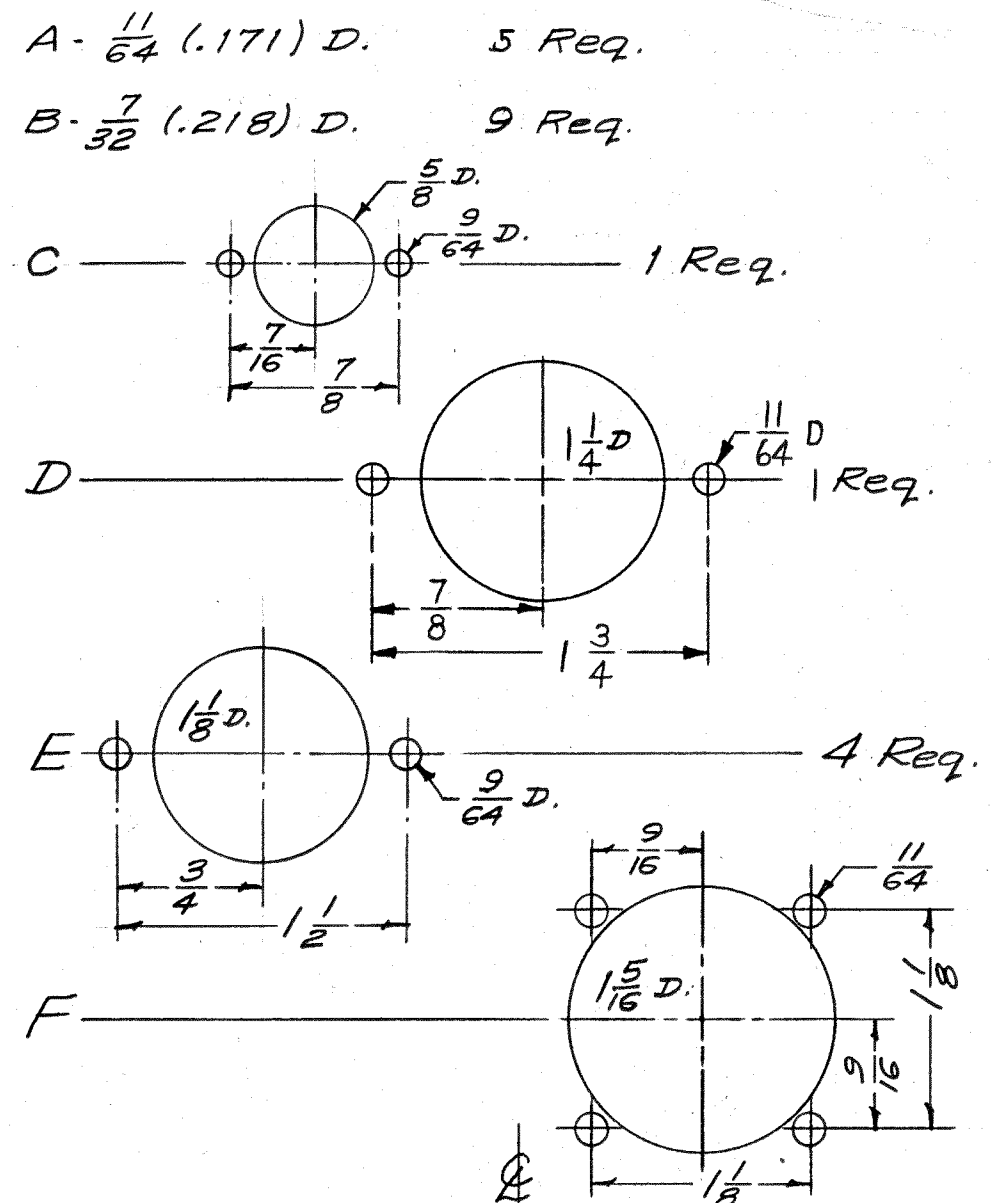


IF IT IS FOUND DESIRABLE TO CHANGE ANY TOLERANCE OR OTHER DETAIL SPECIFIED ON THIS DRAWING NOTIFY THE PURCHASER PROMPTLY.  
 MAXIMUM ALLOWABLE TOLERANCES HAVE BEEN DETERMINED AND DEVIATIONS WILL BE CAUSE FOR REJECTION. REMOVE ALL BURRS AND SHARP EDGES



F	REVISED & RELOCATED HOLE HOLES	4-5-67	18086	L.A.K.	WCF		
E	HOUSING LIP WAS 1/8"	9/15/60					
D	TWO "A" HOLES ADDED .081 THK. WALL DIA.	11/14/60	1760				
C	S-404 YEL. IRIDITE WAS 1/16"	1/29/1001	116		EMN		
B	REPAIRMAN'S DIMENSIONS 1/8" & 1/16" CHANGED	8/27/58	2				
ISSUE	ITEM	CHANGED FROM	DATE	GN. NO.	DRAFTS	CHECKER	ENG. APP.
TOLERANCES		SCALE: FULL					
ALL OTHERS	DEC. DIM. $\pm \frac{1}{64}$ FRAC. DIM. $\pm \frac{1}{32}$ ANGULAR DIM. $\pm 1'$	DRILL PUNCH, COMMERCIAL STOCK SIZES AND MANUFACTURERS TOLERANCES ARE NOT INCLUDED.					

1	A-1397	SBE-1,2			8-27-58
REQ. PER UNIT	MODEL	PROJECT NO.	APPY. NO.	DATE	
USED ON					

REF: LD-357(8) Lettering

REQ. ITEM	PART NO.	DESCRIPTION	SYMBOL
.081 THK.		THE TECHNICAL MATERIEL CORP.	
STOCK SIZE		MAMARONECK, NEW YORK	
ALUMINUM		CHASSIS, POWER SUPPLY	
MATERIAL	WEIGHT PER PC.		
5052-H32			
TYPE & TEMPER	4/8/58	ELC. DES. APP.	MECH. DES. APP.
	RE-DRAWN	CHECKED	
HEAT TREAT. SPEC.		FINAL APPROVAL	
S-404 YEL. IRIDITE FINISH & SPEC. NO.			

MS-114 F

IF IT IS FOUND DESIRABLE TO CHANGE ANY TOLERANCE OR OTHER DETAIL SPECIFIED ON THIS DRAWING NOTIFY THE PURCHASER PROMPTLY.  
 MAXIMUM ALLOWABLE TOLERANCES HAVE BEEN DETERMINED AND DEVIATIONS WILL BE CAUSE FOR REJECTION. REMOVE ALL BURRS AND SHARP EDGES.

A -  $\frac{11}{64}$  (.171) D. 5 Req.

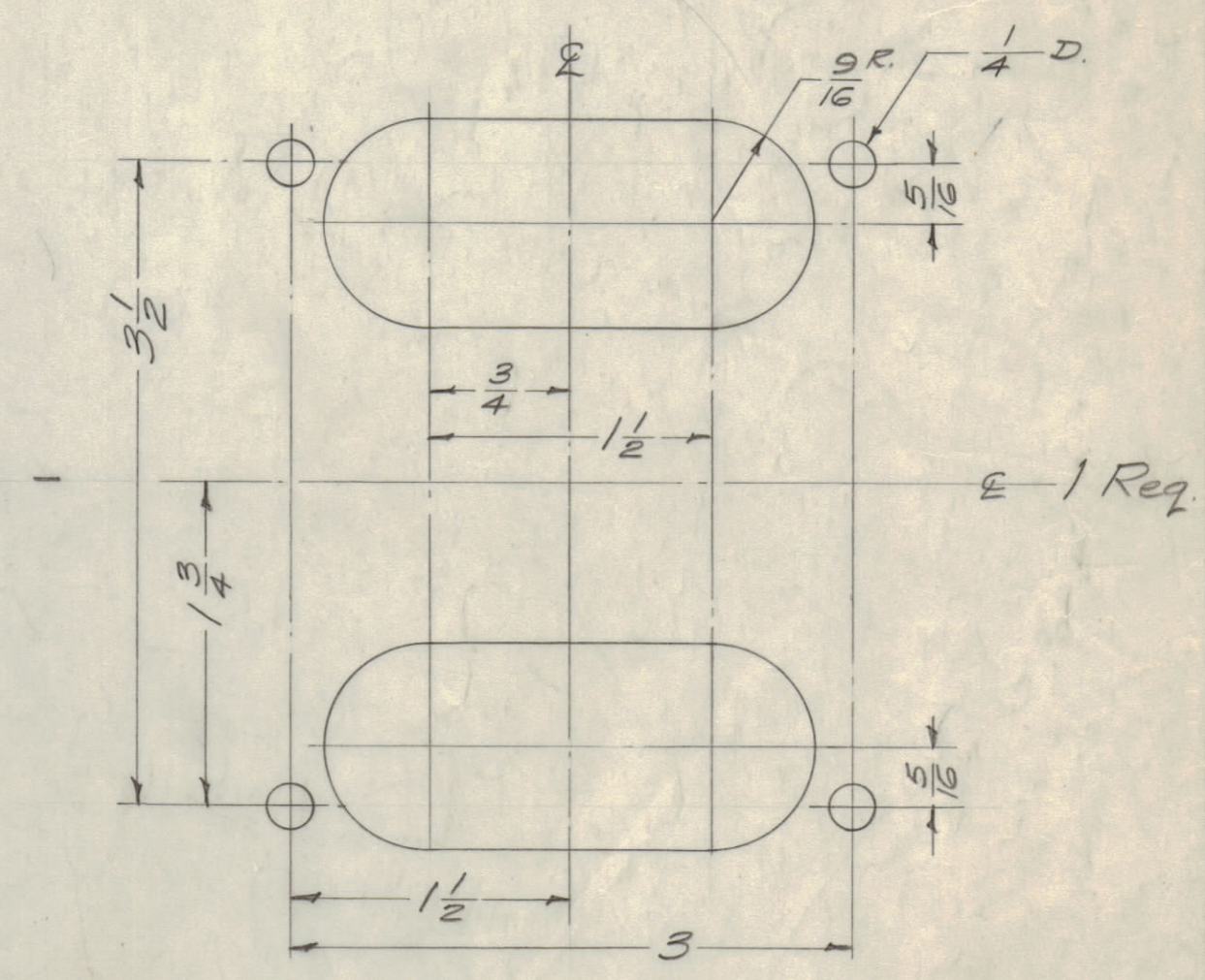
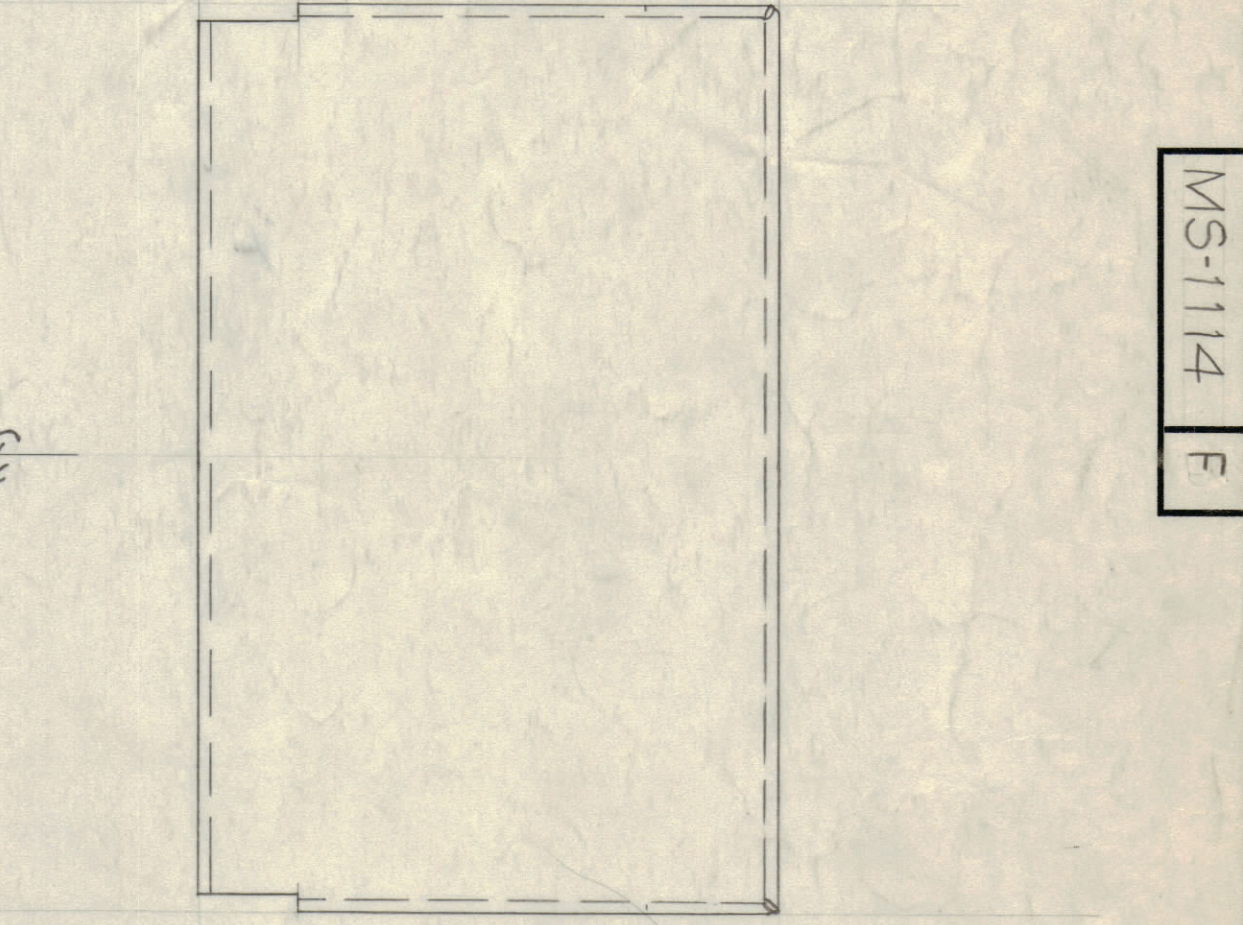
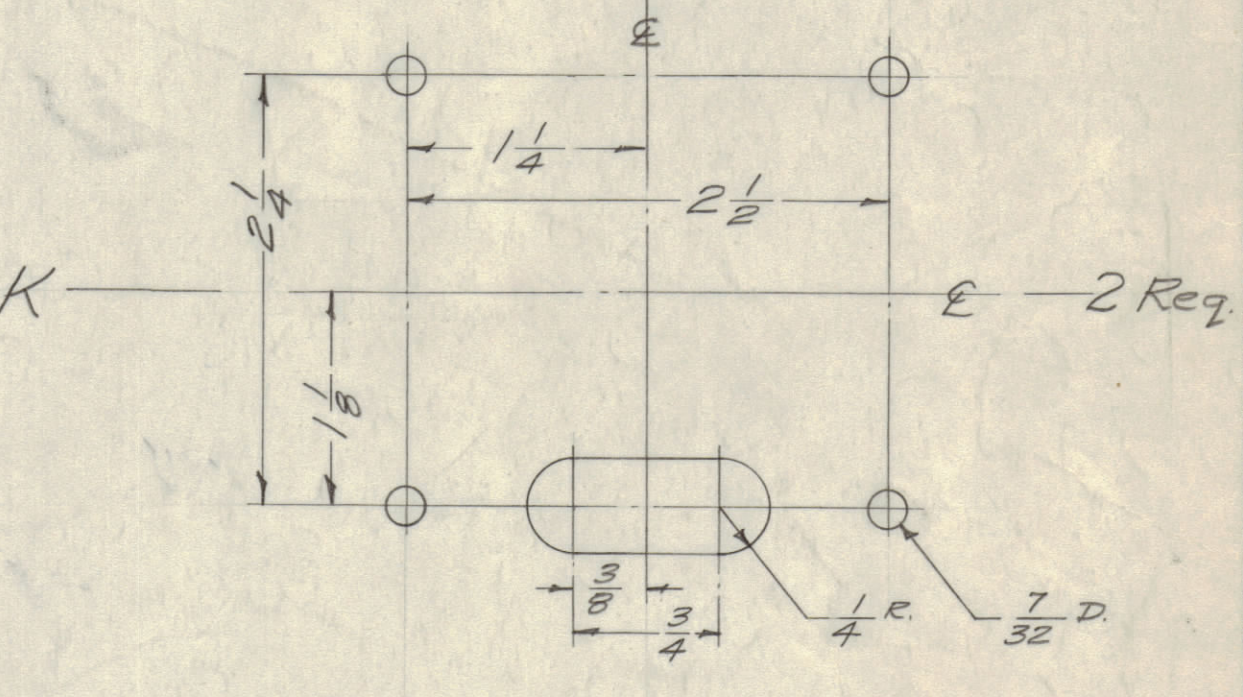
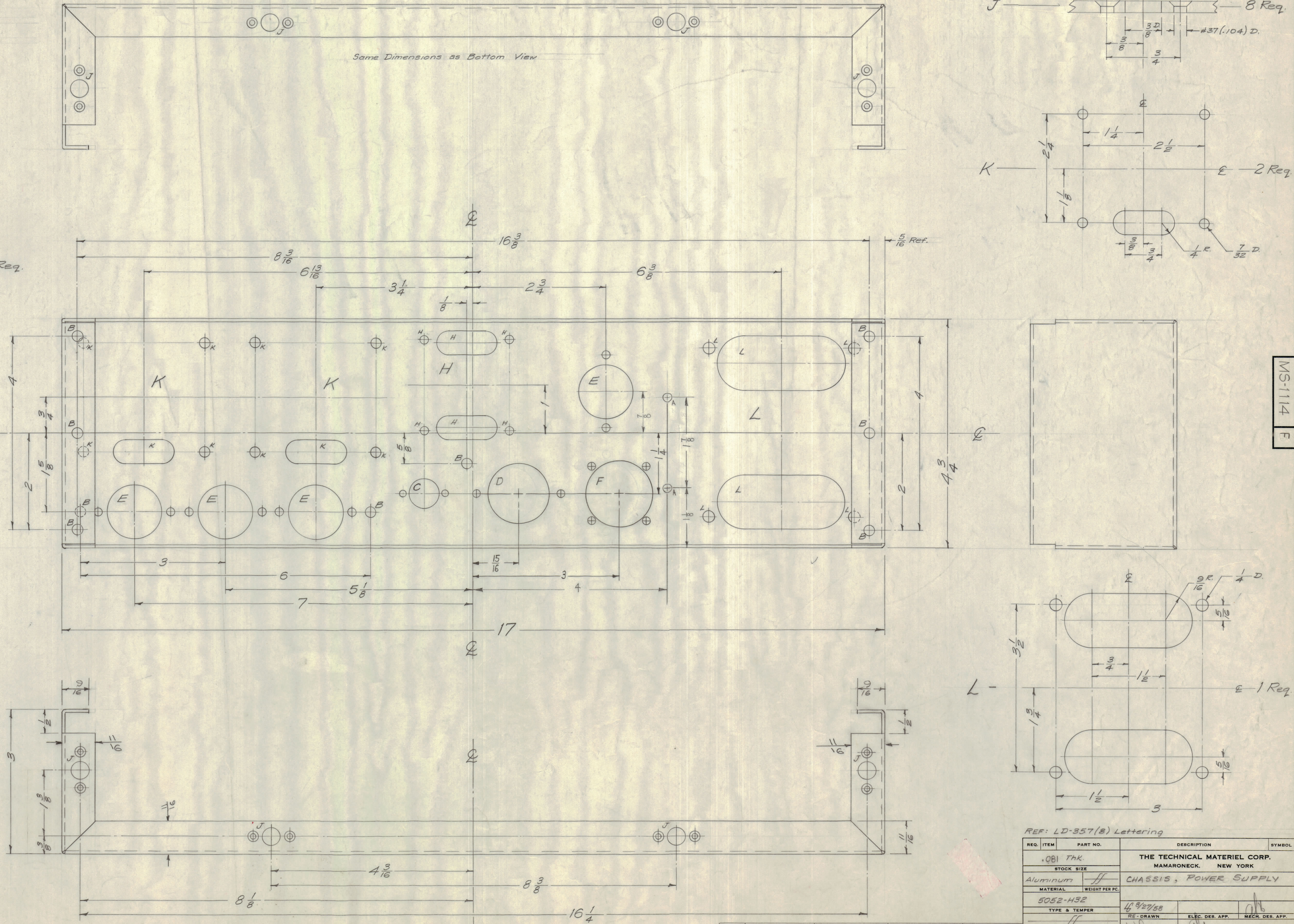
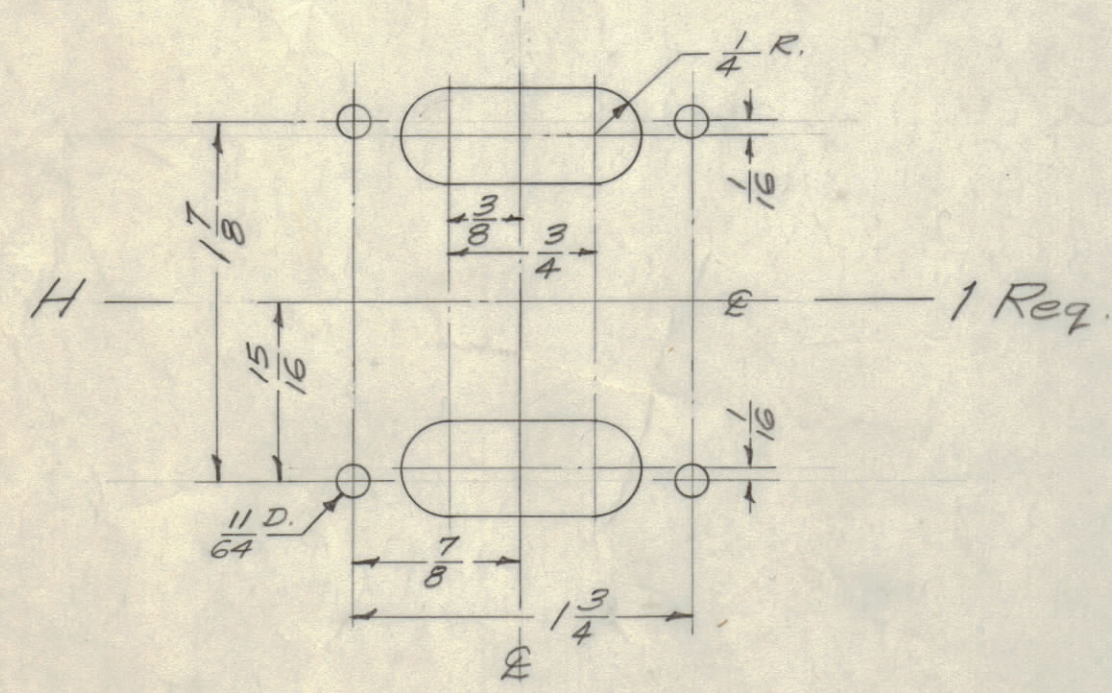
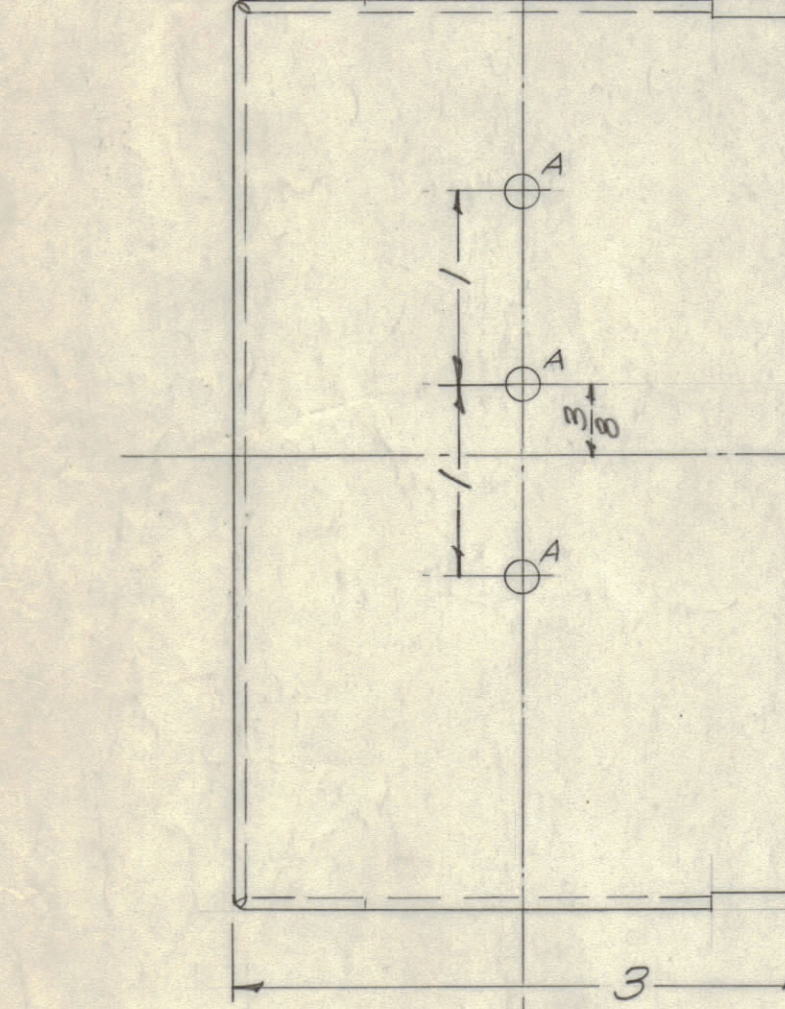
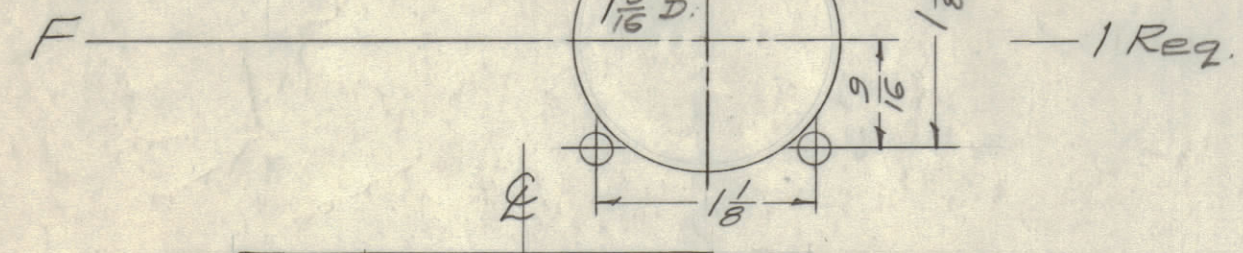
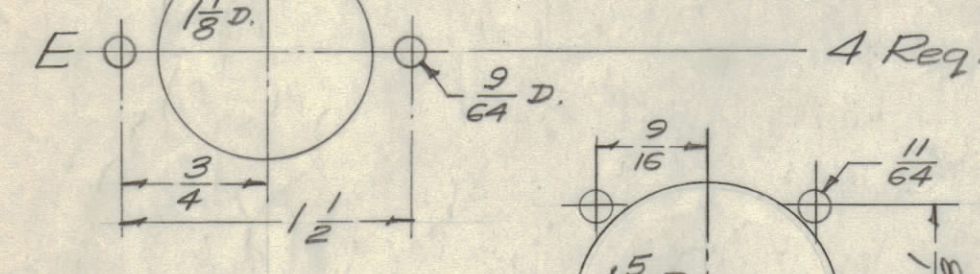
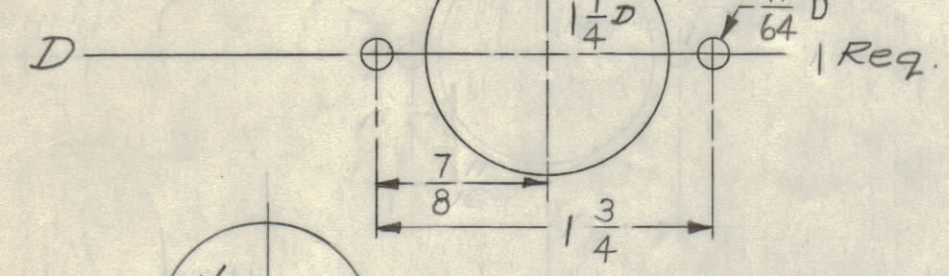
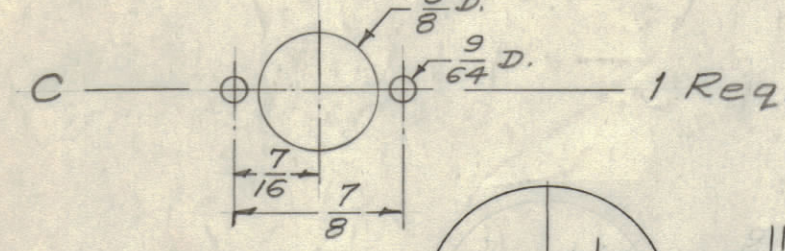
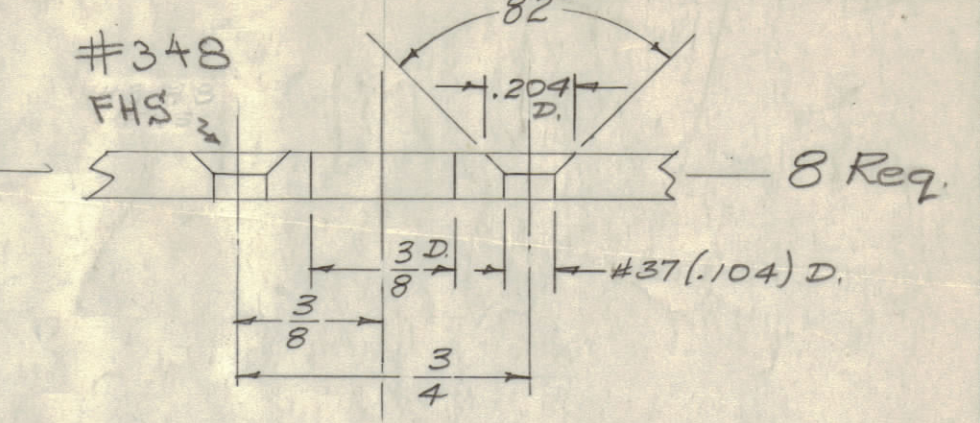
B -  $\frac{7}{32}$  (.218) D. 9 Req.

C -  $\frac{5}{8}$  D. 1 Req.

D -  $\frac{11}{64}$  D. 1 Req.

E -  $\frac{9}{64}$  D. 4 Req.

F -  $\frac{15}{16}$  D. 1 Req.



MS-1114 F

F	REVISED & RELOCATED DIP HOLES	4-5-67/18086	LAX	
E	MOUNTING LIP WAS $\frac{11}{16}$	$\frac{9}{16}$	+	
D	TWO A HOLES ADDED	11/16	1 1/2	
C	OBLIQUE WITH 30-15-15 WAS S-404 YEL. MATITE	11/16	1 1/2	
B	S-101 CAUSTIC DIP PREPARED - REVISIONS NO CHANGES	1001	16	EMN
A	CHANGED FROM	DATE	CN. NO.	DRAFTS
TOLERANCES		SCALE: FULL		
ALL	DEC. DIM. $\pm .001$	DRILL PUNCH, COMMERCIAL STOCK		
OTHERS	ANGULAR DIM. $\pm .004$	SIZES AND MANUFACTURERS		
		TOLERANCES ARE NOT INCLUDED.		

1	A-1397	3BE-1,2	8-27-58
REQ PER UNIT	MODEL	PROJECT NO.	DATE
		ASS'Y. NO.	

REF: LD-357(8) Lettering

REQ. ITEM	PART NO.	DESCRIPTION	SYMBOL
	.081 THK.	THE TECHNICAL MATERIEL CORP.	
	STOCK SIZE	MAMARONECK, NEW YORK	
	Aluminum	CHASSIS, POWER SUPPLY	
	MATERIAL	WEIGHT PER PC.	
	5052-H32		
	TYPE & TEMPER	14 9/27/58	
	RE-DRAWN	ELEC. DES. APP.	
		CHECKED	
	HEAT TREAT. SPEC.		
	FINISH & SPEC. NO.		

MS-1114 F