

IF IT IS FOUND DESIRABLE TO CHANGE ANY TOLERANCE OR OTHER DETAIL SPECIFIED ON THIS DRAWING NOTIFY THE PURCHASER PROMPTLY.
 MAXIMUM ALLOWABLE TOLERANCES HAVE BEEN DETERMINED AND DEVIATIONS WILL BE CAUSE FOR REJECTION.
 REMOVE ALL BURRS AND SHARP EDGES

F-5/16 (.312) DIA. HOLES 3 REQ

NOTICE TO PERSONS RECEIVING THIS DRAWING

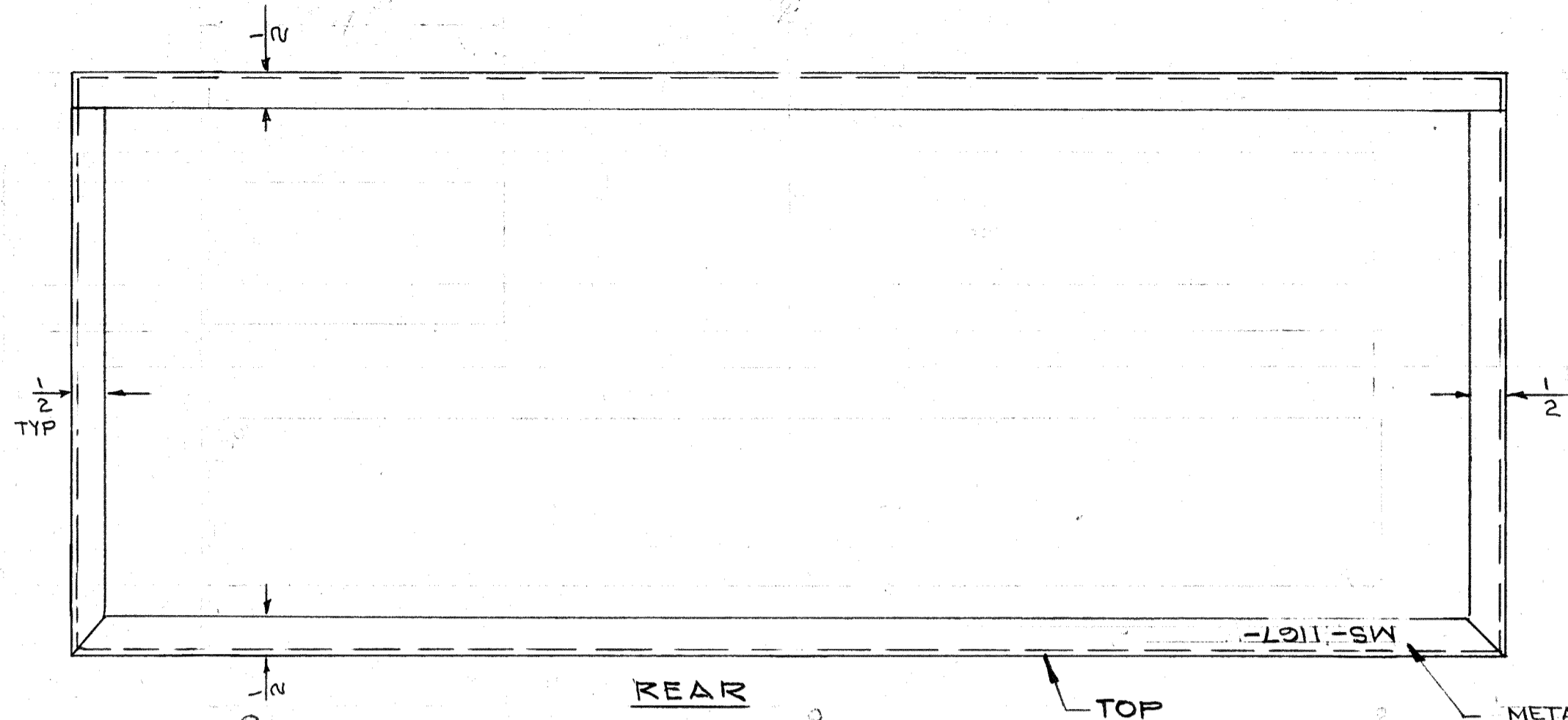
THE TECHNICAL MATERIEL CORPORATION claims proprietary right in the material disclosed herein. This drawing is issued in confidence for engineering information only and may not be reproduced or used to manufacture anything shown hereon without permission from THE TECHNICAL MATERIEL CORPORATION to the user. This drawing is loaned for mutual assistance and is subject to recall at any time.

Property of:
 THE TECHNICAL MATERIEL CORPORATION
 MAMARONECK, NEW YORK

MATERIAL
 STEEL, MILD COLD ROLLED .047 (18 GA).
 METAL TO BE FREE OF ALL SURFACE IMPERFECTIONS.

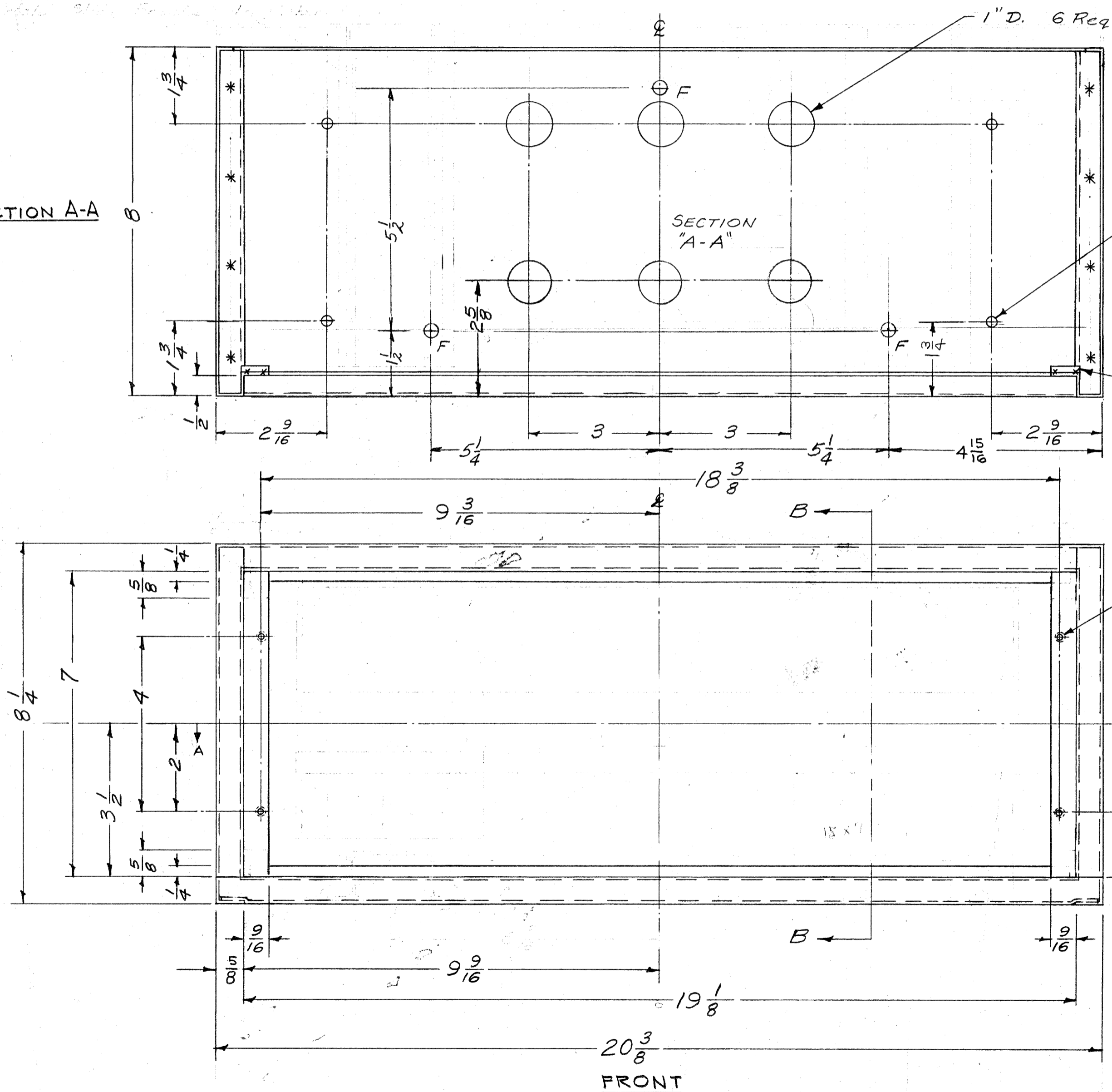
FINISH
 S-371 DEGREASING FOR STEEL.
 S-114 ZINC CHROMATE PRIMER.
 S-520 BLUE GRAY TEXTURED VINYL.
 OR
 PRIME & PAINT AS PER CUSTOMER SPEC.

MANUFACTURING PROCESS
 FRONT OPENINGS SHOULD BE WITHIN $\pm 1/64$ SQUARE OF CABINET SHOULD BE WITHIN 0.5° . AS MANY SPOTWELDS AS PRACTICAL FOR MAXIMUM STRENGTH & DEPENDABILITY.



METAL STAMP TMC PART NO. 1/8" HIGH GOTHIC W/LATEST REV. LETTER.

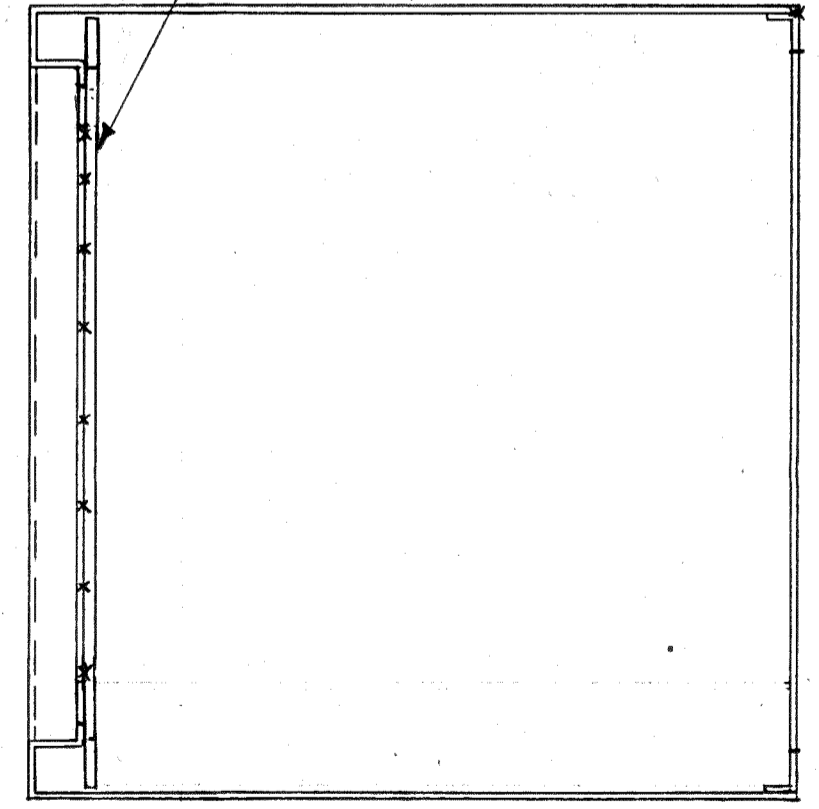
SECTION A-A



1" D. 6 Req.

Spotweld Reinforcing strips of #12 Gauge Steel for tapping thickness. (2 Req.)

Drill & Tap 10-32, Cl. 2 Threads 4 Req.



SECTION B-B

ISSUE/ITEM	CHANGED FROM	DATE	CH. NO.	DRAFTS	CHECKER	ENG. APP.
G	TWO 2" DIM. DELETED	2-7-54	15498	102	AS	AS
A	CONSTRUCTION REVISED					
F	IN SECTION A-A 2" DIM. ADDED	6-7-53	5192		WJ	WJ
E	IN FRONT 2" DIM. TO 3 1/2" 5/8" ADDED					
D	FINISH WAS S-520 ENAMEL					
C	DRILL & TAP FOR 10-32 WAS B-32	5-25-52	6608	VRR	WJ	WJ
B	ADDED 3 1/2" HOLES	5-19-52		MC	WJ	WJ
A	REAR CUTOUTS DELETED	5-19-52		MC	WJ	WJ
	FINISH WAS S-270 & S-54	11-16-52		WJ	WJ	WJ
	REAR GREY 5001 & VINYL					
	MTG. LIPS EXTENDED	1-3-53		WJ	WJ	WJ

TOLERANCES
 DEC. DIM. \pm
 FRAC. DIM. \pm
 ANGULAR DIM. \pm

SCALE: 8-1177

DRILL, PUNCH, COMMERCIAL STOCK SIZES AND MANUFACTURERS TOLERANCES ARE NOT INCLUDED.

REQ. PER UNIT	MODEL	PROJECT NO.	ASSY. NO.	DATE
1	ATSMCU-2			7-8-53
1	SWR-3000RM			5-7-53
1	ATS-MC			11-4-57

REQ. ITEM	PART NO.	DESCRIPTION	SYMBOL
	.047 (18 GA)	THE TECHNICAL MATERIEL CORP. MAMARONECK, NEW YORK	
	STEEL	CABINET, CONTROL	
	COLD ROLLED	MONITOR	
	TYPE & TEMPER	1611-4-57	
	HEAT TREAT. SPEC.	DRAWN	ENG. DES. APP.
	FINISH & SPEC. NO.	CHECKED	FINAL APPROVAL

MS-167 G