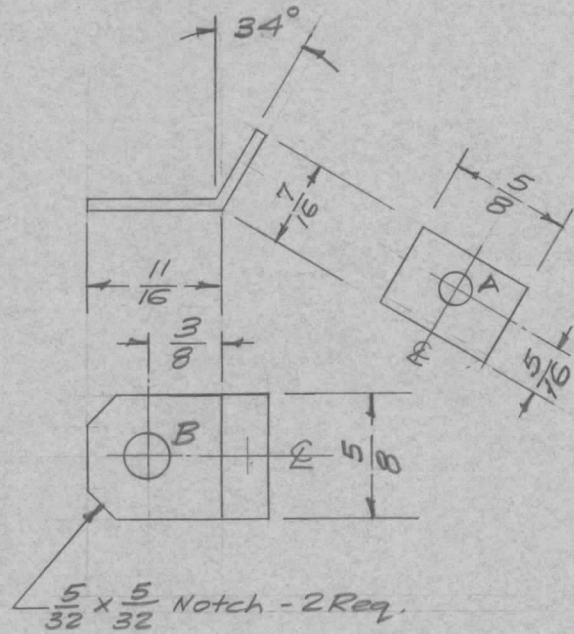


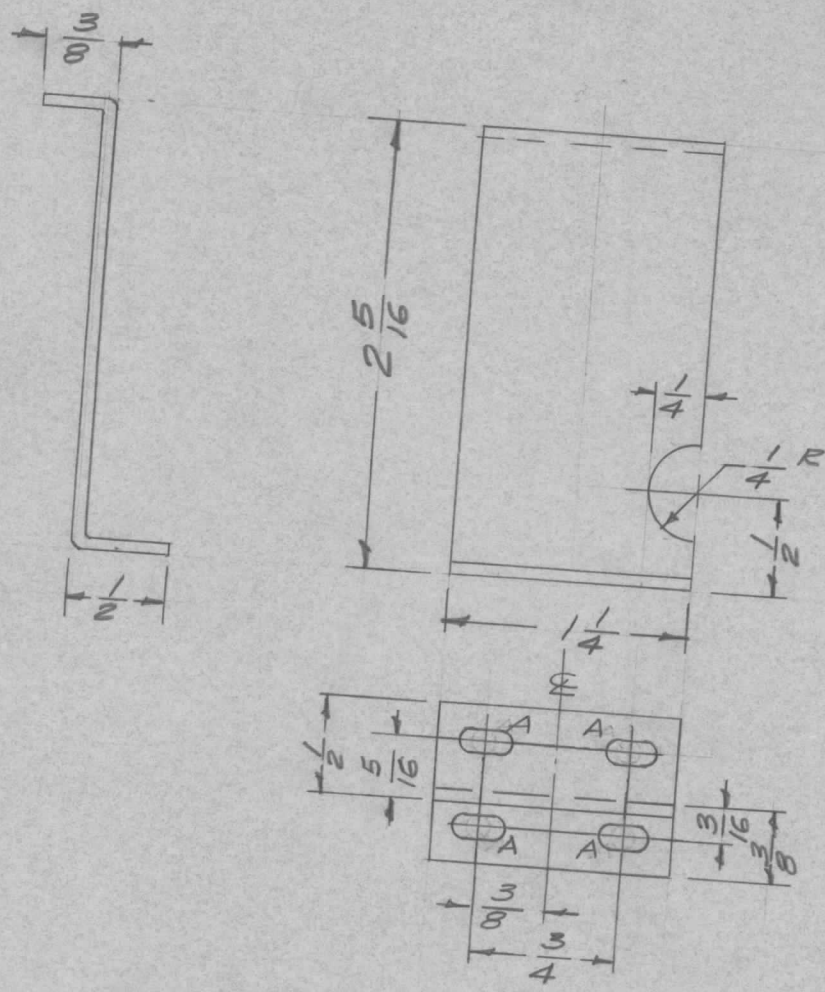
REQ. PER UNIT	USED ON			MS-1243	B
	MODEL	ASS'Y. NO.	DATE		
4	RFA-1		5-9-58		



A - 1/64 (.171) D. 1 Req.  
 B - 1/4 (.250) D. 1 Req.

REQ.	ITEM	PART NO.	DESCRIPTION				SYMBOL
			THE TECHNICAL MATERIEL CORP. MAMARONECK, NEW YORK				
			BRACKET, TRANSFORMER, MTG., PA BAND SW.				
B	1	5404-YEL IRIDITE WAS S/01-CAUSTIC D/P	12-8 59	1001	P	EMN	
A	1	B Hole WAS 15/64 D, NOW 1/4 D	7/1/58	404	16	file	DN
ISSUE	ITEM	CHANGED FROM	DATE	CH. NO.	DRAFTS	CHECKER	ENG. APP.
TOLERANCES			SCALE: FULL				
DEC. DIM. ±			MAXIMUM ALLOWABLE TOLERANCES HAVE BEEN DETERMINED AND ANY DEVIATIONS WILL BE CAUSE FOR REJECTION.				
FRAC. DIM. ± 1/64			REMOVE ALL BURRS AND SHARP EDGES				
ANGULAR DIM. ± 1°							
5052-H32		N	16 5/16	58	file	DN	
TYPE & TEMPER		HEAT TREAT. SPEC.	DRAWN		CHECKED		FINAL APPROVAL
5404-YEL-IRIDITE			REB				MS-1243 B
FINISH & SPEC. NO.		ELEC. DES. APP.	MECH. DES. APP.				

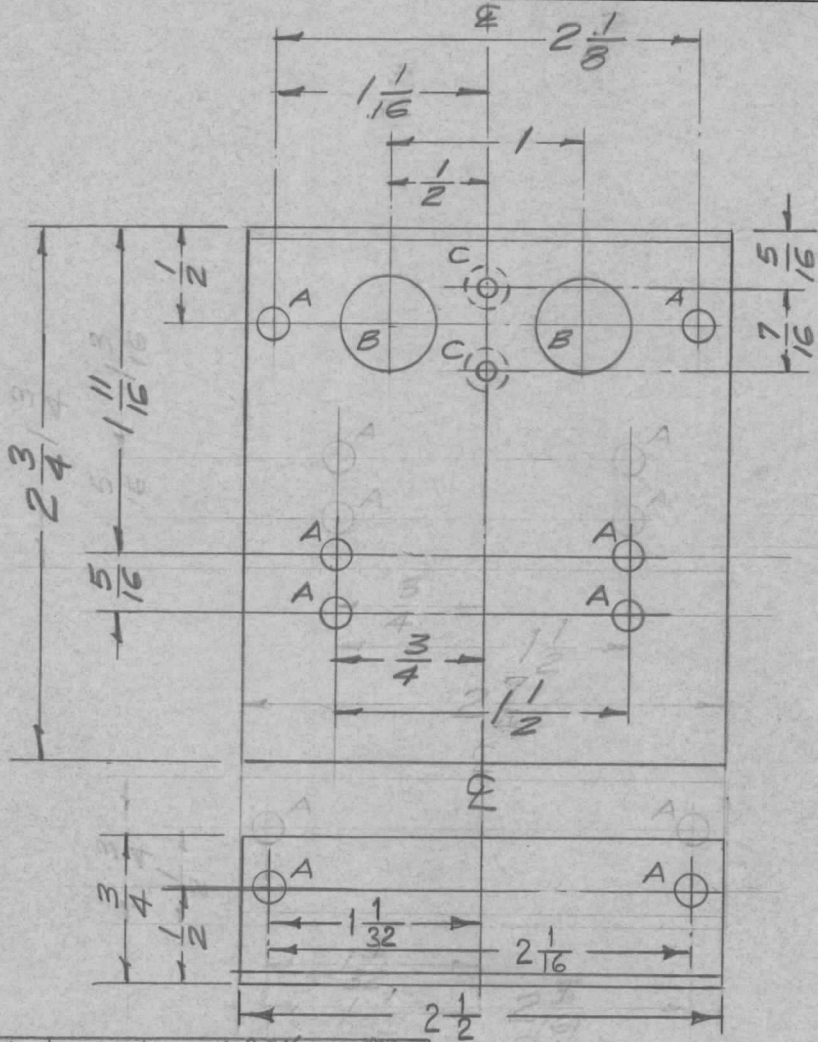
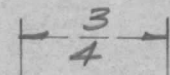
REQ. PER UNIT	USED ON		
	MODEL	ASS'Y. NO.	DATE
1	RFA-1		5-12-58
			MS-1244



A - 1/8 x 1/4 slot 4 Req.

ISSUE	ITEM	CHANGED FROM	DATE	CH. NO.	DRAFTS	CHECKER	ENG. APP.	REQ. ITEM	PART NO.	DESCRIPTION	SYMBOL	
B	1	5404-YEL-IRIDITE 5101-CAUSTIC DIP	12-8 59	1001	P		EMN	.064 THK.		THE TECHNICAL MATERIEL CORP. MAMARONECK, NEW YORK		
A	1	A Holes Were 1/8 D.	7/1/58	404	16	Jde	Jde	STOCK SIZE		BRACKET, CONNECTOR MTS.		
TOLERANCES								MATERIAL				
DEC. DIM. ±			SCALE: FULL					5252-H32		16 5/12/58		Jde
FRAC. DIM. ± 1/64			MAXIMUM ALLOWABLE TOLERANCES HAVE BEEN DETERMINED AND ANY DEVIATIONS WILL BE CAUSE FOR REJECTION. REMOVE ALL BURRS AND SHARP EDGES					TYPE & TEMPER		DRAWN		Jde
ANGULAR DIM. ±								HEAT TREAT. SPEC.		CHECKED		FINAL APPROVAL
								FINISH & SPEC. NO.		ELEC. DES. APP. MECH. DES. APP.		MS-1244 B
								S404-YEL-IRIDITE				RFB

REQ. PER UNIT	USED ON			MS-1246	E
	MODEL	ASSY. NO.	DATE		
1	RFA-1		5-13-58		



- A - 1/64 (.171) D. 8 Req.
- B - 1/2 (.500) D. 2 Req.
- C - Drill & C'sink for 3-48 FHS 2 Req.

Ref: 1 LD-425

E	1	0/A DIM. 2 1/2 ADDED	2-7-61	4082	WAF	gob	RR
D	1	S404-YEL-IRIDITE 5/01-CAUSTIC DIP	12-8	1001	P		EMM
C	1	2-3/4 OA WAS 1-3/4 1-11/16 WAS 1-3/16 "C" HOLES ADDED	7/1/58	404	16		
B	1	2 1/16 WAS 2 3/16 2 1/8 WAS 2 3/16	6/4/58	2	16		
A	1	2 7/16 (OA) WAS 2-1/2	5/16/58	1	16		

ISSUE	ITEM	CHANGED FROM	DATE	CH. NO.	DRAFTS	CHECKER	ENG. APP.
TOLERANCES			SCALE: $\frac{1}{1}$				
DEC. DIM. $\pm$			MAXIMUM ALLOWABLE TOLERANCES HAVE BEEN DETERMINED AND ANY DEVIATIONS WILL BE CAUSE FOR REJECTION. REMOVE ALL BURRS AND SHARP EDGES				
FRAC. DIM. $\pm$ 1/64							
ANGULAR DIM. $\pm$							

REQ. ITEM	PART NO.	DESCRIPTION	SYMBOL
		THE TECHNICAL MATERIEL CORP. MAMARONECK, NEW YORK	
	.064 THK.	BRACKET, TERMINAL STRIP MOUNTING	
	STOCK SIZE		
	ALUMINUM		
MATERIAL			
5052-H32	— H —	16 5/13/58	Jude
TYPE & TEMPER	HEAT TREAT. SPEC.	DRAWN	CHECKED
S404 YEL. IRIDITE		RFB	
FINISH & SPEC. NO.	ELEC. DES. APP.	MECH. DES. APP.	
			MS-1246 E