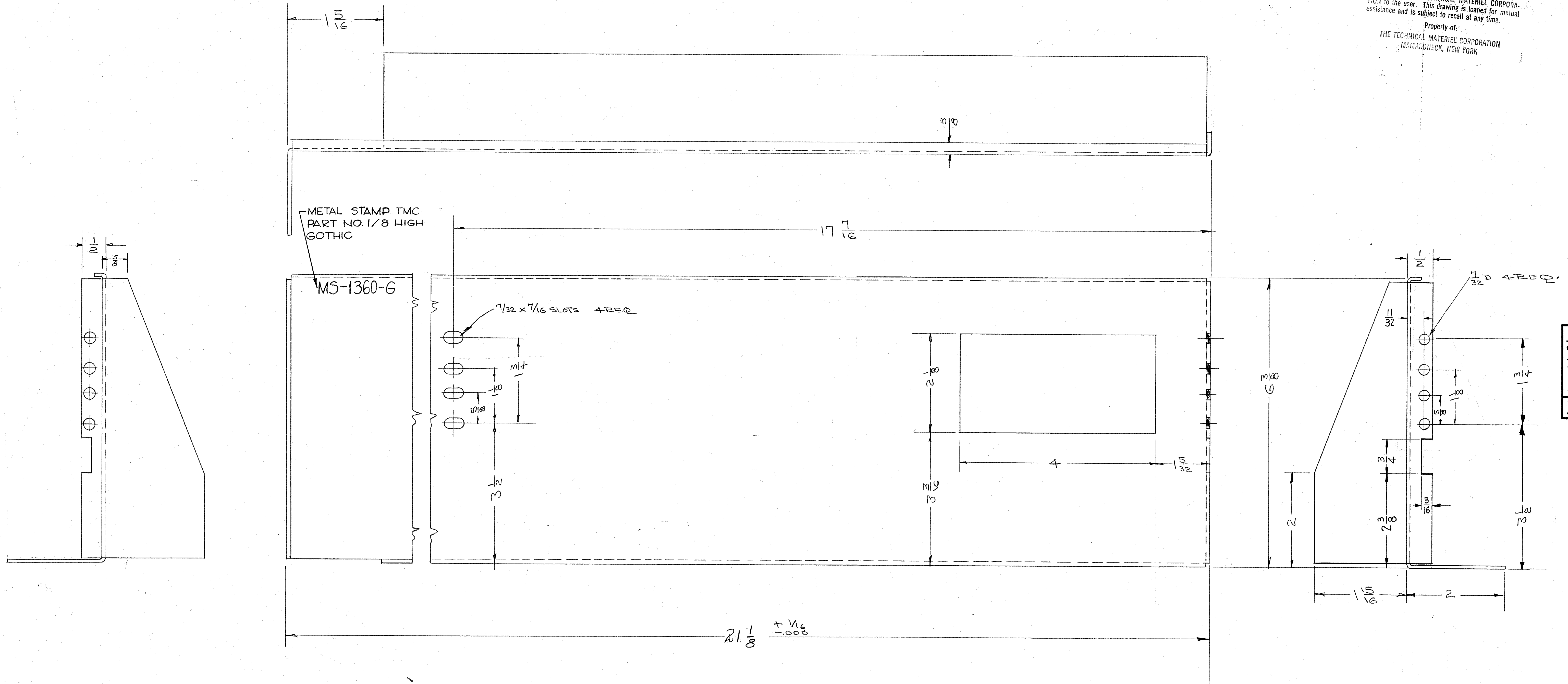


IF IT IS FOUND DESIRABLE TO CHANGE ANY TOLERANCE OR OTHER DETAIL SPECIFIED ON THIS DRAWING NOTIFY THE PURCHASER PROMPTLY.
 MAXIMUM ALLOWABLE TOLERANCES HAVE BEEN DETERMINED AND DEVIATIONS WILL BE CAUSE FOR REJECTION.
 REMOVE ALL BURRS AND SHARP EDGES

NOTICE TO PERSONS RECEIVING THIS DRAWING
 THE TECHNICAL MATERIEL CORPORATION claims proprietary right in the material disclosed herein. This drawing is issued in confidence for engineering information only and may not be reproduced or used to manufacture anything shown hereon without permission from THE TECHNICAL MATERIEL CORPORATION to the user. This drawing is loaned for mutual assistance and is subject to recall at any time.
 Property of:
 THE TECHNICAL MATERIEL CORPORATION
 MAMARONECK, NEW YORK



K	SEE SHIT. 7	6222	3710	GE	ES	ES	
N	SEE SHEET 1 OF 12	3-9-66	15893	NEW	GP		
H	SEE SHEET 11 OF 12	21543	8242				
G	3/4 x 3/16 Notch Added	11-15-61	5801	RL			
E	Revision Letter Clarified	1/31/61	4019	DM			
D	Pictorial Clarified	1/16/58					
A	DIM. CHG. 3/8 W x 3/16	11/11/53					
ISSUE	ITEM	CHANGED FROM	DATE	CH. NO.	DRAFTS	CHECKER	ENG. APP.
TOLERANCES				SCALE: CPO			
ALL OTHERS	DEC. DIM. ± SEE S-396		DRILL, PUNCH, COMMERCIAL STOCK SIZES AND MANUFACTURERS TOLERANCES ARE NOT INCLUDED.				

1	CAB-7			8-25-58
REQ PER UNIT	MODEL	PROJECT NO.	ABBY. NO.	DATE

HEAT TREAT. SPEC.	CHECKED	FINAL APPROVAL

FINISH & SPEC. NO.	SHEET 12 OF 12	MS-1360 K
--------------------	----------------	-----------