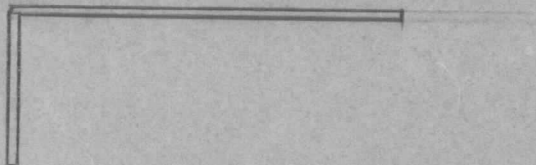
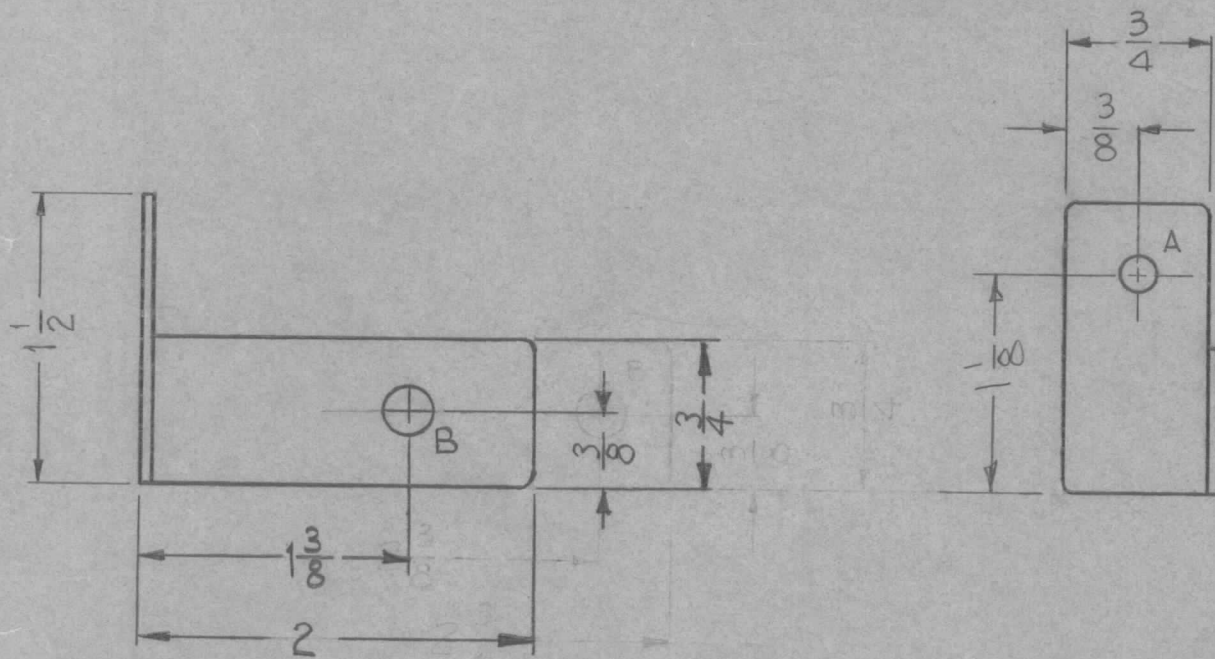


REQ. PER UNIT	USED ON			MS-1600	A
	MODEL	ASS'Y. NO.	DATE		
1	GPT-10K	AX-137	2-20-59		



A ~ # 11 Df (.191) DIA.  
 B ~ 1/4 (.250) DIA.

1 Req.  
 1 Req.



NOTE ~ BREAK ALL CORNERS  
 1/8 RADIUS.

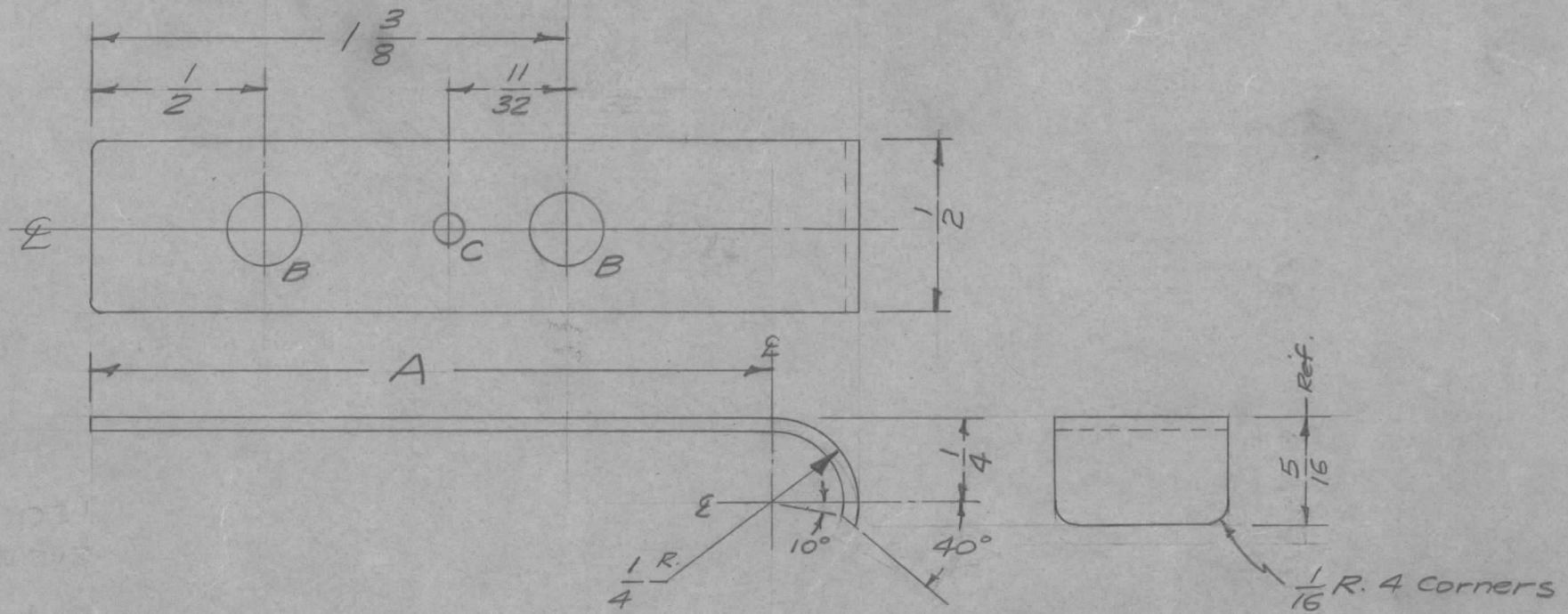
UNLESS OTHERWISE SPECIFIED DIMENSIONS ARE IN INCHES AND INCLUDE CHEMICALLY APPLIED OR PLATED FINISHES	
DECIMALS	FRACTIONS
.X ± .05	± 1/64
.XX ± .01	ANGLES
.XXX ± .005	± 0° 30'

CUT HERE  
 GUARANTEED  
 2-66

Ref-ILD-558

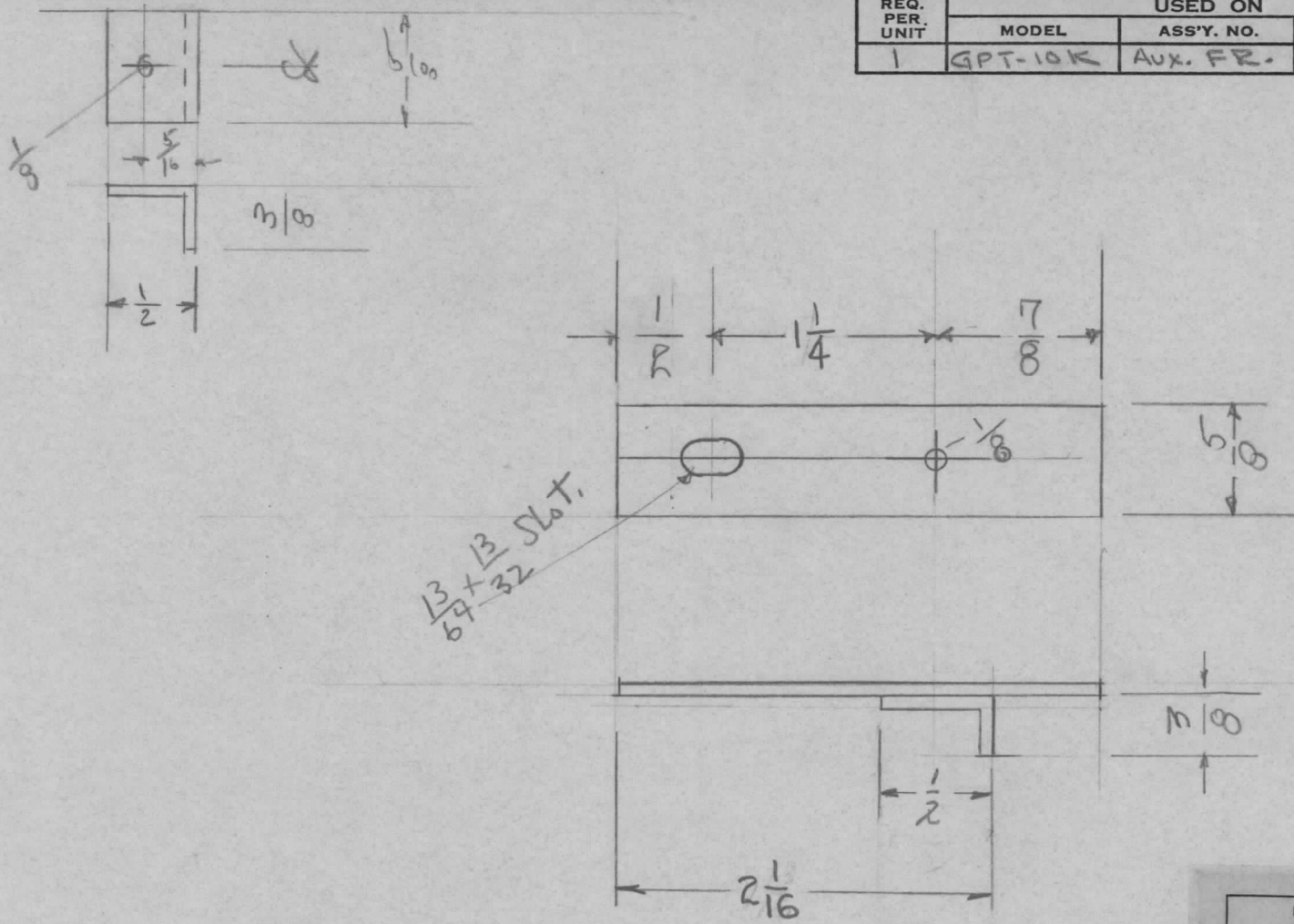
REQ.	ITEM	PART NO.	DESCRIPTION				SYMBOL
		.064	THE TECHNICAL MATERIEL CORP.				
		STOCK SIZE	MAMARONECK, NEW YORK				
A	2	1 3/8 DIM WAS 2 3/8	BRACKET, CHOKE SUPPORT				
	1	2" DIM. WAS 2 3/4					
ISSUE	ITEM	CHANGED FROM	DATE	CH. NO.	DRAFTS	CHECKER	ENG. APP.
TOLERANCES			SCALE:				
DEC. DIM. ±			MAXIMUM ALLOWABLE TOLERANCES HAVE BEEN DETERMINED AND ANY DEVIATIONS WILL BE CAUSE FOR REJECTION: REMOVE ALL BURRS AND SHARP EDGES				
FRAC. DIM. ± 1/64							
ANGULAR DIM. ±							
5052-H32		J.C. BIELE	DRAWN		CHECKED		FINAL APPROVAL
S-404 IRIDITE		J.P.					MS-1600
FINISH & SPEC. NO.		ELEC. DES. APP.	MECH. DES. APP.		A		

TMC NO.	DIM. A	HOLE DIAM. "B" (2 Req.)	HOLE DIAM. "C"	REQ. PER UNIT	USED ON			MS-1602
					MODEL	ASS'Y. NO.	DATE	
MS-1602-1	3.125	.203	.109	2	GPT 10000			



ISSUE	ITEM	CHANGED FROM	DATE	CH. NO.	DRAFTS	CHECKER	ENG. APP.	REQ.	ITEM	PART NO.	DESCRIPTION	SYMBOL					
										.040 Thk	THE TECHNICAL MATERIEL CORP.						
										STOCK SIZE	MAMARONECK, NEW YORK						
										BERYLLIUM COPPER	SPRING, SWITCH CONTACT						
										MATERIAL							
										SPRING TEMPER	16 1/8/58	ARB					
TOLERANCES			SCALE: <del>1/16</del>		1-1310												
DEC. DIM. ± .005			MAXIMUM ALLOWABLE TOLERANCES HAVE BEEN DETERMINED AND ANY DEVIATIONS WILL BE CAUSE FOR REJECTION. REMOVE ALL BURRS AND SHARP EDGES					TYPE & TEMPER		HEATTREAT. SPEC.		DRAWN		CHECKED		FINAL APPROVAL	
FRAC. DIM. ± 1/64								.0005 Silver Plate		.000025 Rhodium Plate		FINISH & SPEC. NO.		ELEC. DES. APP		MECH. DES. APP	
ANGULAR DIM. ± 2°																	

REQ. PER. UNIT	USED ON			MS-1609	B
	MODEL	ASS'Y. NO.	DATE		
1	GPT-10K	Aux. FR.	2/25/59		



UNLESS OTHERWISE SPECIFIED  
DIMENSIONS ARE IN INCHES AND INCLUDE  
CHEMICALLY APPLIED OR PLATED FINISHES

DECIMALS	FRACTIONS
.X ± .05	± 1/64
.XX ± .01	ANGLES
.XXX ± .005	± 0° 30'

CUT HERE  
GUARANTEED  
2-66

REQ.	ITEM	PART NO.	DESCRIPTION			SYMBOL
		064	THE TECHNICAL MATERIEL CORP.			
		STOCK SIZE	MAMARONECK, NEW YORK			
		Aluminum	RETAINER, FILTER			
		MATERIAL				
		5052-H32	alm	HR	AK	
		TYPE & TEMPER	DRAWN	CHECKED	FINAL APPROVAL	
		HEATTREAT.SPEC.			MS 1609 B	
		FINISH & SPEC. NO.	ELEC. DES. APP	MECH. DES. APP		

B  $2\frac{1}{16}$  WAS  $1\frac{13}{16}$ ,  $1\frac{1}{4}$  WAS 1 7-2-62 6856 R.T. HQ [Signature]

A 1 DWG REINSTATE WAS OBS. 8/9/60 2731 RU JCB [Signature]

ISSUE ITEM CHANGED FROM DATE CH. NO. DRAFTS CHECKER ENG. APP.

TOLERANCES SCALE:

DEC. DIM. ±  
FRAC. DIM. ±  
ANGULAR DIM. ±

MAXIMUM ALLOWABLE TOLERANCES HAVE BEEN DETERMINED AND ANY DEVIATIONS WILL BE CAUSE FOR REJECTION. REMOVE ALL BURRS AND SHARP EDGES

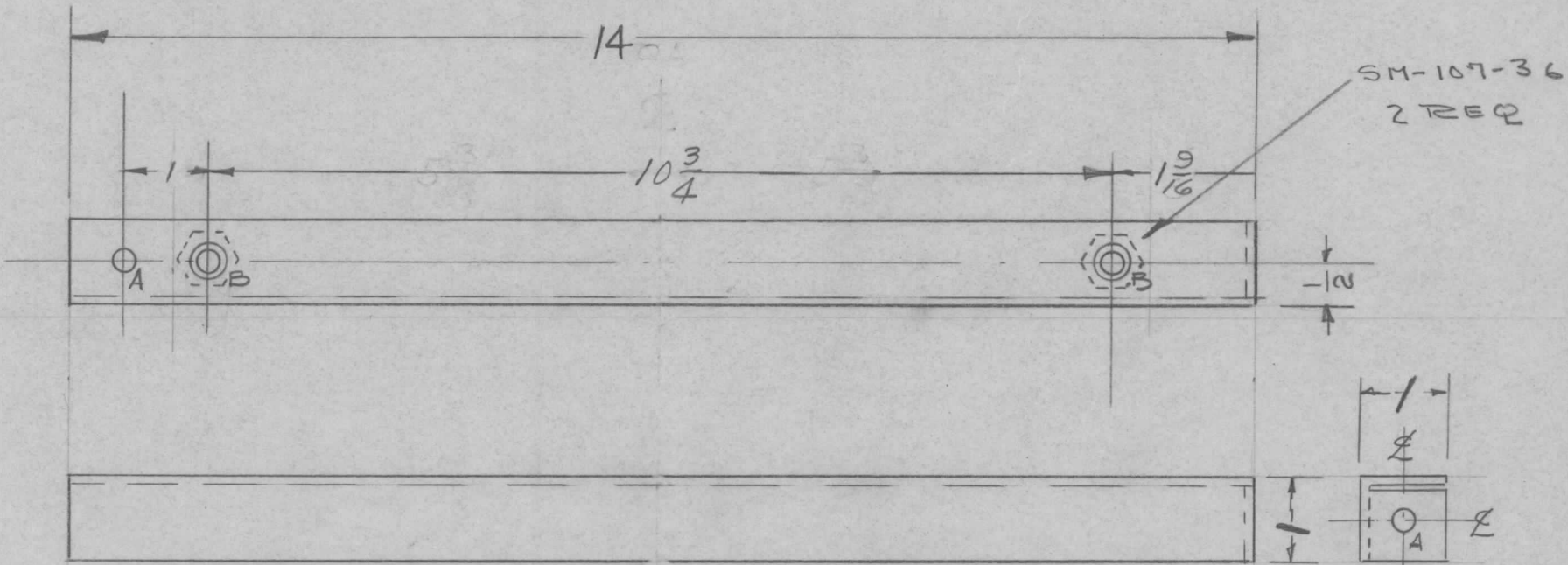


UNLESS OTHERWISE SPECIFIED  
DIMENSIONS ARE IN INCHES AND INCLUDE  
CHEMICALLY APPLIED OR PLATED FINISHES

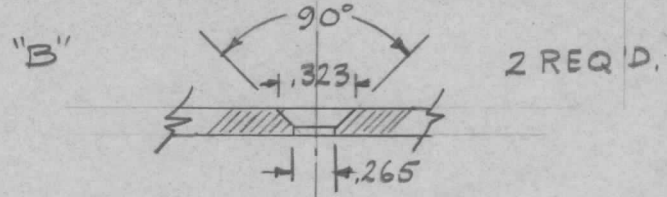
DECIMALS	TOLERANCES	FRACTIONS
.X ± .05		± 1/64
.XX ± .01		ANGLES
.XXX ± .005		± 0° 30'

CUT HERE  
GUARANTEED  
2-66

REQ. PER. UNIT	USED ON			MS-1620	A
	MODEL	ASS'Y. NO.	DATE		
1	GPT-10K	P.S.	2-26-59		



A - 1/64 DIA 2 REQ'D.



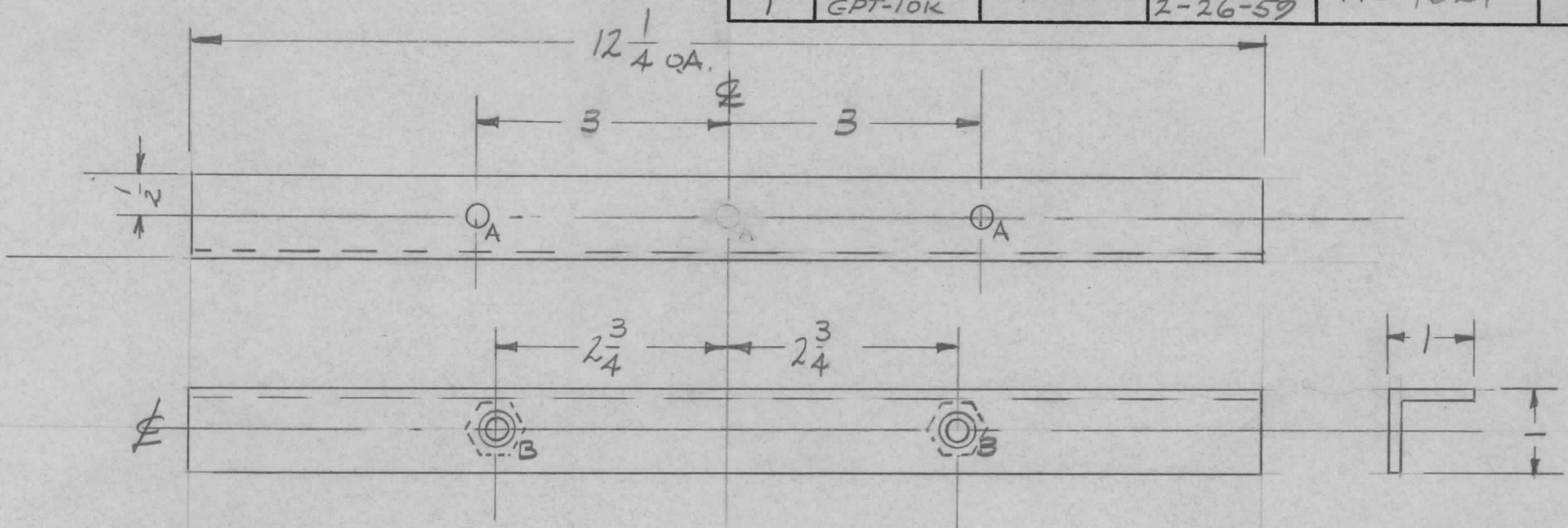
NOTE: ALL BENDS 1/8 R.

REQ.	ITEM	PART NO.	DESCRIPTION				SYMBOL
		1/8 THICK STOCK SIZE	THE TECHNICAL MATERIEL CORP. MAMARONECK, NEW YORK				
		ALUMINUM	FRONT SUPPORT, WRAPAROUND LINE FILTER				GPT-10K
		5052-H32	TORILLO	Jde	APB		
		S404 IRIDITE	J.D.	2B			
		FINISH & SPEC. NO.	ELEC. DES. APP	MECH. DES. APP	MS-1620	A	

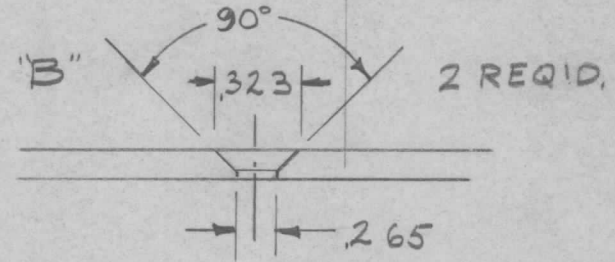


REQ. PER. UNIT	USED ON		
	MODEL	ASS'Y. NO.	DATE
1	GPT-10K		2-26-59

MS-1621



A -  $\frac{11}{64}$  DIA. 2 REQ'D.



SM-107-3-6

UNLESS OTHERWISE SPECIFIED DIMENSIONS ARE IN INCHES AND INCLUDE CHEMICALLY APPLIED OR PLATED FINISHES	
DECIMALS .X ± .05 .XX ± .01 .XXX ± .005	FRACTIONS TOLERANCES ± 1/64 ANGLES ± 0° 30'

CUT HERE  
GUARANTEED  
2-66

NOTE:  $\frac{1}{8}$  R BEND'S

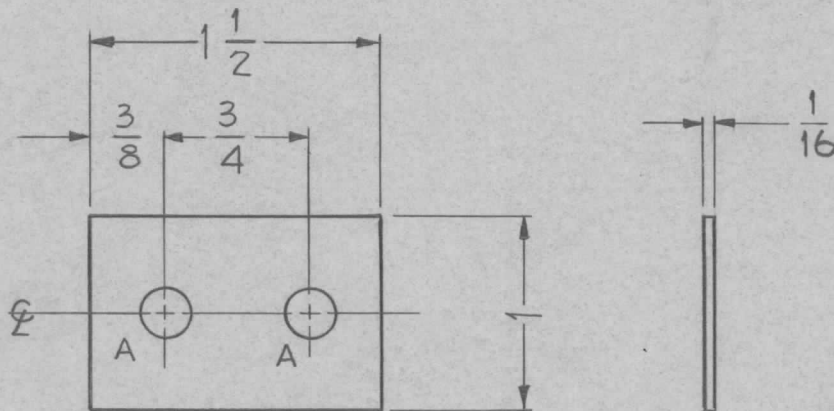
REQ.	ITEM	PART NO.	DESCRIPTION				SYMBOL
		$\frac{1}{8}$ THICK	THE TECHNICAL MATERIEL CORP.				
		STOCK SIZE	MAMARONECK, NEW YORK				
		ALUMINUM	REAR SUPPORT, WRAPAROUND				
		MATERIAL	LINE FILTER				GPT-10K
ISSUE	ITEM	CHANGED FROM	DATE	CH. NO.	DRAFTS	CHECKER	ENG. APP.
TOLERANCES			SCALE:				
DEC. DIM. ±			MAXIMUM ALLOWABLE TOLERANCES HAVE BEEN DETERMINED AND ANY DEVIATIONS WILL BE CAUSE FOR REJECTION.				
FRAC. DIM. ±			REMOVE ALL BURRS AND SHARP EDGES				
ANGULAR DIM. ±							
5052-H32		TYPE & TEMPER		HEATTREAT. SPEC.		DRAWN	
S404 IRIDITE		FINISH & SPEC. NO.		ELEC. DES. APP		MECH. DES. APP	
		TOKIHO		Hile		ARB	
		J.D.		SJR		MS-1621	

REQ. PER. UNIT	USED ON		
	MODEL	ASS'Y. NO.	DATE
10	GPT 10K	POW./ASS'Y	2-26-59

MS-1622

A - 1/4 (.250) DIA.

2 Req.



UNLESS OTHERWISE SPECIFIED  
DIMENSIONS ARE IN INCHES AND INCLUDE  
CHEMICALLY APPLIED OR PLATED FINISHES

DECIMALS	FRACTIONS
.X ± .05	± 1/64
.XX ± .01	ANGLES
.XXX ± .005	± 0° 30'

TOLERANCES

CUT HERE  
GUARANTEED  
2-66

REQ.	ITEM	PART NO.	DESCRIPTION	SYMBOL
		.064	THE TECHNICAL MATERIEL CORP.	
		STOCK SIZE	MAMARONECK, NEW YORK	
		BRASS	TERMINAL STRIP, MOUNTING BOARD	
		MATERIAL	LINE FILTER	GPT 10K
ISSUE	ITEM	CHANGED FROM	DATE	CH. NO.
TOLERANCES		SCALE:		
DEC. DIM. ±		MAXIMUM ALLOWABLE TOLERANCES HAVE BEEN DETERMINED AND ANY DEVIATIONS WILL BE CAUSE FOR REJECTION.		
FRAC. DIM. ±		REMOVE ALL BURRS AND SHARP EDGES		
ANGULAR DIM. ±				
		TYPE & TEMPER	HEATTREAT. SPEC.	DRAWN
				CHECKED
		FINISH & SPEC. NO.		ELEC. DES. APP
				MECH. DES. APP
				MS-1622

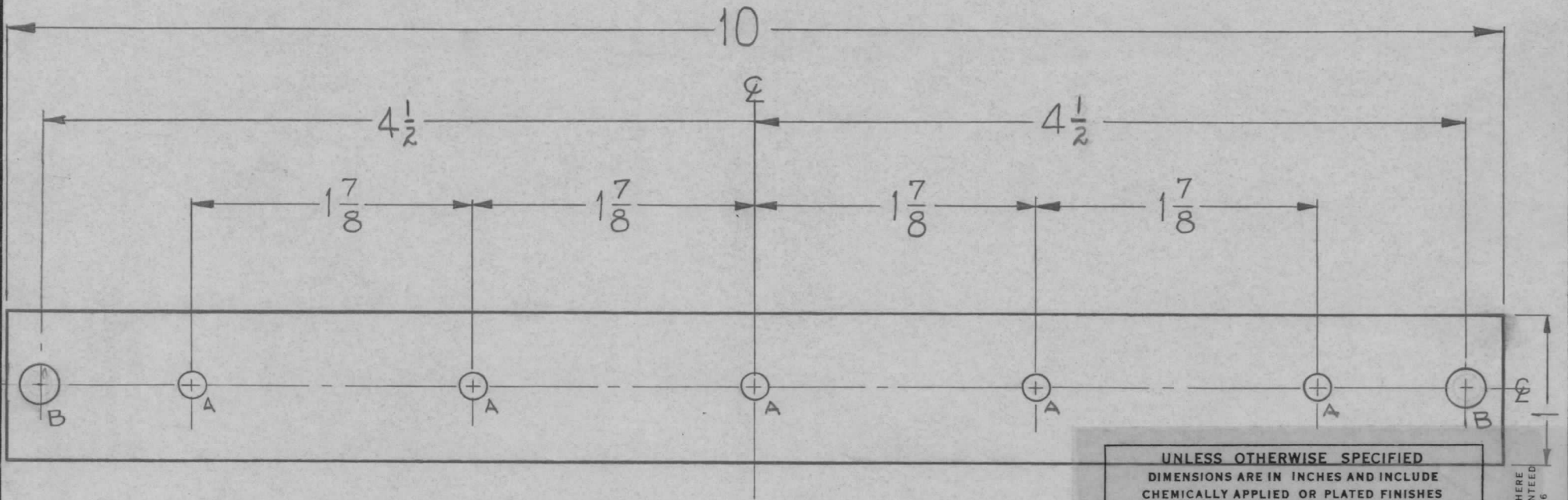
REQ. PER. UNIT	USED ON			MS-1623	0
	MODEL	ASS'Y. NO.	DATE		
1	GPT 10K	POW./ASS'Y	2-26-59		

A ~ 13/64 DIA. DIA.

5 Req.

B ~ 1/4 (.25) DIA.

2 "



UNLESS OTHERWISE SPECIFIED  
 DIMENSIONS ARE IN INCHES AND INCLUDE  
 CHEMICALLY APPLIED OR PLATED FINISHES

DECIMALS	FRACTIONS
.X ± .05	± 1/64
.XX ± .01	ANGLES
.XXX ± .005	± 0° 30'

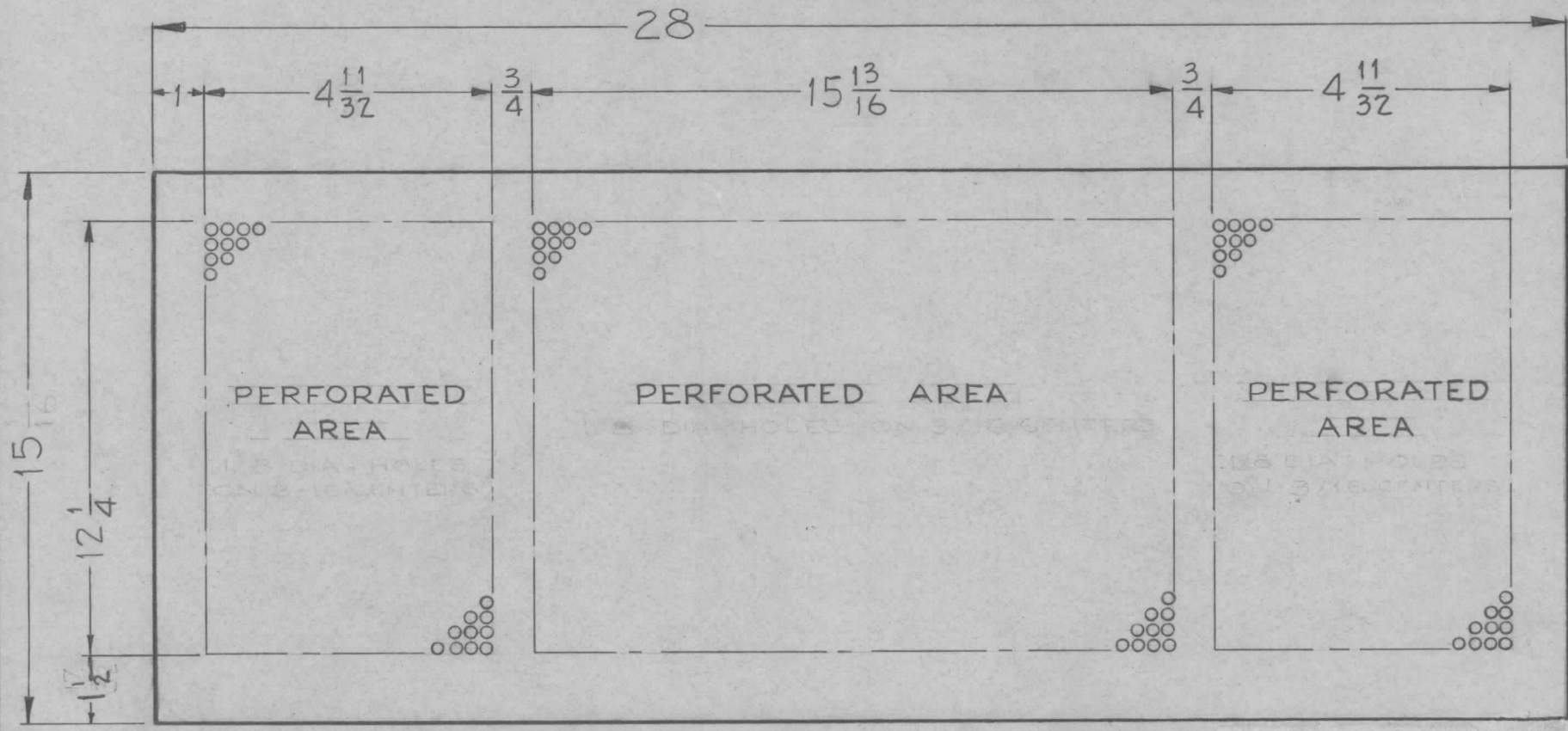
TOLERANCES

CUT HERE  
 GUARANTEED  
 2-66

REQ.	ITEM	PART NO.	DESCRIPTION				SYMBOL
C	1	.064	THE TECHNICAL MATERIEL CORP.				
B		STOCK SIZE	MAMARONECK, NEW YORK				
A		ALUMINUM COPPER	STRAP, GROUND, MOUNTING BOARD				
		MATERIAL	LINE FILTER				GPT 10K
ISSUE ITEM		CHANGED FROM	DATE	CH. NO.	DRAFTS	CHECKER	ENG. APP.
TOLERANCES		SCALE:					
DEC. DIM. ±		MAXIMUM ALLOWABLE TOLERANCES HAVE BEEN DETERMINED AND ANY DEVIATIONS WILL BE CAUSE FOR REJECTION.					
FRAC. DIM. ±		REMOVE ALL BURRS AND SHARP EDGES					
ANGULAR DIM. ±		TYPE & TEMPER		HEAT TREAT. SPEC.		DRAWN	
		FINISH & SPEC. NO.		ELEC. DES. APP.		MECH. DES. APP.	
				J.C. BIELE		MS-1623 C	



REQ. PER. UNIT	USED ON			MS-1630 $\emptyset$
	MODEL	ASS'Y. NO.	DATE	
1	GPT-10K	AX-104	2-27-59	



PERFORATED AREA ~ 1/8 DIA. HOLES ON 3/16 CENTERS

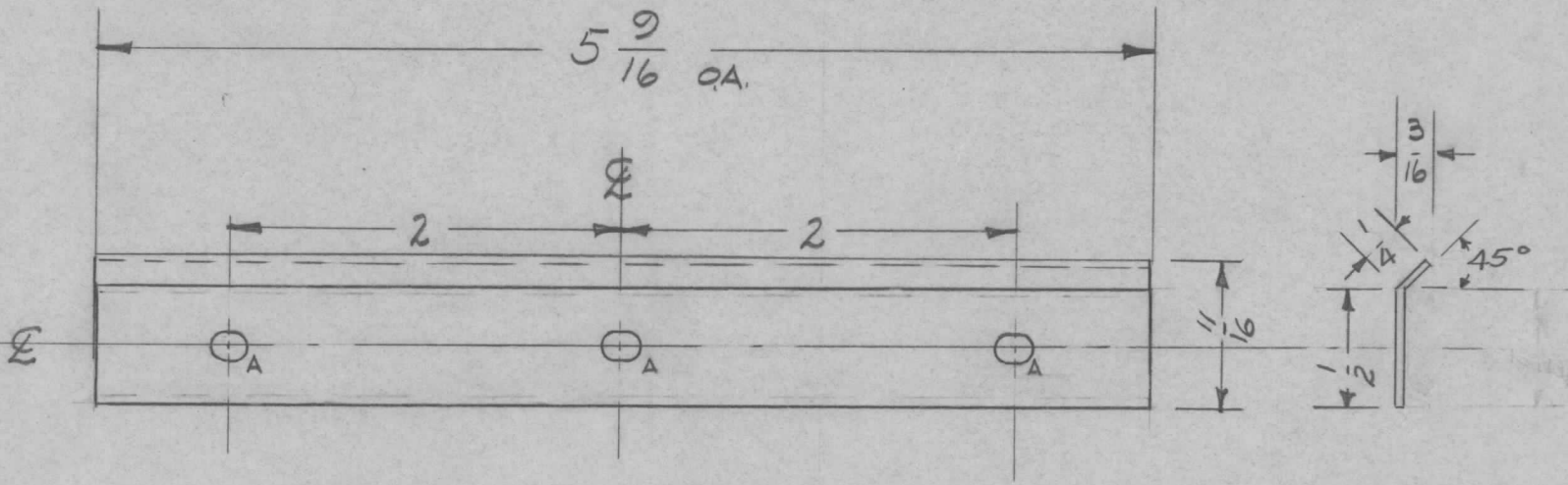
REF ~ TMC DWG NO. MS-1629

REQ.	ITEM	PART NO.	DESCRIPTION				SYMBOL
		.064	THE TECHNICAL MATERIEL CORP.				
		STOCK SIZE	MAMARONECK, NEW YORK				
		ALUMINUM	BLANK SIZE, COVER BOTTOM				
		MATERIAL	(DRIVER DRAWER)				
$\emptyset$	ORIGINAL RELEASE	7/15/69	CO				
ISSUE	ITEM	CHANGED FROM	DATE	CH. NO.	DRAFTS	CHECKER	ENG. APP.
TOLERANCES			SCALE: NOT TO SCALE				
DEC. DIM. $\pm$			MAXIMUM ALLOWABLE TOLERANCES HAVE BEEN DETERMINED AND ANY DEVIATIONS WILL BE CAUSE FOR REJECTION. REMOVE ALL BURRS AND SHARP EDGES				
FRAC. DIM. $\pm$ 1/64							
ANGULAR DIM. $\pm$							
5052-H32		TYPE & TEMPER	HEAT TREAT. SPEC.	J.C. BIELE	file	DB	7/15/69
FINISH & SPEC. NO.		ELEC. DES. APP	MECH. DES. APP	AVC	DB	MS-1630 $\emptyset$	
				DRAWN		CHECKED	
				DRAWN		FINAL APPROVAL	

A-  $\frac{5}{32} \times \frac{3}{16}$  SLOTS 3 REQ'D.

REQ. PER. UNIT	USED ON		
	MODEL	ASS'Y. NO.	DATE
4	GPT-10K		2-27-59

MS-1638 A



UNLESS OTHERWISE SPECIFIED  
DIMENSIONS ARE IN INCHES AND INCLUDE  
CHEMICALLY APPLIED OR PLATED FINISHES

DECIMALS	FRACTIONS
.X ± .05	± 1/64
.XX ± .01	ANGLES
.XXX ± .005	± 0° 30'

**TOLERANCES**

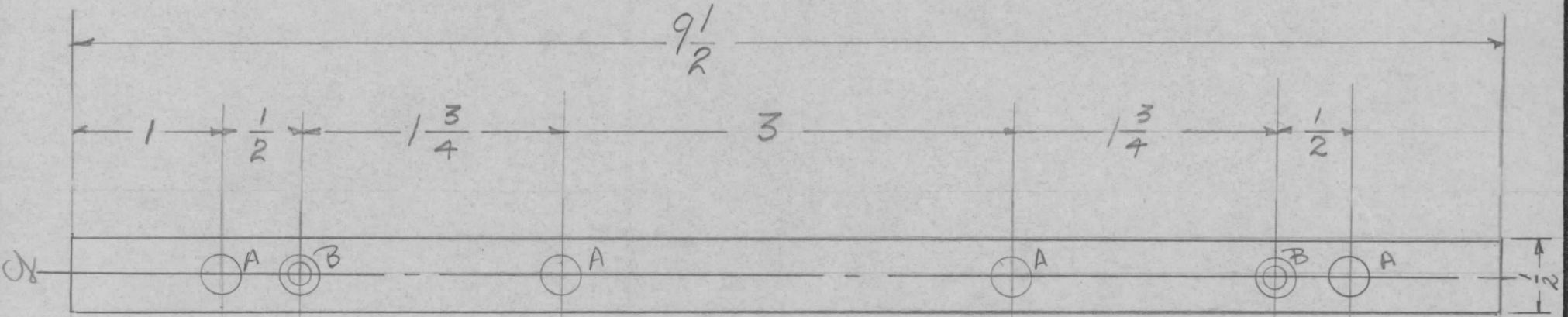
CUT HERE  
GUARANTEED  
2-66

							REQ. ITEM	PART NO.	DESCRIPTION	SYMBOL						
							1081 THICK		<b>THE TECHNICAL MATERIEL CORP.</b> MAMARONECK, NEW YORK							
							STOCK SIZE									
							ALUMINUM		FLANGE PLATE, BLOWER GPT-10K							
							MATERIAL									
A	1	FINISH ADDED	7-2-63	9427				5052-H32	<del>TORILLO</del>							
ISSUE	ITEM	CHANGED FROM	DATE	CH. NO.	DRAFTS	CHECKER	ENG. APP.	TYPE & TEMPER	HEAT TREAT. SPEC.	DRAWN	CHECKED	FINAL APPROVAL				
TOLERANCES			SCALE:					3404-YELLOW IRIDITE								
DEC. DIM. ±			MAXIMUM ALLOWABLE TOLERANCES HAVE BEEN DETERMINED AND ANY DEVIATIONS WILL BE CAUSE FOR REJECTION. REMOVE ALL BURRS AND SHARP EDGES													
FRAC. DIM. ±																
ANGULAR DIM. ±																
							FINISH & SPEC. NO.		ELEC. DES. APP.	MECH. DES. APP.		MS-1638 A				

UNLESS OTHERWISE SPECIFIED  
DIMENSIONS ARE IN INCHES AND INCLUDE  
CHEMICALLY APPLIED OR PLATED FINISHES

DECIMALS	TOLERANCES	FRACTIONS
.X ± .05		± 1/64
.XX ± .01		ANGLES
.XXX ± .005		± 0° 30'

REQ. PER. UNIT	USED ON			MS-1649
	MODEL	ASS'Y. NO.	DATE	
2	GPT-10K	ALU FRAME		

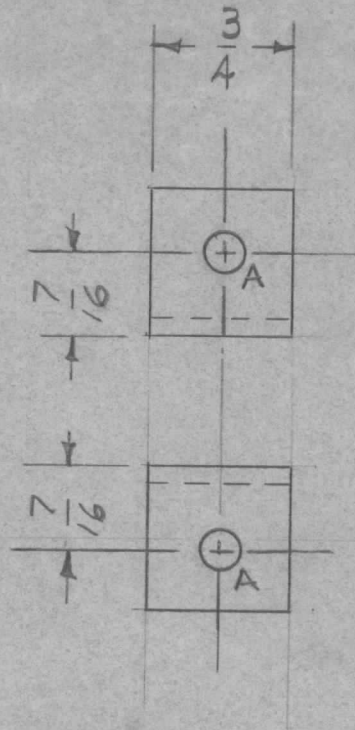


A -  $\frac{1}{4}$  (.250) 4 hole  
 B Drill & C'sink for 6/32  
 Finish TMC-Grey.

ISSUE	ITEM	CHANGED FROM	DATE	CH. NO.	DRAFTS	CHECKER	ENG. APP.	REQ. ITEM	PART NO.	DESCRIPTION	SYMBOL	
								.064		THE TECHNICAL MATERIEL CORP.		
								STOCK SIZE		MAMARONECK, NEW YORK		
								ALUMINUM		Shim - FRONT PANEL.		
								MATERIAL		SB12A		
								5052-H32		<i>[Signature]</i>		
								TYPE & TEMPER	HEATTREAT.SPEC.	DRAWN	CHECKED	FINAL APPROVAL
										<i>[Signature]</i>		
								FINISH & SPEC. NO.		ELEC. DES. APP	MECH. DES. APP	MS-1649

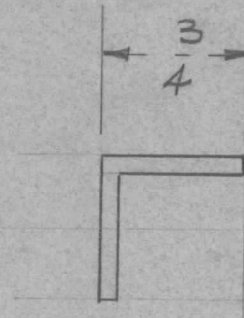


REQ. PER UNIT	USED ON		MS-1653	A
	MODEL	ASS'Y. NO.		
	GPT-10K		2-19-59	



A - 13/64 DIA.

2 REQ'D.



UNLESS OTHERWISE SPECIFIED  
DIMENSIONS ARE IN INCHES AND INCLUDE  
CHEMICALLY APPLIED OR PLATED FINISHES

DECIMALS	FRACTIONS
.X ± .05	± 1/64
.XX ± .01	ANGLES
.XXX ± .005	± 0° 30'

TOLERANCES

CUT HERE  
GUARANTEED  
2-66

REQ.	ITEM	PART NO.	DESCRIPTION				SYMBOL
		.081 THICK	THE TECHNICAL MATERIEL CORP.				
		STOCK SIZE	MAMARONECK, NEW YORK				
		ALUMINUM	BRACKET				
		MATERIAL	DECOUPLING CHOKE				
		5052-H32	10R1110	NO	2B MS		
		TYPE & TEMPER	HEAT TREAT. SPEC.	DRAWN	CHECKED	FINAL APPROVAL	
		IRIDITE		2B	2B	MS-1653	
		FINISH & SPEC. NO.	ELEC. DES. APP	MECH. DES. APP	MS-1653		
					A		

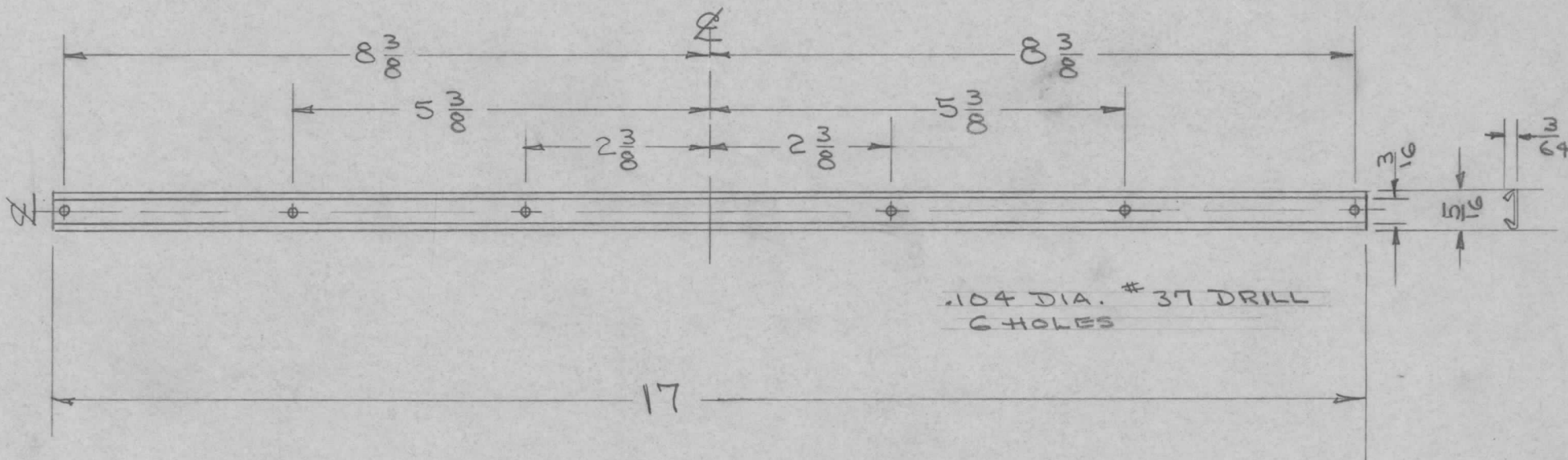
  

ISSUE	ITEM	CHANGED FROM	DATE	CH. NO.	DRAFTS	CHECKER	ENG. APP.
A	1	13/64 CLARIFIED	6-2 60	2411	1		2B

TOLERANCES		SCALE: FULL
DEC. DIM. ±	MAXIMUM ALLOWABLE TOLERANCES HAVE BEEN DETERMINED AND ANY DEVIATIONS WILL BE CAUSE FOR REJECTION.	
FRAC. DIM. ±	REMOVE ALL BURRS AND SHARP EDGES	
ANGULAR DIM. ±		

REQ. PER. UNIT	USED ON			MS-1656
	MODEL	ASS'Y. NO.	DATE	
1	SPP-1		3-6-59	



UNLESS OTHERWISE SPECIFIED  
DIMENSIONS ARE IN INCHES AND INCLUDE  
CHEMICALLY APPLIED OR PLATED FINISHES

DECIMALS	TOLERANCES	FRACTIONS
.X ± .05		± 1/64
.XX ± .01		ANGLES
.XXX ± .005		± 0° 30'

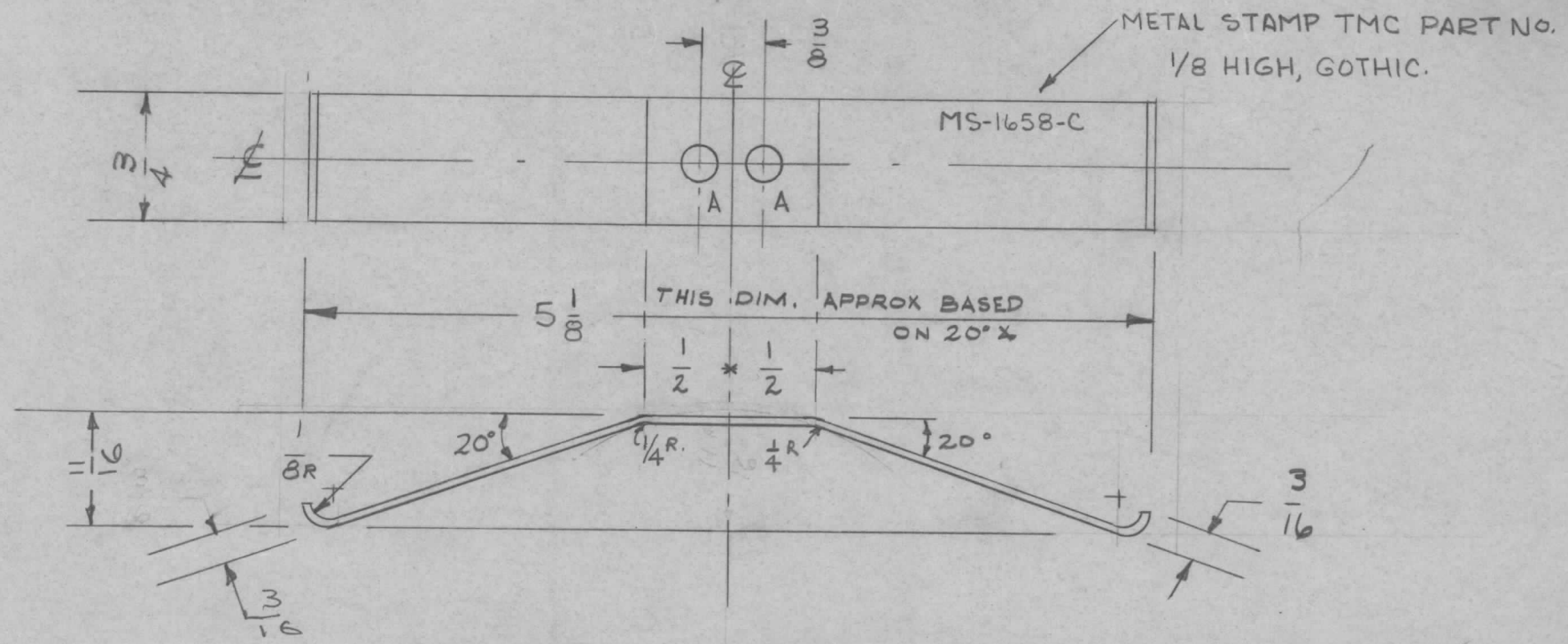
CUT HERE  
GUARANTEED  
2-66

FINISH:  
DEGREASE  
S-114 ZINC CHROMATE PRIMER  
S-115 SMOOTH GRAY ENAMEL

ISSUE	ITEM	CHANGED FROM	DATE	CH. NO.	DRAFTS	CHECKER	ENG. APP.	REQ. ITEM	PART NO.	DESCRIPTION	SYMBOL	
								.012		THE TECHNICAL MATERIEL CORP.		
								STOCK SIZE		MAMARONECK, NEW YORK		
								STEEL		HOLDER, CARD		
								MATERIAL				
								MILD		<i>Al</i>		
								TYPE & TEMPER	HEATTREAT. SPEC.	DRAWN	CHECKED	FINAL APPROVAL
								SEE NOTE		<i>Al</i>		MS-1656
								FINISH & SPEC. NO.		ELEC. DES. APP	MECH. DES. APP	

A - 13/64 DIA. 2 REQ'D.

REQ. PER UNIT	USED ON			MS-1658	C
	MODEL	ASS'Y. NO.	DATE		
2	GPT-10K	AX-171			
1	GPT-40K	AX-209	7-1-60		



(STRIP LENGTH 5 7/16")

UNLESS OTHERWISE SPECIFIED  
DIMENSIONS ARE IN INCHES AND INCLUDE  
CHEMICALLY APPLIED OR PLATED FINISHES

DECIMALS	TOLERANCES	FRACTIONS
.X ± .05		± 1/64
.XX ± .01		ANGLES
.XXX ± .005		± 0° 30'

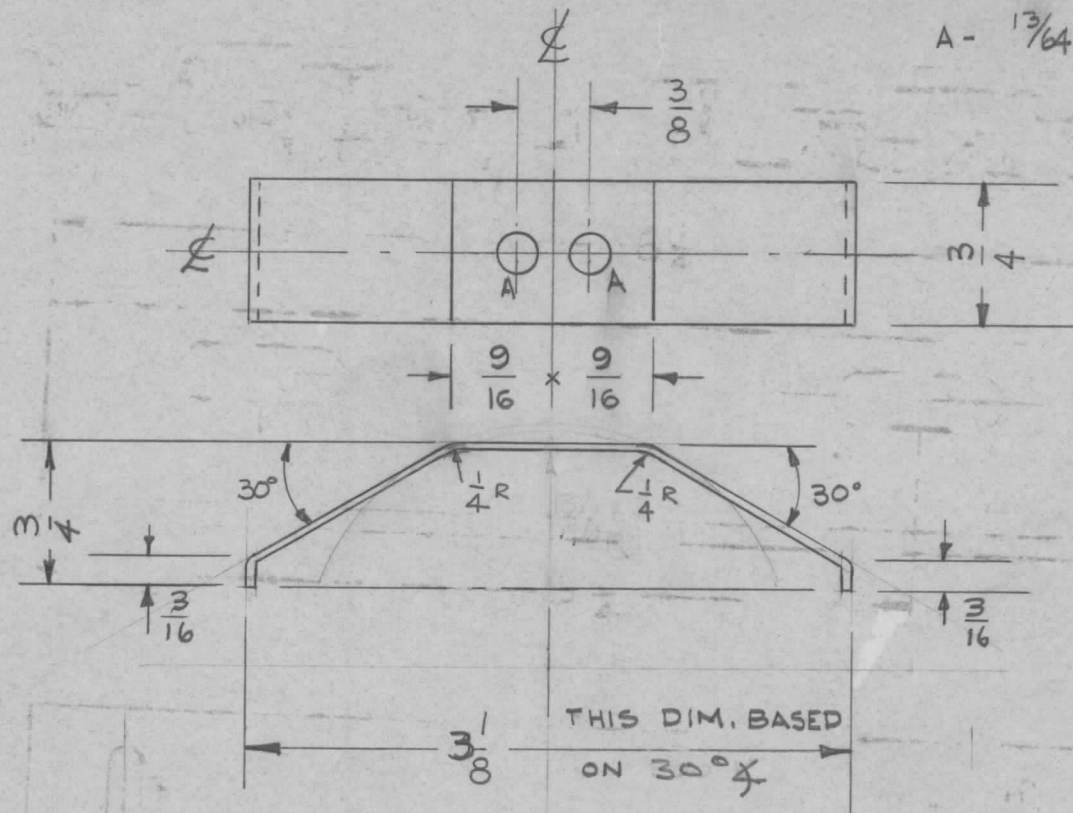
CUT HERE  
GUARANTEED  
2-66

ISSUE	ITEM	CHANGED FROM	DATE	CH. NO.	DRAFTS	CHECKER	ENG. APP.	REQ. ITEM	PART NO.	DESCRIPTION	SYMBOL		
C	1	DIM. 5 1/8 WAS 4 15/32	3-7-63	8466				.040		THE TECHNICAL MATERIEL CORP. MAMARONECK, NEW YORK GROUND STRAP	C		
B	1	HEAT TREATMENT ADDED	3-2-61	4317				STOCK SIZE					
A		ADDED 1" FLAT @ 20°	10/12/59	1396	PI			MATERIAL	BERYLLIUM COPPER				
TOLERANCES								SCALE:					
DEC. DIM. ± FRAC. DIM. ± ANGULAR DIM. ±								MAXIMUM ALLOWABLE TOLERANCES HAVE BEEN DETERMINED AND ANY DEVIATIONS WILL BE CAUSE FOR REJECTION. REMOVE ALL BURRS AND SHARP EDGES					
								2 HRS. AT 600° F		DRAWN		CHECKED	FINAL APPROVAL
								SILVER PLATE .0003		DRAWN		MS 1658	
								FINISH & SPEC. NO.		ELEC. DES. APP		MECH. DES. APP	



REQ. PER. UNIT	USED ON			MS 1659	B
	MODEL	ASS'Y. NO.	DATE		
2	GPT-10K	AX-171			

A - 13/64 DIA, 2 REQ'D.



UNLESS OTHERWISE SPECIFIED DIMENSIONS ARE IN INCHES AND INCLUDE CHEMICALLY APPLIED OR PLATED FINISHES	
DECIMALS	FRACTIONS
.X ± .05	± 1/64
.XX ± .01	ANGLES
.XXX ± .005	± 0° 30'

CUT HERE GUARANTEED 2-66

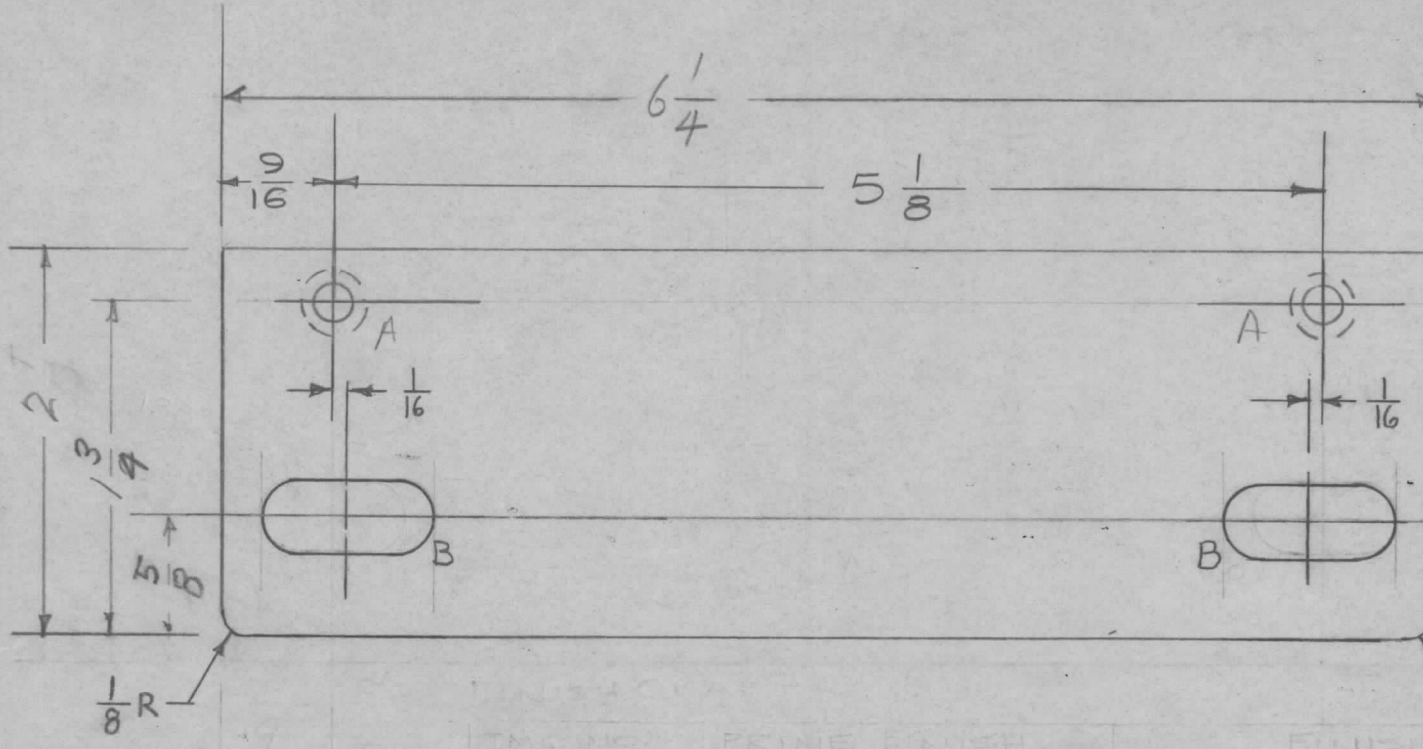
(STRIP LENGTH 3 13/16)

ISSUE	ITEM	CHANGED FROM	DATE	CH. NO.	DRAFTS	CHECKER	ENG. APP.	REQ. ITEM	PART NO.	DESCRIPTION	SYMBOL				
								.040		THE TECHNICAL MATERIEL CORP.					
								STOCK SIZE		MAMARONECK, NEW YORK					
B	1	HEAT TREATMENT ADDED	3-2-61	4317	MLP	JCB	JCB	BERYLLIUM COPPER		CONTACT STRAP					
A		ADDED 1/8 FLAT	10/2/59	1396	PI	JCB	JCB	MATERIAL							
TOLERANCES			SCALE:					2 HRS. AT 600° F.		10RILLD					
DEC. DIM. ±			MAXIMUM ALLOWABLE TOLERANCES HAVE BEEN DETERMINED AND ANY DEVIATIONS WILL BE CAUSE FOR REJECTION. REMOVE ALL BURRS AND SHARP EDGES					TYPE & TEMPER	HEAT TREAT. SPEC.	DRAWN	CHECKED	FINAL APPROVAL			
FRAC. DIM. ±								5245 SILVER PLATE							
ANGULAR DIM. ±															
								FINISH & SPEC. NO.	ELEC. DES. APP	MECH. DES. APP	MS 1659 B				

PRIME OR DIP	FINISH
S114 ZINC CHROM.	S520 BLUE-GRAY, TEXTURED ENAMEL

REQ. PER. UNIT	USED ON			MS-1660	G
	MODEL	ASS'Y. NO.	DATE		
2	GPT-10K	AX-166			
2	GPT-40K		3-28-60		

OR PRIME & PAINT PER CUSTOMER SPECIFICATIONS



A-DR & C'SINK FOR 10-32 2REQ.  
 B-3/8 X 7/8 SLOT 2"

FINISH  
 S444 YELT. 130DRE  
 S114 ZINC CHROMATE  
 S520 ROY. BLUE-GRAY ENAMEL

G	1	S520 FINISH WAS S220 FIN.	10/14/63	10189		MAP	MSB
	3	S052-H32 DELETED		88			
F	2	STOCK SIZE WAS 1/8	10/11/60	3212			
	1	MAP. WAS ALUM.					
E	1	PART N° WAS MS-1660-10R2 Deleted Under Finish added Per Cust. Spec.	5-25-60	2373		file	MSB
D	1	CHART ADDED	5-13-60	2251	CS	JCB	MSB
C	1	"B" WAS 3/8 X 3/4 SLOT ON 5/8 Ø	3-28-60	-	MSB	file	MSB
B	1	2 REQ PER UNIT WAS 4	3-21-60	1903	MSB	file	MSB
A	1	FINISH CHART ADDED MS-1660-1 WAS MS-1660	4/28/59	1225	16		MSB

REQ. ITEM	PART NO.	DESCRIPTION	SYMBOL
	11 GA	THE TECHNICAL MATERIEL CORP.	
	STOCK SIZE	MAMARONECK, NEW YORK	
	STEEL	PLATE, Door Latch.	
	MATERIAL	TOP, FRONT & REAR	
TYPE & TEMPER	HEAT TREAT. SPEC.	DRAWN	CHECKED
See Chart			
FINISH & SPEC. NO.	ELEC. DES. APP	MECH. DES. APP	

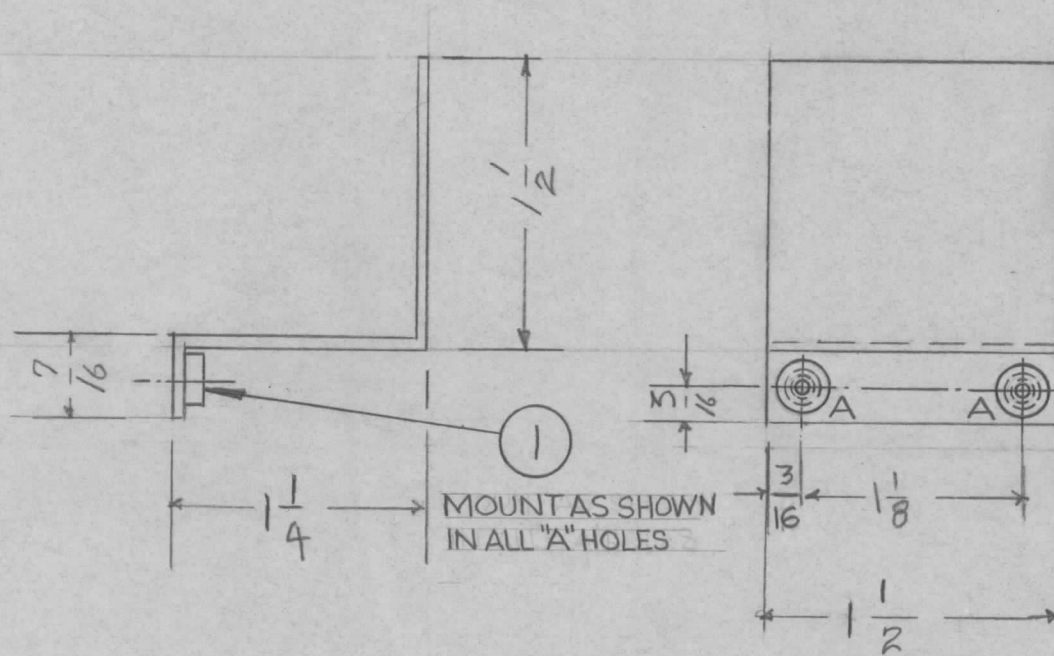
TOLERANCES		SCALE:	
DEC. DIM. ±		MAXIMUM ALLOWABLE TOLERANCES HAVE BEEN DETERMINED AND ANY DEVIATIONS WILL BE CAUSE FOR REJECTION.	
FRAC. DIM. ± 1/64		REMOVE ALL BURRS AND SHARP EDGES	
ANGULAR DIM. ±			





REQ. PER. UNIT	USED ON			MS-1662 A
	MODEL	ASS'Y. NO.	DATE	
1	GPT-10K	AUX		

A ~ .194 DIA. HOLE (2 REQ)



UNLESS OTHERWISE SPECIFIED  
DIMENSIONS ARE IN INCHES AND INCLUDE  
CHEMICALLY APPLIED OR PLATED FINISHES

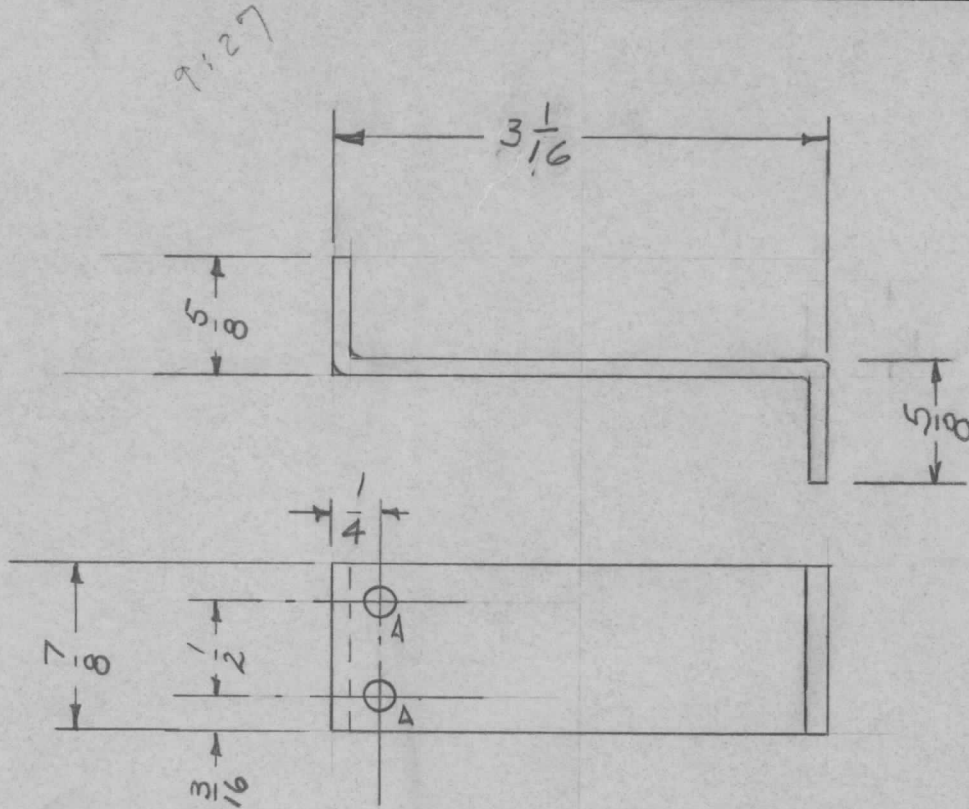
DECIMALS	TOLERANCES	FRACTIONS
.X ± .05		± 1/64
.XX ± .01		ANGLES
.XXX ± .005		± 0° 30'

CUT HERE  
GUARANTEED  
2-66

		2	1	NT129-632-4	NUT, SWAGE TYPE			
		REQ.	ITEM	PART NO.		DESCRIPTION		SYMBOL
				.064		THE TECHNICAL MATERIEL CORP.		
				STOCK SIZE		MAMARONECK, NEW YORK		
				ALUM.		Cover		
				MATERIAL		UTILITY - OUTLET PANEL		
				5052-H32		[Signature]		
				TYPE & TEMPER		DRAWN		FINAL APPROVAL
				HEAT TREAT. SPEC.		CHECKED		
				5404 1R/dite		[Signature]		MS-1662 A
				FINISH & SPEC. NO.		ELEC. DES. APP		MECH. DES. APP

ISSUE	ITEM	CHANGED FROM	DATE	CH. NO.	DRAFTS	CHECKER	ENG. APP.
A	1	ADDED ITEM (1); (2) "A" HOLES WERE 3/16 DIA.	7-29-63	9666	AKI	YAG	[Signature]
TOLERANCES			SCALE:				
DEC. DIM. ±			MAXIMUM ALLOWABLE TOLERANCES HAVE				
FRAC. DIM. ±			BEEN DETERMINED AND ANY DEVIATIONS				
ANGULAR DIM. ±			WILL BE CAUSE FOR REJECTION.				
			REMOVE ALL BURRS AND SHARP EDGES				

REQ. PER. UNIT	USED ON			MS-1664	A
	MODEL	ASS'Y. NO.	DATE		
1	GPT-10KW	RELAY PANEL			



UNLESS OTHERWISE SPECIFIED  
DIMENSIONS ARE IN INCHES AND INCLUDE  
CHEMICALLY APPLIED OR PLATED FINISHES

DECIMALS	FRACTIONS
.X ± .05	± 1/64
.XX ± .01	ANGLES
.XXX ± .005	± 0° 30'

TOLERANCES

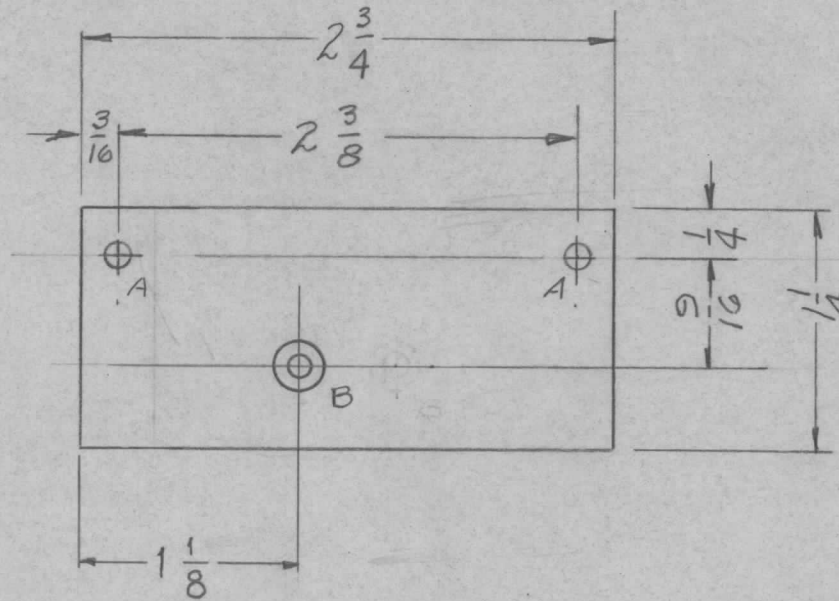
CUT HERE  
GUARANTEED  
2-66

REQ.	ITEM	PART NO.	DESCRIPTION	SYMBOL
		.081	THE TECHNICAL MATERIEL CORP.	
		STOCK SIZE	MAMARONECK, NEW YORK	
A	3 1/16 WAS 2 3/16 WAS 2 3/16	ALUMINUM	PLATE MOUNTING BRACKET	
ISSUE	ITEM	CHANGED FROM	GPT-10K RELAY PANEL	
		DATE	10RILLO	
		CH. NO.	DRAWN	
		DRAFTS	CHECKED	
		CHECKER	FINAL APPROVAL	
		ENG. APP.	MS-1664	A
TOLERANCES		SCALE:	ELEC. DES. APP	MECH. DES. APP
DEC. DIM. ±		MAXIMUM ALLOWABLE TOLERANCES HAVE BEEN DETERMINED AND ANY DEVIATIONS WILL BE CAUSE FOR REJECTION. REMOVE ALL BURRS AND SHARP EDGES		
FRAC. DIM. ±				
ANGULAR DIM. ±				

REQ. PER. UNIT	USED ON			MS-1667	A
	MODEL	ASS'Y. NO.	DATE		
1	RFB-1				
	RFC-1		11-22-60		

A-  $\frac{11}{64}$  (.171) DIA HOLE 2 REQ.

B- C'SINK FOR 6-32 F.H.S. 1 REQ.



UNLESS OTHERWISE SPECIFIED DIMENSIONS ARE IN INCHES AND INCLUDE CHEMICALLY APPLIED OR PLATED FINISHES			
DECIMALS	TOLERANCES		FRACTIONS
.X ± .05			± 1/64
.XX ± .01			ANGLES
.XXX ± .005			± 0° 30'

CUT HERE  
GUARANTEED  
2-66

REQ.	ITEM	PART NO.	DESCRIPTION				SYMBOL
		1064	THE TECHNICAL MATERIEL CORP.				
		STOCK SIZE	MAMARONECK, NEW YORK				
		ALUMINUM	PLATE, NEUTRALIZING CAP.				
		MATERIAL					
		5052-H32	ave	WLB	20		
		TYPE & TEMPER	DRAWN	CHECKED	FINAL APPROVAL		
		HEAT TREAT. SPEC.					
		5404 IRIDITE		20B			
		FINISH & SPEC. NO.	ELEC. DES. APP	MECH. DES. APP	MS-1667 A		

ISSUE	ITEM	CHANGED FROM	DATE	CH. NO.	DRAFTS	CHECKER	ENG. APP.
A	1	"B" Hole Relocated	6/2/59	1040	JCB	Jude	alb

TOLERANCES		SCALE:
DEC. DIM. ±	MAXIMUM ALLOWABLE TOLERANCES HAVE BEEN DETERMINED AND ANY DEVIATIONS WILL BE CAUSE FOR REJECTION. REMOVE ALL BURRS AND SHARP EDGES	
FRAC. DIM. ±		
ANGULAR DIM. ±		

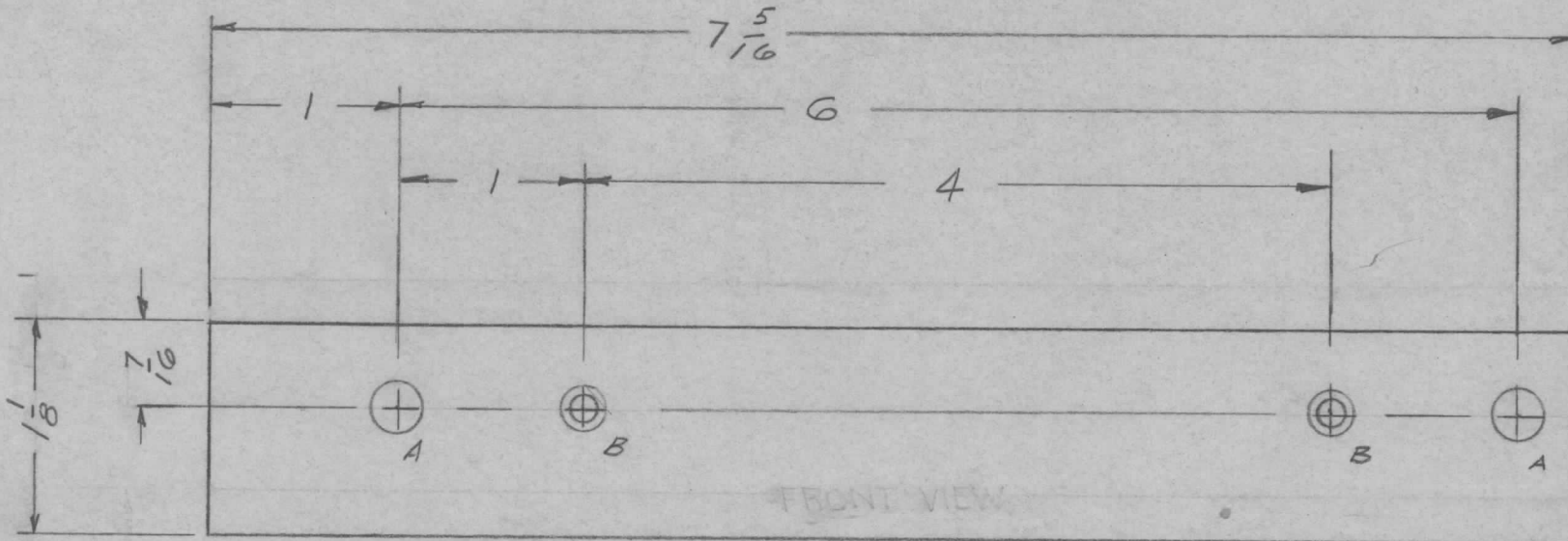




A -  $\frac{9}{32}$  (.281) DIA. HOLE 2 REQ.

B - C'SINK FOR 6-32 F.H.S 2 REQ.

REQ. PER. UNIT	USED ON			MS-1680	D
	MODEL	ASS'Y. NO.	DATE		
1	GPT-10KW		3-23-59		



FRONT VIEW SHOWN

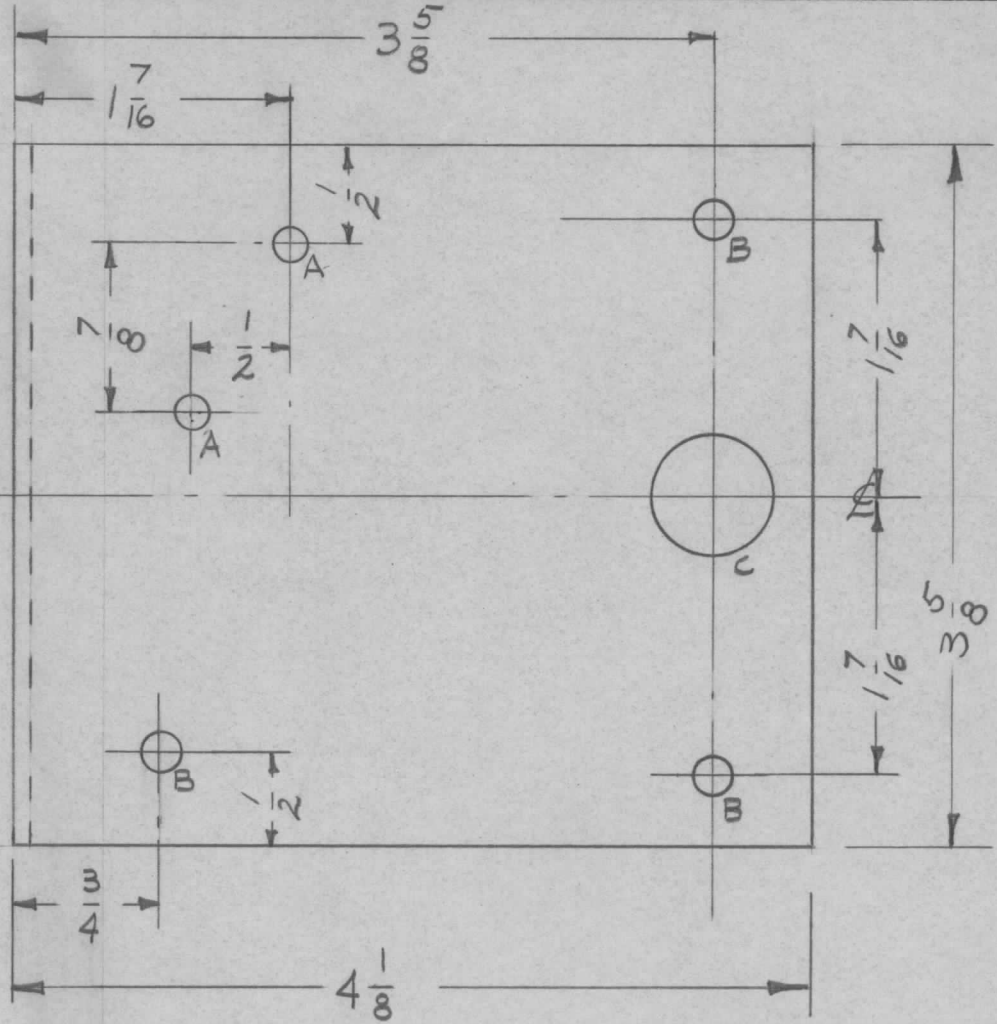
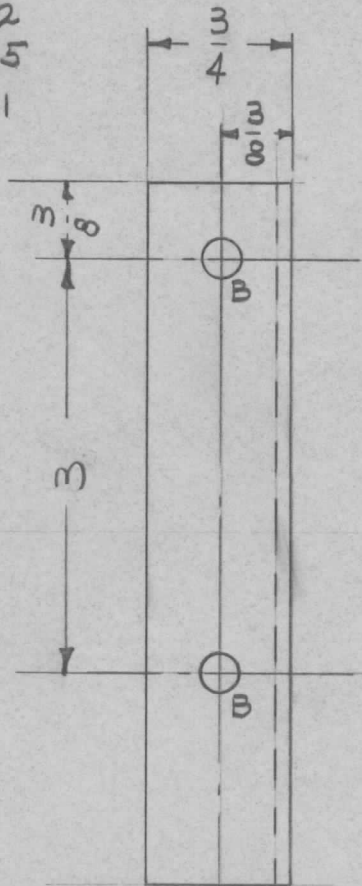
METAL STAMP TMC  
PART NO. MS-1680-D  
 $\frac{1}{8}$  HIGH GOTHIC ON REAR  
OF BRACKET.

FINISH NOTE :

- 1- S-404-YELL-IRIDITE
- 2- S-115 TMC GRAY (FRONT & EDGES ONLY)
- 3- FRONT AND EDGES ONLY

ISSUE	ITEM	CHANGED FROM	DATE	CH. NO.	DRAFTS	CHECKER	ENG. APP.	REQ.	ITEM	PART NO.	DESCRIPTION	SYMBOL					
D	1	FINISH - S115 WAS S-220, RCAF BLUE GRAY	12-7-62	7810	<i>[initials]</i>	<i>[initials]</i>	<i>[initials]</i>				THE TECHNICAL MATERIEL CORP. MAMARONECK, NEW YORK SHIM, LEFT SIDE BRACKET FRONT WINDOW	D					
C	1	ADDED FRONT VIEW TO PICTORIAL & NOTE #3	6-29-62	6844	R.T.	<i>[initials]</i>	<i>[initials]</i>										
B	1	FINISH NOTE ADDED	10/26/60	3291	<i>[initials]</i>	<i>[initials]</i>	<i>[initials]</i>										
A	1	S404-YEL-IRIDITE WAS S101 CAUSTIC DIP	12-59	1001	<i>[initials]</i>	<i>[initials]</i>	EMN										
TOLERANCES			SCALE: <i>cto</i>					5052-H32									
DEC. DIM. $\pm$			MAXIMUM ALLOWABLE TOLERANCES HAVE BEEN DETERMINED AND ANY DEVIATIONS WILL BE CAUSE FOR REJECTION. REMOVE ALL BURRS AND SHARP EDGES					TYPE & TEMPER		HEAT TREAT. SPEC.		DRAWN		CHECKED		FINAL APPROVAL	
FRAC. DIM. $\pm$ $\frac{1}{64}$								SEE FINISH NOTE								<i>[initials]</i>	
ANGULAR DIM. $\pm$								FINISH & SPEC. NO.		ELEC. DES. APP.		MECH. DES. APP.					

A -  $\frac{1}{64}$  DIA 2  
 B -  $\frac{13}{64}$  DIA. 5  
 C -  $\frac{5}{8}$  DIA. 1



REQ. PER. UNIT	USED ON		
	MODEL	ASS'Y. NO.	DATE
1	GPT-101K	IPA	3-20-59

MS-1681

UNLESS OTHERWISE SPECIFIED  
 DIMENSIONS ARE IN INCHES AND INCLUDE  
 CHEMICALLY APPLIED OR PLATED FINISHES

DECIMALS	TOLERANCES	FRACTIONS
.X ± .05		± 1/64
.XX ± .01		ANGLES
.XXX ± .005		± 0° 30'

CUT HERE  
 GUARANTEED  
 2-66

REQ.	ITEM	PART NO.	DESCRIPTION	SYMBOL							
		1081	THE TECHNICAL MATERIEL CORP.								
		STOCK SIZE	MAMARONECK, NEW YORK								
		ALUMINUM	REAR SWITCH BRACKET								
		MATERIAL									
ISSUE	ITEM	CHANGED FROM	DATE	CH. NO.	DRAFTS	CHECKER	ENG. APP.				
TOLERANCES			SCALE:								
DEC. DIM. ±			MAXIMUM ALLOWABLE TOLERANCES HAVE BEEN DETERMINED AND ANY DEVIATIONS WILL BE CAUSE FOR REJECTION. REMOVE ALL BURRS AND SHARP EDGES								
FRAC. DIM. ±											
ANGULAR DIM. ±											
S052-H32		TYPE & TEMPER		HEATTREAT. SPEC.		DRAWN		CHECKED		FINAL APPROVAL	
IRIDITE		FINISH & SPEC. NO.		ELEC. DES. APP		MECH. DES. APP		MS-1681			

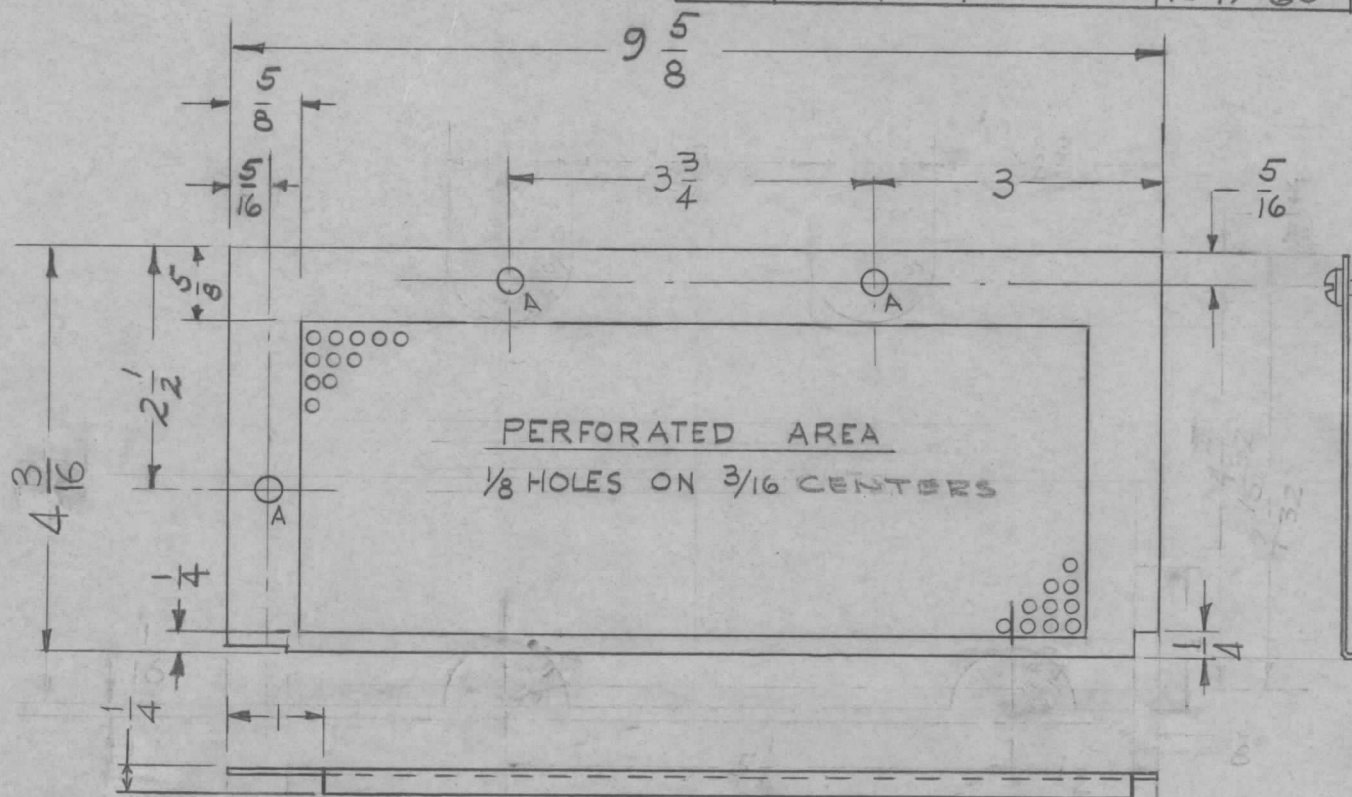


A-1/4(.25) 3 REQ'D

REQ. PER. UNIT	USED ON		
	MODEL	ASS'Y. NO.	DATE
1	RFB-1	GPT-10K	
1	RFD-1	PAL-1K	6-23-59
1	RFC-1		12-19-60

MS-1682

H



MOUNT IN ALL 'A' HOLES AS SHOWN

ISSUE	ITEM	CHANGED FROM	DATE	CH. NO.	DRAFTS	CHECKER	ENG. APP.
H	1	REF. DELE. 1/4 ADDED	11-30-65	15295	H.V.	JCS	
G	1	Items (1)(2) Added	1-2-62	6132	J.H.	JCS	
F	1	1" Notch was 5/8"	5-3-61	4822	J.C.B.	JCS	
E	3	5/8" Corner Notch Added	7-14-61	4120	Rm	JCS	RK
	2	1/4" LIP Added					
D	1	DIM. 4 3/16 was 4 1/16					
	2	5/8R Notches relocated	2-11-61	4059	RU	JCS	RK
C	1	Dim 4 1/16 was 4 23/32 (left side)	12-19-60	5761	RU	JCS	RK
B	2	ADDED 1/4" CUT OUTS	4/7/59				
A	1	ADDED 1/8 x 3/4 CUT OUT	4/2/59				

REQ. ITEM	PART NO.	DESCRIPTION	SYMBOL
3 2	FS-110-1	STUD, SLOTTED	A
3 1	FS-109-3	RING	
.051		THE TECHNICAL MATERIEL CORP.	
ALUMINUM		MAMARONECK, NEW YORK	
MATERIAL		RF-CHASSIS COVER	
S052-H32		GPT-10K IPA	
TYPE & TEMPER		DRAWN	CHECKED
S404 IRIDITE		ATB	JCS
FINISH & SPEC. NO.		ELEC. DES. APP	MECH. DES. APP
		MS-1682	H

**TOLERANCES**

DEC. DIM. ± 1/64  
 FRAC. DIM. ± 1/64  
 ANGULAR DIM. ±

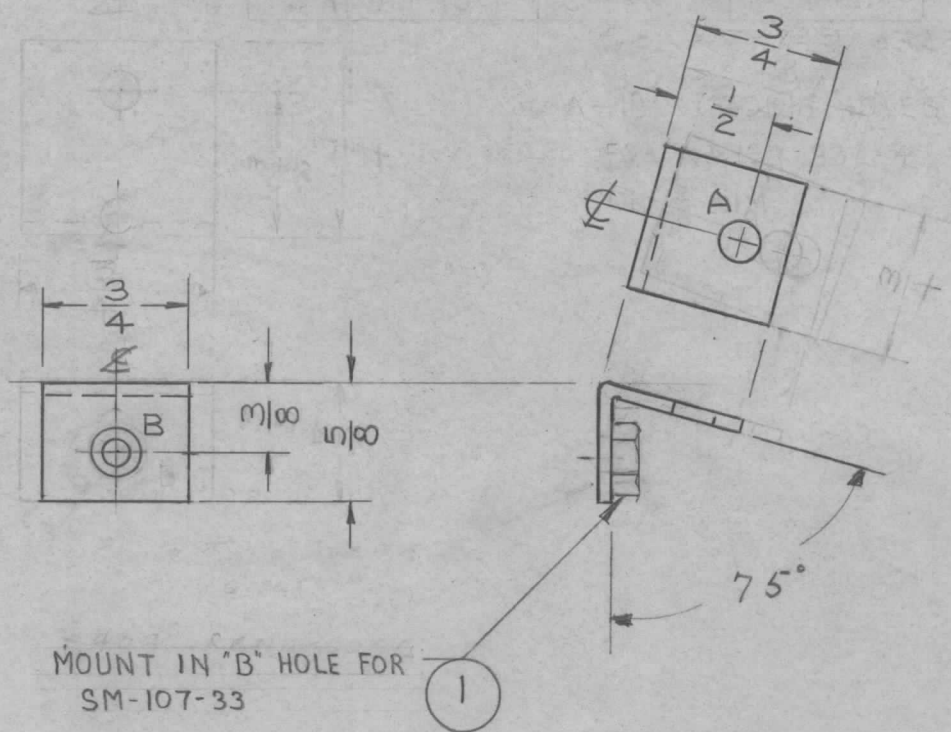
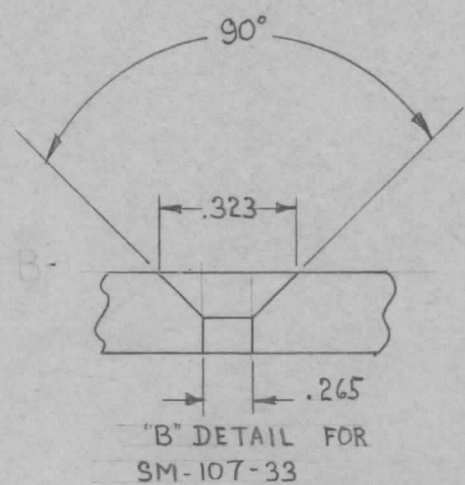
**SCALE:**

MAXIMUM ALLOWABLE TOLERANCES HAVE BEEN DETERMINED AND ANY DEVIATIONS WILL BE CAUSE FOR REJECTION. REMOVE ALL BURRS AND SHARP EDGES

REQ. PER. UNIT	USED ON		
	MODEL	ASS'Y. NO.	DATE
2	AX-107	GPT-10K	3-24-59
3	AX-173	GPT-10K	
3	AM-109	GPT-40K	1-27-60

MS-1684 EJ

A ~ 13/64 DIA. HOLE 1 REQ.



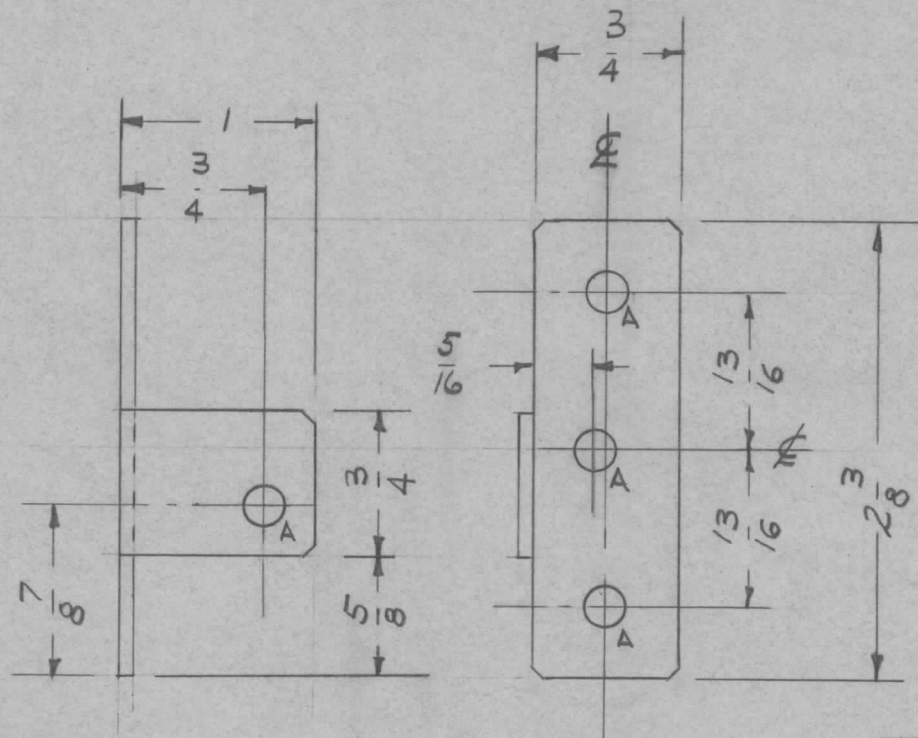
ISSUE	ITEM	CHANGED FROM	DATE	CH. NO.	DRAFTS	CHECKER	ENG. APP.
E	1	PICTORIAL CLARIFIED	9-9-60	2931	CS		JLB
D	1	AT-101 DELETED	3-14-60	~	MF		208
C	2	SM-107-33 WAS NT-129-832-4	2-4-60	1833	W.F.	16	28
	1	"A" HOLE WAS .191-194, 2 REQ.					
B	1	GPT-40K ADDED	1-27-60	-	W.F.	JLB	28
A	1	5404-IRIDITE WAS S101 CAUSTIC DIP	12-8-59	1001	P		EMN

REQ.	ITEM	PART NO.	DESCRIPTION	SYMBOL
1	1	SM-107-33	INSERT HEX	
			THE TECHNICAL MATERIEL CORP. MAMARONECK, NEW YORK	
			Meter Panel Backsets Meter Boxes.	
TOLERANCES		SCALE: 1/10	5052-H32	
DEC. DIM. ±		MAXIMUM ALLOWABLE TOLERANCES HAVE BEEN DETERMINED AND ANY DEVIATIONS WILL BE CAUSE FOR REJECTION. REMOVE ALL BURRS AND SHARP EDGES	TYPE & TEMPER HEATTREAT.SPEC.	
FRAC. DIM. ± 1/64			3404-YEL IRIDITE	
ANGULAR DIM. ±			FINISH & SPEC. NO.	
		DRAWN		CHECKED
		ELEC. DES. APP		MECH. DES. APP
		MS-1684		E

REQ. PER. UNIT	USED ON			MS-1685	A
	MODEL	ASS'Y. NO.	DATE		
1	RFB-1	GPT-10K			
1	RFD-1	PAL-1K	6-23-59		
	RFC-1		11-22-60		

A-13/64 (.203)

4-REQ'D.



Note:  
All corners nicked  
1/16 x 1/16.

UNLESS OTHERWISE SPECIFIED DIMENSIONS ARE IN INCHES AND INCLUDE CHEMICALLY APPLIED OR PLATED FINISHES	
DECIMALS .X ± .05 .XX ± .01 .XXX ± .005	FRACTIONS ± 1/64 ANGLES ± 0° 30'
<b>TOLERANCES</b>	

CUT HERE  
GUARANTEED  
2-66

ISSUE	ITEM	CHANGED FROM	DATE	CH. NO.	DRAFTS	CHECKER	ENG. APP.	REQ. ITEM	PART NO.	DESCRIPTION	SYMBOL	
									.064	THE TECHNICAL MATERIEL CORP.		
									STOCK SIZE	MAMARONECK, NEW YORK		
A	1	Nicked all corners	12-5-59	1627	DJM	16	[Signature]		ALUMINUM	CAPACITOR MOUNTING BRACKET		
									MATERIAL			
TOLERANCES			SCALE:					5052-H32		TORILLO		[Signature]
DEC. DIM. ± FRAC. DIM. ± ANGULAR DIM. ±			MAXIMUM ALLOWABLE TOLERANCES HAVE BEEN DETERMINED AND ANY DEVIATIONS WILL BE CAUSE FOR REJECTION. REMOVE ALL BURRS AND SHARP EDGES					TYPE & TEMPER	HEAT TREAT. SPEC.	DRAWN	CHECKED	FINAL APPROVAL
								5404-IRIDITE		ATB	[Signature]	MS-1685
								FINISH & SPEC. NO.		ELEC. DES. APP.	MECH. DES. APP.	A



REQ. PER. UNIT	USED ON		
	MODEL	ASS'Y. NO.	DATE
1	RFB-1	GPT-10K	
1	RFD-1	PAL-1K	6-23-59
	RFC-1		11-22-60

MS-1686

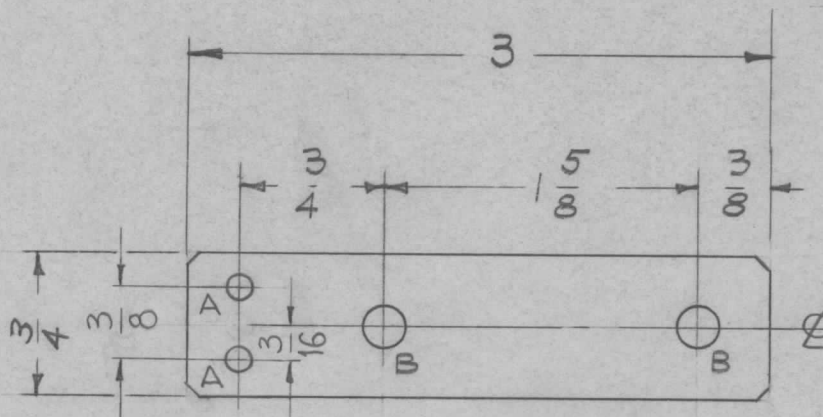
B

A - 1/8 (.125)

2 REQ'D,

B - 13/64 (.203)

2 REQ'D,



Note:

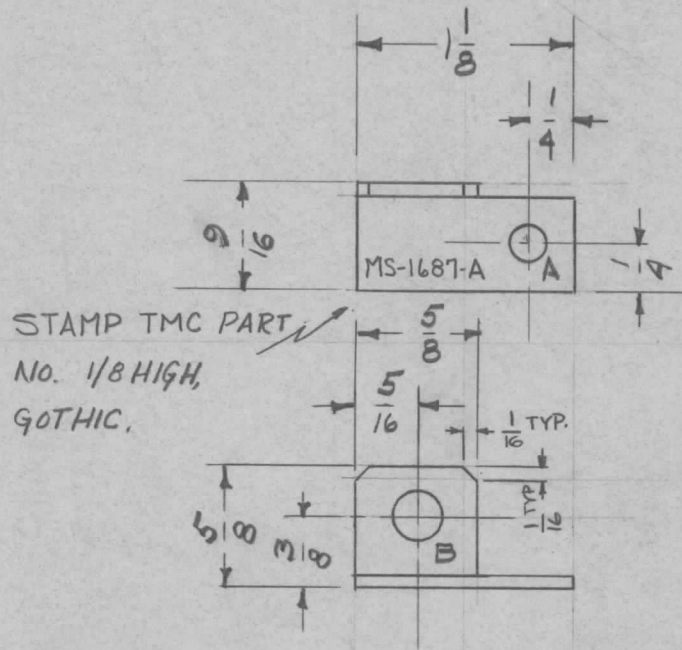
All Corners Nicked

1/16 x 1/16.

REQ.	ITEM	PART NO.	DESCRIPTION				SYMBOL
		.064	THE TECHNICAL MATERIEL CORP.				
		STOCK SIZE	MAMARONECK, NEW YORK				
B	2	ØA" Hole Added	CAPACITOR STRAP				
	1	ØA" Hole relocated					
A	1	Nicked all corners					
ISSUE	ITEM	CHANGED FROM	DATE	CH. NO.	DRAFTS	CHECKER	ENG. APP.
TOLERANCES			SCALE:				
DEC. DIM. ±			MAXIMUM ALLOWABLE TOLERANCES HAVE BEEN DETERMINED AND ANY DEVIATIONS WILL BE CAUSE FOR REJECTION. REMOVE ALL BURRS AND SHARP EDGES				
FRAC. DIM. ± 1/64							
ANGULAR DIM. ±							
5052-H32			TYPE & TEMPER		HEAT TREAT. SPEC.		
3404 IRIDITE			DRAWN		CHECKED		FINAL APPROVAL
FINISH & SPEC. NO.			ELEC. DES. APP		MECH. DES. APP		
						MS-1686	B

REQ. PER. UNIT	USED ON			MS-1687	A
	MODEL	ASS'Y. NO.	DATE		
1	RFB-1	GPT-10K			
1	RFD-1	PAL-1K	6-23-59		
	RFC-1		11-22-60		

A - 3/16 (.187) DIA. 1  
 B - 1/4 (.25) DIA. 1



UNLESS OTHERWISE SPECIFIED  
 DIMENSIONS ARE IN INCHES AND INCLUDE  
 CHEMICALLY APPLIED OR PLATED FINISHES

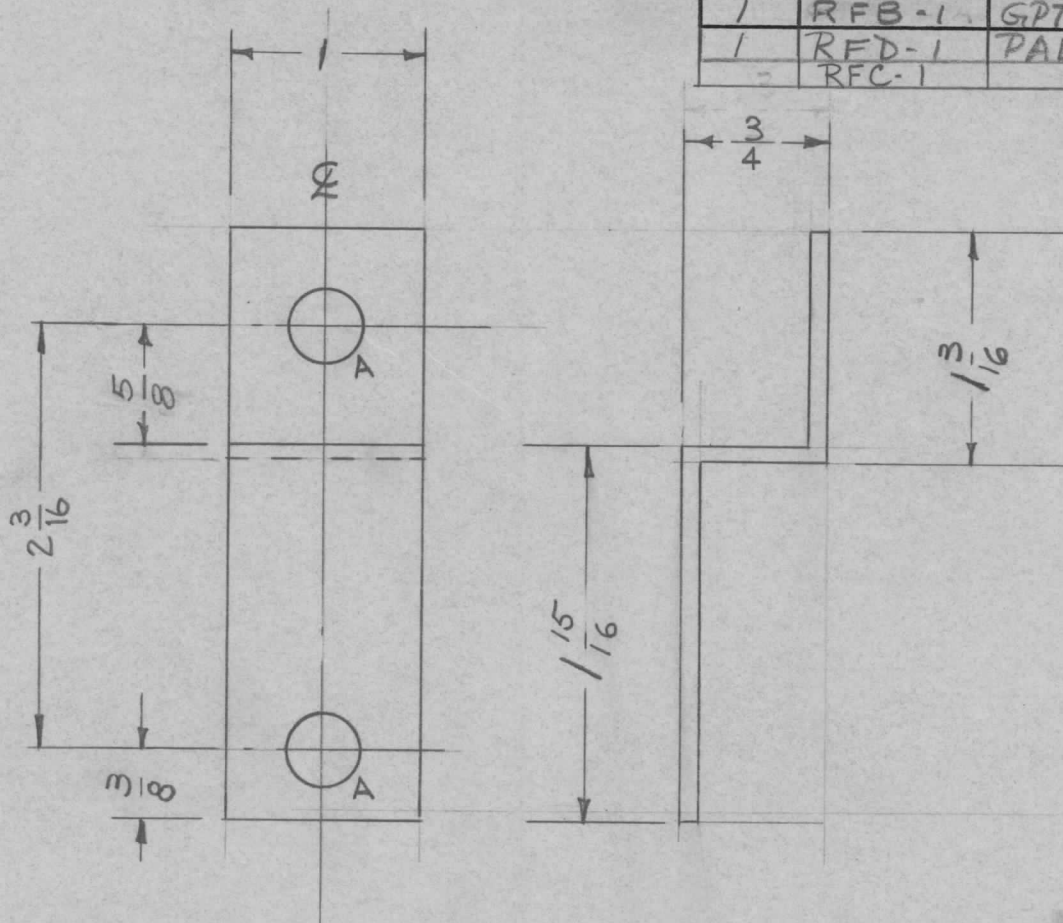
DECIMALS	FRACTIONS
.X ± .05	± 1/64
.XX ± .01	ANGLES
.XXX ± .005	± 0° 30'

TOLERANCES

CUT HERE  
 GUARANTEED  
 2-66

ISSUE	ITEM	CHANGED FROM	DATE	CH. NO.	DRAFTS	CHECKER	ENG. APP.	REQ. ITEM	PART NO.	DESCRIPTION	SYMBOL
									.064	THE TECHNICAL MATERIEL CORP.	
									STOCK SIZE	MAMARONECK, NEW YORK	
									ALUMINUM	RF CHOKE MTG. BRKT	
									MATERIAL		
									5052-H32	DRILLED	
									TYPE & TEMPER	CHECKED	FINAL APPROVAL
									HEAT TREAT. SPEC.		
									5404 IRIDITE	APB	MS-1687
									FINISH & SPEC. NO.	MECH. DES. APP.	A

REQ. PER. UNIT	USED ON			MS-1688	A
	MODEL	ASS'Y. NO.	DATE		
1	RFB-1	GPT10K			
1	RFD-1	PAL-1K	6-23-59		
	RFC-1		11-22-60		



UNLESS OTHERWISE SPECIFIED DIMENSIONS ARE IN INCHES AND INCLUDE CHEMICALLY APPLIED OR PLATED FINISHES	
DECIMALS .X ± .05 .XX ± .01 .XXX ± .005	FRACTIONS ± 1/64 ANGLES ± 0° 30'

CUT HERE  
GUARANTEED  
2-66

REQ.	ITEM	PART NO.	DESCRIPTION	SYMBOL					
		.081	THE TECHNICAL MATERIEL CORP.						
		STOCK SIZE	MAMARONECK, NEW YORK						
A	1	ALUMINUM	SHAFT SUPPORT BRACKET						
ISSUE	ITEM	CHANGED FROM	DATE	CH. NO.	DRAFTS	CHECKER	ENG. APP.		
		Dim 2 3/16 added	12-19-62	1624	JDH	KS	ARB		
TOLERANCES			SCALE:						
DEC. DIM. ±			MAXIMUM ALLOWABLE TOLERANCES HAVE BEEN DETERMINED AND ANY DEVIATIONS WILL BE CAUSE FOR REJECTION.						
FRAC. DIM. ±			REMOVE ALL BURRS AND SHARP EDGES						
ANGULAR DIM. ±									
		5052-H32	TYPE & TEMPER	HEAT TREAT. SPEC.	DRAWN		CHECKED		FINAL APPROVAL
		404-IRIDITE			ATB		ARB		MS-1688
		FINISH & SPEC. NO.	ELEC. DES. APP		MECH. DES. APP				

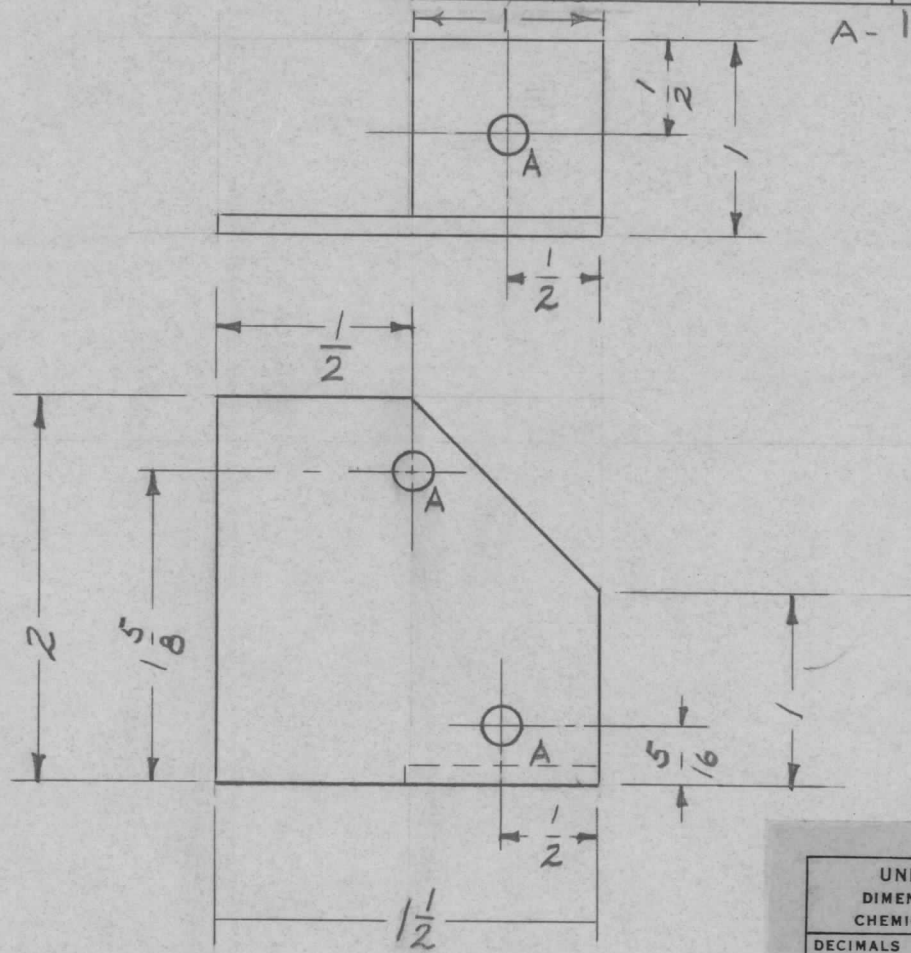


REQ. PER. UNIT	USED ON		
	MODEL	ASS'Y. NO.	DATE
1	RFB-1	GPT-10K	
1	RFD-1	PAL-1K	6-23-59
	RFC-1		11-22-60

MS-1689

A-1<sup>3</sup>/<sub>64</sub> (.203)

3 REQ'D.



UNLESS OTHERWISE SPECIFIED  
DIMENSIONS ARE IN INCHES AND INCLUDE  
CHEMICALLY APPLIED OR PLATED FINISHES

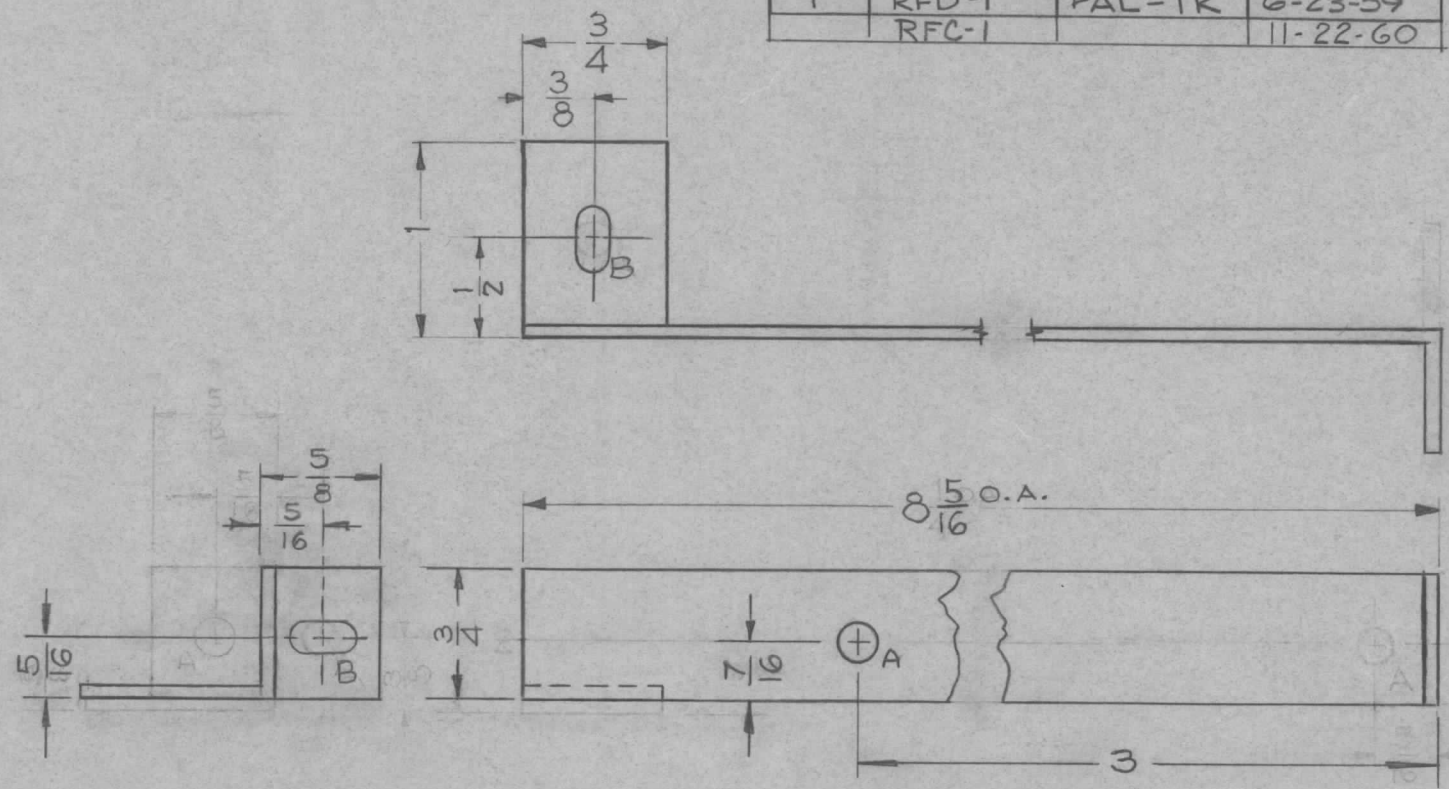
DECIMALS	TOLERANCES	FRACTIONS
.X ± .05		± 1/64
.XX ± .01		ANGLES
.XXX ± .005		± 0° 30'

CUT HERE  
GUARANTEED  
2-66

ISSUE	ITEM	CHANGED FROM	DATE	CH. NO.	DRAFTS	CHECKER	ENG. APP.	REQ. ITEM	PART NO.	DESCRIPTION	SYMBOL		
								.081		THE TECHNICAL MATERIEL CORP.			
								STOCK SIZE		MAMARONECK, NEW YORK			
								ALUMINUM		CHOKE, MOUNTING BRACKET			
								MATERIAL					
TOLERANCES			SCALE: FULL					5052-H32		<i>Torillo</i>		<i>APP</i>	
DEC. DIM. ±			MAXIMUM ALLOWABLE TOLERANCES HAVE BEEN DETERMINED AND ANY DEVIATIONS WILL BE CAUSE FOR REJECTION. REMOVE ALL BURRS AND SHARP EDGES					TYPE & TEMPER	HEAT TREAT. SPEC.	DRAWN	CHECKED	FINAL APPROVAL	
FRAC. DIM. ±								5404 IRIDIOTE		<i>ATB</i>	<i>APP</i>		
ANGULAR DIM. ±								FINISH & SPEC. NO.		ELEC. DES. APP	MECH. DES. APP	MS-1689	

REQ. PER. UNIT	USED ON		
	MODEL	ASS'Y. NO.	DATE
1	RFB-1	GPT-10K	
1	RFD-1	PAL-1K	6-23-59
	RFC-1		11-22-60

MS-1690 E



Holes Req'd.  
 A ~ 3/16 (.187) 1  
 B ~ 11/64 x 11/32 SLOT 2

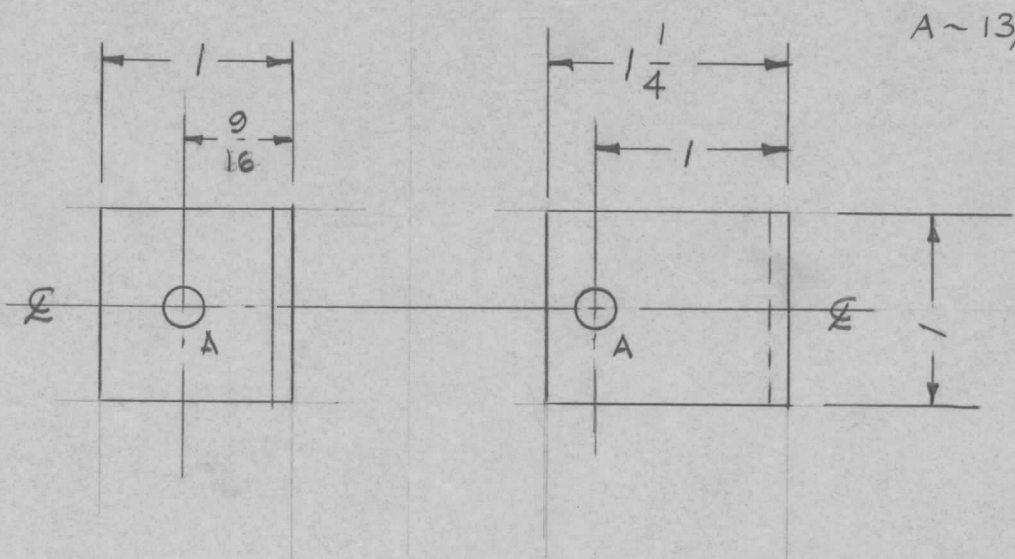
E	1	DELETED 1, A HOLE ADDED 1, B SLOT.	3-23-64	11072	A.M.	@	
D	1	8 5/16 O.A. WAS 8 1/4 O.A.	3-12-63	8524	RC	JWB	
C	3	1 B SLOT WAS AN A HOLE	12/20/60	3756	RU	JCB	
	2	RIGHT SIDE LIP REVERSED					
B	1	Dim 5/16 was 3/8, 7/16 was 3/8					
	3	REVERSE BEND ON SHIELD	5 17 60	2288	cy	JCB	AMB
	2	(1) A HOLE ADDED					
A	1	RELOCATE (1) A HOLE					
	2	3/8 LIP ADDED	12/7/59	1621	JAM	JCB	
	1	(1) A HOLE MOVED redrawn					

ISSUE	ITEM	CHANGED FROM	DATE	CH. NO.	DRAFTS	CHECKER	ENG. APP.
TOLERANCES		SCALE:					
DEC. DIM. ±		MAXIMUM ALLOWABLE TOLERANCES HAVE					
FRAC. DIM. ± 1/64		BEEN DETERMINED AND ANY DEVIATIONS					
ANGULAR DIM. ±		WILL BE CAUSE FOR REJECTION.					
		REMOVE ALL BURRS AND SHARP EDGES					

REQ.	ITEM	PART NO.	DESCRIPTION	SYMBOL
		.051	THE TECHNICAL MATERIEL CORP.	
		STOCK SIZE	MAMARONECK, NEW YORK	
		ALUMINUM	SHIELD, TERMINAL BOARD	
		MATERIAL		
		5052-H32	DF-man	16
		TYPE & TEMPER	DRAWN	CHECKED
		HEATTREAT. SPEC.		FINAL APPROVAL
		S-404 Yellow Iridite		
		FINISH & SPEC. NO.		
			ELEC. DES. APP	MECH. DES. APP
			MS-1690	E

REQ. PER. UNIT	USED ON		
	MODEL	ASS'Y. NO.	DATE
1	RFB-1	GPT10K	
1	RFD-1	PAL-1K	6-23-59
	RFC-1		11-22-60

MS-1691



A ~ 13/64 D.

2 REQ.

UNLESS OTHERWISE SPECIFIED  
DIMENSIONS ARE IN INCHES AND INCLUDE  
CHEMICALLY APPLIED OR PLATED FINISHES

DECIMALS	FRACTIONS
.X ± .05	± 1/64
.XX ± .01	ANGLES
.XXX ± .005	± 0° 30'

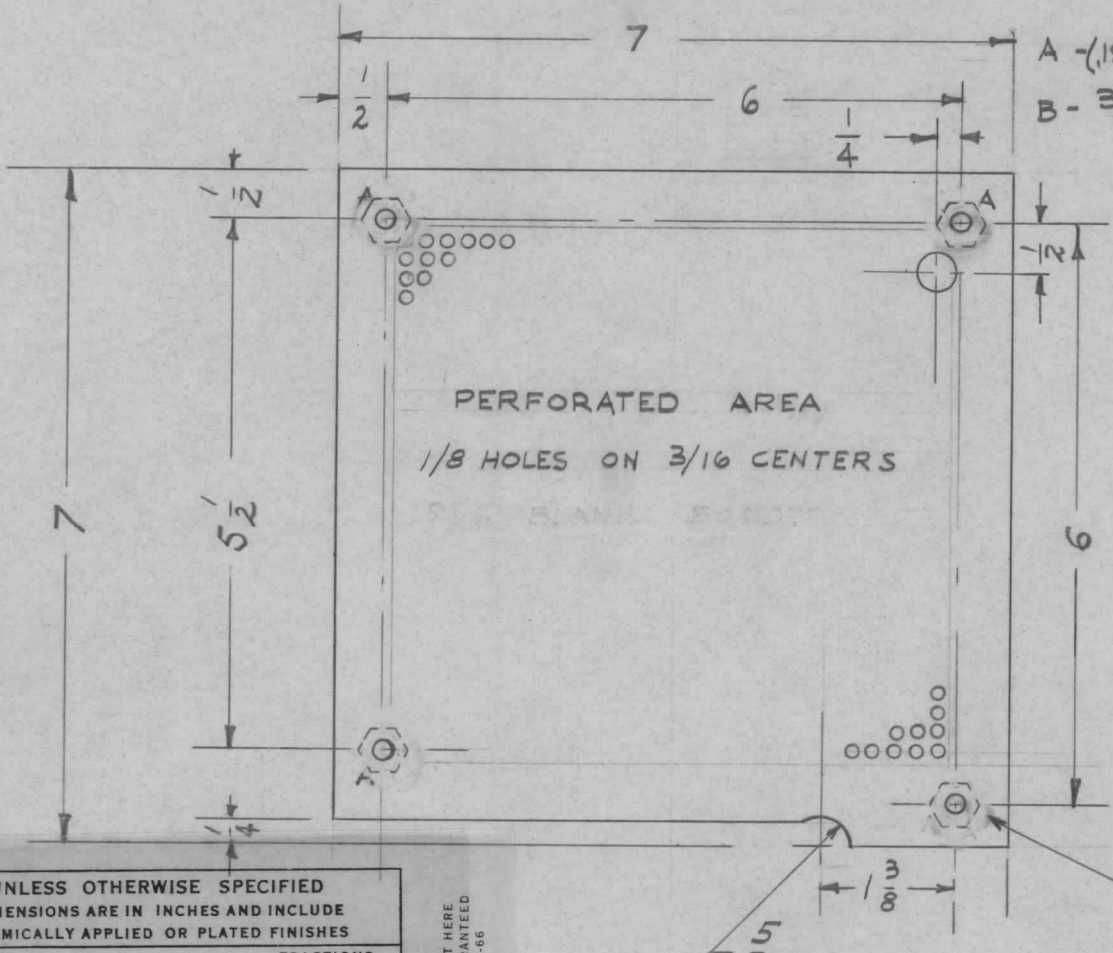
TOLERANCES

CUT HERE  
GUARANTEED  
2-66

REQ.	ITEM	PART NO.	DESCRIPTION	SYMBOL						
		.081	THE TECHNICAL MATERIEL CORP.							
		STOCK SIZE	MAMARONECK, NEW YORK							
		ALUMINUM	CAPACITOR BRKT.							
		MATERIAL								
ISSUE	ITEM	CHANGED FROM	DATE	CH. NO.	DRAFTS	CHECKER	ENG. APP.			
TOLERANCES			SCALE:			5052-H32	TORILLO	ARB		
DEC. DIM. ±			MAXIMUM ALLOWABLE TOLERANCES HAVE BEEN DETERMINED AND ANY DEVIATIONS WILL BE CAUSE FOR REJECTION. REMOVE ALL BURRS AND SHARP EDGES			TYPE & TEMPER	HEAT TREAT. SPEC.	DRAWN	CHECKED	FINAL APPROVAL
FRAC. DIM. ±						5404 IRIDITE		ARB	ARB	
ANGULAR DIM. ±						FINISH & SPEC. NO.	ELEC. DES. APP	MECH. DES. APP	MS-1691	



REQ. PER. UNIT	USED ON			MS-1692	B
	MODEL	ASS'Y. NO.	DATE		
1	RFB-1A				



A - (.194 - .191) 4 REQ'D.  
 B - 3/8 (.375) D 1 "

REF - MS-1693

NT-129-632-4  
 4 REQ'D.

UNLESS OTHERWISE SPECIFIED  
 DIMENSIONS ARE IN INCHES AND INCLUDE  
 CHEMICALLY APPLIED OR PLATED FINISHES

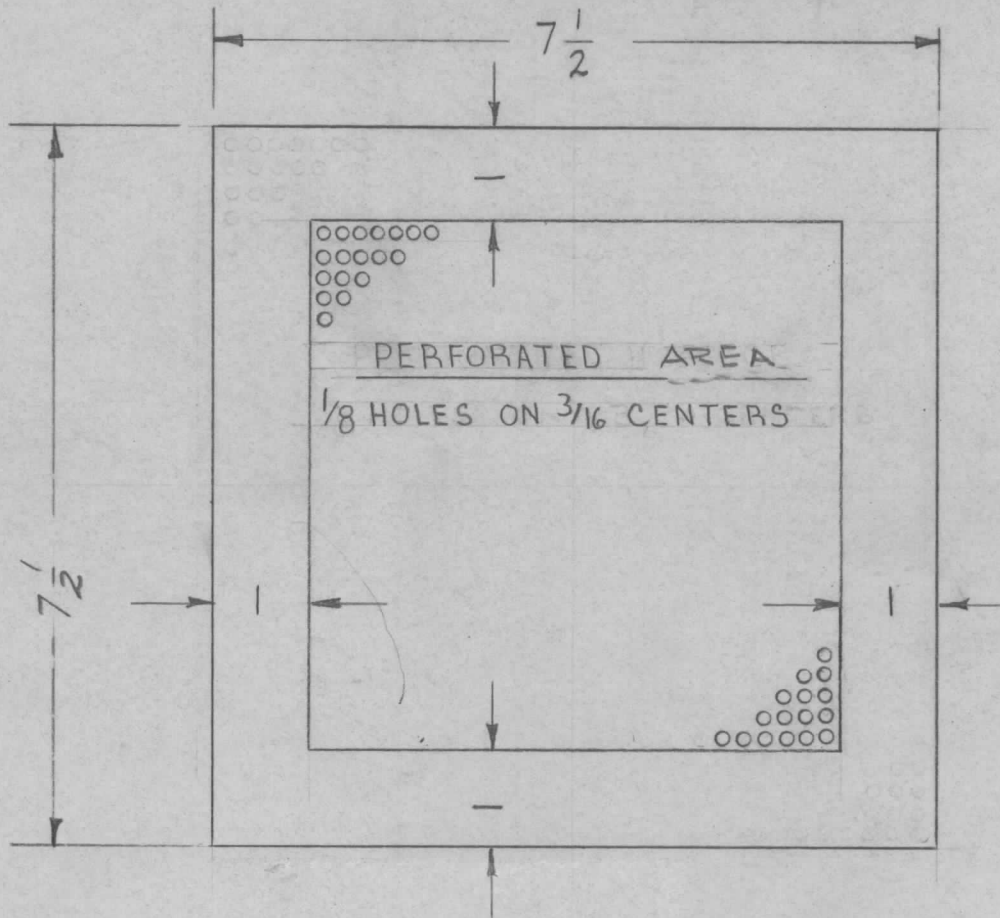
DECIMALS	TOLERANCES	FRACTIONS
.X ± .05		± 1/64
.XX ± .01		ANGLES
.XXX ± .005		± 0° 30'

CUT HERE  
 GUARANTEED  
 2-66

4	1	NT-129-632-4	NUT, ROUND, SWAGE TYPE	
REQ.	ITEM	PART NO.	DESCRIPTION	SYMBOL
		.051	THE TECHNICAL MATERIEL CORP.	
		STOCK SIZE	MAMARONECK, NEW YORK	
		ALUMINUM	BLOWER INTAKE SCREEN	
		MATERIAL	GPT-10K	IPA
		5052-H32	<i>TORILLO</i>	<i>AMB</i>
		TYPE & TEMPER	DRAWN	CHECKED
		HEAT TREAT. SPEC.	<i>ATB</i>	<i>MSB</i>
		FINISH & SPEC. NO.	ELEC. DES. APP.	MECH. DES. APP.
				MS-1692
				B

B	1	NT-129-632-4 WAS SM-107-13	11/14/60		W.F.	<i>Jde</i>	<i>AMB</i>
A		ADDED 'B' HOLE	10/2/59	1400	PI	<i>Jde</i>	<i>AMB</i>
ISSUE	ITEM	CHANGED FROM	DATE	CH. NO.	DRAFTS	CHECKER	ENG. APP.
TOLERANCES			SCALE:				
DEC. DIM. ±			MAXIMUM ALLOWABLE TOLERANCES HAVE BEEN DETERMINED AND ANY DEVIATIONS WILL BE CAUSE FOR REJECTION.				
FRAC. DIM. ±			REMOVE ALL BURRS AND SHARP EDGES				
ANGULAR DIM. ±							

REQ. PER. UNIT	USED ON			MS-1693	A
	MODEL	ASS'Y. NO.	DATE		
1	GPT-10 K				



REF. MS-1692

ISSUE	ITEM	CHANGED FROM	DATE	CH. NO.	DRAFTS	CHECKER	ENG. APP.	REQ. ITEM	PART NO.	DESCRIPTION	SYMBOL	
								.051		THE TECHNICAL MATERIEL CORP.		
								STOCK SIZE		MAMARONECK, NEW YORK		
A.	1	1" BORDER ADDED	11/12/60	1750	W.F.	[Signature]	[Signature]	ALUMINUM		BLOWER INTAKE SCREEN BLANK SIZE		
								MATERIAL		GPT-10K	IPA	
TOLERANCES			SCALE:					5052-H32		<del>10B1440</del>	[Signature]	[Signature]
DEC. DIM. ±			MAXIMUM ALLOWABLE TOLERANCES HAVE BEEN DETERMINED AND ANY DEVIATIONS WILL BE CAUSE FOR REJECTION. REMOVE ALL BURRS AND SHARP EDGES					TYPE & TEMPER	HEAT TREAT. SPEC.	DRAWN	CHECKED	FINAL APPROVAL
FRAC. DIM. ± 1/64												
ANGULAR DIM. ±								FINISH & SPEC. NO.		ELEC. DES. APP	MECH. DES. APP	MS-1693 A