

MS-1802 B

A - 1/4 x 3/8 SLOTS

8 REQ'D

Note Finish

S404 IRIDITE

S114 ZINC CHROMATE PRIMER

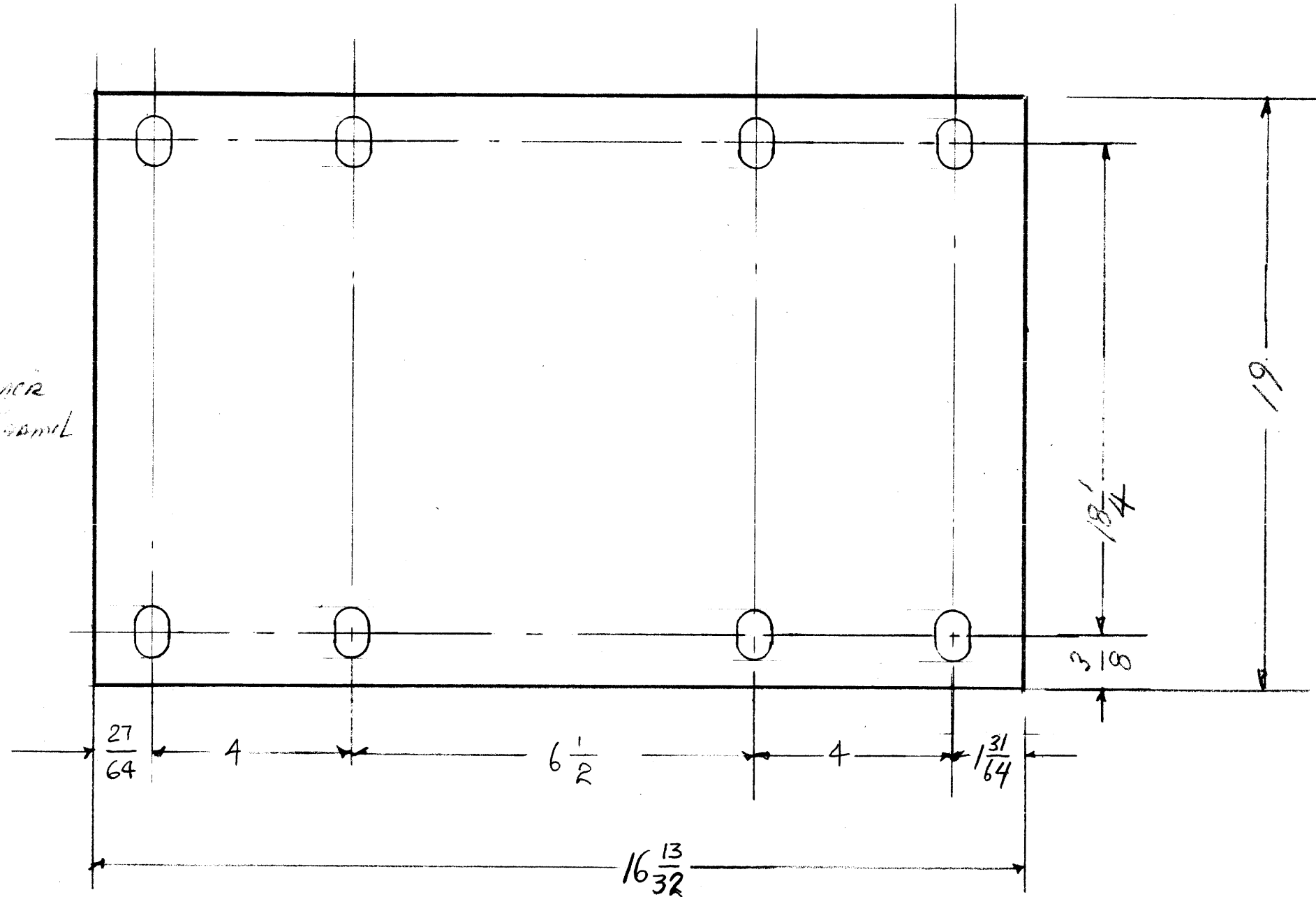
S115 TMC Smooth Grey Enamel

NOTICE TO PERSONS RECEIVING THIS DRAWING

THE TECHNICAL MATERIEL CORPORATION claims proprietary right in the material disclosed hereon. This drawing is issued in confidence for engineering information only and may not be reproduced or used to manufacture anything shown hereon without permission from THE TECHNICAL MATERIEL CORPORATION to the user. This drawing is loaned for mutual assistance and is subject to recall at any time.

Property of:

THE TECHNICAL MATERIEL CORPORATION
MAMARONECK, NEW YORK

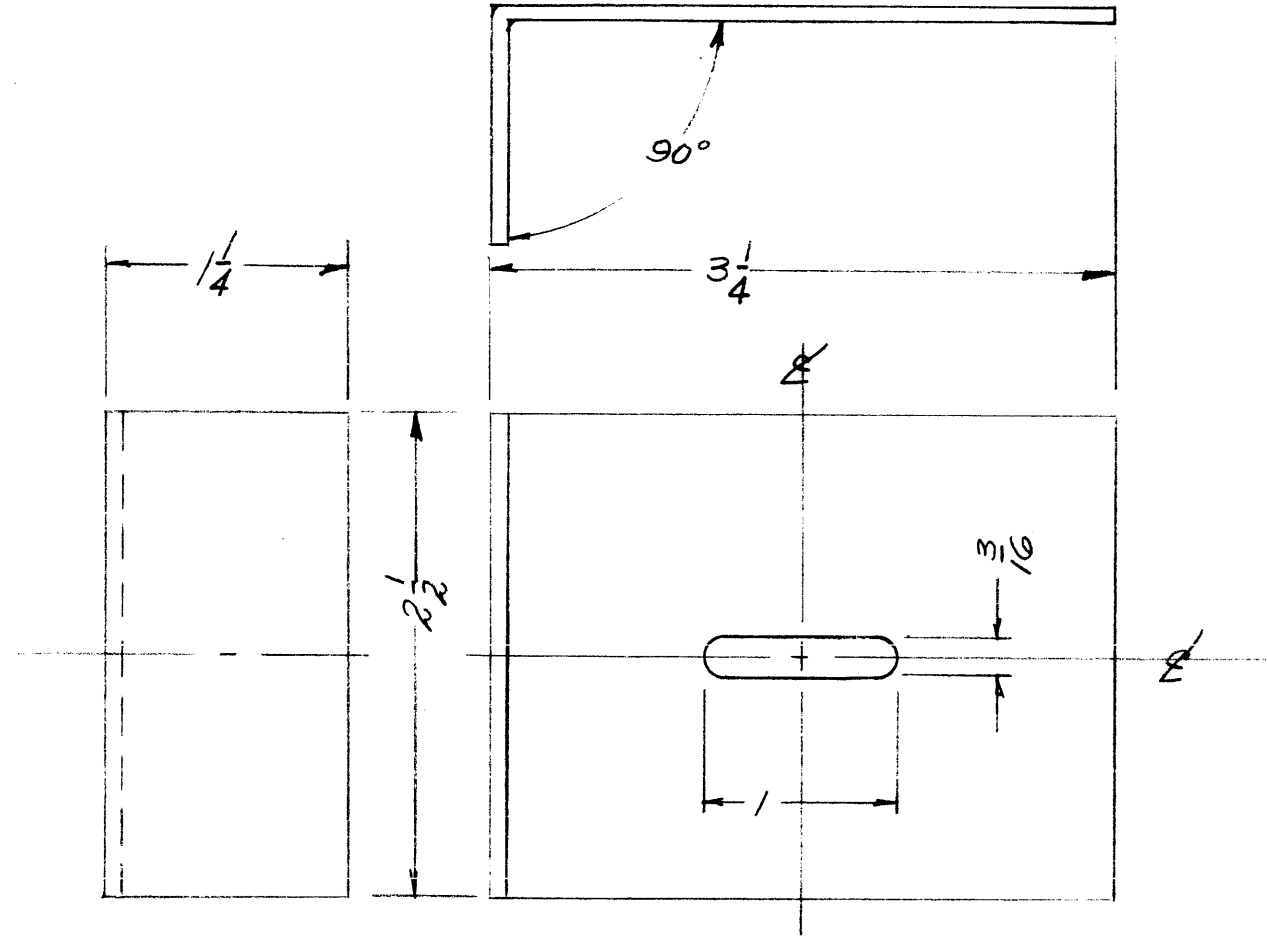


| ISSUE | ITEM | CHANGED FR M | DATE | CH. NO. | DRAFTS | CHECKER | ENG. APP. |
|----------------|------|--------------------------------------|--|---------|--------|---------|-----------|
| B | 1 | 16 13/32 WAS 17 5/32, 27/64 WAS 1/64 | 8.22.64 | 12194 | WJB | @ | |
| A | 1 | ADDED 1/4 x 3/8 SLOTS | 7/31/59 | | P.L. | | |
| TOLERANCES | | | SCALE: | | | | |
| DEC. DIM. ± | | | MAXIMUM ALLOWABLE TOLERANCES HAVE BEEN DETERMINED AND ANY DEVIATIONS WILL BE CAUSE FOR REJECTION: REMOVE ALL BURRS AND HARP EDGES | | | | |
| FRAC. DIM. ± | | | | | | | |
| ANGULAR DIM. ± | | | | | | | |

| | | | | |
|---------------|-------|-------------|-----------|------|
| 1 | RAK-7 | | | |
| REQ. PER UNIT | MODEL | PROJECT NO. | ASSY. NO. | DATE |
| USED ON | | | | |

| REQ. | ITEM | PART NO. | DESCRIPTION | | | SYMBOL |
|------|------|--------------------|------------------------------|----------------|---------|----------------|
| | | 1/8 THK | THE TECHNICAL MATERIEL CORP. | | | |
| | | STOCK SIZE | MAMARONECK, NEW YORK | | | |
| | | ALUMINUM | PANEL BLANK | | | |
| | | MATERIAL | | | | |
| | | 50525-H32 | | | | |
| | | TYPE & TEMPER | HEAT TREAT. SPEC. | DRAWN | CHECKED | FINAL APPROVAL |
| | | See Note | | | | MS-1802 B |
| | | FINISH & SPEC. NO. | ELEC. DE . APP | MECH. DES. APP | | |

MS-1806



NOTICE TO PERSONS RECEIVING THIS DRAWING

THE TECHNICAL MATERIEL CORPORATION claims proprietary right in the material disclosed hereon. This drawing is issued in confidence for engineering information only and may not be reproduced or used to manufacture anything shown hereon without permission from THE TECHNICAL MATERIEL CORPORATION to the user. This drawing is loaned for mutual assistance and is subject to recall at any time.

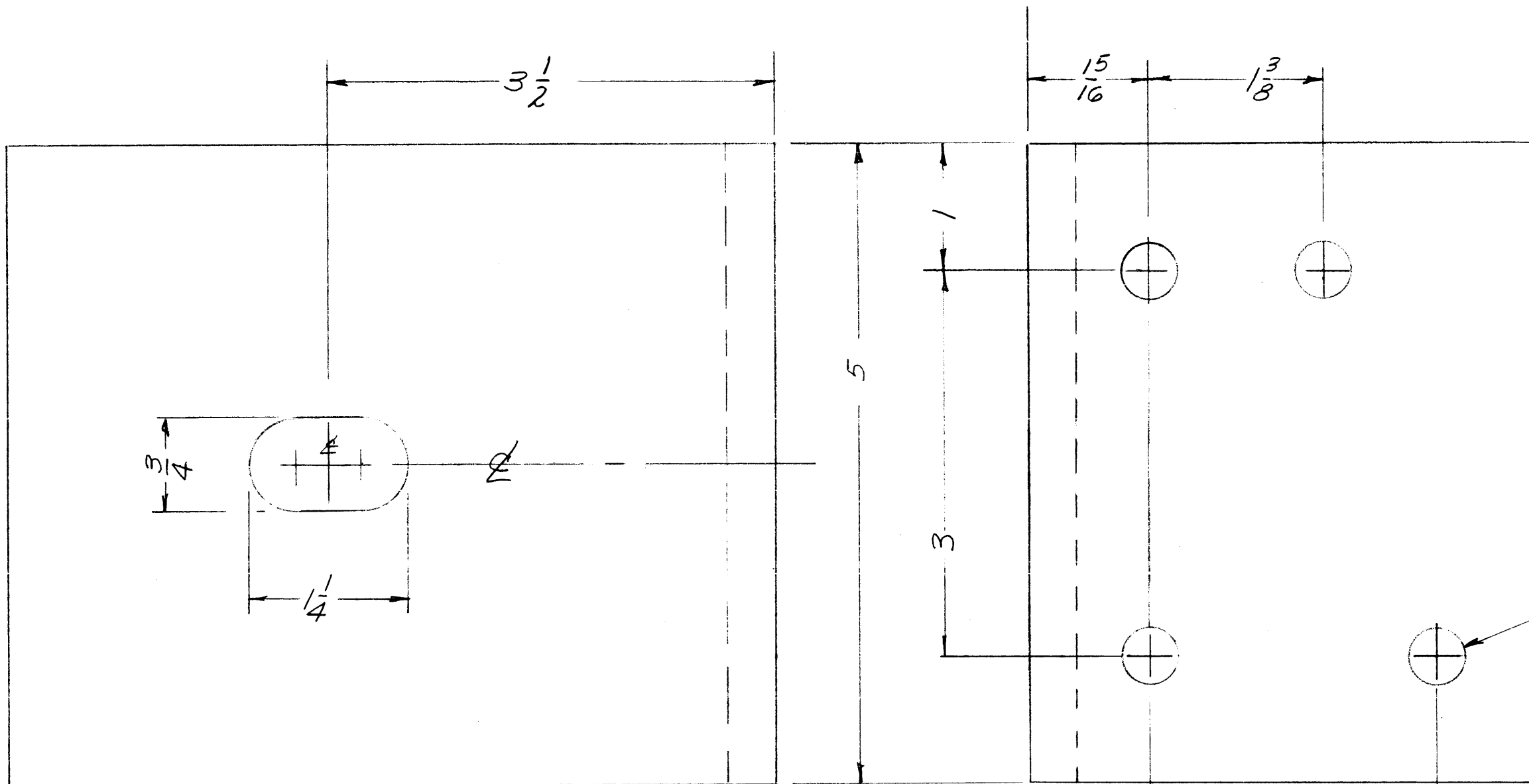
Property of:

THE TECHNICAL MATERIEL CORPORATION
MAMARONECK, NEW YORK

| ISSUE | ITEM | CHAN | ED | FR | M | DATE | CH. NO. | DRAFTS | CHECKER | ENG. APP. |
|---------------------------|------|------|----|----|---|--|---------|--------|---------|-----------|
| TOLERANCE | | | | | | SCALE: <i>1/2"</i> | | | | |
| DEC. DIM. ± | | | | | | MAXIMUM ALLOWABLE TOLERANCES HAVE BEEN DETERMINED AND ANY DEVIATIONS WILL BE CAUSE FOR REJECTION: REMOVE ALL BURRS AND SHARP EDGES | | | | |
| FRAC. DIM. ± <i>1/64</i> | | | | | | | | | | |
| AN ULAR DIM. ± <i>.50</i> | | | | | | | | | | |

| | | | | |
|---------------|---------|-------------|-----------|--------|
| 2 | CONSOLE | | | 6-2-39 |
| REQ. PER UNIT | MODEL | PROJECT NO. | ASSY. NO. | DATE |
| USED ON | | | | |

| REQ. | ITEM | PART NO. | DESCRIPTION | SYMBOL |
|------|------|--------------------|--|-----------------|
| | | .081 THICK | THE TECHNICAL MATERIEL CORP. MAMARONECK, NEW YORK | |
| | | STOCK SIZE | | |
| | | ALUMINUM | BRACKET, EQUIPMENT SUPPORT | |
| | | MATERIAL | | |
| | | 5052-H32 | | |
| | | TYPE & TEMPER | HEATTREAT. SPEC. | DRAWN |
| | | 5404 IRIDIOTE | | CHECKED |
| | | FINISH & SPEC. NO. | ELEC. DES. APP | MECH. DES. APP. |
| | | | | MS-1806 |



THE TECHNICAL MATERIEL CORPORATION
MAMARONECK, NEW YORK

NOTICE TO PERSONS RECEIVING THIS DRAWING
THE TECHNICAL MATERIEL CORPORATION claims proprietary right in the material disclosed hereon. This drawing is issued in confidence for engineering information only and may not be reproduced or used to manufacture anything shown herein without permission from THE TECHNICAL MATERIEL CORPORATION to the user. This drawing is loaned for mutual assistance and is subject to recall at any time.

(4) 7/16 (.438) DIA. HOLE

ROUND EDGES

FINISH NOTE :
DEGREASE & PREPARE SURFACE
FOR FOLLOWING :

REF : OPPOSITE SIDE (MS-1809)
REF. TMC-MS-1456 SHEET 4

| TMC PART No. | PRIME OR DIP | FINISH |
|--------------|--------------------|--|
| MS-1808-1 | 5114 ZINC CHROMATE | S220 THIN CAF BLUE GRAY SMOOTH ENAM |
| MS-1808-2 | 5114 ZINC CHROMATE | 5444 UMBER |

| ISSUE | ITEM | CHANGED FROM | DATE | CH. NO. | DRAFTS | CHECKER | ENG. APP. |
|-------|------|--|---------|---------|--------|--------------------|--------------------|
| A | | ADDED - 1 & - 2 (ADDED FINISH CAET) | 3/24/39 | 1225 | | <i>[Signature]</i> | <i>[Signature]</i> |

TOLERANCES: DEC. DIM. ±, FRAC. DIM. ± 1/64, ANGULAR DIM. ±

SCALE: *1/2*

MAXIMUM ALLOWABLE TOLERANCES HAVE BEEN DETERMINED AND ANY DEVIATIONS WILL BE CAUSE FOR REJECTION. REMOVE ALL BURRS AND SHARP EDGES

| REQ. PER UNIT | MODEL | PROJECT NO. | ASSY. NO. | DATE |
|---------------|----------|-------------|-----------|--------|
| 1 | 9 PT-10K | AUX-FR | | 6-3-39 |

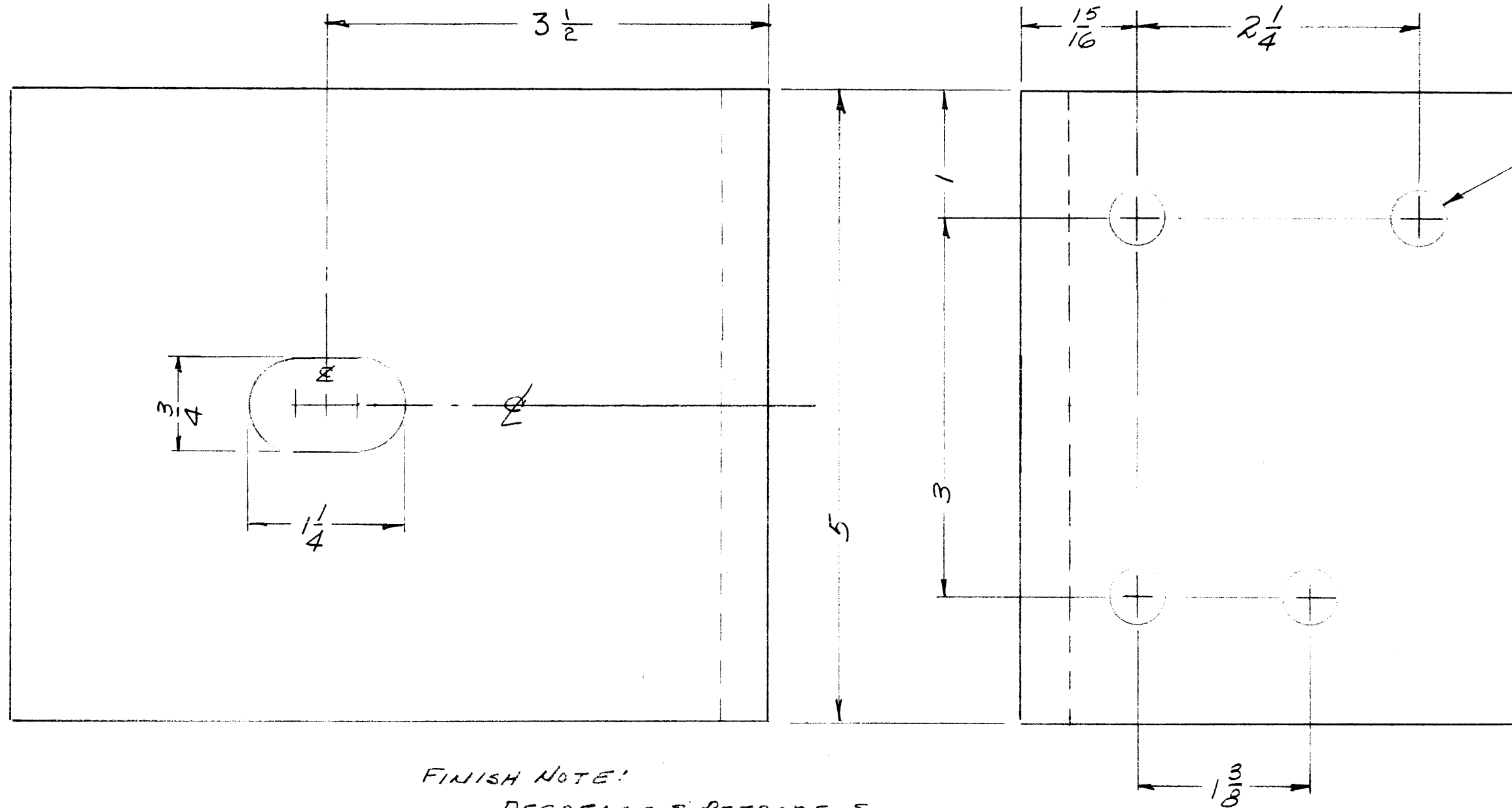
USED ON

| REQ. ITEM | PART NO. | DESCRIPTION | SYMBOL |
|-----------|--------------------|----------------------------------|-----------------|
| | 6X4X 3/8 | STOCK SIZE | |
| | STRUCT. STEEL | BRACKET, MOUNTING, SHOCK MAIN FR | |
| | MATERIAL | | |
| | TYPE & TEMPER | HEAT TREAT. SPEC. | |
| | FINISH & SPEC. NO. | ELEC. DES. APP. | MECH. DES. APP. |

THE TECHNICAL MATERIEL CORP. MAMARONECK, NEW YORK

DRAWN: *[Signature]*, CHECKED: *[Signature]*, FINAL APPROVAL: *[Signature]*

MS-1808 A



(4) 7/16 (.438) DIA. HOLES

NOTICE TO PERSONS RECEIVING THIS DRAWING
 THE TECHNICAL MATERIEL CORPORATION claims proprietary right in the material disclosed hereon. This drawing is issued in confidence for engineering information only and may not be reproduced or used to manufacture anything shown hereon without permission from THE TECHNICAL MATERIEL CORPORATION to the user. This drawing is loaned for mutual assistance and is subject to recall at any time.

Property of:
 THE TECHNICAL MATERIEL CORPORATION
 MAMARONECK, NEW YORK

ROUND EDGES

FINISH NOTE:
 DEGREASE & PREPARE SURFACE
 FOR FOLLOWING:

REF: OPPOSITE SIDE (MS-1808)
 REF THC MS-1455 SHEET-2

| TMC PART NO. | PRIME OR DIP | FINISH |
|--------------|--------------------|--------------------------------------|
| MS-1809-1 | 5/14 ZINC CHROMATE | S220 TMC RCAF BLUE GRAY 3H DOTH ENAM |
| MS-1809-2 | 5/14 ZINC CHROMATE | S444-UMBER |

| ISSUE ITEM | CHANGED FROM | DATE | CH. NO. | DRAFTS | CHECKER | ENG. APP. |
|------------|------------------------------------|---------|---------|--------|---------|-----------|
| A | ADDED - 1 E-2 (RODED FINISH CHART) | 8/26/59 | 1225 | | | |

TOLERANCES: DEC. DIM. ± 1/64
 FRAC. DIM. ± 1/64
 ANGULAR DIM. ±

SCALE: *AS SHOWN*

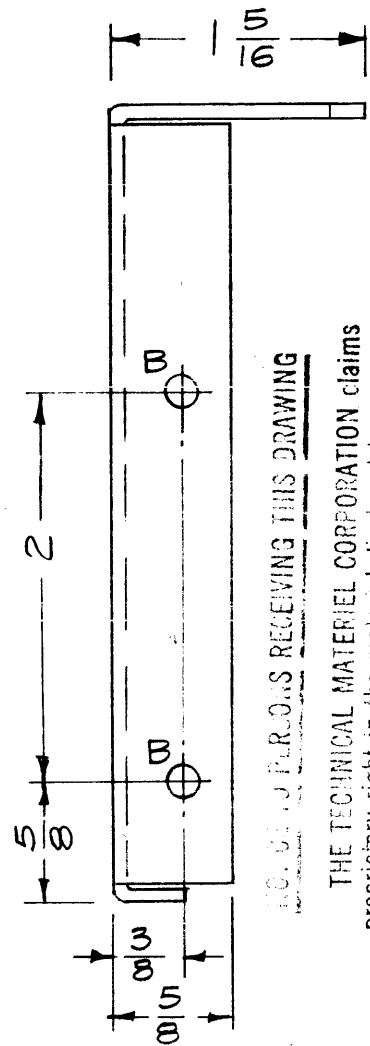
MAXIMUM ALLOWABLE TOLERANCES HAVE BEEN DETERMINED AND ANY DEVIATIONS WILL BE CAUSE FOR REJECTION. REMOVE ALL BURRS AND SHARP EDGES

| REQ. PER UNIT | MODEL | PROJECT NO. | ASS'Y. NO. | DATE |
|---------------|---------|-------------|------------|--------|
| 1 | GPT-10K | MAIN FR | | 6-3-59 |

USED ON

| REQ. ITEM | PART NO. | DESCRIPTION | SYMBOL |
|--------------------|-------------------|---|-----------------|
| 6 X 4 X 3/8 | | THE TECHNICAL MATERIEL CORP. MAMARONECK, NEW YORK | |
| STRUCT. STEEL | | BRACKET, MOUNTING, SHOCK Aux. FR | |
| TYPE & TEMPER | HEAT TREAT. SPEC. | DRAWN | CHECKED |
| FINISH & SPEC. NO. | | ELEC. DES. APP. | MECH. DES. APP. |

MS-1809 A

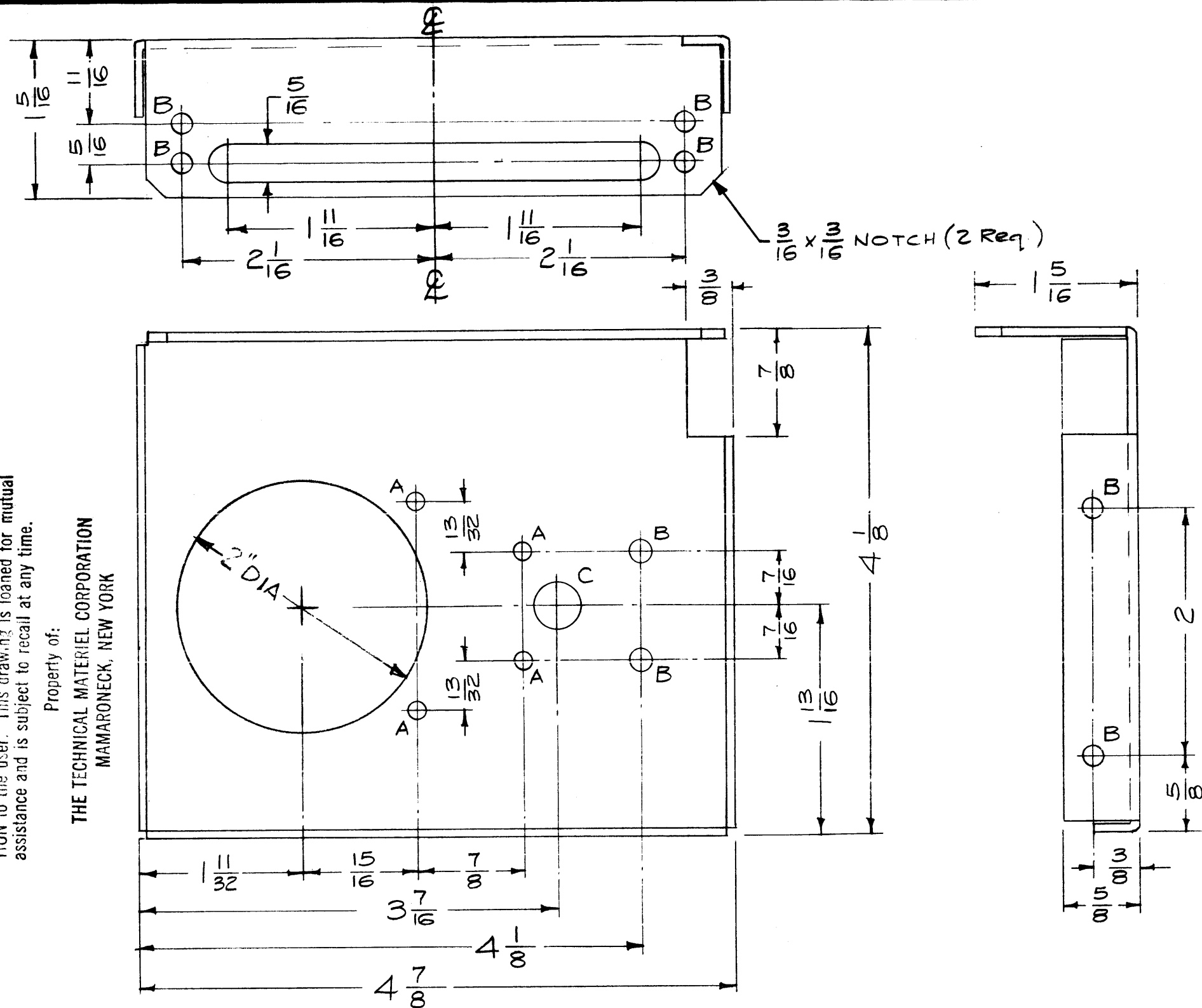


PROPERTY OF P.L.R. Co. RECEIVING THIS DRAWING

THE TECHNICAL MATERIEL CORPORATION claims proprietary right in the material disclosed herein. This drawing is issued in confidence for engineering information only and may not be reproduced or used to manufacture anything shown hereon without permission from THE TECHNICAL MATERIEL CORPORATION to the user. This drawing is loaned for mutual assistance and is subject to recall at any time.

Property of:

THE TECHNICAL MATERIEL CORPORATION
MAMARONECK, NEW YORK



$\frac{3}{16} \times \frac{1}{16}$ NOTCH (2 Req.)

- A - $\frac{9}{64}$ (.140) D. 4 Req.
- B - $\frac{11}{64}$ (.171) D. 10 Req.
- C - $\frac{3}{8}$ (.375) D. 1 Req.
- D - 2" DIA 1 REQ.

Ref: 2LD-598

| ISSUE | ITEM | CHANGED FROM | DATE | CH. NO. | DRAFTS | CHECKER | ENG. APP. |
|-------|------|---|----------|---------|--------|---------|-----------|
| D | | DIA. "D" HOLE WAS $\frac{1}{2}$ | 8-6-79 | 21697 | GDL | | |
| C | | ADDED "D" HOLE | 6/3/69 | 19473 | GE | JL | FB |
| B | 1 | STOCK SIZE ADDED MAT. & FINISH ADDED | 10/14/59 | | 16 | JL | MB |
| A | 1 | Completely Redrawn & Revised | 9/29/59 | 1352 | 16 | JL | MB |

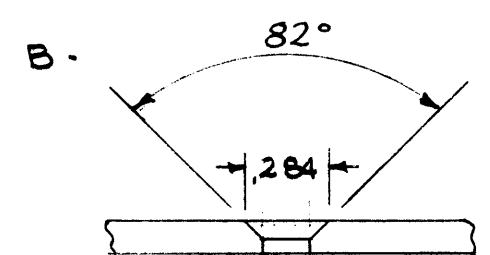
| | | | |
|-------------------------------|---|---------------------|----------------|
| TOLERANCES | | SCALE: Do Not Scale | |
| DEC. DIM. \pm | MAXIMUM ALLOWABLE TOLERANCES HAVE BEEN DETERMINED AND ANY DEVIATIONS WILL BE CAUSE FOR REJECTION. | 1 | ATS-50/70 TU-2 |
| FRAC. DIM. $\pm \frac{1}{64}$ | REMOVE ALL BURRS AND SHARP EDGES | REQ. PER UNIT | MODEL |
| ANGULAR DIM. \pm | | | PROJECT NO. |
| | | | ASS'Y. NO. |
| | | | DATE |

| | |
|---------|---------|
| 9-29-59 | USED ON |
|---------|---------|

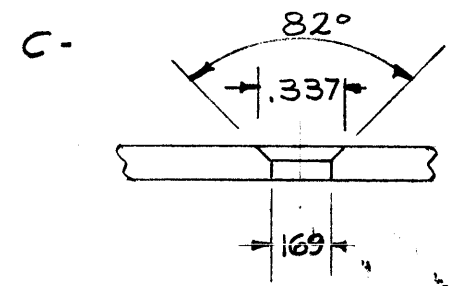
| REQ. ITEM | PART NO. | DESCRIPTION | SYMBOL |
|--------------------|-------------------|------------------------------|-----------|
| | .064 Thk | THE TECHNICAL MATERIEL CORP. | |
| | STOCK SIZE | MAMARONECK, NEW YORK | |
| | Aluminum | PLATE, MOTOR LIMIT SWITCHES | |
| MATERIAL | | | |
| 5052 H32 | | 16 9/29/59 | JL MB |
| TYPE & TEMPER | HEAT TREAT. SPEC. | RE DRAWN | CHECKED |
| 5404 - Iridite | | | |
| YELLOW | | | |
| FINISH & SPEC. NO. | ELEC. DES. APP. | MECH. DES. APP. | |
| | | | MS-1814 D |

MS-1815 D

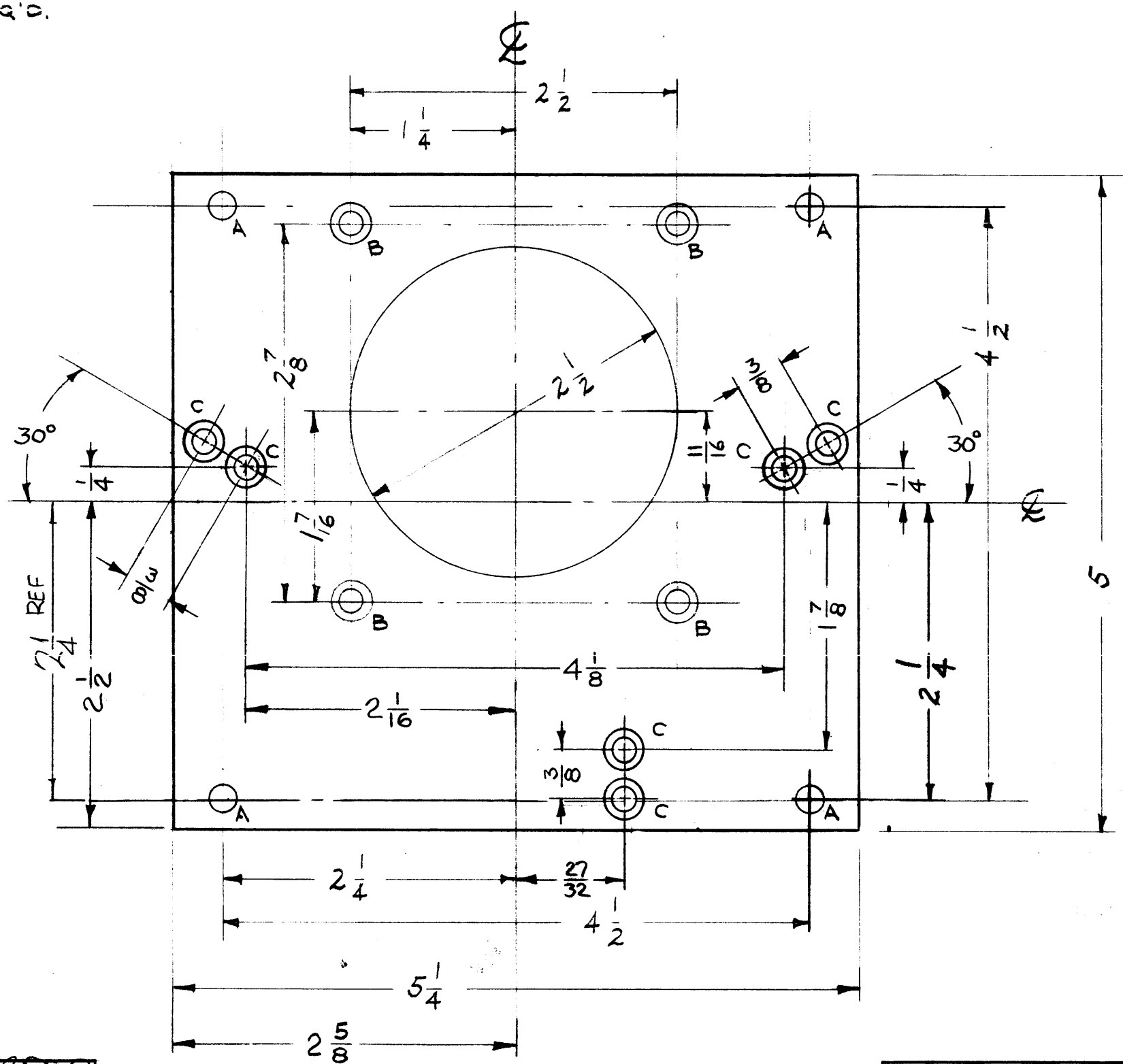
A - 13/64 (.203) DIA 4 REQ'D.



DRILL 6 C'SINK FOR 6-32 FHS 4 REQ'D.



DRILL 6 C'SINK FOR 8-32 6 - REQ'D.



NOTICE TO PERSONS RECEIVING THIS DRAWING

THE TECHNICAL MATERIEL CORPORATION claims proprietary right in the material disclosed hereon. This drawing is issued in confidence for engineering information only and may not be reproduced or used to manufacture anything shown hereon without permission from THE TECHNICAL MATERIEL CORPORATION to the user. This drawing is loaned for mutual assistance and is subject to recall at any time.

Property of: THE TECHNICAL MATERIEL CORPORATION MAMARONECK, NEW YORK

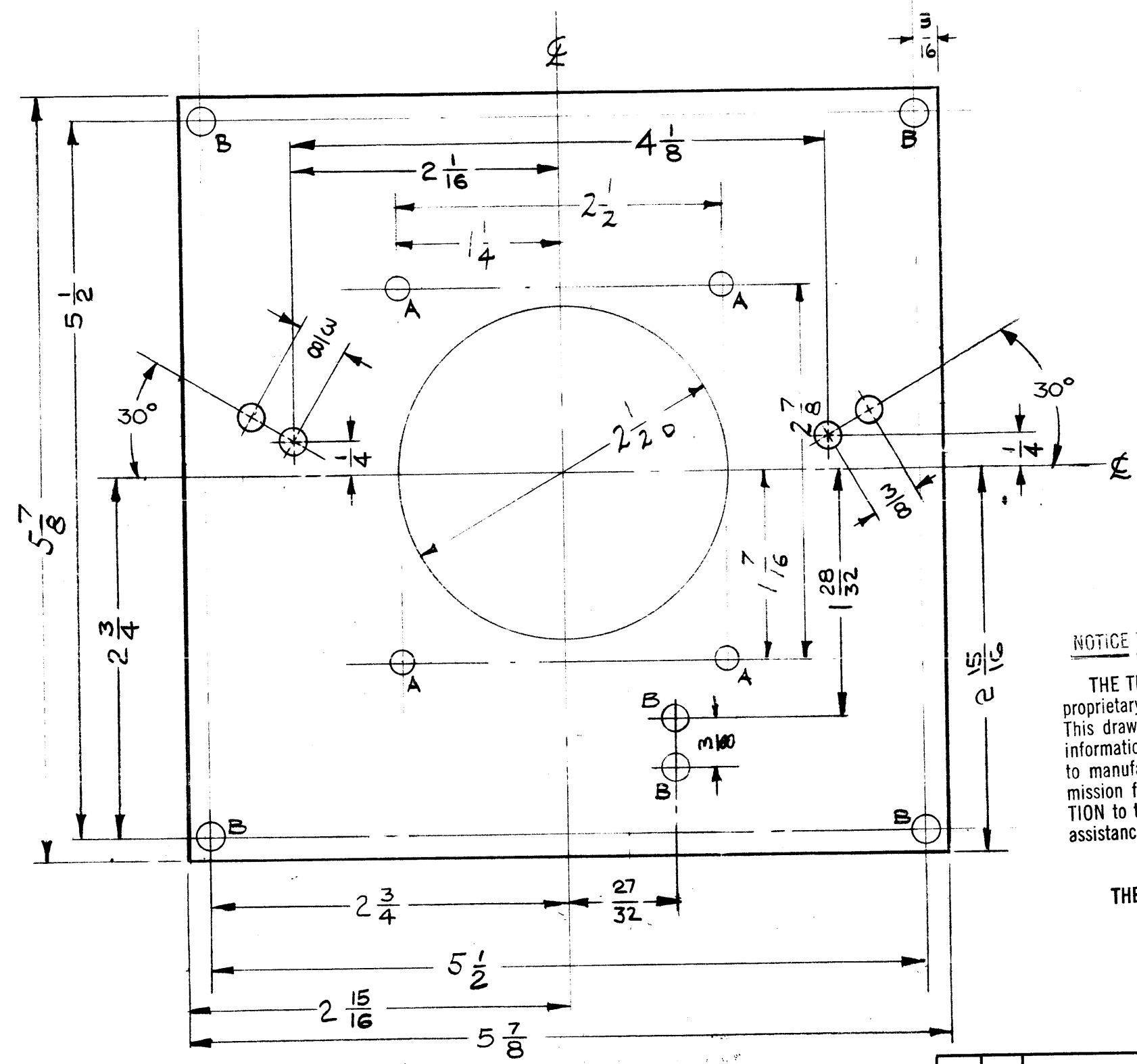
| D | ADDED 11/16 DIM | 11/9/66 | 17215 | RME | JCS | JCS | |
|-------------------|-------------------------|---|-------|--------|--------|---------|-----------|
| C | 1 6"C-HOLES RELOCATED | 7.29.64 | 11952 | W/B | JCS | MM | |
| B | 2 Added 2" Hole (Moved) | 9/28/59 | 1348 | 16 | JCS | AMB | |
| A | 1 Moved two "C" Holes | 9/22/59 | 1318 | 16 | JCS | AMB | |
| ISSUE | ITEM | CHAN ED FROM | DATE | H. NO. | DRAFTS | CHECKER | ENG. APP. |
| TOLERANCES | | SCALE: FULL | | | | | |
| DEC. DIM. ± | | MAXIMUM ALLOWABLE TOLERANCE HAVE BEEN DETERMINED AND ANY DEVIATIONS WILL BE CAUSE FOR REJECTION: REMOVE ALL BURRS AND SHARP EDGES | | | | | |
| FRAC. DIM. ± 1/64 | | | | | | | |
| ANGULAR DIM. ± | | | | | | | |

| | | | | | | | |
|---------------|---|-------|----------------|-------------|--------|------|---------|
| REQ. PER UNIT | 1 | MODEL | ATS-50(70) T42 | PROJECT NO. | A-1769 | DATE | 6-12-59 |
| USED ON | | | | | | | |

| REQ. ITEM | PART NO. | DESCRIPTION | SYMB L |
|------------------|------------------|------------------------------|-----------------|
| 1/8 TACK | | THE TECHNICAL MATERIEL CORP. | |
| | | MAMARONECK, NEW YORK | |
| ALUMINUM | | PLATE, COIL MTS., FRONT | |
| MATERIAL | | | |
| 5052 H32 | | DATE: 6.12.59 | AMB |
| TYPE & TEMPER | HEATTREAT. SPEC. | DRAWN | CHECKED |
| 5404-1R DITE | | JCS | AMB |
| FINISH SPEC. NO. | | ELEC. DES. APP. | MECH. DES. APP. |
| | | MS-1815 | D. |

MS-1816 B

| HOLES | REQ'D |
|--------------------|-------|
| A - 11/64 (.171) Ø | 4 |
| B - 13/64 (.203) Ø | 10 |



NOTICE TO PERSONS RECEIVING THIS DRAWING

THE TECHNICAL MATERIEL CORPORATION claims proprietary right in the material disclosed hereon. This drawing is issued in confidence for engineering information only and may not be reproduced or used to manufacture anything shown hereon without permission from THE TECHNICAL MATERIEL CORPORATION to the user. This drawing is loaned for mutual assistance and is subject to recall at any time.

Property of:
THE TECHNICAL MATERIEL CORPORATION
 MAMARONECK, NEW YORK

| REV | ITEM | DESCRIPTION | DATE | CH. NO. | DRAFTS | CHECKER | ENG. APP. |
|-----|------|-----------------------|---------|---------|--------|-------------|-------------|
| B | 1 | 4 "B"-HOLES RELOCATED | 7.29.64 | 11952 | WJB | [Signature] | [Signature] |
| A | 2 | B HOLE MOVED | 9/22/59 | 1318 | KG | [Signature] | [Signature] |
| | 1 | B HOLE MOVED | | | | | |

| DEC. DIM. ± | FRAC. DIM. ± | ANGULAR DIM. ± |
|-------------|--------------|----------------|
| | 1/64 | |

SCALE: FULL

MAXIMUM ALLOWABLE TOLERANCES HAVE BEEN DETERMINED AND ANY DEVIATIONS WILL BE CAUSE FOR REJECTION: REMOVE ALL BURRS AND SHARP EDGES

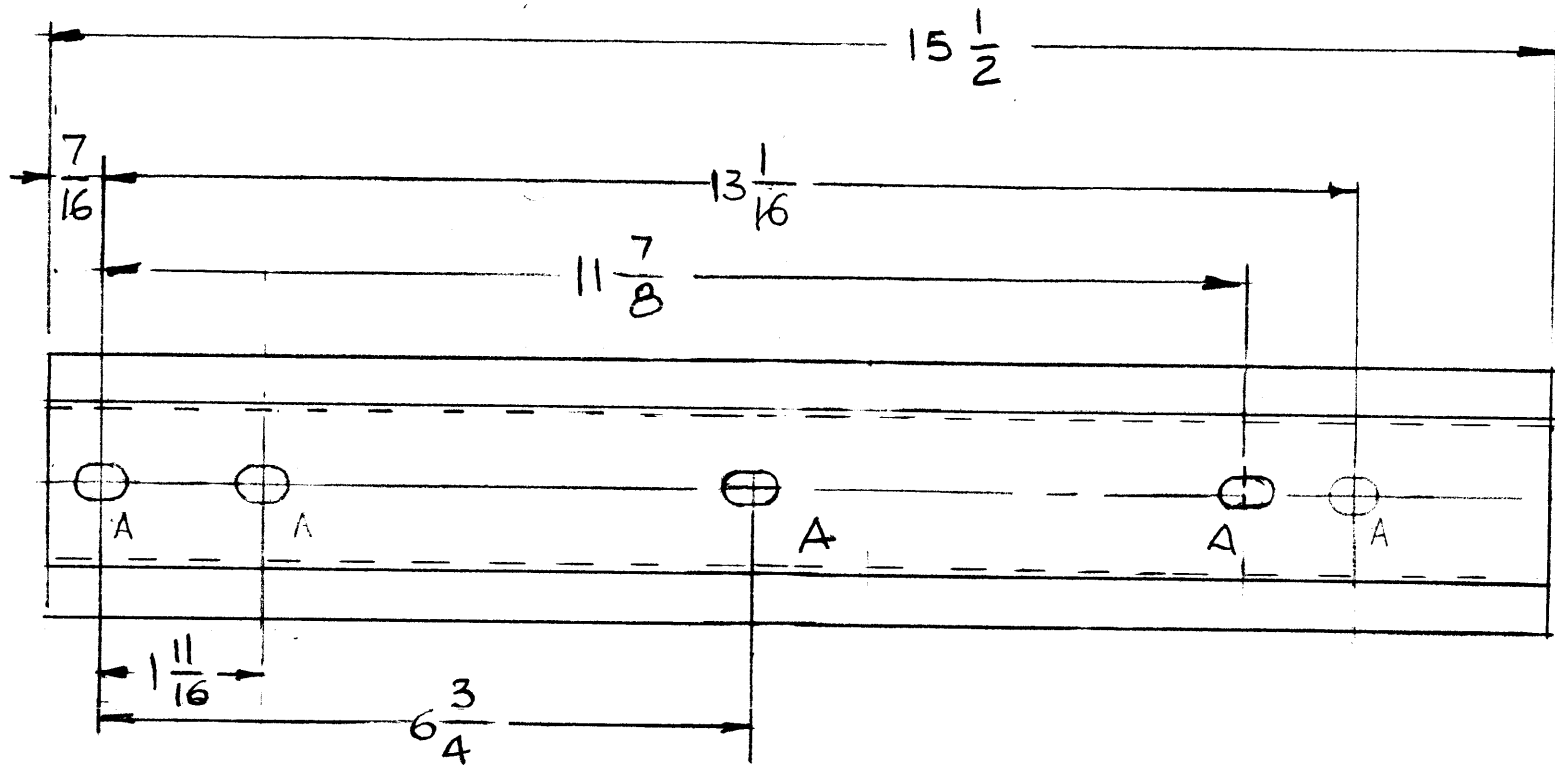
| REQ. PER UNIT | MODEL | PR JECT NO. | ASSY. NO. | DATE |
|---------------|-----------------|-------------|-----------|---------|
| 1 | ATS-50 (70) TU2 | | A-1769 | 6-12-59 |

USED ON

| REQ. ITEM | PART NO. | DESCRIPTION | SYMBOL |
|-----------|-----------------------|---|----------------|
| | 1/8 THICK STOCK SIZE | THE TECHNICAL MATERIEL CORP. MAMARONECK, NEW YORK | |
| | ALUMINUM MATERIAL | PLATE, COIL MTS., REAR | |
| 5052 H32 | | FOR FILE 6-12-59 | [Signature] |
| | | DRAWN | CHECKED |
| | | FINAL APPROVAL | |
| | 5404 - IRIDITE FINISH | | |
| | | ELEC. DES. APP | MECH. DES. APP |

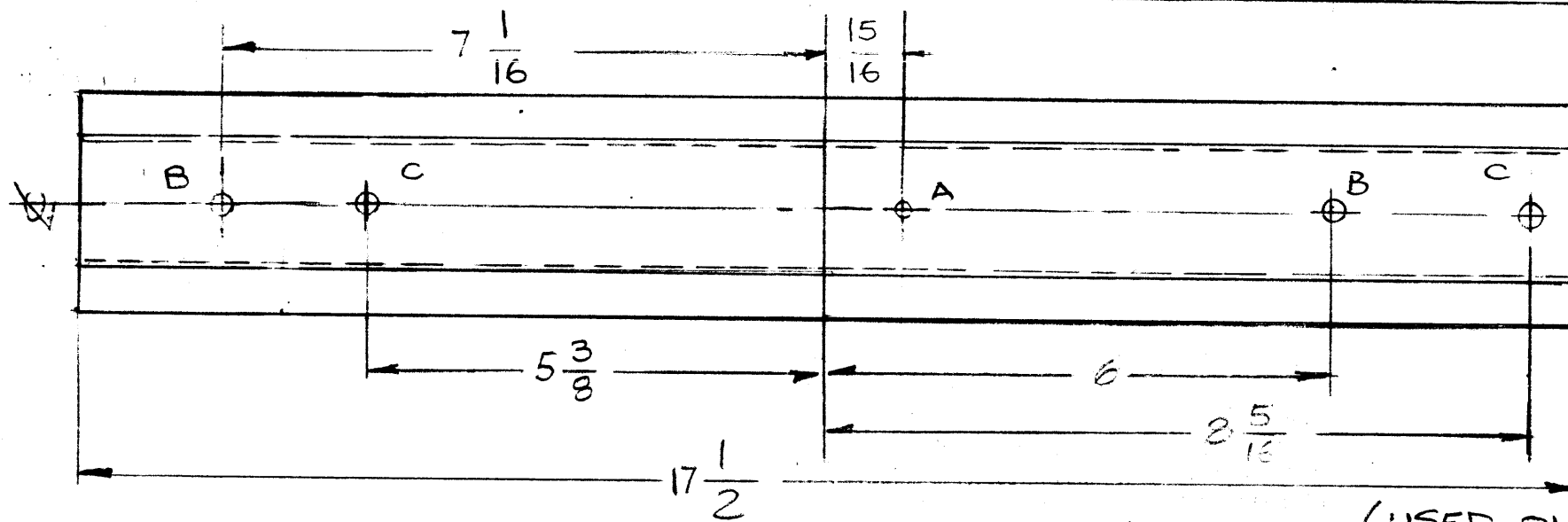
MS-1820 E

HOLE A-3/8 X 1/2 SLOT HOLE REQ'D 5



MS-1820-2

(USED ON ATS-2B)



MS-1820-1

(USED ON ATS 2/2A)

HOLE
 A-5/16 (.312D) 1REQ.
 B-11/32 (.343D) 2REQ.
 C-3/8 DIA 2REQ

| | | | | | | | |
|-------|------|---|----------|---------|--------|---------|-----------|
| E | 1 | ALL HOLES RELOCATED DIM 15 1/2 WAS 16 1/4 | 11-1-79 | 21734 | R.D.L. | RU | JM |
| D | 2 | MS 1820-2 ADDED | 5-23-79 | 21492 | | | QJA |
| C | 1 | TWO "C" HOLES ADDED | 10-14-60 | 3157 | OHF | | |
| B | 1 | TWO "A" HOLES DELETED | 10-12-59 | 1408 | K | | |
| A | 1 | "A" Hole WAS 9/32 D. | 9/14/59 | 1292 | DM | JW | |
| A | 2 | "A" HOLES DELETED 9/16 LIP WAS 5/8 | | | | | |
| ISSUE | ITEM | CHANGED FR M | DATE | CH. NO. | DRAFTS | CHECKER | ENG. APP. |

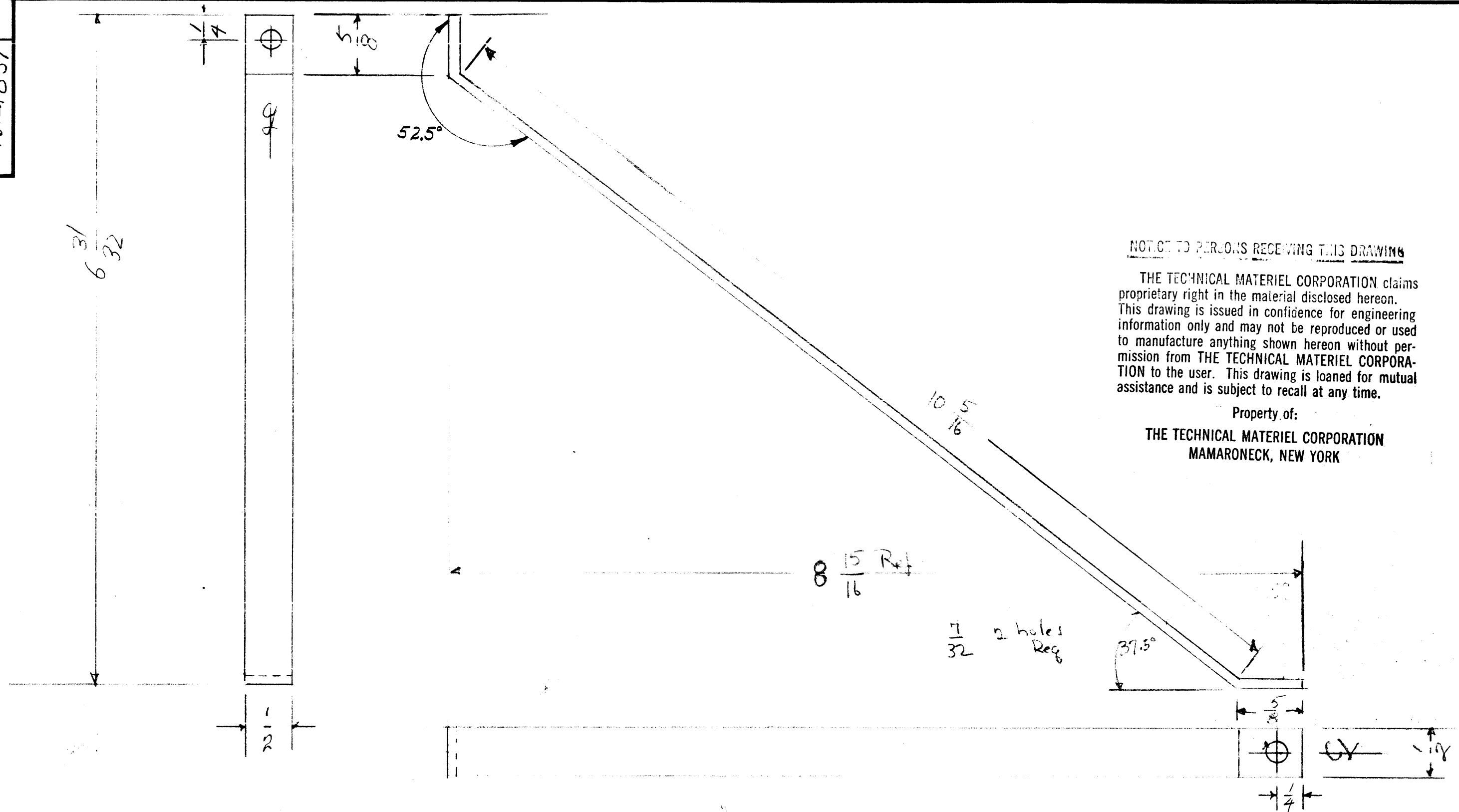
Property of:
 THE TECHNICAL MATERIEL CORPORATION
 MAMARONECK, NEW YORK

| | | | |
|------------------|------------------|------------------------------|----------------|
| REQ. ITEM | PART NO. | DESCRIPTION | SYMBOL |
| .081 | | THE TECHNICAL MATERIEL CORP. | |
| STOCK SIZE | | MAMARONECK, NEW YORK | |
| ALUMINUM | | BRACKET, MOUNTING PLATE | |
| MATERIAL | | | |
| 5052-H32 | | | |
| TYPE & TEMPER | HEATTREAT. SPEC. | DRAWN | CHECKED |
| S404 IRIDITE | | SAA | |
| FINISH SPEC. NO. | | ELEC. DES. APP | MECH. DES. APP |
| | | MS-1820 | E |

| | | | | | | |
|-------------------|--|---------------|-------|---------------|-----------|---------|
| TOLERANCES | SCALE: | 2 | TU-2B | ATS-2B | MS1820-2 | 8-27-79 |
| DEC. DIM. ± | MAXIMUM ALLOWABLE TOLERANCES HAVE BEEN DETERMINED AND ANY DEVIATIONS WILL BE CAUSE FOR REJECTION. REMOVE ALL BURRS AND SHARP EDGES | 2 | TU-2 | ATS-2 (50/70) | MS1820-1 | 6-10-59 |
| FRAC. DIM. ± 1/64 | | REQ. PER UNIT | MODEL | PROJECT NO. | A SY. NO. | DATE |
| ANGULAR DIM. ± | | | | | | |

USED ON

MS-1837



NOTICE TO PERSONS RECEIVING THIS DRAWING

THE TECHNICAL MATERIEL CORPORATION claims proprietary right in the material disclosed hereon. This drawing is issued in confidence for engineering information only and may not be reproduced or used to manufacture anything shown hereon without permission from THE TECHNICAL MATERIEL CORPORATION to the user. This drawing is loaned for mutual assistance and is subject to recall at any time.

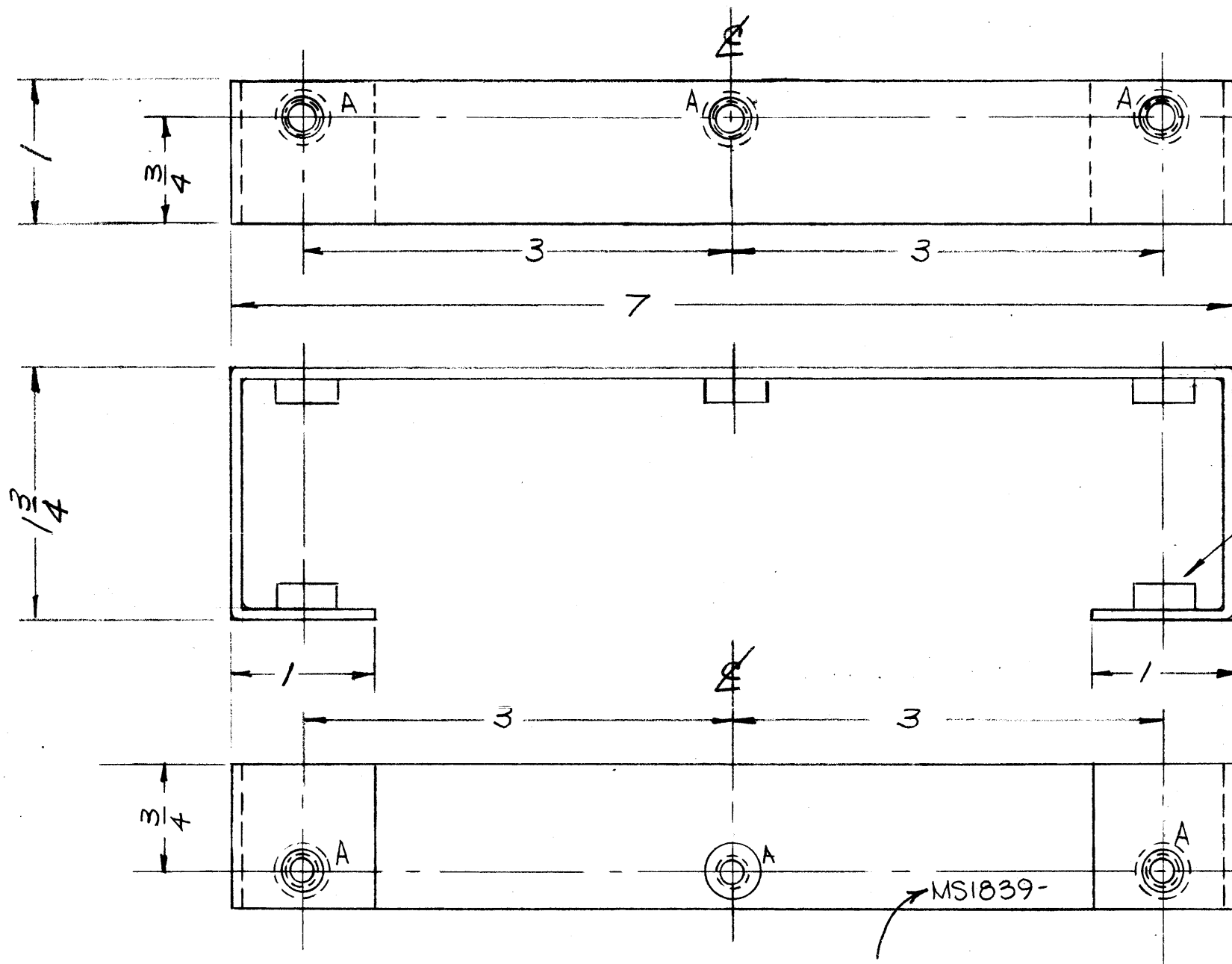
Property of:
THE TECHNICAL MATERIEL CORPORATION
 MAMARONECK, NEW YORK

Note: Finish
 S 105 Cad. Plate .0005
 S 424 ipidite yellow

| ISSUE | ITEM | CHANGED FROM | DATE | CH. NO. | DRAFTS | CHECKER | ENG. APP. |
|----------------|------|--------------|---|---------|--------|---------|-----------|
| TOLERANCES | | | SCALE: | | | | |
| DEC. DIM. ± | | | MAXIMUM ALLOWABLE TOLERANCES HAVE BEEN DETERMINED AND ANY DEVIATIONS WILL BE CAUSE FOR REJECTION: | | | | |
| FRAC. DIM. ± | | | REM VE ALL BURRS AND SHARP EDGE | | | | |
| ANGULAR DIM. ± | | | | | | | |

| | | | | | |
|---------------|-------|-------------|-----------|------|--|
| 2 | RAK-7 | | ME | | |
| REQ. PER UNIT | MODEL | PROJECT NO. | ASSY. NO. | DATE | |
| USED ON | | | | | |

| REQ. ITEM | PART NO. | DESCRIPTION | SYMBOL |
|--------------------|----------|------------------------------|--------|
| 1/2 x 1/8 | | THE TECHNICAL MATERIEL CORP. | |
| STOCK SIZE | | MAMARONECK, NEW YORK | |
| A18 Steel. | | Support Regulator | |
| MATERIAL | | | |
| TYPE & TEMPER | | al | al |
| HEATTREAT. SPEC. | | | |
| DRAWN | | | |
| CHECKED | | | |
| FINAL APPROVAL | | | |
| FINISH & SPEC. NO. | | | |
| ELEC. DES. APP | | | |
| MECH. DES. APP | | | |



HOLES:
A-.344-.347 DIA. (5REQ.)

① MOUNT IN ALL
"A" HOLES AFTER
FINISHING.

NOTICE TO PERSONS RECEIVING THIS DRAWING

THE TECHNICAL MATERIEL CORPORATION claims proprietary right in the material disclosed hereon. This drawing is issued in confidence for engineering information only and may not be reproduced or used to manufacture anything shown hereon without permission from THE TECHNICAL MATERIEL CORPORATION to the user. This drawing is loaned for mutual assistance and is subject to recall at any time.

Property of:
THE TECHNICAL MATERIEL CORPORATION
MAMARONECK, NEW YORK

MARK TMC PT
NO. $\frac{1}{8}$ HIGH
GOTHIC, W/LATEST
REV. LETTER.

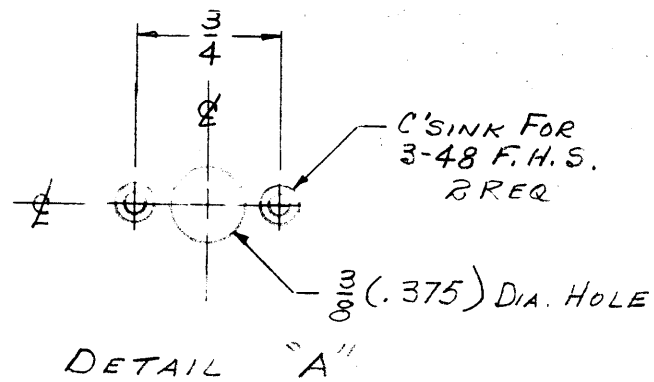
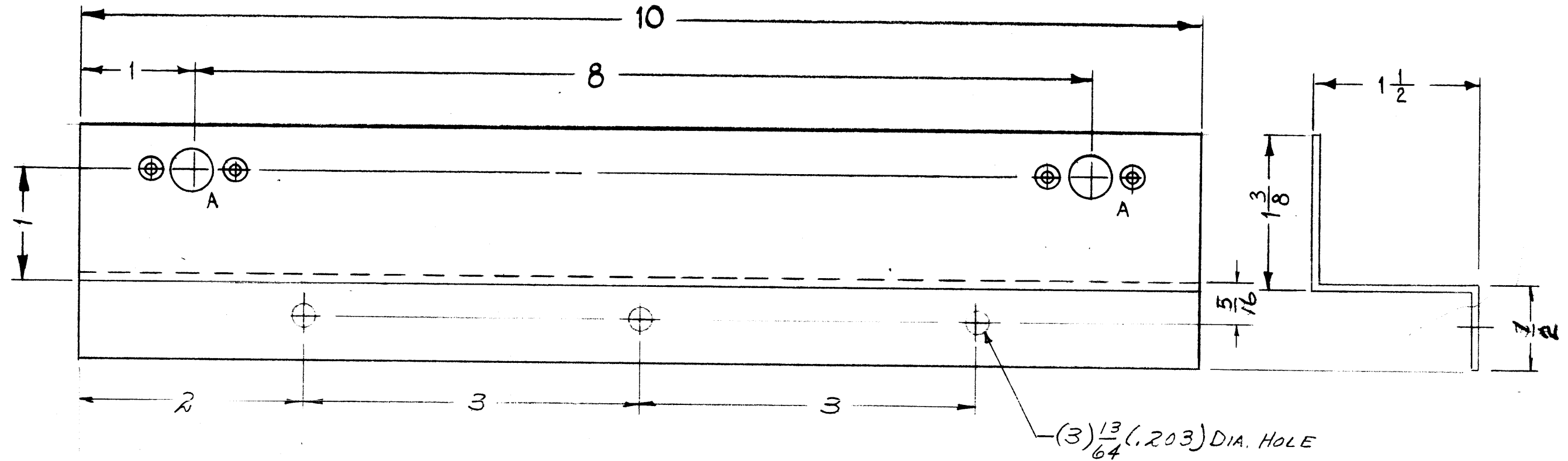
| ISSUE ITEM | CHANGED FROM | DATE | CH. NO. | DRAFTS | CHECKER | ENG. APP. |
|------------|----------------------------------|---------|---------|--------|---------|-----------|
| B | IT IS CLARIFIED, ADD TMC PT. # | 3-16-67 | 17979 | MS | JCS | |
| A 1 | HOLES RELOCATED WERE ON Σ | 9-10-59 | 1297 | PS | file | |

| | | | |
|---------------------------------|--|---|--|
| TOLERANCES | | SCALE: $\frac{1}{2}$ | |
| DEC. DIM. \pm | | MAXIMUM ALLOWABLE TOLERANCES HAVE BEEN DETERMINED AND ANY DEVIATIONS WILL BE CAUSE FOR REJECTION. REMOVE ALL BURR AND SHARP EDGES | |
| FRAC. DIM. \pm $\frac{1}{64}$ | | | |
| AN ULAR DIM. \pm | | | |

| | | | | |
|---------------|---------|-------------|-----------|------|
| 2 | GPT-10K | AUX. FR | | |
| REQ. PER UNIT | MODEL | PROJECT NO. | ASSY. NO. | DATE |
| USED ON | | | | |

| | | | | |
|-----------|----------|--------------------------|--|-------------------|
| 5 | 1 | NT-129-420-4 | NUT, PLAIN, SPLINE | A |
| REQ. ITEM | PART NO. | | DESCRIPTION | SYMBOL |
| | | .081 THICK STOCK SIZE | THE TECHNICAL MATERIEL CORP. MAMARONECK, NEW YORK | |
| | | ALUMINUM | BRACKET, RESISTOR | |
| | | MATERIAL | | |
| | | 5052-H32 | TYPE & TEMPER | HEATTREAT. SPEC. |
| | | 5404-1 | IRIDITE | FINI H & SPEC. N. |
| | | | DRAWN | CHECKED |
| | | | | FINAL APPR VAL |
| | | | | MS1839 B |

MS-1841 A



INSIDE RADIUS METAL THICKNESS

NOTICE TO PERSONS RECEIVING THIS DRAWING

THE TECHNICAL MATERIEL CORPORATION claims proprietary right in the material disclosed hereon. This drawing is issued in confidence for engineering information only and may not be reproduced or used to manufacture anything shown hereon without permission from THE TECHNICAL MATERIEL CORPORATION to the user. This drawing is loaned for mutual assistance and is subject to recall at any time.

Property of:
THE TECHNICAL MATERIEL CORPORATION
MAMARONECK, NEW YORK

| ISSUE | ITEM | CHANGED FROM | DATE | CH. NO. | DRAFTS | CHECKER | ENG. APP. |
|-------|------|--------------------|---------|---------|--------|---------|-----------|
| A | 2 | 1 3/8 DIM WAS 3/4" | 3-23-61 | AAA7 | M.A.G. | JOB | DR |
| | 1 | 1" DIM WAS 3/8" | | | | | |

TOLERANCES: DEC. DIM. ± 1/64, FRAC. DIM. ± 1/64, ANGULAR DIM. ±

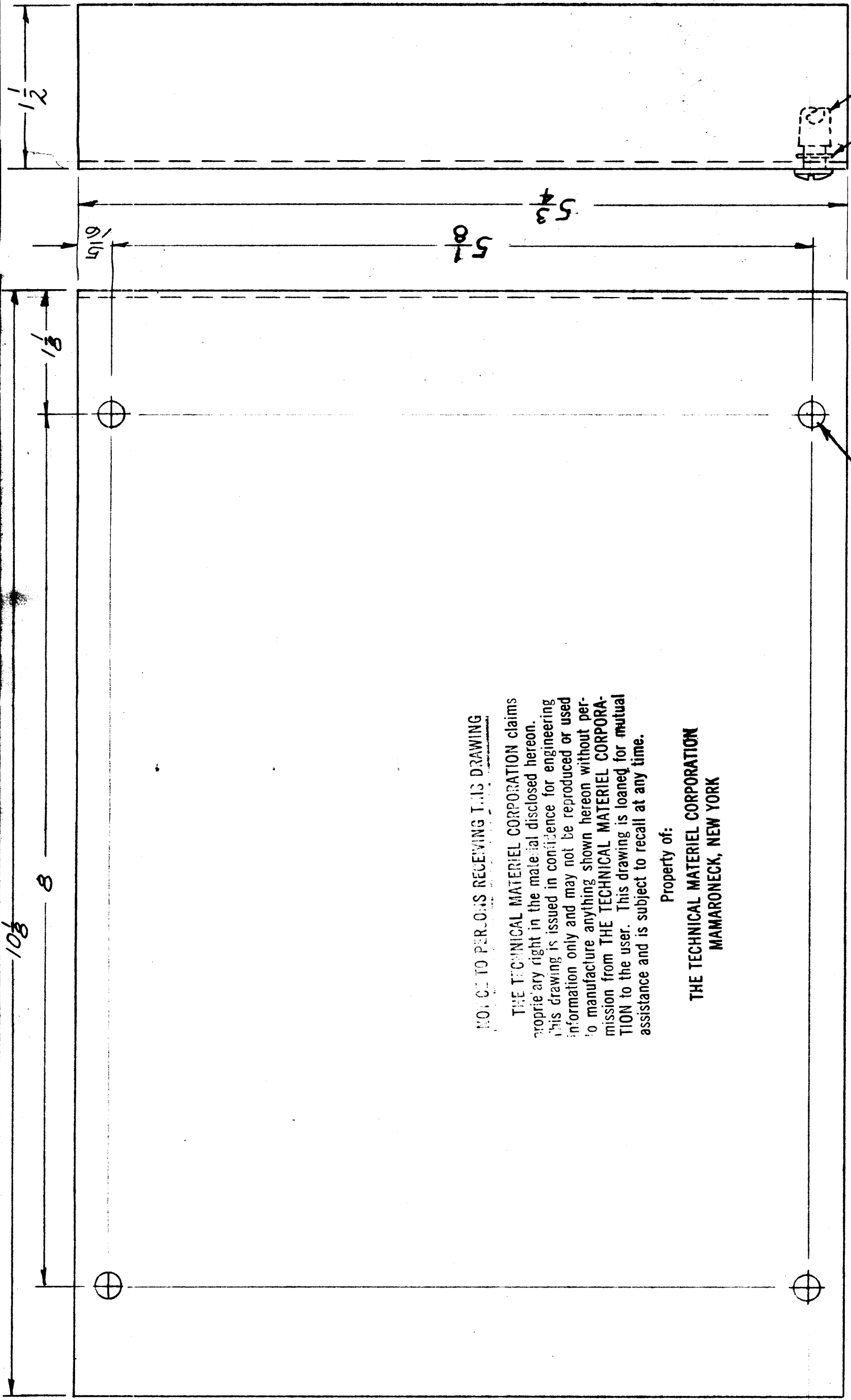
SCALE: *1:1*

MAXIMUM ALLOWABLE TOLERANCES HAVE BEEN DETERMINED AND ANY DEVIATIONS WILL BE CAUSE FOR REJECTION: REMOVE ALL BURRS AND SHARP EDGES

| | | | | |
|---------------|---------|-------------|-----------|--------|
| REQ. PER UNIT | MODEL | PROJECT NO. | ASSY. NO. | DATE |
| 2 | GPT-10K | | | 7-1-59 |

| REQ. ITEM | PART NO. | DESCRIPTION | SYMBOL |
|-----------|-------------------|------------------------------|----------------|
| | .064 | THE TECHNICAL MATERIEL CORP. | |
| | STOCK SIZE | MAMARONECK, NEW YORK | |
| | ALUMINUM | BRACKET, COVER, LINE FILTER | |
| | MATERIAL | | |
| | 5052-H32 | 7/1/59 | <i>HDe</i> |
| | TYPE & TEMPER | CHECKED | FINAL APPROVAL |
| | HEATTREAT. SPEC. | | |
| | S404-1RIDITE | | |
| | FINISH & SPE. NO. | MS-1841 | A |
| | | REG. DES. APP. | DES. APP. |

MS-1842 A



INSIDE RADIUS
METAL THICKNESS

NOTICE TO PERSONS RECEIVING THIS DRAWING

THE TECHNICAL MATERIEL CORPORATION claims appropriate right in the material disclosed herein. This drawing is issued in confidence for engineering information only and may not be reproduced or used to manufacture anything shown herein without permission from THE TECHNICAL MATERIEL CORPORATION to the user. This drawing is loaned for mutual assistance and is subject to recall at any time.

Property of:
THE TECHNICAL MATERIEL CORPORATION
MAMARONECK, NEW YORK

REF: LD-905

| REG. ITEM | PART NO. | DESCRIPTION | SYMBOL |
|-----------|--------------------|--|---------|
| | .064 THICK | THE TECHNICAL MATERIEL CORP. MAMARONECK, NEW YORK | |
| | ALUMINUM | COVER, LINE FILTER BOARD | |
| 5052-H32 | | 7/1/59 | JK |
| | TYPE & TEMPER | DRAWN | CHECKED |
| | HEAT TREAT. SPEC. | | |
| | 5404-1R1DITE | | |
| | FINISH & SPEC. NO. | ELEC. DES. APP. DES. APP. | MS-1842 |

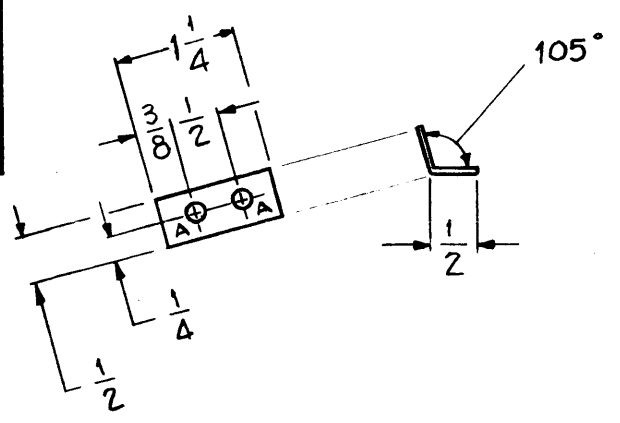
| | | | | | | | | | |
|--|------|-------|---------|-------------|--|-----------|--|------|--------|
| REQ. PER UNIT | 1 | MODEL | 9PT-10K | PROJECT NO. | | ASSY. NO. | | DATE | 7-1-59 |
| TOLERANCES | | | | | | | | | |
| SCALE: DO NOT SCALE | | | | | | | | | |
| MAXIMUM ALLOWABLE TOLERANCES HAVE BEEN DETERMINED AND ANY DEVIATIONS WILL BE CAUSE FOR REJECTION: REMOVE ALL BURRS AND SHARP EDGES | | | | | | | | | |
| DEC. DIM. ± | | | | | | | | | |
| FRAC. DIM. ± | 1/64 | | | | | | | | |
| ANGULAR DIM. ± | | | | | | | | | |

DATE 3-23-61
CH. NO. 1111
DRAFTS CHECKER M.A. JOES
ENG. APP. BR

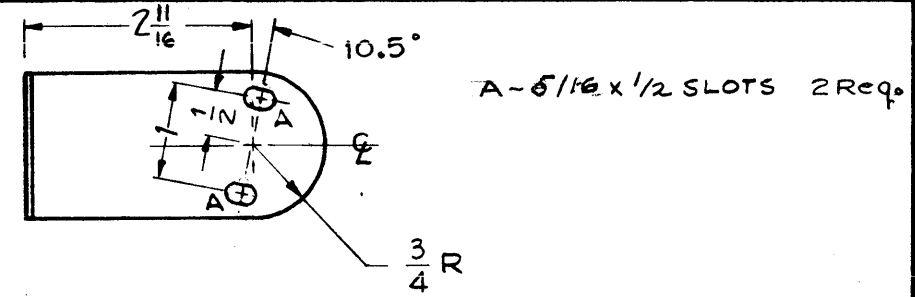
CHANGED FROM
5 3/8 DIM WAS 7
5 1/8 DIM WAS 3 3/8

MS-1848C

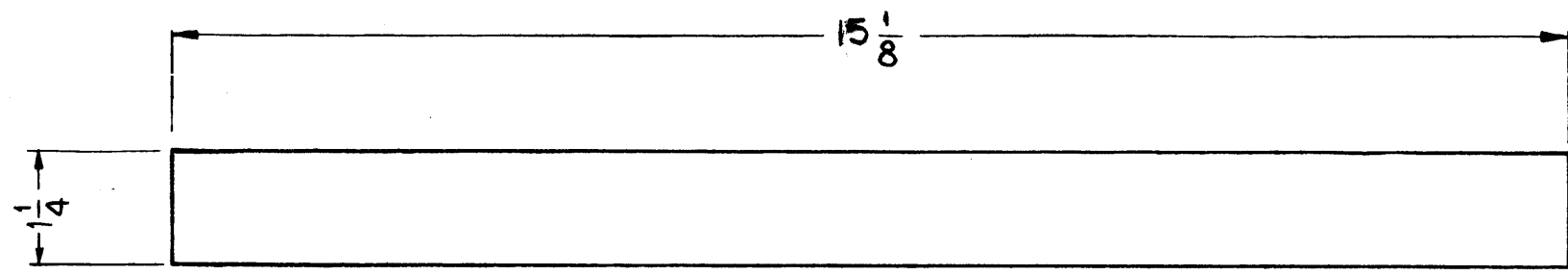
A ~ 3/16 (.187) DIA 2 Req.



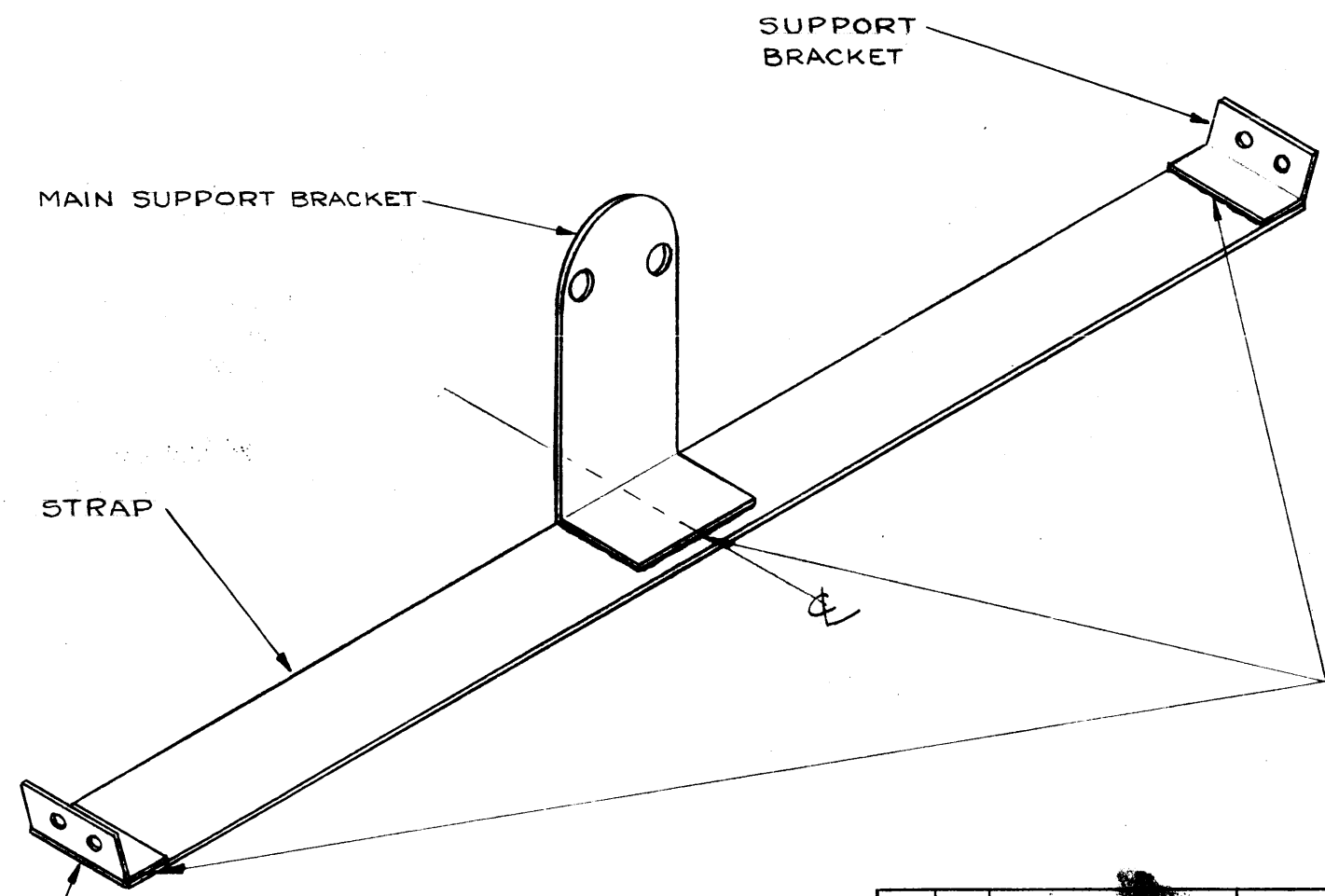
MAT'L - BRASS, .064, FINISH - S-404 IRIDITE
BRACKET, SUPPORT TUBE STRAP
(2 REQ. PER UNIT)



MAT'L - BRASS, .064, FINISH S-404 IRIDITE
BRACKET, MAIN SUPPORT TUBE STRAP
(1 REQ. PER UNIT)



MAT'L SOFT COPPER, .032,
STRAP
(1 REQ. PER UNIT)



NOTICE TO PERSONS RECEIVING THIS DRAWING
THE TECHNICAL MATERIEL CORPORATION claims proprietary right in the material disclosed hereon. This drawing is issued in confidence for engineering information only and may not be reproduced or used to manufacture anything shown hereon without permission from THE TECHNICAL MATERIEL CORPORATION to the user. This drawing is loaned for mutual assistance and is subject to recall at any time.

Property of:
THE TECHNICAL MATERIEL CORPORATION
MAMARONECK, NEW YORK

FINISH NOTE
SILVER PLATE .0003
AND CLEAR IRIDITE

| ISSUE | ITEM | CHANGED FROM | DATE | CH. NO. | DRAFTS | CHECKER | ENG. APP. |
|-------|------|---|---------|---------|--------|---------|-----------|
| C | 1 | 3 7/16 DIM. WAS 3 1/4 | 9/21/60 | 3014 | cy | JHE | JHE |
| B | 1 | 3/4 W 3/8 9/32 TO SLOTS 2 11/16 W 2 3/8 5/16 x 1/2 | 9/23/59 | 1342 | pld. | JHE | JHE |
| A | 1 | DWG. NO. WAS A-1647 | 9/26/59 | 1231 | 16 | JHE | JHE |

| TOLERANCES | | SCALE: |
|----------------|--|--|
| DEC. DIM. ± | | MAXIMUM ALLOWABLE TOLERANCES HAVE BEEN DETERMINED AND ANY DEVIATIONS WILL BE CAUSE FOR REJECTION. REMOVE ALL BURRS AND SHARP EDGES |
| FRAC. DIM. ± | | |
| ANGULAR DIM. ± | | |

| REQ. PER UNIT | MODEL | PROJECT N. | ASS'Y. NO. | DATE |
|---------------|---------|------------|------------|---------|
| 1 | GPT 10K | REF DECK | | 2-20-59 |
| | | | | USED ON |

| REQ. ITEM | PART | DESCRIPTION | SYMBOL |
|-----------|--------------------|--|-----------------|
| | AS SHOWN | THE TECHNICAL MATERIEL CORP. MAMARONECK, NEW YORK | |
| | STOCK SIZE | | |
| | AS SHOWN | 4CX5000A TUBE STRAP GPT 10K | |
| | MATERIAL | | |
| | | J.C. BIELE | JHE |
| | | DRAWN | CHECKED |
| | | | FINAL APPROVAL |
| | SEE NOTE | | |
| | FINISH & SPEC. NO. | ELEC. DES. APP. | MECH. DES. APP. |

MS-1848C

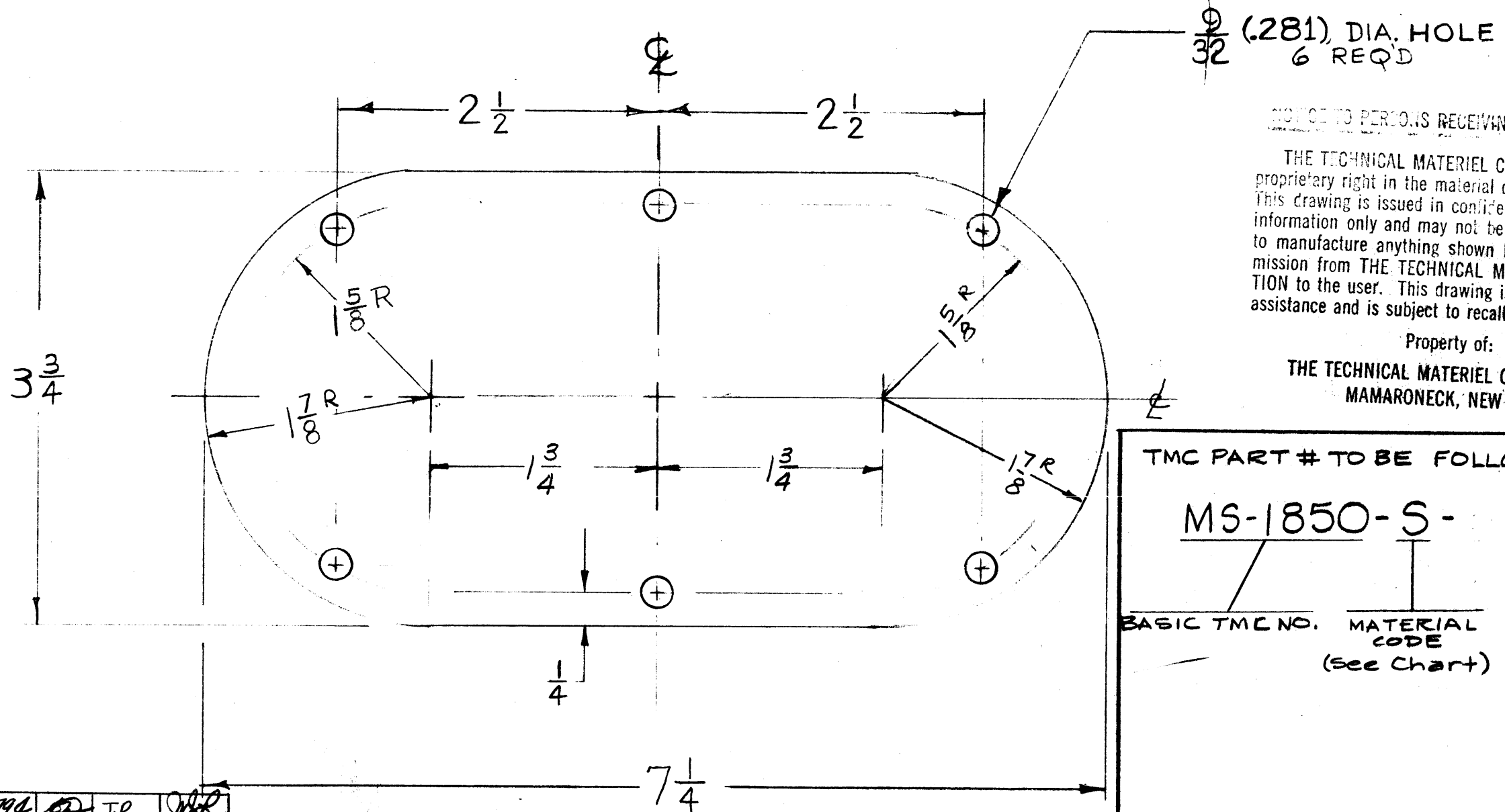
MS-1850

| MATERIAL CODE | MATERIAL | PRIME OR DIP | FINISH |
|---------------|-----------------------------|------------------|--|
| S | STEEL 14 GA. | 5114 ZINC CHROM. | S520 TMC RCAF BLUE GRAY ENAMEL SMOOTH |
| A | ALUMINUM 12 GA.-5052-H32 | | S404 IRIDITE |

NOTE: OR PRIME AND PAINT TO CUSTOMERS SPEC.

FINISH NOTE:

DEGREASE & PREPARE SURFACE
FOR FINISHES AS PER TABLE



NOTICE TO PERSONS RECEIVING THIS DRAWING

THE TECHNICAL MATERIEL CORPORATION claims proprietary right in the material disclosed hereon. This drawing is issued in confidence for engineering information only and may not be reproduced or used to manufacture anything shown hereon without permission from THE TECHNICAL MATERIEL CORPORATION to the user. This drawing is loaned for mutual assistance and is subject to recall at any time.

Property of:

THE TECHNICAL MATERIEL CORPORATION
MAMARONECK, NEW YORK

TMC PART # TO BE FOLLOWING FORM:

MS-1850-S-

BASIC TMC NO. MATERIAL CODE
(See Chart)

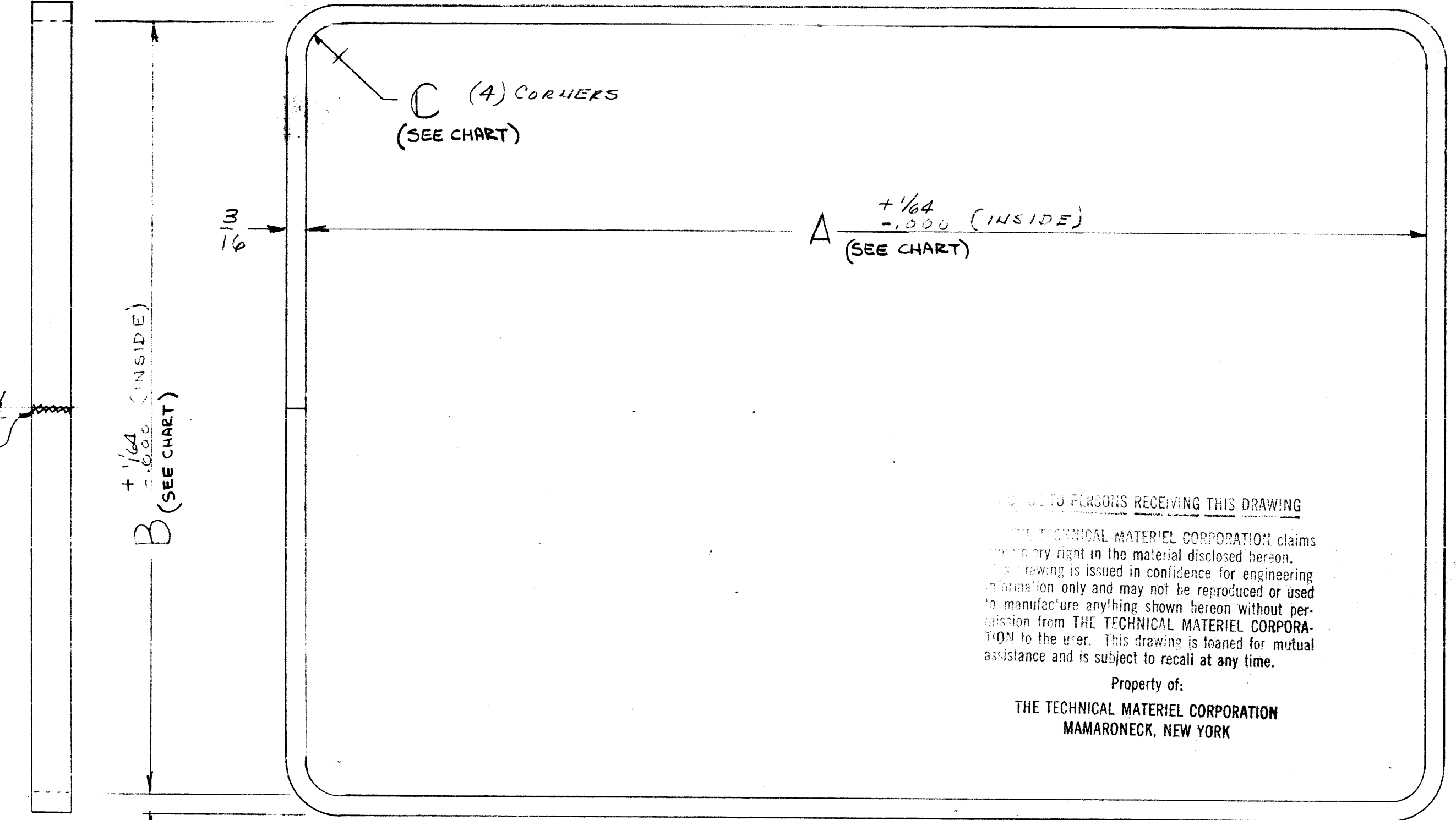
| ISSUE | ITEM | CHANGED FROM | DATE | CH. NO. | DRAFTS | CHECKER | ENG. APP. |
|-------|------|--|----------|---------|--------|---------|--------------------|
| G | 1 | S520 WAS S220 | 1/23/64 | 10794 | | T.R. | <i>[Signature]</i> |
| F | 2 | RECONSTRUCT MAT. CHART | 5-27-60 | 2383 | | CW | <i>[Signature]</i> |
| | 1 | "B" DELETED FROM PART | | | | | <i>[Signature]</i> |
| E | 1 | DELETED "U" UNDER FROM FINISH TABLE | 5-25-60 | | | | <i>[Signature]</i> |
| D | 1 | GPT-40K ADDED | 2-18-60 | | | | <i>[Signature]</i> |
| C | 1 | PARTING. CHGD. TO FAMILY TYPE | 10/29/59 | 1499 | | | <i>[Signature]</i> |
| B | 1 | ADDED MAT'L COL TO TABLE | 3/8/59 | 1256 | | | <i>[Signature]</i> |
| A | 1 | ADDED -1 & -2 & 3 (ADDED FINISH CHART) | 9/1/59 | 1243 | | | <i>[Signature]</i> |

| REQ. PER UNIT | MODEL | SECTION | DATE |
|---------------|---------|---------|---------|
| 2 | GPT-40K | AX-214 | 2-18-60 |
| 1 | GPT-10K | | |
| 1 | GPT-10K | | |
| 1 | GPT-10K | | |
| 4 | RAK-9() | | |

| REQ. ITEM | PART NO. | DESCRIPTION | SYMBOL |
|--------------------|-------------------|--|----------------|
| SEE TABLE | SEE TABLE | THE TECHNICAL MATERIEL CORP. MAMARONECK, NEW YORK | |
| SEE TABLE | SEE TABLE | DOOR, ACCESS | |
| | | | |
| | | | |
| TYPE & TEMPER | HEAT TREAT. SPEC. | DRAWN | CHECKED |
| SEE NOTE & TABLE | | | FINAL APPROVAL |
| FINISH & SPEC. NO. | ELEC. DES. APP. | MECH. DES. APP. | MS-1850 |

MS-1851
D

SEAM WELD
SAND SMOOTH



NOTICE TO PERSONS RECEIVING THIS DRAWING

THE TECHNICAL MATERIEL CORPORATION claims
no copyright in the material disclosed hereon.
This drawing is issued in confidence for engineering
information only and may not be reproduced or used
to manufacture anything shown hereon without per-
mission from THE TECHNICAL MATERIEL CORPORA-
TION to the user. This drawing is loaned for mutual
assistance and is subject to recall at any time.

Property of:
THE TECHNICAL MATERIEL CORPORATION
MAMARONECK, NEW YORK

| TMC PART NO | A | B | C |
|-------------|---------|---------|--------|
| MS1851 | 18 9/16 | 15 9/16 | 7/16 R |
| MS1851-2 | 20 1/8 | 17 5/8 | 1/2 R |

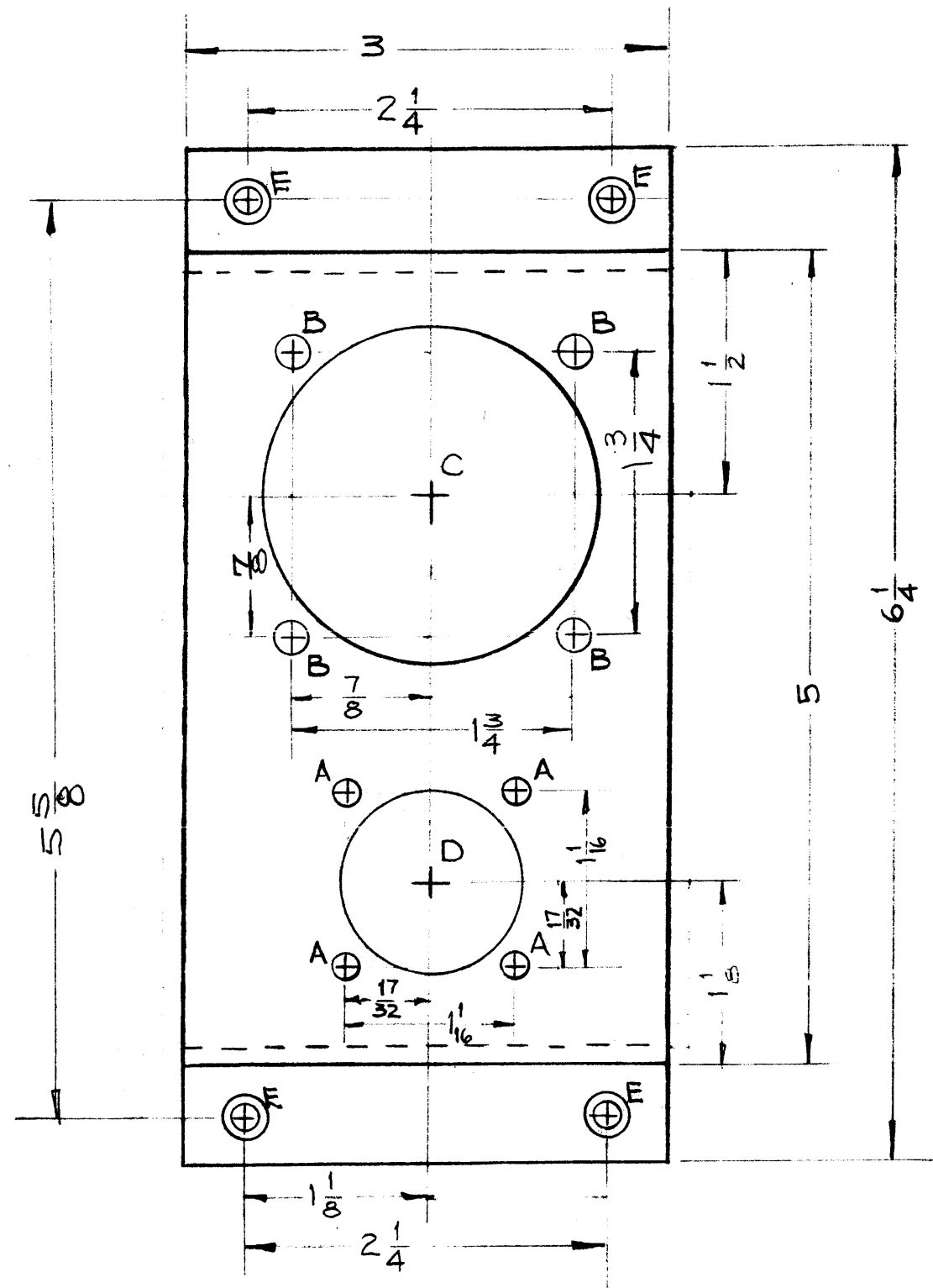
| IS USE ITEM | CHAN ED FROM | DATE | CH. NO. | DRAFTS | CHECKER | ENG. APP. |
|-------------|---|----------|---------|--------|---------|-----------|
| D | S404 YEL. IRI DELE | 1/25/78 | 21624 | WB | RP | |
| C | TMC P/N CHART ADDED | 3-4-66 | 15878 | WB | RP | |
| B | THIS WAS 5/16 R; 18 9/16 DIM. WAS 18 1/2 DIM; 15 1/2 WAS 5/8 | 9/12/61 | 4348 | DM | WB | RP |
| A | S-404 WAS S-101 | 12/15/59 | 1001 | AB | EMN | |

| TOLERANCE | SCALE: |
|----------------|--|
| DEC. DIM. ± | MAXIMUM ALLOWABLE TOLERANCE HAVE BEEN DETERMINED AND ANY DEVIATIONS WILL BE CAUSE F R REJECTION: REMOVE ALL BURR AND SHARP EDGES |
| FRAC. DIM. ± | |
| ANGULAR DIM. ± | |

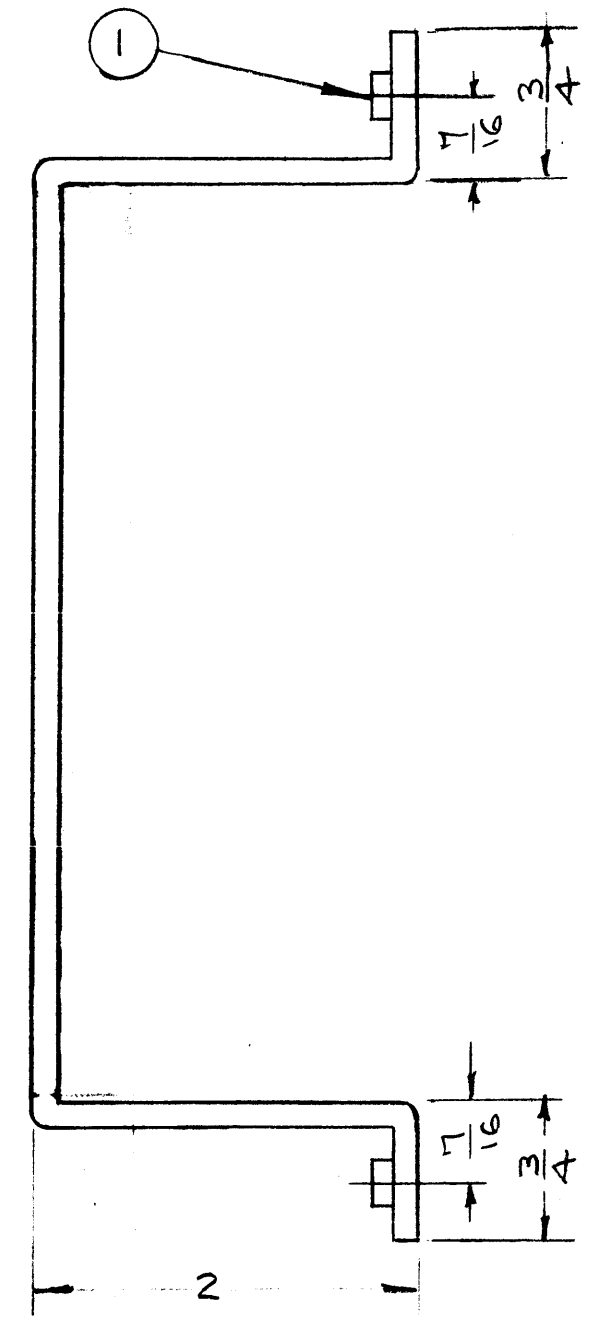
| REQ. PER UNIT | TU-2 | ATS-50/70 | 8-23-59 |
|---------------|-------|-------------|----------------|
| | M DEL | PROJECT NO. | AS Y. N . DATE |
| USED ON | | | |

| REQ. ITEM | PART NO. | DESCRIPTION | SYMBOL |
|-------------------|------------------|--|-----------|
| 3/16 | | THE TECHNICAL MATERIEL CORP. MAMARONECK, NEW YORK | |
| ALUMINUM | | RING, CASE SUPPORT | |
| RS H14 | | | |
| TYPE & TEMPER | HEATTREAT. SPEC. | DRAWN | CHECKED |
| | | EMN | WB |
| FINISH & PEC. NO. | ELEC. DES. APP | MECH. DES. APP | |
| | | | MS-1851 D |

MS-1872



MOUNT AFTER FINISHING



| HOLE | REQU'D. |
|--------------------------|---------|
| A - 11/64 (.171) Dim. | 4 |
| B - 13/64 (.203) " | 4 |
| C - 2-1/16 (2.062) Dim | 1 |
| D - 1-1/8 (1.125) " | 1 |
| E - #2 DRILL (.221) DIA. | 4 |

UNLESS OTHERWISE SPECIFIED:
USE MATERIAL THICKNESS FOR MAX. RADIUS ON ALL BENDS.

NOTICE TO PERSONS RECEIVING THIS DRAWING

THE TECHNICAL MATERIEL CORPORATION claims proprietary right in the material disclosed hereon. This drawing is issued in confidence for engineering information only and may not be reproduced or used to manufacture anything shown hereon without permission from THE TECHNICAL MATERIEL CORPORATION to the user. This drawing is loaned for mutual assistance and is subject to recall at any time.

Property of:
THE TECHNICAL MATERIEL CORPORATION
MAMARONECK, NEW YORK

REF - TMC DWG. NO. LD-631 (2)

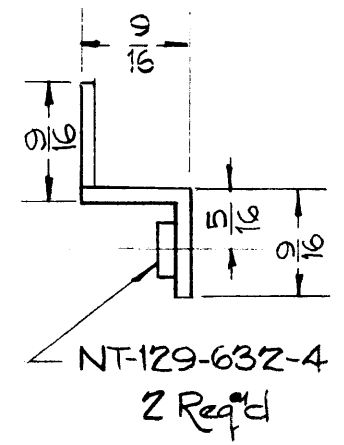
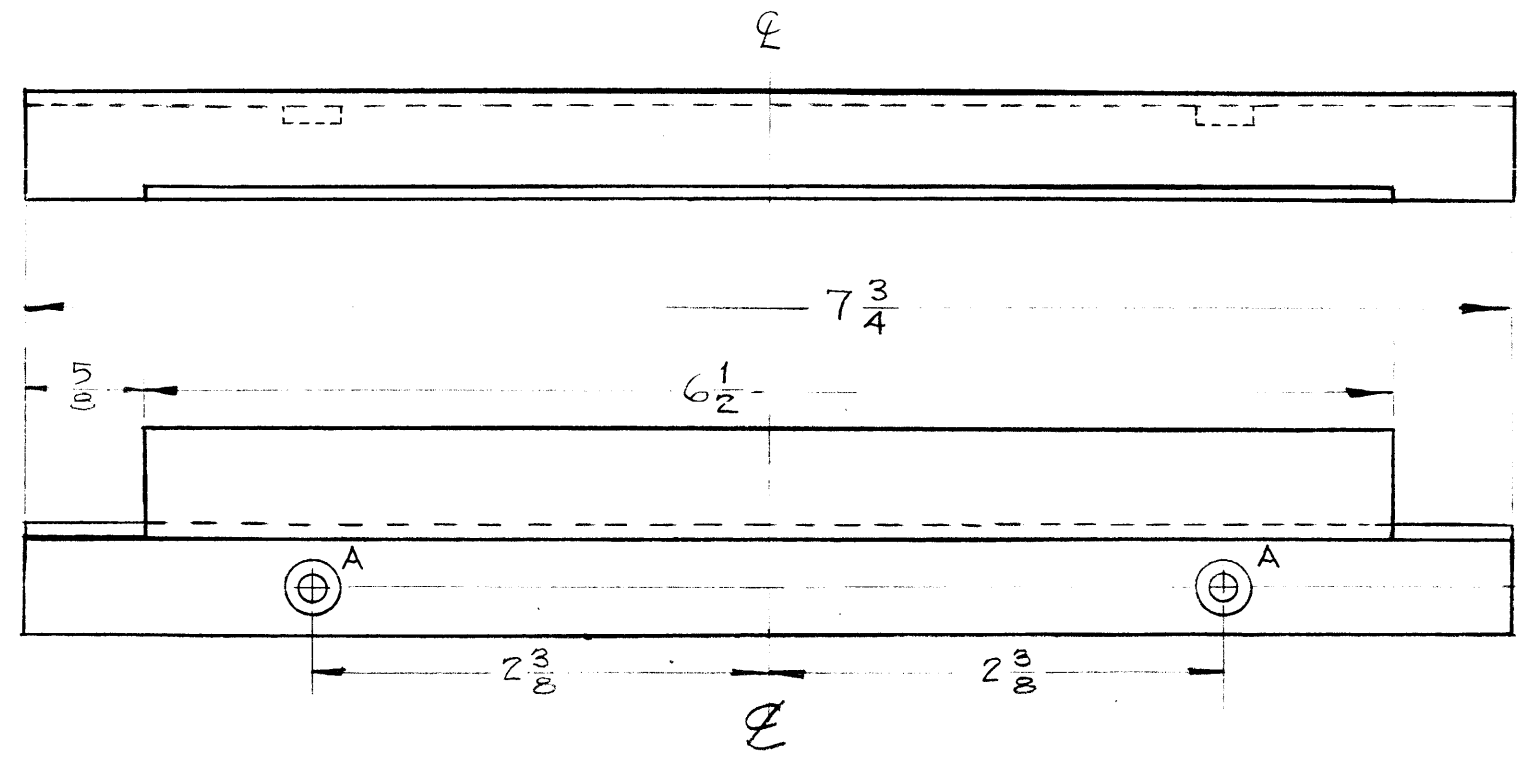
| ISSUE | ITEM | CHANGED FROM | DATE | CH. NO. | DRAFTS | CHECKER | ENG. APP. |
|-------|------|--|----------|---------|--------|---------|-------------|
| C | 2 | DIM 1/4 WAS 1/8. ON C HOLE | 2-14-61 | 4166 | D.J.M. | OKB | [Signature] |
| B | 1 | 1/2 LIP DELETED | | | | | |
| B | 2 | RIGHT LIP 1/16 | | | | | |
| B | 3 | LEFT LIP 1/16 | | | | | |
| A | 3 | NT-129-632-6 ADDED (2) LIP-15/16L. (2) F HOLES ADD. CH. DET. | 12-11-59 | 1656 | J.C.B. | File | [Signature] |

| REQ. PER UNIT | MODEL | PROJECT NO. | ASS'Y. NO. | DATE |
|---------------|--------|-------------|------------|---------|
| | RAK-17 | | | 1-23-61 |
| | RAK-10 | | | 1-23-61 |
| | RAK-9 | | | 1-23-61 |

| REQ. ITEM | PART NO. | DESCRIPTION | SYMBOL |
|-----------|------------------|--------------------|--------|
| 4 | NT-129-832-4 | NUT, SWAGE | |
| | 1/8 | STOCK SIZE | |
| | ALUMINUM | MATERIAL | |
| | 5052-H32 T3 or 4 | TYPE & TEMPER | |
| | | HEAT TREAT. SPEC. | |
| | | FINISH & SPEC. NO. | |

MS-1883

HOLE A ~ CLEARANCE FOR 632 (FOR NT-129-632-4) REQ'D 2



NOTICE TO PERSONS RECEIVING THIS DRAWING
 THE TECHNICAL MATERIEL CORPORATION claims proprietary right in the material disclosed hereon. This drawing is issued in confidence for engineering information only and may not be reproduced or used to manufacture anything shown hereon without permission from THE TECHNICAL MATERIEL CORPORATION to the user. This drawing is loaned for mutual assistance and is subject to recall at any time.

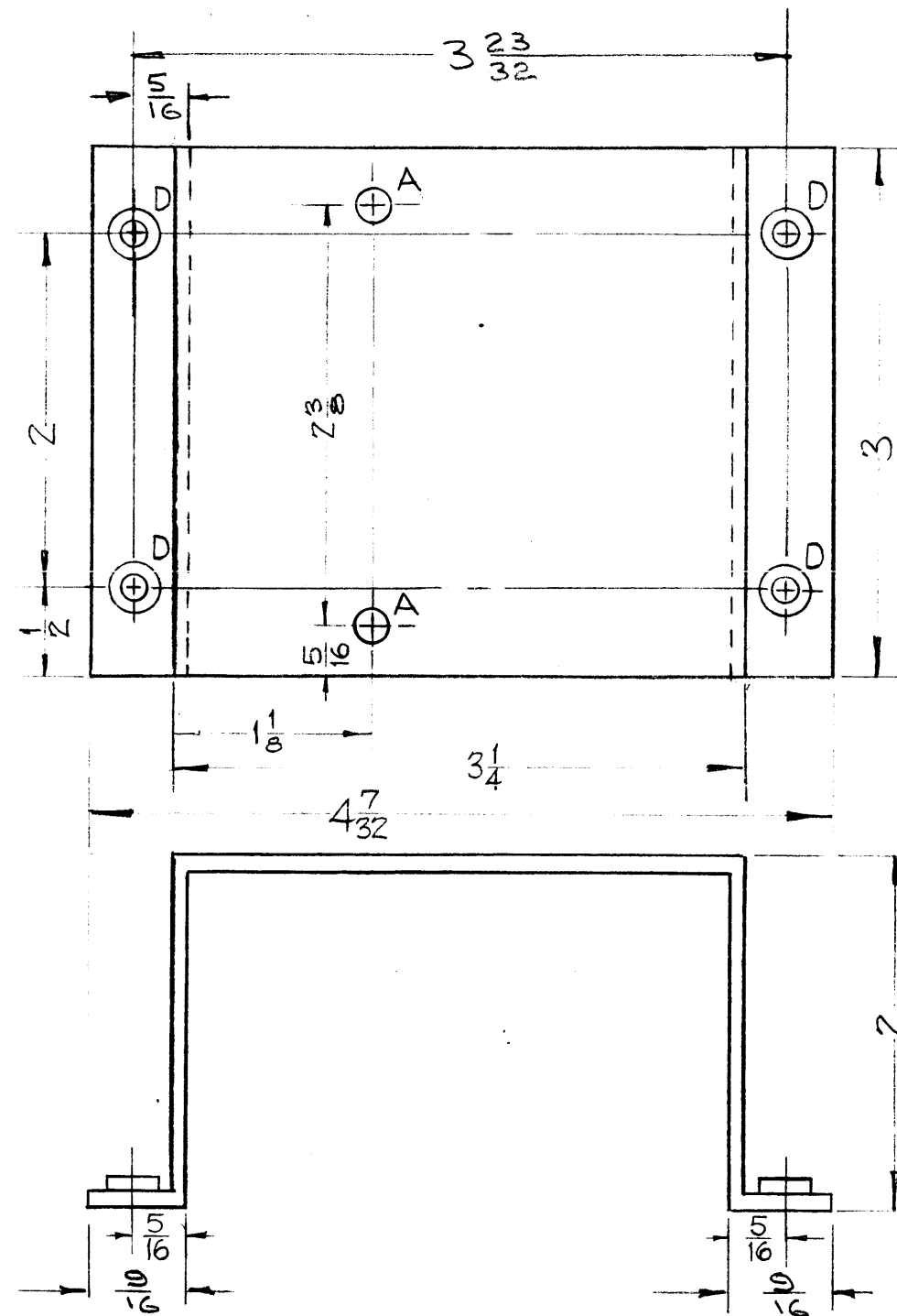
Property of:
 THE TECHNICAL MATERIEL CORPORATION
 MAMARONECK, NEW YORK

| ISSUE | ITEM | CHANGED FROM | DATE | CH. NO. | DRAFTS | CHECKER | ENG. APP. |
|----------------|------|---|------|---------|--------|---------|-----------|
| TOLERANCES | | SCALE: | | | | | |
| DEC. DIM. ± | | MAXIMUM ALLOWABLE TOLERANCES HAVE BEEN DETERMINED AND ANY DEVIATIONS WILL BE CAUSE FOR REJECTION. | | | | | |
| FRAC. DIM. ± | | REMOVE ALL BURRS AND SHARP EDGES | | | | | |
| ANGULAR DIM. ± | | | | | | | |

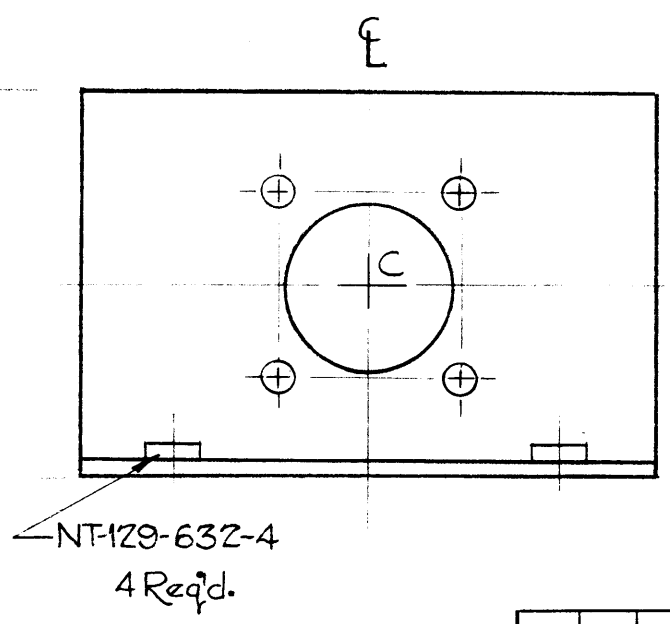
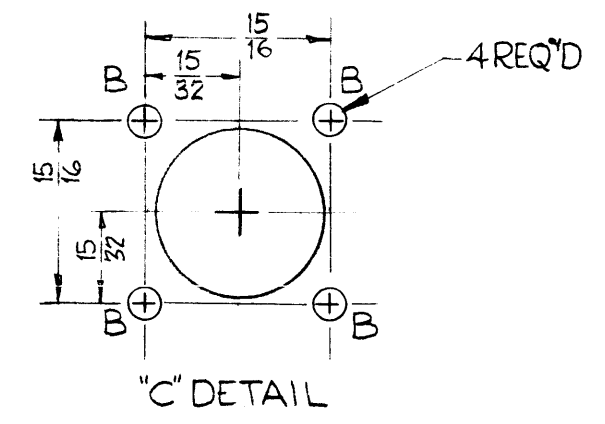
| | | | | |
|---------------|--------|-------------|------------|---------|
| 2 | SBT-1K | | | 9-22-59 |
| REQ. PER UNIT | MODEL | PROJECT NO. | ASS'Y. NO. | DATE |
| USED ON | | | | |

| REQ. ITEM | PART NO. | DESCRIPTION | | | SYMBOL |
|-----------|----------------------|------------------------------|-----------------|----------------|--------|
| | .064 | THE TECHNICAL MATERIEL CORP. | | | |
| | STOCK SIZE | MAMARONECK, NEW YORK | | | |
| | ALUMINUM | TOP FILTER BRACKET, SHORT | | | |
| | MATERIAL | | | | |
| 5052-H32 | | DMANCO | LIO | AMB | |
| | TYPE & TEMPER | DRAWN | CHECKED | FINAL APPROVAL | |
| | S-404 YELLOW IRIDITE | | | MS-1883 | |
| | FINISH & SPEC. NO. | ELEC. DES. APP. | MECH. DES. APP. | | |

MS-1884



| HOLES | | REQ'D |
|-------|---------------------------|-------|
| A | 3/16 (.187) DIA. | 2 |
| B | 5/32 (.156) " | 4 |
| C | 7/8 (.875) " SEE DETAIL | 1 |
| D | MOUNTING FOR NT-129-632-4 | 4 |



NOTE TO PERSONS RECEIVING THIS DRAWING

THE TECHNICAL MATERIEL CORPORATION claims proprietary right in the material disclosed hereon. This drawing is issued in confidence for engineering information only and may not be reproduced or used to manufacture anything shown hereon without permission from THE TECHNICAL MATERIEL CORPORATION to the user. This drawing is loaned for mutual assistance and is subject to recall at any time.

Property of:
 THE TECHNICAL MATERIEL CORPORATION
 MAMARONECK, NEW YORK

| ISSUE | ITEM | CHANGED FROM | DATE | CH. NO. | DRAFTS | CHECKER | ENG. APP. |
|----------------|------|---|------|---------|--------|---------|-----------|
| TOLERANCES | | SCALE: | | | | | |
| DEC. DIM. ± | | MAXIMUM ALLOWABLE TOLERANCES HAVE BEEN DETERMINED AND ANY DEVIATIONS WILL BE CAUSE FOR REJECTION. | | | | | |
| FRAC. DIM. ± | | REMOVE ALL BURRS AND SHARP EDGES | | | | | |
| ANGULAR DIM. ± | | | | | | | |

| | | | | |
|---------------|--------|-------------|------------|---------|
| 1 | SBT-1K | | | 9-23-59 |
| REQ. PER UNIT | MODEL | PROJECT NO. | ASS'Y. NO. | DATE |
| USED ON | | | | |

| REQ. ITEM | PART NO. | DESCRIPTION | SYMBOL |
|--------------------|-------------------|------------------------------|---------|
| .081 | | THE TECHNICAL MATERIEL CORP. | |
| STOCK SIZE | | MAMARONECK, NEW YORK | |
| ALUMINUM | | BRACKET, CAPACITOR | |
| MATERIAL | | BLOWER | |
| 5052-H32 | | | |
| TYPE & TEMPER | HEAT TREAT. SPEC. | DRAWN | CHECKED |
| S-404 | YELLOW IRIDITE | | |
| FINISH & SPEC. NO. | ELEC. DES. APP. | MECH. DES. APP. | MS-1884 |