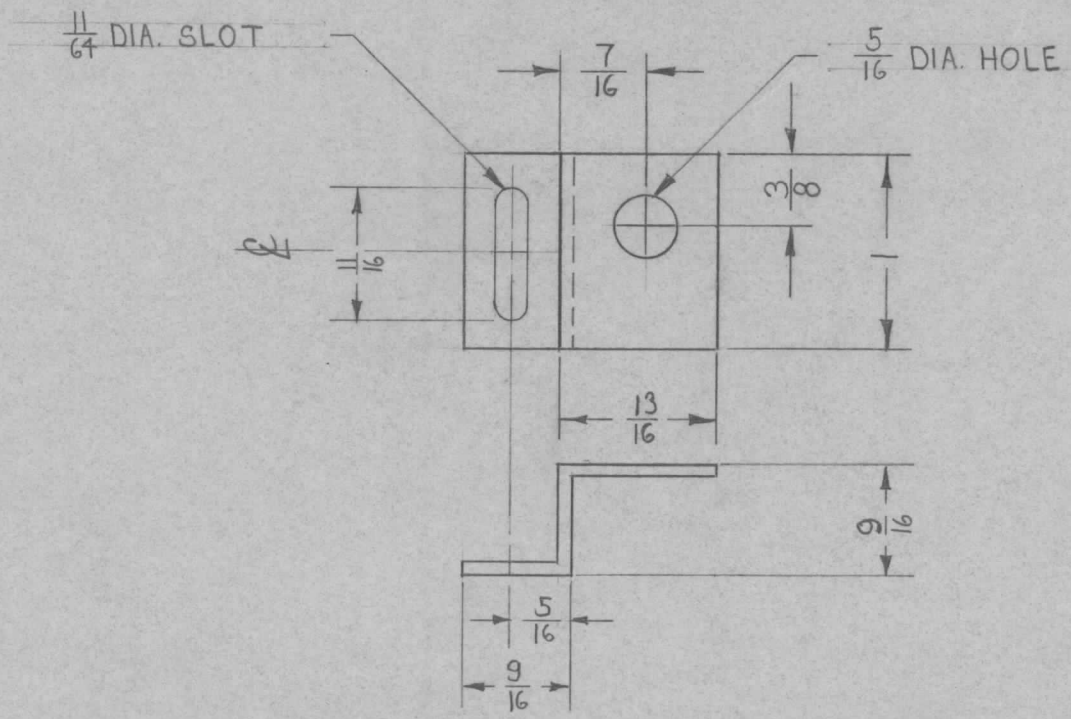


REQ. PER UNIT	USED ON		
	MODEL	ASS'Y. NO.	DATE
1	RAK-9		1-29-60

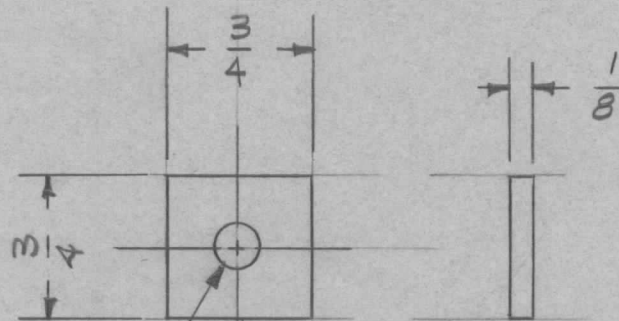
MS-2002



ISSUE	ITEM	CHANGED FROM	DATE	CH. NO.	DRAFTS	CHECKER	ENG. APP.	REQ. ITEM	PART NO.	DESCRIPTION	SYMBOL	
								.064 THK		THE TECHNICAL MATERIEL CORP. MAMARONECK, NEW YORK		
								STOCK SIZE			GUARD, AC SWITCH	
								ALUMINUM				
								MATERIAL				
								5052-H32		wf.	AK	
								TYPE & TEMPER	HEAT TREAT. SPEC.	DRAWN	CHECKED	
								S404 YEL. IRIDITE			APB	
								FINISH & SPEC. NO.		ELEC. DES. APP.	MECH. DES. APP.	
TOLERANCES			SCALE: FULL					MAXIMUM ALLOWABLE TOLERANCES HAVE BEEN DETERMINED AND ANY DEVIATIONS WILL BE CAUSE FOR REJECTION. REMOVE ALL BURRS AND SHARP EDGES				
DEC. DIM. ±												
FRAC. DIM. ± 1/64												
ANGULAR DIM. ±												
										MS-2002		

REQ. PER UNIT	USED ON			MS-2008
	MODEL	ASS'Y. NO.	DATE	
2	AP-103	A-1822	2-3-60	

GPT-40 K

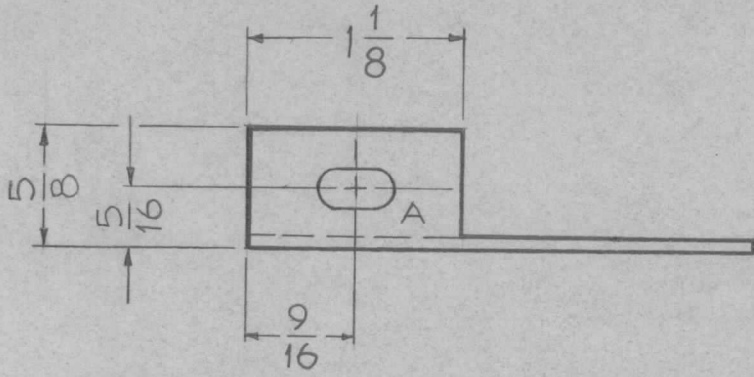


7/32(.218) D. 1 REQ'D.

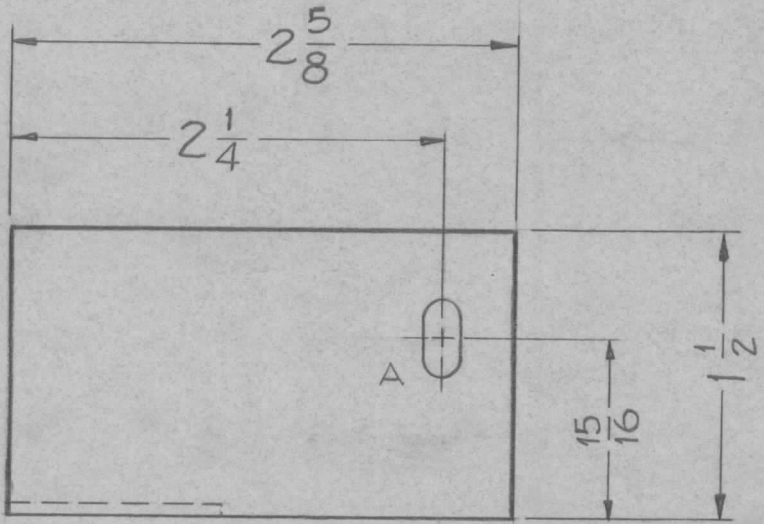
ISSUE	ITEM	CHANGED FROM	DATE	CH. NO.	DRAFTS	CHECKER	ENG. APP.	REQ. ITEM	PART NO.	DESCRIPTION	SYMBOL				
									1/8 THK.	THE TECHNICAL MATERIEL CORP. MAMARONECK, NEW YORK PLATE, SPACER, RESISTOR CLIP					
									STOCK SIZE						
									ALUMINUM						
									MATERIAL						
								5052-H32							
TOLERANCES			SCALE: FULL												
DEC. DIM. ±			MAXIMUM ALLOWABLE TOLERANCES HAVE BEEN DETERMINED AND ANY DEVIATIONS WILL BE CAUSE FOR REJECTION. REMOVE ALL BURRS AND SHARP EDGES					TYPE & TEMPER	HEATTREAT.SPEC.	DRAWN	CHECKED	FINAL APPROVAL			
FRAC. DIM. ±	1/64							5-404	IRIDITE						
ANGULAR DIM. ±															
								FINISH & SPEC. NO.	ELEC. DES. APP	MECH. DES. APP	MS-2008				

REQ. PER UNIT	USED ON		
	MODEL	ASS'Y. NO.	DATE
1	AMC-6		2-8-60

MS-2012

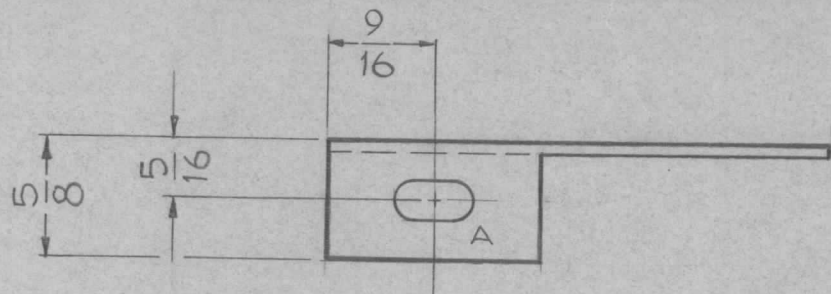


A ~ 13/64 X 13/32 SLOTS 2 REQ.



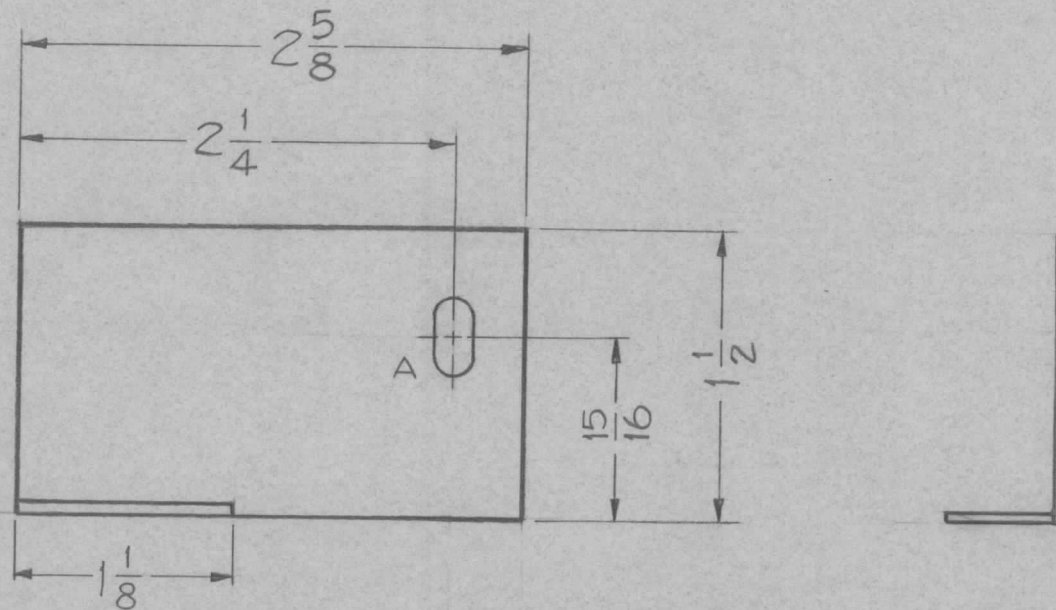
REQ.	ITEM	PART NO.	DESCRIPTION			SYMBOL		
		.064	THE TECHNICAL MATERIEL CORP.					
		STOCK SIZE	MAMARONECK, NEW YORK					
		ALUMINUM	BRACKET, RIGHT SIDE					
		MATERIAL	MOUNTING AMC-6					
ISSUE	ITEM	CHANGED FROM	DATE	CH. NO.	DRAFTS	CHECKER	ENG. APP.	
TOLERANCES			SCALE:				5052-H32	J.C. Biele
DEC. DIM. ±			MAXIMUM ALLOWABLE TOLERANCES HAVE BEEN DETERMINED AND ANY DEVIATIONS WILL BE CAUSE FOR REJECTION.				TYPE & TEMPER	HEAT TREAT. SPEC.
FRAC. DIM. ± 1/64			REMOVE ALL BURRS AND SHARP EDGES				S404 IRIDITE	
ANGULAR DIM. ±							FINISH & SPEC. NO.	ELEC. DES. APP MECH. DES. APP
								MS-2012

REQ. PER UNIT	USED ON			MS-2013
	MODEL	ASS'Y. NO.	DATE	
1	AMC-6		2-8-60	



A ~ 13/64 X 13/32 SLOTS

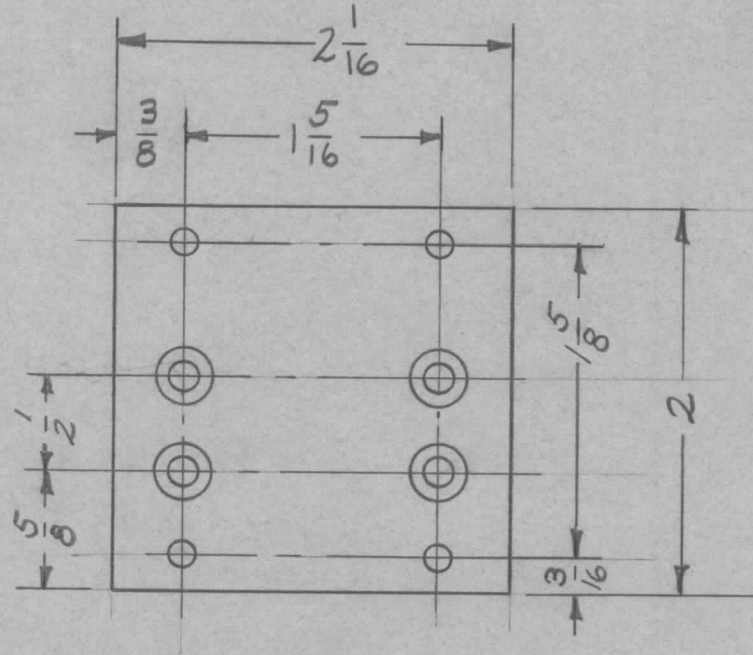
2REQ.



ISSUE	ITEM	CHANGED FROM	DATE	CH. NO.	DRAFTS	CHECKER	ENG. APP.	REQ.	ITEM	PART NO.	DESCRIPTION	SYMBOL					
										064	THE TECHNICAL MATERIEL CORP.						
										ALUMINUM	MAMARONECK, NEW YORK						
										5052-H32	BRACKET, LEFT SIDE,						
										5404 - IRIDITE	MOUNTING AMC-6						
TOLERANCES			SCALE:								J.C. Biele						
DEC. DIM. ±			MAXIMUM ALLOWABLE TOLERANCES HAVE BEEN DETERMINED AND ANY DEVIATIONS WILL BE CAUSE FOR REJECTION. REMOVE ALL BURRS AND SHARP EDGES					TYPE & TEMPER		HEAT TREAT. SPEC.		DRAWN		CHECKED		FINAL APPROVAL	
FRAC. DIM. ± 1/64								FINISH & SPEC. NO.		ELEC. DES. APP		MECH. DES. APP				MS-2013	
ANGULAR DIM. ±																	

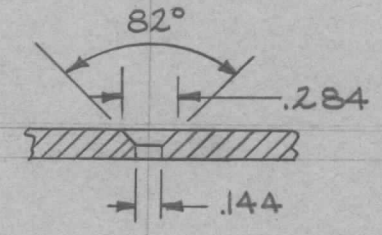
REQ. PER UNIT	USED ON			MS-2020
	MODEL	ASS'Y. NO.	DATE	
4	AR-116		2-4-60	

GPT-40K



A - 1/8 (.125) D. 4 REQ'D.

B - DR: # C'SINK FOR 6-32 FHS 4 REQ'D.



UNLESS OTHERWISE SPECIFIED
DIMENSIONS ARE IN INCHES AND INCLUDE
CHEMICALLY APPLIED OR PLATED FINISHES

DECIMALS	FRACTIONS
.X ± .05	± 1/64
.XX ± .01	ANGLES
.XXX ± .005	± 0° 30'

TOLERANCES

CUT HERE
GUARANTEED
2-66

ISSUE	ITEM	CHANGED FROM	DATE	CH. NO.	DRAFTS	CHECKER	ENG. APP.	REQ.	ITEM	PART NO.	DESCRIPTION	SYMBOL
										1/8	THE TECHNICAL MATERIEL CORP.	
										STOCK SIZE	MAMARONECK, NEW YORK	
										ALUMINUM	PLATE, RELAY MOUNTING	
										MATERIAL	PA SCREEN ON-OFF & TUNE OPEP.	
										5052-H32	<i>TORILLO</i> 2-4-60	<i>VB</i>
										TYPE & TEMPER	CHECKED	FINAL APPROVAL
										HEAT TREAT. SPEC.		
										5404 YEL. IRIDITE	<i>VB</i>	MS-2020
										FINISH & SPEC. NO.	ELEC. DES. APP	MECH. DES. APP

TOLERANCES

DEC. DIM. ±
FRAC. DIM. ±
ANGULAR DIM. ±

SCALE:

MAXIMUM ALLOWABLE TOLERANCES HAVE BEEN DETERMINED AND ANY DEVIATIONS WILL BE CAUSE FOR REJECTION. REMOVE ALL BURRS AND SHARP EDGES

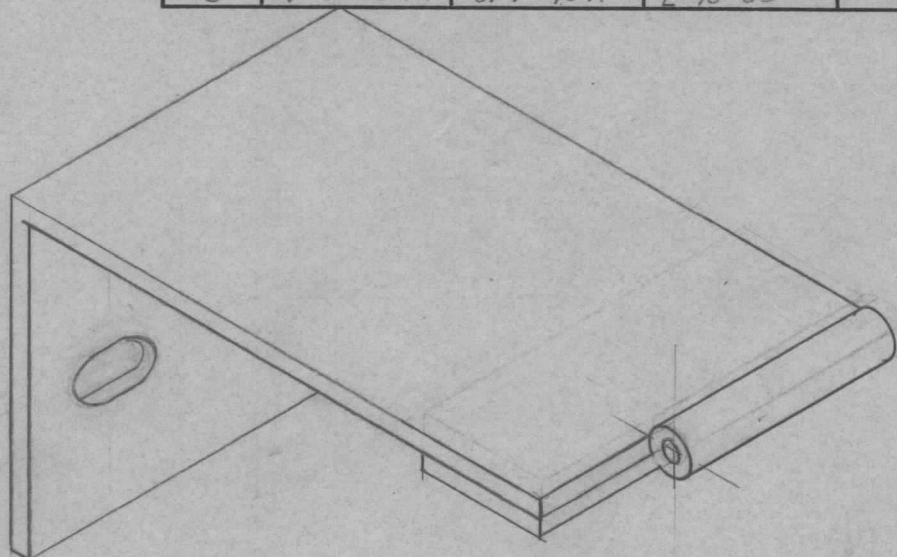
2 1/2" MIN. STEEL HINGE

7/8 LEAF

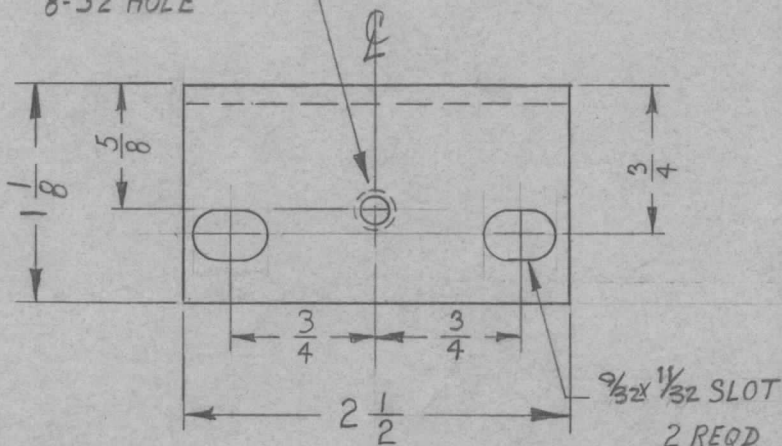
5/32 MIN. PIN, STEEL

SEAM WELD HINGE TO BRACKET AS SHOWN

REQ. PER UNIT	USED ON			MS-2041	A
	MODEL	ASS'Y. NO.	DATE		
3	AX-21A	GPT-40K	2-15-60		



DRILL & TAP FOR
8-32 HOLE



FINISH -
S371- DEGREASING OF PLAIN
STEEL PARTS.
S114 ZINC CHROMATE PRIMER
S220 BLUE GRAY SMOOTH
ENAMEL

REQ.	ITEM	PART NO.	DESCRIPTION				SYMBOL		
		11 GAUGE	THE TECHNICAL MATERIEL CORP.						
		STOCK SIZE	MAMARONECK, NEW YORK						
A	1	RELOCATE HINGE TO BTM.	5-16-60	2280	cy	JCB	MC		
		MILD STEEL	BRACKET, DOOR MTG (REAR)						
		MATERIAL	PA FRAME 10K SIDE						
ISSUE		ITEM	CHANGED FROM	DATE	CH. NO.	DRAFTS	CHECKER	ENG. APP.	
TOLERANCES			SCALE: FULL						
DEC. DIM. ±			MAXIMUM ALLOWABLE TOLERANCES HAVE BEEN DETERMINED AND ANY DEVIATIONS WILL BE CAUSE FOR REJECTION. REMOVE ALL BURRS AND SHARP EDGES						
FRAC. DIM. ± 1/64									
ANGULAR DIM. ±									
TYPE & TEMPER		HEATTREAT. SPEC.		DRAWN		CHECKED		FINAL APPROVAL	
SEE NOTE				WJ		HJC		JCB	
FINISH & SPEC. NO.			ELEC. DES. APP			MECH. DES. APP			
						MS-2041			A

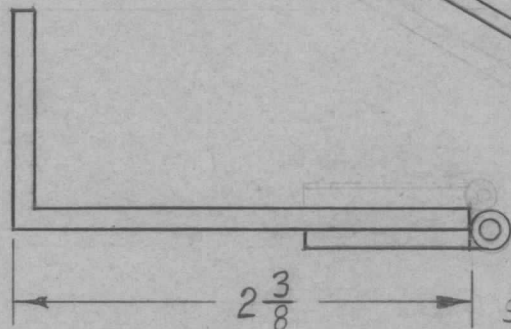
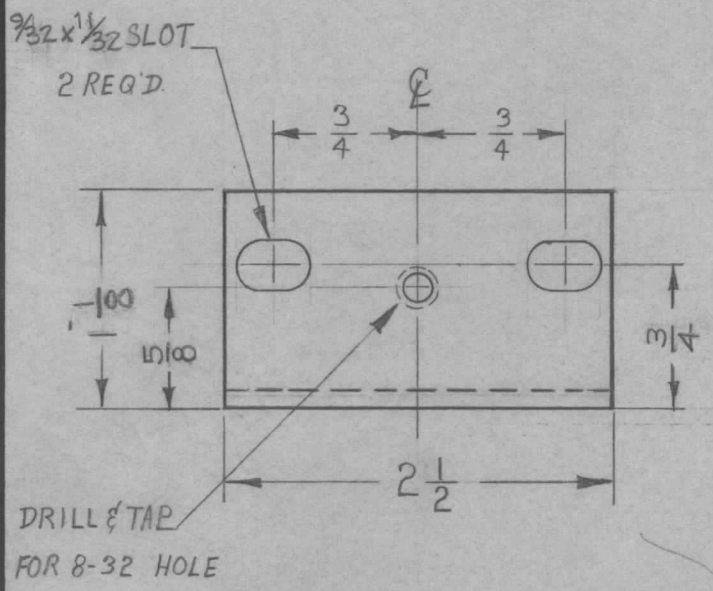
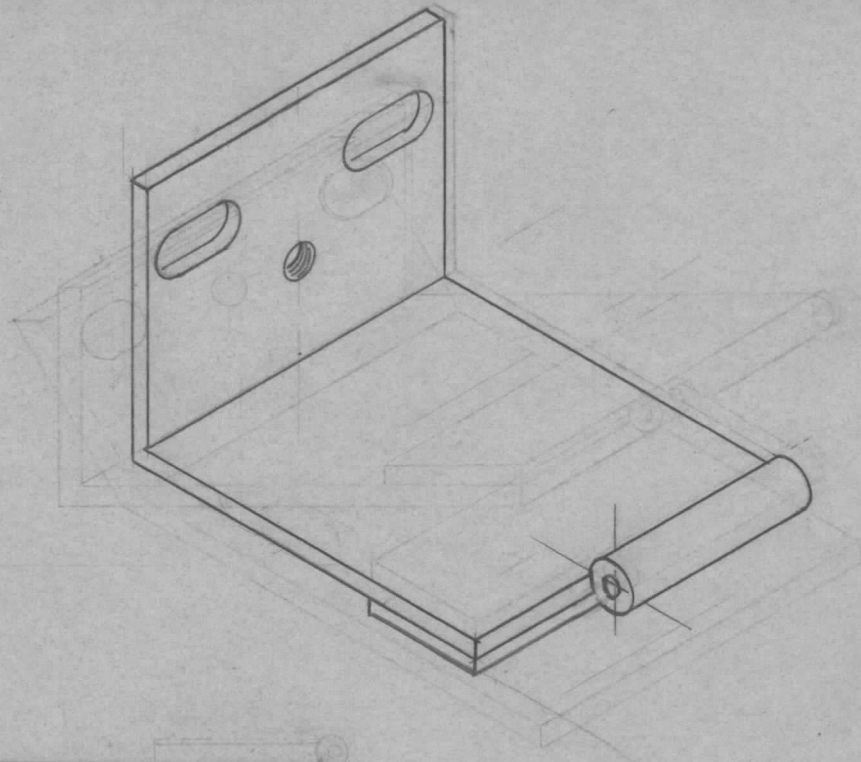
REQ. PER UNIT	USED ON			MS-2042	B
	MODEL	ASS'Y. NO.	DATE		
3	AX-214	GPT-40K	2-15-60		

2 1/2 MIN. STEEL HINGE

7/8 LEAF

5/32 MIN. PIN, STEEL

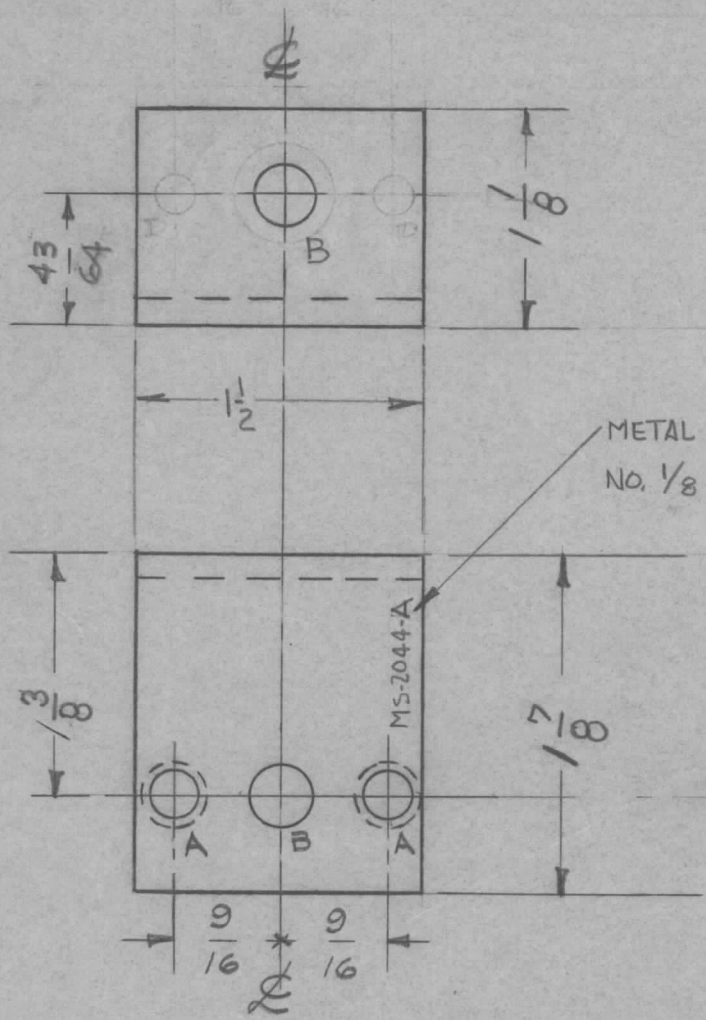
SEAM WELD HINGE TO BRACKET AS SHOWN.



FINISH~
S371 DEGREASING OF PLAIN STEEL PARTS
S114 ZINC CHROMATE PRIMER
S220 BLUE GRAY SMOOTH ENAMEL

REQ.	ITEM	PART NO.	DESCRIPTION			SYMBOL					
B	3	RELOCATE HINGE TO BTM	5	2280	Cy	JCS	WJC	THE TECHNICAL MATERIEL CORP. MAMARONECK, NEW YORK			
	2	3/4 DIM. WAS 7/8	16	60				BRACKET, DOOR MOUNTING (REAR)			
	1	5/8 DIM. WAS 3/4						PA FRAME - PS SIDE			
A	1	3/4 WAS 5/8 7/8 WAS 3/4	3/9/60								
ISSUE	ITEM	CHANGED FROM	DATE	CH. NO.	DRAFTS	CHECKER	ENG. APP.				
TOLERANCES			SCALE: FULL								
DEC. DIM. ±			MAXIMUM ALLOWABLE TOLERANCES HAVE BEEN DETERMINED AND ANY DEVIATIONS WILL BE CAUSE FOR REJECTION. REMOVE ALL BURRS AND SHARP EDGES								
FRAC. DIM. ± 1/64											
ANGULAR DIM. ±											
		11 GAUGE									
		STOCK SIZE									
		MILD STEEL									
		MATERIAL									
		2220									
		TYPE & TEMPER	HEAT TREAT. SPEC.		DRAWN		CHECKED		FINAL APPROVAL		
		SEE NOTE							MS-2042		
		FINISH & SPEC. NO.	ELEC. DES. APP.		MECH. DES. APP.				B		

REQ. PER UNIT	USED ON			MS-2044	B
	MODEL	ASS'Y. NO.	DATE		
3	AX-209	GPT-40K	2-16-60		



A - .221-.224 DIA. 2 REQ. (NT-129-832-6)
 B - 5/16 DIA. 2 REQ.
 C - 1/2 DIA. 1 REQ.
 D - 3/16 DIA. 2 REQ.

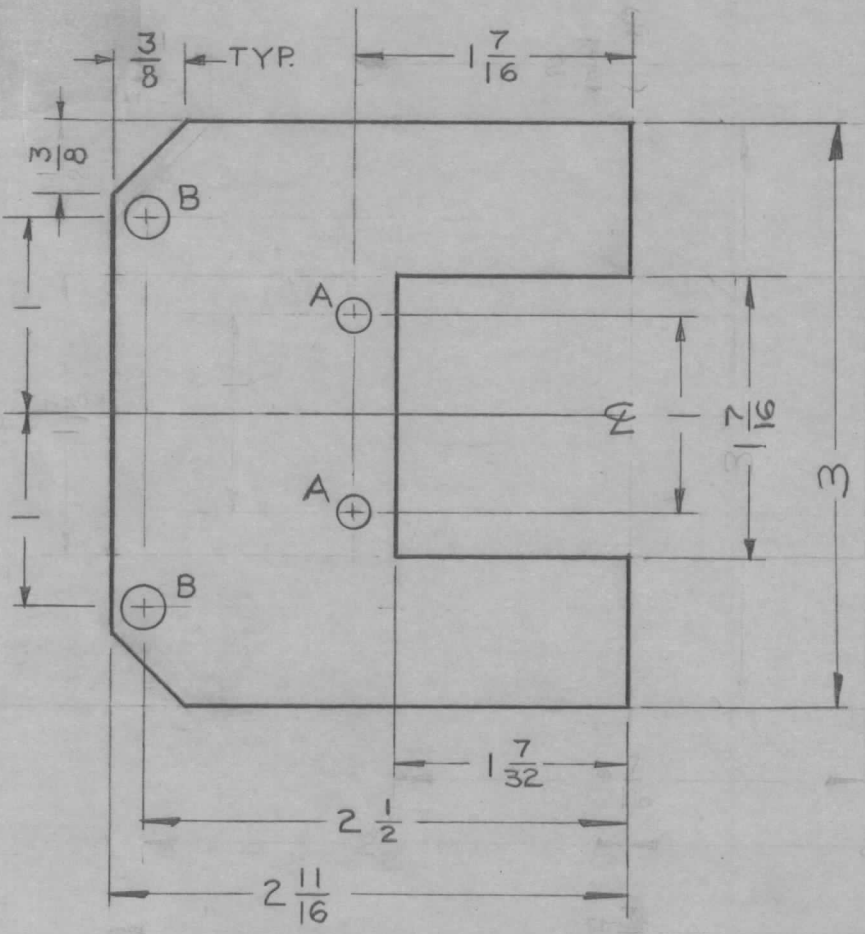
1/8 RADIUS BEND

1 MOUNT ITEM 1 IN "A" HOLES AS SHOWN

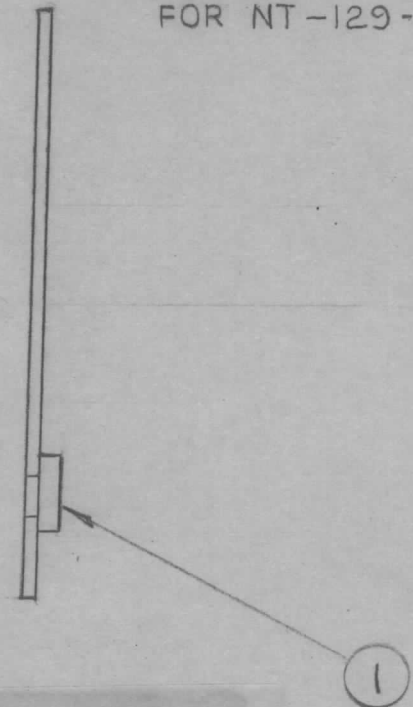
ISSUE	ITEM	CHANGED FROM	DATE	CH. NO.	DRAFTS	CHECKER	ENG. APP.
	B	NT-129-832-6	11/7/63	10282			
	A	ITEM 1 WAS NT-129-832-6	4/26/61	4745			
TOLERANCES			SCALE:				
DEC. DIM. ±			MAXIMUM ALLOWABLE TOLERANCES HAVE BEEN DETERMINED AND ANY DEVIATIONS WILL BE CAUSE FOR REJECTION. REMOVE ALL BURRS AND SHARP EDGES				
FRAC. DIM. ±							
ANGULAR DIM. ±							

2	1	NT-129-832-6	NUT, ROUND SWAGE TYPE	A
REQ.	ITEM	PART NO.	DESCRIPTION	SYMBOL
1/8 TH'K			THE TECHNICAL MATERIEL CORP.	
STOCK SIZE			MAMARONECK, NEW YORK	
ALUMINUM			BRACKET, SHAFT ALIGNMENT	
MATERIAL			CAPACITOR	
5052-H32			TORILLO	J De
TYPE & TEMPER		HEATTREAT. SPEC.	DRAWN	CHECKED
S404-YEL. IRIDITE				
FINISH & SPEC. NO.		ELEC. DES. APP.	MECH. DES. APP.	
			RLN	MS-2044
				B

REQ. PER. UNIT	USED ON			MS-2064	B
	MODEL	ASS'Y. NO.	DATE		
2	GPT. 40K	AP-103	2/23/60		



A ~ .152 DIA. 2 REQ.
 B ~ .221-.224 DIA. 2 REQ.
 FOR NT-129-832-4



UNLESS OTHERWISE SPECIFIED
 DIMENSIONS ARE IN INCHES AND INCLUDE
 CHEMICALLY APPLIED OR PLATED FINISHES

DECIMALS	FRACTIONS
.X ± .05	± 1/64
.XX ± .01	ANGLES
.XXX ± .005	± 0° 30'

TOLERANCES

CUT HERE
 GUARANTEED
 2-54

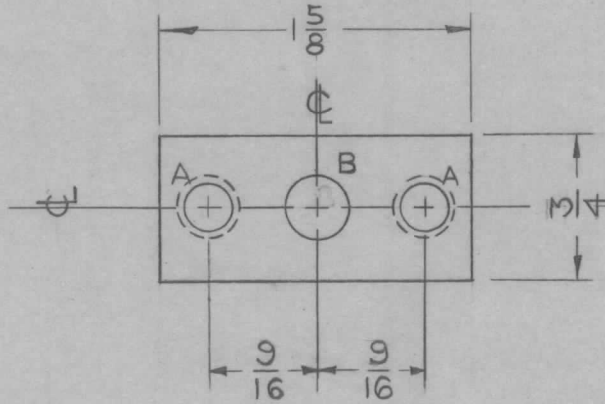
MOUNT IN "B"
 HOLES AS SHOWN

2		1		NT-129-832-4			SWAGE NUT, ROUND TYPE		
REQ.	ITEM	PART NO.			DESCRIPTION			SYMBOL	
		1/8			THE TECHNICAL MATERIEL CORP.				
		STOCK SIZE			MAMARONECK, NEW YORK				
		.081 ALUMINUM			PLATE, ANT. TUNER CONNECTOR				
		MATERIAL							
		5052-H32			CJ			JHE	
		TYPE & TEMPER			HEAT TREAT. SPEC.			DRAWN	
		S404						CHECKED	
		FINISH & SPEC. NO.			ELEC. DES. APP			MECH. DES. APP	
								FINAL APPROVAL	
								MS-2064 B	

B	1	COMPLETE REDESIGN	6-14-60	2433	WJ	JCB	
A	1	1/8 STOCK SIZE WAS .081	4-1-60	1971	PD	JHE	
ISSUE	ITEM	CHANGED FROM	DATE	CH. NO.	DRAFTS	CHECKER	ENG. APP.
TOLERANCES		SCALE: FULL					
DEC. DIM. ±		MAXIMUM ALLOWABLE TOLERANCES HAVE BEEN DETERMINED AND ANY DEVIATIONS WILL BE CAUSE FOR REJECTION.					
FRAC. DIM. ±		REMOVE ALL BURRS AND SHARP EDGES					
ANGULAR DIM. ±							

REQ. PER UNIT	USED ON			MS-2078	A
	MODEL	ASS'Y. NO.	DATE		
2	GPT-40K	AT-101	3/3/60		

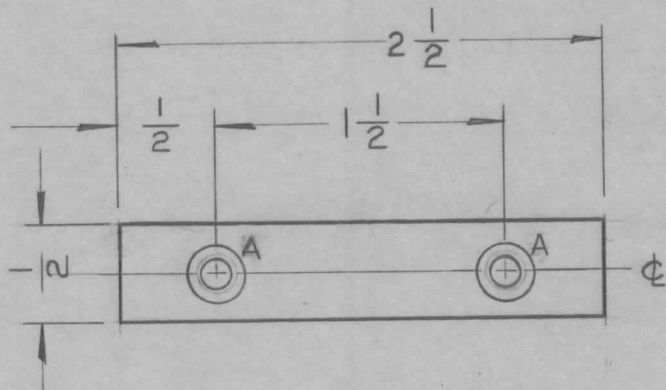
A ~ .221-.224 D. HOLES 2 REQ
 B ~ FOR NT-129-832-4 ~ 2 REQ
 B ~ 5/16 D. HOLE ~ 1 REQ.



① MOUNT AS SHOWN
 IN ALL "A" HOLES

							2	1	NT-129-832-4	NUT, ROUND, SWAGE TYPE		
							REQ.	ITEM	PART NO.	DESCRIPTION	SYMBOL	
							.081			THE TECHNICAL MATERIEL CORP.		
							STOCK SIZE			MAMARONECK, NEW YORK		
							ALUMINUM			PLATE, BUSHING, COUNTER		
							MATERIAL			ANTENNA TUNER		
							5052-H32			CU	FILE	DR
							TYPE & TEMPER			DRAWN	CHECKED	FINAL APPROVAL
							HEAT TREAT. SPEC.			MS-2078 A		
							S404 YELLOW IRIDITE					
							FINISH & SPEC. NO.			ELEC. DES. APP MECH. DES. APP		
A 1 ADDED ITEM(1) & NOTE				4-18-63	8827	RE	JMS	MJB				
ISSUE	ITEM	CHANGED FROM	DATE	CH. NO.	DRAFTS	CHECKER	ENG. APP.					
TOLERANCES			SCALE: FULL									
DEC. DIM. ±			MAXIMUM ALLOWABLE TOLERANCES HAVE BEEN DETERMINED AND ANY DEVIATIONS WILL BE CAUSE FOR REJECTION.									
FRAC. DIM. ± 1/64			REMOVE ALL BURRS AND SHARP EDGES									
ANGULAR DIM. ±												

REQ. PER. UNIT	USED ON			MS-2086	A
	MODEL	ASS'Y. NO.	DATE		
1	GPT 40K	AX-212	3/3/60		

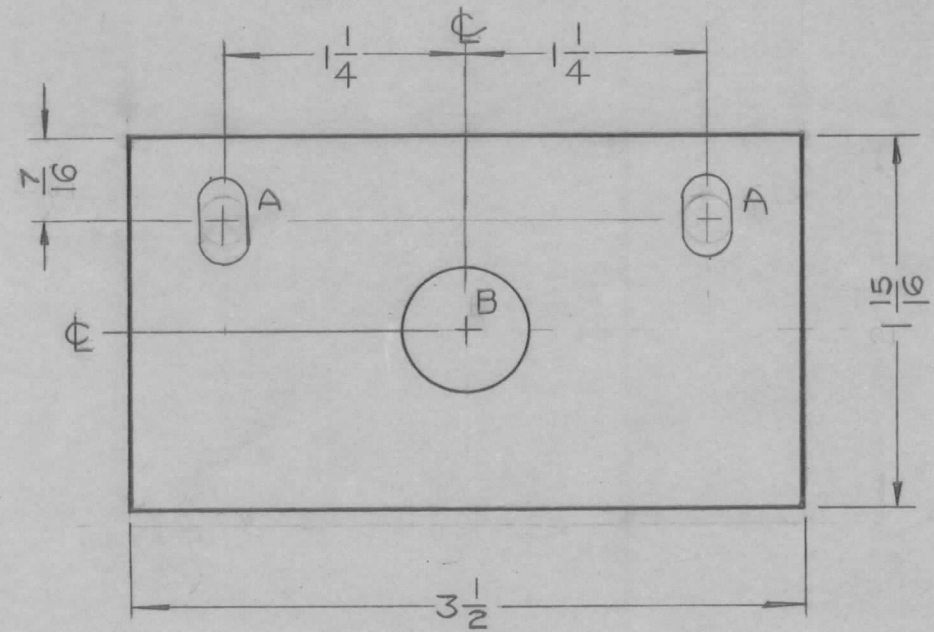


A ~ DRILL & C'SK 2 REQ
FOR 8-32 F.H.S.

							REQ. ITEM	PART NO.	DESCRIPTION	SYMBOL	
							.064		THE TECHNICAL MATERIEL CORP.		
							STOCK SIZE		MAMARONECK, NEW YORK		
A	1	"A" HOLES WERE 3/16 DRILL	11-12-63	10374			ALUMINUM	PLATE, CABLE RETAINING			
ISSUE ITEM CHANGED FROM							DATE	CH. NO.	DRAFTS	CHECKER	ENG. APP.
TOLERANCES							SCALE:				
DEC. DIM. ±							MAXIMUM ALLOWABLE TOLERANCES HAVE BEEN DETERMINED AND ANY DEVIATIONS WILL BE CAUSE FOR REJECTION. REMOVE ALL BURRS AND SHARP EDGES				
FRAC. DIM. ± 1/64											
ANGULAR DIM. ±											
							5052-H32				
							TYPE & TEMPER	HEATTREAT. SPEC.	DRAWN	CHECKED	FINAL APPROVAL
							S404 IRIDITE				MS-2086
							FINISH & SPEC. NO.		ELEC. DES. APP	MECH. DES. APP	A

REQ. PER UNIT	USED ON			MS-2091	B
	MODEL	ASS'Y. NO.	DATE		
1	GPT-40K	AX-209	3/4/60		

A ~ 1/4 x 7/16 SLOTS - 2 REQ.
 B ~ 5/8 D. HOLE - 1 REQ.

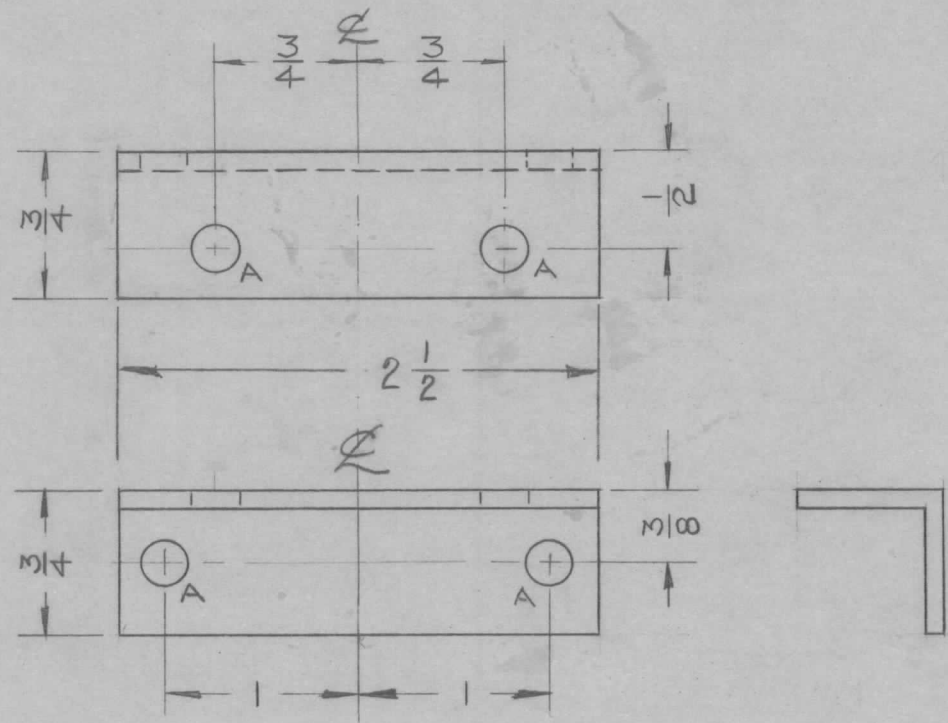


							REQ. ITEM	PART NO.	DESCRIPTION	SYMBOL	
							1/8		THE TECHNICAL MATERIEL CORP.		
							STOCK SIZE		MAMARONECK, NEW YORK		
B	1	SEE EMN #10887	2/18/64	10887	AM.	TR		RETAINER, SPROCKET			
A	2	1-15/16 DIM. WAS 2"	6-24-60	2532	CY	File					
	1	7/16 DIM. WAS 1/2"									
ISSUE	ITEM	CHANGED FROM	DATE	CH. NO.	DRAFTS	CHECKER	ENG. APP.				
TOLERANCES			SCALE:				5052-H32				
DEC. DIM. ±			MAXIMUM ALLOWABLE TOLERANCES HAVE BEEN DETERMINED AND ANY DEVIATIONS WILL BE CAUSE FOR REJECTION.				TYPE & TEMPER	HEAT TREAT. SPEC.	DRAWN	CHECKED	FINAL APPROVAL
FRAC. DIM. ± 1/64			REMOVE ALL BURRS AND SHARP EDGES				S 404 IRIDITE				MS-2091
ANGULAR DIM. ±							FINISH & SPEC. NO.	ELEC. DES. APP	MECH. DES. APP		B

REQ. PER. UNIT	USED ON			MS-2092	A
	MODEL	ASSY. NO.	DATE		
	2	GPT-40K	AX 209		

A - 7/32 DIA

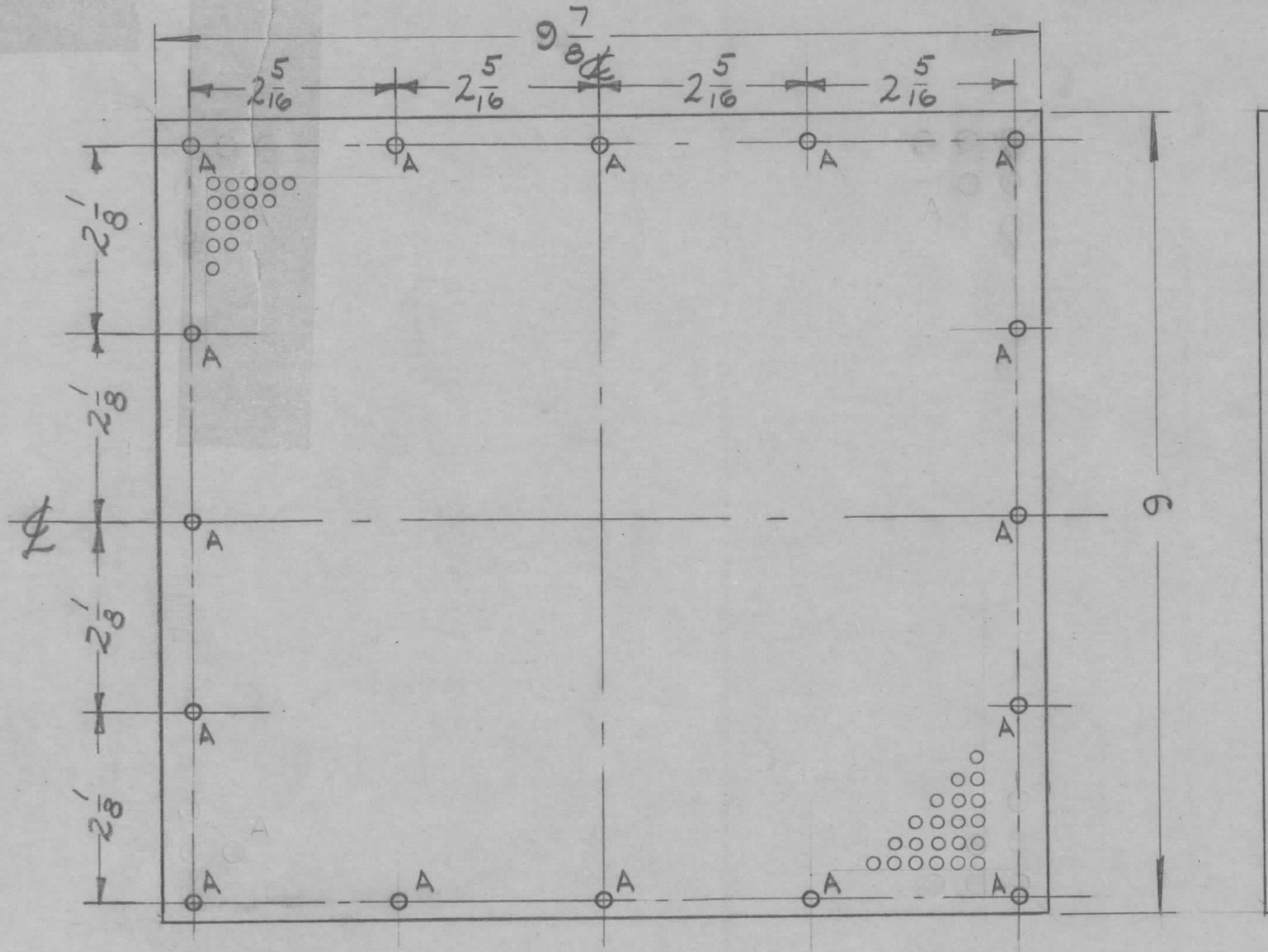
4 REQ



							REQ.	ITEM	PART NO.	DESCRIPTION			SYMBOL	
									064	THE TECHNICAL MATERIEL CORP.				
									STOCK SIZE	MAMARONECK, NEW YORK				
									ALUMINUM	BRACKET CAPACITOR				
									MATERIAL					
A	1	ADDED 2 1/2 DIM	3-22-60	~	mf	16		5052-H32		CY	JL	DB		
ISSUE	ITEM	CHANGED FROM	DATE	CH. NO.	DRAFTS	CHECKER	ENG. APP.			DRAWN	CHECKED	FINAL APPROVAL		
TOLERANCES			SCALE:				TYPE & TEMPER		HEATTREAT. SPEC.					
DEC. DIM. ±			MAXIMUM ALLOWABLE TOLERANCES HAVE BEEN DETERMINED AND ANY DEVIATIONS WILL BE CAUSE FOR REJECTION.				S 404 IRIDITE							
FRAC. DIM. ± 1/64			REMOVE ALL BURRS AND SHARP EDGES				FINISH & SPEC. NO.		ELEC. DES. APP		MECH. DES. APP		MS-2092 A	
ANGULAR DIM. ±														

REQ. PER. UNIT	USED ON		
	MODEL	ASS'Y. NO.	DATE
1	GPT-40K	AT-101	3/4/60

MS-2093 D



PERFORATIONS —
 .156 DIA ON 3/16 STAGGERED
 CENTERS

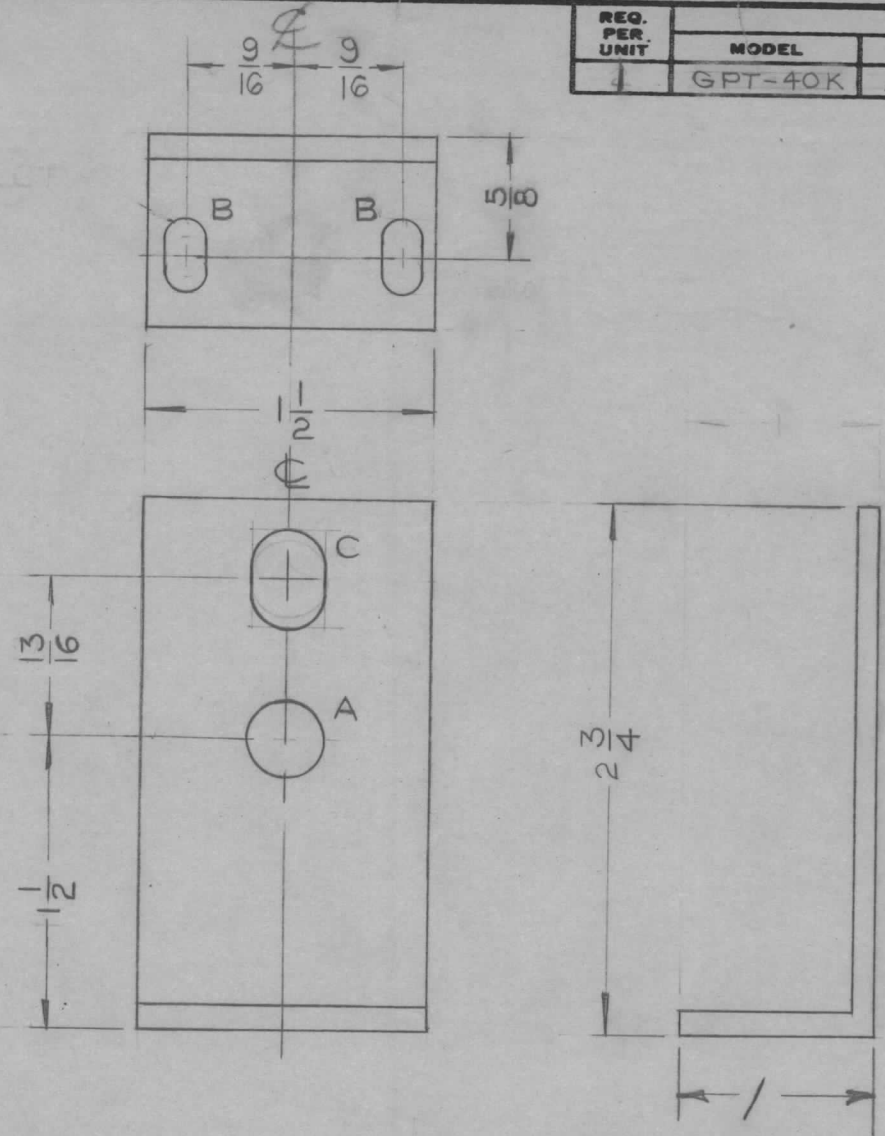
A - 1/8 (.125) D. 16 REQ.

UNLESS OTHERWISE SPECIFIED DIMENSIONS ARE IN INCHES AND INCLUDE CHEMICALLY APPLIED OR PLATED FINISHES		
DECIMALS	TOLERANCES	FRACTIONS
.X ± .05		± 1/64
.XX ± .01		ANGLES
.XXX ± .005		± 0° 30'

CUT HERE
 2-66

D	1	DWG UPDATED	10/22/63	10255	<i>[Signature]</i>	<i>[Signature]</i>	<i>[Signature]</i>	REQ. ITEM	PART NO.	DESCRIPTION			SYMBOL			
C	1	MAT'L WAS ALUMINUM	3-7-63	8445	<i>[Signature]</i>	<i>[Signature]</i>	<i>[Signature]</i>		.064	THE TECHNICAL MATERIEL CORP.						
B	1	ON Perforation Note A 24 Req. Perforation deleted	6-3-61	5001	<i>[Signature]</i>	<i>[Signature]</i>	<i>[Signature]</i>		PERFORATED ALUMINUM	MAMARONECK, NEW YORK						
A	-	"A" HOLES ADDED	3/17/60	#	P.I.	<i>[Signature]</i>	<i>[Signature]</i>			PLATE BOTTOM						
TOLERANCES			SCALE:			MATERIAL			5052-H32		ANTENNA TUNER					
DEC. DIM. ±			MAXIMUM ALLOWABLE TOLERANCES HAVE BEEN DETERMINED AND ANY DEVIATIONS WILL BE CAUSE FOR REJECTION. REMOVE ALL BURRS AND SHARP EDGES			TYPE & TEMPER			S 404 IRIDITE		FINAL APPROVAL					
FRAC. DIM. ±						HEAT TREAT. SPEC.			DRAWN			<i>[Signature]</i>	MECH. DES. APP			
ANGULAR DIM. ±						FINISH & SPEC. NO.			ELEC. DES. APP				MS-2093			D

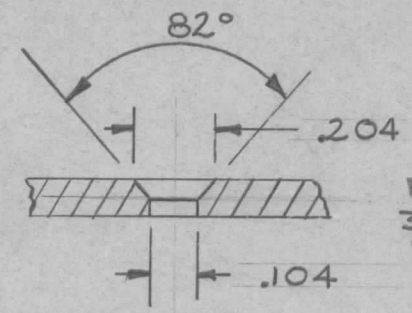
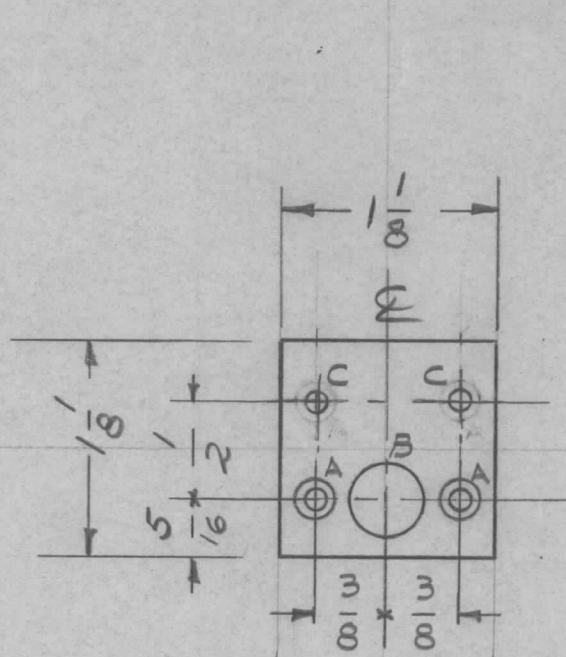
REQ. PER UNIT	USED ON			MS-2094 A
	MODEL	ASS'Y. NO.	DATE	
1	GPT-40K	AX-209	3/7/60	



A ~ 3/8 D. HOLES 1 REQ.
 B ~ 3/16 X 3/8 SLOT 2 REQ.
 C ~ 3/8 X 1/2 SLOT 1 REQ.

ISSUE	ITEM	CHANGED FROM	DATE	CH. NO.	DRAFTS	CHECKER	ENG. APP.	REQ.	ITEM	PART NO.	DESCRIPTION	SYMBOL	
A	2	"A" HOLE WAS 2 REQ	5-9-63	8968						1/8	THE TECHNICAL MATERIEL CORP. MAMARONECK, NEW YORK	PLATE, SHAFT, ADJUST P.A. DECK	
	1	ADDED "C" SLOT, WAS "A" HOLE								ALUMINUM			
TOLERANCES			SCALE: FULL			5052-H32		TYPE & TEMPER		HEAT TREAT. SPEC.	DRAWN	CHECKED	FINAL APPROVAL
DEC. DIM. ±			MAXIMUM ALLOWABLE TOLERANCES HAVE BEEN DETERMINED AND ANY DEVIATIONS WILL BE CAUSE FOR REJECTION. REMOVE ALL BURRS AND SHARP EDGES			S404 IRIDITE		FINISH & SPEC. NO.		ELEC. DES. APP		MECH. DES. APP	
FRAC. DIM. ± 1/64						5052-H32		S404 IRIDITE					
ANGULAR DIM. ±													

REQ. PER UNIT	USED ON			MS-2098	A
	MODEL	ASS'Y. NO.	DATE		
	GPT-40K	AP-103	3-7-60		



For
3-48
FHS

"A" 2-REQ.
B-3/8 D 1 "
C-1/64 D. 2 REQ.

FINISH - (All Surfaces)
S404 - Iridite
S114 - Zinc Chromate Primer
S115 - Smooth Grey Enamel

MS-2098-1
FINISH ALL SURFACES
S404 YEL IRIDITE
MS-2098-2 { S114 ZINC CHROMATE PRIMER
S788 BLK VINYL CORITEX PAINT

REQ.	ITEM	PART NO.	DESCRIPTION				SYMBOL	
		.081	THE TECHNICAL MATERIEL CORP.					
		STOCK SIZE	MAMARONECK, NEW YORK					
		ALUMINUM	PLATE, LOCK, FUSE DOOR					
		MATERIAL						
A	1	MS-2098-2 FIN. ADDED MS-2098-DESIG ADDED	10/1/63	10107	AD	JR	MS	
ISSUE	ITEM	CHANGED FROM	DATE	CH. NO.	DRAFTS	CHECKER	ENG. APP.	
TOLERANCES			SCALE: FULL					
DEC. DIM. ±			MAXIMUM ALLOWABLE TOLERANCES HAVE BEEN DETERMINED AND ANY DEVIATIONS WILL BE CAUSE FOR REJECTION. REMOVE ALL BURRS AND SHARP EDGES					
FRAC. DIM. ±								
ANGULAR DIM. ±								
1/64			5052-H32					
			TYPE & TEMPER		HEAT TREAT. SPEC.		DRAWN	
			See Note 1				Jorillo 16	
			FINISH & SPEC. NO.		ELEC. DES. APP		MECH. DES. APP	
							MS-2098 A	