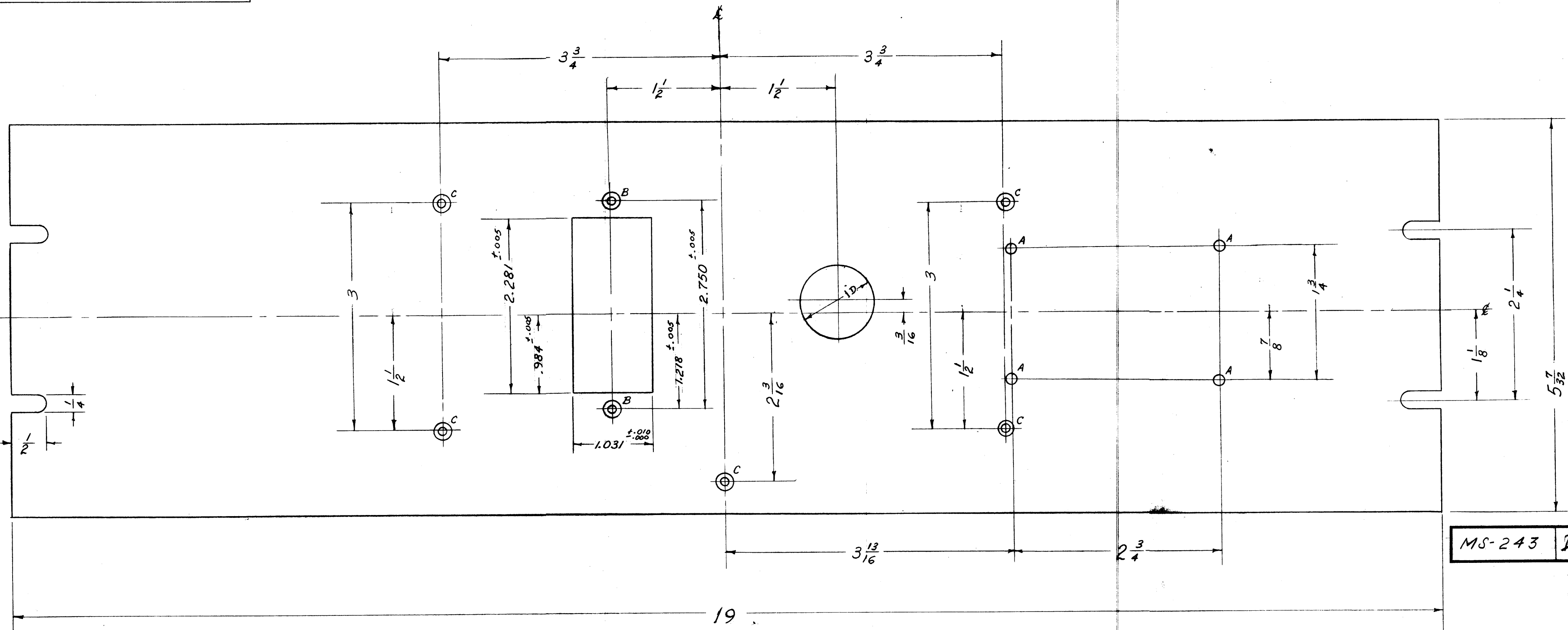


IF IT IS FOUND DESIRABLE TO CHANGE ANY TOLERANCE OR OTHER DETAIL SPECIFIED ON THIS DRAWING NOTIFY THE PURCHASER PROMPTLY.

MAXIMUM ALLOWABLE TOLERANCES HAVE BEEN DETERMINED AND DEVIATIONS WILL BE CAUSE FOR REJECTION. REMOVE ALL BURRS AND SHARP EDGES



MS-243 D

19  
FRONT VIEW SHOWN

- A- #47(.078) DRILL 4 HOLES REQ.
- B- DRILL & C.S.K. FOR 6-32 FLAT HD. SCREW 2 HOLES REQ.
- C- DRILL & C.S.K. FOR 8-32 FLAT HD. SCREW 5 HOLES REQ.

NOTE FINISH:  
 S-104 YEL IRIDITE  
 S-114 ZINC CHROMATE PRIMER } PAINT ONLY FRONT &  
 S-115 SMOOTH GRAY ENAMEL } EDGES OF PANEL

NOTICE TO PERSONS RECEIVING THIS DRAWING

THE TECHNICAL MATERIEL CORPORATION claims proprietary right in the material disclosed herein. This drawing is issued in confidence for engineering information only and may not be reproduced or used to manufacture anything shown hereon without permission from THE TECHNICAL MATERIEL CORPORATION to the user. This drawing is loaned for mutual assistance and is subject to recall at any time.

Property of:  
 THE TECHNICAL MATERIEL CORPORATION  
 MAMARONECK, NEW YORK

REQ. ITEM	PART NO.	DESCRIPTION	SYMBOL
	3/16 THK.	THE TECHNICAL MATERIEL CORP. MAMARONECK, NEW YORK	
STOCK SIZE		FRONT PANEL	
MATERIAL	WEIGHT PER PC.	MODEL DCP	
ALUMINUM	—		
24S-T3			
TYPE & TEMPER		DR. 4-12-55	
		DRAWN	ELEC. DES. APP. MECH. DES. APP.
HEAT TREAT. SPEC.		CHECKED	FINAL APPROVAL
SEE NOTE:			
FINISH & SPEC. NO.			MS-243 D

ISSUE	ITEM	CHANGED FROM	DATE	CN. NO.	DRAFTS	CHECKER	ENG. APP.
D	1	S404 - IRIDITE WKS S101 - CAUSTIC DIP	12-9-59	1001			EMM
#	#	REDRAWN - NO CHANGE	4-12-55	4	P.B.	JAK	JSC

TOLERANCES		SCALE:
ALL	DEC. DIM. ±	DRILL, PUNCH, COMMERCIAL STOCK
OTHERS	FRAC. DIM. ± Y64	SIZES AND MANUFACTURERS
	ANGULAR DIM. ±	TOLERANCES ARE NOT INCLUDED.

1	DCP	PROJECT NO.	ASS'Y. NO.	DATE
				4-12-55