

NOTICE TO PERSONS RECEIVING THIS DRAWING

THE TECHNICAL MATERIEL CORPORATION claims proprietary right in the material disclosed hereon. This drawing is issued in confidence for engineering information only and may not be reproduced or used to manufacture anything shown hereon without permission from THE TECHNICAL MATERIEL CORPORATION to the user. This drawing is loaned for mutual assistance and is subject to recall at any time.

Property of:
THE TECHNICAL MATERIEL CORPORATION
MAMARONECK, NEW YORK

A- $\frac{.221}{.224}$ D.

2 Req.

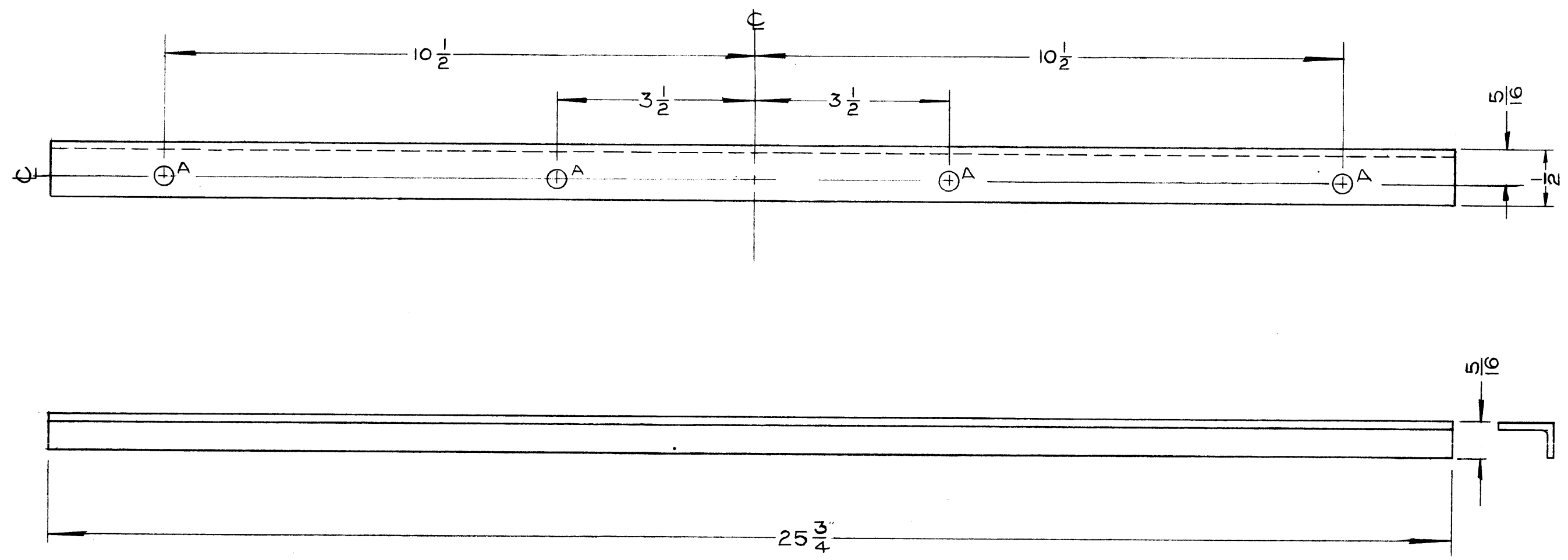
A	ADD. IT. 1 TO PICTORIAL & B/M	3/2/67	17879	HGA	JCF		
ISSUE	ITEM	CHANGED FROM	DATE	CH. NO.	DRAFTS	CHECKER	ENG. APP.
TOLERANCES		SCALE: Full					
DEC. DIM. $\pm 1/64$		MAXIMUM ALLOWABLE TOLERANCES HAVE BEEN DETERMINED AND ANY DEVIATIONS WILL BE CAUSE FOR REJECTION.					
FRAC. DIM. $\pm 1/64$		REMOVE ALL BURRS AND SHARP EDGES					
ANGULAR DIM. \pm							

1	AT-101	GPT-40K		3-12-60
REQ. PER UNIT	MODEL	PROJECT NO.	ASS'Y. NO.	DATE
USED ON				

2	1	NT 129-832-4	NUT, PLAIN, SPLINE	A
REQ. ITEM	PART NO.		DESCRIPTION	SYMBOL
.064 Thk.		THE TECHNICAL MATERIEL CORP. MAMARONECK, NEW YORK		
STOCK SIZE		COVER, CONNECTOR (TUNER UNIT)		
Aluminum		MATERIAL		
5052-H32		16 3/12/60	JCF	JCF
TYPE & TEMPER		HEAT TREAT. SPEC.	DRAWN	CHECKED
S404 Iridite				
FINISH & SPEC. NO.		ELEC. DES. APP.	MECH. DES. APP.	MS-2113 A

MS-2130

A ~ 5/32 (.156)D 4 REQ.



NOTICE TO PERSONS RECEIVING THIS DRAWING

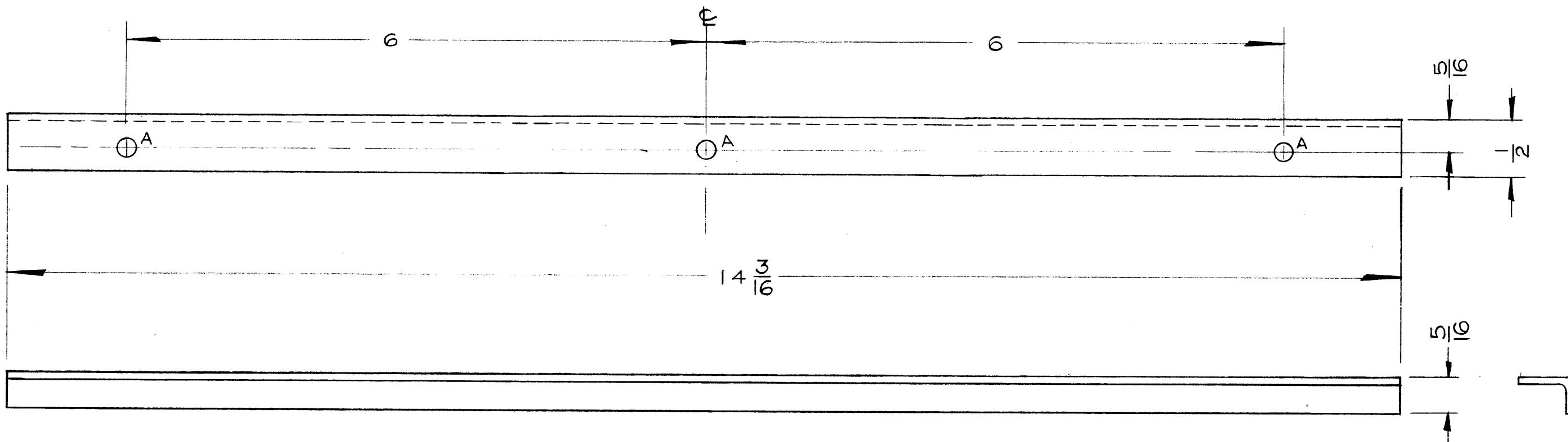
THE TECHNICAL MATERIEL CORPORATION claims proprietary right in the material disclosed hereon. This drawing is issued in confidence for engineering information only and may not be reproduced or used to manufacture anything shown hereon without permission from THE TECHNICAL MATERIEL CORPORATION to the user. This drawing is loaned for mutual assistance and is subject to recall at any time.

Property of:
THE TECHNICAL MATERIEL CORPORATION
MAMARONECK, NEW YORK

ISSUE	ITEM	CHANGED FROM	DATE	CH. NO.	DRAFTS	CHECKER	ENG. APP.
TOLERANCES		SCALE: <i>f</i>					
DEC. DIM. ±		MAXIMUM ALLOWABLE TOLERANCES HAVE BEEN DETERMINED AND ANY DEVIATIONS WILL BE CAUSE FOR REJECTION.					
FRAC. DIM. ±		REMOVE ALL BURRS AND SHARP EDGES					
ANGULAR DIM. ±							

2	GPT 40K	AX-209	3-18-60
REQ. PER UNIT	MODEL	PROJECT NO.	DATE
USED ON			

REQ. ITEM	PART NO.	DESCRIPTION	SYMBOL
	.051 THK	THE TECHNICAL MATERIEL CORP. MAMARONECK, NEW YORK	
	STOCK SIZE		
	ALUMINUM	BRACKET, PA WINDOW	
	MATERIAL	SCREEN RETAINING (TOP & BOTTOM)	
5052-H32		<i>cu</i>	<i>AW</i>
TYPE & TEMPER	HEAT TREAT. SPEC.	DRAWN	CHECKED
S404 IRIDITE			
FINISH & SPEC. NO.	ELEC. DES. APP.	MECH. DES. APP.	MS-2130



NOTICE TO PERSONS RECEIVING THIS DRAWING

THE TECHNICAL MATERIEL CORPORATION claims proprietary right in the material disclosed hereon. This drawing is issued in confidence for engineering information only and may not be reproduced or used to manufacture anything shown hereon without permission from THE TECHNICAL MATERIEL CORPORATION to the user. This drawing is loaned for mutual assistance and is subject to recall at any time.

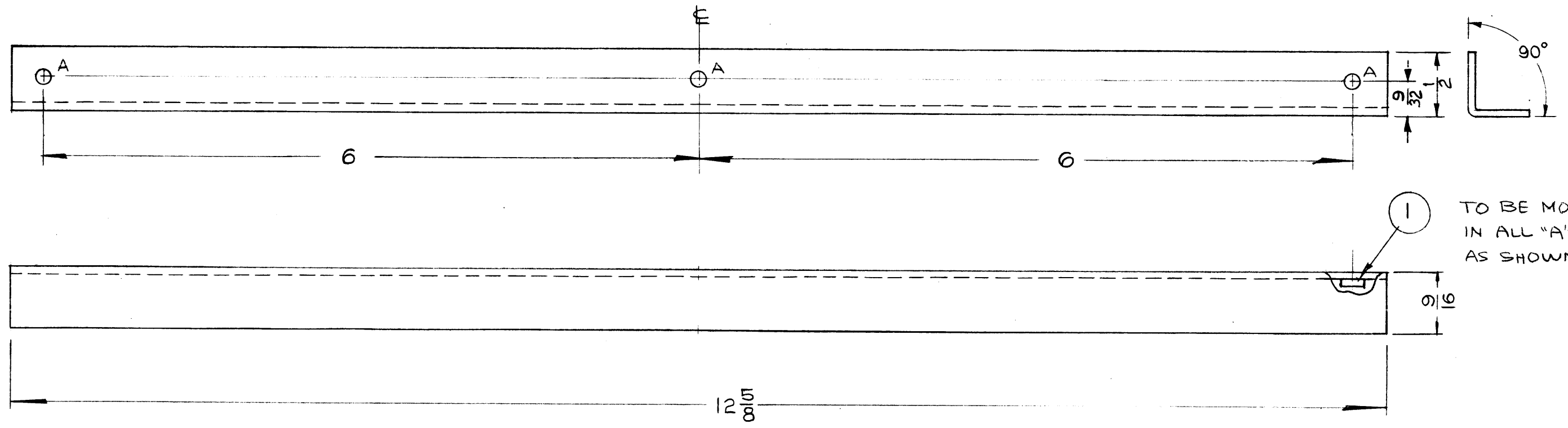
Property of:
 THE TECHNICAL MATERIEL CORPORATION
 MAMARONECK, NEW YORK

ISSUE	ITEM	CHANGED FROM	DATE	CH. NO.	DRAFTS	CHECKER	ENG. APP.
TOLERANCES		SCALE: <i>H</i>					
DEC. DIM. ±		MAXIMUM ALLOWABLE TOLERANCES HAVE BEEN DETERMINED AND ANY DEVIATIONS WILL BE CAUSE FOR REJECTION.					
FRAC. DIM. ±		REMOVE ALL BURRS AND SHARP EDGES					
ANGULAR DIM. ±							

2	GPT-40K	AX-209	3-18-60
REQ. PER UNIT	MODEL	PROJECT NO.	DATE
USED ON			

REQ. ITEM	PART NO.	DESCRIPTION	SYMBOL
	.051 THK	THE TECHNICAL MATERIEL CORP.	
	STOCK SIZE	MAMARONECK, NEW YORK	
	ALUMINUM	BRACKET, PA WINDOW	
	MATERIAL	SCREEN RETAINING (SIDES)	
5052-H32		<i>CL</i>	<i>JW</i>
TYPE & TEMPER	HEAT TREAT. SPEC.	DRAWN	CHECKED
S4-04 IRIDITE			
FINISH & SPEC. NO.	ELEC. DES. APP.	MECH. DES. APP.	MS-2131

A ~ .161 DIA. (HT-129-440-4) 3 REQ.



NOTICE TO PERSONS RECEIVING THIS DRAWING

THE TECHNICAL MATERIEL CORPORATION claims proprietary right in the material disclosed hereon. This drawing is issued in confidence for engineering information only and may not be reproduced or used to manufacture anything shown hereon without permission from THE TECHNICAL MATERIEL CORPORATION to the user. This drawing is loaned for mutual assistance and is subject to recall at any time.

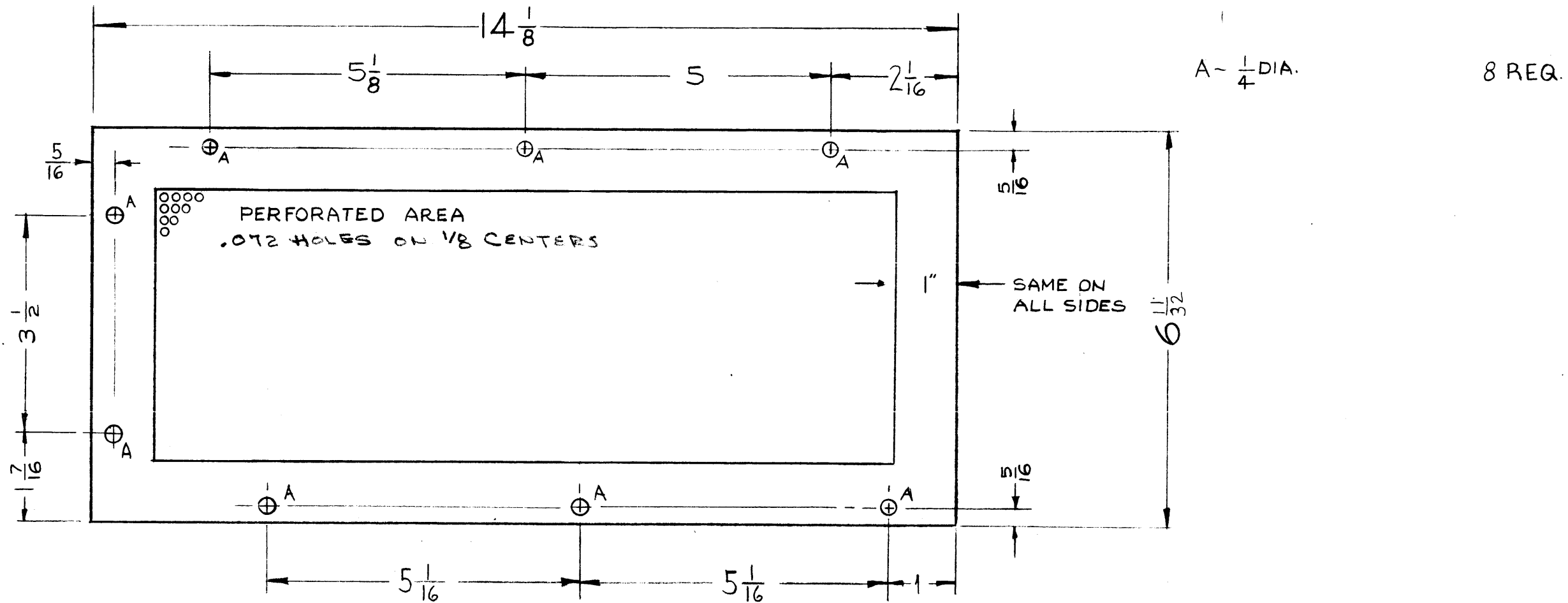
Property of:
 THE TECHNICAL MATERIEL CORPORATION
 MAMARONECK, NEW YORK

ISSUE	ITEM	CHANGED FROM	DATE	CH. NO.	DRAFTS	CHECKER	ENG. APP.
C	2	9/32 DIM. ADDED WAS 9	3-1-61	A237	MAF	JCS	JCS
B	1	1/2" DIM WAS 9/16 "A" HOLES WERE 1/8" DIA (ITEM 1 ADDED)	9-23-60	3072	CS	JCS	JCS
A		CMO-1, QUAN WAS 1	8/3/60	2702	RU	JCS	JCS

TOLERANCES		SCALE:
DEC. DIM. ±		MAXIMUM ALLOWABLE TOLERANCES HAVE BEEN DETERMINED AND ANY DEVIATIONS WILL BE CAUSE FOR REJECTION. REMOVE ALL BURRS AND SHARP EDGES
FRAC. DIM. ± 1/64		
ANGULAR DIM. ±		

1	CMO-2				
1	CMO-1,			3/9/60	
REQ. PER UNIT	MODEL	PROJECT NO.	ASS'Y. NO.	DATE	
USED ON					

3	1	NT-129-440-4	NUT, SWAGE		
REQ. ITEM	PART NO.		DESCRIPTION		SYMBOL
	.064		THE TECHNICAL MATERIEL CORP.		
	STOCK SIZE		MAMARONECK, NEW YORK		
	ALUMINUM		TRACK, RIGHT		
	MATERIAL		BOTTOM		
	52S H32	#	CS	JCS	JCS
	TYPE & TEMPER	HEAT TREAT. SPEC.	DRAWN	CHECKED	FINAL APPROVAL
	S404 YELLOW IRDITE		JCS	JCS	MS-2138 C
	FINISH & SPEC. NO.	ELEC. DES. APP.	MECH. DES. APP.		



NOTICE TO PERSONS RECEIVING THIS DRAWING

THE TECHNICAL MATERIEL CORPORATION claims proprietary right in the material disclosed hereon. This drawing is issued in confidence for engineering information only and may not be reproduced or used to manufacture anything shown hereon without permission from THE TECHNICAL MATERIEL CORPORATION to the user. This drawing is loaned for mutual assistance and is subject to recall at any time.

Property of:
THE TECHNICAL MATERIEL CORPORATION
MAMARONECK, NEW YORK

ISSUE	ITEM	CHANGED FROM	DATE	CH. NO.	DRAFTS	CHECKER	ENG. APP.
D	1	MS-1775-REF DELETED	5-9-63	8912			
C	3	DIM 6 11/32 WAS 6 7/16	11/2/60	3344			
	2	DIMS 5 5/8 ADDED, DIM 2 1/16 WAS 1					
	1	3(A) HOLES RELOCATED					
B	4	(2) "A" HOLES ADDED	8-4-60	2708	Cy		
	3	O/A DIM. 6 3/16 WAS 6 15/16					
	2	NOTCH DELETED					
A	1	1 "A" Hole Relocated	6-15-60	2459	Cy		
	3	6 15/16 DIM. RELOCATED					
	2	6 3/8 DIM. ADDED					
	1	6 5/16 WAS 6 15/16					

TOLERANCES		SCALE:
DEC. DIM. ±		MAXIMUM ALLOWABLE TOLERANCES HAVE BEEN DETERMINED AND ANY DEVIATIONS WILL BE CAUSE FOR REJECTION. REMOVE ALL BURRS AND SHARP EDGES
FRAC. DIM. ± 1/64		
ANGULAR DIM. ±		

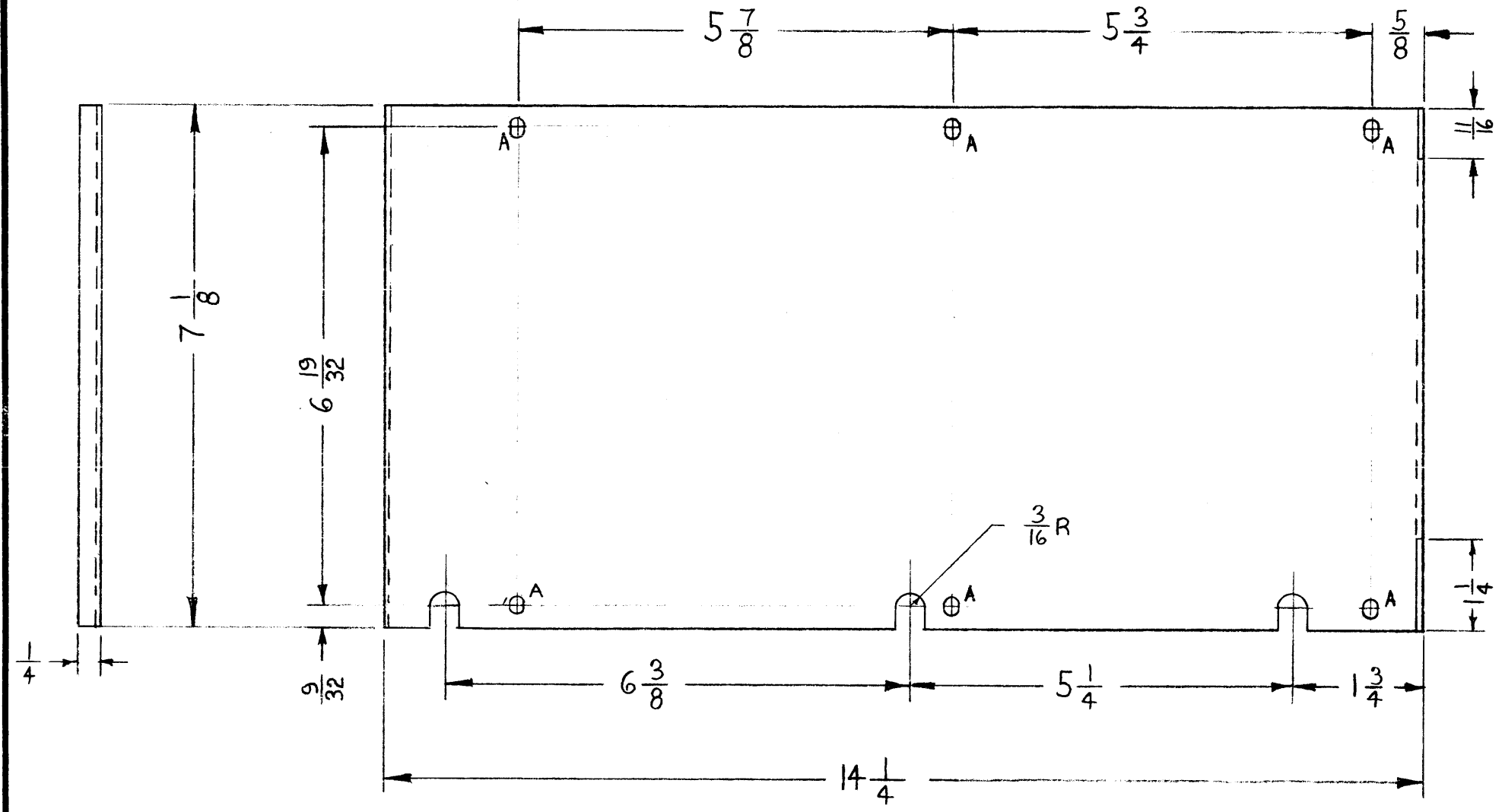
REQ. PER UNIT	MODEL	PROJECT NO.	ASS'Y. NO.	DATE
	CMO-2			3-2-60
	CMO-1			3-2-60

REQ. ITEM	PART NO.	DESCRIPTION	SYMBOL
	.051	THE TECHNICAL MATERIEL CORP. MAMARONECK, NEW YORK	
	STOCK SIZE		
	ALUMINUM (See NOTE)	TOP COVER, R.F. SECTION	
	MATERIAL		
	5052-H32		
	TYPE & TEMPER	HEAT TREAT. SPEC.	
	S404 YELL. IRIDITE		
	FINISH & SPEC. NO.	ELEC. DES. APP.	MECH. DES. APP.

MS-2139 D

MS-2140

A ~ 3/16 x 1/4 SLOT 6 REQ.



NOTICE TO PERSONS RECEIVING THIS DRAWING

THE TECHNICAL MATERIEL CORPORATION claims proprietary right in the material disclosed hereon. This drawing is issued in confidence for engineering information only and may not be reproduced or used to manufacture anything shown hereon without permission from THE TECHNICAL MATERIEL CORPORATION to the user. This drawing is loaned for mutual assistance and is subject to recall at any time.

Property of:
THE TECHNICAL MATERIEL CORPORATION
 MAMARONECK, NEW YORK

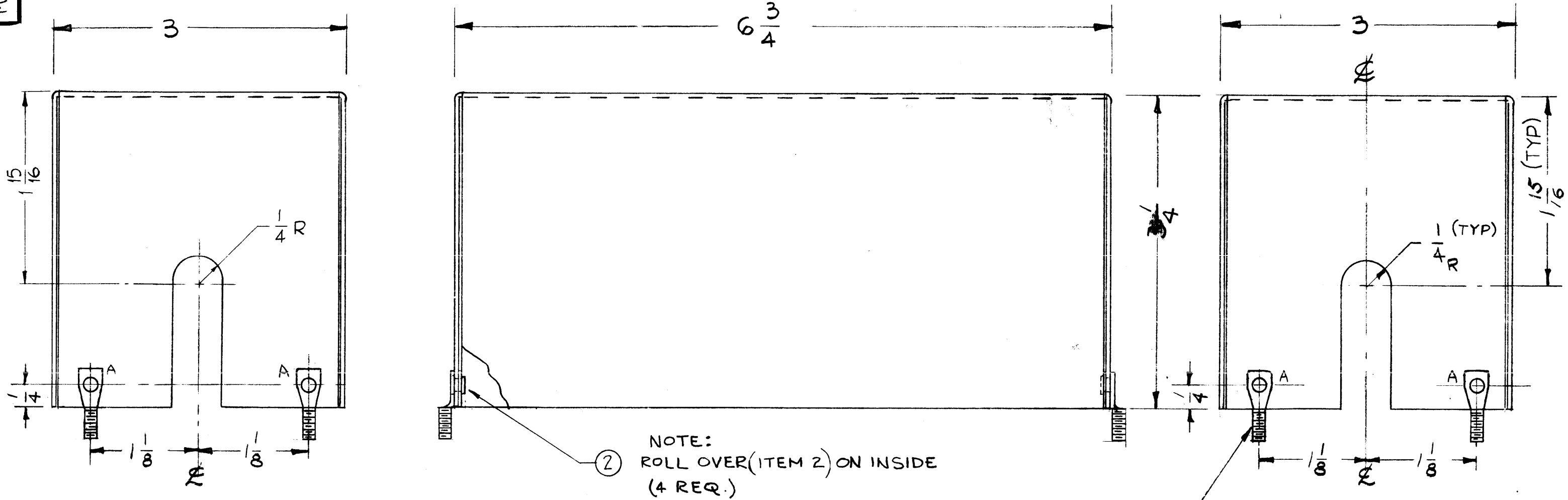
ISSUE	ITEM	CHANGED FROM	DATE	CH. NO.	DRAFTS	CHECKER	ENG. APP.
TOLERANCES		SCALE:					
DEC. DIM. ±		MAXIMUM ALLOWABLE TOLERANCES HAVE BEEN DETERMINED AND ANY DEVIATIONS WILL BE CAUSE FOR REJECTION.					
FRAC. DIM. ± 1/64		REMOVE ALL BURRS AND SHARP EDGES					
ANGULAR DIM. ±							

REQ. PER UNIT	MODEL	PR JECT NO.	ASS'Y. NO.	DATE
1	CMO-2			3-2-60
1	CMO-1			3-2-60
USED ON				

REQ. ITEM	PART NO.	DESCRIPTION	SYMBOL
.051		THE TECHNICAL MATERIEL CORP.	
		MAMARONECK, NEW YORK	
ALUMINUM		BOTTOM COVER, R.F CHASSIS	
MATERIAL			
5052-H32			
TYPE & TEMPER	HEAT TREAT. SPEC.	DRAWN	CHECKED
S404 YELL. IRIDITE			
FINISH & SPEC. NO.		ELEC. DES. APP.	MECH. DES. APP.
			MS-2140

MS-2152 C

A \surd 1/8 DIA. HOLES 4 REQ.



NOTE:
 ② ROLL OVER (ITEM 2) ON INSIDE
 (4 REQ.)

NOTICE TO PERSONS RECEIVING THIS DRAWING

THE TECHNICAL MATERIEL CORPORATION claims proprietary right in the material disclosed hereon. This drawing is issued in confidence for engineering information only and may not be reproduced or used to manufacture anything shown hereon without permission from THE TECHNICAL MATERIEL CORPORATION to the user. This drawing is loaned for mutual assistance and is subject to recall at any time.

Property of:
 THE TECHNICAL MATERIEL CORPORATION
 MAMARONECK, NEW YORK

C	1	ITEM(2) & NOTE ADDED	6-14-62	6796	G.S.	<i>[Signature]</i>	<i>[Signature]</i>
B	1	Cutout Added (to left Lip)	1-17-61	3919	RU	<i>[Signature]</i>	<i>[Signature]</i>
A	2	DIA. OF "A" HOLES ADDED	6/10/60	-	CY	<i>[Signature]</i>	<i>[Signature]</i>
	1	SPADE BOLT RELOCATED					
ISSUE	ITEM	CHANGED FROM	DATE	CH. NO.	DRAFTS	CHECKER	ENG. APP.
TOLERANCES			SCALE:				
DEC. DIM. \pm			MAXIMUM ALLOWABLE TOLERANCES HAVE BEEN DETERMINED AND ANY DEVIATIONS WILL BE CAUSE FOR REJECTION.				
FRAC. DIM. \pm			REMOVE ALL BURRS AND SHARP EDGES				
ANGULAR DIM. \pm							

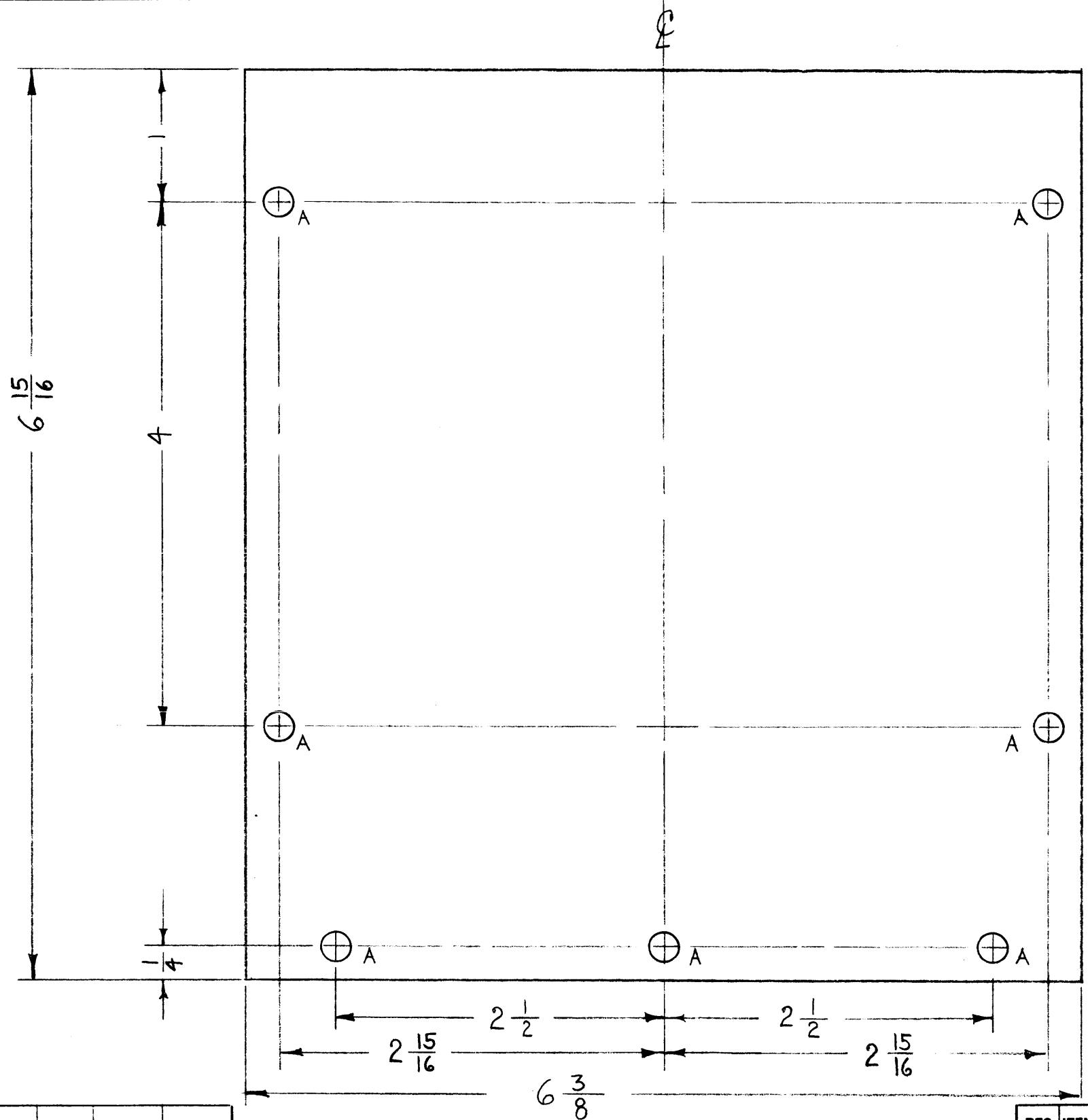
4	2	EY-100-2	EYELET, FLAT FLANGE	
4	1	SC-107-1	BOLT, SPADE	
REQ. ITEM	PART NO.		DESCRIPTION	SYMBOL
.051			THE TECHNICAL MATERIEL CORP.	
ALUMINUM			MAMARONECK, NEW YORK	
5052-H32			CONDENSER SHIELD	
MATERIAL				
TYPE & TEMPER			HEAT TREAT. SPEC.	DRAWN
6404-YEL. IRIDITE				CHECKED
FINISH & SPEC. NO.			ELEC. DES. APP.	MECH. DES. APP.
			<i>[Signature]</i>	<i>[Signature]</i>
			MS-2152	C

1	CMO			3-21-60
REQ. PER UNIT	MODEL	PROJECT NO.	ASSY. NO.	DATE
USED ON				

MS-2165

A-7/32 (.218) D

7 REQ.



NOTICE TO PERSONS RECEIVING THIS DRAWING

THE TECHNICAL MATERIEL CORPORATION claims proprietary right in the material disclosed hereon. This drawing is issued in confidence for engineering information only and may not be reproduced or used to manufacture anything shown hereon without permission from THE TECHNICAL MATERIEL CORPORATION to the user. This drawing is loaned for mutual assistance and is subject to recall at any time.

Property of:
THE TECHNICAL MATERIEL CORPORATION
MAMARONECK, NEW YORK

ISSUE	ITEM	CHANGED FROM	DATE	CH. NO.	DRAFTS	CHECKER	ENG. APP.
TOLERANCES			SCALE:				
DEC. DIM. ±			MAXIMUM ALLOWABLE TOLERANCES HAVE BEEN DETERMINED AND ANY DEVIATIONS WILL BE CAUSE FOR REJECTION. REMOVE ALL BURRS AND SHARP EDGES				
FRAC. DIM. ±							
ANGULAR DIM. ±							

REQ. PER UNIT	MODEL	PROJECT NO.	ASS'Y. NO.	DATE
1	GPT-40K	AX-209		3-30-60
USED ON				

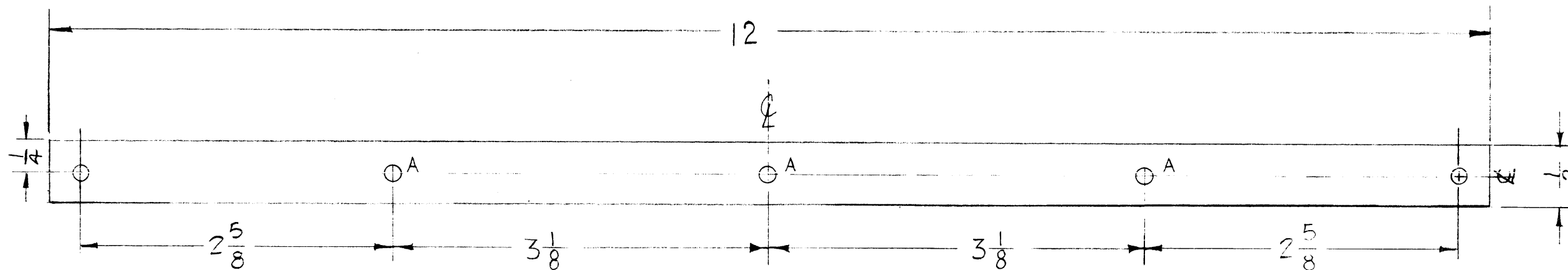
REQ. ITEM	PART NO.	DESCRIPTION			SYMBOL
.064		THE TECHNICAL MATERIEL CORP. MAMARONECK, NEW YORK			
	STOCK SIZE	COVER,			
ALUMINUM		PA FIL. STUD SHIELD			
	MATERIAL				
5052-H32		MF	JD	DB	
	TYPE & TEMPER	DRAWN	CHECKED	FINAL APPROVAL	
	HEAT TREAT. SPEC.				
	FINISH & SPEC. NO.			MS-2165	
		ELEC. DES. APP.	MECH. DES. APP.		

NOTICE TO PERSONS RECEIVING THIS DRAWING

THE TECHNICAL MATERIEL CORPORATION claims proprietary right in the material disclosed hereon. This drawing is issued in confidence for engineering information only and may not be reproduced or used to manufacture anything shown hereon without permission from THE TECHNICAL MATERIEL CORPORATION to the user. This drawing is loaned for mutual assistance and is subject to recall at any time.

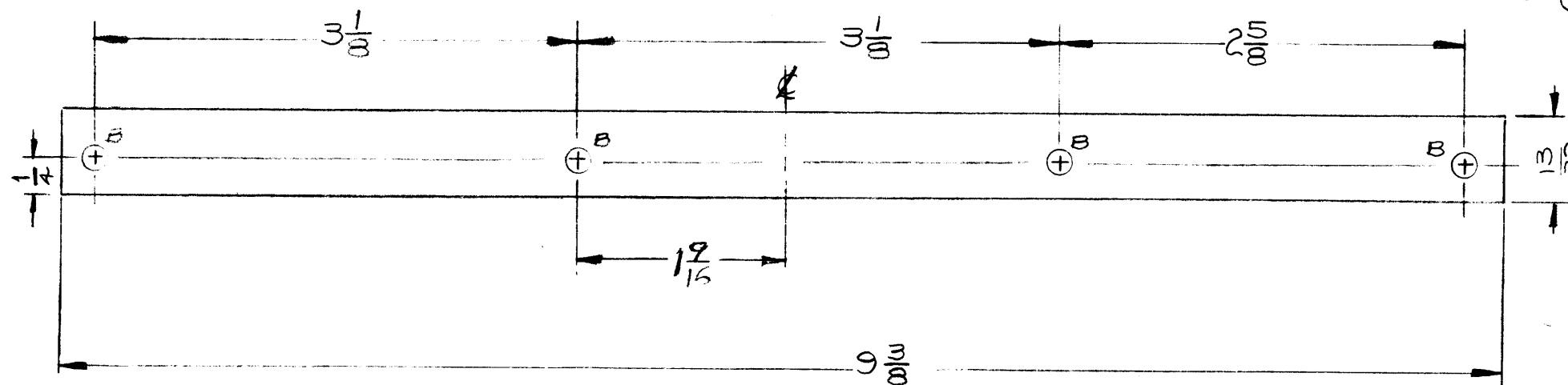
Property of:
THE TECHNICAL MATERIEL CORPORATION
MAMARONECK, NEW YORK

MESH STRIP, FRONT
MS 2173-1



MESH STRIP, REAR
MS-2173-2

B ~ (.128) D 4 REQ



REF: MS-2004

ISSUE	ITEM	CHANGED FROM	DATE	CH. NO.	DRAFTS	CHECKER	ENG. APP.
A	1	DWG REVISED	8-16-60	2810	RU	JCB	MC
TOLERANCES			SCALE:				
DEC. DIM. ±			MAXIMUM ALLOWABLE TOLERANCES HAVE BEEN DETERMINED AND ANY DEVIATIONS WILL BE CAUSE FOR REJECTION.				
FRAC. DIM. ± 1/64			REMOVE ALL BURRS AND SHARP EDGES				
ANGULAR DIM. ±							

2	GPT-40K	AX-208	4-7-60
REQ. PER UNIT	MODEL	PROJECT NO.	ASS'Y. NO.
USED ON			

REQ. ITEM	PART NO.	DESCRIPTION	SYMBOL
.091		THE TECHNICAL MATERIEL CORP. MAMARONECK, NEW YORK	
ALUMINUM		STRIP, MESH, FRONT & REAR PA TOP SHIELD	
5052-H32			
S404 YELL IRIDITE			
FINISH & SPEC. NO.		ELEC. DES. APP.	MECH. DES. APP.
		MS-2173	A