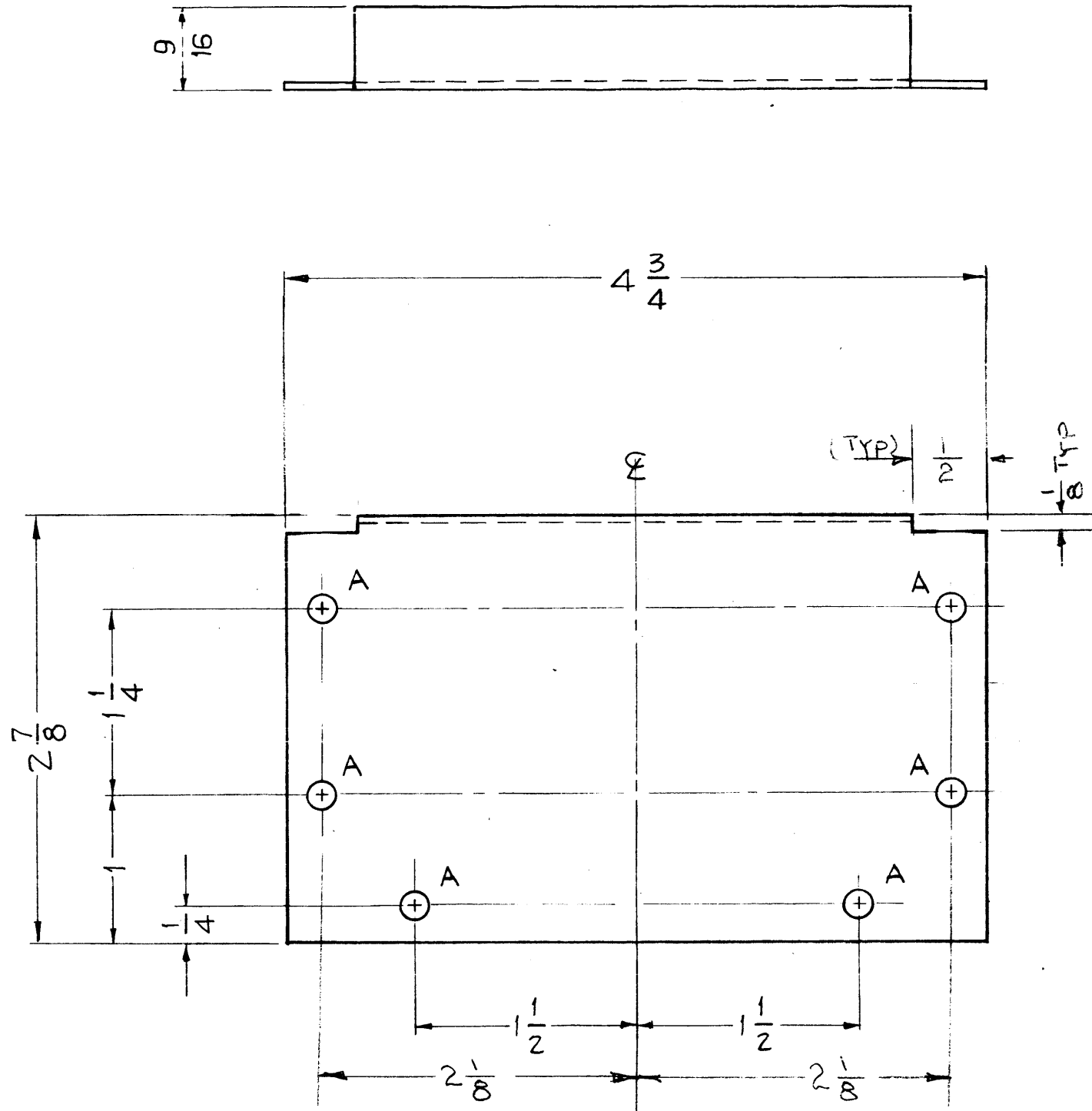


MS-2215 A

HOLES ~

A ~ 3/16 (.187) DIA.

6 REQ.



NOTICE TO PERSONS RECEIVING THIS DRAWING

THE TECHNICAL MATERIEL CORPORATION claims proprietary right in the material disclosed hereon. This drawing is issued in confidence for engineering information only and may not be reproduced or used to manufacture anything shown hereon without permission from THE TECHNICAL MATERIEL CORPORATION to the user. This drawing is loaned for mutual assistance and is subject to recall at any time.

Property of:

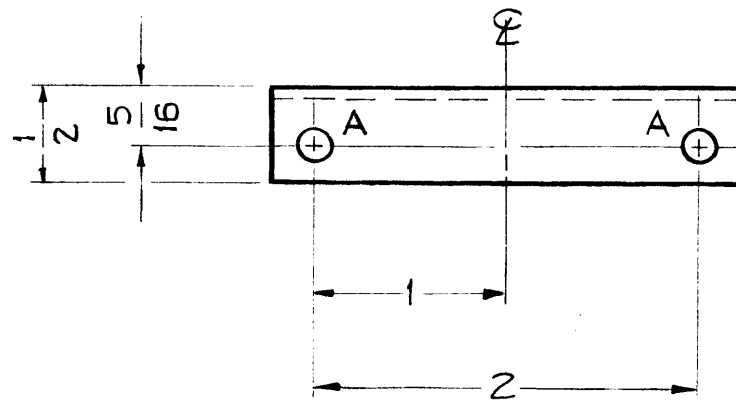
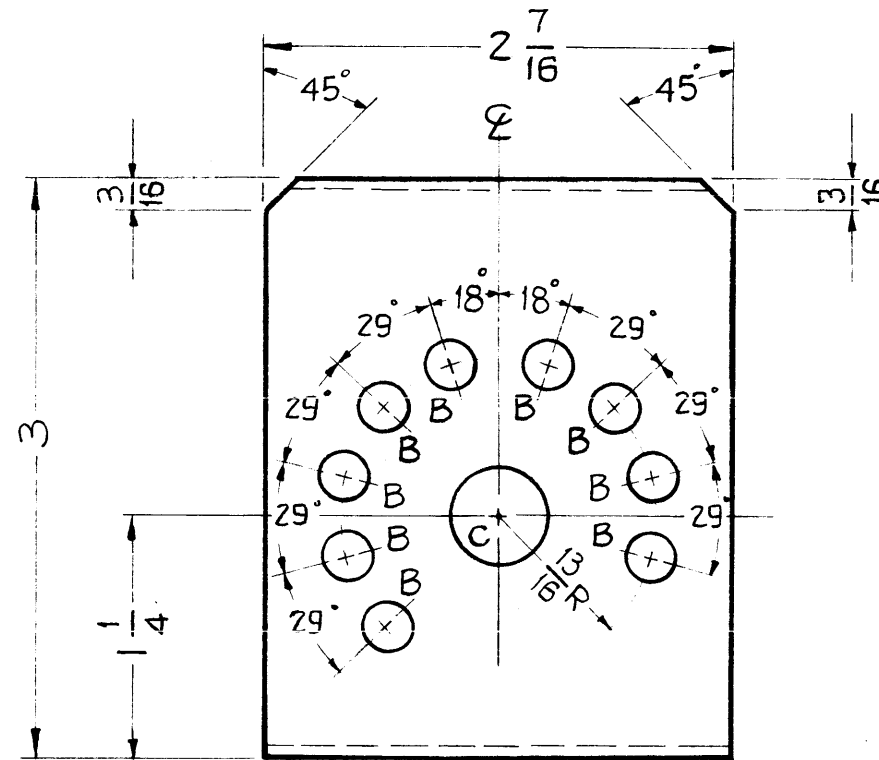
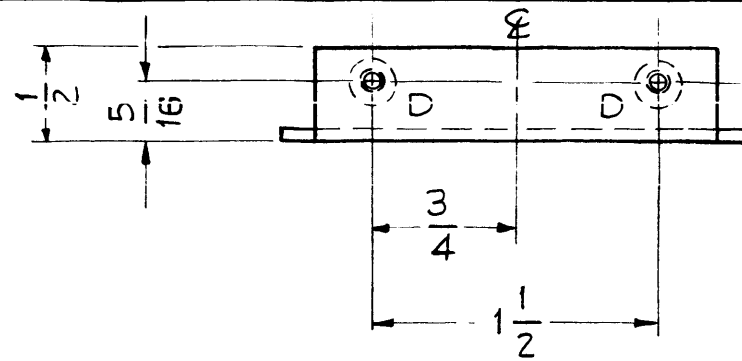
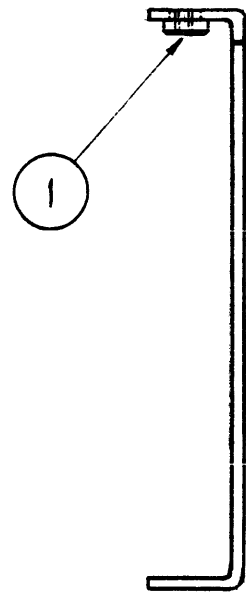
THE TECHNICAL MATERIEL CORPORATION  
MAMARONECK, NEW YORK

ISSUE ITEM	CHANGED FROM	DATE	CH. NO.	DRAFTS	CHECKER	ENG. APP.
A 1	DIMEN. CLARIFIED	10/5/60	-			
TOLERANCES		SCALE: FULL DO NOT SCALE				
DEC. DIM. ±		MAXIMUM ALLOWABLE TOLERANCES HAVE BEEN DETERMINED AND ANY DEVIATIONS WILL BE CAUSE FOR REJECTION.				
FRAC. DIM. ± 1/64		REMOVE ALL BURRS AND SHARP EDGES				
ANGULAR DIM. ±						

REQ. PER UNIT	MODEL	PROJECT NO.	ASS'Y. NO.	DATE
2	CLL-1			4 - 26 - 60
USED ON				

REQ. ITEM	PART NO.	DESCRIPTION	SYMBOL
	.051	THE TECHNICAL MATERIEL CORP. MAMARONECK, NEW YORK	
	STOCK SIZE		
	ALUMINUM	PLATE, FRONT & REAR	
	MATERIAL	SHELL, OVEN	
5052-H32		J.C. Biele	
TYPE & TEMPER	HEAT TREAT. SPEC.	DRAWN	CHECKED
S404 - IRIDITE			
FINISH & SPEC. NO.	ELEC. DES. APP.	MECH. DES. APP.	FINAL APPROVAL
			MS-2215 A

MS-2219



HOLES ~

- A ~ 11/64 (.171) DIA. 2 REQ.
  - B ~ 1/4 (.250) DIA 9 REQ.
  - C ~ 1/2 (.500) DIA. 1 REQ.
  - D ~ .161 MIN., .164 MAX. DIA'S. 2 REQ.
- FOR NT129-440-4

NOTICE TO PERSONS RECEIVING THIS DRAWING

THE TECHNICAL MATERIEL CORPORATION claims proprietary right in the material disclosed hereon. This drawing is issued in confidence for engineering information only and may not be reproduced or used to manufacture anything shown hereon without permission from THE TECHNICAL MATERIEL CORPORATION to the user. This drawing is loaned for mutual assistance and is subject to recall at any time.

Property of:  
THE TECHNICAL MATERIEL CORPORATION  
MAMARONECK, NEW YORK

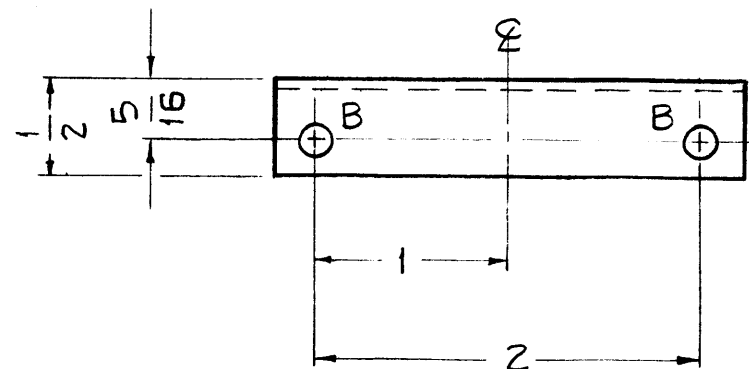
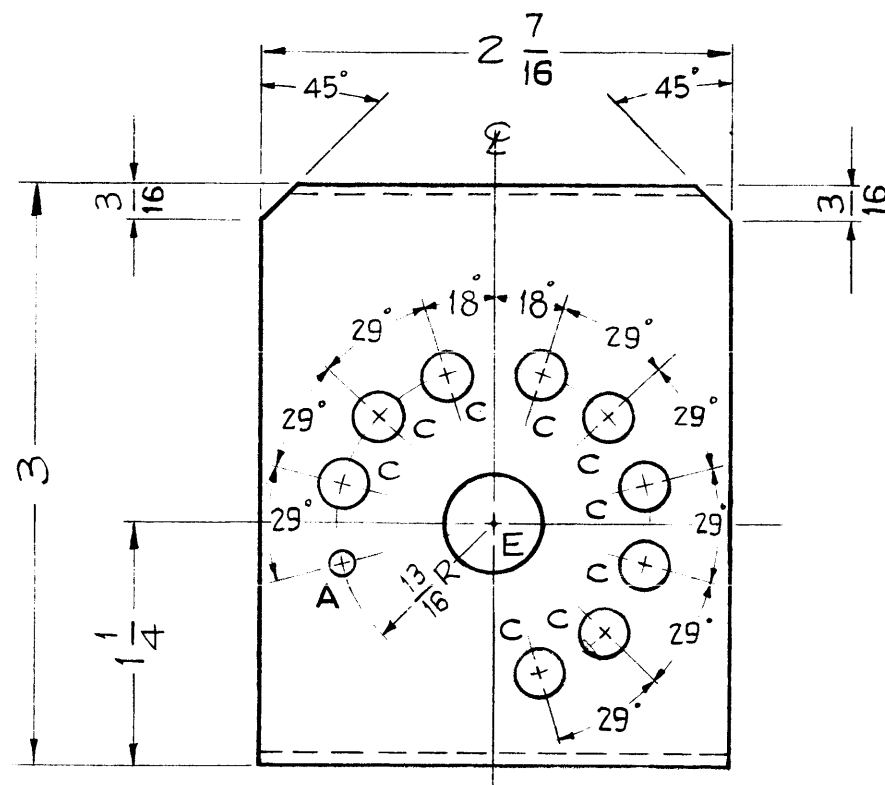
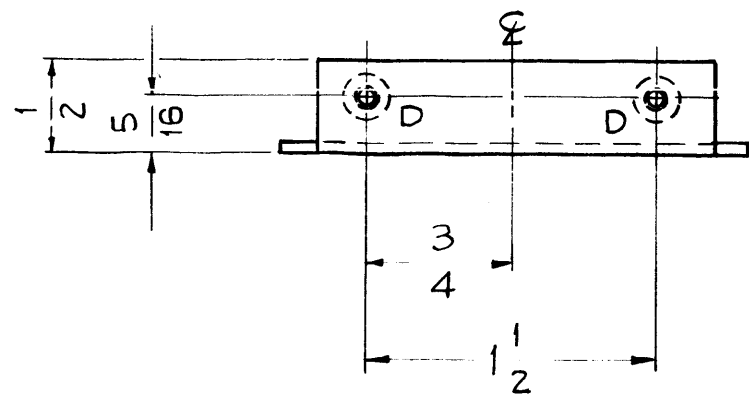
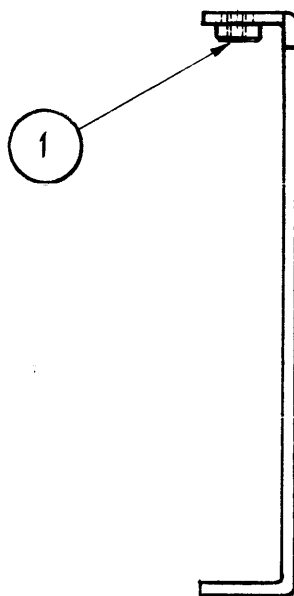
REF. LD-749

2	1	NT129-440-4	NUT, ROUND, SWAGE TYPE		
REQ. ITEM	PART NO.		DESCRIPTION		SYMBOL
.064			THE TECHNICAL MATERIEL CORP.		
STOCK SIZE			MAMARONECK, NEW YORK		
ALUMINUM			BRACKET, RIGHT SIDE		
MATERIAL			CAPACITOR MOUNTING		
5052-H32			J.C. Biele		
TYPE & TEMPER		HEAT TREAT. SPEC.	DRAWN	CHECKED	FINAL APPROVAL
S404-IRIDITE					
FINISH & SPEC. NO.		ELEC. DES. APP.		MECH. DES. APP.	MS-2219

ISSUE	ITEM	CHANGED FROM	DATE	CH. NO.	DRAFTS	CHECKER	ENG. APP.
TOLERANCES			SCALE: FULL, DO NOT SCALE				
DEC. DIM. ±			MAXIMUM ALLOWABLE TOLERANCES HAVE BEEN DETERMINED AND ANY DEVIATIONS WILL BE CAUSE FOR REJECTION.				
FRAC. DIM. ± 1/64			REMOVE ALL BURRS AND SHARP EDGES				
ANGULAR DIM. ± 1/2°							

1	CLL-1			4 - 29 - 60
REQ. PER UNIT	MODEL	PROJECT NO.	ASS'Y. NO.	DATE
USED ON				

MS-2220



HOLES ~

- A ~ 1/8 (.125) DIA. 1 REQ.
- B ~ 11/64 (.171) DIA. 2 REQ.
- C ~ 1/4 (.250) DIA. 9 REQ.
- D ~ .161 MIN., .164 MAX. DIA'S. 2 REQ.  
FOR NT129-440-4
- E ~ 1/2 (.500) DIA. 1 REQ.

NOTICE TO PERSONS RECEIVING THIS DRAWING

THE TECHNICAL MATERIEL CORPORATION claims proprietary right in the material disclosed hereon. This drawing is issued in confidence for engineering information only and may not be reproduced or used to manufacture anything shown hereon without permission from THE TECHNICAL MATERIEL CORPORATION to the user. This drawing is loaned for mutual assistance and is subject to recall at any time.

Property of:

THE TECHNICAL MATERIEL CORPORATION  
MAMARONECK, NEW YORK

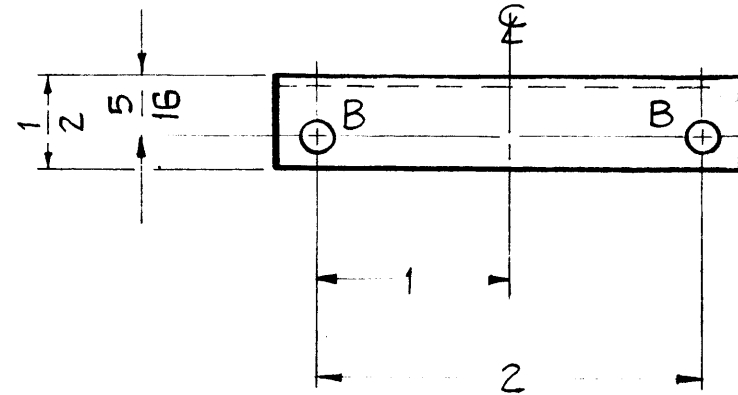
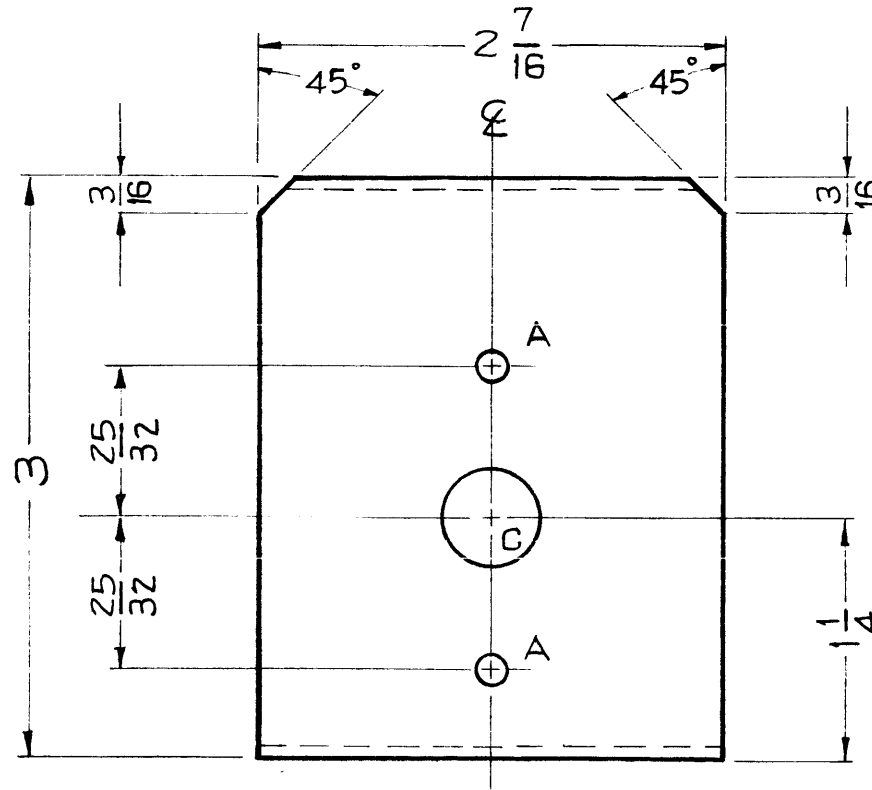
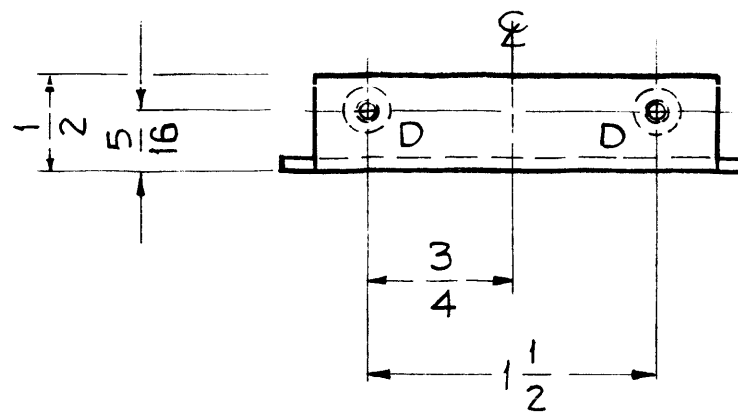
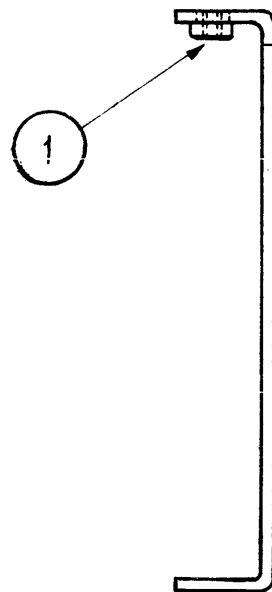
REF. LD-750

2	1	NT129-440-4	NUT, ROUND, SWAGE TYPE	
REQ. ITEM		PART NO.	DESCRIPTION	SYMBOL
		.064	THE TECHNICAL MATERIEL CORP. MAMARONECK, NEW YORK	
		ALUMINUM	BRACKET, LEFT SIDE	
			CAPACITOR MOUNTING	
		5052-H32	J.C. Biele	
		TYPE & TEMPER	DRAWN	CHECKED
		HEAT TREAT. SPEC.	J.D.	MS-2220
		5404 ~ IRIDITE	ELEC. DES. APP.	MECH. DES. APP.
		FINISH & SPEC. NO.		

ISSUE	ITEM	CHANGED FROM	DATE	CH. NO.	DRAFTS	CHECKER	ENG. APP.
TOLERANCES			SCALE: FULL, DO NOT SCALE				
DEC. DIM. ±			MAXIMUM ALLOWABLE TOLERANCES HAVE BEEN DETERMINED AND ANY DEVIATIONS WILL BE CAUSE FOR REJECTION.				
FRAC. DIM. ± 1/64			REMOVE ALL BURRS AND SHARP EDGES				
ANGULAR DIM. ± 1/2°							

1	CLL-1			4-28-60
REQ. PER UNIT	MODEL	PROJECT NO.	ASS'Y. NO.	DATE
USED ON				

MS-2221 A



HOLES ~

- A ~ 5/32 (.156) DIA. 2 REQ.
  - B ~ 11/64 (.171) DIA. 2 REQ.
  - C ~ 1/2 (.500) DIA. 1 REQ.
  - D ~ .161 MIN. .164 MAX. DIA'S. 2 REQ.
- FOR NT129-440-4

NOTICE TO PERSONS RECEIVING THIS DRAWING

THE TECHNICAL MATERIEL CORPORATION claims proprietary right in the material disclosed hereon. This drawing is issued in confidence for engineering information only and may not be reproduced or used to manufacture anything shown hereon without permission from THE TECHNICAL MATERIEL CORPORATION to the user. This drawing is loaned for mutual assistance and is subject to recall at any time.

Property of:

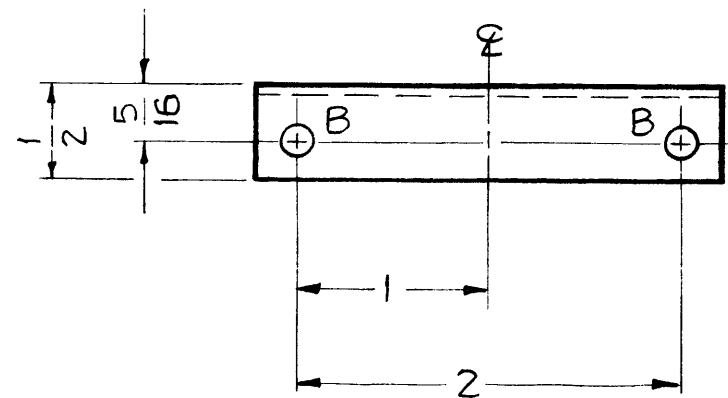
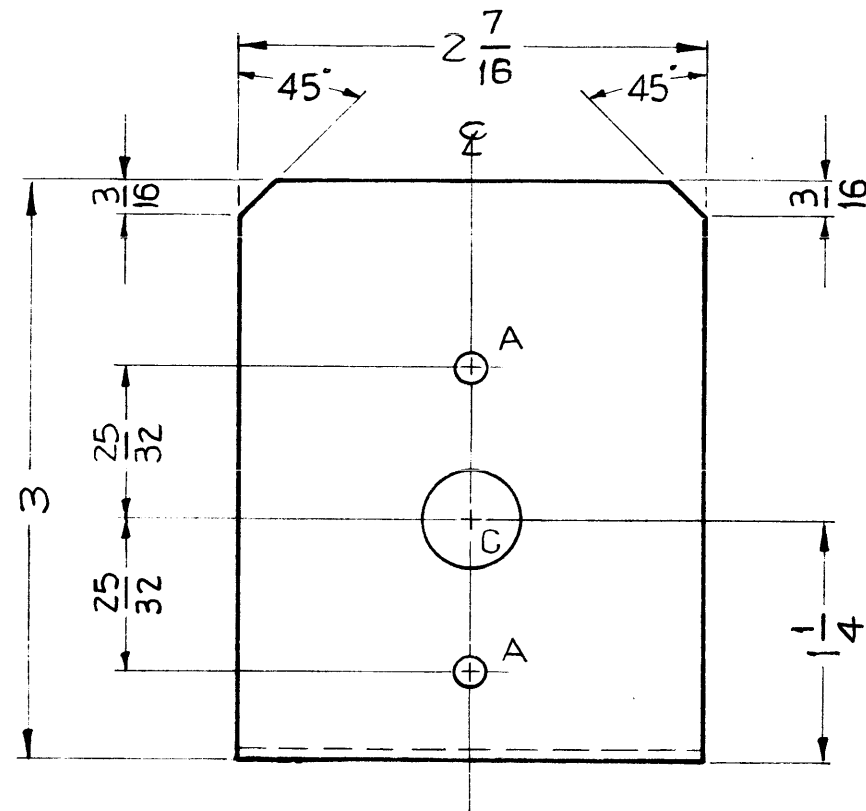
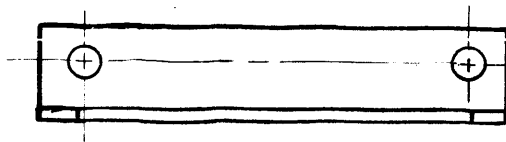
THE TECHNICAL MATERIEL CORPORATION  
MAMARONECK, NEW YORK

A 1	PICT. REVISED	10/30/63	10302	MA	MA	MA	MA
ISSUE ITEM	CHANGED FROM	DATE	CH. NO.	DRAFTS	CHECKER	ENG. APP.	
TOLERANCES		SCALE: FULL, DO NOT SCALE					
DEC. DIM. ±		MAXIMUM ALLOWABLE TOLERANCES HAVE BEEN DETERMINED AND ANY DEVIATIONS WILL BE CAUSE FOR REJECTION.					
FRAC. DIM. ± 1/64		REMOVE ALL BURRS AND SHARP EDGES					
ANGULAR DIM. ± 1/2°							

1	CLL - 1			5 - 2 - 60
REQ. PER UNIT	MODEL	PROJECT NO.	ASS'Y. NO.	DATE
USED ON				

2	1	NT129-440-4	NUT, ROUND, SWAGE TYPE		
REQ. ITEM	PART NO.		DESCRIPTION		SYMBOL
.064			THE TECHNICAL MATERIEL CORP. MAMARONECK, NEW YORK		
STOCK SIZE			BRACKET, FRONT SWITCH MOUNTING		
ALUMINUM			MATERIAL		
5052-H32			J.C. Biele		
TYPE & TEMPER			HEAT TREAT. SPEC.	DRAWN	CHECKED
5404 - IRIDITE					
FINISH & SPEC. NO.			ELEC. DES. APP.	MECH. DES. APP.	FINAL APPROVAL
					MS-2221 A

MS-2222



HOLES~

A ~ 5/32 (.156) DIA. 2 REQ.

B ~ 11/64 (.171) DIA. 2 REQ.

C ~ 1/2 (.500) DIA. 1 REQ.

NOTICE TO PERSONS RECEIVING THIS DRAWING

THE TECHNICAL MATERIEL CORPORATION claims proprietary right in the material disclosed hereon. This drawing is issued in confidence for engineering information only and may not be reproduced or used to manufacture anything shown hereon without permission from THE TECHNICAL MATERIEL CORPORATION to the user. This drawing is loaned for mutual assistance and is subject to recall at any time.

Property of:

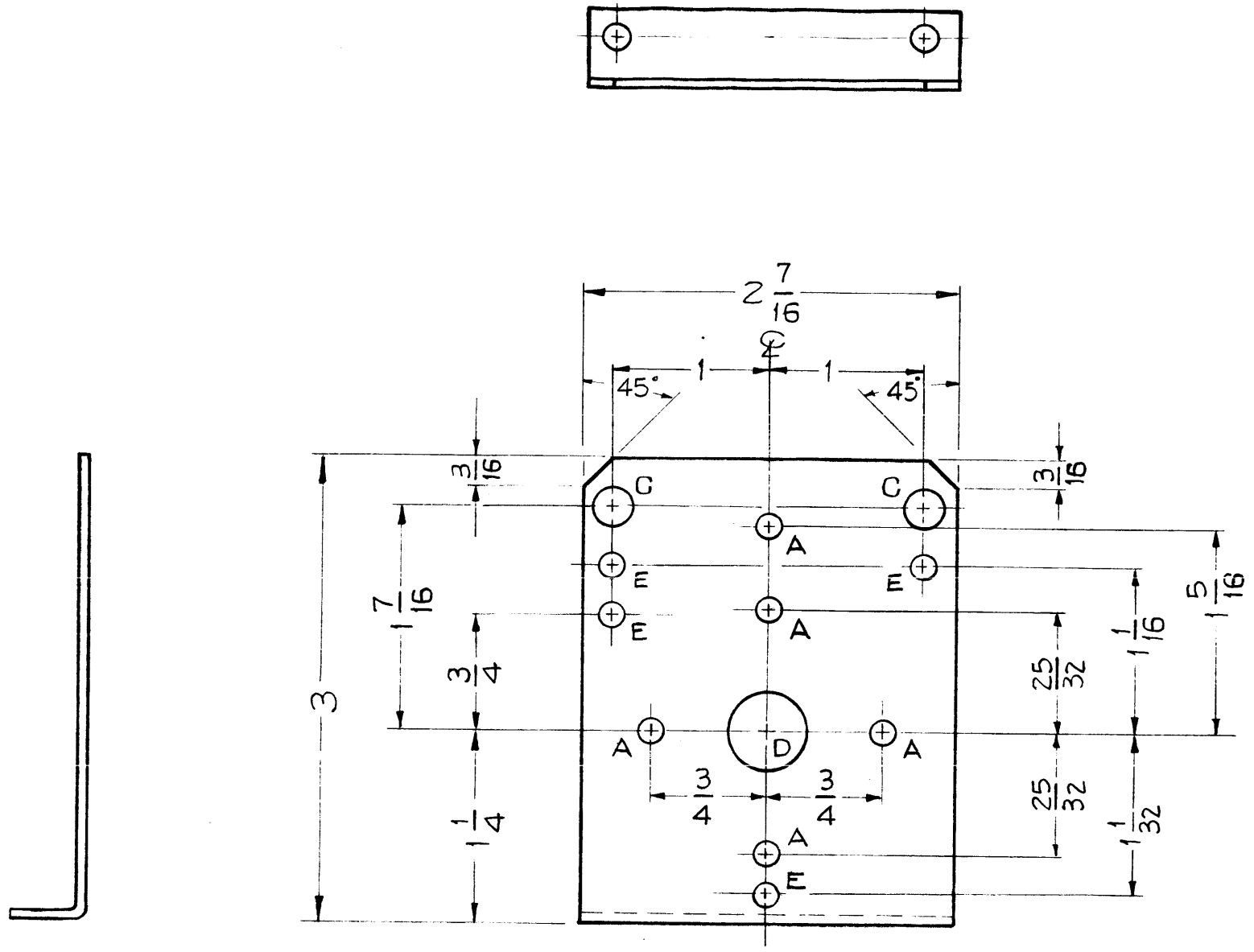
THE TECHNICAL MATERIEL CORPORATION  
MAMARONECK, NEW YORK

ISSUE	ITEM	CHANGED FROM	DATE	CH. NO.	DRAFTS	CHECKER	ENG. APP.
TOLERANCES		SCALE: FULL, DO NOT SCALE					
DEC. DIM. ±		MAXIMUM ALLOWABLE TOLERANCES HAVE BEEN DETERMINED AND ANY DEVIATIONS WILL BE CAUSE FOR REJECTION.					
FRAC. DIM. ± 1/64		REMOVE ALL BURRS AND SHARP EDGES					
ANGULAR DIM. ± 1/2°							

9	CLL-1			5-2-60
REQ. PER UNIT	MODEL	PROJECT NO.	ASS'Y. NO.	DATE
USED ON				

REQ. ITEM	PART NO.	DESCRIPTION	SYMBOL
.064		THE TECHNICAL MATERIEL CORP.	
STOCK SIZE		MAMARONECK, NEW YORK	
ALUMINUM		BRACKET,	
MATERIAL		SWITCH MOUNTING	
5052-H32		J.C. Biele	
TYPE & TEMPER	HEAT TREAT. SPEC.	DRAWN	CHECKED
S404-IRIDITE		J.D.	[Signature]
FINISH & SPEC. NO.		ELEC. DES. APP.	MECH. DES. APP.
			MS-2222

MS-2223, A



- HOLES ~
- A ~  $5/32$  (.156) DIA. 5 REQ.
  - B ~  $11/64$  (.171) DIA. 2 REQ.
  - C ~  $1/4$  (.250) DIA. 2 REQ.
  - D ~  $1/2$  (.500) DIA. 1 REQ.
  - E ~  $1/8$  DIA. 4 REQ.

NOTICE TO PERSONS RECEIVING THIS DRAWING

THE TECHNICAL MATERIEL CORPORATION claims proprietary right in the material disclosed hereon. This drawing is issued in confidence for engineering information only and may not be reproduced or used to manufacture anything shown hereon without permission from THE TECHNICAL MATERIEL CORPORATION to the user. This drawing is loaned for mutual assistance and is subject to recall at any time.

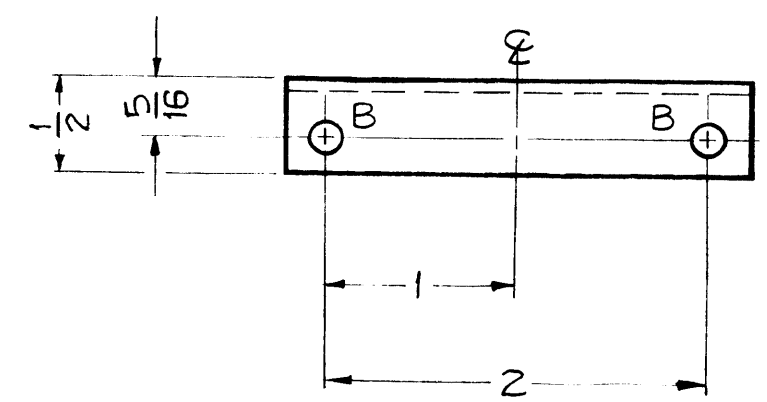
Property of:  
**THE TECHNICAL MATERIEL CORPORATION**  
 MAMARONECK, NEW YORK

ISSUE	ITEM	CHANGED FROM	DATE	CH. NO.	DRAFTS	CHECKER	ENG. APP.
A	2	(4) "E" HOLES ADDED	9-9-60		CS		J.D.
	1	(4) "A" HOLES DELETED					

TOLERANCES  
 DEC. DIM.  $\pm$   
 FRAC. DIM.  $\pm 1/64$   
 ANGULAR DIM.  $\pm$

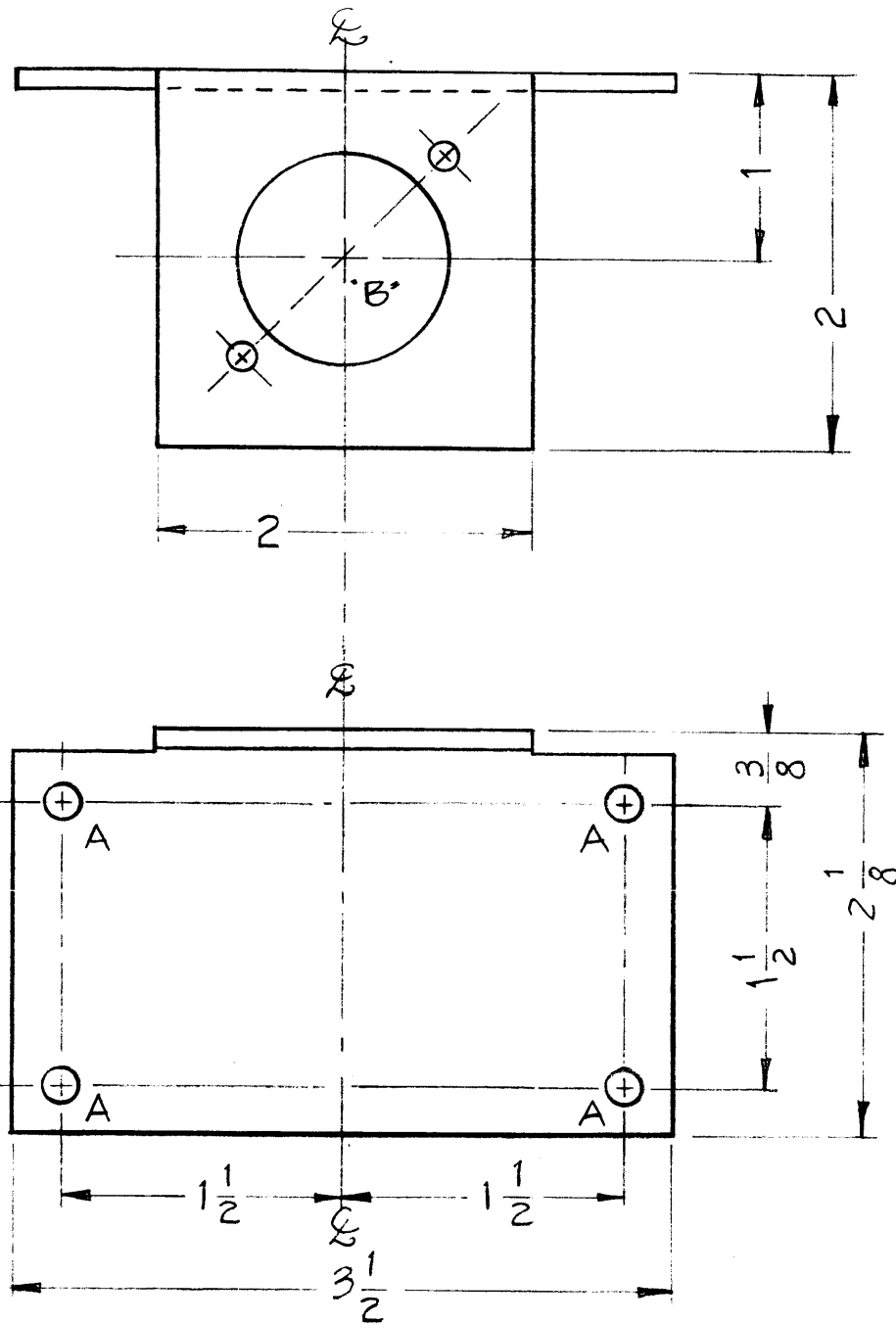
SCALE: FULL, DO NOT SCALE

MAXIMUM ALLOWABLE TOLERANCES HAVE BEEN DETERMINED AND ANY DEVIATIONS WILL BE CAUSE FOR REJECTION. REMOVE ALL BURRS AND SHARP EDGES

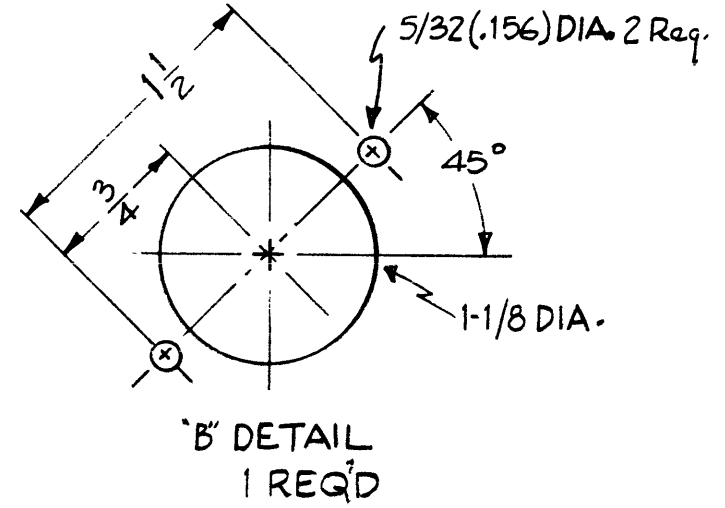


REQ. ITEM	PART NO.	DESCRIPTION	SYMBOL
	.064	THE TECHNICAL MATERIEL CORP. MAMARONECK, NEW YORK	
	ALUMINUM	BRACKET, MOUNTING SWITCH & CAPACITOR	
	5052-H32	J.C. Biele	
	5404-IRIDITE	DRAWN J.D.	CHECKED J.D.
			FINAL APPROVAL MS-2223 A

MS-2225



HOLES  
A ~ 13/64 (.203) DIA. REQ'D  
4



NOTICE TO PERSONS RECEIVING THIS DRAWING

THE TECHNICAL MATERIEL CORPORATION claims proprietary right in the material disclosed hereon. This drawing is issued in confidence for engineering information only and may not be reproduced or used to manufacture anything shown hereon without permission from THE TECHNICAL MATERIEL CORPORATION to the user. This drawing is loaned for mutual assistance and is subject to recall at any time.

Property of:  
THE TECHNICAL MATERIEL CORPORATION  
MAMARONECK, NEW YORK

ISSUE ITEM	CHANGED FROM	DATE	CH. NO.	DRAFTS	CHECKER	ENG. APP.
TOLERANCES						
SCALE:						
DEC. DIM. ±						
FRAC. DIM. ±						
ANGULAR DIM. ±						
MAXIMUM ALLOWABLE TOLERANCES HAVE BEEN DETERMINED AND ANY DEVIATIONS WILL BE CAUSE FOR REJECTION. REMOVE ALL BURRS AND SHARP EDGES						

1	GPT-40K	AX-209		4-26-60
REQ. PER UNIT	MODEL	PROJECT NO.	A S'Y. NO.	DATE
USED ON				

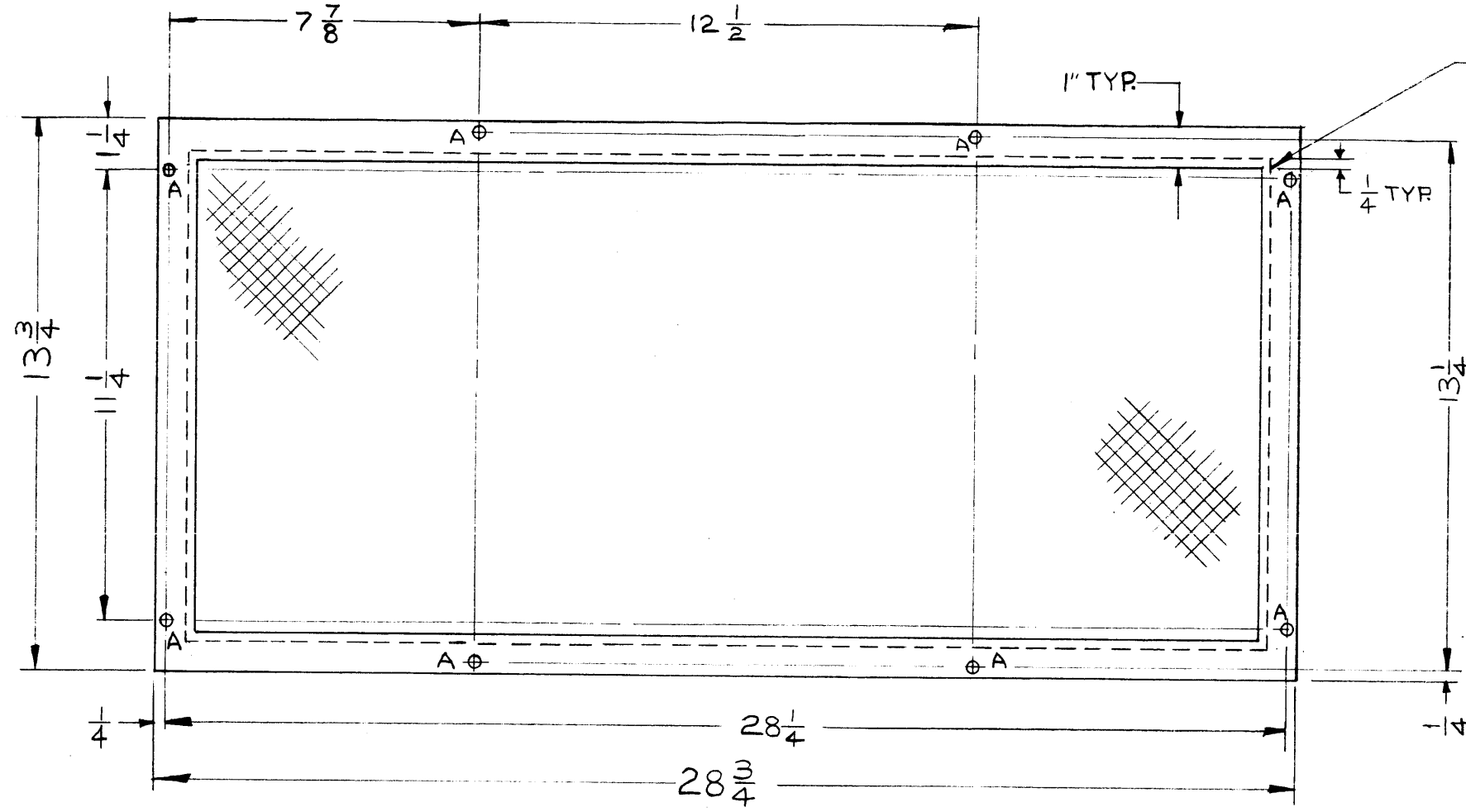
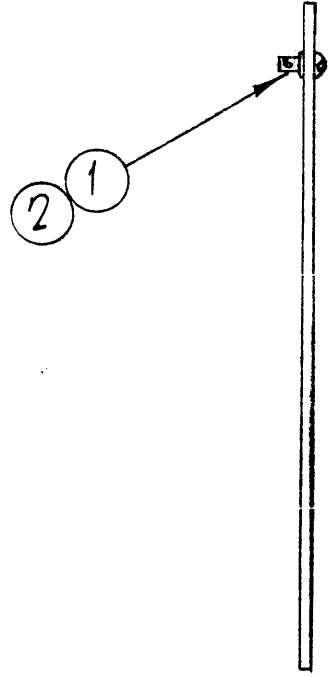
REQ. ITEM	PART NO.	DESCRIPTION	SYMBOL
.081		THE TECHNICAL MATERIEL CORP.	
STOCK SIZE		MAMARONECK, NEW YORK	
ALUMINUM		BRACKET, TUBE, METERING	
MATERIAL		CIRCUIT	
5052-H32			
TYPE & TEMPER	HEAT TREAT. SPEC.	DRAWN	CHECKED
S404	YELLOW IRIDIUM		
FINISH & SPEC. NO.	ELEC. DES. APP.	MECH. DES. APP.	MS-2225

MS-2255 C

TMC P/N	MATL	PRIME *	FINISH *
MS2255	.18 GA. STEEL MILD	5114 ZINC CHROM	5520 BLU-GY TEX.
MS2255-2	.051 ALUM. 5052-H32	5404 IRIDITE 5114 ZINC CHROM	5520 BLU-GY TEX.

\* OR PRIME & FINISH PER CUST. SPEC.

8  $\sqrt{1/4}$  (.250 DIA.) HOLES FOR FS-110-1 8 REQ.



FOR MS2255  
1/2-16-18 GA. FLATTENED  
EXPANDED METAL (STEEL)  
FOR MS2255-2  
1/2-.051 FLATTENED  
EXPANDED METAL-ALUM

NOTICE TO PERSONS RECEIVING THIS DRAWING

THE TECHNICAL MATERIEL CORPORATION claims proprietary right in the material disclosed hereon. This drawing is issued in confidence for engineering information only and may not be reproduced or used to manufacture anything shown hereon without permission from THE TECHNICAL MATERIEL CORPORATION to the user. This drawing is loaned for mutual assistance and is subject to recall at any time.

Property of:  
THE TECHNICAL MATERIEL CORPORATION  
MAMARONECK, NEW YORK

NOTE:  
HARDWARE TO BE SUPPLIED  
& ASSEMBLED BY TMC.

ISSUE	ITEM	CHANGED FROM	DATE	CH. NO.	DRAFTS	CHECKER	ENG. APP.
C		ADD. IT. 1, 2 & NOTE	3/21/66	15980	HCA		
B	1	TMC P/N CHT. ADDED	12/1/65	15297	H.V.		
A	1	CHART CLARIFIED	6/13/60	2447	CA		

TOLERANCES		SCALE:	
DEC. DIM. $\pm$		MAXIMUM ALLOWABLE TOLERANCES HAVE BEEN DETERMINED AND ANY DEVIATIONS WILL BE CAUSE FOR REJECTION.	
FRAC. DIM. $\pm$ 1/64		REMOVE ALL BURRS AND SHARP EDGES	
ANGULAR DIM. $\pm$			

2	GPT-40K			5-12-60
REQ. PER UNIT	MODEL	PROJECT NO.	ASS'Y. NO.	DATE
USED ON				

8	2	FS110-1	STUD, TURNLOCK	
8	1	FS109-3	RING, RETAINING	
REQ. ITEM	PART NO.		DESCRIPTION	SYMBOL
SEE CHART			THE TECHNICAL MATERIEL CORP.	
STOCK SIZE			MAMARONECK, NEW YORK	
SEE CHART			COVER FILTER	
MATERIAL			PERFORATED	
TYPE & TEMPER		HEAT TREAT. SPEC.	DRAWN	CHECKED
SEE CHART				
FINISH & SPEC. NO.			ELEC. DES. APP.	MECH. DES. APP.
				MS-2255 C

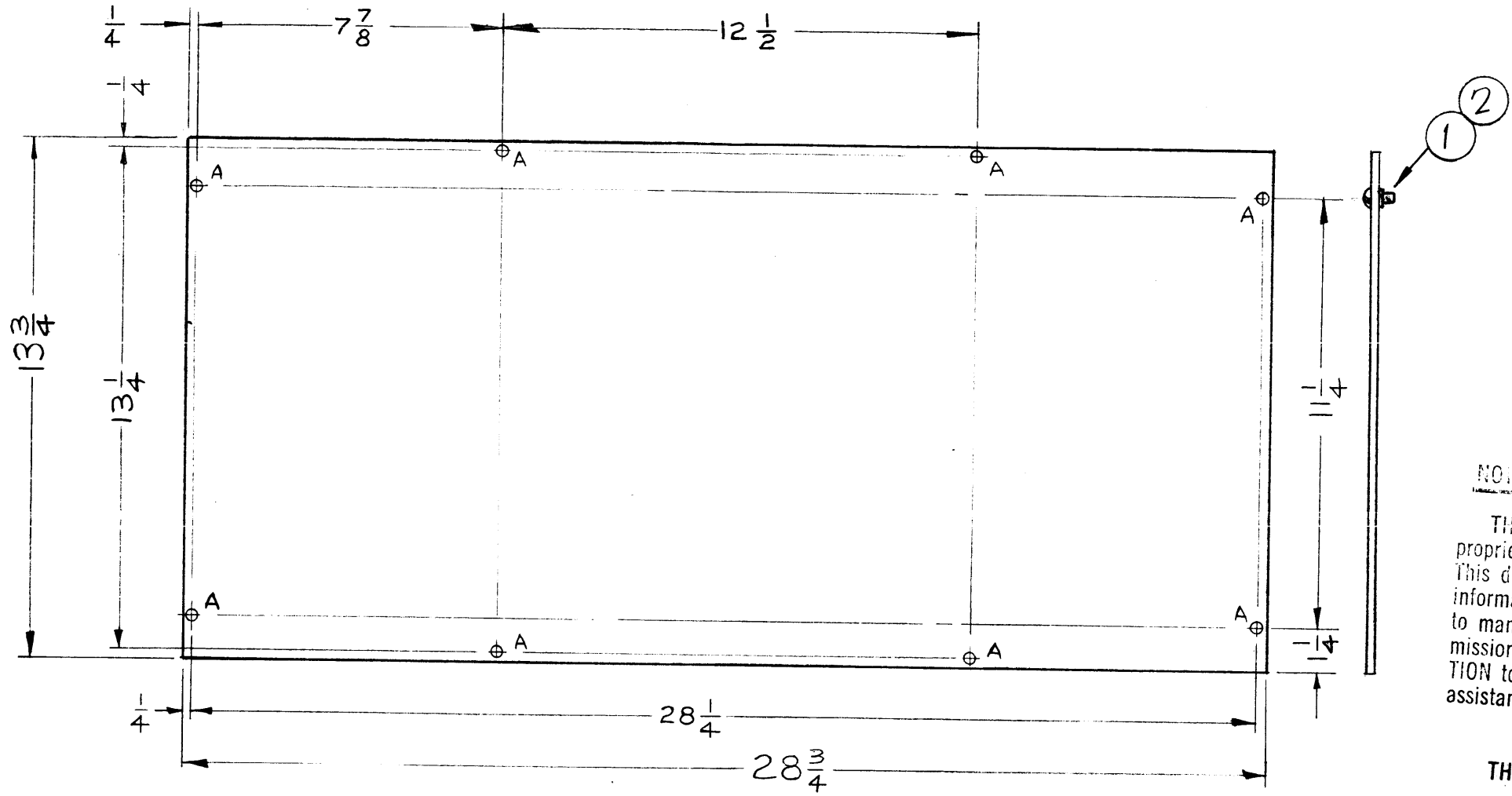


MS-2256

TMC P/N	MATERIAL	PRIME *	FINISH *
MS2256	18 GA. STEEL	S114 ZINC CHROM	S520 BLU-GY TEX
MS2256-2	.050 ALUM 5052-H32	S404 IRIDIUM S114 ZINC CHROM	S520 BLU-GY TEX

\* OR PRIME & FINISH PER CUST. SPEC.

A ✓ 1/4 (.250 DIA.) HOLES FOR FS-110-1 8 REQ.



NOTICE TO PERSONS RECEIVING THIS DRAWING  
 THE TECHNICAL MATERIEL CORPORATION claims proprietary right in the material disclosed hereon. This drawing is issued in confidence for engineering information only and may not be reproduced or used to manufacture anything shown hereon without permission from THE TECHNICAL MATERIEL CORPORATION to the user. This drawing is loaned for mutual assistance and is subject to recall at any time.

Property of:  
 THE TECHNICAL MATERIEL CORPORATION  
 MAMARONECK, NEW YORK

NOTE:  
 HARDWARE TO BE SUPPLIED & ASSEMBLED BY TMC

ISSUE	ITEM	CHANGED FROM	DATE	CH. NO.	DRAFTS	CHECKER	ENG. APP.
C		IT. 1, 2 & NOTE ADDED	3/21/66	15980	HCA	JCB	JCB
B	1	TMC CHART ADDED	12/1/65	15297	AVK	JCB	JCB
A	1	CHART CLARIFIED	6/13/60	2447	CU	JCB	JCB

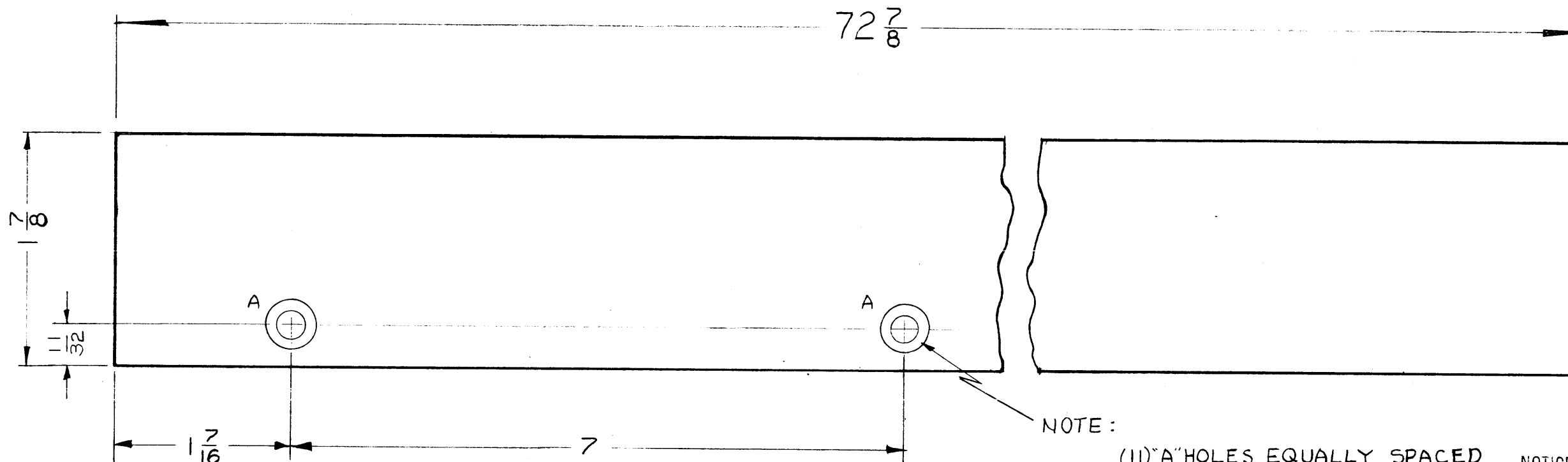
TOLERANCES SCALE: 1/4" = 1"

DEC. DIM. ±  
 FRAC. DIM. ± 1/64  
 ANGULAR DIM. ±

MAXIMUM ALLOWABLE TOLERANCES HAVE BEEN DETERMINED AND ANY DEVIATIONS WILL BE CAUSE FOR REJECTION. REMOVE ALL BURRS AND SHARP EDGES

2	GPT-10K			5/12/60
REQ. PER UNIT	MODEL	PROJECT NO.	ASSY. NO.	DATE
USED ON				

8	2	FS110-1	STUD, TURN LOCK	
8	1	FS109-3	RING, RETAINING	
REQ. ITEM	PART NO.		DESCRIPTION	SYMBOL
SEE CHART			THE TECHNICAL MATERIEL CORP.	
STOCK SIZE			MAMARONECK, NEW YORK	
SEE CHART			FILTER COVER PLATE	
MATERIAL				
TYPE & TEMPER		HEAT TREAT. SPEC.	DRAWN	CHECKED
SEE CHART			JCB	JCB
FINISH & SPEC. N		ELEC. DES. APP.	MECH. DES. APP.	
				MS-2256 C



NOTE:  
(11) "A" HOLES EQUALLY SPACED  
7" APART AS SHOWN

NOTICE TO PERSONS RECEIVING THIS DRAWING

THE TECHNICAL MATERIEL CORPORATION claims proprietary right in the material disclosed hereon. This drawing is issued in confidence for engineering information only and may not be reproduced or used to manufacture anything shown hereon without permission from THE TECHNICAL MATERIEL CORPORATION to the user. This drawing is loaned for mutual assistance and is subject to recall at any time.

Property of:  
THE TECHNICAL MATERIEL CORPORATION  
MAMARONECK, NEW YORK

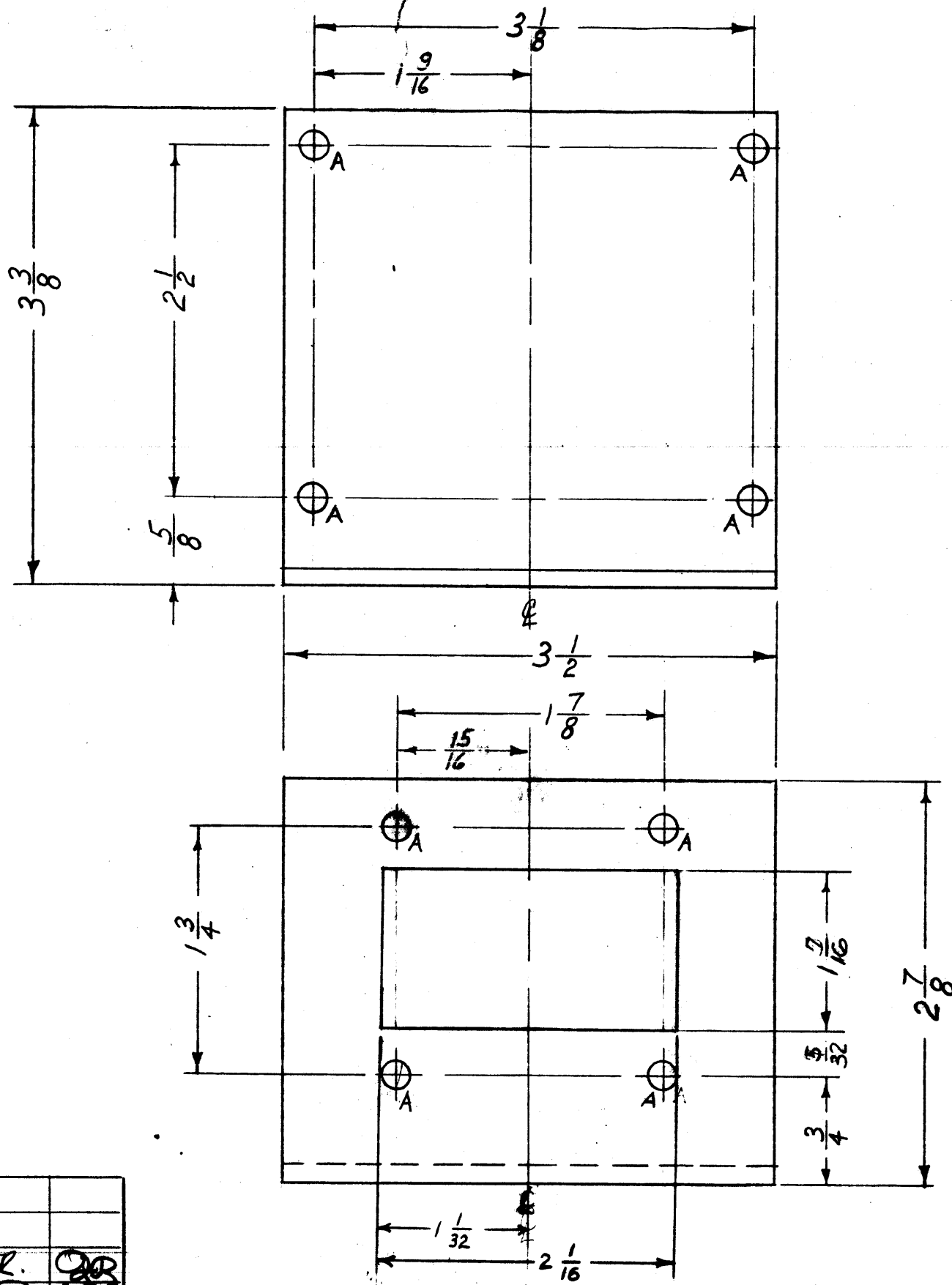
TMC PART NO.	PRIME OR DIP	FINISH
MS-2257	S114 ZINC CHROM.	S220 TMC RCAF BLUE GRAY SMOOTH ENAMEL
OR PRIME & FINISH AS PER CUSTOMER SPEC.		

DEC. DIM. $\pm$	FRAC. DIM. $\pm$	ANGULAR DIM. $\pm$	TOLERANCES				SCALE:		
MAXIMUM ALLOWABLE TOLERANCES HAVE BEEN DETERMINED AND ANY DEVIATIONS WILL BE CAUSE FOR REJECTION. REMOVE ALL BURRS AND SHARP EDGES			GPT 40K	GPT 10K	5-13-60				
REQ. PER UNIT	MODEL	PROJECT NO.	ASS'Y. NO.	DATE	USED ON				

REQ. ITEM	PART NO.	DESCRIPTION	SYMBOL
	*11 GAUGE	THE TECHNICAL MATERIEL CORP. MAMARONECK, NEW YORK	SPACER, DOOR
	STOCK SIZE		
	STEEL		
	MATERIAL		
		TYPE & TEMPER	HEAT TREAT. SPEC.
	SEE CHART		
	FINISH & SPEC. NO.	ELEC. DES. APP.	MECH. DES. APP.



B  
1291



A-13/64(.203) D.

8 REQ.

**NOTICE TO PERSONS RECEIVING THIS DRAWING**

THE TECHNICAL MATERIEL CORPORATION claims proprietary right in the material disclosed hereon. This drawing is issued in confidence for engineering information only and may not be reproduced or used to manufacture anything shown hereon without permission from THE TECHNICAL MATERIEL CORPORATION to the user. This drawing is loaned for your assistance and is subject to recall at any time.

Property of:  
THE TECHNICAL MATERIEL CORPORATION  
MAMARONECK, NEW YORK

REV	DESCRIPTION	DATE	CH. NO.	DRAFTS	CHECKER	ENG. APP.
B	1 SEE EMN #10885	2/13/64	10885	AM	TR.	<i>[Signature]</i>
A	2 1 5/16 WAS 1 1/8	12/17/63	10234	<i>[Signature]</i>	<i>[Signature]</i>	<i>[Signature]</i>
A	1 7/32 WAS 5/16					

SCALE: FULL

DEC. DIM. ±  
FRAC. DIM. ± 1/64  
ANGULAR DIM. ±

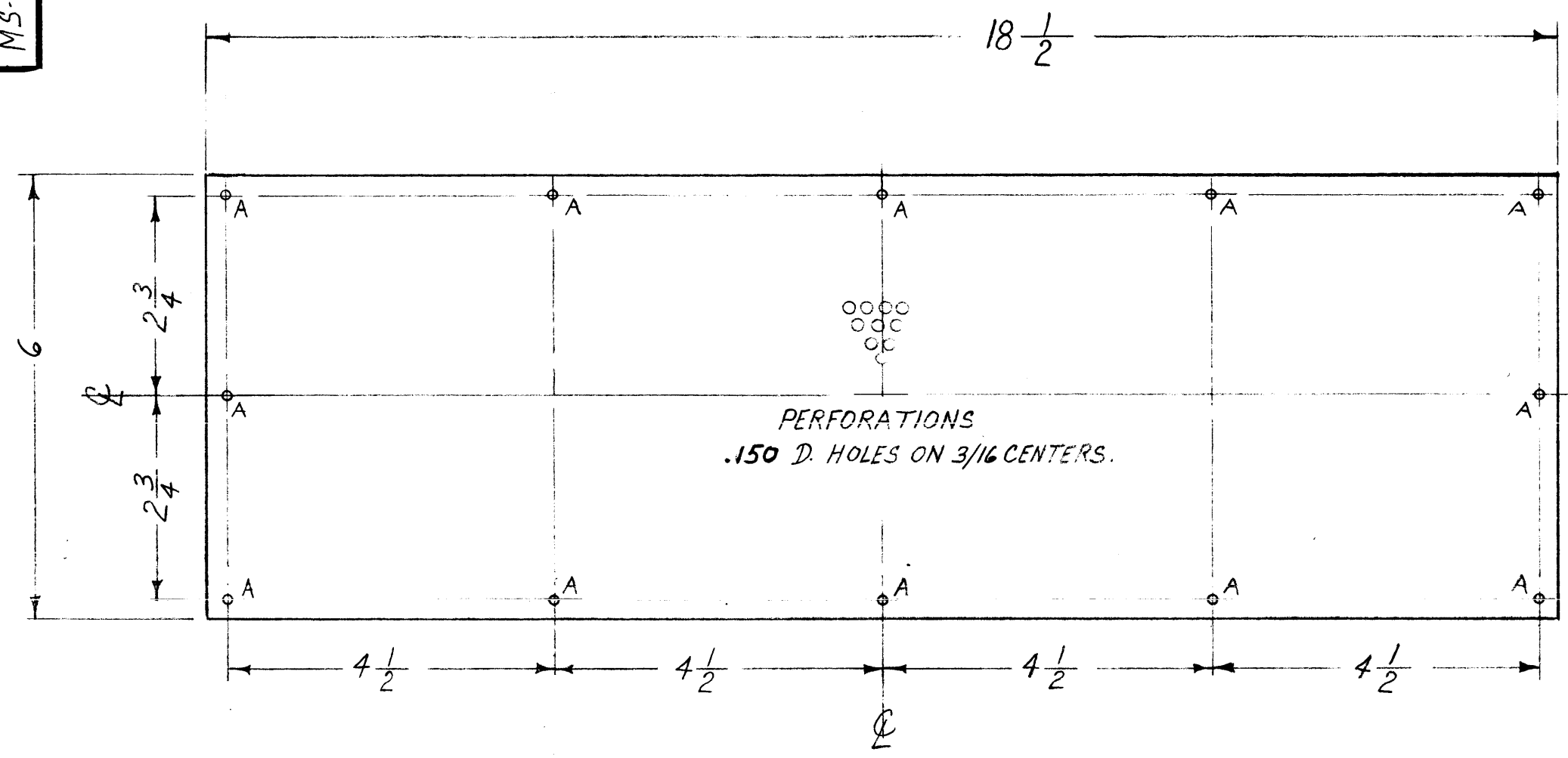
MAXIMUM ALLOWABLE TOLERANCES HAVE BEEN DETERMINED AND ANY DEVIATIONS WILL BE CAUSE FOR REJECTION.  
REMOVE ALL BURRS AND SHARP EDGES

REQ. PER UNIT	MODEL	PROJECT NO.	ASSY. NO.	DATE
1	GPT-40K	AP-103		6-6-60

USED ON

REQ. ITEM	PART NO.	DESCRIPTION	SYMBOL
1/8		THE TECHNICAL MATERIEL CORP. MAMARONECK, NEW YORK	
		BRACKET, TRANSFORMER	
ALUMINUM			
5052-H32			
		<i>[Signature]</i> <i>[Signature]</i> <i>[Signature]</i>	
		TYPE TEMPER HEAT TREAT. SPEC.	
		6404 YELL. IRIDITE	
		FINISH & SPEC. NO.	
		ELEC. DES. APP. MECH. DES. APP.	
		MS-2291	B

MS-2292  
A



A- 1/8 (.125) D.

12 REQ.

NOTE:  
TO BE RIVETED TO MS-2014 BY MFR.

NOTICE TO PERSONS RECEIVING THIS DRAWING

THE TECHNICAL MATERIEL CORPORATION claims proprietary right in the material disclosed herein. This drawing is issued in confidence for engineering information only and may not be reproduced or used to manufacture anything shown hereon without permission from THE TECHNICAL MATERIEL CORPORATION to the user. This drawing is loaned for mutual assistance and is subject to recall at any time.

Property of:  
THE TECHNICAL MATERIEL CORPORATION  
MAMARONECK, NEW YORK

REF: MS-2014 (8).

ISSUE	ITEM	CHANGED FROM	DATE	CH. NO.	DRAFTS	CHECKER	ENG. APP.
A	2	STOCK SIZE WAS .051 D	10-10-60	3057	MO	JL	AL
	1	PERFORATION HOLES WERE .072 D	10-10-60				

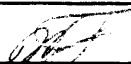


TOLERANCES  
SCALE: 1/2

DEC. DIM. ±  
FRAC. DIM. ± 1/64  
ANGULAR DIM. ±

MAXIMUM ALLOWABLE TOLERANCES HAVE BEEN DETERMINED AND ANY DEVIATIONS WILL BE CAUSE FOR REJECTION.  
REMOVE ALL BURRS AND SHARP EDGES

1	GPT-40K	AP-103	6-6-60
REQ. PER UNIT	MODEL	PROJECT NO.	ASS'Y. NO.
			DATE

USED ON

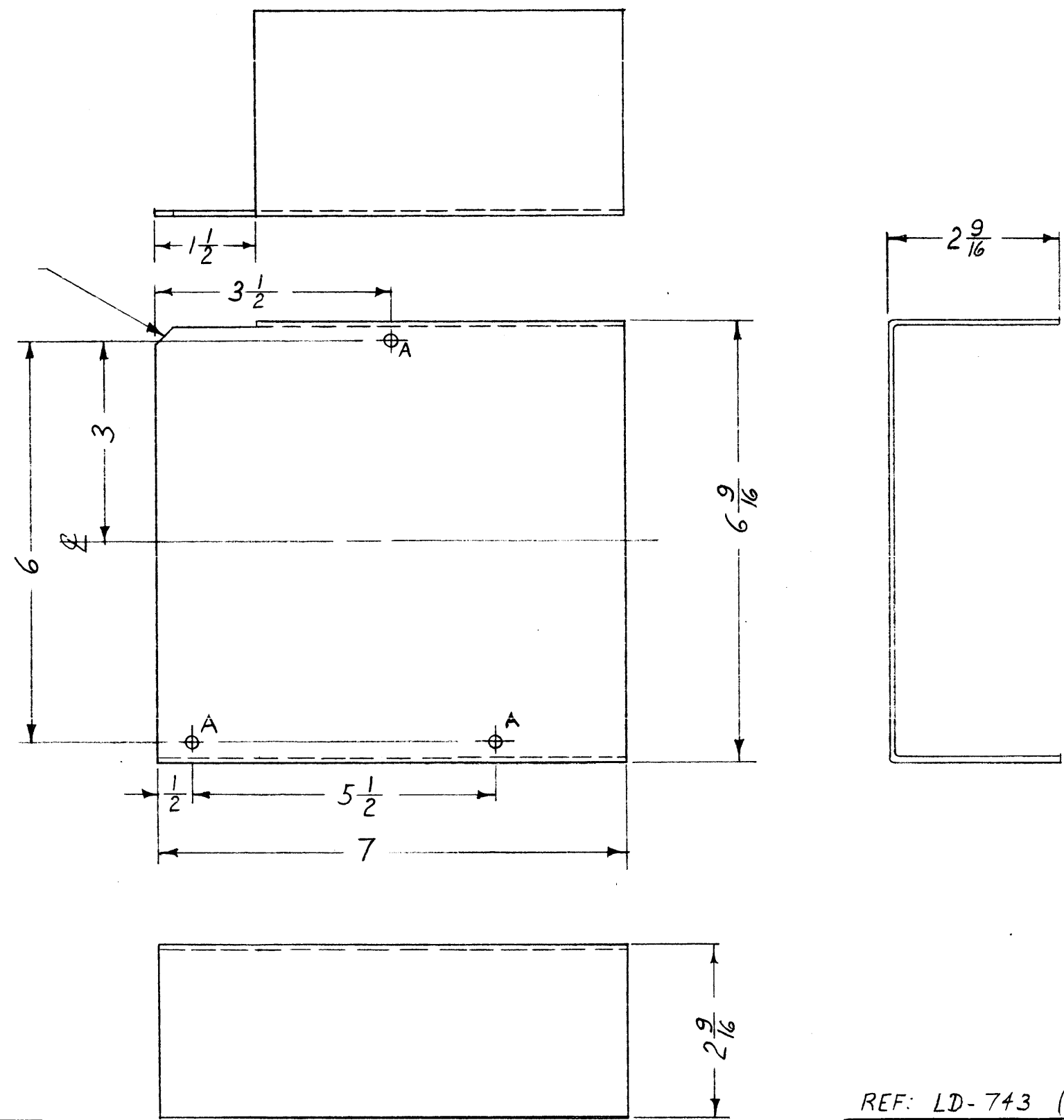
REQ. ITEM	PART NO.	DESCRIPTION	SYMBOL
	.064	THE TECHNICAL MATERIEL CORP. MAMARONECK, NEW YORK	
	PERFORATED ALUMINUM MATERIAL	SHIELD, PERFORATED ANT. TUNNER, SHIELD.	
5052-H32		  	
	S404 YELL. IRIDITE	DRAWN	CHECKED
			FINAL APPROVAL
			MS-2292
			A

MS-2295 A

A-11/64(.171)D.

3 REQ.

1/4 X 1/4 NOTCH  
1 REQ.



FINISH:  
S404 YELLOW IRIDITE  
S114 ZINC CHROMATE PRIMER  
S520 BLUE GREY TEXTURED VINYL OR  
PRIME & PAINT TO CUSTOMERS SPECS.

**NOTICE TO PERSONS RECEIVING THIS DRAWING**

THE TECHNICAL MATERIEL CORPORATION claims proprietary right in the material disclosed hereon. This drawing is issued in confidence for engineering information only and may not be reproduced or used to manufacture anything shown hereon without permission from THE TECHNICAL MATERIEL CORPORATION to the user. This drawing is loaned for your assistance and is subject to recall at any time.

Property of:  
**THE TECHNICAL MATERIEL CORPORATION**  
MAMARONECK, NEW YORK

REF: LD-743 (2)

A	1	IN FINISH S520 WASS 220	8-7-63	9654	AK	JNY	LS	
ISSUE	ITEM	CHANGED FROM	DATE	CH. NO.	DRAFTS	CHECKER	ENG. APP.	
TOLERANCES		SCALE: 1/2						
DEC. DIM. ±		MAXIMUM ALLOWABLE TOLERANCES HAVE BEEN DETERMINED AND ANY DEVIATIONS WILL BE CAUSE FOR REJECTION.						
FRAC. DIM. ± 1/64		REMOVE ALL BURRS AND SHARP EDGES						
ANGULAR DIM. ±								

1	TRL-4			6-8-60
1	TRL-3			6-8-60
REQ. PER UNIT	MODEL	PROJECT NO.	ASSY. NO.	DATE
USED ON				

REQ. ITEM	PART NO.	DESCRIPTION	SYMBOL
.064		THE TECHNICAL MATERIEL CORP. MAMARONECK, NEW YORK	
ALUMINUM		COVER, TRL	
5052-H32			
TYPE & TEMPER	HEAT TREAT. SPEC.	DRAWN	CHECKED
SEE NOTE			
FINISH & SPEC. NO.	ELEC. DES. APP.	MECH. DES. APP.	
			MS-2295
			A