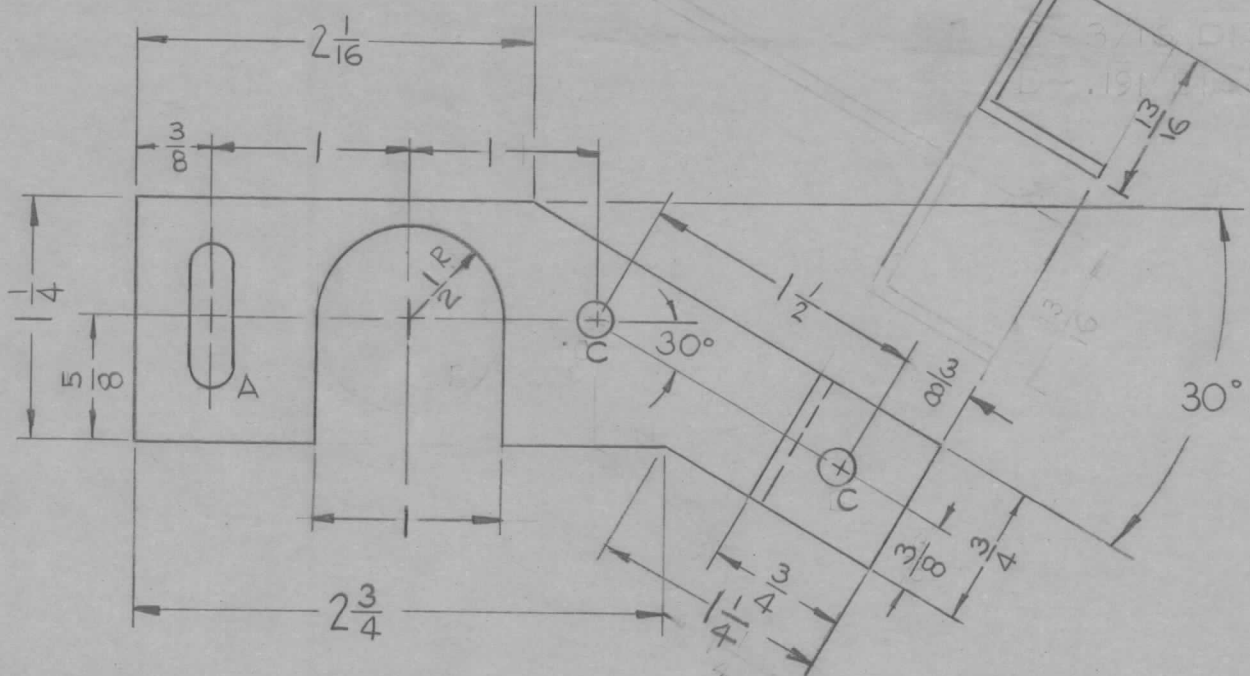


REQ. PER UNIT	USED ON			MS-2501 C
	MODEL	ASSY. NO.	DATE	
1	GPT-40KE		12-29-60	

A - 1/4 x 3/4 SLOT 1 REQ
 B -
 C - 13/64 (.203) DIA 2 REQ



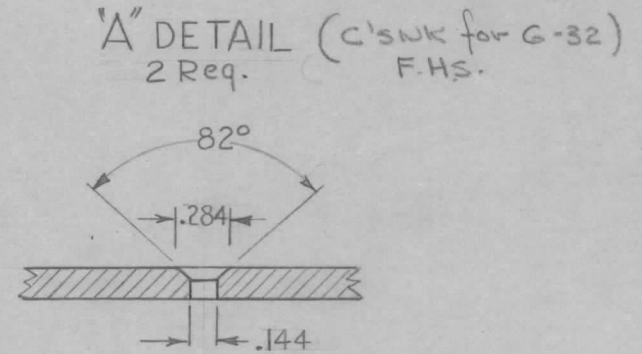
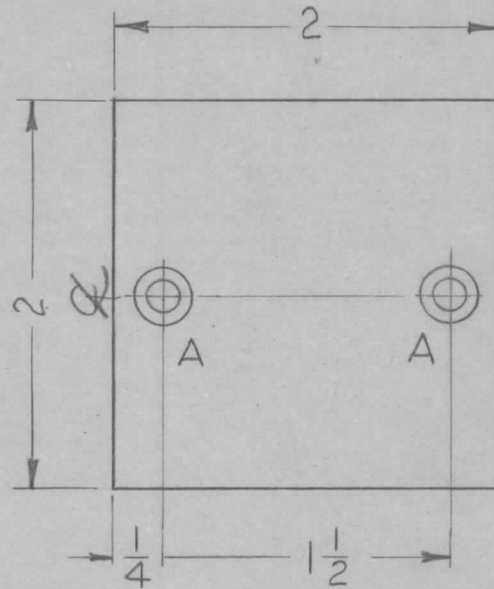
UNLESS OTHERWISE SPECIFIED
 DIMENSIONS ARE IN INCHES AND INCLUDE
 CHEMICALLY APPLIED OR PLATED FINISHES

DECIMALS	FRACTIONS
.X ± .05	± 1/64
.XX ± .01	ANGLES
.XXX ± .005	± 0° 30'

CUT HERE
 GUARANTEED
 2-66

ISSUE	ITEM	CHANGED FROM	DATE	CH. NO.	DRAFTS	CHECKER	ENG. APP.	REQ. ITEM	PART NO.	DESCRIPTION	SYMBOL			
C	2	"C" HOLE WAS .191 D. REQ WAS 1 DELETED "B" HOLE 3/16 DIA	4-26-63	8874					1/8 THK.	THE TECHNICAL MATERIEL CORP. MAMARONECK, NEW YORK BRACKET, IDLER GEAR ADJUST	MS-2501 C			
B	1	STOCK SIZE WAS .081	8-23-62	7128					STOCK SIZE					
A	1	1" Slot, 1/2 R. Was 1" Dia Hole	12-26-61	6092					ALUMINUM					
TOLERANCES			SCALE: FULL, DO NOT SCALE			5052-H32			R-UZZO	20				
DEC. DIM. ±			MAXIMUM ALLOWABLE TOLERANCES HAVE BEEN DETERMINED AND ANY DEVIATIONS WILL BE CAUSE FOR REJECTION. REMOVE ALL BURRS AND SHARP EDGES			TYPE & TEMPER			HEAT TREAT. SPEC.	DRAWN	CHECKED	FINAL APPROVAL		
FRAC. DIM. ±						IRIDITE S404							aa	
ANGULAR DIM. ±						FINISH & SPEC. NO.			ELEC. DES. APP			MECH. DES. APP		

REQ. PER UNIT	USED ON			MS-2508
	MODEL	ASS'Y. NO.	DATE	
2	RFD-1		1-12-61	



UNLESS OTHERWISE SPECIFIED
DIMENSIONS ARE IN INCHES AND INCLUDE
CHEMICALLY APPLIED OR PLATED FINISHES

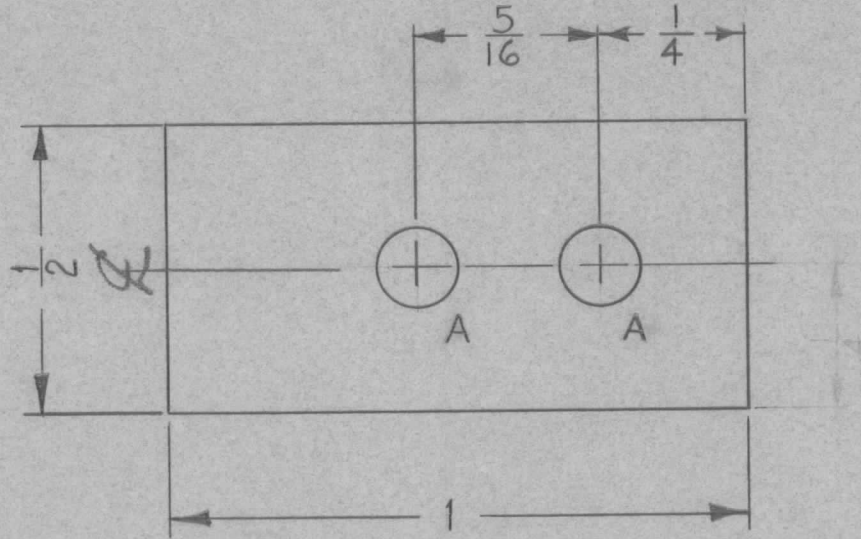
DECIMALS	TOLERANCES	FRACTIONS
.X ± .05		± 1/64
.XX ± .01		ANGLES
.XXX ± .005		± 0° 30'

CUT HERE
GUARANTEED
2-66

ISSUE	ITEM	CHANGED FROM	DATE	CH. NO.	DRAFTS	CHECKER	ENG. APP.	REQ.	ITEM	PART NO.	DESCRIPTION	SYMBOL	
										.064	THE TECHNICAL MATERIEL CORP. MAMARONECK, NEW YORK PLATE, PROTECTIVE		
										STOCK SIZE			
										ALUMINIUM			
										MATERIAL			
										5052-H32	<i>DeLuis</i> DRAWN <i>A. De</i> CHECKED <i>SPM</i> FINAL APPROVAL		
TOLERANCES			SCALE:								5404 IRIDITE	MS-2508	
DEC. DIM. ± FRAC. DIM. ± ANGULAR DIM. ±			MAXIMUM ALLOWABLE TOLERANCES HAVE BEEN DETERMINED AND ANY DEVIATIONS WILL BE CAUSE FOR REJECTION. REMOVE ALL BURRS AND SHARP EDGES								FINISH & SPEC. NO.		ELEC. DES. APP

A ~ $\frac{9}{64}$ DIA.

2 REQ.



UNLESS OTHERWISE SPECIFIED DIMENSIONS ARE IN INCHES AND INCLUDE CHEMICALLY APPLIED OR PLATED FINISHES		
DECIMALS	TOLERANCES	FRACTIONS
.X ± .05		± 1/64
.XX ± .01		ANGLES
.XXX ± .005		± 0° 30'

CUT HERE
GUARANTEED
2-66

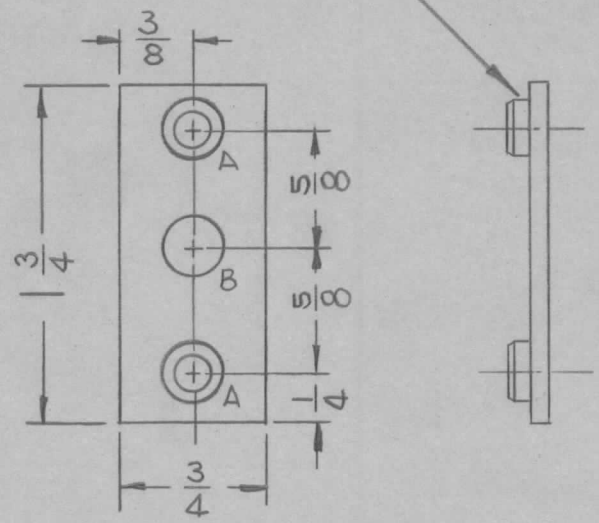
DWG No WAS SY-1031-28

1/8		REMARKS: REQ PER UNIT 2		THE TECHNICAL MATERIEL CORP. MAMARONECK, NEW YORK SYSTEMS DEPARTMENT					
STOCK SIZE				SALES ORDER NUMBER G-10873		PROPOSAL NUMBER		QR NUMBER	
PHENOLIC				TITLE: SUPPORT BLOCK, HYBRID UNIT					
MATERIAL				DRAWN BY W.A.F.		DATE 12-29-60		FINAL APPROVAL F.O.S.	
XXXP				MS-2520					
TYPE & TEMPER		HEAT TREAT. SPEC.							
NATURAL									
FINISH & SPEC NO.									

REQ. PER UNIT	USED ON		
	MODEL	ASS'Y. NO.	DATE
2	RFB-1		
2	RFC-1		
2	RFD-1		1-20-61

MS-2523

MOUNT IN ALL "A" HOLES AS SHOWN AFTER FINISH



A - 191-194 DIA. 1 Req
 B - 5/16 DIA. 2 Req

NOTICE TO PERSONS RECEIVING THIS DRAWING

THE TECHNICAL MATERIEL CORPORATION claims proprietary right in the material disclosed hereon. This drawing is issued in confidence for engineering information only and may not be reproduced or used to manufacture anything shown hereon without permission from THE TECHNICAL MATERIEL CORPORATION to the user. This drawing is loaned for mutual assistance and is subject to recall at any time.

Property of:

THE TECHNICAL MATERIEL CORPORATION
 MAMARONECK, NEW YORK

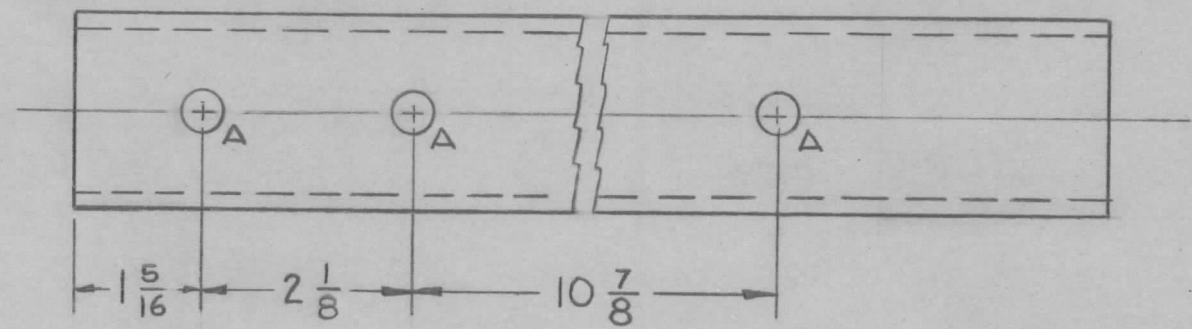
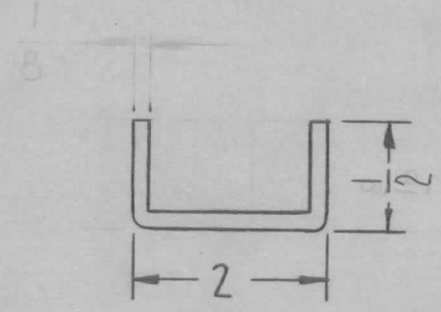
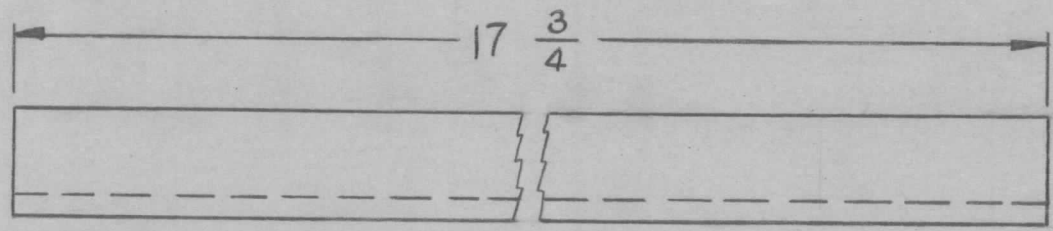
UNLESS OTHERWISE SPECIFIED DIMENSIONS ARE IN INCHES AND INCLUDE CHEMICALLY APPLIED OR PLATED FINISHES	
DECIMALS .X ± .05 .XX ± .01 .XXX ± .005	FRACTIONS ± 1/64 ANGLES ± 0° 30'
TOLERANCES	

CUT HERE GUARANTEED 2-66

REQ.	ITEM	PART NO.	DESCRIPTION	SYMBOL			
2	1	NT-129-632-4	NUT ROUND, SWAGE TYPE				
			THE TECHNICAL MATERIEL CORP.				
			MAMARONECK, NEW YORK				
			FLOAT, GEAR SHAFT				
			ALUMINUM				
			MATERIAL				
ISSUE	ITEM	CHANGED FROM	DATE	CH. NO.	DRAFTS	CHECKER	ENG. APP.
TOLERANCES		SCALE: FULL DO NOT SCALE					
DEC. DIM. ±		MAXIMUM ALLOWABLE TOLERANCES HAVE BEEN DETERMINED AND ANY DEVIATIONS WILL BE CAUSE FOR REJECTION.					
FRAC. DIM. ±		REMOVE ALL BURRS AND SHARP EDGES					
ANGULAR DIM. ±							
5052-H32		R. UZZO		J. W. E.		S. M.	
S404 YELL IRIDITE		DRAWN		CHECKED		FINAL APPROVAL	
FINISH & SPEC. NO.		ELEC. DES. APP		MECH. DES. APP		MS-2523	

REQ. PER. UNIT	USED ON			MS-2524 B
	MODEL	ASS'Y. NO.	DATE	
2	RAK-9		1-26-61	

A ~ 7/16 3 REQ.



UNLESS OTHERWISE SPECIFIED
DIMENSIONS ARE IN INCHES AND INCLUDE
CHEMICALLY APPLIED OR PLATED FINISHES

DECIMALS	FRACTIONS
.X ± .05	± 1/64
.XX ± .01	ANGLES
.XXX ± .005	± 0° 30'

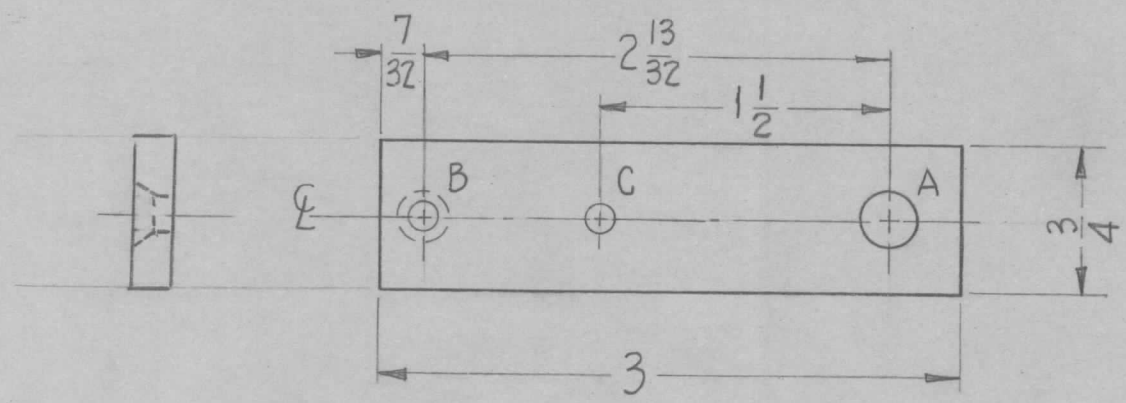
TOLERANCES

CUT HERE
GUARANTEED
2-66

REQ.	ITEM	PART NO.	DESCRIPTION				SYMBOL		
		11GA. (.1196)	THE TECHNICAL MATERIEL CORP.						
		STOCK SIZE	MAMARONECK, NEW YORK						
B	MAT'L SPECS REV.	8/3/69 19536	SUPPORT TRACK						
A	MAT'L SPECS REV.	5.11.67 18197	POWER SUPPLY						
		COLD ROLLED STEEL							
ISSUE	ITEM	CHANGED FROM	DATE	CH. NO.	DRAFTS	CHECKER	ENG. APP.		
TOLERANCES			SCALE:						
DEC. DIM. ±			MAXIMUM ALLOWABLE TOLERANCES HAVE						
FRAC. DIM. ±			BEEN DETERMINED AND ANY DEVIATIONS						
ANGULAR DIM. ±			WILL BE CAUSE FOR REJECTION.						
			REMOVE ALL BURRS AND SHARP EDGES						
TYPE & TEMPER		HEATTREAT. SPEC.		DRAWN		CHECKED		FINAL APPROVAL	
S105 CAD. PLATED				R. UZZO		[Signature]		MS-2524 B	
FINISH & SPEC. NO.				ELEC. DES. APP.		MECH. DES. APP.			

REQ. PER. UNIT	USED ON			MS-2526
	MODEL	ASS'Y. NO.	DATE	
1	TER-3500-300		2-6-61	

HOLES REQ.
 A ~ 9/32 DIA 1
 B ~ 8-32 C'SINK 1
 C ~ 9/64 DIANCE 1



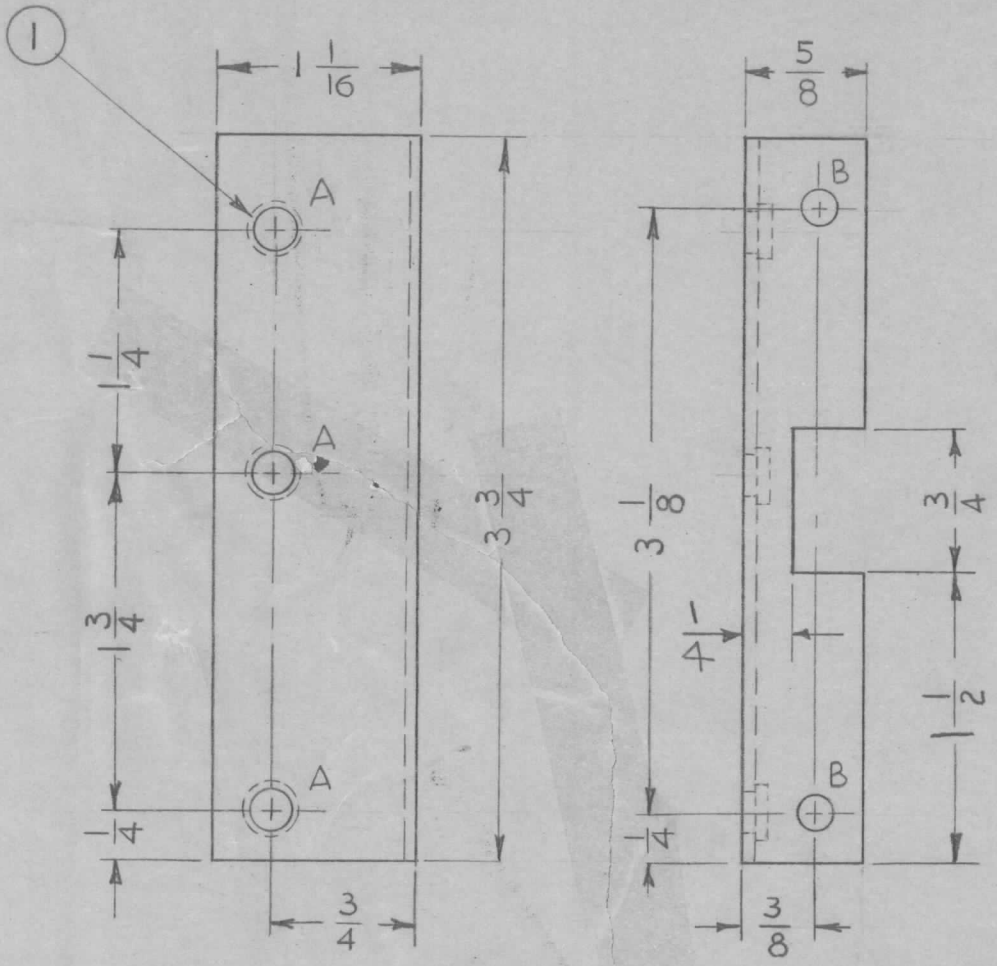
UNLESS OTHERWISE SPECIFIED
 DIMENSIONS ARE IN INCHES AND INCLUDE
 CHEMICALLY APPLIED OR PLATED FINISHES

DECIMALS	TOLERANCES	FRACTIONS
.X ± .05		± 1/64
.XX ± .01		ANGLES
.XXX ± .005		± 0° 30'

CUT HERE
 GUARANTEED
 2-66

REQ.	ITEM	PART NO.	DESCRIPTION	SYMBOL						
		.081	THE TECHNICAL MATERIEL CORP.							
		STOCK SIZE	MAMARONECK, NEW YORK							
		ALUMINUM	PLATE, MOUNTING, SPARK GAP							
		MATERIAL								
ISSUE	ITEM	CHANGED FROM	DATE	CH. NO.	DRAFTS	CHECKER	ENG. APP.	DRAWN	CHECKED	FINAL APPROVAL
TOLERANCES			SCALE:					<i>D. J. [Signature]</i>	<i>[Signature]</i>	<i>[Signature]</i>
DEC. DIM. ±			MAXIMUM ALLOWABLE TOLERANCES HAVE			TYPE & TEMPER		HEAT TREAT. SPEC.		
FRAC. DIM. ±			BEEN DETERMINED AND ANY DEVIATIONS			S-404 YELLOW				
ANGULAR DIM. ±			WILL BE CAUSE FOR REJECTION.			IRIDITE				
			REMOVE ALL BURRS AND SHARP EDGES			FINISH & SPEC. NO.		ELEC. DES. APP	MECH. DES. APP	MS-2526

REQ. PER. UNIT	USED ON			MS-2527
	MODEL	ASS'Y. NO.	DATE	
3	SBT-350		2-7-61	



HOLES -
 A - .224 DIA. 3 Req.
 .221
 B - 3/16 DIA. 2 Req.

UNLESS OTHERWISE SPECIFIED
 DIMENSIONS ARE IN INCHES AND INCLUDE
 CHEMICALLY APPLIED OR PLATED FINISHES

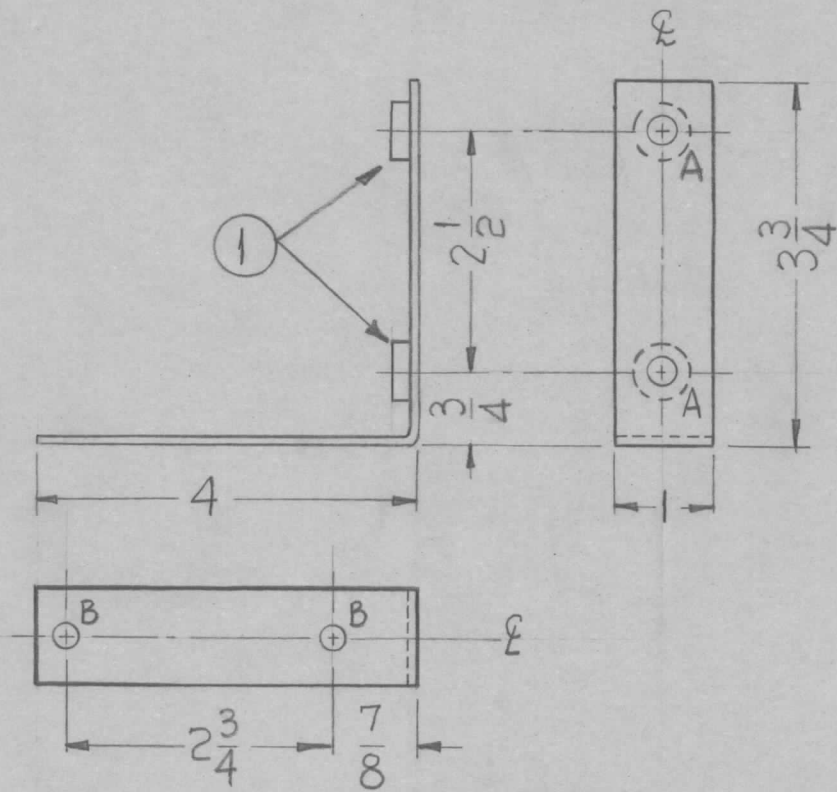
DECIMALS	TOLERANCES	FRACTIONS
.X ± .05		± 1/64
.XX ± .01		ANGLES
.XXX ± .005		± 0° 30'

CUT HERE
 GUARANTEED
 2-66

							3	1	NT-129-832-4	NUT, ROUND, SWAGE TYPE		
							REQ.	ITEM	PART NO.	DESCRIPTION	SYMBOL	
										THE TECHNICAL MATERIEL CORP.		
										MAMARONECK, NEW YORK		
										SPRING, MOTOR		
										MOUNTING BRACKET		
ISSUE	ITEM	CHANGED FROM	DATE	CH. NO.	DRAFTS	CHECKER	ENG. APP.					
TOLERANCES			SCALE:				5052-H32		DRAWN		FINAL APPROVAL	
DEC. DIM. ±			MAXIMUM ALLOWABLE TOLERANCES HAVE BEEN DETERMINED AND ANY DEVIATIONS WILL BE CAUSE FOR REJECTION. REMOVE ALL BURRS AND SHARP EDGES				TYPE & TEMPER		CHECKED		MS-2527	
FRAC. DIM. ±							S404 YELLOW IRIDITE		ELEC. DES. APP			
ANGULAR DIM. ±												

REQ. PER. UNIT	USED ON			MS-2529
	MODEL	ASSY. NO.	DATE	
2	RAK-19B		2-11-61	

HOLE
 A ~ .251-.254 DIA REQ. 2
 B ~ .203 DIA. 2



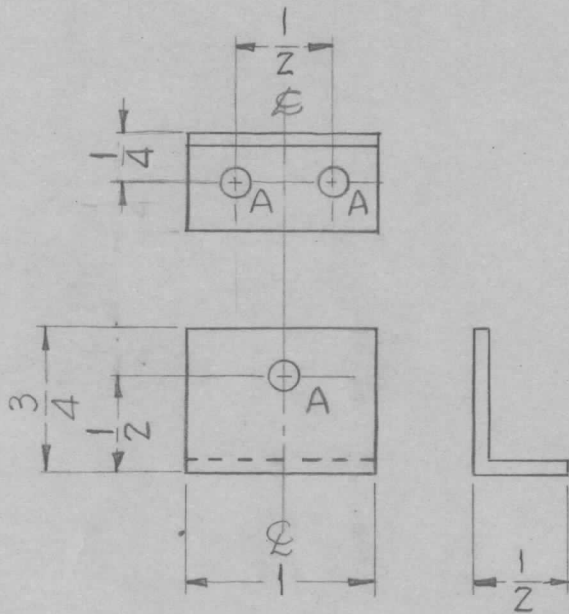
UNLESS OTHERWISE SPECIFIED
 DIMENSIONS ARE IN INCHES AND INCLUDE
 CHEMICALLY APPLIED OR PLATED FINISHES

DECIMALS	TOLERANCES	FRACTIONS
.X ± .05		± 1/64
.XX ± .01		ANGLES
.XXX ± .005		± 0° 30'

CUT HERE
 GUARANTEED
 2-66

							2	1	NT-129-1032-4	NUT, SWAGE, ROUND TYPE						
							REQ.	ITEM	PART NO.	DESCRIPTION		SYMBOL				
							1/8			THE TECHNICAL MATERIEL CORP.						
							STOCK SIZE			MAMARONECK, NEW YORK						
							ALUMINUM			MTG. BRACKET, COUPLER UNIT						
							MATERIAL									
ISSUE	ITEM	CHANGED FROM	DATE	CH. NO.	DRAFTS	CHECKER	ENG. APP.			DRAWN		CHECKED	FINAL APPROVAL			
TOLERANCES			SCALE: 1/2 SIZE						D. Mann		R. Koh					
DEC. DIM. ±			MAXIMUM ALLOWABLE TOLERANCES HAVE BEEN DETERMINED AND ANY DEVIATIONS WILL BE CAUSE FOR REJECTION. REMOVE ALL BURRS AND SHARP EDGES				TYPE & TEMPER		HEATTREAT. SPEC.		DRAWN		CHECKED			
FRAC. DIM. ±							S-404				RK					
ANGULAR DIM. ±							FINISH & SPEC. NO.				ELEC. DES. APP		MECH. DES. APP		MS-2529	

REQ. PER. UNIT	USED ON			MS-2530
	MODEL	ASS'Y. NO.	DATE	
2	AFC-1 A		2-15-61	



Holes
A ~ 9/64 DIA.

REQ.
3

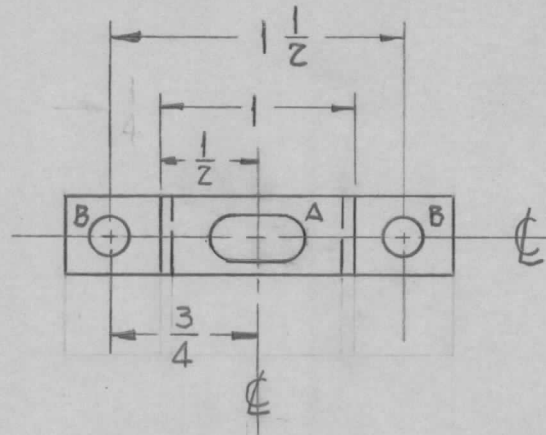
UNLESS OTHERWISE SPECIFIED
DIMENSIONS ARE IN INCHES AND INCLUDE
CHEMICALLY APPLIED OR PLATED FINISHES

DECIMALS	TOLERANCES	FRACTIONS
.X ± .05		± 1/64
.XX ± .01		ANGLES
.XXX ± .005		± 0° 30'

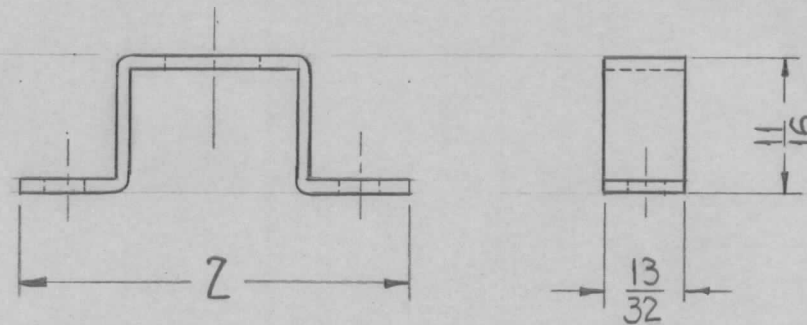
CUT HERE
GUARANTEED
2-66

								REQ.	ITEM	PART NO.	DESCRIPTION	SYMBOL					
										.064	THE TECHNICAL MATERIEL CORP. MAMARONECK, NEW YORK BRACKET, MOUNTING, RESISTOR						
										STOCK SIZE							
										ALUMINUM							
										MATERIAL							
ISSUE	ITEM	CHANGED FROM	DATE	CH. NO.	DRAFTS	CHECKER	ENG. APP.	2024-H32			<i>DR. Mann</i>	<i>PCB</i>	<i>AD</i>				
TOLERANCES			SCALE: Do Not SCALE								DRAWN	CHECKED	FINAL APPROVAL				
DEC. DIM. ±			MAXIMUM ALLOWABLE TOLERANCES HAVE BEEN DETERMINED AND ANY DEVIATIONS WILL BE CAUSE FOR REJECTION. REMOVE ALL BURRS AND SHARP EDGES														
FRAC. DIM. ±																	
ANGULAR DIM. ±																	
										5-404 YELLOW IRIDITE							
										FINISH & SPEC. NO.	ELEC. DES. APP	MECH. DES. APP		MS-2530			

REQ. PER UNIT	USED ON			MS-2532
	MODEL	ASS'Y. NO.	DATE	
	KIT-105		9-25-61	



A - $\frac{1}{4} \times \frac{1}{2}$ SLOT 1 Req.
 B - $\frac{13}{64}$ DIA. 2 Req.



UNLESS OTHERWISE SPECIFIED
 DIMENSIONS ARE IN INCHES AND INCLUDE
 CHEMICALLY APPLIED OR PLATED FINISHES

DECIMALS	FRACTIONS
.X ± .05	± 1/64
.XX ± .01	ANGLES
.XXX ± .005	± 0° 30'

TOLERANCES

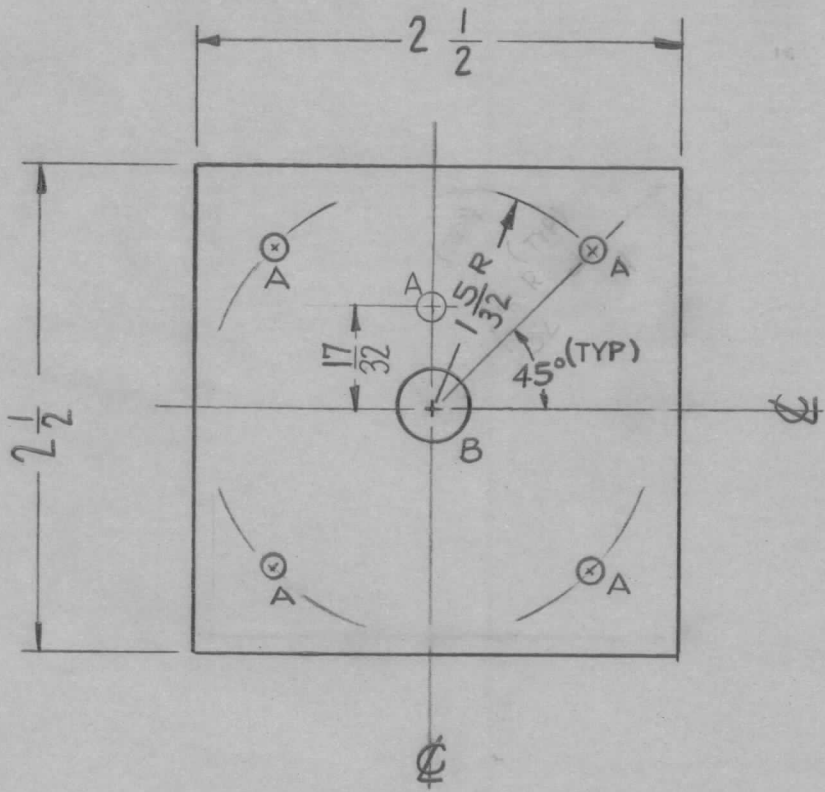
CUT HERE
 GUARANTEED
 2-66

ISSUE	ITEM	CHANGED FROM	DATE	CH. NO.	DRAFTS	CHECKER	ENG. APP.	REQ. ITEM	PART NO.	DESCRIPTION	SYMBOL	
									16 GA.	THE TECHNICAL MATERIEL CORP. MAMARONECK, NEW YORK	BRACKET, TOP HAT	
									STOCK SIZE			
									STEEL			
									MATERIAL			
									H.R.	RUZZO	<i>file</i>	<i>203</i>
									TYPE & TEMPER	CHECKED	FINAL APPROVAL	
									COPPER FLASHED	<i>AR</i>	MS-2532	
									FINISH & SPEC. NO.	ELEC. DES. APP	MECH. DES. APP	

DEC. DIM. ±
 FRAC. DIM. ±
 ANGULAR DIM. ±

SCALE:
 MAXIMUM ALLOWABLE TOLERANCES HAVE BEEN DETERMINED AND ANY DEVIATIONS WILL BE CAUSE FOR REJECTION.
 REMOVE ALL BURRS AND SHARP EDGES

REQ. PER. UNIT	USED ON			MS-2534	A
	MODEL	ASS'Y. NO.	DATE		
1	PTE-3		2-23-61		



A-5/32 DIA 5 Req.
 B-3/8 DIA. 1 Req.

UNLESS OTHERWISE SPECIFIED DIMENSIONS ARE IN INCHES AND INCLUDE CHEMICALLY APPLIED OR PLATED FINISHES		
DECIMALS	TOLERANCES	FRACTIONS
.X ± .05		± 1/64
.XX ± .01		ANGLES
.XXX ± .005		± 0° 30'

CUT HERE
 GUARANTEED
 2-66

ISSUE	ITEM	CHANGED FROM	DATE	CH. NO.	DRAFTS	CHECKER	ENG. APP.	REQ.	ITEM	PART NO.	DESCRIPTION	SYMBOL
										.081	THE TECHNICAL MATERIEL CORP. MAMARONECK, NEW YORK	PLATE MOUNTING, SWEEP POTENTIOMETER
										ALUMINUM		
										MATERIAL		
										5052-H32	R:UZZO	OK-J
										TYPE & TEMPER	CHECKED	
										HEATTREAT. SPEC.		
										YELLOW IRIDITE		
										FINISH & SPEC. NO.	ELEC. DES. APP	MECH. DES. APP
												MS-2534
												A

A

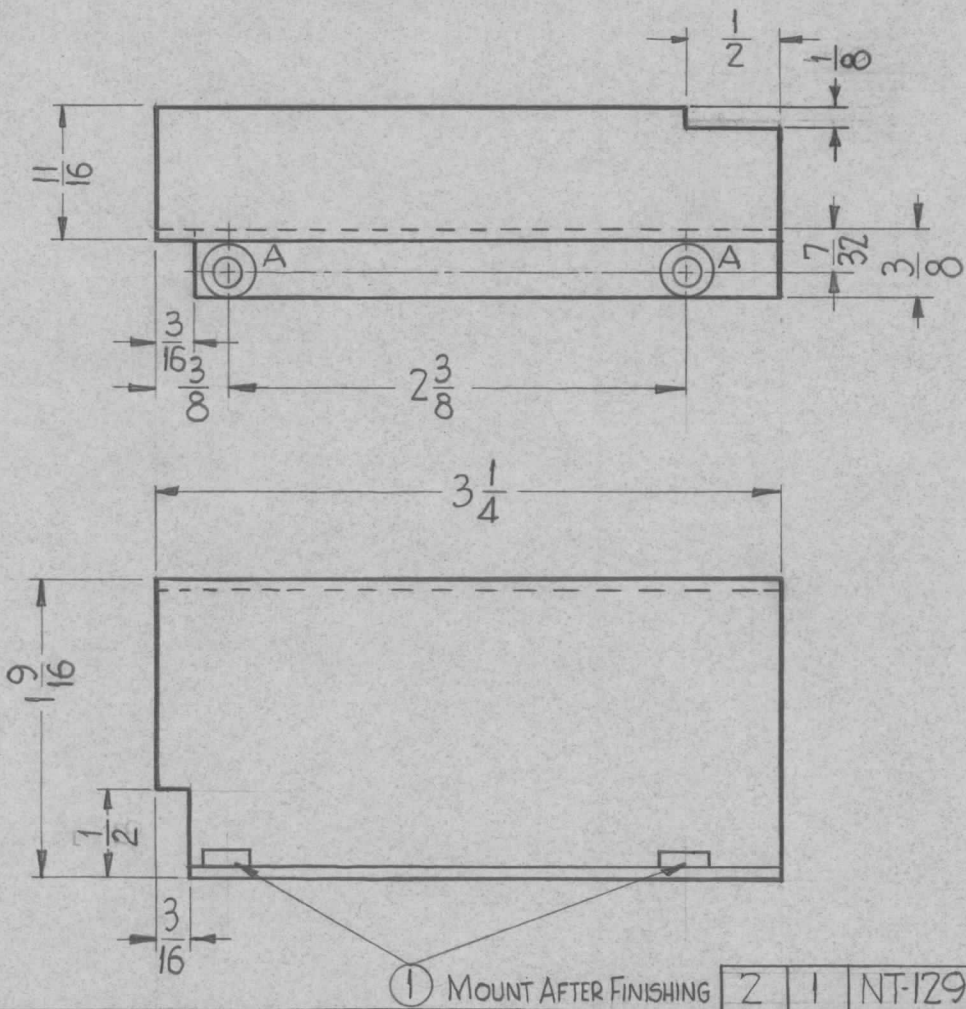
2 "A" HOLES WERE 9/64
 1 ONE "A" HOLE ADDED

5/24/61 4939 DDM JCS CRJ

TOLERANCES
 DEC. DIM. ±
 FRAC. DIM. ±
 ANGULAR DIM. ±

SCALE:
 MAXIMUM ALLOWABLE TOLERANCES HAVE
 BEEN DETERMINED AND ANY DEVIATIONS
 WILL BE CAUSE FOR REJECTION.
 REMOVE ALL BURRS AND SHARP EDGES

REQ. PER. UNIT	USED ON			MS-2538
	MODEL	ASS'Y. NO.	DATE	
1	CHG-2	OSC-OVEN	3-14-61	



HOLES
 A ~ .161-.164 DIA.
 (FOR INT 129-440-4)
 REQ. 2

NOTE
 USE MATERIAL THICKNESS
 FOR MAX. RADIUS ON ALL BENDS.

UNLESS OTHERWISE SPECIFIED DIMENSIONS ARE IN INCHES AND INCLUDE CHEMICALLY APPLIED OR PLATED FINISHES		
DECIMALS	TOLERANCES	FRACTIONS
.X ± .05		± 1/64
.XX ± .01		ANGLES ± 0° 30'
.XXX ± .005		

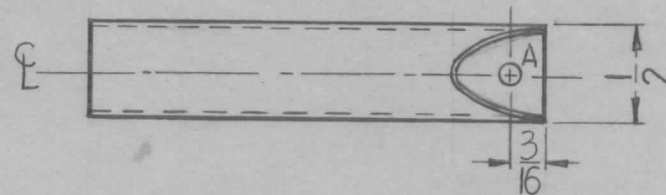
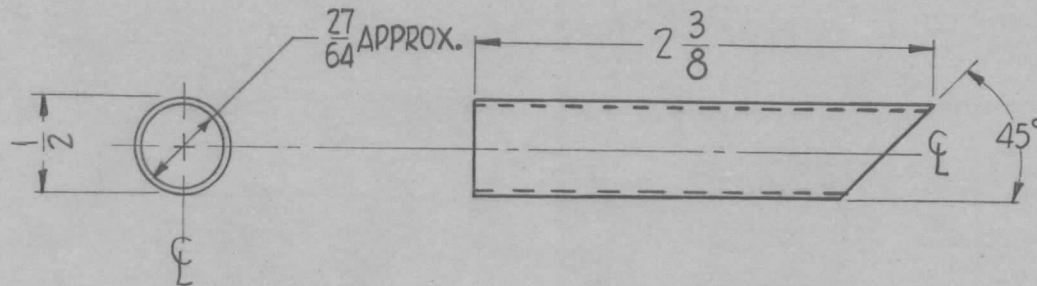
CUT HERE
 GUARANTEED
 2-66

① MOUNT AFTER FINISHING							2	1	NT-129-440-4	NUT, ROUND, SWAGE TYPE					
ISSUE	ITEM	CHANGED FROM	DATE	CH. NO.	DRAFTS	CHECKER	ENG. APP.	REQ.	ITEM	PART NO.	DESCRIPTION	SYMBOL			
									.051		THE TECHNICAL MATERIEL CORP.				
									STOCK SIZE		MAMARONECK, NEW YORK				
									ALUMINUM		X'TAL SHIELD				
									MATERIAL						
TOLERANCES			SCALE: DO NOT SCALE				505Z-H3Z	//	D.J. Mann						
DEC. DIM. ±			MAXIMUM ALLOWABLE TOLERANCES HAVE BEEN DETERMINED AND ANY DEVIATIONS WILL BE CAUSE FOR REJECTION. REMOVE ALL BURRS AND SHARP EDGES				TYPE & TEMPER		HEAT TREAT. SPEC.		DRAWN	CHECKED	FINAL APPROVAL		
FRAC. DIM. ± 1/64							5404 YELLOW IRIDITE								
ANGULAR DIM. ±							FINISH & SPEC. NO.		ELEC. DES. APP		MECH. DES. APP		MS-2538		

REQ. PER. UNIT	USED ON			MS-2539
	MODEL	ASS'Y. NO.	DATE	
1	CHG-1	OSC-OVEN	3-13-61	

HOLES
A - 1/8 DIA.

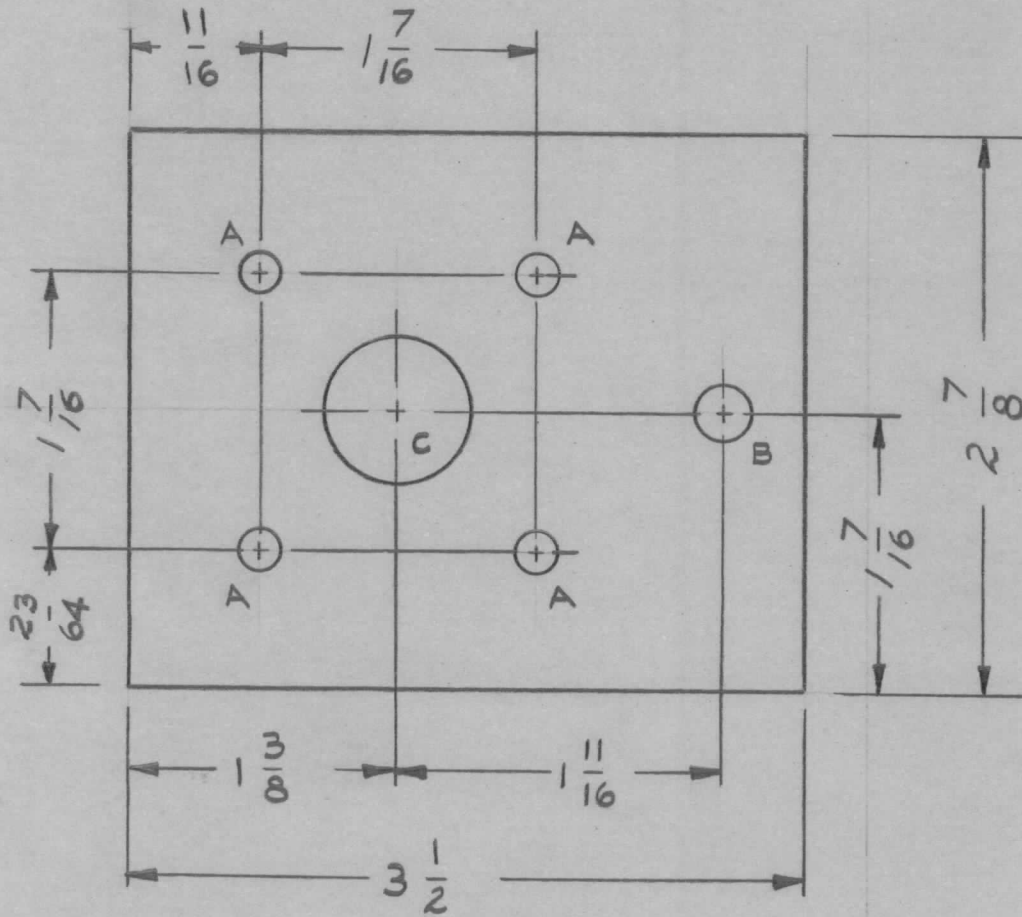
REQ.
1



REQ.	ITEM	PART NO.	DESCRIPTION				SYMBOL
		1/2	THE TECHNICAL MATERIEL CORP.				
		STOCK SIZE	MAMARONECK, NEW YORK				
		ALUMINUM TUBING	THERMOSTAT-MOUNTING JACKET				
		MATERIAL	OSC-OVEN				
ISSUE	ITEM	CHANGED FROM	DATE	CH. NO.	DRAFTS	CHECKER	ENG. APP.
TOLERANCES			SCALE: Do Not Scale				
DEC. DIM. ±			MAXIMUM ALLOWABLE TOLERANCES HAVE BEEN DETERMINED AND ANY DEVIATIONS WILL BE CAUSE FOR REJECTION. REMOVE ALL BURRS AND SHARP EDGES				
FRAC. DIM. ± 1/64							
ANGULAR DIM. ± 1/2°							
5052-H32			DRAWN		CHECKED		FINAL APPROVAL
5404 YELLOW IRIDITE							MS-2539
FINISH & SPEC. NO.		ELEC. DES. APP		MECH. DES. APP			

REQ. PER. UNIT	USED ON		
	MODEL	ASS'Y. NO.	DATE
1	TER-3500(70)		3-17-61

MS-2542



NOTE:

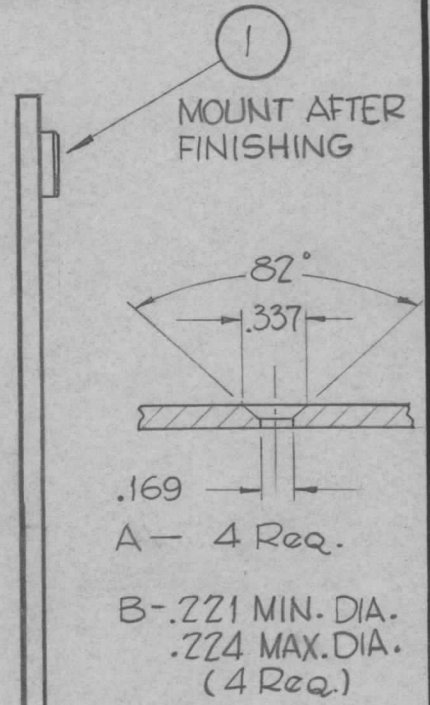
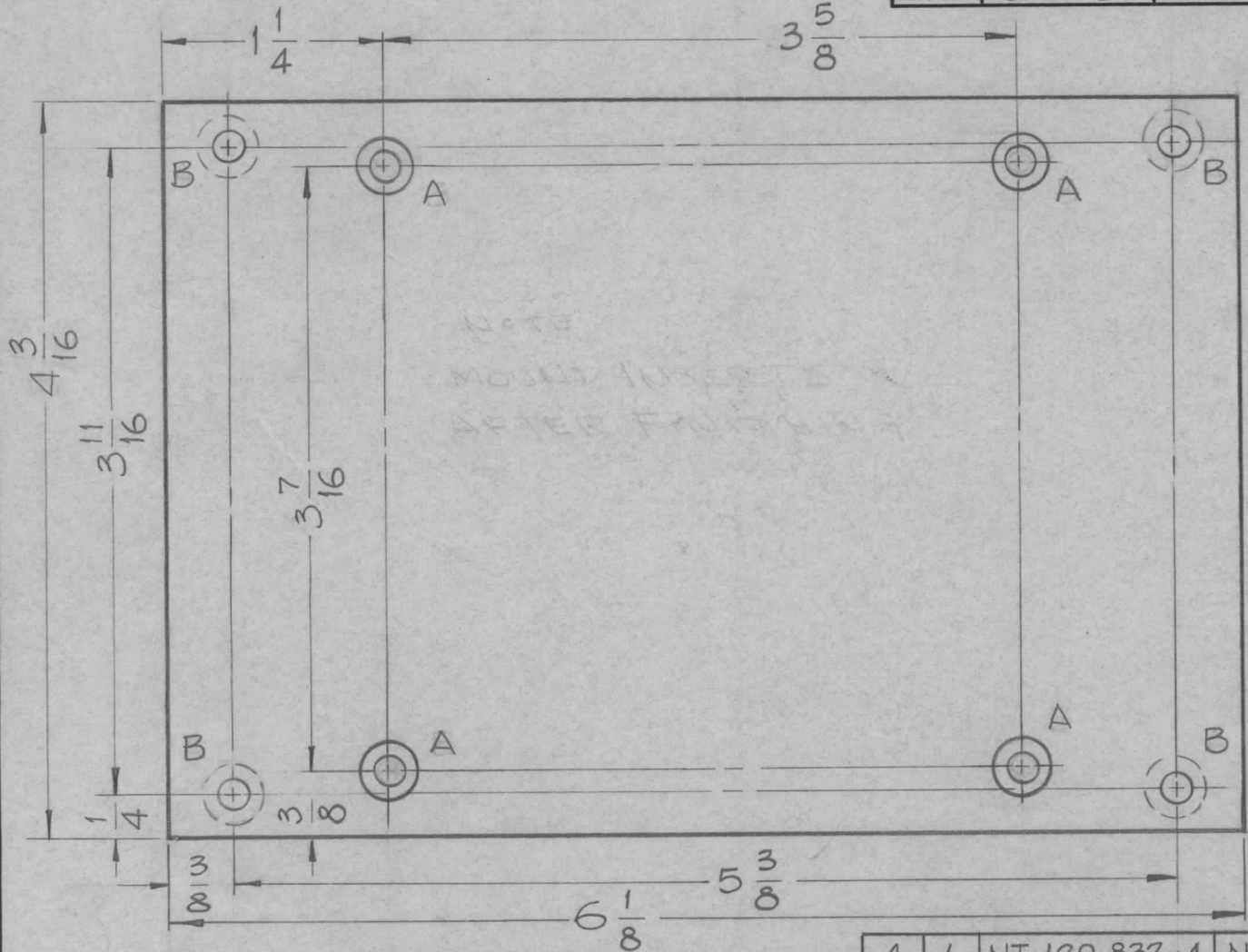
TO MODIFY TER-3500(70)
FOR USE WITH QDS
RECEPTACLE (JJ-161 IN
LIEU OF QDL RECEPTACLE
JJ-137)

HOLES	REQ'D
A ~ 13/64 DIA. DRILL THRU	4
B ~ 9/32 DIA. DRILL THRU	1
C ~ 3/4 DIA. DRILL THRU	1

DIMENSIONS ARE IN INCHES

REQ.	ITEM	PART NO.	DESCRIPTION		SYMBOL							
		.081	THE TECHNICAL MATERIEL CORP.									
		STOCK SIZE	MAMARONECK, NEW YORK									
		ALUMINUM	CONNECTOR ADAPTER PLATE									
		MATERIAL	P/O SYM - 1023									
ISSUE	ITEM	CHANGED FROM	DATE	CH. NO.	DRAFTS	CHECKER	ENG. APP.					
TOLERANCES			SCALE: FULL			5052-H32		<i>R.d.l.</i>	<i>Joe</i>	<i>FOS</i>		
DEC. DIM. ±.005			MAXIMUM ALLOWABLE TOLERANCES HAVE BEEN DETERMINED AND ANY DEVIATIONS WILL BE CAUSE FOR REJECTION. REMOVE ALL BURRS AND SHARP EDGES			TYPE & TEMPER		HEATTREAT. SPEC.		DRAWN	CHECKED	FINAL APPROVAL
FRAC. DIM. ± 1/64						5404 YELLOW IRIDITE						
ANGULAR DIM. ± 1/2°						FINISH & SPEC. NO.		ELEC. DES. APP	MECH. DES. APP			MS-2542

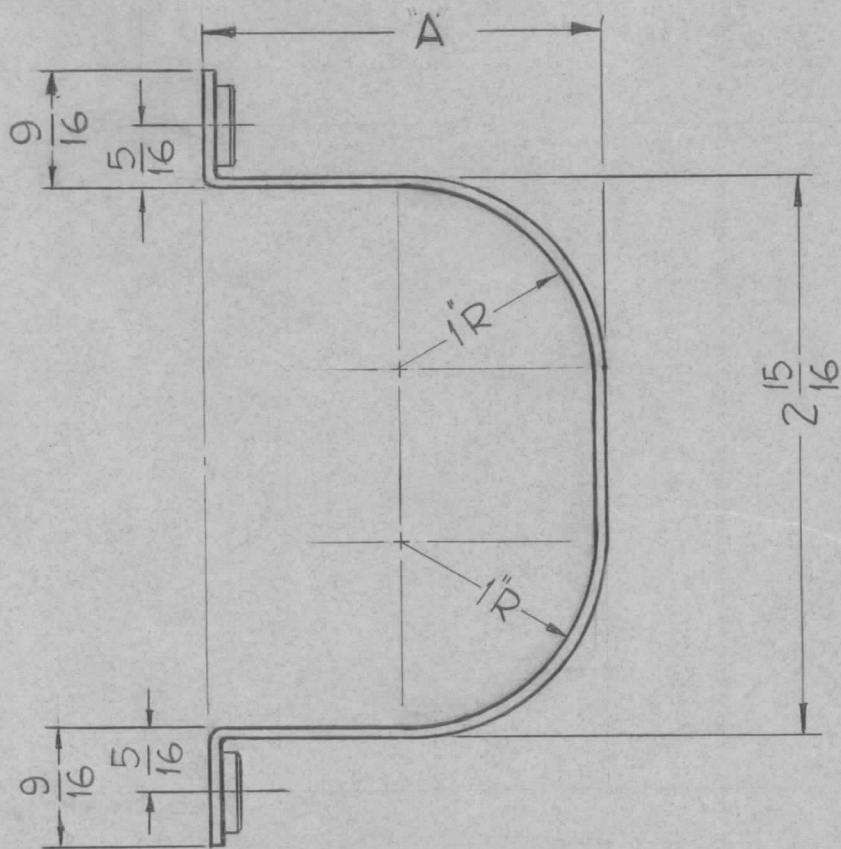
REQ. PER UNIT	USED ON			MS-2543
	MODEL	ASS'Y. NO.	DATE	
1	CPP-5		2-27-61	



4	1	NT-129-832-4	NUT, ROUND, SWAGE TYPE				
REQ.	ITEM	PART NO.	DESCRIPTION	SYMBOL			
		1/8	THE TECHNICAL MATERIEL CORP.				
		STOCK SIZE	MAMARONECK, NEW YORK				
		ALUMINUM	PLATE, CAPACITOR MTG.				
		MATERIAL					
ISSUE	ITEM	CHANGED FROM	DATE	CH. NO.	DRAFTS	CHECKER	ENG. APP.
TOLERANCES			SCALE: FULL, DO NOT SCALE				
DEC. DIM. ±			MAXIMUM ALLOWABLE TOLERANCES HAVE BEEN DETERMINED AND ANY DEVIATIONS WILL BE CAUSE FOR REJECTION: REMOVE ALL BURRS AND SHARP EDGES				
FRAC. DIM. ± 1/64							
ANGULAR DIM. ±							
5052-H32		HEAT TREAT. SPEC.	J.C. Biela	Checked	FINAL APPROVAL		
5404-Yellow Iridite		FINISH & SPEC. NO.			MS-2543		
ELEC. DES. APP			MECH. DES. APP				

TMC PART No.	DIMENSION
MS2544-1	A
MS2544-2	2 1/16
	1 9/16

REQ. PER UNIT	USED ON			MS2544-	A
	MODEL	ASS'Y. NO.	DATE		
2	CPP-5		3-28-61		



1 MOUNT INSERTS AFTER FINISHING

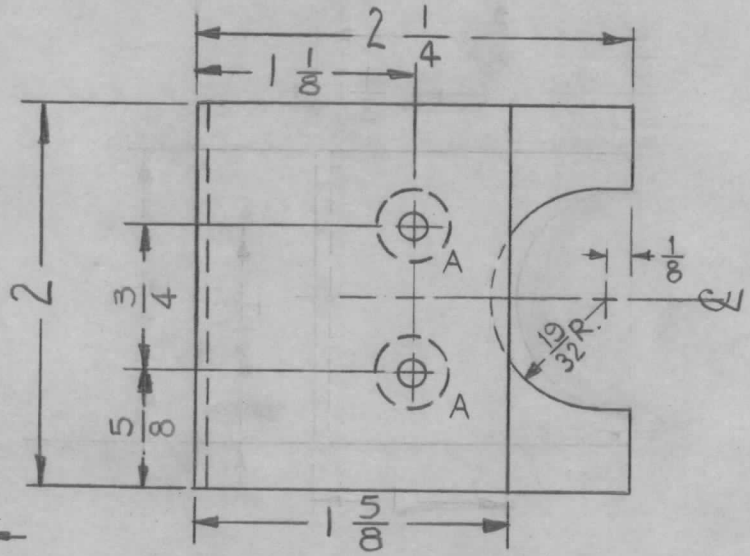
HOLES:
 A-.221 MIN. DIA. — 2 Req.
 .224 MAX. DIA.

NOTE: USE MATERIAL THICKNESS FOR MAX. RADIUS ON ALL BENDS UNLESS OTHERWISE SPECIFIED

2	1	NT-179-832-4	NUT, ROUND, SWAGE TYPE		
REQ.	ITEM	PART NO.	DESCRIPTION		SYMBOL
		.064	THE TECHNICAL MATERIEL CORP.		
		STOCK SIZE	MAMARONECK, NEW YORK		
		ALUMINUM	BRACKET, CAPACITOR MTG.		
		MATERIAL			
		5052-H-32	J.C. Biele	<i>[Signature]</i>	<i>[Signature]</i>
		TYPE & TEMPER	DRAWN	CHECKED	FINAL APPROVAL
		S404 - Yellow Iridite		<i>[Signature]</i>	MS2544- A
		FINISH & SPEC. NO.	ELEC. DES. APP.	MECH. DES. APP.	

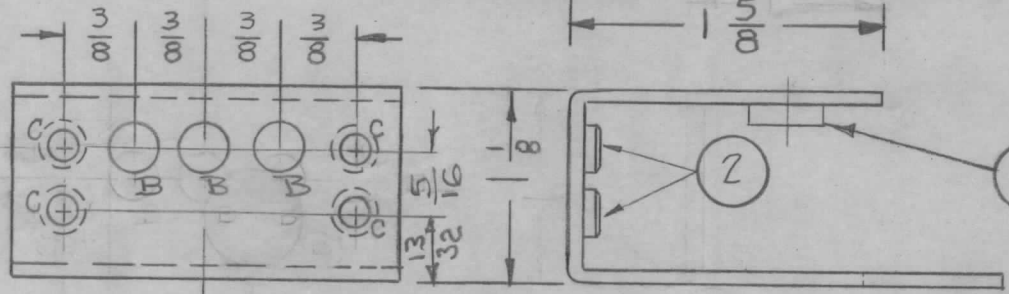
ISSUE	ITEM	CHANGED FROM	DATE	CH. NO.	DRAFTS	CHECKER	ENG. APP.
A		DIM "A" WAS 2 1/16 - TMC MS2544-2 ADDED	5-22-67	18241	G.D.L.	<i>[Signature]</i>	R.H.J.
TOLERANCES			SCALE: FULL, Do Not SCALE				
DEC. DIM. ±			MAXIMUM ALLOWABLE TOLERANCES HAVE BEEN DETERMINED AND ANY DEVIATIONS WILL BE CAUSE FOR REJECTION.				
FRAC. DIM. ± 1/64			REMOVE ALL BURRS AND SHARP EDGES				
ANGULAR DIM. ±							

REQ. PER UNIT	USED ON			MS-2550
	MODEL	ASS'Y. NO.	DATE	
1	ACU		4-15-61	



A ~ .221 - .224 DIA. 2 REQ.
 B ~ 1/4 DIA. 3 REQ.
 C ~ .161 MIN., .164 MAX. DIA'S. 4 REQ.

USE MATERIAL THICKNESS FOR MAX. RADIUS ON ALL BENDS UNLESS OTHERWISE SPECIFIED



MOUNT ITEM 1 IN ALL "A" HOLES AS SHOWN AFTER FINISHING

MOUNT ITEM 2 IN ALL C HOLES AS SHOWN AFTER FINISHING

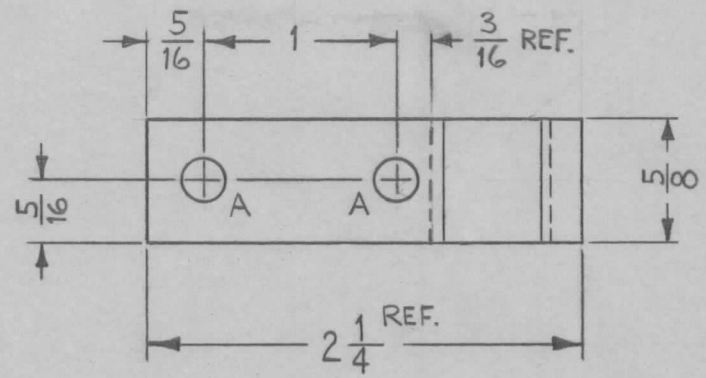
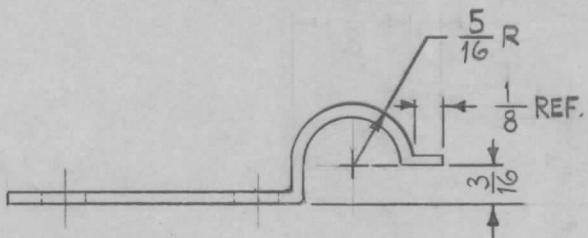
REF - TMC DWG. NO. LD-910

4	Z	NT-129-440-4	NUT, ROUND, SWAGE TYPE	
2	1	NT-129-832-4	NUT, ROUND, SWAGE TYPE	
REQ. ITEM	PART NO.		DESCRIPTION	SYMBOL
.081			THE TECHNICAL MATERIEL CORP.	
STOCK SIZE			MAMARONECK, NEW YORK	
ALUMINUM			BRACKET, THERMOSTAT SUPPORT	
MATERIAL				
5052-H32			WAF	Jude
TYPE & TEMPER		HEATTREAT. SPEC.	DRAWN	CHECKED
S404 YELL IRIDITE			aa	2B
FINISH & SPEC. NO.		ELEC. DES. APP	MECH. DES. APP	MS-2550

ISSUE	ITEM	CHANGED FROM	DATE	CH. NO.	DRAFTS	CHECKER	ENG. APP.
TOLERANCES			SCALE: FULL (DO NOT SCALE)				
DEC. DIM. ±			MAXIMUM ALLOWABLE TOLERANCES HAVE BEEN DETERMINED AND ANY DEVIATIONS WILL BE CAUSE FOR REJECTION.				
FRAC. DIM. ± 1/64			REMOVE ALL BURRS AND SHARP EDGES				
ANGULAR DIM. ±							

REQ. PER. UNIT	USED ON			MS-2552
	MODEL	ASSY. NO.	DATE	
1	ACU		4-18-61	

A ~ $\frac{7}{32}$ DIA. 2 REQ.

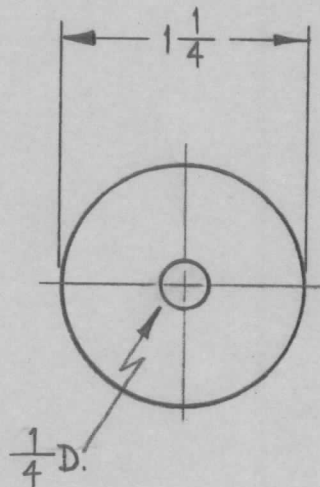


NOTE: (HEAT TREATMENT).
600° F FOR 2 HOURS IN CLOSED OVEN AFTER BENDING & MACHINING.

USE MATERIAL THICKNESS FOR MAX. RADIUS ON ALL BENDS UNLESS OTHERWISE SPECIFIED.

								REQ. ITEM	PART NO.	DESCRIPTION	SYMBOL		
								.051		THE TECHNICAL MATERIEL CORP.			
								STOCK SIZE		MAMARONECK, NEW YORK			
								BERYLLIUM COPPER		CONTACT, WIPER			
								MATERIAL					
ISSUE	ITEM	CHANGED FROM	DATE	CH. NO.	DRAFTS	CHECKER	ENG. APP.	$\frac{1}{2}$ H	SEE NOTE	MAF	JH	203	
TOLERANCES			SCALE: FULL (DO NOT SCALE)					TYPE & TEMPER	HEAT TREAT. SPEC.	DRAWN	CHECKED	FINAL APPROVAL	
DEC. DIM. ±			MAXIMUM ALLOWABLE TOLERANCES HAVE BEEN DETERMINED AND ANY DEVIATIONS WILL BE CAUSE FOR REJECTION. REMOVE ALL BURRS AND SHARP EDGES					.000025 RHODIUM PLATE			aa	MS-2552	
FRAC. DIM. ± $\frac{1}{64}$								FINISH & SPEC. NO.		ELEC. DES. APP	MECH. DES. APP		
ANGULAR DIM. ±													

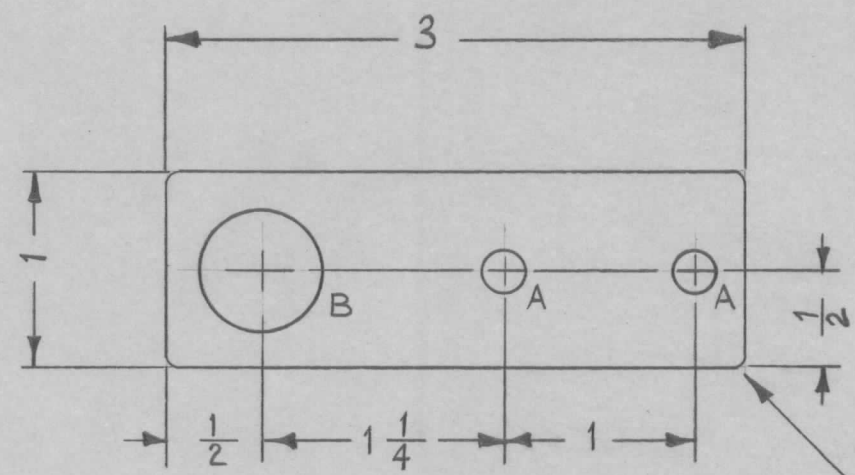
REQ. PER UNIT	USED ON			MS-2553
	MODEL	ASS'Y. NO.	DATE	
1	ACU		4-18-61	



ISSUE	ITEM	CHANGED FROM	DATE	CH. NO.	DRAFTS	CHECKER	ENG. APP.	REQ. ITEM	PART NO.	DESCRIPTION	SYMBOL	
								.081 TH'K STOCK SIZE		THE TECHNICAL MATERIEL CORP. MAMARONECK, NEW YORK		
								BRASS MATERIAL		PLATE, ROTOR		
TOLERANCES			SCALE: FULL (DO NOT SCALE).					$\frac{1}{2}H$		W.A.F.	J.We	JB
DEC. DIM. \pm FRAC. DIM. $\pm \frac{1}{64}$ ANGULAR DIM. \pm			MAXIMUM ALLOWABLE TOLERANCES HAVE BEEN DETERMINED AND ANY DEVIATIONS WILL BE CAUSE FOR REJECTION. REMOVE ALL BURRS AND SHARP EDGES					TYPE & TEMPER	HEATTREAT. SPEC.	DRAWN	CHECKED	FINAL APPROVAL
								.000025 RHODIUM PLATE			aa	MS-2553
								FINISH & SPEC. NO.	ELEC. DES. APP		MECH. DES. APP	

REQ. PER. UNIT	USED ON			MS-2554
	MODEL	ASS'Y. NO.	DATE	
1	ACU		4-20-61	

A ~ $\frac{7}{32}$ DIA. 2 REQ.
 B ~ $\frac{5}{8}$ DIA. 1 REQ.

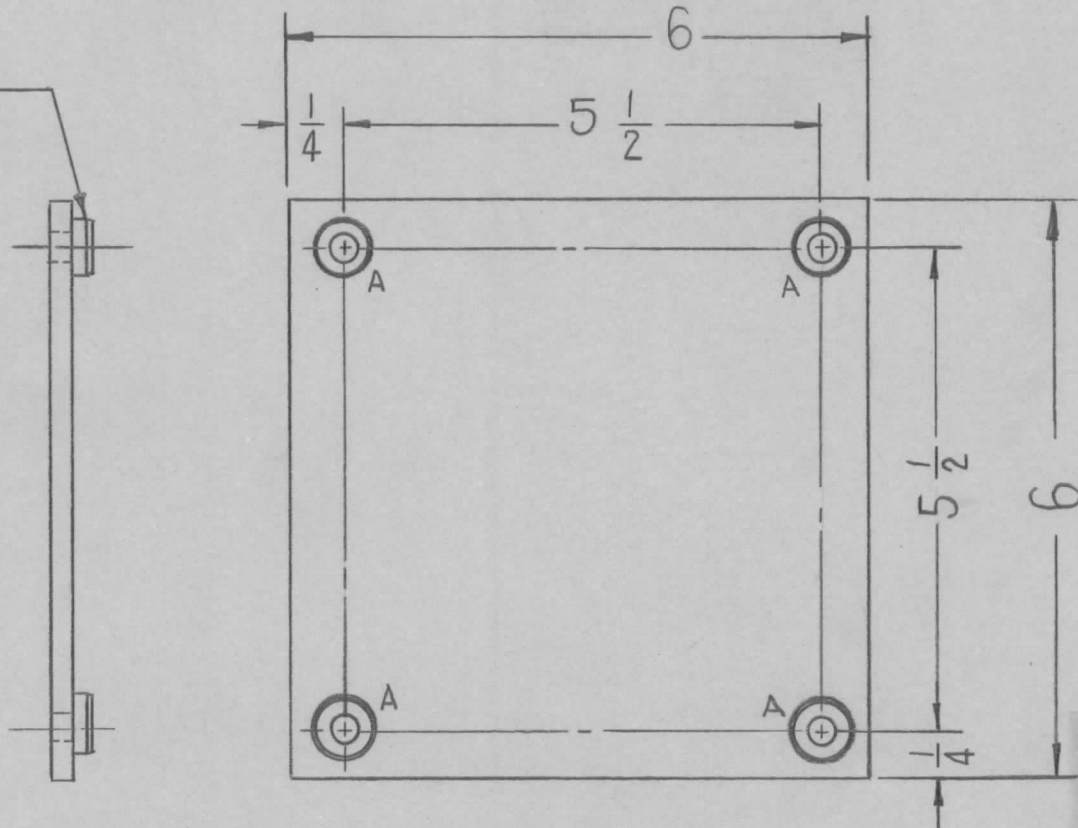


ROUND ALL CORNERS & SHARP EDGES.

								REQ.	ITEM	PART NO.	DESCRIPTION	SYMBOL					
										.081	THE TECHNICAL MATERIEL CORP.						
										STOCK SIZE	MAMARONECK, NEW YORK						
										COPPER	CONNECTOR, STRAP						
										MATERIAL							
ISSUE	ITEM	CHANGED FROM	DATE	CH. NO.	DRAFTS	CHECKER	ENG. APP.	$\frac{1}{2}$ H		WAF	JWC	JB					
TOLERANCES			SCALE: FULL (DO NOT SCALE).					TYPE & TEMPER	HEAT TREAT. SPEC.	DRAWN	CHECKED	FINAL APPROVAL					
DEC. DIM. \pm			MAXIMUM ALLOWABLE TOLERANCES HAVE BEEN DETERMINED AND ANY DEVIATIONS WILL BE CAUSE FOR REJECTION. REMOVE ALL BURRS AND SHARP EDGES					.0003 SILVER PLATE			aa	MS-2554					
FRAC. DIM. \pm 1/64													FINISH & SPEC. NO.	ELEC. DES. APP	MECH. DES. APP		
ANGULAR DIM. \pm																	

REQ. PER. UNIT	USED ON			MS-2555
	MODEL	ASS'Y. NO.	DATE	
1	ACU		4-18-61	

MOUNT IN ALL "A" HOLES AS SHOW AFTER FINISH



A-.224-.221 DIA - 4

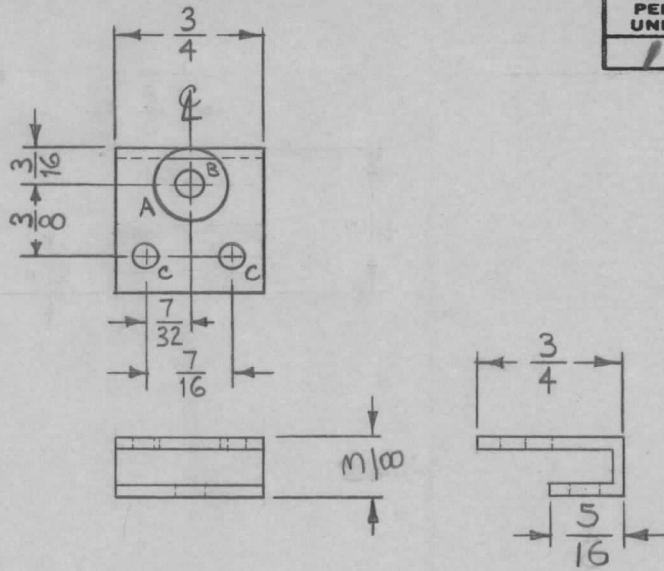
UNLESS OTHERWISE SPECIFIED DIMENSIONS ARE IN INCHES AND INCLUDE CHEMICALLY APPLIED OR PLATED FINISHES		
DECIMALS	TOLERANCES	FRACTIONS
.X ± .05		± 1/64
.XX ± .01		ANGLES ± 0° 30'
.XXX ± .005		

CUT HERE
GUARANTEED
2-66

4 1 NT-729-832-4 NUT ROUND, SWAGE TYPE A

REQ.	ITEM	PART NO.	DESCRIPTION	SYMBOL					
		16 GA	THE TECHNICAL MATERIEL CORP. MAMARONECK, NEW YORK	COVER PLATE					
		STOCK SIZE							
		STEEL							
		MATERIAL							
ISSUE	ITEM	CHANGED FROM	DATE	CH. NO.	DRAFTS	CHECKER	ENG. APP.		
TOLERANCES			SCALE: Do Not Scale						
DEC. DIM. ±			MAXIMUM ALLOWABLE TOLERANCES HAVE BEEN DETERMINED AND ANY DEVIATIONS WILL BE CAUSE FOR REJECTION.						
FRAC. DIM. ±			REMOVE ALL BURRS AND SHARP EDGES						
ANGULAR DIM. ±									
		CR	R. 2/220						
		TYPE & TEMPER	HEAT TREAT. SPEC.	DRAWN	CHECKED	FINAL APPROVAL			
		S220 RCAF BLUE							
		FINISH & SPEC. NO.	ELEC. DES. APP	MECH. DES. APP					
									MS-2555

REQ. PER UNIT	USED ON			MS-2556	A
	MODEL	ASS'Y. NO.	DATE		
1	AFC-1B		4-26-61		

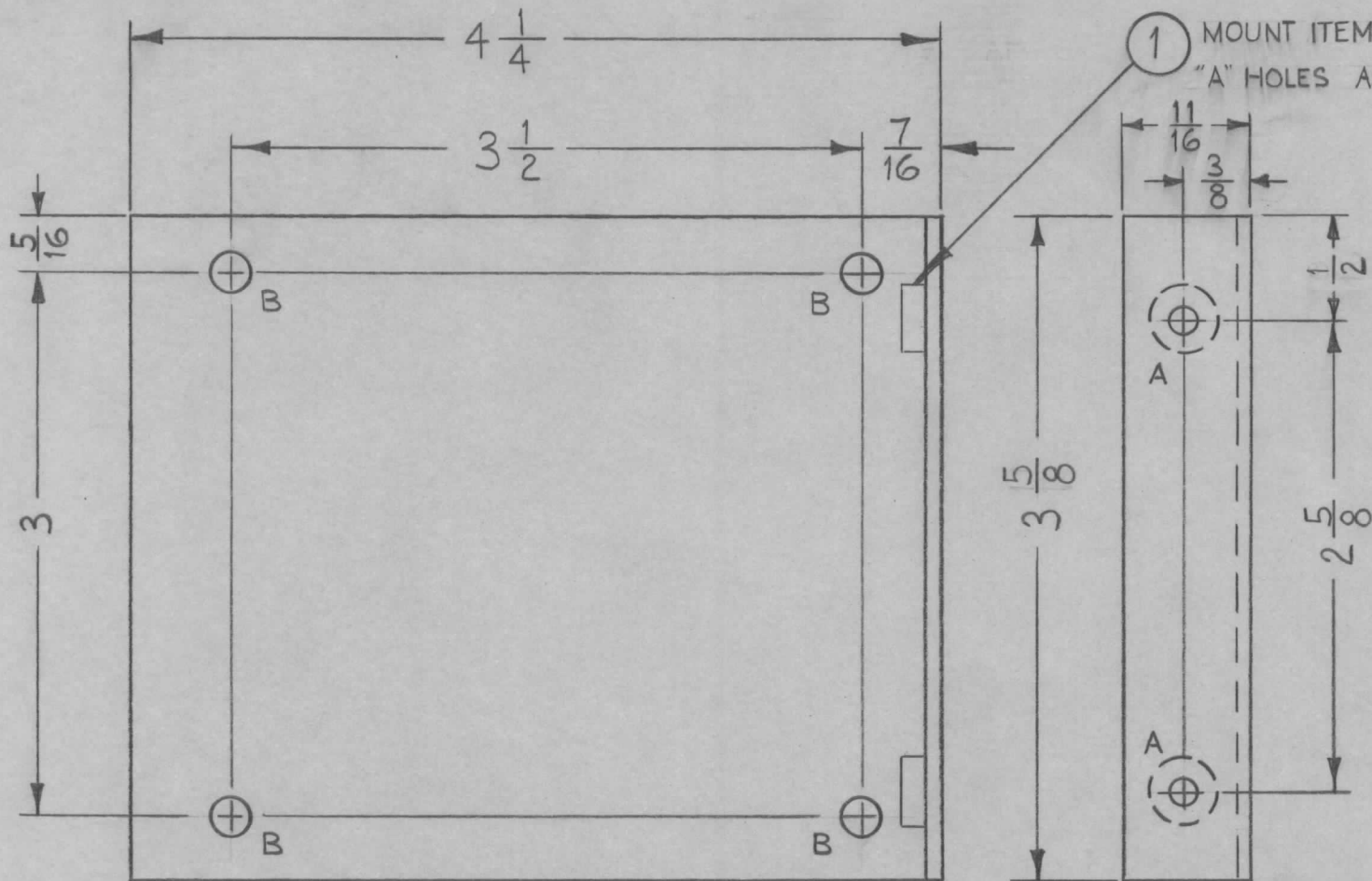


A ~ $\frac{5}{16}$ DIA. 1 REQ.
 B ~ .140 DIA. 1 REQ.
 C ~ .113 DIA. 2 REQ.



ISSUE	ITEM	CHANGED FROM	DATE	CH. NO.	DRAFTS	CHECKER	ENG. APP.	REQ.	ITEM	PART NO.	DESCRIPTION	SYMBOL	
										.051	THE TECHNICAL MATERIEL CORP.		
										STOCK SIZE	MAMARONECK, NEW YORK		
A	1	3/8 Dim. WAS 5/16 (A) Hole DIA. WAS 3/8, DIM 5/16 WAS 3/8	5-3-61	4831	RU	JCB	X/H			ALUMINUM	SUPPORT, CAPACITOR		
										MATERIAL			
TOLERANCES			SCALE: FULL (DO NOT SCALE)				5052-H32		W.A.F.	JWB			
DEC. DIM. ± FRAC. DIM. ± 1/64 ANGULAR DIM. ±			MAXIMUM ALLOWABLE TOLERANCES HAVE BEEN DETERMINED AND ANY DEVIATIONS WILL BE CAUSE FOR REJECTION. REMOVE ALL BURRS AND SHARP EDGES				TYPE & TEMPER	HEAT TREAT. SPEC.	DRAWN	CHECKED		FINAL APPROVAL	
							S404 YELL. IRIDITE		JCB			MS-2556	A
							FINISH & SPEC. NO.		ELEC. DES. APP	MECH. DES. APP			

REQ. PER. UNIT	USED ON			MS-2557
	MODEL	ASS'Y. NO.	DATE	
	1	CPP-5	4-26-61	



1 MOUNT ITEM 1 IN ALL "A" HOLES AS SHOWN.

A~.221-.224 DIA. 2 REQ.
 B~ 7/32 DIA. 4 REQ.

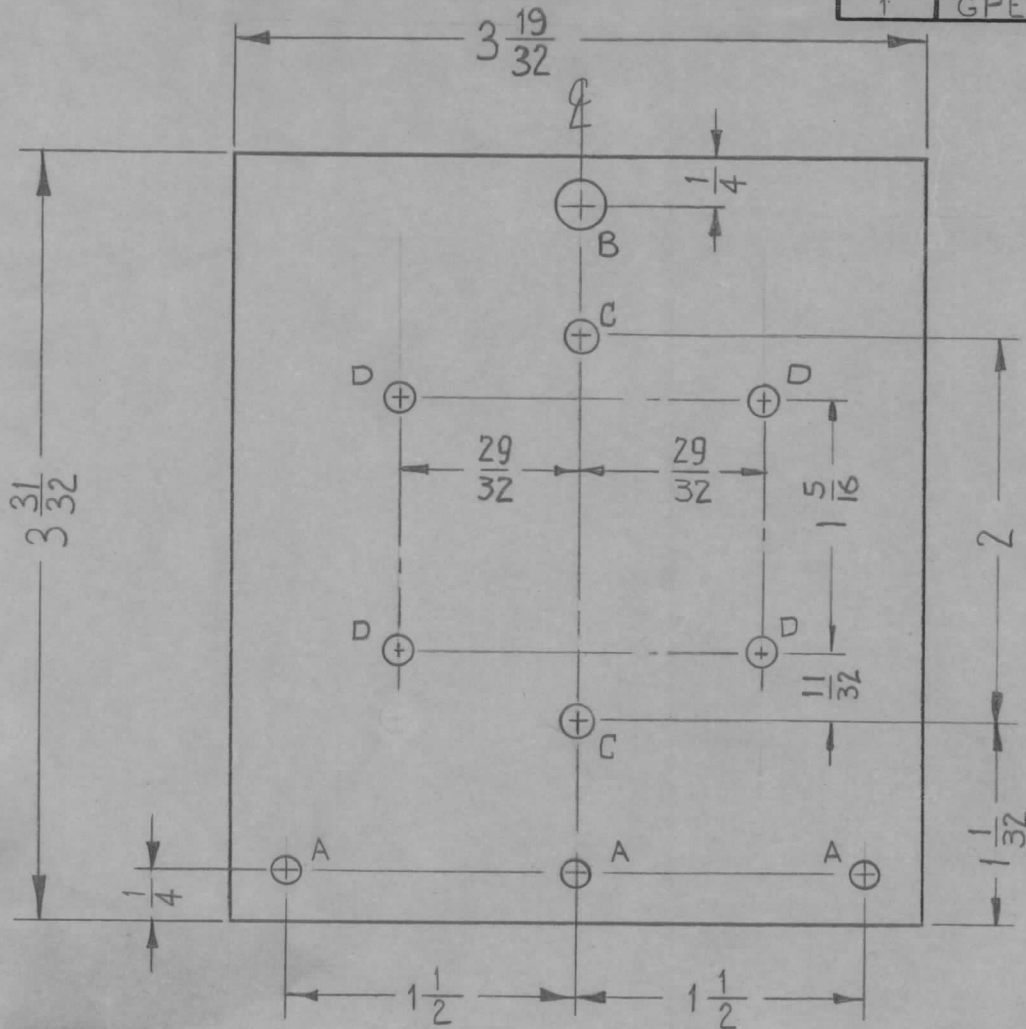
		2 1		NT-129-832-4		NUT, ROUND, SWAGE TYPE			
ISSUE	ITEM	CHANGED FROM	DATE	CH. NO.	DRAFTS	CHECKER	ENG. APP.	REQ.	ITEM
								PART NO.	
								.081	
								STOCK SIZE	
								ALUMINUM	
								MATERIAL	
								5052-H32	
								TYPE & TEMPER	
								S404 YELL; IRIDITE	
								HEAT TREAT. SPEC.	
								DRAWN	
								CHECKED	
								FINAL APPROVAL	
								MS-2557	
								ELEC. DES. APP	
								MECH. DES. APP	

TOLERANCES
 DEC. DIM. ±
 FRAC. DIM. ± 1/64
 ANGULAR DIM. ±

SCALE: FULL (DO NOT SCALE)
 MAXIMUM ALLOWABLE TOLERANCES HAVE BEEN DETERMINED AND ANY DEVIATIONS WILL BE CAUSE FOR REJECTION.
 REMOVE ALL BURRS AND SHARP EDGES

W.A.F. [Signature]
 DRAWN [Signature]
 CHECKED [Signature]
 FINAL APPROVAL [Signature]

REQ. PER. UNIT	USED ON			MS-2562	A
	MODEL	ASSY. NO.	DATE		
1	GPE-1		5-11-61		



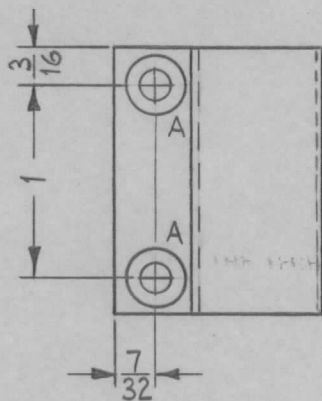
- A ~ 9/64 DIA. 3 REQ.
- B ~ 1/4 DIA. 1 REQ.
- C ~ 11/64 DIA. 2 REQ
- D ~ #47 DRILL 4 REQ

NOTE: (FINISH)
 S404 YELLOW IRIDITE
 S114 ZINC CHROMATE PRIMER
 S115 TMC SMOOTH GREY ENAMEL

REF: MS-2560 (8)

REQ.	ITEM	PART NO.	DESCRIPTION			SYMBOL	
		3/16	THE TECHNICAL MATERIEL CORP.				
		STOCK SIZE	MAMARONECK, NEW YORK				
		ALUMINUM	DOOR, OVEN				
		MATERIAL					
A	1	S114 Zinc Chromate Primer	8-5-61	5393	GDL	RU	
ISSUE	ITEM	CHANGED FROM	DATE	CH. NO.	DRAFTS	CHECKER	
TOLERANCES			SCALE: FULL (DO NOT SCALE)				
DEC. DIM. ±			MAXIMUM ALLOWABLE TOLERANCES HAVE BEEN DETERMINED AND ANY DEVIATIONS WILL BE CAUSE FOR REJECTION.				
FRAC. DIM. ± 1/64			REMOVE ALL BURRS AND SHARP EDGES				
ANGULAR DIM. ±							
2024-T3		TYPE & TEMPER		HEAT TREAT. SPEC.		DRAWN	
SEE NOTE		FINISH & SPEC. NO.		ELEC. DES. APP		MECH. DES. APP	
		M.A.F.		66		MS-2562	
		RSD		[Signature]		A	

REQ. PER UNIT	USED ON			MS-2575	A
	MODEL	ASS'Y. NO.	DATE		
1	CHG-2	OVEN	5-18-61		

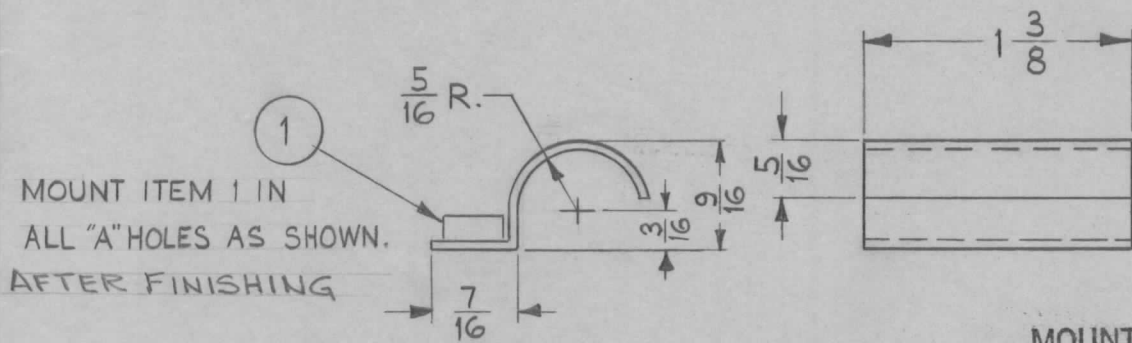


A-.161-.164 DIA. 2 REQ.

NOTICE TO PERSONS RECEIVING THIS DRAWING

THE TECHNICAL MATERIEL CORPORATION claims proprietary right in the material disclosed hereon. This drawing is issued in confidence for engineering information only and may not be reproduced or used to manufacture anything shown hereon without permission from THE TECHNICAL MATERIEL CORPORATION to the user. This drawing is loaned for mutual assistance and is subject to recall at any time.

Property of:
THE TECHNICAL MATERIEL CORPORATION
MAMARONECK, NEW YORK



MOUNT INSERTS AFTER FINISHING

							2	1	NT-129-440-3	NUT, ROUND, SWAGE TYPE	
							REQ.	ITEM	PART NO.	DESCRIPTION	SYMBOL
									.051	THE TECHNICAL MATERIEL CORP.	
									STOCK SIZE	MAMARONECK, NEW YORK	
									ALUMINUM	CLAMP, THERMOSTAT	
									MATERIAL		
									5052-H32	W.F.	J.H.
									TYPE & TEMPER	DRAWN	CHECKED
									HEAT TREAT. SPEC.		FINAL APPROVAL
									S404 YELL. IRIDITE	J.D.	MS-2575
									FINISH & SPEC. NO.	ELEC. DES. APP	MECH. DES. APP
											A

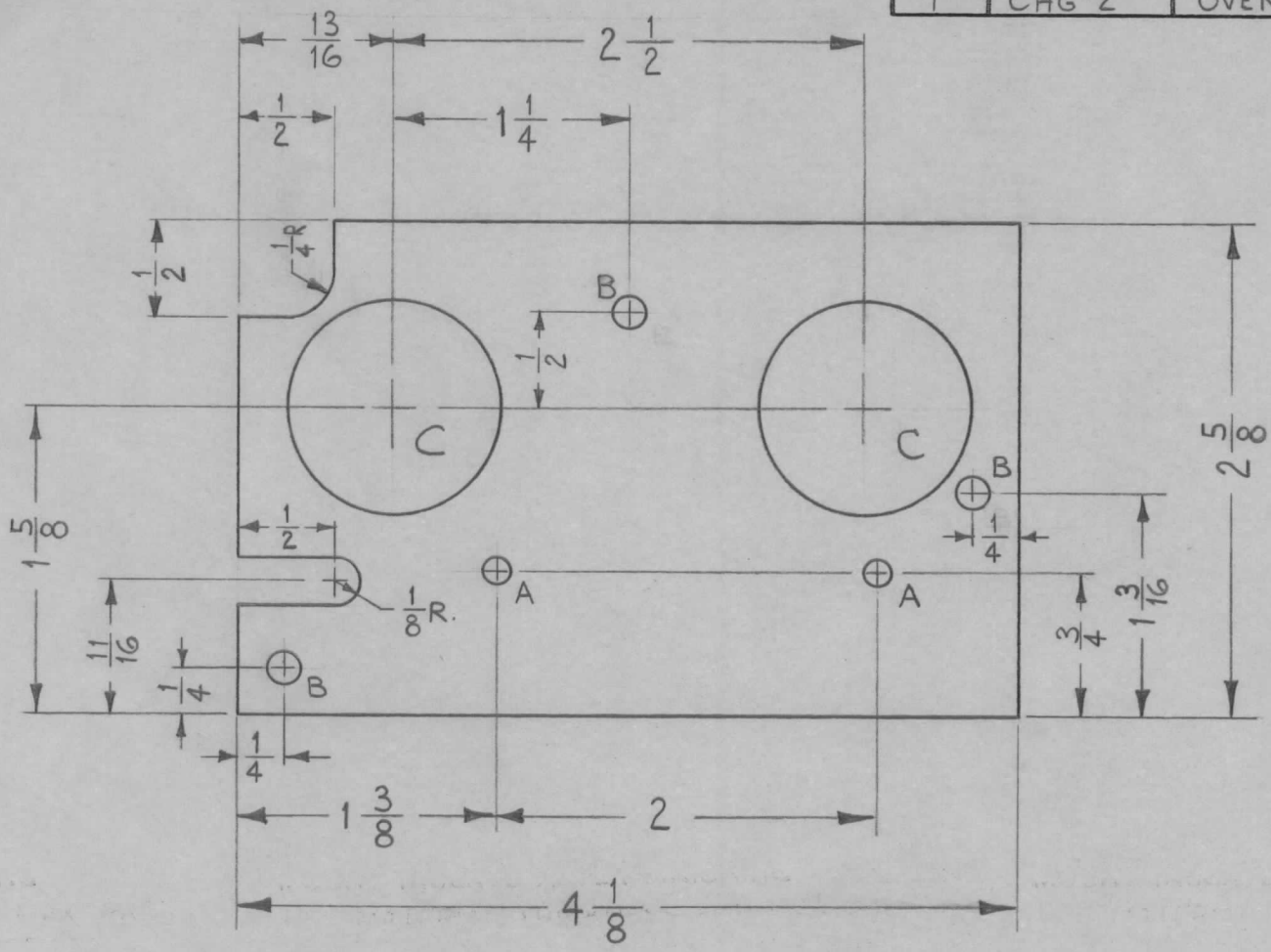
A 1 NT-129-440-3 WAS
NT-129-440-4

10/17/63 10225 [Signature] [Signature]

TOLERANCES
DEC. DIM. ±
FRAC. DIM. ± 1/64
ANGULAR DIM. ±

SCALE: FULL (DO NOT SCALE).
MAXIMUM ALLOWABLE TOLERANCES HAVE BEEN DETERMINED AND ANY DEVIATIONS WILL BE CAUSE FOR REJECTION. REMOVE ALL BURRS AND SHARP EDGES

REQ. PER. UNIT	USED ON			MS-2576
	MODEL	ASS'Y. NO.	DATE	
1	CHG-2	OVEN	5-19-61	



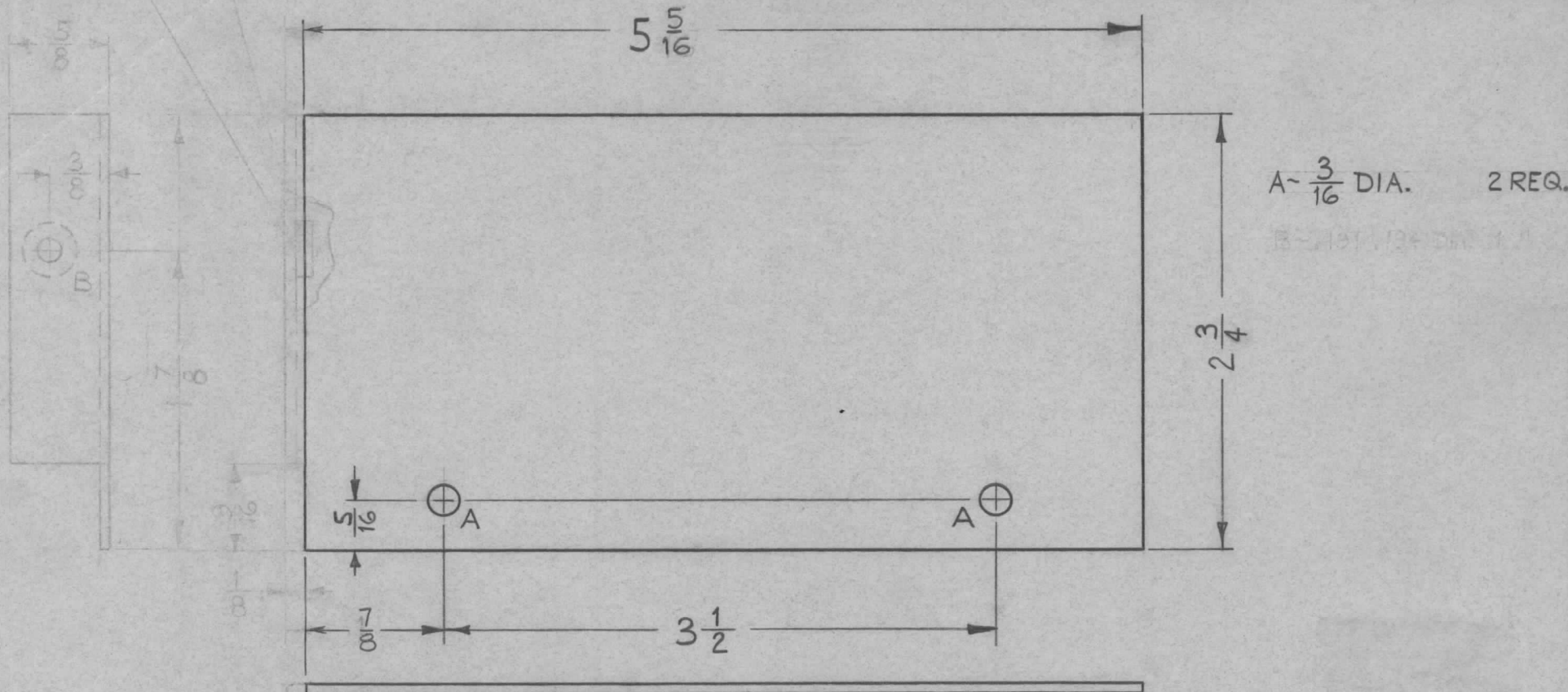
- A ~ $\frac{9}{64}$ DIA. 2 REQ.
- B ~ $\frac{11}{64}$ DIA. 3 "
- C ~ $\frac{1}{8}$ DIA. 2 "

REF: (1) LD-919

REQ.	ITEM	PART NO.	DESCRIPTION		SYMBOL				
		.064	THE TECHNICAL MATERIEL CORP.						
		STOCK SIZE	MAMARONECK, NEW YORK						
		ALUMINUM	OVEN SHELL, REAR COVER						
		MATERIAL							
ISSUE	ITEM	CHANGED FROM	DATE	CH. NO.	DRAFTS	CHECKER	ENG. APP.		
TOLERANCES			SCALE: (DO NOT SCALE).			5052-H32			
DEC. DIM. ±			MAXIMUM ALLOWABLE TOLERANCES HAVE BEEN DETERMINED AND ANY DEVIATIONS WILL BE CAUSE FOR REJECTION. REMOVE ALL BURRS AND SHARP EDGES			TYPE & TEMPER	HEAT TREAT. SPEC.		
FRAC. DIM. ± 1/64						S404 YELLOW IRIDITE		DRAWN	CHECKED
ANGULAR DIM. ±						FINISH & SPEC. NO.		ELEC. DES. APP	MECH. DES. APP
						W.A.F.	J.C.T.		
						S.D.	[Signature]		
						FINAL APPROVAL			
						MS-2576			

LOCATE ITEM 1 IN 'B' HOLE
AS SHOWN AFTER FINISHING

REQ. PER. UNIT	USED ON			MS-2583	A
	MODEL	ASS'Y. NO.	DATE		
1	CHG-2	SYNTH.	5-23-61		



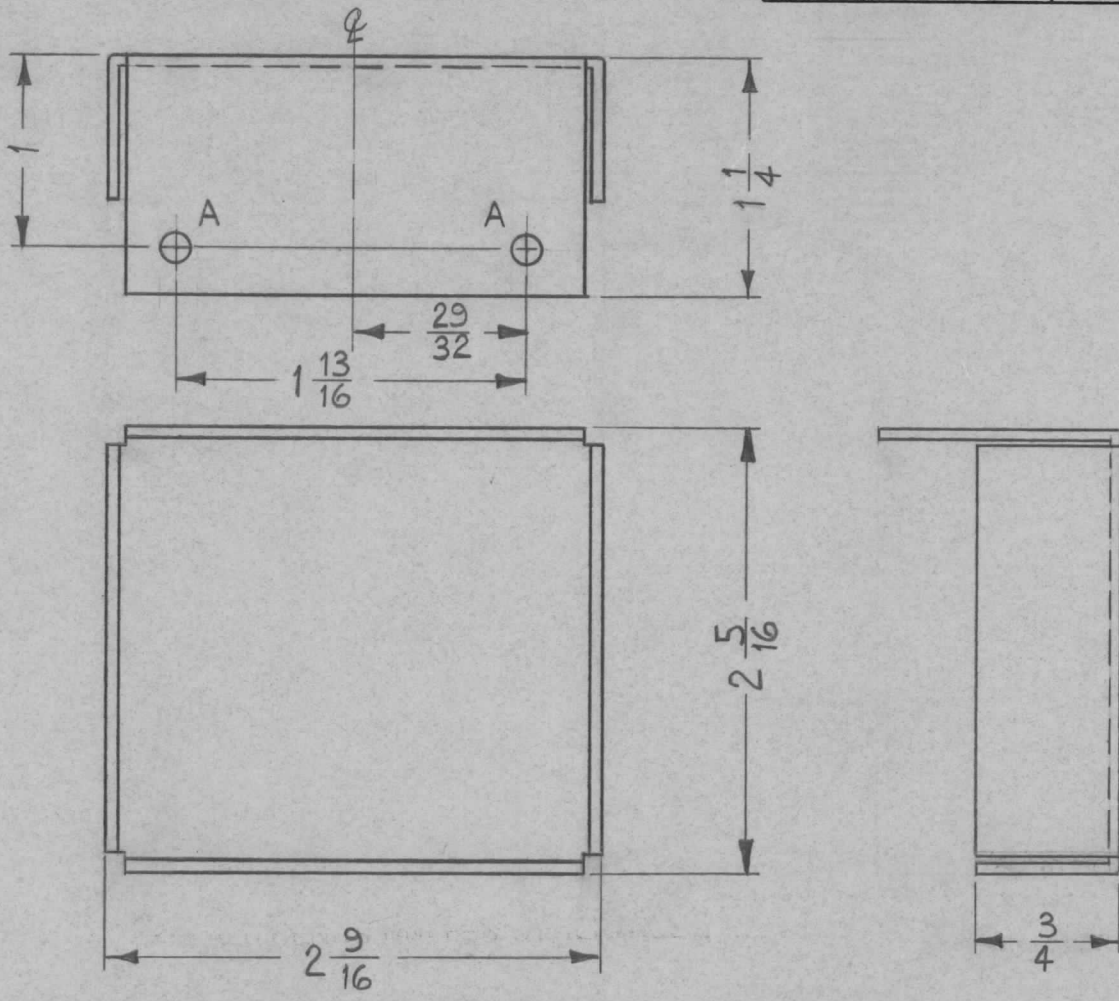
A - $\frac{3}{16}$ DIA. 2 REQ.

LOCATE INSERTS AFTER FINISHING
USE MATERIAL THICKNESS FOR MAX. DIMS
ON ALL BENDS UNLESS OTHERWISE SPECIFIED

1 NT 125-682-3 NUT ROUND, SWAGE TYPE

REQ.	ITEM	PART NO.	DESCRIPTION				SYMBOL	
		.051	THE TECHNICAL MATERIEL CORP.					
		STOCK SIZE	MAMARONECK, NEW YORK					
		ALUMINUM	COVER, SYNTHESIZER					
		MATERIAL						
A	3	LIP REMOVED, 'A' HOLES REWORKED DIM. 5 3/16 WAS 5 1/16	7-6-62	6889	Y.R.R.	<i>[Signature]</i>	<i>[Signature]</i>	
ISSUE	ITEM	CHANGED FROM	DATE	CH. NO.	DRAFTS	CHECKER	ENG. APP.	
TOLERANCES			SCALE: FULL (DO NOT SCALE)					
DEC. DIM. ±			MAXIMUM ALLOWABLE TOLERANCES HAVE BEEN DETERMINED AND ANY DEVIATIONS WILL BE CAUSE FOR REJECTION. REMOVE ALL BURRS AND SHARP EDGES					
FRAC. DIM. ± 1/64								
ANGULAR DIM. ±								
		5052-H32	TYPE & TEMPER		HEAT TREAT. SPEC.	DRAWN	CHECKED	FINAL APPROVAL
		S404 YELL. IRIDITE				<i>[Signature]</i>	<i>[Signature]</i>	MS-2583
		FINISH & SPEC. NO.	ELEC. DES. APP.		MECH. DES. APP.			A

REQ. PER. UNIT	USED ON			MS-2587
	MODEL	ASS'Y. NO.	DATE	
1	CHG-2	OSC.	5-26-61	



A - $\frac{5}{32}$ DIA. 2 REQ.

REF: LD-926 (1)

ISSUE	ITEM	CHANGED FROM	DATE	CH. NO.	DRAFTS	CHECKER	ENG. APP.	REQ. ITEM	PART NO.	DESCRIPTION	SYMBOL
									.051	THE TECHNICAL MATERIEL CORP.	
									STOCK SIZE	MAMARONECK, NEW YORK	
									ALUMINUM	SHIELD, TERMINAL STRIP	
									MATERIAL		
								5052-H32		<i>M.A.F.</i>	<i>[Signature]</i>
								TYPE & TEMPER	HEAT TREAT. SPEC.	DRAWN	CHECKED
								S404 YELL. IRIDITE		<i>S.D.</i>	<i>[Signature]</i>
								FINISH & SPEC. NO.		ELEC. DES. APP	MECH. DES. APP
											MS-2587

TOLERANCES
 DEC. DIM. ±
 FRAC. DIM. ± 1/64
 ANGULAR DIM. ±

SCALE: FULL (DO NOT SCALE)
 MAXIMUM ALLOWABLE TOLERANCES HAVE BEEN DETERMINED AND ANY DEVIATIONS WILL BE CAUSE FOR REJECTION. REMOVE ALL BURRS AND SHARP EDGES