

THE CONTENTS OF THIS DRAWING ARE THE EXCLUSIVE PROPERTY OF THE TECHNICAL MATERIEL CORP. ITS UNAUTHORIZED USE FOR REPRODUCTION IN WHOLE OR IN PART IS STRICTLY FORBIDDEN.

REQ. PER UNIT

USED ON

MODEL

ASS'Y. NO.

DATE

1

GPT-200K

AX-395

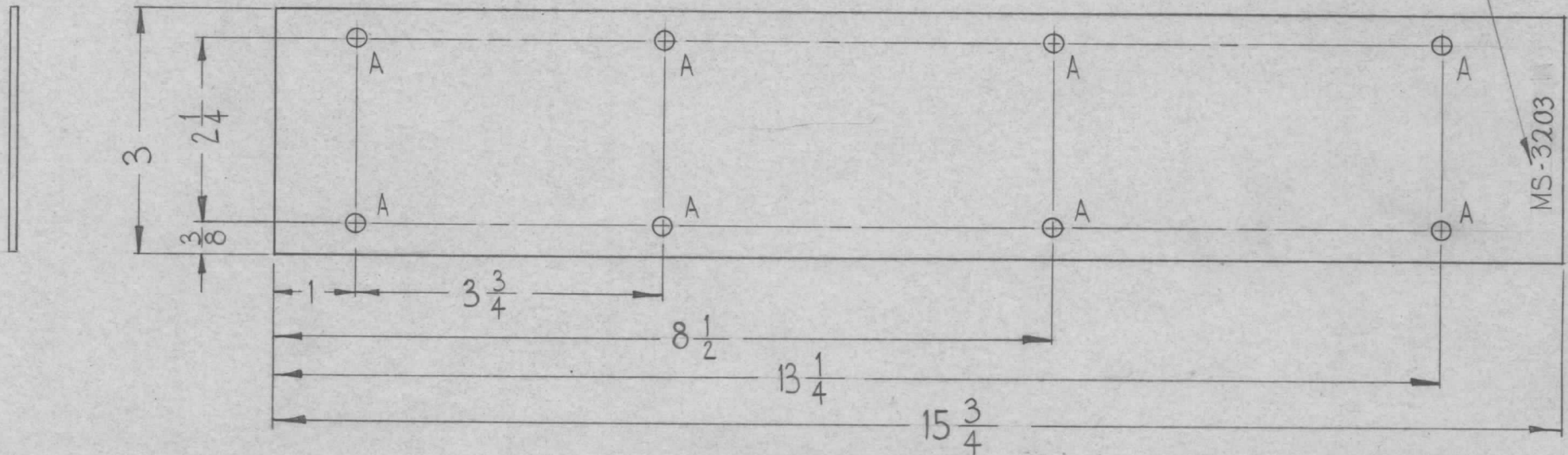
5-2-63

MS-3203



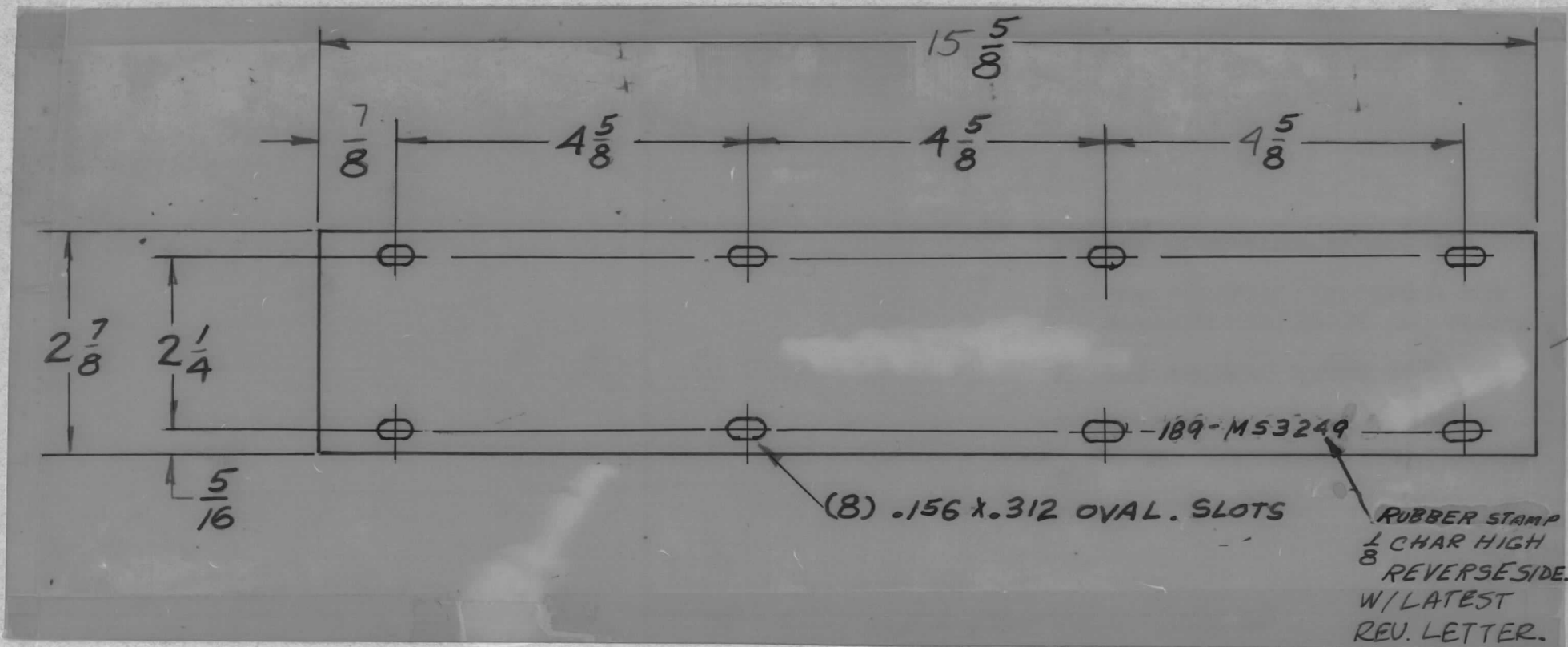
HOLE	DESCRIPTION	REQ.
A	13/64 DIA.	8

METAL STAMP TMC PART NO. 1/8  
HIGH GOTHIC AS SHOWN.  
WITH LATEST REVISION LETTER



SYM	DESCRIPTION	DATE	CH. NO.	DRAFTS	CHECKER	ENG. APP.	REQ. ITEM	PART NO.	F. BUDETTI	DESCRIPTION	SYMBOL	
							.064			THE TECHNICAL MATERIEL CORP. MAMARONECK. NEW YORK		
	ORIGINAL RELEASE FOR PRODUCTION	5-27-64					ALUMINUM			COVER, CONDUIT, RACEWAY		
							5052-H32		W.A. FRANCO	qa	RAC	
	UNLESS OTHERWISE SPECIFIED DIMENSIONS ARE IN INCHES AND INCLUDE CHEMICALLY APPLIED OR PLATED FINISHES	SCALE					TYPE & TEMPER	HEAT TREAT. SPEC.	DRAWN	CHECKED	FINAL APPROVAL	
		1/2 (Do Not Scale)					COPPER FLASH					
	DECIMALS .X ± .05 .XX ± .01 .XXX ± .005	FRACTIONS ± 1/64 ANGLES ± 0° 30'	CODE					FINISH & SPEC. NO.	ELEC. DES. APP.	MECH. DES. APP.	MS-3203	○
	TOLERANCES		A									

REQ. PER UNIT	USED ON			MS3205	A
	MODEL	ASS'Y. NO.	DATE		
1	GPT-200K	AX-395	9-10-65		



						REQ. ITEM	PART NO.	BUDETTI	DESCRIPTION	SYMBOL	
							064 THK.		THE TECHNICAL MATERIEL CORP.		
							STOCK SIZE		MAMARONECK, NEW YORK		
							ALUMINUM		COVER, CONDUIT RACEWAY		
							MATERIAL				
A	COMPLETELY REVISED	9/10/65	14385	H.V.S.	JCB		5052-H32	D. VENEZIAN	JCB	M. W. King 9/22/65	
SYM	DESCRIPTION	DATE	CH. NO.	DRAFTS	CHECKER	ENG. APP.	TYPE & TEMPER	HEAT TREAT. SPEC.	DRAWN	CHECKED	FINAL APPROVAL
UNLESS OTHERWISE SPECIFIED DIMENSIONS ARE IN INCHES AND INCLUDE CHEMICALLY APPLIED OR PLATED FINISHES		SCALE					S404-IRIDITE				MS3205 A
DECIMALS .X ± .05 .XX ± .01 .XXX ± .005	TOLERANCES	FRACTIONS ± 1/64 ANGLES ± 0° 30'	CODE				FINISH & SPEC. NO.	ELEC. DES. APP.	MECH. DES. APP.		

THE CONTENTS OF THIS DRAWING ARE THE EXCLUSIVE PROPERTY OF THE TECHNICAL MATERIEL CORP. ITS UNAUTHORIZED USE FOR REPRODUCTION IN WHOLE OR IN PART IS STRICTLY FORBIDDEN.

REQ. PER UNIT

2

USED ON

MODEL

GPT-200K

ASS'Y. NO.

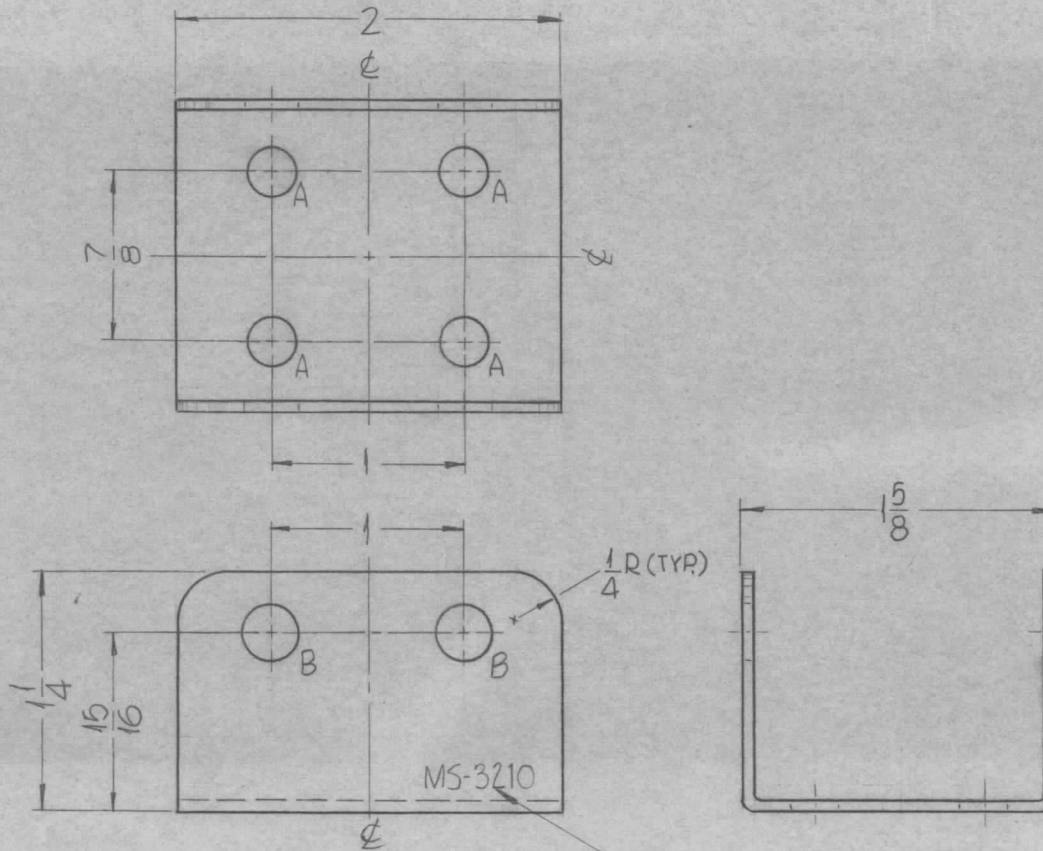
AS-124

DATE

1-15-63

MS-3210

0



METAL STAMP TMC PART NO. 1/8 HIGH GOTHIC.

HOLES: REQ.  
A ~ 15/64 DIA. 4  
B ~ 9/32 DIA. 4

UNLESS OTHERWISE SPECIFIED:

1. USE MATERIAL THICKNESS FOR MAXIMUM RADIUS ON ALL BENDS.
2. ALL ANGULAR BENDS 90°.
3. REMOVE ALL BURRS AND SHARP EDGES.
4. - POLISH BEFORE PLATING.

REQ.	ITEM	PART NO.	F. BUDETTI			DESCRIPTION	SYMBOL
		1/16 THICK				THE TECHNICAL MATERIEL CORP. MAMARONECK, NEW YORK	BRACKET, SUPPORT WAFER
		STOCK SIZE					
		COPPER					
		MATERIAL					
					SRG	aa	RR
			TYPE & TEMPER	HEAT TREAT. SPEC.	DRAWN	CHECKED	FINAL APPROVAL
			SILVER PLATE .0003		SRG	RR	MS-3210 0
			FINISH & SPEC. NO.		ELEC. DES. APP.	MECH. DES. APP.	

UNLESS OTHERWISE SPECIFIED DIMENSIONS ARE IN INCHES AND INCLUDE CHEMICALLY APPLIED OR PLATED FINISHES

SCALE 1"=1"

DECIMALS .X ± .05 .XX ± .01 .XXX ± .005 TOLERANCES FRACTIONS ± 1/64 ANGLES ± 0° 30'



THE CONTENTS OF THIS DRAWING ARE THE EXCLUSIVE PROPERTY OF THE TECHNICAL MATERIEL CORP. ITS UNAUTHORIZED USE FOR REPRODUCTION IN WHOLE OR IN PART IS STRICTLY FORBIDDEN.

REQ. PER UNIT

USED ON

MODEL

ASS'Y. NO.

DATE

1

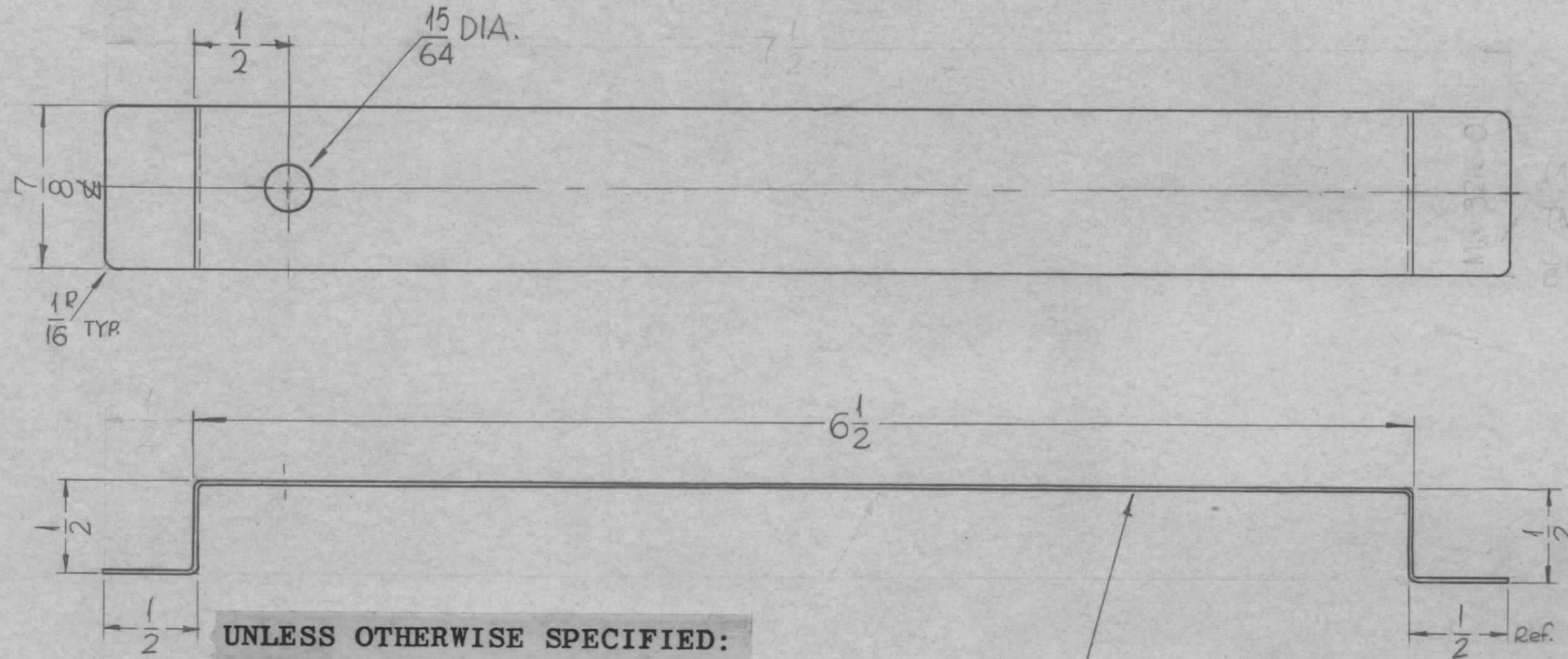
GPT-200K(AK392)

A-3158

6-25-63

MS-3216

0



UNLESS OTHERWISE SPECIFIED:

1. USE MATERIAL THICKNESS FOR MAXIMUM RADIUS ON ALL BENDS.
2. ALL ANGULAR BENDS 90°.
3. REMOVE ALL BURRS AND SHARP EDGES.

METAL STAMP TMC PART NO. 1/8 HIGH GOTHIC.  
MS-3216-0.

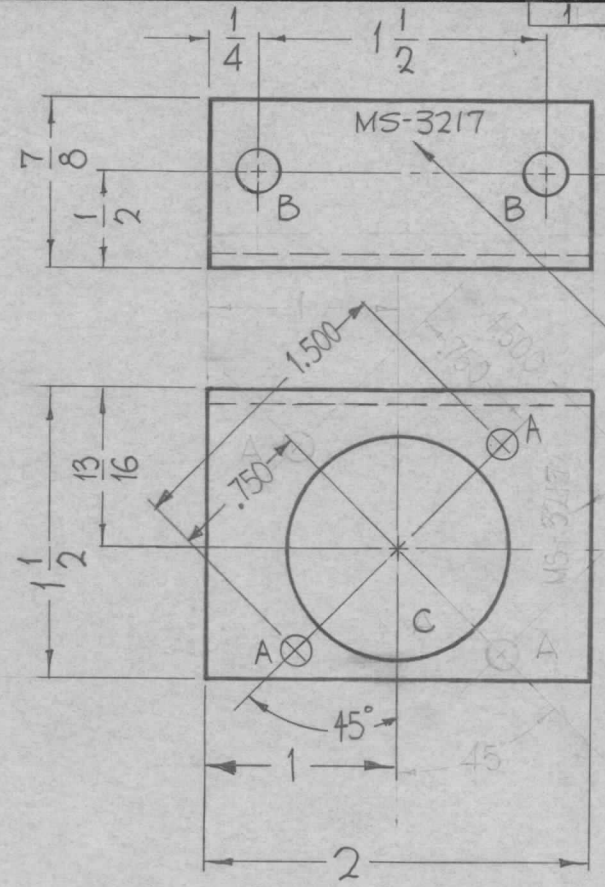
REQ.	ITEM	PART NO.	F. BUDETTI			DESCRIPTION	SYMBOL
		.019	THE TECHNICAL MATERIEL CORP.				
		STOCK SIZE	MAMARONECK.				
		COPPER	NEW YORK				
		MATERIAL	STRAP, CONNECTING				
○	ORIGINAL RELEASE FOR PRODUCTION	4/6/64					
SYM	DESCRIPTION	DATE	CH. NO.	DRAFTS	CHECKER	ENG. APP.	
UNLESS OTHERWISE SPECIFIED DIMENSIONS ARE IN INCHES AND INCLUDE CHEMICALLY APPLIED OR PLATED FINISHES		SCALE	#				
DECIMALS	TOLERANCES	FRACTIONS	CODE				
.X ± .05		± 1/64	A				
.XX ± .01		ANGLES					
.XXX ± .005		± 0° 30'					
		SOFT			SRG	aa gcb	RJC 4-7-64
		TYPE & TEMPER	HEAT TREAT. SPEC.	DRAWN	CHECKED	FINAL APPROVAL	
		5245 SILVER PLATE		DBTB	AK 3/13/64	MS-3216 0	
		FINISH & SPEC. NO.	ELEC. DES. APP.	MECH. DES. APP.			



THE CONTENTS OF THIS DRAWING ARE THE EXCLUSIVE PROPERTY OF THE TECHNICAL MATERIEL CORP. ITS UNAUTHORIZED USE FOR REPRODUCTION IN WHOLE OR IN PART IS STRICTLY FORBIDDEN.

REQ. PER UNIT	USED ON		
	MODEL	ASS'Y. NO.	DATE
2	GPT-200K (AT-105)	AM-118	7-3-63
1	GPT-200K (AT-105)	A-3473	2-27-64

MS-3217 0



HOLES	REQ.
A - 5/32 DIA.	2
B - 15/64 DIA.	2
C - 1-1/8 DIA.	1

METAL STAMP TMC PART NO. 1/8 HIGH GOTHIC. W/LATEST REVISION LETTER

- UNLESS OTHERWISE SPECIFIED:
1. USE MATERIAL THICKNESS FOR MAXIMUM RADIUS ON ALL BENDS.
  2. ALL ANGULAR BENDS 90°.
  3. REMOVE ALL BURRS AND SHARP EDGES.

REF- TMC DWG. NO. LD-1205, LD-1206, LD-1376

SYM	DESCRIPTION	DATE	CH. NO.	DRAFTS	CHECKER	ENG. APP.	REQ. ITEM	PART NO.	F. BUDETTI	DESCRIPTION	SYMBOL
								.081 THICK		THE TECHNICAL MATERIEL CORP. MAMARONECK, NEW YORK	
								STOCK SIZE			
								ALUMINUM		BRACKET, COMPONENT MTG.	
										MTG	
								5052-H-32	John C. Biele	aa	Roe
								TYPE & TEMPER			
								HEAT TREAT. SPEC.			
								S404-IRIDITE, 14-2AL-COAT		1/2/64	
								FINISH & SPEC. NO.			
											MS-3217 0

THE CONTENTS OF THIS DRAWING ARE THE EXCLUSIVE PROPERTY OF THE TECHNICAL MATERIEL CORP. ITS UNAUTHORIZED USE FOR REPRODUCTION IN WHOLE OR IN PART IS STRICTLY FORBIDDEN.

REQ. PER UNIT

USED ON

MODEL

ASS'Y. NO.

DATE

2

GPT-200K

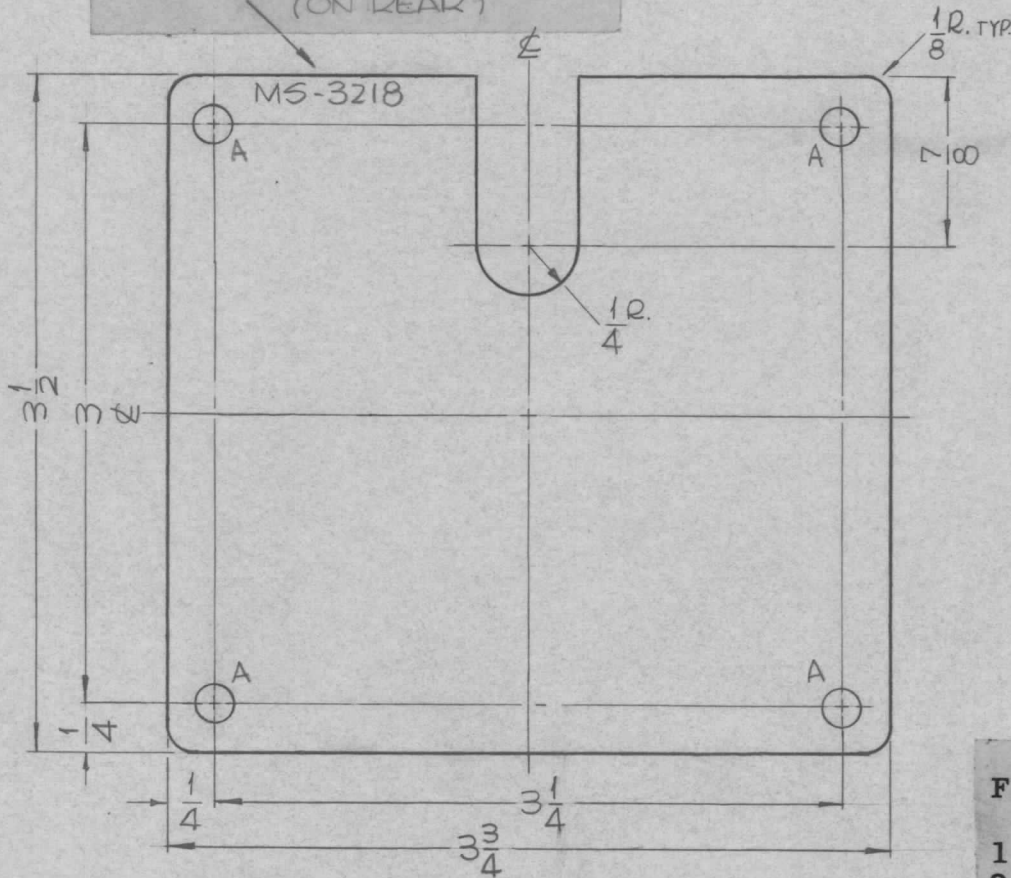
AM-118

7-11-63

MS-3218

○

METAL STAMP TMC PART NO., W/LATEST REVISIONS.  
1/8 HIGH GOTHIC.  
(ON REAR)



HOLES:

A ~ 11/64 DIA. (4REQ.)

FINISH NOTES:

1. S404 - IRIDITE 14-2 AL-COAT.
2. S114 - ZINC CHROMATE PRIMER) FRONT AND
3. S115 - SMOOTH GRAY ENAMEL ) EDGES ONLY

FRONT VIEW SHOWN

REQ.	ITEM	PART NO.	F. BUDETTI			DESCRIPTION	SYMBOL
		.081 THICK	THE TECHNICAL MATERIEL CORP.				
		STOCK SIZE	MAMARONECK, NEW YORK				
0	ORIGINAL RELEASE FOR PRODUCTION	ALUMINUM	COVER, CHASSIS, METERING CIRCUIT				
SYM	DESCRIPTION	DATE	CH. NO.	DRAFTS	CHECKER	ENG. APP.	
UNLESS OTHERWISE SPECIFIED DIMENSIONS ARE IN INCHES AND INCLUDE CHEMICALLY APPLIED OR PLATED FINISHES		SCALE					
DECIMALS .X ± .05 .XX ± .01 .XXX ± .005		TOLERANCES		FRACTIONS ± 1/64 ANGLES ± 0° 30'		CODE A	
5052-H32		5-13-64		0	A.M.		
TYPE & TEMPER		HEAT TREAT. SPEC.		DRAWN		CHECKED	FINAL APPROVAL
S404 YELLOW IRIDITE				SRG		RWC	
FINISH & SPEC. NO.		ELEC. DES. APP.		MECH. DES. APP.		MS-3218 ○	



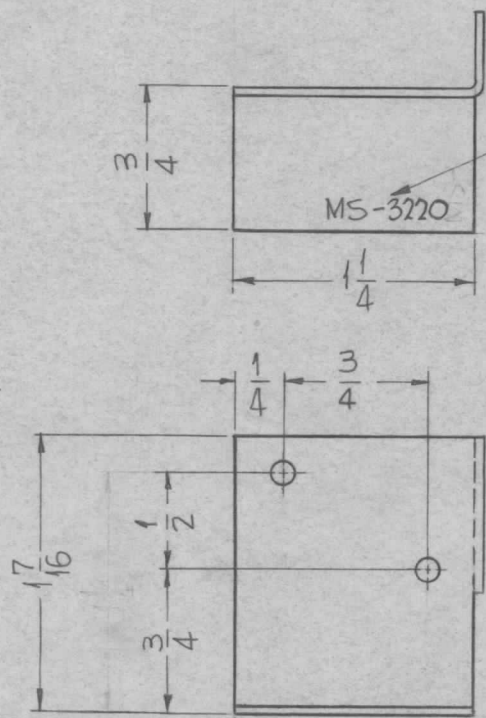




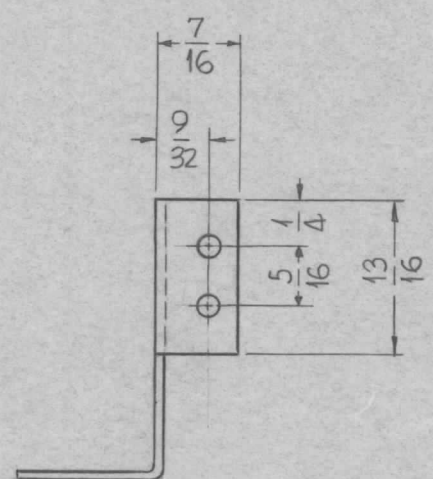
THE CONTENTS OF THIS DRAWING ARE THE EXCLUSIVE PROPERTY OF THE TECHNICAL MATERIEL CORP. ITS UNAUTHORIZED USE OR REPRODUCTION IN WHOLE OR IN PART IS STRICTLY FORBIDDEN.

REQ. PER UNIT	USED ON		
	MODEL	ASS'Y. NO.	DATE
1	GPT-200K, AP-109	A-3124	11-30-62
1	GPT-200K, AP-111	A-3124	11-30-62

MS-3220 0



METAL STAMP TMC PART NO. 1/8" HIGH GOTHIC AS SHOWN.



HOLES:  
1/8" DIA. (4 REQ.)

**UNLESS OTHERWISE SPECIFIED:**

1. USE MATERIAL THICKNESS FOR MAXIMUM RADIUS ON ALL BENDS.
2. ALL ANGULAR BENDS 90°.
3. REMOVE ALL BURRS AND SHARP EDGES.

ALL BENDS 90°

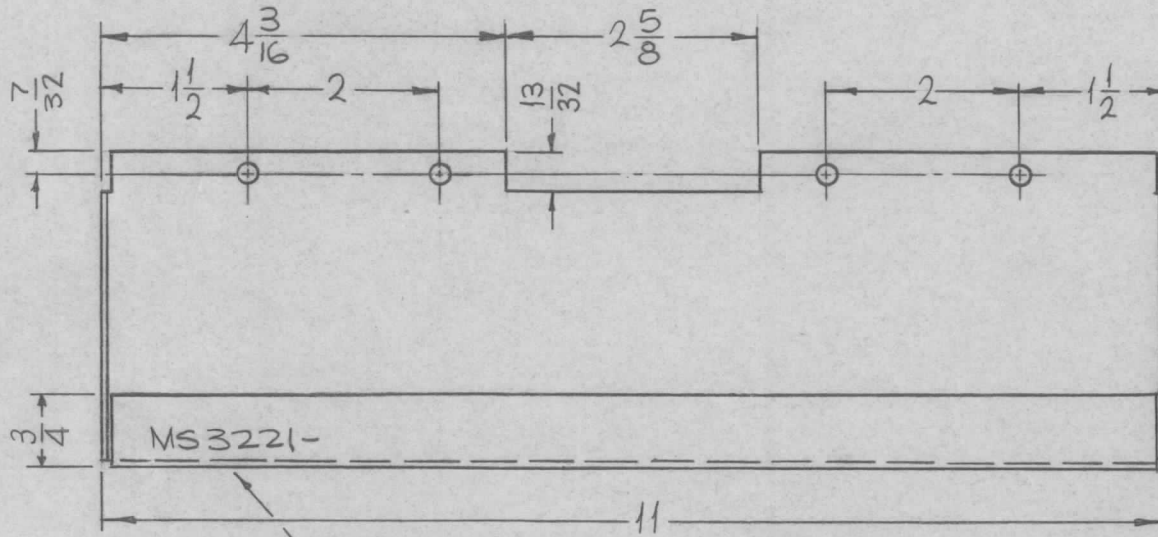
SYM	DESCRIPTION	DATE	CH. NO.	DRAFTS	CHECKER	ENG. APP.	REQ. ITEM	PART NO.	F. BUDETTI	DESCRIPTION	SYMBOL	
							.051 THICK		THE TECHNICAL MATERIEL CORP.			
							STOCK SIZE		MAMARONECK, NEW YORK			
0	ORIGINAL RELEASE	5.16.64		JTB			ALUMINUM		BRACKET, SWITCH MOUNTING			
							MATERIAL					
							5052	H-32	SRG	aa	KPC	
UNLESS OTHERWISE SPECIFIED:		SCALE: —					TYPE & TEMPER	HEATTREAT. SPEC.	DRAWN	CHECKED	FINAL APPROVAL	
DIMENSIONS ARE IN INCHES		MAXIMUM ALLOWABLE TOLERANCES HAVE BEEN DETERMINED AND ANY DEVIATIONS WILL BE CAUSE FOR REJECTION. REMOVE ALL BURRS AND SHARP EDGES					5404 YELLOW IRIDITE				MS-3220 0	
TOLERANCES ON							FRAC. ± 1/64 DEC. ± .005 ANGLES ± 1/2°		FINISH & SPEC. NO.		ELEC. DES. APP.	

UNLESS OTHERWISE SPECIFIED:

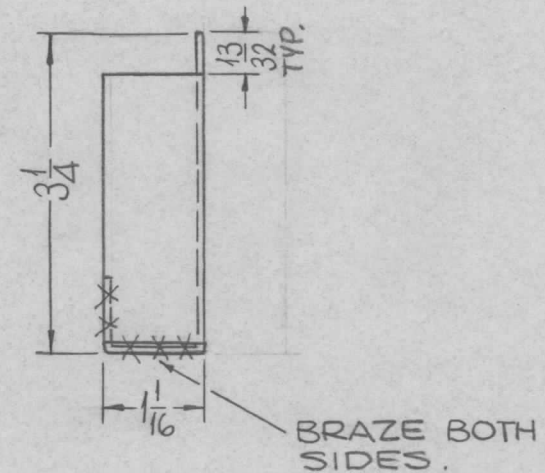
1. USE MATERIAL THICKNESS FOR MAXIMUM RADIUS ON ALL BENDS
2. ALL ANGULAR BENDS 90 DEGREES
3. REMOVE ALL BURRS AND SHARP EDGES

REQ. PER UNIT	USED ON			MS3221	Ø
	MODEL	ASS'Y. NO.	DATE		
1	GPT-200K		4-1-65		

HOLES:  
13/64 DIA. (4REQ.)



METAL STAMP TMC PART NO. 1/8 HIGH GOTHIC W/LATEST REV. LETTER.



							REQ. ITEM	PART NO.	F. BUDETTI	DESCRIPTION	SYMBOL	
							.031 THICK		THE TECHNICAL MATERIEL CORP.			
							STOCK SIZE		MAMARONECK, NEW YORK			
							ALUMINUM		SHIELD, INTERLOCKS, PA.			
							MATERIAL					
Ø	ORIGINAL RELEASE FOR PRODUCTION	4/12/65	AA	SRG			5052-H32	SRG	<i>[Signature]</i>	<i>[Signature]</i>		
XI	REVISED & REDRAWN	4/9/65	AA	SRG			S404 YEL. IRIDITE	<i>[Signature]</i>	<i>[Signature]</i>	MS3221	Ø	
SYM	DESCRIPTION	DATE	CH. NO.	DRAFTS	CHECKER	ENG. APP.	TYPE & TEMPER	HEAT TREAT. SPEC.	DRAWN	CHECKED	FINAL APPROVAL	
UNLESS OTHERWISE SPECIFIED DIMENSIONS ARE IN INCHES AND INCLUDE CHEMICALLY APPLIED OR PLATED FINISHES		SCALE					1/2:1					
DECIMALS	TOLERANCES	FRACTIONS	CODE									
.X ± .05 .XX ± .01 .XXX ± .005		± 1/64 ANGLES ± 0° 30'	A									
							FINISH & SPEC. NO.		ELEC. DES. APP.	MECH. DES. APP.		

THE CONTENTS OF THIS DRAWING ARE THE EXCLUSIVE PROPERTY OF THE TECHNICAL MATERIEL CORP. ITS UNAUTHORIZED USE OR REPRODUCTION IN WHOLE OR IN PART IS STRICTLY FORBIDDEN.

REQ. PER UNIT

4

USED ON

MODEL

GPT-200K

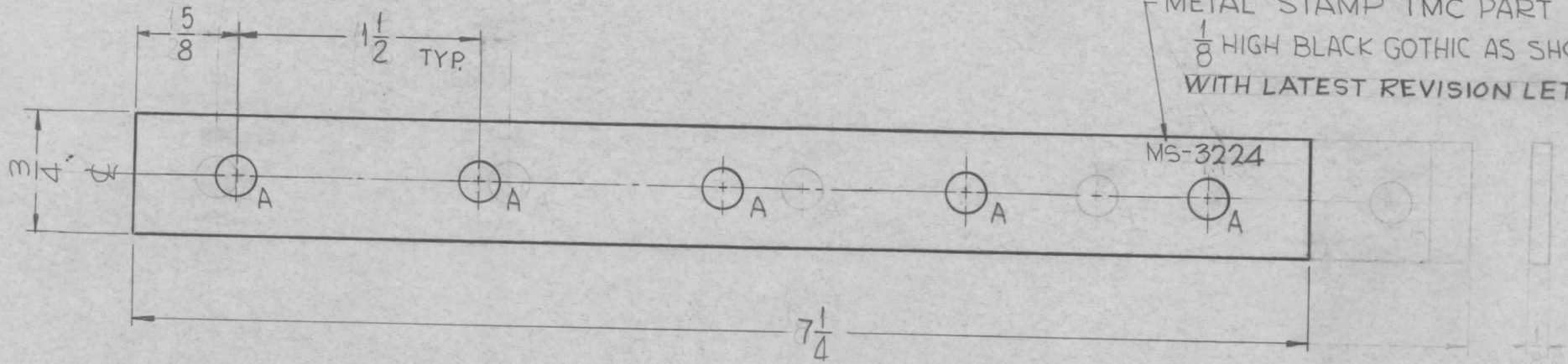
ASS'Y. NO.

AX-394

DATE

10-15-62

MS-3224



METAL STAMP TMC PART NO. 1/8 HIGH BLACK GOTHIC AS SHOWN. WITH LATEST REVISION LETTER

HOLE	DESCRIPTION	REQ.
A	15/64 DIA.	5

										REQ.	ITEM	PART NO.	F. BUDETTI	DESCRIPTION	SYMBOL	
												1/8 THICK		THE TECHNICAL MATERIEL CORP.		
												STOCK SIZE		MAMARONECK, NEW YORK		
												ALUMINUM		PLATE, RESISTOR CONTACT		
												MATERIAL				
													SRG	aa	RAC	
												TYPE & TEMPER	HEAT TREAT. SPEC.	DRAWN	CHECKED	FINAL APPROVAL
												S404 YEL. IRIDITE		OB	11/2/64	MS-3224
												FINISH & SPEC. NO.	ELEC. DES. APP.	MECH. DES. APP.		

UNLESS OTHERWISE SPECIFIED:  
DIMENSIONS ARE IN INCHES  
TOLERANCES ON  
FRAC. ± 1/64 DEC. ± .005 ANGLES ± 1/2°

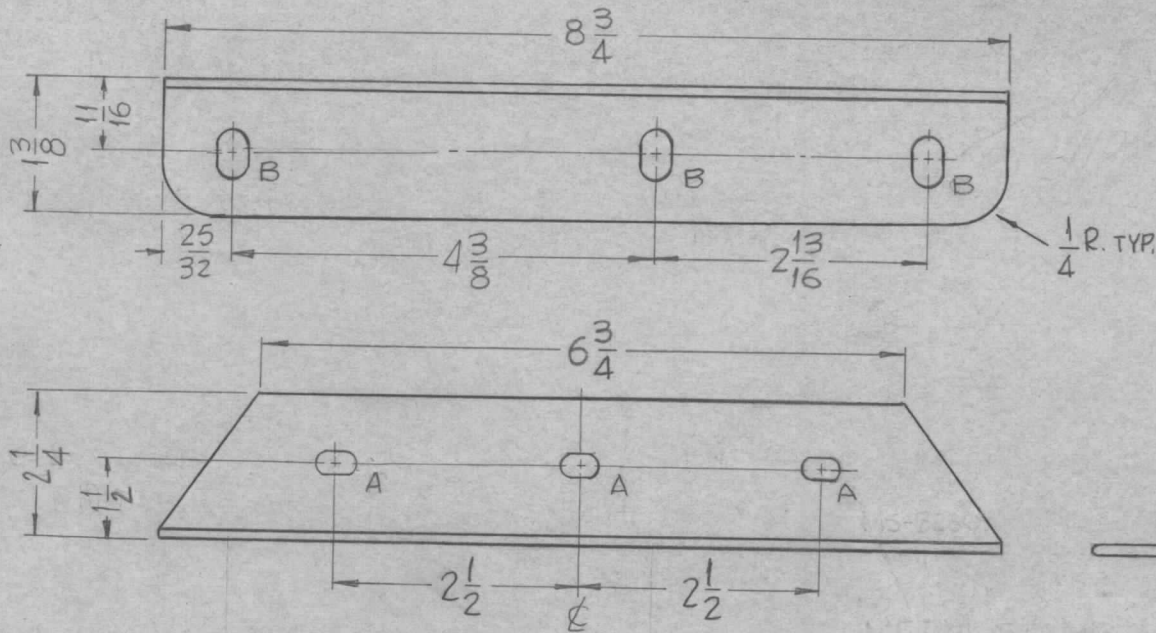
SCALE:  
MAXIMUM ALLOWABLE TOLERANCES HAVE BEEN DETERMINED AND ANY DEVIATIONS WILL BE CAUSE FOR REJECTION. REMOVE ALL BURRS AND SHARP EDGES



THE CONTENTS OF THIS DRAWING ARE THE EXCLUSIVE PROPERTY OF THE TECHNICAL MATERIEL CORP. ITS UNAUTHORIZED USE FOR REPRODUCTION IN WHOLE OR IN PART IS STRICTLY FORBIDDEN.

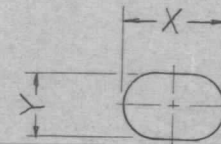
REQ. PER UNIT	USED ON		
	MODEL	ASS'Y. NO.	DATE
1	GPT-200K (AX-395)	A-2823	4-24-63

MS-3230 0



METAL STAMP TMC PART NO. 1/8 HIGH GOTHIC ON REAR

SLOT	DIMENSION		REQ.
	X	Y	
A	3/8	7/32	3
B	1/2	5/16	3



UNLESS OTHERWISE SPECIFIED:

1. USE MATERIAL THICKNESS FOR MAXIMUM RADIUS ON ALL BENDS.
2. ALL ANGULAR BENDS 90°.
3. REMOVE ALL BURRS AND SHARP EDGES.
4. ROUND ALL EDGES 1/16 RADIUS
5. POLISH BEFORE PLATING.

REQ.	ITEM	PART NO.	F. BUDETTI	DESCRIPTION	SYMBOL
		1/8 THICK		THE TECHNICAL MATERIEL CORP.	
		STOCK SIZE		MAMARONECK, NEW YORK	
		COPPER		BRACKET, CONDUCTOR MTG.	
		MATERIAL			
		SOFT	SRG	AA 908 RDC 3/23/64	
		TYPE & TEMPER		DRAWN	CHECKED
		HEAT TREAT. SPEC.			FINAL APPROVAL
		S-245 SILVER PLATE, BRIGHT	DB RB	acc 2/1/64	MS-3230 0
		FINISH & SPEC. NO.	ELEC. DES. APP.	MECH. DES. APP.	

UNLESS OTHERWISE SPECIFIED DIMENSIONS ARE IN INCHES AND INCLUDE CHEMICALLY APPLIED OR PLATED FINISHES

DECIMALS  
 .X ± .05  
 .XX ± .01  
 .XXX ± .005

FRACTIONS  
 ± 1/64  
 ANGLES  
 ± 0° 30'

TOLERANCES

SCALE DO NOT SCALE

CODE A

THE CONTENTS OF THIS DRAWING ARE THE EXCLUSIVE PROPERTY OF THE TECHNICAL MATERIEL CORP. ITS UNAUTHORIZED USE FOR REPRODUCTION IN WHOLE OR IN PART IS STRICTLY FORBIDDEN.

REQ. PER UNIT

USED ON

MODEL

ASS'Y. NO.

DATE

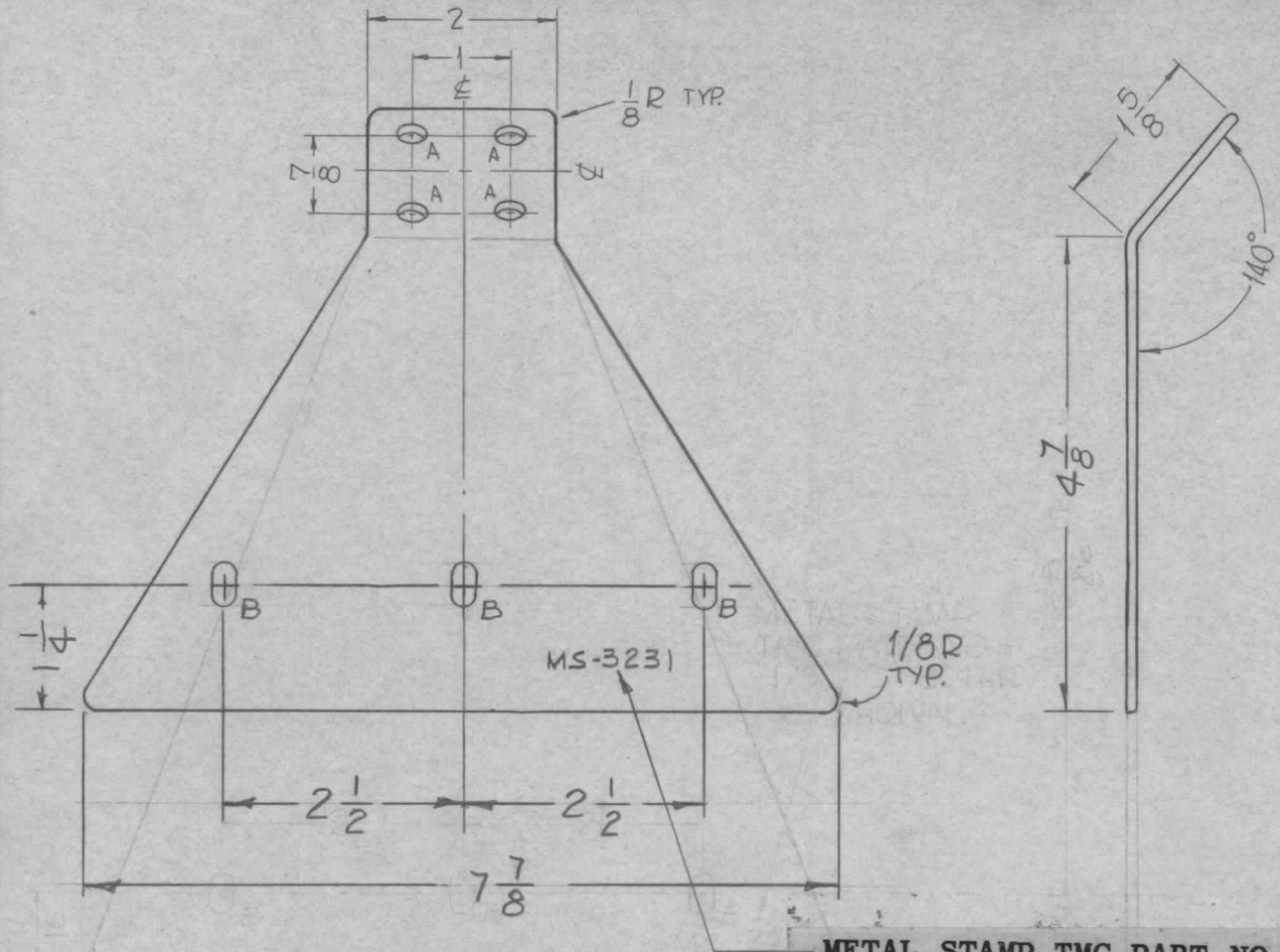
1

GPT-200K

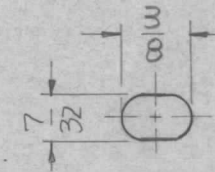
AX-395

4-24-63

MS-3231 0



A ~ 15/64 DIA. (4 REQ.)



B-DETAIL (3 REQ.)

UNLESS OTHERWISE SPECIFIED:

1. USE MATERIAL THICKNESS FOR MAXIMUM RADIUS ON ALL BENDS.
2. ALL ANGULAR BENDS 90°.
3. REMOVE ALL BURRS AND SHARP EDGES.
4. ROUND ALL EDGES 1/16R
5. POLISH BEFORE PLATING

METAL STAMP TMC PART NO. 1/8 HIGH GOTHIC.

REQ.	ITEM	PART NO.	F. BUDETTI			DESCRIPTION	SYMBOL
		1/8 THICK	THE TECHNICAL MATERIEL CORP.				
		STOCK SIZE	MAMARONECK, NEW YORK				
0	ORIGINAL RELEASE	5.16.64	MSB	H. R. COPPER			PLATE, CONDUCTOR
SYM	DESCRIPTION	DATE	CH. NO.	DRAFTS	CHECKER	ENG. APP.	MATERIAL
UNLESS OTHERWISE SPECIFIED DIMENSIONS ARE IN INCHES AND INCLUDE CHEMICALLY APPLIED OR PLATED FINISHES		SCALE		SRG aa RDC			
DECIMALS	TOLERANCES		FRACTIONS	CODE		TYPE & TEMPER	
.X ± .05			± 1/64			S-245 SILVER PLATE, BRIGHT	
.XX ± .01			ANGLES			DRAWN	
.XXX ± .005			± 0° 30'			CHECKED	
						FINAL APPROVAL	
						MS-3231 0	
						ELEC. DES. APP. MECH. DES. APP.	

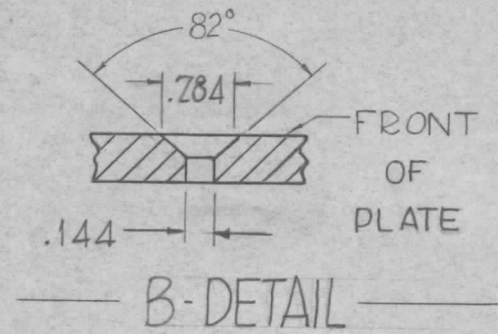
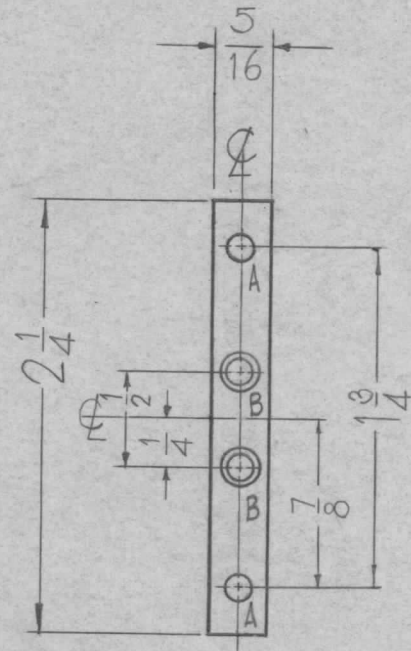


THE CONTENTS OF THIS DRAWING ARE THE EXCLUSIVE PROPERTY OF THE TECHNICAL MATERIEL CORP. ITS UNAUTHORIZED USE OR REPRODUCTION IN WHOLE OR IN PART IS STRICTLY FORBIDDEN.

REQ. PER UNIT	USED ON		
	MODEL	ASS'Y. NO.	DATE
2	GPT 200K	AR-137	8-2-62
2	GPT-200K	AR-138	8-2-62

MS-3258

0



HOLES	REQ.
A - 11/64 DIA.	2
B - SEE DETAIL	2

UNLESS OTHERWISE SPECIFIED DIMENSIONS ARE IN INCHES AND INCLUDE CHEMICALLY APPLIED OR PLATED FINISHES

DECIMALS	FRACTIONS
.X ± .05	± 1/64
.XX ± .01	ANGLES
.XXX ± .005	± 0° 30'

TOLERANCES

CUT HERE GUARANTEED 2-56

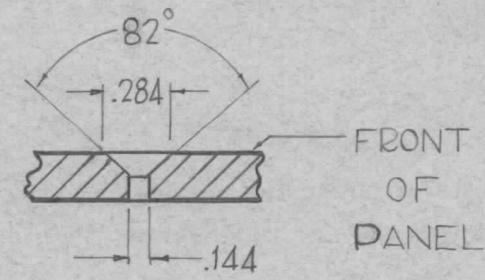
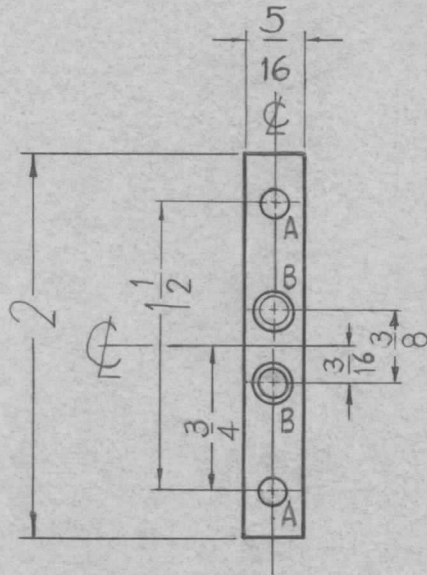
SYM	DESCRIPTION	DATE	CH. NO.	DRAFTS	CHECKER	ENG. APP.	REQ. ITEM	PART NO.	F. BUDETTI	DESCRIPTION	SYMBOL
0	ORIGINAL RELEASE FOR PROD.	4-24-64			SRG			1/8 THICK		THE TECHNICAL MATERIEL CORP. MAMARONECK, NEW YORK	PLATE, RELAY MTG.
A	REDRAWN & REVISED							ALUMINUM			
								MATERIAL			
	UNLESS OTHERWISE SPECIFIED: DIMENSIONS ARE IN INCHES TOLERANCES ON FRAC. ± 1/64 DEC. ± .005 ANGLES ± 1/2°	SCALE: 1"=1"			CODE A		5052-H-32		J.F. VITTO	aa	RJC
							TYPE & TEMPER	HEATTREAT. SPEC.	DRAWN	CHECKED	FINAL APPROVAL
							S-404-IRIDITE 14-2 AL-COAT				MS-3258
							FINISH & SPEC. NO.		ELEC. DES. APP.	MECH. DES. APP.	0



THE CONTENTS OF THIS DRAWING ARE THE EXCLUSIVE PROPERTY OF THE TECHNICAL MATERIEL CORP. ITS UNAUTHORIZED USE OR REPRODUCTION IN WHOLE OR IN PART IS STRICTLY FORBIDDEN.

REQ. PER UNIT	USED ON		
	MODEL	ASS'Y. NO.	DATE
2	GPT 200 K	AR-137	8-2-62
2	GPT 200K	AR-138	8-2-62

MS-3259 0



HOLES                      REQ.  
 A- 11/64 DIA ————— 2  
 B- SEE DETAIL ————— 2

UNLESS OTHERWISE SPECIFIED DIMENSIONS ARE IN INCHES AND INCLUDE CHEMICALLY APPLIED OR PLATED FINISHES	
DECIMALS	FRACTIONS
.X ± .05	± 1/64
.XX ± .01	ANGLES
.XXX ± .005	± 0° 30'

CUT HERE  
 GUARANTEED  
 2-66

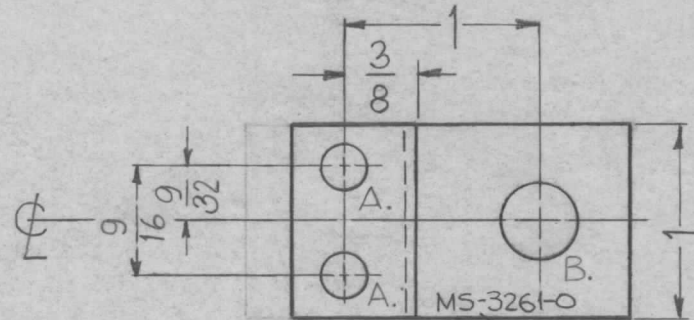
SYM	DESCRIPTION	DATE	CH. NO.	DRAFTS	CHECKER	ENG. APP.	REQ. ITEM	PART NO.	F. BUDETTI	DESCRIPTION	SYMBOL
							1/8 THICK			THE TECHNICAL MATERIEL CORP. MAMARONECK, NEW YORK PLATE, RELAY MTG. #	
O	ORIGINAL RELEASE FOR PROD.	4-24-64			SRG		STOCK SIZE				
A	REDRAWN & REVISED						ALUMINUM				
							MATERIAL				
							5052-H32		J.F. VITRO	aa	Rse
UNLESS OTHERWISE SPECIFIED: DIMENSIONS ARE IN INCHES TOLERANCES ON		SCALE: 1"=1"		CODE A		TYPE & TEMPER		HEAT TREAT. SPEC.	DRAWN	CHECKED	FINAL APPROVAL
FRAC. ± 1/64 DEC. ± .005 ANGLES ± 1/2°		MAXIMUM ALLOWABLE TOLERANCES HAVE BEEN DETERMINED AND ANY DEVIATIONS WILL BE CAUSE FOR REJECTION. REMOVE ALL BURRS AND SHARP EDGES				S404-IRIDITE 14-2-AL COAT			DBLB	aa 2/1/64	MS-3259 0
						FINISH & SPEC. NO.		ELEC. DES. APP.	MECH. DES. APP.		

THE CONTENTS OF THIS DRAWING ARE THE EXCLUSIVE PROPERTY OF THE TECHNICAL MATERIEL CORP. ITS UNAUTHORIZED USE OR REPRODUCTION IN WHOLE OR IN PART IS STRICTLY FORBIDDEN.

REQ. PER UNIT	USED ON		
	MODEL	ASS'Y. NO.	DATE
4	GDT 200K	AD-137	8-2-62
4	GDT-200K	AD-138	8-2-62
1	GPT-200K	AX-398	8-2-62

MS-3261

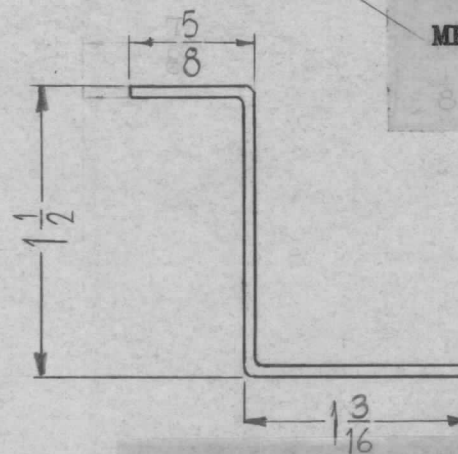
⊙



METAL STAMP TMC PART NO. 1/8 HIGH GOTHIC.

UNLESS OTHERWISE SPECIFIED:

1. USE MATERIAL THICKNESS FOR MAXIMUM RADIUS ON ALL BENDS.
2. ALL ANGULAR BENDS 90°.
3. REMOVE ALL BURRS AND SHARP EDGES.



HOLES	REQ.
A. 13/64 DIA.	2
B. 3/8 DIA.	1

UNLESS OTHERWISE SPECIFIED DIMENSIONS ARE IN INCHES AND INCLUDE CHEMICALLY APPLIED OR PLATED FINISHES

DECIMALS	FRACTIONS
.X ± .05	± 1/64
.XX ± .01	ANGLES
.XXX ± .005	± 0° 30'

TOLERANCES

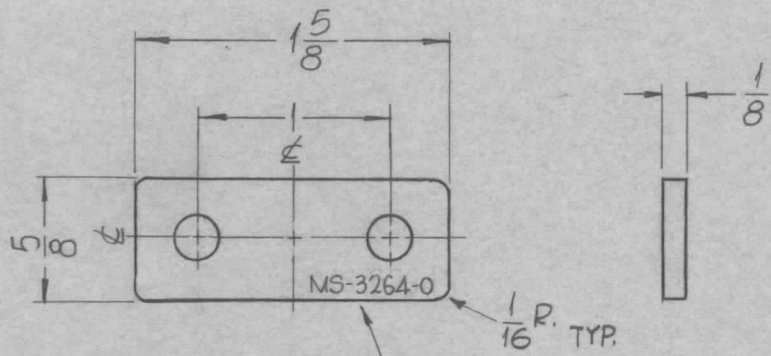
CUT HERE GUARANTEED 2-66

REQ.	ITEM	PART NO.	F. BUDETTI	DESCRIPTION	SYMBOL	
		.064 THICK		THE TECHNICAL MATERIEL CORP.		
		STOCK SIZE		MAMARONECK, NEW YORK		
		ALUM.		BRACKET, INSULATOR MTG.		
⊙	ORIGINAL RELEASE FOR PRODUCTION	3-264	AM.			
SYM	DESCRIPTION	DATE	CH. NO.	DRAFTS	CHECKER	ENG. APP.
	UNLESS OTHERWISE SPECIFIED: DIMENSIONS ARE IN INCHES TOLERANCES ON	SCALE: 1:1				
	FRAC. ± 1/64 DEC. ± .005 ANGLES ± 1/2°	MAXIMUM ALLOWABLE TOLERANCES HAVE BEEN DETERMINED AND ANY DEVIATIONS WILL BE CAUSE FOR REJECTION. REMOVE ALL BURRS AND SHARP EDGES				
		5052-H-32	JF. VITRO	QC/S	Roe	
		SA04-IRIDITE 14-2 ALCOAT	TYPE & TEMPER	CHECKED	FINAL APPROVAL	
		FINISH & SPEC. NO.	ELEC. DES. APP.	MECH. DES. APP.	MS-3261	⊙

THE CONTENTS OF THIS DRAWING ARE THE EXCLUSIVE PROPERTY OF THE TECHNICAL MATERIEL CORP. ITS UNAUTHORIZED USE FOR REPRODUCTION IN WHOLE OR IN PART IS STRICTLY FORBIDDEN.

REQ. PER UNIT	USED ON		
	MODEL	ASS'Y. NO.	DATE
2	GPT-200K	AX-396	2-5-63

MS-3264 ○



METAL STAMP TMC  
PART NO. 1/8 HIGH  
GOTHIC AS SHOWN.

HOLES:  
7/32 DIA. (2 REQ.)

UNLESS OTHERWISE SPECIFIED  
DIMENSIONS ARE IN INCHES AND INCLUDE  
CHEMICALLY APPLIED OR PLATED FINISHES

DECIMALS	TOLERANCES	FRACTIONS
.X ± .05		± 1/64
.XX ± .01		ANGLES
.XXX ± .005		± 0° 30'

CUT HERE  
GUARANTEED  
2-66

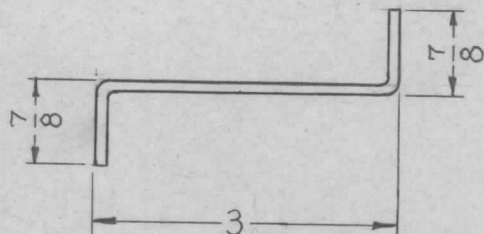
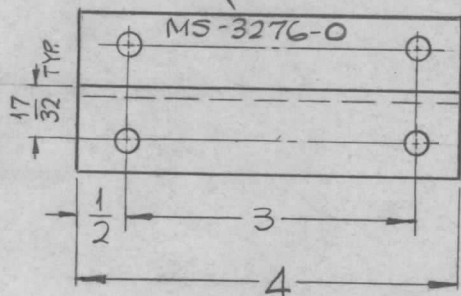
				REQ. ITEM	PART NO.	F. BUDETTI	DESCRIPTION	SYMBOL
				1/8 THICK		THE TECHNICAL MATERIEL CORP.		
				STOCK SIZE		MAMARONECK. NEW YORK		
				COPPER		PLATE, JUMPER ELECTRICAL		
				MATERIAL		HV BREAKER		
UNLESS OTHERWISE SPECIFIED DIMENSIONS ARE IN INCHES AND INCLUDE CHEMICALLY APPLIED OR PLATED FINISHES				SCALE	SRG		QC/B	RDL 4-7-64
				#	TYPE & TEMPER		CHECKED	FINAL APPROVAL
					HEAT TREAT. SPEC.			
DECIMALS				CODE	CHROME PLATED		MS-3264 ○	
.X ± .05				A	FINISH & SPEC. NO.		ELEC. DES. APP. MECH. DES. APP.	
.XX ± .01								
TOLERANCES								
FRACTIONS								
± 1/64								
ANGLES								
± 0° 30'								



REQ. PER UNIT	USED ON			MS-3276 ○
	MODEL	ASS'Y. NO.	DATE	
2	TR-179	A-3143	2-25-64	

METAL STAMP TMC PART NO.  
1/8 HIGH GOTHIC.

HOLES:  
7/32 DIA. (4REQ.)

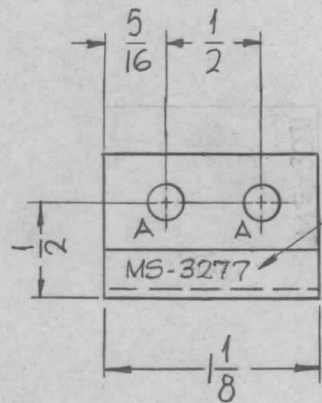


UNLESS OTHERWISE SPECIFIED:

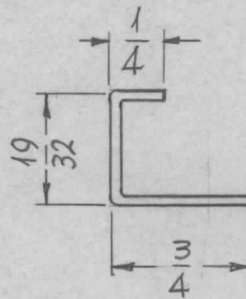
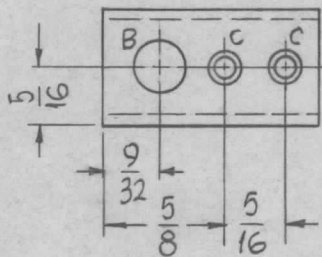
1. USE MATERIAL THICKNESS FOR MAXIMUM RADIUS ON ALL BENDS.
2. ALL ANGULAR BENDS 90°.
3. REMOVE ALL BURRS AND SHARP EDGES.

SYM	DESCRIPTION	DATE	CH. NO.	DRAFTS	CHECKER	ENG. APP.	REQ. ITEM	PART NO.	F. BUDETTI	DESCRIPTION	SYMBOL	
○	ORIGINAL RELEASE FOR PRODUCTION	4-6-64	2				1/8 THICK STOCK SIZE		THE TECHNICAL MATERIEL CORP. MAMARONECK, NEW YORK			
○	RE-DESIGNED & REDRAWN	2-25-64	1				ALUMINUM		BRACKET, XFMR MTG.			
UNLESS OTHERWISE SPECIFIED DIMENSIONS ARE IN INCHES AND INCLUDE CHEMICALLY APPLIED OR PLATED FINISHES							5052-H32		SRG	aa	RJC	
SCALE 1/2" = 1"							TYPE & TEMPER 5404 YELLOW IRIDITE		HEAT TREAT. SPEC. — A		FINAL APPROVAL	
TOLERANCES DECIMALS .X ± .05 .XX ± .01 .XXX ± .005 FRACTIONS ± 1/64 ANGLES ± 0° 30'							FINISH & SPEC. NO.		DRAWN RB		MECH. DES. APP. MS-3276 ○	
									ELEC. DES. APP.			

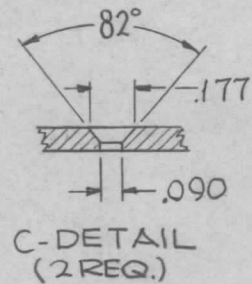
REQ. PER UNIT	USED ON			MS-3277	O
	MODEL	ASS'Y. NO.	DATE		
1	GPT-200K(AT-105)	A-2766	3-18-64		
1	GPT-200K(AT-105)	A-2765	3-18-64		



METAL STAMP TMC PART NO.  
1/8 HIGH GOTHIC.



HOLES -  
A - 3/16 DIA. (2 REQ.)  
B - 1/4 DIA. (1 REQ.)  
C - SEE DETAIL



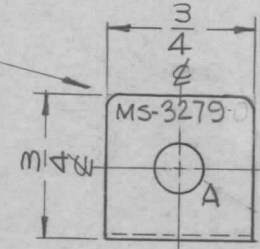
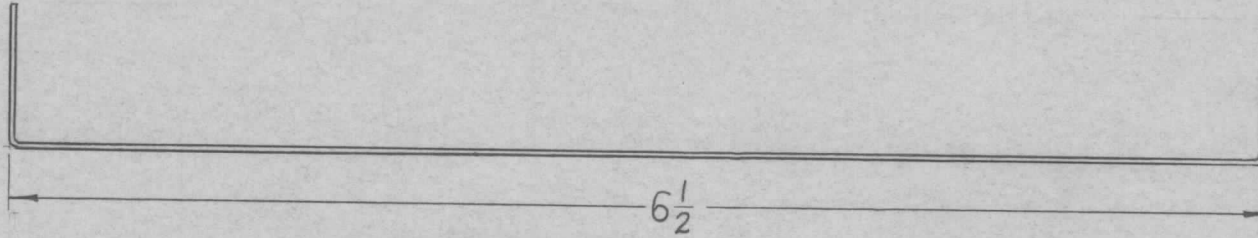
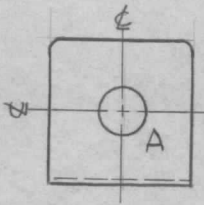
- UNLESS OTHERWISE SPECIFIED:
1. USE MATERIAL THICKNESS FOR MAXIMUM RADIUS ON ALL BENDS.
  2. ALL ANGULAR BENDS 90°.
  3. REMOVE ALL BURRS AND SHARP EDGES

SYM	DESCRIPTION	DATE	CH. NO.	DRAFTS	CHECKER	ENG. APP.	REQ. ITEM	PART NO.	F. BUDETTI	DESCRIPTION	SYMBOL
							.062 THICK			THE TECHNICAL MATERIEL CORP. MAMARONECK, NEW YORK	
							STOCK SIZE				
O	ORIGINAL RELEASE FOR PRODUCTION	4/27/64					ALUMINUM			BRACKET, PANEL MOUNTING	
	UNLESS OTHERWISE SPECIFIED DIMENSIONS ARE IN INCHES AND INCLUDE CHEMICALLY APPLIED OR PLATED FINISHES	SCALE	1" = 1"				5052 H-32		SRG	aa	RJC
							TYPE & TEMPER	HEAT TREAT. SPEC.	DRAWN	CHECKED	FINAL APPROVAL
	DECIMALS .X ± .05 .XX ± .01 .XXX ± .005	FRACTIONS ± 1/64 ANGLES ± 0° 30'	CODE A				5-404 YELLOW IRIDITE				MS-3277 O
	TOLERANCES						FINISH & SPEC. NO.		ELEC. DES. APP.	MECH. DES. APP.	

HOLES:  
A-15/64 DIA. (2REQ.)

REQ. PER UNIT	USED ON			MS-3279 Ø
	MODEL	ASS'Y. NO.	DATE	
4	GPT-200K	AX-392	9-23-63	

METAL STAMP TMC PART NO.  
1/8 HIGH GOTHIC.  
WITH LATEST REVISION LETTER



UNLESS OTHERWISE SPECIFIED:


1. USE MATERIAL THICKNESS FOR MAXIMUM RADIUS ON ALL BENDS.
2. ALL ANGULAR BENDS 90°.
3. REMOVE ALL BURRS AND SHARP EDGES.

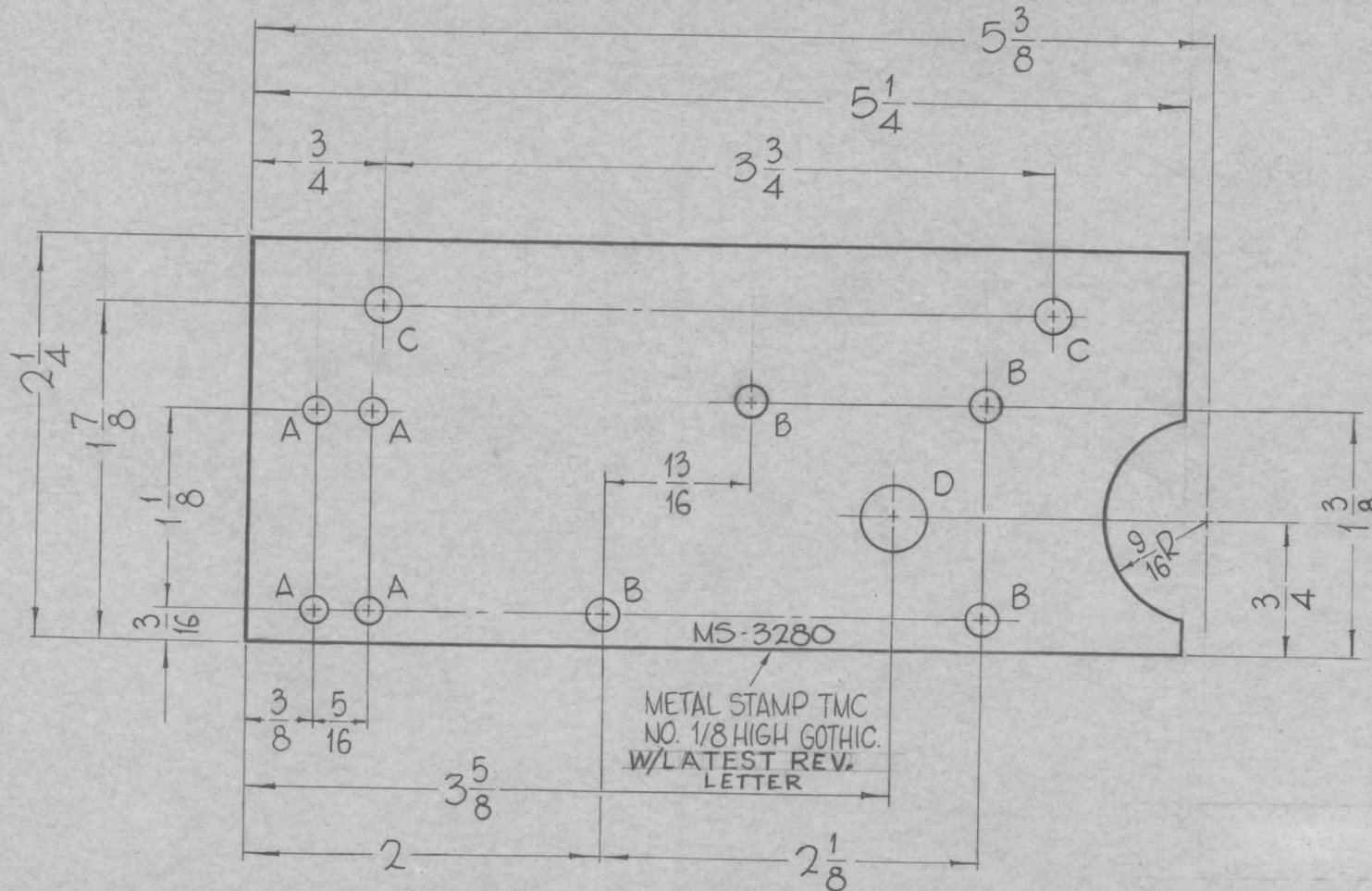
						REQ. ITEM	PART NO.	F. BUDETTI	DESCRIPTION	SYMBOL
							.030 THICK		THE TECHNICAL MATERIEL CORP. MAMARONECK, NEW YORK	
							STOCK SIZE			
○	ORIGINAL RELEASE FOR PRODUCTION	5/21/64	0	A.M.			COPPER		STRAP, CONNECTOR, ELECTRICAL	
SYM	DESCRIPTION	DATE	CH. NO.	DRAFTS	CHECKER	ENG. APP.	MATERIAL			
UNLESS OTHERWISE SPECIFIED DIMENSIONS ARE IN INCHES AND INCLUDE CHEMICALLY APPLIED OR PLATED FINISHES		SCALE								
		1" = 1"								
DECIMALS	FRACTIONS	CODE								
.X ± .05	± 1/64	A								
.XX ± .01	ANGLES									
.XXX ± .005	± 0° 30'									
TOLERANCES		TYPE & TEMPER		HEAT TREAT. SPEC.		DRAWN		CHECKED		FINAL APPROVAL
		S245 SILVER PLATE				SRG		aa gcb		MS-3279 Ø
		FINISH & SPEC. NO.		ELEC. DES. APP.		MECH. DES. APP.				



THE CONTENTS OF THIS DRAWING ARE THE EXCLUSIVE PROPERTY OF THE TECHNICAL MATERIEL CORP. ITS UNAUTHORIZED USE FOR REPRODUCTION IN WHOLE OR IN PART IS STRICTLY FORBIDDEN.

REQ. PER UNIT	USED ON		
	MODEL	ASS'Y. NO.	DATE
1	GPT-200K-AX-393	A-2756-1	5-20-63
1	GPT-200K-AX-393	A-2756-2	10-16-63


MS-3280 



HOLES

A - 9/64 DIA.	4 REQ.
B - 11/64 DIA.	4 REQ.
C - 3/16 DIA.	2 REQ.
D - 3/8 DIA.	1 REQ.

REF - TMC NO. LD-1358, LD-1359

SYM	DESCRIPTION	DATE	CH. NO.	DRAFTS	CHECKER	ENG. APP.	REQ. ITEM	PART NO.	F. BUDETTI	DESCRIPTION	SYMBOL	
O	ORIGINAL RELEASE FOR PRODUCTION	5-13-64	O	A.M.			.081 THICK STOCK SIZE		THE TECHNICAL MATERIEL CORP. MAMARONECK, NEW YORK			
X1	"B" HOLE ADDED	10-9-63					ALUMINUM		PLATE, THERMOSTAT MTG.			
UNLESS OTHERWISE SPECIFIED DIMENSIONS ARE IN INCHES AND INCLUDE CHEMICALLY APPLIED OR PLATED FINISHES							MATERIAL					
SCALE							5052-4-32		John C. Biele	OO	RJC	
DECIMALS .X ± .05 .XX ± .01 .XXX ± .005							TYPE & TEMPER S404-IRIDITE 14-2-ALCOAT		HEAT TREAT. SPEC. DRAWN		CHECKED FINAL APPROVAL	
FRACTIONS ± 1/64 ANGLES ± 0° 30'							FINISH & SPEC. NO.		ELEC. DES. APP. MECH. DES. APP.		MS-3280 	
TOLERANCES							CODE A					

THE CONTENTS OF THIS DRAWING ARE THE EXCLUSIVE PROPERTY OF THE TECHNICAL MATERIEL CORP. ITS UNAUTHORIZED USE FOR REPRODUCTION IN WHOLE OR IN PART IS STRICTLY FORBIDDEN.

REQ. PER UNIT  
2

MODEL  
GPT-200K

USED ON

ASS'Y. NO.  
AX-393

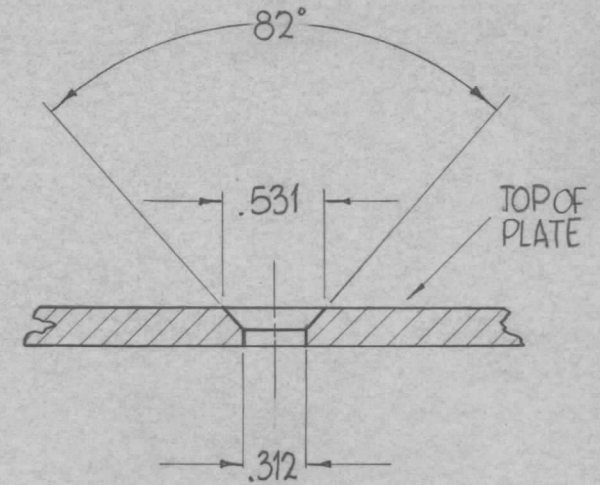
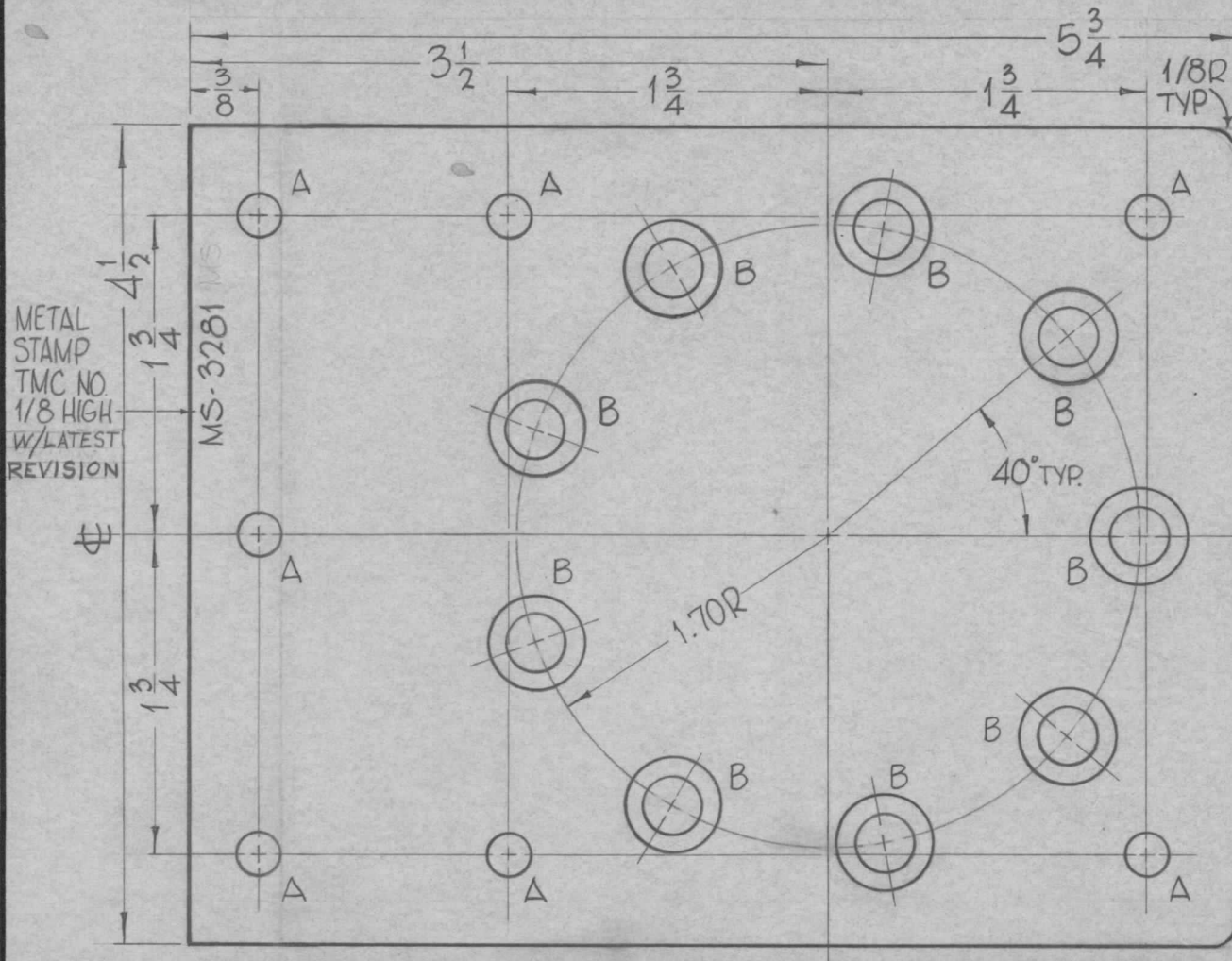
DATE

5-20-63

MS-3281

0

NOTE: ROUND ALL EDGES 1/32 R



"B" DETAIL

9 REQ.

HOLES

A - 15/64 DIA

7 REQ.

B - SEE DETAIL

REF. TMC DWG'S. LD-1259, LD-1260

REQ.	ITEM	PART NO.	F. BUDETTI		DESCRIPTION	SYMBOL
		3/16 THICK			THE TECHNICAL MATERIEL CORP. MAMARONECK, NEW YORK	PLATE, CAPACITOR MTG.
		STOCK SIZE				
		ALUMINUM				
		MATERIAL				
		5052-H-32	John C. Biele		aa	RDC
		TYPE & TEMPER	HEAT TREAT. SPEC.	DRAWN	CHECKED	FINAL APPROVAL
		S-404-IRIDITE 14-2 ALCOAT		203	12/17/63	MS-3281 0
		FINISH & SPEC. NO.	ELEC. DES. APP.	MECH. DES. APP.		

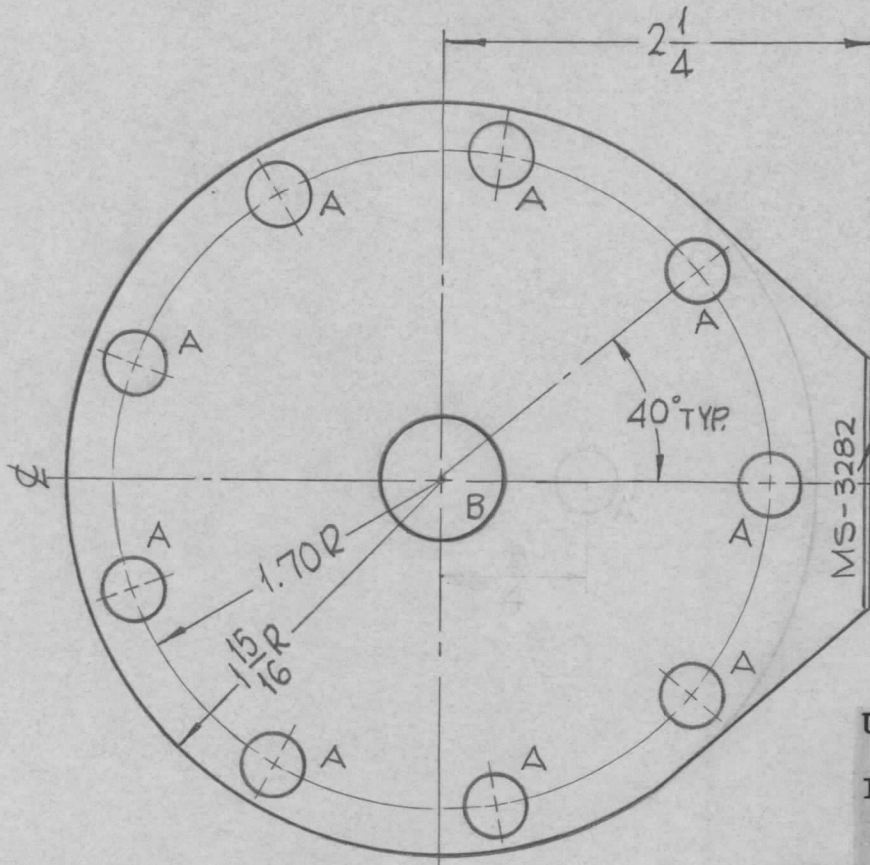
SYM	DESCRIPTION	DATE	CH. NO.	DRAFTS	CHECKER	ENG. APP.
0	ORIGINAL RELEASE FOR PRODUCTION	5-13-64	0	A.M.		
X1	1/32 R NOTE ADDED	10-16-63				

UNLESS OTHERWISE SPECIFIED DIMENSIONS ARE IN INCHES AND INCLUDE CHEMICALLY APPLIED OR PLATED FINISHES		SCALE
DECIMALS	FRACTIONS	CODE
.X ± .05	± 1/64	A
.XX ± .01	ANGLES	
.XXX ± .005	± 0° 30'	



REQ. PER UNIT	USED ON			MS-3282 ○
	MODEL	ASS'Y. NO.	DATE	
2	GPT-200K	AX-393	4-20-64	



METAL STAMP TMC  
 PART NO. 1/8  
 HIGH GOTHIC  
 W/LATEST REVISION LETTER

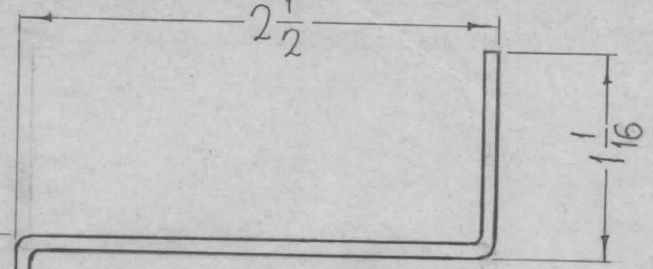
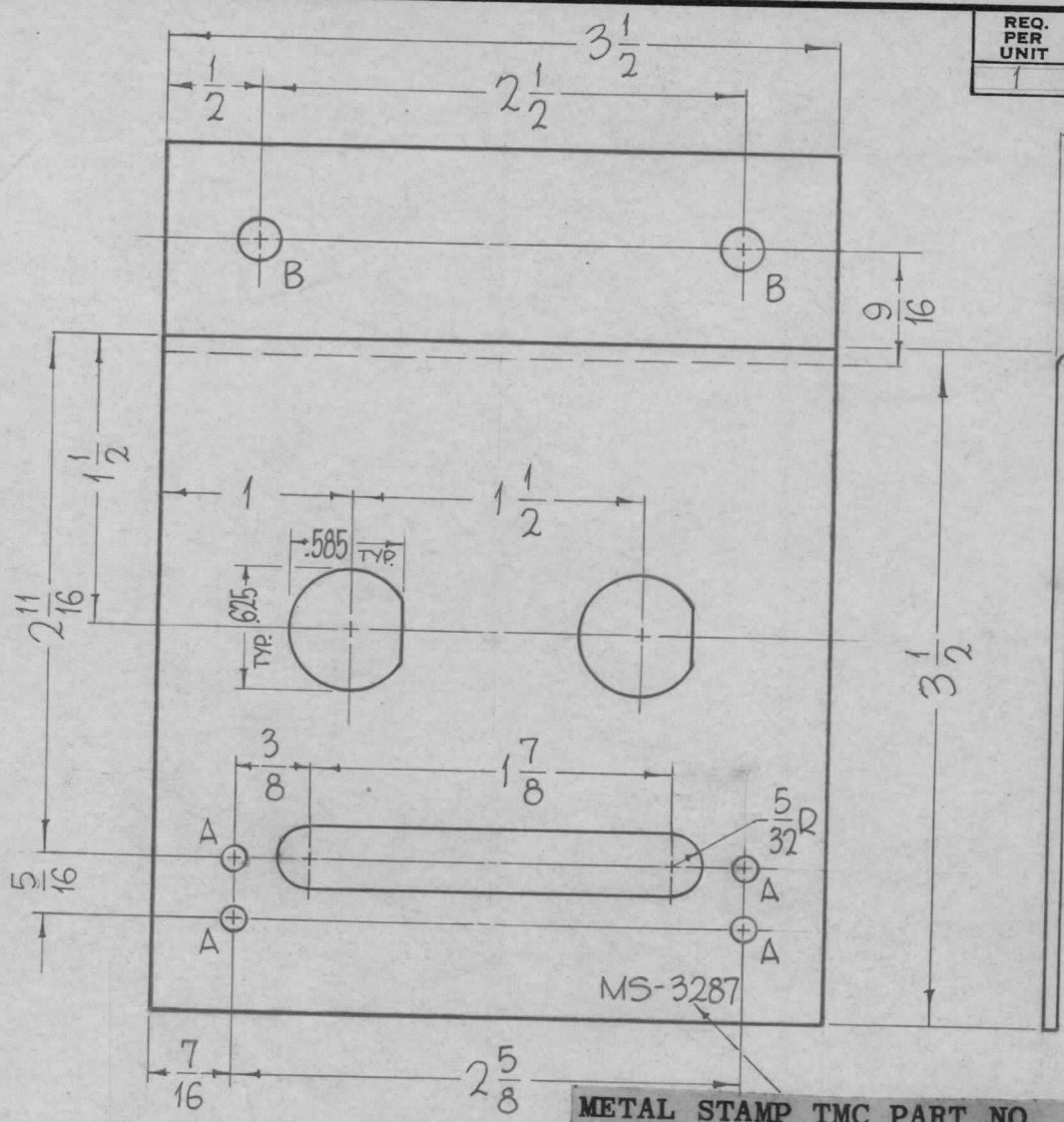
HOLES: REQ.  
 A-5/16 DIA-9  
 B-5/8 DIA-1  
 C-3/8 DIA-1

- UNLESS OTHERWISE SPECIFIED:
1. USE MATERIAL THICKNESS FOR MAXIMUM RADIUS ON ALL BENDS.
  2. ALL ANGULAR BENDS 90°.
  3. REMOVE ALL BURRS AND SHARP EDGES.

SYM	DESCRIPTION	DATE	CH. NO.	DRAFTS	CHECKER	ENG. APP.	REQ. ITEM	PART NO.	F. BUDETTI DESCRIPTION	SYMBOL	
							.030 THICK		THE TECHNICAL MATERIEL CORP. MAMARONECK, NEW YORK		
							STOCK SIZE				
○	ORIGINAL RELEASE FOR PRODUCTION	5-13-64	○	A.M.			COPPER		PLATE, CONNECTOR, CAPACITOR		
							MATERIAL				
UNLESS OTHERWISE SPECIFIED DIMENSIONS ARE IN INCHES AND INCLUDE CHEMICALLY APPLIED OR PLATED FINISHES							SCALE				
							1"=1"				
DECIMALS .X ± .05 .XX ± .01 .XXX ± .005							TOLERANCES				
FRACTIONS ± 1/64 ANGLES ± 0° 30'							CODE				
							A				
							SOFT	HEAT TREAT. SPEC.	DRAWN	CHECKED	FINAL APPROVAL
							S-245 SILVER PLATE		SRG	aa	RSC
							FINISH & SPEC. NO.	ELEC. DES. APP.	MECH. DES. APP.	MS-3282 ○	



REQ. PER UNIT	USED ON			MS-3287 O
	MODEL	ASS'Y. NO.	DATE	
1	GPT-40KAP-118	A-3482	10-2-63	



HOLES	REQ.
A - 1/8 DIA.	4
B - 15/64 DIA.	2

**UNLESS OTHERWISE SPECIFIED:**

1. USE MATERIAL THICKNESS FOR MAXIMUM RADIUS ON ALL BENDS.
2. ALL ANGULAR BENDS 90°.
3. REMOVE ALL BURRS AND SHARP EDGES.

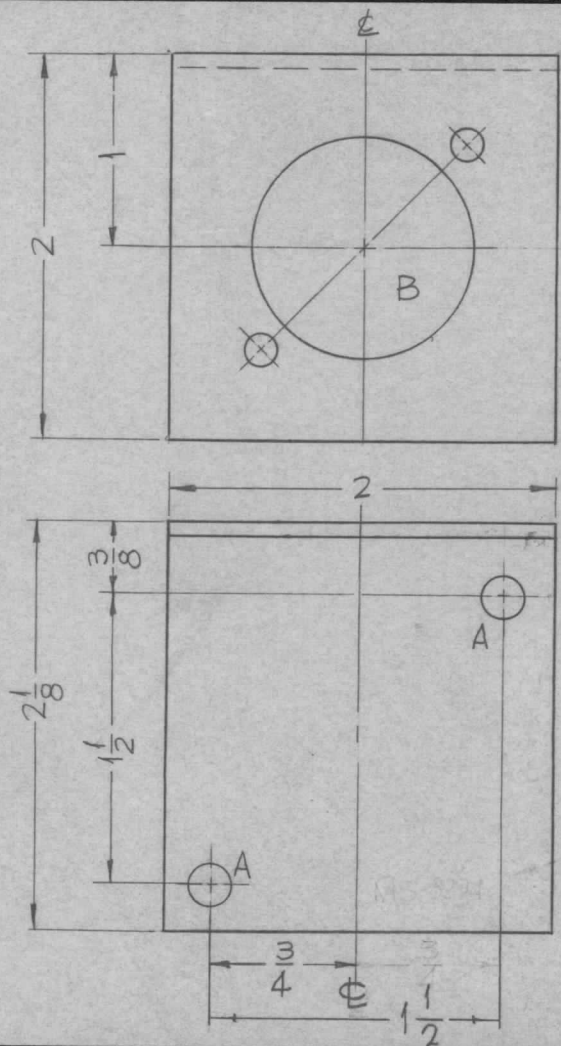
METAL STAMP TMC PART NO. 1/8 HIGH GOTHIC. W/LATEST REV. REF. TMC DWG. LD-1247

REQ. ITEM	PART NO.	F. BUDETTI	DESCRIPTION	SYMBOL
	.081 THICK	THE TECHNICAL MATERIEL CORP. MAMARONECK. NEW YORK		
	STOCK SIZE	BRACKET, COMPONENT MTG.		
	ALUMINUM			
SYM	DESCRIPTION	DATE	CH. NO.	DRAFTS
O	ORIGINAL RELEASE FOR PRODUCTION	5/27/64	O	A.M.
	UNLESS OTHERWISE SPECIFIED DIMENSIONS ARE IN INCHES AND INCLUDE CHEMICALLY APPLIED OR PLATED FINISHES	SCALE	1" = 1"	
	DECIMALS .X ± .05 .XX ± .01 .XXX ± .005	FRACTIONS ± 1/64 ANGLES ± 0° 30'	CODE	A
	5052, H-32	TYPE & TEMPER	HEAT TREAT. SPEC.	S404-IRIDITE, 14-2 AL. COAT
	FINISH & SPEC. NO.	ELEC. DES. APP.	MECH. DES. APP.	MS-3287 O

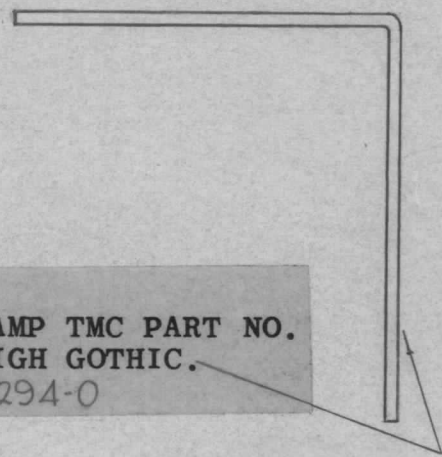
THE CONTENTS OF THIS DRAWING ARE THE EXCLUSIVE PROPERTY OF THE TECHNICAL MATERIEL CORP. ITS UNAUTHORIZED USE FOR REPRODUCTION IN WHOLE OR IN PART IS STRICTLY FORBIDDEN.

REQ. PER UNIT	USED ON		
	MODEL	ASS'Y. NO.	DATE
1	GPT-200K(AK-392)	A-3159	6-28-63

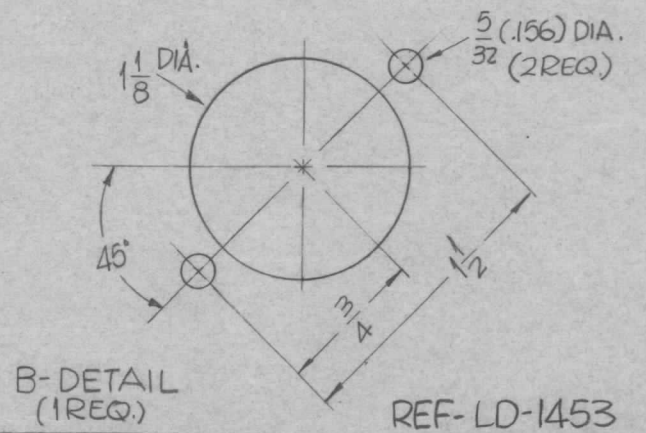
MS-3294 0



METAL STAMP TMC PART NO. 1/8 HIGH GOTHIC. MS-3294-0



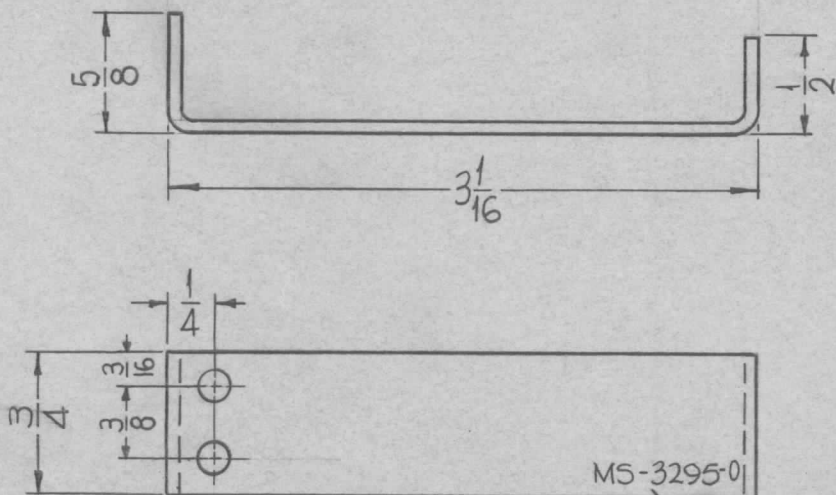
HOLES:  
 A-13/64 (.203) DIA. — 2REQ.  
 B- SEE DETAIL



- UNLESS OTHERWISE SPECIFIED:
1. USE MATERIAL THICKNESS FOR MAXIMUM RADIUS ON ALL BENDS.
  2. ALL ANGULAR BENDS 90°.
  3. REMOVE ALL BURRS AND SHARP EDGES.

SYM	DESCRIPTION	DATE	CH. NO.	DRAFTS	CHECKER	ENG. APP.	REQ. ITEM	PART NO.	F. BUDETTI	DESCRIPTION	SYMBOL
							.081 THICK			THE TECHNICAL MATERIEL CORP. MAMARONECK, NEW YORK	
							STOCK SIZE				
							ALUMINUM			BRACKET, MTG. METERING CIRCUIT	
							MATERIAL				
							5052-H32		SRG	QA PCB	KOL 4-7-64
							TYPE & TEMPER	HEAT TREAT. SPEC.	DRAWN	CHECKED	FINAL APPROVAL
							S-404 YELLOW IRIDITE		QA PCB	2/1/64	MS-3294 0
							FINISH & SPEC. NO.		ELEC. DES. APP.	MECH. DES. APP.	

REQ. PER UNIT	USED ON			MS-3295	0
	MODEL	ASS'Y. NO.	DATE		
1	GPT-200K	AR-137	4-16-64		
1	GPT-200K	AR-138	4-16-64		



HOLES:  
5/32 DIA. ——— 2REQ.

- UNLESS OTHERWISE SPECIFIED:
1. USE MATERIAL THICKNESS FOR MAXIMUM RADIUS ON ALL BENDS.
  2. ALL ANGULAR BENDS 90°.
  3. REMOVE ALL BURRS AND SHARP EDGES.

METAL STAMP TMC PART NO. 1/8 HIGH GOTHIC

REQ.	ITEM	PART NO.	F. BUDETTI				DESCRIPTION	SYMBOL
		.081 THICK	THE TECHNICAL MATERIEL CORP.					
		STOCK SIZE	MAMARONECK, NEW YORK					
0	ORIGINAL RELEASE FOR PROD.	4-23-64	SRG	BRACKET, INTERLOCK STOP				
X2	3/4 WAS 7/8	4-17-64						
SYM	DESCRIPTION	DATE	CH. NO.	DRAFTS	CHECKER	ENG. APP.		
UNLESS OTHERWISE SPECIFIED DIMENSIONS ARE IN INCHES AND INCLUDE CHEMICALLY APPLIED OR PLATED FINISHES		SCALE	1"=1"					
		5052-H32	TYPE & TEMPER		HEAT TREAT. SPEC.	DRAWN	CHECKED	FINAL APPROVAL
DECIMALS .X ± .05 .XX ± .01 .XXX ± .005		TOLERANCES		FRACTIONS ± 1/64 ANGLES ± 0° 30'		CODE	A	
		S-404 YELLOW IRIDITE	FINISH & SPEC. NO.		ELEC. DES. APP.	MECH. DES. APP.	MS-3295	0

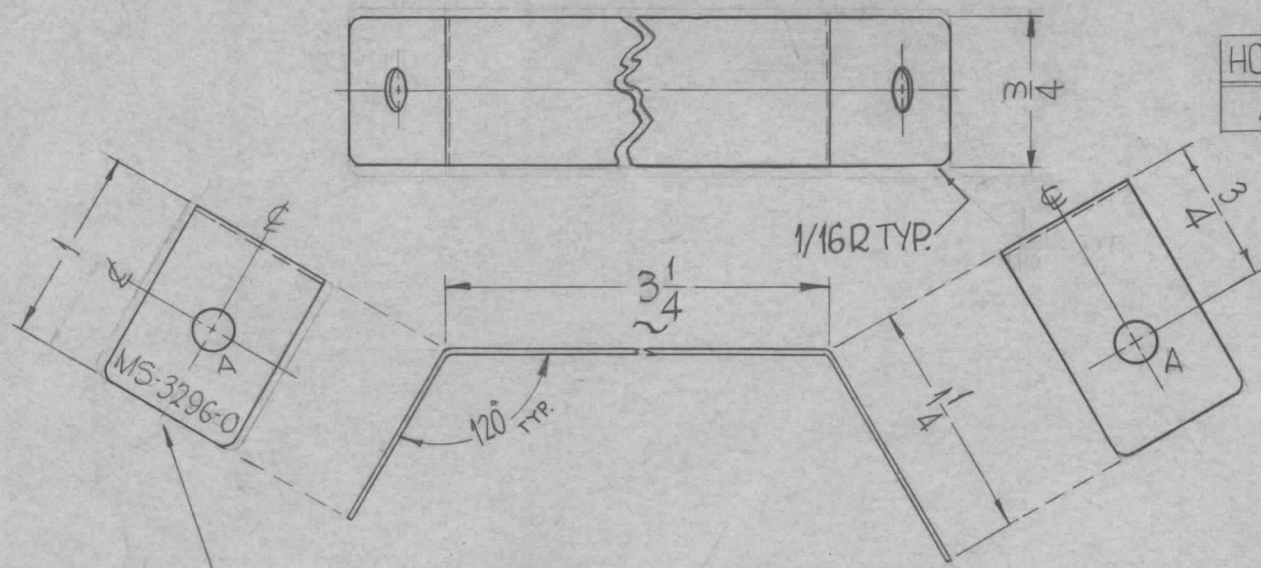


THE CONTENTS OF THIS DRAWING ARE THE EXCLUSIVE PROPERTY OF THE TECHNICAL MATERIEL CORP. ITS UNAUTHORIZED USE FOR REPRODUCTION IN WHOLE OR IN PART IS STRICTLY FORBIDDEN.

REQ. PER UNIT	USED ON		
	MODEL	ASS'Y. NO.	DATE
1	GPT-200K	A-3159	6-25-63

MS-3296 0

4  
AX-392



HOLE	DESCRIPTION	REQ.
A	15/64 DIA.	2

METAL STAMP TMC PART NO. 1/8 HIGH GOTHIC AS SHOWN.

REQ.	ITEM	PART NO.	F. BUDETTI	DESCRIPTION	SYMBOL
		.019 THICK		THE TECHNICAL MATERIEL CORP.	
		STOCK SIZE		MAMARONECK, NEW YORK	
		COPPER		STRAP, CONNECTING	
		MATERIAL			
		SOFT	SRG	aa gcb	RTC 4-7-64
		TYPE & TEMPER		CHECKED	FINAL APPROVAL
		HEAT TREAT. SPEC.			
		5245 SILVER PLATE			MS-3296 0
		FINISH & SPEC. NO.		ELEC. DES. APP.	MECH. DES. APP.

UNLESS OTHERWISE SPECIFIED DIMENSIONS ARE IN INCHES AND INCLUDE CHEMICALLY APPLIED OR PLATED FINISHES

SCALE 1" = 1"

DECIMALS  
.X ± .05  
.XX ± .01  
.XXX ± .005

FRACTIONS  
± 1/64  
ANGLES  
± 0° 30'

TOLERANCES

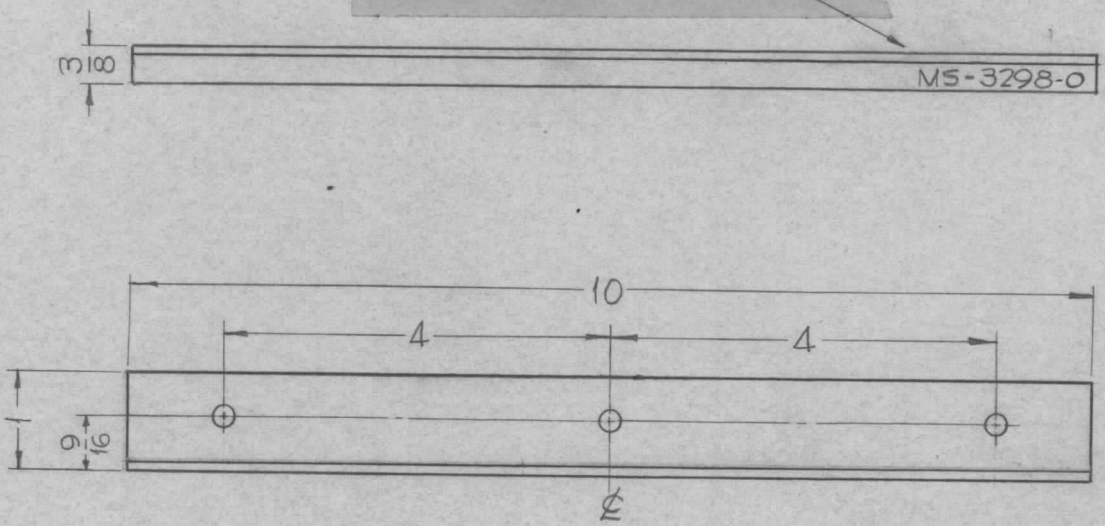
CODE  
A

THE CONTENTS OF THIS DRAWING ARE THE EXCLUSIVE PROPERTY OF THE TECHNICAL MATERIEL CORP. ITS UNAUTHORIZED USE FOR REPRODUCTION IN WHOLE OR IN PART IS STRICTLY FORBIDDEN.

REQ. PER UNIT	USED ON		
	MODEL	ASS'Y. NO.	DATE
1	GPT-200K(A-X-392)	A-3159	7-1-63

MS-3298 0

METAL STAMP TMC PART NO. 1/8 HIGH GOTHIC.



HOLES:  
13/64 DIA. (3REQ.)

- UNLESS OTHERWISE SPECIFIED:
1. USE MATERIAL THICKNESS FOR MAXIMUM RADIUS ON ALL BENDS.
  2. ALL ANGULAR BENDS 90°.
  3. REMOVE ALL BURRS AND SHARP EDGES.

REQ. ITEM	PART NO.	F. BUDETTI	DESCRIPTION	SYMBOL
	.081 THICK		THE TECHNICAL MATERIEL CORP.	
	STOCK SIZE		MAMARONECK, NEW YORK	
	ALUMINUM		BRACKET, XFMR SUPPORT	
	MATERIAL			
	5052-H32	SRG	aa 803 RJC	4-7-64
	TYPE & TEMPER	HEAT TREAT. SPEC.	DRAWN	CHECKED
	S-404 YELLOW IRIDITE		DBR	MS-3298 0
	FINISH & SPEC. NO.	ELEC. DES. APP.	MECH. DES. APP.	

UNLESS OTHERWISE SPECIFIED DIMENSIONS ARE IN INCHES AND INCLUDE CHEMICALLY APPLIED OR PLATED FINISHES

SCALE 1/2

DECIMALS: .X ± .05, .XX ± .01, .XXX ± .005

FRACTIONS: ± 1/64, ANGLES: ± 0° 30'

TOLERANCES

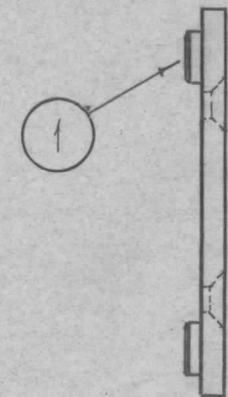
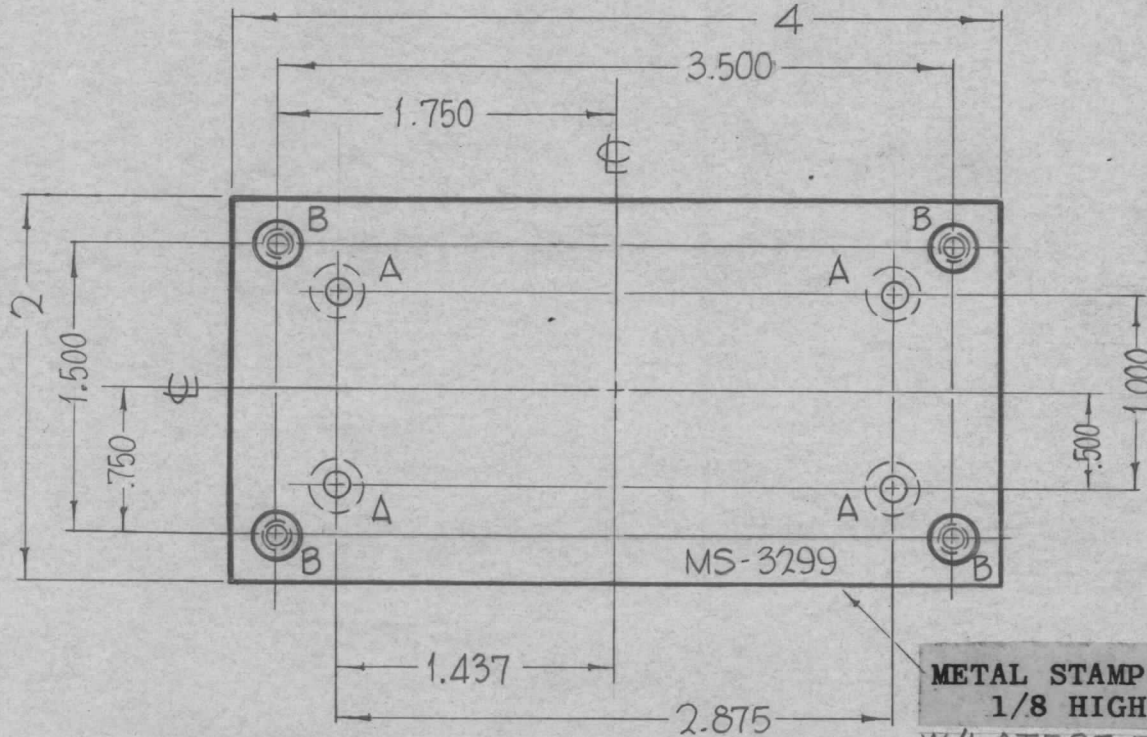
CODE A



THE CONTENTS OF THIS DRAWING ARE THE EXCLUSIVE PROPERTY OF THE TECHNICAL MATERIEL CORP. ITS UNAUTHORIZED USE FOR REPRODUCTION IN WHOLE OR IN PART IS STRICTLY FORBIDDEN.

REQ. PER UNIT	USED ON			MS-3299	O
	MODEL	ASS'Y. NO.	DATE		
1	GPT-200K	AT-105	7-2-63		

HOLES REQ.  
 A-DRILL & C'SK 6-32 4  
 FHS FROM REAR.  
 B-.221 MIN., .224 MAX. DIAS 4  
 FOR MFG NT-129-832-6  
 (ITEM NO. 1)



MS-3299

METAL STAMP TMC PART NO. 1/8 HIGH GOTHIC. W/LATEST REVISION

UNLESS OTHERWISE SPECIFIED:  
 REMOVE ALL BURRS AND SHARP EDGES.  
 MOUNT INSERTS AFTER FINISHING.

4	1	NT-129-832-6	NUT, ROUND, SWAGE TYPE	
REQ.	ITEM	PART NO.	F. BUDETTI	DESCRIPTION
				SYMBOL
		1/8 THICK	THE TECHNICAL MATERIEL CORP.	
		STOCK SIZE	MAMARONECK, NEW YORK	
		ALUMINUM	PLATE, CONNECTOR MTG.	
		MATERIAL		
		5052, H-32	John C. Biele	aa
		TYPE & TEMPER	DRAWN	CHECKED
		HEAT TREAT. SPEC.		
		S404 IRIDIUM, 14-2 AL. COAT	12/17/63	MS-3299
		FINISH & SPEC. NO.	ELEC. DES. APP.	MECH. DES. APP.

UNLESS OTHERWISE SPECIFIED DIMENSIONS ARE IN INCHES AND INCLUDE CHEMICALLY APPLIED OR PLATED FINISHES		SCALE	1" = 1"		
DECIMALS	FRACTIONS	CODE			
.X ± .05	± 1/64	A			
.XX ± .01	ANGLES				
.XXX ± .005	± 0° 30'				