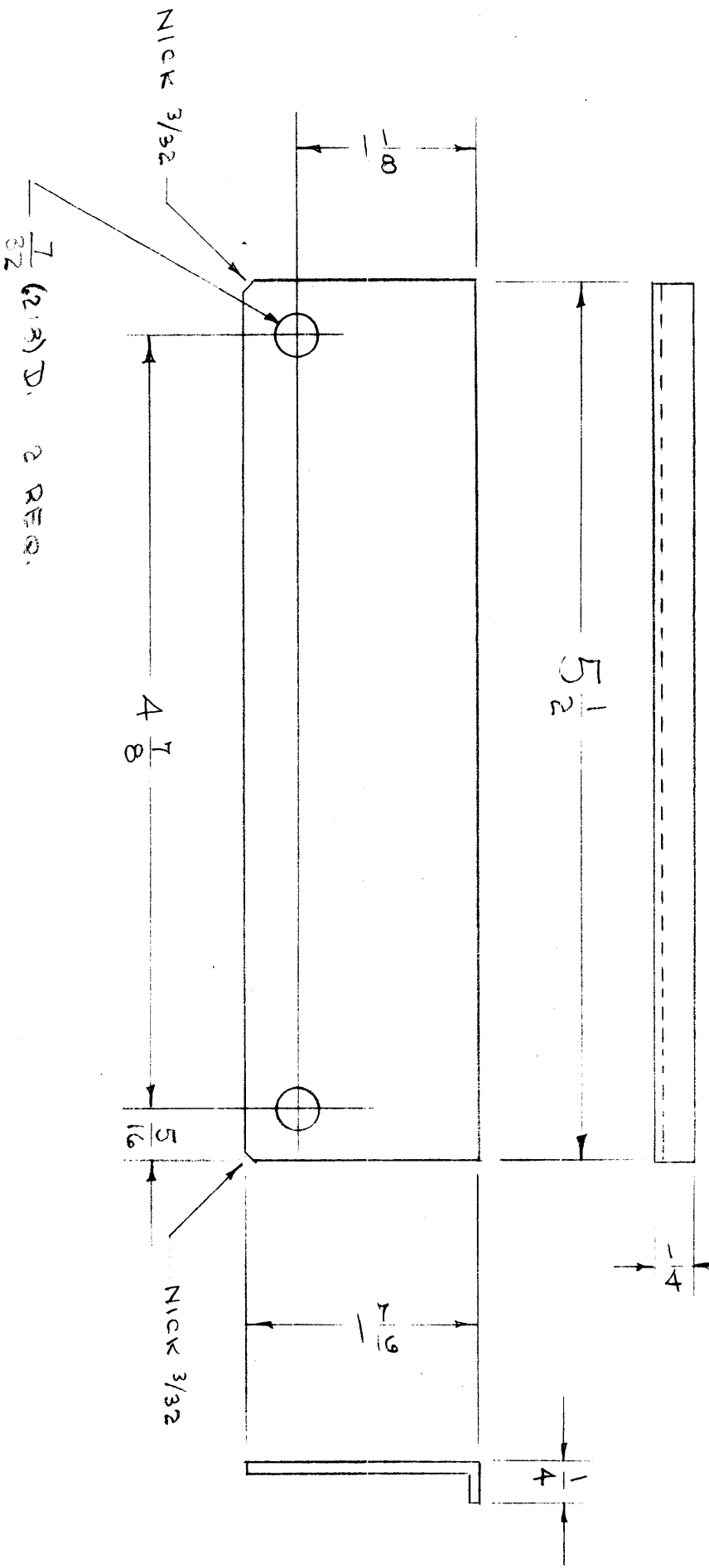


IF IT IS FOUND DESIRABLE TO CHANGE ANY TOLERANCE OR OTHER DETAIL SPECIFIED ON THIS DRAWING NOTIFY THE PURCHASER PROMPTLY.
 MAXIMUM ALLOWABLE TOLERANCES HAVE BEEN DETERMINED AND DEVIATIONS WILL BE CAUSE FOR REJECTION. REMOVE ALL BURRS AND SHARP EDGES

MS-407 A



NOTICE TO PERSONS RECEIVING THIS DRAWING

THE TECHNICAL MATERIEL CORPORATION claims proprietary right in the material disclosed hereon. This drawing is issued in confidence for engineering information only and may not be reproduced or used to manufacture anything shown hereon without permission from THE TECHNICAL MATERIEL CORPORATION to the user. This drawing is loaned for mutual assistance and is subject to recall at any time.

Property of:
THE TECHNICAL MATERIEL CORPORATION
 MAMARONECK, NEW YORK

| | | | | | | |
|---|-----------------|---------|---------|--------|---------|-----------|
| ISSUE ITEM | CHANGED FROM | DATE | CN. NO. | DRAFTS | CHECKER | ENG. APP. |
| A | S-404 WAS S-101 | 2/11/53 | 1001 | MS | | EMN |
| TOLERANCES | | | | | | |
| SCALE: 1/4" = 1" | | | | | | |
| DRILL, PUNCH, COMMERCIAL STOCK SIZES AND MANUFACTURERS TOLERANCES ARE NOT INCLUDED. | | | | | | |

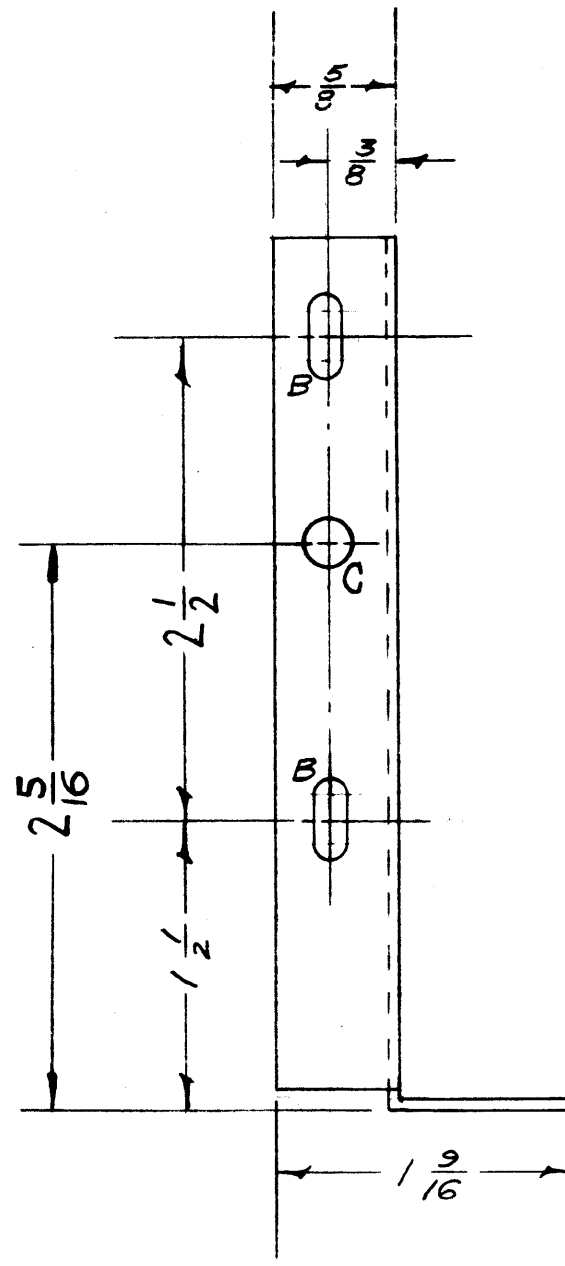
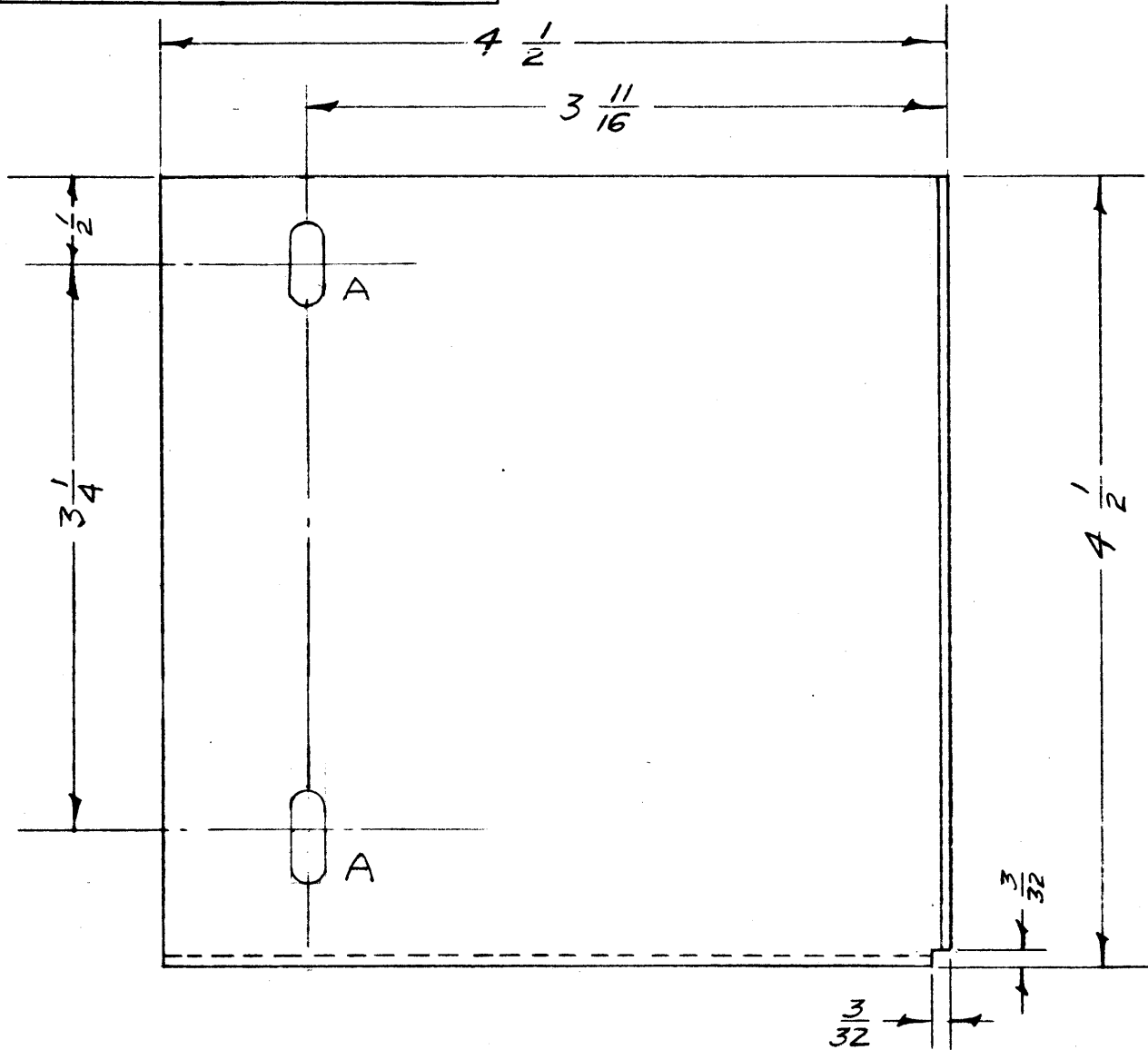
| | | |
|-------------|--------------|----------------|
| DEC. DIM. ± | FRAC. DIM. ± | ANGULAR DIM. ± |
| | 1/64 | |
| AMT. USED | 1 | |
| MODEL | XEK | |
| PROJECT NO. | 242 | |
| ABST. NO. | A-684, Pg. 1 | |
| DATE | 10-5-53 | |

| | | | |
|----------------------|----------------|---------------------|--------|
| REQ. ITEM | PART NO. | DESCRIPTION | SYMBOL |
| .081 | | TRANSFORMER BRACKET | |
| STOCK SIZE | | | |
| ALUMINUM | | | |
| MATERIAL | WEIGHT PER PC. | | |
| 5052 - H32 | | | |
| TYPE & TEMPER | | | |
| H | | | |
| HEAT TREAT. SPEC. | | | |
| S-404 YELLOW IRIDITE | | | |
| FINISH & SPEC. NO. | | | |
| | | DRAWN | |
| | | CHECKED | |
| | | ELEC. DES. APP. | |
| | | MECH. DES. APP. | |
| | | FINAL APPROVAL | |

IF IT IS FOUND DESIRABLE TO CHANGE ANY TOLERANCE OR OTHER DETAIL SPECIFIED ON THIS DRAWING NOTIFY THE PURCHASER PROMPTLY.

MAXIMUM ALLOWABLE TOLERANCES HAVE BEEN DETERMINED AND DEVIATIONS WILL BE CAUSE FOR REJECTION. REMOVE ALL BURRS AND SHARP EDGES

MS-408 D

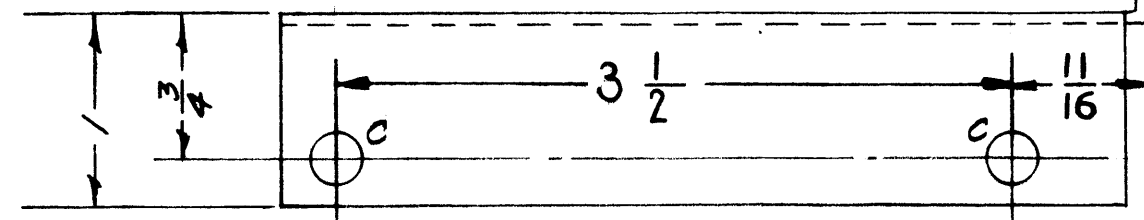


LEGEND
 A = $\frac{1}{64} \times \frac{1}{32}$ SLOT 2 REQ'D.
 B = $\frac{3}{16} \times \frac{1}{4}$ SLOT 2 REQ'D.
 C = $\frac{9}{32}$ (.281) D. 3 REQ'D.

NOTICE TO PERSONS RECEIVING THIS DRAWING

THE TECHNICAL MATERIEL CORPORATION claims proprietary right in the material disclosed hereon. This drawing is issued in confidence for engineering information only and may not be reproduced or used to manufacture anything shown hereon without permission from THE TECHNICAL MATERIEL CORPORATION to the user. This drawing is loaned for mutual assistance and is subject to recall at any time.

Property of:
 THE TECHNICAL MATERIEL CORPORATION
 MAMARONECK, NEW YORK



| | | | | | | | |
|---|---|---------------------------|----------|------|----|-----|-----|
| D | 1 | Hole Added (Side Lip) | 21-51 | 4044 | RU | WLS | SM |
| C | 1 | S-404 WAS S-101 | 12/11/54 | 1001 | AB | W | EMN |
| B | 1 | "A" SLOTS TURNED 90° | 1/21/54 | 2 | SC | W | W |
| A | 1 | "C" HOLE MOVED (WAS LONG) | 1/23/54 | 1 | W | W | W |

| ISSUE | ITEM | CHANGED FROM | DATE | CN. NO. | DRAFTS | CHECKER | ENG. APP. |
|------------|----------------|---|------|---------|--------|---------|-----------|
| TOLERANCES | | SCALE: ff | | | | | |
| ALL OTHERS | DEC. DIM. ± | DRILL, PUNCH, COMMERCIAL STOCK SIZES AND MANUFACTURERS TOLERANCES ARE NOT INCLUDED. | | | | | |
| | FRAC. DIM. ± | | | | | | |
| | ANGULAR DIM. ± | | | | | | |

| | | | | |
|----------|-------|-------------|--------------------|---------|
| 1 | XFK | 242 | A-684 (Pg. 1 of 3) | 10-5-52 |
| Per UNIT | MODEL | PROJECT NO. | ASS'Y. NO. | DATE |

| REQ. ITEM | PART NO. | DESCRIPTION | SYMBOL |
|----------------------|----------------|------------------------------|----------------------|
| .064 | | THE TECHNICAL MATERIEL CORP. | |
| STOCK SIZE | | MAMARONECK. NEW YORK | |
| ALUMINUM | ff | TRANSFORMER BRACKET, | |
| MATERIAL | WEIGHT PER PC. | FRONT | |
| 5052 - H32 | | 16 10-5-53 | A.J.J. |
| TYPE & TEMPER | ff | DRAWN | ELEC. DE. APP. MECH. |
| HEAT TREAT. SPEC. | | CHECKED | FINAL APPROVAL |
| 5-404 YELLOW IRIDITE | | | |
| FINI H & SPEC. NO. | | | |

MS-408 D



NOTICE TO PERSONS RECEIVING THIS DRAWING

THE TECHNICAL MATERIEL CORPORATION claims proprietary right in the material disclosed hereon. This drawing is issued in confidence for engineering information only and may not be reproduced or used to manufacture anything shown hereon without permission from THE TECHNICAL MATERIEL CORPORATION to the user. This drawing is loaned for mutual assistance and is subject to recall at any time.

Property of:
THE TECHNICAL MATERIEL CORPORATION
MAMARONECK, NEW YORK

ALL HOLES $\frac{11}{64}d$ - 10 REQ'D
ALL HOLES $\frac{7}{32}$ FROM EDGE

USE: 20 GA 24 ST. ALUM
TWO PER UNIT
FINISH: ALKALI ETCH & LACQUER

HAT SIZE: $7\frac{15}{16} \times 16\frac{15}{16}$

| | |
|------------------------------------|------------|
| COVER PLATE | |
| TONE TERMINAL TRANSMIT UNIT | |
| TKM-TC | |
| THE TECHNICAL MATERIEL CORPORATION | |
| MAMARONECK, NEW YORK | |
| DATE. JAN 19, 1951 | CHKD. LB |
| DRAWN. P.B. | APPD. hu |
| SHEET OF | No. MS-418 |

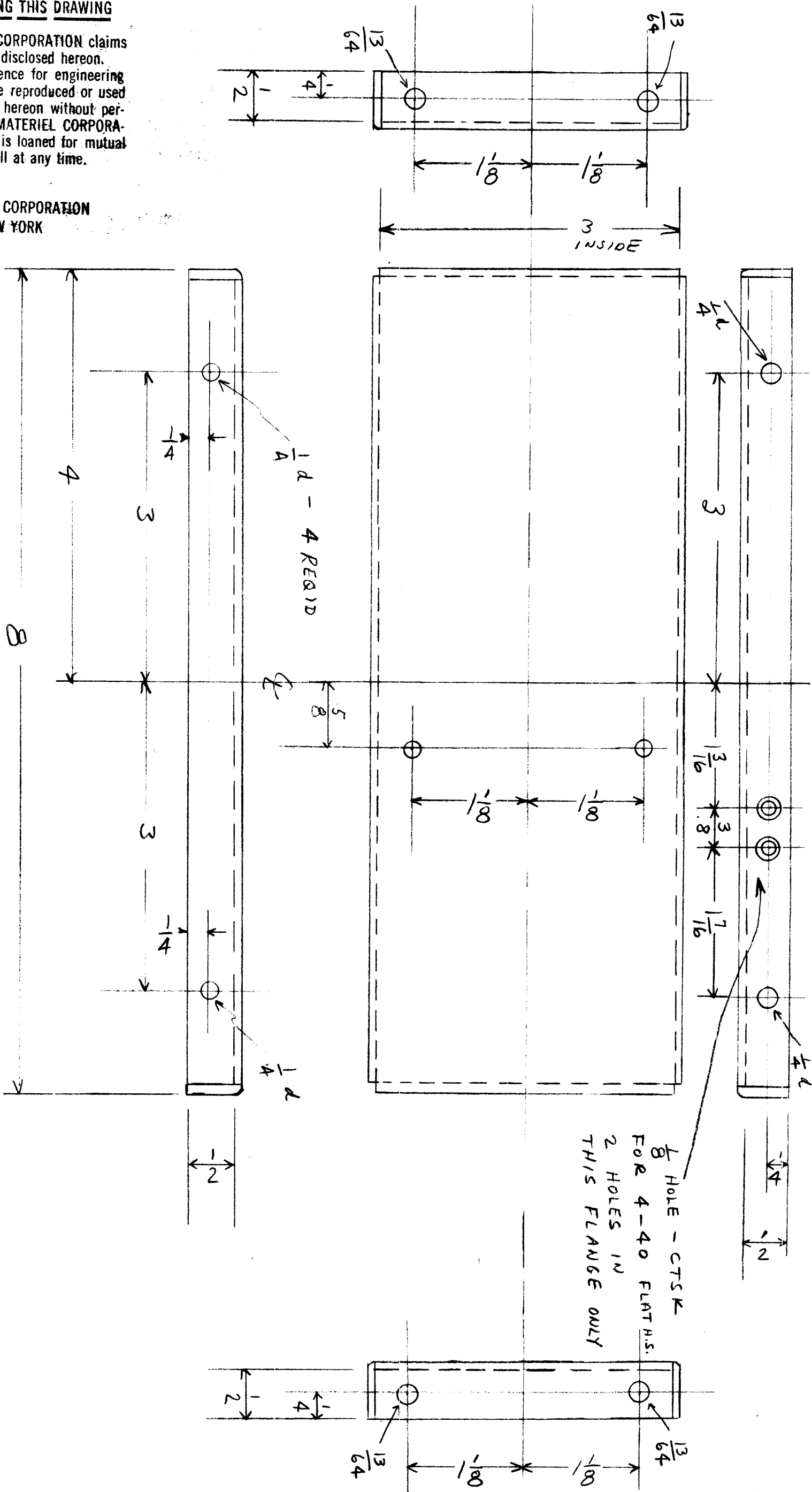
WAS BMS011
1/26/54

NOTICE TO PERSONS RECEIVING THIS DRAWING

THE TECHNICAL MATERIEL CORPORATION claims proprietary right in the material disclosed hereon. This drawing is issued in confidence for engineering information only and may not be reproduced or used to manufacture anything shown hereon without permission from THE TECHNICAL MATERIEL CORPORATION to the user. This drawing is loaned for mutual assistance and is subject to recall at any time.

Property of:

THE TECHNICAL MATERIEL CORPORATION
MAMARONECK, NEW YORK



TWO PER UNIT
USE: 16 GA 1/4 HARD ALUM.
FINISH: ALKALI ETCH & LACAUER
MATERIAL SIZE 4 X 8 29/32

OUTSIDE
AFTER BENDING

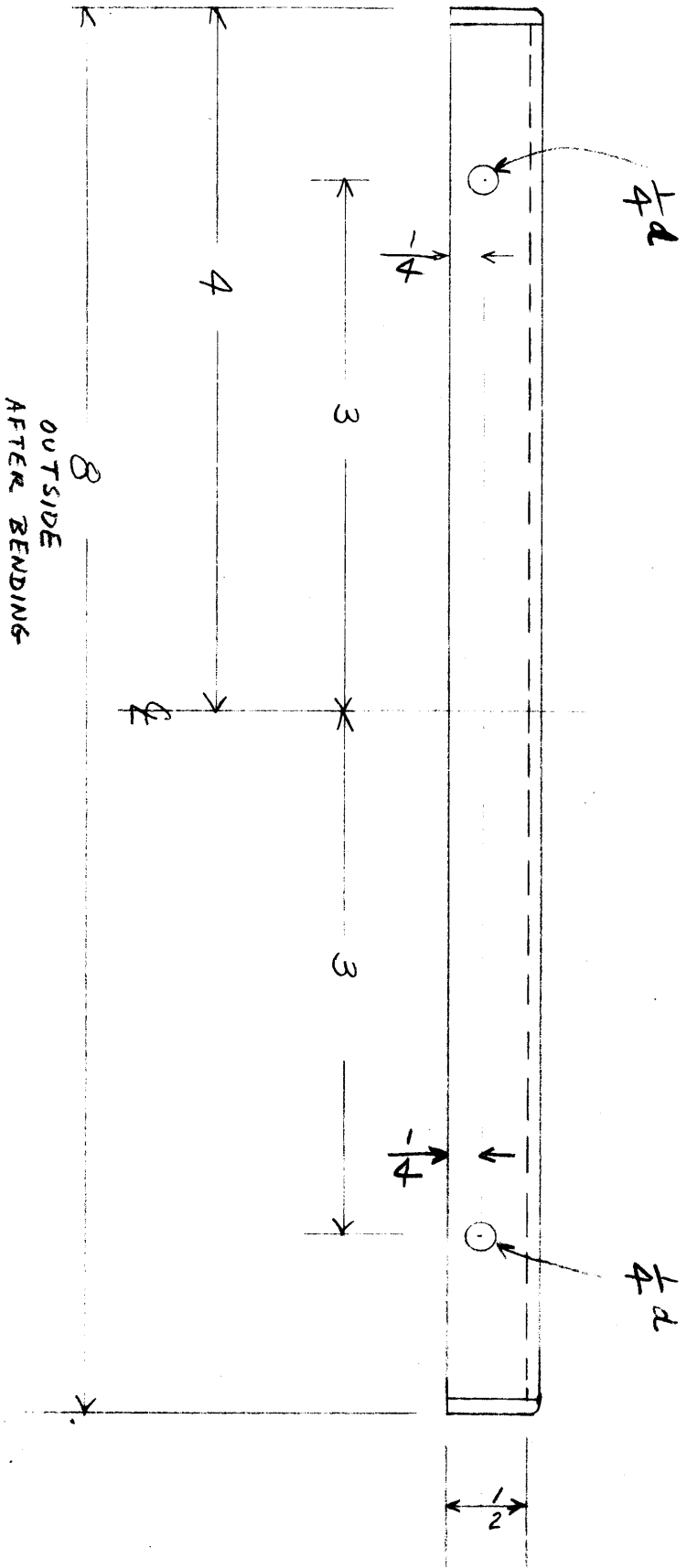
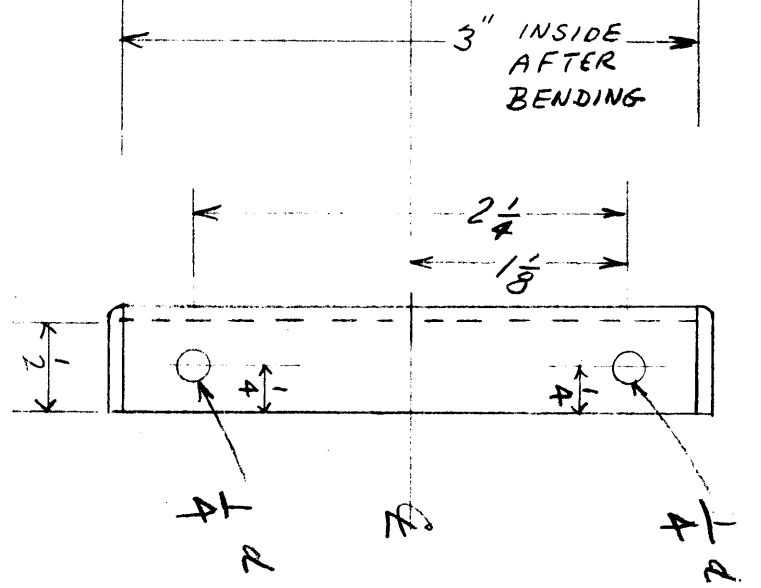
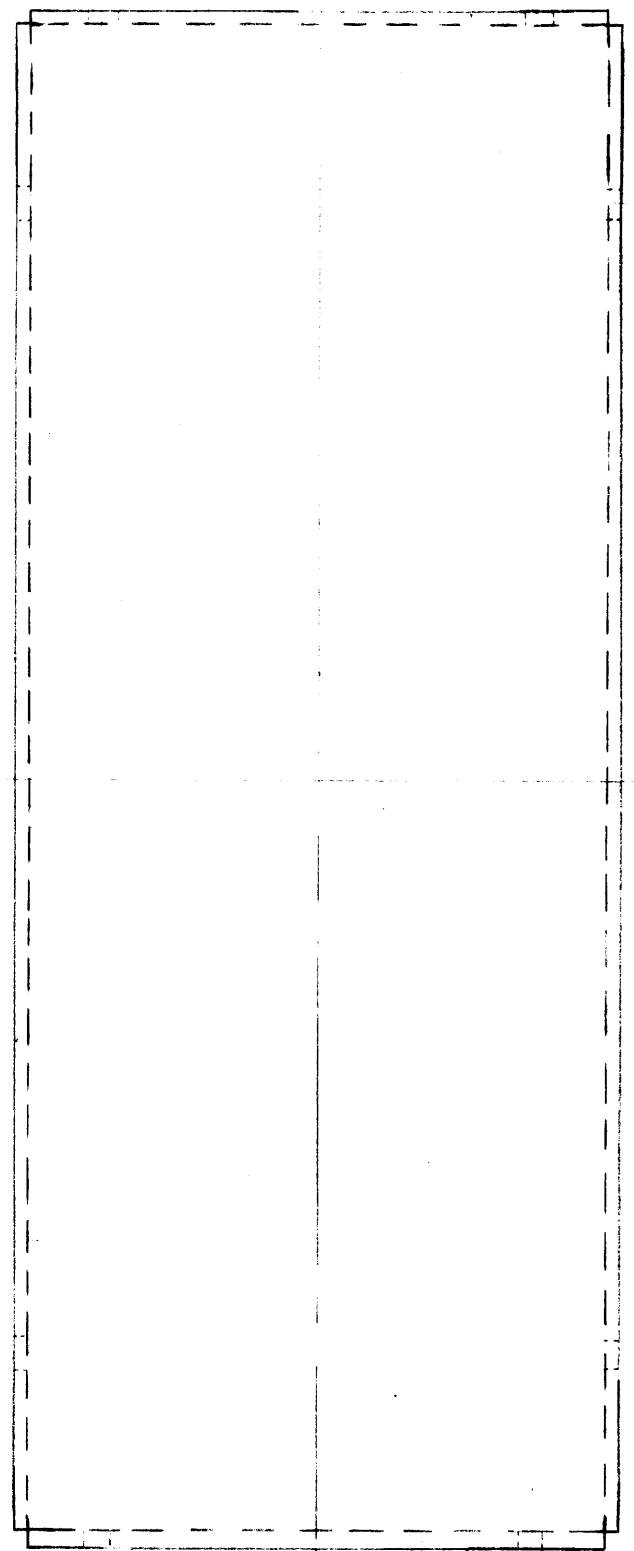
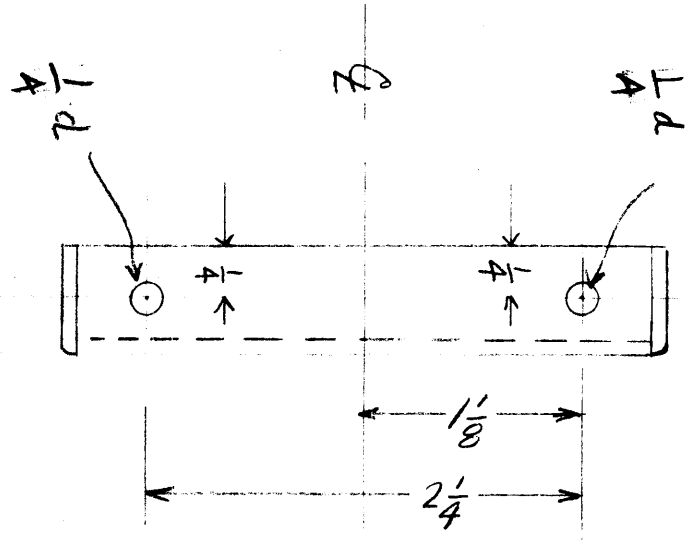
| | |
|--|-----------------|
| SIDE CHASSIS ELEMENT TONE TERMINAL TRANSMIT TRM-TC | |
| THE TECHNICAL MATERIEL CORPORATION MAMARONECK, NEW YORK | |
| DATE: JAN 15, 1951 | CHKD. RB |
| DRAWN: R.B. | APPD. <i>ML</i> |
| SHEET OF | NO. 145-419 |

WAS BMSO10
V26/54

NOTICE TO PERSONS RECEIVING THIS DRAWING

THE TECHNICAL MATERIEL CORPORATION claims proprietary right in the material disclosed hereon. This drawing is issued in confidence for engineering information only and may not be reproduced or used to manufacture anything shown hereon without permission from THE TECHNICAL MATERIEL CORPORATION to the user. This drawing is loaned for mutual assistance and is subject to recall at any time.

Property of:
THE TECHNICAL MATERIEL CORPORATION
 MAMARONECK, NEW YORK



TWO PER UNIT
 USE: 16 GA $1/4$ HARD ALUM
 FINISH: ALKALI ETCH & LACQUER FINISH
 MAT SIZE $4" \times 8\frac{29}{32}$

WAS BMS006 1/27/54
TKM-RC
 TONE TERMINAL RECEIVER
 SIDE CHASSIS ELEMENT
 SCALE: FULL
 DRAWN: P.B.
 APPROVED: *fm*
 JAN. 15, 1951
 DWG No: MS-425
 CHKD R.B.

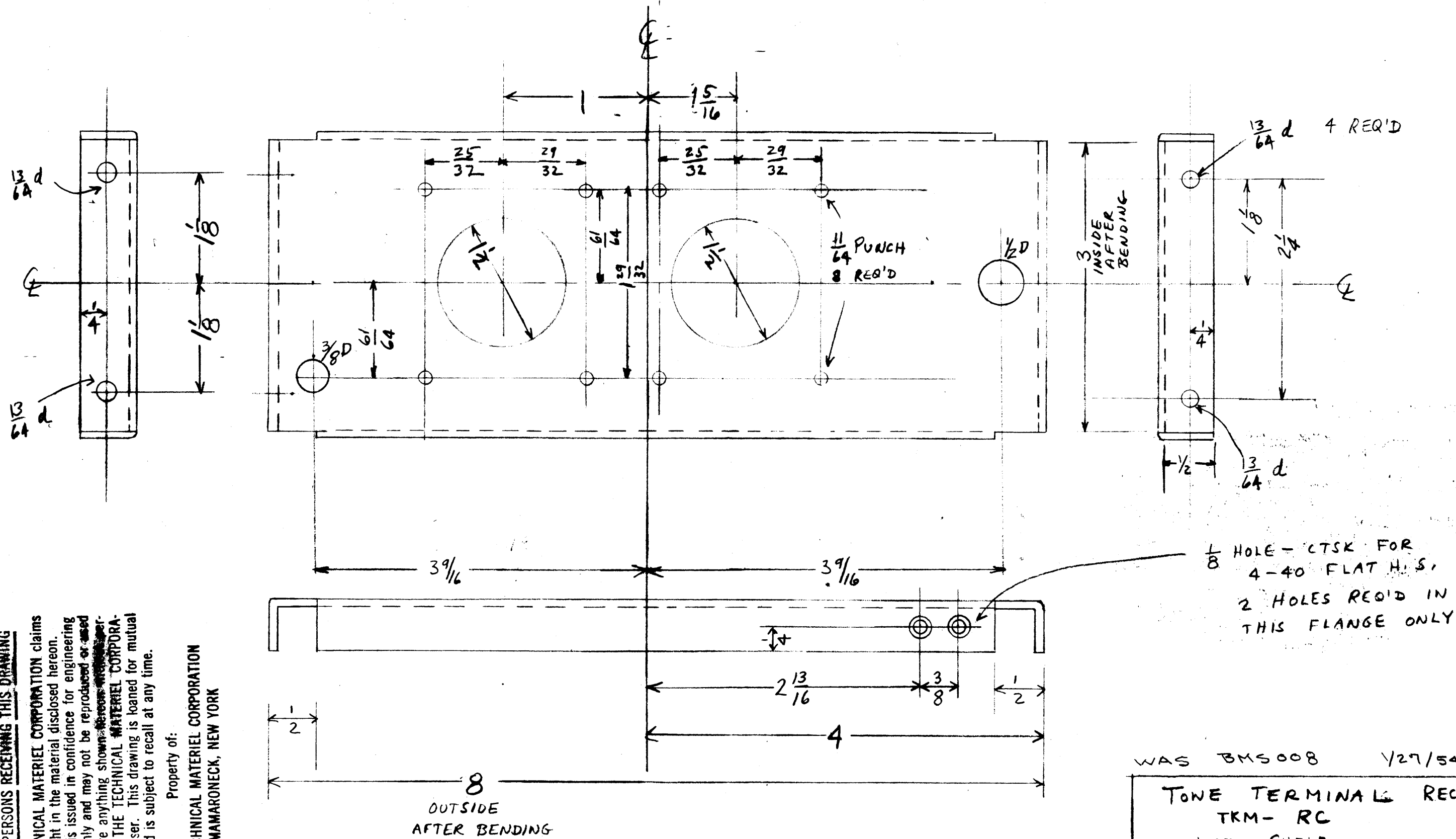
8 RECID

NOTICE TO PERSONS RECEIVING THIS DRAWING

THE TECHNICAL MATERIEL CORPORATION claims proprietary right in the material disclosed hereon. This drawing is issued in confidence for engineering information only and may not be reproduced or used to manufacture anything shown hereon without permission from THE TECHNICAL MATERIEL CORPORATION to the user. This drawing is loaned for mutual assistance and is subject to recall at any time.

Property of:

THE TECHNICAL MATERIEL CORPORATION
MAMARONECK, NEW YORK

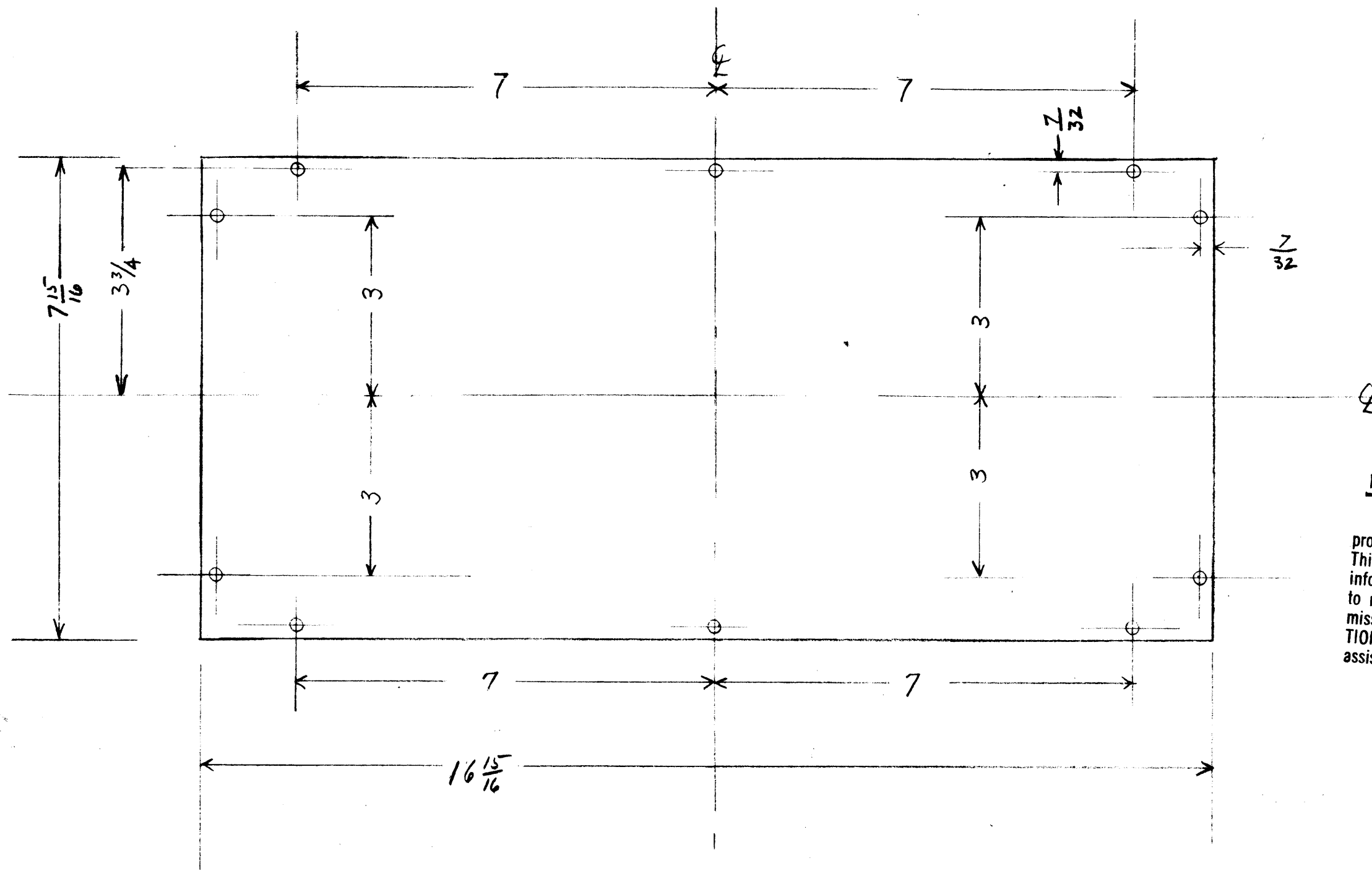


ONE PER UNIT
 USE: 16 GA 1/4 HARD ALUM
 FINISH: ALKALI ETCH & LACQUER FINISH
 MAT SIZE 4" x 8 29/32"

WAS BMS008 1/27/54

TONE TERMINAL RECEIVE
 TRM-RC
 LEFT SHELF

SCALE: FULL Tol: 1/64
 DRAWN: P.B. JAN. 15, 1951
 APPROVED: *hu* CHKD R.B.
 DWG No: MS-427



NOTICE TO PERSONS RECEIVING THIS DRAWING

THE TECHNICAL MATERIEL CORPORATION claims proprietary right in the material disclosed hereon. This drawing is issued in confidence for engineering information only and may not be reproduced or used to manufacture anything shown hereon without permission from THE TECHNICAL MATERIEL CORPORATION to the user. This drawing is loaned for actual assistance and is subject to recall at any time.

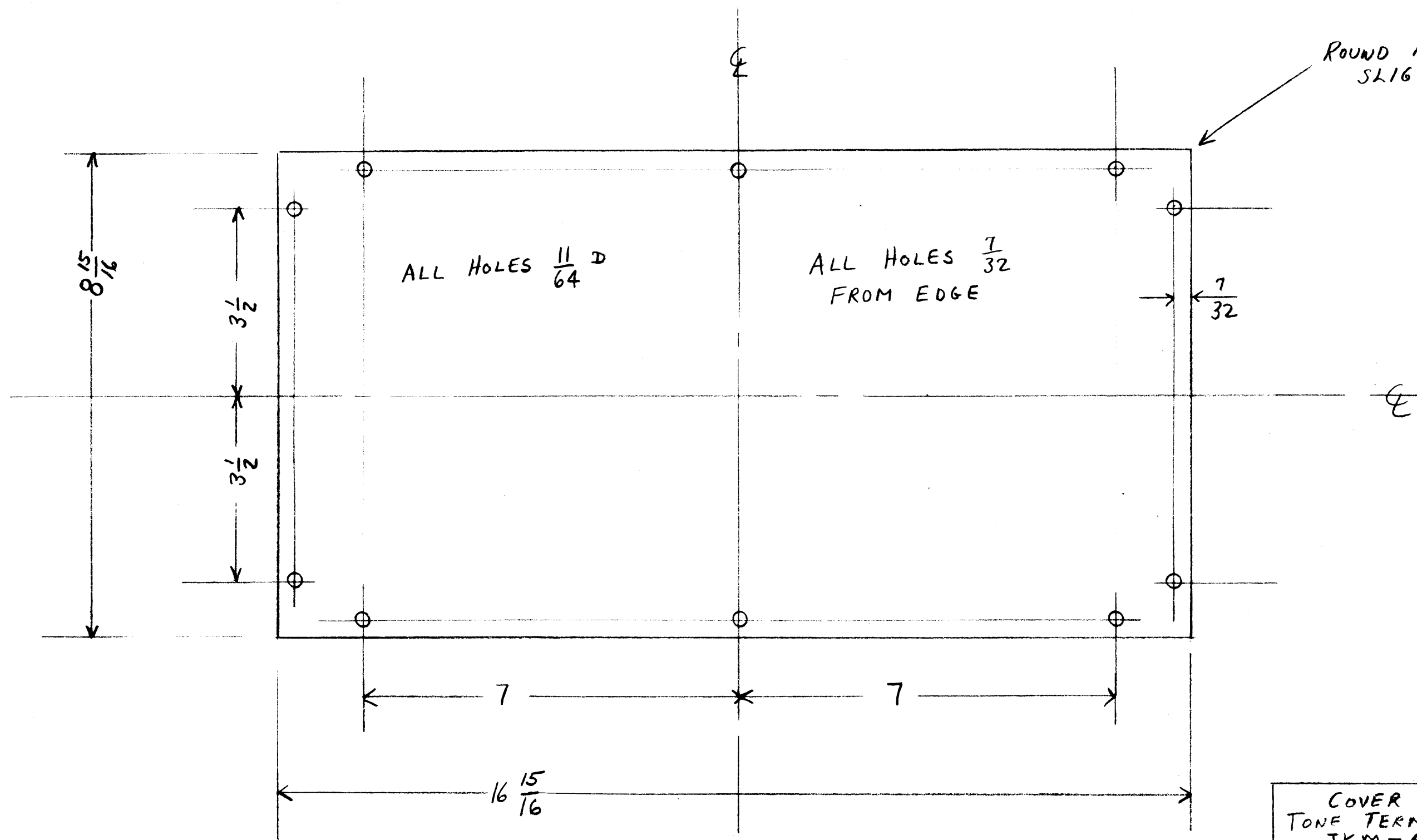
Property of:
 THE TECHNICAL MATERIEL CORPORATION
 MAMARONECK, NEW YORK

ALL HOLES $\frac{11}{64}$ D - 10 REQ'D
 ALL HOLES $\frac{7}{32}$ FROM EDGE TO CENTER LINE

USE: 20 GA 24 ST ALUM
 FINISH: ALKALI ETCH & LACQUER FINISH
 TWO PER UNIT
 MAT SIZE $7\frac{15}{16}$ " x $16\frac{15}{16}$ "

WAS BMS009 1/27/54

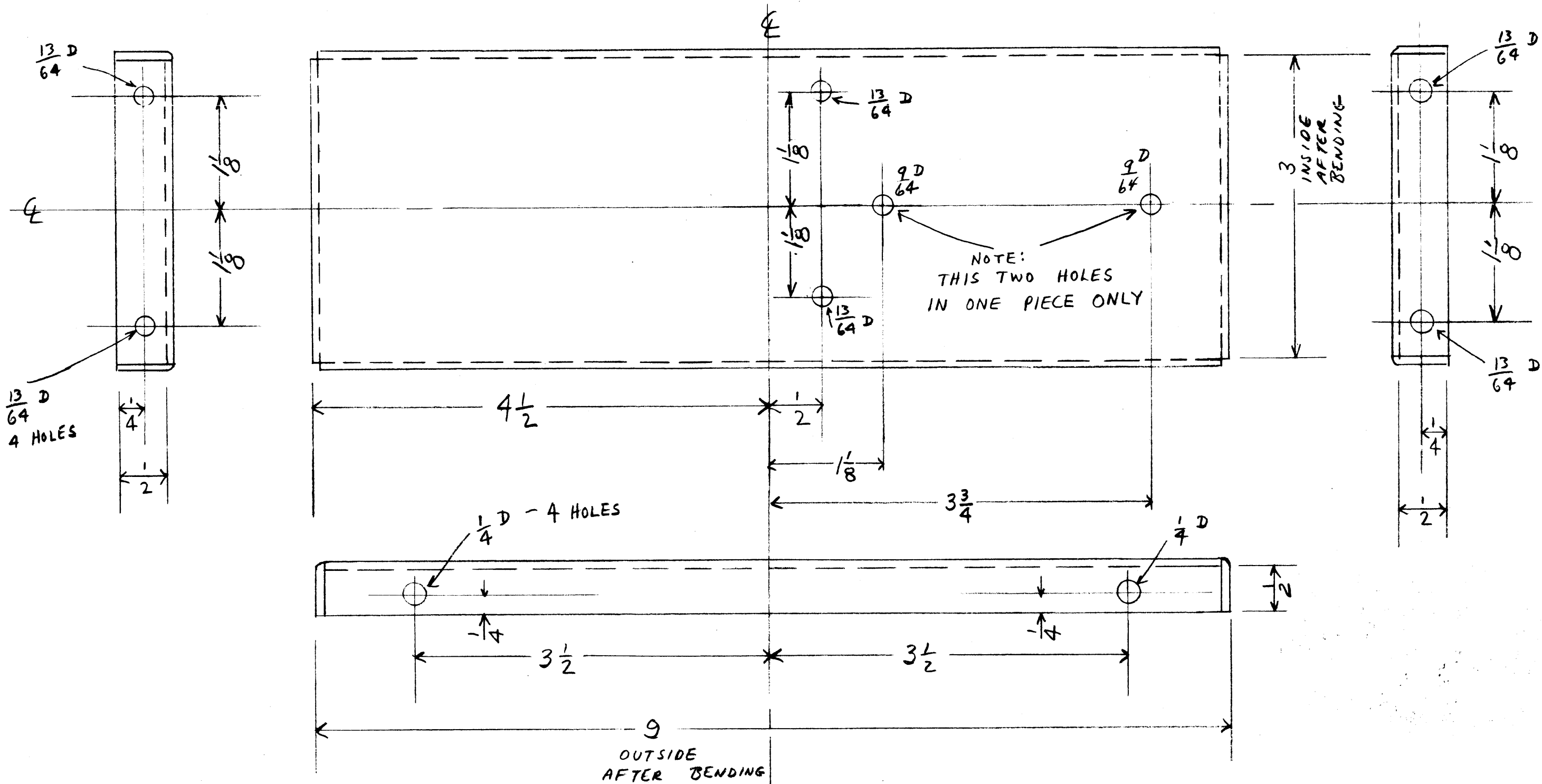
TONE TERMINAL RECEIVE
 TKM-RC
 COVER PLATE
 SCALE: HALF TOL: $\frac{1}{64}$
 DRAWN: P.B. JAN 15, 1951
 APPROVED: *su* CHKD R.B.
 DWG No: MS-428



TWO PIECES PER UNIT
 MATERIAL: 20 GA 24 ST ALUM
 FINISH: ALKALI ETCH & LACQUER
 MAT. SIZE: $8 \frac{15}{16} \times 16 \frac{15}{16}$

| | |
|---|----------------|
| COVER PLATES TONE TERMINAL SYSTEM TKM-4 | |
| THE TECHNICAL MATERIEL CORPORATION MAMARONECK, NEW YORK | |
| DATE 2-27-51 | CHKD. <i>M</i> |
| DRAWN P. B. | APPD. K. B. |
| SHEET OF | NO MS-432 |

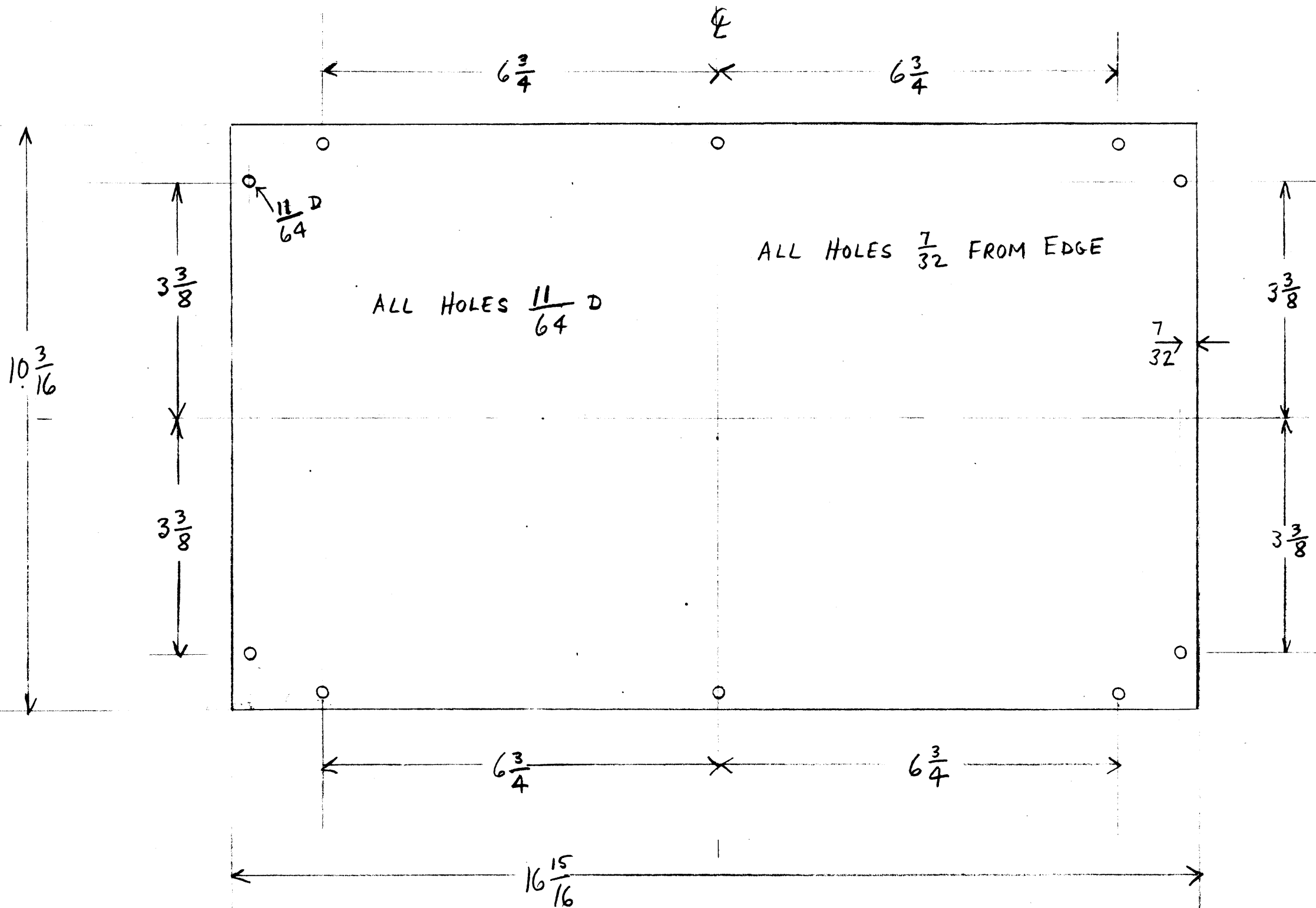
was BMS018
 212/54



MAKE TWO PIECES PER UNIT
 USE: 16 GA $\frac{1}{4}$ HARD ALUM
 FINISH: ALKALI ETCH & LACQUER
 MAT SIZE: 4 x $9\frac{29}{32}$

| | |
|---|--------------------------|
| SIDE CHASSIS ELEMENTS TONE TERMINAL TRANSMIT TKM-TC-4 | |
| THE TECHNICAL MATERIEL CORPORATION MAMARONECK, NEW YORK | |
| DATE 2-27-51 | CHKD. P.B. |
| DRAWN P.B. | APPD. <i>[Signature]</i> |
| SHEET OF | NO MS-433 |

WAS BMS019 2/2/54



MATERIAL: 20 GA 24 ST ALUM
 FINISH: ALKALI ETCH & LACQUER
 TWO PIECES PER UNIT
 MAT SIZE $10 \frac{3}{16} \times 16 \frac{15}{16}$

MS-436-1 TOP COVER
 MS-436-2 BOTTOM COVER

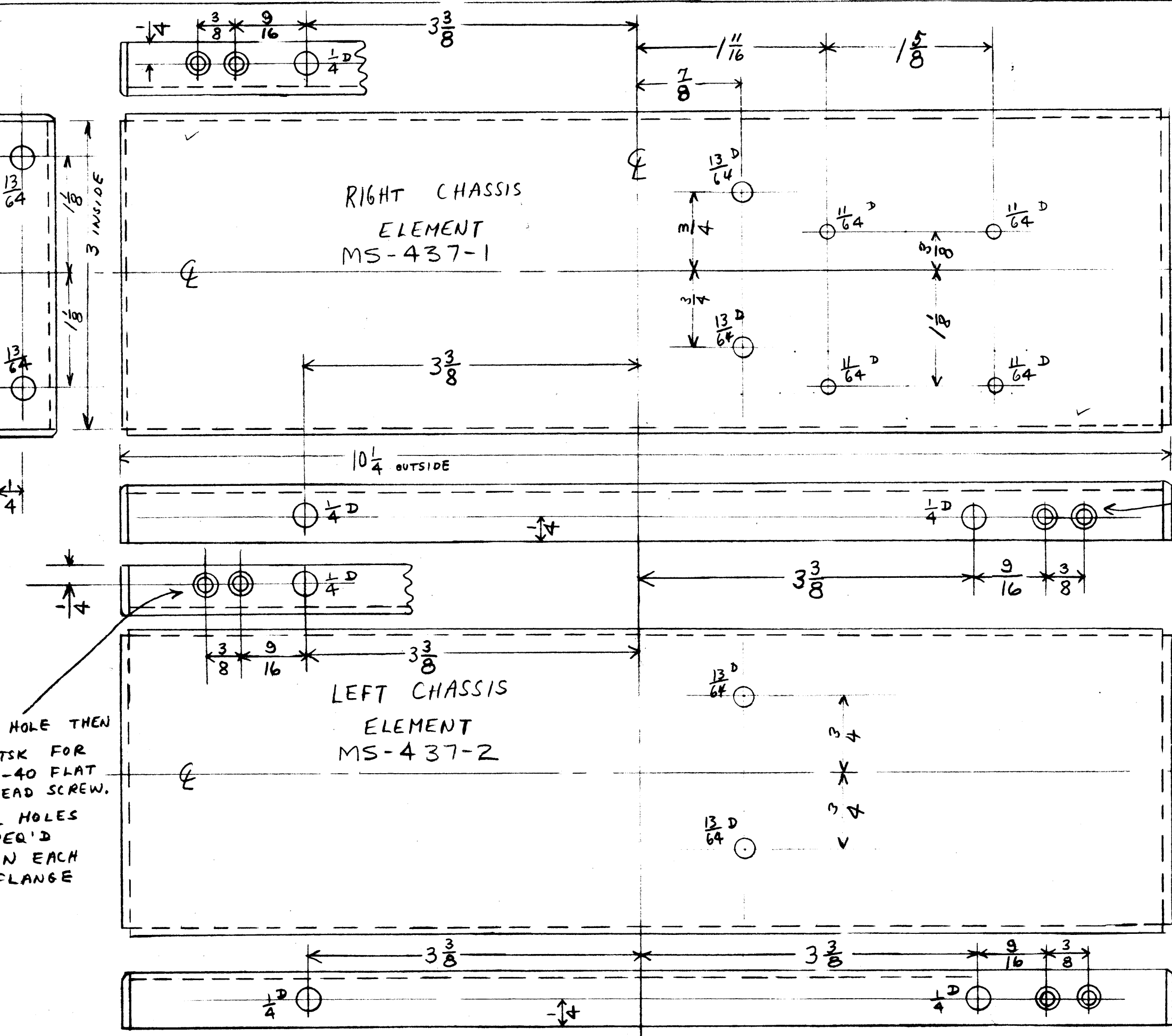
NOTICE TO PERSONS RECEIVING THIS DRAWING

THE TECHNICAL MATERIEL CORPORATION claims proprietary right in the material disclosed hereon. This drawing is issued in confidence for engineering information only and may not be reproduced or used to manufacture anything shown hereon without permission from THE TECHNICAL MATERIEL CORPORATION to the user. This drawing is loaned for mutual assistance and is subject to recall at any time.

Property of:
 THE TECHNICAL MATERIEL CORPORATION
 MAMARONECK, NEW YORK

| | |
|---|------------------|
| COVER PLATES MODEL TAD-1 | |
| THE TECHNICAL MATERIEL CORPORATION MAMARONECK, NEW YORK | |
| DATE FEB 14, 1951 | CHKD. <i>PJB</i> |
| DRAWN P.B. | APPD. <i>AM</i> |
| SHEET OF | NO MS-436 |

WAS BMSOIG 11/27/53



NOTICE TO PERSONS RECEIVING THIS DRAWING

THE TECHNICAL MATERIEL CORPORATION claims proprietary right in the material disclosed hereon. This drawing is issued in confidence for engineering information only and may not be reproduced or used to manufacture anything shown hereon without permission from THE TECHNICAL MATERIEL CORPORATION to the user. This drawing is loaned for mutual assistance and is subject to recall at any time.

Property of:
THE TECHNICAL MATERIEL CORPORATION
 MAMARONECK, NEW YORK

1/8" HOLE THEN
 CTSK FOR 4-40
 FLAT HEAD SCREW.
 2 HOLES REQ'D
 ON EACH FLANGE

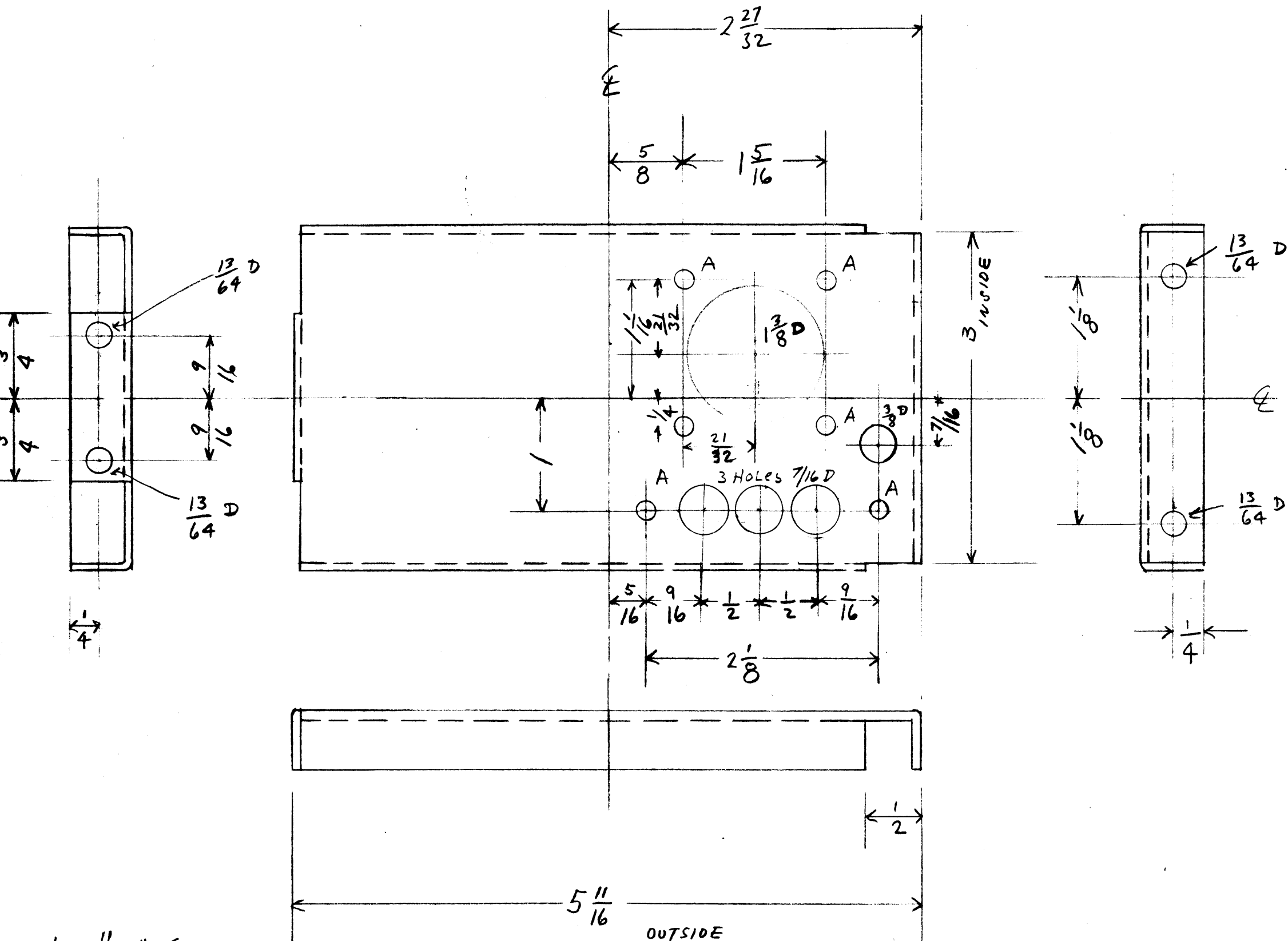
MATERIAL: 16 GA 1/4 HARD ALUM
 FINISH: ALKALI ETCH & LACQUER
 ONE EACH PER UNIT
 MAT SIZE 4x11 5/32

| | |
|---|------------------|
| SIDE CHASSIS ELEMENTS MODEL TAD-1 | |
| THE TECHNICAL MATERIEL CORPORATION MAMARONECK, NEW YORK | |
| DATE FEB 14, 1951 | CHKD. <i>ogb</i> |
| DRAWN P. B. | APPD. <i>ku</i> |
| SHEET OF | NO MS-437 |

WAS BMS014 11/27/53

NOTICE TO PERSONS RECEIVING THIS DRAWING
 THE TECHNICAL MATERIEL CORPORATION claims proprietary right in the material disclosed hereon. This drawing is issued in confidence for engineering information only and may not be reproduced or used to manufacture anything shown hereon without permission from THE TECHNICAL MATERIEL CORPORATION to the user. This drawing is loaned for mutual assistance and is subject to recall at any time.

Property of:
THE TECHNICAL MATERIEL CORPORATION
 MAMARONECK, NEW YORK



A = $\frac{11}{64}$ HOLE
 MATERIAL: 16 GA $\frac{1}{4}$ HARD ALUM $4 \times 6\frac{9}{32}$
 FINISH: ALKALI ETCH & LACQUER
 ONE PER UNIT

OUTSIDE
 AFTER BENDING

| | |
|--|------------------|
| CENTER BRACKET MODEL TAD-1 | |
| THE TECHNICAL MATERIEL CORPORATION MAMARONECK, NEW YORK | |
| DATE FEB. 14, 1951 | CHKD. <i>PMB</i> |
| DRAWN P.B. | APPD. <i>lm</i> |
| SHEET OF | NO MS-438 |
| WAS BMS015 11/27/53 | |

IF IT IS FOUND DESIRABLE TO CHANGE ANY TOLERANCE OR OTHER DETAIL SPECIFIED ON THIS DRAWING NOTIFY THE PURCHASER PROMPTLY.

MAXIMUM ALLOWABLE TOLERANCES HAVE BEEN DETERMINED AND DEVIATIONS WILL BE CAUSE FOR REJECTION. REMOVE ALL BURRS AND SHARP EDGES

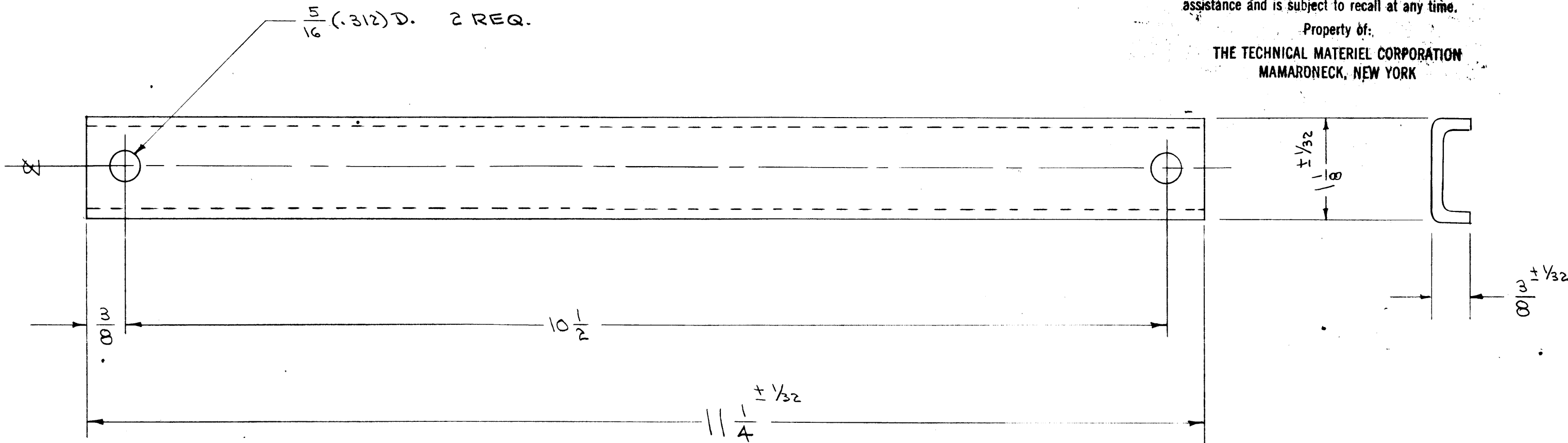
MS-449

NOTICE TO PERSONS RECEIVING THIS DRAWING

THE TECHNICAL MATERIEL CORPORATION claims proprietary right in the material disclosed hereon. This drawing is issued in confidence for engineering information only and may not be reproduced or used to manufacture anything shown hereon without permission from THE TECHNICAL MATERIEL CORPORATION to the user. This drawing is loaned for mutual assistance and is subject to recall at any time.

Property of:

THE TECHNICAL MATERIEL CORPORATION
MAMARONECK, NEW YORK



SPOTWELD TO BOTTOM CHASSIS (DWG. MS-444) AS PER DWG. A-645.

REQ. 2 PER UNIT

| REQ. | ITEM | PART NO. | DESCRIPTION | SYMBOL |
|------|------|--------------|--|--------|
| | | 13G. (.0937) | THE TECHNICAL MATERIEL CORP. MAMARONECK, NEW YORK | |
| | | STEEL | BOTTOM BRACKETS | |
| | | MILD | TAC-1 | |
| | | | C.D.D. | |
| | | | DRAWN | |
| | | | CHECKED | |
| | | | FINAL APPROVAL | |
| | | | MS-449 | |

| ISSUE | ITEM | CHANGED FROM | DATE | CN. NO. | DRAFTS | CHECKER | ENG. APP. |
|------------|-------------------|---|------|---------|--------|---------|-----------|
| TOLERANCES | | SCALE: 1/2" | | | | | |
| ALL OTHERS | DEC. DIM. ± | DRILL, PUNCH, COMMERCIAL STOCK SIZES AND MANUFACTURERS TOLERANCES ARE NOT INCLUDED. | | | | | |
| | FRAC. DIM. ± 1/64 | | | | | | |
| | ANGULAR DIM. ± | | | | | | |

| MODEL | PROJECT NO. | ASS'Y. NO. | DATE |
|-------|-------------|------------|----------|
| TAC-1 | 132 | A-645 | 12-28-53 |

USED ON

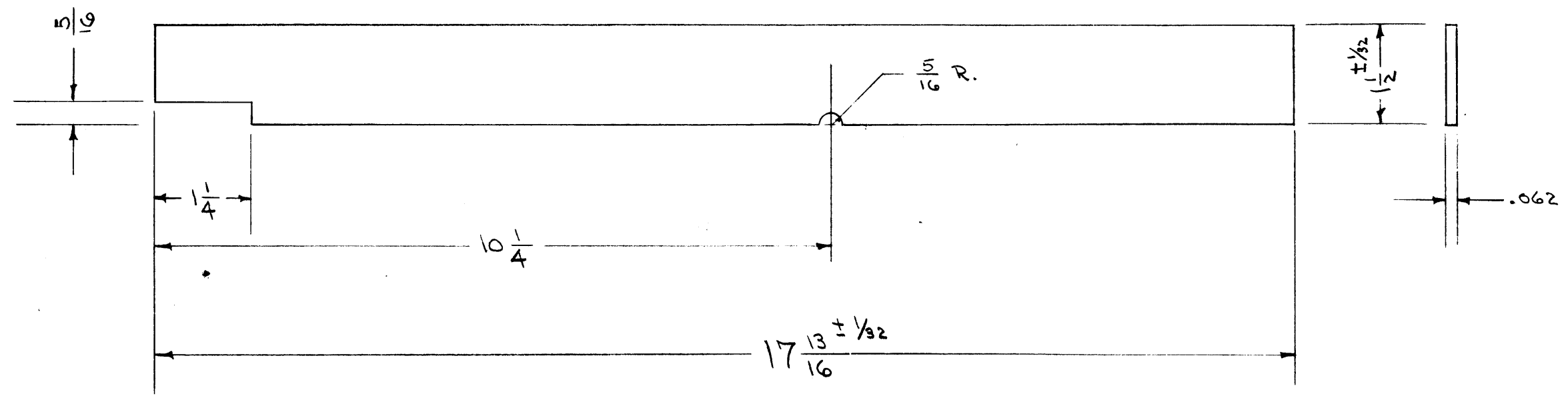
IF IT IS FOUND DESIRABLE TO CHANGE ANY TOLERANCE OR THE DETAIL SPECIFIED ON THIS DRAWING NOTIFY THE PURCHASER PROMPTLY.

MAXIMUM ALLOWABLE TOLERANCES HAVE BEEN DETERMINED AND DEVIATIONS WILL BE CAUSE FOR REJECTION. REMOVE ALL BURRS AND SHARP EDGES

MS-451

NOTICE TO PERSONS RECEIVING THIS DRAWING
 THE TECHNICAL MATERIEL CORPORATION claims proprietary right in the material disclosed hereon. This drawing is issued in confidence for engineering information only and may not be reproduced or used to manufacture anything shown hereon without permission from THE TECHNICAL MATERIEL CORPORATION to the user. This drawing is loaned for mutual assistance and is subject to recall at any time.

Property of:
 THE TECHNICAL MATERIEL CORPORATION
 MAMARONECK, NEW YORK



SPOTWELD TO COVER (DWG. MS-447) AS PER DWG. A-644

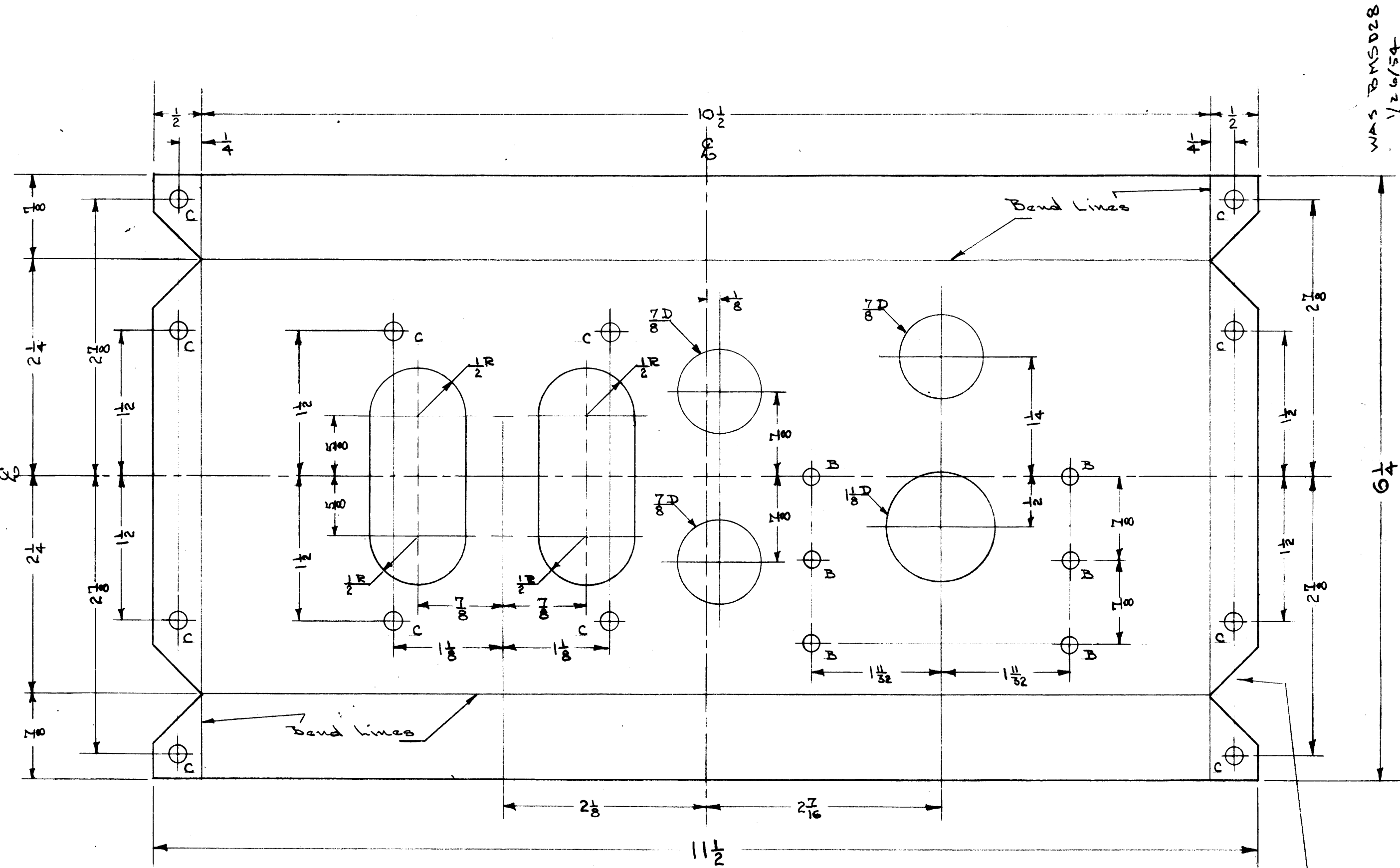
REQ. 1 PER UNIT

| REQ. | ITEM | PART NO. | DESCRIPTION | SYMBOL |
|------|--------------------|----------------|------------------------------|--------|
| | | 16 G. (.0625) | THE TECHNICAL MATERIEL CORP. | |
| | | STOCK SIZE | MAMARONECK, NEW YORK | |
| | STEEL | # | RIGHT SUPPORT | |
| | MATERIAL | WEIGHT PER PC. | TAC-1 | |
| | MILD | | | |
| | TYPE & TEMPER | | | |
| | | | | |
| | HEAT TREAT. SPEC. | | | |
| | | | | |
| | FINISH & SPEC. NO. | | | |

| ISSUE | ITEM | CHANGED FROM | DATE | CN. NO. | DRAFTS | CHECKER | ENG. APP. |
|------------|------|---|------|---------|--------|---------|-----------|
| TOLERANCES | | SCALE: $\frac{1}{16}$ | | | | | |
| ALL OTHERS | | DRILL, PUNCH, COMMERCIAL STOCK SIZES AND MANUFACTURERS TOLERANCES ARE NOT INCLUDED. | | | | | |

| MODEL | PROJECT NO. | ASS'Y. NO. | DATE |
|-------|-------------|------------|--------|
| TAC-1 | 132 | A-644 | 1-6-54 |

USED ON



WAS BMSD28
1/26/54

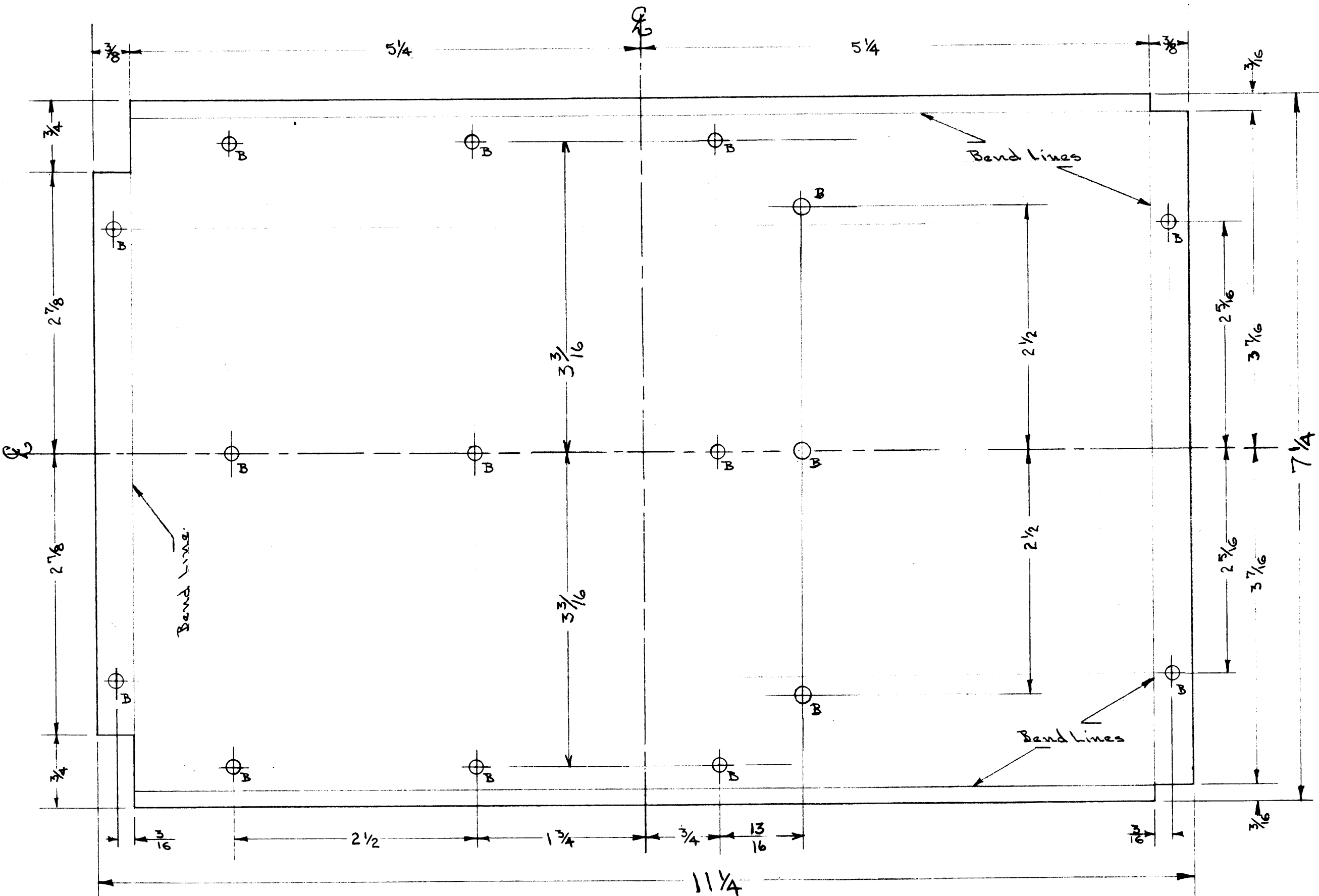
| | |
|------------------------------------|--------|
| RIGHT CHASSIS UNIT | |
| DIVERSITY CONTROL UNIT | |
| MODEL DCO | |
| THE TECHNICAL MATERIEL CORPORATION | |
| MAMARONECK, NEW YORK | |
| DATE | 5-1-51 |
| DESIGN | AND |
| CHECKED | OF |
| NO. | WB-466 |

Note:
Bend All flanges Up 90°
To form Open End Box.

B = $\frac{9}{16}$ - 6 Holes
C = $\frac{3}{16}$ - 12 Holes

Make All Notches
for Right Angle Bends.

Material: 52S-1/4 Hard Aluminum - .064
Required: 1 Per Unit.
Finish: Alkali Etch. & Lacquer.



B = 1/64 "

Bend All Flanges Up 90°

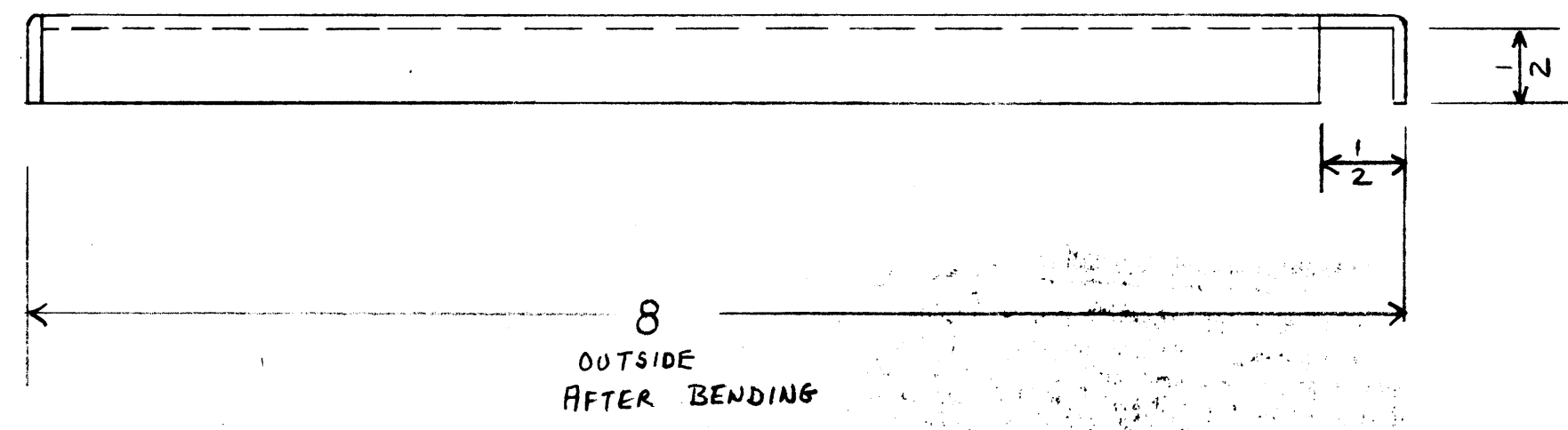
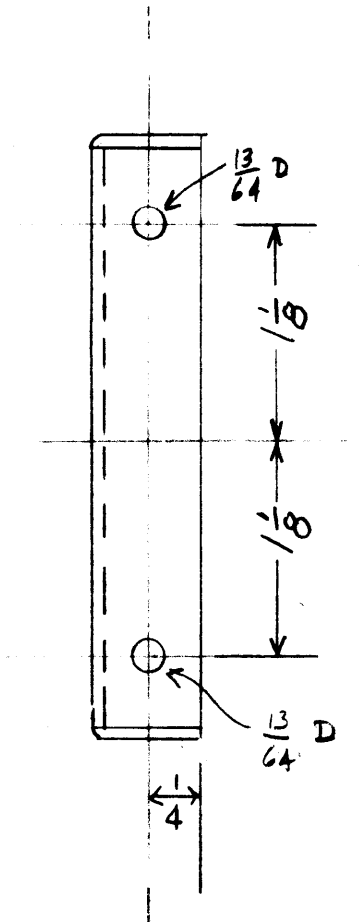
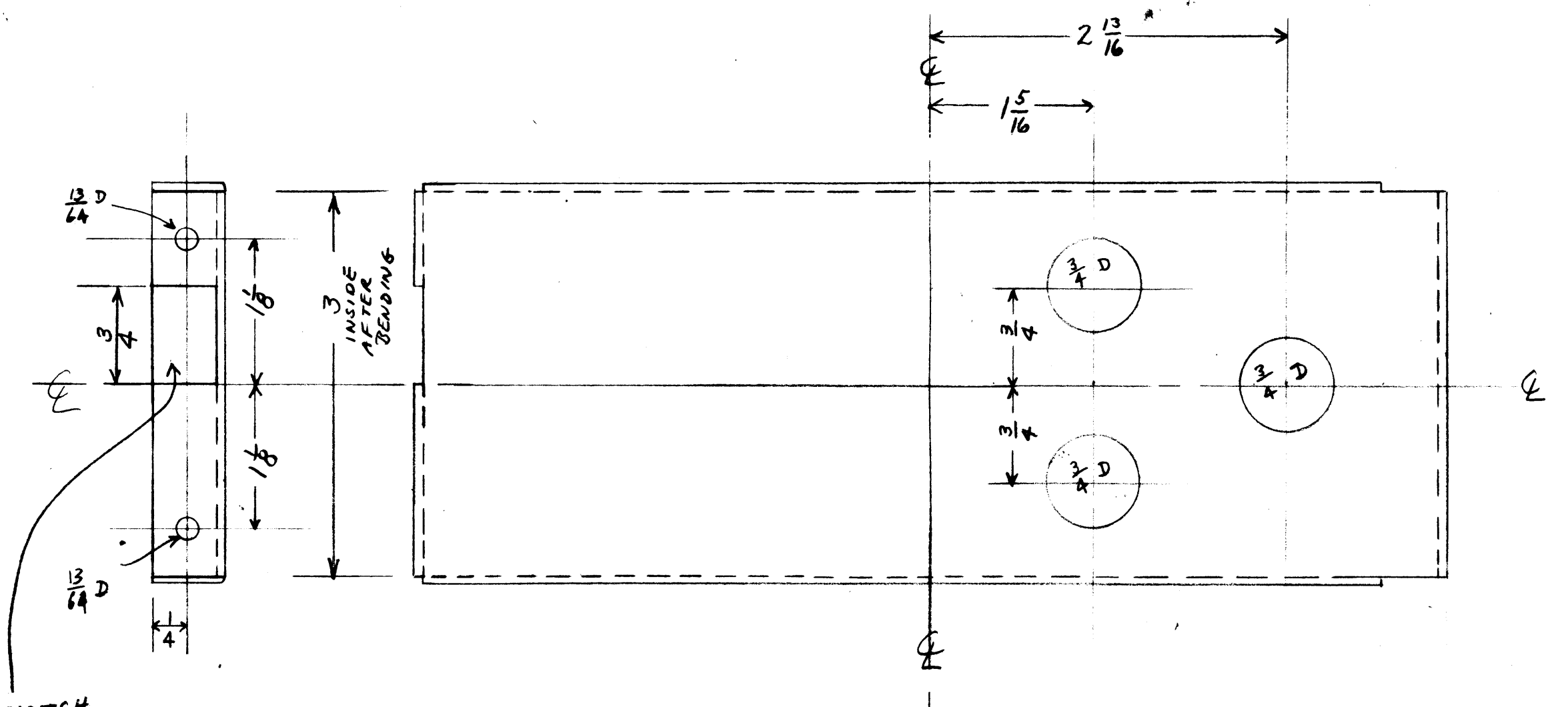
WAS BMS030
1/25/54

| | |
|--|--------------------------------|
| CENTER CHASSIS ELEMENT DIVERSITY CONTROL UNIT | |
| MODEL DCO | |
| THE TECHNICAL MATERIEL CORPORATION | |
| MAMARONECK, NEW YORK | |
| DATE 5-4-51 | DESIGNED BY <i>[Signature]</i> |
| DRAWN <i>[Signature]</i> | APPROVED BY <i>[Signature]</i> |
| SHEET OF | TED MS-468 |

Material: 52s-VHard Aluminum - .064
Required: 1 Per Unit.
Finish: Alkali Etch & Lacquer.

MS-468

| | | | |
|--------------------|----------|------------------|---------|
| LTR | APPROVED | ORIGINAL RELEASE | DATE |
| <i>[Signature]</i> | | | 8/14/69 |
| | DESC. | | |



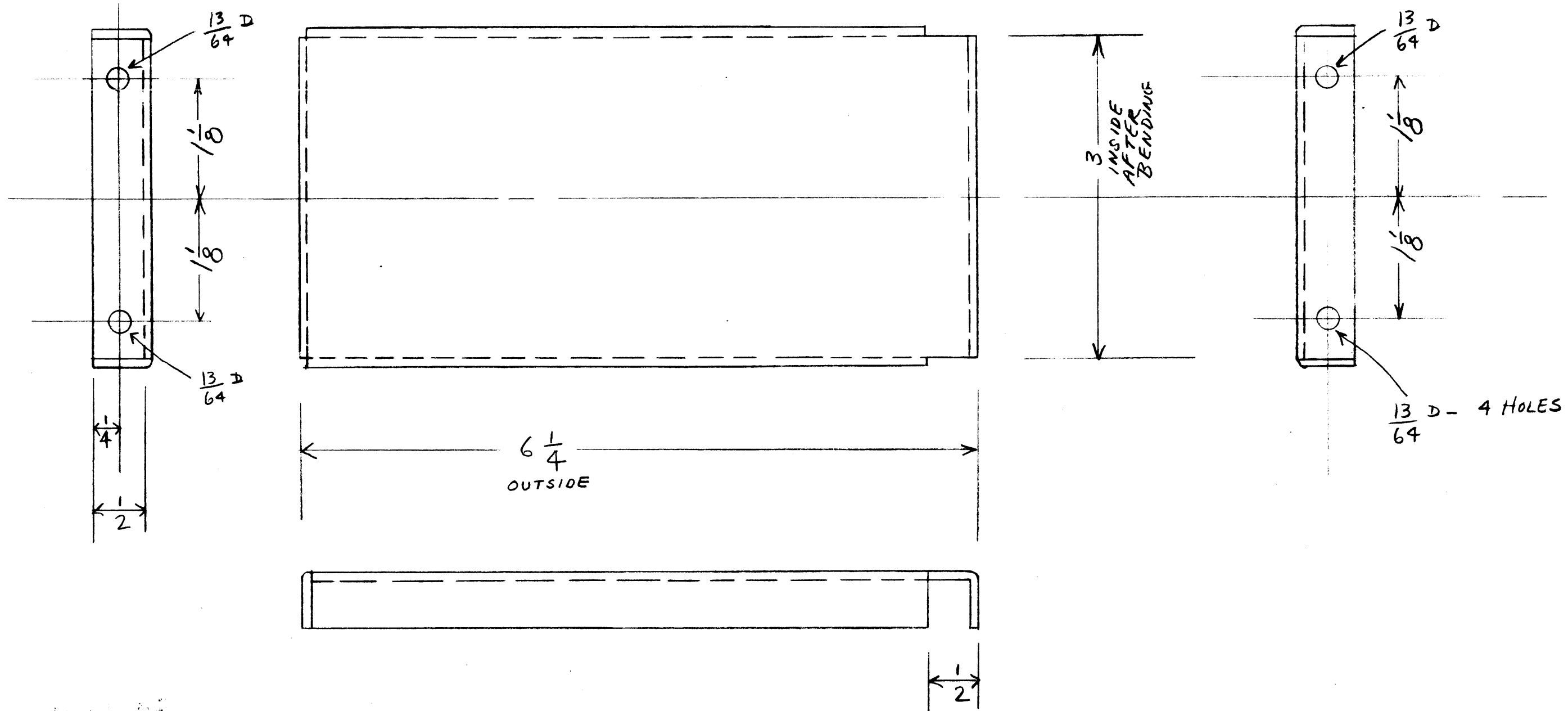
NOTCH
ON THIS
END ONLY

NOTICE TO PERSONS RECEIVING THIS DRAWING
 THE TECHNICAL MATERIEL CORPORATION claims proprietary right in the material disclosed hereon. This drawing is issued in confidence for engineering information only and may not be reproduced or used to manufacture anything shown hereon without permission from THE TECHNICAL MATERIEL CORPORATION to the user. This drawing is loaned for mutual assistance and is subject to recall at any time.

Property of:
 THE TECHNICAL MATERIEL CORPORATION
 MAMARONECK, NEW YORK

ONE PER UNIT
 MATERIAL: 16 GA 1/4 HARD ALUM
 FINISH: ALKALI ETCH & LACQUER
 MATERIAL SIZE 4" x 8 23/32

| | |
|--|----------------|
| THE TECHNICAL MATERIEL CORPORATION MAMARONECK, NEW YORK | |
| CONDENSER BRACKET MODEL TAK-1 | |
| FULL SCALE | TOL 1/64 |
| DRAWN: P.B. | APPD: <i>h</i> |
| CHKD: R.B. | |
| DATE: JAN 23, 1951 | NO: MS-475 |



ONE PIECE PER UNIT

USE: 16 GA. $\frac{1}{4}$ HARD ALUM.

FINISH: ALKALI ETCH & LACQUER

MAT. SIZE: 4" x 7 $\frac{5}{32}$ "

NOTICE TO PERSONS RECEIVING THIS DRAWING

THE TECHNICAL MATERIEL CORPORATION claims proprietary right in the material disclosed hereon. This drawing is issued in confidence for engineering information only and may not be reproduced or used to manufacture anything shown hereon without permission from THE TECHNICAL MATERIEL CORPORATION to the user. This drawing is loaned for mutual assistance and is subject to recall at any time.

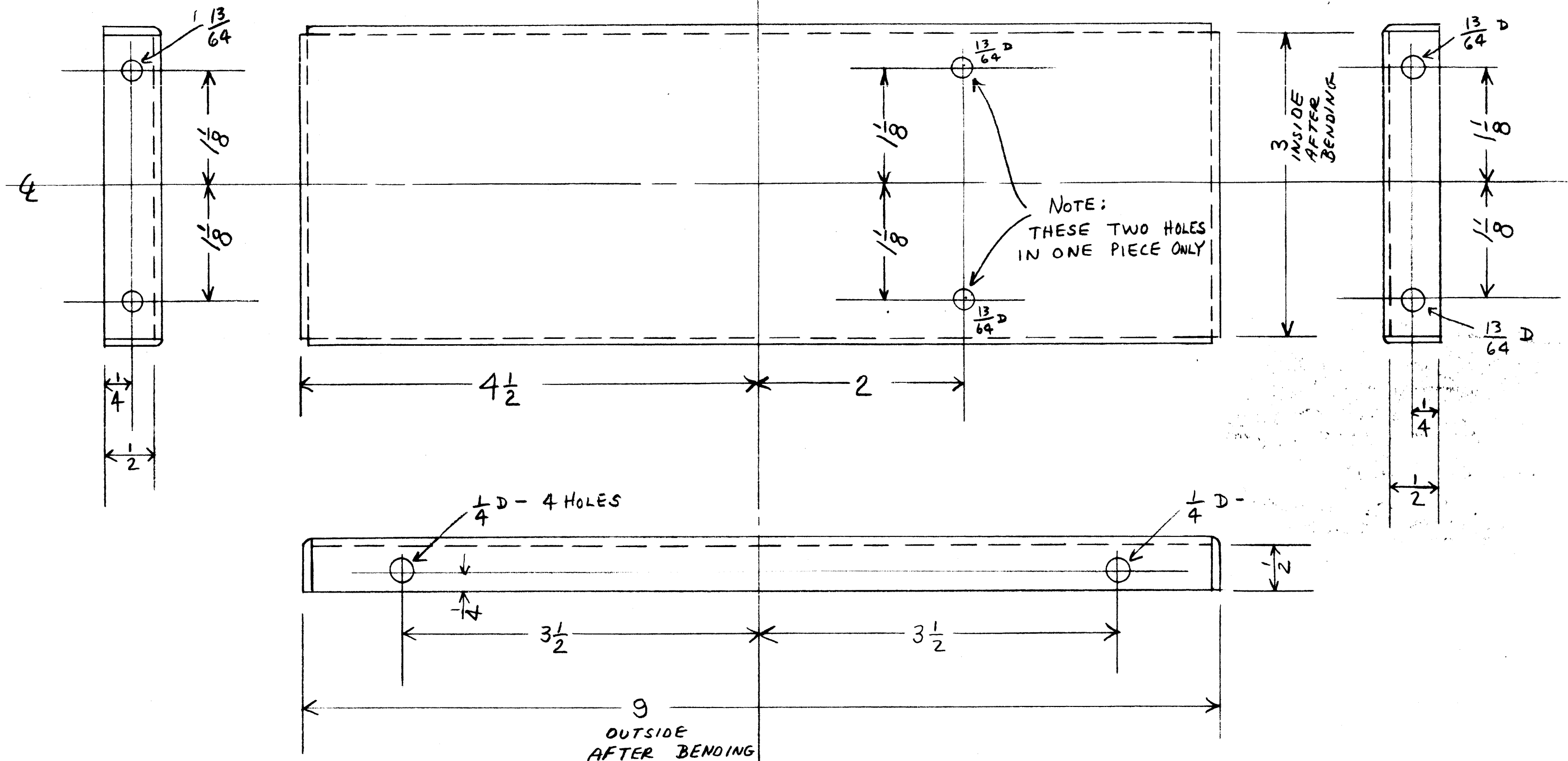
Property of:

THE TECHNICAL MATERIEL CORPORATION
MAMARONECK, NEW YORK

| | |
|------------------------------------|-------------------|
| LEFT SHELF | |
| TONE TERMINAL RECEIVE | |
| TKM- RC- 4 | |
| THE TECHNICAL MATERIEL CORPORATION | |
| MAMARONECK, NEW YORK | |
| DATE 3-1-51 | CHKD. <i>Lab.</i> |
| DRAWN P.B. | APPD. <i>Lab.</i> |
| SHEET OF | NO MS-482 |

WAS BMS020

1/26/54



MAKE TWO PIECES PER UNIT
 USE: 16 GA $\frac{1}{4}$ HARD ALUM
 FINISH: ALKALI ETCH & LACQUER
 MAT SIZE: 4" X $9\frac{29}{32}$

| | |
|------------------------------------|-------------------|
| SIDE CHASSIS ELEMENTS | |
| TONE TERMINAL RECEIVE | |
| TKM-RC-4 | |
| THE TECHNICAL MATERIEL CORPORATION | |
| MAMARONECK, NEW YORK | |
| DATE 3-1-51 | CHKD. <i>R.B.</i> |
| DRAWN P.B. | APPD. <i>R.B.</i> |
| SHEET OF | NO. <i>MS-405</i> |

WAS BMS023
 1/26/54

IF IT IS FOUND DESIRABLE TO CHANGE ANY TOLERANCE OR OTHER DETAIL SPECIFIED ON THIS DRAWING NOTIFY THE PURCHASER PROMPTLY.

MAXIMUM ALLOWABLE TOLERANCES HAVE BEEN DETERMINED AND DEVIATIONS WILL BE CAUSE FOR REJECTION. REMOVE ALL BURRS AND SHARP EDGES

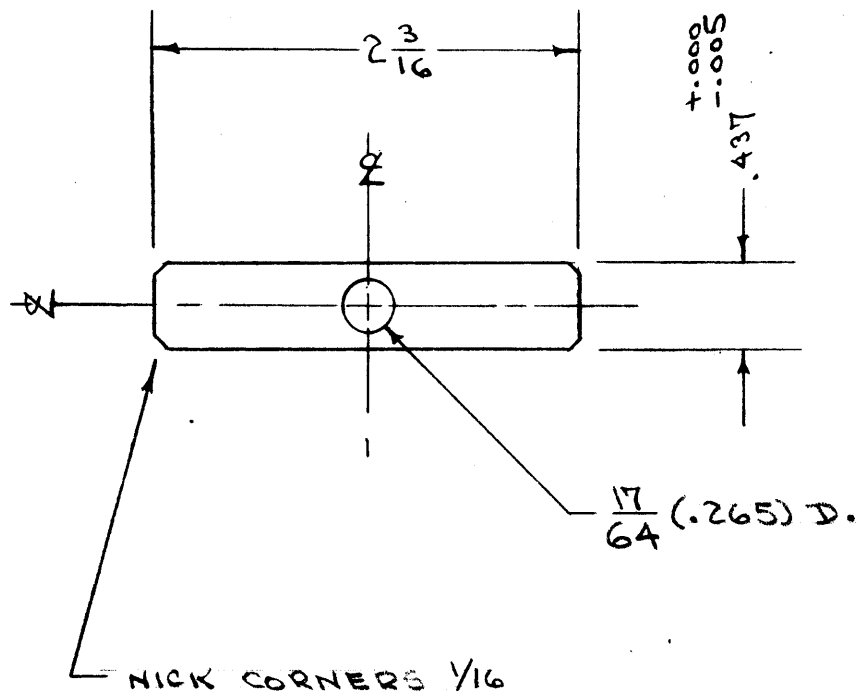
MS-492

NOTICE TO PERSONS RECEIVING THIS DRAWING

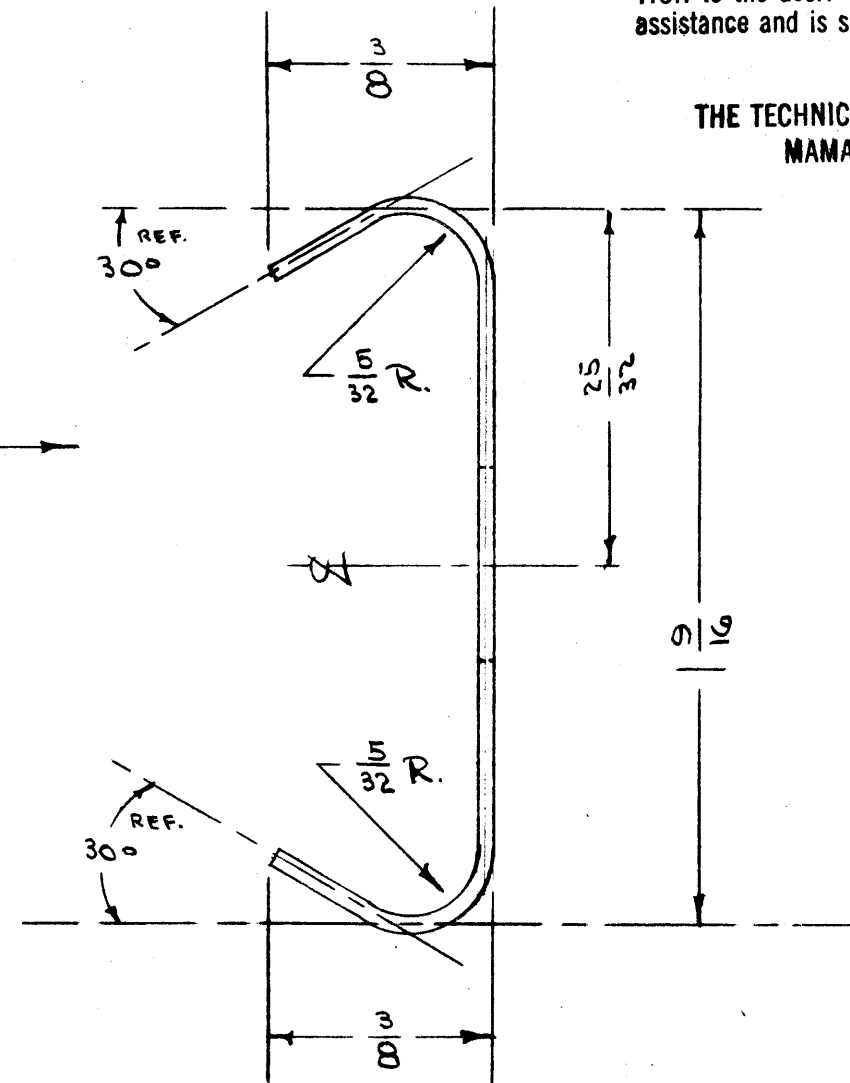
THE TECHNICAL MATERIEL CORPORATION claims proprietary right in the material disclosed hereon. This drawing is issued in confidence for engineering information only and may not be reproduced or used to manufacture anything shown hereon without permission from THE TECHNICAL MATERIEL CORPORATION to the user. This drawing is loaned for mutual assistance and is subject to recall at any time.

Property of:

THE TECHNICAL MATERIEL CORPORATION
MAMARONECK, NEW YORK



BEND TO DIMENSIONS SHOWN →



| REQ. | ITEM | PART NO. | DESCRIPTION | SYMBOL |
|------|--------------------|----------------|------------------------------|--------|
| | | .016 | THE TECHNICAL MATERIEL CORP. | |
| | | STOCK SIZE | MAMARONECK. NEW YORK | |
| | NICKEL SILVER | | SWITCH PRESSURE LEAF, DOUBLE | |
| | MATERIAL | WEIGHT PER PC. | TAC-1 | |
| | SPRING TEMPER | | | |
| | TYPE & TEMPER | | | |
| | | | | |
| | HEAT TREAT. SPEC. | | | |
| | | | | |
| | FINISH & SPEC. NO. | | | |

| ISSUE | ITEM | CHANGED FROM | DATE | CN. NO. | DRAFTS | CHECKER | ENG. APP. |
|------------|-------------|-------------------|---|---------|--------|---------|-----------|
| TOLERANCES | | SCALE: 1 | | | | | |
| ALL OTHERS | DEC. DIM. ± | FRAC. DIM. ± 1/64 | DRILL, PUNCH, COMMERCIAL STOCK SIZES AND MANUFACTURERS TOLERANCES ARE NOT INCLUDED. | | | | |

| REQ. PER UNIT | MODEL | PROJECT NO. | ASS'Y. NO. | DATE |
|---------------|-------|-------------|------------|----------|
| 1 | TAC-1 | 182 | A-667 | 12-29-53 |

USED ON

MS-492

IF IT IS FOUND DESIRABLE TO CHANGE ANY TOLERANCE OR OTHER DETAIL SPECIFIED ON THIS DRAWING NOTIFY THE PURCHASER PROMPTLY.

MAXIMUM ALLOWABLE TOLERANCES HAVE BEEN DETERMINED AND DEVIATIONS WILL BE CAUSE FOR REJECTION. REMOVE ALL BURRS AND SHARP EDGES

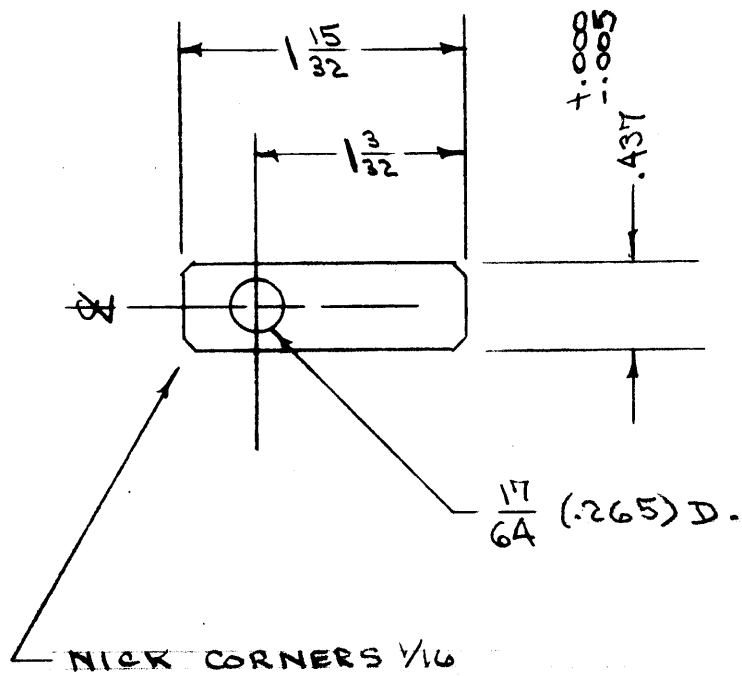
MS-494 A

NOTICE TO PERSONS RECEIVING THIS DRAWING

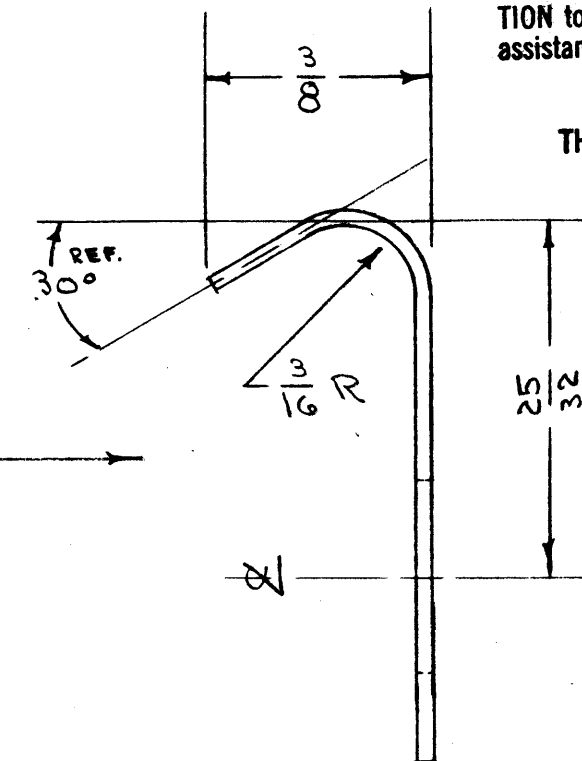
THE TECHNICAL MATERIEL CORPORATION claims proprietary right in the material disclosed hereon. This drawing is issued in confidence for engineering information only and may not be reproduced or used to manufacture anything shown hereon without permission from THE TECHNICAL MATERIEL CORPORATION to the user. This drawing is loaned for mutual assistance and is subject to recall at any time.

Property of:

THE TECHNICAL MATERIEL CORPORATION
MAMARONECK, NEW YORK



BEND TO DIMENSIONS SHOWN



| REQ. ITEM | PART NO. | DESCRIPTION | SYMBOL |
|-------------------------|----------------|------------------------------|--------|
| | .016 | THE TECHNICAL MATERIEL CORP. | |
| | STOCK SIZE | MAMARONECK. NEW YORK | |
| PHOSPHOR BRONZE GRADE A | # | SWITCH PRESSURE LEAF, SINGLE | |
| MATERIAL | WEIGHT PER PC. | TAC-1 | |
| SPRING TEMPER | | | |
| TYPE & TEMPER | | ADD. | |
| # | | DRAWN | |
| HEAT TREAT. SPEC. | | CHECKED | |
| # | | FINAL APPROVAL | |
| FINISH & SPEC. NO. | | | |

| ISSUE | ITEM | CHAN ED FROM | DATE | CN. NO. | DRAFTS | CHECKER | ENG. APP. |
|-------|------|-------------------------|---------|---------|--------|---------|-----------|
| A | 1 | MATL. WAS NICKEL SILVER | 6-20-61 | 5100 | W.A.E. | J.P.S. | |

TOLERANCES: DEC. DIM. ± 1/64, FRAC. DIM. ± 1/64, ANGULAR DIM. ± 1°

SCALE: DRILL PUNCH, COMMERCIAL STOCK SIZES AND MANUFACTURERS TOLERANCES ARE NOT INCLUDED.

| | | | | |
|---------------|-----------|-------------|-----------|----------|
| .1 | TAC-1 | 132 | A-666 | 12-29-53 |
| REQ. PER UNIT | MODEL | PROJECT NO. | ASSY. NO. | DATE |
| | U E D B N | | | |

MS-494