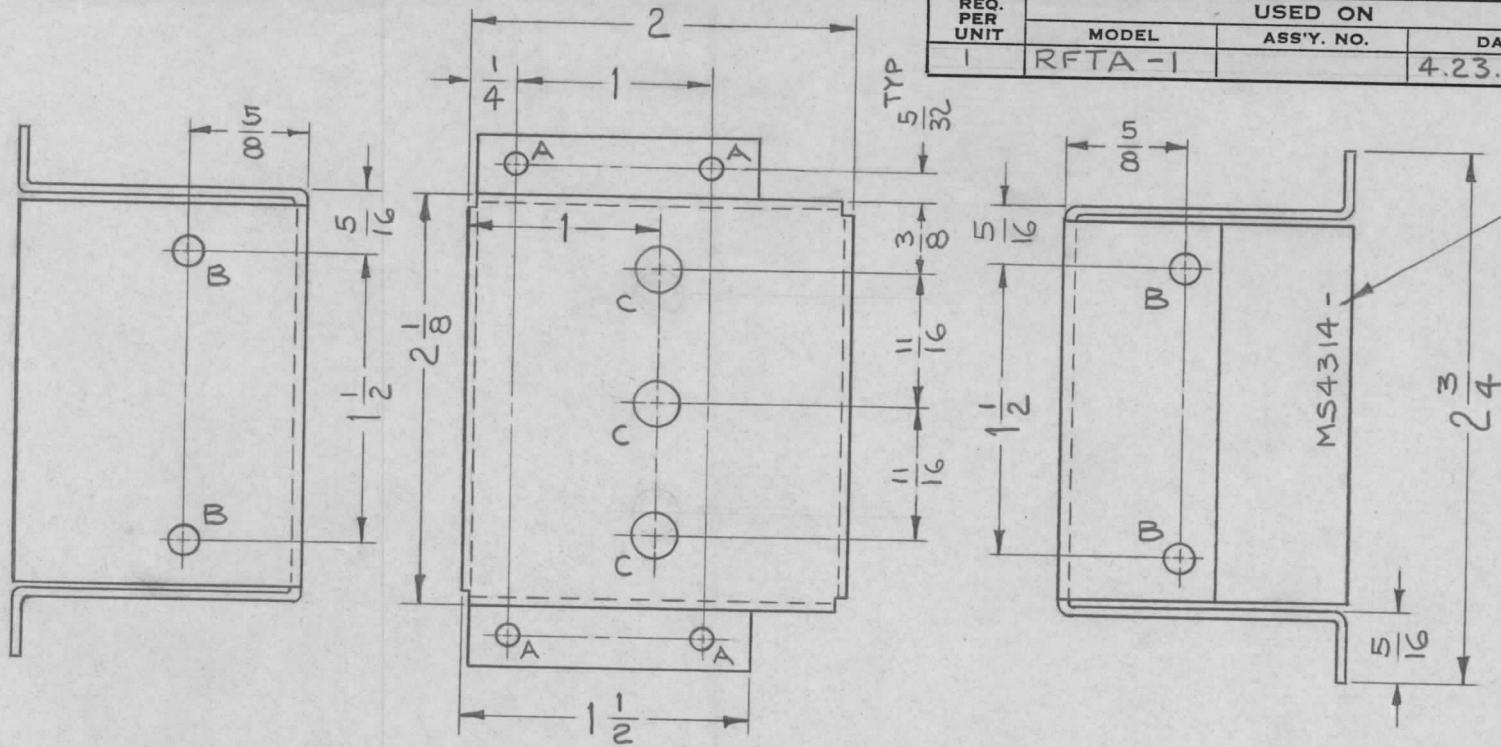


REQ. PER UNIT	USED ON			MS4314	Ø
	MODEL	ASS'Y. NO.	DATE		
1	RFTA-1		4.23.1965		



MARK TMC PART NO. 1/8 HIGH GOTHIC, WITH LATEST REVISION LETTER.

HOLE	DESCRIPTION	REQ
A	1/8 DIA	4
B	5/32 DIA	4
C	1/4 DIA	3

UNLESS OTHERWISE SPECIFIED:

1. USE MATERIAL THICKNESS FOR MAXIMUM RADIUS ON ALL BENDS
2. ALL ANGULAR BENDS 90 DEGREES
3. REMOVE ALL BURRS AND SHARP EDGES

REF: LD1767

SYM	DESCRIPTION	DATE	CH. NO.	DRAFTS	CHECKER	ENG. APP.	REQ. ITEM	PART NO.	F. BUDETTI	DESCRIPTION	SYMBOL
Ø	ORIGINAL RELEASE FOR PRODUCTION	6.7.66	Ø	WHD		File	.064 THICK		THE TECHNICAL MATERIEL CORP.		
X ₂	COMPL. REVISED, WAS 2 SIZE	4.23.65	X ₂	LSB			STOCK SIZE		MAMARONECK, NEW YORK		
							ALUMINUM		CHASSIS, SENSING		
							MATERIAL				
							5052 - H32		WOB	JCB	02.03
							TYPE & TEMPER		DRAWN	CHECKED	FINAL APPROVAL
							S404 YEL. IRIDITE		RIB	AL	MS4314
							FINISH & SPEC. NO.		ELEC. DES. APP.	MECH. DES. APP.	
									ML		

UNLESS OTHERWISE SPECIFIED DIMENSIONS ARE IN INCHES AND INCLUDE CHEMICALLY APPLIED OR PLATED FINISHES

DECIMALS
 .X ± .05
 .XX ± .01
 .XXX ± .005

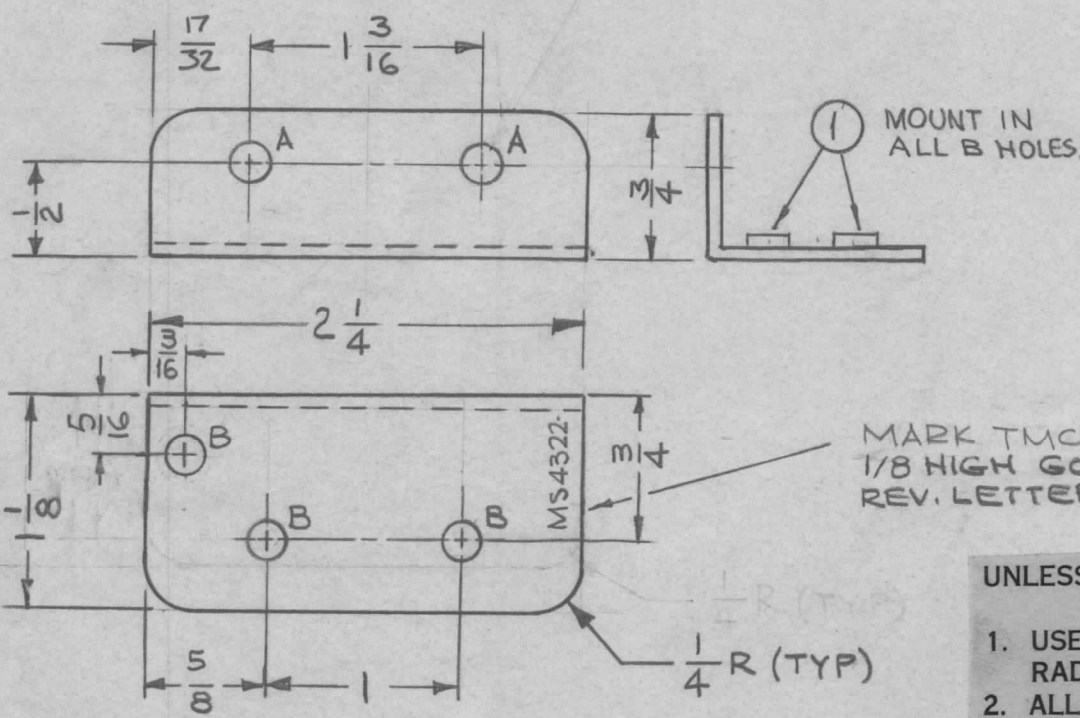
FRACTIONS
 ± 1/64
 ANGLES
 ± 0° 30'

TOLERANCES

SCALE 1:1

CODE A

REQ. PER UNIT	USED ON			MS4322	Ø
	MODEL	ASS'Y. NO.	DATE		
1 EA	RFTA-1	A5348	1-6-65		



HOLES	DESCRIPTION	REQ
A	13/64 DIA.	2
B	221-.224 DIA.	3

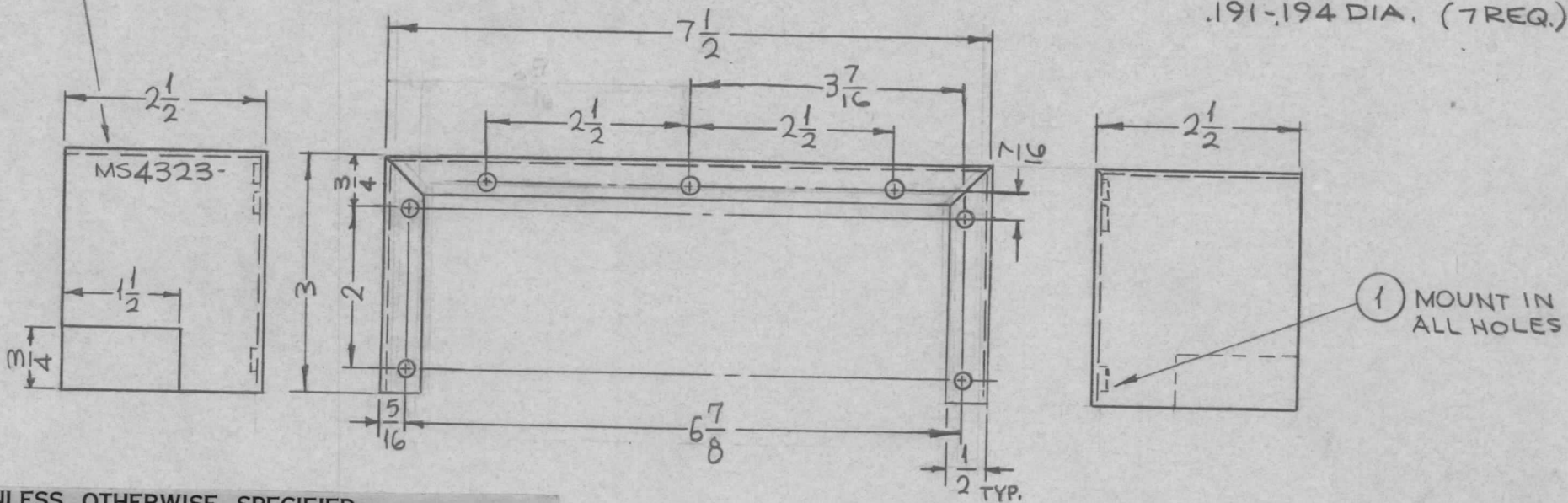
MARK TMC PART NUMBER 1/8 HIGH GOTHIC W/LATEST REV. LETTER.

- UNLESS OTHERWISE SPECIFIED:
1. USE MATERIAL THICKNESS FOR MAXIMUM RADIUS ON ALL BENDS
 2. ALL ANGULAR BENDS 90 DEGREES
 3. REMOVE ALL BURRS AND SHARP EDGES
 4. MOUNT INSERTS AFTER FINISHING

						3	1	NT129-832-4	NUT, PLAIN, SPLINE	B	
						REQ. ITEM		PART NO.	F. BUDETTI DESCRIPTION	SYMBOL	
Ø	ORIGINAL RELEASE FOR PRODUCTION	5/20/66	Ø	C.V	file	.081 THK		THE TECHNICAL MATERIEL CORP. MAMARONECK. NEW YORK			
X	EXPER. RELEASE	1.6.65	X	bb		ALUMINUM		BRACKET, MTG, CAPACITOR			
SYM	DESCRIPTION	DATE	CH. NO.	DRAFTS	CHECKER	ENG. APP.	MATERIAL				
UNLESS OTHERWISE SPECIFIED DIMENSIONS ARE IN INCHES AND INCLUDE CHEMICALLY APPLIED OR PLATED FINISHES		SCALE 1:1				5052 H-32		W/B 1.6.65	JCB	DB	Milkey
DECIMALS .X ± .05 .XX ± .01 .XXX ± .005	TOLERANCES	FRACTIONS ± 1/64 ANGLES ± 0° 30'	CODE A	TYPE & TEMPER		HEAT TREAT. SPEC.	DRAWN	CHECKED	FINAL APPROVAL		
				S245 SILVER PLATE S423 SILVER KOTE			00 6/19/66		MS4322 Ø		
				FINISH & SPEC. NO.			ELEC. DES. APP.	MECH. DES. APP.			

REQ. PER UNIT	USED ON			MS4323	Ø
	MODEL	ASS'Y. NO.	DATE		
1	RFTA-1		1-26-65		

MARK TMC PART NO. NO
1/8 HIGH GOTHIC W/LATEST
REV. LETTER.

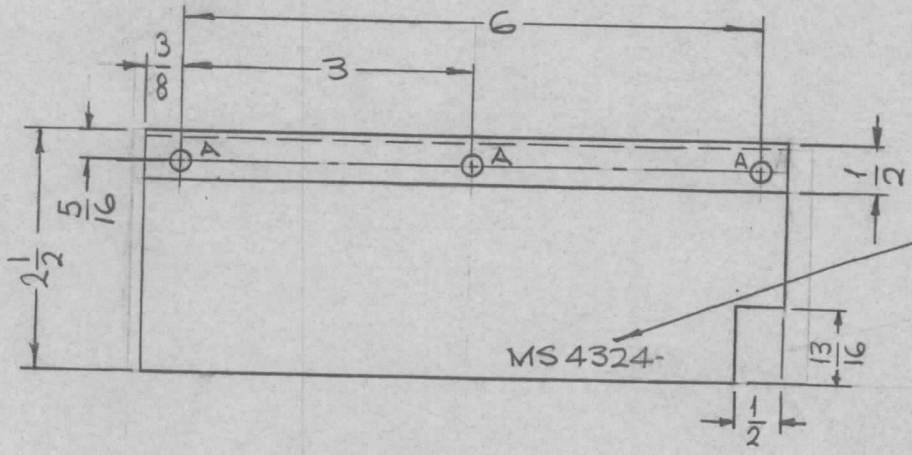


UNLESS OTHERWISE SPECIFIED:

1. USE MATERIAL THICKNESS FOR MAXIMUM RADIUS ON ALL BENDS
2. ALL ANGULAR BENDS 90 DEGREES
3. REMOVE ALL BURRS AND SHARP EDGES
4. MOUNT INSERTS AFTER FINISHING

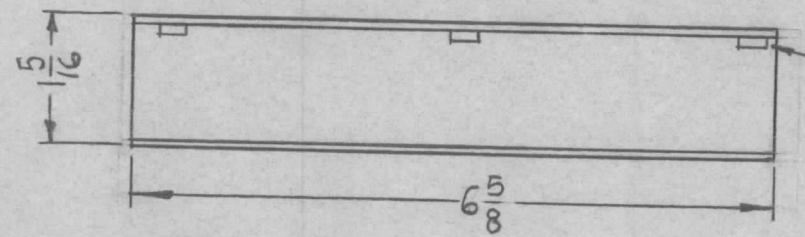
Ø	ORIGINAL RELEASE FOR PRODUCTION	6-23-66	#	WHD			1	1	NT 129-632-3	NUT, PLAIN, SPLINE		
X ₁	HOLES OFF WERE 3 7/16 FROM EDGE	7-28-65	X ₁	SRG					.054 THICK	F. BUDETTI DESCRIPTION	SYMBOL	
X	EXP. RELEASE	1-26-65	X	SRG					STOCK SIZE	THE TECHNICAL MATERIEL CORP.		
SYM	DESCRIPTION	DATE	CH. NO.	DRAFTS	CHECKER	ENG. APP.			ALUMINUM	MAMARONECK, NEW YORK		
	UNLESS OTHERWISE SPECIFIED DIMENSIONS ARE IN INCHES AND INCLUDE CHEMICALLY APPLIED OR PLATED FINISHES	SCALE									SHIELD, METERS	
	DECIMALS .X ± .05 .XX ± .01 .XXX ± .005	FRACTIONS ± 1/64 ANGLES ± 0° 30'	CODE							5052-432	SRG	QCB
	TOLERANCES		A							TYPE & TEMPER	CHECKED	FINAL APPROVAL
										5404 YEL. IRIDITE	DRAWN	MS4323
										FINISH & SPEC. NO.	ELEC. DES. APP.	Ø

REQ. PER UNIT	USED ON			MS4324	Ø
	MODEL	ASS'Y. NO.	DATE		
1	RFTA-1		1-7-65		



HOLES:
A ~ .191-.194 DIA. — 3REQ.

MARK STAMP TRI PART II
TMC PART NO.
1/8 HIGH GOTHIC
W/LATEST REV.
LETTER,



① MOUNT IN ALL A HOLES,

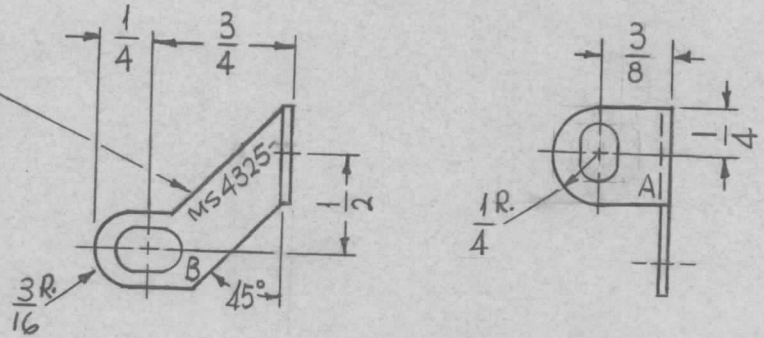
UNLESS OTHERWISE SPECIFIED:

1. USE MATERIAL THICKNESS FOR MAXIMUM RADIUS ON ALL BENDS
2. ALL ANGULAR BENDS 90 DEGREES
3. REMOVE ALL BURRS AND SHARP EDGES
4. MOUNT INSERTS AFTER FINISHING

Ø	ORIGINAL RELEASE FOR PRODUCTION	6.23.66	#	WHD			3	1	NT129-632-4	NUT, PLAIN, SPLINE	A
X1	CUTOUT ADDED, 6 7/8 WAS 7	1-15-65	x1	SRG					.054 THICK	F. BUDETTI	DESCRIPTION
X	EXP. RELEASE	1-7-65	X	SRG					ALUMINUM	THE TECHNICAL MATERIEL CORP. MAMARONECK, NEW YORK	
SYM	DESCRIPTION	DATE	CH. NO.	DRAFTS	CHECKER	ENG. APP.			MATERIAL	SHIELD, CAPACITORS	
UNLESS OTHERWISE SPECIFIED DIMENSIONS ARE IN INCHES AND INCLUDE CHEMICALLY APPLIED OR PLATED FINISHES						SCALE					
						1/2:1					
TOLERANCES						CODE					
.X ± .05						A					
.XX ± .01											
.XXX ± .005											
							5052-H32		SRG	QCB	Q. B. Miller
							TYPE & TEMPER	HEAT TREAT. SPEC.	DRAWN	CHECKED	FINAL APPROVAL
							S404 YELLOW IRIDITE		QD - 6/24/66		MS4324
							FINISH & SPEC. NO.	ELEC. DES. APP.	MECH. DES. APP.		Ø

REQ. PER UNIT	USED ON			MS4325	Ø
	MODEL	ASS'Y. NO.	DATE		
2	RFTA-1	A5348	1-20-65		

MARK TMC
PART NO. 3/32 HIGH
GOTHIC W/LATEST
REV. LETTER.



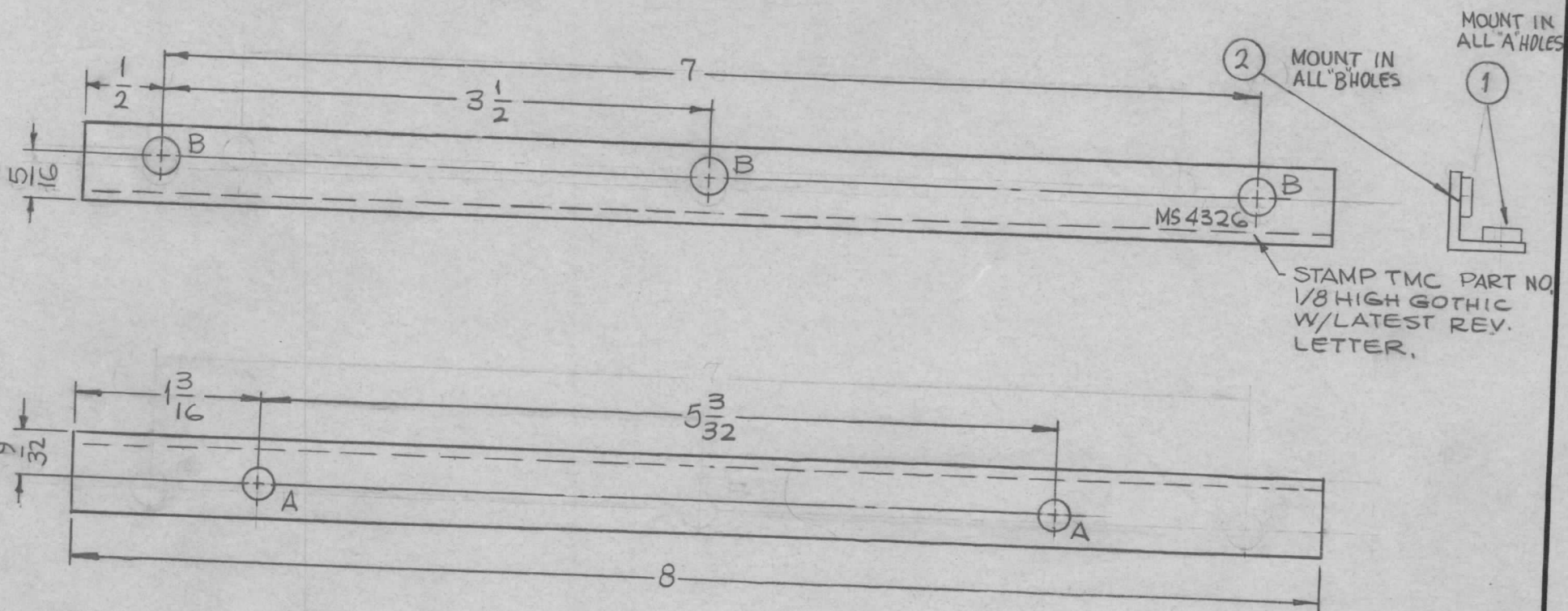
SLOT	DESCRIPTION	REQ.
A	3/16 X 5/16	1
B	7/32 X 5/16	1

UNLESS OTHERWISE SPECIFIED:

1. USE MATERIAL THICKNESS FOR MAXIMUM RADIUS ON ALL BENDS
2. ALL ANGULAR BENDS 90 DEGREES
3. REMOVE ALL BURRS AND SHARP EDGES
4. ROUND ALL CORNERS & EDGES.

Ø	ORIGINAL RELEASE	4-12-66	Ø	G.D.L.	Jde	REQ. ITEM	PART NO.	F. BUDETTI	DESCRIPTION	SYMBOL	
XI	TMC PT NO WAS 1/8 HIGH METAL STAMP ETC	4-5-66	-H	Jc		.040 THICK		THE TECHNICAL MATERIEL CORP. MAMARONECK, NEW YORK			
X	EXP. RELEASE	1-20-65	X	SRG		COPPER		LEAD, ELECTRICAL			
SYM	DESCRIPTION	DATE	CH. NO.	DRAFTS	CHECKER	ENG. APP.	MATERIAL	SOFT ROLLED	SRG	JCB	M. Han
UNLESS OTHERWISE SPECIFIED DIMENSIONS ARE IN INCHES AND INCLUDE CHEMICALLY APPLIED OR PLATED FINISHES		SCALE		1:1			TYPE & TEMPER	HEAT TREAT. SPEC.	DRAWN	CHECKED	FINAL APPROVAL
DECIMALS .X ± .05 .XX ± .01 .XXX ± .005	TOLERANCES	FRACTIONS ± 1/64 ANGLES ± 0° 30'	CODE	A			S245-SILVER PLATE S423-SILVER KOTE		QA 4-7-66	JCB	MS4325
							FINISH & SPEC. NO.	ELEC. DES. APP.	MECH. DES. APP.	Ø	

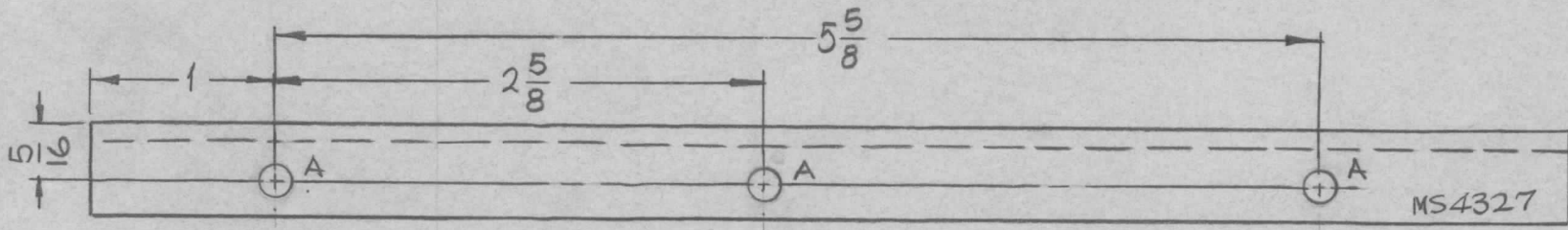
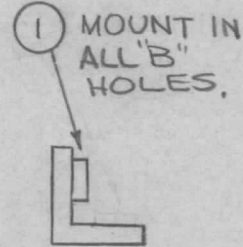
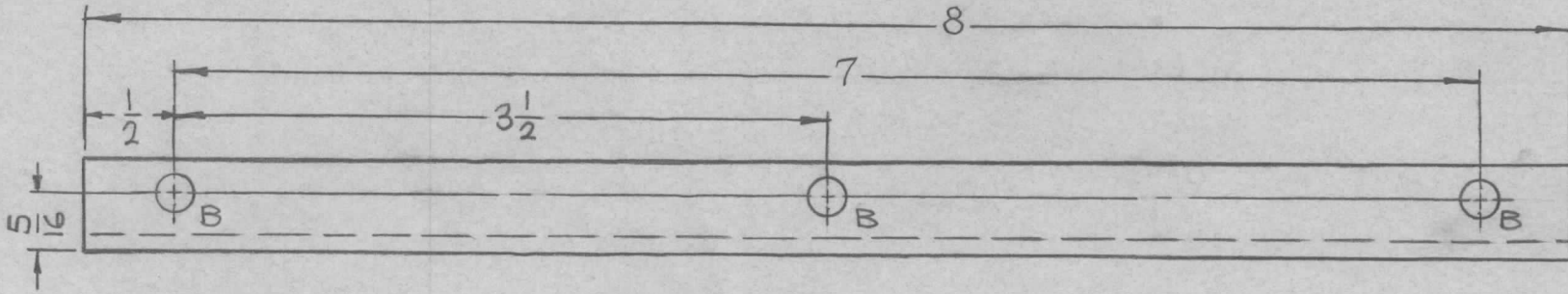
REQ. PER UNIT	USED ON			MS4326	Ø
	MODEL	ASS'Y. NO.	DATE		
1	RFTA-1		12-8-64		



HOLES
 A-.191-.194 DIA. (3REQ.)
 B-.221-.224 DIA. (3REQ.)

3	2	NT129-832-4	NUT, PLAIN, SPLINE		B		
3	1	NT129-632-4	NUT, PLAIN, SPLINE		A		
Ø	ORIGINAL RELEASE FOR PRODUCTION		5/19/66	Ø	CV	THE TECHNICAL MATERIEL CORP. MAMARONECK, NEW YORK BRACKET, ANGLE	
X ₁	5/16 WAS 7/32		12-18-64	x ₁	SRG		
X	EXP. RELEASE		12-8-64	X	SRG		
SYM	DESCRIPTION		DATE	CH. NO.	DRAFTS	CHECKER	ENG. APP.
UNLESS OTHERWISE SPECIFIED DIMENSIONS ARE IN INCHES AND INCLUDE CHEMICALLY APPLIED OR PLATED FINISHES			SCALE	1:1			
DECIMALS		FRACTIONS		CODE			
.X ± .05		± 1/64		A			
.XX ± .01		ANGLES					
.XXX ± .005		± 0° 30'					
TOLERANCES							
1/2 X 1/2 X .081		STOCK SIZE					
ALUMINUM		MATERIAL					
5052-H32		TYPE & TEMPER		HEAT TREAT. SPEC.		SRG	
S404 YELLOW IRIDITE		FINISH & SPEC. NO.		DRAWN		SRG	
				ELEC. DES. APP.		MECH. DES. APP.	
				5/19/66			
				MS4326		Ø	

REQ. PER UNIT	USED ON			MS4327	Ø
	MODEL	ASS'Y. NO.	DATE		
1	RFTA-1		12-10-64		



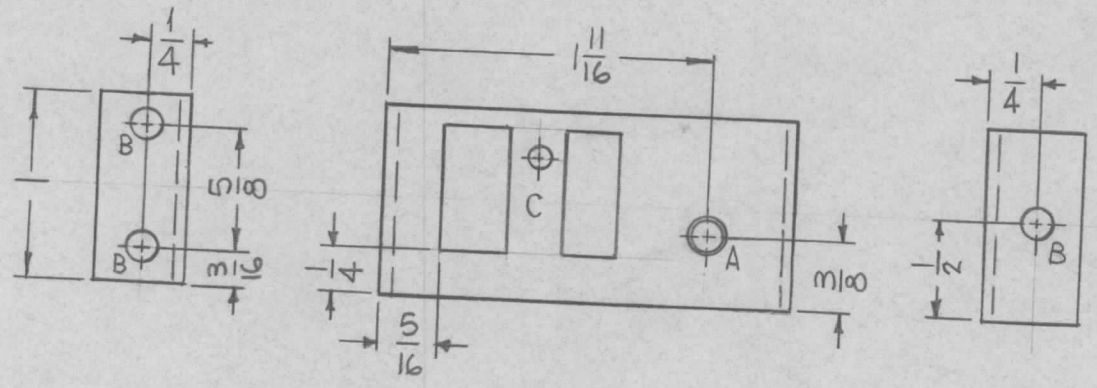
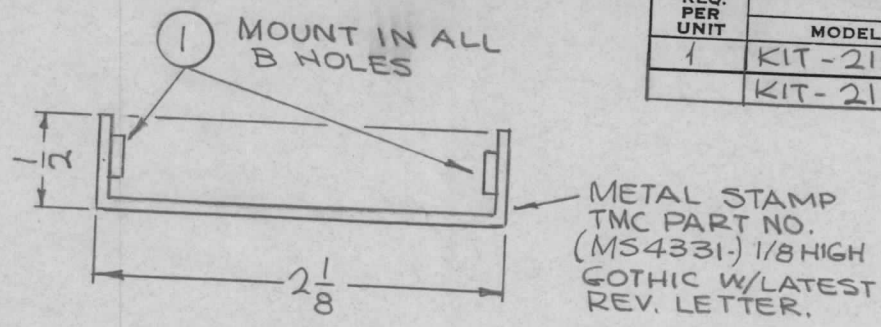
HOLES
 A - 11/64 DIA. (3 REQ.)
 B - .191-.194 DIA. (3 REQ.)

MARK TMC PART NO.
 1/8 HIGH GOTHIC W/LATEST
 REV. LETTER.

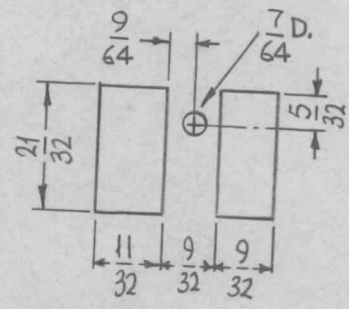
							3	1	NT129-632-6	NUT, PLAIN, SPLINE	B
							REQ.	ITEM	PART NO.	F. BUDETTI DESCRIPTION	SYMBOL
							1/2 X 1/2 X 1/8 \times			THE TECHNICAL MATERIEL CORP. MAMARONECK, NEW YORK	
							ALUMINUM			BRACKET, ANGLE	
							MATERIAL				
							5052-H32			SRG	
							TYPE & TEMPER HEAT TREAT. SPEC.			DRAWN CHECKED FINAL APPROVAL	
							S404 YELLOW IRIDITE			MS4327 Ø	
							FINISH & SPEC. NO.			ELEC. DES. APP. MECH. DES. APP.	
UNLESS OTHERWISE SPECIFIED DIMENSIONS ARE IN INCHES AND INCLUDE CHEMICALLY APPLIED OR PLATED FINISHES							SCALE 1:1				
DECIMALS .X ± .05 .XX ± .01 .XXX ± .005							TOLERANCES		FRACTIONS ± 1/64 ANGLES ± 0° 30'		CODE A

REQ. PER UNIT	USED ON		
	MODEL	ASS'Y. NO.	DATE
1	KIT-215	AX-546	2-25-65
	KIT-216	AX-546	2-25-65

MS4331 \emptyset



HOLES	DESCRIPTION	REQ.
A	.159±.002 BREAK TOP EDGES ONLY	1
B	.161-.164 DIA.	3
C	SEE DETAIL	1



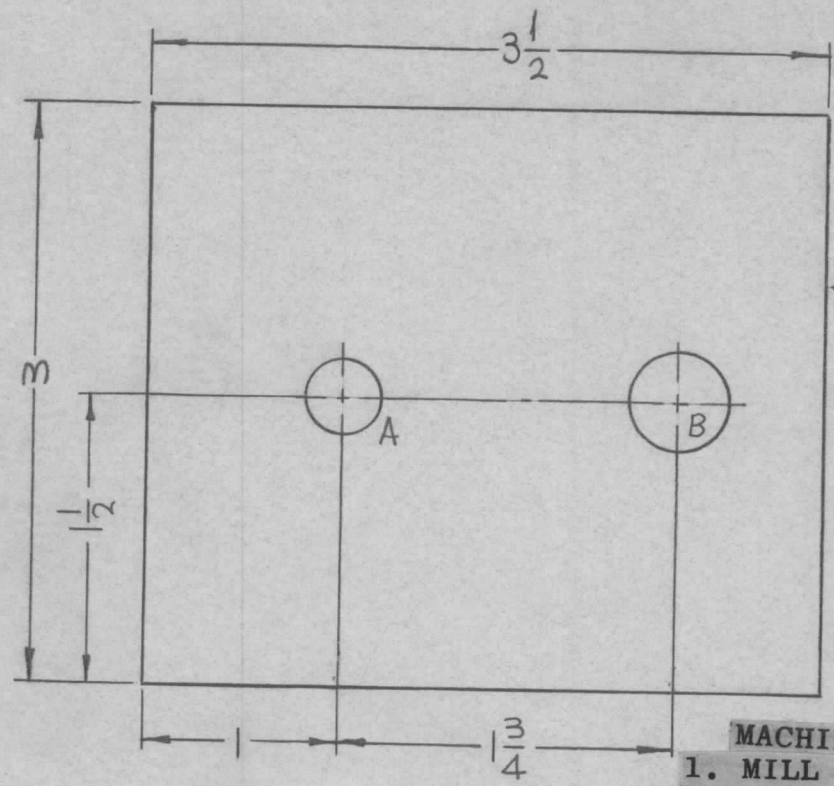
C-DETAIL

- UNLESS OTHERWISE SPECIFIED:
1. USE MATERIAL THICKNESS FOR MAXIMUM RADIUS ON ALL BENDS
 2. ALL ANGULAR BENDS 90 DEGREES
 3. REMOVE ALL BURRS AND SHARP EDGES
 4. MOUNT INSERTS AFTER FINISHING

REF: LD1773.

<input checked="" type="checkbox"/> ORIGINAL RELEASE FOR PRODUCTION <input checked="" type="checkbox"/> EXP. RELEASE		DATE: 3-2-65 CH. NO.: X DRAFTS: SRG CHECKER: [Signature] ENG. APP.: [Signature]	REQ. ITEM: 3 1 PART NO.: NT129-440-4 STOCK SIZE: .064 THICK MATERIAL: ALUMINUM TYPE & TEMPER: 5052-H32 FINISH & SPEC. NO.: S404 YEL. IRIDITE	DESCRIPTION: NUT, PLAIN, SPLINE THE TECHNICAL MATERIEL CORP. MAMARONECK, NEW YORK BRACKET, MTG. RELAY DRAWN: SRG CHECKED: [Signature] FINAL APPROVAL: [Signature]	B SYMBOL
UNLESS OTHERWISE SPECIFIED DIMENSIONS ARE IN INCHES AND INCLUDE CHEMICALLY APPLIED OR PLATED FINISHES		SCALE: 1:1 CODE: A	HEAT TREAT. SPEC.: ELEC. DES. APP.: MECH. DES. APP.:	MS4331 \emptyset	

REQ. PER UNIT	USED ON			MS4333 Ø
	MODEL	ASS'Y. NO.	DATE	
1	KIT-161		1-27-65	



HOLES	DESCRIPTION	REQ.
A	3/8 DIA.	1
B	1/2 DIA.	1

METAL STAMP TMC PART NO. (MS 4333)
1/8 HIGH GOTHIC W/LATEST
REV. LETTER ON REAR.

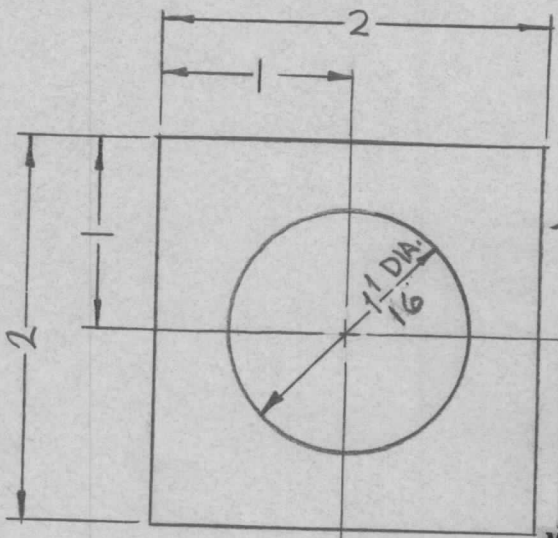
FINISH NOTES:
 1. S404 - IRIDITE 14-2 AL-COAT.
 2. S114 - ZINC CHROMATE PRIMER) FRONT AND
 3. S115 - SMOOTH GRAY ENAMEL) EDGES ONLY

MACHINING:
 1. MILL ALL EDGES.
 2. HOLES MUST BE DRILLED, UNLESS OTHERWISE SPECIFIED.
 3. LATERAL BOW OF PLATE MUST BE KEPT TO .031 TOLERANCE.
 4. PLATE MUST BE FREE OF ALL MACHINING MARKS, GOUGES AND SCRATCHES. IF NECESSARY, SAND FRONT WITH NO. 120 GRIT SANDPAPER.

REF: LD 1775

<input checked="" type="checkbox"/> ORIGINAL RELEASE FOR PRODUCTION <input checked="" type="checkbox"/> EXP. RELEASE		3-1-65 1-27-65	Ø X	SRG	7/8	REQ. ITEM PART NO. F. BUDETTI DESCRIPTION SYMBOL	.051 THICK STOCK SIZE ALUMINUM MATERIAL 5052-H32 TYPE & TEMPER HEAT TREAT. SPEC. SEE NOTE FINISH & SPEC. NO.	THE TECHNICAL MATERIEL CORP. MAMARONECK, NEW YORK PLATE, FRONT	SRG DRAWN CHECKED FINAL APPROVAL MS4333 Ø
SYM DESCRIPTION		DATE	CH. NO.	DRAFTS	CHECKER	ENG. APP.	SCALE 1:1		
UNLESS OTHERWISE SPECIFIED DIMENSIONS ARE IN INCHES AND INCLUDE CHEMICALLY APPLIED OR PLATED FINISHES		DECIMALS .X ± .05 .XX ± .01 .XXX ± .005		FRACTIONS ± 1/64 ANGLES ± 0° 30'		CODE A	TOLERANCES		

REQ. PER UNIT	USED ON			MS4334 \emptyset
	MODEL	ASS'Y. NO.	DATE	
1	KIT-161		1-27-65	



METAL STAMP TMC PART NO. (MS4334) 1/8 HIGH GOTHIC W/LATEST REV. LETTER. ON REAR.

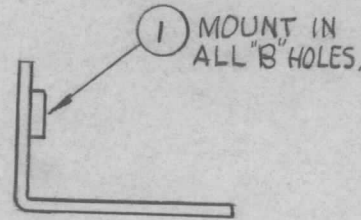
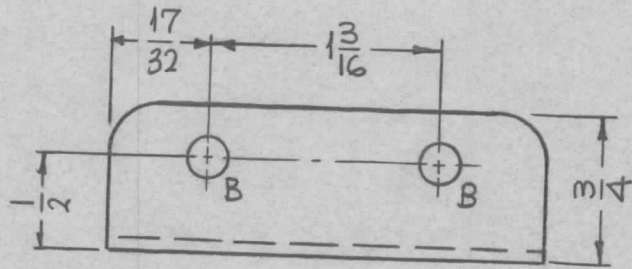
- FINISH NOTES:**
- 1. S404 - IRIDITE 14-2 AL-COAT.
 - 2. S114 - ZINC CHROMATE PRIMER) FRONT AND
 - 3. S115 - SMOOTH GRAY ENAMEL) EDGES ONLY

- MACHINING:**
- 1. MILL ALL EDGES.
 - 2. HOLES MUST BE DRILLED, UNLESS OTHERWISE SPECIFIED.
 - 3. LATERAL BOW OF PLATE MUST BE KEPT TO .031 TOLERANCE.
 - 4. PLATE MUST BE FREE OF ALL MACHINING MARKS, GOUGES AND SCRATCHES. IF NECESSARY, SAND FRONT WITH NO. 120 GRIT SANDPAPER.

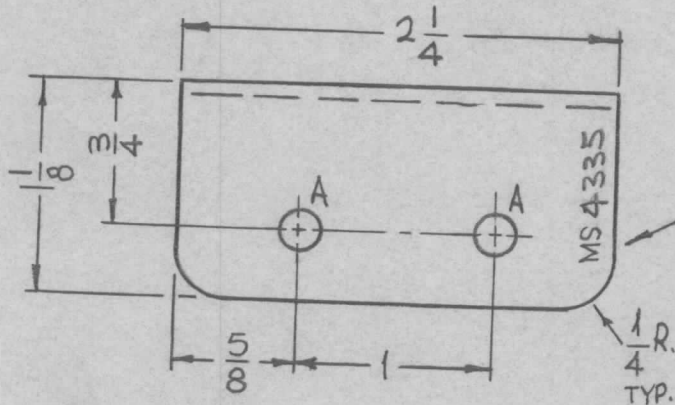
REF: LD 1776

							REQ. ITEM	PART NO.	F. BUDETTI	DESCRIPTION	SYMBOL
\emptyset	ORIGINAL RELEASE FOR PRODUCTION	3-1-65	\emptyset	P.L.	7/8		.051 THICK		THE TECHNICAL MATERIEL CORP. MAMARONECK. NEW YORK		
X	EXP. RELEASE	1-27-65	X	SRG			ALUMINUM		PLATE, FRONT		
SYM	DESCRIPTION	DATE	CH. NO.	DRAFTS	CHECKER	ENG. APP.	MATERIAL				
UNLESS OTHERWISE SPECIFIED DIMENSIONS ARE IN INCHES AND INCLUDE CHEMICALLY APPLIED OR PLATED FINISHES						SCALE	5052-H32		SRG	<i>all</i>	<i>RAL</i>
DECIMALS .X \pm .05 .XX \pm .01 .XXX \pm .005						TOLERANCES	TYPE & TEMPER	HEAT TREAT. SPEC.	DRAWN	CHECKED	FINAL APPROVAL
FRACTIONS \pm 1/64 ANGLES \pm 0° 30'						CODE	SEE NOTES				MS4334 \emptyset
							FINISH & SPEC. NO.	ELEC. DES. APP.	MECH. DES. APP.		

REQ. PER UNIT	USED ON			MS4335 \emptyset
	MODEL	ASS'Y. NO.	DATE	
1	RFTA-1	A5348	1-28-65	



HOLES	DESCRIPTION	REQ.
A	13/64 DIA.	2
B	.221-.224 DIA.	2



MARK TMC PART NUMBER
1/8 HIGH GOTHIC W/LATEST
REV. LETTER.

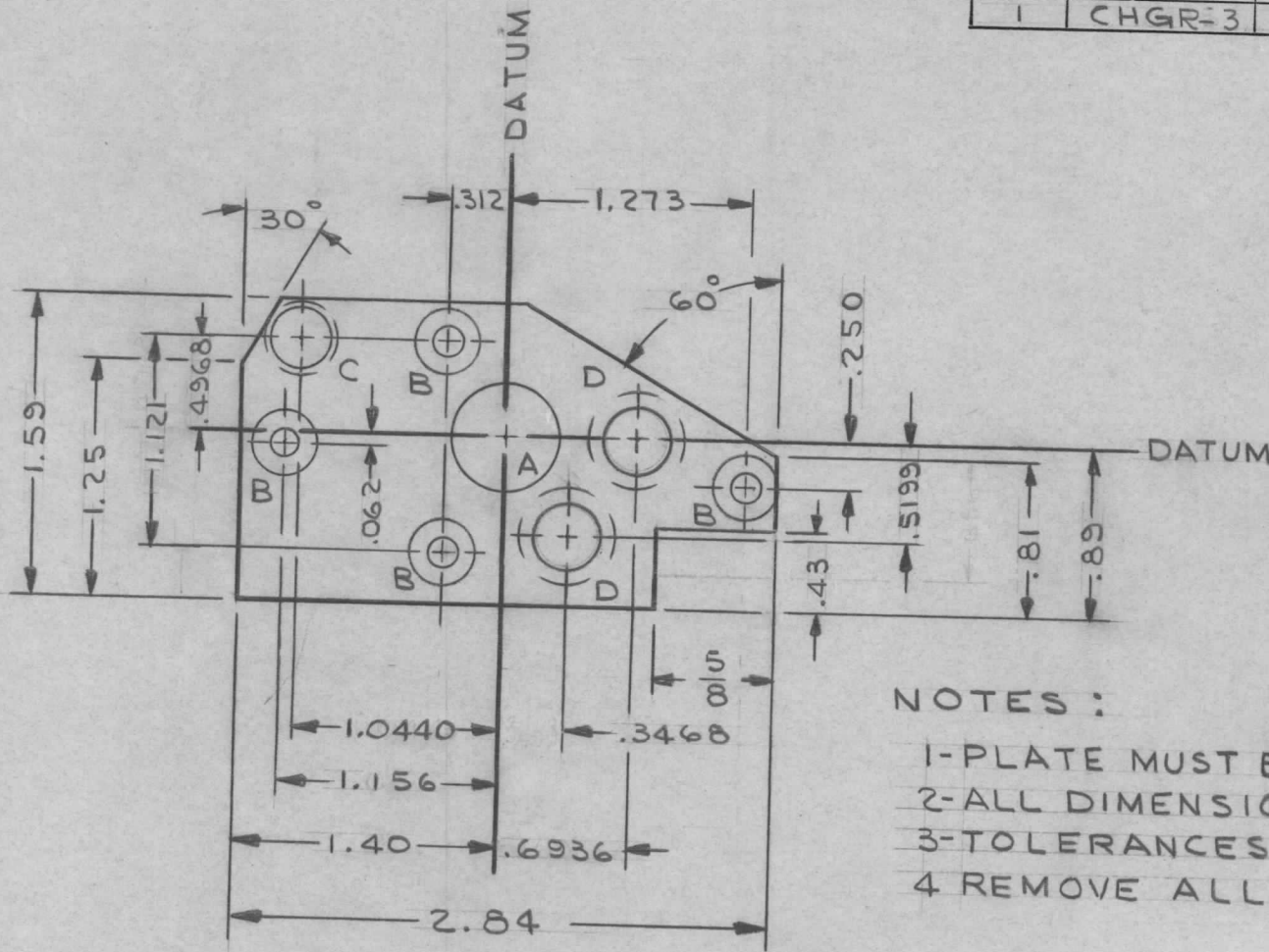
UNLESS OTHERWISE SPECIFIED:

1. USE MATERIAL THICKNESS FOR MAXIMUM RADIUS ON ALL BENDS
2. ALL ANGULAR BENDS 90 DEGREES
3. REMOVE ALL BURRS AND SHARP EDGES
4. MOUNT INSERTS AFTER FINISHING

2	1	NT 129-832-4	NUT, PLAIN, SPLINE			B
REQ.	ITEM	PART NO.	F. BUDETTI DESCRIPTION			SYMBOL
.081 THICK			THE TECHNICAL MATERIEL CORP.			
STOCK SIZE			MAMARONECK, NEW YORK			
ALUMINUM			BRACKET, CAPACITOR MTG.			
MATERIAL						
5052-H32			SRG	90/5	203	M. H. Key
TYPE & TEMPER		HEAT TREAT. SPEC.	DRAWN	CHECKED	FINAL APPROVAL	
5245 SILVER PLATE			aa 5/20/62	RS	MS4335 \emptyset	
5423 SILVER KOTE						
FINISH & SPEC. NO.			ELEC. DES. APP.	MECH. DES. APP.		
			ML 5/20/62	5/20/62		

UNLESS OTHERWISE SPECIFIED DIMENSIONS ARE IN INCHES AND INCLUDE CHEMICALLY APPLIED OR PLATED FINISHES	SCALE	1:1
DECIMALS .X \pm .05 .XX \pm .01 .XXX \pm .005	FRACTIONS \pm 1/64 ANGLES, \pm 0° 30'	CODE A
ORIGINAL RELEASE FOR PRODUCTION	5/20/66	\emptyset CV
EXP. RELEASE	1-28-65	X SRG
SYM	DESCRIPTION	DATE CH. NO. DRAFTS CHECKER ENG. APP.

REQ. PER UNIT	USED ON			MS 4337	Ø
	MODEL	ASS'Y. NO.	DATE		
1	CHGR-3	A4168	12-14-64		



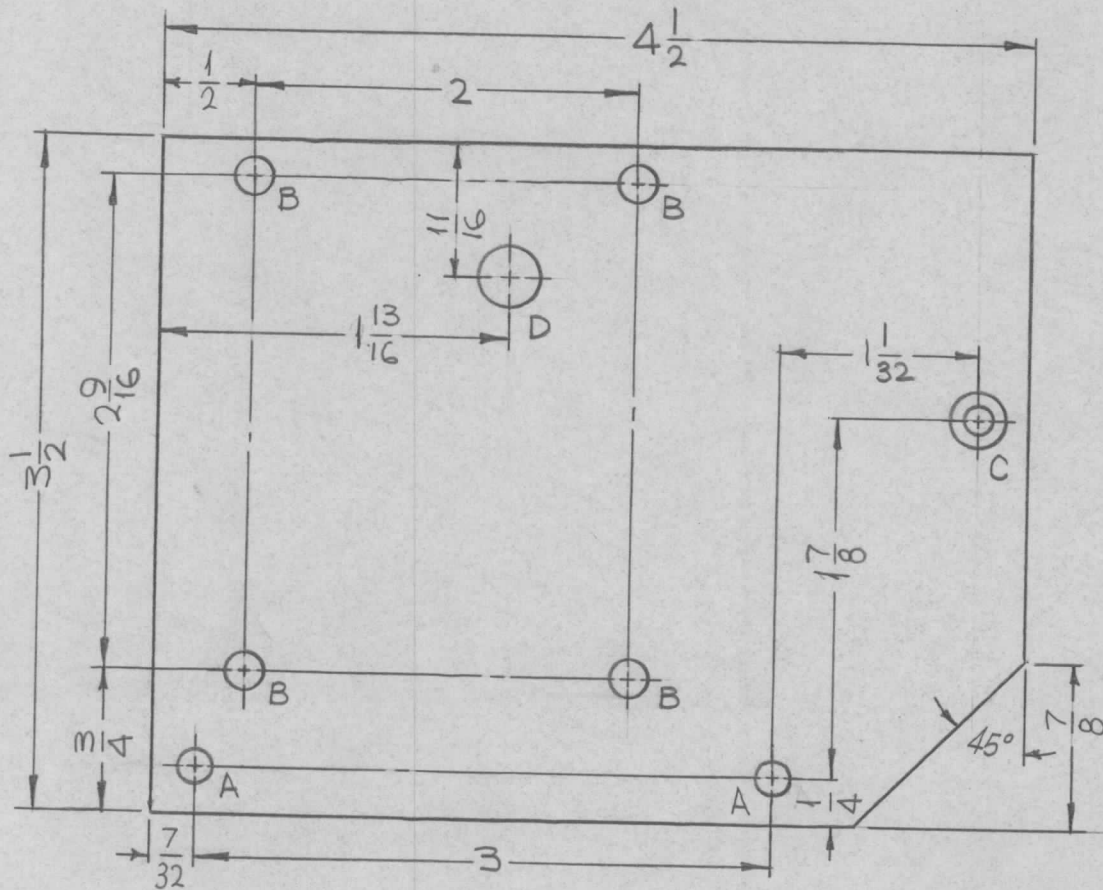
HOLE LEGEND		
HOLE	DESCRIPTION	REQ'D
A	.562 DIA THRU	1
B	.169 DIA & C'SINK .82° X .339 DIA	4
C	.312 DIA THRU & C'BORE .3749-.3752 X .128 ^{+0.002} _{-0.000} DP	1
D	.375 DIA THRU & C'BORE .4999-.5002 X .128 ^{+0.002} _{-0.000} DP	2

NOTES :

- 1-PLATE MUST BE FLAT WITHIN .003.
- 2-ALL DIMENSIONS START AT DATUM LINES.
- 3-TOLERANCES ON 4 PLACE DECIMAL ±.0005
- 4 REMOVE ALL BURRS & SHARP EDGES.

Ø	ORIGINAL RELEASE FOR PRODUCTION	3-30-65	Ø	JD			REQ. ITEM	PART NO.	J. ANGER	DESCRIPTION	SYMBOL
X1	MODEL WAS CHG-3 TYPE & TEMPER WAS 5052-H32	3-29-65		G.D.L	JM		.156 THICK		THE TECHNICAL MATERIEL CORP. MAMARONECK. NEW YORK		
X	"D" THRU HOLE WAS .312, REVISED .43 NOTCH	12/16/64		JL			ALUMINUM		PLATE GEAR, IDLER		
SYM	DESCRIPTION	DATE	CH. NO.	DRAFTS	CHECKER	ENG. APP.	MATERIAL				
UNLESS OTHERWISE SPECIFIED DIMENSIONS ARE IN INCHES AND INCLUDE CHEMICALLY APPLIED OR PLATED FINISHES		SCALE		1:1			2024-T4		J. LESHINSKI	JCS	MW/Kay 3/29/65
DECIMALS .X ± .05 .XX ± .01 .XXX ± .005	TOLERANCES	FRACTIONS ± 1/64 ANGLES ± 0° 30'	CODE	TYPE & TEMPER		HEAT TREAT. SPEC.	DRAWN	CHECKED	FINAL APPROVAL		
				YELLOW IRIDITE		Janger				MS 4337	
				FINISH & SPEC. NO.		ELEC. DES. APP.		MECH. DES. APP.		Ø	

REQ. PER UNIT	USED ON			MS4339 \emptyset
	MODEL	ASS'Y. NO.	DATE	
1	KIT-215	AX-546	2-25-65	



HOLES	DESCRIPTION	REQ.
A	11/64 DIA.	2
B	.191-.194 DIA.	4
C	DR.144 C'SINK 82°X.284 DIA	1
D	5/16 DIA.	1

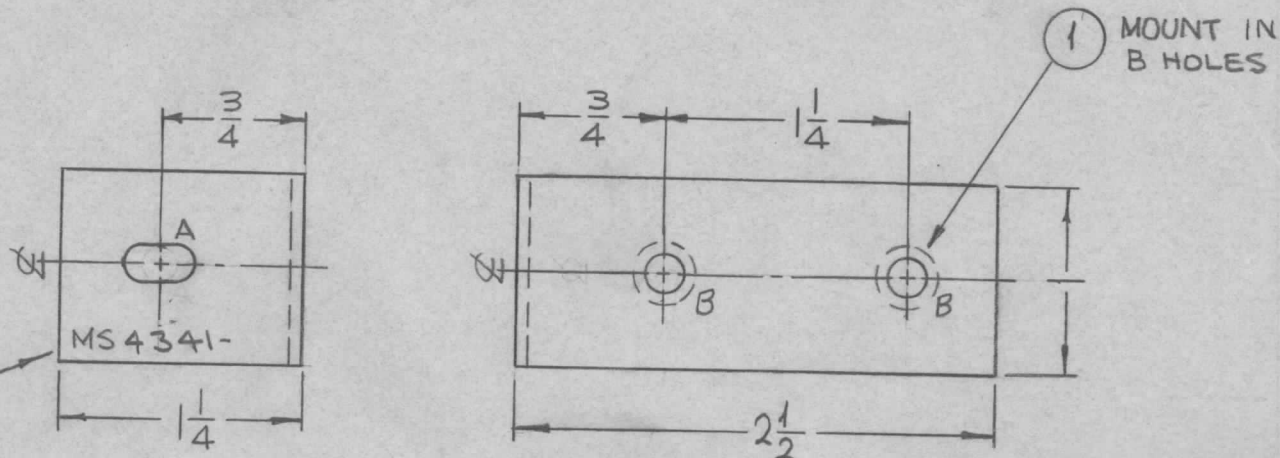
1 MOUNT IN ALL B HOLES.

METAL STAMP TMC PART NO. (MS4339) 1/8 HIGH GOTHIC W/LATEST REV. LETTER.

ORIGINAL RELEASE FOR PRODUCTION				3-2-65	<i>SRG</i>				4	1	NT129-632-4	NUT, PLAIN, SPLINE	B
EXP. RELEASE				2-25-65	X	SRG			REQ. ITEM	PART NO.	F. BUDETTI	DESCRIPTION	SYMBOL
UNLESS OTHERWISE SPECIFIED DIMENSIONS ARE IN INCHES AND INCLUDE CHEMICALLY APPLIED OR PLATED FINISHES				SCALE	1:1				.064 THICK STOCK SIZE				
TOLERANCES				FRACTIONS	ALUMINUM				THE TECHNICAL MATERIEL CORP. MAMARONECK, NEW YORK				
DECIMALS				CODE	5052-H32				PLATE, MTG. MAIN CHASSIS				
ANGLES					S404 YEL. IRIDITE				MATERIAL				
FINISHES					SRG				TYPE & TEMPER				
					SRG				HEAT TREAT. SPEC.				
					SRG				DRAWN				
					SRG				CHECKED				
					SRG				FINAL APPROVAL				
					SRG				MS4339 \emptyset				
					SRG				FINISH & SPEC. NO.				
					SRG				ELEC. DES. APP.				
					SRG				MECH. DES. APP.				

REQ. PER UNIT	USED ON			MS 4341 Ø
	MODEL	ASS'Y. NO.	DATE	
2	GPT-10K()7		2-5-65	

HOLES	DESCRIPTION	REQ.
A	3/16 X 3/8 SLOT	1
B	.191-.194 DIA.	2

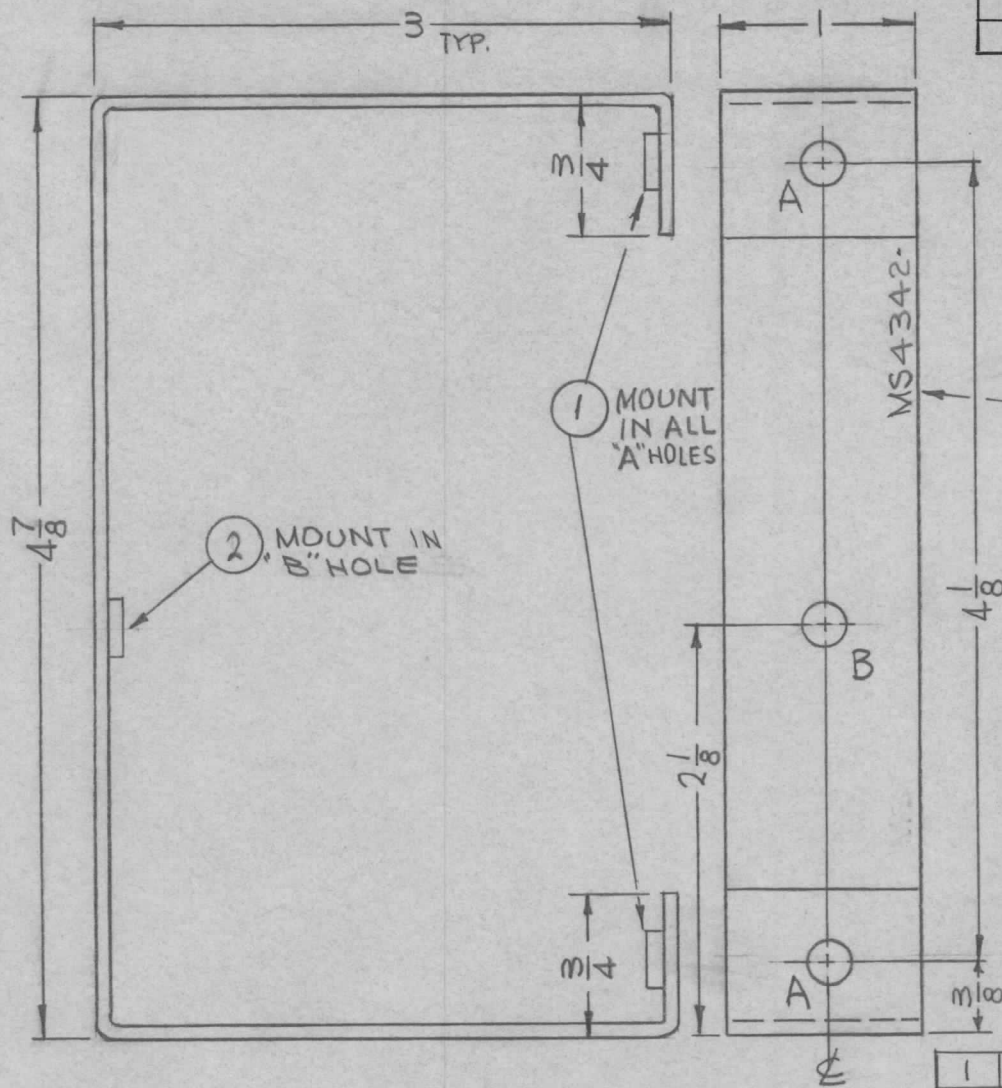


METAL STAMP TMC
PART NO., 1/8 HIGH
GOTHIC W/LATEST REV.
LETTER.

UNLESS OTHERWISE SPECIFIED:

1. USE MATERIAL THICKNESS FOR MAXIMUM RADIUS ON ALL BENDS
2. ALL ANGULAR BENDS 90 DEGREES
3. REMOVE ALL BURRS AND SHARP EDGES
4. MOUNT INSERTS AFTER FINISHING

SYM	DESCRIPTION	DATE	CH. NO.	DRAFTS	CHECKER	ENG. APP.	REQ. ITEM	PART NO.	DESCRIPTION	SYMBOL	
Ø	ORIGINAL RELEASE	8-20-65	Ø	GDL			2	1	NT129-632-4	NUT, PLAIN, SPLINE	B
X	EXP. RELEASE	2-5-65	X	SRG					1081 THICK	F. BUDETTI	
									STOCK SIZE	DESCRIPTION	
									ALUMINUM	THE TECHNICAL MATERIEL CORP. MAMARONECK, NEW YORK	
									MATERIAL	BRACKET, SHIELD MTG	
									5052-H32	SRG	
									TYPE & TEMPER	CHECKED	
									HEAT TREAT. SPEC.	FINAL APPROVAL	
									S404 YEL. IRIDITE		
									FINISH & SPEC. NO.	ELEC. DES. APP.	
										MECH. DES. APP.	
											MS 4341 Ø



REQ. PER UNIT	USED ON		MS4342 Ø
	MODEL	ASS'Y. NO.	
1	CPT-10K()7		2-5-65

HOLES:
 A-.191-.194 DIA. (2REQ.)
 B-.250-.253 DIA (1REQ.)

METAL STAMP TMC PART NO.
 1/8 HIGH GOTHIC W/LATEST
 REV. LETTER.

UNLESS OTHERWISE SPECIFIED:

1. USE MATERIAL THICKNESS FOR MAXIMUM RADIUS ON ALL BENDS
2. ALL ANGULAR BENDS 90 DEGREES
3. REMOVE ALL BURRS AND SHARP EDGES
4. MOUNT INSERTS AFTER FINISHING

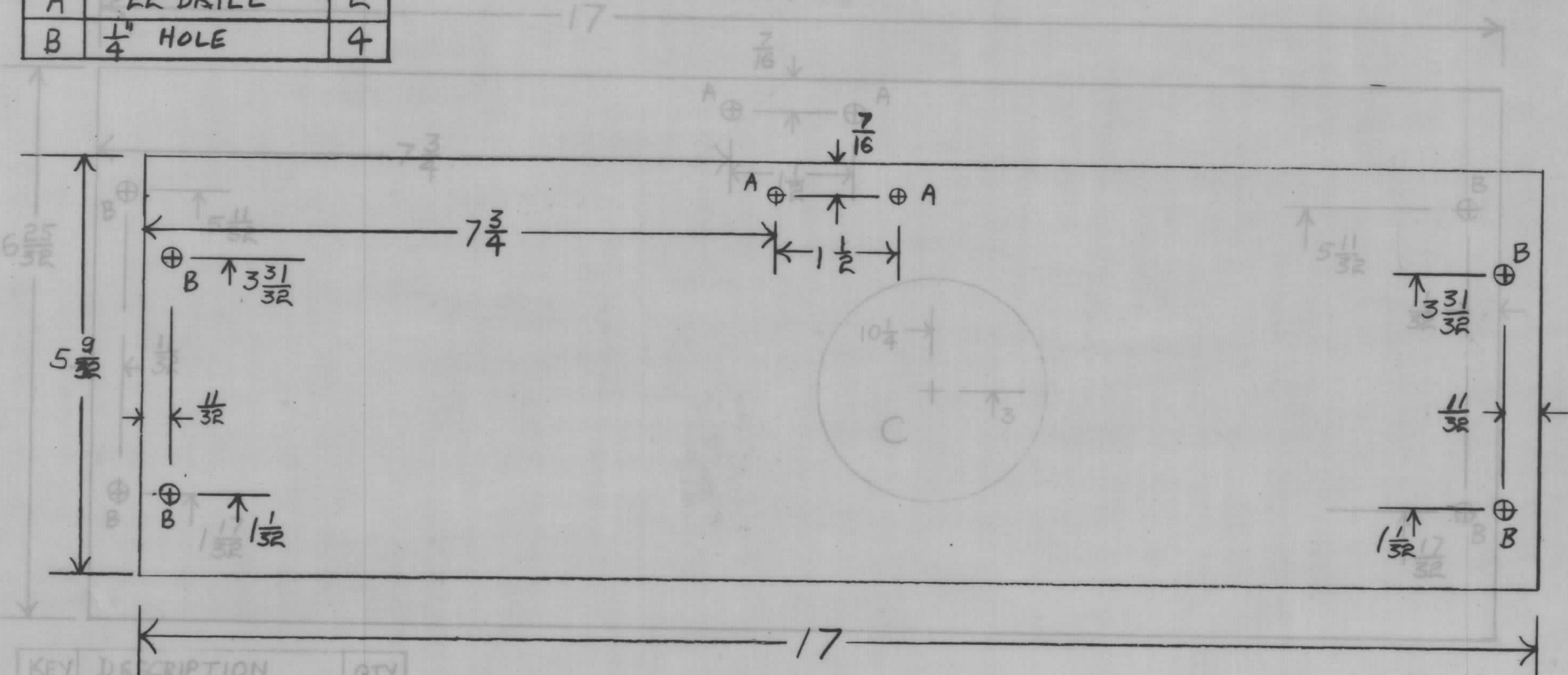
1	2	NT129-1032-4	NUT, PLAIN, SPLINE	B
2	1	NT129-632-4	NUT, PLAIN, SPLINE	A
REQ. ITEM		PART NO.	F. BUDETTI DESCRIPTION	SYMBOL

Ø	ORIGINAL RELEASE	8-20-65	Ø	GDL		
X	EXP. RELEASE	2-5-65	X	SRG		
SYM	DESCRIPTION	DATE	CH. NO.	DRAFTS	CHECKER	ENG. APP.
UNLESS OTHERWISE SPECIFIED DIMENSIONS ARE IN INCHES AND INCLUDE CHEMICALLY APPLIED OR PLATED FINISHES		SCALE		1:1		
DECIMALS	FRACTIONS	CODE				
.X ± .05	± 1/64	A				
.XX ± .01	ANGLES					
.XXX ± .005	± 0° 30'					

.081 THICK		THE TECHNICAL MATERIEL CORP.			
STOCK SIZE		MAMARONECK, NEW YORK			
ALUMINUM		BRACKET, SHIELD MTG.			
MATERIAL					
5052-H32		SRG	JCB	M. J. May 8/20/65	
TYPE & TEMPER	HEAT TREAT. SPEC.	DRAWN	CHECKED	FINAL APPROVAL	
S404 YEL, IRIDITE				MS4342 Ø	
FINISH & SPEC. NO.		ELEC. DES. APP.	MECH. DES. APP.		

REQ. PER UNIT	USED ON		DATE
	MODEL	ASS'Y. NO.	
	FSA		MS4356

KEY	DESCRIPTION	QTY
A	#22 DRILL	2
B	1/4" HOLE	4



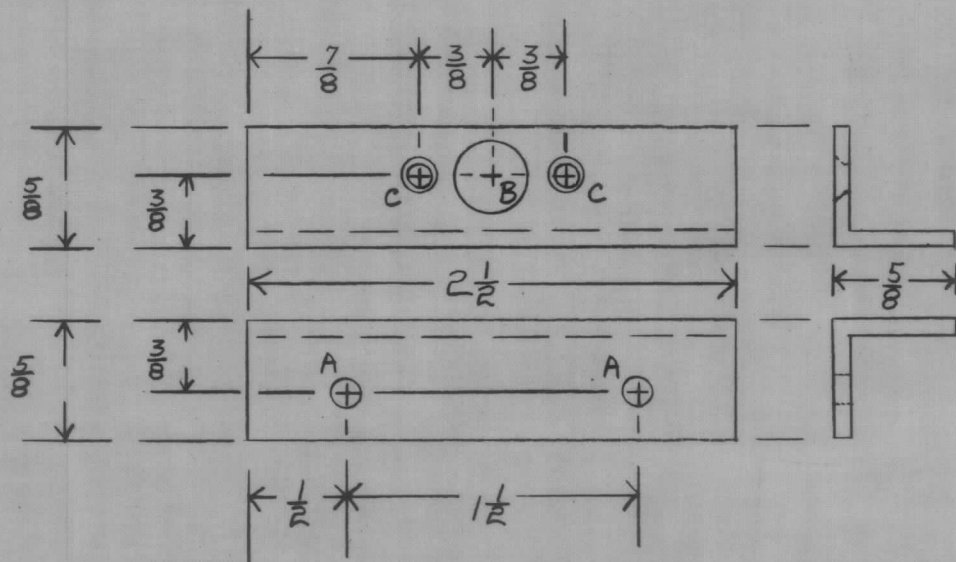
KEY	DESCRIPTION	QTY
A	#22 DRILL	2
B	1/4" HOLE	4
C	1" HOLE	1

SYM	DESCRIPTION	DATE	CH. NO.	DRAFTS	CHECKER	ENG. APP.	REQ. ITEM	PART NO.	DESCRIPTION	SYMBOL	
Ø	ORIGINAL RELEASE	7/15/69							.064 THICK STOCK SIZE	THE TECHNICAL MATERIEL CORP. MAMARONECK, NEW YORK COVER, REAR	
									ALUMINUM		
									MATERIAL		
	UNLESS OTHERWISE SPECIFIED DIMENSIONS ARE IN INCHES AND INCLUDE CHEMICALLY APPLIED OR PLATED FINISHES						SCALE				
									5052-H32		
									#14 IRIODITE		
									FINISH & SPEC. NO.		
									ELEC. DES. APP.		
									MECH. DES. APP.		
										FINAL APPROVAL	
										MS4356	

REQ. PER UNIT	USED ON		
	MODEL	ASS'Y. NO.	DATE
	FSA		

MS4358 ϕ

KEY	DESCRIPTION	QTY.
A	#22 DRILL	2
B	$\frac{3}{8}$ " HOLE	1
C	4-40 CKS	2



SYM	DESCRIPTION	DATE	CH. NO.	DRAFTS	CHECKER	ENG. APP.	REQ. ITEM	PART NO.	DESCRIPTION	SYMBOL	
ϕ	ORIGINAL RELEASE	7/15/69					.091 THICK STOCK SIZE		THE TECHNICAL MATERIEL CORP. MAMARONECK. NEW YORK		
							ALUMINUM MATERIAL		BRACKET, SUPPORT		
							5052-H32			SFM 7/15/69	
							TYPE & TEMPER	HEAT TREAT. SPEC.	DRAWN	CHECKED	FINAL APPROVAL
							# 14 IRIDIOTE				MS4358 ϕ
							FINISH & SPEC. NO.	ELEC. DES. APP.	MECH. DES. APP.		

UNLESS OTHERWISE SPECIFIED
DIMENSIONS ARE IN INCHES AND INCLUDE
CHEMICALLY APPLIED OR PLATED FINISHES

DECIMALS
.X $\pm .05$
.XX $\pm .01$
.XXX $\pm .005$

FRACTIONS
 $\pm 1/64$
ANGLES
 $\pm 0^{\circ} 30'$

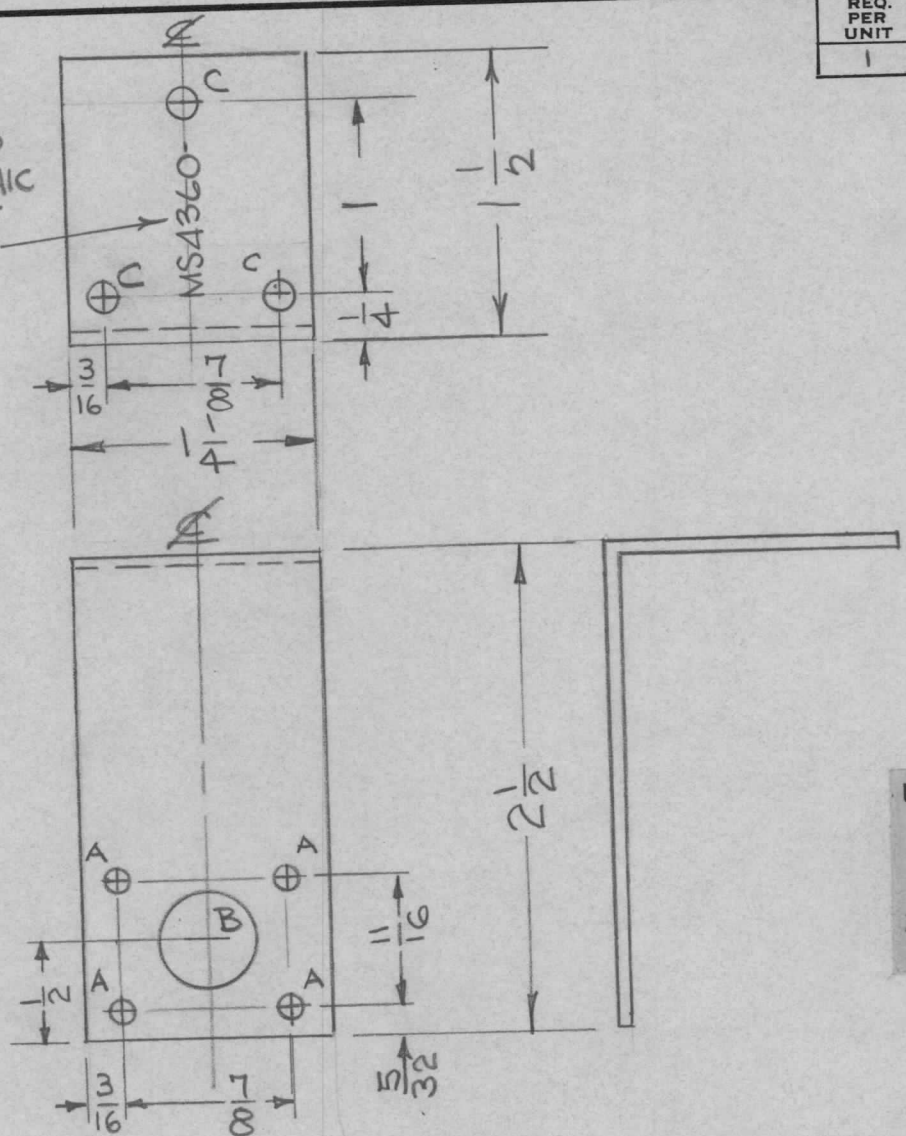
TOLERANCES

SCALE

CODE

S401- (A1059)

MARK TMC
PT. NO. 1/8
HIGH GOTHIC
W/LATEST
REVISION
LETTER



- A - 1/8 DIA 4 REQ
- B - 1/2 DIA 1 REQ
- C - 5/32 DIA 3 REQ

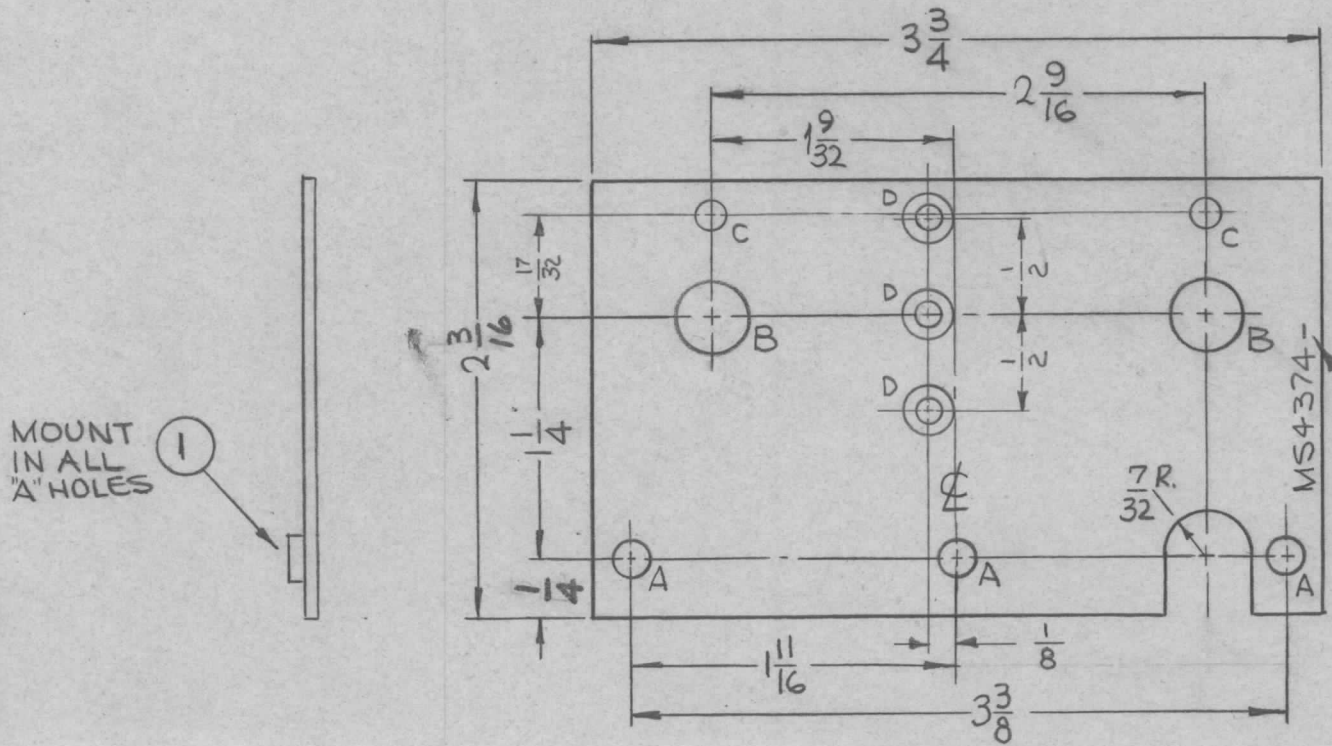
UNLESS OTHERWISE SPECIFIED:

1. USE MATERIAL THICKNESS FOR MAXIMUM RADIUS ON ALL BENDS
2. ALL ANGULAR BENDS 90 DEGREES
3. REMOVE ALL BURRS AND SHARP EDGES

REQ. PER UNIT	USED ON			MS4360	Ø
	MODEL	ASS'Y. NO.	DATE		
1	SBS-1				

REQ.	ITEM	PART NO.	DESCRIPTION			SYMBOL
		064.	THE TECHNICAL MATERIEL CORP. MAMARONECK. NEW YORK			
		STOCK SIZE	BRACKET, RELAY, ;			
		ALUMINUM	SUPPORT			
Ø	ORIGINAL RELEASE	9/26/69	Q			
SYM	DESCRIPTION	DATE	CH. NO.	DRAFTS	CHECKER	ENG. APP.
UNLESS OTHERWISE SPECIFIED DIMENSIONS ARE IN INCHES AND INCLUDE CHEMICALLY APPLIED OR PLATED FINISHES		SCALE				
DECIMALS .X ± .05 .XX ± .01 .XXX ± .005	TOLERANCES	FRACTIONS ± 1/64 ANGLES ± 0° 30'	CODE			
		5052-H32			JAD	9/26/69
		TYPE & TEMPER	HEAT TREAT. SPEC.	DRAWN	CHECKED	FINAL APPROVAL
		S404 YELLOW IRIDITE				MS4360
		FINISH & SPEC. NO.	ELEC. DES. APP.	MECH. DES. APP.		
		M/L				

REQ. PER UNIT	USED ON		MS4374 Ø
	MODEL	ASS'Y. NO.	
1	RFTA-1		1-28-65



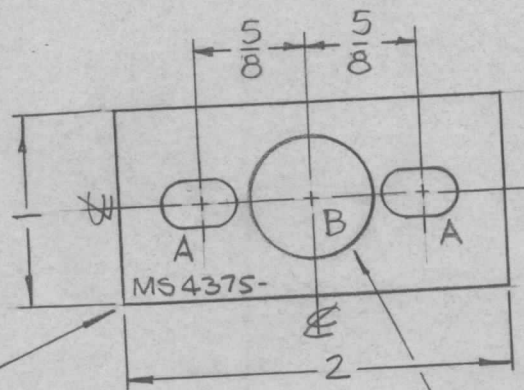
HOLES	DESCRIPTION	REQ
A	.191-.194 DIA.	3
B	3/8 DIA.	2
C	9/64 DIA.	2
D	DRILL .120 D. CSINK 82° TO .230 D.	3

MARK TMC PART NO. IN 1/8 HIGH GOTHIC, WITH LATEST REV. LETTER

3	1	NT129-G32-4	NUT, PLAIN, SPLINE	A
REQ. ITEM	PART NO.		F. BUDETTI DESCRIPTION	SYMBOL
Ø	ORIGINAL RELEASE FOR PRODUCTION		.081 THICK	
X ₁	"C" & "D" - HOLES ADDED		STOCK SIZE	
X	EXP. RELEASE		ALUMINUM	
SYM	DESCRIPTION		MATERIAL	
UNLESS OTHERWISE SPECIFIED DIMENSIONS ARE IN INCHES AND INCLUDE CHEMICALLY APPLIED OR PLATED FINISHES		SCALE	5052-H32	
		1:1	TYPE & TEMPER	HEAT TREAT. SPEC.
DECIMALS .X ± .05 .XX ± .01 .XXX ± .005		FRACTIONS ± 1/64 ANGLES ± 0° 30'	S404 YEL. IRIDITE	
TOLERANCES		CODE A	FINISH & SPEC. NO.	ELEC. DES. APP. MECH. DES. APP.
			SRG	QC/B 2/8
			DRAWN	CHECKED
			FINAL APPROVAL	
			MS4374 Ø	

REQ. PER UNIT	USED ON			MS4375 \emptyset
	MODEL	ASS'Y. NO.	DATE	
1	TSTE-10K	AX580	2-4-65	

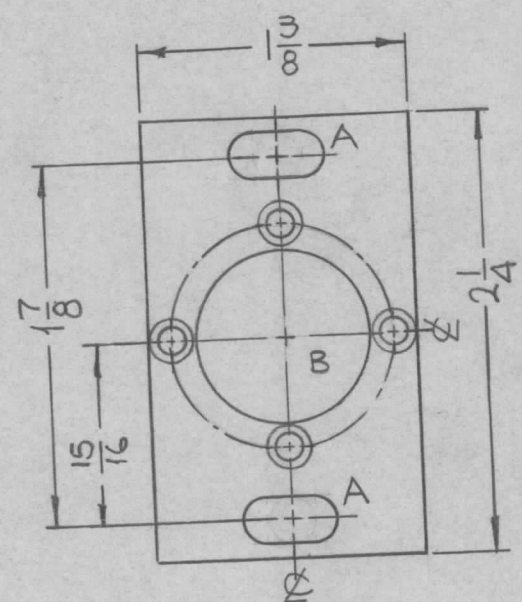
HOLES	DESCRIPTION	REQ
A	3/16 X 3/8 SLOTS	2
B	.625 \pm .002	1



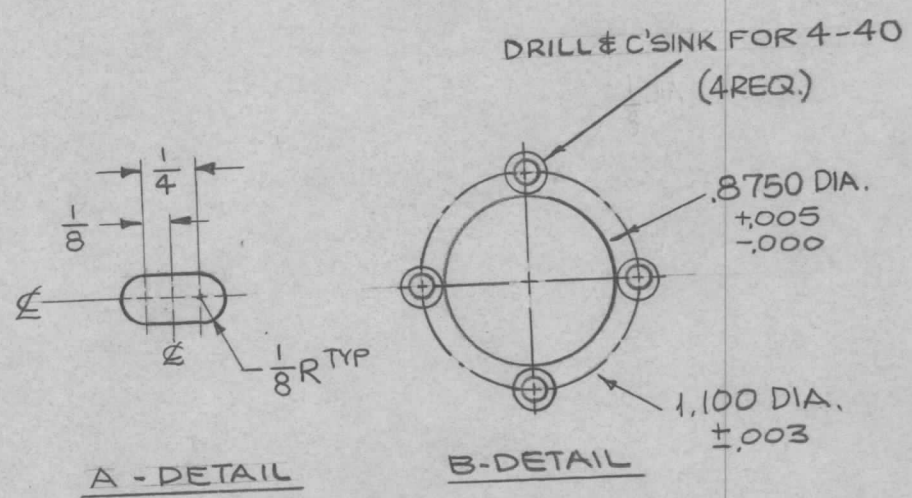
NEED MARK TMC PART NO.
1/8 HIGH GOTHIC W/LATEST
REV. LETTER.

\emptyset	ORIGINAL RELEASE FOR PRODUCTION	5/20/66	\emptyset	CV					1	1	BB126-5	BEARING, RACE			
X1	A SLOTS WERE 1/4 X 3/8 B HOLE DIM. ADDED	5-11-65	X1	SRG	DA						5/32 THICK	F. BUDETTI	DESCRIPTION	SYMBOL	
X	EXP. RELEASE	2-4-65	X	SRG							ALUMINUM	THE TECHNICAL MATERIEL CORP. MAMARONECK. NEW YORK			
SYM	DESCRIPTION	DATE	CH. NO.	DRAFTS	CHECKER	ENG. APP.	MATERIAL				2024-T3	SRG	QC	2B	MMK
UNLESS OTHERWISE SPECIFIED DIMENSIONS ARE IN INCHES AND INCLUDE CHEMICALLY APPLIED OR PLATED FINISHES		SCALE		1:1			TYPE & TEMPER		HEAT TREAT. SPEC.		DRAWN		CHECKED		FINAL APPROVAL
DECIMALS .X \pm .05 .XX \pm .01 .XXX \pm .005		TOLERANCES		FRACTIONS \pm 1/64 ANGLES \pm 0° 30'		CODE		FINISH & SPEC. NO.		ELEC. DES. APP.		MECH. DES. APP.		MS4375 \emptyset	
										5/19/66				REPROVAL NO. 440H	

REQ. PER UNIT	USED ON			MS4376 Ø
	MODEL	ASS'Y. NO.	DATE	
1	RFTA-1		12-2-64	



HOLES	DESCRIPTION	REQ.
A	SEE DETAIL	2
B	SEE DETAIL	1

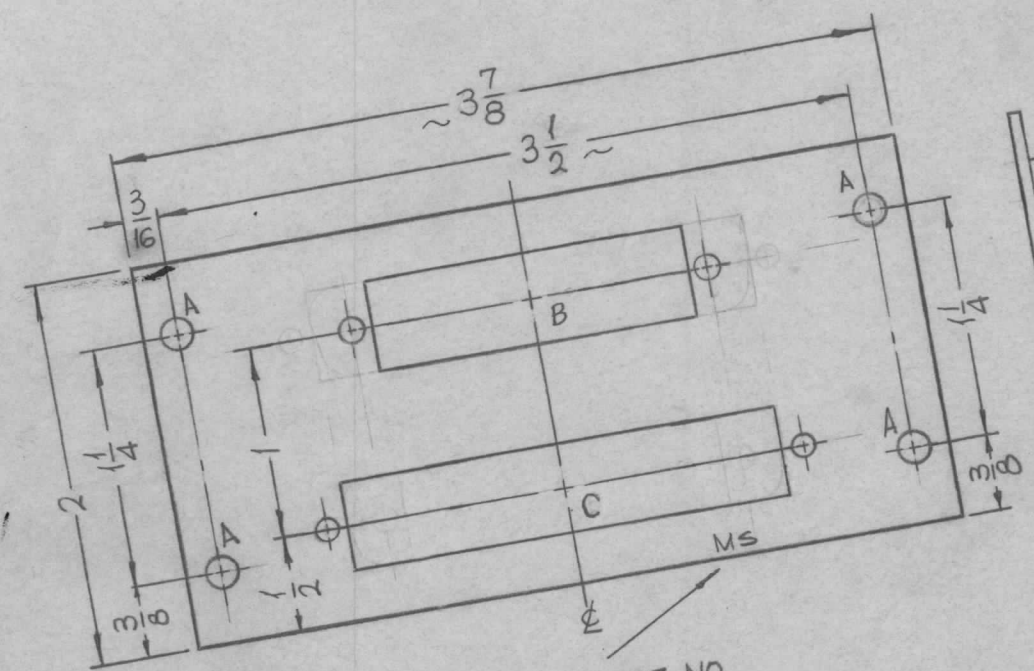


REF: LD1943

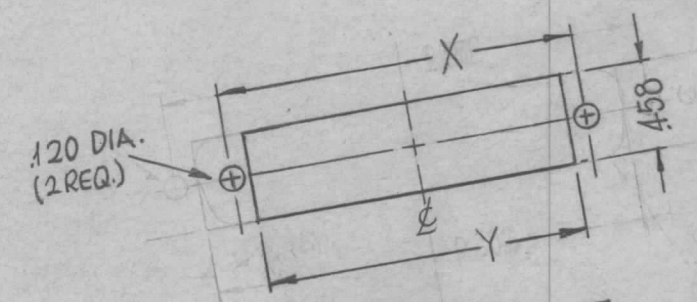
SYM	DESCRIPTION	DATE	CH. NO.	DRAFTS	CHECKER	ENG. APP.	REQ. ITEM	PART NO.	F. BUDETTI	DESCRIPTION	SYMBOL	
Ø	ORIGINAL RELEASE FOR PRODUCTION	6.27.66	#	WU			1/8 THICK			THE TECHNICAL MATERIEL CORP.		
X ₁	DET. A WAS 15/64 DIA HOLE, ON B'S C'SK AND	4.21.65	X ₁	KB			STOCK SIZE			MAMARONECK.		
X	EXP. RELEASE	12-2-64	X	SRG			ALUMINUM			NEW YORK		
							MATERIAL			PLATE, MOTOR MTG.		
	UNLESS OTHERWISE SPECIFIED DIMENSIONS ARE IN INCHES AND INCLUDE CHEMICALLY APPLIED OR PLATED FINISHES	SCALE	1:1				5052-H32		SRG	CKB	FINAL APPROVAL	
	DECIMALS .X ± .05 .XX ± .01 .XXX ± .005	TOLERANCES	FRACTIONS ± 1/64 ANGLES ± 0° 30'	CODE	A		TYPE & TEMPER	HEAT TREAT. SPEC.	RHS			MS4376 Ø
							5404 YELLOW IRIDITE					
							FINISH & SPEC. NO.					

REQ. PER UNIT	MODEL	ASSY.
1	RFTA-1	

HOLES	DESCRIPTION	REQ.
A	.161-.164 DIA.	4
B	SEE DETAIL	2



① MOUNT IN ALL "A" HOLES.



DETAIL	X	Y
B	1.852	1.654
C	2.500	2.302

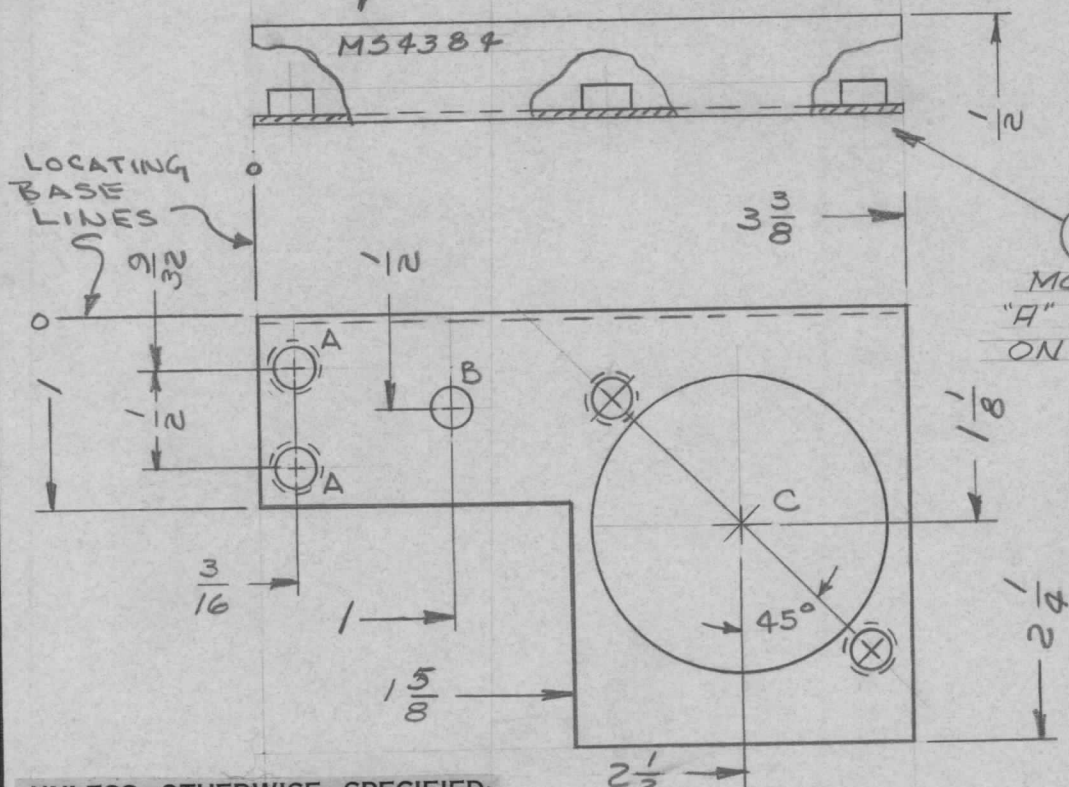
METAL STAMP TMC PART NO.
1/8 HIGH GOTHIC W/LATEST
REV. LETTER.

Ø	ORIGINAL RELEASE	7/15/69	Ø	CU					4	1	NT129-440-4	NUT, PLAIN, SPLINE	
X ₂	1 B CHANGED TO C	1-21-65	X ₂	SRG					REQ. ITEM	PART NO.	F. BUDETTI	DESCRIPTION	SY
X ₁	B DETAIL WAS 37 PIN CONN.	1-14-65	X ₁	SRG					.064 THICK		THE TECHNICAL MATERIEL CORP.		
X	EXP. RELEASE	12-11-64	X	SRG					STOCK SIZE		MAMARONECK, NEW YORK		
SYM	DESCRIPTION	SCALE	DATE	CH. NO.	DRAFTS	CHECKER	ENG. APP.		ALUMINUM		PLATE, JACK MOUNTING		
	UNLESS OTHERWISE SPECIFIED DIMENSIONS ARE IN INCHES AND INCLUDE CHEMICALLY APPLIED OR PLATED FINISHES	1:1							5052-H32		SRG	CHECKED	FINAL APPROV
	FRACTIONS ± 1/64 ANGLES 30°								S404 YELLOW IRIDITE		AVC	AA	MS437
									FINISH & SPEC. NO.		ELEC. DES. APP.	MECH. DES. APP.	REPROVAL NO. 44

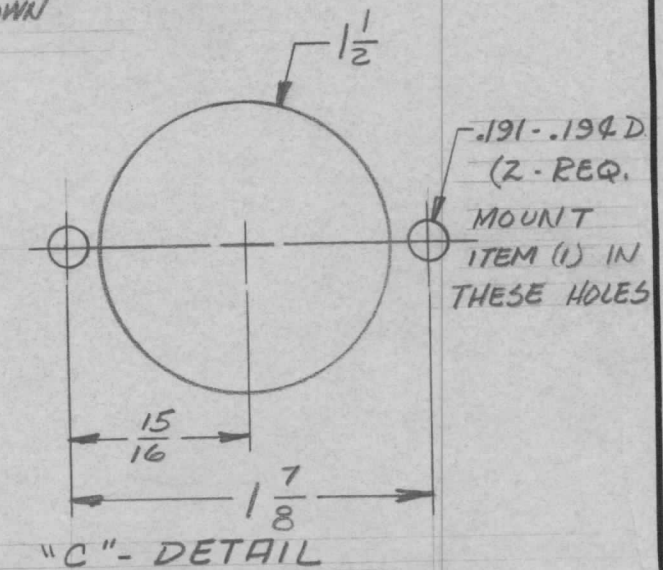
METAL STAMP TMC P/N
W/LATEST REVISION LETTER

REQ. PER UNIT	USED ON			MS4384 \emptyset
	MODEL	ASS'Y. NO.	DATE	
4	RTMU-1		2-16-64	

HOLE	DESCRIPTION	REQ.
A	.191 - .194 DIA.	2
B	11/64 DIA.	1
C	SEE DETAIL	1



1
MOUNT AS SHOWN IN
"A" & "C" DETAIL AS SHOWN
ON REAR.

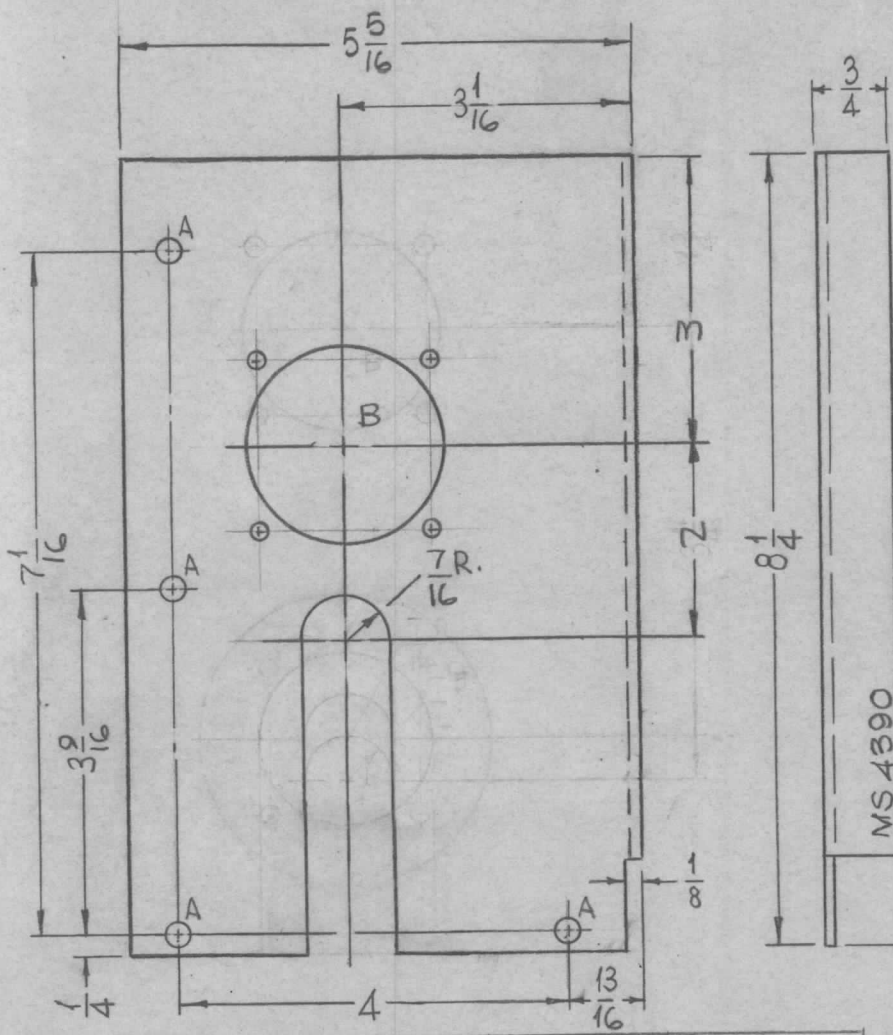


UNLESS OTHERWISE SPECIFIED:

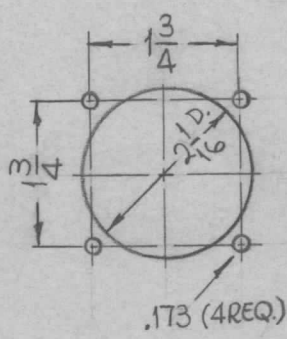
1. USE MATERIAL THICKNESS FOR MAXIMUM RADIUS ON ALL BENDS
2. ALL ANGULAR BENDS 90 DEGREES
3. REMOVE ALL BURRS AND SHARP EDGES
4. MOUNT INSERTS AFTER FINISHING

4	1	NT129-632-4	NUT, PLAIN, SPLINE		A
REQ. ITEM	PART NO.		DESCRIPTION		SYMBOL
	.062 THK STOCK SIZE		THE TECHNICAL MATERIEL CORP. MAMARONECK. NEW YORK		
	ALUMINUM		BRACKET, MTG, CAPACITOR		
SYM		DESCRIPTION	DATE	CH. NO.	DRAFTS
		UNLESS OTHERWISE SPECIFIED DIMENSIONS ARE IN INCHES AND INCLUDE CHEMICALLY APPLIED OR PLATED FINISHES	SCALE	1:1	
DECIMALS		FRACTIONS	CODE		
.X ± .05		± 1/64	A		
.XX ± .01		ANGLES			
.XXX ± .005		± 0° 30'			
TOLERANCES					
5052-H32		HEAT TREAT. SPEC.	DRAWN	CHECKED	FINAL APPROVAL
3A04 YEL IRIDITE			De 8/16/65	W. J. JOHNSON	MS4384 \emptyset
FINISH & SPEC. NO.		ELEC. DES. APP.	MECH. DES. APP.		

REQ. PER UNIT	USED ON		MS 4390	Q
	MODEL	ASS'Y. NO.		
1	AP12C		2-16-65	



HOLES	DESCRIPTION	REQ.
A	7/32 DIA.	4
B	SEE DETAIL	1



B-DETAIL

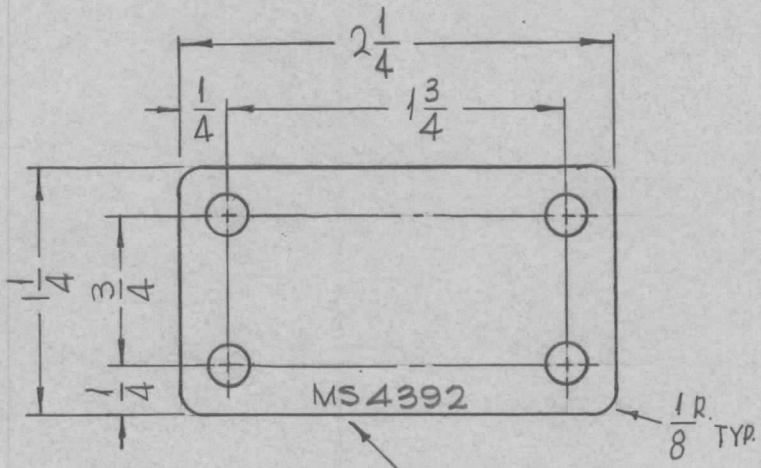
METAL STAMP TMC PART NO. 1/8 HIGH GOTHIC W/LATEST REV. LETTER.

- UNLESS OTHERWISE SPECIFIED:
1. USE MATERIAL THICKNESS FOR MAXIMUM RADIUS ON ALL BENDS
 2. ALL ANGULAR BENDS 90 DEGREES
 3. REMOVE ALL BURRS AND SHARP EDGES

Q	ORIGINAL RELEASE FOR PRODUCTION	8-25-66	Q	RME		REF: LD 1850						
X3	3 WAS 1-3/4, 2 WAS 3-1/16	7-29-65	X3	SRG	7/8		REQ. ITEM	PART NO.	F. BUDETTI	DESCRIPTION	SYMBOL	
X2	1 PLUG DETAIL DELETED 3 1/16 WAS 3/4, SLOT ADDED	4-21-65	X2	SRG	7/8		1/8 THICK STOCK SIZE		THE TECHNICAL MATERIEL CORP. MAMARONECK, NEW YORK			
X1	MODEL WAS RFTA-1	3-25-65	X1	SRG	7/8		ALUMINUM		BRACKET, MTG CONNECTORS			
X	EXP. RELEASE	2-16-65	X	SRG	7/8		MATERIAL					
SYM	DESCRIPTION	DATE	CH. NO.	DRAFTS	CHECKER	ENG. APP.	5052-H32		SRG			
UNLESS OTHERWISE SPECIFIED DIMENSIONS ARE IN INCHES AND INCLUDE CHEMICALLY APPLIED, OR PLATED FINISHES		SCALE	1/2:1				TYPE & TEMPER		HEAT TREAT. SPEC.	DRAWN	CHECKED	FINAL APPROVAL
DECIMALS .X ± .05 .XX ± .01 .XXX ± .005	TOLERANCES	FRACTIONS ± 1/64 ANGLES ± 0° 30'	CODE	A				S404 YELLOW IRIDITE		ELEC. DES. APP.		MECH. DES. APP.
							FINISH & SPEC. NO.		MS 4390		Q	

REQ. PER UNIT	USED ON		
	MODEL	ASS'Y. NO.	DATE
1	RFTA-1	A5348	2-18-65

MS 4392 \emptyset



HOLES:
13/64 DIA. (4REQ.)

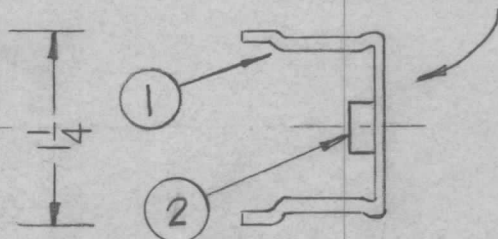
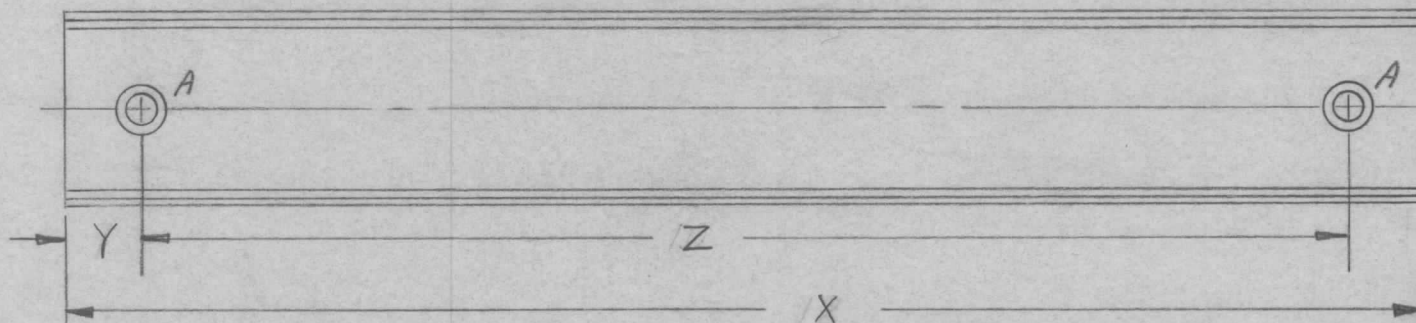
MARK TMC PART NUMBER 1/8 HIGH GOTHIC W/LATEST REV. LETTER.

SYM	DESCRIPTION	DATE	CH. NO.	DRAFTS	CHECKER	ENG. APP.	REQ. ITEM	PART NO.	F. BUDETTI	DESCRIPTION	SYMBOL	
\emptyset	ORIGINAL RELEASE FOR PRODUCTION	5/20/66					.032 THICK			THE TECHNICAL MATERIEL CORP. MAMARONECK, NEW YORK PLATE, GROUND	\emptyset	
X ₁	MODIFIED FROM .081 THK	4-9-65	X ₁	B	CA		STOCK SIZE					
X	EXP. RELEASE	2-18-65	X	SRG			COPPER					
							MATERIAL					
UNLESS OTHERWISE SPECIFIED DIMENSIONS ARE IN INCHES AND INCLUDE CHEMICALLY APPLIED OR PLATED FINISHES		SCALE	1:1				HOT ROLLED		SRG	OCB	MS	Amley
DECIMALS .X \pm .05 .XX \pm .01 .XXX \pm .005		TOLERANCES		FRACTIONS \pm 1/64 ANGLES \pm 0° 30'		CODE A	TYPE & TEMPER	HEAT TREAT. SPEC.	DRAWN	CHECKED	FINAL APPROVAL	
							S245 SILVER PLATE S423 SILVER KOTE		aa 5/19/66		MS 4392 \emptyset	
							FINISH & SPEC. NO.		ELEC. DES. APP.	MECH. DES. APP.		

TMC P/N	X	Y	Z	REQ. PER UNIT	USED ON		
					MODEL	ASS'Y. NO.	DATE
MS4393-	12	1	10	1	AX563	AX56A	3-8-65
MS4393-2	16-7/8	1-3/16	14-1/2	1		AX660	2-8-67

MS4393 \emptyset

METAL STAMP TMC P/N
 $\frac{1}{8}$ GOTHIC ON REAR.
 W/LATEST REVISION LETTER.



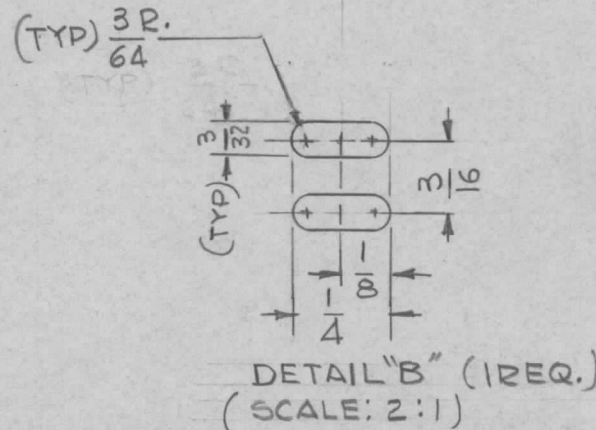
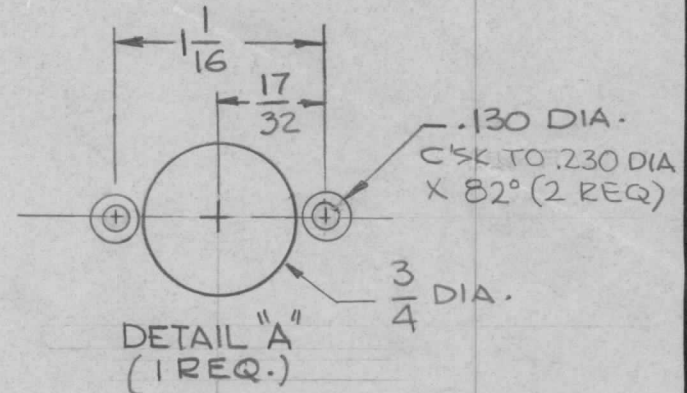
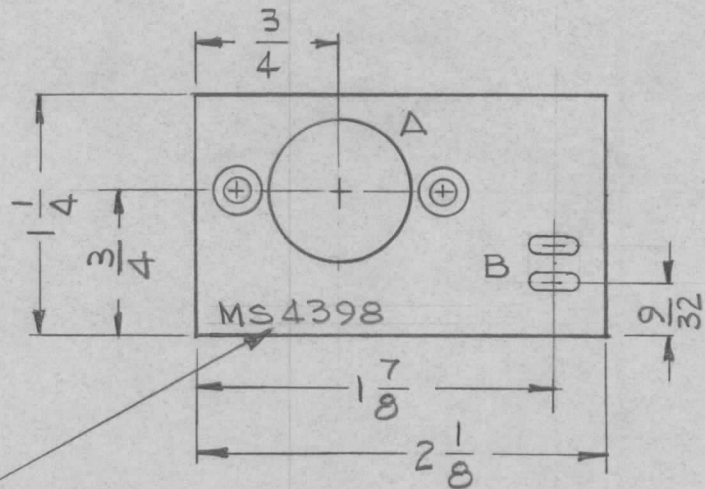
MOUNT IN ALL
A HOLES.

A .191-.194 DIA. 2 REQ.

REQ.	ITEM	PART NO.	F. BUDETTI DESCRIPTION	SYMBOL
2	2	NT129-632-3	NUT, PLAIN, SPLINE	A
1	1	PO160	CND, RACEWAY, MTL	
THE TECHNICAL MATERIEL CORP. MAMARONECK, NEW YORK				
CHANNEL, AC STRIP				
MATERIAL				
SCALE DO NOT SCALE				
UNLESS OTHERWISE SPECIFIED DIMENSIONS ARE IN INCHES AND INCLUDE CHEMICALLY APPLIED OR PLATED FINISHES		TYPE & TEMPER HEAT TREAT. SPEC.		
DECIMALS .X \pm .05 .XX \pm .01 .XXX \pm .005		DRAWN CHECKED		FINAL APPROVAL
FRACTIONS \pm 1/64 ANGLES \pm 0° 30'		FINISH & SPEC. NO.		ELEC. DES. APP. MECH. DES. APP.
TOLERANCES		MS4393		\emptyset

REQ. PER UNIT	USED ON		MS 4398 A
	MODEL	DATE	
	TTR-10	9-14-65	

HOLE	DESCRIPTION	REQ
A	SEE DETAIL	1
B	SEE DETAIL	1



MARK TMC PART NO. WITH LATEST REV. LETTERS, 1/8 HIGH BLACK GOTHIC AS PER TMC S-727.

REQ. ITEM	PART NO.	DESCRIPTION	SYMBOL
	.062 THK	THE TECHNICAL MATERIEL CORP.	
	STOCK SIZE	MAMARONECK, NEW YORK	
	ALUMINUM	PLATE, SWITCH	
	MATERIAL		
	5052-H32	G.D.L.	
	TYPE & TEMPER	HEAT TREAT. SPEC.	
	S404 YEL. IRIDITE	DRAWN	
	FINISH & SPEC. NO.	ELEC. DES. APP.	
		MECH. DES. APP.	
		MS4398	A

SYM	DESCRIPTION	DATE	CH. NO.	DRAFTS	CHECKER	ENG. APP.
A	"A" DET C'SK WAS .130 DIA	9.30.66	16944	WHD	GDL	
Ø	ORIGINAL RELEASE	9/14/65	Ø			

UNLESS OTHERWISE SPECIFIED DIMENSIONS ARE IN INCHES AND INCLUDE CHEMICALLY APPLIED OR PLATED FINISHES		SCALE	
		1:1	
DECIMALS	FRACTIONS	CODE	
.X ± .05	± 1/64	A	
.XX ± .01	ANGLES		
.XXX ± .005	± 0° 30'		