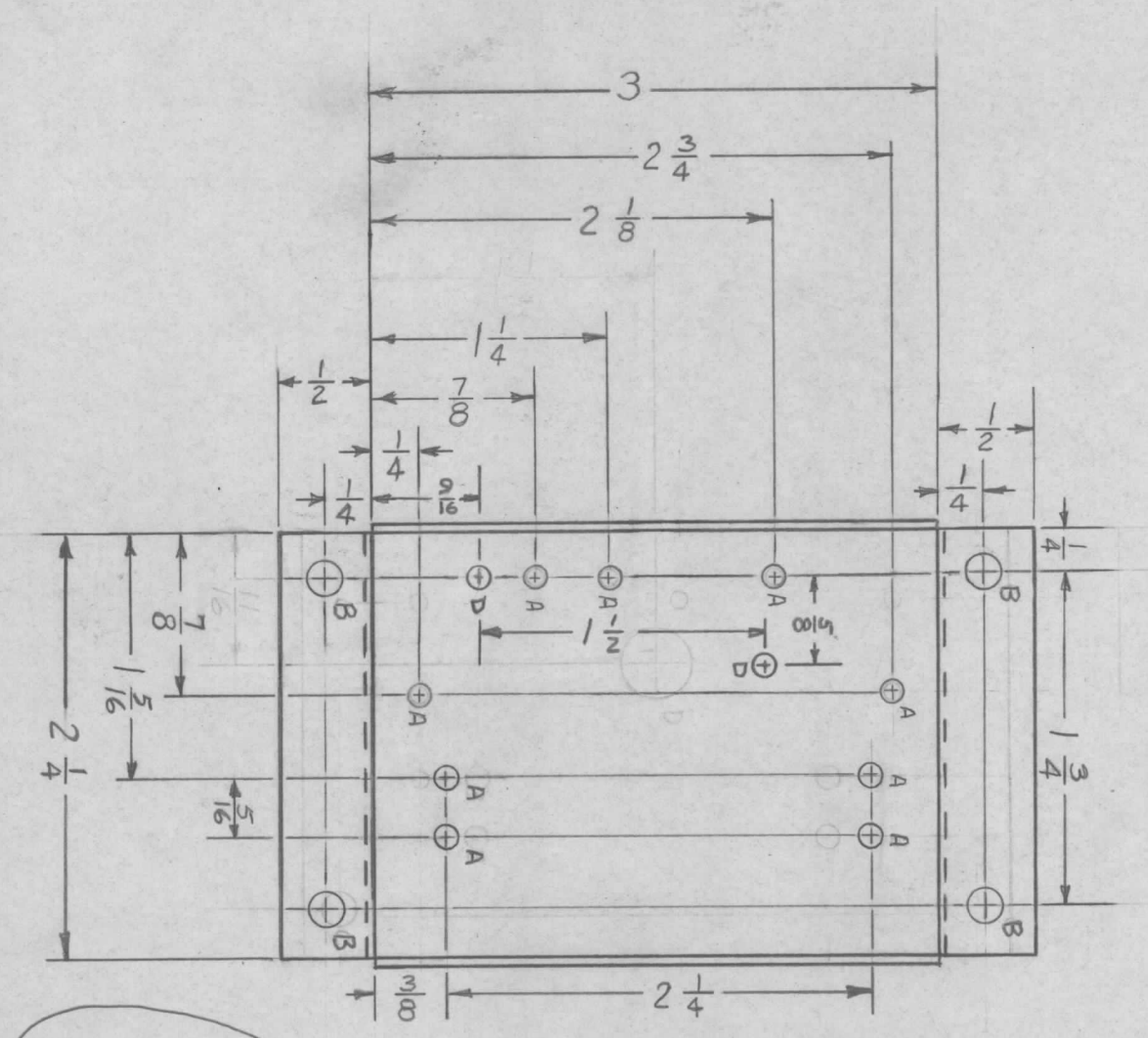
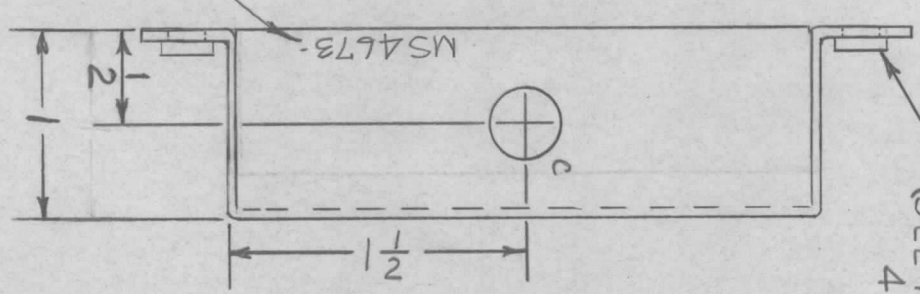


SYM	DESCRIPTION	DATE	E.M.N. NO.	DRAFT	CHKD	APPD
X1	UNLESS OTHERWISE SPECIFIED NOTES 1-2 ADDED	7-2-65		JC		
X2	"C" HOLE WAS .975 DIA	7-6-65		JC		
X3	"D" HOLES ADDED (SEE PRODUCTION ORIGINAL RELEASE FOR PRODUCTION)	7-22-65		MS		
Ø		9/12/65		H.V.		

M54673 Ø



(SEE NOTE)  
①  
4



METAL STAMP TMC  
PT. NO. 1/8 HIGH  
GOTHIC, W/LATEST  
REVISION LETTER

HOLE	DIA.	REQ'D
A	.1/8	9
B	.191-.194	4
C	.1/2	1
D	11/64	2

- UNLESS OTHERWISE SPECIFIED:
1. USE MATERIAL THICKNESS FOR MAXIMUM RADIUS ON ALL BENDS
  2. ALL ANGULAR BENDS 90 DEGREES
  3. REMOVE ALL BURRS AND SHARP EDGES
  4. MOUNT INSERTS AFTER FINISHING

QTY./UNIT	DDRR-506	MODEL USED ON	ASSY. NO.
SCALE	1:1		

THE CONTENTS OF THIS DRAWING ARE THE EXCLUSIVE PROPERTY OF THE TECHNICAL MATERIEL CORP. ITS UNAUTHORIZED USE OR REPRODUCTION IN WHOLE OR IN PART IS STRICTLY FORBIDDEN.

REQ'D	ITEM	PART NUMBER	DESCRIPTION	SYMBOL
4	1	NT129-632-4	NUT, SWAGE TYPE	

MATERIAL  
.064 ALUM. 5052-H32

FINISH  
S404 YEL. IRIDITE

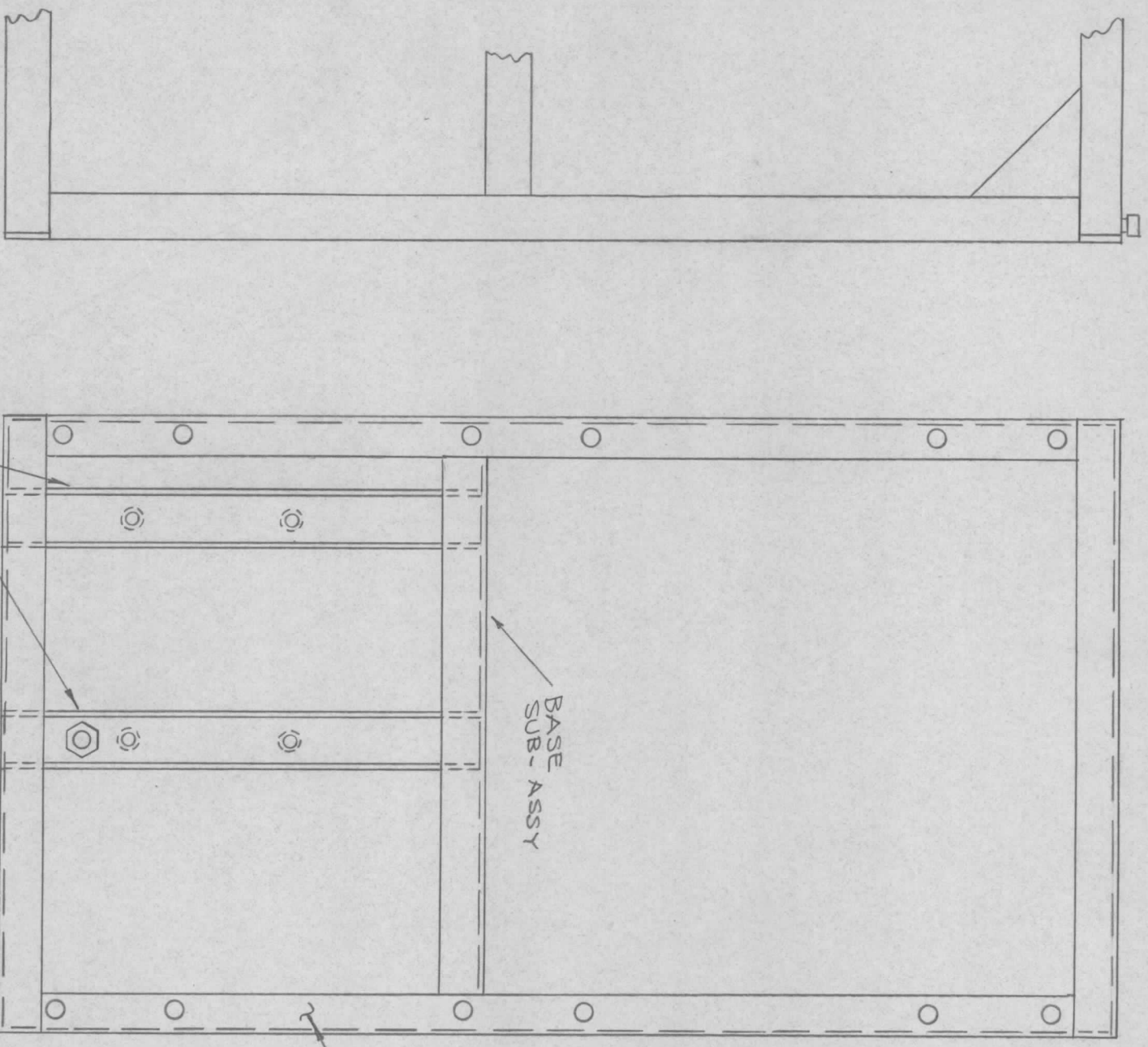
TITLE  
THE TECHNICAL MATERIEL CORP.  
MAMARONECK, NEW YORK

CHASSIS, COMPONENT MTG.

DATE	DATE	DATE	DATE
7-2-65	8-5-65	8-8-65	

REVISIONS				
SYM	DESCRIPTION	DATE	E.M.N. NO.	DRAFT
Ø	ORIGINAL RELEASE FOR PRODUCTION	3-15-66	Ø	C.D.L.

MS 4674 Ø



BOTTOM VIEW OF  
FRAME ASSY MS 1455  
①

DELETE 2 CHANNELS  
ON BASE SUB-ASSY

QTY./UNIT	1	MODEL USED ON	GPT-40KEC	ASSY. NO.	
SCALE		CODE	C		

THE CONTENTS OF THIS DRAWING ARE THE EXCLUSIVE PROPERTY OF THE TECHNICAL MATERIEL CORP. ITS UNAUTHORIZED USE OR REPRODUCTION IN WHOLE OR IN PART IS STRICTLY FORBIDDEN.

REQD. ITEM	PART NUMBER	DESCRIPTION	SYMBOL
1	MS1455	FRAME ASSY	

LIST OF MATERIAL			
MATERIAL	FINISH	TITLE	SYMBOL
SEE ITEM 1	SEE ITEM 1	THE TECHNICAL MATERIEL CORP. MAMARONECK, NEW YORK	
	SEE ITEM 1	FRAME, AUX.	

UNLESS OTHERWISE SPECIFIED DIMENSIONS ARE IN INCHES AND INCLUDE CHEMICALLY APPLIED OR PLATED FINISHES			
DECIMALS	TOLERANCES	FRACTIONS	ANGLES
X ± .05		± 1/64	
.XX ± .01		± 0° 30'	
.XXX ± .005			

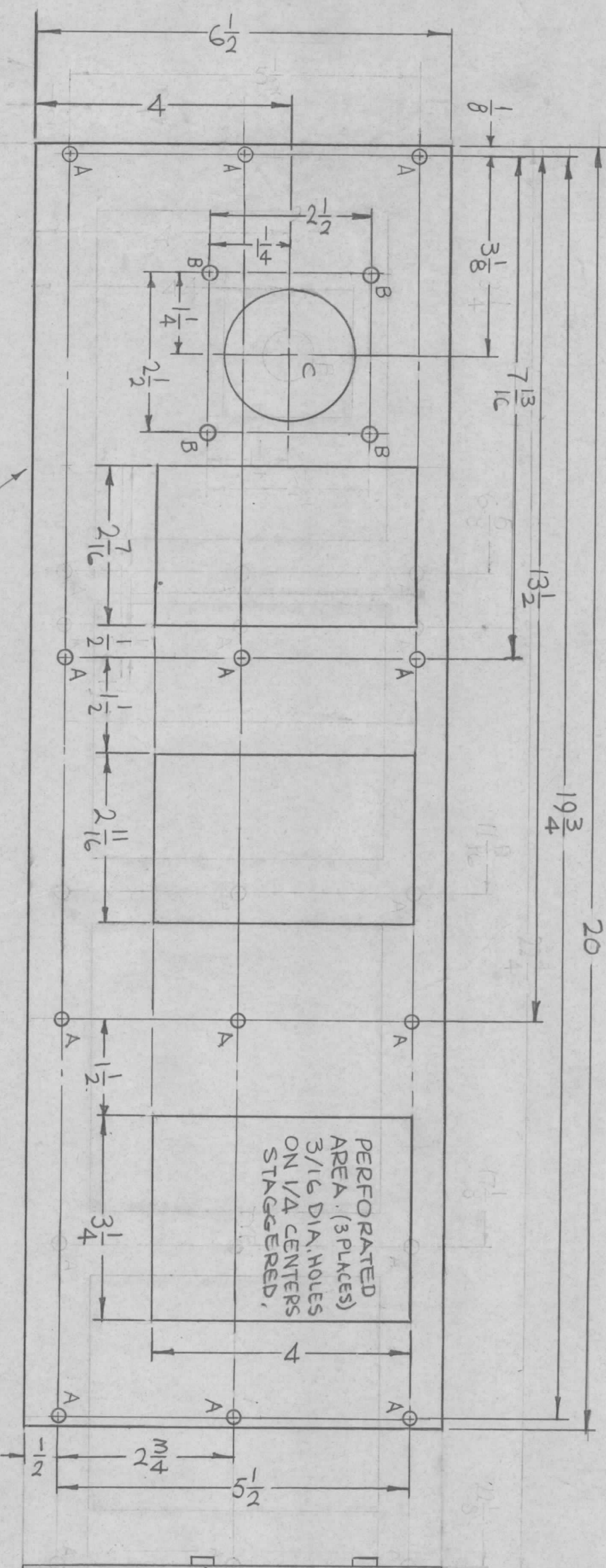
DRAWN	CHECKED	ELECT. DES.	MECH. DES.	DATE	FINAL APPROVAL	DATE
<i>[Signature]</i>	<i>[Signature]</i>			2-23-66	<i>[Signature]</i>	
				3-9-66		

MS 4674	Ø	REV. LTR.	
---------	---	-----------	--

NOTES

HOLES	DESCRIPTION	REQ.
A	11/64 DIA.	14
B	.221-.224 DIA.	4
C	2" DIA.	1

SYMBOL		REVISIONS	
SYM	DESCRIPTION	DATE	BY
X1	11-11/16 WAS 11-5/8	7-27-65	X1
X2	RE-DESIGNED	8-9-65	X2
Ø	ORIGINAL RELEASE FOR PRODUCTION	3-3-66	44



MARK TMC PART NO.  
(MS 4689) 1/8 HIGH GOTHIC  
W/LATEST REV. LETTER,  
ON REAR.

QTY./UNIT	1	TST-10K	MODEL USED ON	ASSY. NO.
SCALE	1/2:1	A		

THE CONTENTS OF THIS DRAWING ARE THE EXCLUSIVE PROPERTY OF THE TECHNICAL MATERIEL CORP. ITS UNAUTHORIZED USE OR REPRODUCTION IN WHOLE OR IN PART IS STRICTLY FORBIDDEN.

REQ'D.	ITEM	PART NUMBER	DESCRIPTION	SYMBOL
4	1	NT129-832-4	NUT, PLAIN, SPLINE	B

LIST OF MATERIAL	
MATERIAL	OG4 THICK ALUMINUM 5052-H32
FINISH	S404 YEL. IRIDITE
TITLE	PLATE, TOP, LOW PASS FILTER
THE TECHNICAL MATERIEL CORP. MAMARONECK, NEW YORK	

DRAWN	DATE	FINAL APPROVAL	DATE
CHECKED	DATE		
ELECT. DES.	DATE		
MECH. DES.	DATE		

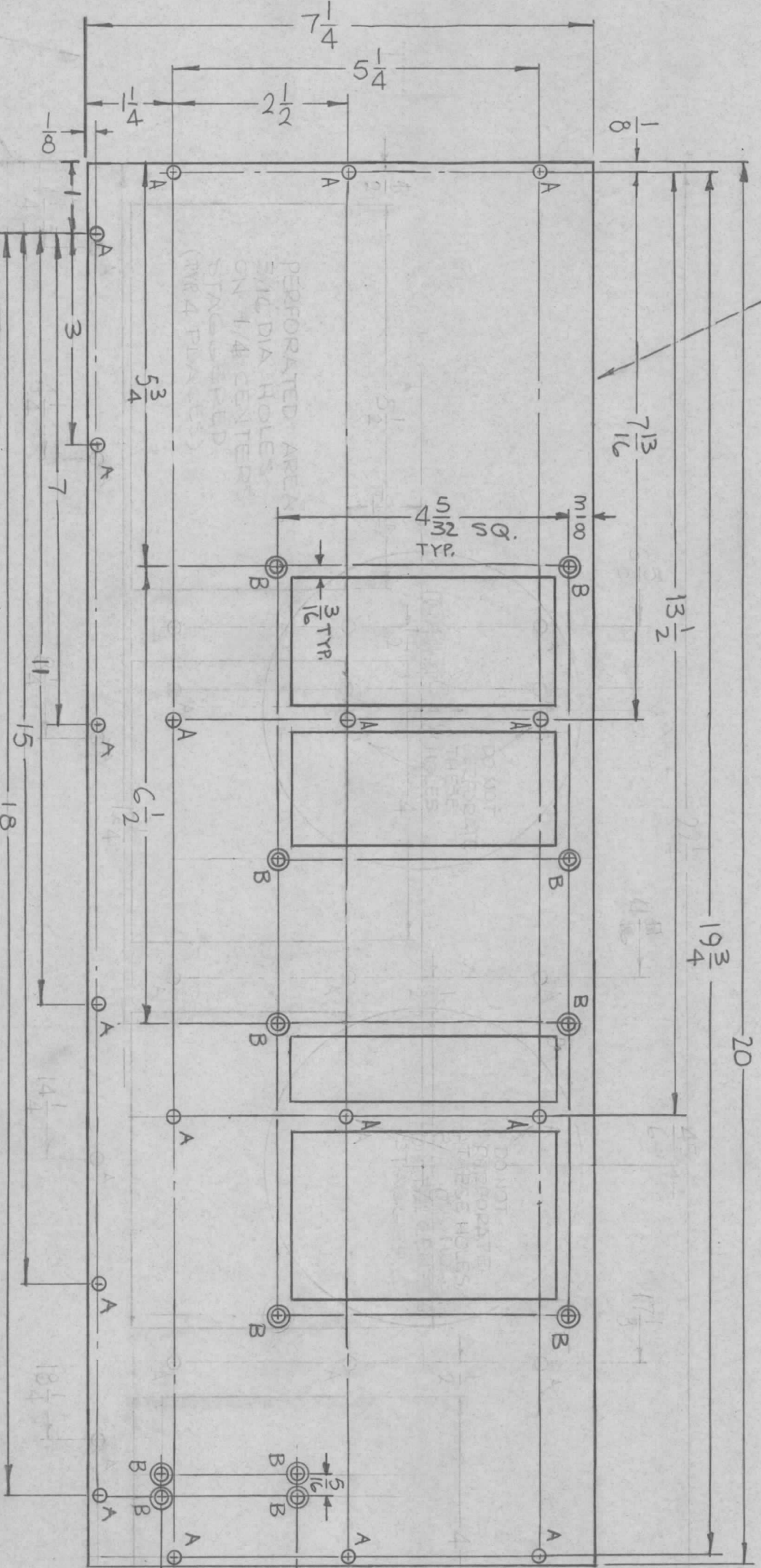
NOTES

MARK TMC PART NO. (MS4690-)  
 1/8 HIGH GOTHIC W/LATEST  
 REV. LETTER. (ON REAR)

HOLES	DESCRIPTION	REQ.
A	11/64 DIA.	18
B	DR. 144 DIA. C'SINK 82° TO .284 DIA.	12

MS4690

REVISIONS		DATE	E.M.N. NO.	DRAFT	CHKD	APPD
X1	11-11/16 WAS 11-5/8	7-21-65	X1	APB		
X2	RE-DESIGNED	8-9-65	X2	APB		
X3	PERFORATED AREA DELETED, CUTOUTS ADDED	8-24-65	X3	APB		
Ø	ORIGINAL RELEASE FOR PRODUCTION	3-3-66	M-1	Jc	QPS	one



REQ'D.	ITEM	PART NUMBER	DESCRIPTION	SYMBOL
	F. BUDETTI			

MATERIAL	FINISH	TITLE
.064 THICK ALUMINUM S052-H32	S404 YEL. IRIDITE	PLATE, RIGHT SIDE, LOW PASS FILTER

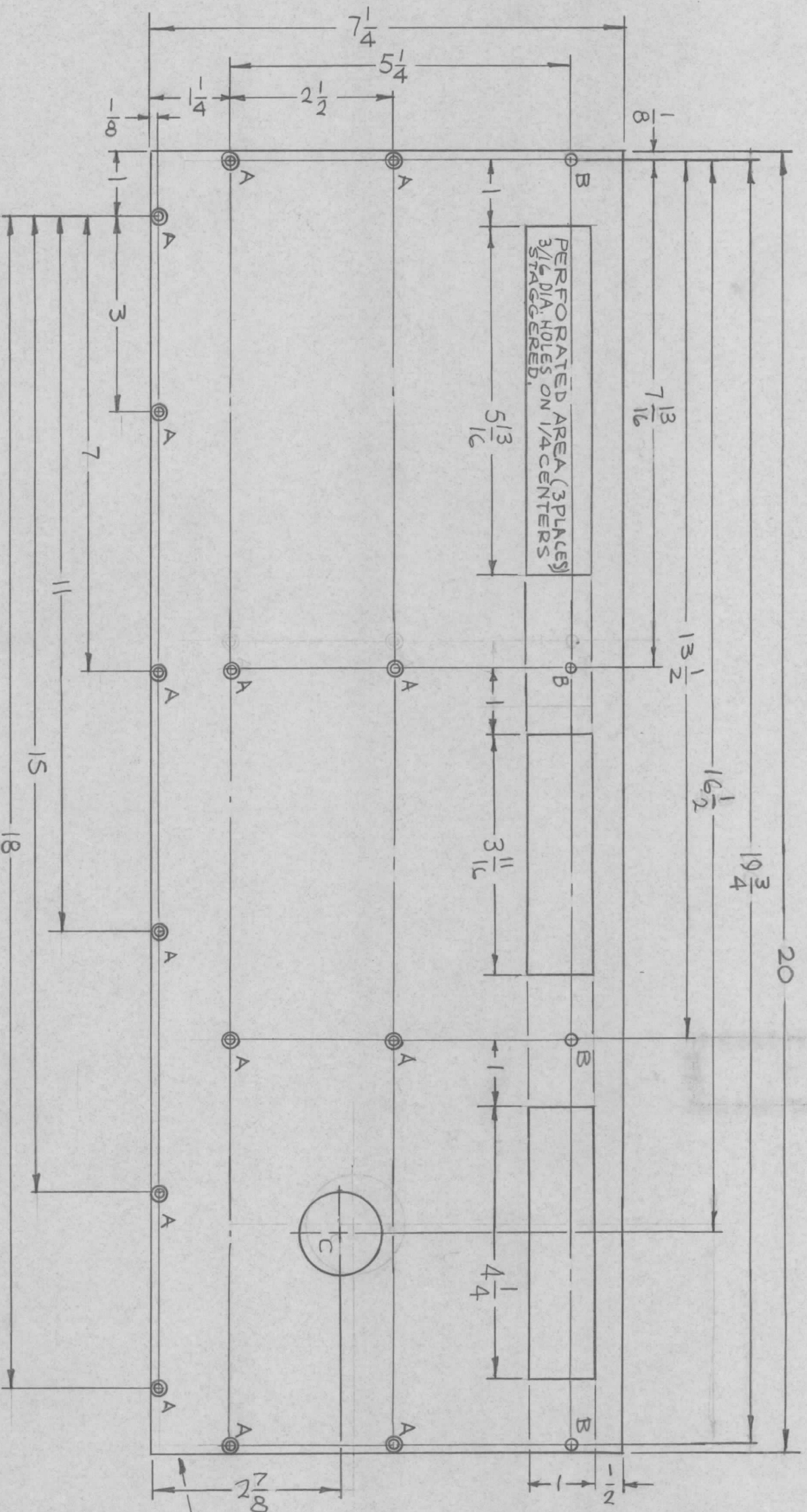
LIST OF MATERIAL		THE TECHNICAL MATERIEL CORP.	
REVISIONS	DATE	DESCRIPTION	SYMBOL
		MAMARONECK, NEW YORK	

Q'TY./UNIT	MODEL USED ON	ASSY. NO.
1	TST-10K	

LOCATING  
 BASE-LINE  
 MORE  
 WHEN PERFORATING, DO NOT  
 PERFORATE A HOLE.

NOTES

REVISIONS						
SYM	DESCRIPTION	DATE	E.M.N. NO.	DRAFT	CHKD	APPD
X1	11-11/16 WAS 11-9/8	7-27-65	X1	<i>MLL</i>		
X2	RE-DESIGNED	8-9-65	X2	<i>MLL</i>		
Ø	ORIGINAL RELEASE FOR PRODUCTION	3-3-66	M	<i>Jc</i>	<i>qfb</i>	<i>acc</i>



HOLES	DESCRIPTION	REQD
A	DR. 144 DIA. C'SINK 82° TO .284 DIA	14
B	11/64 DIA	4
C	1-1/4 DIA.	1

MARK TMC PART NO., 11-11/16 HIGH GOTHIC W/LATEST REV. LETTER (ON REAR)

REQ'D.	ITEM	PART NUMBER	DESCRIPTION	SYMBOL
	F. BUDETTI		LIST OF MATERIAL	

MATERIAL		TITLE	
064 THICK ALUMINUM	5052-H32	PLATE, LEFT SIDE, LOW PASS FILTER	
FINISH		S404 YEL. IRIDITE	

UNLESS OTHERWISE SPECIFIED DIMENSIONS ARE IN INCHES AND INCLUDE CHEMICALLY APPLIED OR PLATED FINISHES			
DECIMALS	TOLERANCES	FRACTIONS	ANGLES
.X ± .05	± 1/64	± 1/64	± 0° 30'
.XX ± .01			
.XXX ± .005			

QTY./UNIT	MODEL USED ON	ASSY. NO.
1	TST-10K	
SCALE	CODE	
1/2:1	A	

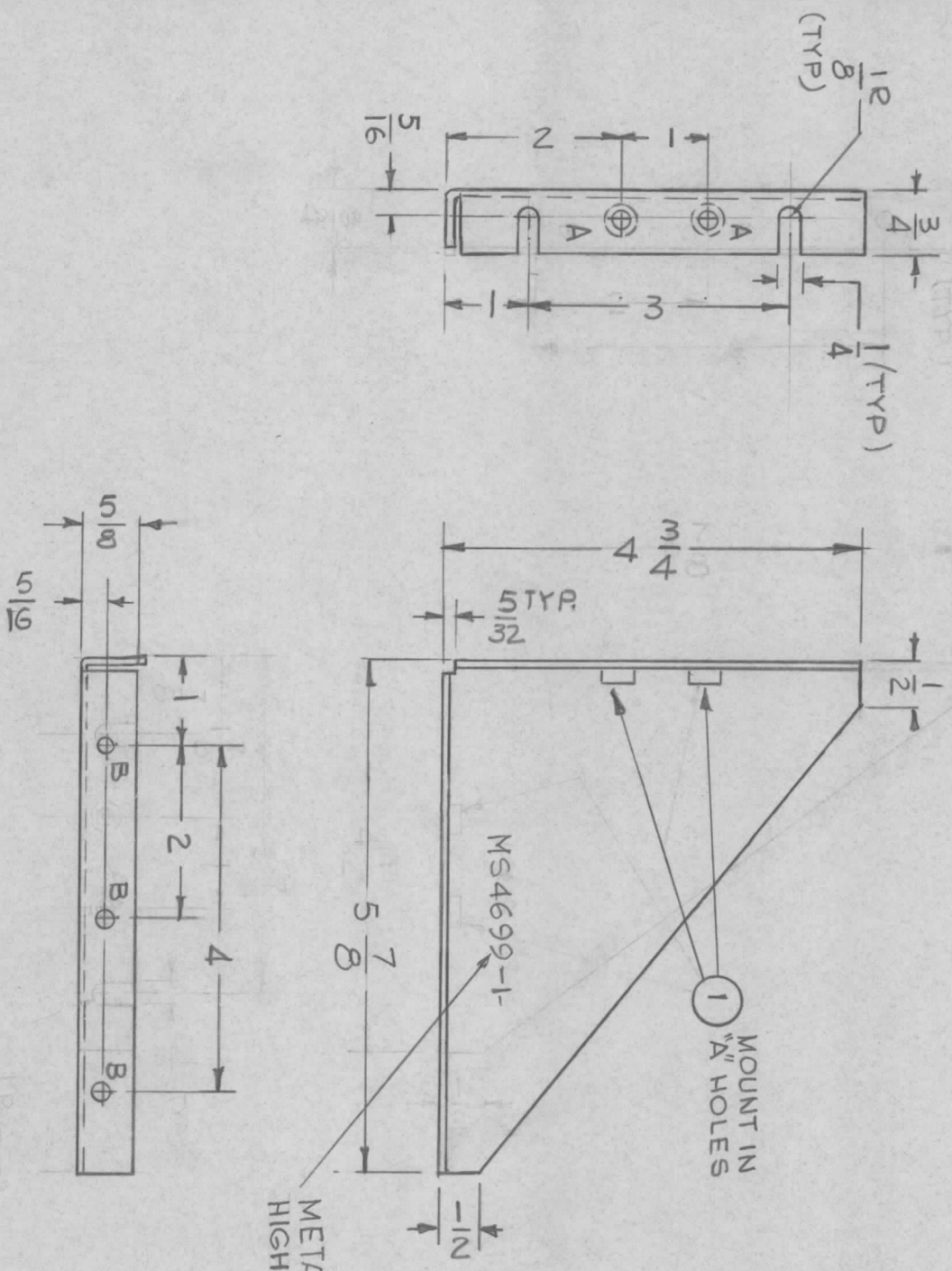
NOTES

THE CONTENTS OF THIS DRAWING ARE THE EXCLUSIVE PROPERTY OF THE TECHNICAL MATERIEL CORP. ITS UNAUTHORIZED USE OR REPRODUCTION IN WHOLE OR IN PART IS STRICTLY FORBIDDEN.

DRAWN		DATE	FINAL APPROVAL	DATE
<i>MLL</i>	<i>MLL</i>	8-9-65	<i>MLL</i>	3/2/66
CHECKED		DATE		
<i>qfb</i>	<i>qfb</i>	3-2-66		
ELECT. DES.		DATE		
<i>MLL</i>	<i>MLL</i>			
MECH. DES.		DATE		
<i>MLL</i>	<i>MLL</i>			

MS 4691	Ø
---------	---

HOLE	DESCRIPTION	REQ
A	.191 - .194 DIA	2
B	3/16 DIA	3



METAL STAMP TMC PART NO. 1/8  
HIGH GOTHIC W/LATEST REV. LETTER

MS 4699-1 RIGHT SIDE PLATE (AS SHOWN)  
MS 4699-2 LEFT SIDE PLATE (OPP. HAND)

REVISIONS		DATE	E.M.N. NO.	DRAFT	CHKD	APPD
X1	REDRAWN & REVISED	9-22-65	X1	G.D.L.		
Ø	ORIGINAL RELEASE FOR PRODUCTION	9/25/69		(C)		

REC'D.	ITEM	PART NUMBER	DESCRIPTION	SYMBOL
2	1	NT 129-632-4	NUT, PLAIN, SPLINE	A

MATERIAL	TITLE
.081 THK ALUMINUM 5052-H32	THE TECHNICAL MATERIEL CORP. MAMARONECK, NEW YORK

FINISH	DRAWN	CHECKED	ELECT. DES.	MECH. DES.	DATE	DATE	DATE	DATE
5404 YEL. IRIDITE	G.D.L.				9-22-65			

QTY./UNIT	MODEL USED ON	ASSY. NO.	SCALE	CODE	DECIMALS	TOLERANCES	FRACTIONS	DATE	DATE	DATE	DATE
1	TPSG-1		1:2	A	.X ± .05 .XX ± .01 .XXX ± .005	± 1/64 ANGLES ± 0° 30'					

- UNLESS OTHERWISE SPECIFIED:
1. USE MATERIAL THICKNESS FOR MAXIMUM RADIUS ON ALL BENDS
  2. ALL ANGULAR BENDS 90 DEGREES
  3. REMOVE ALL BURRS AND SHARP EDGES
  4. MOUNT INSERTS AFTER FINISHING

NOTES

THE CONTENTS OF THIS DRAWING ARE THE EXCLUSIVE PROPERTY OF THE TECHNICAL MATERIEL CORP. ITS UNAUTHORIZED USE OR REPRODUCTION IN WHOLE OR IN PART IS STRICTLY FORBIDDEN.