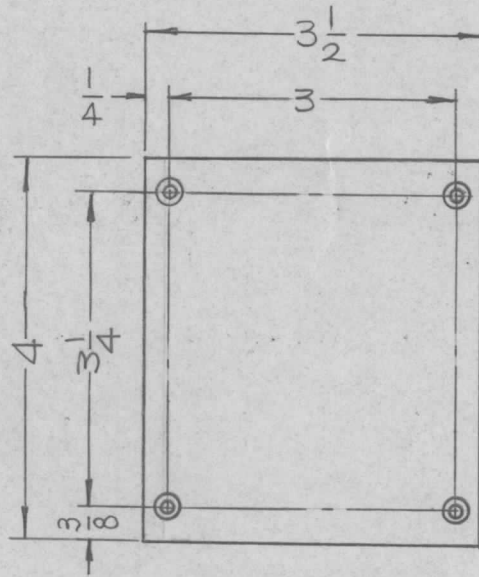


REQ. PER UNIT	USED ON			MS 4600 \emptyset
	MODEL	ASS'Y. NO.	DATE	
1	RFTA-1	A5348	5-25-65	



HOLES:
 DRILL .120 DIA. C'SINK 82°
 TO .230 DIA. (4REQ)

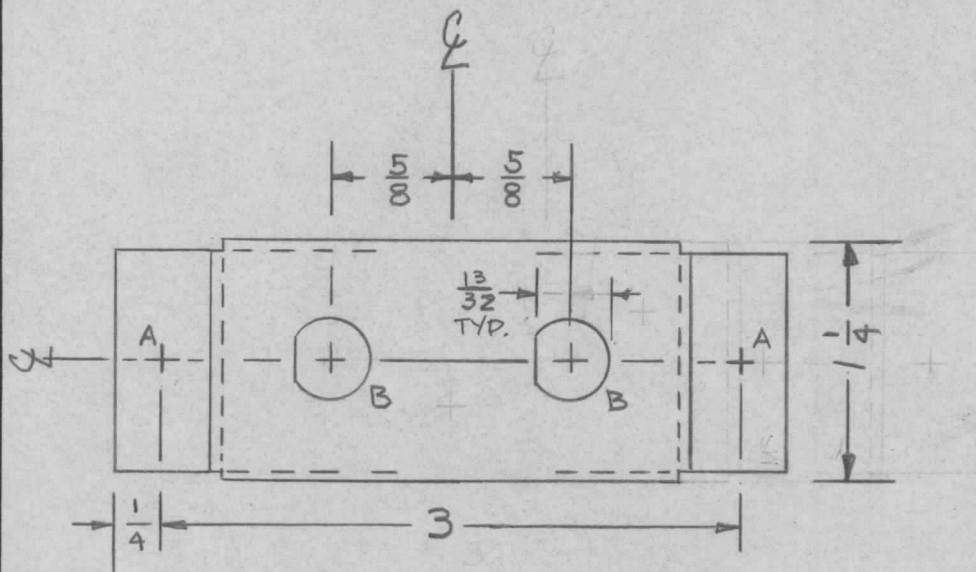
MARK STAMP
 TMC PART NO.
 (MS 4600 -)
 1/8 HIGH GOTHIC
 W/LATEST REV.
 LETTER (ON REAR)

FRONT VIEW

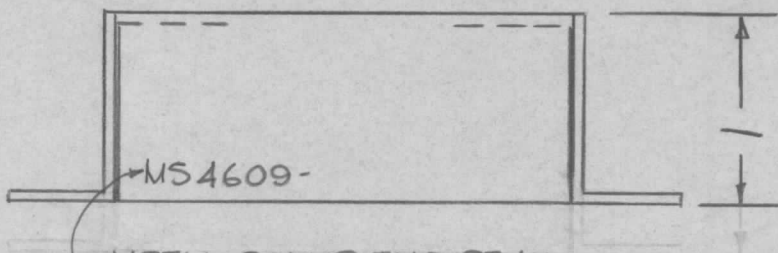
REQ.	ITEM	PART NO.		F. BUDETTI DESCRIPTION			SYMBOL
		.054 THICK		THE TECHNICAL MATERIEL CORP.			
		STOCK SIZE		MAMARONECK. NEW YORK			
\emptyset	ORIGINAL RELEASE	4-12-66	\emptyset G.D.L.	ALUMINUM			PLATE, BOTTOM COVER
SYM	DESCRIPTION	DATE	CH. NO.	DRAFTS	CHECKER	ENG. APP.	
UNLESS OTHERWISE SPECIFIED DIMENSIONS ARE IN INCHES AND INCLUDE CHEMICALLY APPLIED OR PLATED FINISHES		SCALE					
		1/2:1					
DECIMALS	TOLERANCES	FRACTIONS	CODE	5052-H32			
.X \pm .05		\pm 1/64	A	TYPE & TEMPER	HEAT TREAT. SPEC.	DRAWN	CHECKED
.XX \pm .01		ANGLES		S404 YEL. IRIDITE		9-7-66	
.XXX \pm .005		\pm 0° 30'		FINISH & SPEC. NO.		ELEC. DES. APP.	MECH. DES. APP.
							MS 4600 \emptyset

REQ. PER UNIT	USED ON		
	MODEL	ASS'Y. NO.	DATE
2	DDRR-5M		5-22-65
2	DDR-5M		5-22-65
2	DDR-5L		5-22-65
1	DDR-5K		5-22-65

MS4609 Ø



A - 3/16 DIA. (2 REQ.)
 B - 7/16 DIA "D" HOLE (2 REQ.)



METAL STAMP TMC PT. NO.
 1/8 HIGH GOTHIC, W/LATEST
 REVISION LETTER.

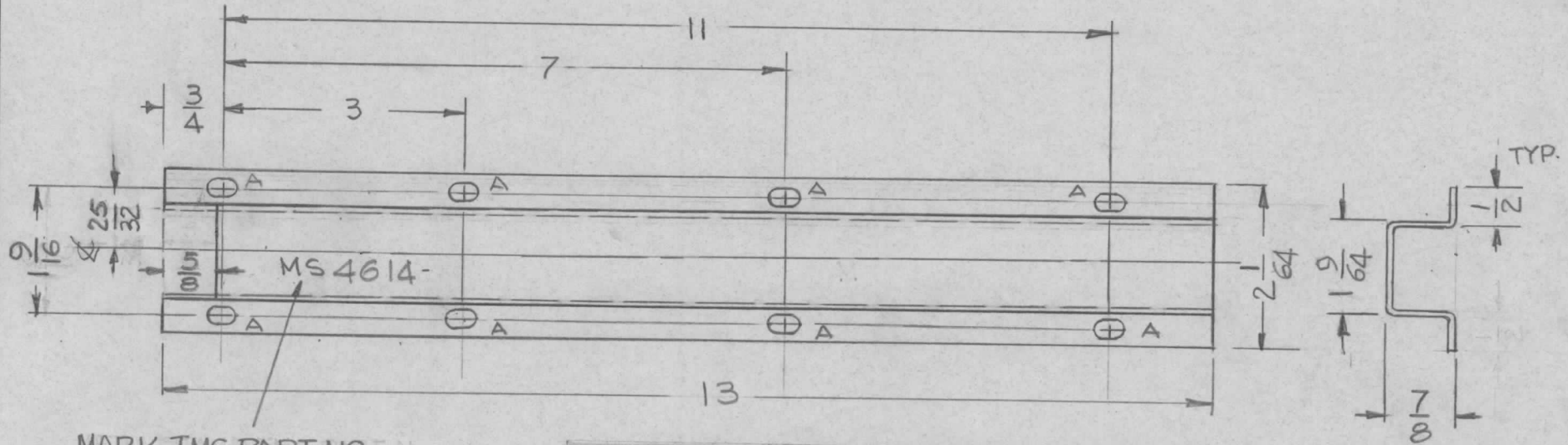
REF: LD1918

REQ.	ITEM	PART NO.	STURMER	DESCRIPTION	SYMBOL			
		.051		THE TECHNICAL MATERIEL CORP. MAMARONECK, NEW YORK				
		STOCK SIZE						
Ø	ORIGINAL RELEASE FOR PRODUCTION.	6/3/65	MS	ALUMINUM	CHASSIS, ATTENUATOR			
SYM	DESCRIPTION	DATE	CH. NO.	DRAFTS	CHECKER	ENG. APP.		
UNLESS OTHERWISE SPECIFIED DIMENSIONS ARE IN INCHES AND INCLUDE CHEMICALLY APPLIED OR PLATED FINISHES		SCALE 1:1						
DECIMALS .X ± .05 .XX ± .01 .XXX ± .005	TOLERANCES	FRACTIONS ± 1/64 ANGLES ± 0° 30'	CODE					
				5052-H32	M. STURMER 5-22-65	QC/B	MM/6/3/65	
				TYPE & TEMPER	HEAT TREAT. SPEC.	DRAWN	CHECKED	FINAL APPROVAL
				S404 VEL. IRIDITE			6-3-65	MS4609 Ø
				FINISH & SPEC. NO.	ELEC. DES. APP.	MECH. DES. APP.		

HOLE

A - 3/16 x 3/8 SLOT REQ. 8

REQ. PER UNIT	USED ON			MS4614	Ø
	MODEL	ASS'Y. NO.	DATE		
1	TST(-)10K		6-2-65		



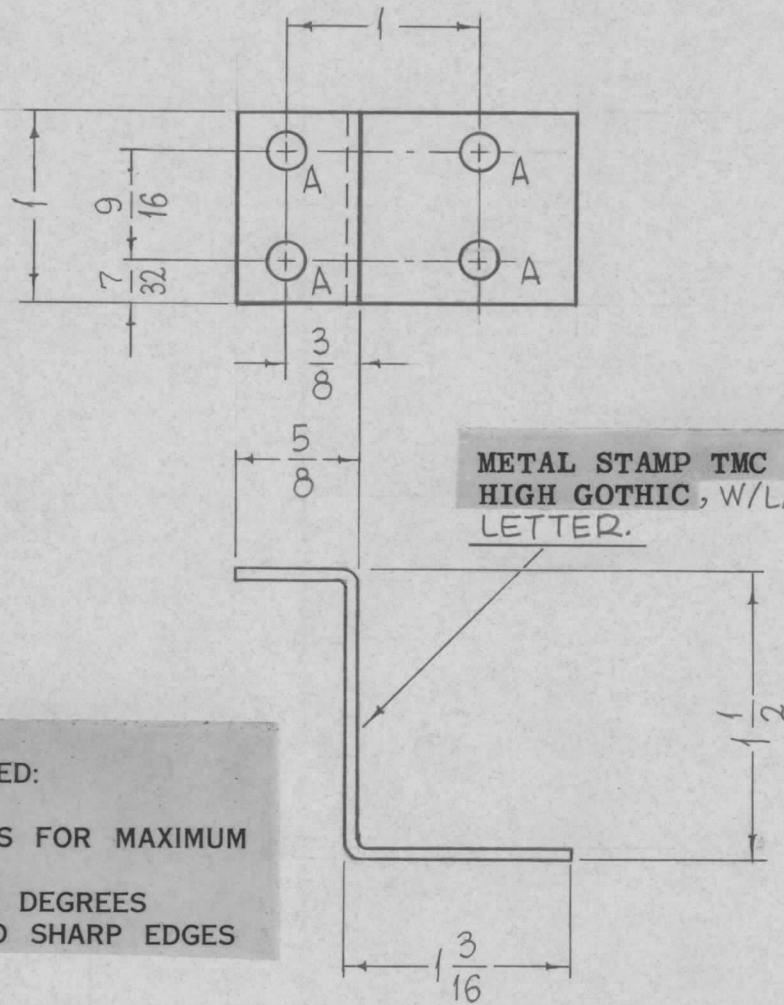
MARK TMC PART NO. No
1/8 HIGH GOTHIC W/LATEST
REV. LETTER

UNLESS OTHERWISE SPECIFIED:

1. USE MATERIAL THICKNESS FOR MAXIMUM RADIUS ON ALL BENDS
2. ALL ANGULAR BENDS 90 DEGREES
3. REMOVE ALL BURRS AND SHARP EDGES

							REQ. ITEM	PART NO.	DESCRIPTION	F. BUTTI	SYMBOL
							.064 THK		THE TECHNICAL MATERIEL CORP.		
							STOCK SIZE		MAMARONECK, NEW YORK		
Ø	ORIGINAL RELEASE	2/15/66					ALUMINUM		COVER, CABLE		
SYM	DESCRIPTION	DATE	CH. NO.	DRAFTS	CHECKER	ENG. APP.	MATERIAL				
UNLESS OTHERWISE SPECIFIED DIMENSIONS ARE IN INCHES AND INCLUDE CHEMICALLY APPLIED OR PLATED FINISHES		SCALE		1:2			5052-H32		G.D.L	RCB	MS4614
DECIMALS	TOLERANCES	FRACTIONS	CODE				TYPE & TEMPER	HEAT TREAT. SPEC.	DRAWN	CHECKED	FINAL APPROVAL
.X ± .05		± 1/64	A				5404 YEL. IRIDITE				MS4614
.XX ± .01		ANGLES					FINISH & SPEC. NO.		ELEC. DES. APP.	MECH. DES. APP.	Ø
.XXX ± .005		± 0° 30'									

REQ. PER UNIT	USED ON			MS4616	Ø
	MODEL	ASS'Y. NO.	DATE		
1	GPT200K	AX398	6-9-65		



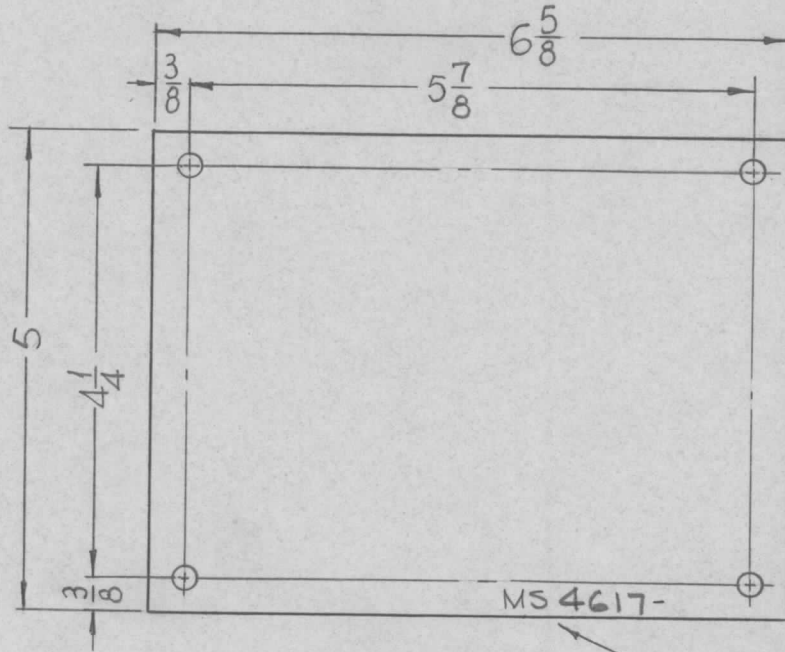
HOLES REQ.
A-13/64 DIA. 4

UNLESS OTHERWISE SPECIFIED:

1. USE MATERIAL THICKNESS FOR MAXIMUM RADIUS ON ALL BENDS
2. ALL ANGULAR BENDS 90 DEGREES
3. REMOVE ALL BURRS AND SHARP EDGES

SYM	DESCRIPTION	DATE	CH. NO.	DRAFTS	CHECKER	ENG. APP.	REQ. ITEM	PART NO.	BUDETTI	DESCRIPTION	SYMBOL					
Ø	ORIG. PROD. RELEASE	10/28/65					.064 THICK		THE TECHNICAL MATERIEL CORP. MAMARONECK, NEW YORK							
X	EXPER. RELEASE	6-9-65	#	JC			ALUMINUM		BRACKET, INSULATOR MTG.							
UNLESS OTHERWISE SPECIFIED DIMENSIONS ARE IN INCHES AND INCLUDE CHEMICALLY APPLIED OR PLATED FINISHES							5052-H32		J.C.	HD	10/25/65					
SCALE							TYPE & TEMPER		HEAT TREAT. SPEC.		DRAWN		CHECKED		FINAL APPROVAL	
DECIMALS .X ± .05 .XX ± .01 .XXX ± .005							S404-IRIDITE, 14-2 AL-COAT		FINISH & SPEC. NO.		ELEC. DES. APP.		MECH. DES. APP.		MS4616 Ø	
FRACTIONS ± 1/64 ANGLES ± 0° 30'																
TOLERANCES																

REQ. PER UNIT	USED ON			MS4617 \emptyset
	MODEL	ASS'Y. NO.	DATE	
1	TST ()10K		6-3-65	



HOLES:
13/64 DIA. (4 REQ.)

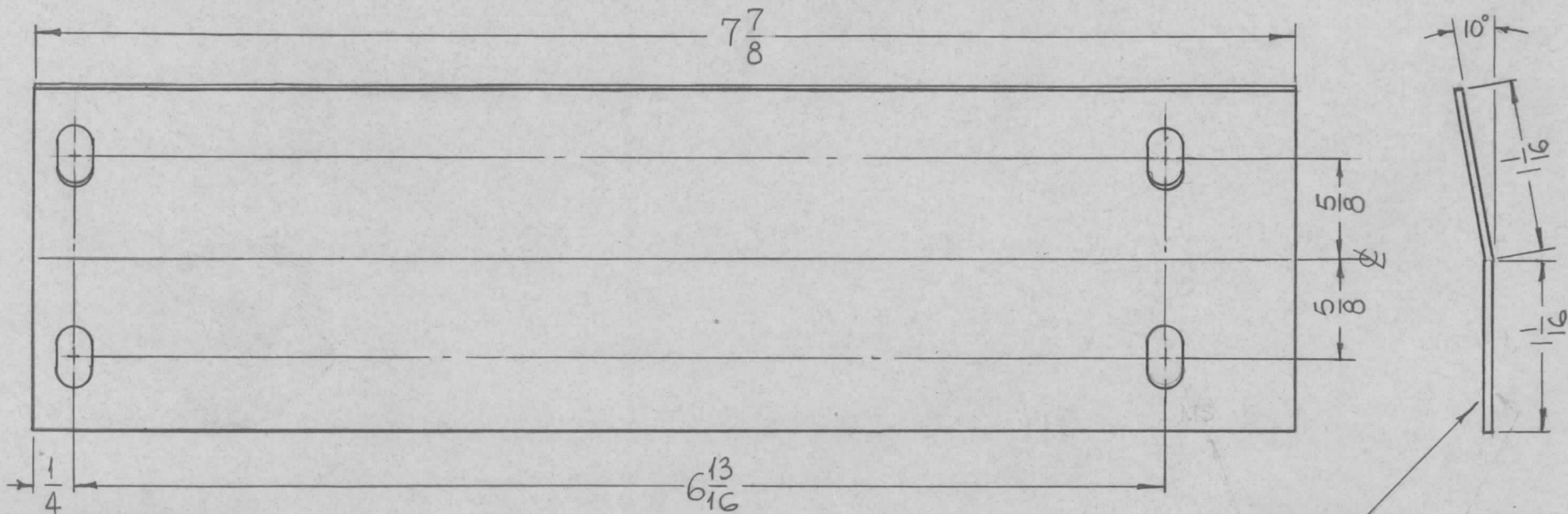
MARK STAMP
TMC PART NO.
1/8 HIGH GOTHIC
W/LATEST REV.
LETTER.

							REQ. ITEM	PART NO.	F. BUDETTI DESCRIPTION	SYMBOL
							.064 THICK		THE TECHNICAL MATERIEL CORP.	
							STOCK SIZE		MAMARONECK.	
							ALUMINUM		NEW YORK	
\emptyset	ORIGINAL RELEASE	2/15/66							PLATE, DECK	
SYM	DESCRIPTION	DATE	CH. NO.	DRAFTS	CHECKER	ENG. APP.	MATERIAL			
UNLESS OTHERWISE SPECIFIED DIMENSIONS ARE IN INCHES AND INCLUDE CHEMICALLY APPLIED OR PLATED FINISHES		SCALE					5052-H32			
		1/2:1					TYPE & TEMPER	HEAT TREAT. SPEC.	DRAWN	CHECKED
DECIMALS .X \pm .05 .XX \pm .01 .XXX \pm .005		FRACTIONS \pm 1/64 ANGLES \pm 0° 30'		CODE			S404 YEL. IRIDITE			
TOLERANCES		A					FINISH & SPEC. NO.	ELEC. DES. APP.	MECH. DES. APP.	MS4617 \emptyset

HOLES:

7/32 X 3/8 SLOTS (4REQ.)

REQ. PER UNIT	USED ON			MS4618	Ø
	MODEL	ASS'Y. NO.	DATE		
1	TER 18K-60DBF		6-5-65		



FINISH NOTES:

1. S404 - IRIDITE 14-2 AL-COAT.
2. S114 - ZINC CHROMATE PRIMER) FRONT AND
3. S115 - SMOOTH GRAY ENAMEL) REAR

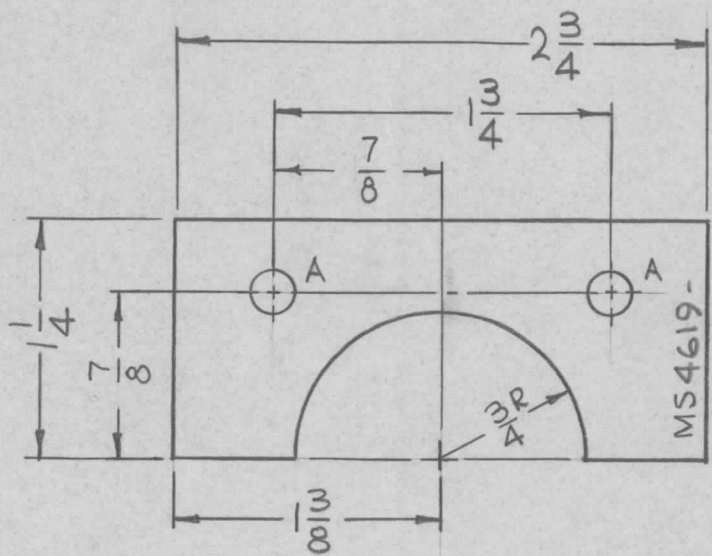
MARK TMC PART NO
PART NO. (MS4618-)
1/8 HIGH GOTHIC
W/ LATEST REV.
LETTER.

REQ.	ITEM	PART NO.	F. BUDETTI DESCRIPTION				SYMBOL
		.064 THICK	THE TECHNICAL MATERIEL CORP.				
		STOCK SIZE	MAMARONECK. NEW YORK				
Ø		ALUMINUM	STRIP, TRIM, FRONT				
		MATERIAL					
		5052-H32					
		TYPE & TEMPER	HEAT TREAT. SPEC.	DRAWN	CHECKED	FINAL APPROVAL	
		SEE NOTES					
		FINISH & SPEC. NO.	ELEC. DES. APP.	MECH. DES. APP.			
						MS4618 Ø	

UNLESS OTHERWISE SPECIFIED DIMENSIONS ARE IN INCHES AND INCLUDE CHEMICALLY APPLIED OR PLATED FINISHES	SCALE 1:1					
DECIMALS .X ± .05 .XX ± .01 .XXX ± .005	FRACTIONS ± 1/64 ANGLES ± 0° 30'	CODE A				

REQ. PER UNIT	USED ON		
	MODEL	ASS'Y. NO.	DATE
2	TST()10K		6-5-65

MS4619 Ø



HOLES:
A - 15/64 DIA (2 REQ.)

MARK TMC PART NO. P. NO. 1/8 HIGH GOTHIC W/LATEST REV. LETTER,

REQ. ITEM	PART NO.	F. BUDETTI DESCRIPTION			SYMBOL
	.081 THICK	THE TECHNICAL MATERIEL CORP.			
	STOCK SIZE	MAMARONECK. NEW YORK			
Ø	ALUMINUM	PLATE, CABLE			
	MATERIAL				
	5052-H32	<i>SPY</i>	<i>QCB</i>	<i>AMK</i>	
	TYPE & TEMPER	DRAWN	CHECKED	FINAL APPROVAL	
	S404 YEL. IRIDITE		<i>CC</i>	MS4619 Ø	
	FINISH & SPEC. NO.	ELEC. DES. APP.	MECH. DES. APP.		

UNLESS OTHERWISE SPECIFIED DIMENSIONS ARE IN INCHES AND INCLUDE CHEMICALLY APPLIED OR PLATED FINISHES

DECIMALS
.X ± .05
.XX ± .01
.XXX ± .005

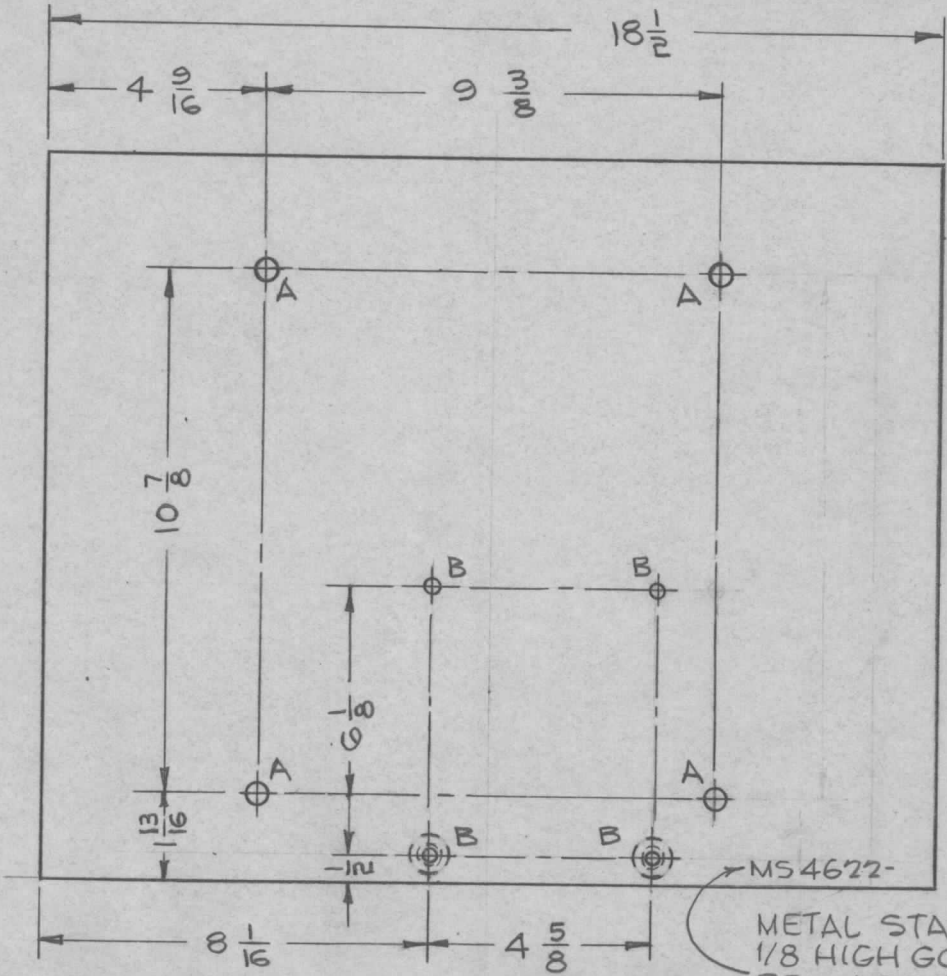
FRACTIONS
± 1/64
ANGLES
± 0° 30'

TOLERANCES

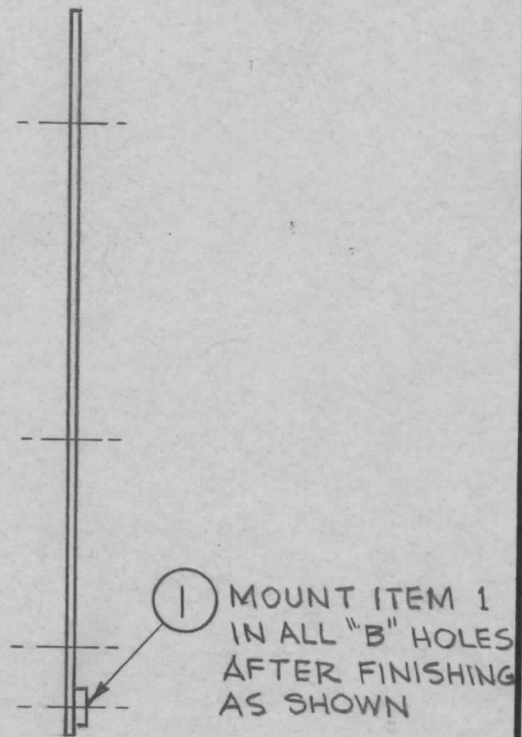
SCALE 1:1

CODE A

REQ. PER UNIT 1	USED ON			MS4622 Ø
	MODEL DDR-6F	ASS'Y. NO.	DATE	



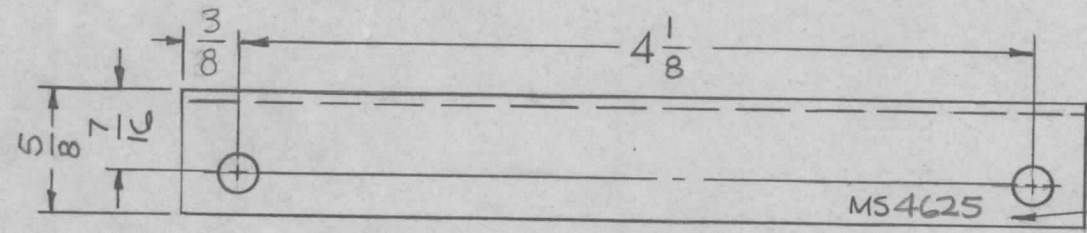
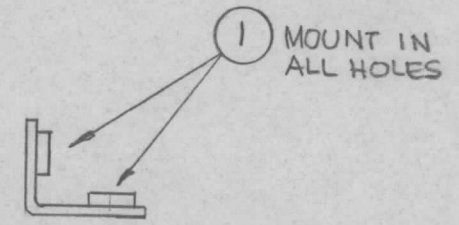
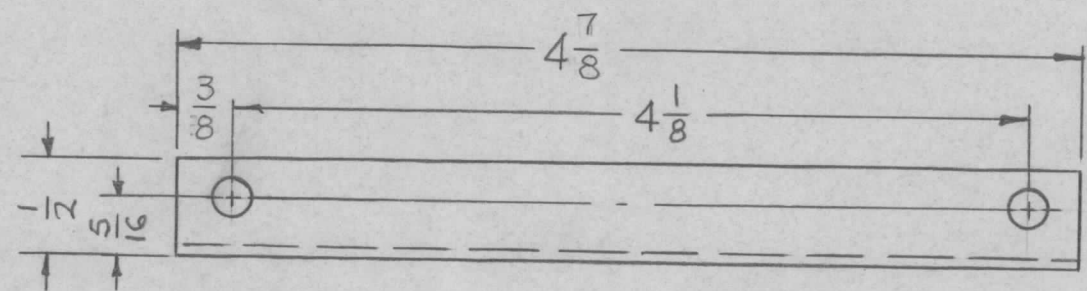
HOLE A 25/64 DIA 4 REQD
 " B .344-.347 2 REQD



METAL STAMP TMC PART NO. 1/8 HIGH GOTHIC, W/LATEST REV. LETTER.

		2	1	NT-129-420-6	NUT, ROUND, SWAGE TYPE		B	
		REQ. ITEM	PART NO.		I. JOHNSON DESCRIPTION		SYMBOL	
		1/8 THK			THE TECHNICAL MATERIEL CORP. MAMARONECK, NEW YORK			
		STOCK SIZE			PLATE, XFMR. MTG.			
Ø	ORIGINAL RELEASE FOR PRODUCTION	6/10/65	MA	JC	ALUMINUM			
SYM	DESCRIPTION	DATE	CH. NO.	DRAFTS	CHECKER	ENG. APP.	MATERIAL	
UNLESS OTHERWISE SPECIFIED DIMENSIONS ARE IN INCHES AND INCLUDE CHEMICALLY APPLIED OR PLATED FINISHES		SCALE	4/1					5052-H32
DECIMALS .X ± .05 .XX ± .01 .XXX ± .005	TOLERANCES	FRACTIONS ± 1/64 ANGLES ± 0° 30'	CODE	TYPE & TEMPER		HEAT TREAT. SPEC.	DRAWN	
				S-404 YEL IRIDITE			CHECKED	
				FINISH & SPEC. NO.		ELEC. DES. APP.	MECH. DES. APP.	
						FINAL APPROVAL		
						MS4622 Ø		

REQ. PER UNIT 2	USED ON			MS4625 \emptyset
	MODEL TST-10K	ASS'Y. NO.	DATE 5-28-65	



HOLES;
.191 -.194 DIA. (4REQ)

MARK TMC PART NO.
1/8 HIGH GOTHIC W/LATEST
REV. LETTER.

UNLESS OTHERWISE SPECIFIED:

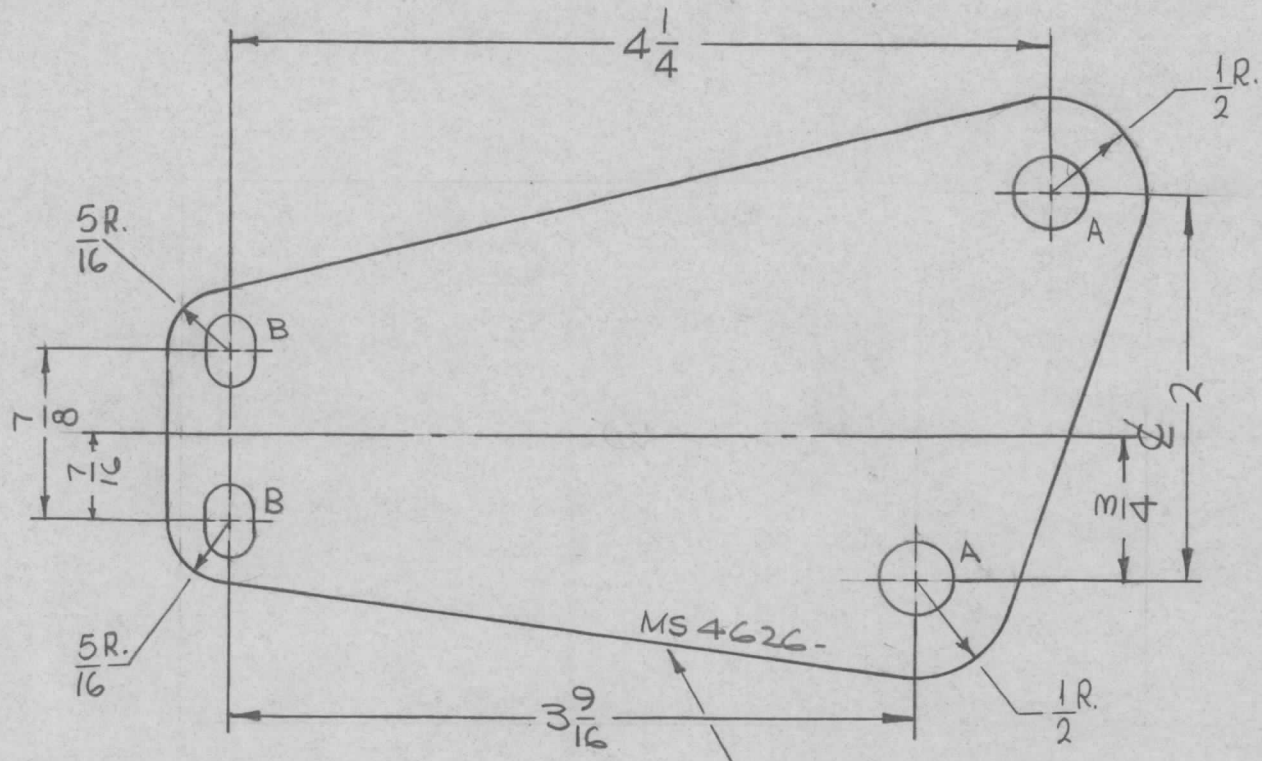
1. USE MATERIAL THICKNESS FOR MAXIMUM RADIUS ON ALL BENDS
2. ALL ANGULAR BENDS 90 DEGREES
3. REMOVE ALL BURRS AND SHARP EDGES
4. MOUNT INSERTS AFTER FINISHING

FINISH NOTE:
COPPER FLASH
S245 SILVER PLATE
S423 IRIDITE 18-P SILVER KOTE

\emptyset	ORIGINAL RELEASE	2/15/66	\emptyset					
X.	S423 ADDED	7-1-65	X1	<i>shg</i>	<i>ae</i>			<i>hde</i>
SYM	DESCRIPTION	DATE	CH. NO.	DRAFTS	CHECKER	ENG. APP.	SCALE 1:1	
UNLESS OTHERWISE SPECIFIED DIMENSIONS ARE IN INCHES AND INCLUDE CHEMICALLY APPLIED OR PLATED FINISHES		CODE A						
DECIMALS .X \pm .05 .XX \pm .01 .XXX \pm .005	TOLERANCES	FRACTIONS \pm 1/64 ANGLES \pm 0° 30'						

4	1	NT129-632-4	NUT, PLAIN, SPLINE		
REQ. ITEM	PART NO.		F. BUDETTI	DESCRIPTION	SYMBOL
.064 THICK STOCK SIZE			THE TECHNICAL MATERIEL CORP. MAMARONECK, NEW YORK		
ALUMINUM MATERIAL			BRACKET, MTG BLOWER		
5052-H32			<i>shg</i>	<i>JCB</i>	<i>hde</i>
TYPE & TEMPER	HEAT TREAT. SPEC.	DRAWN	CHECKED	FINAL APPROVAL	
SEE NOTE			<i>aa</i>	MS4625 \emptyset	
FINISH & SPEC. NO.		ELEC. DES. APP.	MECH. DES. APP.		

REQ. PER UNIT	USED ON		MS4626 \emptyset
	MODEL	ASS'Y. NO.	
	TST-10K		6-11-65



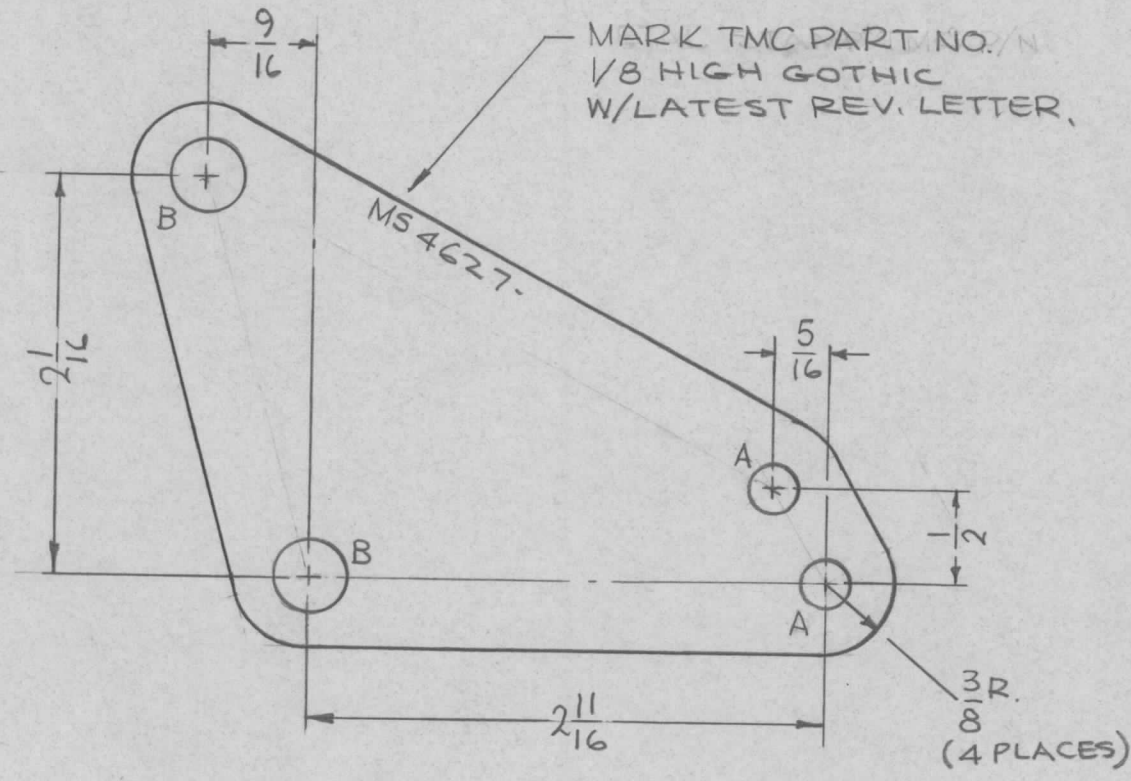
HOLES:
 A-3/8 DIA. (2REQ.)
 B-1/4 X 3/8 SLOT (2REQ.)

NOTE:
 ROUND ALL EDGES.

MARK TMC PART NO.
 1/8 HIGH GOTHIC W/LATEST
 REV. LETTER.

REQ.	ITEM	PART NO.	F. BUDETTI	DESCRIPTION	SYMBOL
		.051 THICK		THE TECHNICAL MATERIEL CORP.	
		STOCK SIZE		MAMARONECK.	
		COPPER		NEW YORK	
		MATERIAL		PLATE, CONNECTING CAP. & TUBE	
		HOT ROLLED			
		TYPE & TEMPER		DRAWN	
		HEAT TREAT. SPEC.		CHECKED	
		S245 SILVER PLATE		FINAL APPROVAL	
		FINISH & SPEC. NO.			
					MS4626 \emptyset

REQ. PER UNIT	USED ON			MS4627 \emptyset
	MODEL	ASS'Y. NO.	DATE	
1	TST-10K		6-14-65	

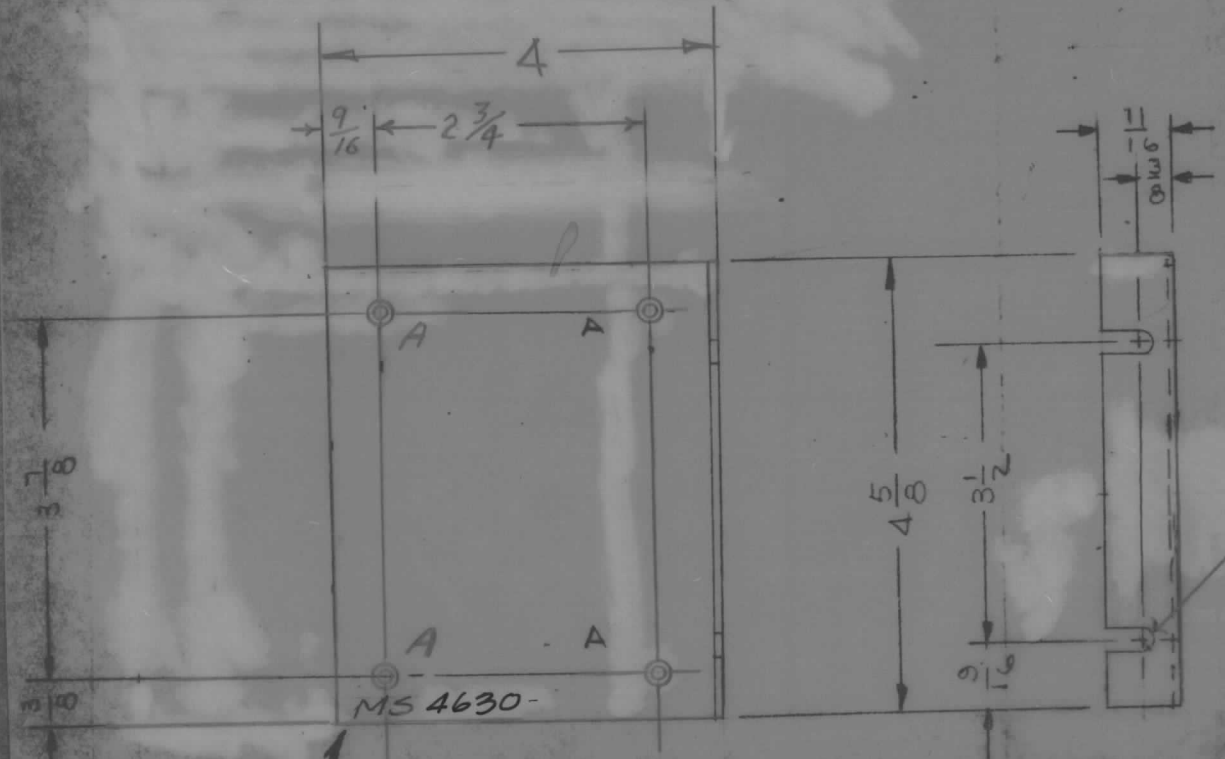


							REQ. ITEM	PART NO.	F. BUDETTI DESCRIPTION			SYMBOL	
							.051 THICK		THE TECHNICAL MATERIEL CORP.				
							STOCK SIZE		MAMARONECK, NEW YORK				
							COPPER		PLATE, CONTACT ELECT.				
							MATERIAL						
UNLESS OTHERWISE SPECIFIED DIMENSIONS ARE IN INCHES AND INCLUDE CHEMICALLY APPLIED OR PLATED FINISHES							HOT ROLLED						
SCALE 1:1							TYPE & TEMPER		DRAWN		CHECKED		FINAL APPROVAL
DECIMALS .X ± .05 .XX ± .01 .XXX ± .005							S245 SILVER PLATE						MS4627 \emptyset
FRACTIONS ± 1/64 ANGLES ± 0° 30'							FINISH & SPEC. NO.		ELEC. DES. APP.		MECH. DES. APP.		
TOLERANCES													
CODE A													

REQ. PER UNIT	USED ON		
	MODEL	ASS'Y. NO.	DATE
2	RTIE-1	A5107, A5108	6/17/65
2	RTIE-1		6/17/65
2	RTIF-1		6/17/65

MS 4630

HOLE	DESCRIPTION	REQ
A	3/16 DIA, C'SINK 82° TO .337 DIA	4

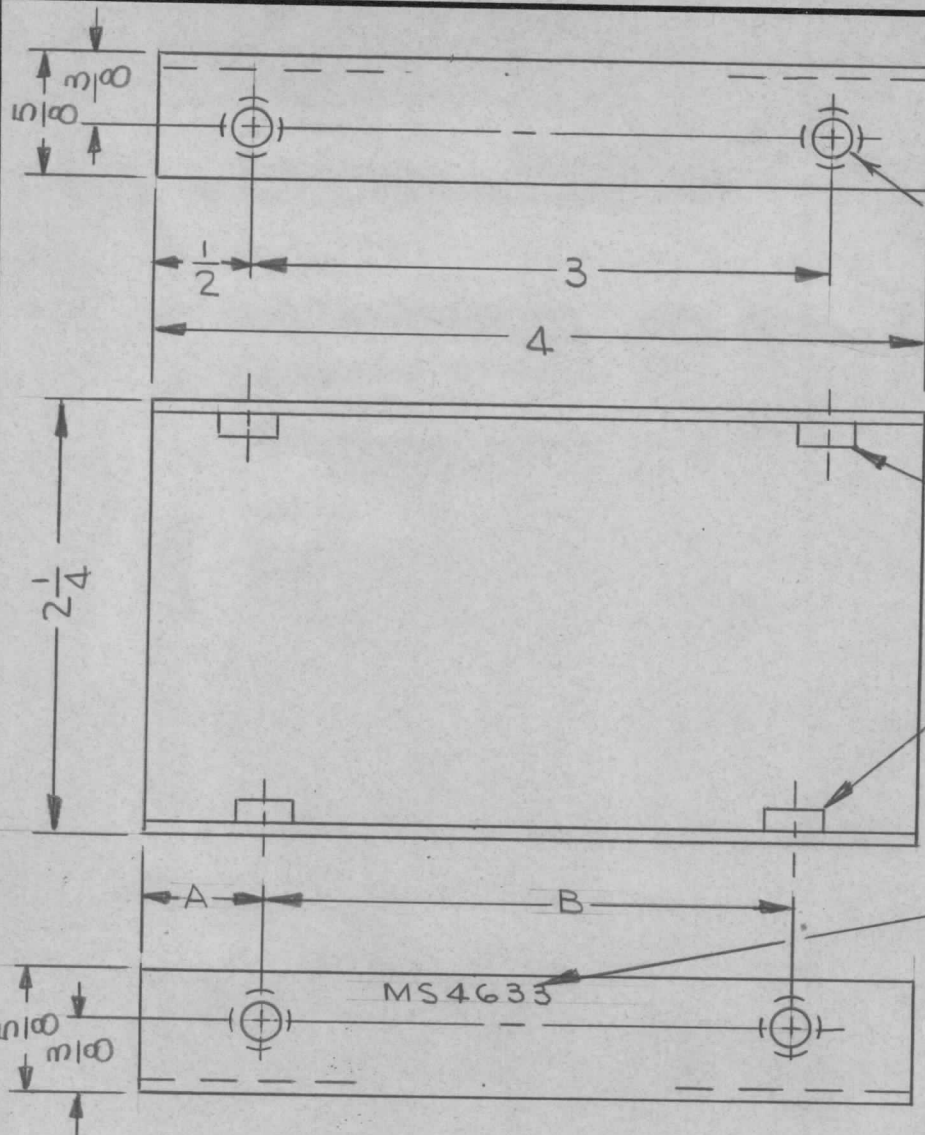


METAL STAMP TMC PART
NO W/LATEST REVISION LETTER
1/8 HIGH GOTHIC

UNLESS OTHERWISE SPECIFIED:

1. USE MATERIAL THICKNESS FOR MAXIMUM RADIUS ON ALL BENDS
2. ALL ANGULAR BENDS 90 DEGREES
3. REMOVE ALL BURRS AND SHARP EDGES

SYM	DESCRIPTION	DATE	CH. NO.	DRAFTS	CHECKER	ENG. APP.	REQ. ITEM	PART NO.	EATON	DESCRIPTION	SYMBOL
	ORIGINAL RELEASE	1/24/65								THE TECHNICAL MATERIEL CORP. MAMARONECK, NEW YORK	PLATE, END - PC CARD BIN
X1	ADDED RTIE-1 & RTIF-1 MODEL & ASSY NO. 3.	6/21/65		JL	J.M.			.081 THK STOCK SIZE			
X	EXPERIMENTAL RELEASE	6-17-65	#	JC				ALUMINUM			
	UNLESS OTHERWISE SPECIFIED DIMENSIONS ARE IN INCHES AND INCLUDE CHEMICALLY APPLIED OR PLATED FINISHES	SCALE						5052-H32			
	DECIMALS X ± .05 XX ± .01	FRACTIONS ± 1/64 ANGLES	CODE A					5404 YEL. IRIDITE			
	TOLERANCES							FINISH & SPEC. NO.	ELEC. DES. APP.	MECH. DES. APP.	MS4630



REQ. PER UNIT	USED ON			MS4633	A
	MODEL	ASS'Y. NO.	DATE		
1 EA	DDRR-5M	RAK-22B	6/17/65		

.221-.224 DIA HOLES (4 REQ)

TMC PART NO.	DIMENSION	
	-A-	-B-
MS4633-1	5/8	2 3/4
MS4633-2	1/2	3

UNLESS OTHERWISE SPECIFIED:

1. USE MATERIAL THICKNESS FOR MAXIMUM RADIUS ON ALL BENDS
2. ALL ANGULAR BENDS 90 DEGREES
3. REMOVE ALL BURRS AND SHARP EDGES
4. MOUNT INSERTS AFTER FINISHING

METAL STAMP TMC PART NO. 1/8 HIGH GOTHIC W/LATEST REV. LETTER

SYM	DESCRIPTION	DATE	CH. NO.	DRAFTS	CHECKER	ENG. APP.
A	IT-1 WAS NT129-440-4- ASSY. No. ADDED.	10/5/65	14928	AVS	JCB	JCB
Ø	ORIGINAL RELEASE FOR PRODUCTION	6-24-65	Ø	DVV		
X	EXPERIMENTAL RELEASE	6-18-65	-	JC		

UNLESS OTHERWISE SPECIFIED DIMENSIONS ARE IN INCHES AND INCLUDE CHEMICALLY APPLIED OR PLATED FINISHES

SCALE 1/1

DECIMALS .X ± .05 .XX ± .01 .XXX ± .005

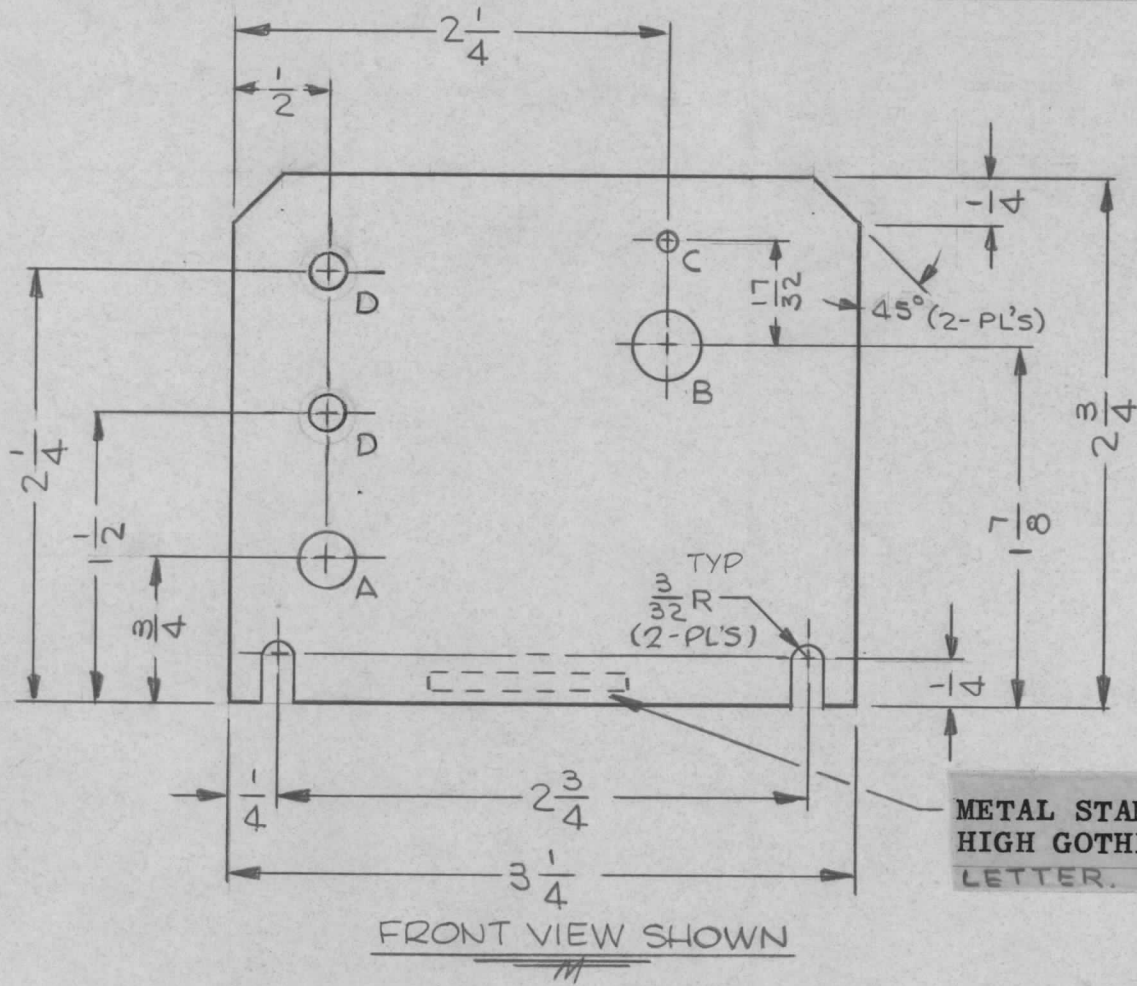
FRACTIONS ± 1/64 ANGLES ± 0° 30'

TOLERANCES

CODE

4	1	NT129-832-4	NUT, PLAIN, SPLINE		
REQ. ITEM	PART NO.		EATON	DESCRIPTION	SYMBOL
	.064 THK		THE TECHNICAL MATERIEL CORP. MAMARONECK, NEW YORK		
	STOCK SIZE		MTG BRACKET (AUXILIARY KEYS)		
	ALUMINUM				
	MATERIAL				
	5052-H32		JL	JCB	JCB
TYPE & TEMPER	HEAT TREAT. SPEC.	DRAWN	CHECKED	FINAL APPROVAL	
YELLOW IRIDITE PER S404			WJpegan 6/29/65	MS4633 A	
FINISH & SPEC. NO.	ELEC. DES. APP.	MECH. DES. APP.			

REQ. PER UNIT	USED ON		MS4634 A
	MODEL	DATE	
1	RAK-22B	6-17-65	



HOLE LEGEND		
HOLE	DESCRIPTION	REQ'D
A	5/16 DIA	1
B	3/8 DIA	1
C	1/8 DIA	1
D	17/64 DIA.	2

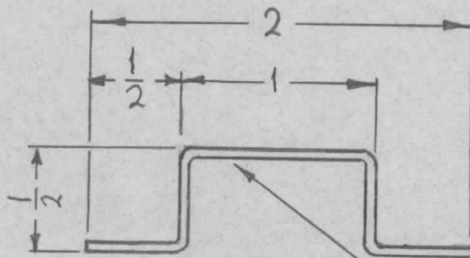
METAL STAMP TMC PART NO. 1/8
HIGH GOTHIC ON REAR OF BRACKET W/LATEST REV.
LETTER.

FRONT VIEW SHOWN

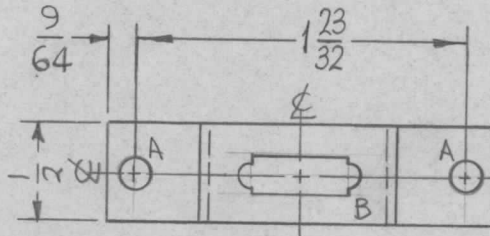
REF: LD1948

							REQ. ITEM	PART NO.	EATON	DESCRIPTION	SYMBOL
A	② "A" HOLES DELETED HOLES ADDED ORIGINAL RELEASE FOR PRODUCTION			1/28/65	14361	D.V.K.	JCB	MMH	.064 THK	THE TECHNICAL MATERIEL CORP. MAMARONECK, NEW YORK	MTG BRACKET, RESISTOR
Ø				6-24-65	Ø	D.V.K.		STOCK SIZE			
X	EXPERIMENTAL RELEASE			6-10-65	-M	JC		ALUMINUM			
SYM	DESCRIPTION	DATE	CH. NO.	DRAFTS	CHECKER	ENG. APP.	MATERIAL				
UNLESS OTHERWISE SPECIFIED DIMENSIONS ARE IN INCHES AND INCLUDE CHEMICALLY APPLIED OR PLATED FINISHES		SCALE		1/1		5052-H32		JL	JCB	J.E. Eaton	6/24/65
DECIMALS .X ± .05 .XX ± .01 .XXX ± .005	TOLERANCES	FRACTIONS ± 1/64 ANGLES ± 0° 30'	CODE			YELLOW IRIDITE PER S404		DRAWN	CHECKED	FINAL APPROVAL	
							FINISH & SPEC. NO.	ELEC. DES. APP.	MECH. DES. APP.	MS4634 A	

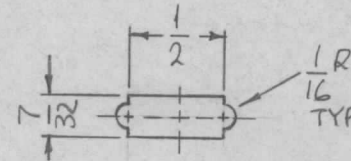
REQ. PER UNIT	USED ON			MS4636 \emptyset
	MODEL	ASS'Y. NO.	DATE	
1	RFTA-1		6-15-65	



HOLES:
 A ~ 5/32 DIA. (2 REQ.)
 B ~ SEE DETAIL



MARK TMC P/N (MS4636)
 1/8 HIGH GOTHIC
 W/LATEST REV.
 LETTER.



B-DETAIL

UNLESS OTHERWISE SPECIFIED:

1. USE MATERIAL THICKNESS FOR MAXIMUM RADIUS ON ALL BENDS
2. ALL ANGULAR BENDS 90 DEGREES
3. REMOVE ALL BURRS AND SHARP EDGES.

REF: LD1951

							REQ. ITEM	PART NO.	F. BUDETTI	DESCRIPTION	SYMBOL
							.064 THICK			THE TECHNICAL MATERIEL CORP.	
							STOCK SIZE			MAMARONECK, NEW YORK	
\emptyset	ORIGINAL RELEASE	4/15/66					ALUMINUM			BRACKET, MTG. CONNECTOR	
SYM	DESCRIPTION	DATE	CH. NO.	DRAFTS	CHECKER	ENG. APP.	MATERIAL				
UNLESS OTHERWISE SPECIFIED DIMENSIONS ARE IN INCHES AND INCLUDE CHEMICALLY APPLIED OR PLATED FINISHES		SCALE					5052-H32		<i>SPS</i>	<i>JCS</i>	<i>M. J. Hay</i>
DECIMALS	FRACTIONS	CODE					TYPE & TEMPER	HEAT TREAT. SPEC.	DRAWN	CHECKED	FINAL APPROVAL
.X \pm .05	\pm 1/64	A					S404 YEL. IRIDITE			<i>OU</i>	MS4636 \emptyset
.XX \pm .01	ANGLES						FINISH & SPEC. NO.		ELEC. DES. APP.	MECH. DES. APP.	
.XXX \pm .005	\pm 0° 30'										

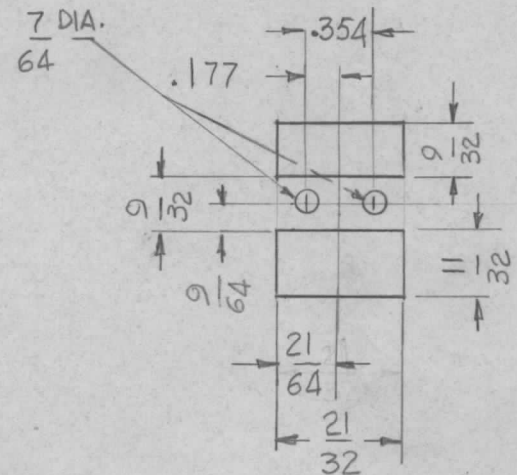
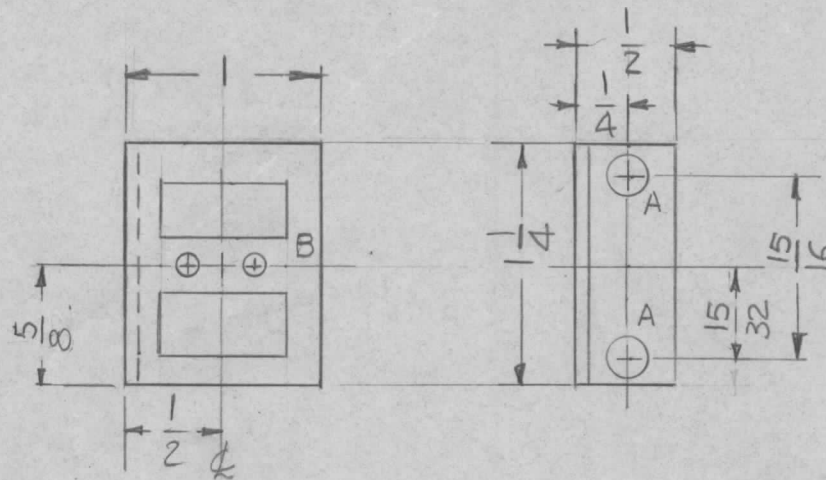
REQ. PER UNIT	USED ON		
	MODEL	ASS'Y. NO.	DATE
1	TST-10K	AZ 107	7-16-65
1	TST-10K	AZ 108	7-29-65
1	TST-10K	AZ 105	7-29-65

MS4637 \emptyset

HOLES - REQ.

A - 13/64 DIA 2

B - SEE DETAIL 1



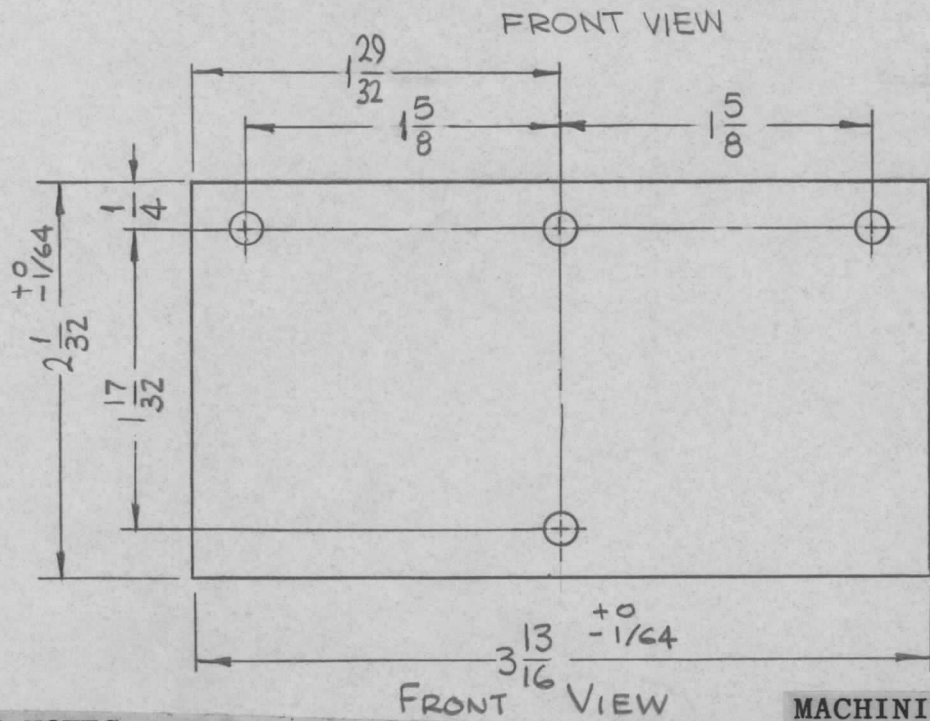
DETAIL "B"
1REQ

UNLESS OTHERWISE SPECIFIED:

1. USE MATERIAL THICKNESS FOR MAXIMUM RADIUS ON ALL BENDS
2. ALL ANGULAR BENDS 90 DEGREES
3. REMOVE ALL BURRS AND SHARP EDGES

SYM	DESCRIPTION	DATE	CH. NO.	DRAFTS	CHECKER	ENG. APP.	REQ. ITEM	PART NO.	F. BUDETTI DESCRIPTION	SYMBOL		
\emptyset	ORIGINAL RELEASE	3/15/66										
X3	DIM. 5/8 WAS 11/32	8-10-65	X3	G.D.L.	DR			.064 THK	THE TECHNICAL MATERIEL CORP. MAMARONECK. NEW YORK	BRACKET MTG. RELAY		
X2	ASS'Y NO'S ADDED	7-29-65	X2	SPB				STOCK SIZE				
X1	REVISED & REDRAWN	7-15-65	X1	G.D.L.	DR			ALUMINUM				
								MATERIAL				
	UNLESS OTHERWISE SPECIFIED DIMENSIONS ARE IN INCHES AND INCLUDE CHEMICALLY APPLIED OR PLATED FINISHES	SCALE	1:1						5052-H32	G.D.L.	QC/B	DR
	DECIMALS .X \pm .05 .XX \pm .01 .XXX \pm .005	FRACTIONS \pm 1/64 ANGLES \pm 0° 30'	CODE	A						DRAWN	CHECKED	FINAL APPROVAL
	TOLERANCES							S404 YEL. IRIDITE		DR		
								FINISH & SPEC. NO.	ELEC. DES. APP.	MECH. DES. APP.	MS4637 \emptyset	

REQ. PER UNIT	USED ON			MS4638	Ø
	MODEL	ASS'Y. NO.	DATE		
1	TSTA-2.5K		6-18-65		



HOLES:
5/32 DIA. (4 REQ.)

MARK TMC PART NO. (MS4638-)
1/8 HIGH GOTHIC W/LATEST
REV. LETTER. (ON REAR)

FINISH NOTES:

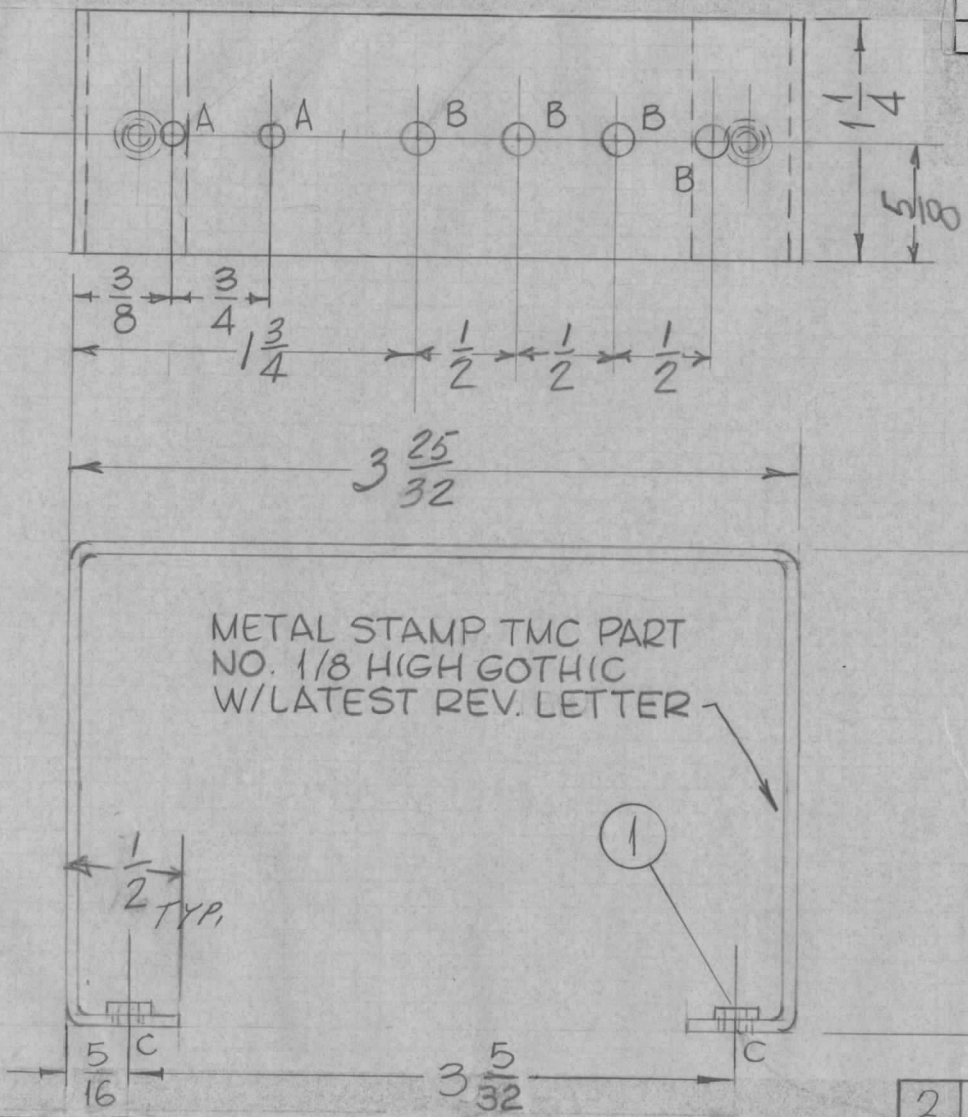
1. S404 - IRIDITE 14-2 AL-COAT.
2. S114 - ZINC CHROMATE PRIMER) FRONT AND
3. S115 - SMOOTH GRAY ENAMEL) EDGES ONLY

MACHINING:

1. MILL ALL EDGES.
2. HOLES MUST BE DRILLED, UNLESS OTHERWISE SPECIFIED.
3. LATERAL BOW OF DOOR, MUST BE KEPT TO .031 TOLERANCE.
4. DOOR MUST BE FREE OF ALL MACHINING MARKS, GOUGES AND SCRATCHES. IF NECESSARY, SAND FRONT OF DOOR WITH NO. 120 GRIT SANDPAPER.

				REQ. ITEM	PART NO.	F. BUDETTI DESCRIPTION			SYMBOL	
				3/16 THICK		THE TECHNICAL MATERIEL CORP.				
				STOCK SIZE		MAMARONECK, NEW YORK				
				ALUMINUM		DOOR, PANEL FRONT				
				MATERIAL						
Ø ORIGINAL RELEASE FOR PRODUCTION	33-66	AA	Jc	QCB	mc					
SYM	DESCRIPTION	DATE	CH. NO.	DRAFTS	CHECKER	ENG. APP.				
UNLESS OTHERWISE SPECIFIED DIMENSIONS ARE IN INCHES AND INCLUDE CHEMICALLY APPLIED OR PLATED FINISHES		SCALE		2024-T3						
		1:1		TYPE & TEMPER		HEAT TREAT. SPEC.	DRAWN	CHECKED	FINAL APPROVAL	
DECIMALS .X ± .05 .XX ± .01 .XXX ± .005		FRACTIONS ± 1/64 ANGLES ± 0° 30'		TOLERANCES		SEE NOTES				
		CODE A		FINISH & SPEC. NO.		ELEC. DES. APP.	MECH. DES. APP.	MS4638 Ø		

REQ. PER UNIT 8	USED ON			MS4639	A
	MODEL LRCC-1	ASS'Y. NO.	DATE		



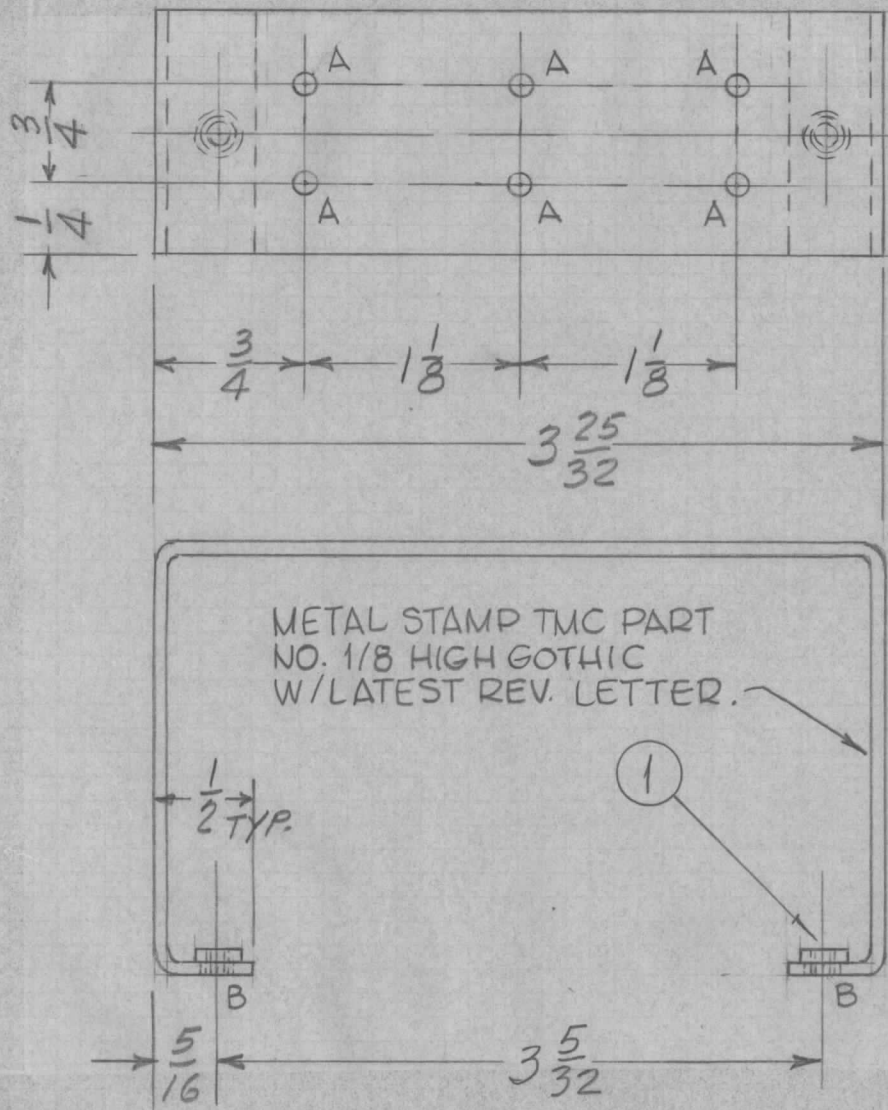
HOLES	REQ.
A- 1/8 DIA.	2
B- 9/64 DIA.	4
C-.191-.194 DIA.	2

- UNLESS OTHERWISE SPECIFIED:
1. USE MATERIAL THICKNESS FOR MAXIMUM RADIUS ON ALL BENDS
 2. ALL ANGULAR BENDS 90 DEGREES
 3. REMOVE ALL BURRS AND SHARP EDGES
 4. MOUNT INSERTS AFTER FINISHING

REF-LD1952

		2	1	NT129-632-4	NUT, ROUND, SPLINE				
		REQ. ITEM	PART NO.		ZETENA	DESCRIPTION	SYMBOL		
		.062 THICK			THE TECHNICAL MATERIEL CORP.				
		STOCK SIZE			MAMARONECK, NEW YORK				
A	3 5/32 DIM WAS 3 5/8	8-4-65	14490	DVU	BRACKET, RESISTOR MOUNTING				
Ø	ORIGINAL RELEASE FOR PRODUCTION	6-22-65	AA						
SYM	DESCRIPTION	DATE	CH. NO.	DRAFTS	CHECKER	ENG. APP.			
UNLESS OTHERWISE SPECIFIED DIMENSIONS ARE IN INCHES AND INCLUDE CHEMICALLY APPLIED OR PLATED FINISHES		SCALE							
DECIMALS	FRACTIONS	CODE							
.X ± .05	± 1/64								
.XX ± .01	ANGLES								
.XXX ± .005	± 0° 30'								
TOLERANCES									
		5052-H32		HEAT TREAT. SPEC.		DC	DRAWN		
		S404-IRIDITE, 14-2 ALCOAT		FINISH & SPEC. NO.		CHECKED		FINAL APPROVAL	
						ELEC. DES. APP.		MECH. DES. APP.	
								MS4639 A	

REQ. PER UNIT	USED ON			MS4640 A
	MODEL	ASS'Y. NO.	DATE	
6	LRCM-1	AX568	6-22-65	



METAL STAMP TMC PART NO. 1/8 HIGH GOTHIC W/LATEST REV. LETTER.

HOLES	REQ.
A-1/8 DIA.	6
B-.191-.194 DIA.	2
C-13/64 DIA.	2

UNLESS OTHERWISE SPECIFIED:

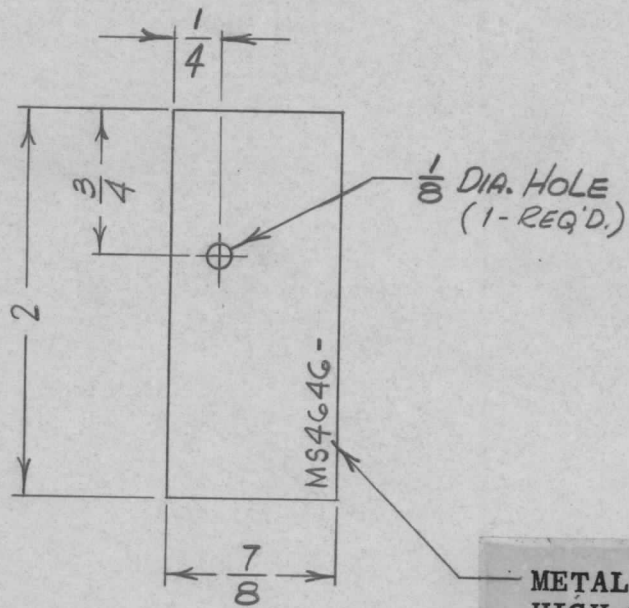
1. USE MATERIAL THICKNESS FOR MAXIMUM RADIUS ON ALL BENDS.
2. ALL ANGULAR BENDS 90°.
3. REMOVE ALL BURRS AND SHARP EDGES.
4. MOUNT INSERTS AFTER FINISHING.

REF. LD1953

							2	1	NT129-632-4	NUT, ROUND, SPLINE			
							REQ. ITEM	PART NO.		ZETENA	DESCRIPTION	SYMBOL	
									.062 THICK	THE TECHNICAL MATERIEL CORP. MAMARONECK, NEW YORK			
									ALUMINUM	BRACKET, RESISTOR MOUNTING			
									MATERIAL				
									5052-H32	DC	 JCB 6/22/65		
									TYPE & TEMPER	HEAT TREAT. SPEC.	DRAWN	CHECKED	FINAL APPROVAL
									S404-IRIDITE, 14-2 AL-COAT		 JCB MS4640 A		
									FINISH & SPEC. NO.	ELEC. DES. APP.	MECH. DES. APP.		

A	SIDE VIEW, 2" HOLES ADDED	10/1/65	14959	REV.	JCB	JCB
Ø	ORIGINAL RELEASE FOR PRODUCTION	6-22-65			JC	
SYM	DESCRIPTION	DATE	CH. NO.	DRAFTS	CHECKER	ENG. APP.
UNLESS OTHERWISE SPECIFIED DIMENSIONS ARE IN INCHES AND INCLUDE CHEMICALLY APPLIED OR PLATED FINISHES		SCALE				
DECIMALS	FRACTIONS	CODE				
.x ± .05	± 1/64	TOLERANCES				
.xx ± .01	ANGLES					
.xxx ± .005	± 0° 30'					

REQ. PER UNIT	USED ON			MS4646 \emptyset
	MODEL	ASS'Y. NO.	DATE	
3	LRCD-1		6-30-65	



METAL STAMP TMC PART NO. 1/8
HIGH GOTHIC W/LATEST REV.
LETTER.

REQ. ITEM	PART NO.	EATON	DESCRIPTION	SYMBOL
	.062 THK		THE TECHNICAL MATERIEL CORP. MAMARONECK, NEW YORK	
	STOCK SIZE		COVER, CUTOUT, RELAY	
	ALUMINUM			
	MATERIAL			
	5052-H32	H. Austin	JCB	9/9/65
	TYPE & TEMPER	HEAT TREAT. SPEC.	DRAWN	CHECKED
	YELLOW IRIDITE	S404		
	FINISH & SPEC. NO.	ELEC. DES. APP.	MECH. DES. APP.	
				MS4646 \emptyset

UNLESS OTHERWISE SPECIFIED
DIMENSIONS ARE IN INCHES AND INCLUDE
CHEMICALLY APPLIED OR PLATED FINISHES

SCALE 1:1

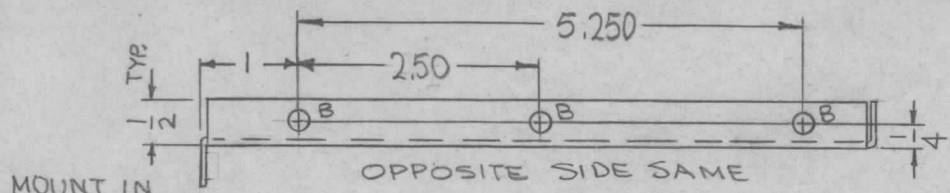
DECIMALS
.X \pm .05
.XX \pm .01
.XXX \pm .005

FRACTIONS
 \pm 1/64
ANGLES
 \pm 0° 30'

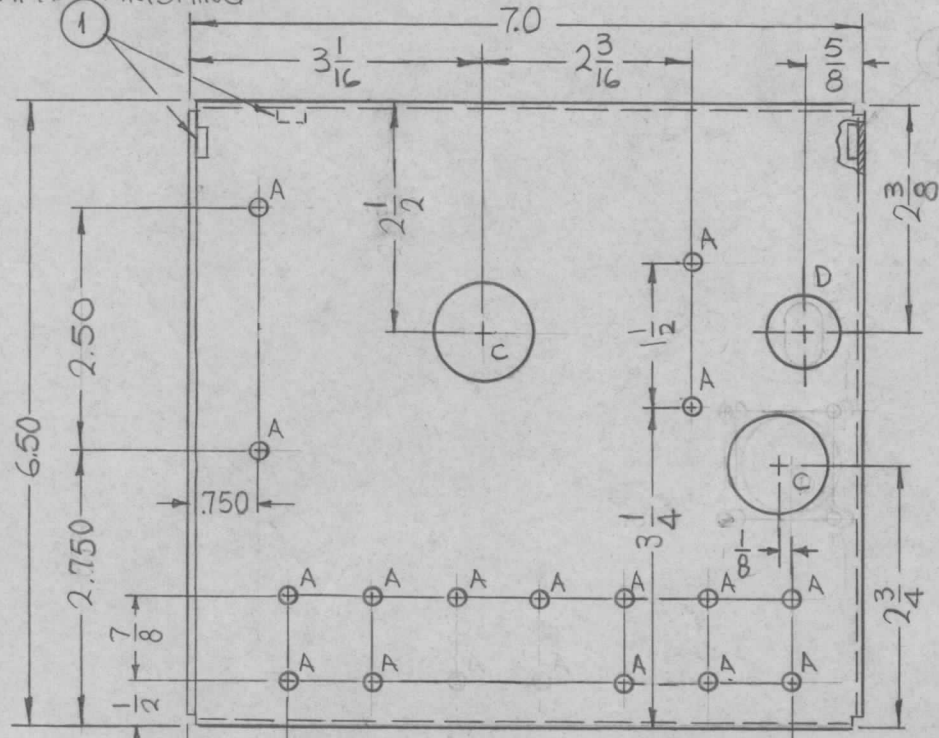
CODE A

ORIGINAL RELEASE 9/9/65 \emptyset

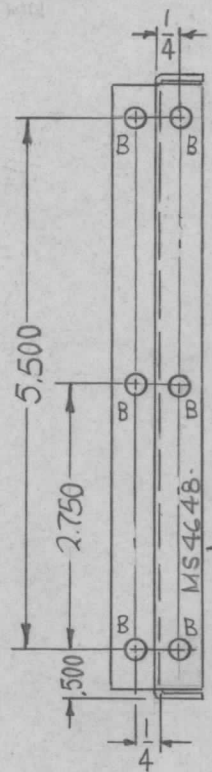
REQ. PER UNIT	USED ON			MS4648	Ø
	MODEL	ASS'Y. NO.	DATE		
1	TST-10K		6-24-65		



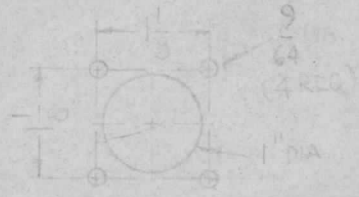
MOUNT IN ALL 'B' HOLES AFTER FINISHING



7 ROWS OF 'A' HOLES
7/8 APART TOL. NON ACCUMULATIVE



- HOLES: REQ:
- A - 11/64 DIA — 16
 - B - .191-.194 DIA. — 12
 - C - 1" DIA. — 2
 - D - 3/4 DIA. — 1
 - E - 5/16 DIA. SLOT — 1



METAL STAMP TMC P/N 1/8 HIGH GOTHIC W/LATEST REV. LETTER.

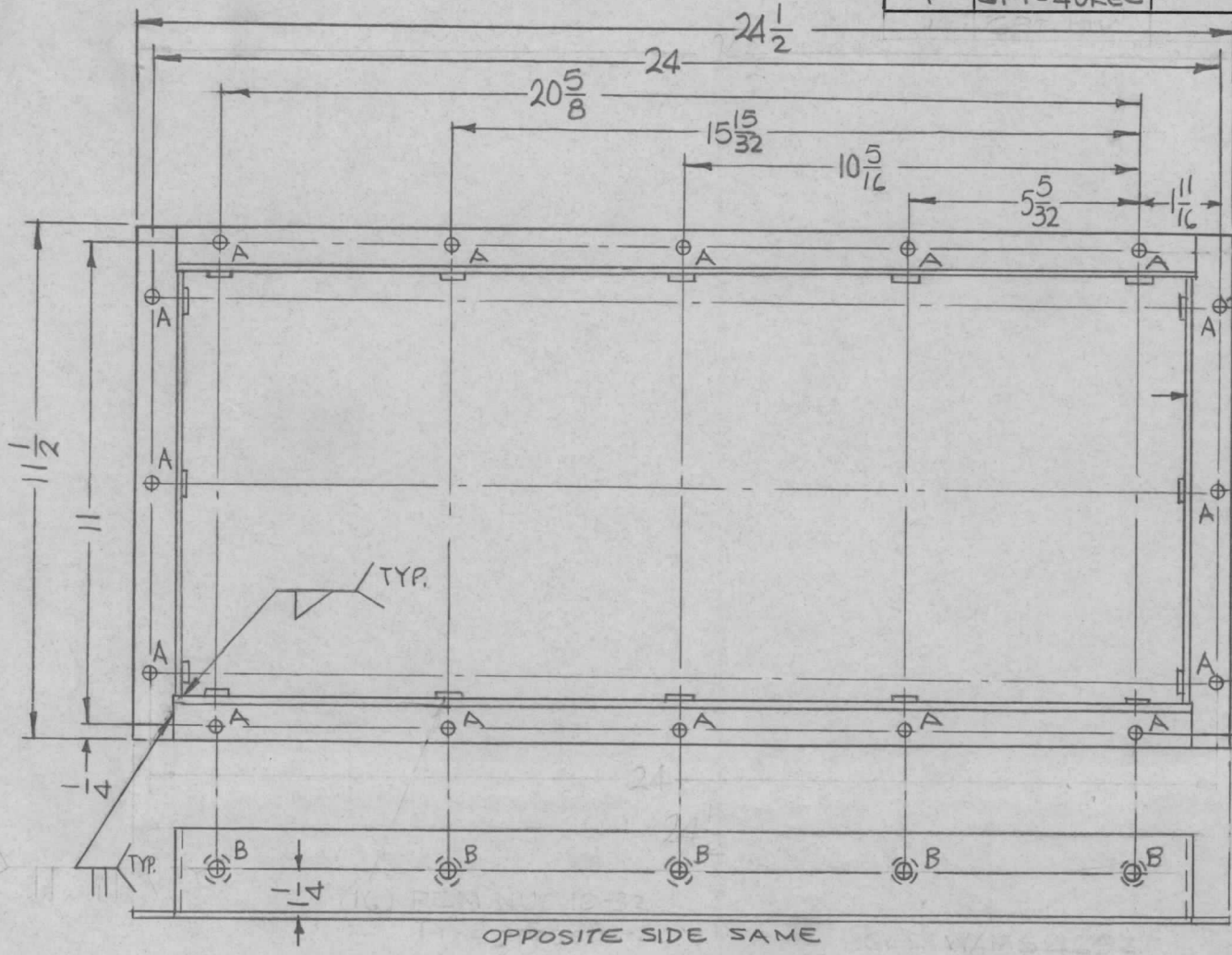
UNLESS OTHERWISE SPECIFIED:

1. USE MATERIAL THICKNESS FOR MAXIMUM RADIUS ON ALL BENDS
2. ALL ANGULAR BENDS 90 DEGREES
3. REMOVE ALL BURRS AND SHARP EDGES

Ø	ORIGINAL RELEASE	2/5/66				
X3	4, 9/64 HOLES DELETED HOLE LEGEND RE ARRANGED	8-13-65	X3			
X2	E HOLE WAS SLOT, D RELOCATED C & 4 TOP A HOLES DROPPED 1/8	8-2-65	X2			
X1	E SLOT ADDED, 2A HOLES DELETED	7-20-65	X1			
SYM	DESCRIPTION	DATE	CH. NO.	DRAFTS	CHECKER	ENG. APP.
UNLESS OTHERWISE SPECIFIED DIMENSIONS ARE IN INCHES AND INCLUDE CHEMICALLY APPLIED OR PLATED FINISHES		SCALE 1/2:1				
DECIMALS .X ± .05 .XX ± .01 .XXX ± .005	TOLERANCES	FRACTIONS ± 1/64 ANGLES ± 0° 30'	CODE A			

12	1	NT 129-632-4	NUT, PLAIN, SPLINE	B
REQ. ITEM		PART NO.	F. BUDETTI DESCRIPTION	SYMBOL
		.064 THICK	THE TECHNICAL MATERIEL CORP. MAMARONECK, NEW YORK	
		STOCK SIZE	SHIELD, MTG. CAPACITORS	
		ALUMINUM		
		MATERIAL		
		5052-H32	DRAWN	CHECKED
		TYPE & TEMPER	HEAT TREAT. SPEC.	FINAL APPROVAL
		S404 YEL IRIDITE		
		FINISH & SPEC. NO.	ELEC. DES. APP.	MECH. DES. APP.
				MS4648 Ø

REQ. PER UNIT	USED ON		MS4650 \emptyset
	MODEL	ASS'Y. NO.	
1	GPT-40KEC		2-21-66



HOLES:
 A-.250 DIA. 16 REQ.
 B-.250-.253 DIA. 16 REQ.

1 MOUNT IN ALL "B" HOLES

OPPOSITE SIDE SAME

- FINISH NOTES:**
1. DEGREASE
 2. S114 - ZINC CHROMATE PRIMER
 3. S520 - BLUE-GRAY TEXTURED VYNIL PAINT.

USED W/MS4652-

REQ. ITEM	16	1	NT129-1032-4	16 GA	STOCK SIZE	STEEL	MATERIAL	NT, PLAIN, SPLINE	B	
F. BUDETTI							DESCRIPTION			SYMBOL
THE TECHNICAL MATERIEL CORP.							MAMARONECK, NEW YORK			
DUCT, EXHAUST ADAPTER										
TYPE & TEMPER		HEAT TREAT. SPEC.		DRAWN		CHECKED		FINAL APPROVAL		
SEE NOTES				<i>[Signature]</i>		<i>[Signature]</i>		<i>[Signature]</i>		
FINISH & SPEC. NO.				ELEC. DES. APP.		MECH. DES. APP.		MS4650 \emptyset		

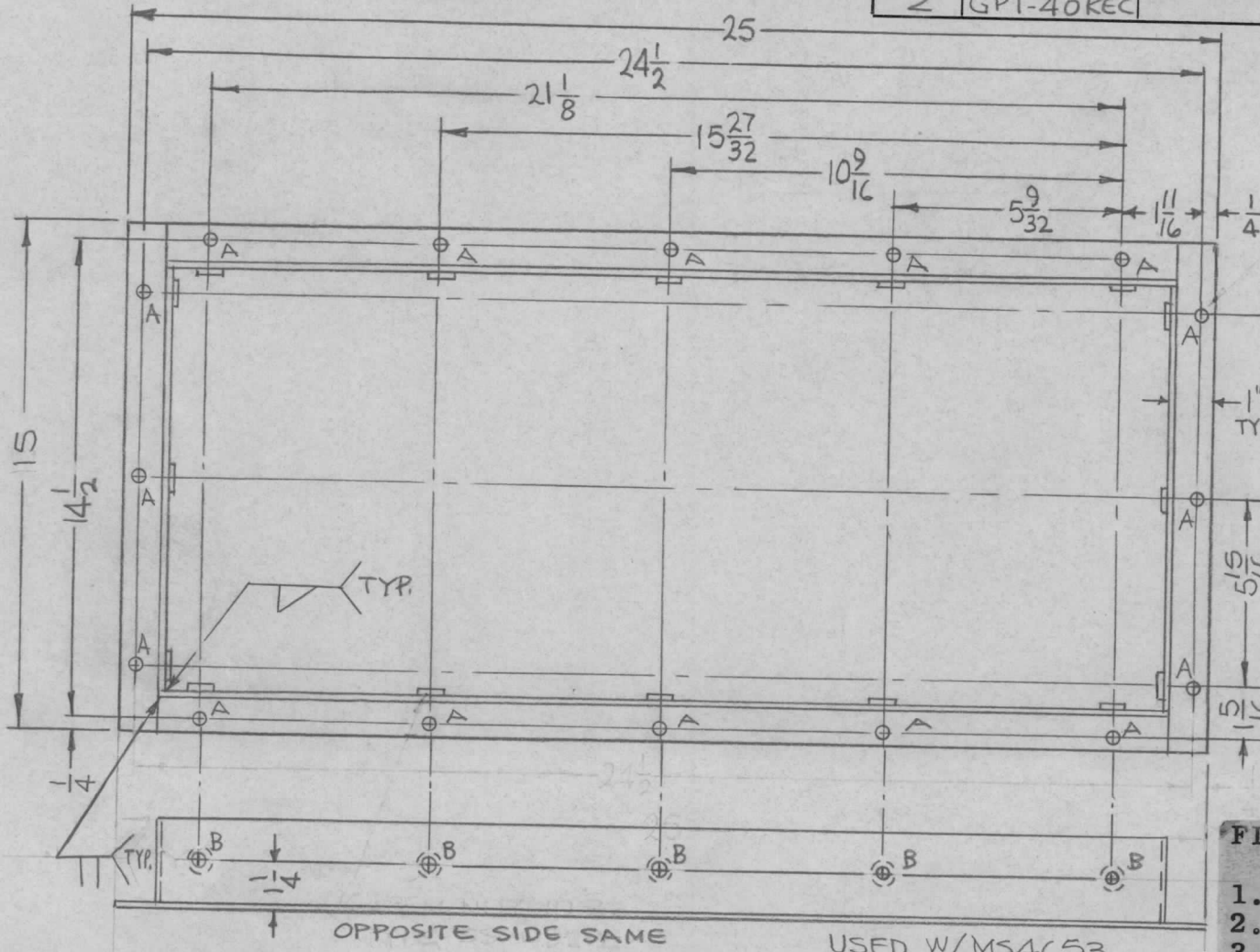
ORIGINAL RELEASE FOR PRODUCTION

31566 \emptyset GDL

SYM	DESCRIPTION	DATE	CH. NO.	DRAFTS	CHECKER	ENG. APP.
UNLESS OTHERWISE SPECIFIED DIMENSIONS ARE IN INCHES AND INCLUDE CHEMICALLY APPLIED OR PLATED FINISHES		SCALE				
DECIMALS .X \pm .05 .XX \pm .01 .XXX \pm .005	TOLERANCES	FRACTIONS \pm 1/64 ANGLES \pm 0° 30'	CODE C			

REQ. PER UNIT	USED ON		
	MODEL	ASS'Y. NO.	DATE
2	GPT-40KEC		2-23-66

MS4651 \emptyset



HOLES:
 A-.250 DIA. 16 REQ.
 B-.250-.253 16 REQ.

① MOUNT IN ALL 'B' HOLES.

OPPOSITE SIDE SAME

FINISH NOTES:

1. DEGREASE
2. S114 - ZINC CHROMATE PRIMER
3. S520 - BLUE-GRAY TEXTURED VYNIL PAINT.

USED W/MS4653

ORIGINAL RELEASE FOR PRODUCTION		3-15-66	\emptyset	GDL			
SYM	DESCRIPTION	DATE	CH. NO.	DRAFTS	CHECKER	ENG. APP.	
UNLESS OTHERWISE SPECIFIED DIMENSIONS ARE IN INCHES AND INCLUDE CHEMICALLY APPLIED OR PLATED FINISHES		SCALE					
DECIMALS .X \pm .05 .XX \pm .01 .XXX \pm .005	TOLERANCES	FRACTIONS \pm 1/64 ANGLES \pm 0° 30'	CODE C				

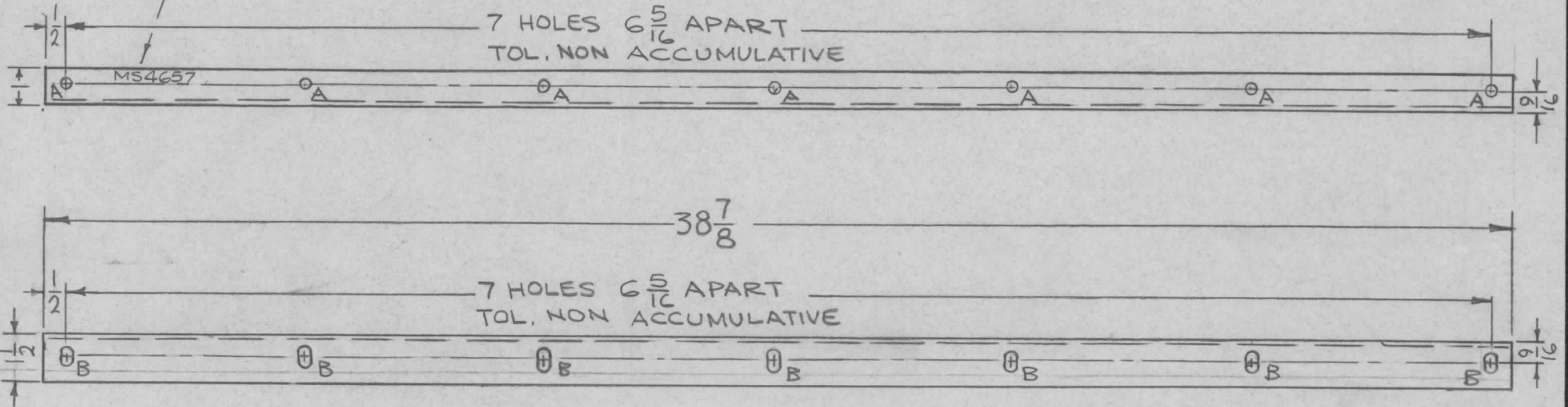
16	1	NT129-1032-4	NUT, PLAIN, SPLINE	B
REQ. ITEM	PART NO.		F. BUDETTI DESCRIPTION	SYMBOL
16 GA.			THE TECHNICAL MATERIEL CORP.	
STEEL			MAMARONECK, NEW YORK	
MATERIAL			DUCT, EXHAUST	
TYPE & TEMPER		HEAT TREAT. SPEC.	DRAWN	CHECKED
SEE NOTES				FINAL APPROVAL
FINISH & SPEC. NO.		ELEC. DES. APP.	MECH. DES. APP.	MS4651 \emptyset

REQ. PER UNIT	USED ON			MS4657 \emptyset
	MODEL	ASS'Y. NO.	DATE	
1	GPT-40KEC		2-21-66	

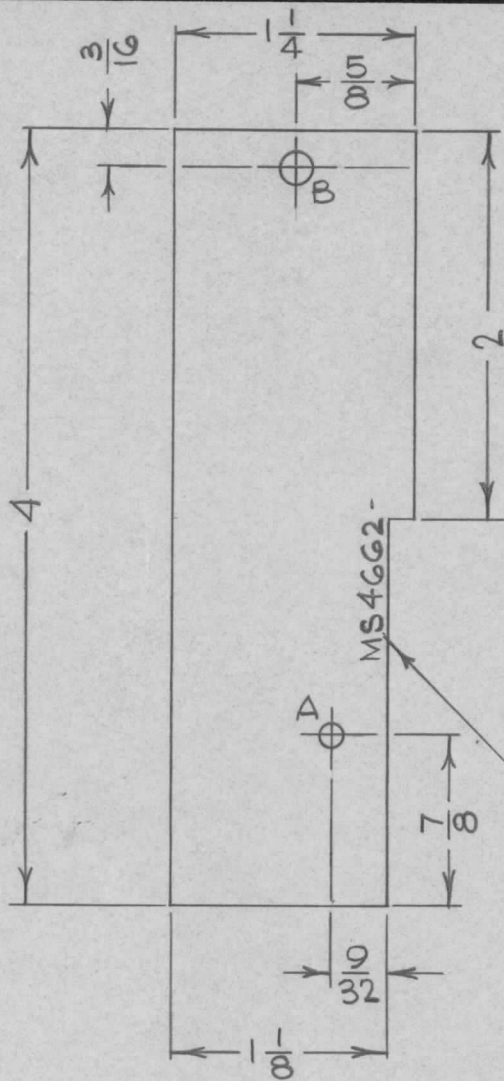
METAL STAMP TMC P/N
 $\frac{1}{8}$ " HIGH GOTHIC W/LATEST
 REV. LETTER.

HOLES!

A - $15/64$ DIA. (7 REQ)
 B - $1/4 \times 1/2$ SLOT (7 REQ)



							REQ. ITEM	PART NO.	F. BUDETTI	DESCRIPTION	SYMBOL	
							16 GAGE		THE TECHNICAL MATERIEL CORP. MAMARONECK, NEW YORK			
							STOCK SIZE		BRACKET, TIE DOWN			
							STEEL					
							MATERIAL					
SYM	DESCRIPTION	DATE	CH. NO.	DRAFTS	CHECKER	ENG. APP.						
UNLESS OTHERWISE SPECIFIED DIMENSIONS ARE IN INCHES AND INCLUDE CHEMICALLY APPLIED OR PLATED FINISHES		SCALE	1/4 : 1									
DECIMALS .X $\pm .05$.XX $\pm .01$.XXX $\pm .005$	TOLERANCES	FRACTIONS $\pm 1/64$ ANGLES $\pm 0^\circ 30'$	CODE A				TYPE & TEMPER	HEAT TREAT. SPEC.	DRAWN	CHECKED	FINAL APPROVAL	
							5520 BLU-GRY TEX. VYNIL P.		<i>[Signature]</i>	<i>[Signature]</i>	<i>[Signature]</i>	
							FINISH & SPEC. NO.	ELEC. DES. APP.	MECH. DES. APP.	MS4657 \emptyset		



REQ. PER UNIT	USED ON			MS4662 ∅
	MODEL	ASS'Y. NO.	DATE	
1	RTTD-1	A3704	6-30-65	

HOLE	DESCRIPTION	REQ.
A	1/8 DIA.	1
B	11/64 DIA.	1

METAL STAMP TMC PART NO. 1/8 HIGH GOTHIC W/LATEST REV. LETTER.

REQ.	ITEM	PART NO.	DESCRIPTION				SYMBOL
		.062 THK	THE TECHNICAL MATERIEL CORP.				
		STOCK SIZE	MAMARONECK, NEW YORK				
		ALUMINUM	COVER, CUTOUT				
		MATERIAL	K4029 - K4031				
		5052-H32	H. AUSTIN	JCF	JES	7/13/65	
		TYPE & TEMPER	DRAWN	CHECKED	FINAL APPROVAL		
		HEAT TREAT. SPEC.					
		YELLOW IRIDITE S404					
		FINISH & SPEC. NO.	ELEC. DES. APP.	MECH. DES. APP.	MS4662 ∅		

ORIGINAL RELEASE FOR PRODUCTION

DATE: 7/13/65
 CH. NO.:
 DRAFTS: Y.V.
 CHECKER:
 ENG. APP.:

UNLESS OTHERWISE SPECIFIED DIMENSIONS ARE IN INCHES AND INCLUDE CHEMICALLY APPLIED OR PLATED FINISHES

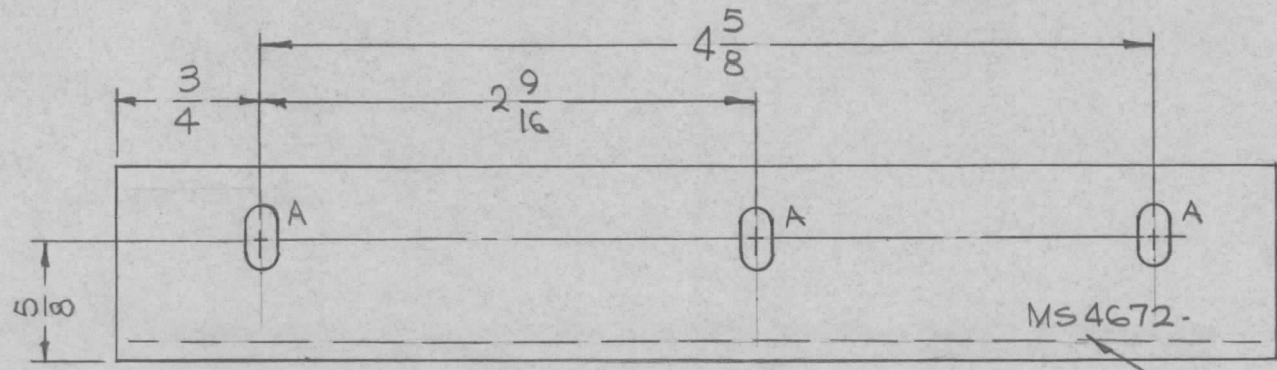
SCALE: 1:1

DECIMALS: .X ± .05, .XX ± .01, .XXX ± .005
 TOLERANCES
 FRACTIONS: ± 1/64, ANGLES: ± 0° 30'

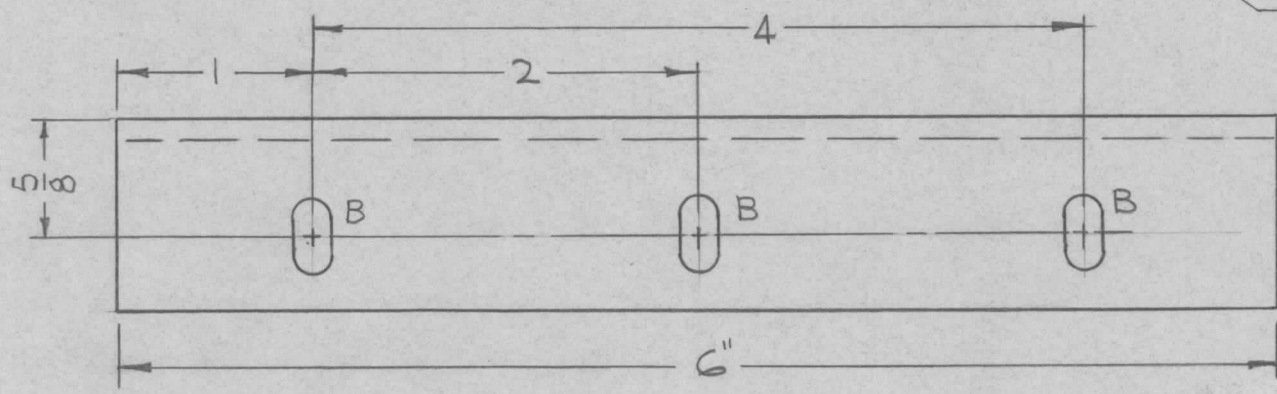
CODE: A

REQ. PER UNIT	USED ON		
	MODEL	ASS'Y. NO.	DATE
1	TST-10K		7-1-65

MS4672 \emptyset



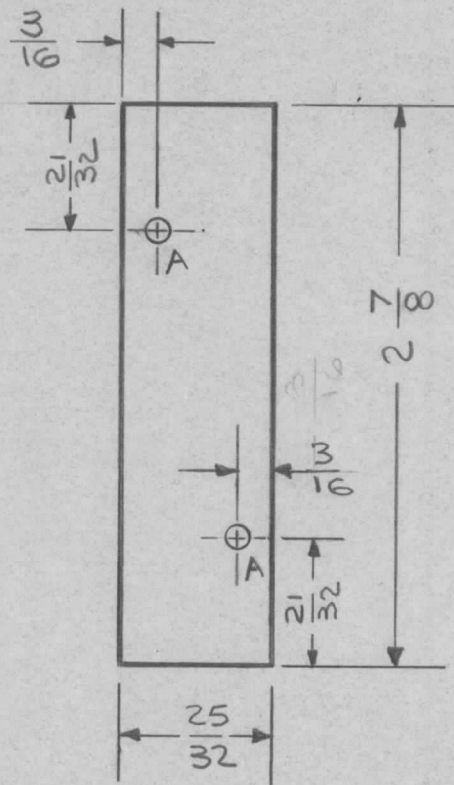
SLOTS:
 A- 5/32 X 5/16 (3REQ.)
 B- 3/16 X 3/8 (3REQ.)



MARK TMC PART NO.
 1/8 HIGH GOTHIC W/LATEST
 REV. LETTER.

SYM	DESCRIPTION	DATE	CH. NO.	DRAFTS	CHECKER	ENG. APP.	REQ. ITEM	PART NO.	F. BUDETTI DESCRIPTION	SYMBOL
							1 X 1 X 1/8 THICK $\&$		THE TECHNICAL MATERIEL CORP. MAMARONECK, NEW YORK	
							STOCK SIZE			
\emptyset	ORIGINAL RELEASE	2/15/66				JHQ	EXTRUDED ALUMINUM		BRACKET, MTG FIXED FILTER	
							MATERIAL			
	UNLESS OTHERWISE SPECIFIED DIMENSIONS ARE IN INCHES AND INCLUDE CHEMICALLY APPLIED OR PLATED FINISHES	SCALE	1:1				5052-H32			
	DECIMALS .X \pm .05 .XX \pm .01 .XXX \pm .005	TOLERANCES	FRACTIONS \pm 1/64 ANGLES \pm 0° 30'	CODE	A		5404 YEL. IRIDITE			MS4672 \emptyset

REQ. PER UNIT	USED ON			MS4676 \emptyset
	MODEL	ASS'Y. NO.	DATE	
	RTRS-2		7-8-65	

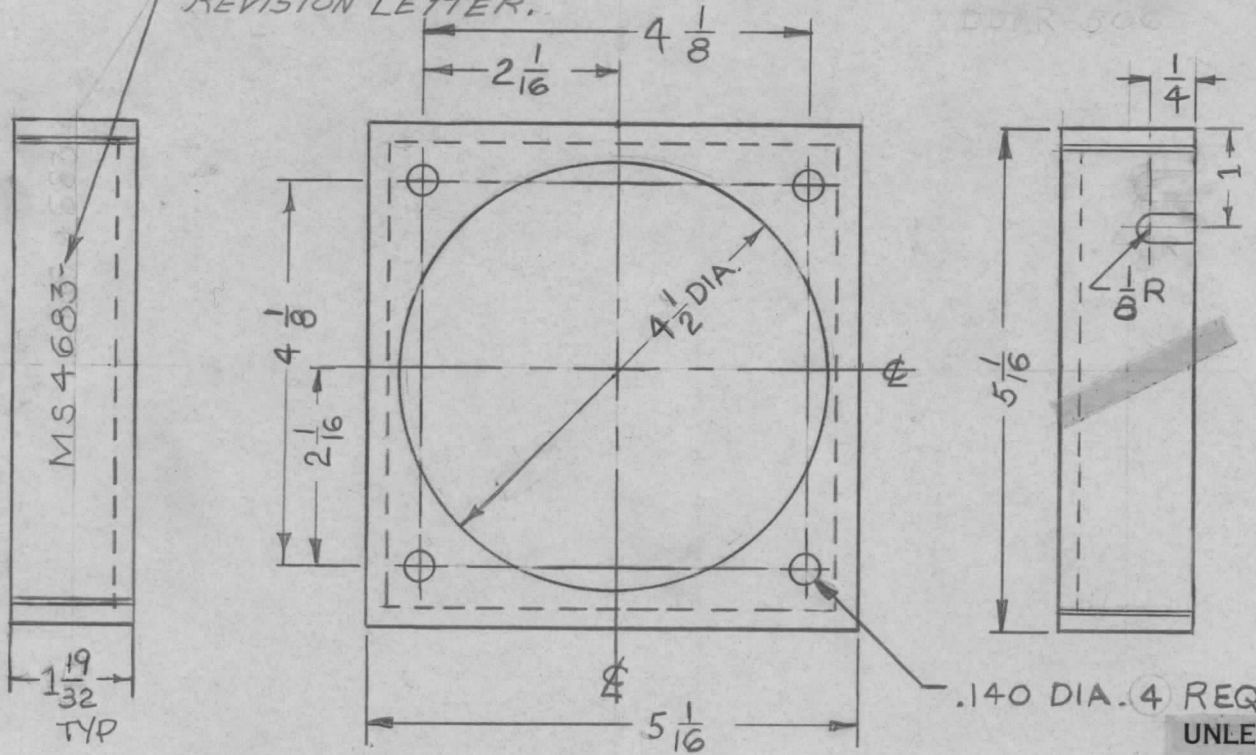


HOLE DIMEN
A - $\frac{1}{8}$ DIA. 2 REQ.

REQ.	ITEM	PART NO.	DESCRIPTION				SYMBOL					
		040 OR .050	THE TECHNICAL MATERIEL CORP.									
		STOCK SIZE	MAMARONECK. NEW YORK									
\emptyset	ORIGINAL RELEASE	1/8/65	\emptyset	D.S.		ALUMINUM	COVER, RELAY CUTOUT					
SYM	DESCRIPTION	DATE	CH. NO.	DRAFTS	CHECKER	ENG. APP.	MATERIAL					
UNLESS OTHERWISE SPECIFIED DIMENSIONS ARE IN INCHES AND INCLUDE CHEMICALLY APPLIED OR PLATED FINISHES		SCALE		FULL				5052 H32				
DECIMALS .X \pm .05 .XX \pm .01 .XXX \pm .005		FRACTIONS \pm 1/64 ANGLES \pm 0° 30'		TOLERANCES		CODE	1	TYPE & TEMPER	HEAT TREAT. SPEC.	DRAWN	CHECKED	FINAL APPROVAL
								S404 YELLOW IRIDITE		W. Jordan 7/8/65		MS4676 \emptyset
								FINISH & SPEC. NO.	ELEC. DES. APP.	MECH. DES. APP.		

REQ. PER UNIT	USED ON			MS4683	Ø
	MODEL	ASS'Y. NO.	DATE		
2	DDRR-506		JULY 15, 65		

METAL STAMP TMC PART No. $\frac{1}{8}$ HIGH
 GOTHIC AS SHOWN WITH LATEST
 REVISION LETTER.

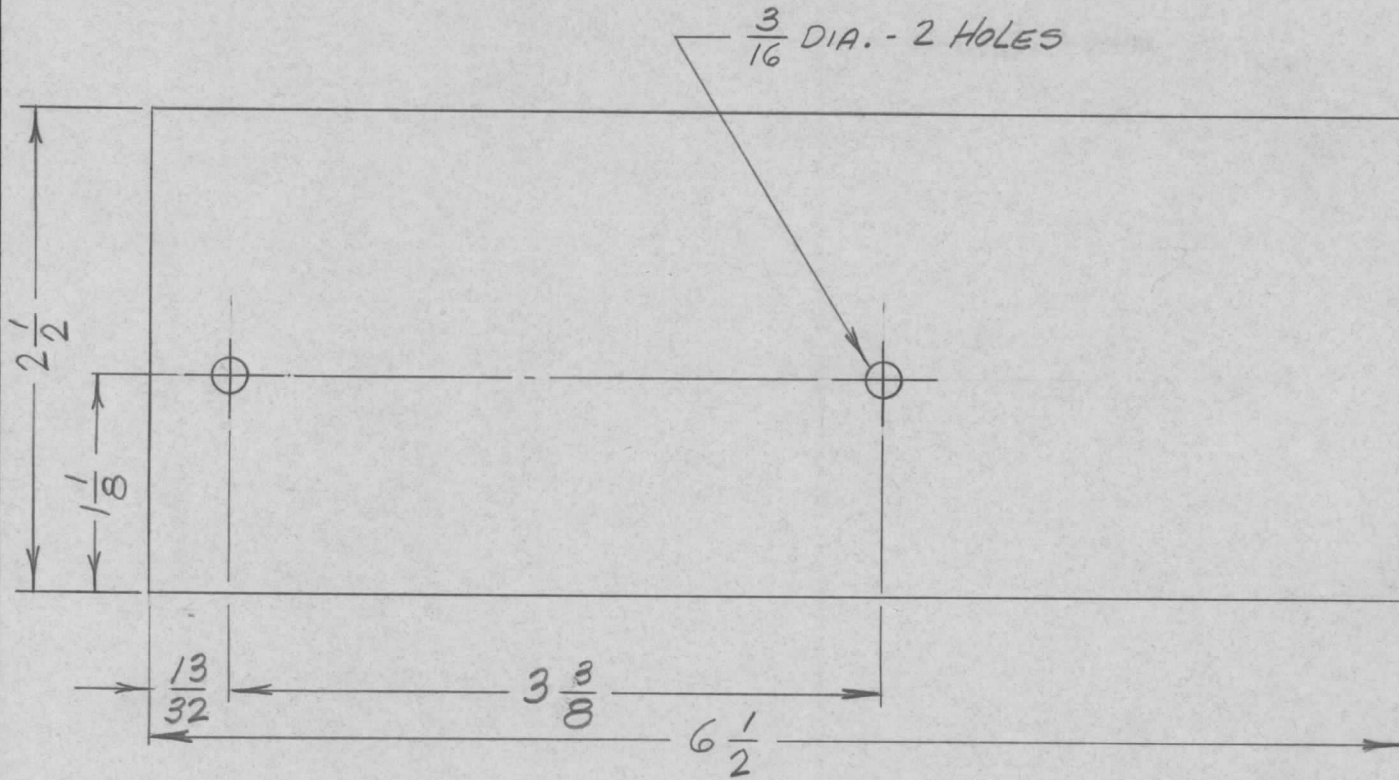


DDRR-506

UNLESS OTHERWISE SPECIFIED:
 1. USE MATERIAL THICKNESS FOR MAXIMUM RADIUS ON ALL BENDS
 2. ALL ANGULAR BENDS 90 DEGREES
 3. REMOVE ALL BURRS AND SHARP EDGES

							REQ. ITEM	PART NO.	STURMER	DESCRIPTION	SYMBOL
								.051		THE TECHNICAL MATERIEL CORP.	
								STOCK SIZE		MAMARONECK.	NEW YORK
Ø	ORIGINAL RELEASE FOR PRODUCTION	8-3-65	#	E				ALUMINUM		CHASSIS, BLOWER MTG.	
SYM	DESCRIPTION	DATE	CH. NO.	DRAFTS	CHECKER	ENG. APP.		MATERIAL			
	UNLESS OTHERWISE SPECIFIED DIMENSIONS ARE IN INCHES AND INCLUDE CHEMICALLY APPLIED OR PLATED FINISHES	SCALE	1:2					5052 H32	D.VENEZIAN	JCB	8/3/65
DECIMALS	TOLERANCES	FRACTIONS	CODE				TYPE & TEMPER	HEAT TREAT. SPEC.	DRAWN	CHECKED	FINAL APPROVAL
.X ± .05		± 1/64					S404 YELLOW IRIDITE	7-16-65			MS4683 Ø
.XX ± .01		ANGLES					FINISH & SPEC. NO.	ELEC. DES. APP.	MECH. DES. APP.		
.XXX ± .005		± 0° 30'									

REQ. PER UNIT	USED ON			MS4685 ∅
	MODEL	ASS'Y. NO.	DATE	
1	A3860		7-14-65	

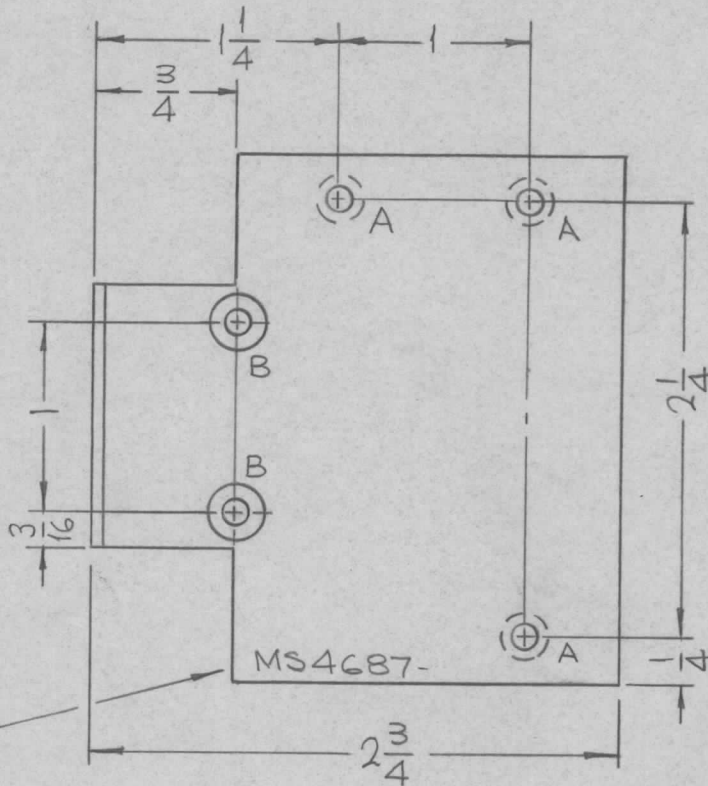
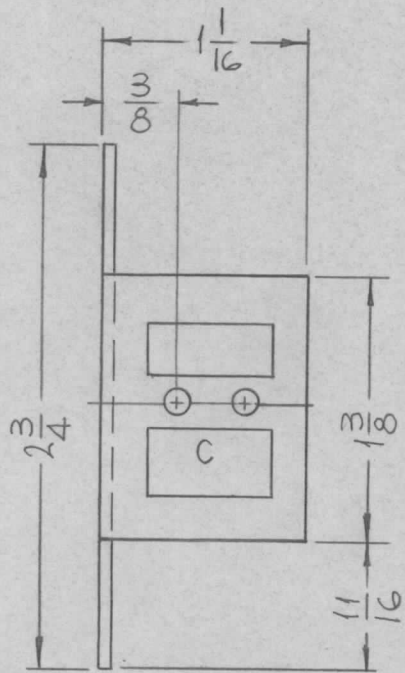


METAL STAMP TMC
PART NO. W/LATEST
REVISION LETTER
ON REAR.

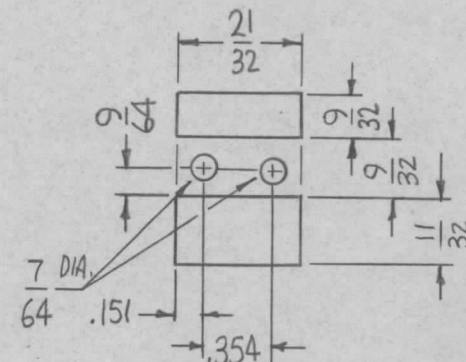
NOTE: USED TO MODIFY MS3804.

REQ.	ITEM	PART NO.	EATON	DESCRIPTION	SYMBOL	
		.064 THK.	THE TECHNICAL MATERIEL CORP. MAMARONECK, NEW YORK			
		STOCK SIZE	PLATE, CHASSIS, COVER			
∅	ORIGINAL RELEASE FOR PRODUCTION	ALUMINUM				
SYM	DESCRIPTION	DATE	CH. NO.	DRAFTS	CHECKER	ENG. APP.
	UNLESS OTHERWISE SPECIFIED DIMENSIONS ARE IN INCHES AND INCLUDE CHEMICALLY APPLIED OR PLATED FINISHES	SCALE				
		1:1				
DECIMALS	TOLERANCES	FRACTIONS	CODE			
.X ± .05		± 1/64	A			
.XX ± .01		ANGLES				
.XXX ± .005		± 0° 30'				
		5052 H32	H.AUSTIN	JCB	J.C. Eaton	7/29/65
		TYPE & TEMPER	DRAWN	CHECKED	FINAL APPROVAL	
		S404 YEL. IRIDITE	K.E.	J.C.	MS4685 ∅	
		FINISH & SPEC. NO.	ELEC. DES. APP.	MECH. DES. APP.		

REQ. PER UNIT	USED ON			MS4687 \emptyset
	MODEL	ASS'Y. NO.	DATE	
1	TST-10K		7-22-65	



HOLES	DESCRIPTION	REQ.
A	DR. .120 C'SINK 82° TO .230 DIA.	3
B	DR. .144 C'SINK 82° TO .284 DIA.	2
C	SEE DETAIL	1



C-DETAIL

- UNLESS OTHERWISE SPECIFIED:
1. USE MATERIAL THICKNESS FOR MAXIMUM RADIUS ON ALL BENDS
 2. ALL ANGULAR BENDS 90 DEGREES
 3. REMOVE ALL BURRS AND SHARP EDGES

MARK
TMC PART NO.
1/8 HIGH GOTHIC
W/LATEST REV.
LETTER.

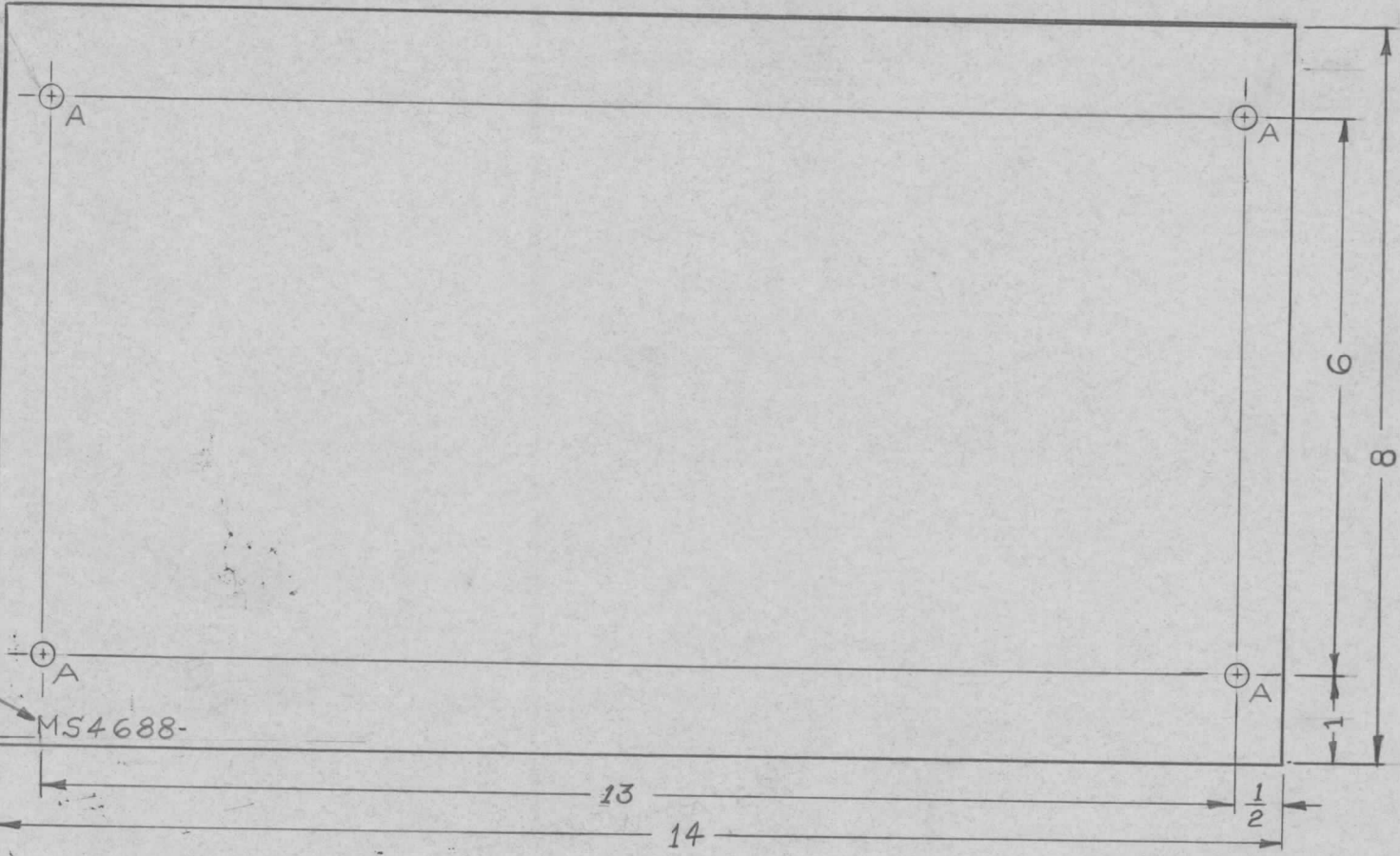
REF: LD1973-

SYM	DESCRIPTION	DATE	CH. NO.	DRAFTS	CHECKER	ENG. APP.	REQ. ITEM	PART NO.	F. BUDETTI DESCRIPTION	SYMBOL	
\emptyset	ORIGINAL RELEASE	2/15/66					.064 THICK		THE TECHNICAL MATERIEL CORP. MAMARONECK, NEW YORK	BRACKET, MTG. COMPONENTS	
							STOCK SIZE				
							ALUMINUM				
							MATERIAL				
							5052-H32				
							TYPE & TEMPER	HEAT TREAT. SPEC.	DRAWN	CHECKED	FINAL APPROVAL
							S404 YEL. IRIDITE				
							FINISH & SPEC. NO.		ELEC. DES. APP.	MECH. DES. APP.	MS4687 \emptyset

HOLES
"A" 1/4 DIA.

REQ.
4

REQ. PER UNIT	USED ON			MS 4688 ϕ
	MODEL	ASS'Y. NO.	DATE	
5	DDRR-506		8-6-65	



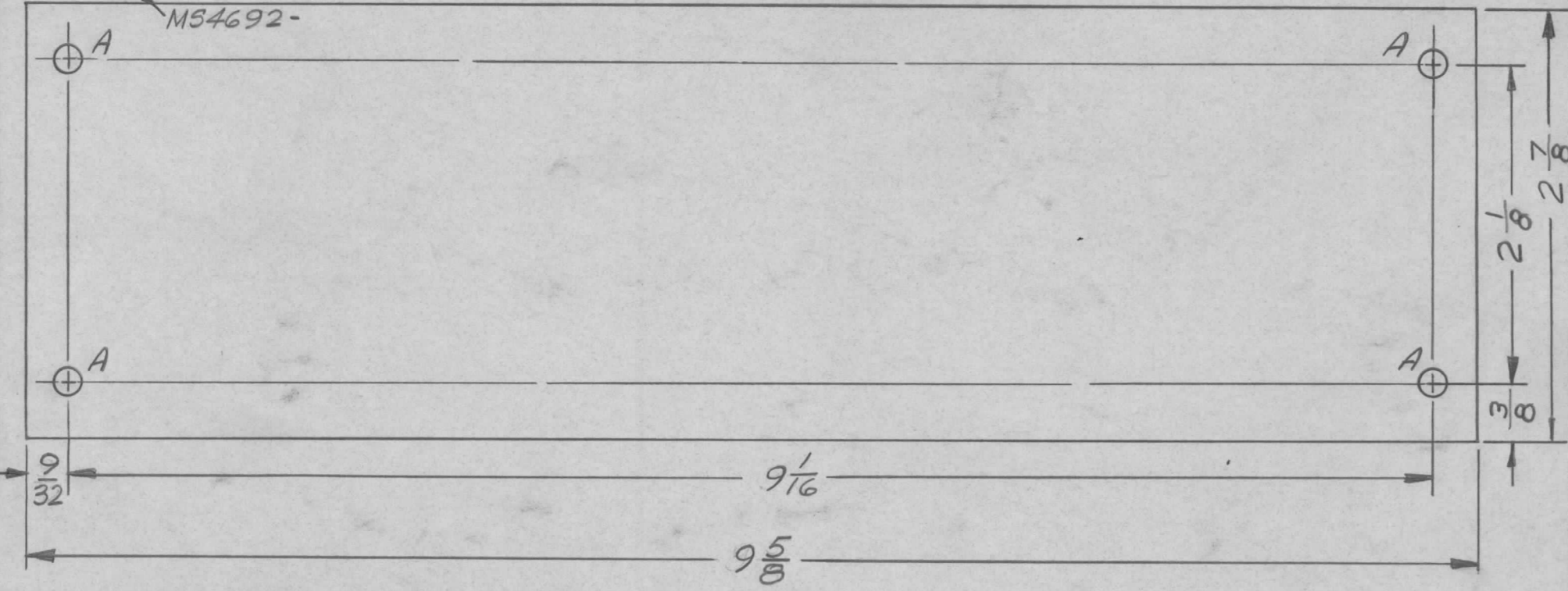
METAL STAMP
TMC P/N 1/8"
GOTHIC WITH
LATEST REVISION
LETTER

				REQ. ITEM	PART NO.	STURMER DESCRIPTION	SYMBOL			
				.064		THE TECHNICAL MATERIEL CORP. MAMARONECK, NEW YORK	ϕ			
				STOCK SIZE						
				ALUMINUM		COVER, VENT				
				MATERIAL						
UNLESS OTHERWISE SPECIFIED DIMENSIONS ARE IN INCHES AND INCLUDE CHEMICALLY APPLIED OR PLATED FINISHES				SCALE DO NOT SCALE		5052-H32	D.VENEZIAN			
TOLERANCES				CODE		TYPE & TEMPER	HEAT TREAT. SPEC.	DRAWN	CHECKED	FINAL APPROVAL
.X \pm .05 .XX \pm .01 .XXX \pm .005				FRACTIONS \pm 1/64 ANGLES \pm 0° 30'		SAOA IRIDITE/4-2 AL COAT			8865	MS 4688 ϕ
						FINISH & SPEC. NO.	ELEC. DES. APP.	MECH. DES. APP.		

REQ. PER UNIT	USED ON		
	MODEL	ASS'Y. NO.	DATE
1	RARB-1	A5192	1 Aug 65
1	RASB-1	A5131	1 Aug 65

MS4692 \emptyset

METAL STAMP TMC PART NO. 1/8 HIGH GOTHIC.
W/LATEST REV. LETTER



HOLE	DESCRIPTION	REQ.
A	11/64 DIA.	4

REF: LD 1990

REQ.	ITEM	PART NO.	LANGER	DESCRIPTION	SYMBOL	
	.064			THE TECHNICAL MATERIEL CORP. MAMARONECK, NEW YORK		
				PLATE, COVER		
\emptyset	ORIGINAL RELEASE	10/26/65	\emptyset			
SYM	DESCRIPTION	DATE	CH. NO.	DRAFTS	CHECKER	ENG. APP.
UNLESS OTHERWISE SPECIFIED DIMENSIONS ARE IN INCHES AND INCLUDE CHEMICALLY APPLIED OR PLATED FINISHES		SCALE	1:1			
DECIMALS .X \pm .05 .XX \pm .01 .XXX \pm .005	TOLERANCES	FRACTIONS \pm 1/64 ANGLES \pm 0° 30'	CODE A			
				5052-H32		BMM
				5404 YEL. IRIDITE		JCP
						AP/Key 10/24/65
						MS4692 \emptyset