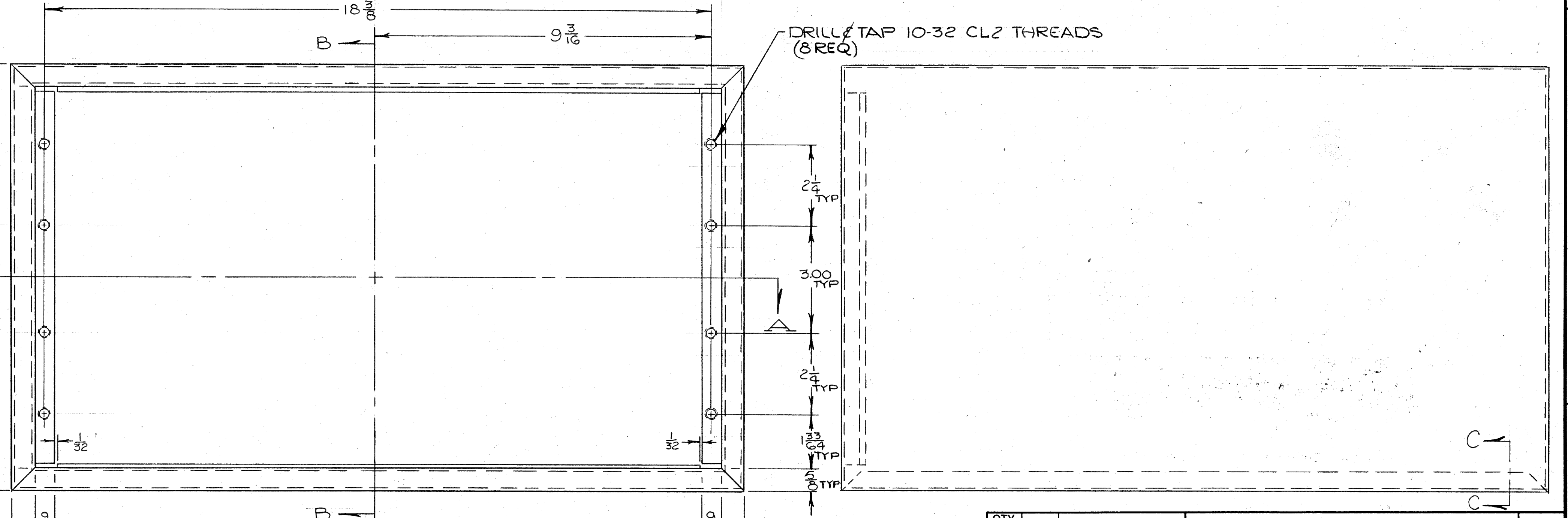
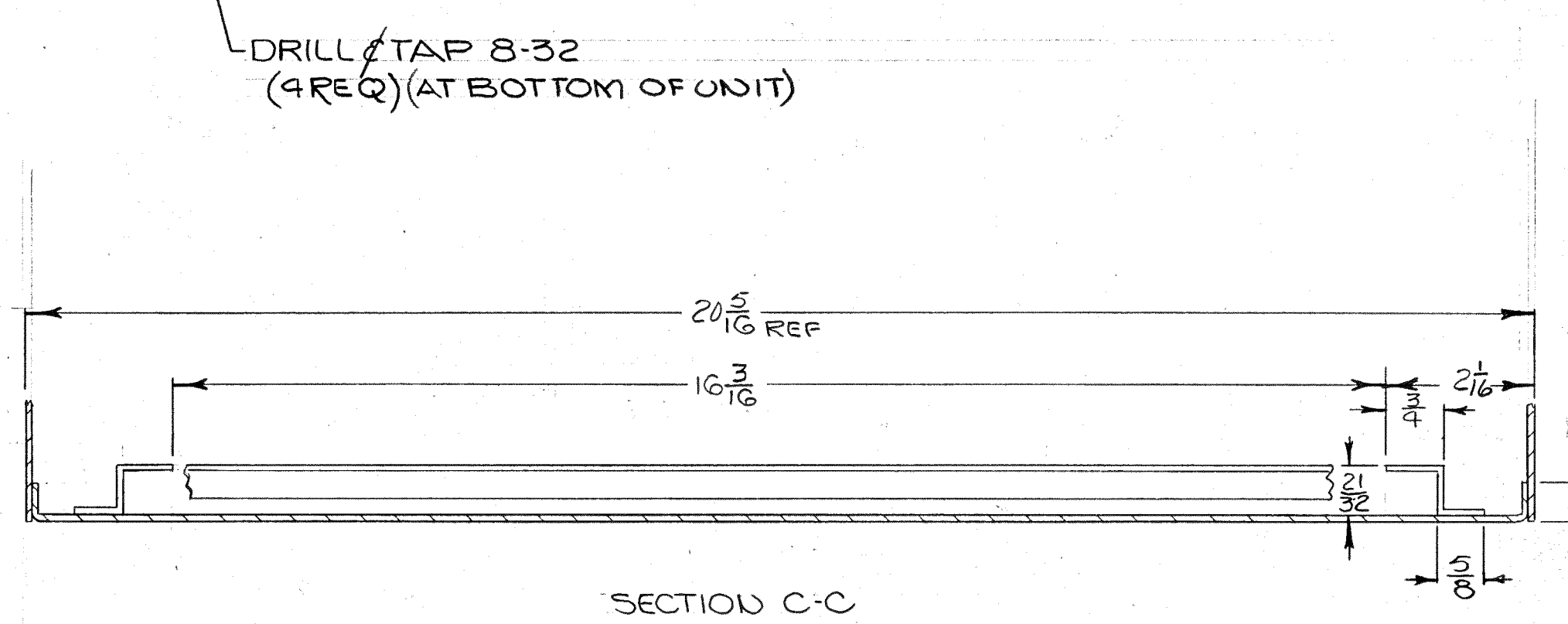
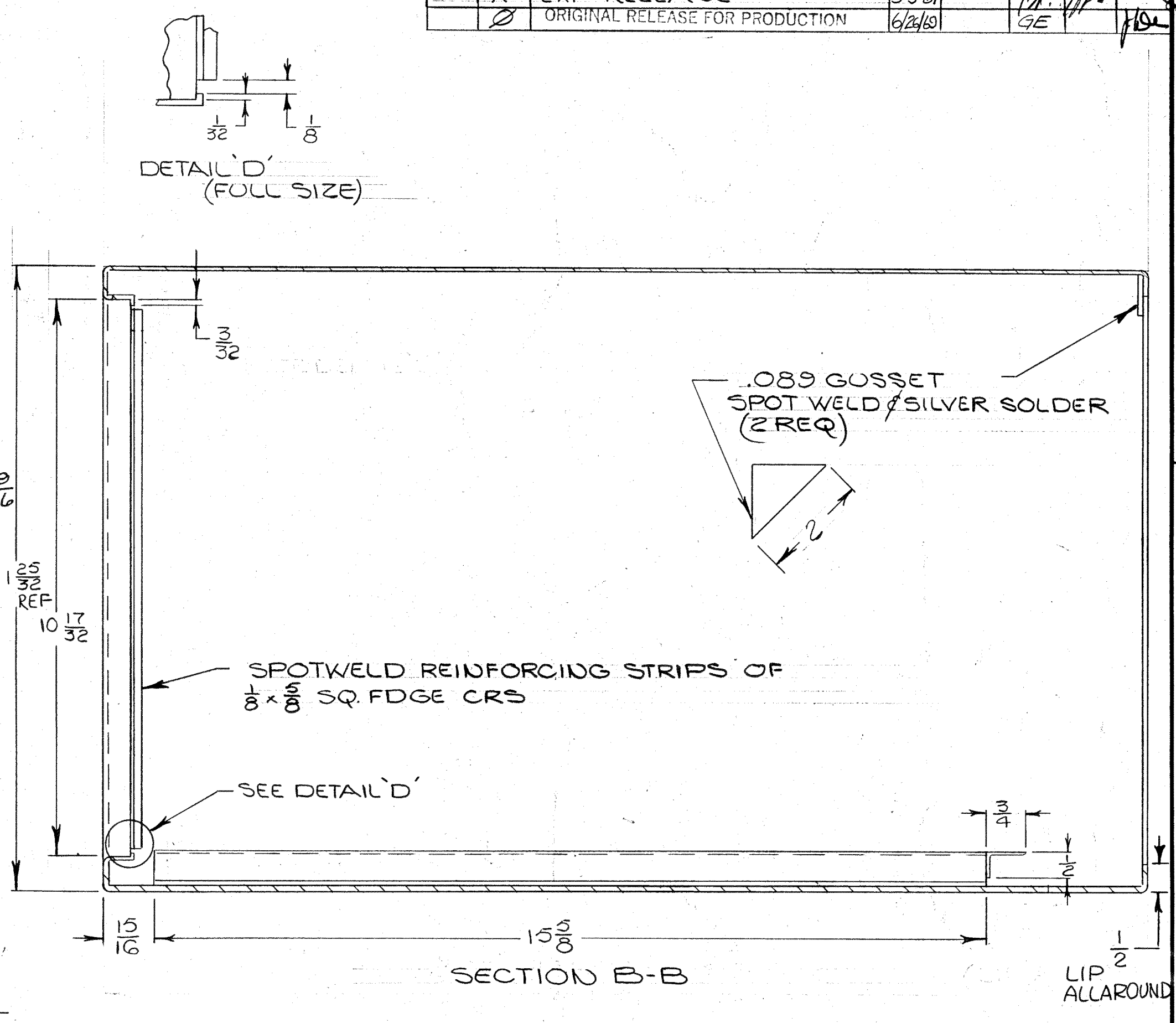
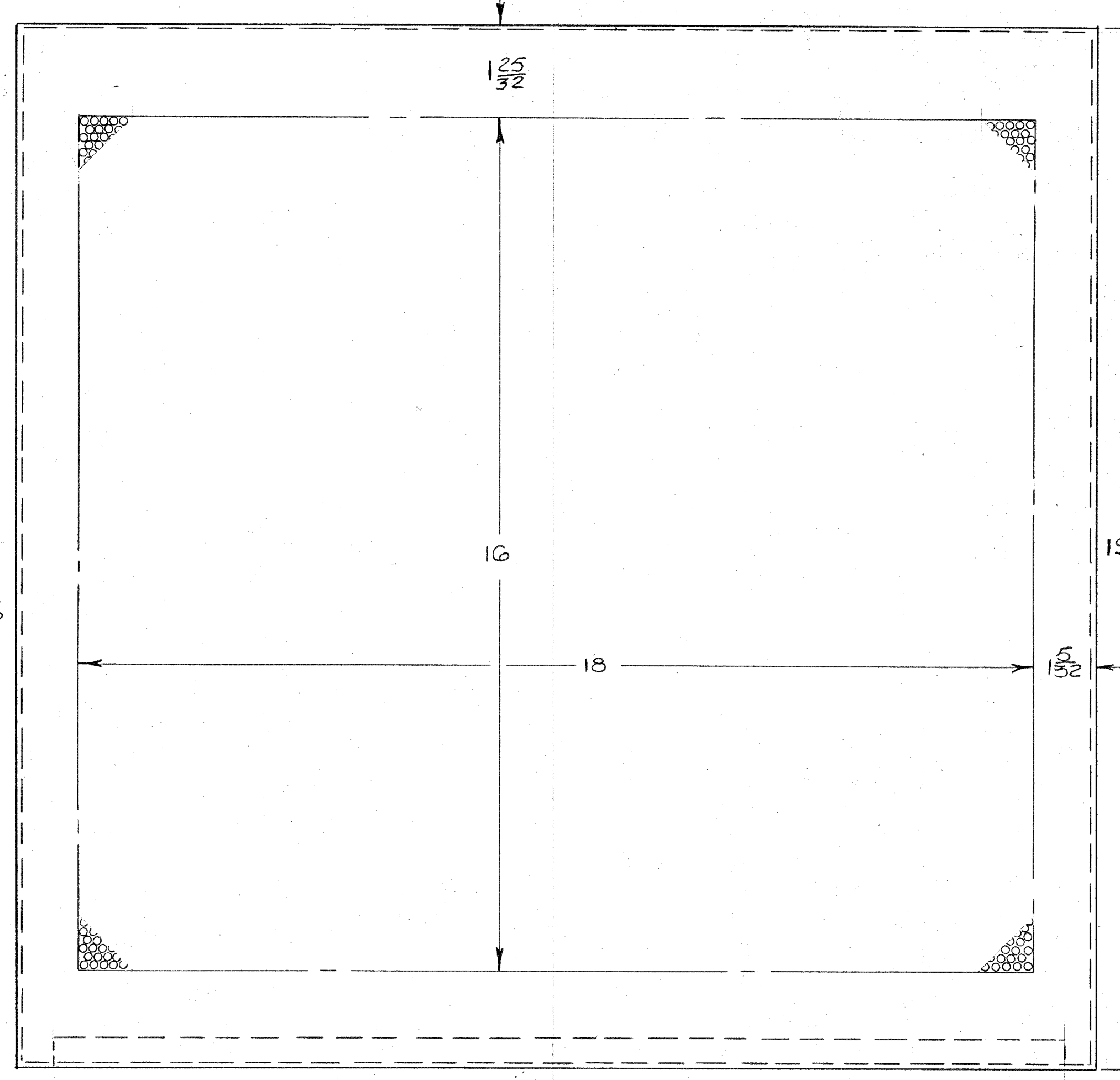
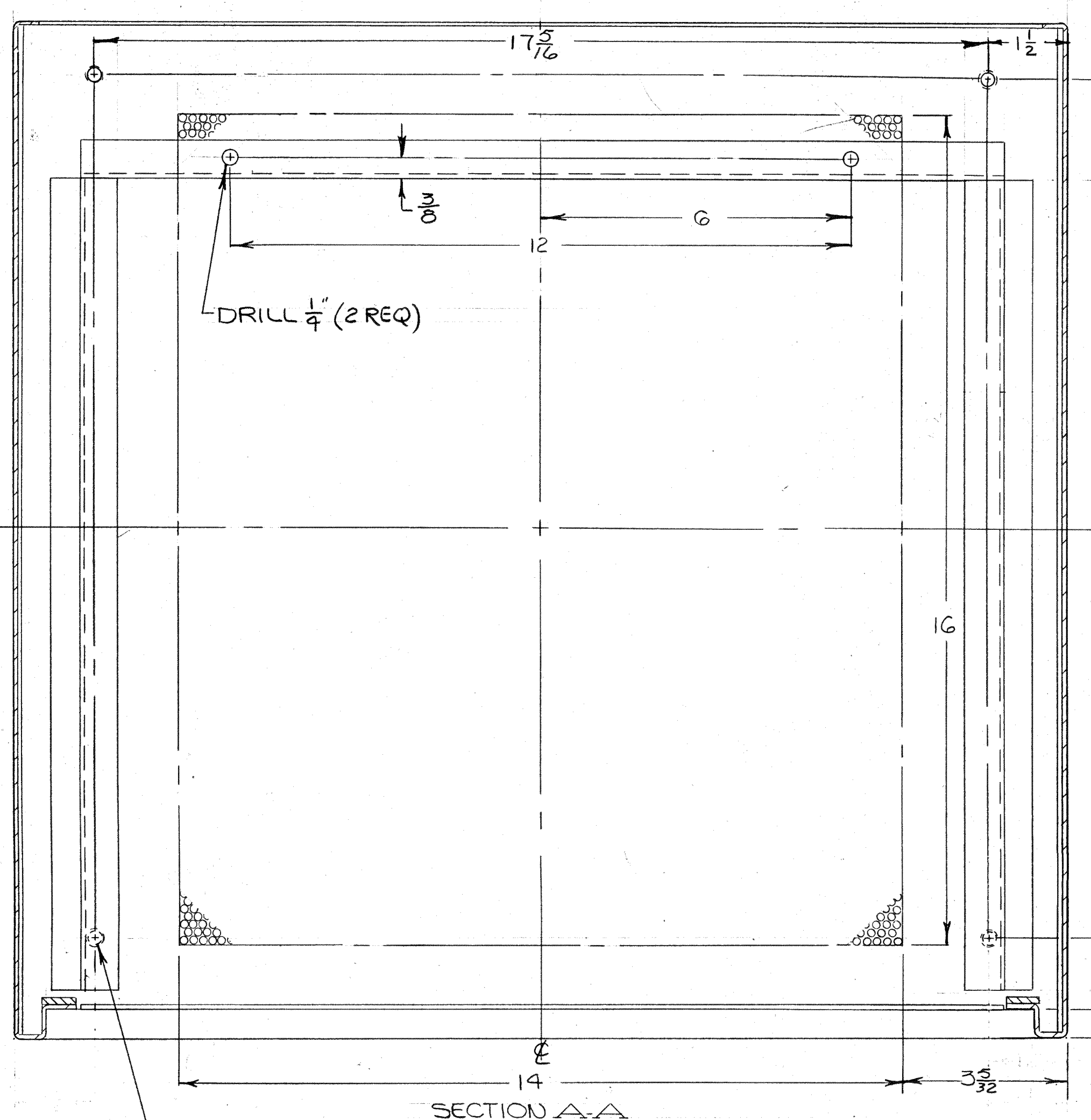


REVISIONS						
ZONE	LTR	DESCRIPTION	DATE	E.M.N.NO	DRAFT	CHKD APPD
	X	EXP RELEASE	9-5-67			
	Ø	ORIGINAL RELEASE FOR PRODUCTION	6/2/68			



MATERIAL:
STEEL, MILD COLD ROLLED .047 (18 GA)
METAL TO BE FREE OF ALL SURFACE IMPERFECTIONS

FINISH:
S-371 DEGREASING FOR STEEL } OR PRIME / PAINT AS
S-114 ZINC CHROMATE PRIMER } PER CUSTOMER'S SPECS.
S-520 BLUE GRAY TEXTURED VINYL }

MANUFACTURING PROCESS:
FRONT OPENING SHOULD BE WITHIN ±.04
SQUARE OF CABINET SHOULD BE WITHIN 0.5°
AS MANY SPOTWELDS AS PRACTICAL FOR
MAXIMUM DEPENDABILITY / STRENGTH
PERFORMANCES, 1/8 DIA ON 1/2 CENTERS STAGGERED
WELD & GRIND SMOOTH ALL CORNERS

1	TTR 20 ()	CAB-9A
1	TTR 10 ()	CAB-9A
QTY / UNIT	MODEL USED ON	ASSY NO.
APPLICATION		
	CODE A	S401-451
NOTICE TO PERSONS RECEIVING THIS DRAWING		
THE TECHNICAL MATERIEL CORPORATION claims proprietary right in the material disclosed herein. This drawing is issued in confidence for engineering information only and may not be reproduced or used to manufacture anything shown hereon without permission from THE TECHNICAL MATERIEL CORPORATION to the user. This drawing is loaned for mutual assistance and is subject to recall at any time.		

UNLESS OTHERWISE SPECIFIED DIMENSIONS ARE IN INCHES AND INCLUDE CHEMICALLY APPLIED OR PLATED FINISHES	
TOLERANCES ON	
DECIMALS	FRACTIONS
.X ± .05	± 1/64
.XX ± .01	ANGLES
.XXX ± .005	± 0° .30'
MATERIAL	AS NOTED
FINISH	AS NOTED

QTY REQ.	ITEM	PART NO.	DESCRIPTION	SYMBOL
	K. HOLT		LIST OF MATERIAL	
	FINAL APPROVAL	DATE	THE TECHNICAL MATERIEL CORP.	
	MECH. DES.	DATE	MAMARONECK, NEW YORK	
	ELECT. DES.	DATE	CABINET,	
	CHECKED	DATE		
	DRAWN	DATE		
		9-5-67		
SIZE	CODE IDENT. NO.	DWG NO.	ISSUE	
D	82679	MS 5197	Ø	
SCALE	M/L	SHEET	OF	