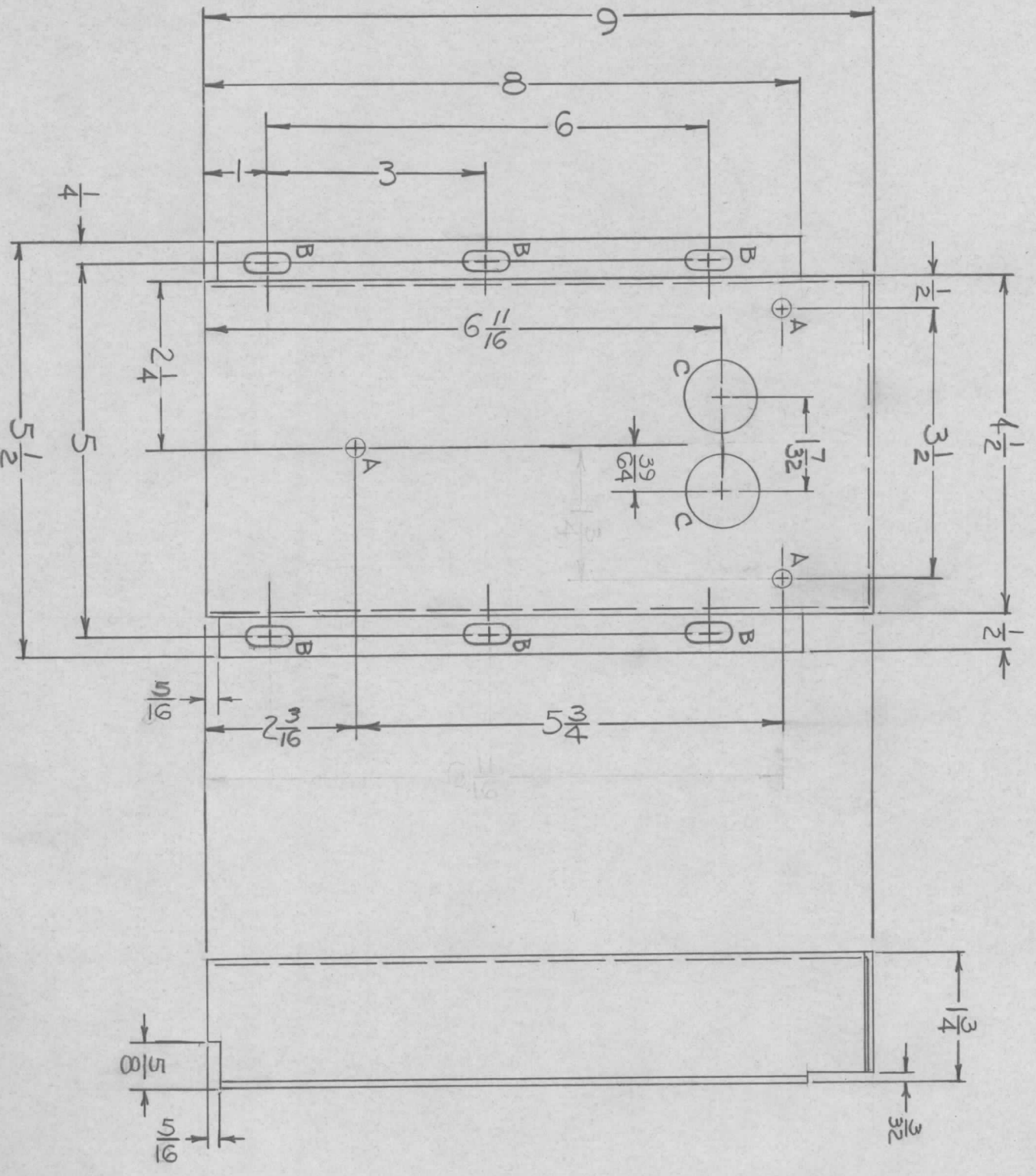


REVISIONS							
ZONE	LTR	DESCRIPTION	DATE	E.M.N. NO	DRAFT	CHKD	APPD
Ø		ORIGINAL RELEASE	10/2/70			Ø	

HOLE	DESCRIPTION	REQ.
A	11/64 DIA.	3
B	11/64 X 11/32 SLOT	6
C	1/8 DIA.	2



QTY / UNIT	1	MODEL USED ON	PALAIOK	ASS'Y NO.	AX5084
APPLICATION					
CODE					

NOTICE TO PERSONS RECEIVING THIS DRAWING  
 THE TECHNICAL MATERIEL CORPORATION claims proprietary right in the material disclosed hereon. This drawing is issued in confidence for engineering information only and may not be reproduced or used to manufacture anything shown hereon without permission from THE TECHNICAL MATERIEL CORPORATION to the user. This drawing is loaned for mutual assistance and is subject to recall at any time.

DECIMALS	FRACTIONS
.X ± .05	1/64
.XX ± .01	TOLS.
.XXX ± .005	ANGLES 0°-30'
MATERIAL .064	
5052 H32 ALUM.	
FINISH S404	
YEL. IRIDITE	

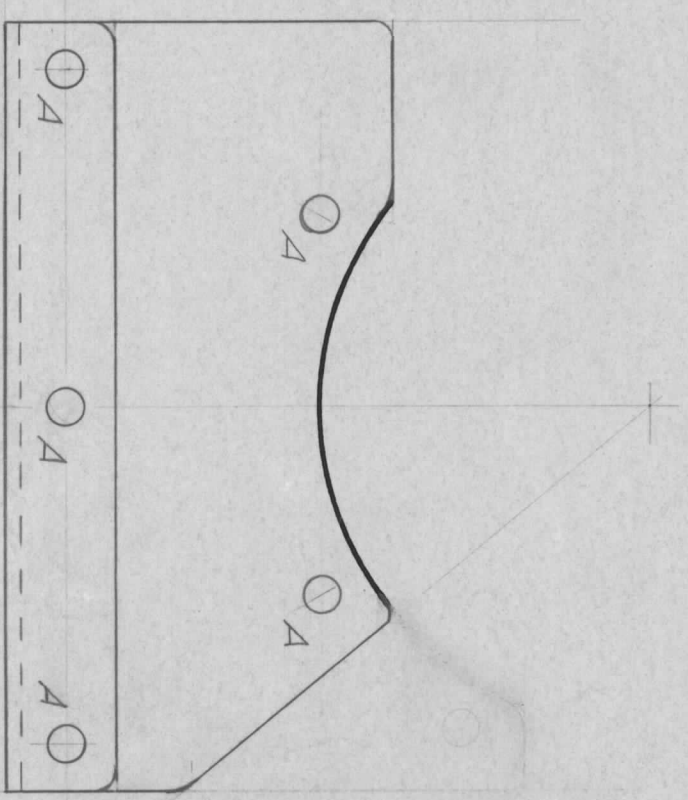
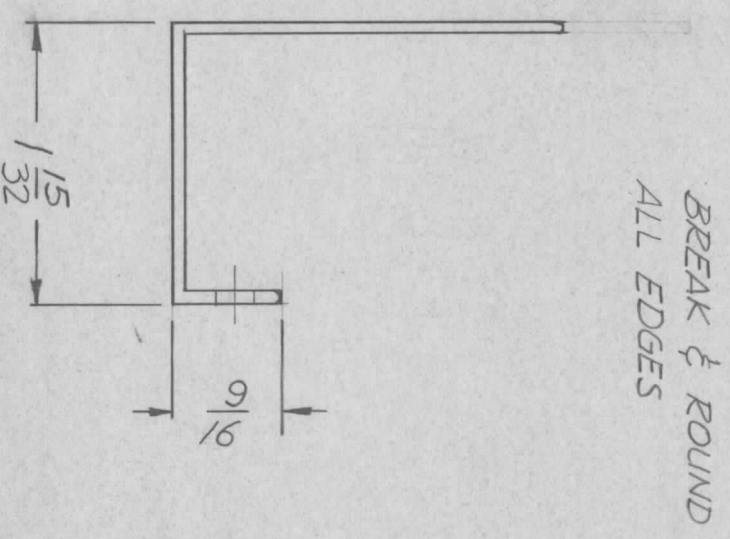
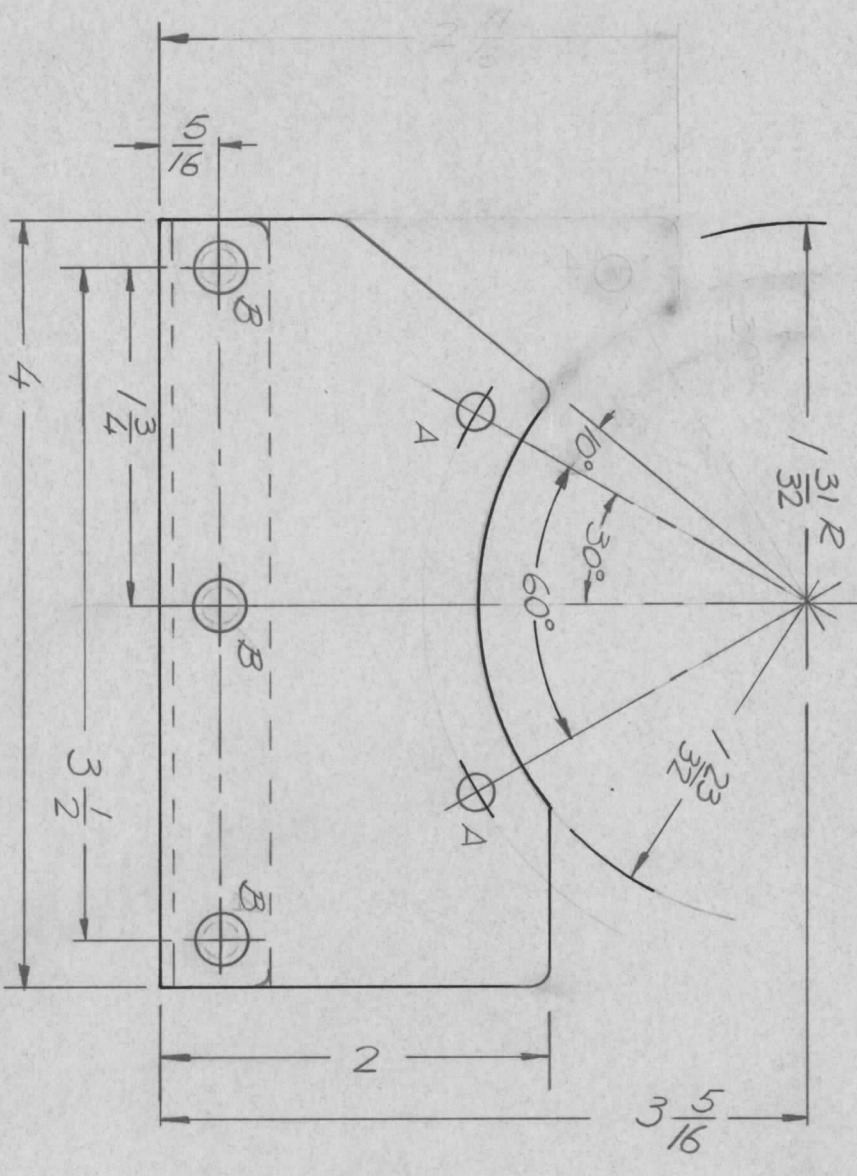
REQ'D ITEM	PART NUMBER	DESCRIPTION	SYM.
F. BUDETTI		LIST OF MATERIAL	

FINAL APPROVAL	DATE	1-10
MECH. DES. ALP.	DATE	1-70
ELECT. DES. AEC	DATE	1-70
CHECKED	DATE	
DRAWN ALP.	DATE	10-69

THE TECHNICAL MATERIEL CORP.	MAMARONECK, NEW YORK		
COVER, BD, SENSE			
SIZE	CODE IDENT. NO.	DWG NO.	ISSUE
B	82679	MS5607	Ø
SCALE		SHEET	OF

NO LONGER REQUIRED

REVISIONS						
ZONE	LTR	DESCRIPTION	DATE	E.M.N.NO	DRAFT	CHKD
X		EXP RELEASE	9-11-69		GE	AK
X		ADD. 10° CUTOFF	11-20-69		GE	
Ø		ORIGINAL RELEASE	1/4/70		Ø	
A		NOTE "NO LONGER READ" ADD	3-7-74	21143	GD	A



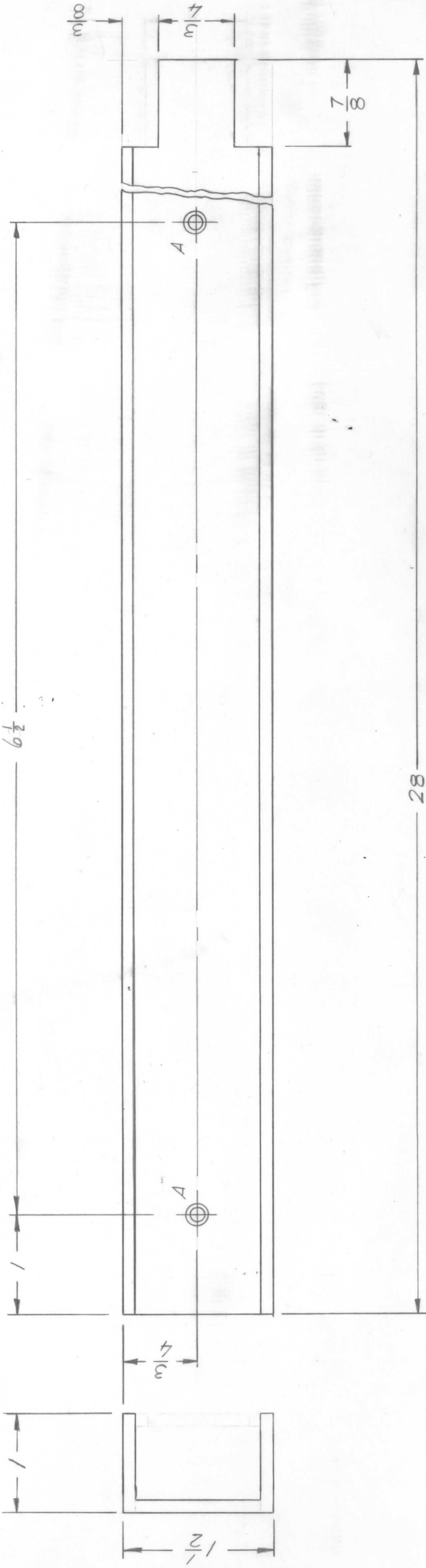
A HOLES 1/4 DIA.  
B HOLES 1/4 DIA.

QTY / UNIT	MODEL USED ON	ASS'Y NO.
1	PALA-10K	A# 146
APPLICATION		
CODE		

DECIMALS	FRACTIONS
.X ± .05	1/64
.XX ± .01	ANGLES 0° - 30'
.XXX ± .005	

UNLESS OTHERWISE SPECIFIED DIMENSIONS ARE IN INCHES AND INCLUDE CHEMICALLY APPLIED OR PLATED FINISHES
FINISH S404 YEL. IRIDITE
MATERIAL .063 ALUM 5052 H32

REQ'D ITEM	PART NUMBER	DESCRIPTION	SYM.
	F. BUDETTI	LIST OF MATERIAL	
FINAL APPROVED	DATE	THE TECHNICAL MATERIEL CORP.	
MECH. DES. ALP	12-70	MAMARONECK, NEW YORK	
ELECT. DES.	DATE	GROUNDING BRACKET	
CHECKED AK	11/2/69	IPB BAND SWITCH	
DRAWN G. EVANGELIST	3-11-69	SIZE B	CODE IDENT. NO. 82679
		SCALE	DWG. NO. MS 5609
			ISSUE A



A HOLES - DRILL .196 DIA.  
 C'S SINK 82° TO .390 DIA.

REVISIONS			
ZONE	LTR	DESCRIPTION	DATE
	X	EXP RELEASE	9-18-69
	Ø	ORIGINAL RELEASE	1/4/70
	A	6 1/2 WAS 10	7/19/72

E.M.N.NO	DRAFT	CHKD	APPD
20805	EK	ES	ES

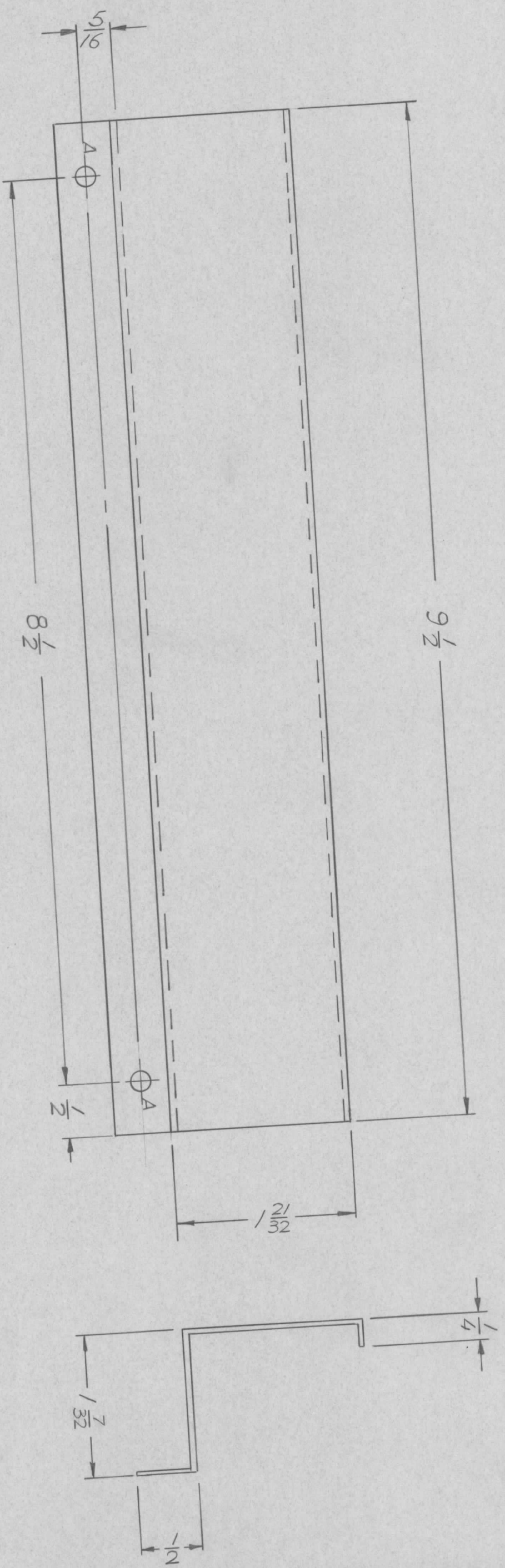
REQ'D	ITEM	PART NUMBER	DESCRIPTION	SYM.
F. BUDETTI				
LIST OF MATERIAL				
THE TECHNICAL MATERIEL CORP. MAMARONECK, NEW YORK				
BRKT. CABLE GUIDE				
SIZE	B	CODE IDENT. NO.	82679	DWG NO.
			MS5610	ISSUE
				A
SCALE	1:1			SHEET

UNLESS OTHERWISE SPECIFIED DIMENSIONS ARE IN INCHES AND INCLUDE CHEMICALLY APPLIED OR PLATED FINISHES	DATE
DECIMALS	1-12-70
FRACTIONS	1-12-70
TOLS.	
ANGLES	
0° .30'	
MATERIAL	DATE
1/8 ALUM 6063 T5	9-7-69
CHANNEL 1 X 1/2 X 1	
FINISH	
S404 YEL. IRIDITE	

QTY / UNIT	MODEL USED ON	ASS'Y NO.
1	PALA-10K	AP148
APPLICATION		
CODE		

NOTICE TO PERSONS RECEIVING THIS DRAWING  
 THE TECHNICAL MATERIEL CORPORATION claims proprietary right in the material disclosed hereon. This drawing is issued in confidence for engineering information only and may not be reproduced or used to manufacture anything shown hereon without permission from THE TECHNICAL MATERIEL CORPORATION to the user. This drawing is loaned for mutual assistance and is subject to recall at any time.

ZONE	LTR	DESCRIPTION	DATE	INITIALS
X		EXP RELEASE	9/18-69	GE
Y1		DIM 1 9/16 CHG TO 1 3/2	9/24/69	GE
Ø		ORIGINAL RELEASE	1/11/70	Ø



2 HOLES 1/16 DIA.  
(2 REQ)

QTY / UNIT	1	MODEL USED ON	PALA-10K	ASSY NO.	AP 148
APPLICATION		CODE			

**NOTICE TO PERSONS RECEIVING THIS DRAWING**  
 THE TECHNICAL MATERIEL CORPORATION claims proprietary right in the material disclosed hereon. This drawing is issued in confidence for engineering information only and may not be reproduced or used to manufacture anything shown hereon without permission from THE TECHNICAL MATERIEL CORPORATION to the user. This drawing is loaned for mutual assistance and is subject to recall at any time.

DECIMALS	FRACTIONS
.X ± .05	1/64
.XX ± .01	ANGLES
.XXX ± .005	0° - 30'

FINISH S404  
VEL. IRIDITE

REQ'D ITEM	PART NUMBER	DESCRIPTION	SYM.
F. BUDETTI		COVER, CABLE GUIDE	
FINAL APPROVAL	DATE	THE TECHNICAL MATERIEL CORP. MAMARONECK, NEW YORK	
MECH. DES.	DATE		
ELECT. DES.	DATE		
CHECKED	DATE		
DRAWN	DATE		

SIZE	CODE IDENT. NO.	DWG NO.	ISSUE
B	82679	M55611	Ø
SCALE	1:1	SHEET	OF
		1	

4

3

2

1

A

B

5

D

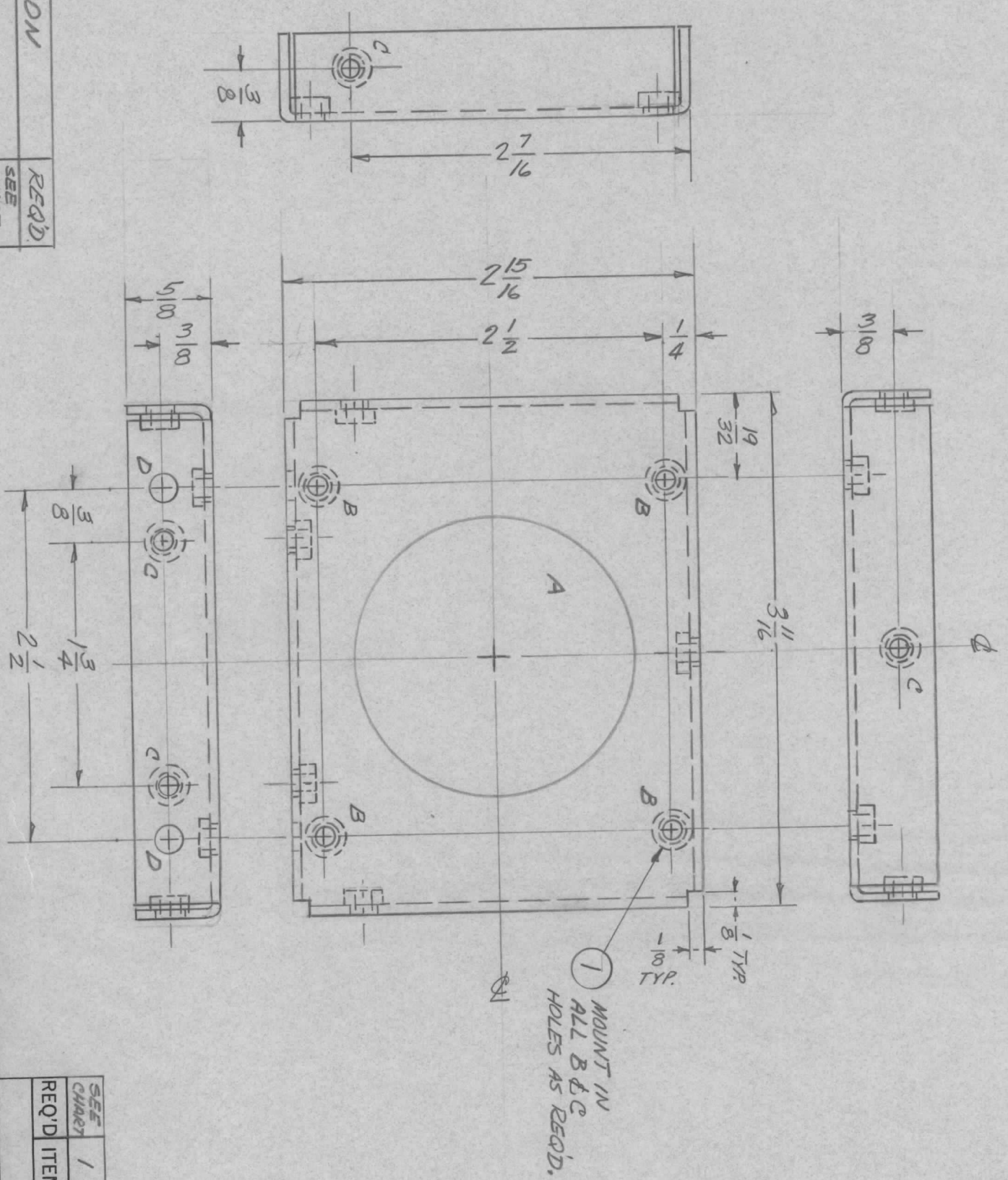
C

B

(10-66)

REVISIONS		DATE	E.M.N.NO	DRAFT	CHKD	APPD
ZONE	LTR	DESCRIPTION				
		ORIGINAL RELEASE	4/4/73	CS		

OPPOSITE  
SIDE  
IDENTICAL



HOLE	DESCRIPTION	REQ'D.
A	2" DIA.	SEE CHART
B & C	.191/.194 DIA.	SEE CHART
D	3/16 DIA	2

CHART

PART No.	"A" HOLE	"B" HOLE	"C" HOLE	ITEM 1
MS 5621-1	OMIT	OMIT	5 REQ'D	5 REQ'D
MS 5621-2	1	4 REQ'D.	5 REQ'D.	9 REQ'D

UNLESS OTHERWISE SPECIFIED:

1. USE MATERIAL THICKNESS FOR MAXIMUM RADIUS ON ALL BENDS.
2. ALL ANGULAR BENDS 90 DEGREES.
3. REMOVE ALL BURRS AND SHARP EDGES.
4. MOUNT INSERTS AFTER FINISHING.

QTY / EACH	1	MODEL USED ON	GPTR 10K	ASS'Y NO.	AF 109
APPLICATION					
CODE					

NOTICE TO PERSONS RECEIVING THIS DRAWING  
THE TECHNICAL MATERIEL CORPORATION claims proprietary right in the material disclosed hereon. This drawing is issued in confidence for engineering information only and may not be reproduced or used to manufacture anything shown hereon without permission from THE TECHNICAL MATERIEL CORPORATION to the user. This drawing is loaned for mutual assistance and is subject to recall at any time.

DECIMALS	FRACTIONS
.X ± .05	1/64
.XX ± .01	ANGLES
.XXX ± .005	0° - 30'

MATERIAL 5052 H32  
OBTAIN ALUMINUM  
FINISH 5404  
YELLOW IRIDITE

REQ'D	ITEM	PART NUMBER	DESCRIPTION	SYM.
1	NT/29-632-3	NUTS, SWAGE		B&C

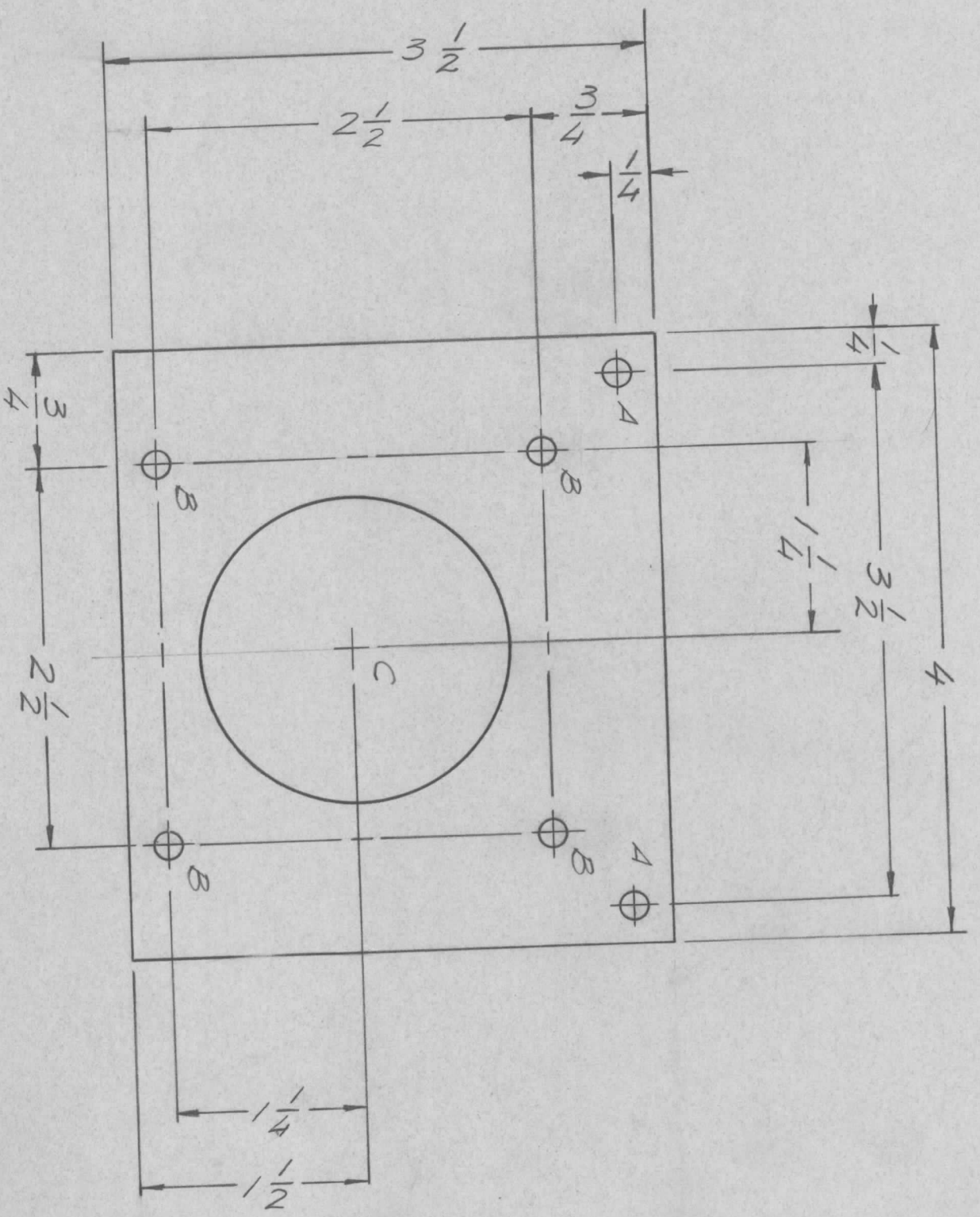
THE TECHNICAL MATERIEL CORP.  
MAMARONECK, NEW YORK

COVER, END

FINAL APPROVAL	DATE	SIZE	CODE IDENT. NO.	DWG NO.	ISSUE
MECH. DES.	DATE	B	82679	MS 5621	
ELECT. DES.	DATE	SCALE	1:1	SHEET	1 OF 1
CHECKED	DATE				
DRAWN	DATE				

ZONE	LTR	DESCRIPTION	DATE	E.M.N.NO	DRAFT	CHKD	APPD
X		EXP RELEASE	1/7/70		GE		
Ø		ORIG RELEASE FOR PROD	2/6/70		CV		

HOLE	DESCRIPTION	QTY
A	11/64 DIA.	2
B	13/64 DIA.	4
C	2" DIA.	1



REQ'D ITEM	PART NUMBER	DESCRIPTION	SYM.
LIST OF MATERIAL			
THE TECHNICAL MATERIEL CORP.			
MAMARONECK, NEW YORK			

UNLESS OTHERWISE SPECIFIED DIMENSIONS ARE IN INCHES AND INCLUDE CHEMICALLY APPLIED OR PLATED FINISHES	DECIMALS X ± .05 .XX ± .01 .XXX ± .005	FRACTIONS 1/64 ANGLES 0°-30'
FINAL APPROVAL	MECH. DES.	ELECT. DES.
DATE	DATE	DATE
CHECKED	DATE	DATE
DRAWN	DATE	DATE

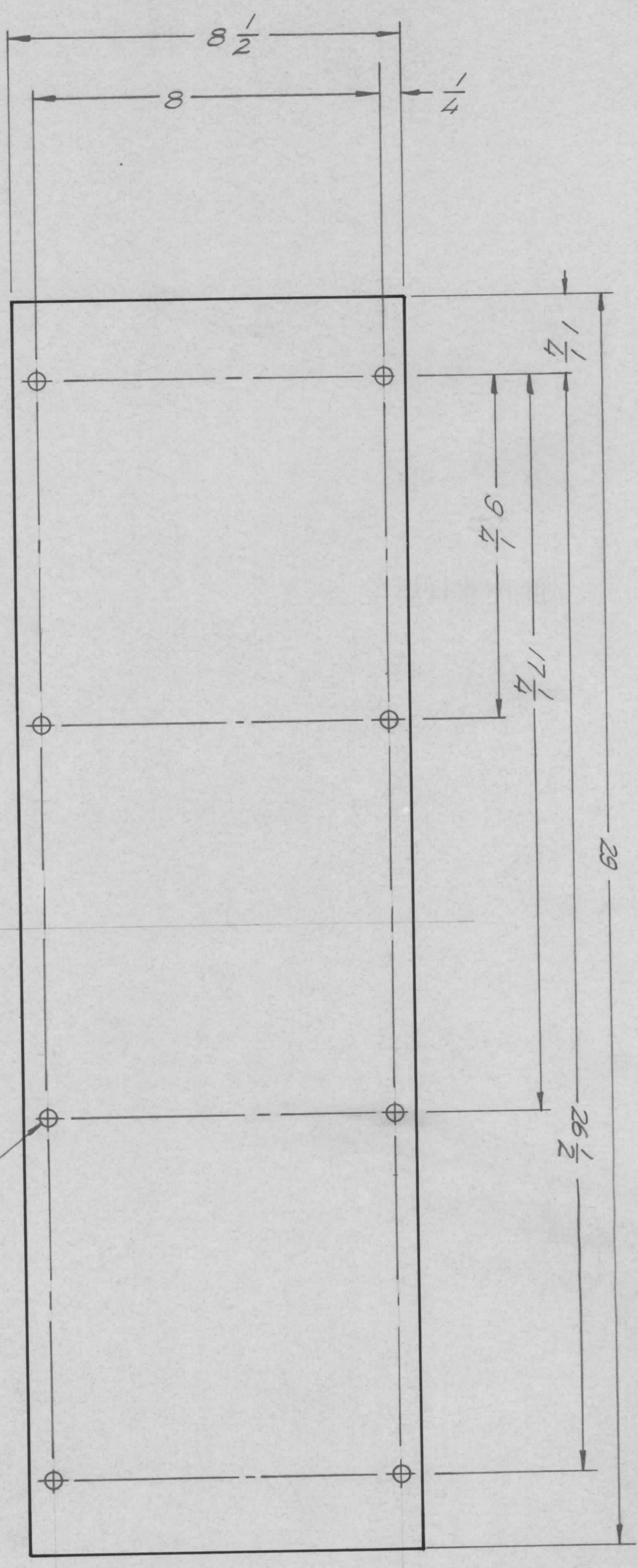
QTY / UNIT	MODEL USED ON	ASS'Y NO.
	PALAD10K	
APPLICATION		
CODE		

NOTICE TO PERSONS RECEIVING THIS DRAWING  
 THE TECHNICAL MATERIEL CORPORATION claims proprietary right in the material disclosed hereon. This drawing is issued in confidence for engineering information only and may not be reproduced or used to manufacture anything shown hereon without permission from THE TECHNICAL MATERIEL CORPORATION to the user. This drawing is loaned for mutual assistance and is subject to recall at any time.

FINISH 5052 H32  
 VEL. IRIDITE  
 MATERIAL .063 ALUMI.

SIZE	CODE IDENT. NO.	DWG NO.	ISSUE
B	82679	MS 5630	Ø
SCALE		SHEET	OF
		1	

REVISIONS							
ZONE	LTR	DESCRIPTION	DATE	E.M.N. NO	DRAFT	CHKD	APPD
	Ø	ORIGINAL RELEASE	1/19/70		GE		



FINISH NOTES  
 S404 YELLOW IRIDITE  
 S114 ZINC CHROMATE PRIMER  
 S520 BLUE GREY TEXTURED VINYL  
 OR PRIME AND PAINT AS PER  
 CUSTOMER SPECIFICATIONS

1/5/64 DIA.  
 CLEARANCE HOLES  
 8 REQUIRED

QTY / UNIT	MODEL USED ON	ASS'Y. NO.
	PALA 10 K	4X5091
APPLICATION		
	CODE	

DECIMALS	FRACTIONS
.X ± .05	1/64
.XX ± .01	ANGLES
.XXX ± .005	90° - 30'

FINAL APPROVAL	DATE
<i>[Signature]</i>	1-70
MECH. DES.	DATE
ALP. <i>[Signature]</i>	1-70
ELECT. DES.	DATE
CHECKED	DATE
DRAWN	DATE
EVANSBURG	1/17/70

LIST OF MATERIAL			
REQ'D ITEM	PART NUMBER	DESCRIPTION	SYM.
THE TECHNICAL MATERIEL CORP.			
MAMARONECK, NEW YORK			
COVER, FILTER			
LOWER REAR PANEL			
SIZE	CODE IDENT. NO.	DWG. NO.	ISSUE
B	82679	NSS 5633	Ø
SCALE	NTS	SHEET	OF
		1	1

**NOTICE TO PERSONS RECEIVING THIS DRAWING**  
 THE TECHNICAL MATERIEL CORPORATION claims proprietary right in the material disclosed hereon. This drawing is issued in confidence for engineering information only and may not be reproduced or used to manufacture anything shown hereon without permission from THE TECHNICAL MATERIEL CORPORATION to the user. This drawing is loaned for mutual assistance and is subject to recall at any time.

FCL-10-170 (10-66)

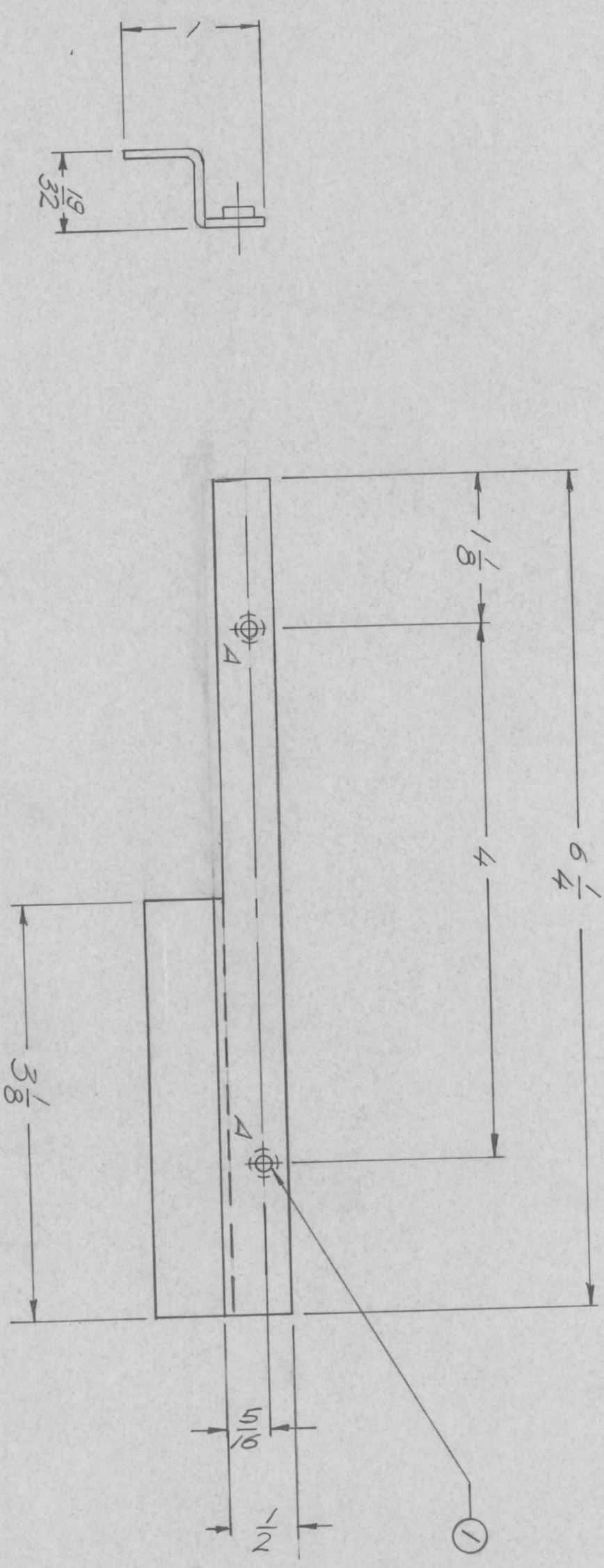
MS 5635-1	AS SHOWN
MS 5635-2	OPPOSITE HAND

5

4

REVISIONS

ZONE	LTR	DESCRIPTION	DATE	E.M.N.NO	DRAFT	CHKD	APPD
	X	EXP RELEASE	1/27/70		GE		
	Ø	ORIGINAL RELEASE	1/29/70		Ø		



A HOLES .191~.194 DIA.  
(2 REQ)

QTY / UNIT	1 ea.
MODEL USED ON	PALD 10 K
ASS'Y NO.	4X 5086
APPLICATION	
CODE	

UNLESS OTHERWISE SPECIFIED DIMENSIONS ARE IN INCHES AND INCLUDE CHEMICALLY APPLIED OR PLATED FINISHES

DECIMALS: .X ± .05 TOLS. 1/64 ANGLES: .XX ± .01 ° .30' .XXX ± .005

MATERIAL: .064 ALUM

5052 H 32

FINISH S 404

VEL. IRDITE

REQ'D ITEM	PART NUMBER	DESCRIPTION	SYM.
2	1	NUT PLN SPLINE	A

THE TECHNICAL MATERIEL CORP.  
MAMARONECK, NEW YORK

TRACK, FILTER  
LEFT & RIGHT

SIZE	B
CODE IDENT. NO.	82679
DWG NO.	MS 5635
SCALE	
SHEET	1
OF	
ISSUE	Ø

NOTICE TO PERSONS RECEIVING THIS DRAWING  
THE TECHNICAL MATERIEL CORPORATION claims proprietary right in the material disclosed hereon. This drawing is issued in confidence for engineering information only and may not be reproduced or used to manufacture anything shown hereon without permission from THE TECHNICAL MATERIEL CORPORATION to the user. This drawing is loaned for mutual assistance and is subject to recall at any time.

A

B

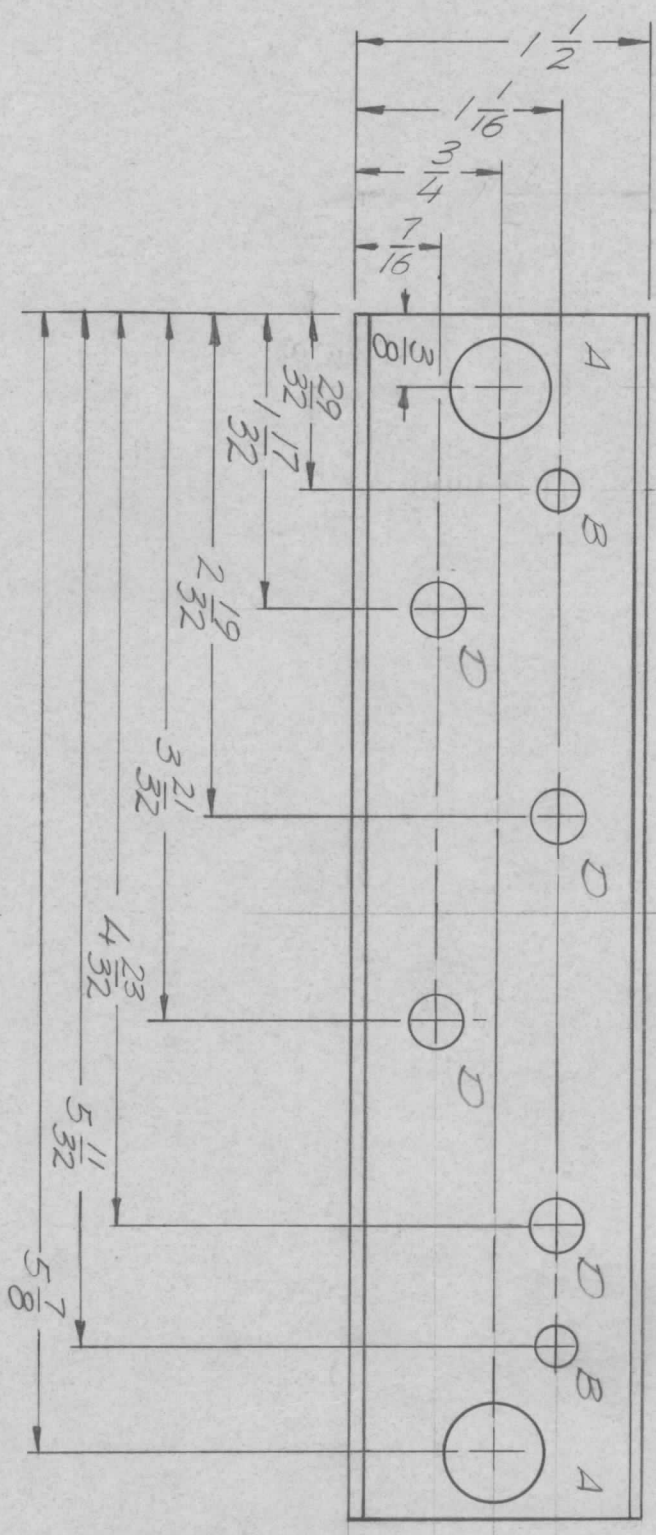
3

2

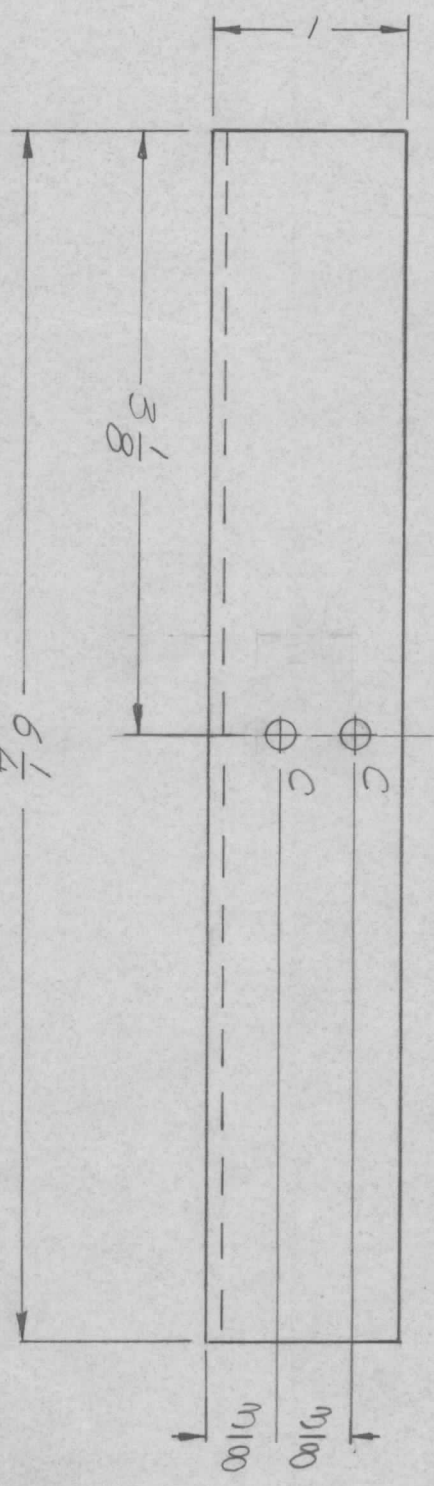
1



REVISIONS							
ZONE	LTR	DESCRIPTION	DATE	E.M.N. NO.	DRAFT	CHKD	APPD
X		EXP RELEASE	5/70		GE		
Ø		ORIG. RELEASE FOR PROD.	10/24/71		PG		



HOLE	DESCRIPTION	REQ.
A	1/2 DIA.	2
B	13/64 DIA.	2
C	9/64 DIA.	4
D	17/64 DIA.	4



OPPOSITE SIDE IDENTICAL

REQ'D ITEM	PART NUMBER	DESCRIPTION	SYM.
F. BUDETTI		LIST OF MATERIAL	

FINAL APPROVAL		DATE	
MECH. DES.	<i>[Signature]</i>	DATE	4/21/71
ELECT. DES.	<i>[Signature]</i>	DATE	10/25/71
CHECKED	<i>[Signature]</i>	DATE	
DRAWN	GE	DATE	4/22/71

QTY / UNIT	1	MODEL USED ON	HELA 10K	ASS'Y NO.	AX 5096
APPLICATION					
CODE					

**NOTICE TO PERSONS RECEIVING THIS DRAWING**  
 THE TECHNICAL MATERIEL CORPORATION claims proprietary right in the material disclosed hereon. This drawing is issued in confidence for engineering information only and may not be reproduced or used to manufacture anything shown hereon without permission from THE TECHNICAL MATERIEL CORPORATION to the user. This drawing is loaned for mutual assistance and is subject to recall at any time.

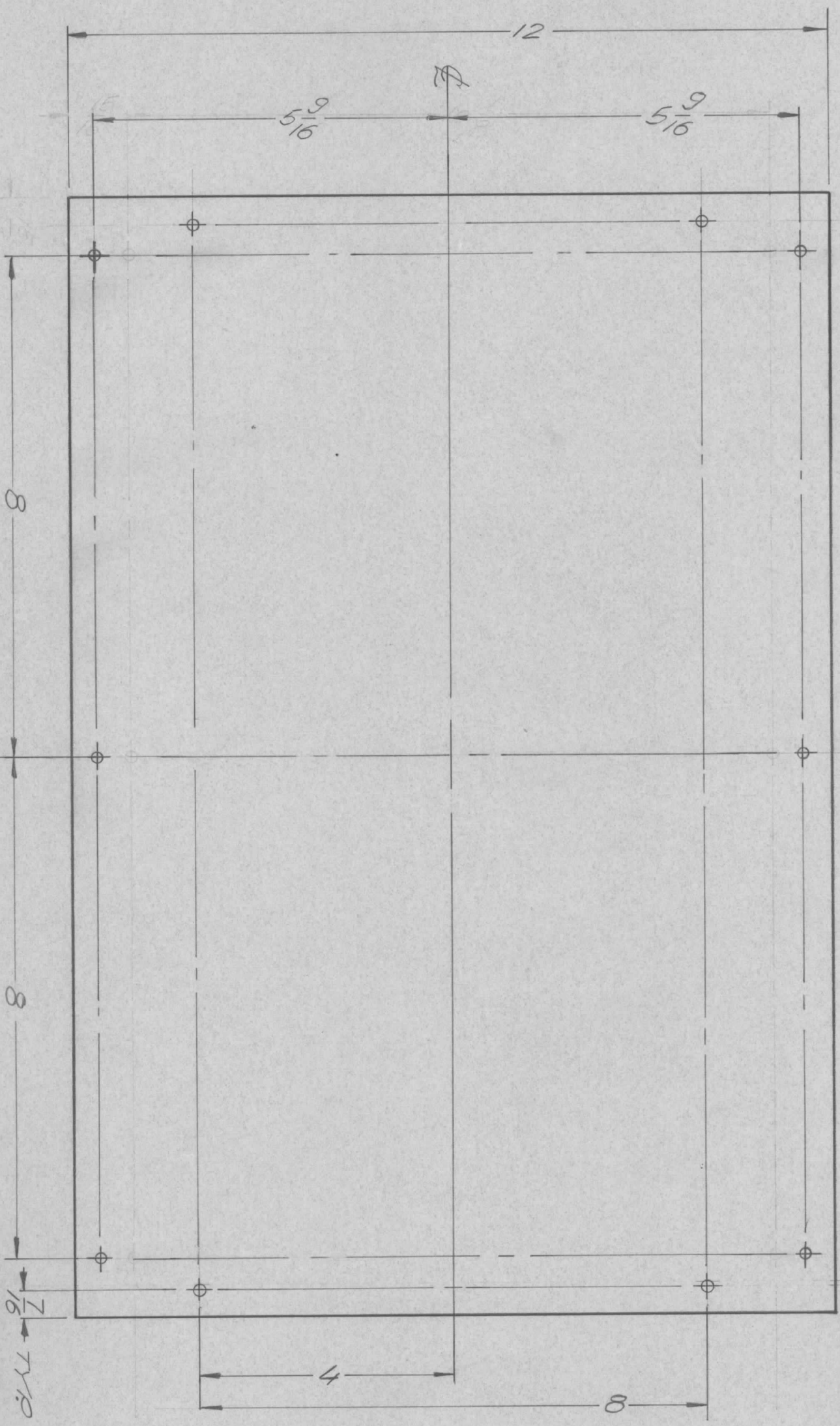
UNLESS OTHERWISE SPECIFIED DIMENSIONS ARE IN INCHES AND INCLUDE CHEMICALLY APPLIED OR PLATED FINISHES	
DECIMALS	FRACTIONS
X ± .05	1/64
.XX ± .01	ANGLES
.XXX ± .005	° .30'
MATERIAL	.081 ALUM
FINISH	5052 H32
	S404
	VEL. IRIDITE

SIZE	B	CODE IDENT. NO.	82679	DWG NO.	M5 5639	ISSUE	Ø
SCALE		SHEET		OF			



REVISIONS							
ZONE	LTR	DESCRIPTION	DATE	E.M.N. NO.	DRAFT	CHKD	APPD
	X	EXP. RELEASE	8/24/78		GE		
	Ø	ORIGINAL RELEASE	9/17/78		Ø		

ALL HOLES 3/16 DIA.



REQ'D	ITEM	PART NUMBER	DESCRIPTION	SYM.
		F. BUDETTI	LIST OF MATERIAL	

FINAL APPROVAL	MECH. DES.	ELECT. DES.	DATE	DATE	DATE	DATE
<i>[Signature]</i>	<i>[Signature]</i>		17 SEP 78	9/17/78		

SIZE	CODE IDENT. NO.	DWG NO.	ISSUE
B	82679	MS 5648	Ø
SCALE	1/2		
			SHEET OF

QTY / UNIT	MODEL USED ON	ASS'Y NO.
1	SYM 1200	AX 5121

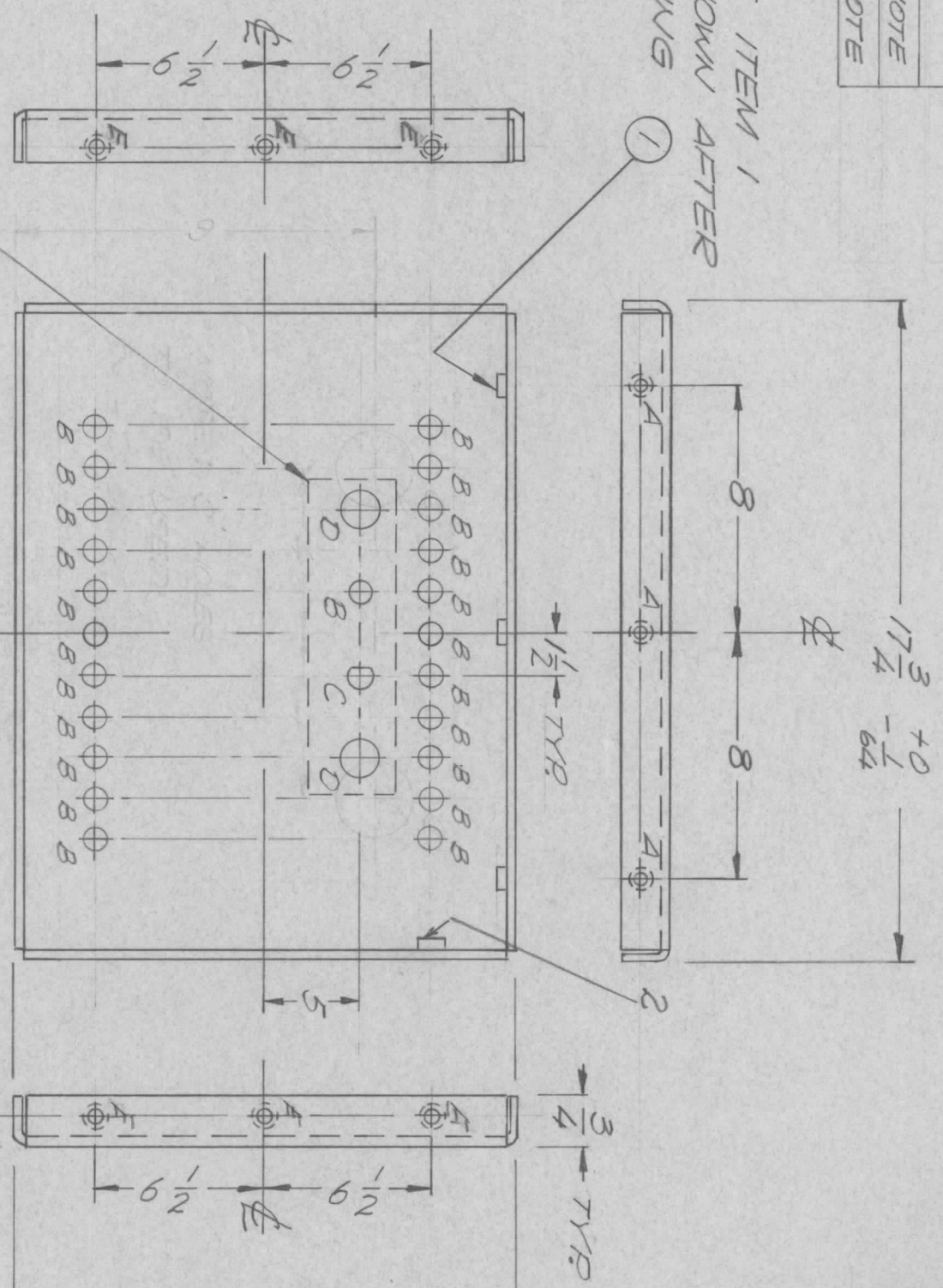
DECIMALS	FRACTIONS
.X ± .05	1/64
.XX ± .01	ANGLES
.XXX ± .005	0° - 30'

NOTICE TO PERSONS RECEIVING THIS DRAWING  
 THE TECHNICAL MATERIEL CORPORATION claims proprietary right in the material disclosed hereon. This drawing is issued in confidence for engineering information only and may not be reproduced or used to manufacture anything shown hereon without permission from THE TECHNICAL MATERIEL CORPORATION to the user. This drawing is loaned for mutual assistance and is subject to recall at any time.

- UNLESS OTHERWISE SPECIFIED:
1. USE MATERIAL THICKNESS FOR MAXIMUM RADIUS ON ALL BENDS.
  2. ALL ANGULAR BENDS 90 DEGREES.
  3. REMOVE ALL BURRS AND SHARP EDGES.
  4. MOUNT INSERTS AFTER FINISHING.

TMC P/N	
MS 5649-1	SEE NOTE
MS 5649-2	SEE NOTE

MOUNT ITEM 1 AS SHOWN AFTER FINISHING



NOTE:  
FOR MS5649-2 DELETE HOLES D, B, C, D AS SHOWN IN DOTTED LINE ONLY.  
FOR MS 5649-1 INCLUDE HOLES D, B, C, D IN DOTTED LINE.  
REF: LD2420

HOLE	DESCRIPTION	QTY
A	.191-.194 DIA.	3
B	1/2 DIA.	23
C	SEE DETAIL	1
D	1" DIA.	2
E	.251-.254 DIA	9

C - DETAIL

REQ'D	ITEM	PART NUMBER	DESCRIPTION	SYM.
9	2	NT129-1032-4	NUT SPLINE	E
3	1	NT129-0632-4	NUT SPLINE	A

DATE	DATE	DATE	DATE
17 SEP 70	9/17/70	9/17/70	9/17/70

THE TECHNICAL MATERIEL CORP.  
MAMARONECK, NEW YORK

PAVEL FR. & REAR

- UNLESS OTHERWISE SPECIFIED:
- USE MATERIAL THICKNESS FOR MAXIMUM RADIUS ON ALL BENDS.
  - ALL ANGULAR BENDS 90 DEGREES.
  - REMOVE ALL BURRS AND SHARP EDGES.
  - MOUNT INSERTS AFTER FINISHING.

QTY / UNIT	2	SYN 1200	AX 5121
MODEL USED ON	APPLICATION		
CODE	ASS'Y NO.		

UNLESS OTHERWISE SPECIFIED DIMENSIONS ARE IN INCHES AND INCLUDE CHEMICALLY APPLIED OR PLATED FINISHES

DECIMALS: .X ± .05, .XX ± .01, .XXX ± .005

FRACTIONS: 1/64, ANGLES: 0°-30'

MATERIAL: .081 ALUM., 5052 H32

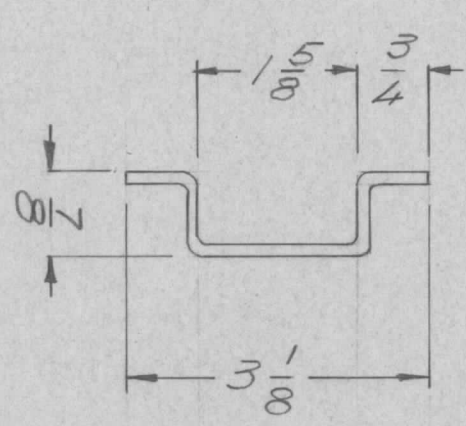
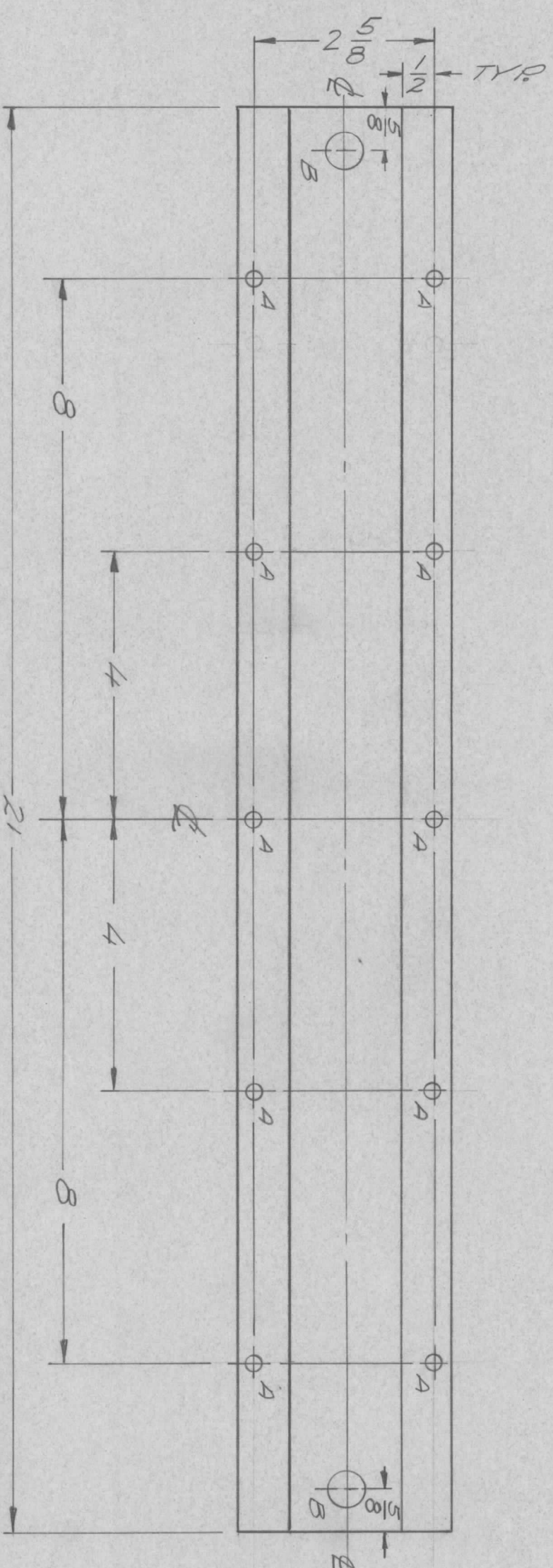
FINISH: S114 S520, TMC BLUE-GREY TEXTURED

FINAL APPROVAL	MECH. DES.	ELECT. DES.	CHECKED	DRAWN
RE	RE			GE

SIZE	CODE IDENT. NO.	DWG NO.	ISSUE
B	82679	MS 5649	0
SCALE	N.T.S.	SHEET	OF

HOLE DESCRIPTION QTY  
 A 15/64 DIA. 10  
 B 9/32 DIA. 2

REVISIONS							
ZONE	LTR	DESCRIPTION	DATE	E.M.N. NO	DRAFT	CHKD	APPD
X		EXP RELEASE	8/5/70		GE		
Ø		ORIGINAL RELEASE	9/1/70		CS		



- UNLESS OTHERWISE SPECIFIED:
1. USE MATERIAL THICKNESS FOR MAXIMUM RADIUS ON ALL BENDS.
  2. ALL ANGULAR BENDS 90 DEGREES.
  3. REMOVE ALL BURRS AND SHARP EDGES.
  4. MOUNT INSERTS AFTER FINISHING.

QTY / UNIT	2	MODEL USED ON	SYH1200	ASS'Y NO.	AX5121
APPLICATION					
CODE					

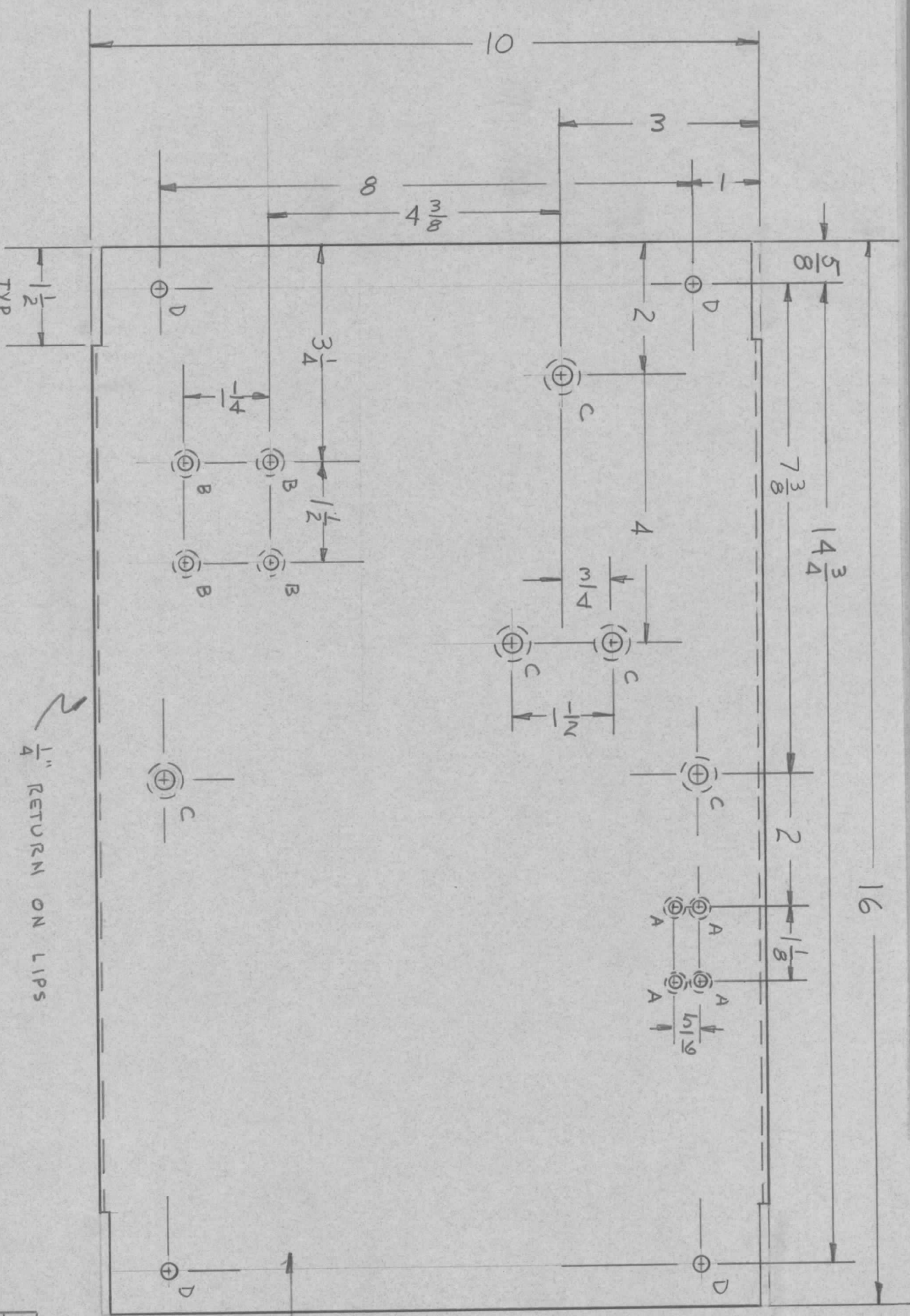
UNLESS OTHERWISE SPECIFIED DIMENSIONS ARE IN INCHES AND INCLUDE CHEMICALLY APPLIED OR PLATED FINISHES	DECIMALS	TOLS.	FRACTIONS	ANGLES
	.X ± .05		1/64	
	.XX ± .01			0° - 30'
	.XXX ± .005			

REQ'D ITEM	F. BUDETTI	PART NUMBER	
FINAL APPROVAL	[Signature]	DATE	11/18/70
MECH. DES.	[Signature]	DATE	11/18/70
ELECT. DES.		DATE	
CHECKED		DATE	
DRAWN	GE	DATE	8/5/70

LIST OF MATERIAL			
THE TECHNICAL MATERIEL CORP.			
MAMARONECK, NEW YORK			
CHANNEL SUPPORT			
SIZE	CODE IDENT. NO.	DWG NO.	ISSUE
B	82679	M/S 5650	Ø
SCALE	1/2	SHEET	OF

NOTICE TO PERSONS RECEIVING THIS DRAWING  
 THE TECHNICAL MATERIEL CORPORATION claims proprietary right in the material disclosed hereon. This drawing is issued in confidence for engineering information only and may not be reproduced or used to manufacture anything shown hereon without permission from THE TECHNICAL MATERIEL CORPORATION to the user. This drawing is loaned for mutual assistance and is subject to recall at any time.

REVISIONS							
ZONE	LTR	DESCRIPTION	DATE	E.M.N.NO	DRAFT	CHKD	APPD
		ORIGINAL RELEASE	1/20/70				



MARK TMC PART NUMBER  
1/8 HIGH GOTHIC WITH LATEST  
REVISION LETTER ON REAR OF PANEL

- A ~ .161-.164 DIA. 4 REQ
- B ~ .191-.194 DIA 4 REQ
- C ~ .250-.254 DIA 5 REQ
- D ~ 15/64 DIA 4 REQ

REF:LD2431

REQ'D ITEM	PART NUMBER	DESCRIPTION	SYM.
5	NT129-1032-4	NTJ SWAGE TYPE	C
4	NT129-0632-4	NTJ SWAGE TYPE	B
4	NT129-0440-4	NTJ SWAGE TYPE	A

LIST OF MATERIAL			
THE TECHNICAL MATERIEL CORP.			
MAMARONECK, NEW YORK			
FINAL APPROVAL	DATE		
MECH. DES.	DATE		
ELECT. DES.	DATE		
CHECKED	DATE		
DRAWN	DATE		

PLATE, RELAY MTG

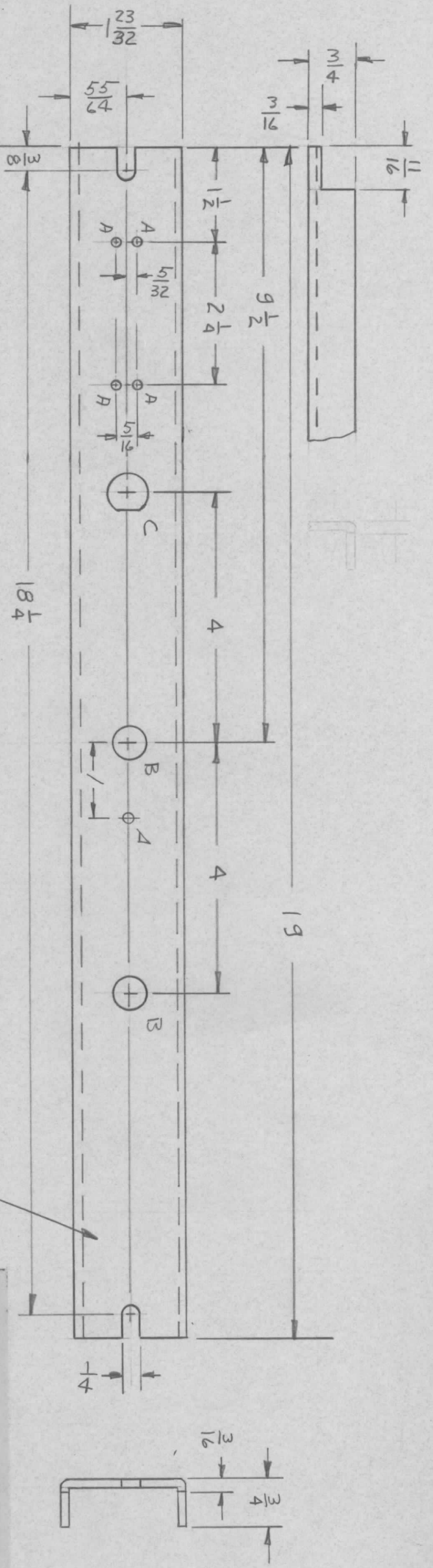
SIZE	CODE IDENT. NO.	DWG NO.	ISSUE
B	82679	M55653	
SCALE	SHEET		OF

QTY / UNIT	MODEL USED ON	ASSY NO.
1	BHA455K	AX5125
APPLICATION		
CODE		

UNLESS OTHERWISE SPECIFIED THIS DRAWING  
 THE TECHNICAL MATERIEL CORPORATION claims proprietary right in the material disclosed hereon. This drawing is issued in confidence for engineering information only and may not be reproduced or used to manufacture anything shown hereon without permission from THE TECHNICAL MATERIEL CORPORATION to the user. This drawing is loaned for mutual assistance and is subject to recall at any time.

- UNLESS OTHERWISE SPECIFIED:
1. USE MATERIAL THICKNESS FOR MAXIMUM RADIUS ON ALL BENDS.
  2. ALL ANGULAR BENDS 90 DEGREES.
  3. REMOVE ALL BURRS AND SHARP EDGES.
  4. MOUNT INSERTS AFTER FINISHING.

REVISIONS							
ZONE	LTR	DESCRIPTION	DATE	E.M.N. NO	DRAFT	CHKD	APPD
	Ø	ORIGINAL RELEASE	9/20/70		CU		
	A	ADD 1" DIA HOLE	1/10/70	20084	GE	CU	G.28



A ~ 9/64 DIA. 5 REQ.  
 B ~ 15/32 DIA. 2 REQ.

C DETAIL 1 REQ.

**FINISH NOTES:**

1. S404 - IRIDITE 14-2 AL-COAT.
2. S114 - ZINC CHROMATE PRIMER
3. S115 - SMOOTH GRAY ENAMEL

OR  
 PRIME AND PAINT PER CUSTOMER'S SPECIFICATIONS

FRONT AND EDGES ONLY

MARK TMC PART NUMBER  
 1/8 HIGH GOTHIC WITH LATEST  
 REVISION LETTER ON REAR OF PANEL

REF: LD2419

REQ'D	ITEM	PART NUMBER	DESCRIPTION	SYM.
			LIST OF MATERIAL	
			THE TECHNICAL MATERIEL CORP. MAMARONECK, NEW YORK	
			PNL CONTROL	
			SIZE CODE IDENT. NO. DWG NO.	ISSUE
			B 82679 MS5660	A
			SCALE SHEET	OF

QTY / UNIT	1	SYM 1200	AX 5120
MODEL USED ON	APPLICATION		
CODE			

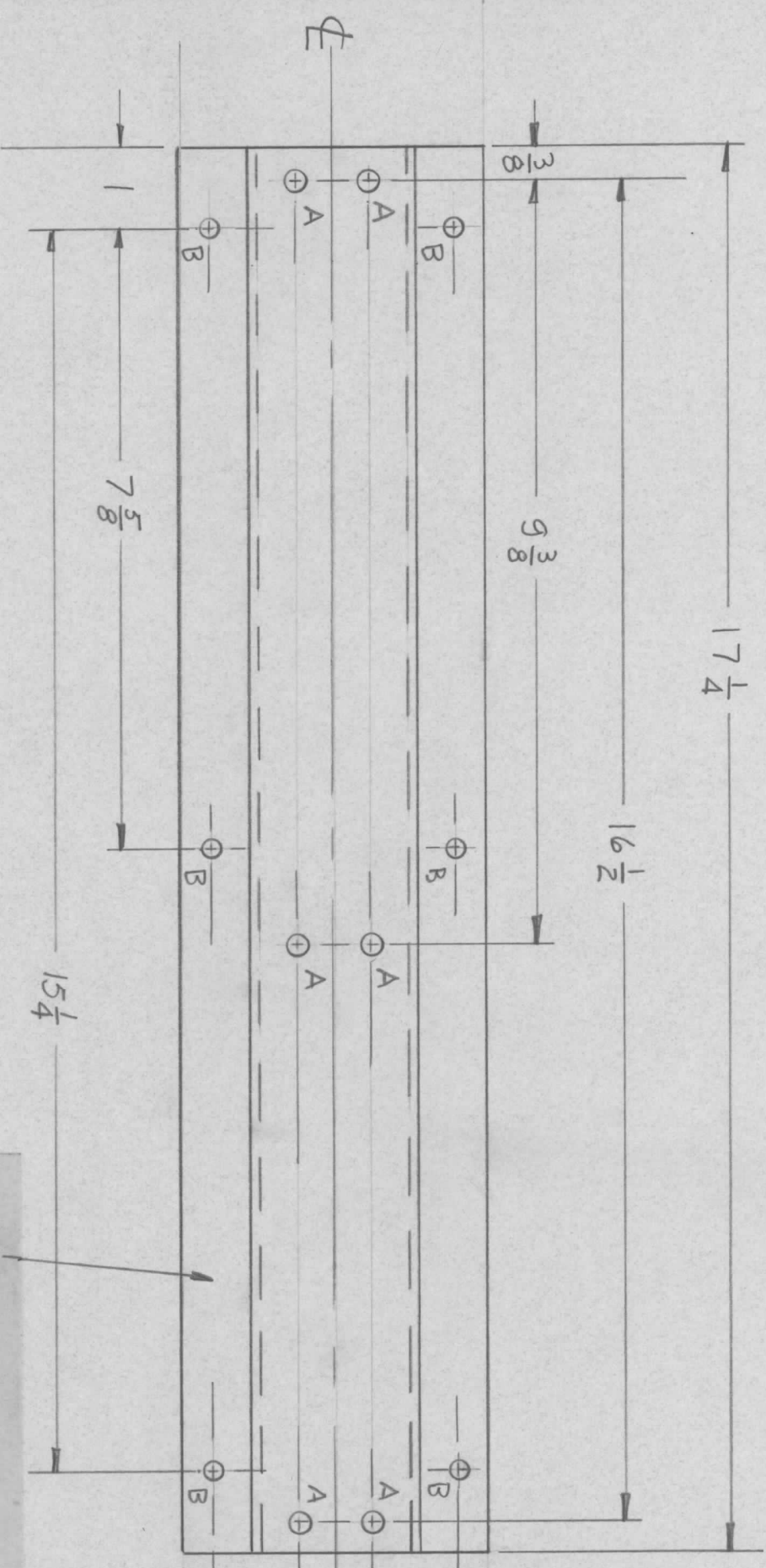
**NOTICE TO PERSONS RECEIVING THIS DRAWING**  
 THE TECHNICAL MATERIEL CORPORATION claims proprietary right in the material disclosed herein. This drawing is issued in confidence for engineering information only and may not be reproduced or used to manufacture anything shown herein without permission from THE TECHNICAL MATERIEL CORPORATION to the user. This drawing is loaned for mutual assistance and is subject to recall at any time.

UNLESS OTHERWISE SPECIFIED DIMENSIONS ARE IN INCHES AND INCLUDE CHEMICALLY APPLIED OR PLATED FINISHES	DECIMALS	FRACTIONS
.X ± .05	1/64	ANGLES
.XX ± .01	0° - 30'	
.XXX ± .005		

5052-H32  
 FINISH  
 SEE NOTES

FINAL APPROVAL	DATE
<i>[Signature]</i>	7/15/70
MECH. DES.	DATE
<i>[Signature]</i>	2/15/70
ELECT. DES.	DATE
CHECKED	DATE
DRAWN	DATE
<i>[Signature]</i>	1/15/70

REVISIONS							
ZONE	LTR	DESCRIPTION	DATE	E.M.N.NO	DRAFT	CHKD	APPD
	Ø	ORIGINAL RELEASE	10/15/70		CU		



MARK TMC PART NUMBER  
1/8 HIGH GOTHIC WITH LATEST  
REVISION LETTER

A ~ .250 - .254 DIA. 6 REQ.  
B ~ 13/64 DIA. 6 REQ.

- UNLESS OTHERWISE SPECIFIED:
1. USE MATERIAL THICKNESS FOR MAXIMUM RADIUS ON ALL BENDS.
  2. ALL ANGULAR BENDS 90 DEGREES.
  3. REMOVE ALL BURRS AND SHARP EDGES.
  4. MOUNT INSERTS AFTER FINISHING.

QTY / UNIT	1	MODEL USED ON	HELIX-1K	ASS'Y NO.	AP150
APPLICATION		CODE			

NOTICE TO PERSONS RECEIVING THIS DRAWING  
THE TECHNICAL MATERIEL CORPORATION claims proprietary right in the material disclosed hereon. This drawing is issued in confidence for engineering information only and may not be reproduced or used to manufacture anything shown hereon without permission from THE TECHNICAL MATERIEL CORPORATION to the user. This drawing is loaned for mutual assistance and is subject to recall at any time.

DECIMALS	.X ± .05	TOLS.	1/64
	.XX ± .01	ANGLES	0° - 30'
	.XXX ± .005		
MATERIAL	.081 ALUM.		
FINISH	5052-H32		
	S404 YEL. IRID		

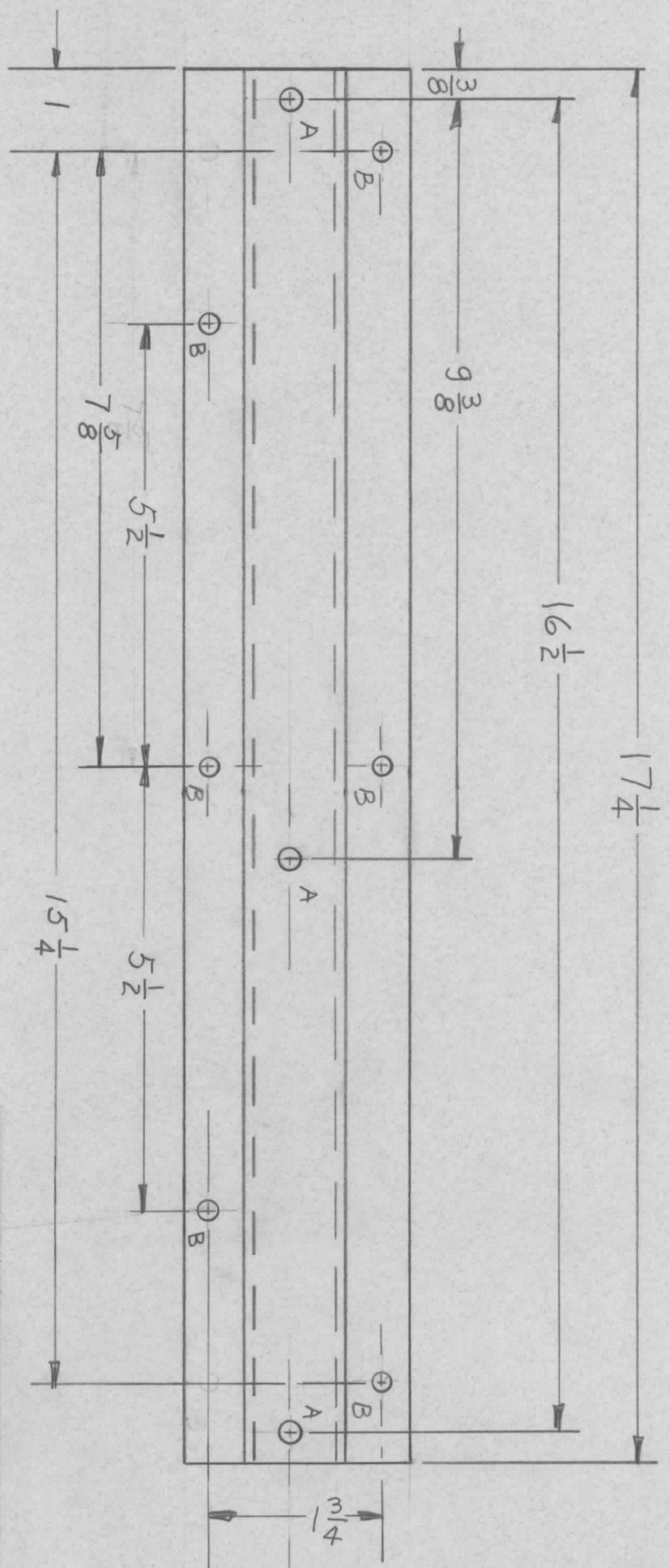
REQ'D ITEM	PART NUMBER	DESCRIPTION	SYM.
6	1	NT129-1032-6 NUT, PLN, SPLINE	

FINAL APPROVAL	DATE	12/21/70
MECH. DES.	DATE	5/21/70
ELECT. DES.	DATE	
CHECKED	DATE	
DRAWN	DATE	2/11/70

LIST OF MATERIAL	THE TECHNICAL MATERIEL CORP.		
	MAMARONECK, NEW YORK		
CHANNEL, SUPPORT			
SIZE	CODE IDENT. NO.	DWG NO.	ISSUE
B	82679	MS5671	Ø
SCALE	SHEET	OF	



REVISIONS							
ZONE	LTR	DESCRIPTION	DATE	E.M.N.NO	DRAFT	CHKD	APPD
	Ø	ORIGINAL RELEASE	10/15/70				



A ~ .250-.254 DIA. 3 REQ.  
 B ~ 13/64 DIA. 6 REQ.

MARK TMC PART NUMBER  
 1/8 HIGH GOTHIC WITH LATEST  
 REVISION LETTER

1 MOUNT IN ALL "A" HOLES  
 AS SHOWN AFTER FINISHING.

- UNLESS OTHERWISE SPECIFIED:
1. USE MATERIAL THICKNESS FOR MAXIMUM RADIUS ON ALL BENDS.
  2. ALL ANGULAR BENDS 90 DEGREES.
  3. REMOVE ALL BURRS AND SHARP EDGES.
  4. MOUNT INSERTS AFTER FINISHING.

QTY / UNIT	2	MODEL USED ON	HFLM-1K	ASS'Y NO.	AP150
APPLICATION		CODE			

NOTICE TO PERSONS RECEIVING THIS DRAWING  
 THE TECHNICAL MATERIEL CORPORATION claims proprietary right in the material disclosed herein. This drawing is issued in confidence for engineering information only and may not be reproduced or used to manufacture anything shown herein without permission from THE TECHNICAL MATERIEL CORPORATION to the user. This drawing is loaned for mutual assistance and is subject to recall at any time.

DECIMALS	.X ± .05	TOLS.	1/64
	.XX ± .01	ANGLES	0°-30'
	.XXX ± .005		
MATERIAL .081 ALUM			
5052-H 32			
FINISH 5404 YEL. IRID.			

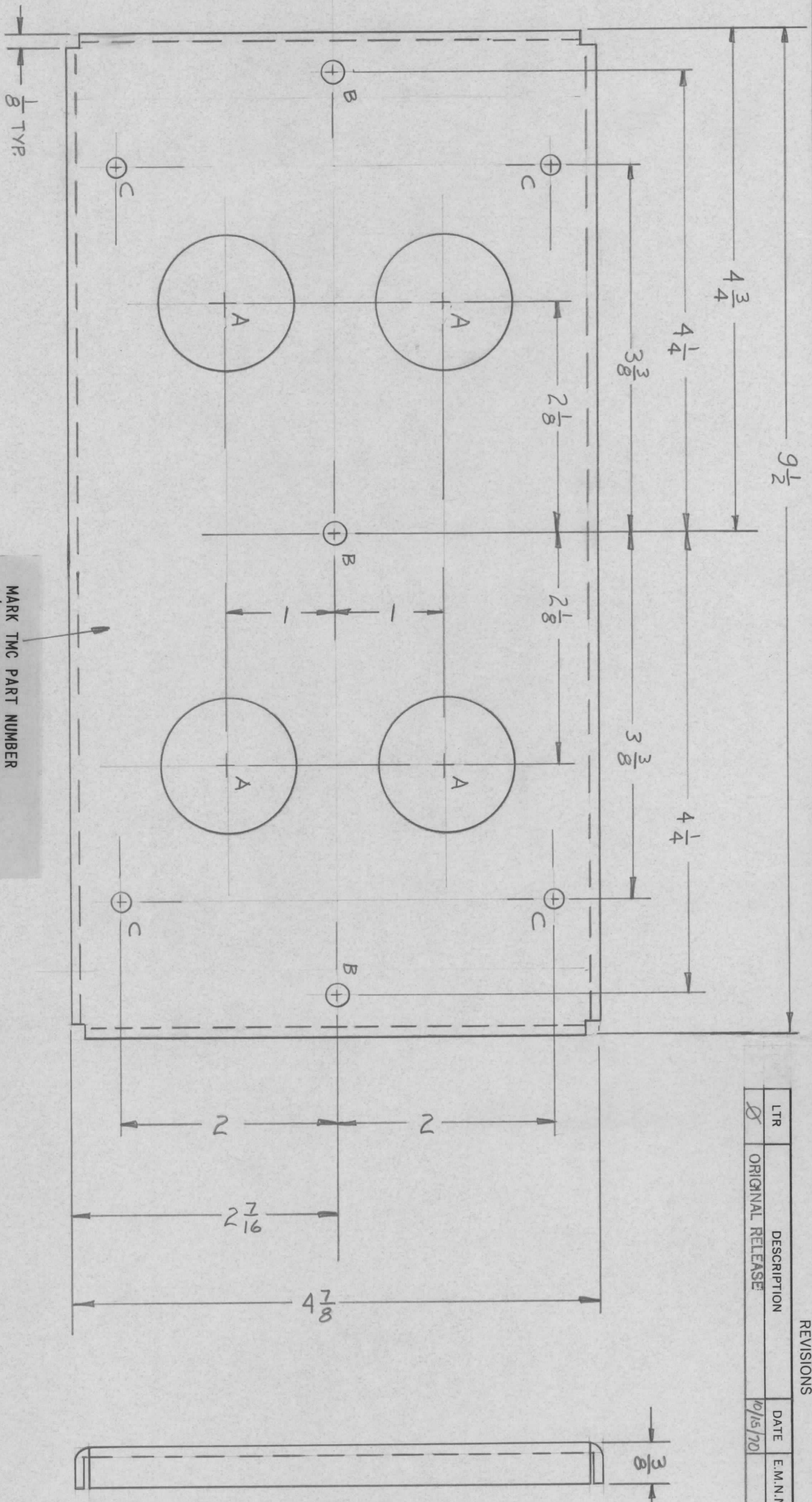
REQ'D ITEM	PART NUMBER	DESCRIPTION	SYM.
3	1	NT129-1032-6 NUT, PLN SPLINE	

LIST OF MATERIAL  
 THE TECHNICAL MATERIEL CORP.  
 MAMARONECK, NEW YORK  
 CHANNEL SUPPORT

FINAL APPROVAL	DATE	MECH. DES.	DATE	ELECT. DES.	DATE
<i>[Signature]</i>	12 24 70	<i>[Signature]</i>	5 27 70		
CHECKED	DATE	DRAWN	DATE		
<i>[Signature]</i>	29 SEP 70	<i>[Signature]</i>			
SIZE	CODE IDENT. NO.	DWG NO.	ISSUE		
B	82679	MS 5672	Ø		
SCALE	SHEET		OF		

LTR	DESCRIPTION	DATE	E.M.N. NO	DRAFT	CHKD	APPD
Ø	ORIGINAL RELEASE	10/15/70		W		

REVISIONS



- UNLESS OTHERWISE SPECIFIED:
1. USE MATERIAL THICKNESS FOR MAXIMUM RADIUS ON ALL BENDS.
  2. ALL ANGULAR BENDS 90 DEGREES.
  3. REMOVE ALL BURRS AND SHARP EDGES.
  4. MOUNT INSERTS AFTER FINISHING.

MARK TMC PART NUMBER  
1/8 HIGH GOTHIC WITH LATEST  
REVISION LETTER

- A ~ 1/4 DIA. 4 REQ.
- B ~ 15/64 DIA. 3 REQ.
- C ~ 11/64 DIA. 4 REQ.

QTY / UNIT	2	MODEL USED ON	HFLM-1K	ASS'Y NO.	AP150
APPLICATION					
CODE					

NOTICE TO PERSONS RECEIVING THIS DRAWING  
THE TECHNICAL MATERIEL CORPORATION claims proprietary right in the material disclosed hereon. This drawing is issued in confidence for engineering information only and may not be reproduced or used to manufacture anything shown hereon without permission from THE TECHNICAL MATERIEL CORPORATION to the user. This drawing is loaned for mutual assistance and is subject to recall at any time.

DECIMALS	FRACTIONS
.X ± .05	1/64
.XX ± .01	TOLS. ANGLES
.XXX ± .005	0° - 30'
MATERIAL, 081 ALUM	
5052-H32	
FINISH	
S404 VEL IRID	

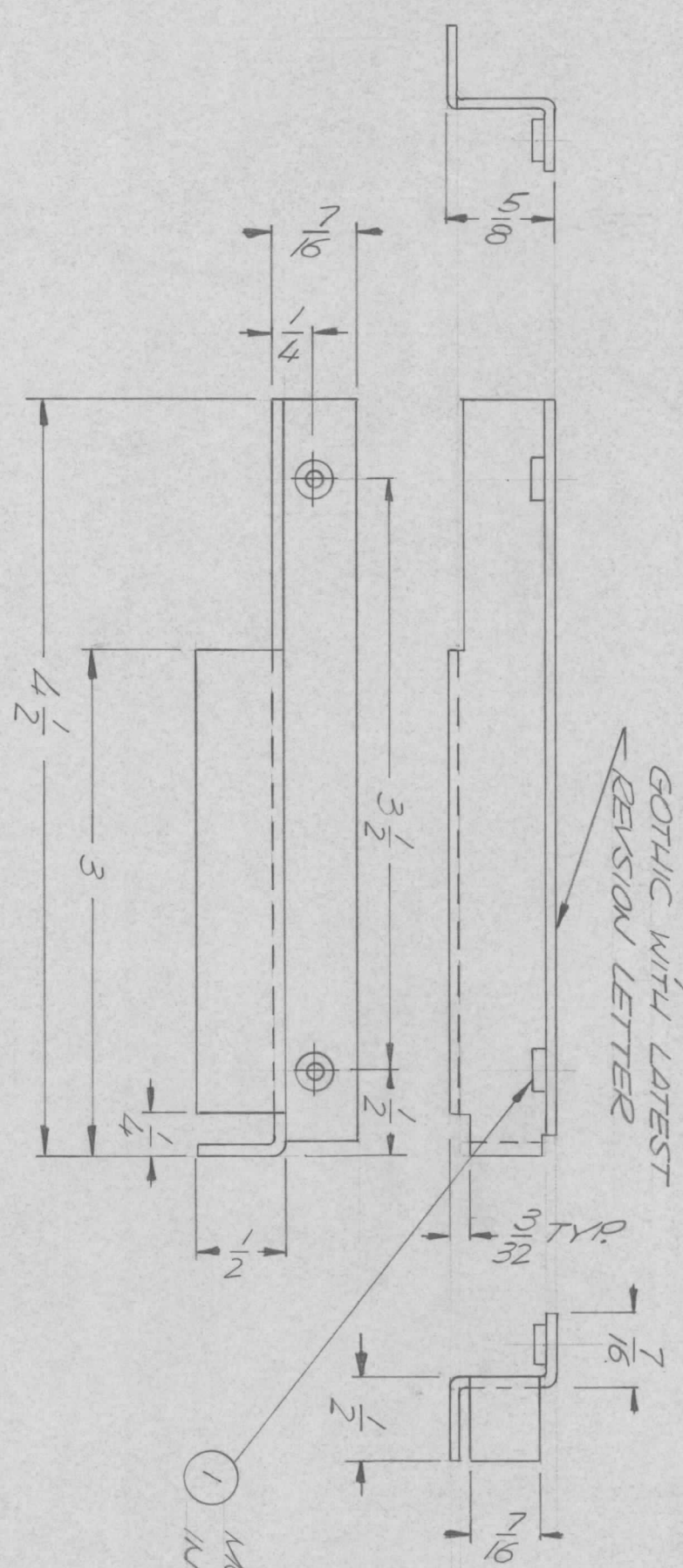
REQ'D ITEM	PART NUMBER	DATE
BUDGET 1		12/10
MECH. DES.		5/27/70
ELECT. DES.		
CHECKED		DATE
DRAWN		DATE

LIST OF MATERIAL			
THE TECHNICAL MATERIEL CORP.			
MAMARONECK, NEW YORK			
BRACKET, CAP			
SIZE	CODE IDENT. NO.	DWG NO.	ISSUE
B	82679	M55673	Ø
SCALE	SHEET		OF

MS 5676-1 AS SHOWN  
 MS 5676-2 OPPOSITE HAND

REVISIONS							
ZONE	LTR	DESCRIPTION	DATE	E.M.N. NO	DRAFT	CHKD	APPD
	<del>Ø</del>	ORIGINAL RELEASE	10/21/70				

METAL STAMP TMC  
 PART NO. 1/8 HIGH  
 GOTHIC WITH LATEST  
 REVISION LETTER



HOLE CHART  
 .161-.164 DIA. -(2 REQ)

1 MOUNT ITEM 1 AS SHOWN  
 IN ALL 'A' HOLES (2 REQ)

UNLESS OTHERWISE SPECIFIED:

1. USE MATERIAL THICKNESS FOR MAXIMUM RADIUS ON ALL BENDS.
2. ALL ANGULAR BENDS 90 DEGREES.
3. REMOVE ALL BURRS AND SHARP EDGES.
4. MOUNT INSERTS AFTER FINISHING.

QTY / UNIT	1	MODEL USED ON	HELM 1K	ASS'Y NO.	BMA 454
APPLICATION		CODE			

NOTICE TO PERSONS RECEIVING THIS DRAWING  
 THE TECHNICAL MATERIEL CORPORATION claims proprietary right in the material disclosed herein. This drawing is issued in confidence for engineering information only and may not be reproduced or used to manufacture anything shown herein without permission from THE TECHNICAL MATERIEL CORPORATION to the user. This drawing is loaned for mutual assistance and is subject to recall at any time.

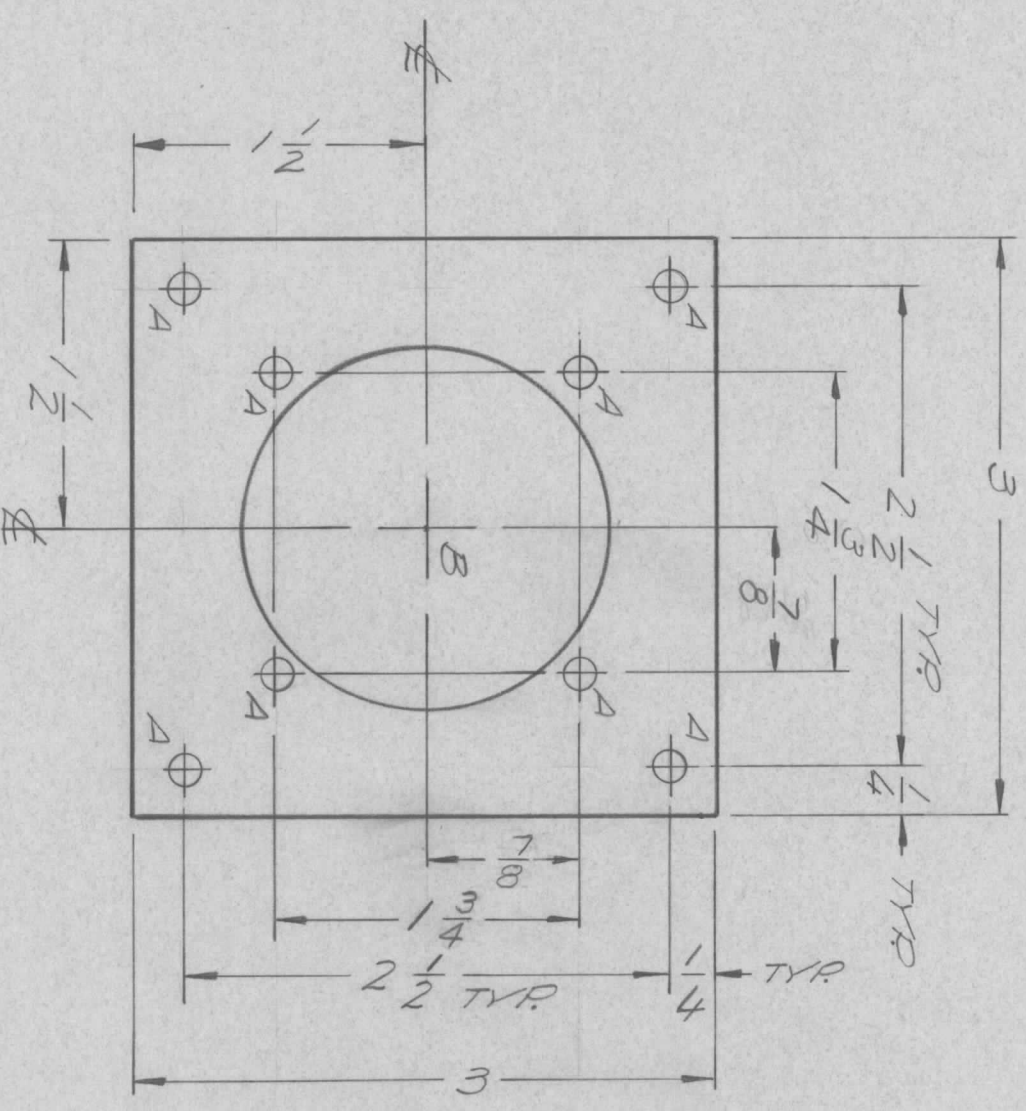
DECIMALS	.X ± .05	TOLS.	1/64
.XX ± .01		ANGLES	0°-30'
.XXX ± .005			
MATERIAL	.064 ALUM		
FINISH	5052 H32		
	S40L YEL IRIDITE		

FINAL APPROVAL	DATE	MECH. DES.	DATE	ELECT. DES.	DATE
<i>[Signature]</i>	20/2/70	<i>[Signature]</i>	20/2/70		
CHECKED	DATE	DRAWN	DATE		
<i>[Signature]</i>	10/5/70	<i>[Signature]</i>	10/5/70		

LIST OF MATERIAL			
REQ'D ITEM	PART NUMBER	DESCRIPTION	SYM.
2	1	NUT ROUND SWAGE TYPE	A
THE TECHNICAL MATERIEL CORP. MAMARONECK, NEW YORK			
BRACKET MFG. FILTER			
SIZE	CODE IDENT. NO.	DWG NO.	ISSUE
B	82679	MS 5676	Ø
SCALE	1:1	SHEET	OF

REVISIONS						
ZONE	LTR	DESCRIPTION	DATE	E.M.N. NO.	DRAFT	CHKD
	X	EXP RELEASE	7-8-70		GE	
	Ø	ORIGINAL RELEASE	10/21/70		(1)	

HOLE	DESCRIPTION	REQ
A	11/64 DIA.	8
B	2 1/16 DIA.	1



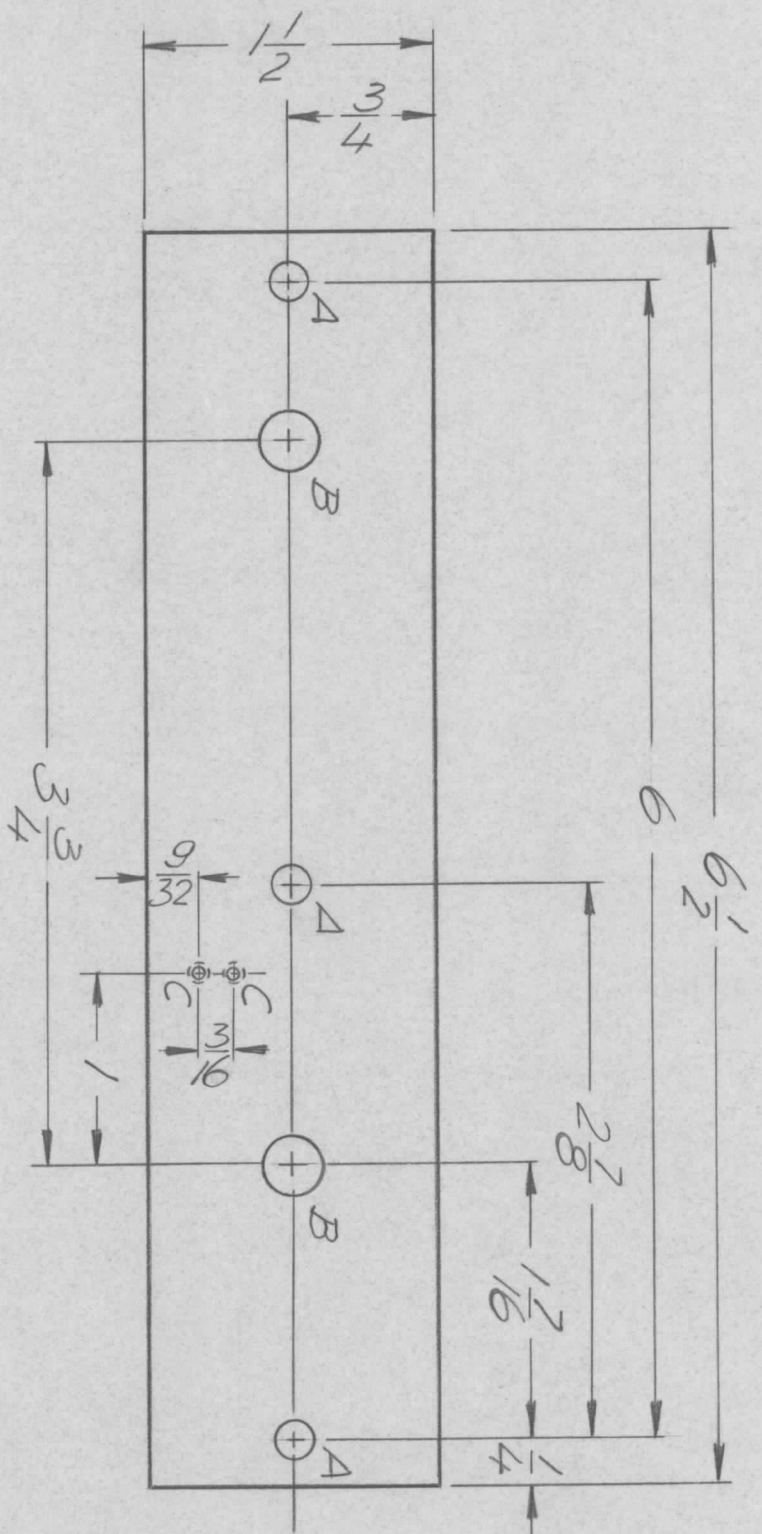
QTY / UNIT	1	MODEL USED ON	RCP-6	ASSY NO.	
APPLICATION		CODE			

**NOTICE TO PERSONS RECEIVING THIS DRAWING**  
 THE TECHNICAL MATERIEL CORPORATION claims proprietary right in the material disclosed hereon. This drawing is issued in confidence for engineering information only and may not be reproduced or used to manufacture anything shown hereon without permission from THE TECHNICAL MATERIEL CORPORATION to the user. This drawing is loaned for mutual assistance and is subject to recall at any time.

UNLESS OTHERWISE SPECIFIED DIMENSIONS ARE IN INCHES AND INCLUDE CHEMICALLY APPLIED OR PLATED FINISHES	FRACTIONS	1/64
DECIMALS	TOLS.	ANGLES
X ± .05		0° - 30°
.XX ± .01		
.XXX ± .005		
MATERIAL	064 ALUM.	
FINISH	S404	
	YEL. IRIDITE	

REQ'D ITEM	PART NUMBER	DESCRIPTION	SYM.
F. BUDETTI			
LIST OF MATERIAL			
THE TECHNICAL MATERIEL CORP.			
MAMARONECK, NEW YORK			
BRKT, CONV. MTG.			
SIZE	CODE IDENT. NO.	DWG NO.	ISSUE
B	82679	MS 5678	Ø
SCALE			SHEET OF

REVISIONS							
ZONE	LTR	DESCRIPTION	DATE	E.M.N.NO	DRAFT	CHKD	APPD
	X	EXP. RELEASE	8/28/70				
	Ø	ORIGINAL RELEASE	10/26/70				



HOLE LEGEND

A - 13/64 DIA. (3 REQ.)

B - 5/16 DIA. (2 REQ.)

C - DRILL & TAP  
0256 (THRU) (2 REQ.)

REQ'D ITEM	PART NUMBER	DESCRIPTION	SYM.
F. BUDETT			
LIST OF MATERIAL			

UNLESS OTHERWISE SPECIFIED DIMENSIONS ARE IN INCHES AND INCLUDE CHEMICALLY APPLIED OR PLATED FINISHES	DECIMALS	FRACTIONS	TOLS.	ANGLES
	.X ± .05	1/64		0° - 30'
	.XX ± .01			
	.XXX ± .005			

QTY / UNIT	MODEL USED ON	ASS'Y NO.
1	TLAM - 1K	AS 147
APPLICATION		
	CODE	

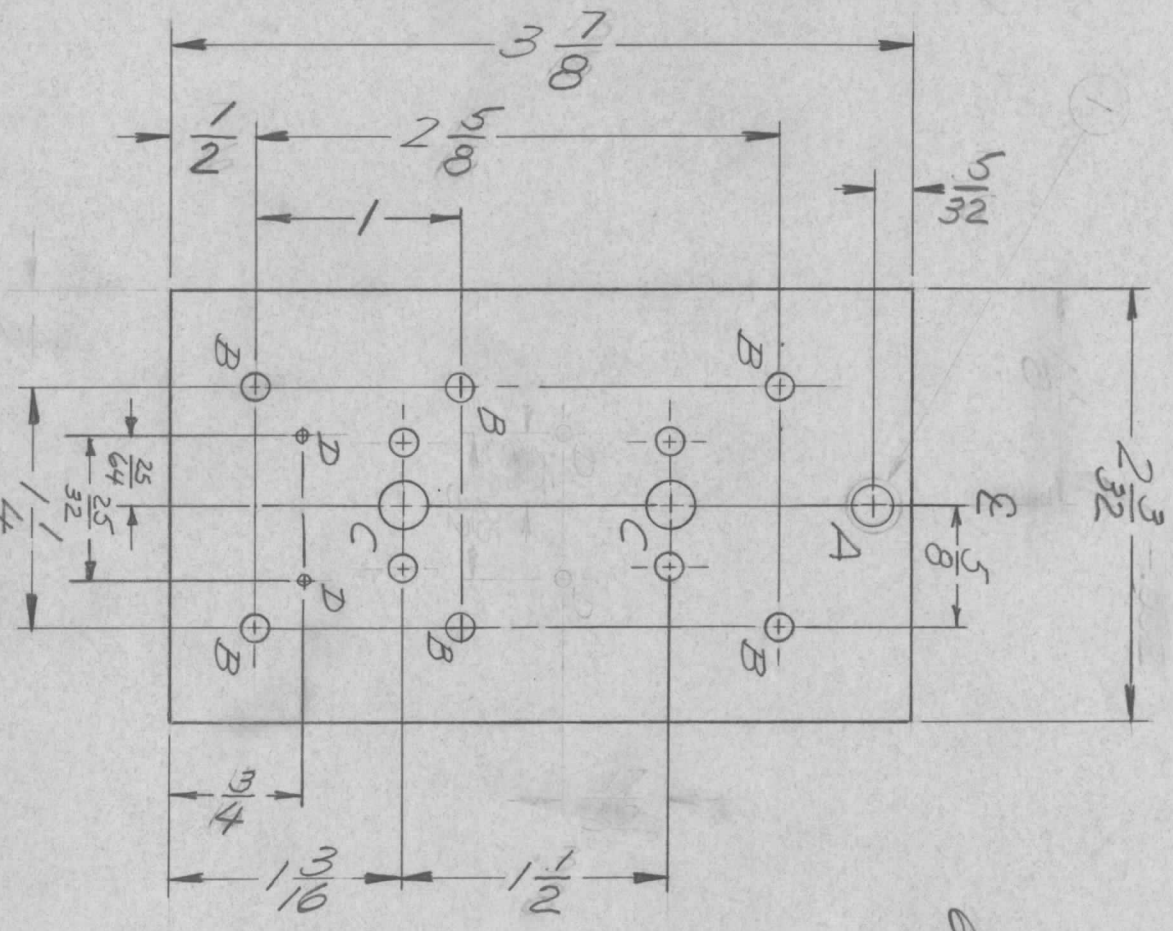
FINISH	MATERIAL	DRAWN	DATE	SIZE	CODE IDENT. NO.	DWG NO.	ISSUE
2024 - T3	1/8 ALUM	F. VITALI	8/28/70	B	82679	MS 5680	Ø
SCALE 1:1							
SHEET OF							

NOTICE TO PERSONS RECEIVING THIS DRAWING

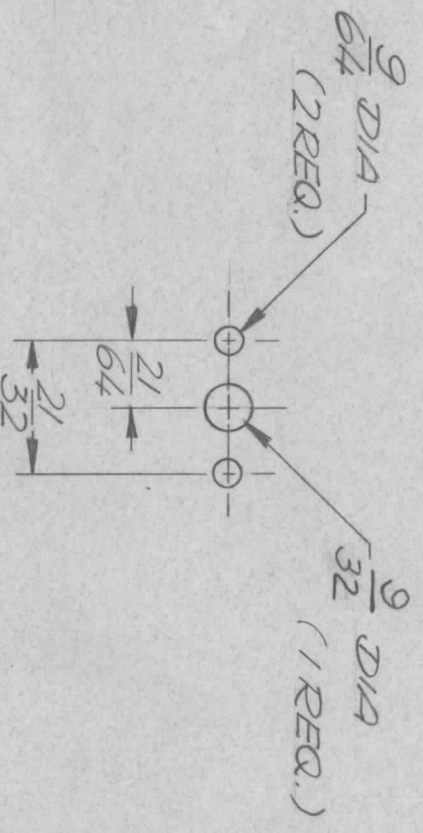
THE TECHNICAL MATERIEL CORPORATION claims proprietary right in the material disclosed hereon. This drawing is issued in confidence for engineering information only and may not be reproduced or used to manufacture anything shown hereon without permission from THE TECHNICAL MATERIEL CORPORATION to the user. This drawing is loaned for mutual assistance and is subject to recall at any time.



REVISIONS							
ZONE	LTR	DESCRIPTION	DATE	E.M.N. NO.	DRAFT	CHKD	APPD
X		EXP. RELEASE	7/6/70				
Ø		ORIGINAL RELEASE	7/30/70				



FRONT VIEW SHOWN



"C" DETAIL

HOLE LEGEND

- A - 7/32 DIA. (1 REQ.)
- B - 9/64 DIA. (6 REQ.)
- C - SEE DETAIL (2 REQ.)
- D - .071 DIA. (2 REQ.)

- FINISH NOTES:**
1. S404 - IRIDITE 14-2 AL-COAT.
  2. S114 - ZINC CHROMATE PRIMER
  3. S115 - SMOOTH GRAY ENAMEL
- PRIME AND PAINT PER CUSTOMER'S SPECIFICATIONS

UNLESS OTHERWISE SPECIFIED:  
REMOVE ALL BURRS AND SHARP EDGES.  
MOUNT INSERTS AFTER FINISHING.

QTY / UNIT	MODEL USED ON	ASSY NO.
1	LPFB-2	AX5126
APPLICATION		
CODE		

UNLESS OTHERWISE SPECIFIED DIMENSIONS ARE IN INCHES AND INCLUDE CHEMICALLY APPLIED OR PLATED FINISHES	FRACTIONS	ANGLES
DECIMALS	1/64	0° - 30'
X ± .05		
.XX ± .01		
.XXX ± .005		
MATERIAL	FINISH	
1/8 ALUM.	5052-H32	
SEE NOTES		

REQ'D	ITEM	PART NUMBER	DATE
FINAL APPROVAL			
MECH. DES.		DATE	
ALP.		2/20/70	
ELECT. DES.		DATE	
		DATE	
CHECKED		DATE	
DRAWN		DATE	

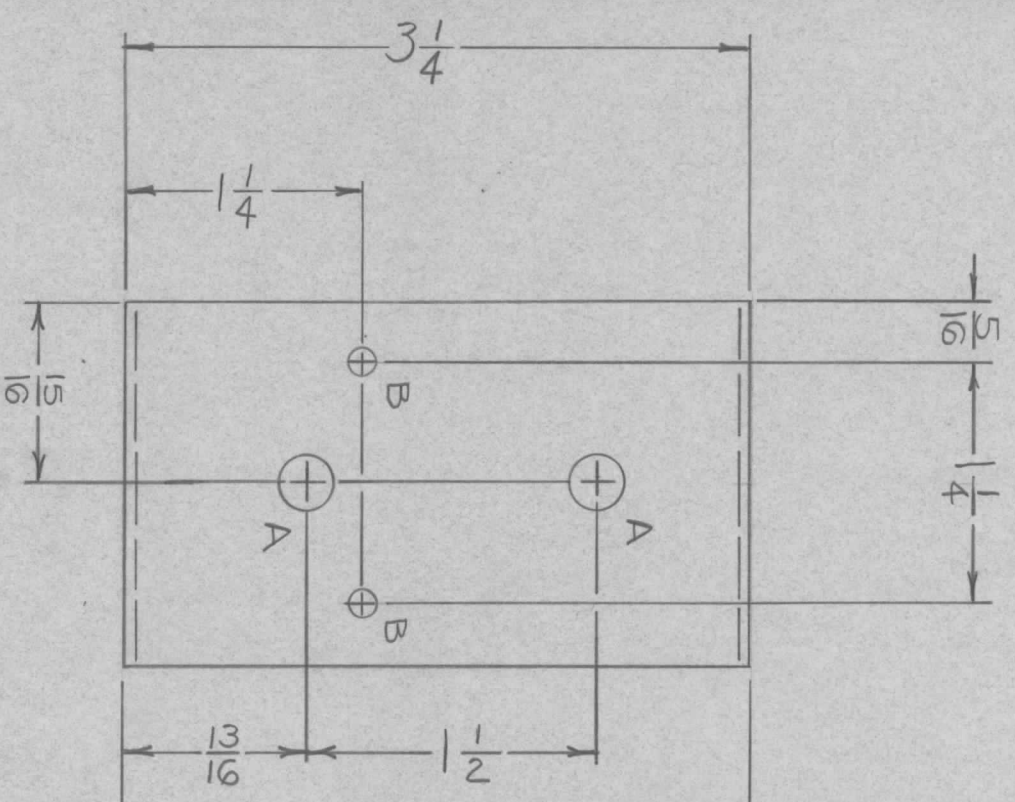
LIST OF MATERIAL

THE TECHNICAL MATERIEL CORP.			
MAMARONECK, NEW YORK			
SIZE	CODE IDENT. NO.	DWG NO.	ISSUE
B	82679	M55692	Ø
SCALE	1:1	SHEET	OF

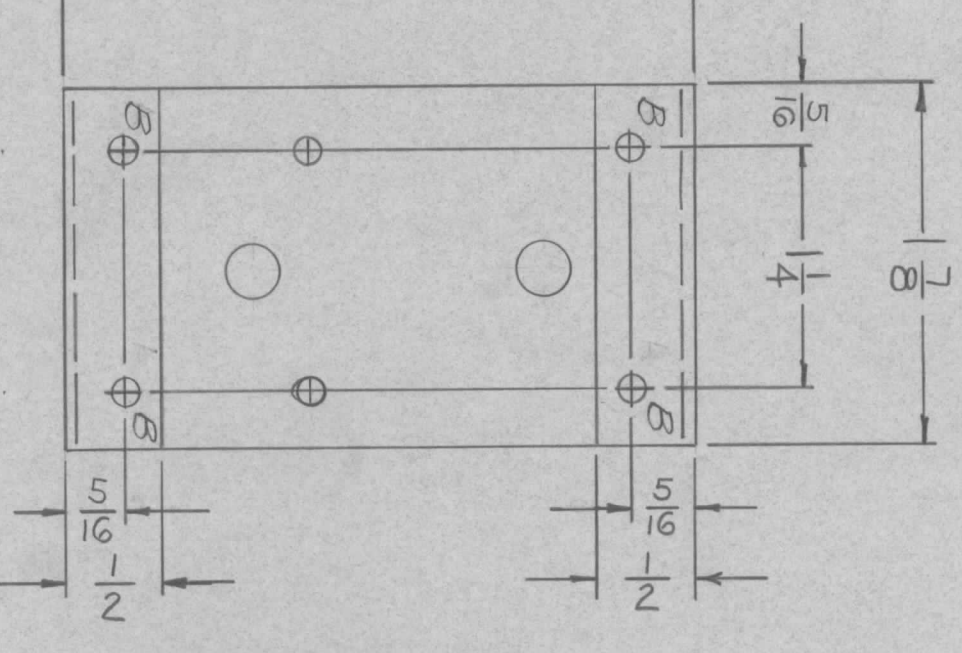
PANEL, FRONT, MODULE

NOTICE TO PERSONS RECEIVING THIS DRAWING  
THE TECHNICAL MATERIEL CORPORATION claims proprietary right in the material disclosed hereon. This drawing is issued in confidence for engineering information only and may not be reproduced or used to manufacture anything shown hereon without permission from THE TECHNICAL MATERIEL CORPORATION to the user. This drawing is loaned for mutual assistance and is subject to recall at any time.

REVISIONS							
ZONE	LTR	DESCRIPTION	DATE	E.M.N. NO	DRAFT	CHKD	APPD
Ø		ORIGINAL RELEASE	11/30/70				



HOLE	DESCRIPTION	REQ.
A	17/64 DIA.	2
B	9/64 DIA.	6



REQ'D ITEM	PART NUMBER	DESCRIPTION	SYM.
F. BUDETTI			

LIST OF MATERIAL

**THE TECHNICAL MATERIEL CORP.**  
MAMARONECK, NEW YORK

**CHASSIS, MODULE**

QTY / UNIT	1	MODEL USED ON	AX5126
APPLICATION		ASS'Y NO.	
CODE			

UNLESS OTHERWISE SPECIFIED DIMENSIONS ARE IN INCHES AND INCLUDE CHEMICALLY APPLIED OR PLATED FINISHES	FRACTIONS	1/64
DECIMALS	TOLS.	ANGLES
.X ± .05		0° - 30'
.XX ± .01		
.XXX ± .005		

**NOTICE TO PERSONS RECEIVING THIS DRAWING**

THE TECHNICAL MATERIEL CORPORATION claims proprietary right in the material disclosed hereon. This drawing is issued in confidence for engineering information only and may not be reproduced or used to manufacture anything shown hereon without permission from THE TECHNICAL MATERIEL CORPORATION to the user. This drawing is loaned for mutual assistance and is subject to recall at any time.

MATERIAL ALUM. 5052-H32

FINISH S404-YEL. IRIDITE

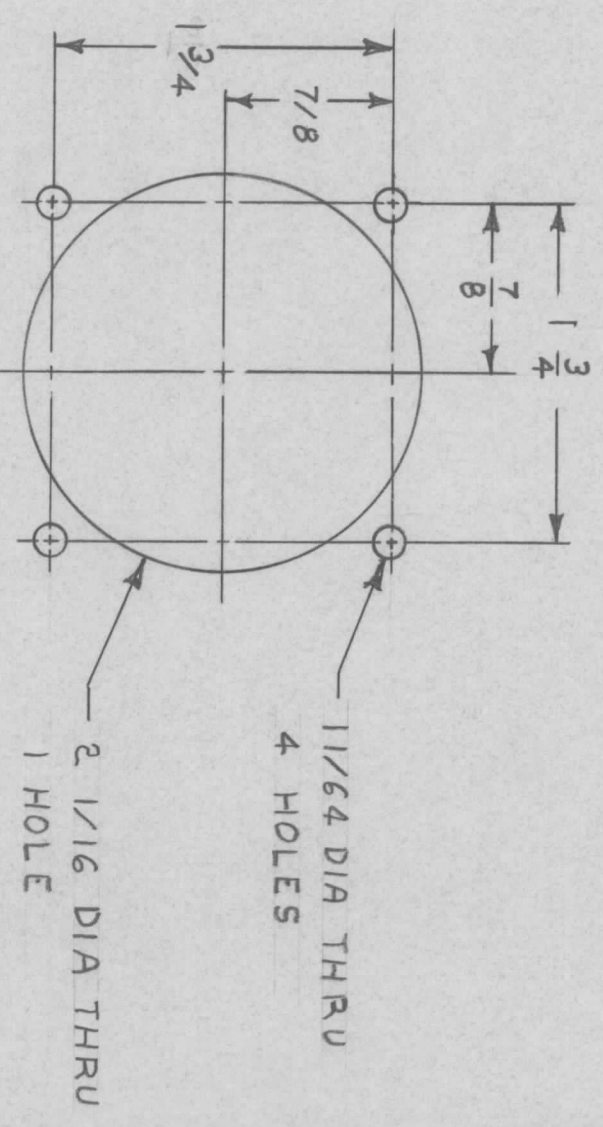
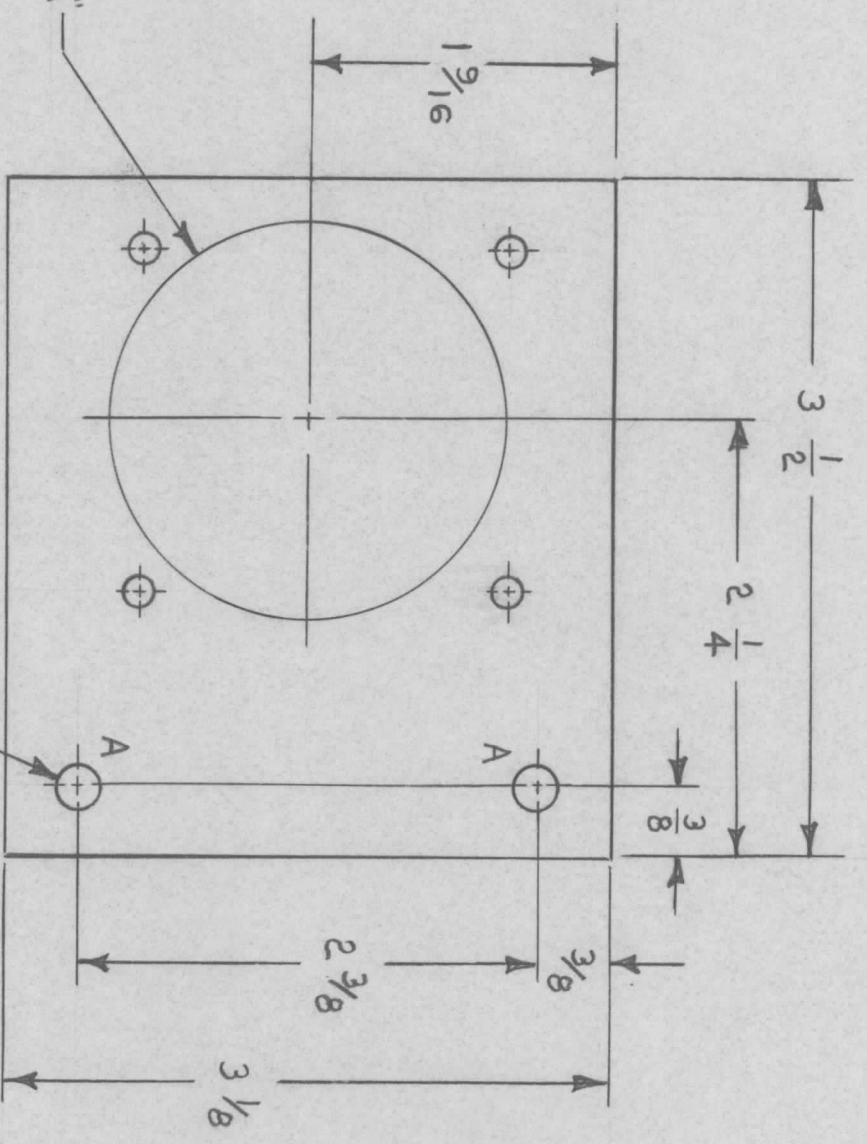
FINAL APPROVAL	DATE
MECH. DES. ALP.	22/2/70
ELECT. DES.	DATE
CHECKED	DATE
DRAWN A. PETROCCA	DATE 10-70

SIZE	CODE IDENT. NO.	DWG NO.	ISSUE
B	82679	M55693	Ø
SCALE	SHEET		OF





REVISIONS							
ZONE	LTR	DESCRIPTION	DATE	E.M.N.NO	DRAFT	CHKD	APPD
Ø		ORIGINAL RELEASE	11/30/70		Ø		



15/64 DIA THRU 2 HOLES "A"

"A" DETAIL

SEE DETAIL "A"

QTY / UNIT	1	L P F SYSTEM	MODEL USED ON	ASS'Y NO.
APPLICATION				
CODE				

**NOTICE TO PERSONS RECEIVING THIS DRAWING**  
 THE TECHNICAL MATERIEL CORPORATION claims proprietary right in the material disclosed hereon. This drawing is issued in confidence for engineering information only and may not be reproduced or used to manufacture anything shown hereon without permission from THE TECHNICAL MATERIEL CORPORATION to the user. This drawing is loaned for mutual assistance and is subject to recall at any time.

UNLESS OTHERWISE SPECIFIED DIMENSIONS ARE IN INCHES AND INCLUDE CHEMICALLY APPLIED OR PLATED FINISHES	
DECIMALS	FRACTIONS
X ± .05	1/64
XX ± .01	TOLS.
.XXX ± .005	ANGLES
	0° - 30'
MATERIAL 1/8 ALUM	
5052-H32	
FINISH	
5404 YEL. IRIDITE	

REQ'D ITEM	PART NUMBER	DESCRIPTION	SYM.
LIST OF MATERIAL			
THE TECHNICAL MATERIEL CORP.			
MAMARONECK, NEW YORK			

FINAL APPROVAL	DATE
MECH. DES.	DATE
ELECT. DES.	DATE
CHECKED	DATE
DRAWN	DATE

SIZE	CODE IDENT. NO.	DWG NO.	ISSUE
B	82679	M55698	Ø
SCALE 1/1			
SHEET 1	OF 1		