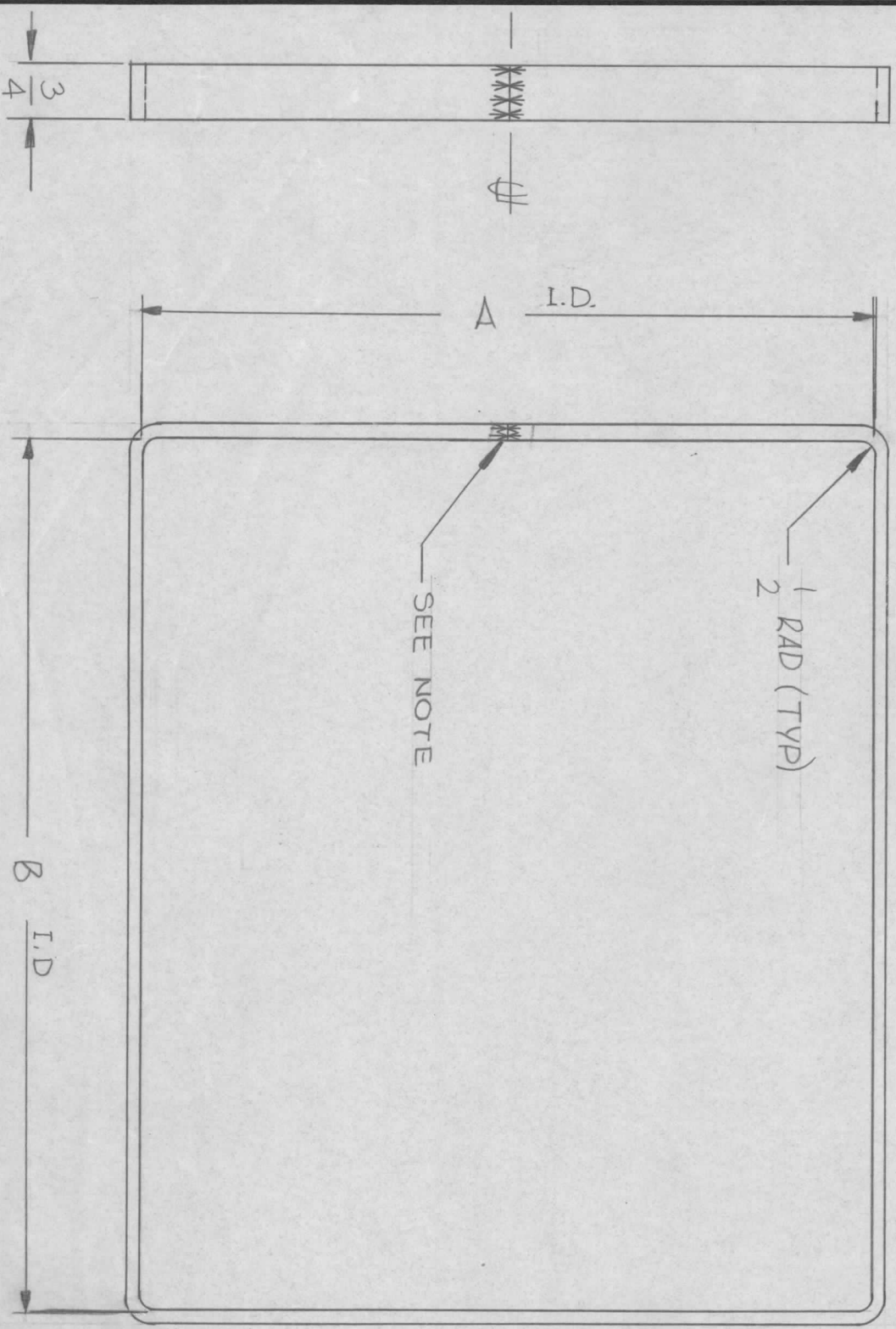


TMC PART/No.	A $\pm \frac{1}{64}$	B $\pm \frac{1}{64}$
MS6001-1	12 3/16	12 3/16
MS6001-2	12 2/32	12 2/32



REVISIONS		DATE	E.M.N. NO.	DRAFT	CHKD	APPD
SYM	DESCRIPTION					
Ø	ORIGINAL RELEASE FOR PRODUCTION	8/29/67	Ø	RG	AD	

~ NOTE ~
SEAM WELD AND GRIND SMOOTH

REF: PX641

Q'TY./UNIT	1 EACH	MODEL USED ON	TRC20K	ASS'Y. NO.	A2239
SCALE		CODE			

THE CONTENTS OF THIS DRAWING ARE THE EXCLUSIVE PROPERTY OF THE TECHNICAL MATERIEL CORP. ITS UNAUTHORIZED USE OR REPRODUCTION IN WHOLE OR IN PART IS STRICTLY FORBIDDEN.

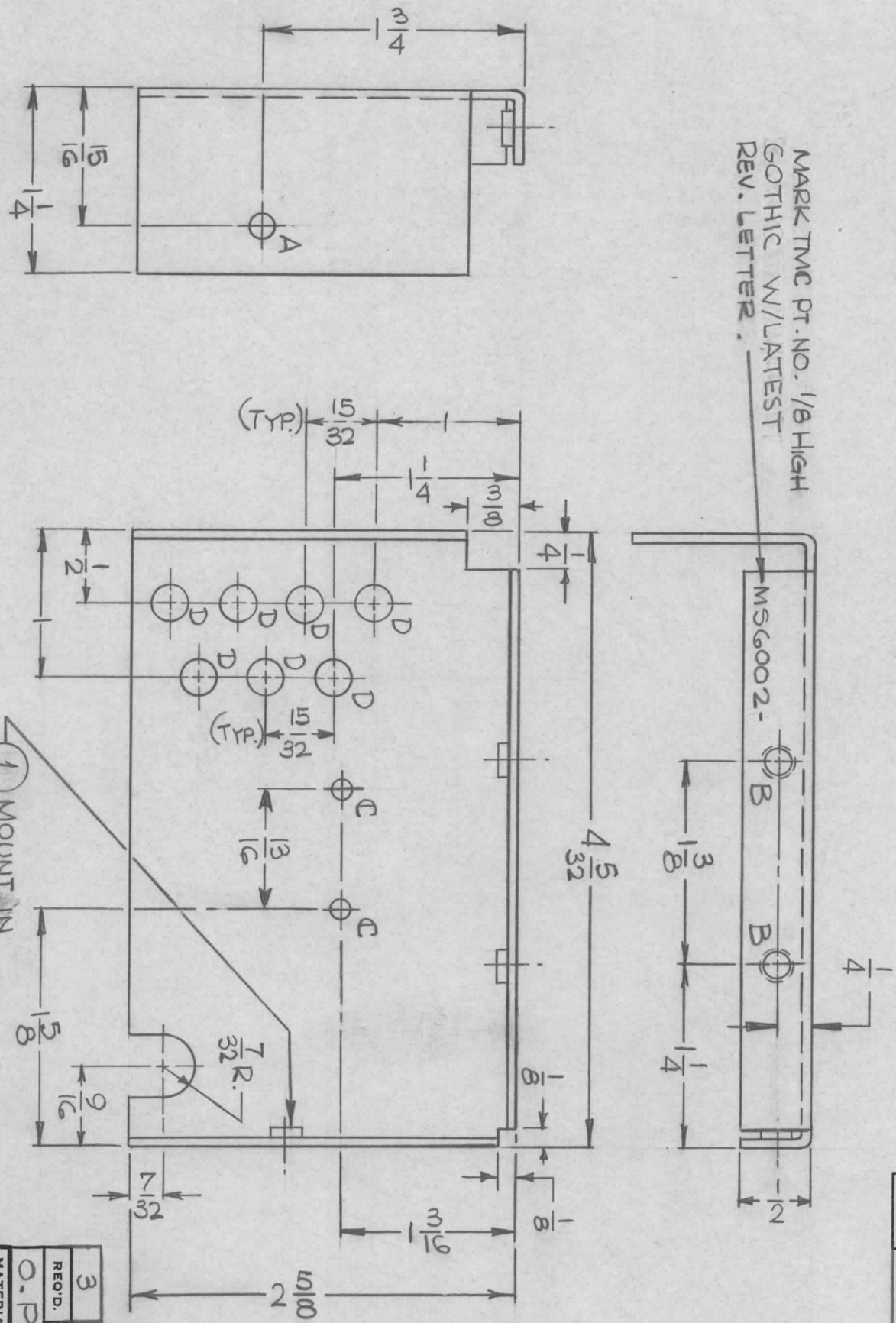
REQ'D.	ITEM	PART NUMBER	DESCRIPTION	SYMBOL
			LIST OF MATERIAL	

MATERIAL	3/16 THICK ALUMINUM, 1100-H14	TITLE	RING PLASTIC CASE
FINISH	NONE		

UNLESS OTHERWISE SPECIFIED DIMENSIONS ARE IN INCHES AND INCLUDE CHEMICALLY APPLIED OR PLATED FINISHES	DRAWN	DATE	FINAL APPROVAL	DATE
DECIMALS .X ± .05 .XX ± .01 .XXX ± .005	CHECKED	DATE		
TOLERANCES	ELECT. DES.	DATE		
FRACTIONS ± 1/64 ± 1/32 ± 1/64 ANGLES ± 0° 30'	MECH. DES.	DATE		
			MS6001	8-30-67

HOLE	DESCRIPTION	REQ'D
A	11/64 DIA.	1
B	.191 - .194 DIA.	3
C	9/64 DIA.	2
D	1/4 DIA.	7

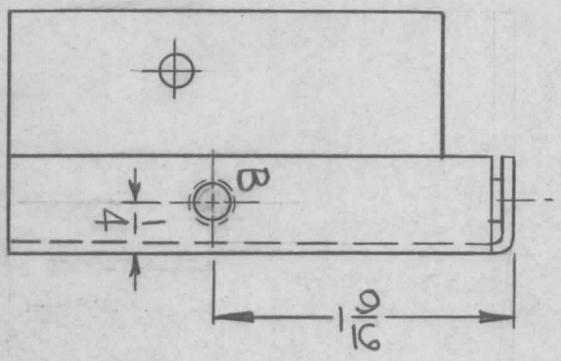
MARK TMC PT. NO. 1/8 HIGH
GOTHIC W/LATEST
REV. LETTER



- UNLESS OTHERWISE SPECIFIED:
1. USE MATERIAL THICKNESS FOR MAXIMUM RADIUS ON ALL BENDS
 2. ALL ANGULAR BENDS 90 DEGREES
 3. REMOVE ALL BURRS AND SHARP EDGES
 4. MOUNT INSERTS AFTER FINISHING

NOTES

MS6002		REVISIONS				
SYM	DESCRIPTION	DATE	E.M.N. NO.	DRAFT	CHKD	APPD
X	EXPERIMENTAL RELEASE	10/12/66	X	HLA	RS	
Ø	ORIGINAL RELEASE FOR PRODUCTION	11/10/66	Ø	RME		file



REF: LD2179

NUT, PLAIN, SPLINE

LIST OF MATERIAL

REQ'D.	ITEM	PART NUMBER	DESCRIPTION	SYMBOL
3	1	NT129-632-4	NUT, PLAIN, SPLINE	B

MATERIAL
0.063 THK.
ALUMINUM - 5052-H32

FINISH
S404 - YEL. IRIDITE

TITLE
THE TECHNICAL MATERIEL CORP.
MAMARONECK, NEW YORK

SHIELD, IFO

QTY./UNIT	1	GPR-92B	MODEL USED ON	ASSY. NO.
SCALE	1:1			

UNLESS OTHERWISE SPECIFIED
DIMENSIONS ARE IN INCHES AND INCLUDE
CHEMICALLY APPLIED OR PLATED FINISHES

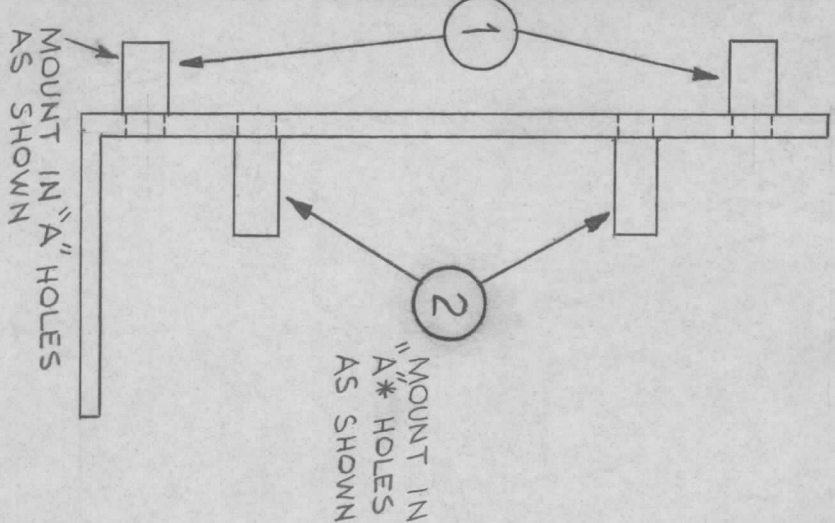
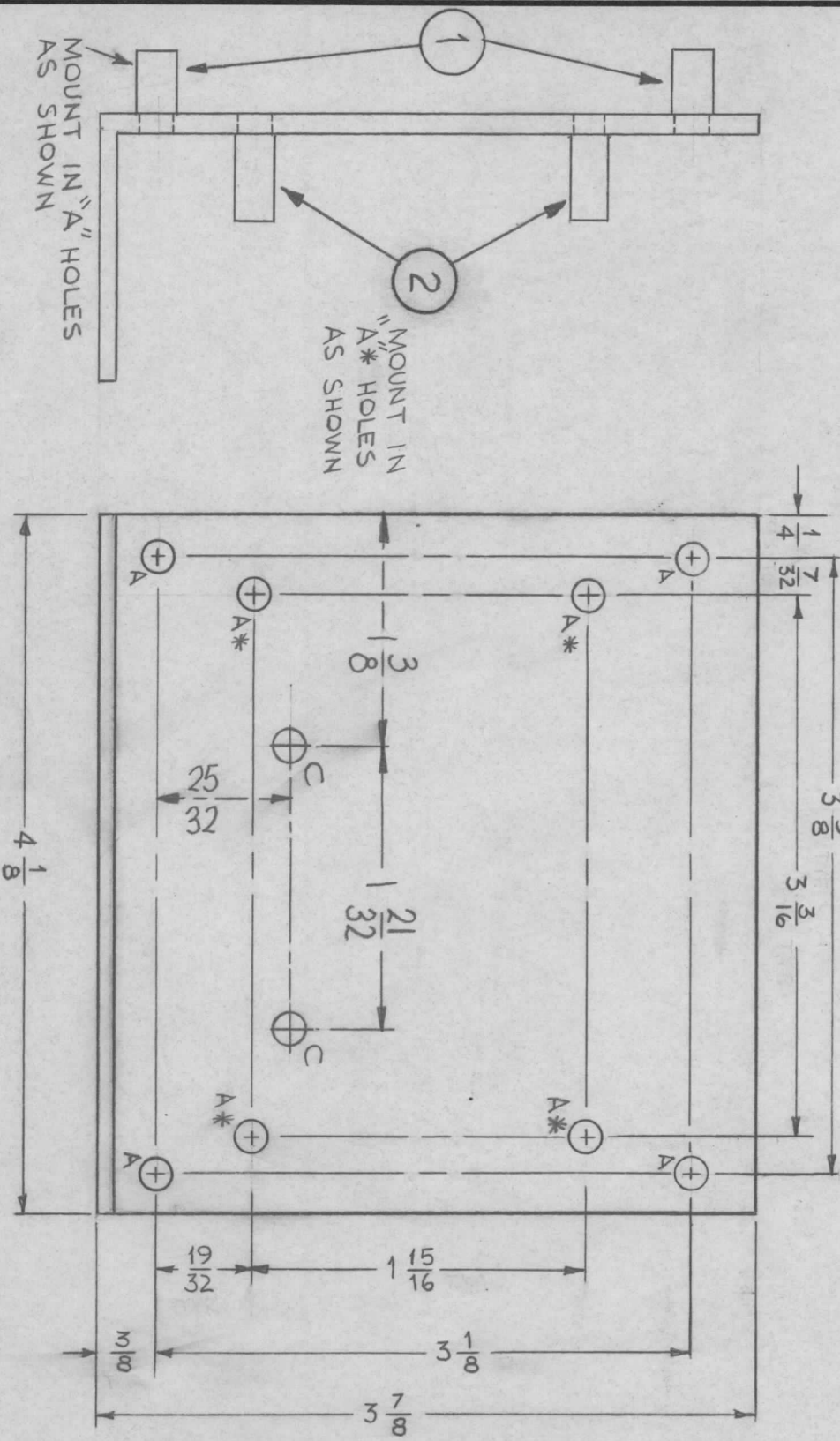
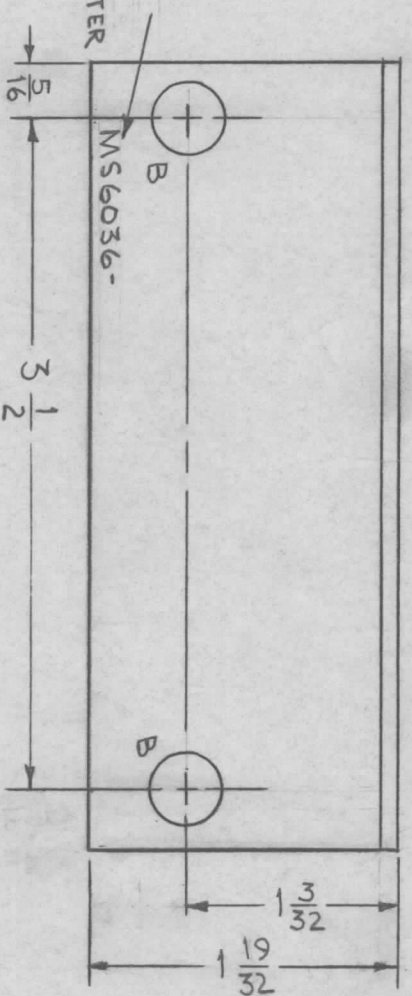
DECIMALS
X ± .05
.XX ± .01
.XXX ± .005

TOLERANCES

FRACTIONS
± 1/64
ANGLES
± 9° 30'

DRAWN	H. Austin	DATE	10-12-66	FINAL APPROVAL		DATE	
CHECKED	RS	DATE	10/27/66			DATE	11/6/66
ELECT. DES.		DATE	10/27/66			DATE	
MECH. DES.		DATE				DATE	
				MS6002			

MARK TMC PART NO.
1/8 HIGH GOTHIC
W/LATEST REVISION LETTER



- UNLESS OTHERWISE SPECIFIED:
1. USE MATERIAL THICKNESS FOR MAXIMUM RADIUS ON ALL BENDS
 2. ALL ANGULAR BENDS 90 DEGREES
 3. REMOVE ALL BURRS AND SHARP EDGES
 4. MOUNT INSERTS AFTER FINISHING

NOTES

MS6036 A

SYMBOL		DESCRIPTION		DATE	E.M.N. NO.	DRAFT	CHKD	APPD
X	EXPERIMENTAL RELEASE			11/21/66	X	RME		
Ø	ORIGINAL RELEASE FOR PRODUCTION			4-3-67	Ø	CV		
A	2C HOLES, SMEC-1/SMEC-1 ADDED, SMEC-1 DEL.			6-22-67	18291	WFD		

HOLE	DESCRIPTION	REQ.
A	.189 DIA.	8
B	3/8 DIA.	2
C	3/16 DIA.	2

A = MOUNT ITEM 1.
A* = MOUNT ITEM 2.

REQD.	ITEM	PART NUMBER	DESCRIPTION	SYMBOL
4	2	TE 108-19	NUT, PLAIN, CLINCH	A*
4	1	TE 108-11	NUT, PLAIN, CLINCH	A

MATERIAL		TITLE	
.081 THK. ALUMINUM	5052-H32	BRACKET, MOUNTING, PCB BOARD	
FINISH	S 404 YELLOW IRIDITE	THE TECHNICAL MATERIEL CORP. MAMARONECK, NEW YORK	

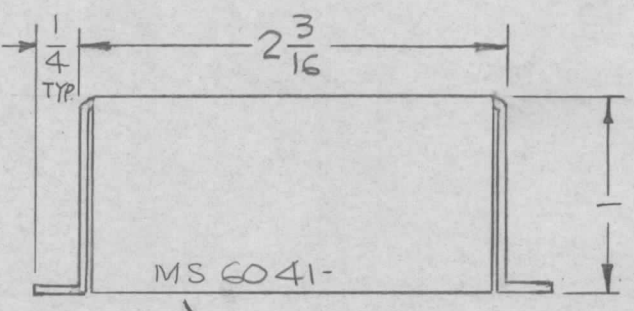
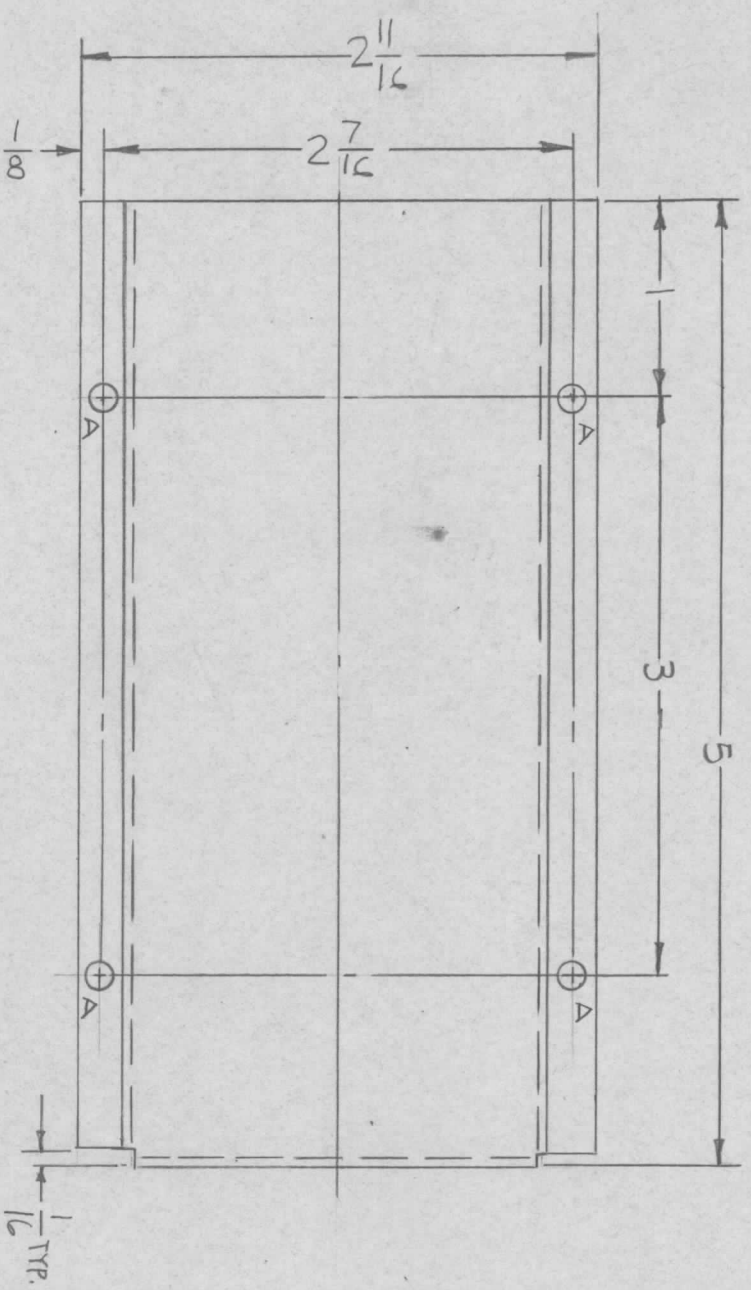
UNLESS OTHERWISE SPECIFIED		DIMENSIONS ARE IN INCHES AND INCLUDE CHEMICALLY APPLIED OR PLATED FINISHES	
DECIMALS	X ± .05 .XX ± .01 .XXX ± .005	TOLERANCES	FRACTIONS ± 1/64 ANGLES ± 0° 30'

Q'TY./UNIT	MODEL USED ON	ASS'Y. NO.
	SMEC-1	
SCALE	CODE	

THE CONTENTS OF THIS DRAWING ARE THE EXCLUSIVE PROPERTY OF THE TECHNICAL MATERIEL CORP. ITS UNAUTHORIZED USE OR REPRODUCTION IN WHOLE OR IN PART IS STRICTLY FORBIDDEN.

REVISIONS		DATE	E.M.N. NO.	DRAFT	CHKD	APPD
X	EXP. RELEASE	12-7-64				
X1	5520 ADDED, 5423 DEL.	12-8-64				
Ø	ORIG RELEASE FOR PRODUCTION	5-25-67		RG		

MS6041 Ø



HOLES:
A-9/64 DIA. (4REQ.)

MARK TMC P/N
1/8 HIGH GOTHIC
W/LATEST REV.
LETTER.

NOTE:
APPLY 5520 (FINISH) ONLY OUTSIDE &
EDGES OF BOX.
UNLESS OTHERWISE SPECIFIED:

1. USE MATERIAL THICKNESS FOR MAXIMUM RADIUS ON ALL BENDS
2. ALL ANGULAR BENDS 90 DEGREES
3. REMOVE ALL BURRS AND SHARP EDGES

NOTES

QTY./UNIT	1	MODEL USED ON	LPA-10K	ASSY. NO.	
SCALE	1/4"=1"	CODE	A		

REQ'D.	ITEM	PART NUMBER	DESCRIPTION	SYMBOL
	F. BUDETTI		LIST OF MATERIAL	
	MATERIAL		THE TECHNICAL MATERIEL CORP.	
			MAMARONECK, NEW YORK	
			TITLE	
			SHIELD, BOX	
			DRAWN	DATE
			CHECKED	DATE
			ELECT. DES.	DATE
			MECH. DES.	DATE
			FINAL APPROVAL	DATE
			MS6041	SHEET
			REV. LTR.	

UNLESS OTHERWISE SPECIFIED
DIMENSIONS ARE IN INCHES AND INCLUDE
CHEMICALLY APPLIED OR PLATED FINISHES

DECIMALS
.X ± .05
.XX ± .01
.XXX ± .005

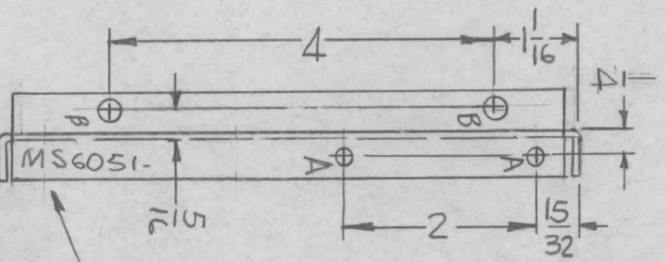
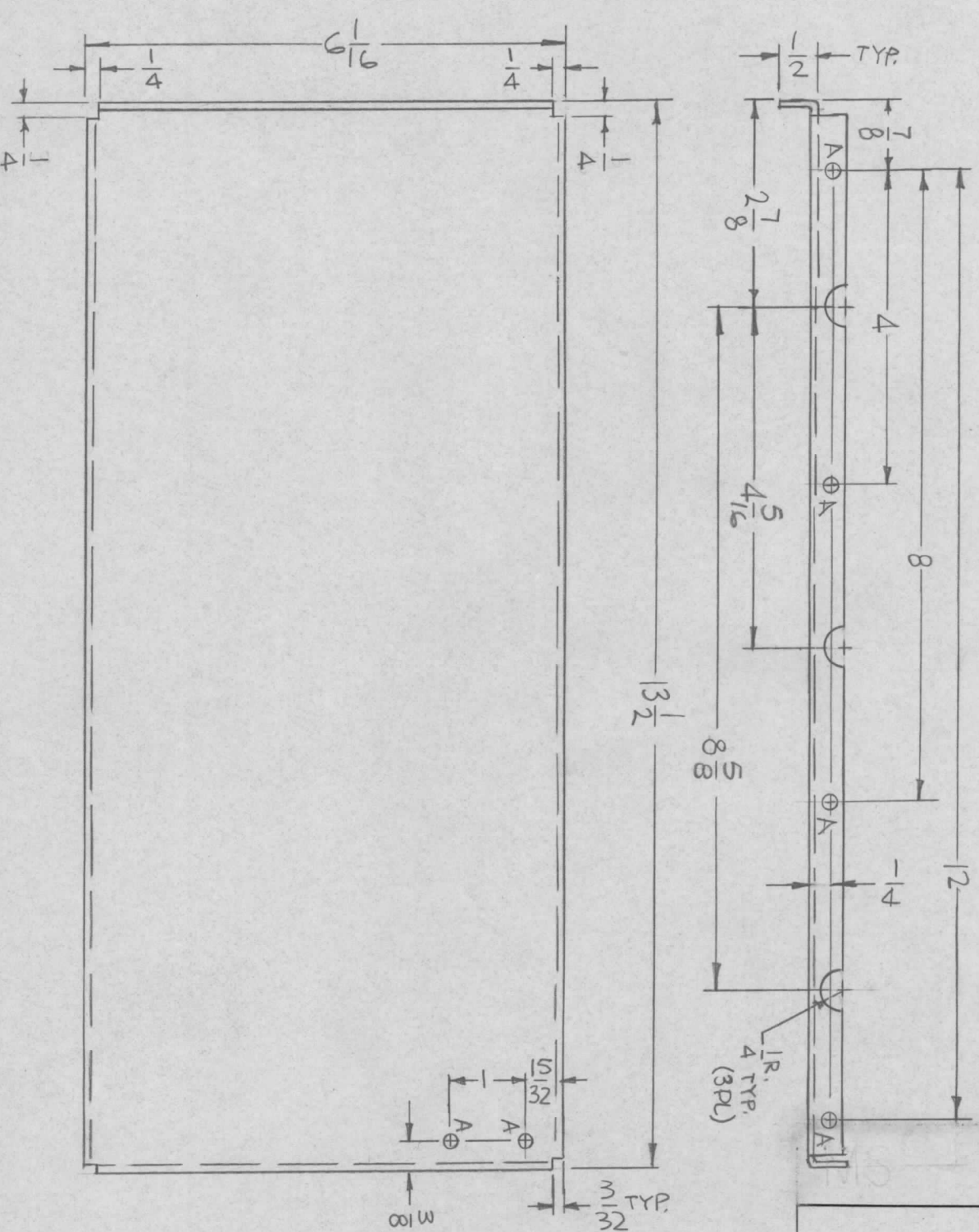
TOLERANCES

FRACTIONS
± 1/64
ANGLES
± 0° 30'

UNLESS OTHERWISE SPECIFIED:
1. USE MATERIAL THICKNESS FOR MAXIMUM RADIUS ON ALL BENDS
2. ALL ANGULAR BENDS 90 DEGREES
3. REMOVE ALL BURRS AND SHARP EDGES

REVISIONS

SYM	DESCRIPTION	DATE	E.M.N. NO.	DRAFT	CHKD	APPD
X	EXP. RELEASE	12-7-66				
Ø	ORIGINAL RELEASE FOR PRODUCTION	1/11/67			CV	



HOLES
 A - 11/64 DIA. (8 REA.)
 B - 13/64 DIA. (2 REA.)

MARK TMC P/N
 HIGH GOTHC
 W/LATEST REV.
 LETTER,

MS 6051-1 AS SHOWN
 MS 6051-2 OPP. HAND

UNLESS OTHERWISE SPECIFIED:

1. USE MATERIAL THICKNESS FOR MAXIMUM RADIUS ON ALL BENDS
2. ALL ANGULAR BENDS 90 DEGREES
3. REMOVE ALL BURRS AND SHARP EDGES

NOTES

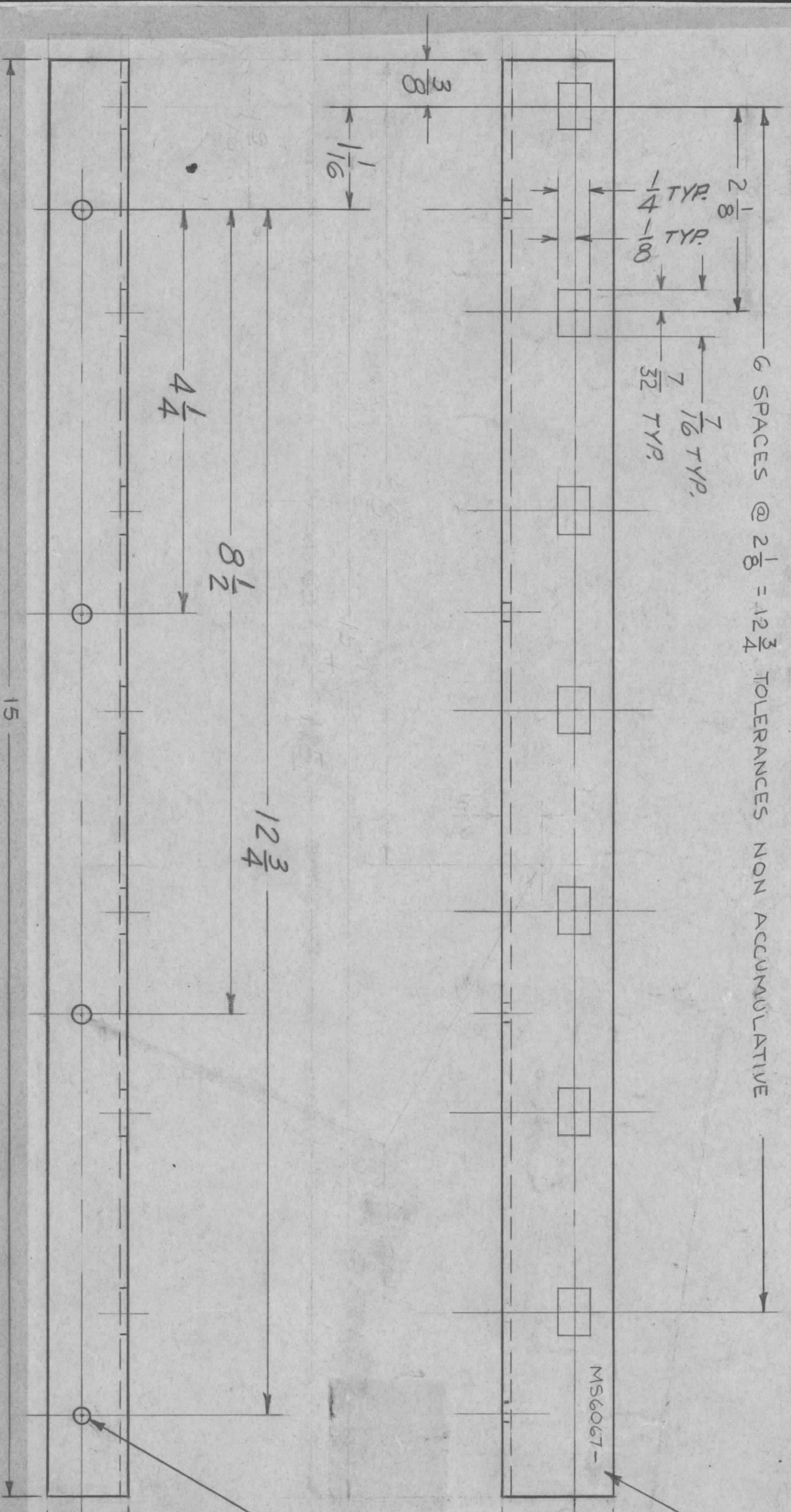
QTY./UNIT	1EA	MODEL USED ON	TCSA-1	ASSY. NO.	AX632
SCALE	1:2	CODE	A		

REQ'D.	ITEM	PART NUMBER	DESCRIPTION	SYMBOL
	F. BUDETTI		LIST OF MATERIAL	
	MATERIAL		THE TECHNICAL MATERIEL CORP.	
			MAMARONECK, NEW YORK	
	FINISH		TITLE	
	S404 YEL. IRIDITE		PLATE, SIDE, LEFT & RIGHT	

TMC PART NO.	DESCRIPTION	REF "LD"
MS 6067-1	AS SHOWN (TOP)	NONE
MS 6067-2	OPPOSITE HAND (BOTTOM)	LD2218

FOR AUTOMATION

REVISIONS		DESCRIPTION	DATE	E.M.N. NO.	DRAFT
X	ZONE	EXPERIMENTAL RELEASE	1-17-67	X	RME
X	LTR	REMOVED HFSR-4	11-10-67		RME
Ø		ORIGINAL RELEASE	5/9/73		CS



MARK TMC PART NO. 1/8 HIGH GOTHIC W/LATEST REVISION LETTER. (REFER TO CHART)

11/64 DIA. (4 HOLES)

AUTO FOR

REF: LD 2218

UNLESS OTHERWISE SPECIFIED:

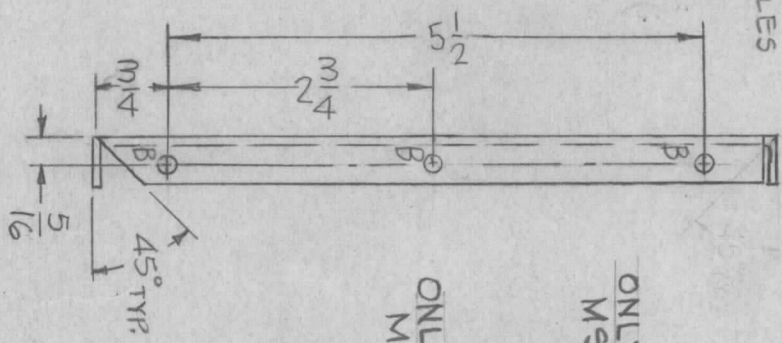
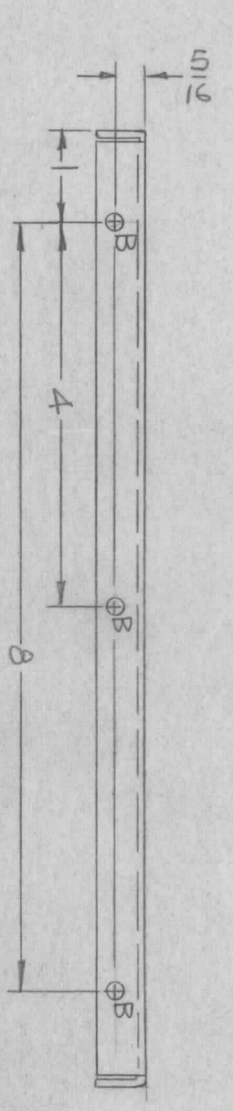
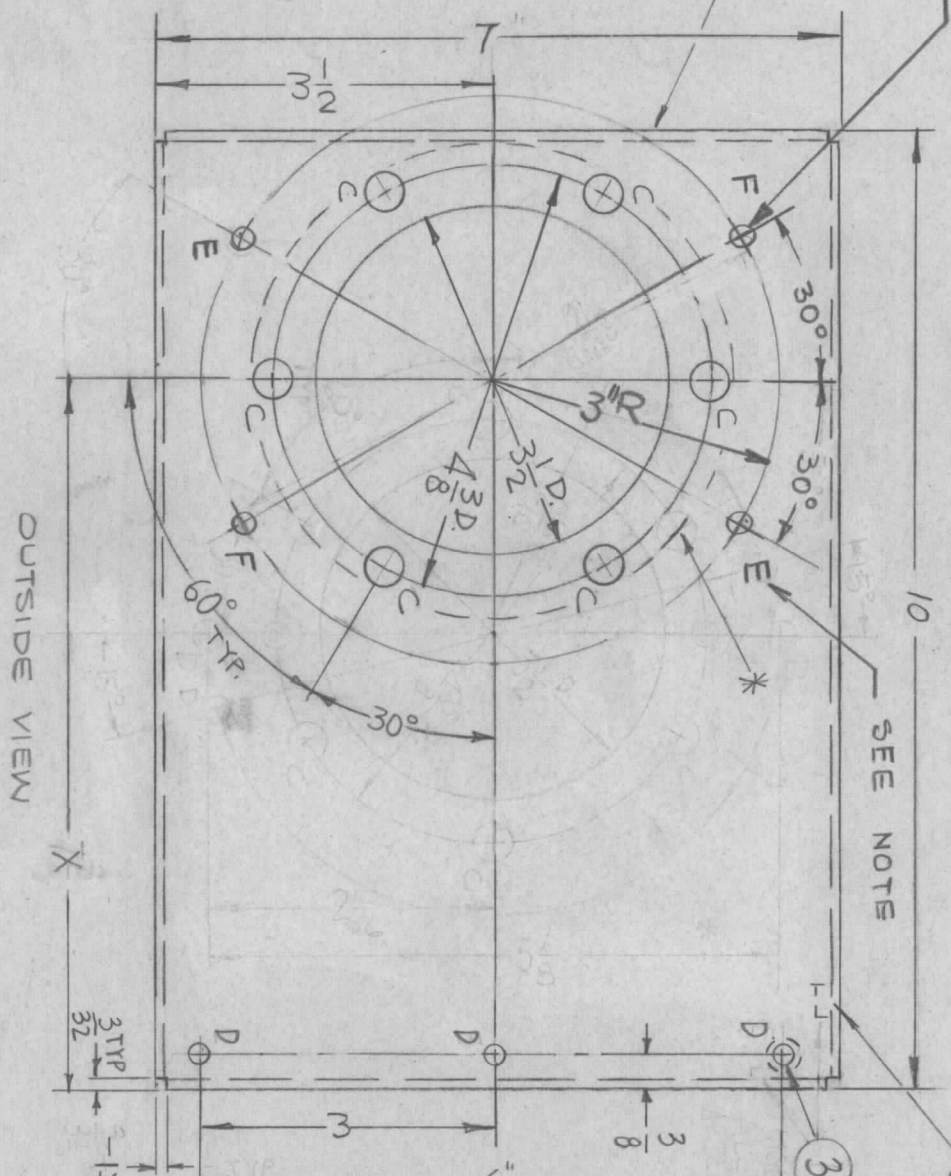
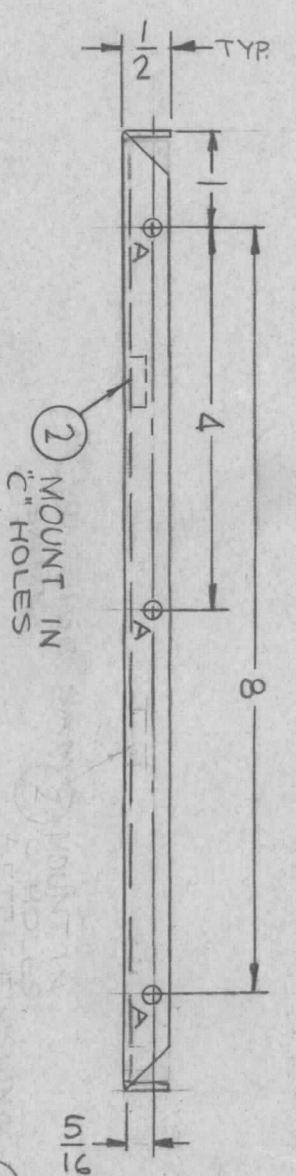
1. USE MATERIAL THICKNESS FOR MAXIMUM RADIUS ON ALL BENDS
2. ALL ANGULAR BENDS 90 DEGREES
3. REMOVE ALL BURRS AND SHARP EDGES

EA.	MAX-()	BMA 105
EA.	VOX-7	BMA 114
QTY / UNIT	MODEL USED ON	ASS'Y NO.
S401-451	APPLICATION	

DECIMALS	FRACTIONS
X ± .05	1/64
.XX ± .01	ANGLES
.XXX ± .005	0° .30'
MATERIAL	
.064 THK. ALUMINUM	
FINISH	
S404 YEL. IRIDITE	

REQ'D ITEM	PART NUMBER	DESCRIPTION	SYM.
Ø POSE		LIST OF MATERIAL	
FINAL APPROVAL	DATE	THE TECHNICAL MATERIEL CORP.	
MECH. DES.	DATE	MAMARONECK, NEW YORK	
ELECT. DES.	DATE	HOLDER, CONNECTOR,	
CHECKED	DATE	TOP & BOTTOM	
DRAWN	DATE	SIZE	
		B	
		CODE IDENT. NO.	
		82679	
		DWG. NO.	
		MS6067	
		ISSUE	
		Ø	

REVISIONS							
ZONE	LTR	DESCRIPTION	DATE	E.M.N.NO	DRAFT	CHKD	APPD
X		EXP. RELEASE	1-6-67				
X 1		7-3/8 WAS 7-3/4, 30° WAS 15°	1-31-67				
X 2		2D HOLES DEL. 4 1/8 ADDED	2-3-67				
Ø		ORIG RELEASE FOR PROD. 52567			Ø	RS	
Δ		TWO "E" HOLE OR TWO "F" HOLE ADD.	1-28-67	21927	GD.L		



HOLES	DESCRIPTION	REQ
A	.191-.194 DIA.	3
B	11/64 DIA.	9
C	.487-.484 DIA.	6
D	.221-.224 DIA.	3
E	.250 DIA	2
F	.250 DIA	2

TMC P/N	DESCRIPTION	X DIM.
MS 6070-1	AS SHOWN	7.3/8
MS 6070-2	TURN LIPS OPP. DIRECTION	4.5/8

REQ'D ITEM	PART NUMBER	DESCRIPTION	SYM.
3	NT 129-832-4	NUT, PLAIN, SPLINE	D
6	NT 129-616-4	NUT, PLAIN, SPLINE	C
3	NT 129-632-4	NUT, PLAIN, SPLINE	A

F. BUDETTI			
FINAL APPROVAL	DATE	LIST OF MATERIAL	
<i>[Signature]</i>	5/21/67	THE TECHNICAL MATERIEL CORP.	
MECH. DES.	DATE	MAMARONECK, NEW YORK.	
<i>[Signature]</i>	2/10/67		
ELECT. DES.	DATE		
<i>[Signature]</i>	2/10/67		
CHECKED	DATE		
<i>[Signature]</i>	1-6-67		
DRAWN	DATE		
<i>[Signature]</i>	1-6-67		

QTY / UNIT	MODEL USED ON	ASS'Y NO.
1 EA	LPPFA-40K	
APPLICATION		
S401-451	CODE	A

QTY / UNIT	MODEL USED ON	ASS'Y NO.
1 EA	LPPFA-40K	
APPLICATION		
S401-451	CODE	A

UNLESS OTHERWISE SPECIFIED:
 1. USE MATERIAL THICKNESS FOR MAXIMUM RADIUS ON ALL BENDS
 2. ALL ANGULAR BENDS 90 DEGREES
 3. REMOVE ALL BURRS AND SHARP EDGES
 4. MOUNT INSERTS AFTER FINISHING

THE TECHNICAL MATERIEL CORPORATION claims proprietary right in the material disclosed hereon. This drawing is issued in confidence for engineering information only and may not be reproduced or used to manufacture anything shown hereon without permission from THE TECHNICAL MATERIEL CORPORATION to the user. This drawing is loaned for mutual assistance and is subject to recall at any time.

FINISH NOTE:
 S520 TEX. PAINT
 OUTSIDE ONLY
 * LEAVE THIS 5" DIA
 AREA UNPAINTED

MARK TMC P/N
 MS 6070-
 1 HIGH GOTHIC
 8/LATEST REV.
 W/LATEST REV.
 LETTER.

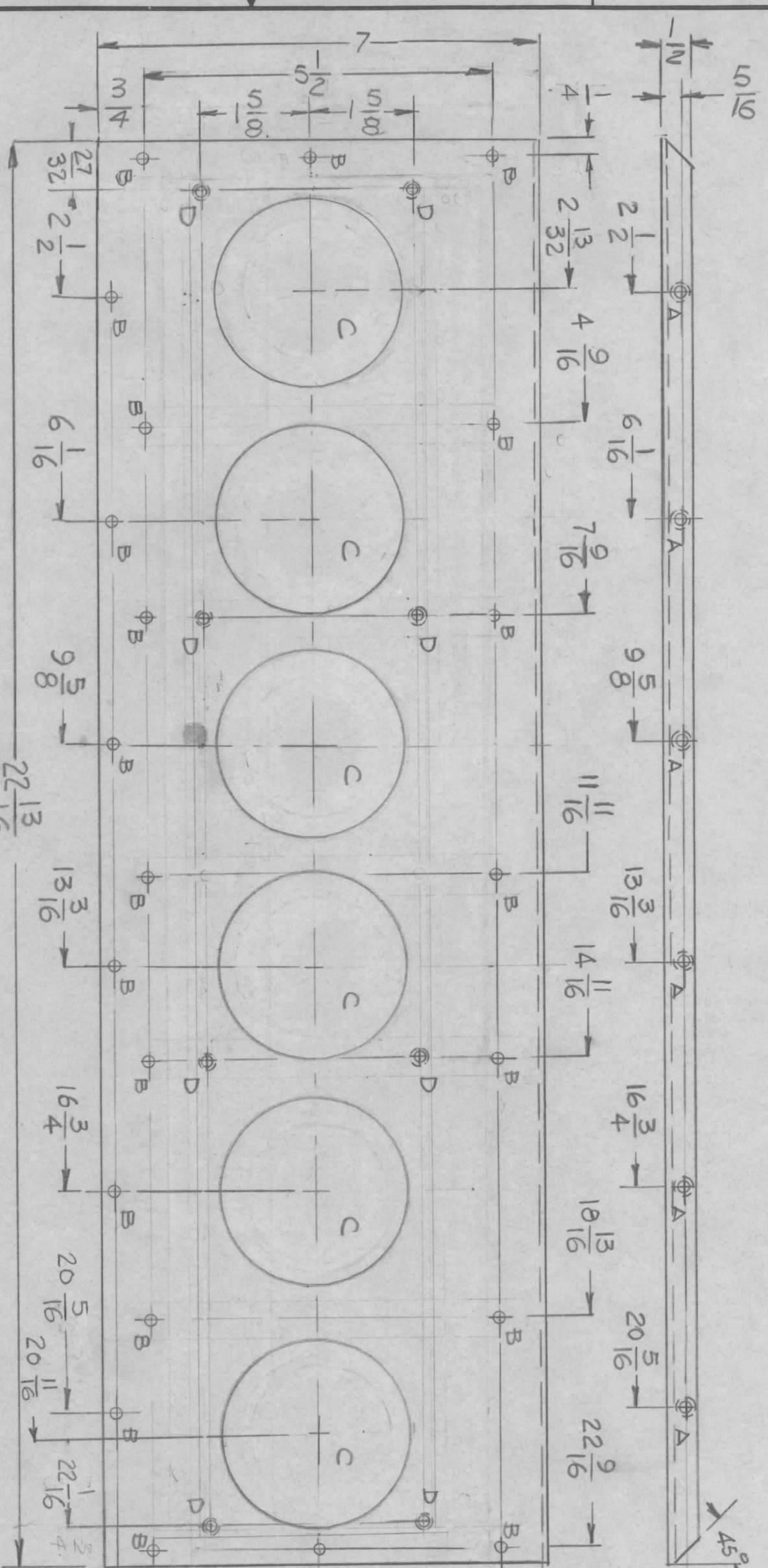
SEE NOTE

SEE NOTE

OUTSIDE VIEW

OPP. SIDE
 SAME

REVISIONS				DATE	APPROVED
EM.N. NO.	DRAFT	CHKD	ZONE	LTR	DESCRIPTION
22008	G-DL			A	REDRAWN - DELETE SQUARE CUTOUT ADD "C" & "D" HOLES
					11-9-81



HOLES
 A - .191 - .194 DIA G REQ
 B - 11/64 DIA 22 REQ
 C - 3" DIA 6 REQ
 D - .161 - .164 DIA 8 REQ

TMC P/NO	DESCRIPTION
MS6071-1	AS SHOWN
MS6071-2	EXCLUDE "C" & "D" HOLES TURN LIP OPP. DIRECTION

REQ'D	ITEM	PART NUMBER	DESCRIPTION	SYM.
B	2	NT129-440-4	NUT, ROUND	D
6	1	NT129-632-4	NUT, ROUND	A

LIST OF MATERIAL
 THE TECHNICAL MATERIEL CORP.
 MAMARONECK, NEW YORK

PLATE, TOP & BOTTOM

QTY / UNIT	MODEL USED ON	ASS'Y. NO.
1 EA	LPFA-40K	
APPLICATION		
CODE		

DECIMALS	FRACTIONS	TOLS.	ANGLES
.X ± .05	1/64		
.XX ± .01			0° .30'
.XXX ± .005			

MATERIAL .064 THK
 ALUM. 5052-H32

FINISH 5520 TEX. PAINT
 OUTSIDE ONLY

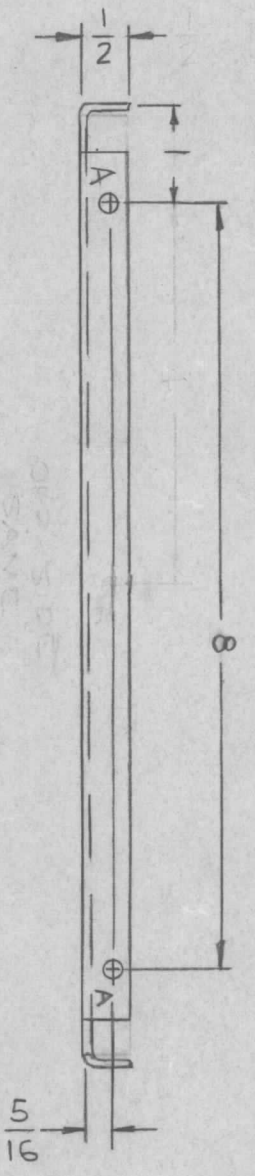
SIZE	CODE IDENT. NO.	DWG NO.	ISSUE
B	82679	MS 6071	A

- UNLESS OTHERWISE SPECIFIED:
- USE MATERIAL THICKNESS FOR MAXIMUM RADIUS ON ALL BENDS.
 - ALL ANGULAR BENDS 90 DEGREES.
 - REMOVE ALL BURRS AND SHARP EDGES.
 - MOUNT INSERTS AFTER FINISHING.

NOTICE TO PERSONS RECEIVING THIS DRAWING
 THE TECHNICAL MATERIEL CORPORATION claims proprietary right in the material disclosed hereon. This drawing is issued in confidence for engineering information only and may not be reproduced or used to manufacture anything shown hereon without permission from THE TECHNICAL MATERIEL CORPORATION to the user. This drawing is loaned for mutual assistance and is subject to recall at any time.

REVISIONS

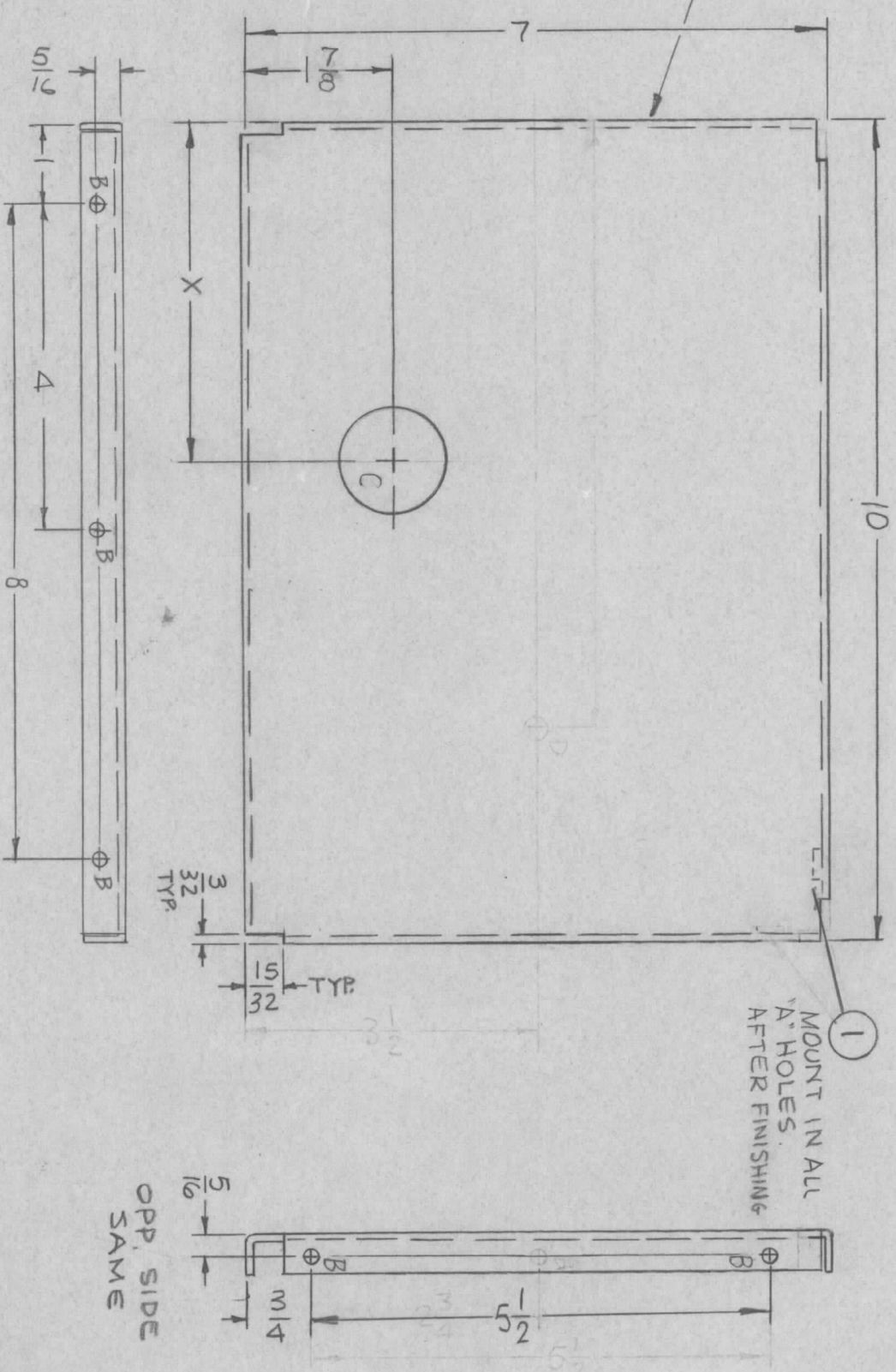
ZONE	LTR	DESCRIPTION	DATE	E.M.N. NO.	DRAFT	CHKD	APPD
X		EXP. RELEASE	1-6-67				
X1		4-VB WAS 4-7/8	1-19-67				
X2		MSG072-1 REV. MSG072-3 ADDED	2-3-67				
Ø		ORIG. RELEASE FOR PROD	5-22-67				
Δ		9/32 DIA "D" HOLE BE- LOCATED DIM 5 DEL.	1-12-82	21923	GBL		



HOLES	DESCRIPTION	REQ.
A	.191-.194 DIA.	2
B	11/64 DIA.	7
C	1-1/4 DIA	1
D		1

TMC P/N	X	QTY/UNIT
MS6072-1	4-7/8	1
MS6072-2	2-1/8	3
MS6072-3	4-7/8	1

MARK TMC P/N
MSG072
HIGH GOTHIC
Ø/LATEST REV.
W/LATEST REV.
LETTER.



REQ'D ITEM	PART NUMBER	DESCRIPTION	SYM.
2	1	NT 129-632-4 NUT, PLAIN SPLINE	A

LIST OF MATERIAL
THE TECHNICAL MATERIEL CORP.
MAMARONECK, NEW YORK

SHIELD, FILTER

SEE CHART	LPFA-40K	ASS'Y NO.
QTY / UNIT	APPLICATION	
CODE A		

UNLESS OTHERWISE SPECIFIED DIMENSIONS ARE IN INCHES AND INCLUDE CHEMICALLY APPLIED OR PLATED FINISHES

DECIMALS .X ± .05
.XX ± .01
XXX ± .005

FRACTIONS 1/64
TOLS. ANGLES 0°-30°

MATERIAL 064 ALUMINUM 5052-H32

FINISH S404 YEL IRIDITE

FINAL APPROVAL	DATE
<i>[Signature]</i>	6/29/67
MECH. DES.	DATE
<i>[Signature]</i>	8/23/67
ELECT. DES.	DATE
<i>[Signature]</i>	1-6-67
CHECKED	DATE
<i>[Signature]</i>	
DRAWN	DATE
<i>[Signature]</i>	

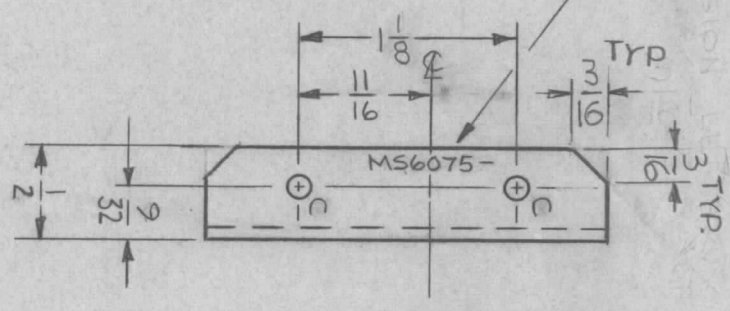
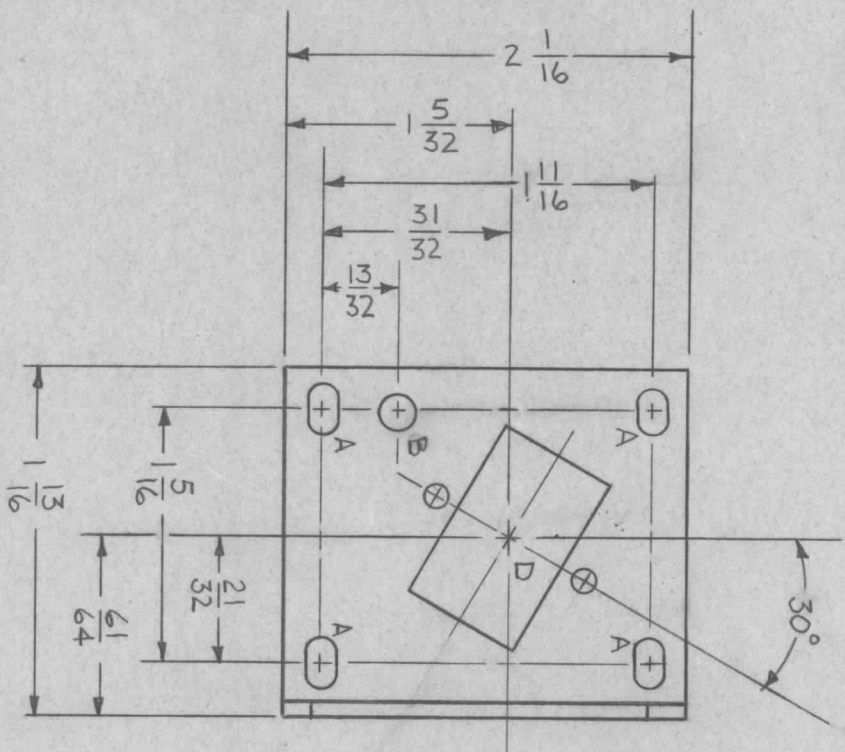
SIZE	CODE IDENT. NO.	DWG NO.	ISSUE
B	82679	MS 6072	A
SCALE	1:2	M/4	SHEET OF

- UNLESS OTHERWISE SPECIFIED:
1. USE MATERIAL THICKNESS FOR MAXIMUM RADIUS ON ALL BENDS
 2. ALL ANGULAR BENDS 90 DEGREES
 3. REMOVE ALL BURRS AND SHARP EDGES
 4. MOUNT INSERTS AFTER FINISHING

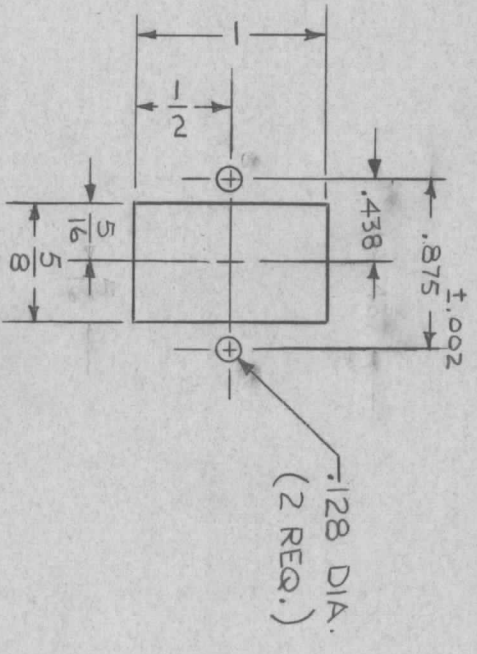
NOTICE TO PERSONS RECEIVING THIS DRAWING
THE TECHNICAL MATERIEL CORPORATION claims proprietary right in the material disclosed hereon. This drawing is issued in confidence for engineering information only and may not be reproduced or used to manufacture anything shown hereon without permission from THE TECHNICAL MATERIEL CORPORATION to the user. This drawing is loaned for mutual assistance and is subject to recall at any time.

REVISIONS						
ZONE	LTR	DESCRIPTION	DATE	E.M.N. NO	DRAFT	CHKD
	X	EXPERIMENTAL RELEASE	1-17-67	X	RME	<i>[Signature]</i>
	X1	NOTCHS ON SIDE VIEW ADDED	1-27-67		RME	<i>[Signature]</i>
	X2	REMOVED HF5R-4	11-10-67		RME	<i>[Signature]</i>
	Ø	ORIGINAL RELEASE	8/7/69		Ø	<i>[Signature]</i>

MARK TMC PART NO 1/8 HIGH
GOTHIC W/LATEST REV. LETTER



HOLE	DESCRIPTION	REQ'D
A	1 1/64 X 1/4 SLOT	4
B	3/16 DIA.	1
C	.128 DIA.	2
D	SEE DETAIL	1



DETAIL "D"

- UNLESS OTHERWISE SPECIFIED:
1. USE MATERIAL THICKNESS FOR MAXIMUM RADIUS ON ALL BENDS
 2. ALL ANGULAR BENDS 90 DEGREES
 3. REMOVE ALL BURRS AND SHARP EDGES

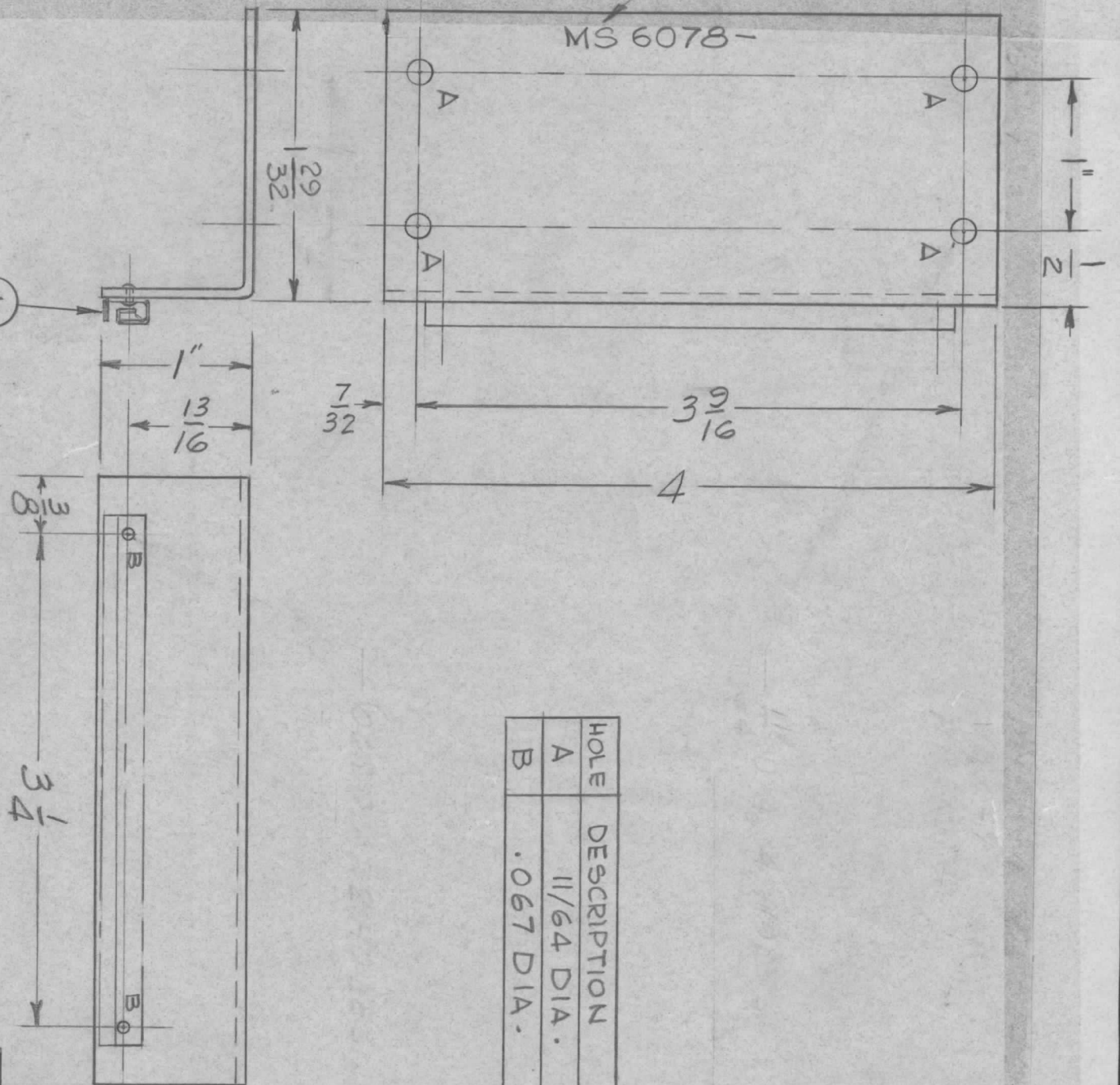
QTY / UNIT	MODEL USED ON	ASSY NO.
7	VOX-7	BMA 114
5	MXX-()	BMA 105
APPLICATION		
S401-451	CODE	A

DECIMALS	FRACTIONS
X ± .05	1/64
.XX ± .01	ANGLES
.XXX ± .005	0° - 30'
MATERIAL	
.064 THK. ALUMINUM	
5052-H32	
FINISH	
S404 YEL. IRIDITE	

REQ'D ITEM	PART NUMBER	DESCRIPTION	SYM.
O. POSE		LIST OF MATERIAL SK 3213 MS 61	
<p>FINAL APPROVAL <i>[Signature]</i> DATE 8/7/69</p> <p>CHECKED <i>[Signature]</i> DATE 8/24/69</p> <p>DRAWN RME DATE 1-17-67</p>			
<p>THE TECHNICAL MATERIEL CORP.</p> <p>MAMARONECK, NEW YORK</p> <p>PLATE, MOUNTING</p>			
SIZE	CODE IDENT. NO.	DWG NO.	ISSUE
B	82679	MS 6075	Ø
SCALE	SHEET		OF

MARK TMC P/NO 1/8 HIGH
GOTHIC WITH LATEST REV.
LETTER.

MS 6078 -



HOLE	DESCRIPTION	REQ.
A	11/64 DIA.	4
B	.067 DIA.	2

REVISIONS						
ZONE	LTR	DESCRIPTION	DATE	E.M.N.NO	DRAFT	CHKD
X		EXP. RELEASE	1-27-67		GDL	
Ø		ORIG. RELEASE FOR PROD.	6-26-67		RS	
A		MOD. HESQ-4 DELETED MOD MMX-13 WAS MMX-1	10/24/67	C.C.	Eng	

UNLESS OTHERWISE SPECIFIED:

1. USE MATERIAL THICKNESS FOR MAXIMUM RADIUS ON ALL BENDS
2. ALL ANGULAR BENDS 90 DEGREES
3. REMOVE ALL BURRS AND SHARP EDGES
4. MOUNT IT.1#2 AFTER FINISHING

QTY / UNIT	1	MODEL USED ON	VOX-7	ASS'Y NO.	BVA-115
APPLICATION		CODE	MMX-()	EVA-115	
SA01-451		CODE	A		

NOTICE TO PERSONS RECEIVING THIS DRAWING
THE TECHNICAL MATERIEL CORPORATION claims proprietary right in the material disclosed hereon. This drawing is issued in confidence for engineering information only and may not be reproduced or used to manufacture anything shown hereon without permission from THE TECHNICAL MATERIEL CORPORATION to the user. This drawing is loaned for mutual assistance and is subject to recall at any time.

DECIMALS	X ± .05	FRACTIONS	1/64
XX ± .01	TOLS.	ANGLES	0° .30'
XXX ± .005			
MATERIAL .063 THK ALUMINUM, 5052-H32			
FINISH 5404 YEL. IRIDITE			

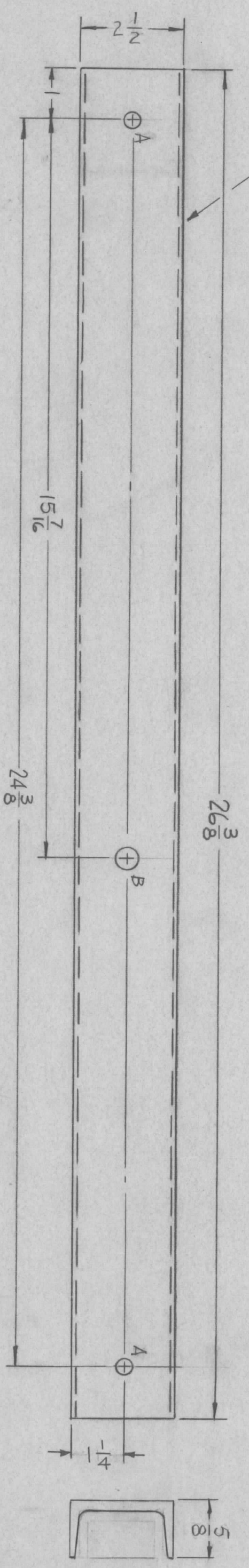
REQ'D ITEM	PART NUMBER	DESCRIPTION	SYM.
1	CU157-4	RETAINER, PC BOARD	B
2	EY100-5	EYELET, FLAT FLANGE	B

LIST OF MATERIAL
THE TECHNICAL MATERIEL CORP.
MAMARONECK, NEW YORK
BRACKET, MTG. RETAINER

DATE	6/25/67	DATE	6-22-67
DATE	1-29-67	DATE	
SCALE	1:1	SHEET	OF
SIZE	B	CODE IDENT. NO.	82679
		DWG NO.	MS 6078
		ISSUE	A

REVISIONS						
ZONE	LTR	DESCRIPTION	DATE	E.M.N. NO.	DRAFT	CHKD
	X	EXP. RELEASE	2-7-67			
	X1	MATERIAL WAS SOLD R. STEEL	221-67			
	X2	MTL. WAS 2 X 9/16 X 3/16 & CHG'D 14 7/16 TO 15 7/16	3/10/67		RME	
	Ø	ORIG RELEASE FOR PROD	4-6-67		Ø	CV

MARK TMC P/N MS6085-
HIGH GOTHIC W/LATEST
REV. LETTER.



HOLES:
A - 15/64 DIA. (2REQ.)
B - 7/16 DIA. (1REQ.)

QTY / UNIT	2	MODEL USED ON	SBT-1KPA2	ASS'Y NO.	
APPLICATION					
S401-451		CODE	A	S401-	

UNLESS OTHERWISE SPECIFIED
DIMENSIONS ARE IN INCHES
AND INCLUDE CHEMICALLY APPLIED
OR PLATED FINISHES

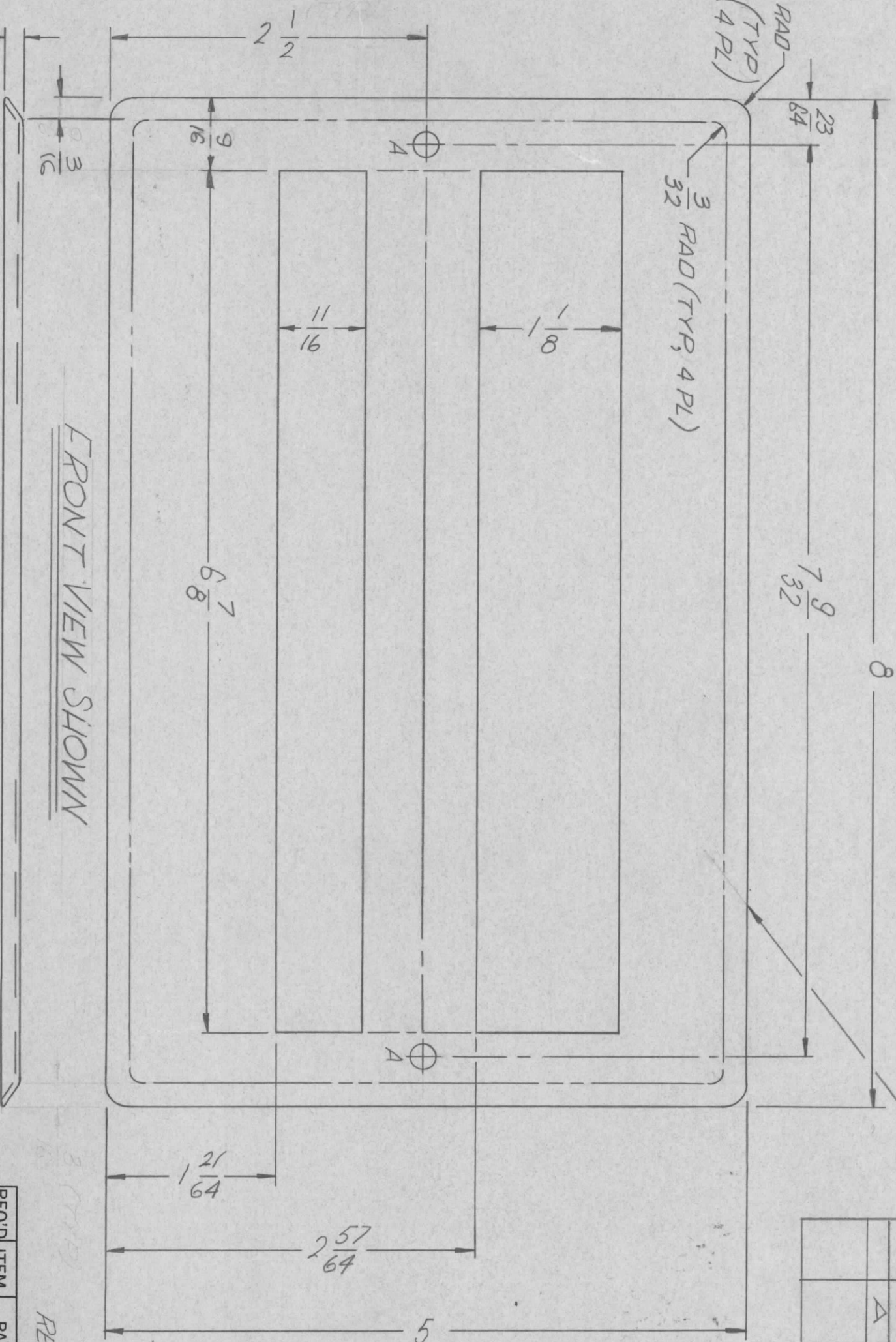
DECIMALS FRACTIONS
X ± .05 1/64
.XX ± .01 ANGLES
.XXX ± .005 0° .30'

MATERIAL 2 1/2 X 5/8 X 3/16
HOT ROLLED STEEL
BAR SIZE CHANNEL
FINISH
SIDS CAD, PLATED

REQ'D ITEM	PART NUMBER	DESCRIPTION	SYM.
F. BUDETTI			
FINAL APPROVAL	DATE	THE TECHNICAL MATERIEL CORP.	
MECH. DES.	DATE	MAMARONECK, NEW YORK	
ELECT. DES.	DATE	TRACK, SUPPORT	
CHECKED	DATE	SIZE	CODE IDENT. NO.
DRAWN	DATE	B	82679
		SCALE	NONE
		DWG NO.	MS6085
		SHEET	OF
		ISSUE	Ø

MARK TMC PART/No (MS6087-)
 1/8 HIGH GOTHIC W/LATEST
 REVISION LETTER (ON REAR OF PLATE)

REVISIONS						
ZONE	LTR	DESCRIPTION	DATE	E.M.N.NO	DRAFT	CHKD
	X	EXP. RELEASE	2.9.67	-	W.H.W	W.H.W
	Ø	ORIG. RELEASE	12.4.68			SCB
	Δ	REF LD 2350 ADDED	3.25.69	-	GE	GE



FRONT VIEW SHOWN

UNLESS OTHERWISE SPECIFIED:
 1. USE MATERIAL THICKNESS FOR MAXIMUM RADIUS ON ALL BENDS
 2. ALL ANGULAR BENDS 90 DEGREES
 3. REMOVE ALL BURRS AND SHARP EDGES

~ HOLE ~
 A - (1.91 - 1.94 DIA) - 2 REQ

REF: LD 2220, LD 2350

QTY / UNIT	MODEL USED ON	ASS'Y NO.
1	RT14-()	
APPLICATION		
CODE		
A		

DECIMALS	FRACTIONS
X ± .05	1/64
XX ± .01	ANGLES
.XXX ± .005	0° - 30'

NOTICE TO PERSONS RECEIVING THIS DRAWING
 THE TECHNICAL MATERIEL CORPORATION claims proprietary right in the material disclosed hereon. This drawing is issued in confidence for engineering information only and may not be reproduced or used to manufacture anything shown hereon without permission from THE TECHNICAL MATERIEL CORPORATION to the user. This drawing is loaned for mutual assistance and is subject to recall at any time.

UNLESS OTHERWISE SPECIFIED DIMENSIONS ARE IN INCHES AND INCLUDE CHEMICALLY APPLIED OR PLATED FINISHES

FINISH
 5052-432
 5120
 BLACK ANODIZE

REQ'D ITEM	PART NUMBER	DESCRIPTION	SYM.
F. EATON		LIST OF MATERIAL	

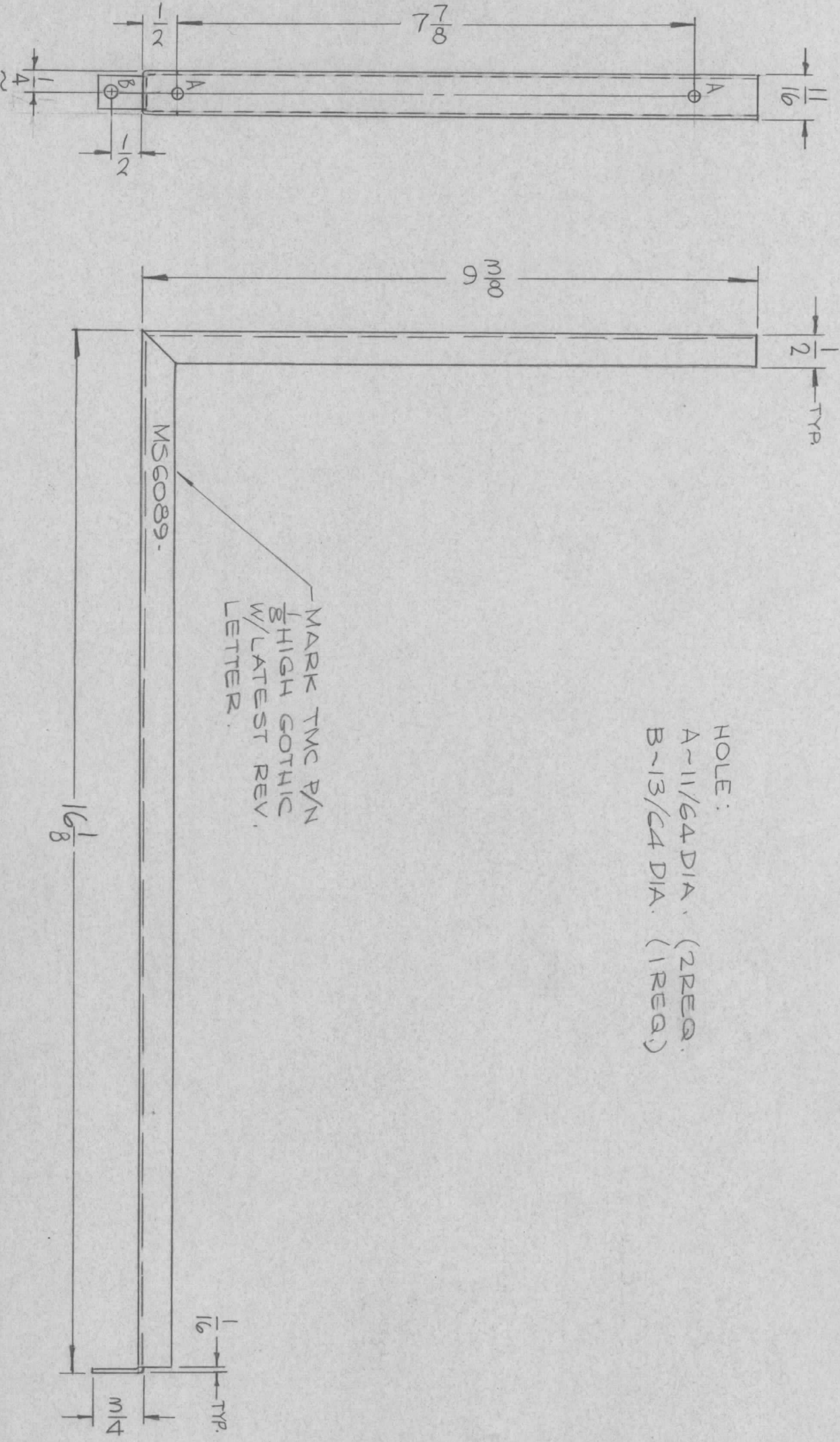
FINAL APPROVAL	DATE	MECH. DES.	DATE
<i>[Signature]</i>	12/3/68		
ELECT. DES.	DATE	CHECKED	DATE
		<i>[Signature]</i>	2/9/67
DRAWN	DATE	MATERIAL	
W.H.W	2.9.67	.051 ALUMINUM	

SIZE	CODE IDENT. NO.	DWG NO.	ISSUE
B	82679	MS6087	A
SCALE	SHEET 1 OF 1		

THE TECHNICAL MATERIEL CORP.
 MAMARONECK, NEW YORK
 PLATE, BEZEL

REVISIONS						
ZONE	LTR	DESCRIPTION	DATE	E.M.N. NO.	DRAFT	CHKD
B/D-5	X1	EXP. RELEASE	2-13-67			
		SIDE VIEW REVERSED	3-1-67			
		ORIGINAL RELEASE FOR PRODUCTION	3-1-67		L.R.K.	

HOLE:
 A ~ 11/64 DIA. (2 REQ.)
 B ~ 13/64 DIA. (1 REQ.)



- UNLESS OTHERWISE SPECIFIED:
1. USE MATERIAL THICKNESS FOR MAXIMUM RADIUS ON ALL BENDS
 2. ALL ANGULAR BENDS 90 DEGREES
 3. REMOVE ALL BURRS AND SHARP EDGES

QTY / UNIT	1	GPT-10KSA	AX659
MODEL USED ON	APPLICATION		
ASS'Y NO.	CODE A		

UNLESS OTHERWISE SPECIFIED DIMENSIONS ARE IN INCHES AND INCLUDE CHEMICALLY APPLIED OR PLATED FINISHES	DECIMALS	FRACTIONS
X ± .05	1/64	
.XX ± .01	TOLS.	ANGLES
.XXX ± .005		0° - 30°
MATERIAL	ALUMINUM 5052-H32	
FINISH	S404 YEL. IRIDITE	

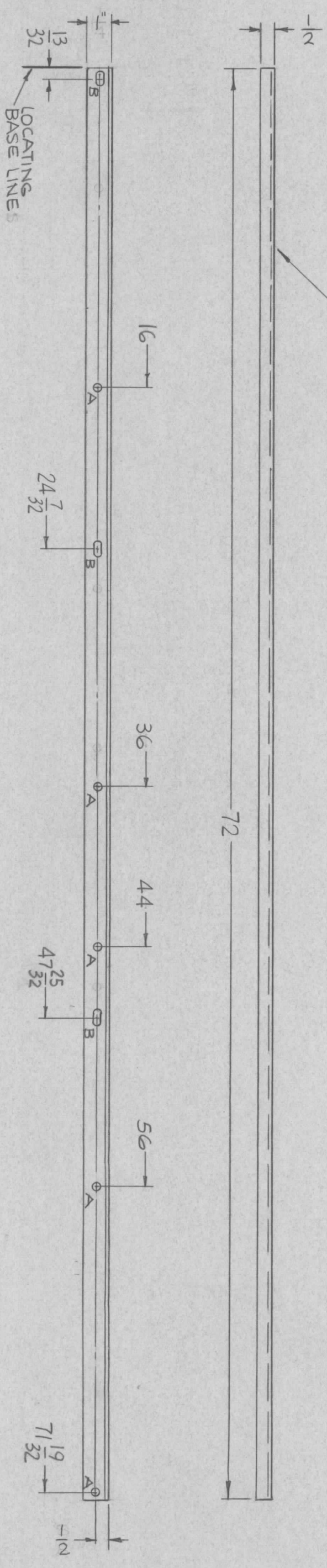
REQ'D ITEM	PART NUMBER	DESCRIPTION	SYM.
FRUDETTE		THE TECHNICAL MATERIEL CORP.	
		MAMARONECK, NEW YORK	

FINAL APPROVAL	DATE	SIZE	CODE IDENT. NO.	DWG NO.	ISSUE
<i>[Signature]</i>	3/1/67	B	82679	MS6089	Ø
CHECKED	DATE	SCALE	FRAME, MTG. FILTER		
<i>[Signature]</i>	3/1/67	1:2			
DRAWN	DATE	SHEET	OF		
<i>[Signature]</i>					

NOTICE TO PERSONS RECEIVING THIS DRAWING
 THE TECHNICAL MATERIEL CORPORATION claims proprietary right in the material disclosed hereon. This drawing is issued in confidence for engineering information only and may not be reproduced or used to manufacture anything shown hereon without permission from THE TECHNICAL MATERIEL CORPORATION to the user. This drawing is loaned for mutual assistance and is subject to recall at any time.

REVISIONS						
ZONE	LTR	DESCRIPTION	DATE	E.M.N.NO	DRAFT	CHKD
	X	EXP. RELEASE	2-16-67			
	Ø	ORIG RELEASE FOR PROD	4-6-67			

MARK TMC P/N (MSG090-)
1/8 HIGH GOTHIC W/LATEST
REV. LETTER.



HOLES	DESCRIPTION	REQ
A	15/64 DIA.	5
B	7/32 X 3/8 DIA.	3

QTY / UNIT	SBT-1KPA2	MODEL USED ON	ASSY NO.
APPLICATION			
S401-451	CODE	S401-	
S401-	CODE	A	

NOTICE TO PERSONS RECEIVING THIS DRAWING
THE TECHNICAL MATERIEL CORPORATION claims proprietary right in the material disclosed hereon. This drawing is issued in confidence for engineering information only and may not be reproduced or used to manufacture anything shown hereon without permission from THE TECHNICAL MATERIEL CORPORATION to the user. This drawing is loaned for mutual assistance and is subject to recall at any time.

UNLESS OTHERWISE SPECIFIED
DIMENSIONS ARE IN INCHES
AND INCLUDE CHEMICALLY APPLIED
OR PLATED FINISHES

DECIMALS	FRACTIONS
X ± .05	1/64
.XX ± .01	ANGLES
.XXX ± .005	0° - 30'

MATERIAL 1/2 X 1 X 1/8
EXTRUDED ALUM
6063-T5
FINISH
5520 TEX VINYL
PAINT

REQ'D ITEM	PART NUMBER	DESCRIPTION	SYM.
F. BUDETTI			
LIST OF MATERIAL			

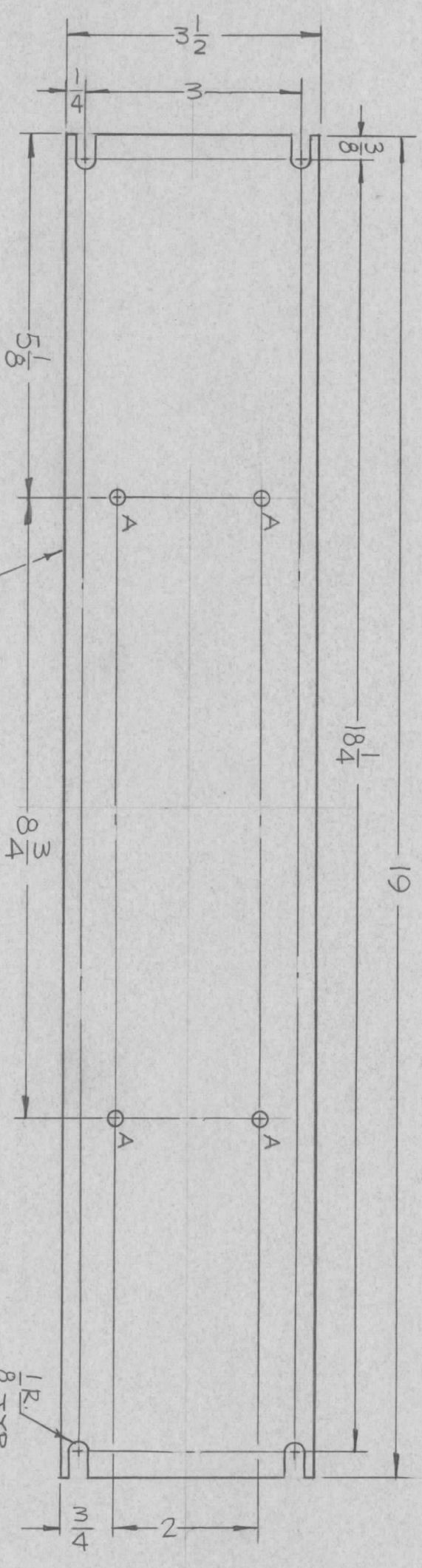
FINAL APPROVAL	DATE
<i>[Signature]</i>	2-16-67
MECH. DES.	DATE
<i>[Signature]</i>	2-16-67
ELECT. DES.	DATE
<i>[Signature]</i>	
CHECKED	DATE
<i>[Signature]</i>	
DRAWN	DATE
<i>[Signature]</i>	2-16-67

THE TECHNICAL MATERIEL CORP.
MAMARONECK, NEW YORK

BRACKET, MTG CABLE

SCALE	3/16	SHEET	OF
SIZE	B	CODE IDENT. NO.	82679
DWG NO.	MSG090	ISSUE	Ø

REVISIONS						
ZONE	LTR	DESCRIPTION	DATE	E.M.N.NO	DRAFT	CHKD
	X	EXP. RELEASE	2-16			
	Ø	ORIG RELEASE FOR PROD	4-6-67	Ø		CV



HOLES:
A - 11/64 DIA. (4 REQ.)

MARK TMC P/N (MS 6091)
HIGH GOTHIC W/LATEST
8 REV. LETTER.
(ON REAR)

QTY / UNIT	1	MODEL USED ON	SBT-1KPA2	ASS'Y NO.	
APPLICATION		CODE	5401-		
S401-4S1			A		

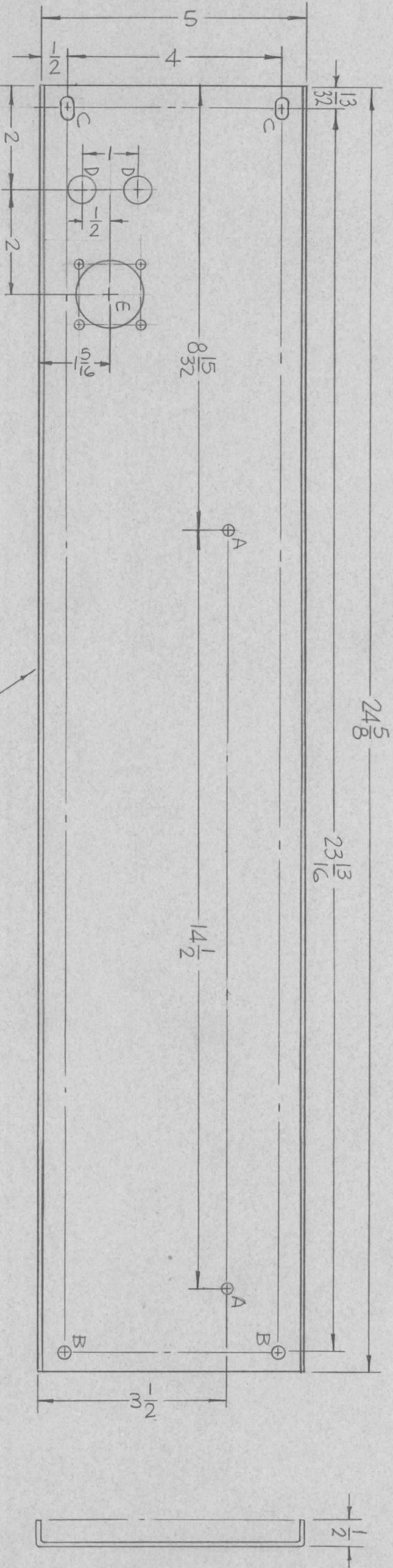
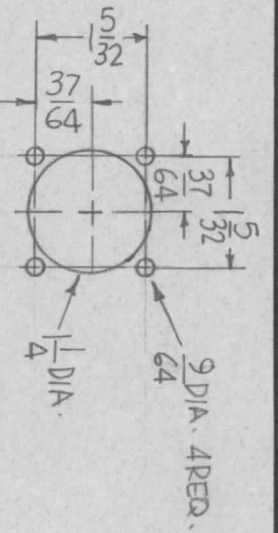
UNLESS OTHERWISE SPECIFIED DIMENSIONS ARE IN INCHES AND INCLUDE CHEMICALLY APPLIED OR PLATED FINISHES	FRACTIONS	1/64
DECIMALS	TOLS.	ANGLES
X ± .05		0° - 30'
.XX ± .01		
.XXX ± .005		
MATERIAL	1/8 THK ALUMINUM 5052-H32	
FINISH	S404 YEL. IRIDITE	

REQ'D ITEM	PART NUMBER	DESCRIPTION	SYM.
LIST OF MATERIAL			
THE TECHNICAL MATERIEL CORP.			
MAMARONECK, NEW YORK			

DATE	7/8/65	DATE	2-12-67
MECH. DES.	<i>[Signature]</i>	CHECKED	<i>[Signature]</i>
ELECT. DES.	<i>[Signature]</i>	DRAWN	<i>[Signature]</i>
SCALE	1:2	SIZE	B
CODE IDENT. NO.	82679	DWG NO.	MS6091
SHEET		OF	
ISSUE	Ø		

PLATE, MTG FILTER

HOLES	DESCRIPTION	REQ.
A	11/64 DIA	2
B	15/64 DIA	2
C	7/32 X 3/8 SLOT	2
D	1/2 DIA.	2
E	SEE DETAIL	1



REVISIONS							
ZONE	LTR	DESCRIPTION	DATE	E.M.N. NO	DRAFT	CHKD	APPD
X		EXP. RELEASE	2-16-67				
Ø		ORIG RELEASE FOR PROD	4-6-67	Ø	CV		

MARK TMC P/N (MS 6092-)
1/8 HIGH GOTHIC W/LATEST
REV. LETTER.

REF: LD1547-

QTY / UNIT	1	MODEL USED ON	SBT-1KPAZ	ASSY NO.	
APPLICATION		CODE	S401-		
S401-4S1		CODE	S401-		
S401-		CODE	A		

UNLESS OTHERWISE SPECIFIED DIMENSIONS ARE IN INCHES AND INCLUDE CHEMICALLY APPLIED OR PLATED FINISHES

DECIMALS FRACTIONS
 X ± .05 1/64
 XX ± .01 TOLS. ANGLES
 .XXX ± .005 0° - 30'

MATERIAL .081 THK ALUMINUM 5052-H32
 FINISH 5520 TEX VINYL PAINT

REQ'D ITEM	PART NUMBER	DESCRIPTION	SYM.
LIST OF MATERIAL			
THE TECHNICAL MATERIEL CORP. MAMARONECK, NEW YORK			

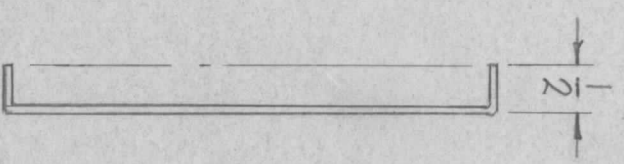
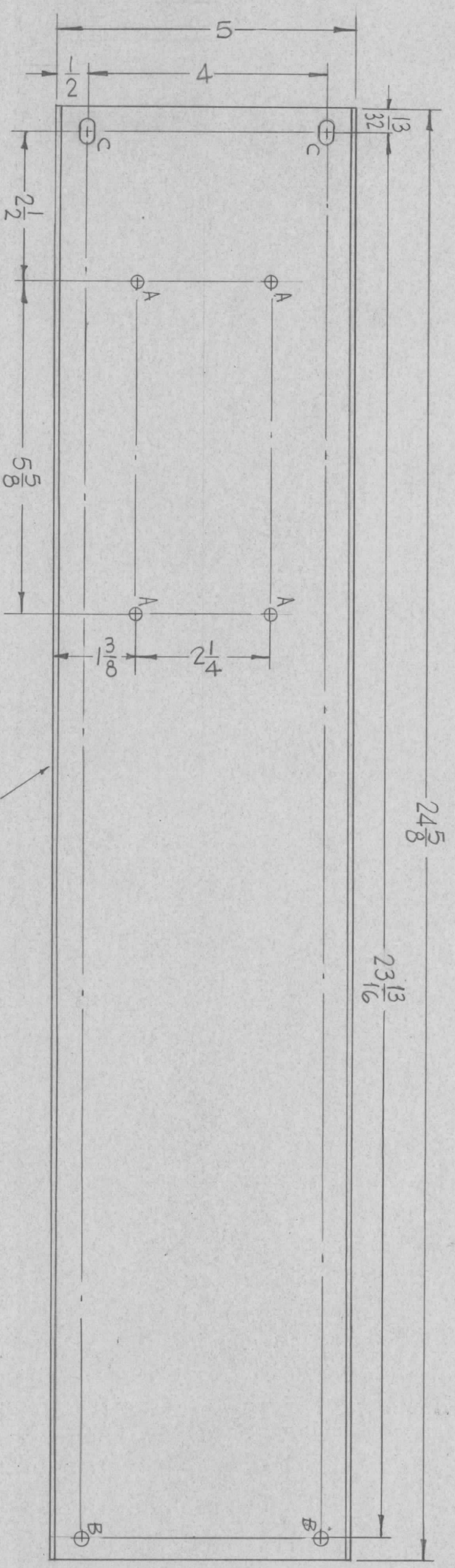
FINAL APPROVAL	DATE	DATE	DATE
<i>[Signature]</i>	7/6/68		
MECH. DES.	DATE	DATE	DATE
<i>[Signature]</i>			
ELECT. DES.	DATE	DATE	DATE
CHECKED	DATE	DATE	DATE
<i>[Signature]</i>			
DRAWN	DATE	DATE	DATE
<i>[Signature]</i>	2-16-67		

SIZE	CODE IDENT. NO.	DWG NO.	ISSUE
B	82679	MS 6092	Ø
SCALE	1:2	SHEET	OF

PLATE, MTG, COMPONENTS

HOLES	DESCRIPTION	REQ.
A	13/64 DIA.	4
B	15/64 DIA.	2
C	1/32 X 3/8 SLOT	2

REVISIONS							
ZONE	LTR	DESCRIPTION	DATE	E.M.N. NO.	DRAFT	CHKD	APPD
	X	EXP RELEASE	2-16-67				
	Ø	ORIG RELEASE FOR PROD	4-6-67			CV	



- UNLESS OTHERWISE SPECIFIED:
1. USE MATERIAL THICKNESS FOR MAXIMUM RADIUS ON ALL BENDS
 2. ALL ANGULAR BENDS 90 DEGREES
 3. REMOVE ALL BURRS AND SHARP EDGES

QTY / UNIT	1	SBT-1KPA2	MODEL USED ON	ASS'Y NO.
APPLICATION				
S401-451		CODE	S401-	
S401-		CODE	A	

UNLESS OTHERWISE SPECIFIED DIMENSIONS ARE IN INCHES AND INCLUDE CHEMICALLY APPLIED OR PLATED FINISHES	FRACTIONS	1/64
DECIMALS	TOLS.	ANGLES
.X ± .05		0° - 30'
.XX ± .01		
.XXX ± .005		
MATERIAL	.081 THK	
ALUMINUM	5052-H32	
FINISH	5920 TEX VINYL PAINT	

REQ'D ITEM	PART NUMBER	DESCRIPTION	SYM.
LIST OF MATERIAL			
THE TECHNICAL MATERIEL CORP.			
MAMARONECK, NEW YORK			

FINAL APPROVAL	DATE	2/16/67
MECH. DES.	DATE	2/16/67
ELECT. DES.	DATE	
CHECKED	DATE	
DRAWN	DATE	2-16-67
SCALE	1:2	
SIZE	B	
CODE IDENT. NO.	82679	
DWG NO.	MS6093	
ISSUE	Ø	

PLATE, MTG. CONNECTOR BRKT.