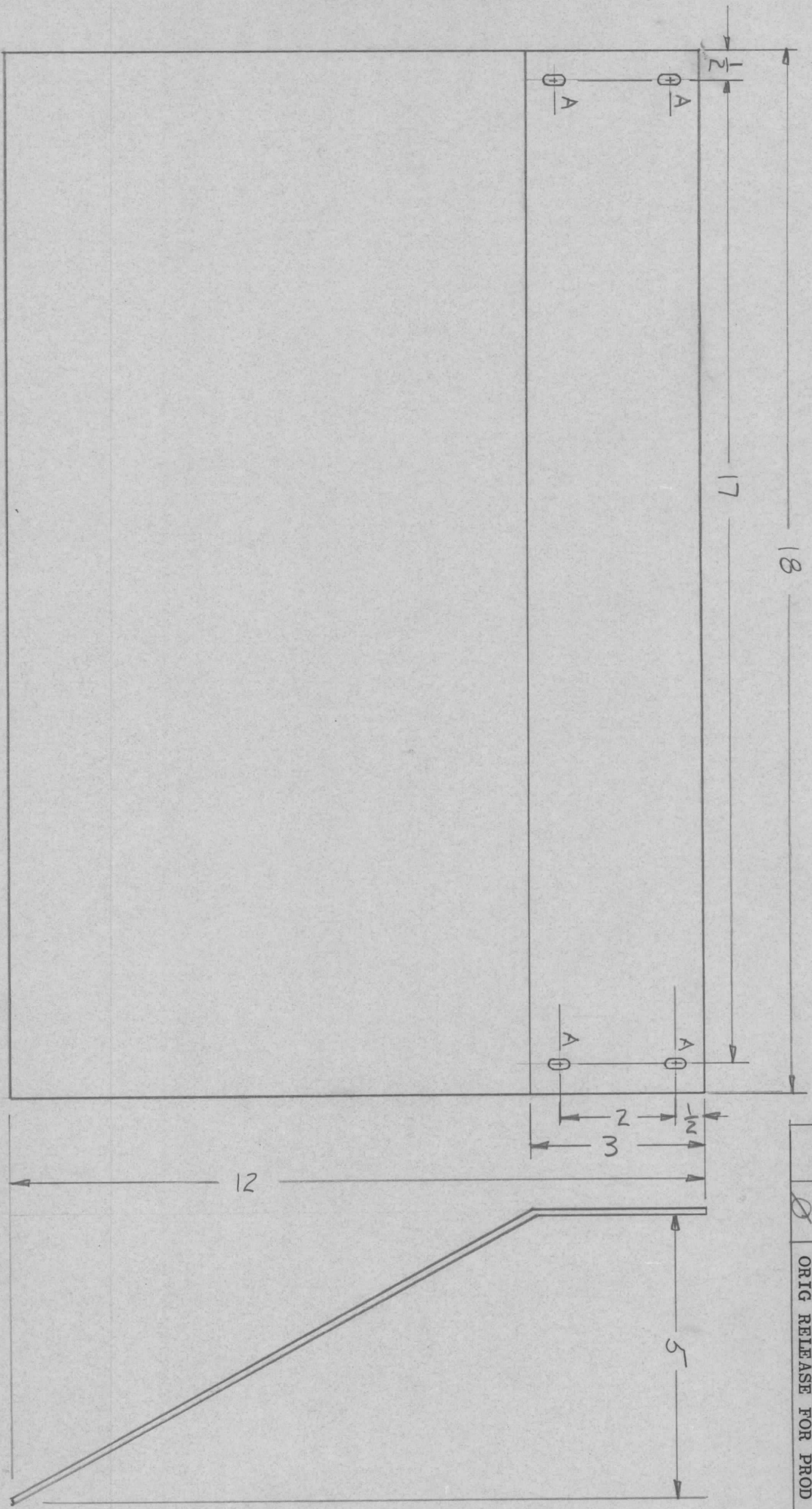


REVISIONS							
ZONE	LTR	DESCRIPTION	DATE	E.M.N. NO	DRAFT	CHKD	APPD
	Ø	ORIG RELEASE FOR PROD	1/13/70		CV		



~ 11/64 x 11/32 SLOT 4 RECD

QTY / UNIT	MODEL USED ON	ASS'Y NO.
	5YH1203	
APPLICATION		
	CODE	

NOTICE TO PERSONS RECEIVING THIS DRAWING
 THE TECHNICAL MATERIEL CORPORATION claims proprietary right in the material disclosed hereon. This drawing is issued in confidence for engineering information only and may not be reproduced or used to manufacture anything shown hereon without permission from THE TECHNICAL MATERIEL CORPORATION to the user. This drawing is loaned for mutual assistance and is subject to recall at any time.

UNLESS OTHERWISE SPECIFIED DIMENSIONS ARE IN INCHES AND INCLUDE CHEMICALLY APPLIED OR PLATED FINISHES	FRACTIONS 1/64	ANGLES 0° - 30'
DECIMALS .X ± .05	TOLS. .XX ± .01	
.XXX ± .005		
MATERIAL 064 ALUM		
5052-H32		
FINISH S404 YEL IRID		

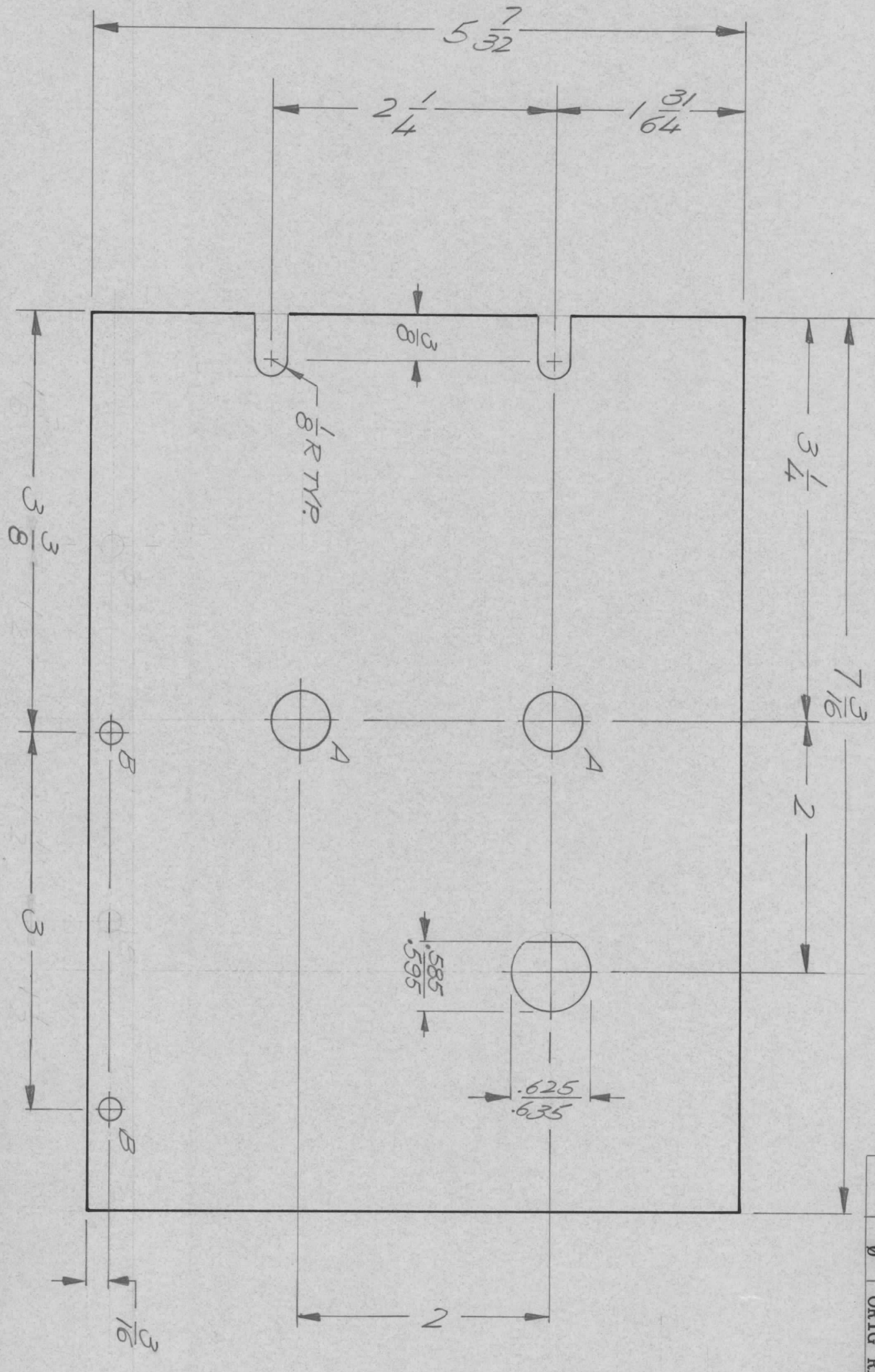
REQ'D	ITEM	PART NUMBER	DESCRIPTION	SYM.

FINAL APPROVAL	MECH. DES.	ELECT. DES.	CHECKED	DRAWN	DATE	DATE	DATE
					1/13/70		
THE TECHNICAL MATERIEL CORP. MAMARONECK, NEW YORK DEFLECTOR, AIR							
SIZE	CODE IDENT. NO.	DWG NO.	ISSUE				
B	82679	M56302	Ø				
SCALE	SHEET		OF				

ENGINEERING SKETCH NOT FOR PRODUCTION

REVISIONS							
ZONE	LTR	DESCRIPTION	DATE	E.M.N.NO	DRAFT	CHKD	APPD
Ø		ORIG RELEASE FOR PROD	1/13/72		CV		

HOLE DESCRIPTION REQ.
 A — 15/32 DIA. — 2
 B — 11/64 DIA. — 2



FRONT VIEW

FINISH NOTES:

- S404 - IRIDITE 14-2 AL-COAT.
 - S114 - ZINC CHROMATE PRIMER
 - S115 - SMOOTH GRAY ENAMEL
- FRONT AND EDGES ONLY }
 OR }
 PRIME AND PAINT PER CUSTOMER'S SPECIFICATIONS

QTY / UNIT	1	MODEL USED ON	METRIKES	ASS'Y NO.	AXS157
APPLICATION		CODE			

NOTICE TO PERSONS RECEIVING THIS DRAWING
 THE TECHNICAL MATERIEL CORPORATION claims proprietary right in the material disclosed hereon. This drawing is issued in confidence for engineering information only and may not be reproduced or used to manufacture anything shown hereon without permission from THE TECHNICAL MATERIEL CORPORATION to the user. This drawing is loaned for mutual assistance and is subject to recall at any time.

UNLESS OTHERWISE SPECIFIED DIMENSIONS ARE IN INCHES AND INCLUDE CHEMICALLY APPLIED OR PLATED FINISHES

DECIMALS	FRACTIONS
.X ± .05	1/64
.XX ± .01	TOLS.
.XXX ± .005	ANGLES
	0° .30'

MATERIAL 1/8 THK ALUM 5052 H32
 FINISH AS NOTED

REF L D 2502

REQ'D ITEM	PART NUMBER	DATE
S.D.		12/2/72
MECH. DES.	A.P.	1-12-72
ELECT. DES.		
CHECKED		
DRAWN	G. EVANGELIST	1/13/71

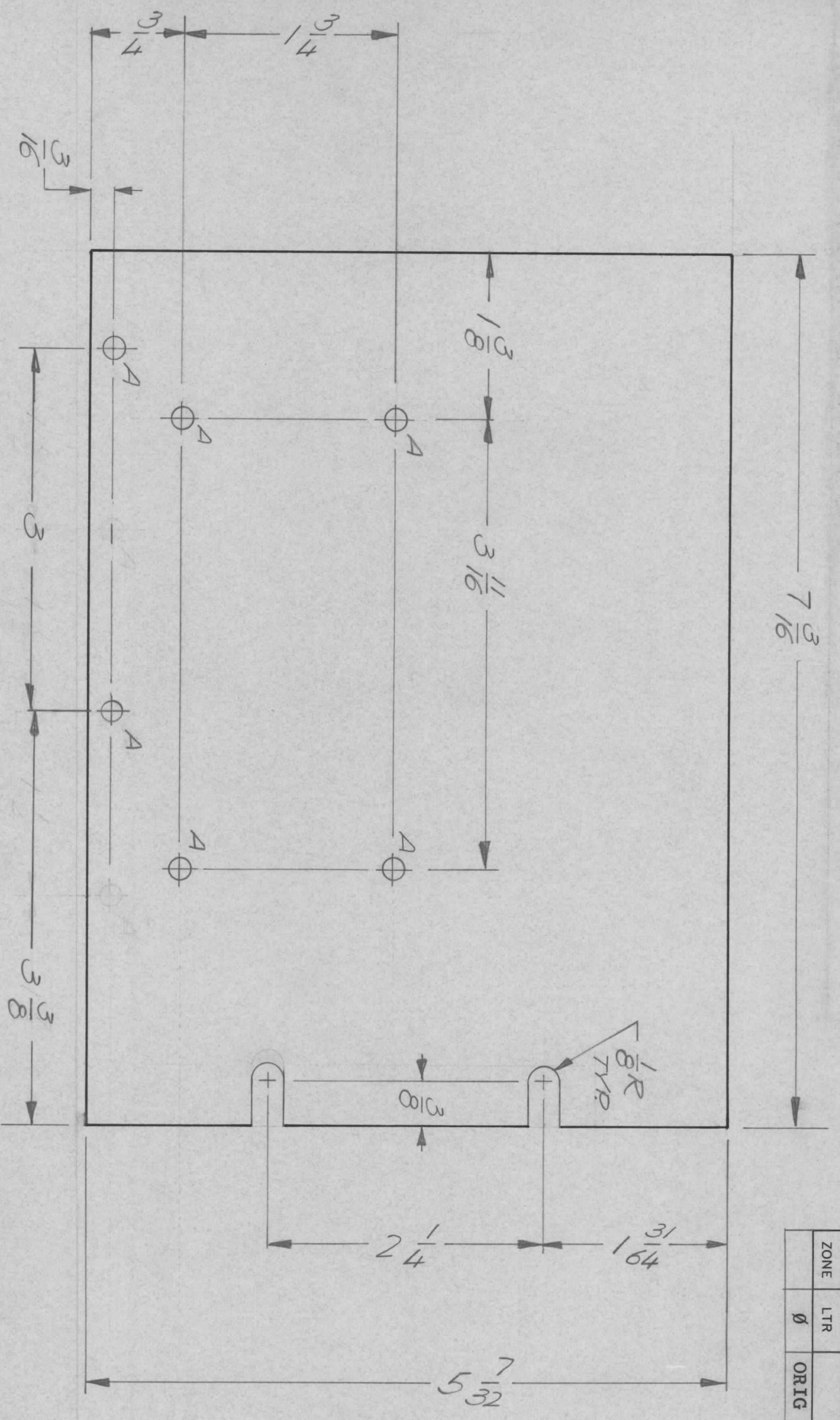
LIST OF MATERIAL

DESCRIPTION	SYM.
THE TECHNICAL MATERIEL CORP. MAMARONECK, NEW YORK	
PAVEL, LEFT, FRONT	

SIZE	CODE IDENT. NO.	DWG NO.	ISSUE
B	82679	M56312	Ø
SCALE 1:1			

REVISIONS							
ZONE	LTR	DESCRIPTION	DATE	E.M.N. NO	DRAFT	CHKD	APPD
Ø		ORIG RELEASE FOR PROD	1/15/64		CV		

HOLE DESCRIPTION REQ.
A—1/164 DIA — 6



FRONT VIEW

FINISH NOTES:

1. S1404 - IRIDITE 14-2 AL-COAT.
 2. S114 - ZINC CHROMATE PRIMER
 3. S115 - SMOOTH GRAY ENAMEL
- FRONT AND EDGES ONLY }
OR }
PRIME AND PAINT PER CUSTOMER'S SPECIFICATIONS

QTY / UNIT	1	MODEL USED ON	METRIKOKES	ASS'Y NO.	AX5157
APPLICATION					
CODE					

NOTICE TO PERSONS RECEIVING THIS DRAWING
THE TECHNICAL MATERIEL CORPORATION claims proprietary right in the material disclosed hereon. This drawing is issued in confidence for engineering information only and may not be reproduced or used to manufacture anything shown hereon without permission from THE TECHNICAL MATERIEL CORPORATION to the user. This drawing is loaned for mutual assistance and is subject to recall at any time.

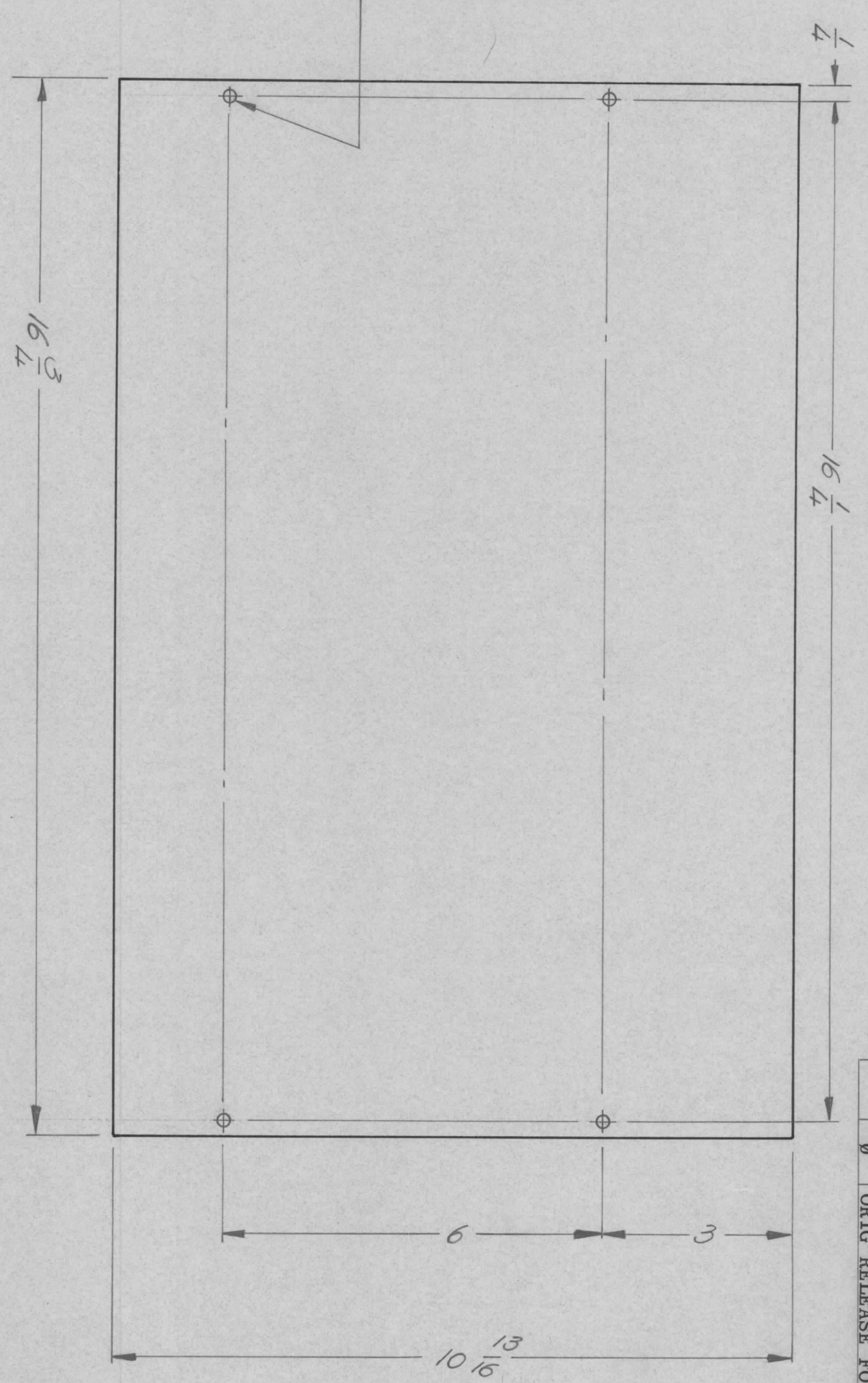
DECIMALS	.X ± .05	TOLS.	1/64
.XX ± .01		ANGLES	90° .30'
.XXX ± .005			
MATERIAL	ALUMINUM 5052-H32		
FINISH	AS NOTED		

REQ'D ITEM	PART NUMBER	DESCRIPTION	SYM.
S.D.		THE TECHNICAL MATERIEL CORP.	
		MAMARONECK, NEW YORK	

LIST OF MATERIAL
PANEL, RIGHT, FRONT

SIZE	B	CODE IDENT. NO.	82679	DWG NO.	M56313	ISSUE	Ø
SCALE	1:1	SHEET		OF			

ENGINEERING SKETCH



MATERIAL : .064 ALUM
PERFORATED, 5/32 DIA.
HOLES ON 3/16 CENTERS

REVISIONS							
ZONE	LTR	DESCRIPTION	DATE	E.M.N.NO	DRAFT	CHKD	APPD
Ø		ORIG RELEASE FOR PROD	1/13/72		CV		

REQ'D ITEM	PART NUMBER	DESCRIPTION	SYM.
S.D.		THE TECHNICAL MATERIEL CORP. MAMARONECK, NEW YORK	

UNLESS OTHERWISE SPECIFIED DIMENSIONS ARE IN INCHES AND INCLUDE CHEMICALLY APPLIED OR PLATED FINISHES	
DECIMALS	FRACTIONS
.X ± .05	1/64
.XX ± .01	ANGLES
.XXX ± .005	0° .30'

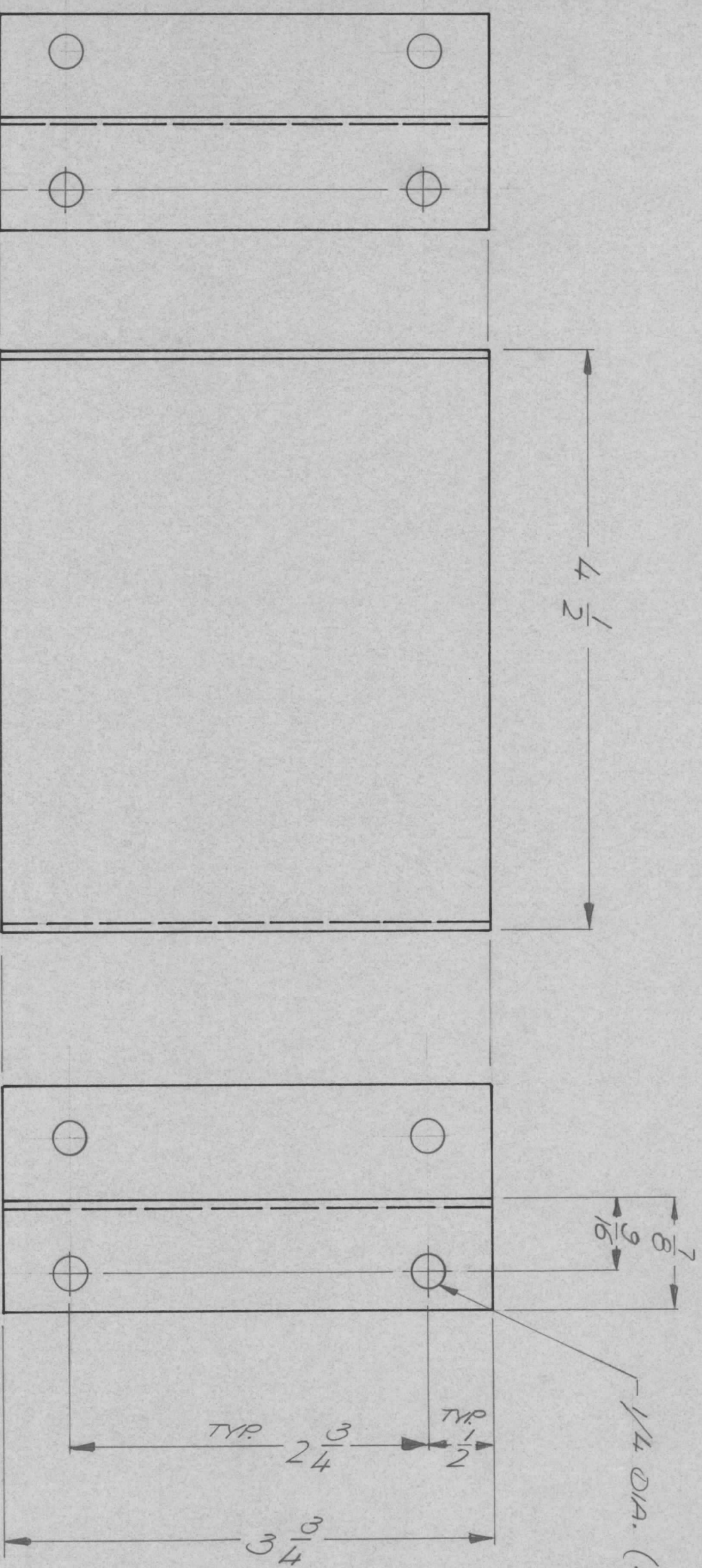
FINAL APPROVAL	MECH. DES.	DATE
S.D.	A.P.	1-12-72
ELECT. DES.		
CHECKED		
DRAWN		

LIST OF MATERIAL
TOUJE UNIT COVER TOP & BOTTOM
SIZE B
CODE IDENT. NO. 82679
DWG NO. MS 6321
SCALE 1/2

QTY / UNIT	MODEL USED ON	ASS'Y NO.
2	RAR-2	
APPLICATION		
	CODE	

NOTICE TO PERSONS RECEIVING THIS DRAWING
THE TECHNICAL MATERIEL CORPORATION claims proprietary right in the material disclosed hereon. This drawing is issued in confidence for engineering information only and may not be reproduced or used to manufacture anything shown hereon without permission from THE TECHNICAL MATERIEL CORPORATION to the user. This drawing is loaned for mutual assistance and is subject to recall at any time.

REVISIONS							
ZONE	LTR	DESCRIPTION	DATE	E.M.N. NO	DRAFT	CHKD	APPD
Ø		ORIG RELEASE FOR PROD	1/3/72		CV		



QTY / UNIT	2	MODEL USED ON	AX5140	ASS'Y NO.	
APPLICATION		CODE			

NOTICE TO PERSONS RECEIVING THIS DRAWING
 THE TECHNICAL MATERIEL CORPORATION claims proprietary right in the material disclosed hereon. This drawing is issued in confidence for engineering information only and may not be reproduced or used to manufacture anything shown hereon without permission from THE TECHNICAL MATERIEL CORPORATION to the user. This drawing is loaned for mutual assistance and is subject to recall at any time.

REQ'D ITEM	PART NUMBER	DESCRIPTION	SYM.
S.D.		THE TECHNICAL MATERIEL CORP. MAMARONECK, NEW YORK	

FINAL APPROVAL	MECH. DES.	DATE
<i>[Signature]</i>	A.P.	1/24/72

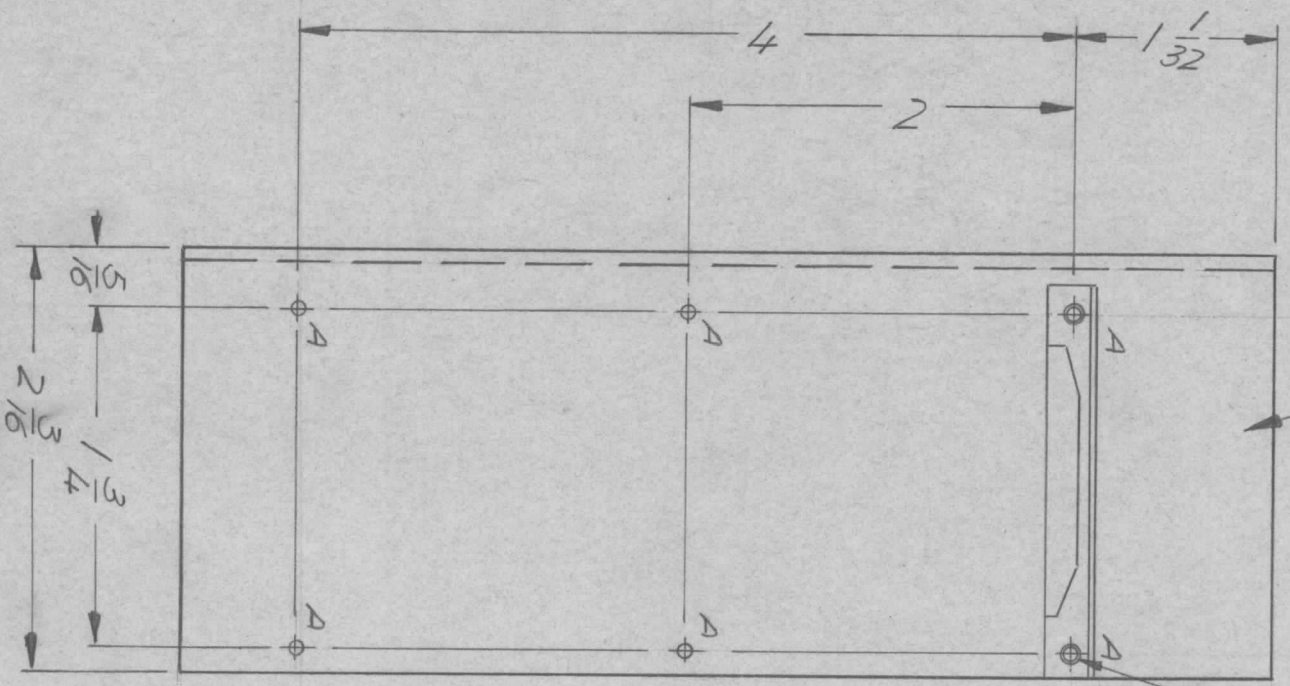
DECIMALS	TOLS.	FRACTIONS
.X ± .05		1/64
.XX ± .01		ANGLES
.XXX ± .005		0° - 30'

MATERIAL	5052 H32	064 ALUM
FINISH	SL04	
	YEL. IRIDITE	

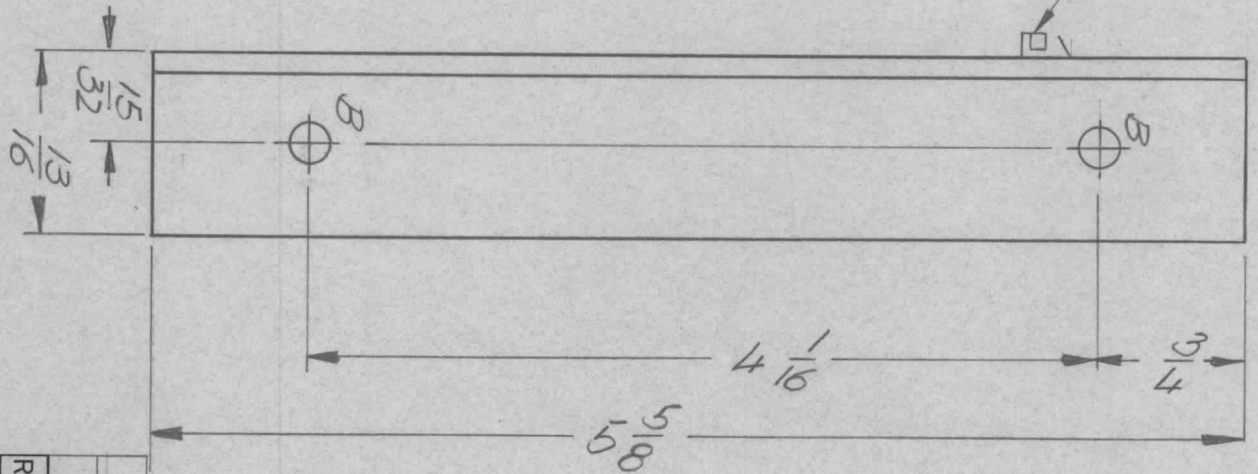
DRAWN	GE	DATE	1/20/71
-------	----	------	---------

SIZE	B	CODE IDENT. NO.	82679	DWG NO.	M56327	ISSUE	Ø
SCALE	1:1	SHEET		OF			

MARK TMC PART NUMBER
1/8 HIGH GOTHIC WITH LATEST
REVISION LETTER ON REAR OF PANEL



1 2 MOUNT IN 'A' HOLES AS SHOWN
(3 PLACES)



REVISIONS							
ZONE	LTR	DESCRIPTION	DATE	E.M.N.NO	DRAFT	CHKD	APPD
	Ø	ORIG RELEASE FOR PROD	1/17/72		CV		

HOLE DESCRIPTION REQ.

- A — .067 DIA. — 6
- B — 13/64 DIA. — 2

TMC P/N USED

MS6336-1	AS SHOWN
MS6336-2	MIRROR IMAGE

REQ'D ITEM	PART NUMBER	DESCRIPTION	SYM.
6	EY100-4	EYELET, FLAT FLANGE	A
3	CU157-2	RETAINER PC BOARD	A

LIST OF MATERIAL

THE TECHNICAL MATERIEL CORP.
MAMARONECK, NEW YORK

P.C. BD. INSERT BRACKET

QTY / UNIT	1 EACH	MODEL USED ON	RDGR-1YA	ASS'Y NO.	AX5162
APPLICATION		CODE			

DECIMALS	FRACTIONS
.X ± .05	1/64
.XX ± .01	ANGLES
.XXX ± .005	0° - 30°
MATERIAL .081 ALUM	
FINISH 5052 H32	
YEL. IRIDITE	

FINAL APPROVAL	DATE
<i>[Signature]</i>	1-6-72
MECH. DES.	DATE
<i>[Signature]</i>	12-5-71
ELECT. DES.	DATE
<i>[Signature]</i>	1/23/71
CHECKED	DATE
<i>[Signature]</i>	1-6-72
DRAWN	DATE
<i>[Signature]</i>	1/23/71

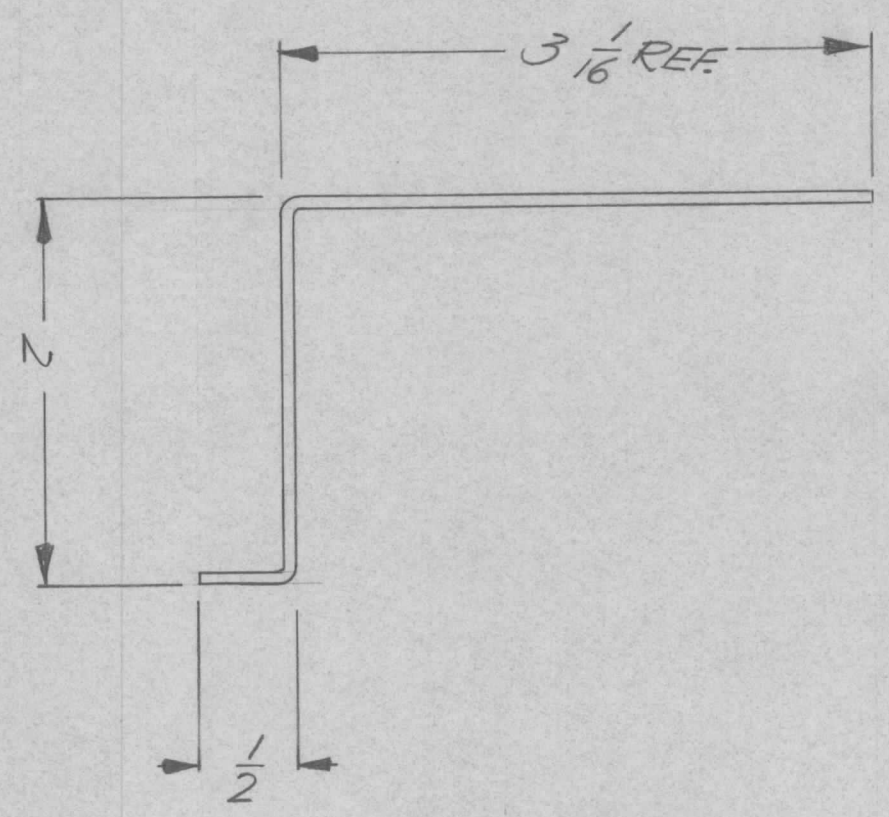
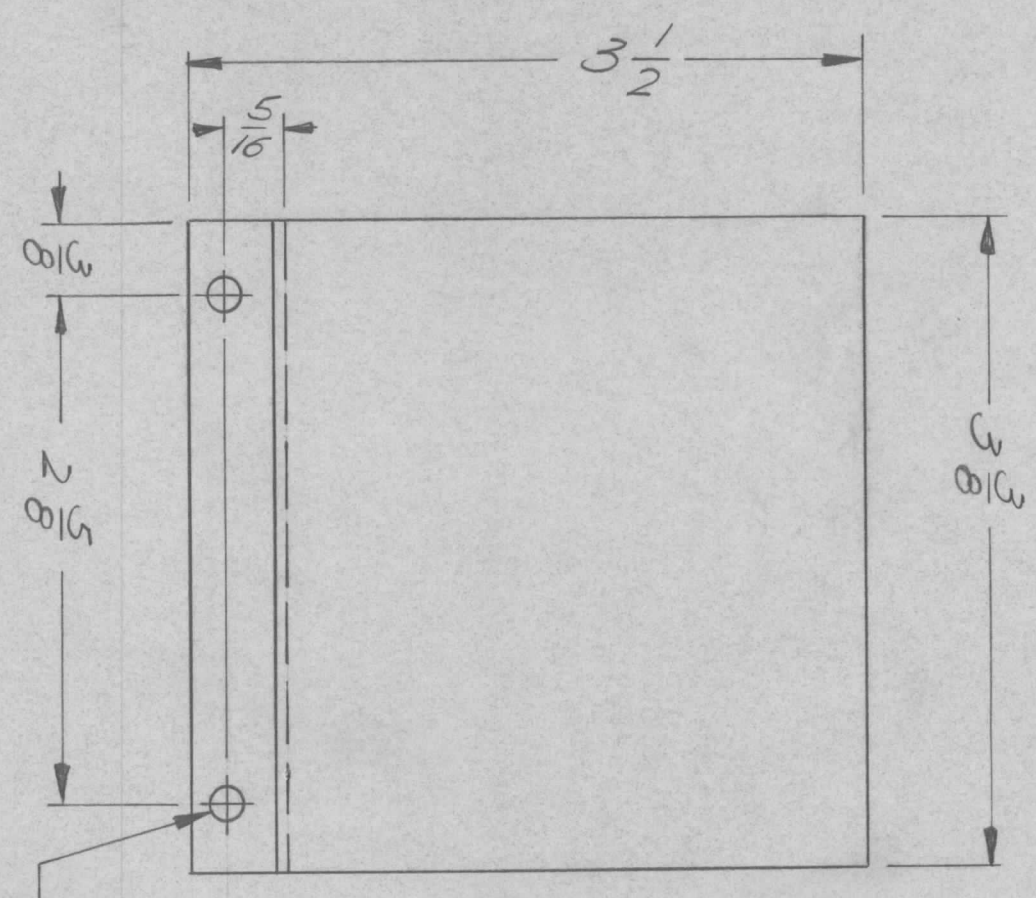
SIZE	CODE IDENT. NO.	DWG NO.	ISSUE
B	82679	MS6336	Ø
SCALE 1:1	SHEET		OF

UNLESS OTHERWISE SPECIFIED:

1. USE MATERIAL THICKNESS FOR MAXIMUM RADIUS ON ALL BENDS.
2. ALL ANGULAR BENDS 90 DEGREES.
3. REMOVE ALL BURRS AND SHARP EDGES.
4. MOUNT INSERTS AFTER FINISHING.

NOTICE TO PERSONS RECEIVING THIS DRAWING
THE TECHNICAL MATERIEL CORPORATION claims proprietary right in the material disclosed hereon. This drawing is issued in confidence for engineering information only and may not be reproduced or used to manufacture anything shown hereon without permission from THE TECHNICAL MATERIEL CORPORATION to the user. This drawing is loaned for mutual assistance and is subject to recall at any time.

REVISIONS							
ZONE	LTR	DESCRIPTION	DATE	E.M.N.NO	DRAFT	CHKD	APPD
	Ø	ORIG RELEASE FOR PROD	1/13/72				



QTY / UNIT	1	MODEL USED ON	MFR10 RES	ASSY NO.	AX 5157
APPLICATION		CODE			

NOTICE TO PERSONS RECEIVING THIS DRAWING
 THE TECHNICAL MATERIEL CORPORATION claims proprietary right in the material disclosed hereon. This drawing is issued in confidence for engineering information only and may not be reproduced or used to manufacture anything shown hereon without permission from THE TECHNICAL MATERIEL CORPORATION to the user. This drawing is loaned for mutual assistance and is subject to recall at any time.

DECIMALS	X ± .05	TOLS.	FRACTIONS	1/64
	.XX ± .01		ANGLES	0° - 30'
	.XXX ± .005			
MATERIAL	.06L ALUM.			
FINISH	5052 H32			
	VEL. IRIDITE			

REQ'D ITEM	S.D.	PART NUMBER	
FINAL APPROVAL	<i>[Signature]</i>	DATE	1/24/72
MECH. DES.	ALP	DATE	1-4-72
ELECT. DES.		DATE	
CHECKED		DATE	
DRAWN	GE	DATE	1/13/72

LIST OF MATERIAL			
THE TECHNICAL MATERIEL CORP.			
MAMARONECK, NEW YORK			
COVER, PROTECTIVE, TERM. STR			
SIZE	CODE IDENT. NO.	DWG NO.	ISSUE
B	82679	MKS 6340	Ø
SCALE	1:1	SHEET	OF

REVISIONS						
ZONE	LTR	DESCRIPTION	DATE	E.M.N.NO	DRAFT	CHKD
Ø		ORIG RELEASE FOR PROD	2/29/72			



FINISH NOTES:

1. S404 - IRIDITE 14-2 AL-COAT.
 2. S114 - ZINC CHROMATE PRIMER
 3. S115 - SMOOTH GRAY ENAMEL
- FRONT AND EDGES ONLY }
PRIME AND PAINT PER CUSTOMER'S SPECIFICATIONS

QTY / UNIT	1	MODEL USED ON	METR 10K	ASS'Y NO.	BKA 481
APPLICATION		CODE			

NOTICE TO PERSONS RECEIVING THIS DRAWING
 THE TECHNICAL MATERIEL CORPORATION claims proprietary right in the material disclosed hereon. This drawing is issued in confidence for engineering information only and may not be reproduced or used to manufacture anything shown hereon without permission from THE TECHNICAL MATERIEL CORPORATION to the user. This drawing is loaned for mutual assistance and is subject to recall at any time.

UNLESS OTHERWISE SPECIFIED DIMENSIONS ARE IN INCHES AND INCLUDE CHEMICALLY APPLIED OR PLATED FINISHES

DECIMALS	FRACTIONS
X ± .05	1/64
.XX ± .01	ANGLES
.XXX ± .005	0° .30'

MATERIAL 1/16 ALUM
 5052 H32
 FINISH AS NOTED

REQ'D ITEM	PART NUMBER	DESCRIPTION	SYM.
LIST OF MATERIAL			

FINAL APPROVAL	DATE
<i>E.B.</i>	2/29/72
MECH. DES.	DATE
<i>AC</i>	
ELECT. DES.	DATE
CHECKED	DATE
DRAWN	DATE
<i>GE</i>	2/13/72

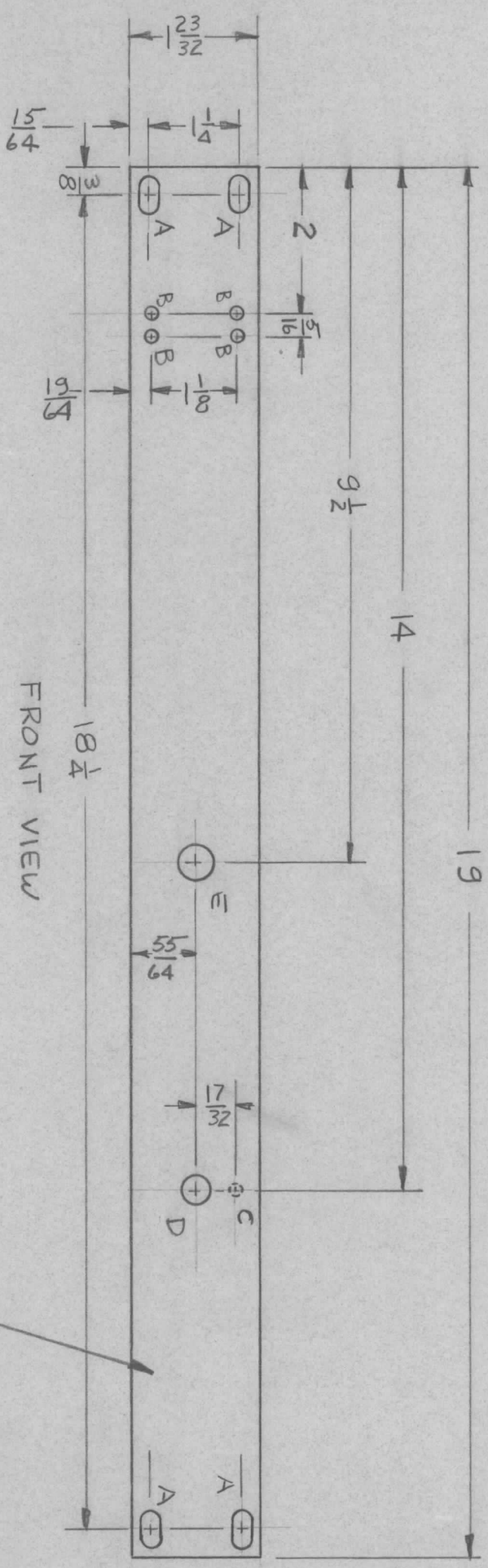
THE TECHNICAL MATERIEL CORP.
 MAMARONECK, NEW YORK

PLATE, COVER

SIZE	CODE IDENT. NO.	DWG NO.	ISSUE
B	82679	MS 6342	Ø
SCALE	1:1	SHEET	OF

ENGINEERING SKETCH NOT FOR PRODUCTIONS

REVISIONS							
ZONE	LTR	DESCRIPTION	DATE	E.M.N. NO	DRAFT	CHKD	APPD
		ORIG RELEASE FOR PROD	2/18/72			CO	



- A ~ 1/4 x 29 slot 4 REQ'D
- B ~ 2/4 DIA 4 REQ'D
- C ~ 9/64 DIA x 1/2 DEEP FROM REAR 1 REQ'D
- D ~ 3/8 DIA 1 REQ'D
- E ~ 15/64 DIA 1 REQ'D

FINISH NOTES:

- S404 - IRIDITE 14-2 AL-COAT.
- S114 - ZINC CHROMATE PRIMER
- S115 - SMOOTH GRAY ENAMEL

FRONT AND EDGES ONLY

PRIME AND PAINT PER CUSTOMER'S SPECIFICATIONS

UNLESS OTHERWISE SPECIFIED:

- USE MATERIAL THICKNESS FOR MAXIMUM RADIUS ON ALL BENDS.
- ALL ANGULAR BENDS 90 DEGREES.
- REMOVE ALL BURRS AND SHARP EDGES.

QTY / UNIT	MODEL USED ON	ASS'Y NO.
1	GPTH-40K5A	AX5109
1	GPTH-40K5S	AX5109
APPLICATION		
CODE		

NOTICE TO PERSONS RECEIVING THIS DRAWING

THE TECHNICAL MATERIEL CORPORATION claims proprietary right in the material disclosed hereon. This drawing is issued in confidence for engineering information only and may not be reproduced or used to manufacture anything shown hereon without permission from THE TECHNICAL MATERIEL CORPORATION to the user. This drawing is loaned for mutual assistance and is subject to recall at any time.

DECIMALS	FRACTIONS
.X ± .05	1/64
.XX ± .01	ANGLES
.XXX ± .005	0° - 30'

FINISH

SEE NOTES

MATERIAL 3/16 ALUM

2024-T3

REF: LD2512

MARK TMC PART NUMBER
1/8 HIGH GOTHIC WITH LATEST
REVISION LETTER ON REAR OF PANEL

REQ'D	ITEM	PART NUMBER	DESCRIPTION	SYM.
			LIST OF MATERIAL	

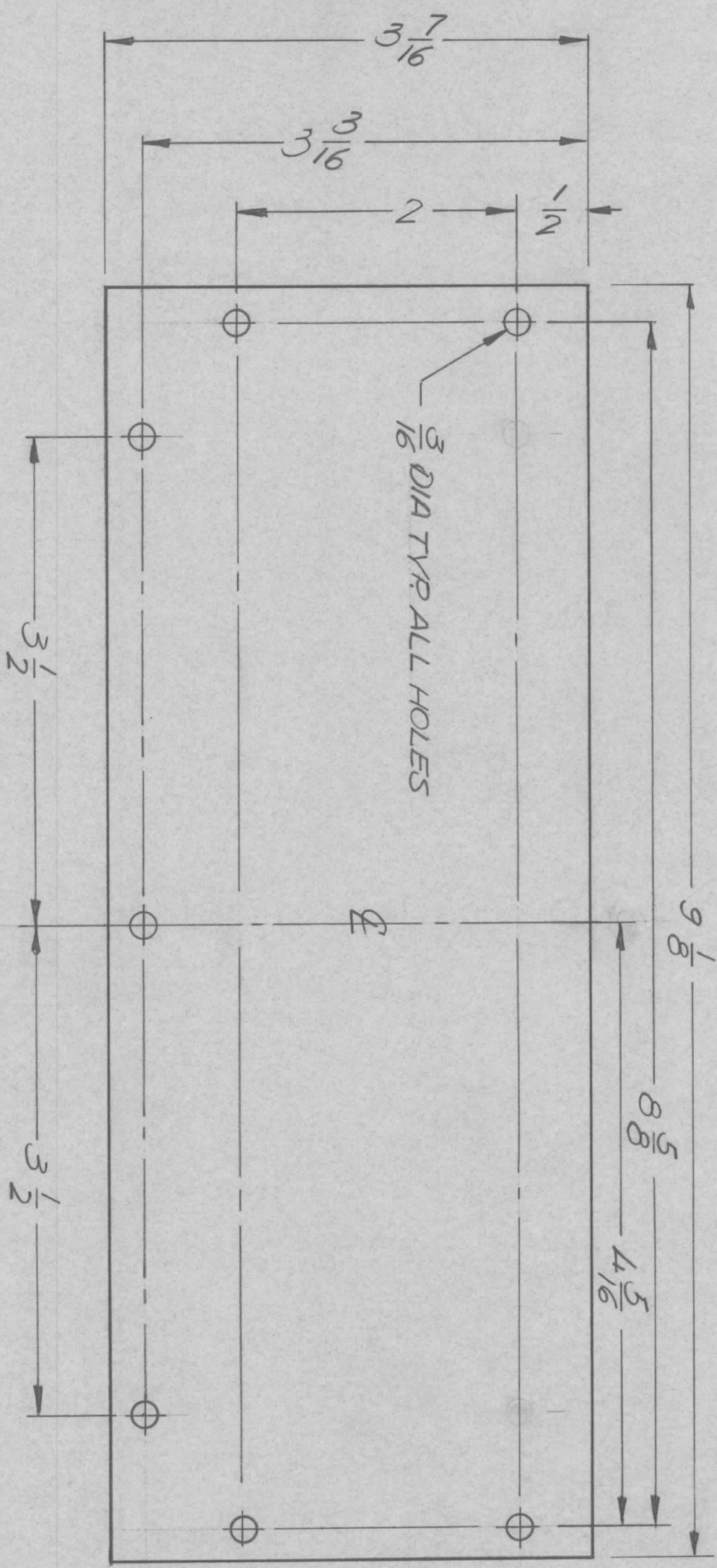
THE TECHNICAL MATERIEL CORP.
MAMARONECK, NEW YORK

PANEL, FR, Test Key

DATE	DATE	DATE	DATE	DATE
15Feb72	15Feb72	15Feb72	15Feb72	15Feb72
MECH. DES.	ELECT. DES.	CHECKED	DRAWN	
SIZE	CODE IDENT. NO.	DWG NO.	SHEET	OF
B	82679	MS6350		
SCALE				

ENGINEERING SKETCH

REVISIONS							
ZONE	LTR	DESCRIPTION	DATE	E.M.N. NO	DRAFT	CHKD	APPD
Ø		ORIG RELEASE FOR PROD	3/30/72		CV		



MATERIAL .064 ALUM
PERFORATED 5/32 DIA
HOLES ON 3/16 CENTRS.

QTY / UNIT	2	MODEL USED ON	KIT 382	ASS'Y NO.	AX 5144
APPLICATION					
CODE					

UNLESS OTHERWISE SPECIFIED DIMENSIONS ARE IN INCHES AND INCLUDE CHEMICALLY APPLIED OR PLATED FINISHES	DECIMALS X ± .05 .XX ± .01 .XXX ± .005	TOLS.	FRACTIONS 1/64	ANGLES 0° .30'
FINISH	AS NOTED			
5404 VEL. IRIDITE				

REQ'D ITEM	PART NUMBER	DESCRIPTION	SYM.
F.B.		THE TECHNICAL MATERIEL CORP.	
FINAL APPROVAL	DATE		
MECH. DES. AL PETROCCA	3-1-72		
ELECT. DES.	DATE		
CHECKED	DATE		
DRAWN GE	2/18/72		

LIST OF MATERIAL			
THE TECHNICAL MATERIEL CORP.			
MAMARONECK, NEW YORK			
COVER TOP & BOTTOM			
SIZE	CODE IDENT. NO.	DWG NO.	ISSUE
B	82679	MMS 6352	Ø
SCALE	1:1	SHEET	OF

NOTICE TO PERSONS RECEIVING THIS DRAWING
THE TECHNICAL MATERIEL CORPORATION claims proprietary right in the material disclosed hereon. This drawing is issued in confidence for engineering information only and may not be reproduced or used to manufacture anything shown hereon without permission from THE TECHNICAL MATERIEL CORPORATION to the user. This drawing is loaned for mutual assistance and is subject to recall at any time.

REVISIONS				
ZONE	LTR	DESCRIPTION	DATE	E.M.N. NO
Ø		ORIG RELEASE FOR PROD	3/30/72	CV

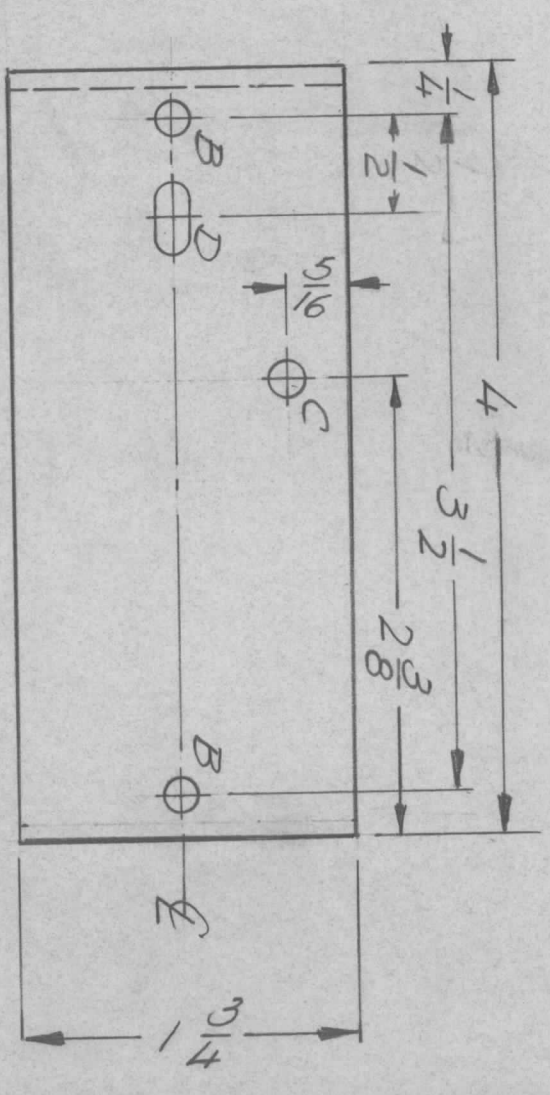
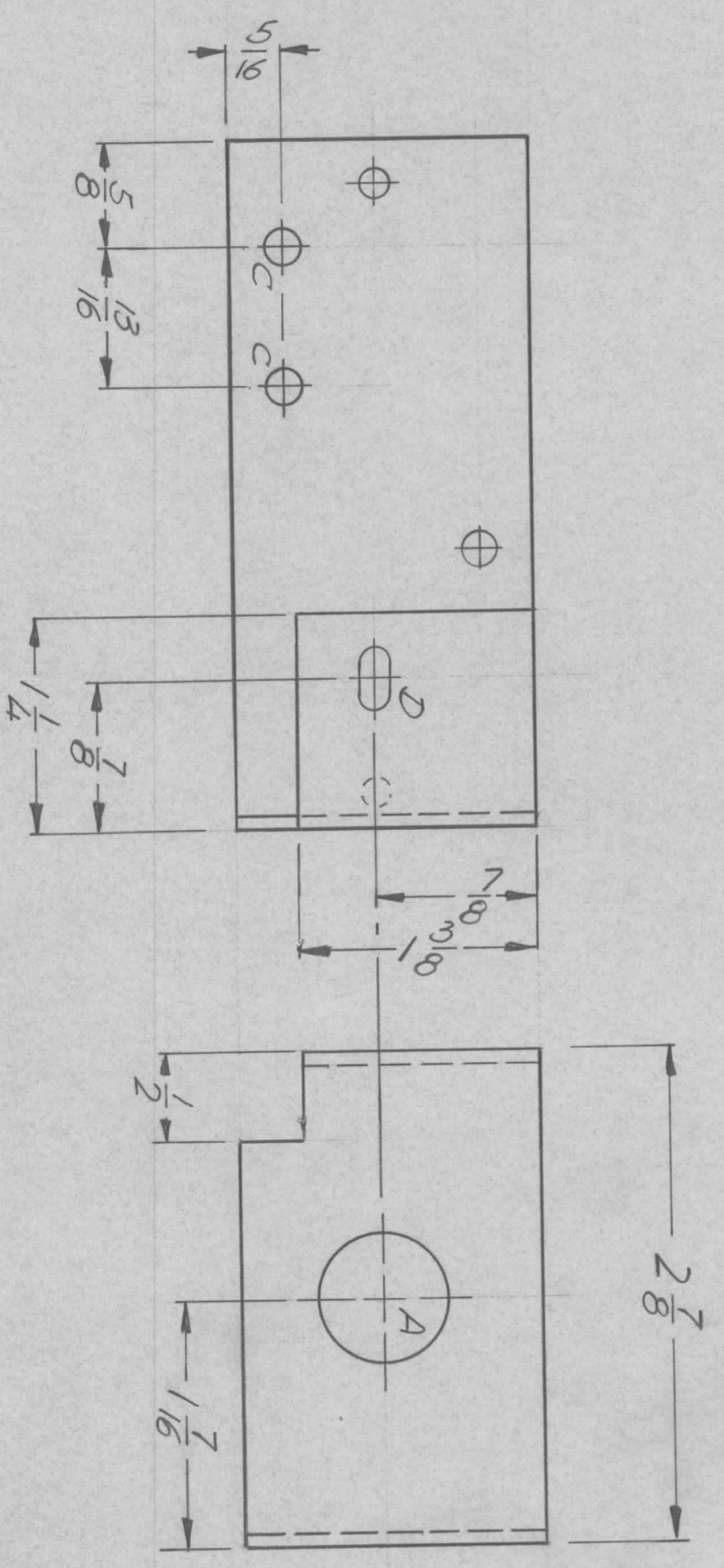
HOLE DESCRIPTION QTY.

A — 3/4 DIA — 1

B — 1/164 DIA. — 2

C — 1/32 DIA. — 3

D — 1/164 x 1/32 SLT — 2



QTY / UNIT	1	MODEL USED ON	KIT 382	ASS'Y NO.	AX 5144
APPLICATION					
CODE					

DECIMALS	FRACTIONS
.X ± .05	1/64
.XX ± .01	ANGLES
.XXX ± .005	0° - 30'

FINISH 5404
VEL. IRIDITE

REQ'D ITEM	PART NUMBER	DESCRIPTION	SYM.
------------	-------------	-------------	------

FINAL APPROVAL *F.B.* DATE 29/4/72

MECH. DES. *AL PETROCCA* DATE 3-1-72

ELECT. DES.

CHECKED

DRAWN *G.E.* DATE 2/20/72

LIST OF MATERIAL

THE TECHNICAL MATERIEL CORP.

MAMARONECK, NEW YORK

BRACKET SWITCH MTG

SIZE	CODE IDENT. NO.	DWG NO.	ISSUE
B	82679	MAS 6353	Ø

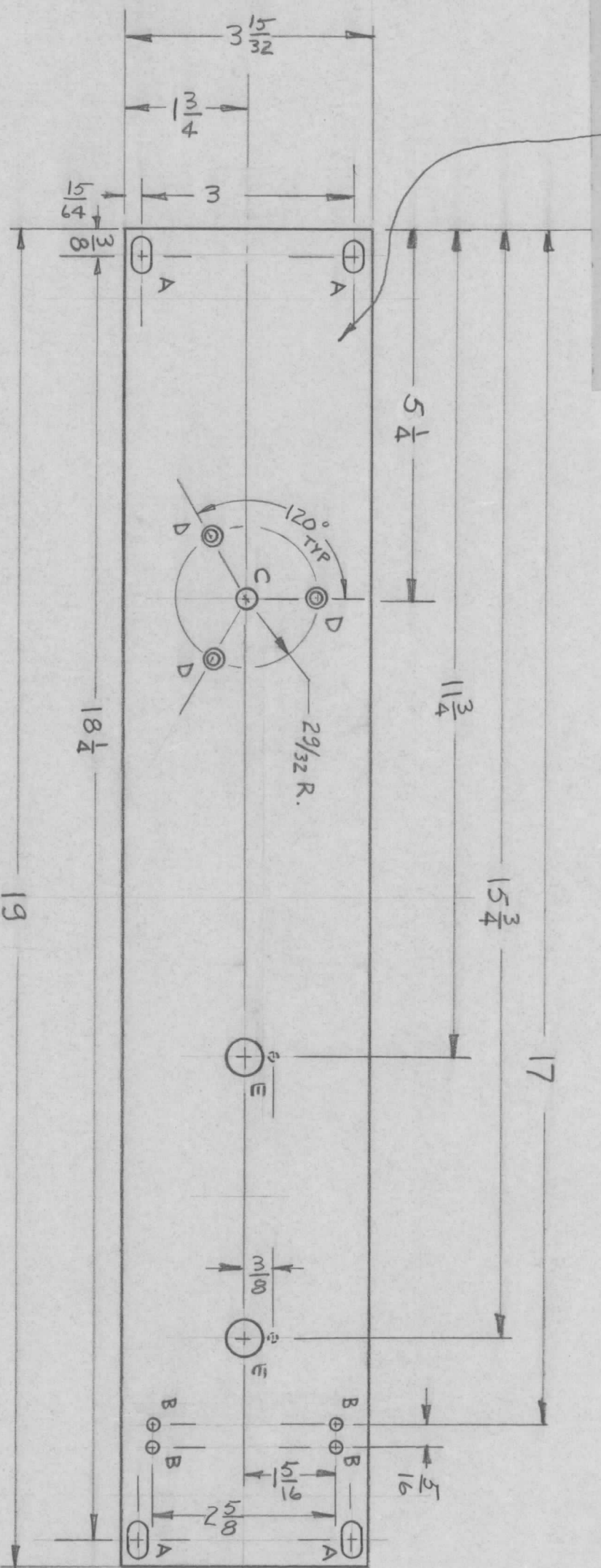
SCALE 1:1

SHEET 1 OF 1

NOTICE TO PERSONS RECEIVING THIS DRAWING

THE TECHNICAL MATERIEL CORPORATION claims proprietary right in the material disclosed hereon. This drawing is issued in confidence for engineering information only and may not be reproduced or used to manufacture anything shown hereon without permission from THE TECHNICAL MATERIEL CORPORATION to the user. This drawing is loaned for mutual assistance and is subject to recall at any time.

MARK TMC PART NUMBER
1/8 HIGH GOTHIC WITH LATEST
REVISION LETTER ON REAR OF PANEL



- A ~ 1/4 X 29/64 SCOT 4 REARD
- B ~ 9/64 DIA 4 REARD
- C ~ 3/32 DIA 1 REARD
- D ~ .144 DIA CTSK 82° 3 REARD
- E ~ .284 DIA

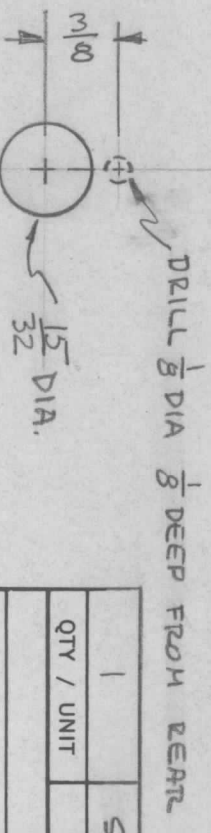
MACHINING:

1. MILL ALL EDGES.
2. HOLES MUST BE DRILLED, UNLESS OTHERWISE SPECIFIED.
3. LATERAL BOW OF PANEL MUST BE KEPT TO .031 TOLERANCE.
4. PANEL MUST BE FREE OF ALL MACHINING MARKS, GOUGES AND SCRATCHES. IF NECESSARY, SAND FRONT OF PANEL WITH NO. 120 GRIT SANDPAPER.

FRONT VIEW

FINISH NOTES:

1. S404 - IRIDITE 14-2 AL-COAT.
 2. S114 - ZINC CHROMATE PRIMER
 3. S115 - SMOOTH GRAY ENAMEL
- PRIME AND PAINT PER CUSTOMER'S SPECIFICATIONS



E DETAIL 2 REARD

REVISIONS				DESCRIPTION	DATE	APPROVED
EM/N	NO	DRAFT	CHKD	ZONE	LTR	ORIGINAL RELEASE FOR PRODUCTION
		EP				5-30-72

REQ'D	ITEM	PART NUMBER	DESCRIPTION	SYM.
			THE TECHNICAL MATERIEL CORP. MAMARONECK, NEW YORK	

FINAL APPROVAL	MECH. DES.	DATE	FINAL APPROVAL	MECH. DES.	DATE
<i>[Signature]</i>	<i>[Signature]</i>	27 MAR 72	<i>[Signature]</i>	<i>[Signature]</i>	27 MAR 72

QTY / UNIT	MODEL USED ON	ASSY NO.
1	SYH 1205	AX5145
APPLICATION		
CODE		

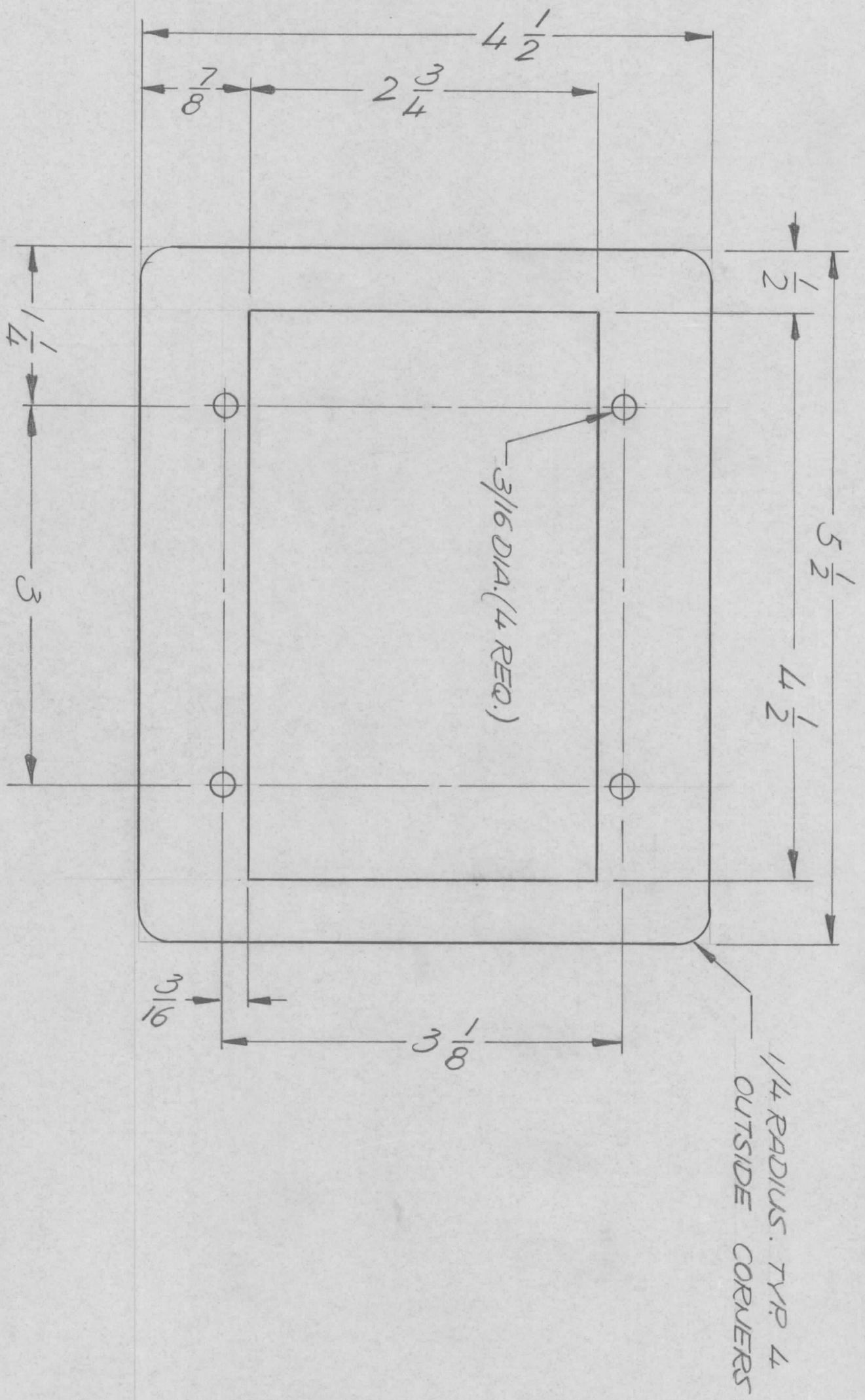
UNLESS OTHERWISE SPECIFIED DIMENSIONS ARE IN INCHES AND INCLUDE CHEMICALLY APPLIED OR PLATED FINISHES	FRACTIONS	TOLS.	ANGLES
.X ± .05	1/64		
.XX ± .01			0° - 30°
.XXX ± .005			

MATERIAL	3/16 ALUMI
FINISH	SEE NOTES

SIZE	CODE IDENT. NO.	DWG NO.	ISSUE
B	82679	MS6356	Ø
SCALE			SHEET OF

NOTICE TO PERSONS RECEIVING THIS DRAWING
THE TECHNICAL MATERIEL CORPORATION claims proprietary right in the material disclosed herein. This drawing is issued in confidence for engineering information only and may not be reproduced or used to manufacture anything shown herein without permission from THE TECHNICAL MATERIEL CORPORATION to the user. This drawing is loaned for mutual assistance and is subject to recall at any time.

REVISIONS				DESCRIPTION	DATE	APPROVED
EM.N. NO.	DRAFT	CHKD	ZONE	LTR	ORIGINAL RELEASE FOR PRODUCTION	8/3/79



1	HFL 110K/REV A	AP 153
1	HFL 110K	KIT 377
APPLICATON		
QTY / UNIT	MODEL USED ON	ASS'Y NO.
	CODE	

UNLESS OTHERWISE SPECIFIED DIMENSIONS ARE IN INCHES AND INCLUDE CHEMICALLY APPLIED OR PLATED FINISHES

DECIMALS FRACTIONS

.X ± .05 1/64

.XX ± .01 ANGLES

XXX ± .005 0° - 30°

MATERIAL .064 ALUM

FINISH 5052 H32

5052 H32

FINISH SH40L

YEL IRIDITE

REQ'D ITEM	PART NUMBER	DESCRIPTION	SYM.
LIST OF MATERIAL			

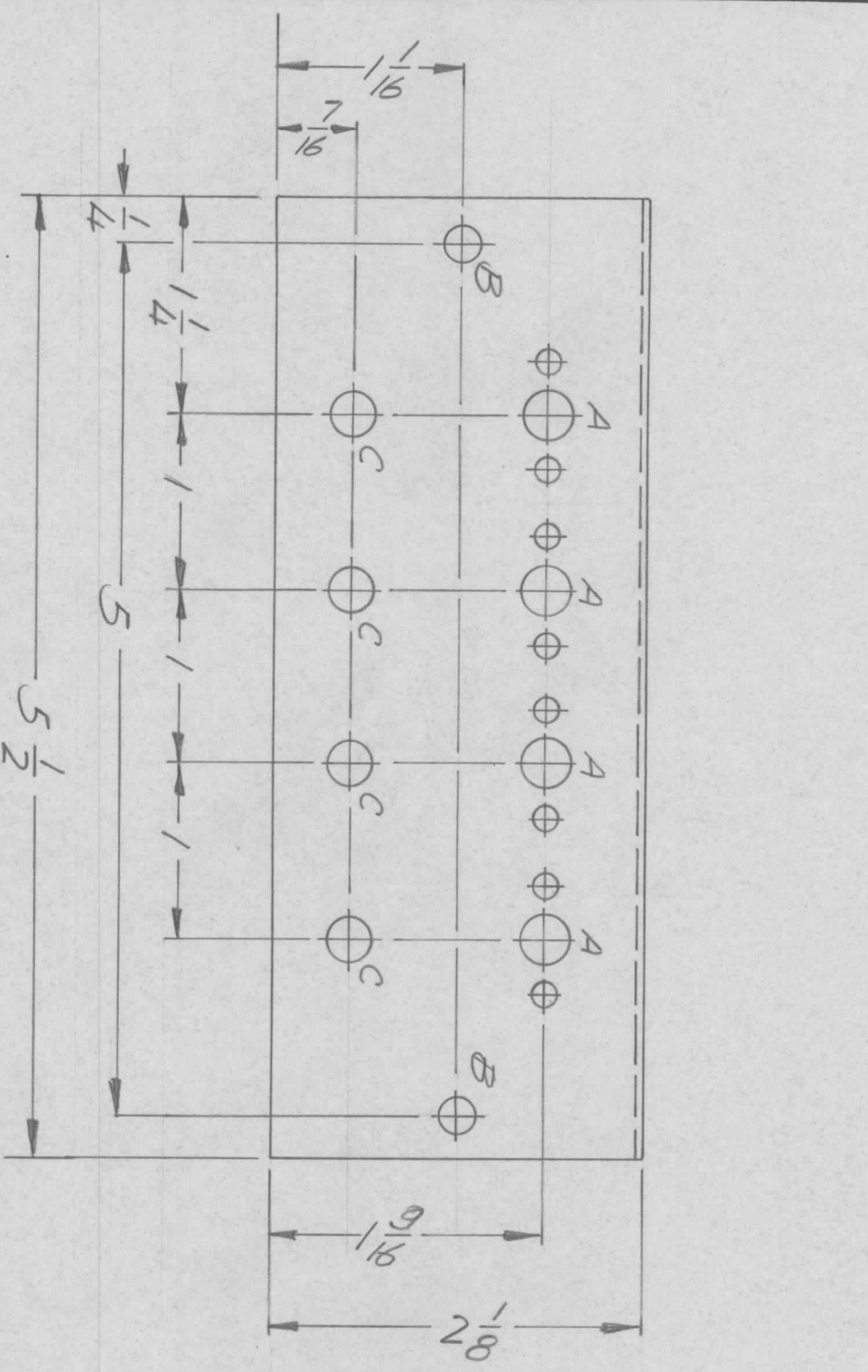
FINAL APPROVAL	DATE	DATE	DATE
MECH. DES.	<i>[Signature]</i>	2/28/72	
ELECT. DES.			
CHECKED			
DRAWN	G.E.	3/8/72	

NOTICE TO PERSONS RECEIVING THIS DRAWING

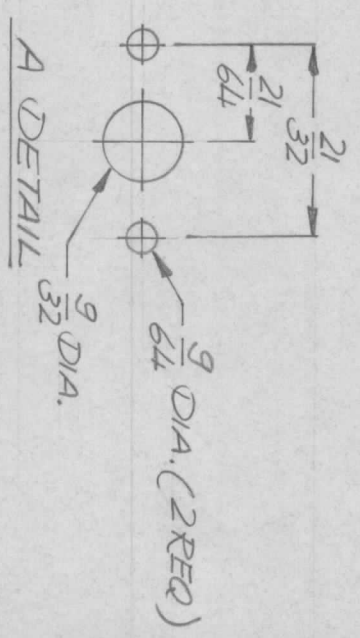
THE TECHNICAL MATERIEL CORPORATION claims proprietary right in the material disclosed hereon. This drawing is issued in confidence for engineering information only and may not be reproduced or used to manufacture anything shown hereon without permission from THE TECHNICAL MATERIEL CORPORATION to the user. This drawing is loaned for mutual assistance and is subject to recall at any time.

THE TECHNICAL MATERIEL CORP.	MAMARONECK, NEW YORK		
GRILL COVER, BLOWER			
SIZE	CODE IDENT. NO.	DWG NO.	ISSUE
B	82679	MS 6368	Φ
SCALE 1:1	SHEET	OF	

REVISIONS				DATE	APPROVED
E.M.N. NO.	DRAFT	CHKD	ZONE	LTR	DESCRIPTION
	QA			Ø	ORIGINAL RELEASE FOR PROD
					3/23/73



HOLE DESCRIPTION QTY.
 A — SEE DETAIL — 4
 B — 13/64 DIA. — 2
 C — 1/4 DIA. — 4



REQ'D ITEM	PART NUMBER	DESCRIPTION	SYM.
O. POSE			

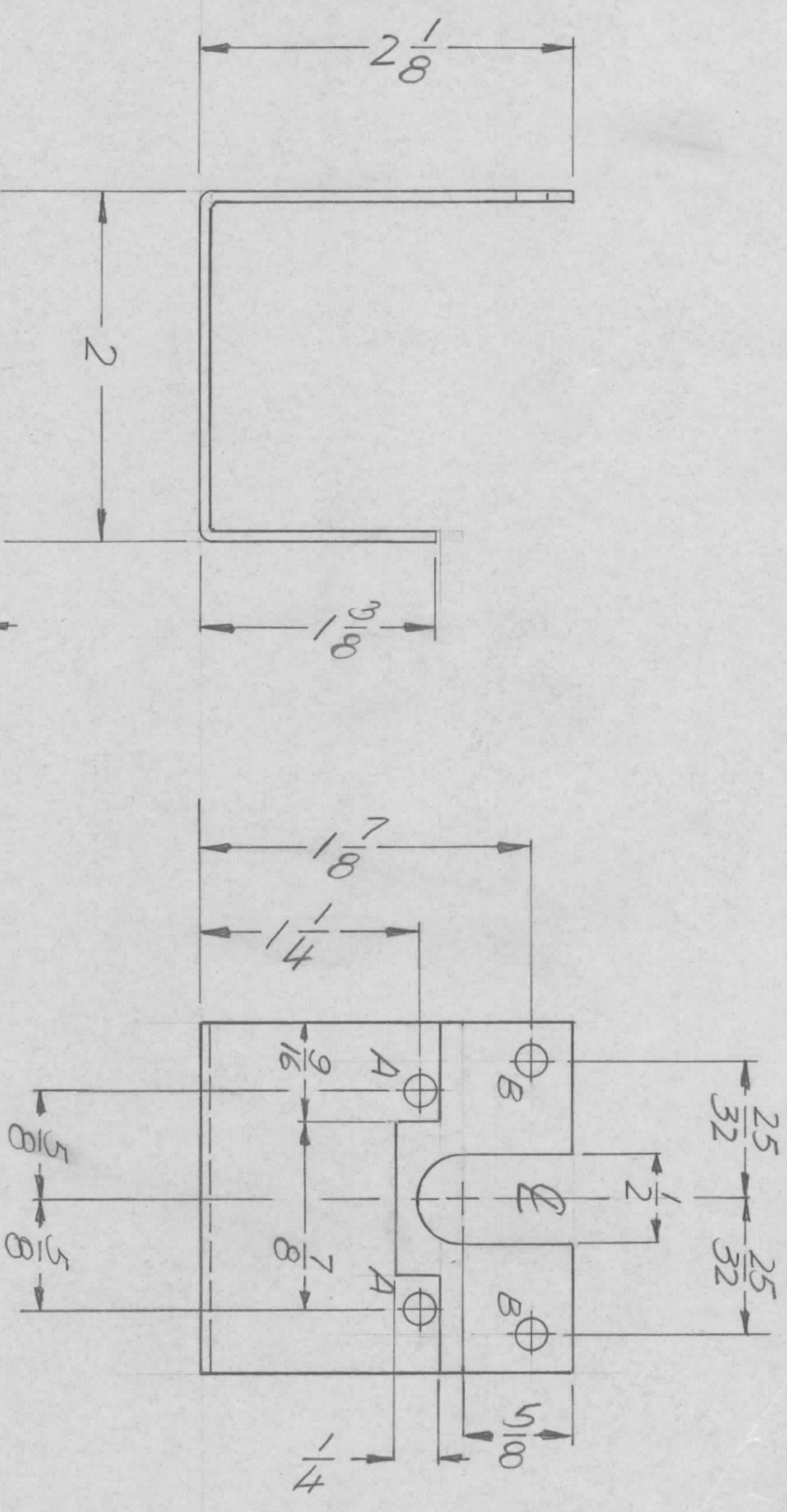
FINAL APPROVAL	DATE
<i>OP</i>	5/19/73
MECH. DES.	DATE
<i>JP</i>	5/17/73
ELECT. DES.	DATE
CHECKED	DATE
DRAWN	DATE
<i>GE</i>	8/1/72

LIST OF MATERIAL	
THE TECHNICAL MATERIEL CORP.	
MAMARONECK, NEW YORK	
BRACKET COIL MTG.	

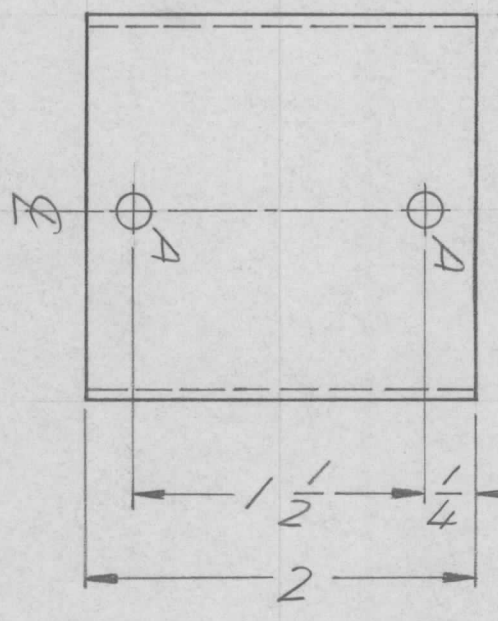
QTY / UNIT	MODEL USED ON	ASS'Y NO.
2	TM125	
APPLICATION		
CODE		

NOTICE TO PERSONS RECEIVING THIS DRAWING
 THE TECHNICAL MATERIEL CORPORATION claims proprietary right in the material disclosed hereon. This drawing is issued in confidence for engineering information only and may not be reproduced or used to manufacture anything shown hereon without permission from THE TECHNICAL MATERIEL CORPORATION to the user. This drawing is loaned for mutual assistance and is subject to recall at any time.

REVISIONS				DATE	APPROVED
EM.N. NO.	DRAFT	CHKD	ZONE	LTR	DESCRIPTION
				X	ADD 1/4 NOTCH (FRONT VIEW)
	SP			Ø	ORIGINAL RELEASE FOR PRODUCTION
					10-26-72



HOLE DESCRIPTION REQ.
 A - 11/64 DIA. — 4
 B - 9/64 DIA. — 2



QTY / UNIT	MODEL USED ON	ASSY NO.
	ATU-350	
APPLICATION		
CODE		

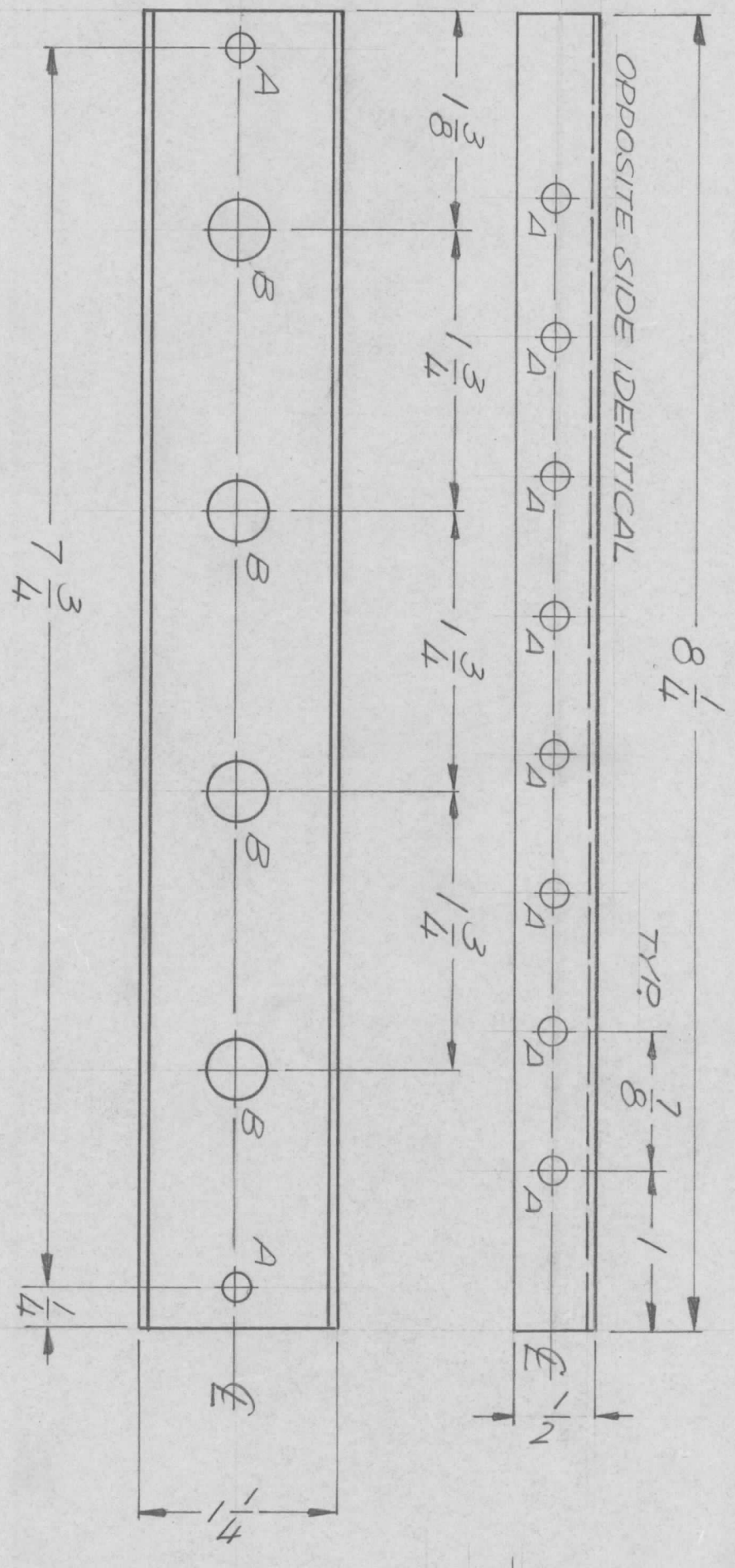
UNLESS OTHERWISE SPECIFIED DIMENSIONS ARE IN INCHES AND INCLUDE CHEMICALLY APPLIED OR PLATED FINISHES	
DECIMALS	FRACTIONS
.X ± .05	1/64
.XX ± .01	TOLS. ANGLES
.XXX ± .005	0° - 30'

FINAL APPROVAL	DATE
<i>F.B.</i>	9/11/72
MECH. DES.	DATE
	10-26-72
ELECT. DES.	DATE
CHECKED	DATE
DRAWN	DATE
GE	9/30/72

LIST OF MATERIAL		DESCRIPTION	SYM.
THE TECHNICAL MATERIEL CORP.			
MAMARONECK, NEW YORK			
BRACKET SWITCH MTG.			
SIZE	CODE IDENT. NO.	DWG NO.	
B	82679	M56385	
SCALE	1:1	SHEET	OF

NOTICE TO PERSONS RECEIVING THIS DRAWING
 THE TECHNICAL MATERIEL CORPORATION claims proprietary right in the material disclosed hereon. This drawing is issued in confidence for engineering information only and may not be reproduced or used to manufacture anything shown hereon without permission from THE TECHNICAL MATERIEL CORPORATION to the user. This drawing is loaned for mutual assistance and is subject to recall at any time.

REVISIONS							
EM.N NO.	DRAFT	CHKD	ZONE	LTR	DESCRIPTION	DATE	APPROVED
8					ORIGINAL RELEASE FOR PRODUCTION	10-26-72	



HOLE DESCRIPTION REQ.
 A — 11/64 DIA. — 18
 B — 3/8 DIA. — 4

REQ'D ITEM	PART NUMBER	DESCRIPTION	SYM.
F.B.		THE TECHNICAL MATERIEL CORP. MAMARONECK, NEW YORK	
LIST OF MATERIAL			
FINAL APPROVAL	DATE	THE TECHNICAL MATERIEL CORP. MAMARONECK, NEW YORK	
Mech. Des. <i>[Signature]</i>	10/24/72	SUPPORT, CAPACITOR	
Elect. Des.	DATE		
Checked	DATE		
Drawn <i>GE</i>	DATE		
MATERIAL .064		SIZE	CODE IDENT. NO.
ALUM 5052H32		B	82679
FINISH 5404 YEL. IRDITE		SCALE	1:1
DESCRIPTORS		DWG NO.	M/S 6386
QTY / UNIT 2		MODEL USED ON	ATU 350
APPLICATION		ASS'Y NO.	
CODE			

NOTICE TO PERSONS RECEIVING THIS DRAWING
 THE TECHNICAL MATERIEL CORPORATION claims proprietary right in the material disclosed hereon. This drawing is issued in confidence for engineering information only and may not be reproduced or used to manufacture anything shown hereon without permission from THE TECHNICAL MATERIEL CORPORATION to the user. This drawing is loaned for mutual assistance and is subject to recall at any time.

