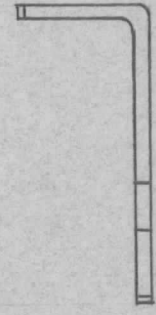
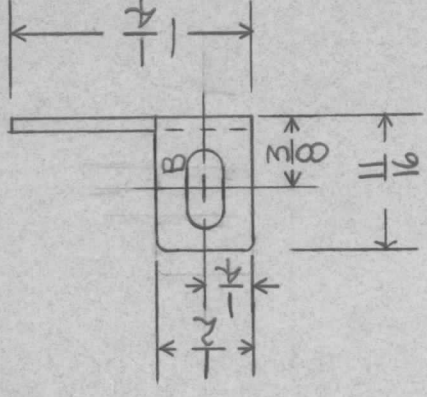
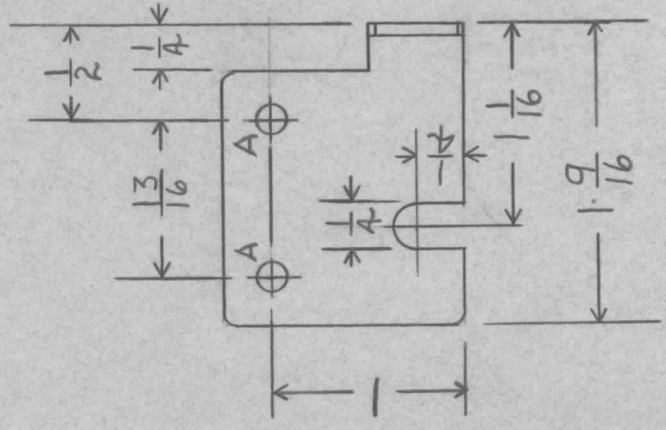


REVISIONS

QTY	MODEL USED ON	ASSY NO.	LTR	DESCRIPTION	DATE	E.M.N.NO	DRAFT	CHKD	APPD
1	TLAA-1K	AS160	Ø	ORIG RELEASE FOR PROD	11/30/70		CV		



HOLE	DESCRIPTION	QTY
A	1/16 DIA.	2
B	13/16 X 13/32 SL	1

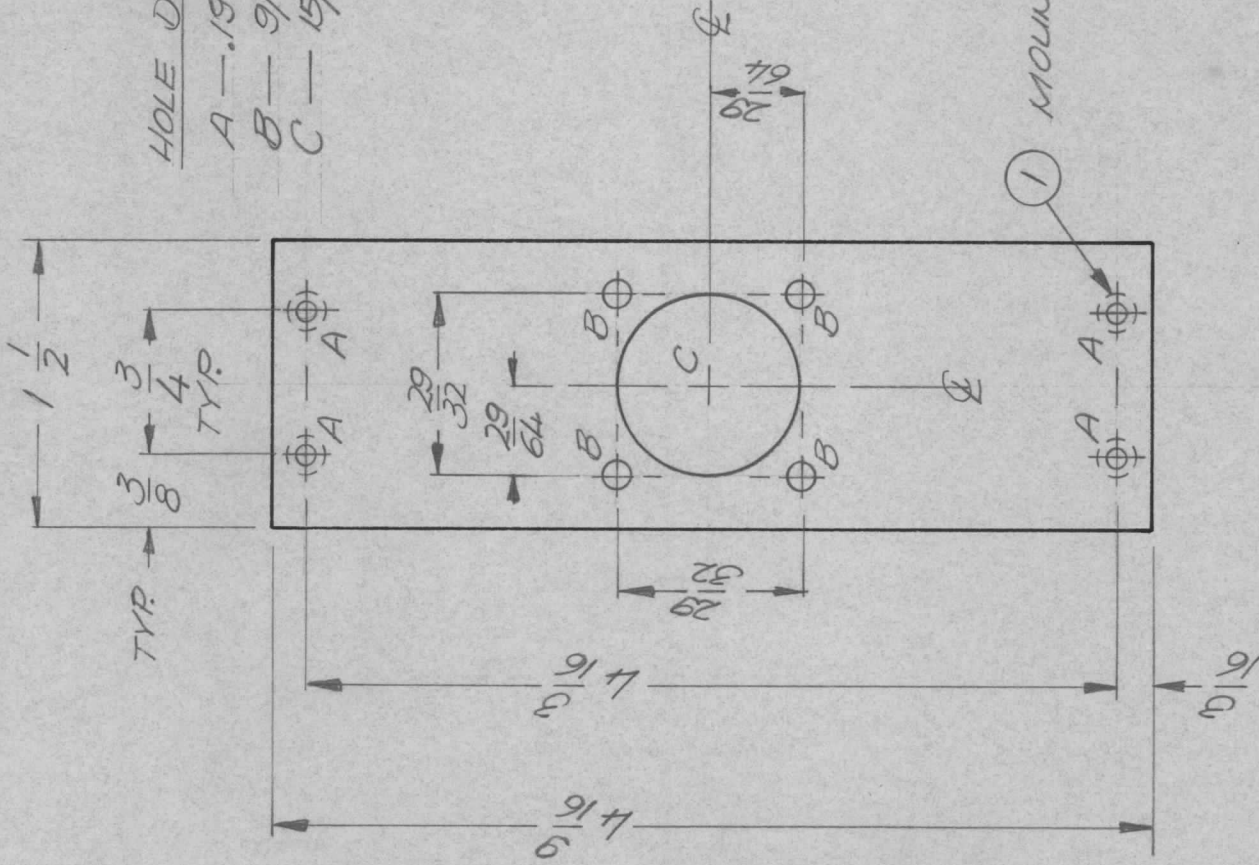
NOTE:  
 ROUND ALL CORNERS.  
 REMOVE ALL BURRS.

UNLESS OTHERWISE SPECIFIED DIMENSIONS ARE IN INCHES AND INCLUDE CHEMICALLY APPLIED OR PLATED FINISHES	REQ'D	ITEM	PART NUMBER	DESCRIPTION	SYM.
DECIMALS				LIST OF MATERIAL	
FRACTIONS				THE TECHNICAL MATERIEL CORP.	
.X ± .05				MAMARONECK, NEW YORK	
.XX ± .01				BRACKET, CAP. MTG	
.XXX ± .005					
TOLS. 1/64					
ANGLES 0°-30°					
MATERIAL .063 ALUM					
5052-H32					
FINISH S404					
VEL. IRIBITE					
FINAL APPROVAL					
MECH. DES.					
ELECT. DES.					
CHECKED					
DRAWN					
DATE 11-24-71					
DATE 11-24-71					
DATE 11-24-71					
DATE 11-24-71					
DATE 11-24-71					
SIZE A	CODE IDENT. NO. 82679	DWG NO. MS 6310	ISSUE		
SCALE			SHEET		OF

NOTICE TO PERSONS RECEIVING THIS DRAWING  
 THE TECHNICAL MATERIEL CORPORATION claims proprietary right in the material disclosed hereon. This drawing is issued in confidence for engineering information only and may not be reproduced or used to manufacture anything shown hereon without permission from THE TECHNICAL MATERIEL CORPORATION to the user. This drawing is loaned for mutual assistance and is subject to recall at any time.

APPLICATION			REVISIONS						
QTY	MODEL USED ON	ASS'Y NO.	LTR	DESCRIPTION	DATE	E.M.N.NO	DRAFT	CHKD	APPD
1	METRJOKE	AX5157	Ø	ORIG RELEASE FOR PROD	1/13/70		CV		

HOLE DESCRIPTION REQ.  
 A — .191 — .194 DIA. — 4  
 B — 9/64 DIA. — 4  
 C — 15/16 DIA. — 1



REQ'D ITEM	PART NUMBER	DESCRIPTION	SYMBOL
4	NUT 129-06324	NUT, ROUND	A

LIST OF MATERIAL	
THE TECHNICAL MATERIEL CORP. MAMARONECK, NEW YORK	
BRKT. CONN. A.C.	

DATE	DATE	DATE	DATE	DATE
12 Jan 72	1-12-72			1/13/70

FINAL APPROVAL	MECH. DES.	ELECT. DES.	CHECKED	DRAWN
<i>[Signature]</i>	A.P.			GE

UNLESS OTHERWISE SPECIFIED DIMENSIONS ARE IN INCHES AND INCLUDE CHEMICALLY APPLIED OR PLATED FINISHES

DECIMALS  
 .X ± .05  
 .XX ± .01  
 .XXX ± .005

FRACTIONS  
 1/64  
 ANGLES  
 0° - 30°

MATERIAL .064 ALUM  
 5052 H32

FINISH 5404  
 YEL IRIDITE

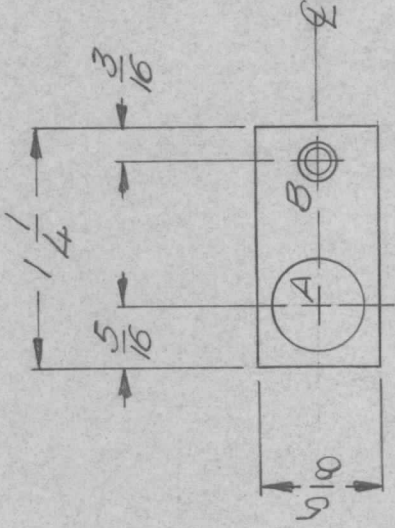
NOTICE TO PERSONS RECEIVING THIS DRAWING  
 THE TECHNICAL MATERIEL CORPORATION claims proprietary right in the material disclosed hereon. This drawing is issued in confidence for engineering information only and may not be reproduced or used to manufacture anything shown hereon without permission from THE TECHNICAL MATERIEL CORPORATION to the user. This drawing is loaned for mutual assistance and is subject to recall at any time.

SIZE	CODE IDENT. NO.	DWG NO.	ISSUE
A	82679	MAS 6314	Ø

SCALE	SHEET	OF
1:1		

APPLICATION		REVISIONS							
QTY	MODEL USED ON	ASS'Y NO.	LTR	DESCRIPTION	DATE	E.M.N.NO	DRAFT	CHKD	APPL
1	MFTRIOKES	AX5157	Ø	ORIG RELEASE FOR PROD	1/19/72		CV		



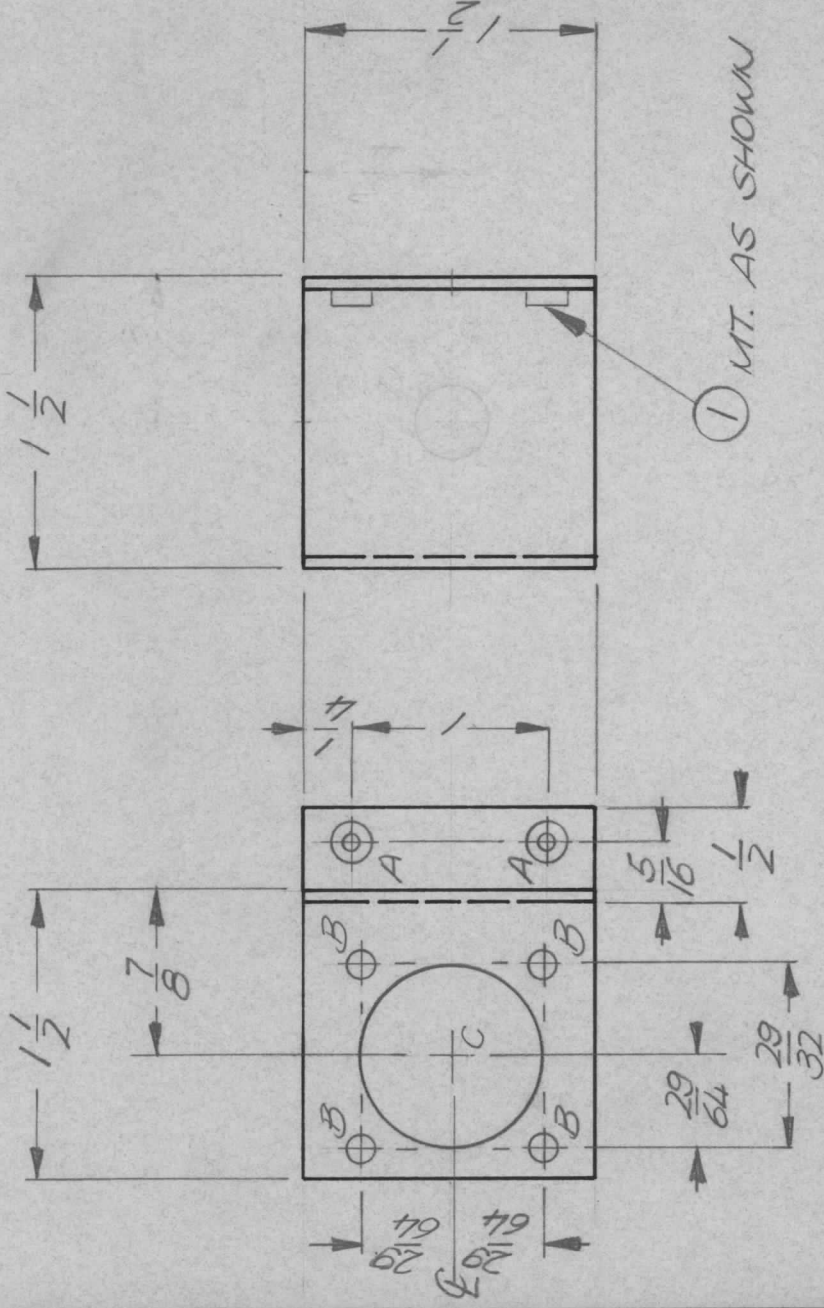
HOLE A - 15/32 DIA. - 1 REQ.  
HOLE B - 0440 C'SNK - 1 REQ.

REQ'D	ITEM	PART NUMBER	DESCRIPTION	SYM.
S.D.				
FINAL APPROVAL	<i>[Signature]</i>		LIST OF MATERIAL	
MECH. DES.	A.P.		THE TECHNICAL MATERIEL CORP.	
ELECT. DES.			MAMARONECK, NEW YORK	
CHECKED				
DRAWN	GE		BRKT. RESISTOR, MTG	
UNLESS OTHERWISE SPECIFIED DIMENSIONS ARE IN INCHES AND INCLUDE CHEMICALLY APPLIED OR PLATED FINISHES		SIZE		
DECIMALS	X ± .05	CODE IDENT. NO.	A 82679	DWG NO.
FRACTIONS	.XX ± .01	SCALE	1/16	SHEET
TOLS.	.XXX ± .005			OF
ANGLES	1/64			
°	0° - 30°			
MATERIAL. 0644 ALLUM. 5052 H. 32 FINISH S404 YEL. IRIDITE				
NOTICE TO PERSONS RECEIVING THIS DRAWING THE TECHNICAL MATERIEL CORPORATION claims proprietary right in the material disclosed hereon. This drawing is issued in confidence for engineering information only and may not be reproduced or used to manufacture anything shown hereon without permission from THE TECHNICAL MATERIEL CORPORATION to the user. This drawing is loaned for mutual assistance and is subject to recall at any time.				
DATE		ISSUE		
DATE	12/14/72	Ø		
DATE	1-12-72			
DATE				
DATE				
DATE	1/30/71			

REVISIONS

APPLICATION

QTY	MODEL USED ON	ASS'Y NO.	LTR	DESCRIPTION	DATE	E.M.N.NO	DRAFT	CHKD	APPD
1	MFTR10KE5	AX5156	Ø	ORIG RELEASE FOR PROD	1/3/72		CV		



HOLE DESCRIPTION REQ.

- A — .191 DIA. — 2
- B — 9/64 DIA. — 4
- C — 15/16 DIA. — 1

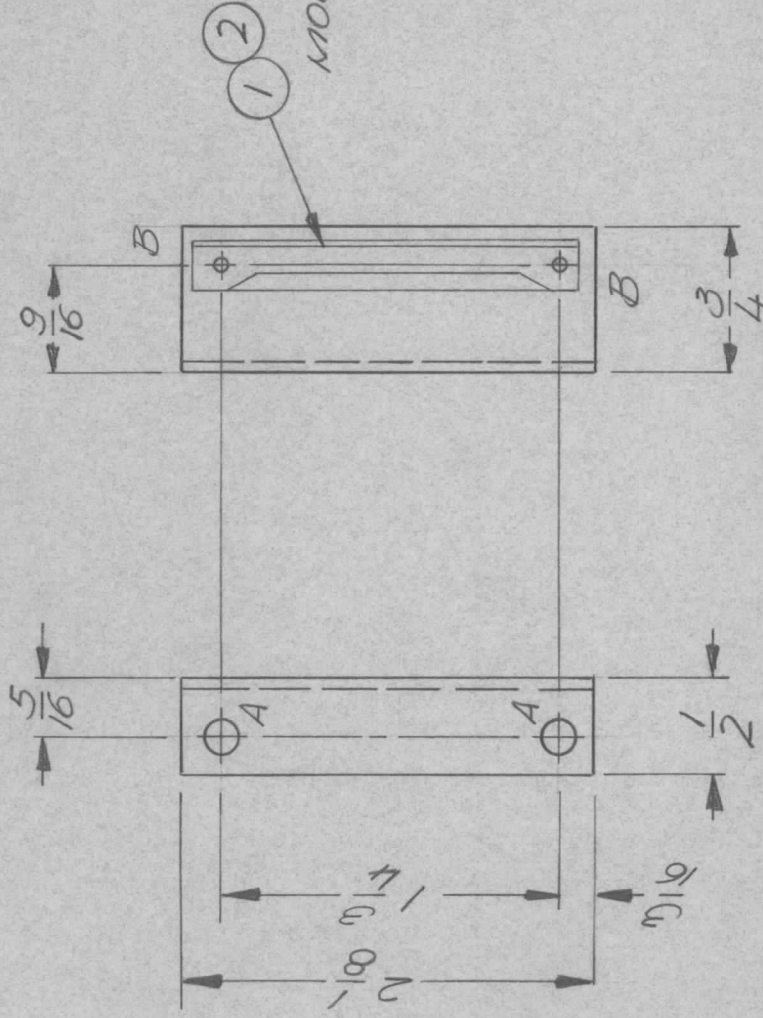
2	1	KT129-0632-4	NUT, ROUND	A
LIST OF MATERIAL				
THE TECHNICAL MATERIEL CORP. MAMARONECK, NEW YORK				
BRACKET, MTG. AC COMM.				
NOTICE TO PERSONS RECEIVING THIS DRAWING				
THE TECHNICAL MATERIEL CORPORATION claims proprietary right in the material disclosed hereon. This drawing is issued in confidence for engineering information only and may not be reproduced or used to manufacture anything shown hereon without permission from THE TECHNICAL MATERIEL CORPORATION to the user. This drawing is loaned for mutual assistance and is subject to recall at any time.				
UNLESS OTHERWISE SPECIFIED DIMENSIONS ARE IN INCHES AND INCLUDE CHEMICALLY APPLIED OR PLATED FINISHES				
DECIMALS FRACTIONS				
.X ± .05 TOLS. 1/64				
.XX ± .01 ANGLES 0°-30'				
.XXX ± .005				
MATERIAL .081 ALUM				
5052-H32				
FINISH S404				
YEL. IRIDITE				
FINAL APPROVAL <i>[Signature]</i> DATE 12/24/72				
MECH. DES. A.P. DATE 1-12-72				
ELECT. DES. DATE				
CHECKED DATE				
DRAWN G. EVANGELIST DATE 12/24/72				
REQ'D ITEM	PART NUMBER	DESCRIPTION	SYM.	
S.D.				

SIZE	CODE IDENT. NO.	DWG NO.	ISSUE
A	82679	MS 6317	Ø
SCALE 1:1	SHEET	OF	

## APPLICATION

## REVISIONS

QTY	MODEL USED ON	ASS'Y NO.	LTR	DESCRIPTION	DATE	E.M.N.NO	DRAFT	CHKD	APPD
1	MFTR 10KES	AX5157	Ø	ORIG RELEASE FOR PROD	4/13/70		CV		

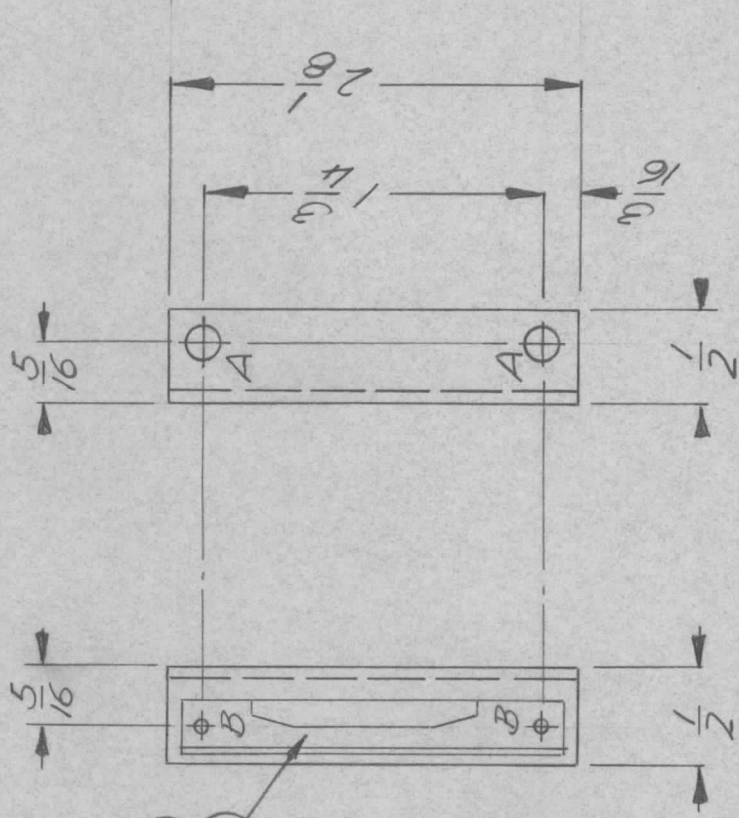


A HOLES - 1/64 DIA. - 2 REQ.

B HOLES - .067 DIA. - 2 REQ.

QTY	MODEL USED ON	ASS'Y NO.	LTR	DESCRIPTION	DATE	E.M.N.NO	DRAFT	CHKD	APPD
2	EY100			EYELET					B
1	CU157-2			RETAINER					
REQ'D ITEM	PART NUMBER	DESCRIPTION	LIST OF MATERIAL						
5.D.			THE TECHNICAL MATERIEL CORP. MAMARONECK, NEW YORK						
FINAL APPROVAL	DATE	BRACKET CLIP MTG. RIGHT							
ALP.	12/14/72	SIZE	CODE IDENT. NO.	DWG NO.	ISSUE				
ELECT. DES.	1-3-72	A	82679	MAS6319	Ø				
CHECKED	DATE	SCALE	1:1		SHEET	OF			
DRAWN	DATE								
GE	12/17/71								
NOTICE TO PERSONS RECEIVING THIS DRAWING THE TECHNICAL MATERIEL CORPORATION claims proprietary right in the material disclosed hereon. This drawing is issued in confidence for engineering information only and may not be reproduced or used to manufacture anything shown hereon without permission from THE TECHNICAL MATERIEL CORPORATION to the user. This drawing is loaned for mutual assistance and is subject to recall at any time.									
UNLESS OTHERWISE SPECIFIED DIMENSIONS ARE IN INCHES AND INCLUDE CHEMICALLY APPLIED OR PLATED FINISHES									
DECIMALS	FRACTIONS								
.X ± .05	1/64								
.XX ± .01	TOLS.								
.XXX ± .005	ANGLES								
	0° - 30°								
MATERIAL: 064 ALUM 5052 H 32									
FINISH 5404 YEL. IRIDITE									

APPLICATION			REVISIONS						
QTY	MODEL USED ON	ASSY NO.	LTR	DESCRIPTION	DATE	E.M.N.NO	DRAFT	CHKD	APPD
1	MFTRIKES5	AX5157	Ø	ORIG RELEASE FOR PROD	1/13/72		CV		



1  
MOUNT AS  
SHOWN

2

A HOLES 11/64 DIA. 2 REQ.  
B HOLES .067 DIA. 2 REQ.

REQ'D	ITEM	PART NUMBER	DESCRIPTION	SYM.
2	2	EY 100-1	EYELET	B
1	1	CU157-2	RETAINER	

### LIST OF MATERIAL

THE TECHNICAL MATERIEL CORP.  
MAMARONECK, NEW YORK

BRACKET CLIP MTG. LEFT

UNLESS OTHERWISE SPECIFIED  
DIMENSIONS ARE IN INCHES  
AND INCLUDE CHEMICALLY APPLIED  
OR PLATED FINISHES

DECIMALS  
X ± .05  
.XX ± .01  
.XXX ± .005

FRACTIONS  
1/64  
TOLS.  
ANGLES  
0° - 30'

MATERIAL .064 ALUM  
5052 H-32

FINISH S404  
YEL. IRIDITE

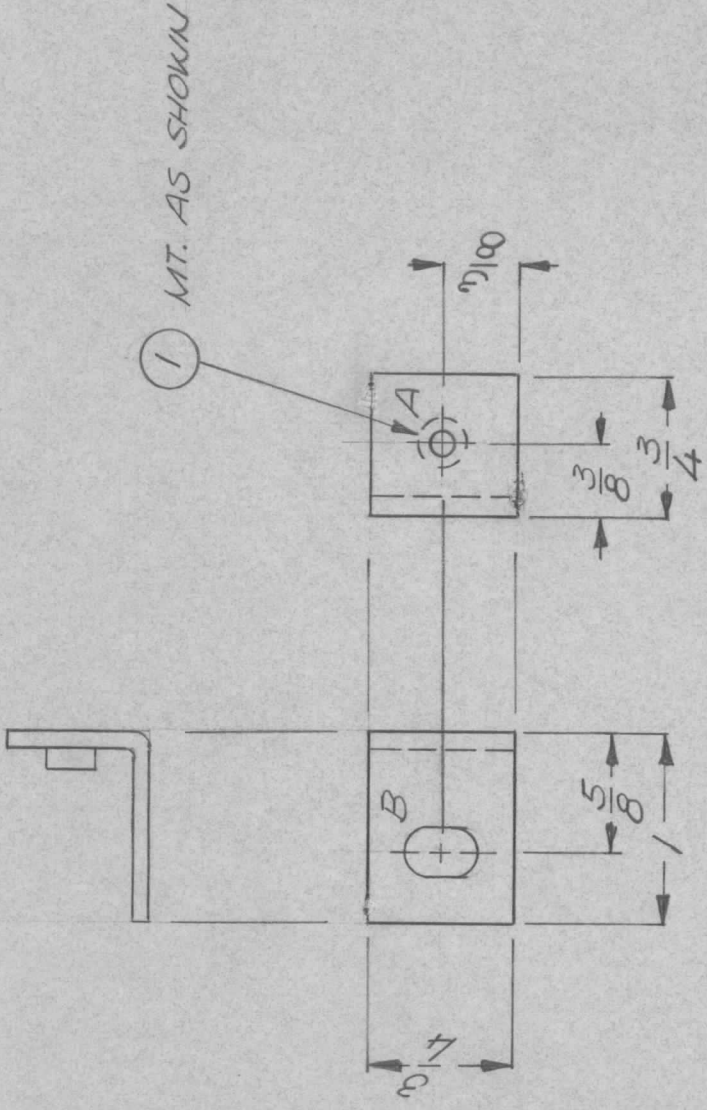
FINAL APPROVAL	DATE
ALP	12/17/72
MECH. DES.	DATE
ALP	1-3-72
ELECT. DES.	DATE
CHECKED	DATE
DRAWN	DATE
GE	12/17/72

### NOTICE TO PERSONS RECEIVING THIS DRAWING

THE TECHNICAL MATERIEL CORPORATION claims proprietary right in the material disclosed hereon. This drawing is issued in confidence for engineering information only and may not be reproduced or used to manufacture anything shown hereon without permission from THE TECHNICAL MATERIEL CORPORATION to the user. This drawing is loaned for mutual assistance and is subject to recall at any time.

SIZE	CODE IDENT. NO.	DWG NO.	ISSUE
A	82679	MS6320	Ø
SCALE	SHEET	OF	
1:1			

APPLICATION			REVISIONS						
QTY	MODEL USED ON	ASS'Y NO.	LTR	DESCRIPTION	DATE	E.M.N.NO	DRAFT	CHKD	APPD
1	MFR10KE	AX5140	Ø	ORIG RELEASE FOR PROD	1/20/72		CV		



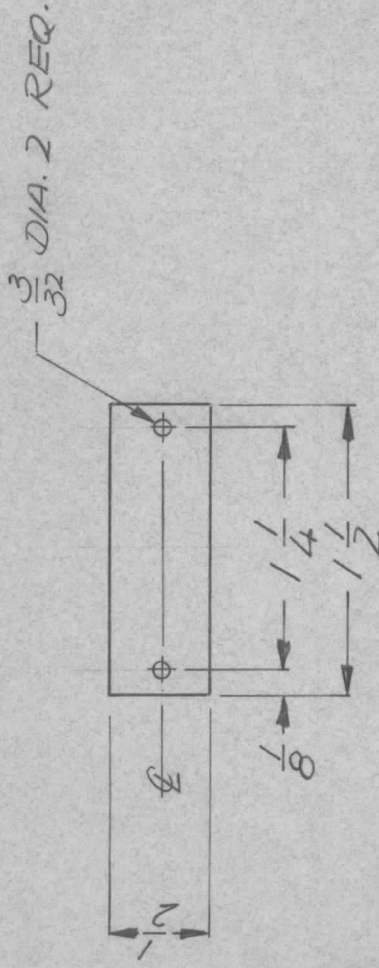
A HOLE - .251" - .254 DIA. - 1 REQ.  
 B HOLE - 1/4" X 3/8" SLOT - 1 REQ.

REQ'D ITEM	PART NUMBER	DESCRIPTION	SYMBOL
1	NT129-1032-6	NUT, ROUND	A
LIST OF MATERIAL			
THE TECHNICAL MATERIEL CORP. MAMARONECK, NEW YORK			
BRKT. MTG. PROT. COVER			

SIZE	CODE IDENT. NO.	DWG NO.	ISSUE
A	82679	MS 6328	Ø
SCALE	SHEET	OF	

NOTICE TO PERSONS RECEIVING THIS DRAWING  
 THE TECHNICAL MATERIEL CORPORATION claims proprietary right in the material disclosed hereon. This drawing is issued in confidence for engineering information only and may not be reproduced or used to manufacture anything shown hereon without permission from THE TECHNICAL MATERIEL CORPORATION to the user. This drawing is loaned for mutual assistance and is subject to recall at any time.

APPLICATION		REVISIONS							
QTY	MODEL USED ON	ASSY NO.	LTR	DESCRIPTION	DATE	E.M.N.NO	DRAFT	CHKD	APPD
1	MFTR 10KE	AX5142	Ø	ORIG RELEASE FOR PROD	11/15/72		CV		



SMOOTH EDGES & ROUND CORNERS

REF. L.D. 2508

FINISH NOTES:

- S404 - IRIDITE 14-2 AL-COAT.
- S114 - ZINC CHROMATE PRIMER } FRONT AND
- S115 - SMOOTH GRAY ENAMEL } EDGES ONLY

OR  
PRIME AND PAINT PER CUSTOMER'S SPECIFICATIONS

UNLESS OTHERWISE SPECIFIED  
DIMENSIONS ARE IN INCHES  
AND INCLUDE CHEMICALLY APPLIED  
OR PLATED FINISHES

DECIMALS FRACTIONS  
.X ± .05 TOLS. 1/64  
.XX ± .01 ANGLES 0°-30'  
.XXX ± .005

MATERIAL: 030 ALUM  
5052 H32

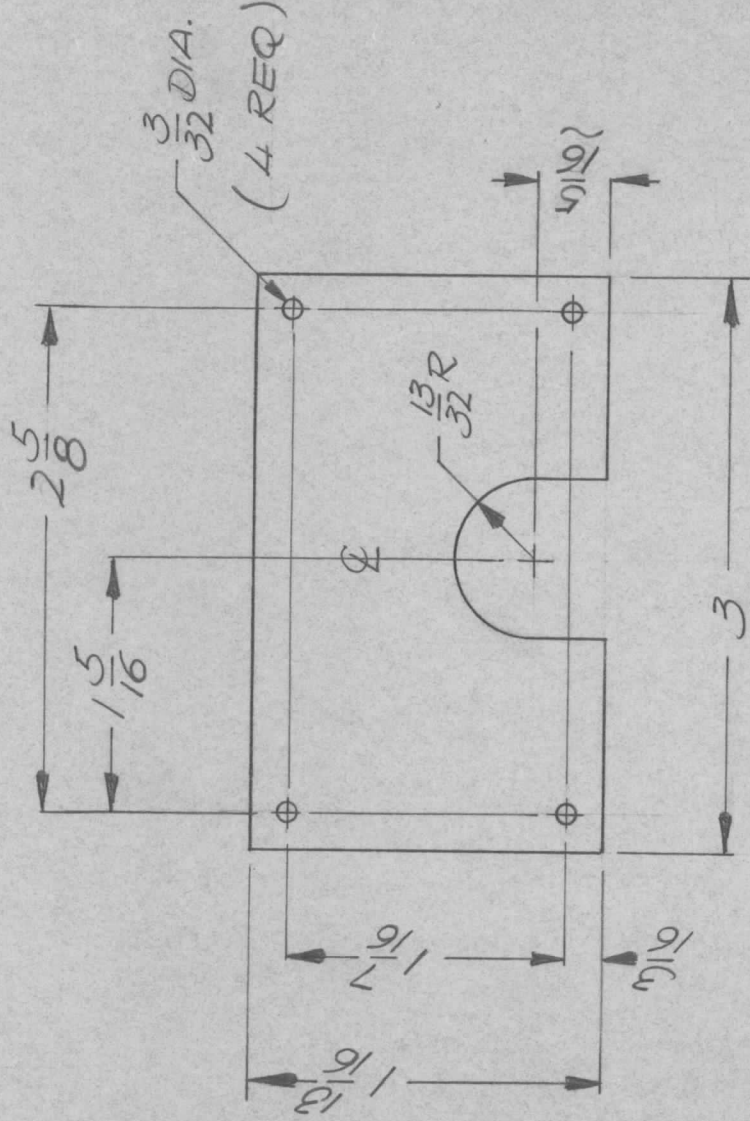
FINISH AS NOTED

REQ'D	ITEM	PART NUMBER	DESCRIPTION	SYM.
LIST OF MATERIAL				
THE TECHNICAL MATERIEL CORP. MAMARONECK, NEW YORK				
FINAL APPROVAL	<i>JSM</i>	DATE	4/24/72	
MECH. DES.	<i>JSM</i>	DATE	4/24/72	
ELECT. DES.		DATE		
CHECKED		DATE		
DRAWN	<i>GE</i>	DATE	12/5/71	
SIZE	A	CODE IDENT. NO.	82679	ISSUE
SCALE	1:1	DWG NO.	MS 6332	Ø
			TUNE PLATE	OF

NOTICE TO PERSONS RECEIVING THIS DRAWING  
THE TECHNICAL MATERIEL CORPORATION claims proprietary right in the material disclosed hereon. This drawing is issued in confidence for engineering information only and may not be reproduced or used to manufacture anything shown hereon without permission from THE TECHNICAL MATERIEL CORPORATION to the user. This drawing is loaned for mutual assistance and is subject to recall at any time.



QTY	MODEL USED ON	ASSY NO.	LTR	DESCRIPTION	DATE	E.M.N.NO	DRAFT	CHKD	APPD
	HFTM-10K		Ø	ORIGINAL RELEASE	5/3/73		C.S.		



**FINISH NOTES:**

1. S404 - IRIDITE 14-2 AL-COAT.
  2. S114 - ZINC CHROMATE PRIMER } FRONT AND
  3. S115 - SMOOTH GRAY ENAMEL } EDGES ONLY
- OR  
PRIME AND PAINT PER CUSTOMER'S SPECIFICATIONS

REF. LD 3004

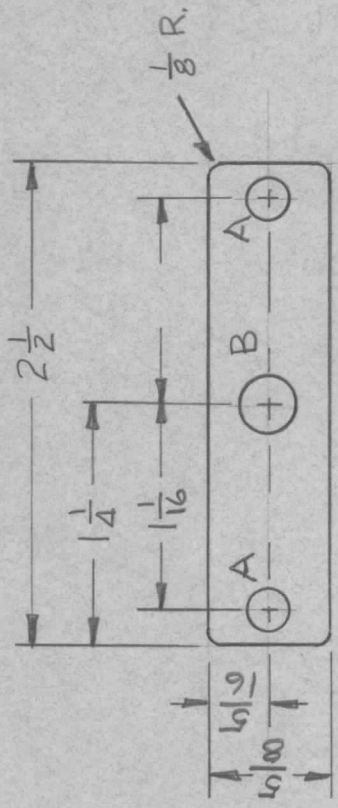
UNLESS OTHERWISE SPECIFIED DIMENSIONS ARE IN INCHES AND INCLUDE CHEMICALLY APPLIED OR PLATED FINISHES	REQ'D ITEM	PART NUMBER	DESCRIPTION	SYM.
DECIMALS .X ± .05 .XX ± .01 .XXX ± .005	F.B.		LIST OF MATERIAL	
FRACTIONS 1/64	FINAL APPROVAL		THE TECHNICAL MATERIEL CORP.	
TOLS. ANGLES 0° - 30'	Mech. DES.	DATE	MAMARONECK, NEW YORK	
MATERIAL .064 ALUM.	ELECT. DES.	DATE	TUNE PLATE	
FINISH AS NOTED	CHECKED	DATE		
	DRAWN	DATE		
NOTICE TO PERSONS RECEIVING THIS DRAWING		DATE		
THE TECHNICAL MATERIEL CORPORATION claims proprietary right in the material disclosed hereon. This drawing is issued in confidence for engineering information only and may not be reproduced or used to manufacture anything shown hereon without permission from THE TECHNICAL MATERIEL CORPORATION to the user. This drawing is loaned for mutual assistance and is subject to recall at any time.		DATE		
SIZE	CODE IDENT. NO.	DWG NO.	ISSUE	
A	82679	MAS 6341	Ø	
SCALE	1:1	SHEET	OF	

APPLICATION

QTY	MODEL USED ON	ASS'Y NO.	LTR
1	HFLA-10K	AX743	Ø
1	HFLM-10K	AX743-2	

REVISIONS

DESCRIPTION	DATE	E.M.N.NO	DRAFT	CHKD	APPD
Ø ORIG RELEASE FOR PROD	3/2/72		W		



SMOOTH ALL EDGES.

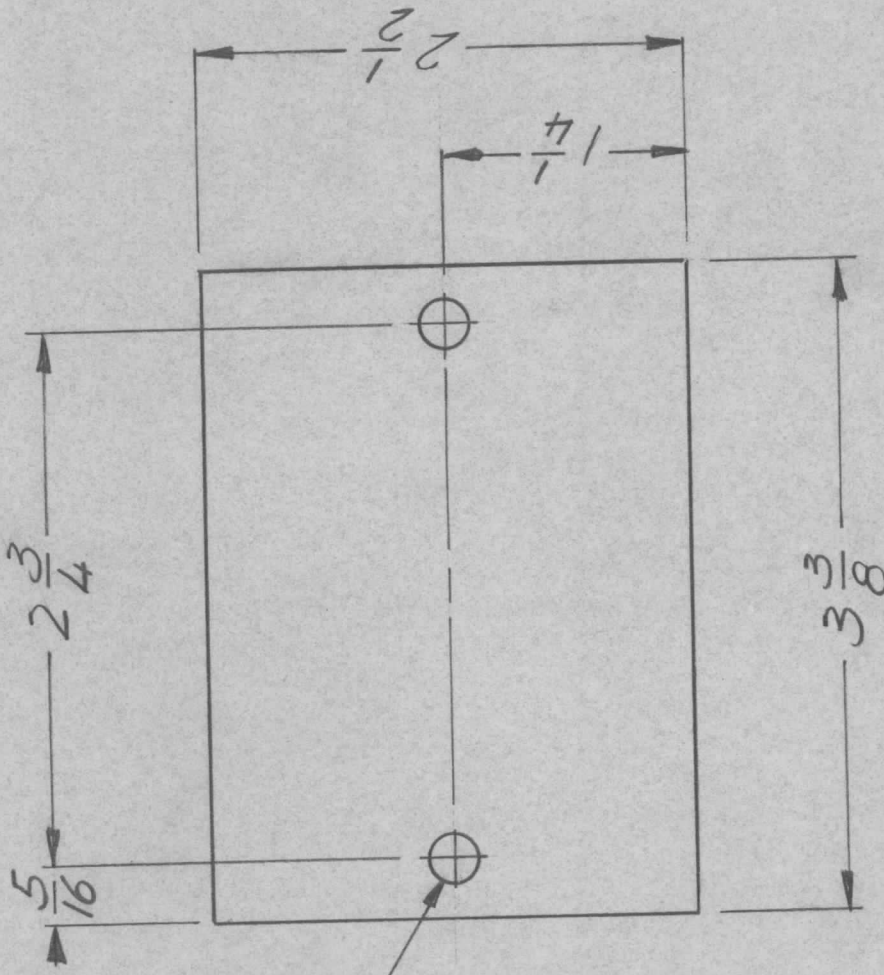
A ~ 13/64 DIA. 2 REQ'D.  
 B ~ 9/32 DIA. 1 REQ'D

UNLESS OTHERWISE SPECIFIED DIMENSIONS ARE IN INCHES AND INCLUDE CHEMICALLY APPLIED OR PLATED FINISHES	REQ'D	ITEM	PART NUMBER	DESCRIPTION	SYM.
	LIST OF MATERIAL				
DECIMALS	THE TECHNICAL MATERIEL CORP.				
X ± .05	MAMARONECK, NEW YORK				
.XX ± .01	BAR, FILA.				
.XXX ± .005	SIZE A				
ANGLES	CODE IDENT. NO. MS6344				
0°-30°	SCALE				
MATERIAL 1/8 ALUM	DWG NO. MS6344				
5052-H32	OF				
FINISH	SHEET				
S404 YEL IRID	DATE 3/2/72				
	DATE 3/2/72				
	DATE 3/2/72				
	DATE 3/2/72				
	DATE 3/2/72				

NOTICE TO PERSONS RECEIVING THIS DRAWING  
 THE TECHNICAL MATERIEL CORPORATION claims proprietary right in the material disclosed hereon. This drawing is issued in confidence for engineering information only and may not be reproduced or used to manufacture anything shown hereon without permission from THE TECHNICAL MATERIEL CORPORATION to the user. This drawing is loaned for mutual assistance and is subject to recall at any time.

REVISIONS

APPLICATION		DESCRIPTION		REVISIONS				
QTY	MODEL USED ON	ASS'Y NO.	LTR	DATE	E.M.N.NO	DRAFT	CHKD	APPD
2	AX5143		Ø	3/19/73		Q		
				Ø ORIG. RELEASE FOR PROD.				



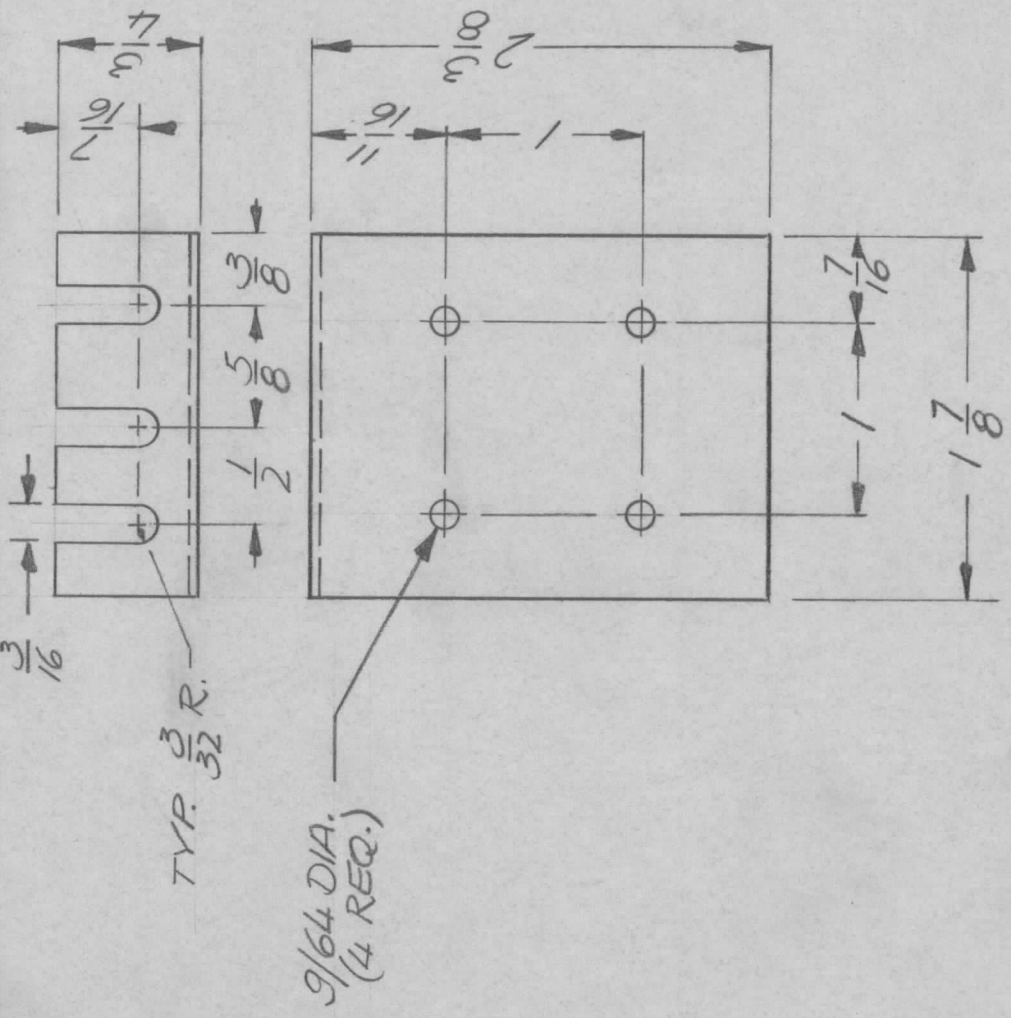
1/4 DIA.  
2 REQ.

FINISH NOTES:

1. S404 - IRIDITE 14-2 AL-COAT.
  2. S114 - ZINC CHROMATE PRIMER
  3. S520-BLUE GRAY TEXTURED VINYL OR
- FRONT AND EDGES ONLY
- PRIME AND PAINT PER CUSTOMER'S SPECIFICATIONS

REQ'D ITEM	PART NUMBER	DESCRIPTION	SYM.
LIST OF MATERIAL			
F.B.			
FINAL APPROVAL	DATE	THE TECHNICAL MATERIEL CORP.	
<i>[Signature]</i>	3/23/73	MAMARONECK, NEW YORK	
MECH. DES.	DATE	PLATE, COVER	
AL PETROCCA	3-17-72		
ELECT. DES.	DATE	SIZE	CODE IDENT. NO.
CHECKED	DATE	A	82679
DRAWN	DATE	SCALE	DWG NO.
GE	2/1/72	1:1	MS6345
NOTICE TO PERSONS RECEIVING THIS DRAWING		SIZE	ISSUE
THE TECHNICAL MATERIEL CORPORATION claims proprietary right in the material disclosed hereon. This drawing is issued in confidence for engineering information only and may not be reproduced or used to manufacture anything shown hereon without permission from THE TECHNICAL MATERIEL CORPORATION to the user. This drawing is loaned for mutual assistance and is subject to recall at any time.		A	Ø

APPLICATION		REVISIONS							
QTY	MODEL USED ON	ASS'Y NO.	LTR	DESCRIPTION	DATE	E.M.N.NO	DRAFT	CHKD	APPD
3	RAK 138-1A		Ø	ORIG RELEASE FOR PROD	3/30/72		CV		



REQ'D ITEM	PART NUMBER	DESCRIPTION	SYM.
LIST OF MATERIAL			
THE TECHNICAL MATERIEL CORP. MAMARONECK, NEW YORK			
BRACKET, SWITCH MTG. (INTERLOCK)			
SIZE	CODE IDENT. NO.	DWG NO.	ISSUE
A	82679	MS 6354	Ø
SCALE 1:1		SHEET 1	OF 1

UNLESS OTHERWISE SPECIFIED DIMENSIONS ARE IN INCHES AND INCLUDE CHEMICALLY APPLIED OR PLATED FINISHES

DECIMALS FRACTIONS  
 .X ± .05 TOLS. 1/64  
 .XX ± .01 ANGLES 0° - 30'  
 .XXX ± .005

MATERIAL: 064 ALUM.  
5052 H32

FINISH 5404  
YEL. IRIDITE

DATE 3/21/72  
 DATE 4-19-72  
 DATE  
 DATE  
 DATE

FINAL APPROVAL: [Signature]  
 MECH. DES. [Signature]  
 ELECT. DES.  
 CHECKED  
 DRAWN G.E.

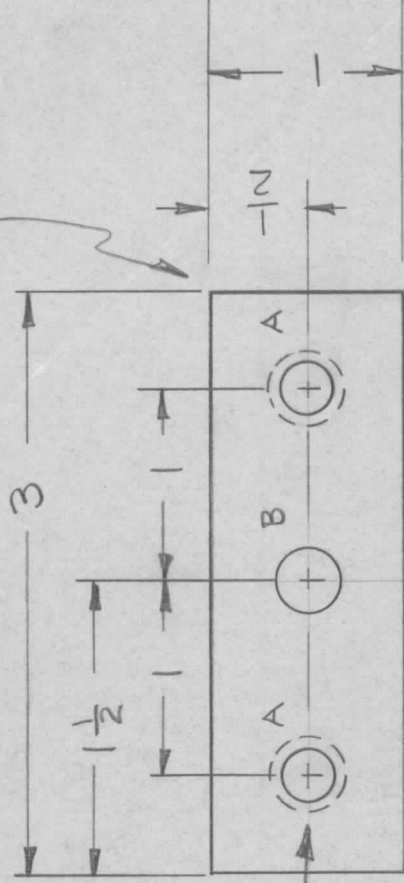
NOTICE TO PERSONS RECEIVING THIS DRAWING  
 THE TECHNICAL MATERIEL CORPORATION claims proprietary right in the material disclosed hereon. This drawing is issued in confidence for engineering information only and may not be reproduced or used to manufacture anything shown hereon without permission from THE TECHNICAL MATERIEL CORPORATION to the user. This drawing is loaned for mutual assistance and is subject to recall at any time.

REVISIONS

APPLICATION

QTY	MODEL USED ON	ASS'Y NO.	LTR	DESCRIPTION	DATE	E.M.N.NO	DRAFT	CHKD	APPD
2	HFL(-)10K/REVA	AX517Q	Ø	ORIGINAL RELEASE	8/3/72		W		

MARK TMC PART NUMBER  
1/8 HIGH GOTHIC WITH LATEST  
REVISION LETTER



MOUNT IN "A" HOLES  
AS SHOWN.

A ~ .191-.194 DIA. 2 REQ'D.

B ~  $\frac{5}{16}$  DIA. 1 REQ'D

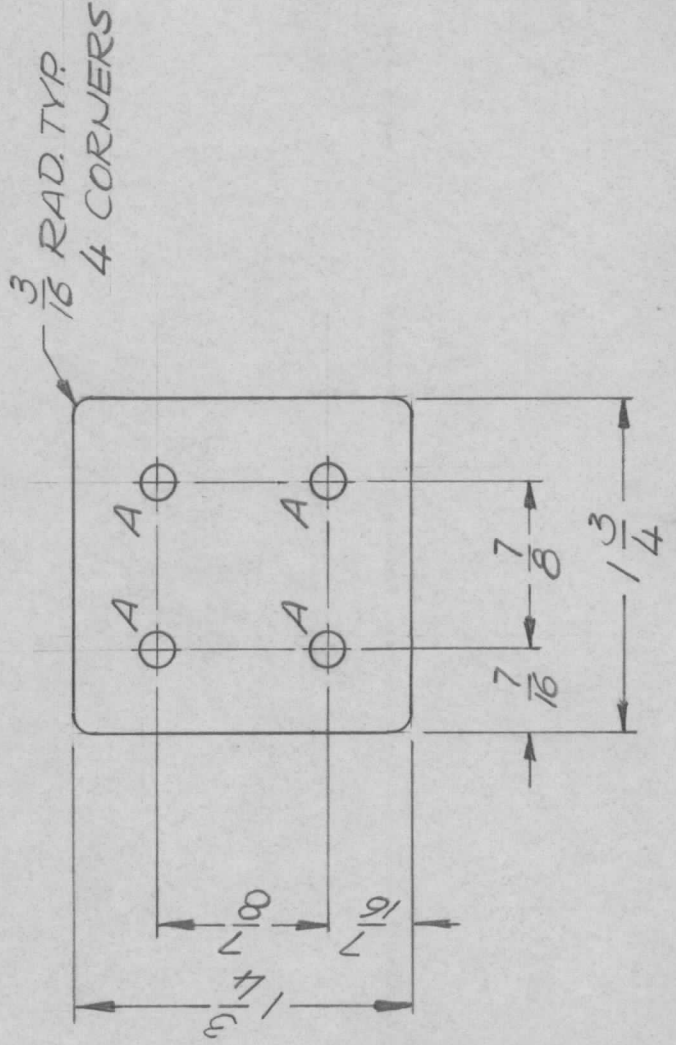
UNLESS OTHERWISE SPECIFIED:

1. USE MATERIAL THICKNESS FOR MAXIMUM RADIUS ON ALL BENDS.
2. ALL ANGULAR BENDS 90 DEGREES.
3. REMOVE ALL BURRS AND SHARP EDGES.
4. MOUNT INSERTS AFTER FINISHING.

UNLESS OTHERWISE SPECIFIED DIMENSIONS ARE IN INCHES AND INCLUDE CHEMICALLY APPLIED OR PLATED FINISHES		2 1 NT129-0632-4 NUT, SWAGE		A	
DECIMALS	FRACTIONS	REQ'D ITEM	PART NUMBER	DESCRIPTION	SYM.
.X ± .05	1/64	LIST OF MATERIAL			
.XX ± .01	TOLS. 1/64				
.XXX ± .005	ANGLES 0°-30°				
MATERIAL ALUMINUM		THE TECHNICAL MATERIEL CORP.			
.064 5052-H32		MAMARONECK, NEW YORK			
FINISH S404 YEL IRID		BRACKET, BEARING			
FINAL APPROVAL <i>SM</i>		DATE 3AUG72	SIZE A		
MECH. DES. <i>SM</i>		DATE 15May72	CODE IDENT. NO. 82679	DWG NO. MS 6364	ISSUE Ø
ELECT. DES.		DATE	SCALE	SHEET	OF
CHECKED		DATE	A		
DRAWN <i>SM</i>		DATE 15May72	A		

NOTICE TO PERSONS RECEIVING THIS DRAWING  
THE TECHNICAL MATERIEL CORPORATION claims proprietary right in the material disclosed herein. This drawing is issued in confidence for engineering information only and may not be reproduced or used to manufacture anything shown hereon without permission from THE TECHNICAL MATERIEL CORPORATION to the user. This drawing is loaned for mutual assistance and is subject to recall at any time.

APPLICATION		REVISIONS							
QTY	MODEL USED ON	ASS'Y NO.	LTR	DESCRIPTION	DATE	E.M.N.NO	DRAFT	CHKD	APPD
1	TLAM-1K	AS147	Ø	ORIGINAL RELEASE FOR PRODUCTION	6-23-72		SP		
1	TLAA-1K	AS160							



A HOLES - 11/64 DIA. - 4 REQ.

NOTE  
REMOVE ALL BURRS AND ROUND ALL EDGES

REQ'D	ITEM	PART NUMBER	DESCRIPTION	SYM.
F. BUDETTI				
LIST OF MATERIAL				
THE TECHNICAL MATERIEL CORP. MAMARONECK, NEW YORK				
PLATE, CONTACT CAPS.				

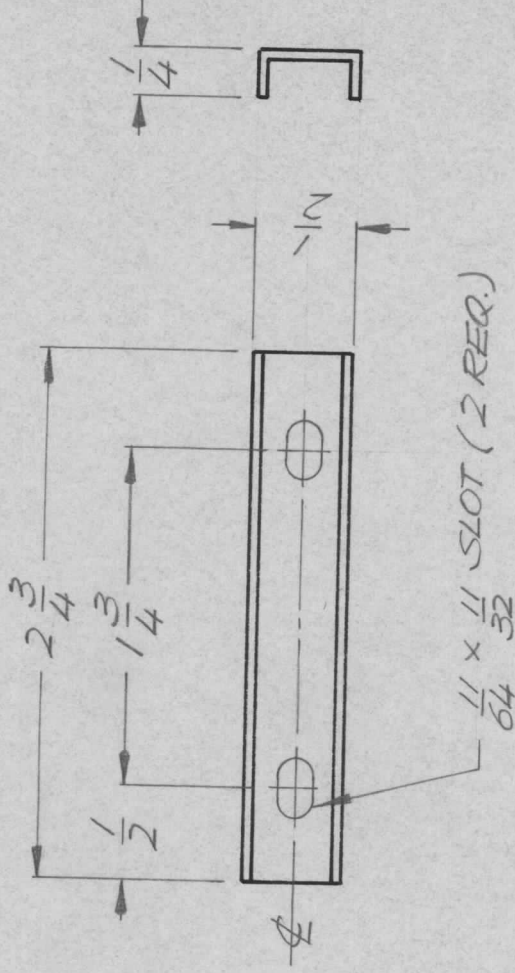
UNLESS OTHERWISE SPECIFIED DIMENSIONS ARE IN INCHES AND INCLUDE CHEMICALLY APPLIED OR PLATED FINISHES	DECIMALS .X ± .05 .XX ± .01 .XXX ± .005	FRACTIONS 1/64 ANGLES 0° - 30°	DATE 6/20/72	DATE 6-20-72	DATE 6/20/72
MATERIAL .051 ALUM 5052 H32	FINISH S404 YEL. IRIDITE				
SIZE A	CODE IDENT. NO. 82679	DWG NO. MS6365	SCALE 1:1	SHEET OF	ISSUE Ø

NOTICE TO PERSONS RECEIVING THIS DRAWING  
THE TECHNICAL MATERIEL CORPORATION claims proprietary right in the material disclosed herein. This drawing is issued in confidence for engineering information only and may not be reproduced or used to manufacture anything shown hereon without permission from THE TECHNICAL MATERIEL CORPORATION to the user. This drawing is loaned for mutual assistance and is subject to recall at any time.

APPLICATION

REVISIONS

QTY	MODEL USED ON	ASS'Y NO.	LTR	DESCRIPTION	DATE	E.M.N.NO	DRAFT	CHKD	APPD
4	HFL( )10K	K17.377	Ø	ORIGINAL RELEASE	8/2/72		CL		
2	HFL( )10K REVA	AP153							

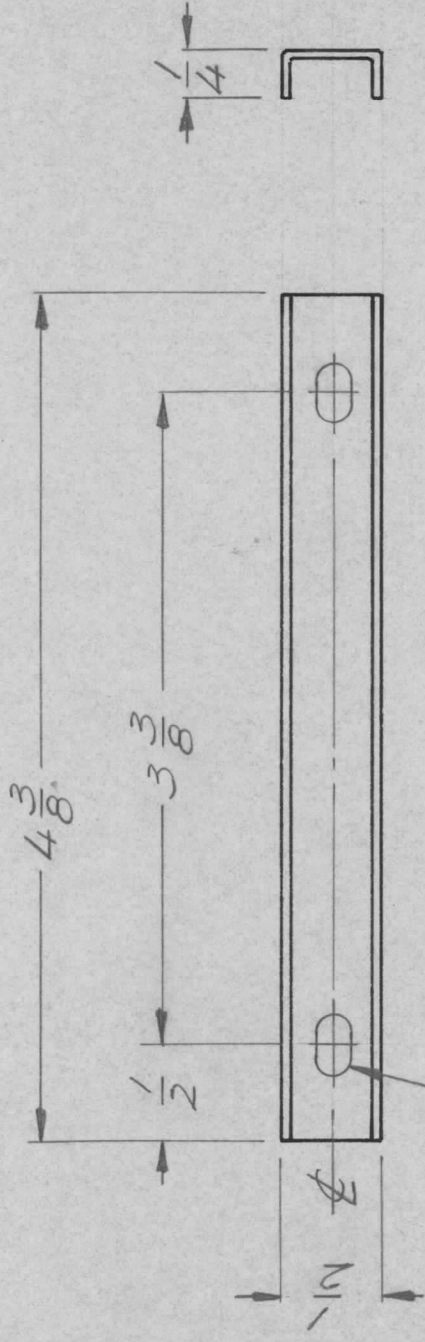


UNLESS OTHERWISE SPECIFIED DIMENSIONS ARE IN INCHES AND INCLUDE CHEMICALLY APPLIED OR PLATED FINISHES	REQ'D	ITEM	PART NUMBER	DESCRIPTION	SYM.
DECIMALS .X ± .05 .XX ± .01 .XXX ± .005	F.B.			LIST OF MATERIAL	
FRACTIONS 1/64	FINAL APPROVAL			THE TECHNICAL MATERIEL CORP. MAMARONECK, NEW YORK	
ANGLES 0° - 30'	DATE	2/26/72			
MATERIAL .064 ALUM	MECH. DES.				
5052 H32	DATE	2/26/72			
FINISH S404	ELECT. DES.				
YEL. IRIDITE	CHECKED				
	DRAWN	GE		BRACKET, DUCT	
	DATE	10/17/71			
NOTICE TO PERSONS RECEIVING THIS DRAWING				SIZE	ISSUE
THE TECHNICAL MATERIEL CORPORATION claims proprietary right in the material disclosed hereon. This drawing is issued in confidence for engineering information only and may not be reproduced or used to manufacture anything shown hereon without permission from THE TECHNICAL MATERIEL CORPORATION to the user. This drawing is loaned for mutual assistance and is subject to recall at any time.				A	Ø
				CODE IDENT. NO.	DWG NO.
				82679	MS6369
SCALE 1:1				SHEET	OF

APPLICATION

REVISIONS

QTY	MODEL USED ON	ASS'Y NO.	LTR	DESCRIPTION	DATE	E.M.N.NO	DRAFT	CHKD	APPD
4	HFL(10K)	K17377	Ø	ORIGINAL RELEASE	8/9/72		CL.		
4	HFL(10K)	AP153							



2 SLOTS REQ.  
11/64" x 11/32"

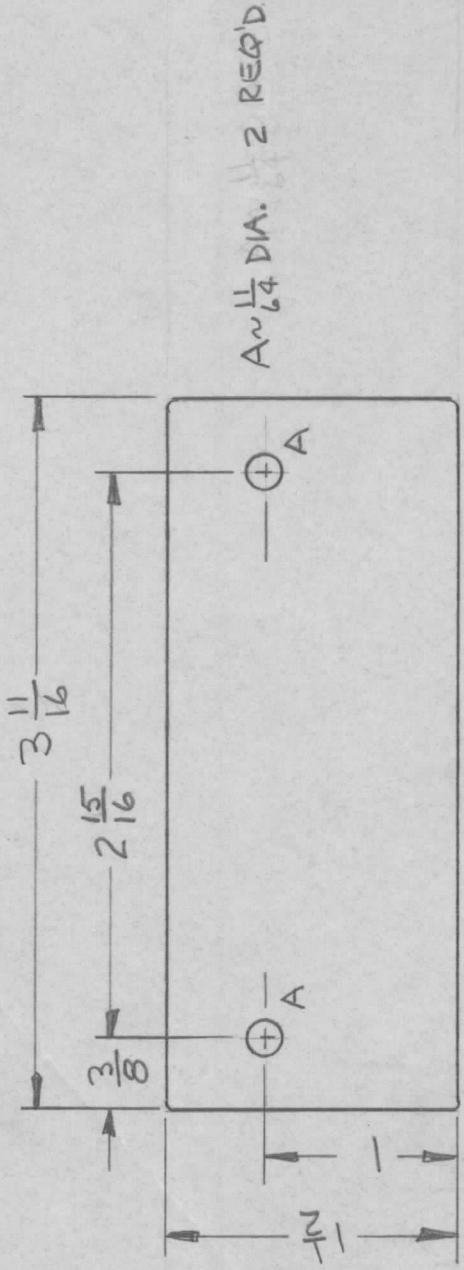
UNLESS OTHERWISE SPECIFIED DIMENSIONS ARE IN INCHES AND INCLUDE CHEMICALLY APPLIED OR PLATED FINISHES	REQ'D	ITEM	PART NUMBER	DESCRIPTION	SYM.
DECIMALS ± .05 TOLS. 1/64 .XX ± .01 ANGLES 0° .30' .XXX ± .005	F.B.			LIST OF MATERIAL	
MATERIAL: 064 ALUM 5052 H32	FINAL APPROVAL	JM		THE TECHNICAL MATERIEL CORP. MAMARONECK, NEW YORK	
FINISH: SL04 YEL IRDITE	MECH. DES.	JM			
	ELECT. DES.				
	CHECKED				
	DRAWN	GE		BRACKET, DUCT	
<p>NOTICE TO PERSONS RECEIVING THIS DRAWING</p> <p>THE TECHNICAL MATERIEL CORPORATION claims proprietary right in the material disclosed herein. This drawing is issued in confidence for engineering information only and may not be reproduced or used to manufacture anything shown hereon without permission from THE TECHNICAL MATERIEL CORPORATION to the user. This drawing is loaned for mutual assistance and is subject to recall at any time.</p>					
SIZE A	CODE IDENT. NO. 82679	DWG NO. MS 6370	ISSUE Ø		
SCALE 1:1			SHEET	OF	



REVISIONS

APPLICATION

QTY	MODEL USED ON	ASS'Y NO.	LTR	DESCRIPTION	DATE	E.M.N.NO	DRAFT	CHKD	APPD
1	HFL()-10K	AX5165	Ø	ORIGINAL RELEASE	8/3/72		<i>d.</i>		



FINISH NOTES:

1. S404 - IRIDITE 14-2 AL-COAT.
2. S114 - ZINC CHROMATE PRIMER
3. S115 - SMOOTH GRAY ENAMEL

OR  
PRIME AND PAINT PER CUSTOMER'S SPECIFICATIONS

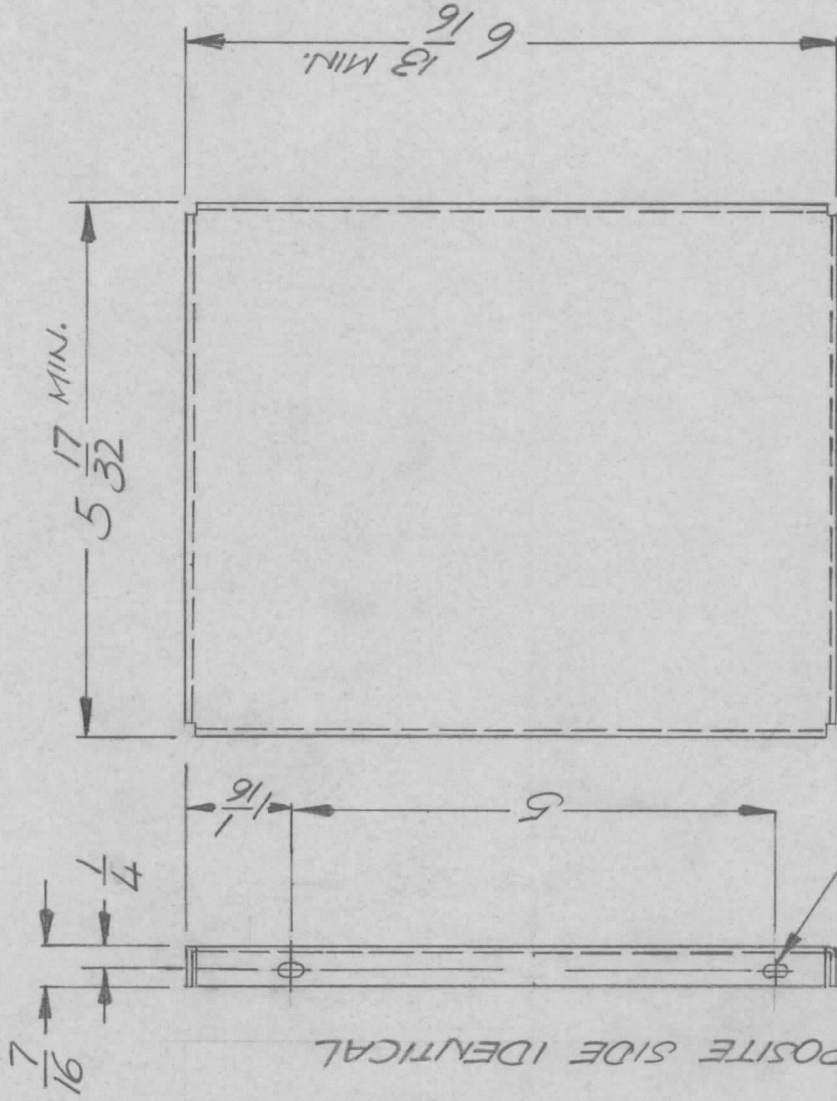
UNLESS OTHERWISE SPECIFIED DIMENSIONS ARE IN INCHES AND INCLUDE CHEMICALLY APPLIED OR PLATED FINISHES	REQ'D	ITEM	PART NUMBER	DESCRIPTION	SYM.
DECIMALS .X ± .05 TOLS. .XX ± .01 ANGLES .XXX ± .005 0° - 30'	FINAL APPROVAL	<i>JM</i>	DATE	LIST OF MATERIAL	
MATERIAL 064 ALUM 5052-H32	MECH. DES.	<i>JM</i>	DATE	THE TECHNICAL MATERIEL CORP. MAMARONECK, NEW YORK	
FINISH SEE NOTES	ELECT. DES.		DATE	PLATE, COVER, MTR	
	CHECKED		DATE	SIZE	CODE IDENT. NO.
	DRAWN	<i>JM</i>	DATE	A	82679
			DATE	SCALE	DWG NO.
			25JUL72		MS6371
					ISSUE
					Ø

NOTICE TO PERSONS RECEIVING THIS DRAWING  
THE TECHNICAL MATERIEL CORPORATION claims proprietary right in the material disclosed hereon. This drawing is issued in confidence for engineering information only and may not be reproduced or used to manufacture anything shown hereon without permission from THE TECHNICAL MATERIEL CORPORATION to the user. This drawing is loaned for mutual assistance and is subject to recall at any time.

REVISIONS

APPLICATION

QTY	MODEL USED ON	ASS'Y NO.	LTR	DESCRIPTION	DATE	E.M.N.NO	DRAFT	CHKD	APPD
1	TM 125		Ø	ORIGINAL RELEASE	10/24/73		DV		



9/64 x 9/32 SLT (4 REQ)

OPPOSITE SIDE IDENTICAL

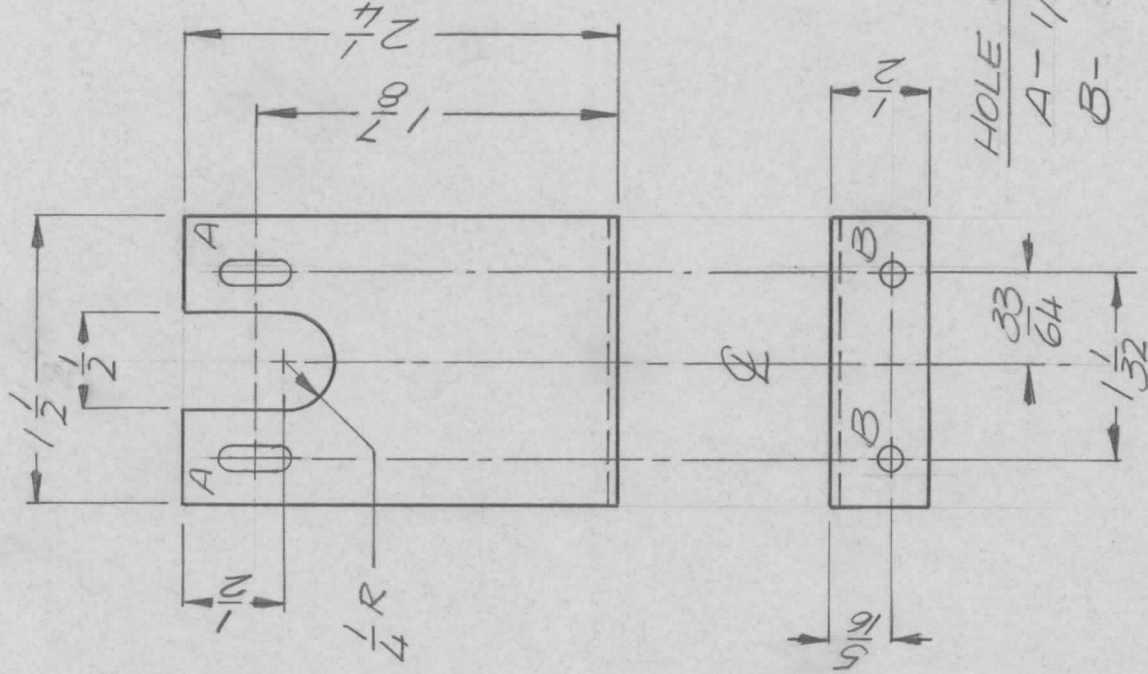
UNLESS OTHERWISE SPECIFIED DIMENSIONS ARE IN INCHES AND INCLUDE CHEMICALLY APPLIED OR PLATED FINISHES	REQ'D	ITEM	PART NUMBER	DESCRIPTION	SYM.
	LIST OF MATERIAL				
DECIMALS	THE TECHNICAL MATERIEL CORP.				
.X ± .05	MAMARONECK, NEW YORK				
.XX ± .01	COVER CRYSTALS OVEN				
.XXX ± .005	SCALE 1/2				
TOLS. 1/64	SIZE A				
ANGLES 0°-30°	CODE IDENT. NO. 82679				
	DWG NO. MS6377				
	ISSUE <input checked="" type="checkbox"/>				
MATERIAL .051 ALUM 5052 H32	DATE 5-7-72				
FINISH 5404 YEL IRIDITE	DATE 5-7-72				
	DATE 5-7-72				

NOTICE TO PERSONS RECEIVING THIS DRAWING  
 THE TECHNICAL MATERIEL CORPORATION claims proprietary right in the material disclosed hereon. This drawing is issued in confidence for engineering information only and may not be reproduced or used to manufacture anything shown hereon without permission from THE TECHNICAL MATERIEL CORPORATION to the user. This drawing is loaned for mutual assistance and is subject to recall at any time.

APPLICATION

REVISIONS

QTY	MODEL USED ON	ASS'Y NO.	LTR	DESCRIPTION	DATE	E.M.N.NO	DRAFT	CHKD	APPD
1	TM125		Ø	ORIG RELEASE FOR PROD	3/25/73		CA.		



HOLE DESCRIPTION QTY.  
 A - 1/8 X 5/16 SLIT. - 2  
 B - 1/16 DIA. - 2

UNLESS OTHERWISE SPECIFIED DIMENSIONS ARE IN INCHES AND INCLUDE CHEMICALLY APPLIED OR PLATED FINISHES		REQ'D ITEM	PART NUMBER	DESCRIPTION	SYM.
DECIMALS		O.P.		LIST OF MATERIAL	
.X ± .05	FRACTIONS	FINAL APPROVAL		THE TECHNICAL MATERIEL CORP.	
.XX ± .01	TOLS.	DATE		MAMARONECK, NEW YORK	
.XXX ± .005	ANGLES	DATE			
	0° - 30'	MECH. DES.			
MATERIAL 5052 H32		ELECT. DES.			
.064 ALUM		CHECKED			
FINISH S404		DRAWN			
YEL IRIDITE					

NOTICE TO PERSONS RECEIVING THIS DRAWING		SCALE	SHEET	OF
THE TECHNICAL MATERIEL CORPORATION claims proprietary right in the material disclosed hereon. This drawing is issued in confidence for engineering information only and may not be reproduced or used to manufacture anything shown hereon without permission from THE TECHNICAL MATERIEL CORPORATION to the user. This drawing is loaned for mutual assistance and is subject to recall at any time.		1:1		
SIZE	CODE IDENT. NO.	DWG NO.	ISSUE	
A	82679	MS 6379	Ø	

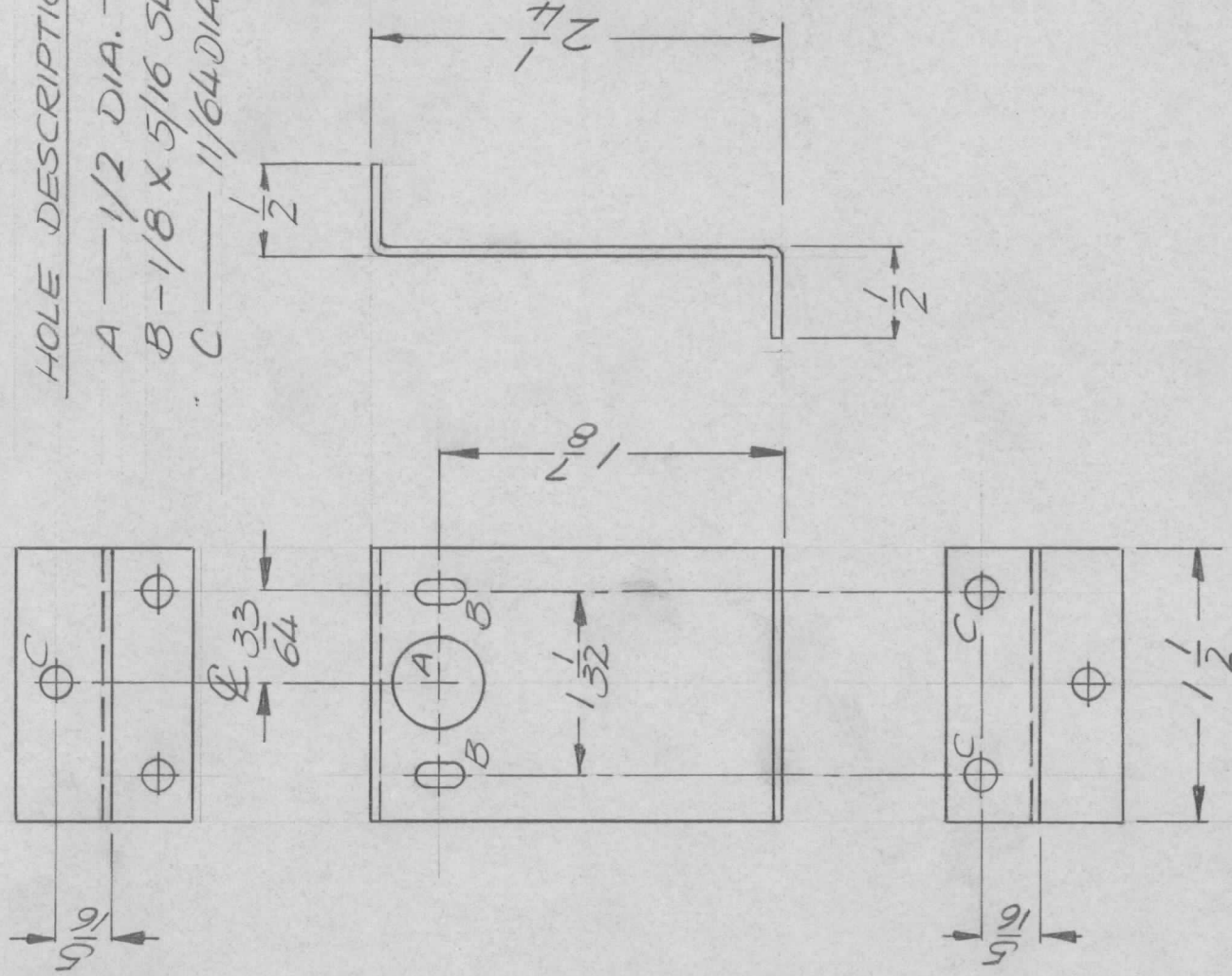
BRACKET SW. MTG. FRONT

APPLICATION

QTY 1  
MODEL USED ON TM-125  
ASSY NO. Ø  
LTR Ø

REVISIONS

DESCRIPTION ORIG RELEASE FOR PROD 3/23/78  
DATE 3/23/78  
E.M.N.NO  
DRAFT C.  
CHKD  
APPD



UNLESS OTHERWISE SPECIFIED DIMENSIONS ARE IN INCHES AND INCLUDE CHEMICALLY APPLIED OR PLATED FINISHES

DECIMALS .X ± .05  
.XX ± .01  
.XXX ± .005

FRACTIONS 1/64

TOLS. ANGLES 0° - 30°

MATERIAL 5052 H32  
.064 ALLUM

FINISH 5L04 YEL. IRIDITE

REQ'D ITEM	PART NUMBER	DESCRIPTION	SYM.
O.P.		LIST OF MATERIAL	
FINAL APPROVAL		THE TECHNICAL MATERIEL CORP. MAMARONECK, NEW YORK	
MECH. DES.		BRACKET SW. MTG. (REAR)	
ELECT. DES.			
CHECKED			
DRAWN			

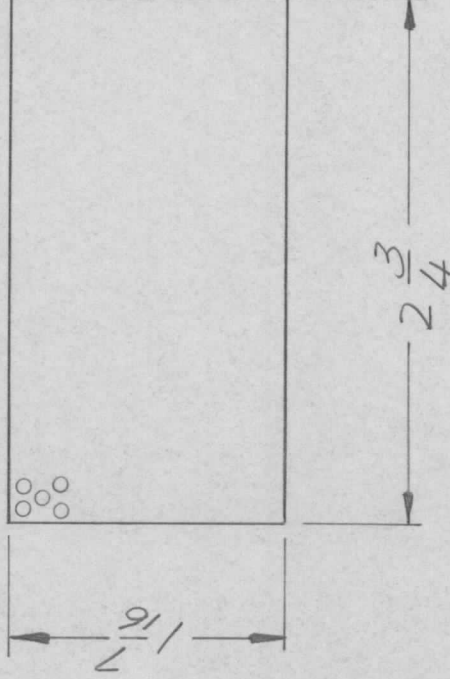
NOTICE TO PERSONS RECEIVING THIS DRAWING  
THE TECHNICAL MATERIEL CORPORATION claims proprietary right in the material disclosed hereon. This drawing is issued in confidence for engineering information only and may not be reproduced or used to manufacture anything shown hereon without permission from THE TECHNICAL MATERIEL CORPORATION to the user. This drawing is loaned for mutual assistance and is subject to recall at any time.

SIZE A  
CODE IDENT. NO. 82679  
DWG NO. MS 6380  
SCALE 1:1  
SHEET OF

REVISIONS

APPLICATION

QTY	MODEL USED ON	ASSY NO.	LTR	DESCRIPTION	DATE	E.M.N.NO	DRAFT	CHKD	APPD
1	GPR110		Ø	ORIG RELEASE FOR PROD	3/29/73		a		
1	TM125								



MATERIAL

NOTE #1  
 .064 THK ALUM.  
 PERFORATED - .072 DIA.  
 HOLES ON 3/32 CENTERS  
 STAGGERED

FINISH

NOTE #2  
 1. S404 YELLOW IRIDITE  
 2. PRIME & PAINT ONE  
 SIDE FLAT BLACK  
 MATTE

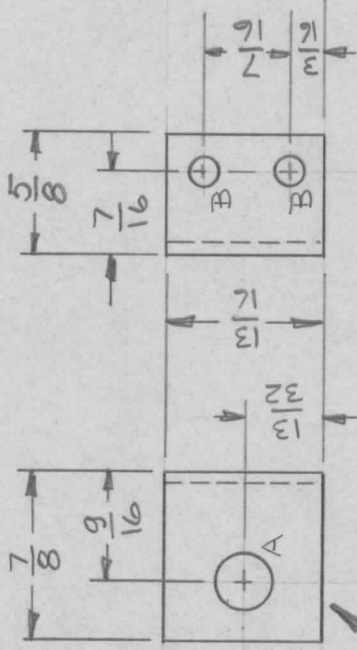
UNLESS OTHERWISE SPECIFIED DIMENSIONS ARE IN INCHES AND INCLUDE CHEMICALLY APPLIED OR PLATED FINISHES	REQ'D	ITEM	PART NUMBER	DESCRIPTION	SYM.	
DECIMALS .X ± .05 .XX ± .01 .XXX ± .005						
FRACTIONS 1/64						
TOLS. ANGLES 0° - 30'						
MATERIAL SEE NOTE 1				LIST OF MATERIAL		
FINISH SEE NOTE 2				THE TECHNICAL MATERIEL CORP. MAMARONECK, NEW YORK		
NOTICE TO PERSONS RECEIVING THIS DRAWING THE TECHNICAL MATERIEL CORPORATION claims proprietary right in the material disclosed hereon. This drawing is issued in confidence for engineering information only and may not be reproduced or used to manufacture anything shown hereon without permission from THE TECHNICAL MATERIEL CORPORATION to the user. This drawing is loaned for mutual assistance and is subject to recall at any time.		FINAL APPROVAL O.POSE	DATE 3/19/73			
	MECH. DES.		DATE 3/19/73			
	ELECT. DES.		DATE 3/19/73			
	CHECKED		DATE			
	DRAWN	GE	DATE			
SIZE A	CODE IDENT. NO. 82679	DWG NO. MS6382	ISSUE Ø			
SCALE 1:1	SHEET 1:1		OF			

GRILL, SPEAKER

## APPLICATION

## REVISIONS

QTY	MODEL USED ON	ASS'Y NO.	LTR	DESCRIPTION	DATE	E.M.N.NO	DRAFT	CHKD	APPD
1	HFL(-)-10K/REV A	AX5167	Ø	ORIGINAL RELEASE FOR PRODUCTION	9/27/72		EP		
			A	DIMENSIONED HOLES	10-27-77	21584	PH	K.P. N.B.	



MARK TMC PART NUMBER  
1/8 HIGH GOTHIC WITH LATEST  
REVISION LETTER

HOLE	QTY	DESCRIPTION
A	1	5/16 DIA.
B	2	1/64 DIA.

## UNLESS OTHERWISE SPECIFIED:

1. USE MATERIAL THICKNESS FOR MAXIMUM RADIUS ON ALL BENDS.
2. ALL ANGULAR BENDS 90 DEGREES.
3. REMOVE ALL BURRS AND SHARP EDGES.
4. MOUNT INSERTS AFTER FINISHING.

UNLESS OTHERWISE SPECIFIED  
DIMENSIONS ARE IN INCHES  
AND INCLUDE CHEMICALLY APPLIED  
OR PLATED FINISHES

DECIMALS FRACTIONS  
.X ± .05 1/64  
.XX ± .01  
.XXX ± .005 0° .30'

MATERIAL .064

ALUM 5052-H32

FINISH

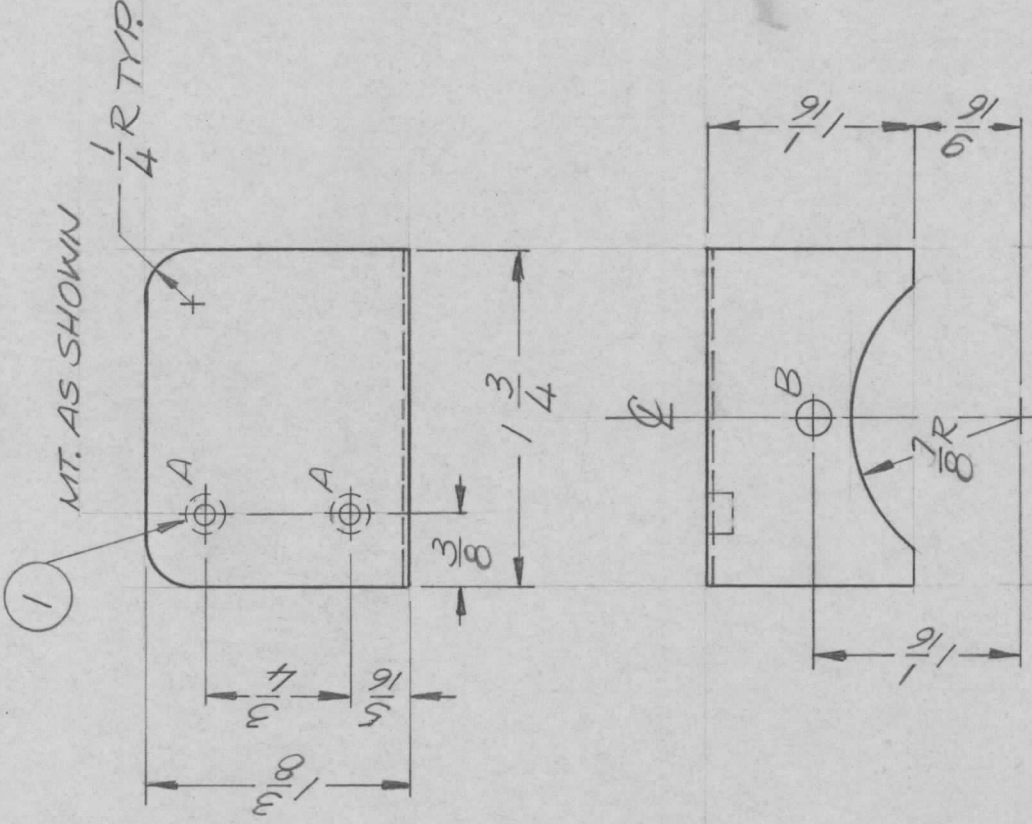
S404 YEL IRID

REQ'D	ITEM	PART NUMBER	DESCRIPTION	SYM.
LIST OF MATERIAL				
FINAL APPROVAL	<i>JM</i>	DATE	THE TECHNICAL MATERIEL CORP.	
MECH. DES.	<i>JM</i>	22 SEP 72	MAMARONECK, NEW YORK	
ELECT. DES.		DATE	BRKLT, RES MTG	
CHECKED		DATE		
DRAWN	<i>JM</i>	22 SEP 72		
		DATE		
NOTICE TO PERSONS RECEIVING THIS DRAWING			SIZE	ISSUE
THE TECHNICAL MATERIEL CORPORATION claims proprietary right in the material disclosed hereon. This drawing is issued in confidence for engineering information only and may not be reproduced or used to manufacture anything shown hereon without permission from THE TECHNICAL MATERIEL CORPORATION to the user. This drawing is loaned for mutual assistance and is subject to recall at any time.			A	A
			CODE IDENT. NO.	DWG NO.
			82679	MSG383
			SCALE	SHEET / OF
				1 / 1

REVISIONS

APPLICATION

QTY	MODEL USED ON	ASSY NO.	LTR	DESCRIPTION	DATE	E.M.N.NO	DRAFT	CHKD	APPD
1	TLAAIK	AX5132	Ø	ORIGINAL RELEASE	4/4/73		g		



HOLE DESCRIPTION REQ.  
 A - .191 - .194 DIA. - 2  
 B - 11/64 DIA. - 1

2	1	NT129-0632-4	NUT, ROUND	A
REQ'D ITEM	PART NUMBER	DESCRIPTION	SYM.	

LIST OF MATERIAL

F.B.		THE TECHNICAL MATERIEL CORP. MAMARONECK, NEW YORK	
FINAL APPROVAL	DATE	STRAP, CONTACT, CAP.	
MECH. DES.	DATE	SIZE	CODE IDENT. NO.
ELECT. DES.	DATE	A	82679
CHECKED	DATE	SCALE	1:1
DRAWN	DATE	DWG NO.	MS 6384
CE	8/30/72	ISSUE	Ø

UNLESS OTHERWISE SPECIFIED DIMENSIONS ARE IN INCHES AND INCLUDE CHEMICALLY APPLIED OR PLATED FINISHES

DECIMALS .X ± .05  
 .XX ± .01  
 .XXX ± .005

FRACTIONS 1/64  
 TOLS. 1/64  
 ANGLES 0° - 30'

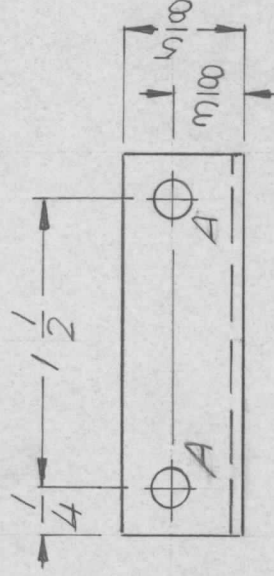
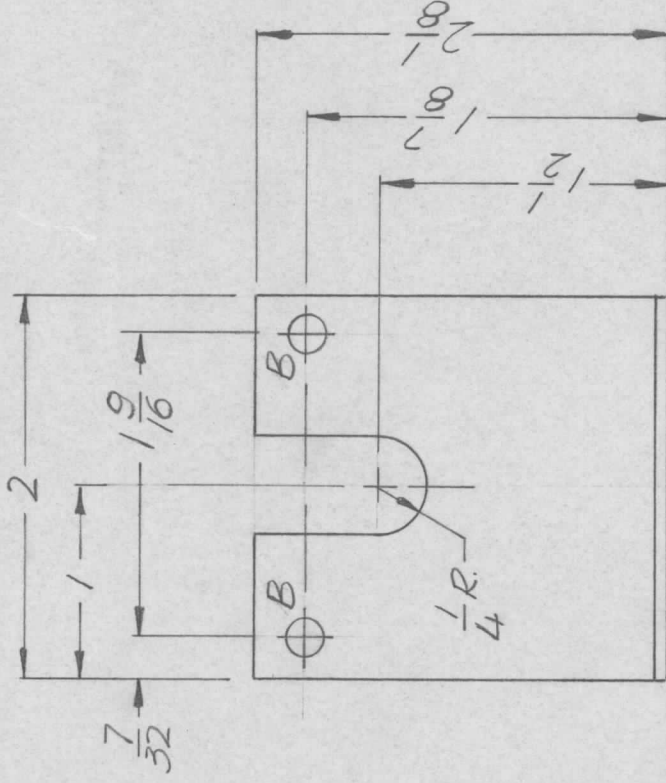
MATERIAL 030  
 HOT ROLLED COPR  
 FINISH S245  
 SILVER PLATE

NOTICE TO PERSONS RECEIVING THIS DRAWING  
 THE TECHNICAL MATERIEL CORPORATION claims proprietary right in the material disclosed hereon. This drawing is issued in confidence for engineering information only and may not be reproduced or used to manufacture anything shown hereon without permission from THE TECHNICAL MATERIEL CORPORATION to the user. This drawing is loaned for mutual assistance and is subject to recall at any time.

## APPLICATION

## REVISIONS

QTY	MODEL USED ON	ASS'Y NO.	LTR	DESCRIPTION	DATE	E.M.N.NO	DRAFT	CHKD	APPD
	ATV 350		Ø	ORIGINAL RELEASE	10-20-72		EJ		



HOLE DESCRIPTION QTY.

UNLESS OTHERWISE SPECIFIED:

1. USE MATERIAL THICKNESS FOR MAXIMUM RADIUS ON ALL BENDS.
2. ALL ANGULAR BENDS 90 DEGREES.
3. REMOVE ALL BURRS AND SHARP EDGES.
4. MOUNT INSERTS AFTER FINISHING.

A — 11/64 DIA — 2

B — 9/64 DIA. — 2

UNLESS OTHERWISE SPECIFIED  
DIMENSIONS ARE IN INCHES  
AND INCLUDE CHEMICALLY APPLIED  
OR PLATED FINISHES

DECIMALS  
.X ± .05  
.XX ± .01  
.XXX ± .005

FRACTIONS  
1/64  
ANGLES  
0°-30'

MATERIAL .063  
5052 H32 ALUM.

FINISH S404  
YEL. IRIDITE

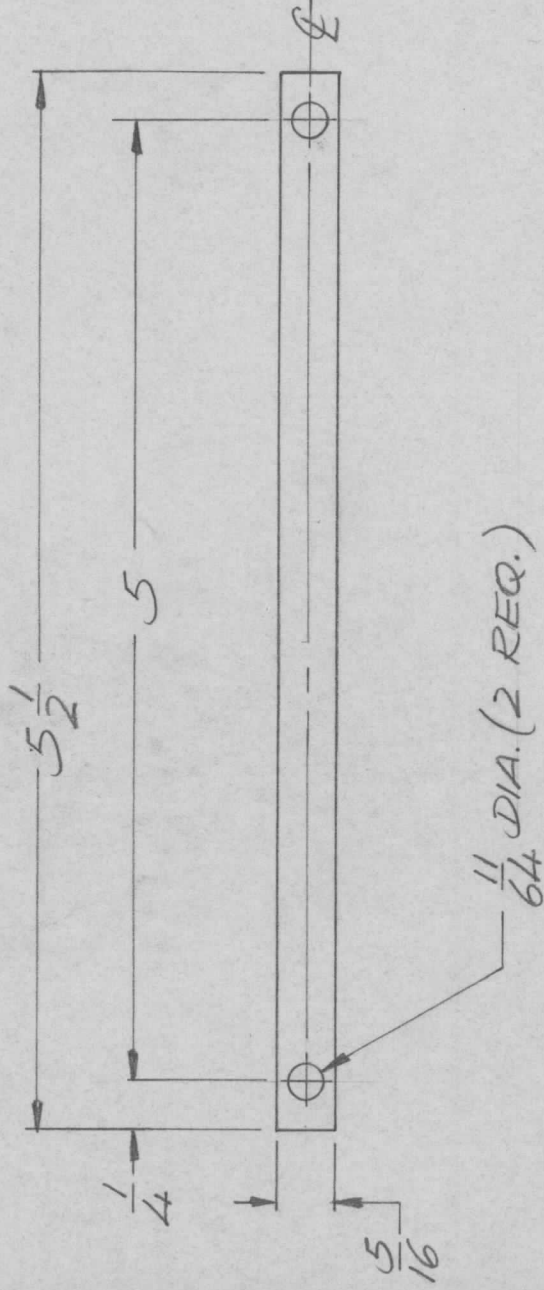
REQ'D ITEM	PART NUMBER	DESCRIPTION	SYM.
F. BUDETTI LIST OF MATERIAL			
FINAL APPROVAL	DATE	THE TECHNICAL MATERIEL CORP.	
MECH. DES.	DATE	MAMARONECK, NEW YORK	
ELECT. DES.	DATE	BRKT. SWITCH MTG.	
CHECKED	DATE	SIZE	CODE IDENT. NO.
DRAWN	DATE	A	82679
		SCALE	DWG NO.
		1/8"	MS 6387
			ISSUE
			Ø
		SHEET	OF
		1	1

NOTICE TO PERSONS RECEIVING THIS DRAWING  
THE TECHNICAL MATERIEL CORPORATION claims proprietary right in the material disclosed hereon. This drawing is issued in confidence for engineering information only and may not be reproduced or used to manufacture anything shown hereon without permission from THE TECHNICAL MATERIEL CORPORATION to the user. This drawing is loaned for mutual assistance and is subject to recall at any time.



APPLICATION REVISIONS

QTY	MODEL USED ON	ASS'Y NO.	LTR	DESCRIPTION	DATE	E.M.N.NO	DRAFT	CHKD	APPD
2	ATU350		Ø	ORIGINAL RELEASE	10/26/72		ES		



UNLESS OTHERWISE SPECIFIED DIMENSIONS ARE IN INCHES AND INCLUDE CHEMICALLY APPLIED OR PLATED FINISHES	REQ'D ITEM	PART NUMBER	DESCRIPTION	SYM.
DECIMALS .X ± .05 .XX ± .01 .XXX ± .005	F.B.		LIST OF MATERIAL	
FRACTIONS 1/64	FINAL APPROVAL		THE TECHNICAL MATERIEL CORP. MAMARONECK, NEW YORK	
TOLS. ANGLES 0° - 30'	DATE			
MATERIAL. 0644	MECH. DES.			
ALUM 5052H32	ELECT. DES.			
FINISH S404	CHECKED			
YEL. IRIDITE	DRAWN		STRAP	
NOTICE TO PERSONS RECEIVING THIS DRAWING THE TECHNICAL MATERIEL CORPORATION claims proprietary right in the material disclosed hereon. This drawing is issued in confidence for engineering information only and may not be reproduced or used to manufacture anything shown hereon without permission from THE TECHNICAL MATERIEL CORPORATION to the user. This drawing is loaned for mutual assistance and is subject to recall at any time.	DATE			
	DATE			
	DATE			
	DATE			
	DATE			
SIZE	CODE IDENT. NO.	DWG NO.	ISSUE	
A	82679	MS6389	Ø	
SCALE 1:1		SHEET	OF	

APPLICATION

QTY 1

MODEL USED ON KIT 375

LTR

ASSY NO.

DESCRIPTION

ORIG RELEASE FOR PROD  
A ADD OBSOLETE NOTE

DATE

1/29/73

E.M.N.NO

DRAFT

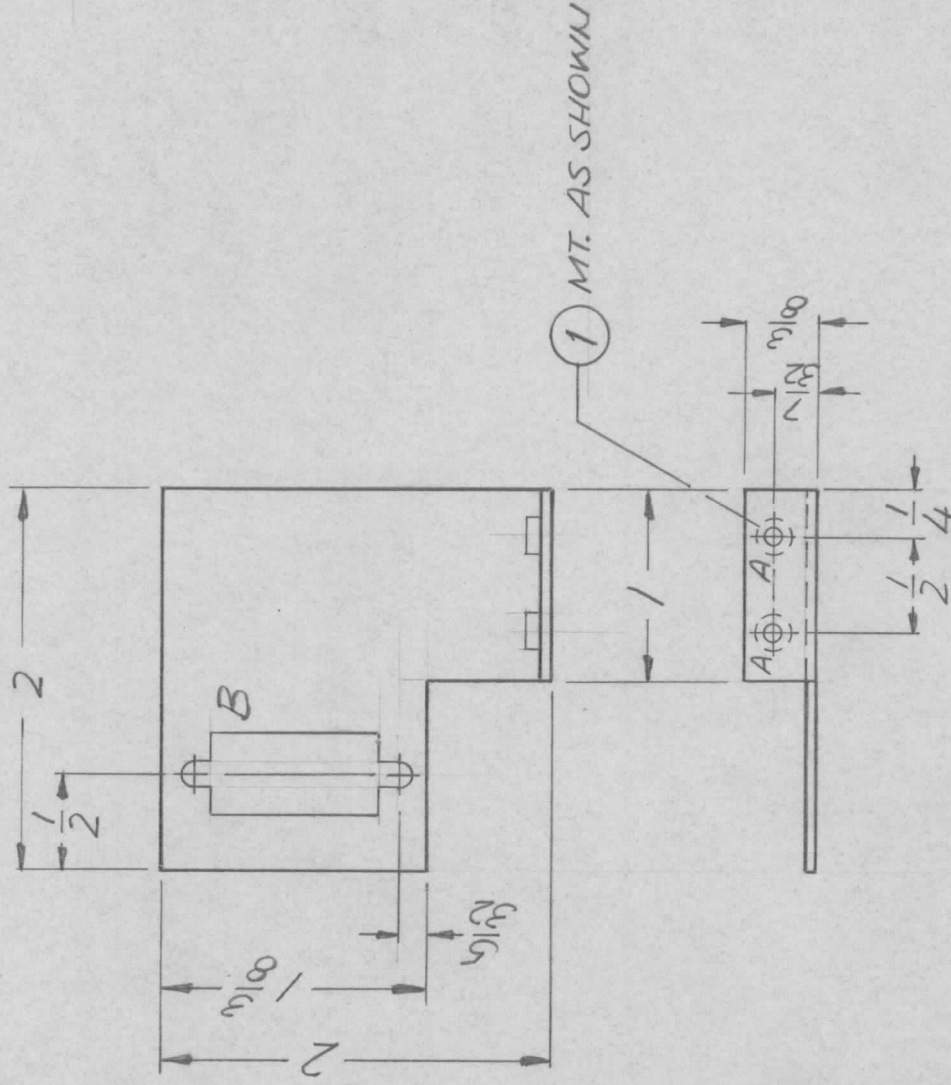
Q.

CHKD

EJ

APPD

EJ



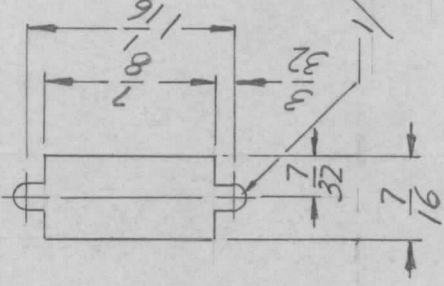
1 MT. AS SHOWN

A HOLE - .161 - .164 DIA. - 2 REQ.  
B - SEE DETAIL - 1 REQ.

**OBSOLETE**

1/8 DIA. (2 PLACES)  
REF. LD 2526

B DETAIL



REQ'D	ITEM	PART NUMBER	DESCRIPTION	SYM.
2	1	NT129-0440-3	NUT ROUND, SWAGE TYPE	A

LIST OF MATERIAL

FINAL APPROVAL	DATE	MECH. DES.	DATE	ELECT. DES.	DATE	CHECKED	DATE	DRAWN	DATE
<i>[Signature]</i>	11/1/72	<i>[Signature]</i>		<i>[Signature]</i>				GE	10/4/72

THE TECHNICAL MATERIEL CORP.  
MAMARONECK, NEW YORK

BRKT. RELAY MTG.

UNLESS OTHERWISE SPECIFIED DIMENSIONS ARE IN INCHES AND INCLUDE CHEMICALLY APPLIED OR PLATED FINISHES

DECIMALS FRACTIONS  
X ± .05 TOLS. 1/64  
.XX ± .01 ANGLES 0° - 30'  
.XXX ± .005

MATERIAL: 051 ALUM 5052 H32

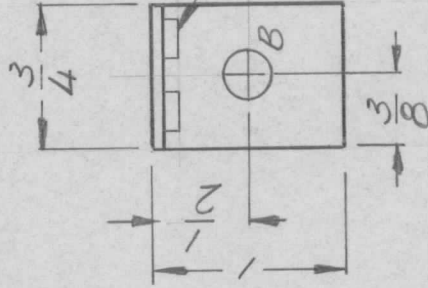
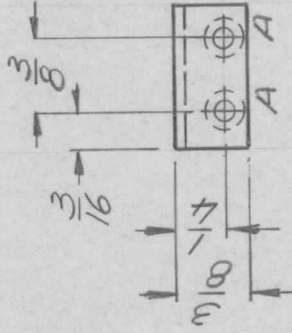
FINISH S40H YELLOW IRIDITE

NOTICE TO PERSONS RECEIVING THIS DRAWING  
THE TECHNICAL MATERIEL CORPORATION claims proprietary right in the material disclosed hereon. This drawing is issued in confidence for engineering information only and may not be reproduced or used to manufacture anything shown hereon without permission from THE TECHNICAL MATERIEL CORPORATION to the user. This drawing is loaned for mutual assistance and is subject to recall at any time.

SIZE A	CODE IDENT. NO. 82679	DWG NO. MS6390	ISSUE A
SCALE 1:1		SHEET	OF

REVISIONS

QTY	MODEL USED ON	ASS'Y NO.	LTR	DESCRIPTION	DATE	E.M.N.NO	DRAFT	CHKD	APPD
1	KIT 375		Ø	ORIGINAL RELEASE	12-18-72		EJ		
			A	ADD OBSOLETE NOTE	4/17/73	21056	CE	EJ	EJ



MOUNT AS SHOWN

A HOLE - .161 .164 DIA. - 2 REQ.

B HOLE - 1/4 DIA. - 1 REQ.

**OBSOLETE**

REF LD 2527

REQ'D ITEM	PART NUMBER	DESCRIPTION	SYM.
2	1	NT129-04404 NUT, SWAGE	A
O. POSE			
LIST OF MATERIAL			
FINAL APPROVAL	DATE	THE TECHNICAL MATERIEL CORP.	
<i>[Signature]</i>	4/18/72	MAMARONECK, NEW YORK	
MECH. DES.	DATE	BRACKET BNC	
ELECT. DES.	DATE		
CHECKED	DATE		
DRAWN	DATE		
GE	9-10-72		
UNLESS OTHERWISE SPECIFIED DIMENSIONS ARE IN INCHES AND INCLUDE CHEMICALLY APPLIED OR PLATED FINISHES		SIZE	ISSUE
DECIMALS	FRACTIONS	A	82679
.X ± .05	1/64	SCALE	DWG NO.
.XX ± .01	ANGLES	1:1	MS6391
.XXX ± .005	0° - 30'		
MATERIAL .064-ALUM 5052 H32			
FINISH S404 YEL. IRIDITE			
<p>NOTICE TO PERSONS RECEIVING THIS DRAWING</p> <p>THE TECHNICAL MATERIEL CORPORATION claims proprietary right in the material disclosed hereon. This drawing is issued in confidence for engineering information only and may not be reproduced or used to manufacture anything shown hereon without permission from THE TECHNICAL MATERIEL CORPORATION to the user. This drawing is loaned for mutual assistance and is subject to recall at any time.</p>			

## APPLICATION

QTY 1

MODEL USED ON K17375

ASS'Y NO.

LTR Ø

DESCRIPTION ORIGINAL RELEASE

DATE 12/18/72

E.M.N.NO. 141713 21056

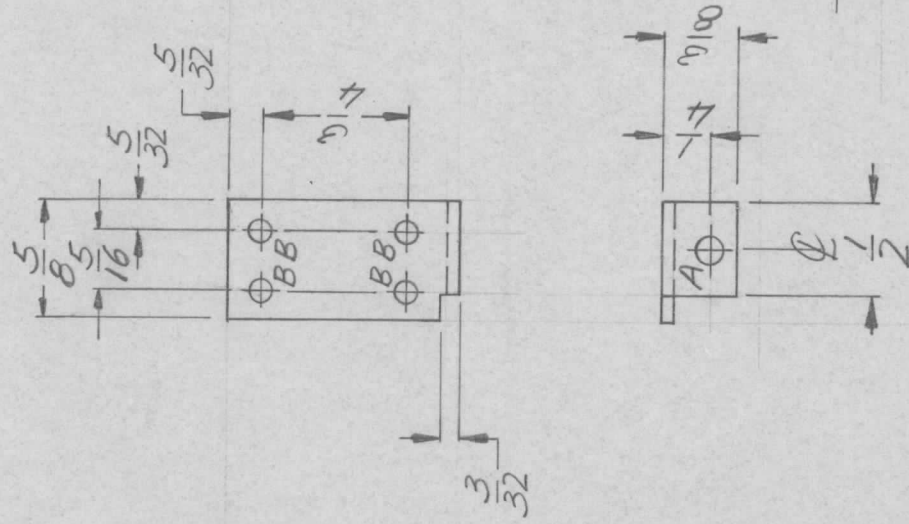
DRAFT EJ

CHKD EJ

APPD EJ

## REVISIONS

A ADD OBSOLETE NOTE

**OBSOLETE**

UNLESS OTHERWISE SPECIFIED DIMENSIONS ARE IN INCHES AND INCLUDE CHEMICALLY APPLIED OR PLATED FINISHES

DECIMALS FRACTIONS  
X ± .05 TOLS. 1/64  
.XX ± .01 ANGLES  
.XXX ± .005 0° .30'MATERIAL: 064 ALLUM  
5052 H32FINISH 5404  
YEL. IRIDITE

REQ'D

ITEM

PART NUMBER

DESCRIPTION

SYM.

O. POSE

LIST OF MATERIAL

FINAL APPROVAL

DATE 12/18/72

MECH. DES.

DATE

ELECT. DES.

DATE

CHECKED

DATE

DRAWN

GE

DATE 10/3/72

NOTICE TO PERSONS RECEIVING THIS DRAWING

THE TECHNICAL MATERIEL CORPORATION claims proprietary right in the material disclosed hereon. This drawing is issued in confidence for engineering information only and may not be reproduced or used to manufacture anything shown hereon without permission from THE TECHNICAL MATERIEL CORPORATION to the user. This drawing is loaned for mutual assistance and is subject to recall at any time.

SIZE

A

CODE IDENT. NO.

82679

DWG NO.

MS6392

ISSUE

A

SCALE 1:1

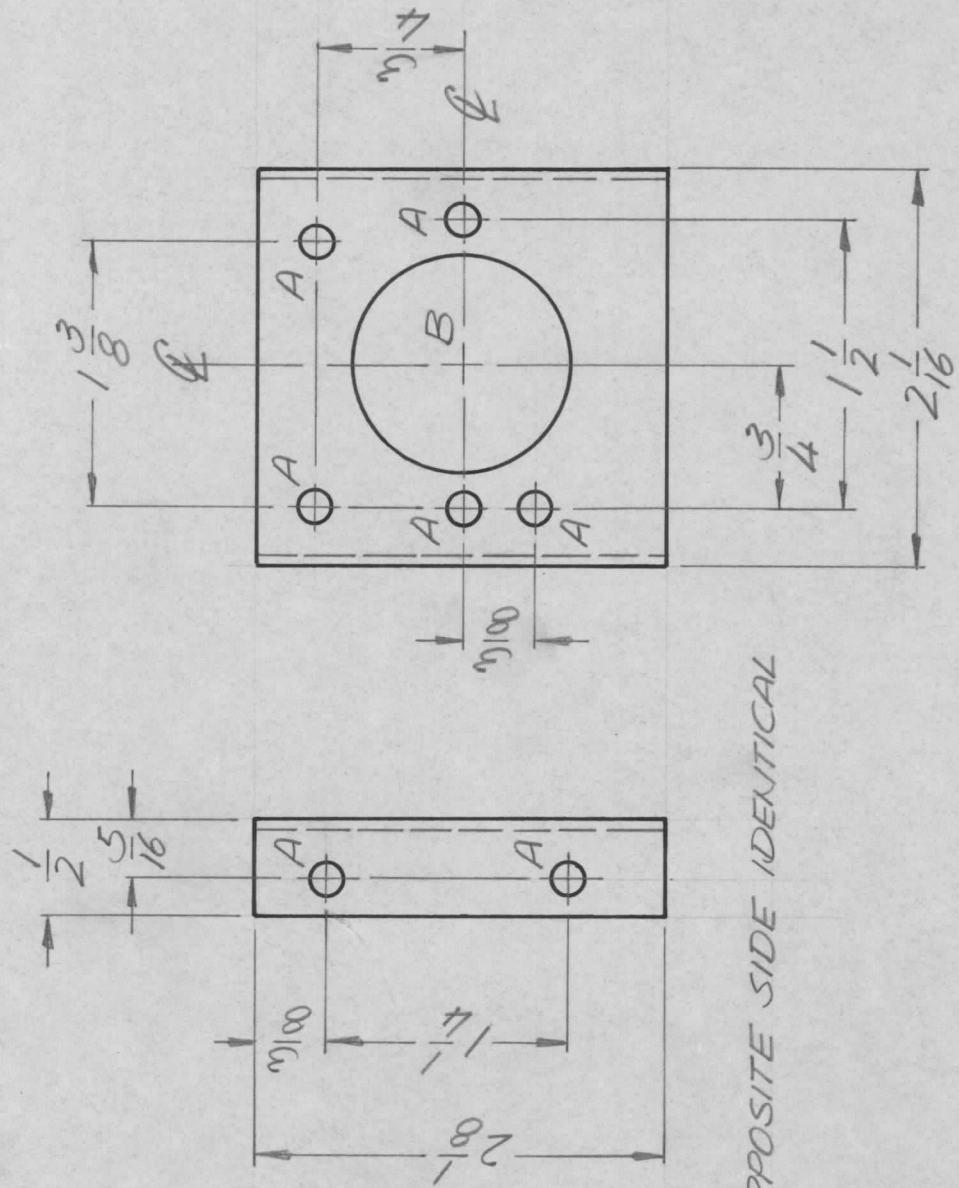
SHEET

OF

REVISIONS

APPLICATION

QTY	MODEL USED ON	ASS'Y NO.	LTR	DESCRIPTION	DATE	E.M.N.NO	DRAFT	CHKD	APPD
1	RSU-1		Ø	ORIGINAL RELEASE	11-21-72	EJ			



OPPOSITE SIDE IDENTICAL

HOLE DESCRIPTION REQ.

- A — 11/64 DIA. — 9
- B — 1 1/8 DIA — 1

REF. LD 2524

UNLESS OTHERWISE SPECIFIED DIMENSIONS ARE IN INCHES AND INCLUDE CHEMICALLY APPLIED OR PLATED FINISHES		REQ'D ITEM	PART NUMBER	DESCRIPTION	SYM.
DECIMALS .X ± .05 .XX ± .01 .XXX ± .005		O. POSE			
FRACTIONS 1/64		LIST OF MATERIAL			
TOLS. ANGLES ° .30'		FINAL APPROVAL	DATE	THE TECHNICAL MATERIEL CORP. MAMARONECK, NEW YORK	
MATERIAL 5052 H32 .064 ALUM.		MECH. DES. ALP.	DATE	BRKT. SOCKET MTG STANDARD	
FINISH S404 YELLOW IRIDITE		ELECT. DES.	DATE		
		CHECKED	DATE		
		DRAWN GE	DATE 9/27/72		
SIZE A	CODE IDENT. NO. 82679	DWG NO. MS6394		ISSUE	Ø
SCALE 1:1		SHEET		OF	

NOTICE TO PERSONS RECEIVING THIS DRAWING  
THE TECHNICAL MATERIEL CORPORATION claims proprietary right in the material disclosed hereon. This drawing is issued in confidence for engineering information only and may not be reproduced or used to manufacture anything shown hereon without permission from THE TECHNICAL MATERIEL CORPORATION to the user. This drawing is loaned for mutual assistance and is subject to recall at any time.