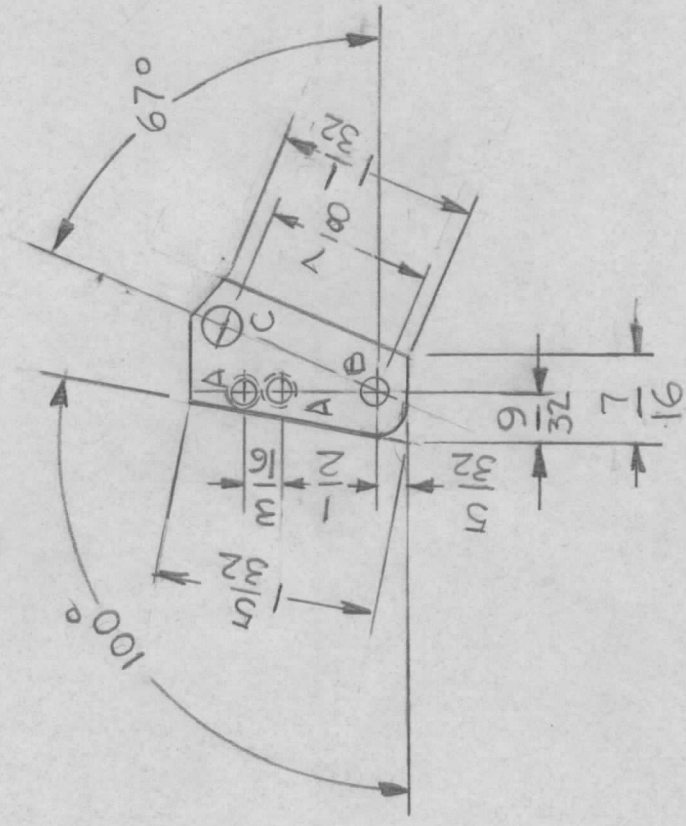


REVISIONS

APPLICATION

QTY	MODEL USED ON	ASSY NO.	LTR	DESCRIPTION	DATE	E.M.N.NO	DRAFT	CHKD	APPD
1	GPT-1K (E4)		Ø	ORIGINAL RELEASE	1-10-77				*

MOUNT IN "A" HOLES



HOLES

- A - .136-139 DIA. 2REQ.
- B - 9/64 DIA. 1REQ.
- C - 13/64 DIA. 1REQ.

OBSOLETE

2	1	NT129-256-4	NUT, ROUND	A
REQ'D ITEM	PART NUMBER	DESCRIPTION	SYM.	

LIST OF MATERIAL

FINAL APPROVAL	DATE	THE TECHNICAL MATERIEL CORP.	
MECH. DES.	DATE	MAMARONECK, NEW YORK	
ELECT. DES.	DATE	PLATE MTG MICROSWITCH	
CHECKED	DATE		
DRAWN	DATE		

MATERIAL 064THK  
5052-H32  
FINISH S404

YEL IRIDITE

SIZE	CODE IDENT. NO.	DWG NO.	ISSUE
A	82679	MS6674	Ø
SCALE	1:1	SHEET	OF

NOTICE TO PERSONS RECEIVING THIS DRAWING  
THE TECHNICAL MATERIEL CORPORATION claims proprietary right in the material disclosed hereon. This drawing is issued in confidence for engineering information only and may not be reproduced or used to manufacture anything shown hereon without permission from THE TECHNICAL MATERIEL CORPORATION to the user. This drawing is loaned for mutual assistance and is subject to recall at any time.

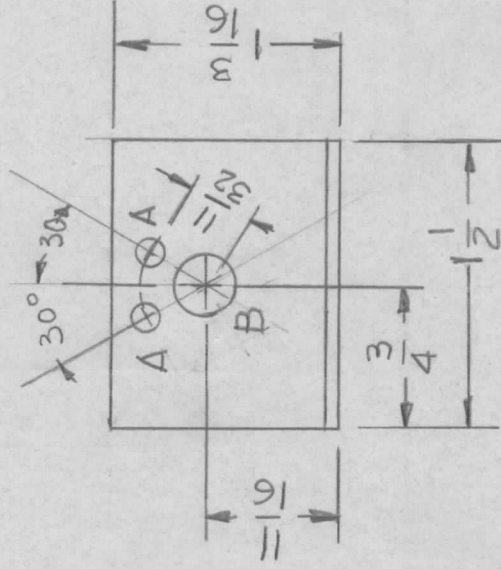
APPLICATION

REVISIONS

QTY	MODEL USED ON	ASSY NO.	LTR	DESCRIPTION	DATE	E.M.N.NO	DRAFT	CHKD	APPD
-----	---------------	----------	-----	-------------	------	----------	-------	------	------

1 GPR-110 ( )

[6660]



HOLES

A - 9/64 DIA

B - 5/16 DIA

C - 1/8 X 5/16 SLOT

No. *comp*  
Req

UNLESS OTHERWISE SPECIFIED:

1. USE MATERIAL THICKNESS FOR MAXIMUM RADIUS ON ALL BENDS.
2. ALL ANGULAR BENDS 90 DEGREES.
3. REMOVE ALL BURRS AND SHARP EDGES.

REQ'D	ITEM	PART NUMBER	DESCRIPTION	SYM.
LIST OF MATERIAL				
THE TECHNICAL MATERIEL CORP. MAMARONECK, NEW YORK				
BRACKET, DETENT				
UNLESS OTHERWISE SPECIFIED DIMENSIONS ARE IN INCHES AND INCLUDE CHEMICALLY APPLIED OR PLATED FINISHES				
DECIMALS	FRACTIONS			
.X ± .05	TOLS. 1/64	FINAL APPROVAL	DATE	
.XX ± .01	ANGLES 0°-30'	MECH. DES.	DATE	
.XXX ± .005		ELECT. DES.	DATE	
		CHECKED	DATE	
		DRAWN G. DE LUCIA	DATE 1-8-75	
MATERIAL .064 THK				
ALY 5052-H32				
FINISH 5404				
YEL IRIDITE				
SIZE A	CODE IDENT. NO. 82679	DWG NO. MS 6677	ISSUE X	
SCALE 1:1	SHEET	OF		

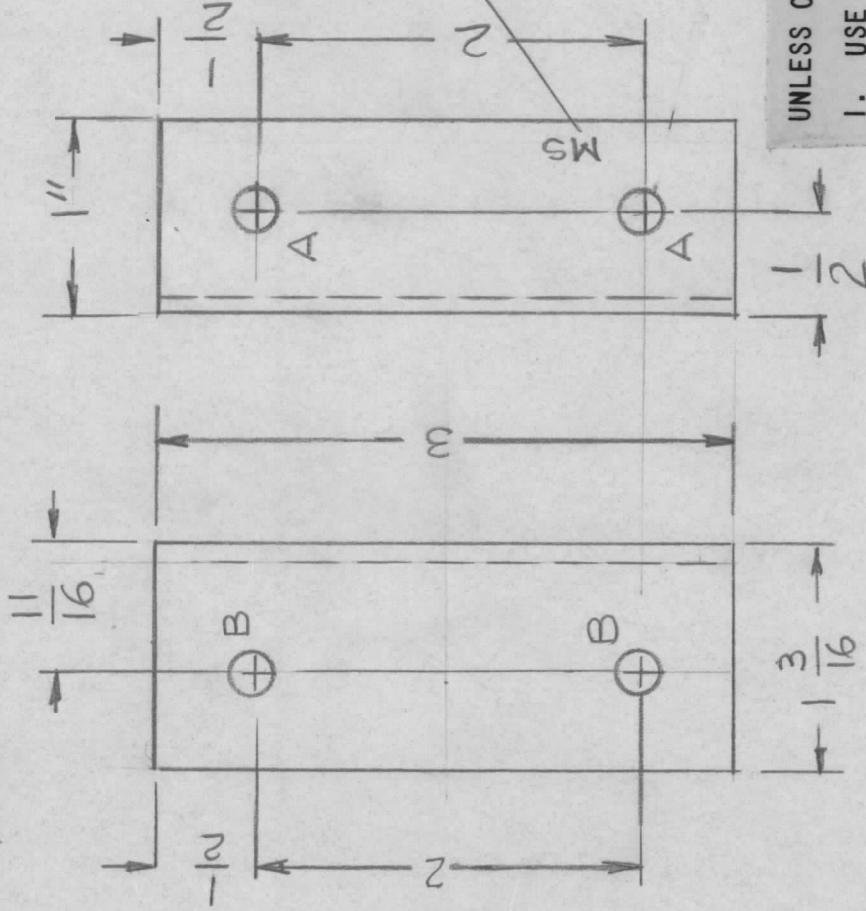
NOTICE TO PERSONS RECEIVING THIS DRAWING  
THE TECHNICAL MATERIEL CORPORATION claims proprietary right in the material disclosed hereon. This drawing is issued in confidence for engineering information only and may not be reproduced or used to manufacture anything shown hereon without permission from THE TECHNICAL MATERIEL CORPORATION to the user. This drawing is loaned for mutual assistance and is subject to recall at any time.

REVISIONS

APPLICATION

QTY	MODEL USED ON	ASSY NO.	LTR	DESCRIPTION	DATE	E.M.N.NO	DRAFT	CHKD	APPD
1	HFLM-10K/1		X	EXP. RELEASE					
			Ø	ORIGINAL RELEASE FOR PROD	8/76		CL		

HOLES:  
 A - 13/64 DIA 2 REQ  
 B - 15/64 DIA 2 REQ



UNLESS OTHERWISE SPECIFIED:

1. USE MATERIAL THICKNESS FOR MAXIMUM RADIUS ON ALL BENDS.
2. ALL ANGULAR BENDS 90 DEGREES.
3. REMOVE ALL BURRS AND SHARP EDGES.

REQ'D	ITEM	PART NUMBER	DESCRIPTION	SYM.
LIST OF MATERIAL				
<b>THE TECHNICAL MATERIEL CORP.</b> MAMARONECK, NEW YORK				
BRACKET, MTG BD				
FINAL APPROVAL	<i>[Signature]</i>	DATE	6-12-76	
MECH. DES.		DATE		
ELECT. DES.		DATE		
CHECKED		DATE		
DRAWN	G.D.L	DATE	3-6-76	
UNLESS OTHERWISE SPECIFIED DIMENSIONS ARE IN INCHES AND INCLUDE CHEMICALLY APPLIED OR PLATED FINISHES				
DECIMALS FRACTIONS				
.X ± .05 TOLS. 1/64				
.XX ± .01 ANGLES 0°-30'				
.XXX ± .005				
MATERIAL 1/8 THK ALU 5052-H32				
FINISH S404				
YEL. IRIDITE				

NOTICE TO PERSONS RECEIVING THIS DRAWING  
 THE TECHNICAL MATERIEL CORPORATION claims proprietary right in the material disclosed hereon. This drawing is issued in confidence for engineering information only and may not be reproduced or used to manufacture anything shown hereon without permission from THE TECHNICAL MATERIEL CORPORATION to the user. This drawing is loaned for mutual assistance and is subject to recall at any time.

SIZE	CODE IDENT. NO.	DWG NO.	ISSUE
A	82679	MS 6689	Ø
SCALE	1:1	SHEET	OF