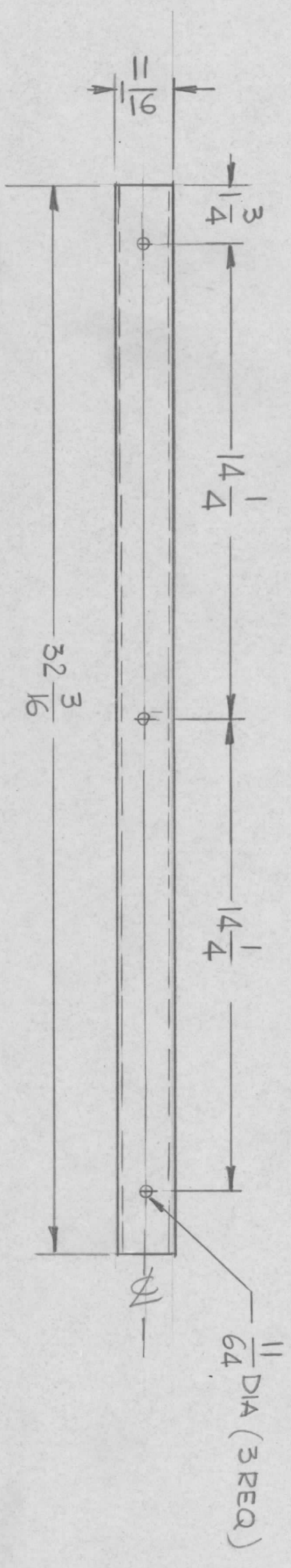


REVISIONS							
EM.N. NO.	DRAFT	CHKD	ZONE	LTR	DESCRIPTION	DATE	APPROVED
	GDL				ORIGINAL RELEASE	1-10-77	*



UNLESS OTHERWISE SPECIFIED:  
 1. USE MATERIAL THICKNESS FOR MAXIMUM RADIUS ON ALL BENDS.  
 2. ALL ANGULAR BENDS 90 DEGREES.  
 3. REMOVE ALL BURRS AND SHARP EDGES.

UNLESS OTHERWISE SPECIFIED:  
 1. USE MATERIAL THICKNESS FOR MAXIMUM RADIUS ON ALL BENDS.  
 2. ALL ANGULAR BENDS 90 DEGREES.  
 3. REMOVE ALL BURRS AND SHARP EDGES.

REQ'D	ITEM	PART NUMBER	DESCRIPTION	SYM.
			LIST OF MATERIAL	
			THE TECHNICAL MATERIEL CORP. MAMARONECK, NEW YORK	
			TRIM, FRONT BOTTOM	

DECIMALS	TOLS.	FRACTIONS	ANGLES
X ± .05		1/64	
.XX ± .01			° .30'
.XXX ± .005			

FINAL APPROVAL	MECH. DES.	DATE
GDL		7/6/76

ELECT. DES.	CHECKED	DATE
G.D.L.		5-14-76

SIZE	CODE IDENT. NO.	DWG NO.	ISSUE
B	82679	MS 6712	Ø

SCALE	SHEET	OF
1/4		

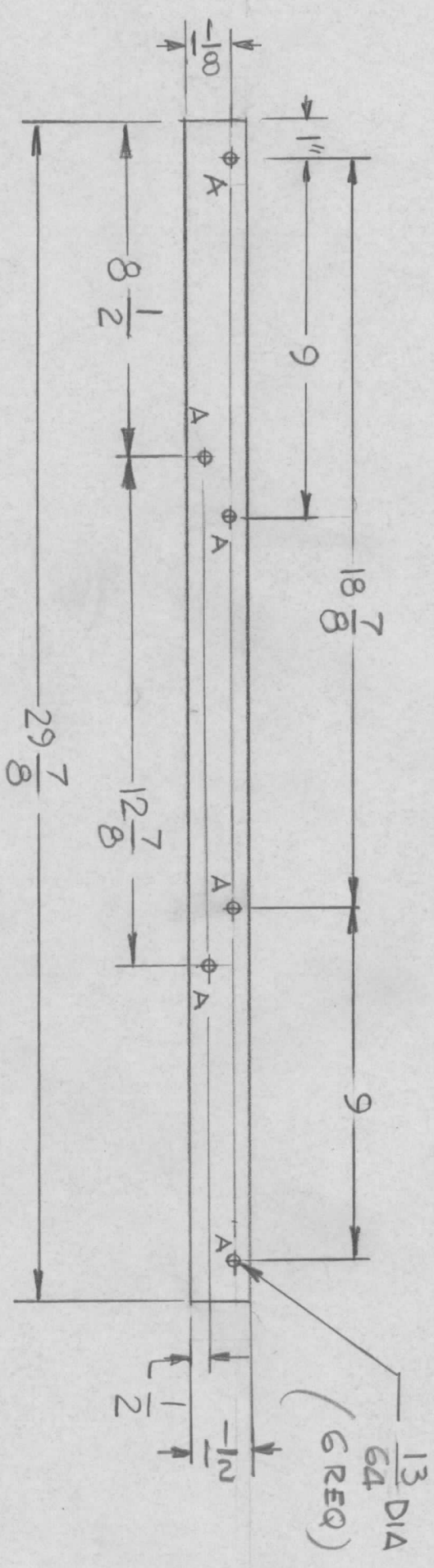
NOTICE TO PERSONS RECEIVING THIS DRAWING  
 THE TECHNICAL MATERIEL CORPORATION claims proprietary right in the material disclosed hereon. This drawing is issued in confidence for engineering information only and may not be reproduced or used to manufacture anything shown hereon without permission from THE TECHNICAL MATERIEL CORPORATION to the user. This drawing is loaned for mutual assistance and is subject to recall at any time.

QTY / UNIT	MODEL USED ON	ASS'Y NO.
1	HFLM-10K/1	

APPLICATION	CODE

REVISIONS				
EM.N NO.	DRAFT	CHKD	ZONE	LTR
				Ø
DESCRIPTION			DATE	APPROVED
			8/16	



REQ'D	ITEM	PART NUMBER	DESCRIPTION	SYM.
			LIST OF MATERIAL	

THE TECHNICAL MATERIEL CORP.  
MAMARONECK, NEW YORK

PLATE, SUPPORT SKIN

DECIMALS	TOLS.	FRACTIONS	ANGLES	DATE
.X ± .05		1/64		DATE
.XX ± .01				DATE
.XXX ± .005		0° .30'		DATE

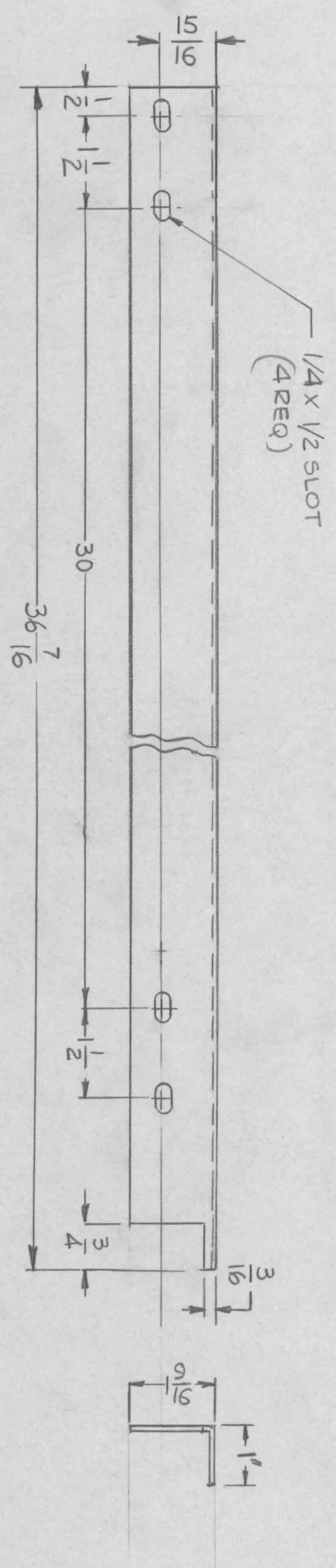
FINAL APPROVAL	DATE
<i>[Signature]</i>	8-12-76
MECH. DES.	DATE
ELECT. DES.	DATE
CHECKED	DATE
DRAWN	DATE

SIZE	CODE IDENT. NO.	DWG NO.	ISSUE
B	82679	MS 6715	Ø
SCALE	1/4	SHEET	OF

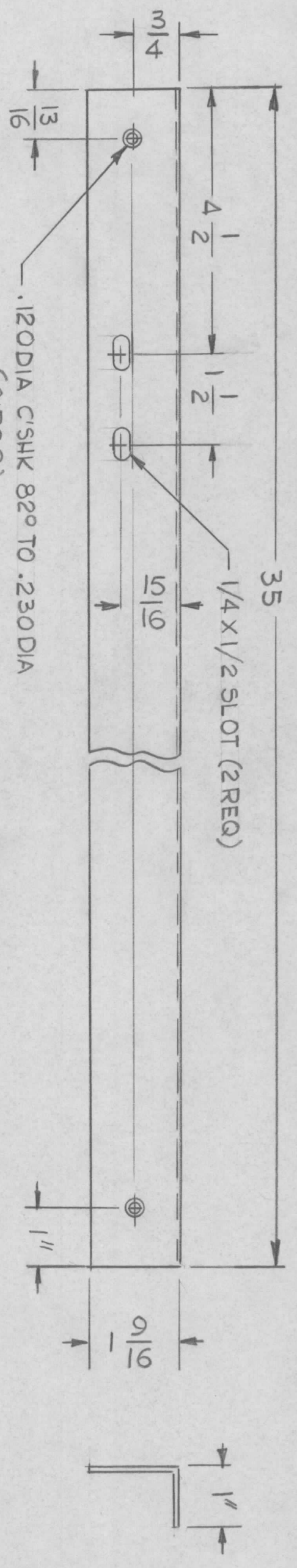
QTY / UNIT	MODEL USED ON	ASS'Y NO.
1	HFLM-102	
APPLICATION		
CODE		

NOTICE TO PERSONS RECEIVING THIS DRAWING  
THE TECHNICAL MATERIEL CORPORATION claims proprietary right in the material disclosed hereon. This drawing is issued in confidence for engineering information only and may not be reproduced or used to manufacture anything shown hereon without permission from THE TECHNICAL MATERIEL CORPORATION to the user. This drawing is loaned for mutual assistance and is subject to recall at any time.

REVISIONS				
EM.N. NO.	DRAFT	CHKD	ZONE	LTR
				Ø
DESCRIPTION			DATE	APPROVED
			8/16	



MS -2  
(1REQ)



MS  
(1REQ)

FINISH NOTES :  
S404 YEL IRIDITE  
S114 ZINC CHROMATE PRIMER  
S520 BLUE GRAY TEXTURATED VINYL

QTY / UNIT	MODEL USED ON	ASSY NO.
+	HFTM-40K/J	
APPLICATION		
	CODE	

NOTICE TO PERSONS RECEIVING THIS DRAWING  
THE TECHNICAL MATERIEL CORPORATION claims proprietary right in the material disclosed hereon. This drawing is issued in confidence for engineering information only and may not be reproduced or used to manufacture anything shown hereon without permission from THE TECHNICAL MATERIEL CORPORATION to the user. This drawing is loaned for mutual assistance and is subject to recall at any time.

DECIMALS	FRACTIONS
X ± .05	1/64
.XX ± .01	ANGLES
.XXX ± .005	0° - 30'

UNLESS OTHERWISE SPECIFIED DIMENSIONS ARE IN INCHES AND INCLUDE CHEMICALLY APPLIED OR PLATED FINISHES	FINAL APPROVAL	DATE
	<i>[Signature]</i>	8-12-76
	MECH. DES.	DATE
	ELECT. DES.	DATE
	CHECKED	DATE
	DRAWN	DATE

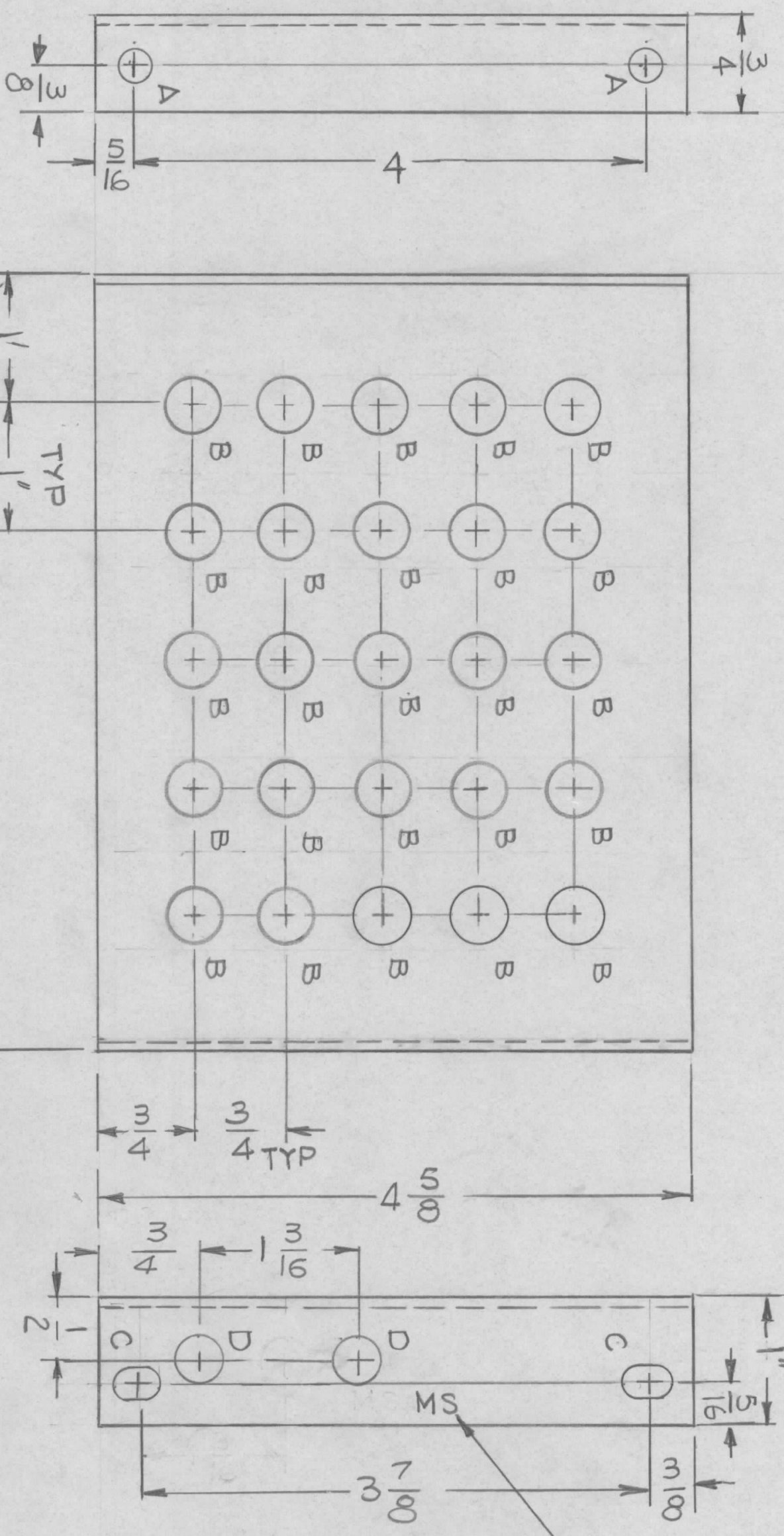
REQ'D	ITEM	PART NUMBER	DESCRIPTION	SYM.
			LIST OF MATERIAL	
			THE TECHNICAL MATERIEL CORP.	
			MAMARONECK, NEW YORK	

FINISH	SEE NOTES	SCALE	SIZE	CODE IDENT. NO.	DWG NO.	SHEET	OF	ISSUE
ALY 5052-H32		1/2	B	82679	MS 6716			Ø

MS 6725 AS SHOWN 1 REQ.  
 MS 6725-2 MIRROR IMAGE 1 REQ.

EM/N NO.	DRAFT	CHKD	ZONE	LTR	DESCRIPTION	DATE	APPROVED
					Original Release	1-10-77	*

REVISIONS



UNLESS OTHERWISE SPECIFIED:

- USE MATERIAL THICKNESS FOR MAXIMUM RADIUS ON ALL BENDS.
- ALL ANGULAR BENDS 90 DEGREES.
- REMOVE ALL BURRS AND SHARP EDGES.

QTY / UNIT	MODEL USED ON	ASSY NO.
	TOC 25-2	
	APPLICATION	
	CODE	

DECIMALS	FRACTIONS
X ± .05 TOLS.	1/64 ANGLES
.XX ± .01	0° .30'
.XXX ± .005	
MATERIAL .081THK	
ALY 5052-H32	
FINISH S404	
VEL IRIDITE	

REQ'D	ITEM	PART NUMBER	DATE
			1-10-77
			DATE
			DATE
			DATE
			DATE

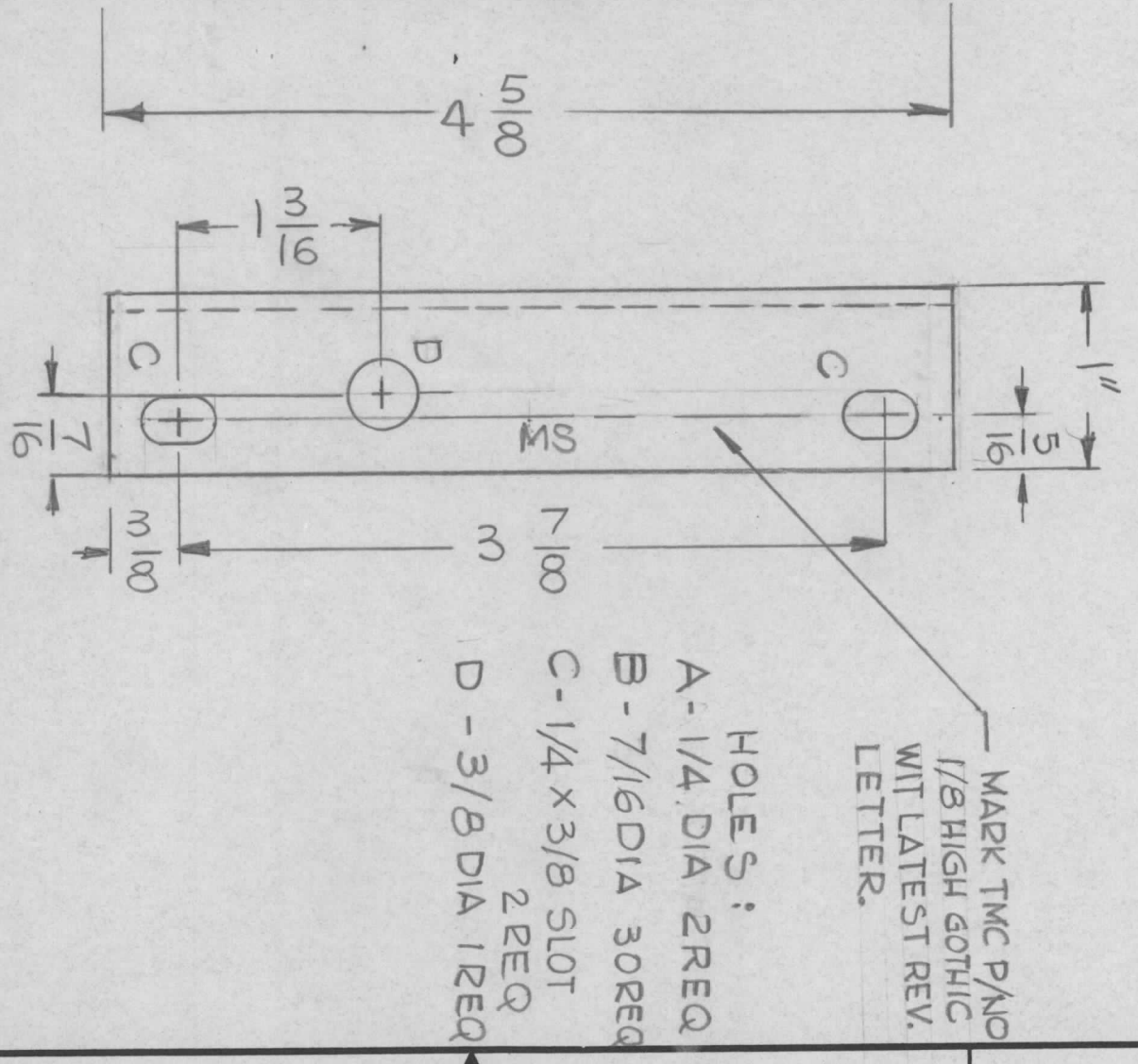
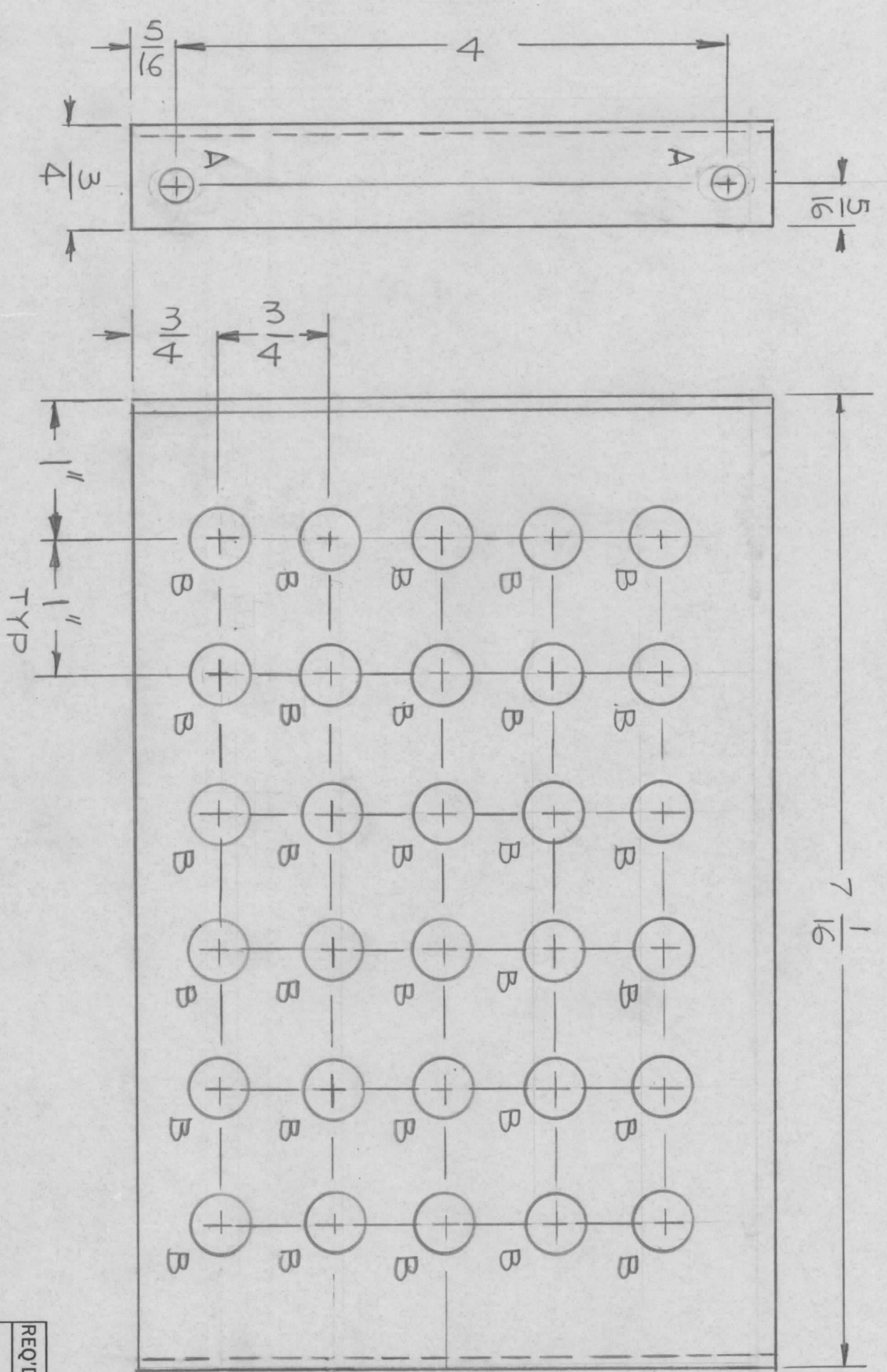
LIST OF MATERIAL

THE TECHNICAL MATERIEL CORP.	
MAMARONECK, NEW YORK	
BRACKET, RETAIN (AP151)	
SIZE B	CODE IDENT. NO. 82679
SCALE 1:1	DWG NO. MS 6725
	ISSUE

NOTICE TO PERSONS RECEIVING THIS DRAWING  
 THE TECHNICAL MATERIEL CORPORATION claims proprietary right in the material disclosed hereon. This drawing is issued in confidence for engineering information only and may not be reproduced or used to manufacture anything shown hereon without permission from THE TECHNICAL MATERIEL CORPORATION to the user. This drawing is loaned for mutual assistance and is subject to recall at any time.

MS 6726 AS SHOWN 1 REQ  
 MS 6726-2 MIRROR IMAGE 1 REQ

REVISIONS				DATE	APPROVED
EMN NO.	DRAFT	CHKD	ZONE	LTR	DESCRIPTION
✓	GDL				ORIGINAL RELEASE
					1-10-77



MARK TMC P/NO  
 1/8 HIGH GOTHIC  
 WIT LATEST REV.  
 LETTER.

HOLES:  
 A - 1/4 DIA 2REQ  
 B - 7/16 DIA 30REQ  
 C - 1/4 x 3/8 SLOT 2REQ  
 D - 3/8 DIA 1REQ

UNLESS OTHERWISE SPECIFIED:

1. USE MATERIAL THICKNESS FOR MAXIMUM RADIUS ON ALL BENDS.
2. ALL ANGULAR BENDS 90 DEGREES.
3. REMOVE ALL BURRS AND SHARP EDGES.

QTY / UNIT	1	MODEL USED ON	TOC-25-2	ASS'Y NO.	
APPLICATION		CODE			

DECIMALS	X ± .05	TOLS.	1/64
	.XX ± .01	ANGLES	0° .30'
	.XXX ± .005		
MATERIAL	.081 THK ALY 5052-H32		
FINISH	S404 YEL IRIDITE		

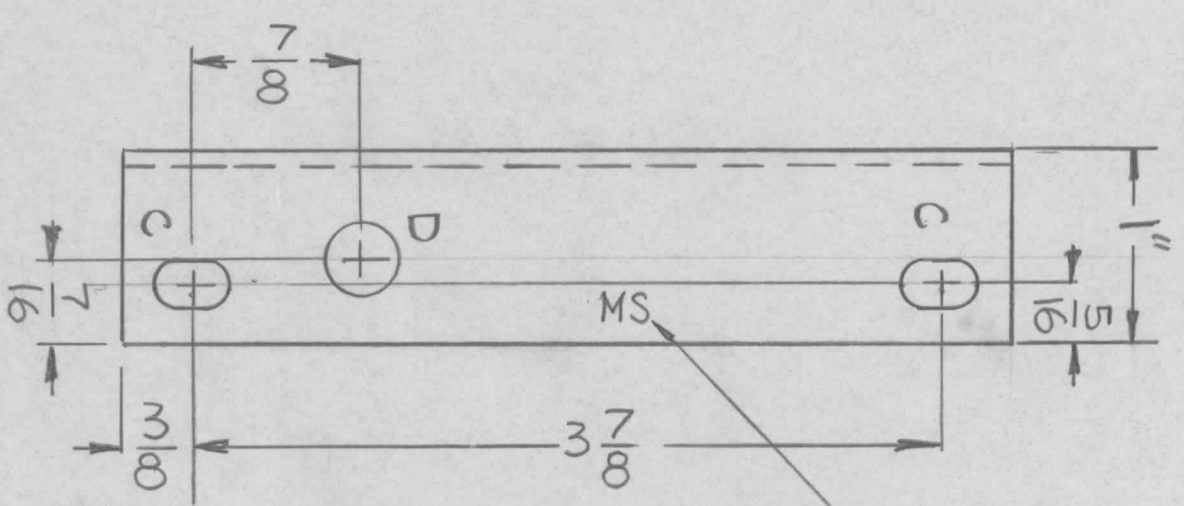
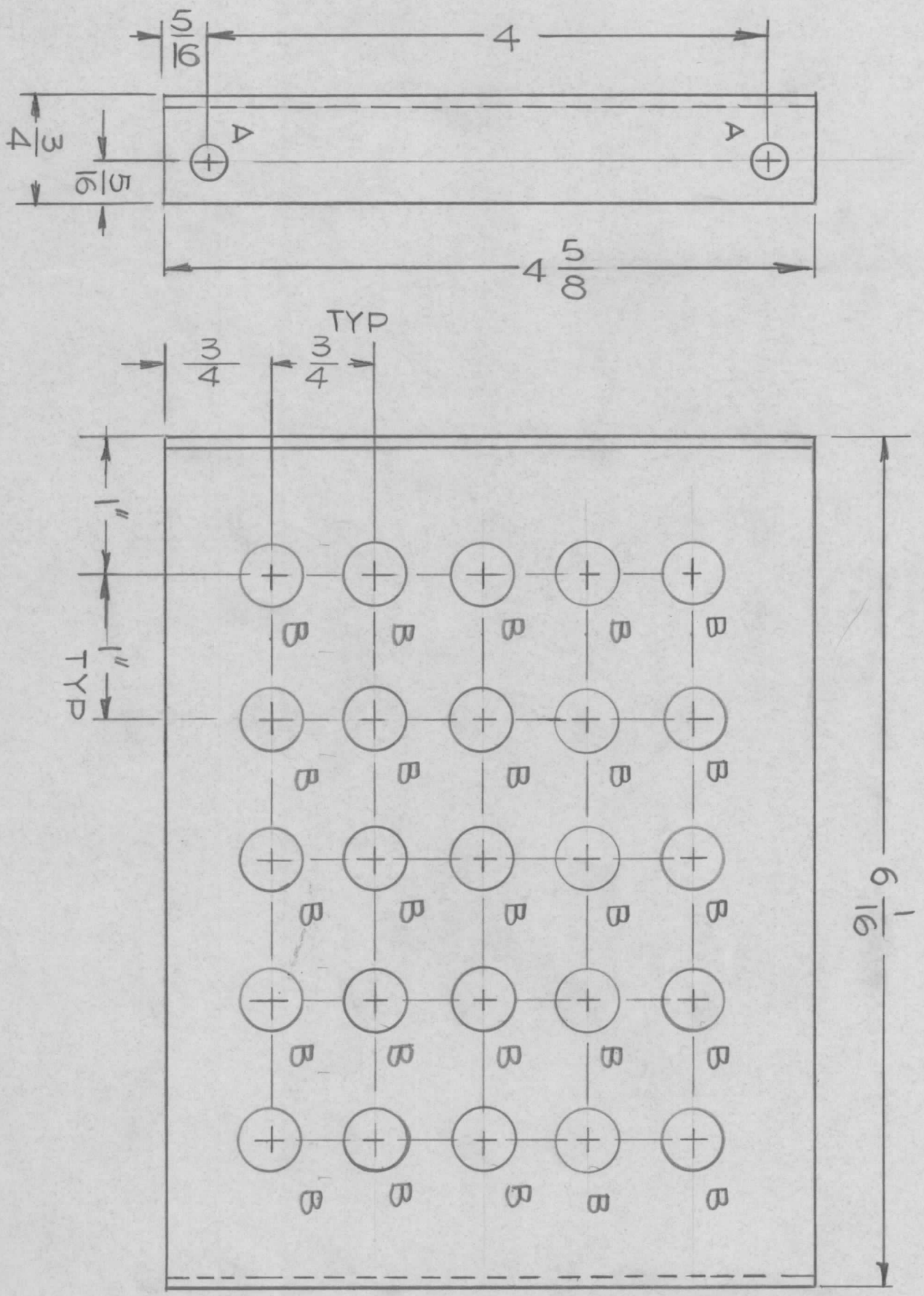
REQ'D	ITEM	PART NUMBER	DATE
			7-10-77
FINAL APPROV	MECH. DES.	ELECT. DES.	CHECKED
			G.D.L.
DRAWN	DATE	DATE	DATE
	6-8-76		

LIST OF MATERIAL			
THE TECHNICAL MATERIEL CORP.			
MAMARONECK, NEW YORK			
BRACKET RETAIN			
(AX 5175)			
SIZE	CODE IDENT. NO.	DWG NO.	ISSUE
B	82679	MS 6726	1
SCALE	1:1	SHEET	OF

NOTICE TO PERSONS RECEIVING THIS DRAWING  
 THE TECHNICAL MATERIEL CORPORATION claims proprietary right in the material disclosed hereon. This drawing is issued in confidence for engineering information only and may not be reproduced or used to manufacture anything shown hereon without permission from THE TECHNICAL MATERIEL CORPORATION to the user. This drawing is loaned for mutual assistance and is subject to recall at any time.

MS6727 AS SHOWN IREQ  
 MS6727-2 MIRROR IMAGE 1REQ

REVISIONS			
EMN. NO.	DRAFT	CHKD	ZONE
	GDL		
DESCRIPTION			LTR
ORIGINAL			
DATE	APPROVED		
1-10-77	*		



MARK TMC P/NO  
 WITH LATEST REV.  
 LETTER

HOLES  
 A - 1/4 DIA 2REQ  
 B - 7/16 DIA 25REQ  
 C - 1/4 X 3/8 SLOT 2REQ  
 D - 3/8 DIA 1REQ

REQ'D	ITEM	PART NUMBER	DESCRIPTION	SYM.
			LIST OF MATERIAL	

THE TECHNICAL MATERIEL CORP.  
 MAMARONECK, NEW YORK

BRACKET, RETAINING (AX5130)

QTY / UNIT	MODEL USED ON	ASSY NO.
	TOC-25-3	
	APPLICATION	
	CODE	

DECIMALS	FRACTIONS
X ± .05 TOLS.	1/64
.XX ± .01 ANGLES	0° .30'
.XXX ± .005	
MATERIAL	081THK
ALY	5052-H32
FINISH	S404
YEL	IRIDITE

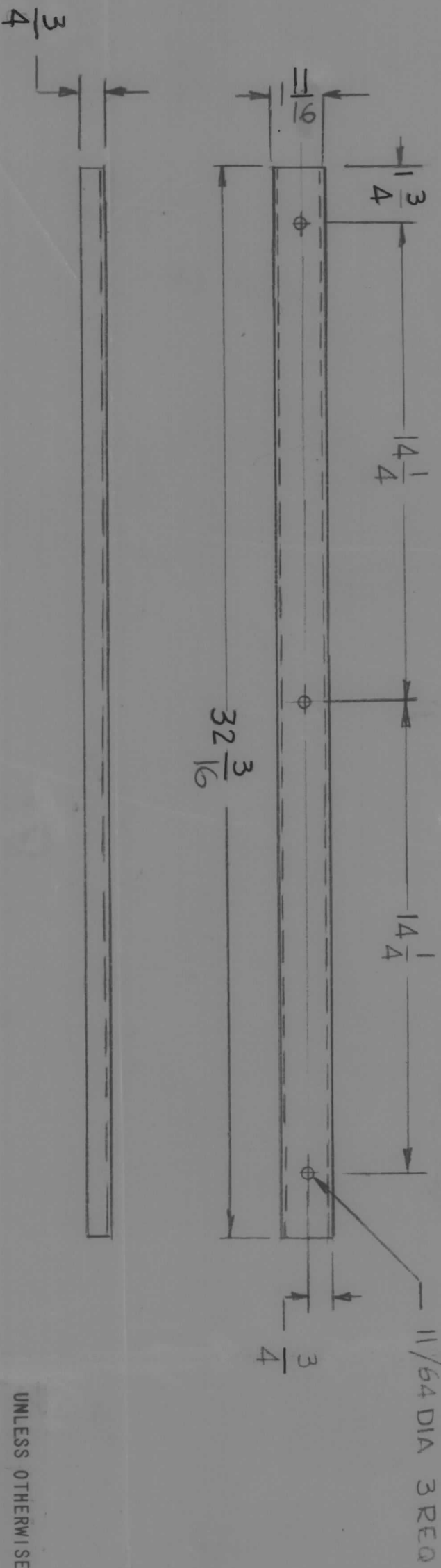
FINAL APPROVAL	DATE
<i>[Signature]</i>	1-10-77
MECH. DES.	DATE
ELECT. DES.	DATE
CHECKED	DATE
DRAWN	DATE
GDL	6-

SIZE	CODE IDENT. NO.	DWG NO.	ISSUE
B	82679	MS 6727	0
SCALE	1:1	SHEET	OF

- UNLESS OTHERWISE SPECIFIED:
1. USE MATERIAL THICKNESS FOR MAXIMUM RADIUS ON ALL BENDS.
  2. ALL ANGULAR BENDS 90 DEGREES.
  3. REMOVE ALL BURRS AND SHARP EDGES.
  4. MOUNT INSERTS AFTER FINISHING.

NOTICE TO PERSONS RECEIVING THIS DRAWING  
 THE TECHNICAL MATERIEL CORPORATION claims proprietary right in the material disclosed hereon. This drawing is issued in confidence for engineering information only and may not be reproduced or used to manufacture anything shown hereon without permission from THE TECHNICAL MATERIEL CORPORATION to the user. This drawing is loaned for mutual assistance and is subject to recall at any time.

REVISIONS				DATE	APPROVED
E.M.N. NO.	DRAFT	CHKD	ZONE	LTR	DESCRIPTION
				X	EXP. RELEASE
					8/16



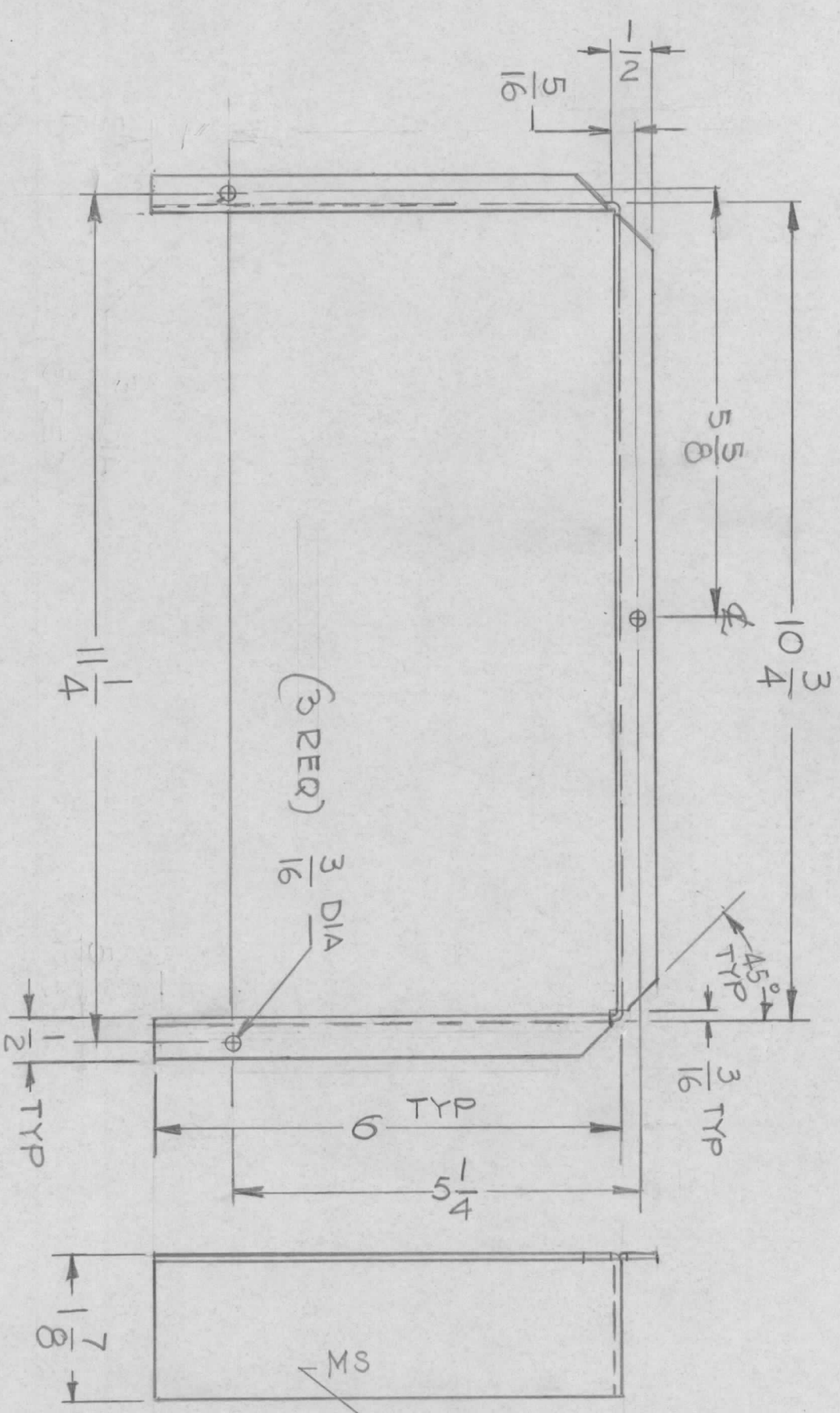
FINISH NOTES:  
 S404 YEL IRIDITE  
 S114 ZINC CHROMATE PRIMER  
 S520 BLUE GRAY TEXTURED  
 VINYL

- UNLESS OTHERWISE SPECIFIED:
1. USE MATERIAL THICKNESS FOR MAXIMUM RADIUS ON ALL BENDS.
  2. ALL ANGULAR BENDS 90 DEGREES.
  3. REMOVE ALL BURRS AND SHARP EDGES.

QTY / UNIT		MODEL USED ON		ASS'Y NO.	
1		HF LM-10K/1			
APPLICATION		CODE			
<p>UNLESS OTHERWISE SPECIFIED DIMENSIONS ARE IN INCHES AND INCLUDE CHEMICALLY APPLIED OR PLATED FINISHES</p> <p>DECIMALS: X ± .05 TOLS. FRACTIONS: 1/64 ANGLES: 0°-30°</p> <p>MATERIAL: 064THK ALUM 5052-H32</p> <p>FINISH: SEE NOTES</p>					
REQ'D	ITEM	PART NUMBER	DESCRIPTION	SYM.	
			LIST OF MATERIAL		
<p>FINAL APPROVAL: [Signature]</p> <p>MECH. DES. DATE: 8-12-76</p> <p>ELECT. DES. DATE: 6-25-76</p> <p>CHECKED DATE: [ ]</p> <p>DRAWN: GDL DATE: 6-25-76</p>			<p>THE TECHNICAL MATERIEL CORP.</p> <p>MAMARONECK, NEW YORK</p> <p>TRIM, FRONT BOTTOM</p>		
SIZE	CODE IDENT. NO.	DWG NO.	ISSUE		
B	82679	MS 6730	1		
SCALE	1/4	SHEET	OF		

NOTICE TO PERSONS RECEIVING THIS DRAWING  
 THE TECHNICAL MATERIEL CORPORATION claims proprietary right in the material disclosed hereon. This drawing is issued in confidence for engineering information only and may not be reproduced or used to manufacture anything shown hereon without permission from THE TECHNICAL MATERIEL CORPORATION to the user. This drawing is loaned for mutual assistance and is subject to recall at any time.

REVISIONS							
EMN. NO.	DRAFT	CHKD	ZONE	LTR	DESCRIPTION	DATE	APPROVED
~	Gdl	MS		Ø	ORIGINAL RELEASE FOR PROD.	9-22-76	*



UNLESS OTHERWISE SPECIFIED:

1. USE MATERIAL THICKNESS FOR MAXIMUM RADIUS ON ALL BENDS.
2. ALL ANGULAR BENDS 90 DEGREES.
3. REMOVE ALL BURRS AND SHARP EDGES.

MARK TMC PART No. 1/8 HIGH GOTHIC WITH LATEST REVISION LETTER

- FINISH NOTES:
1. S404 - IRIDITE 14-2 AL-COAT.
  2. S114 - ZINC CHROMATE PRIMER
  3. S115 - SMOOTH GRAY ENAMEL
- PRIME AND PAINT PER CUSTOMER'S SPECIFICATIONS

QTY / UNIT	MODEL USED ON	ASSY NO.
1	GPTA-1K J	
APPLICATION		
CODE		

DECIMALS	FRACTIONS
X ± .05	1/64
.XX ± .01	ANGLES
.XXX ± .005	0° - 30'

MATERIAL .064THK  
ALY 5052-H32

FINISH SEE NOTE

REQ'D	ITEM	PART NUMBER	DESCRIPTION	SYM.
			THE TECHNICAL MATERIEL CORP. MAMARONECK, NEW YORK	

FINAL APPROVA	MECH. DES.	DATE	ELECT. DES.	CHECKED	DATE	DRAWN	DATE	SIZE	CODE IDENT. NO.	DWG NO.	SHEET	OF	ISSUE
		8-12-76				G.D.L.	7-27-76	B	82679	MS 6732	1	1	1

LIST OF MATERIAL

HEAT, SHIELD

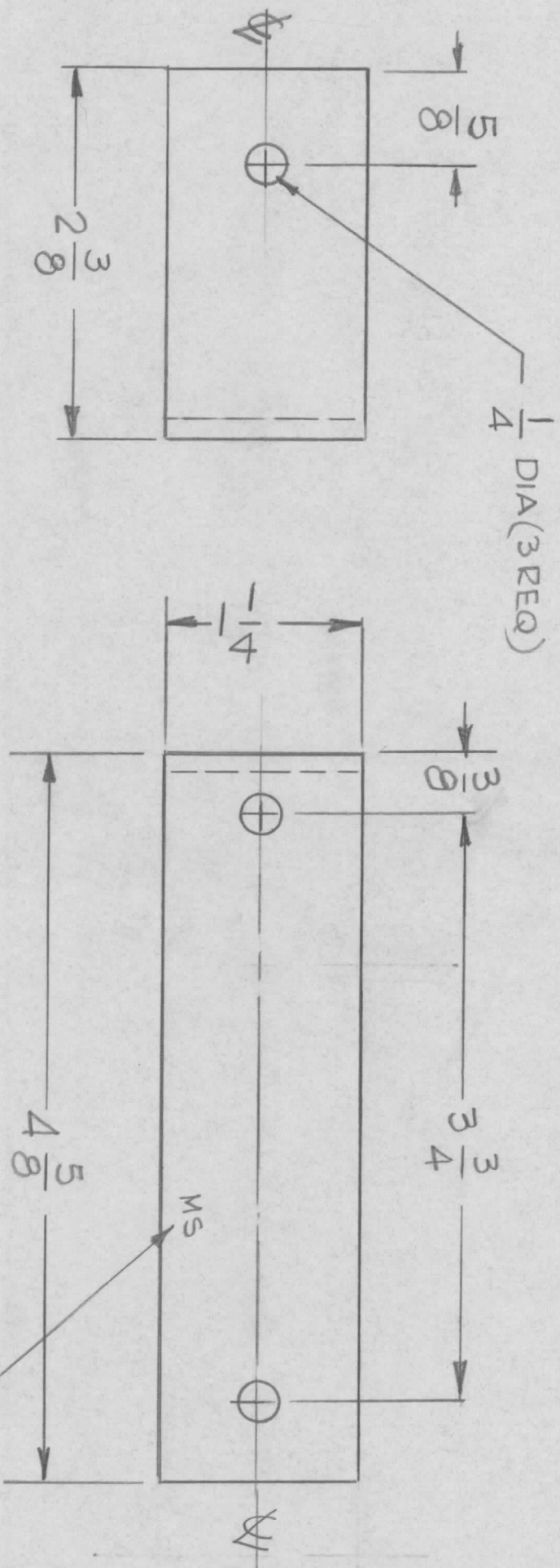
SCALE 1/2

NOTICE TO PERSONS RECEIVING THIS DRAWING

THE TECHNICAL MATERIEL CORPORATION claims proprietary right in the material disclosed hereon. This drawing is issued in confidence for engineering information only and may not be reproduced or used to manufacture anything shown hereon without permission from THE TECHNICAL MATERIEL CORPORATION to the user. This drawing is loaned for mutual assistance and is subject to recall at any time.



REVISIONS							
EM.N. NO.	DRAFT	CHKD	ZONE	LTR	DESCRIPTION	DATE	APPROVED
	CL			Ø		8/76	



- UNLESS OTHERWISE SPECIFIED:
1. USE MATERIAL THICKNESS FOR MAXIMUM RADIUS ON ALL BENDS.
  2. ALL ANGULAR BENDS 90 DEGREES.
  3. REMOVE ALL BURRS AND SHARP EDGES.

QTY / UNIT	2	MODEL USED ON	HFTM-40K J	ASS'Y NO.	
APPLICATION					
CODE					

NOTICE TO PERSONS RECEIVING THIS DRAWING

THE TECHNICAL MATERIEL CORPORATION claims proprietary right in the material disclosed hereon. This drawing is issued in confidence for engineering information only and may not be reproduced or used to manufacture anything shown hereon without permission from THE TECHNICAL MATERIEL CORPORATION to the user. This drawing is loaned for mutual assistance and is subject to recall at any time.

REQ'D	ITEM	PART NUMBER	DESCRIPTION	SYM.
			BRACKET, MTG BOARD	

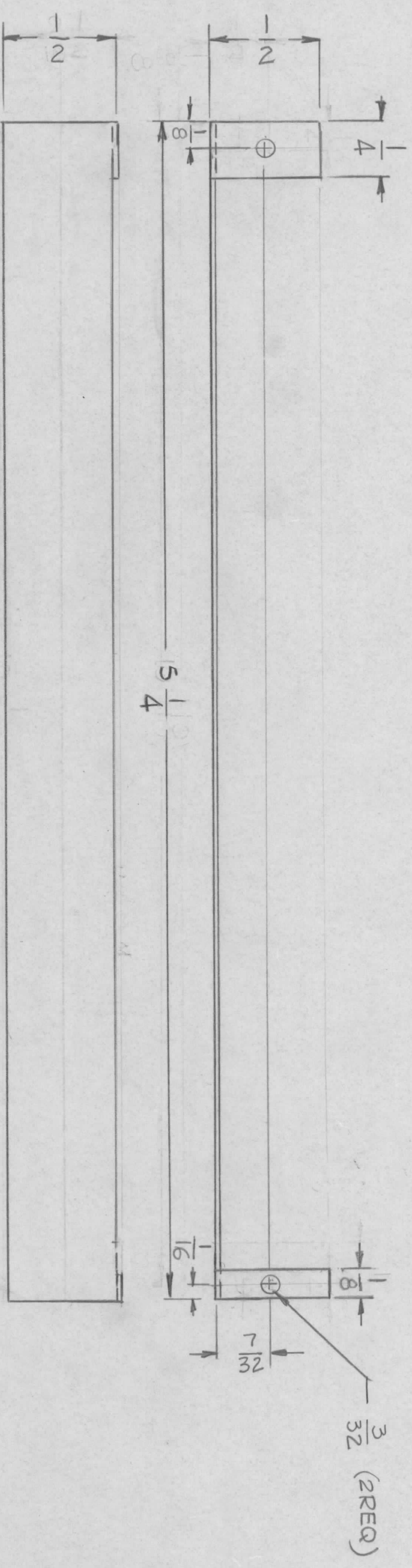
FINAL APPROVAL	DATE	MECH. DES.	DATE
<i>[Signature]</i>	8-12-76		
ELECT. DES.	DATE	CHECKED	DATE
		G.D.L	4-8-76

UNLESS OTHERWISE SPECIFIED DIMENSIONS ARE IN INCHES AND INCLUDE CHEMICALLY APPLIED OR PLATED FINISHES	
DECIMALS	FRACTIONS
X ± .05	1/64
.XX ± .01	ANGLES
.XXX ± .005	0° - 30'

MATERIAL	1/8 THK
ALUM	5052-H32
FINISH	S404
	VEL IRIDITE

THE TECHNICAL MATERIEL CORP.	MAMARONECK, NEW YORK		
SIZE	CODE IDENT. NO.	DWG NO.	ISSUE
B	82679	MS6733	Ø
SCALE	1:1	SHEET	OF

REVISIONS				DESCRIPTION	DATE	APPROVED	
EM.N. NO.	DRAFT	CHKD	ZONE	LTR	ORIG. RELEASE FOR PROD.	10-20-76	*
74	GDL	98B					



REF LD 3052

REQ'D ITEM	PART NUMBER	DESCRIPTION	SYM.
		LIST OF MATERIAL	

THE TECHNICAL MATERIEL CORP.  
MAMARONECK, NEW YORK

PLATE, BAND IDENT.

SIZE	CODE IDENT. NO.	DWG NO.	ISSUE
B	82679	MS 6734	1
SCALE	1:1	SHEET	OF

FINAL APPROVAL	MECH. DES.	DATE
<i>[Signature]</i>		
ELECT. DES.	CHECKED	DATE
DRAWN	DATE	
G.D.L.	8/19/76	

DECIMALS	FRACTIONS
X ± .05	1/64
.XX ± .01	ANGLES
.XXX ± .005	0° - 30'
MATERIAL - 0.51 THK	
AL ALY 5052-H32	
FINISH S404	
YEL IRIDITE	

QTY / UNIT	MODEL USED ON	ASSY NO.
1	ATSA-3	A5639
APPLICATION		
CODE		

UNLESS OTHERWISE SPECIFIED THIS DRAWING

THE TECHNICAL MATERIEL CORPORATION claims proprietary right in the material disclosed hereon. This drawing is issued in confidence for engineering information only and may not be reproduced or used to manufacture anything shown hereon without permission from THE TECHNICAL MATERIEL CORPORATION to the user. This drawing is loaned for mutual assistance and is subject to recall at any time.

- UNLESS OTHERWISE SPECIFIED:
- USE MATERIAL THICKNESS FOR MAXIMUM RADIUS ON ALL BENDS.
  - ALL ANGULAR BENDS 90 DEGREES.
  - REMOVE ALL BURRS AND SHARP EDGES.

5

4

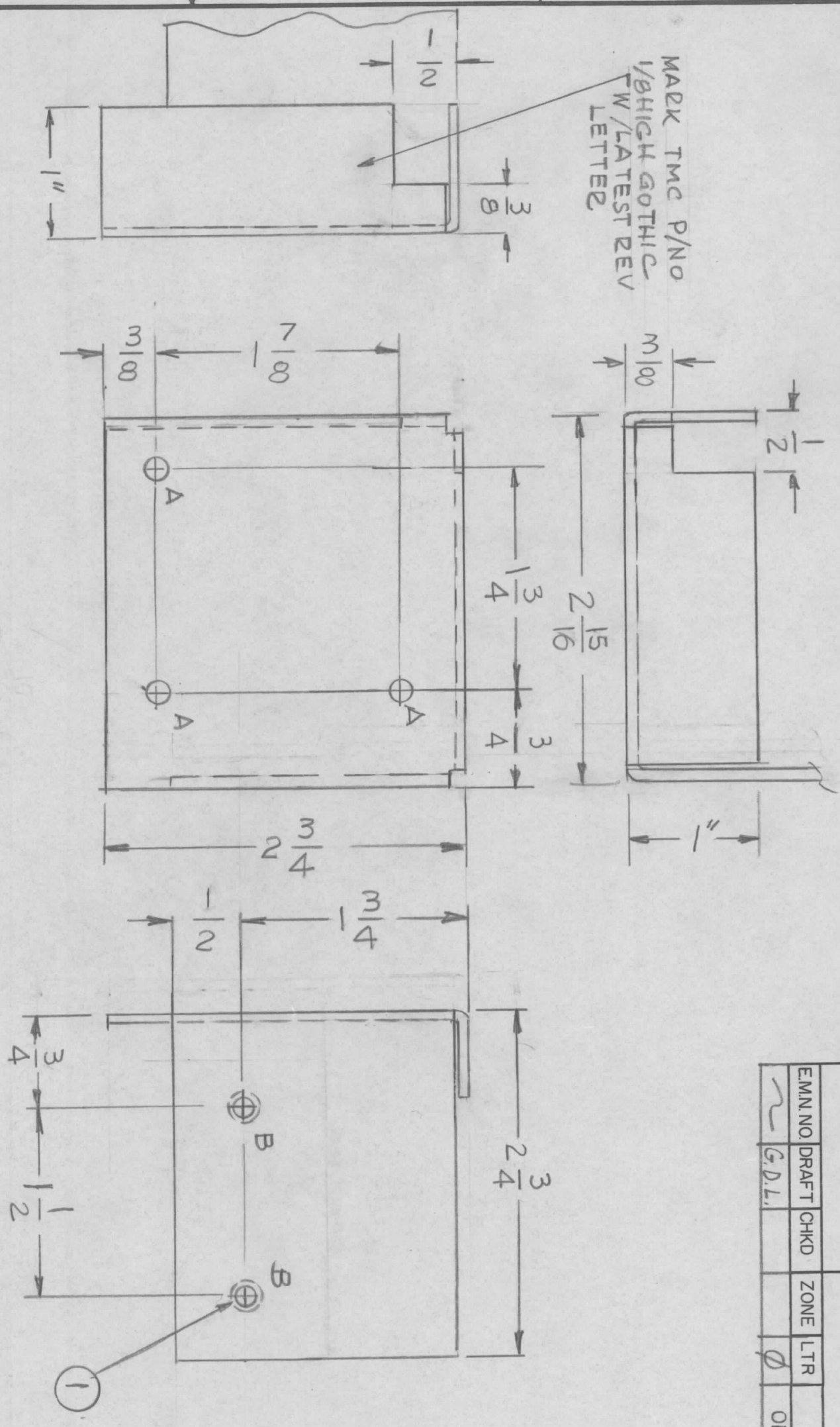
3

2

1

REVISIONS				
EM/N NO.	DRAFT	CHKD	ZONE	LTR
	G.D.L.			
DESCRIPTION			DATE	APPROVED
ORIGINAL RELEASE FOR PRODUCTION			3-8-77	*

MARK TMC P/NO  
1/8 HIGH GOTHIC  
TW/LATEST REV  
LETTER



HOLES :

- A - 15/64 DIA 3 REQ
- B - .221-.224 DIA 2 REQ

- UNLESS OTHERWISE SPECIFIED:
1. USE MATERIAL THICKNESS FOR MAXIMUM RADIUS ON ALL BENDS.
  2. ALL ANGULAR BENDS 90 DEGREES.
  3. REMOVE ALL BURRS AND SHARP EDGES.
  4. MOUNT INSERTS AFTER FINISHING.

QTY / UNIT		MODEL USED ON		ASS'Y NO.	
		APPLICATION		AX5213	
<p>NOTICE TO PERSONS RECEIVING THIS DRAWING</p> <p>THE TECHNICAL MATERIEL CORPORATION claims proprietary right in the material disclosed hereon. This drawing is issued in confidence for engineering information only and may not be reproduced or used to manufacture anything shown hereon without permission from THE TECHNICAL MATERIEL CORPORATION to the user. This drawing is loaned for mutual assistance and is subject to recall at any time.</p>					
FINISH		MATERIAL			
YEL IRIDITE		ALUM .091 THK			
S40A		ALUM 5052-H32			

DECIMALS		FRACTIONS	
.X ± .05	TOLS.	1/64	ANGLES
.XX ± .01		° .30'	
.XXX ± .005			

REQ'D	ITEM	PART NUMBER	DESCRIPTION	SYM.
2	1	NT129.0832-4	NUT, ROUND	B

FINAL APPROVAL	MECH. DES.	DATE
<i>[Signature]</i>		7/10/77
ELECT. DES.	DATE	CHECKED
DRAWN	DATE	CHECKED
G.D.L.	10-15-72	

LIST OF MATERIAL

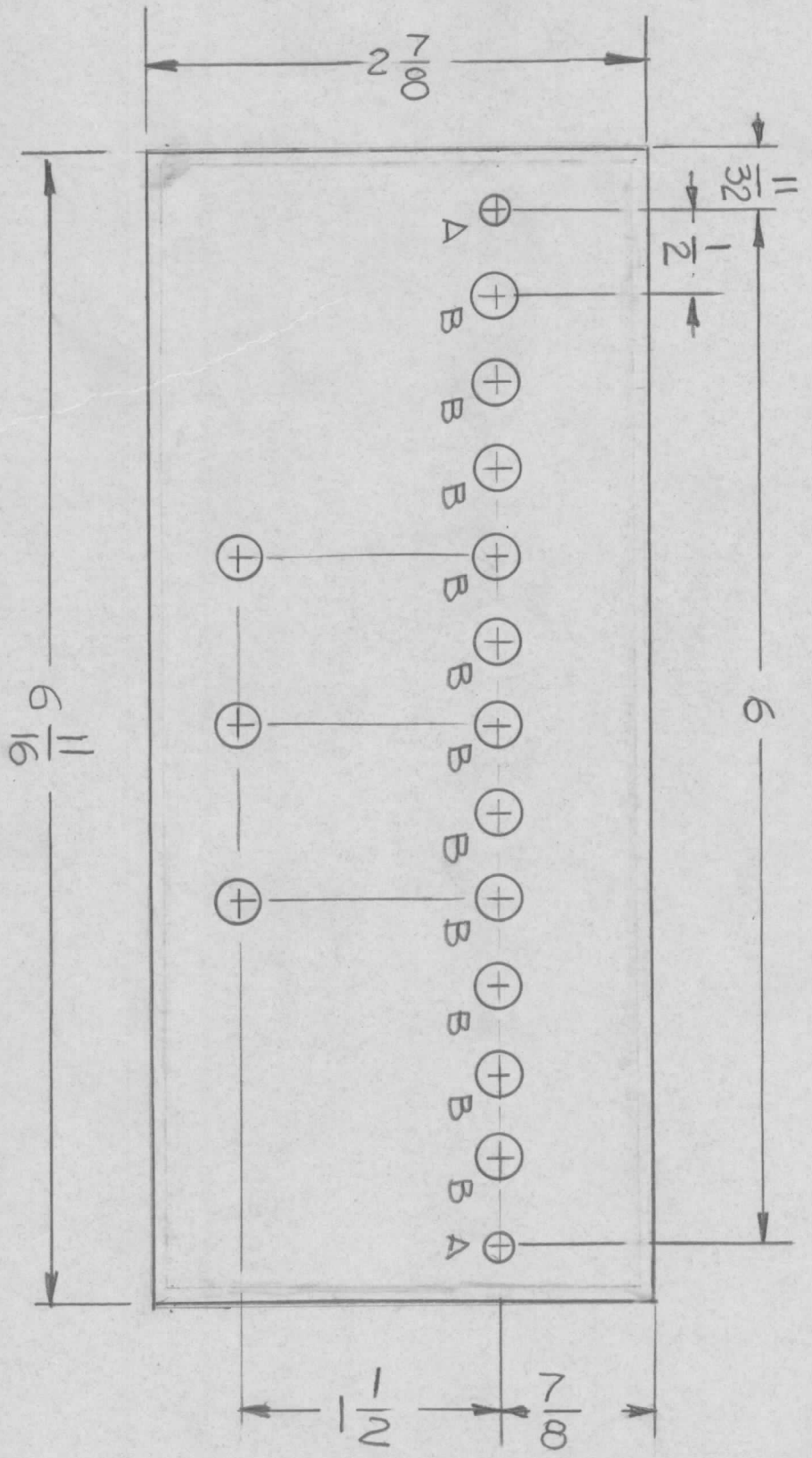
THE TECHNICAL MATERIEL CORP.  
MAMARONECK, NEW YORK

BRACKET, MTG XFMR

SIZE	CODE IDENT. NO.	DWG NO.	ISSUE
B	82679	MS 6749	Φ
SCALE		SHEET	OF

**MACHINING:**

1. MILL ALL EDGES.
2. HOLES MUST BE DRILLED, UNLESS OTHERWISE SPECIFIED.
3. LATERAL BOW OF PANEL MUST BE KEPT TO .031 TOLERANCE.
4. PANEL MUST BE FREE OF ALL MACHINING MARKS, GOUGES AND SCRATCHES. IF NECESSARY, SAND FRONT OF PANEL WITH NO. 120 GRIT SANDPAPER.



**HOLES**  
 A - 11/64 DIA 2 REQ  
 B - 1/4 DIA 11 REQ

REVISIONS				DATE	APPROVED
EM.N. NO.	DRAFT	CHKD	ZONE	LTR	
DESCRIPTION				DATE	APPROVED
ORIGINAL RELEASE FOR PRODUCTION				1-13-78	

REQ'D	ITEM	PART NUMBER	DESCRIPTION	SYM.
			LIST OF MATERIAL	

**THE TECHNICAL MATERIEL CORP.**  
 MAMARONECK, NEW YORK

PLATE FRONT PANEL  
 ADAPTER

SIZE	CODE IDENT. NO.	DWG NO.	ISSUE
B	82679	MS 6751	1
SCALE			SHEET OF

FINAL APPROVAL	DATE
<i>[Signature]</i>	1-13-78
MECH. DES.	DATE
ELECT. DES.	DATE
CHECKED	DATE
DRAWN	DATE
G.D.L.	10-21-76

UNLESS OTHERWISE SPECIFIED DIMENSIONS ARE IN INCHES AND INCLUDE CHEMICALLY APPLIED OR PLATED FINISHES	
DECIMALS	FRACTIONS
X ± .05	1/64
.XX ± .01	TOLS. ANGLES
.XXX ± .005	0° - 30'
MATERIAL	THK
ALUM 5052-H32	.051
FINISH	SEE NOTE

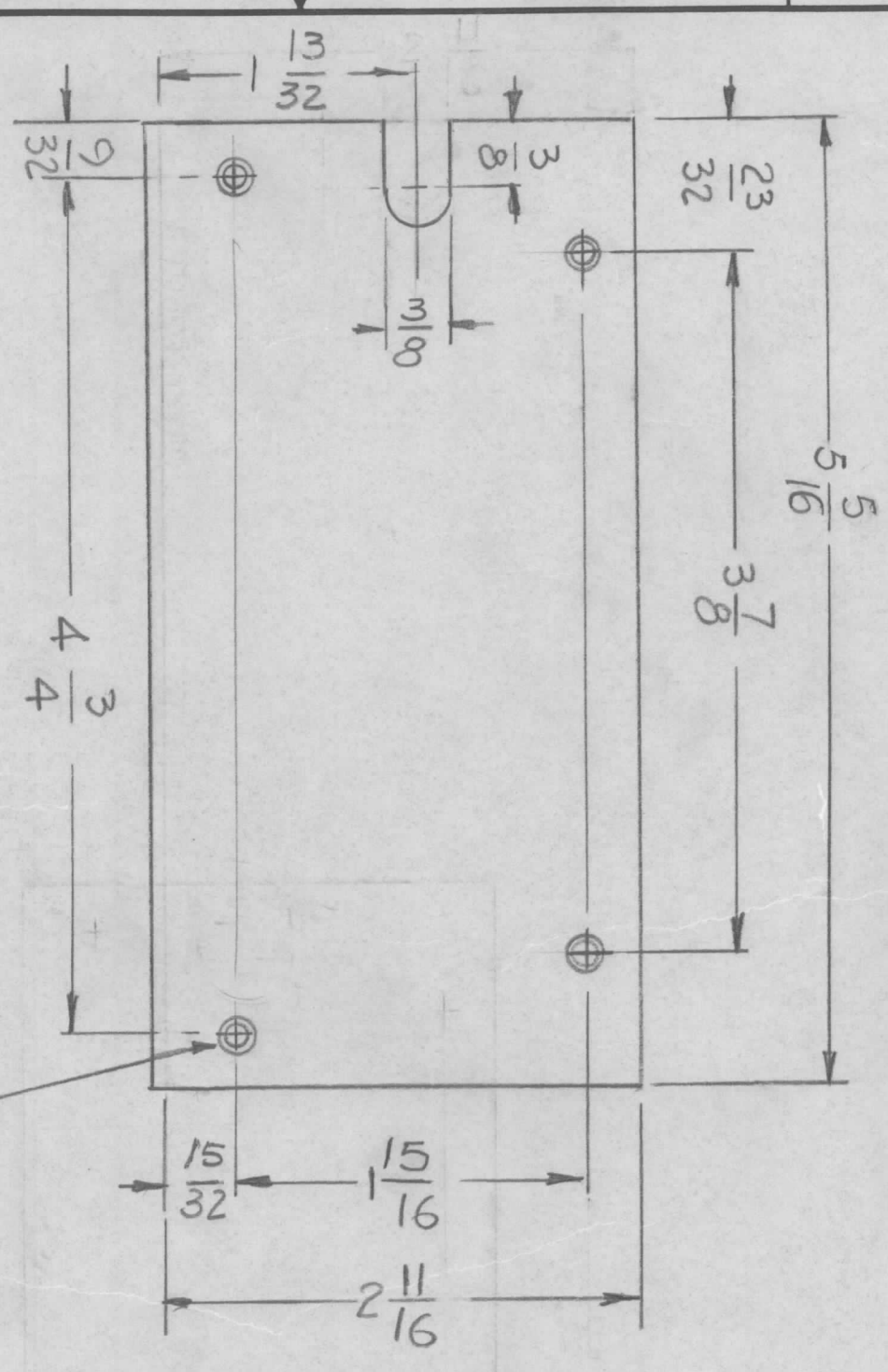
QTY / UNIT	MODEL USED ON	ASSY NO.
	TMA-1KC	
APPLICATION		
CODE		

**FINISH NOTES:**

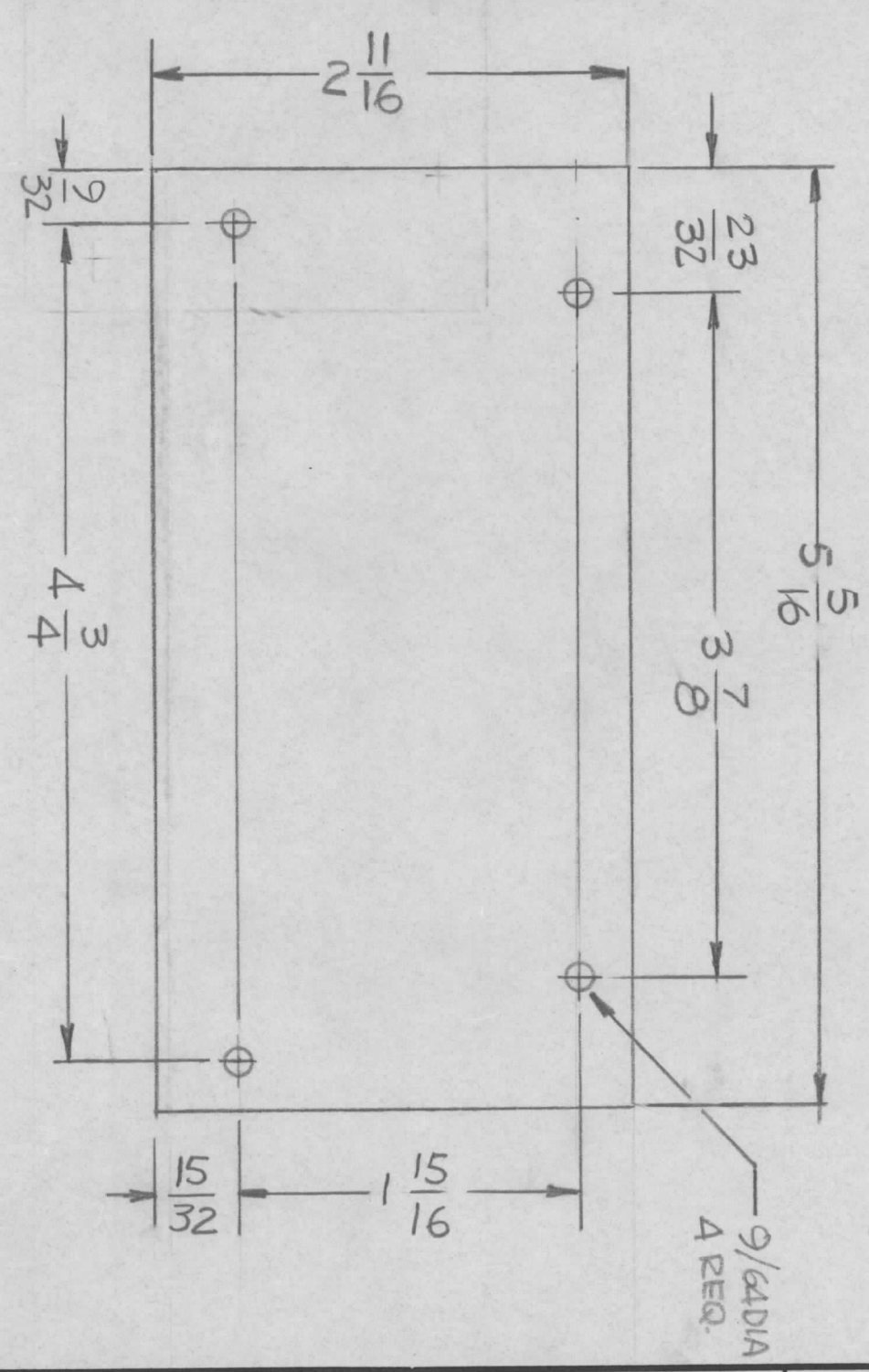
1. S404 - IRIDITE 14-2 AL-COAT.
2. S114 - ZINC CHROMATE PRIMER
3. PAINT BLACK MATTE

**NOTICE TO PERSONS RECEIVING THIS DRAWING**  
 THE TECHNICAL MATERIEL CORPORATION claims proprietary right in the material disclosed hereon. This drawing is issued in confidence for engineering information only and may not be reproduced or used to manufacture anything shown hereon without permission from THE TECHNICAL MATERIEL CORPORATION. This drawing is loaned for mutual assistance and is subject to return.

REVISIONS			
EM.N. NO.	DRAFT	CHKD	ZONE
	dw		
LTR	DESCRIPTION	DATE	APPROVED
Ø	ORIGINAL RELEASE	9-22-80	



.120 DIA CSINK82° TO  
.230 DIA 4 REQ.



9/64 DIA  
4 REQ.

MS6771-1  
(1 REQ)

MS6771-2  
(1 REQ)

QTY / UNIT	HFTA-10K	ASS'Y NO.	AX 5218
MODEL USED ON		APPLICATION	
CODE		CODE	

DECIMALS	FRACTIONS
.X ± .05	1/64
.XX ± .01	ANGLES
.XXX ± .005	0° .30'

UNLESS OTHERWISE SPECIFIED DIMENSIONS ARE IN INCHES AND INCLUDE CHEMICALLY APPLIED OR PLATED FINISHES	FINAL APPROVAL	DATE
	MB	
MECH. DES.		DATE
ELECT. DES.		DATE
CHECKED		DATE
DRAWN	GDL	DATE

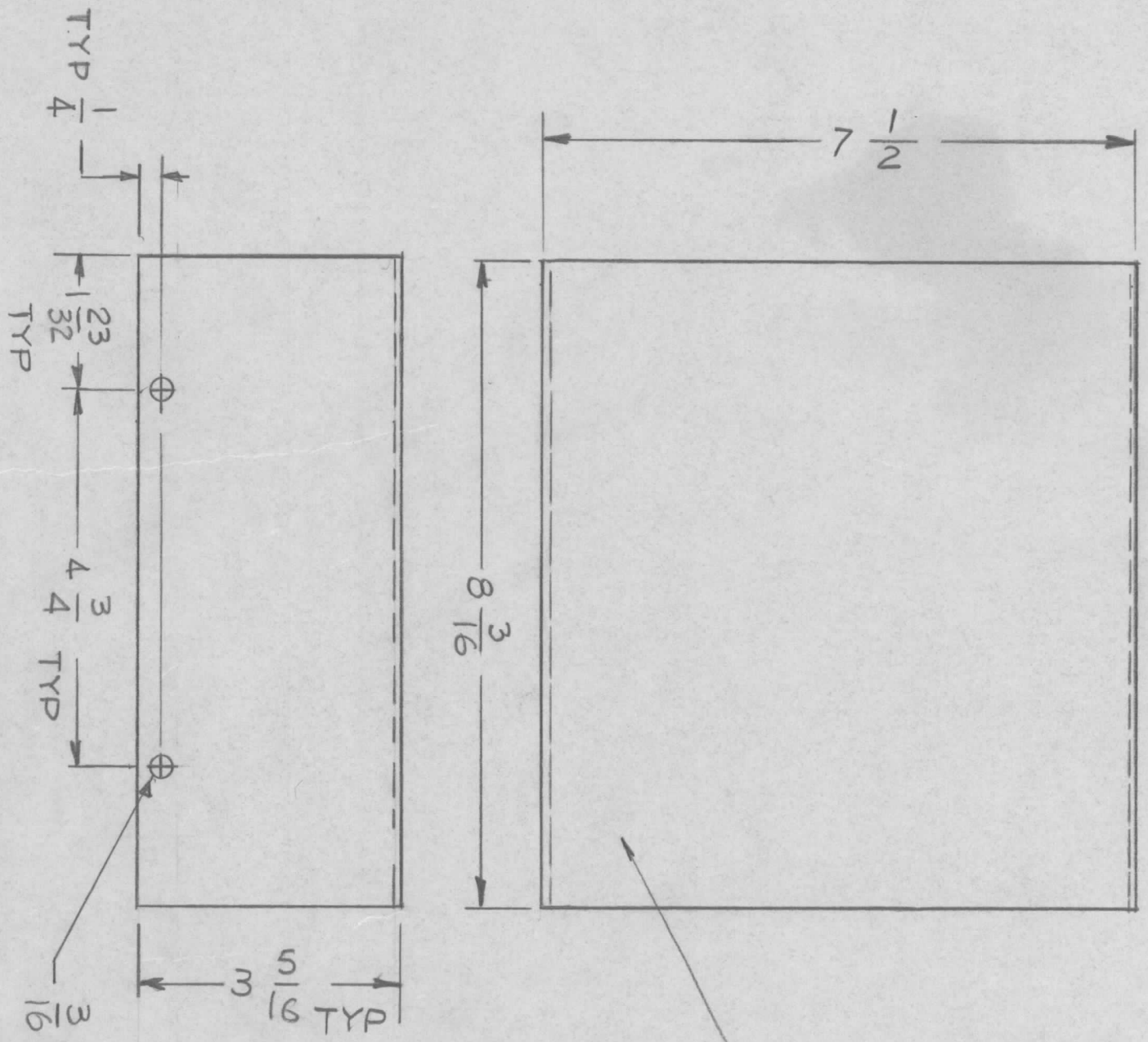
LIST OF MATERIAL			
REQ'D ITEM	PART NUMBER	DESCRIPTION	SYM.
THE TECHNICAL MATERIEL CORP. MAMARONECK, NEW YORK			
COVER, CHASSIS			
SIZE	CODE IDENT. NO.	DWG NO.	ISSUE
B	82679	MS6771	Ø
SCALE	1:1	SHEET	OF

NOTICE TO PERSONS RECEIVING THIS DRAWING  
THE TECHNICAL MATERIEL CORPORATION claims proprietary right in the material disclosed hereon. This drawing is issued in confidence for engineering information only and may not be reproduced or used to manufacture anything shown hereon without permission from THE TECHNICAL MATERIEL CORPORATION to the user. This drawing is loaned for mutual assistance and is subject to recall at any time.

REVISIONS				DATE	APPROVED
EM.N. NO.	DRAFT	CHKD	ZONE	LTR	DESCRIPTION

MARK TMC PART NUMBER  
1/8 HIGH GOTHIC WITH LATEST  
REVISION LETTER

UNLESS OTHERWISE SPECIFIED:  
1. USE MATERIAL THICKNESS FOR MAXIMUM RADIUS ON ALL BENDS.  
2. ALL ANGULAR BENDS 90 DEGREES.  
3. REMOVE ALL BURRS AND SHARP EDGES.



QTY / UNIT	1	MODEL USED ON	KIT 424	ASS'Y NO.	AK5222
APPLICATION					
CODE					

NOTICE TO PERSONS RECEIVING THIS DRAWING  
THE TECHNICAL MATERIEL CORPORATION claims proprietary right in the material disclosed hereon. This drawing is issued in confidence for engineering information only and may not be reproduced or used to manufacture anything shown hereon without permission from THE TECHNICAL MATERIEL CORPORATION to the user. This drawing is loaned for mutual assistance and is subject to recall at any time.

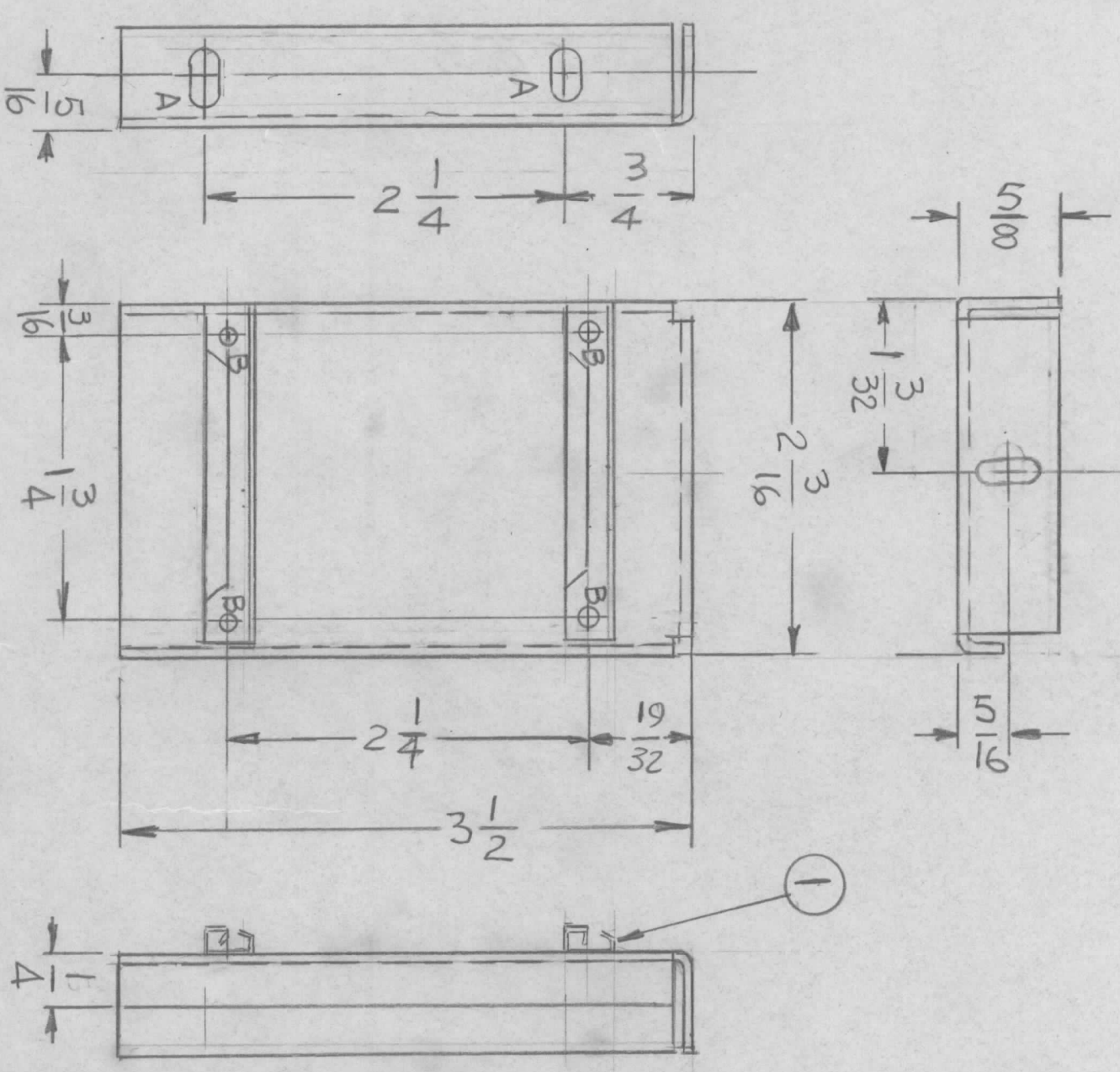
DECIMALS	X ± .05	TOLS.	FRACTIONS	1/64
	.XX ± .01		ANGLES	0° .30'
	.XXX ± .005			
MATERIAL .062 THK				
FINISH S404				
YEL IRIDITE				

REQ'D	ITEM	PART NUMBER	DESCRIPTION	SYM.
			LIST OF MATERIAL	
FINAL APPROVAL MECH. DES. <i>R.U.W.</i> DATE 3-24-77 ELECT. DES. DATE CHECKED DATE DRAWN G.D.L. DATE 2-24-77				
THE TECHNICAL MATERIEL CORP. MAMARONECK, NEW YORK				
COVER, CHASSIS				
SIZE	CODE IDENT. NO.	DWG NO.	ISSUE	
B	82679	MS6786		
SCALE	1/2	SHEET	OF	

REVISIONS				DATE	APPROVED
EM.N. NO.	DRAFT	CHKD	ZONE	LTR	DESCRIPTION

MS6789-1 AS SHOWN  
 MS6789-2 MIRROR IMAGE

HOLES:  
 A - 3/16 x 3/8 SLOT 3 REQ.  
 B - .067 DIA 4 REQ



UNLESS OTHERWISE SPECIFIED:

1. USE MATERIAL THICKNESS FOR MAXIMUM RADIUS ON ALL BENDS.
2. ALL ANGULAR BENDS 90 DEGREES.
3. REMOVE ALL BURRS AND SHARP EDGES.
4. MOUNT INSERTS AFTER FINISHING.

QTY / UNIT	MODEL USED ON	ASS'Y NO.
	AX 5221	
APPLICATION		
CODE		

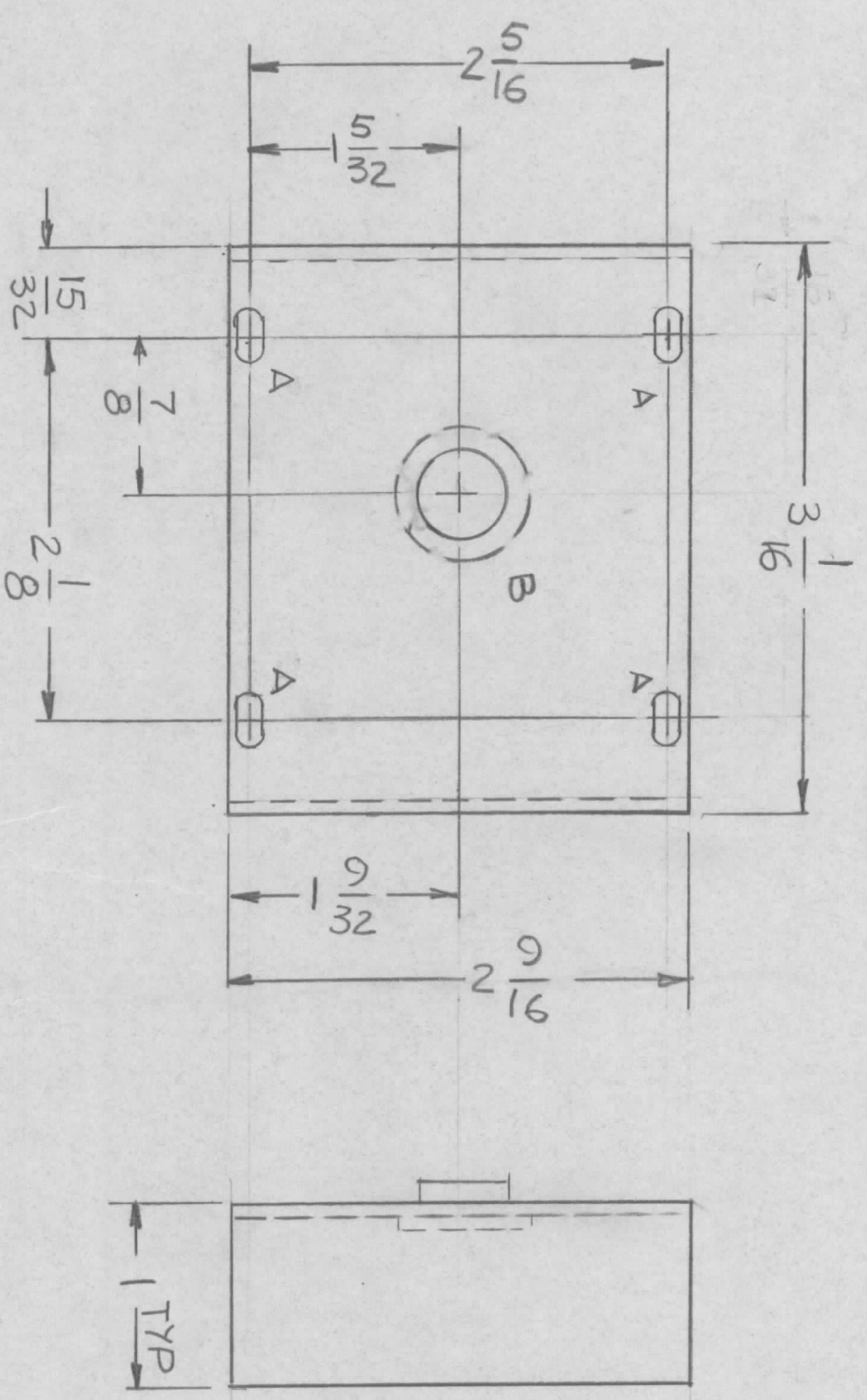
DECIMALS	FRACTIONS
X ± .05	1/64
.XX ± .01	ANGLES
.XXX ± .005	0° - 30'

REQ'D	ITEM	PART NUMBER	DESCRIPTION	SYM.
4	2	EY100-4	RIVET	
2	1	CU 157	RETAINER PC BD	

FINAL APPROVAL		DATE	LIST OF MATERIAL	
MECH. DES.	ELECT. DES.	DATE	THE TECHNICAL MATERIEL CORP.	
CHECKED	DRAWN	DATE	MAMARONECK, NEW YORK	
	G.D.L.	2-22-77	BRACK MTG. PC. BD	
SIZE	CODE IDENT. NO.	DWG NO.	ISSUE	
B	82679	MS 6789	K	
SCALE	1:1	SHEET	OF	

NOTICE TO PERSONS RECEIVING THIS DRAWING  
 THE TECHNICAL MATERIEL CORPORATION claims proprietary right in the material disclosed hereon. This drawing is issued in confidence for engineering information only and may not be reproduced or used to manufacture anything shown hereon without permission from THE TECHNICAL MATERIEL CORPORATION to the user. This drawing is loaned for mutual assistance and is subject to recall at any time.

REVISIONS				DATE	APPROVED
EM.N. NO.	DRAFT	CHKD	ZONE	LTR	DESCRIPTION



HOLES -  
 A -  $9/64 \times 9/32$  SLOT 4REQ  
 B - .5000  $\pm$ .0005 DIA 1REQ

- UNLESS OTHERWISE SPECIFIED:
1. USE MATERIAL THICKNESS FOR MAXIMUM RADIUS ON ALL BENDS.
  2. ALL ANGULAR BENDS 90 DEGREES.
  3. REMOVE ALL BURRS AND SHARP EDGES.
  4. MOUNT INSERTS AFTER FINISHING.

QTY / UNIT	1	MODEL USED ON	GPT-10KLF	ASS'Y NO.	A5703
APPLICATION					
CODE					

NOTICE TO PERSONS RECEIVING THIS DRAWING  
 THE TECHNICAL MATERIEL CORPORATION claims proprietary right in the material disclosed hereon. This drawing is issued in confidence for engineering information only and may not be reproduced or used to manufacture anything shown hereon without permission from THE TECHNICAL MATERIEL CORPORATION to the user. This drawing is loaned for mutual assistance and is subject to recall at any time.

DECIMALS	X $\pm$ .05	TOLS.	FRACTIONS	1/64
	.XX $\pm$ .01		ANGLES	$0^\circ - 30'$
	.XXX $\pm$ .005			
MATERIAL	ALUM. 5052-H32			
FINISH	S404			
	YEL IRIDITE			

REQ'D	ITEM	PART NUMBER	DESCRIPTION	SYM.
1	1	BB.118-37	BEADING, FLANGE TYPE	

LIST OF MATERIAL  
 THE TECHNICAL MATERIEL CORP.  
 MAMARONECK, NEW YORK  
 COVER GEAR BOX

FINAL APPROVAL	DATE	MECH. DES.	DATE	ELECT. DES.	DATE	CHECKED	DATE	DRAWN	DATE	SIZE	CODE IDENT. NO.	DWG NO.	ISSUE
								G.D.L.	4-14-77	B	82679	MS 6792	
SCALE 1:1											SHEET	OF	