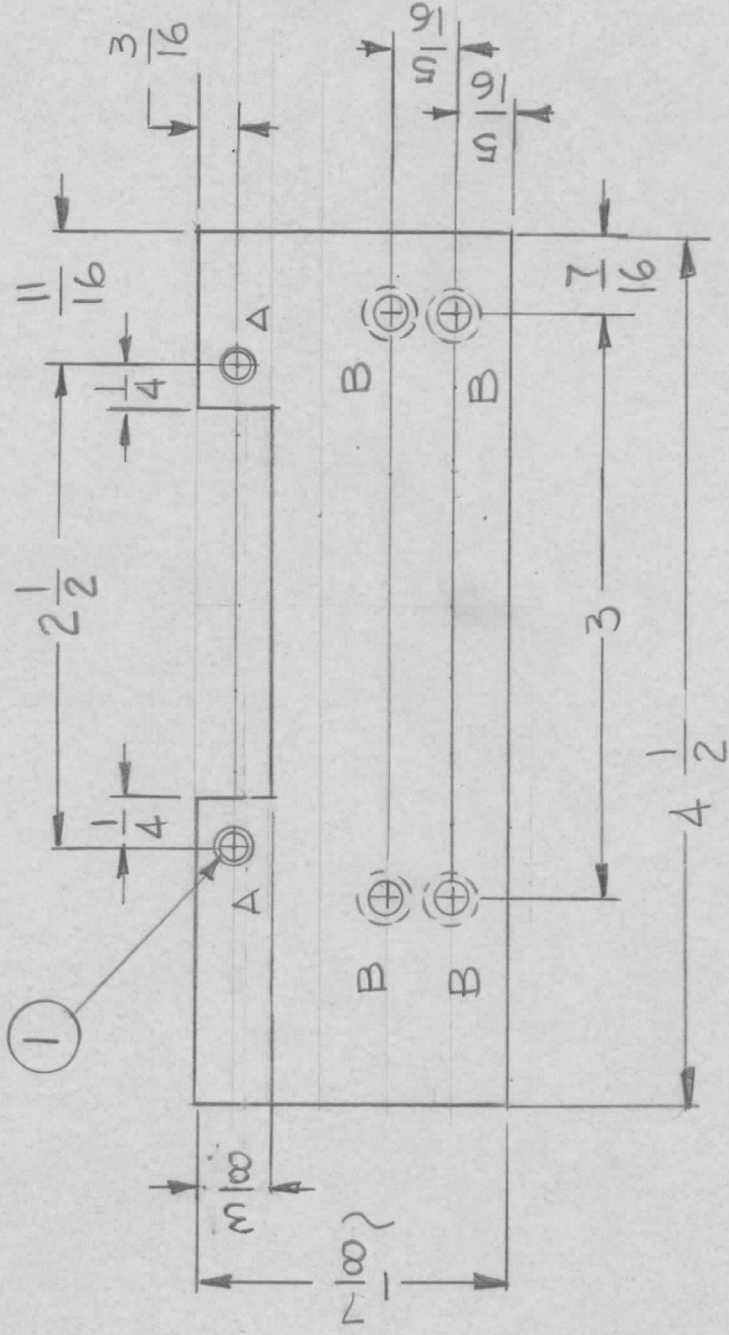


APPLICATION REVISIONS

QTY	MODEL USED ON	ASS'Y NO.	LTR	DESCRIPTION	DATE	E.M.N.NO	DRAFT	CHKD	APPD
1	HFLM-10K/1			ORIGINAL RELEASE	1-10-77				*



HOLES

A-.161-.164 DIA 2REQ

B-.144 DIA C'SHK 82° TO .284 DIA 4REQ

2	1	NT129-0440-4	NUT_ROUND		A
REQ'D	ITEM	PART NUMBER	DESCRIPTION	SYM.	

LIST OF MATERIAL	
THE TECHNICAL MATERIEL CORP. MAMARONECK, NEW YORK	
PLATE, MTG. TERM. STRIP	
FINAL APPROVAL <i>gob</i>	DATE 7/10/77
MECH. DES.	DATE
ELECT. DES.	DATE
CHECKED	DATE
DRAWN G.D.L	DATE 3-24-76

NOTICE TO PERSONS RECEIVING THIS DRAWING	
THE TECHNICAL MATERIEL CORPORATION claims proprietary right in the material disclosed hereon. This drawing is issued in confidence for engineering information only and may not be reproduced or used to manufacture anything shown hereon without permission from THE TECHNICAL MATERIEL CORPORATION to the user. This drawing is loaned for mutual assistance and is subject to recall at any time.	
SIZE A	CODE IDENT. NO. MS 6701
SCALE 1:1	DWG NO. MS 6701
SHEET	OF
ISSUE	

APPLICATION

REVISIONS

QTY	MODEL USED ON	ASS'Y NO.	LTR	DESCRIPTION	DATE	E.M.N.NO	DRAFT	CHKD	APPD
	HFLM-10K/1		Ø	ORIGINAL RELEASE	1/10/77				*

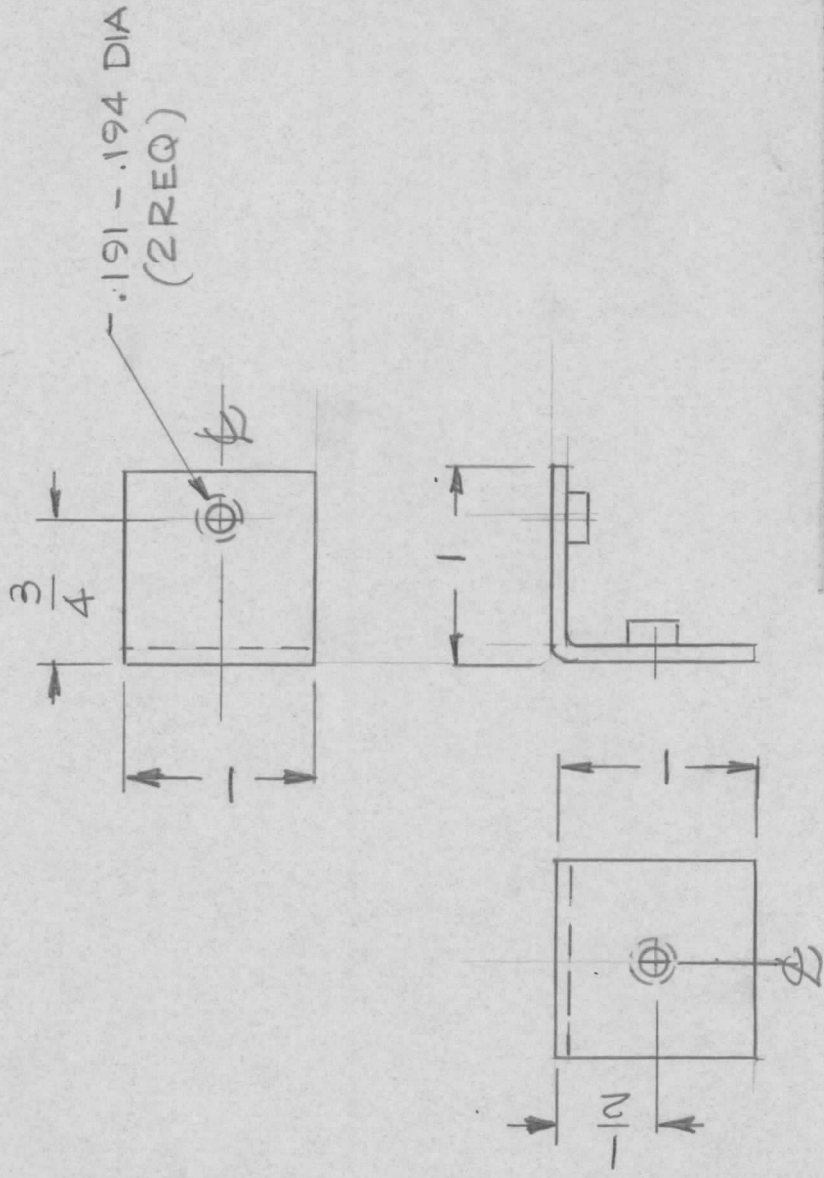
FOR SHEET 1, 2, 3, 4 & 6
SEE MS 5530 SHEET 1, 2, 3, 4 & 6

UNLESS OTHERWISE SPECIFIED DIMENSIONS ARE IN INCHES AND INCLUDE CHEMICALLY APPLIED OR PLATED FINISHES		REQ'D ITEM	PART NUMBER	DESCRIPTION	SYM.
DECIMALS	FRACTIONS	LIST OF MATERIAL			
.X ± .05	1/64	FINAL APPROVAL	DATE	THE TECHNICAL MATERIEL CORP. MAMARONECK, NEW YORK	
.XX ± .01	TOLS.	MECH. DES.	DATE		
.XXX ± .005	ANGLES	ELECT. DES.	DATE		
	0° - 30°	CHECKED	DATE		
		DRAWN	DATE		
MATERIAL				FRAME 10K TOP HFLM-10K/1	
FINISH					
NOTICE TO PERSONS RECEIVING THIS DRAWING THE TECHNICAL MATERIEL CORPORATION claims proprietary right in the material disclosed hereon. This drawing is issued in confidence for engineering information only and may not be reproduced or used to manufacture anything shown hereon without permission from THE TECHNICAL MATERIEL CORPORATION to the user. This drawing is loaned for mutual assistance and is subject to recall at any time.		SIZE A	CODE IDENT. NO. 82679	DWG NO. MS6704	ISSUE Ø
		SCALE	SHEET	OF	6

APPLICATION

REVISIONS

QTY	MODEL USED ON	ASS'Y NO.	LTR	DESCRIPTION	DATE	E.M.N.NO	DRAFT	CHKD	APPD
1	HFL-100		Ø	ORIGINAL RELEASE FOR PROD	8/76		CL	<i>[Signature]</i>	<i>[Signature]</i>



UNLESS OTHERWISE SPECIFIED:

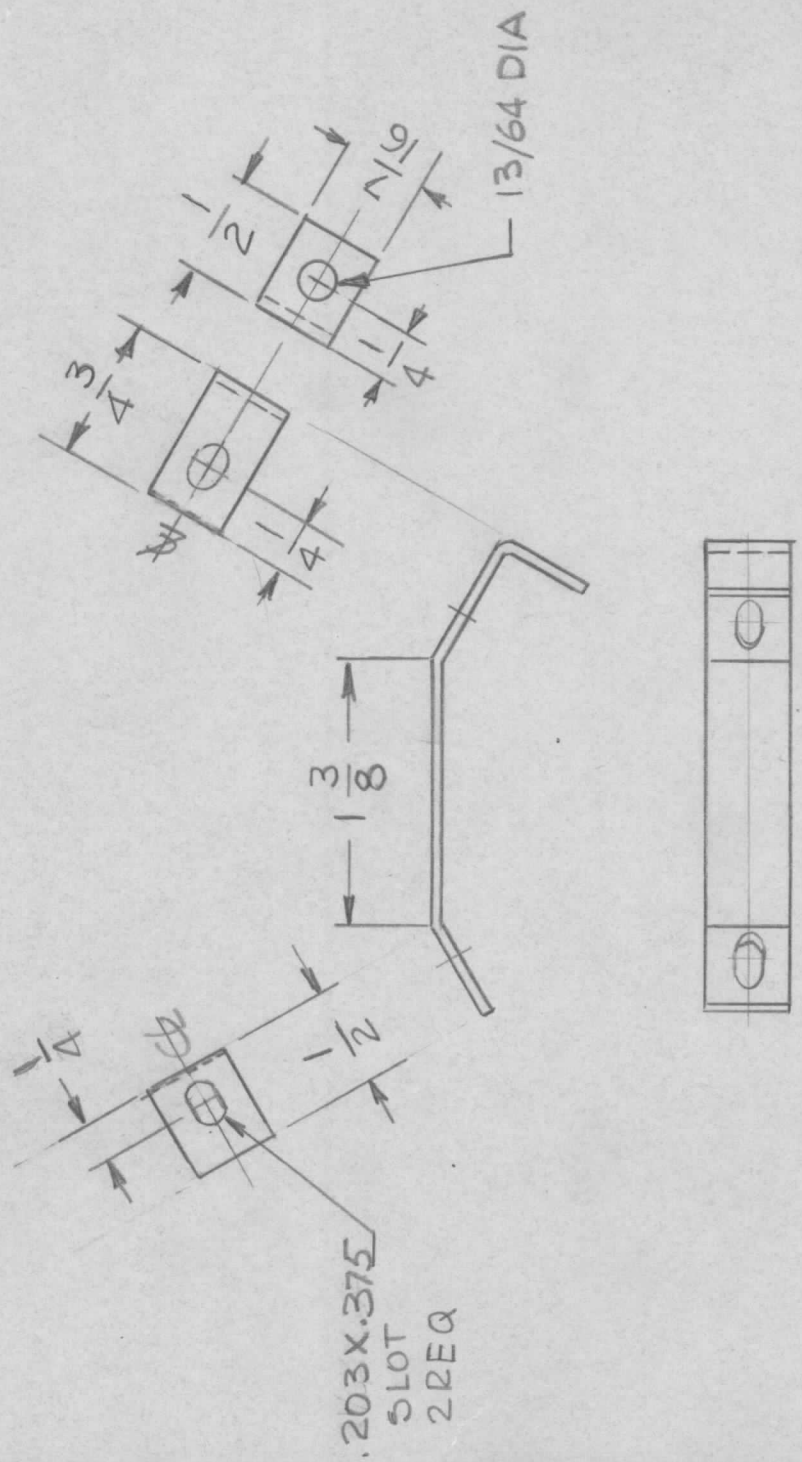
1. USE MATERIAL THICKNESS FOR MAXIMUM RADIUS ON ALL BENDS.
2. ALL ANGULAR BENDS 90 DEGREES.
3. REMOVE ALL BURRS AND SHARP EDGES.

UNLESS OTHERWISE SPECIFIED DIMENSIONS ARE IN INCHES AND INCLUDE CHEMICALLY APPLIED OR PLATED FINISHES		REQ'D ITEM	PART NUMBER	DESCRIPTION	SYM.
DECIMALS	FRACTIONS	LIST OF MATERIAL			
.X ± .05	1/64	FINAL APPROVAL	DATE	THE TECHNICAL MATERIEL CORP.	
.XX ± .01	TOLS.	<i>[Signature]</i>	8-12-76	MAMARONECK, NEW YORK	
.XXX ± .005	ANGLES	MECH. DES.	DATE	BRACKET, HOLDING SHIELD	
	0° - 30°	ELECT. DES.	DATE	SIZE	CODE IDENT. NO.
MATERIAL 064 THK		CHECKED	DATE	A	82679
ALY 5052 H32		DRAWN	DATE	SCALE	DWG NO.
FINISH S404		G.D.L	3-22-76	1:1	MS 6707
YEL IRIDITE				SHEET	OF
NOTICE TO PERSONS RECEIVING THIS DRAWING				ISSUE	Ø
THE TECHNICAL MATERIEL CORPORATION claims proprietary right in the material disclosed hereon. This drawing is issued in confidence for engineering information only and may not be reproduced or used to manufacture anything shown hereon without permission from THE TECHNICAL MATERIEL CORPORATION to the user. This drawing is loaned for mutual assistance and is subject to recall at any time.					

APPLICATION

REVISIONS

QTY	MODEL USED ON	ASSY NO.	LTR	DESCRIPTION	DATE	E.M.N.NO	DRAFT	CHKD	APPD
2	TLAA-1K	CL463	Ø	ORIGINAL RELEASE FOR PROD	8/76	-	CL	MB	*



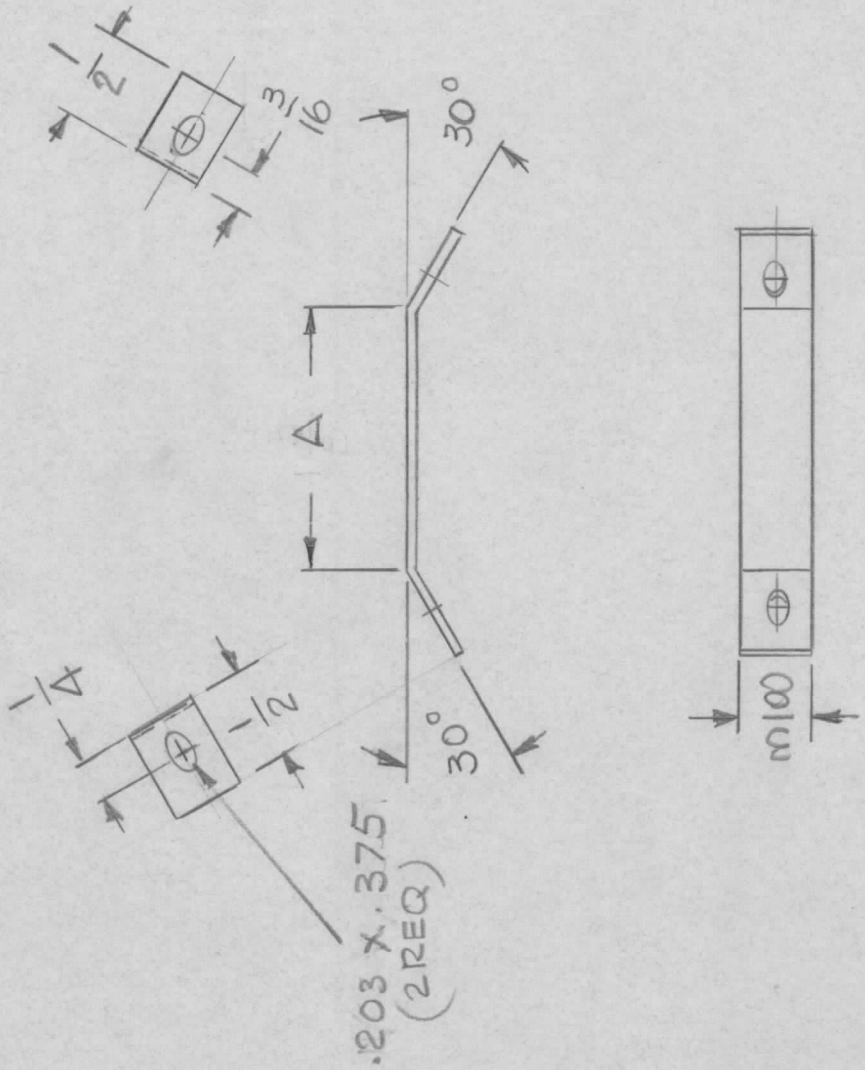
UNLESS OTHERWISE SPECIFIED DIMENSIONS ARE IN INCHES AND INCLUDE CHEMICALLY APPLIED OR PLATED FINISHES	REQ'D ITEM	PART NUMBER	DESCRIPTION	SYM.
	LIST OF MATERIAL			
DECIMALS .X ± .05 .XX ± .01 .XXX ± .005	FINAL APPROVAL *	DATE 8-12-76	THE TECHNICAL MATERIEL CORP. MAMARONECK, NEW YORK BRACKET, MTG COIL	ISSUE Ø
FRACTIONS 1/64 ANGLES 0°-30°	MECH. DES.	DATE		
MATERIAL .063 THK ALY 5052-H32	ELECT. DES.	DATE		
FINISH S404	CHECKED	DATE		
VEL IRIDITE	DRAWN G.D.L	DATE 4-23-76		
NOTICE TO PERSONS RECEIVING THIS DRAWING THE TECHNICAL MATERIEL CORPORATION claims proprietary right in the material disclosed hereon. This drawing is issued in confidence for engineering information only and may not be reproduced or used to manufacture anything shown hereon without permission from THE TECHNICAL MATERIEL CORPORATION to the user. This drawing is loaned for mutual assistance and is subject to recall at any time.		SIZE A	CODE IDENT. NO. 82679	DWG NO. MS6708
		SCALE 1:1	SHEET	OF

APPLICATION

REVISIONS

QTY	MODEL USED ON	ASS'Y NO.	LTR	DESCRIPTION	DATE	E.M.N.NO	DRAFT	CHKD	APPD
4	TAAA-1K	CL463	Ø	ORIGINAL RELEASE FOR PROD	8/76		CL	<i>gfb</i>	*

TMC P/NO	DIMENSION "A"	REQ.
MS6709	1-3/8	2
MS6709-2	1-1/2	2



UNLESS OTHERWISE SPECIFIED DIMENSIONS ARE IN INCHES AND INCLUDE CHEMICALLY APPLIED OR PLATED FINISHES	REQ'D ITEM	PART NUMBER	DESCRIPTION	SYM.
DECIMALS .X ± .05 .XX ± .01 .XXX ± .005			LIST OF MATERIAL	
FRACTIONS 1/64				
TOLS. ANGLES ° - 30'			THE TECHNICAL MATERIEL CORP. MAMARONECK, NEW YORK	
MATERIAL .063 THK AL. 5052-H32			PLATE, SPACER HOLDER	
FINISH S404				
YEL IRIDITE				

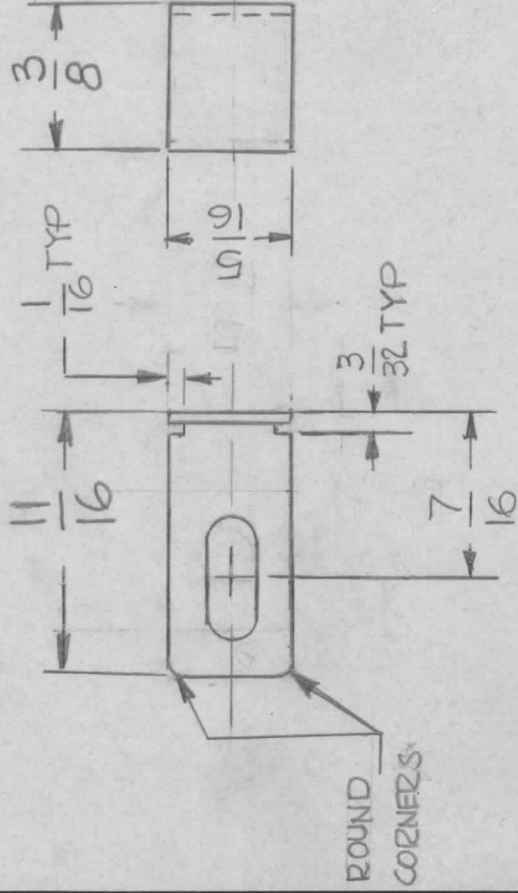
FINAL APPROVAL	DATE
<i>[Signature]</i>	8/276
MECH. DES.	DATE
ELECT. DES.	DATE
CHECKED	DATE
DRAWN G.DeLUCIA	DATE 4-23-76

NOTICE TO PERSONS RECEIVING THIS DRAWING		SIZE	CODE IDENT. NO.	DWG NO.	ISSUE
THE TECHNICAL MATERIEL CORPORATION claims proprietary right in the material disclosed hereon. This drawing is issued in confidence for engineering information only and may not be reproduced or used to manufacture anything shown hereon without permission from THE TECHNICAL MATERIEL CORPORATION to the user. This drawing is loaned for mutual assistance and is subject to recall at any time.		A	82679	MS6709	Ø
SCALE 1:1	SHEET	OF			

APPLICATION

REVISIONS

QTY	MODEL USED ON	ASSY NO.	LTR	DESCRIPTION	DATE	E.M.N.NO	DRAFT	CHKD	APPD
3	HFTA-10K		Ø	ORIGINAL RELEASE	1-10-77				*
3	KIT 407								



UNLESS OTHERWISE SPECIFIED DIMENSIONS ARE IN INCHES AND INCLUDE CHEMICALLY APPLIED OR PLATED FINISHES	REQ'D	ITEM	PART NUMBER	DESCRIPTION	SYM.
DECIMALS				LIST OF MATERIAL	
FRACTIONS					
.X ± .05 TOLS.	FINAL APPROVAL	* ØØØ		THE TECHNICAL MATERIEL CORP.	
.XX ± .01 ANGLES	MECH. DES.			MAMARONECK, NEW YORK	
.XXX ± .005 0°-30°	ELECT. DES.				
MATERIAL .032 COPPER	CHECKED			CLAMP, CAPACITOR	
FINISH	DRAWN	G.D.L			
NOTICE TO PERSONS RECEIVING THIS DRAWING	DATE	1/18/77			
THE TECHNICAL MATERIEL CORPORATION claims proprietary right in the material disclosed hereon. This drawing is issued in confidence for engineering information only and may not be reproduced or used to manufacture anything shown hereon without permission from THE TECHNICAL MATERIEL CORPORATION to the user. This drawing is loaned for mutual assistance and is subject to recall at any time.	DATE				
	DATE				
	DATE				
	DATE	5-12-76			
SIZE	CODE IDENT. NO.	DWG NO.	ISSUE		
A	82679	MS6711	Ø		
SCALE	2:1	SHEET	OF		

APPLICATION

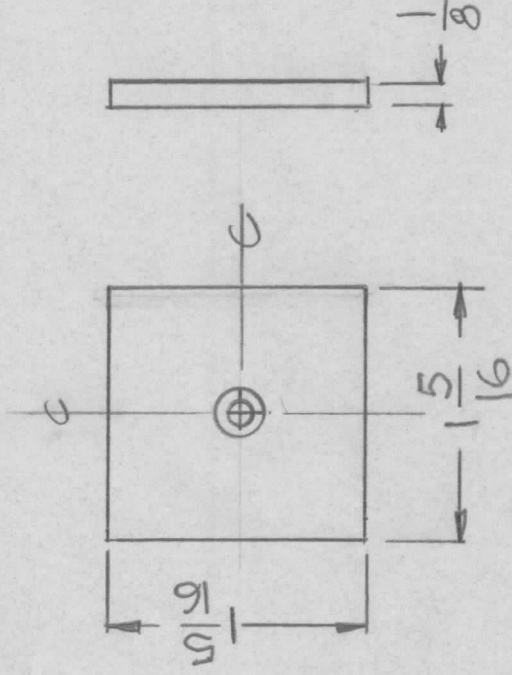
QTY MODEL USED ON ASS'Y NO. LTR DESCRIPTION DATE E.M.N.NO DRAFT CHKD APPD

1 HFTM-40KJ MS6716-1 ORIGINAL RELEASE 1-10-77

REVISIONS

DATE E.M.N.NO DRAFT CHKD APPD

1-10-77 *



UNLESS OTHERWISE SPECIFIED DIMENSIONS ARE IN INCHES AND INCLUDE CHEMICALLY APPLIED OR PLATED FINISHES

DECIMALS FRACTIONS
 .X ± .05 TOLS. 1/64
 .XX ± .01 ANGLES
 .XXX ± .005 0° - 30'

MATERIAL 1/8THK
 ALY 5052-H32

FINISH S404

YEL IRIDITE

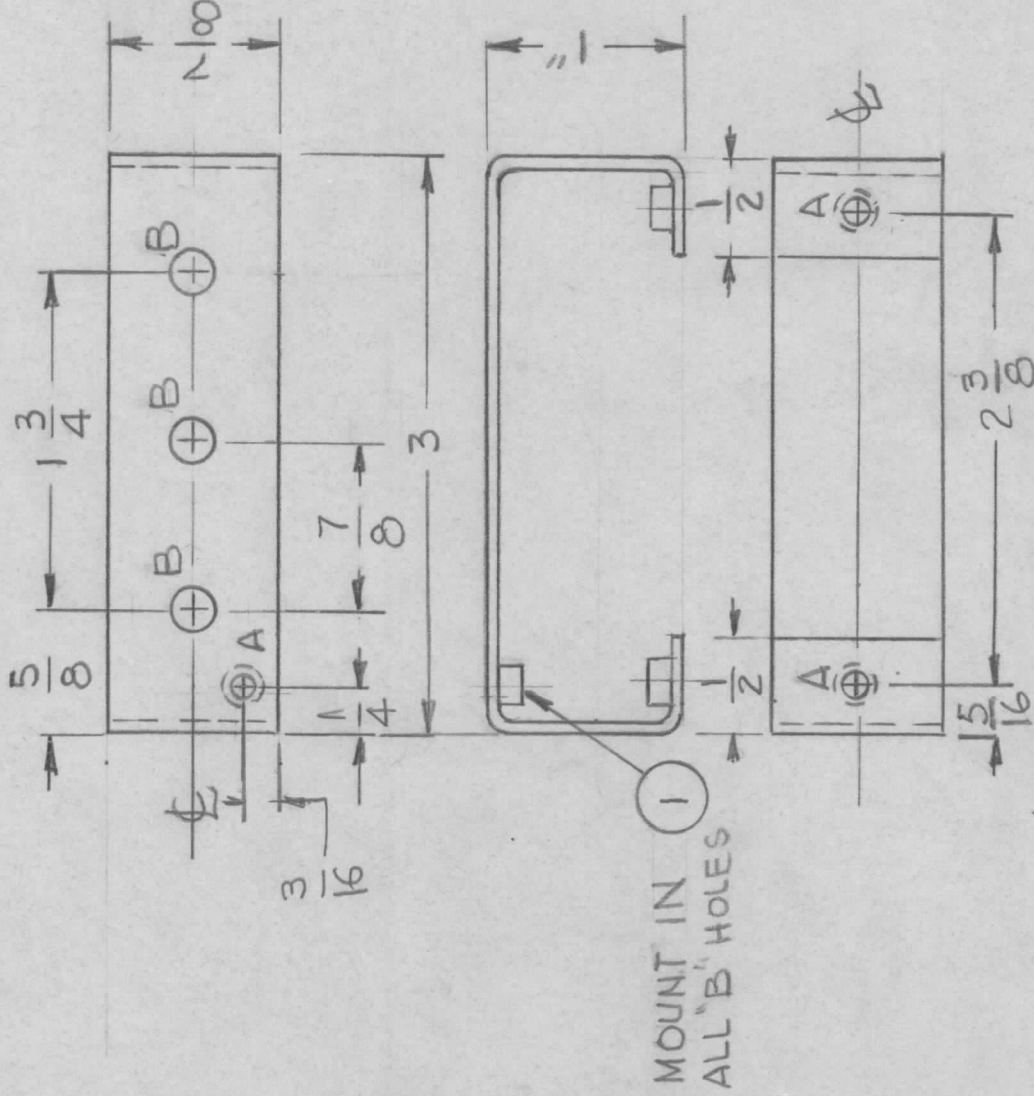
NOTICE TO PERSONS RECEIVING THIS DRAWING
 THE TECHNICAL MATERIEL CORPORATION claims proprietary right in the material disclosed hereon. This drawing is issued in confidence for engineering information only and may not be reproduced or used to manufacture anything shown hereon without permission from THE TECHNICAL MATERIEL CORPORATION to the user. This drawing is loaned for mutual assistance and is subject to recall at any time.

REQ'D	ITEM	PART NUMBER	DESCRIPTION	SYM.
LIST OF MATERIAL				
FINAL APPROVAL	DATE	THE TECHNICAL MATERIEL CORP. MAMARONECK, NEW YORK		
MECH. DES.	DATE	PLATE, TRIM MTG		
ELECT. DES.	DATE	SIZE	CODE IDENT. NO.	DWG NO.
CHECKED	DATE	A	82679	MS6717
DRAWN	DATE	SCALE	1 : 1	SHEET OF
G.D.L	5-27-76			
<p>ISSUE</p>				

APPLICATION

REVISIONS

QTY	MODEL USED ON	ASS'Y NO.	LTR	DESCRIPTION	DATE	E.M.N.NO	DRAFT	CHKD	APPD
1	HFL-100 A	BMA527	Ø	ORIGINAL RELEASE FOR PROD	7/21/76		CL		*



REQ'D ITEM	PART NUMBER	DESCRIPTION	SYM.
3 1	NT1290440-4	NUT, ROUND SWAGE	B

LIST OF MATERIAL

FINAL APPROVAL	DATE
MECH. DES.	DATE
ELECT. DES.	DATE
CHECKED	DATE
DRAWN	DATE

THE TECHNICAL MATERIEL CORP.
MAMARONECK, NEW YORK

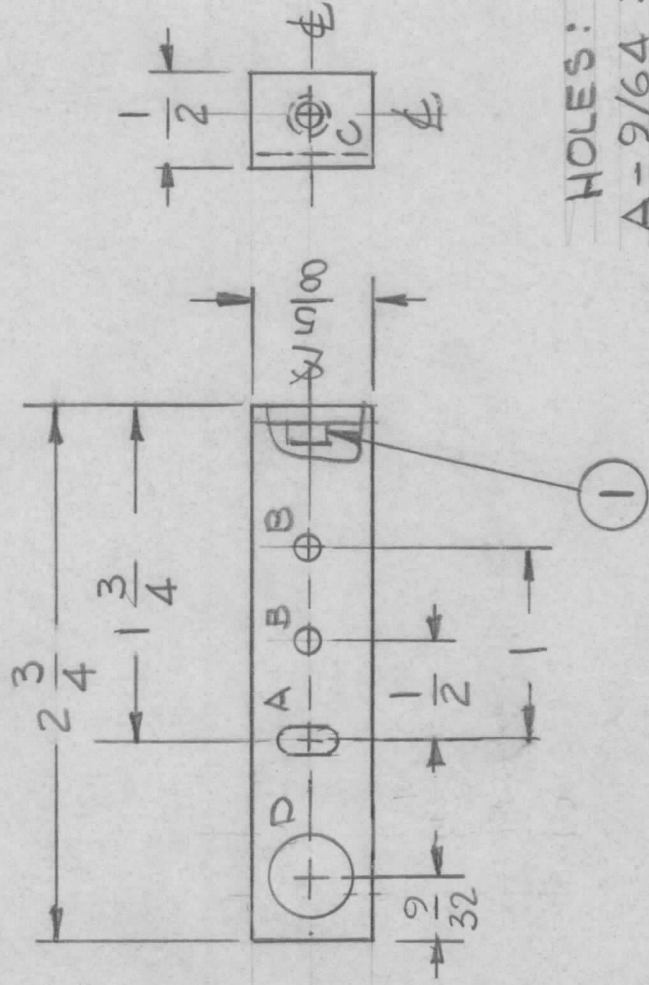
BRACKET, MTG COILS

SIZE	CODE IDENT. NO.	DWG NO.	ISSUE
A	82679	MS 6718	Ø
SCALE	1:1	SHEET	OF

NOTICE TO PERSONS RECEIVING THIS DRAWING
THE TECHNICAL MATERIEL CORPORATION claims proprietary right in the material disclosed hereon. This drawing is issued in confidence for engineering information only and may not be reproduced or used to manufacture anything shown hereon without permission from THE TECHNICAL MATERIEL CORPORATION to the user. This drawing is loaned for mutual assistance and is subject to recall at any time.

APPLICATION REVISIONS

QTY	MODEL USED ON	ASS'Y NO.	LTR	DESCRIPTION	DATE	E.M.N.NO	DRAFT	CHKD	APPD
2	HFL-100-A	BMA527	Ø	ORIGINAL RELEASE FOR PROD	7/19/76	-	Q	MSB	APPD *



HOLES:
 A - 9/64 X 9/32 SLOT 1REQ
 B - 9/64 DIA 2REQ
 C - .161-.164 DIA 1REQ
 D - 7/16 DIA

1	1	NT129.04404	NUT, ROUND	C
REQ'D ITEM	PART NUMBER	DESCRIPTION	SYM.	

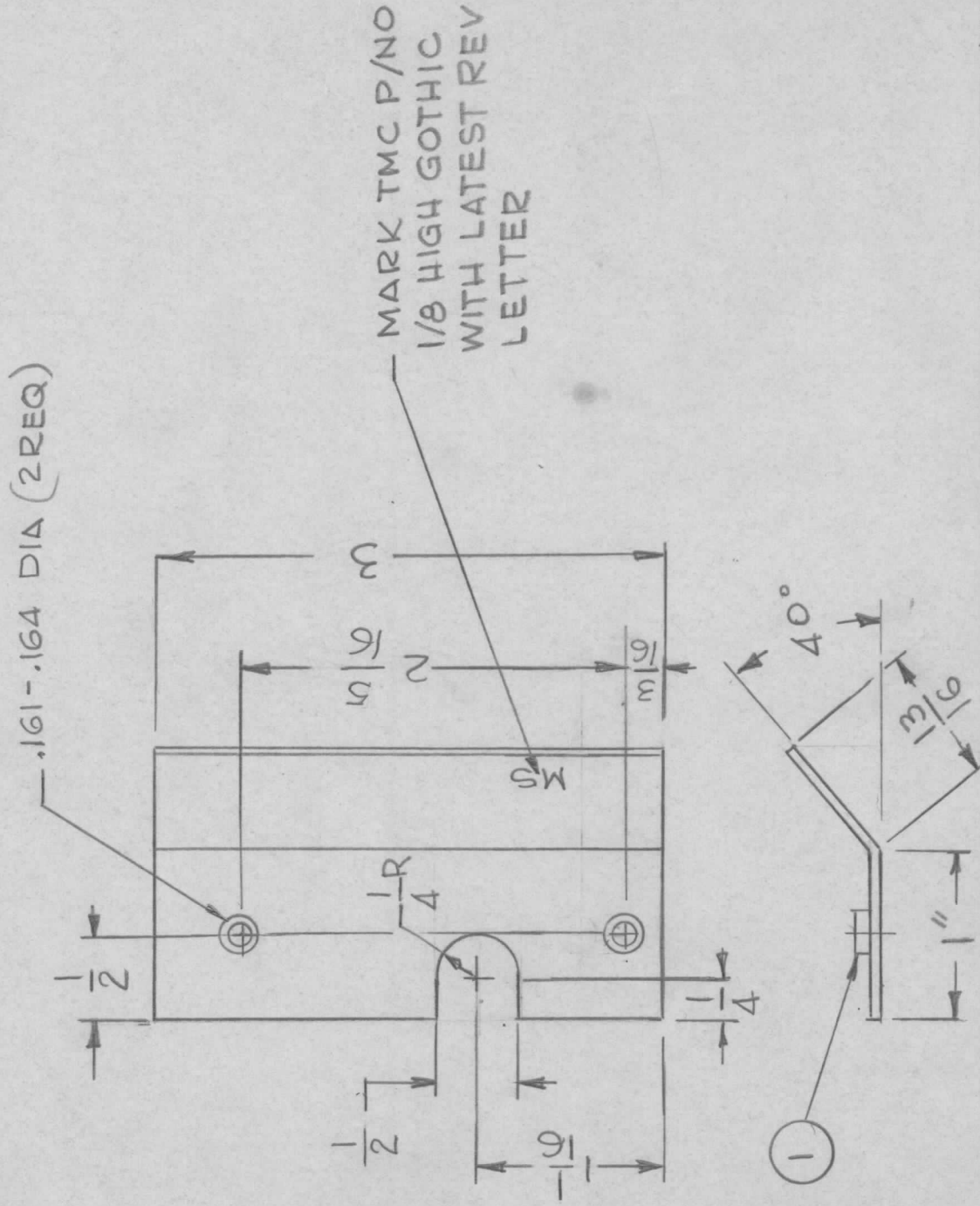
UNLESS OTHERWISE SPECIFIED DIMENSIONS ARE IN INCHES AND INCLUDE CHEMICALLY APPLIED OR PLATED FINISHES		LIST OF MATERIAL	
DECIMALS	FRACTIONS	THE TECHNICAL MATERIEL CORP. MAMARONECK, NEW YORK	
.X ± .05	1/64	BRACKET MTG	
.XX ± .01	TOLS.	TUBE SOCKET	
.XXX ± .005	ANGLES	CODE IDENT. NO. DWG NO.	
	0° - 30°	A	82679
MATERIAL .081THK		SIZE	MS 6719
ALY 5052-H32		SCALE	1:1
FINISH 5404		ISSUE	Ø
YEL IRIDITE			

NOTICE TO PERSONS RECEIVING THIS DRAWING
 THE TECHNICAL MATERIEL CORPORATION claims proprietary right in the material disclosed hereon. This drawing is issued in confidence for engineering information only and may not be reproduced or used to manufacture anything shown hereon without permission from THE TECHNICAL MATERIEL CORPORATION to the user. This drawing is loaned for mutual assistance and is subject to recall at any time.

APPLICATION

REVISIONS

QTY	MODEL USED ON	ASS'Y NO.	LTR	DESCRIPTION	DATE	E.M.N.NO	DRAFT	CHKD	APPD
1	HFL-100 A	BMA527	Ø	ORIGINAL RELEASE FOR PROD	7/9/76	x	Q.	8/B	*



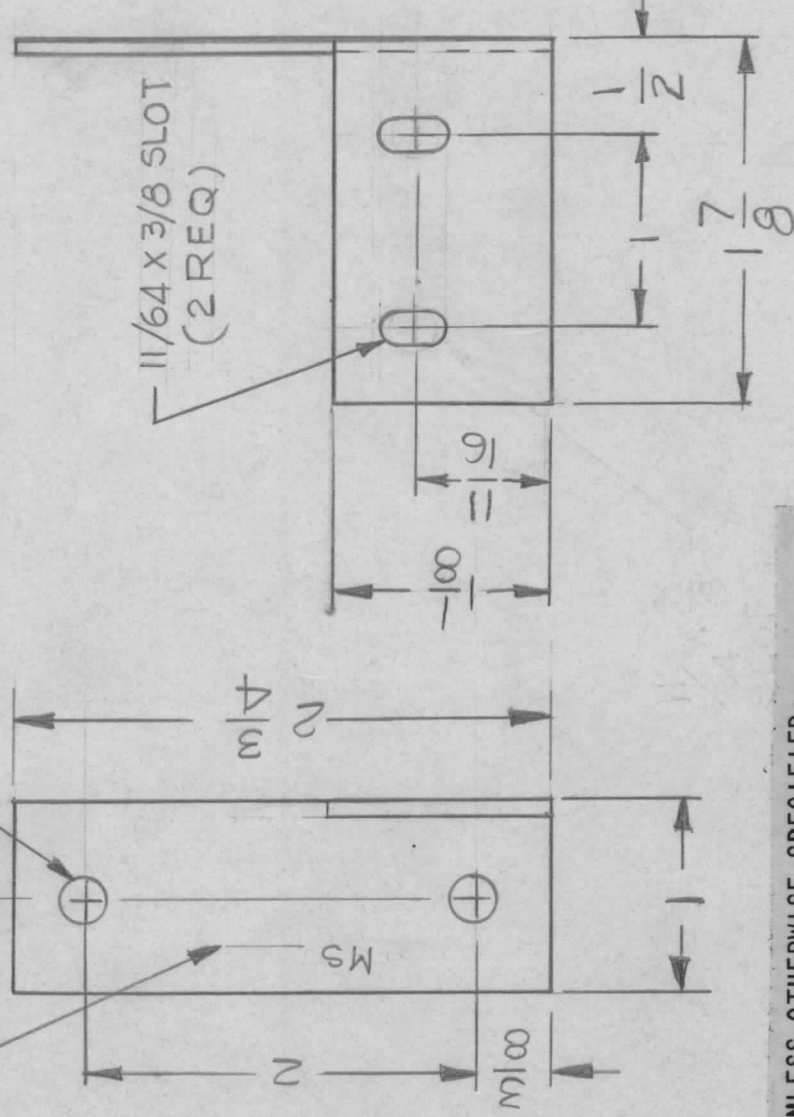
UNLESS OTHERWISE SPECIFIED DIMENSIONS ARE IN INCHES AND INCLUDE CHEMICALLY APPLIED OR PLATED FINISHES		REQ'D ITEM	PART NUMBER	DESCRIPTION	SYM.		
DECIMALS	FRACTIONS	2	1	NT129-0440-4	NUT, ROUND		
.X ± .05	1/64	LIST OF MATERIAL					
.XX ± .01	TOLS.						
.XXX ± .005	ANGLES						
MATERIAL .051THK ALY 5052-H32		FINAL APPROVAL	DATE	THE TECHNICAL MATERIEL CORP.			
FINISH S404		MECH. DES.	DATE	MAMARONECK, NEW YORK			
YEL IRIDITE		ELECT. DES.	DATE	PLATE, AIR FLOW			
		CHECKED	DATE	SIZE	CODE IDENT. NO.	DWG NO.	ISSUE
		DRAWN	DATE	A	82679	MS6724	Ø
		G.D.L	DATE	SCALE	1:1	SHEET	OF

NOTICE TO PERSONS RECEIVING THIS DRAWING
 THE TECHNICAL MATERIEL CORPORATION claims proprietary right in the material disclosed hereon. This drawing is issued in confidence for engineering information only and may not be reproduced or used to manufacture anything shown hereon without permission from THE TECHNICAL MATERIEL CORPORATION to the user. This drawing is loaned for mutual assistance and is subject to recall at any time.

APPLICATION		REVISIONS							
QTY	MODEL USED ON	ASS'Y NO.	LTR	DESCRIPTION	DATE	E.M.N.NO	DRAFT	CHKD	APPD
11	HFLA-10K		Ø	ORIGINAL RELEASE FOR PROD	8/76		CL		

MARK TMC PART NUMBER
1/8 HIGH GOTHIC WITH LATEST
REVISION LETTER

15
64 DIA
2 REQ



UNLESS OTHERWISE SPECIFIED:

1. USE MATERIAL THICKNESS FOR MAXIMUM RADIUS ON ALL BENDS.
2. ALL ANGULAR BENDS 90 DEGREES.
3. REMOVE ALL BURRS AND SHARP EDGES.

REQ'D ITEM	PART NUMBER	DESCRIPTION	SYM.
LIST OF MATERIAL			
THE TECHNICAL MATERIEL CORP. MAMARONECK, NEW YORK			
FINAL APPROVAL	DATE	BRACKET, MTG SW	
MECH. DES.	DATE		
ELECT. DES.	DATE		
CHECKED	DATE		
DRAWN	DATE		
	G.D.L	8-12-76	8-12-76

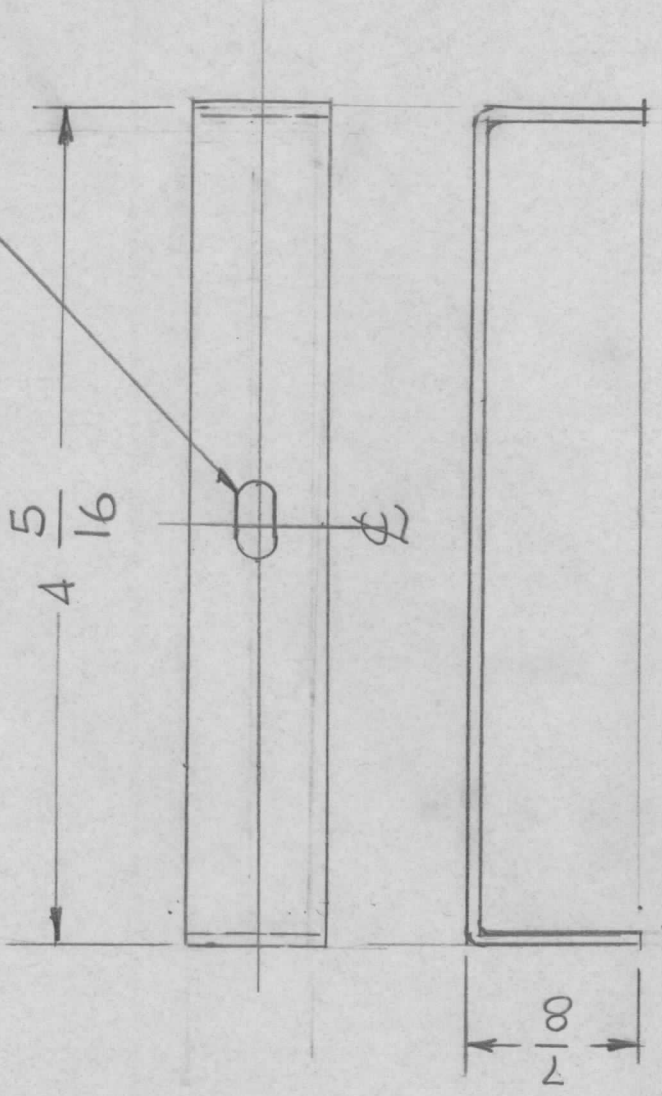
SIZE	CODE IDENT. NO.	DWG NO.	ISSUE
A	82679	MS 6729	Ø
SCALE	SHEET	OF	

NOTICE TO PERSONS RECEIVING THIS DRAWING
THE TECHNICAL MATERIEL CORPORATION claims proprietary right in the material disclosed hereon. This drawing is issued in confidence for engineering information only and may not be reproduced or used to manufacture anything shown hereon without permission from THE TECHNICAL MATERIEL CORPORATION to the user. This drawing is loaned for mutual assistance and is subject to recall at any time.

APPLICATION REVISIONS

QTY	MODEL USED ON	ASS'Y NO.	LTR	DESCRIPTION	DATE	E.M.N.NO	DRAFT	CHKD	APPD
4	AX5220								
4	AX5221								

3/16 x 3/8 SLOT



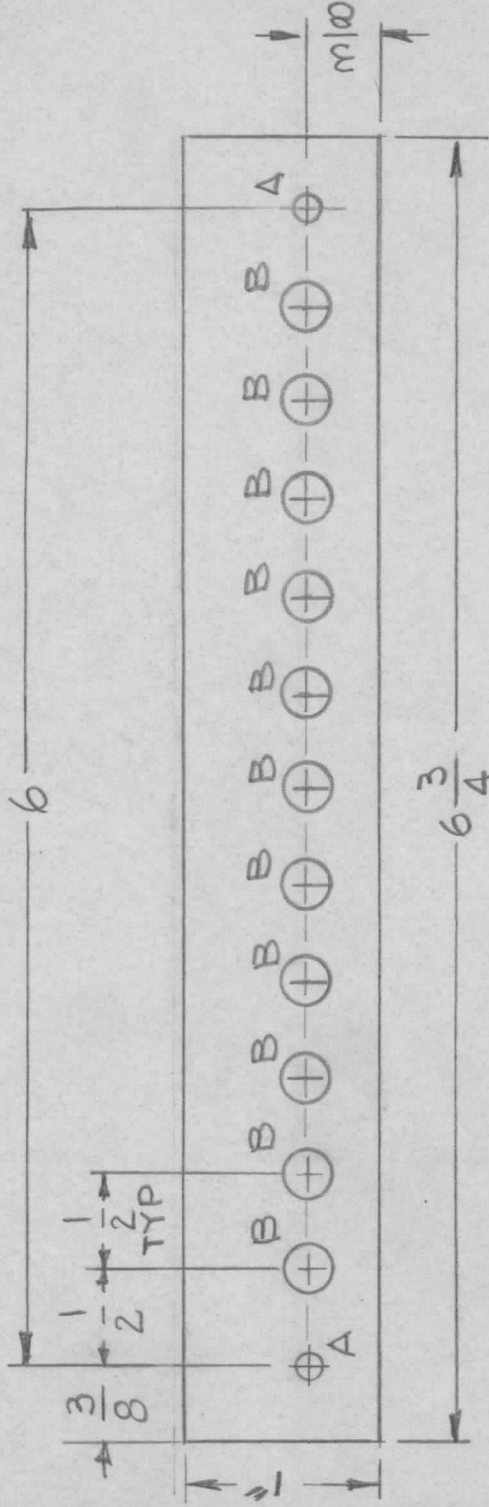
REQ'D	ITEM	PART NUMBER	DESCRIPTION	SYM.
LIST OF MATERIAL				
THE TECHNICAL MATERIEL CORP. MAMARONECK, NEW YORK BRACKET, RETAINED				
UNLESS OTHERWISE SPECIFIED DIMENSIONS ARE IN INCHES AND INCLUDE CHEMICALLY APPLIED OR PLATED FINISHES		FINAL APPROVAL	DATE	ISSUE
DECIMALS ± .05 TOLS. 1/64 ANGLES 0°-30' .XX ± .01 .XXX ± .005		MECH. DES.	DATE	SIZE
MATERIAL .063THK ALY. 5052-H32		ELECT. DES.	DATE	A
FINISH S404		CHECKED	DATE	CODE IDENT. NO.
YEL. IRIDITE		DRAWN G.D.L.	DATE 4-3-77	82679
NOTICE TO PERSONS RECEIVING THIS DRAWING THE TECHNICAL MATERIEL CORPORATION claims proprietary right in the material disclosed hereon. This drawing is issued in confidence for engineering information only and may not be reproduced or used to manufacture anything shown hereon without permission from THE TECHNICAL MATERIEL CORPORATION to the user. This drawing is loaned for mutual assistance and is subject to recall at any time.				
SCALE 1:1			SHEET	OF
			MS 6736	ISSUE

APPLICATION REVISIONS

QTY	MODEL USED ON	ASS'Y NO.	LTR	DESCRIPTION	DATE	E.M.N.NO	DRAFT	CHKD	APPD
-----	---------------	-----------	-----	-------------	------	----------	-------	------	------

1 TMA-1K

Bobino



HOLES:

- A - 3/16 DIA 2REQ
- B - 11/32 DIA 11REQ

REF: LD 3055

FINISH NOTES:

1. S404 - IRIDITE 14-2 AL-COAT.
 2. S114 - ZINC CHROMATE PRIMER } FRONT AND EDGES ONLY
 3. S115 - SMOOTH GRAY ENAMEL } OR
- PRIME AND PAINT PER CUSTOMER'S SPECIFICATIONS

UNLESS OTHERWISE SPECIFIED DIMENSIONS ARE IN INCHES AND INCLUDE CHEMICALLY APPLIED OR PLATED FINISHES		REQ'D	ITEM	PART NUMBER	DESCRIPTION	SYM.
LIST OF MATERIAL						
THE TECHNICAL MATERIEL CORP. MAMARONECK, NEW YORK						
PLATE, FRONT PANEL ADPT						
DECIMALS	FRACTIONS					
.X ± .05	1/64	FINAL APPROVAL	DATE			
.XX ± .01	ANGLES	MECH. DES.	DATE			
.XXX ± .005	0° - 30°	ELECT. DES.	DATE			
MATERIAL .051 THK			CHECKED			
ALUM 5052-H32			DRAWN			
FINISH SEE NOTE						
			DATE			
			9-29-76			

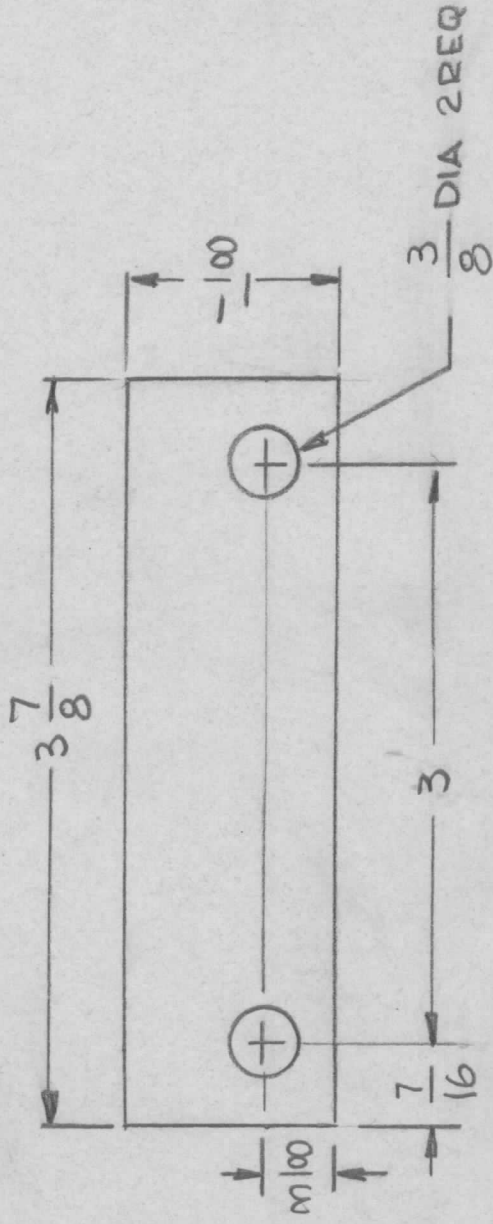
SIZE	CODE IDENT. NO.	DWG NO.	ISSUE
A	82679	MS 6737	X
SCALE 1:1	SHEET	OF	

NOTICE TO PERSONS RECEIVING THIS DRAWING
 THE TECHNICAL MATERIEL CORPORATION claims proprietary right in the material disclosed hereon. This drawing is issued in confidence for engineering information only and may not be reproduced or used to manufacture anything shown hereon without permission from THE TECHNICAL MATERIEL CORPORATION to the user. This drawing is loaned for mutual assistance and is subject to recall at any time.

REVISIONS

APPLICATION

QTY	MODEL USED ON	ASS'Y NO.	LTR	DESCRIPTION	DATE	E.M.N.NO	DRAFT	CHKD	APPD
1	AX5212	GPT-KC		ORIGINAL RELEASE FOR PRODUCTION					
				ORIGINAL RELEASE F-107 ~ GDL					*



FINISH NOTES:

- S404 - IRIDITE 14-2 AL-COAT.
 - S114 - ZINC CHROMATE PRIMER } FRONT AND EDGES ONLY
 - S115 - SMOOTH GRAY ENAMEL } OR
- PRIME AND PAINT PER CUSTOMER'S SPECIFICATIONS

REF: LD 3057

REQ'D ITEM	PART NUMBER	DESCRIPTION	SYM.
LIST OF MATERIAL			
THE TECHNICAL MATERIEL CORP. MAMARONECK, NEW YORK			
PLATE, FRONT PANEL ADAPTER			

FINAL APPROVAL	DATE
MECH. DES.	DATE
ELECT. DES.	DATE
CHECKED	DATE
DRAWN	DATE

MATERIAL 5051
ALUM 5052-1132
FINISH SEE NOTE

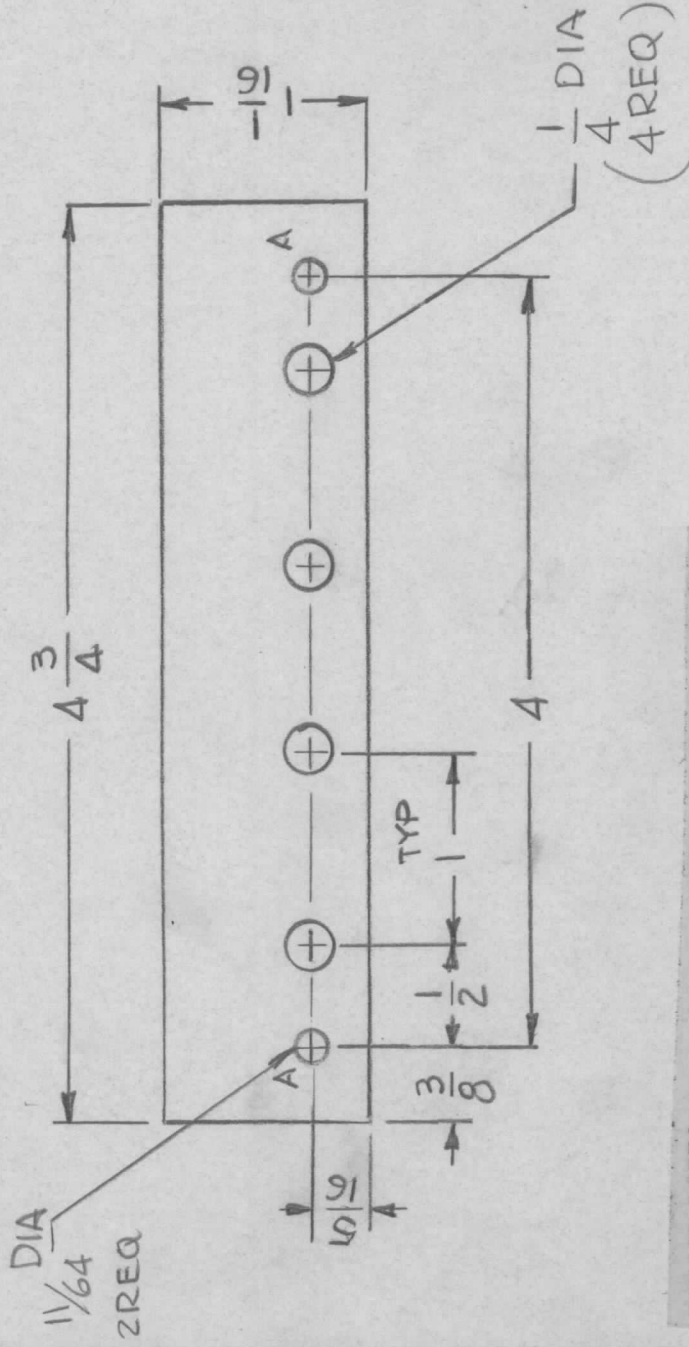
SIZE	CODE IDENT. NO.	DWG NO.	ISSUE
A	82679	MS 6742	
SCALE	1:1	SHEET	OF

NOTICE TO PERSONS RECEIVING THIS DRAWING
THE TECHNICAL MATERIEL CORPORATION claims proprietary right in the material disclosed hereon. This drawing is issued in confidence for engineering information only and may not be reproduced or used to manufacture anything shown hereon without permission from THE TECHNICAL MATERIEL CORPORATION to the user. This drawing is loaned for mutual assistance and is subject to recall at any time.

REVISIONS

APPLICATION

QTY	MODEL USED ON	ASS'Y NO.	LTR	DESCRIPTION	DATE	E.M.N.NO	DRAFT	CHKD	APPD
1	AX 5212	GPT-IKC		ORIGINAL RELEASE FOR PRODUCTION					
				Original Release	1-19-77		GDL		*



FINISH NOTES:

1. S404 - IRIDITE 14-2 AL-COAT.
 2. S114 - ZINC CHROMATE PRIMER } FRONT AND
 3. S115 - SMOOTH GRAY ENAMEL } EDGES ONLY
- OR
- PRIME AND PAINT PER CUSTOMER'S SPECIFICATIONS

REF: LD 3058

REQ'D ITEM	PART NUMBER	DESCRIPTION	SYM.
LIST OF MATERIAL			
THE TECHNICAL MATERIEL CORP. MAMARONECK, NEW YORK			
PLATE, FRONT PANEL ADAPTER			
FINAL APPROVAL	DATE		
MECH. DES.	DATE		
ELECT. DES.	DATE		
CHECKED	DATE		
DRAWN	DATE		
G.D.L.	9-30-76		

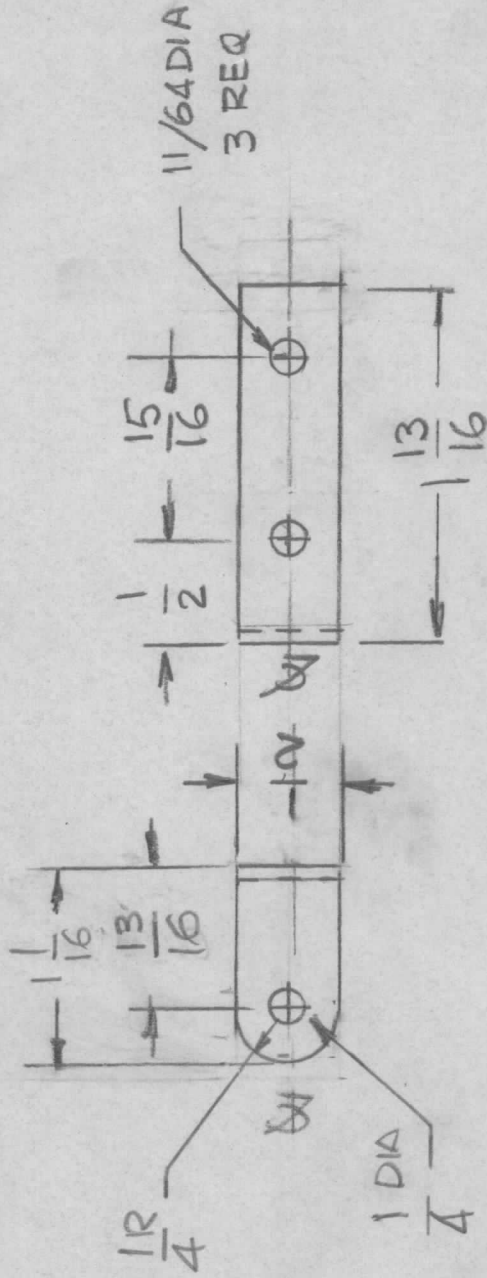
SIZE	CODE IDENT. NO.	DWG NO.	ISSUE
A	82679	MS 6743	0
SCALE	1:1	SHEET	OF

NOTICE TO PERSONS RECEIVING THIS DRAWING
 THE TECHNICAL MATERIEL CORPORATION claims proprietary right in the material disclosed hereon. This drawing is issued in confidence for engineering information only and may not be reproduced or used to manufacture anything shown hereon without permission from THE TECHNICAL MATERIEL CORPORATION to the user. This drawing is loaned for mutual assistance and is subject to recall at any time.

APPLICATION

REVISIONS

QTY	MODEL USED ON	ASSY NO.	LTR	DESCRIPTION	DATE	E.M.N.NO	DRAFT	CHKD	APPD
1	TMA-1KC		Ø	ORIGINAL RELEASE FOR PRODUCTION	6-13-77				



UNLESS OTHERWISE SPECIFIED DIMENSIONS ARE IN INCHES. AND INCLUDE CHEMICALLY APPLIED OR PLATED FINISHES	REQ'D ITEM	PART NUMBER	DESCRIPTION	SYM.
DECIMALS .X ± .05 .XX ± .01 .XXX ± .005	FINAL APPROVAL		LIST OF MATERIAL	
FRACTIONS 1/64	MECH. DES.			THE TECHNICAL MATERIEL CORP. MAMARONECK, NEW YORK
ANGLES 0°-30°	ELECT. DES.			BRACKET, MTG CAP
MATERIAL ALUM .064 THK 5052-H32	CHECKED			
FINISH S404	DRAWN			
YEL IRIDITE				

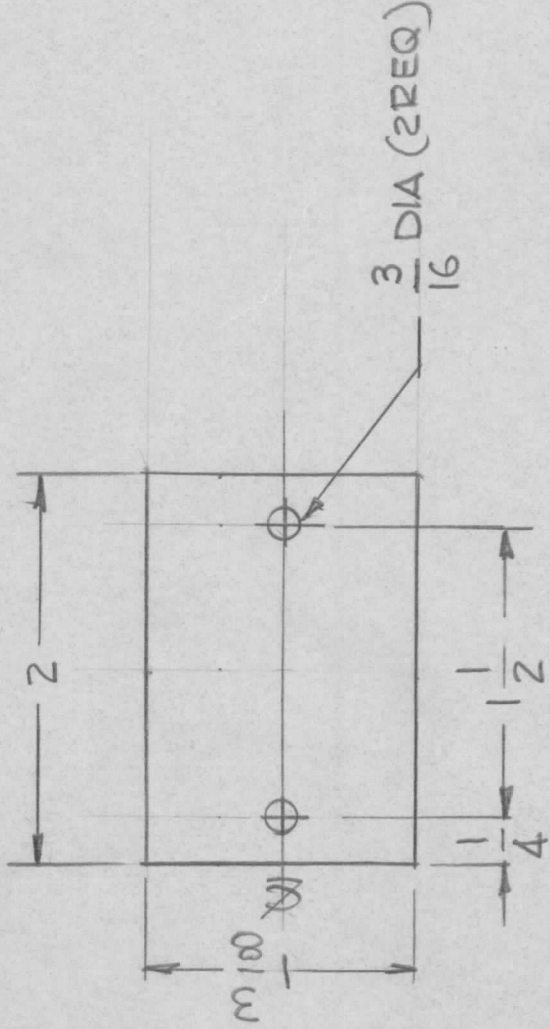
SIZE	CODE IDENT. NO.	DWG NO.	ISSUE
A	82679	MS 6745	Ø
SCALE 1:1	SHEET	OF	

NOTICE TO PERSONS RECEIVING THIS DRAWING
 THE TECHNICAL MATERIEL CORPORATION claims proprietary right in the material disclosed hereon. This drawing is issued in confidence for engineering information only and may not be reproduced or used to manufacture anything shown hereon without permission from THE TECHNICAL MATERIEL CORPORATION to the user. This drawing is loaned for mutual assistance and is subject to recall at any time.

APPLICATION

REVISIONS

QTY	MODEL USED ON	ASSY NO.	LTR	DESCRIPTION	DATE	E.M.N.NO	DRAFT	CHKD	APPD
1	TMA-1KC		Ø	ORIGINAL RELEASE FOR PRODUCTION	5-13-77				

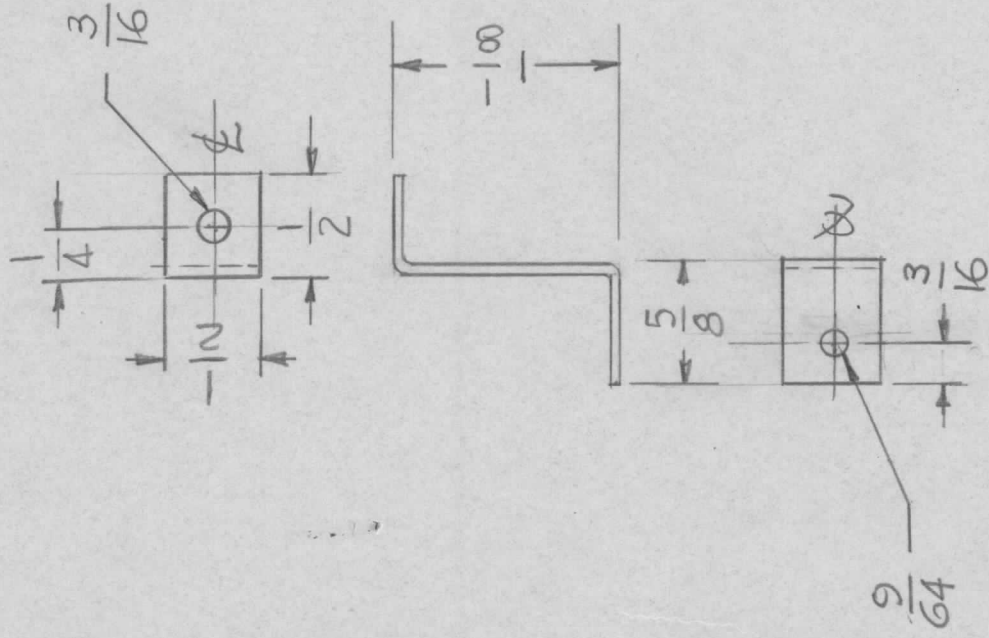


UNLESS OTHERWISE SPECIFIED DIMENSIONS ARE IN INCHES AND INCLUDE CHEMICALLY APPLIED OR PLATED FINISHES	REQ'D	ITEM	PART NUMBER	DESCRIPTION	SYM.
DECIMALS .X ± .05 .XX ± .01 .XXX ± .005 FRACTIONS 1/64 ANGLES 0°-30°				LIST OF MATERIAL	
MATERIAL .051 THK ALUM 5052-H32				THE TECHNICAL MATERIEL CORP. MAMARONECK, NEW YORK	
FINISH S404 YEL IRIDITE				PLATE ADAPTER (REAR PLATE)	
FINAL APPROVAL <i>[Signature]</i> MECH. DES. ELECT. DES. CHECKED DRAWN <i>G. DeGuzia</i>				SIZE A	
DATE 5/13/77 DATE DATE DATE DATE 10-11-76				CODE IDENT. NO. MS6747	ISSUE A
NOTICE TO PERSONS RECEIVING THIS DRAWING THE TECHNICAL MATERIEL CORPORATION claims proprietary right in the material disclosed hereon. This drawing is issued in confidence for engineering information only and may not be reproduced or used to manufacture anything shown hereon without permission from THE TECHNICAL MATERIEL CORPORATION to the user. This drawing is loaned for mutual assistance and is subject to recall at any time.				SCALE 1:1	SHEET OF

APPLICATION

REVISIONS

QTY	MODEL USED ON	ASSY NO.	LTR	DESCRIPTION	DATE	E.M.N.NO	DRAFT	CHKD	APPD
1	SME-5C		Ø	ORIGINAL RELEASE FOR PRODUCTION	1-13-78				

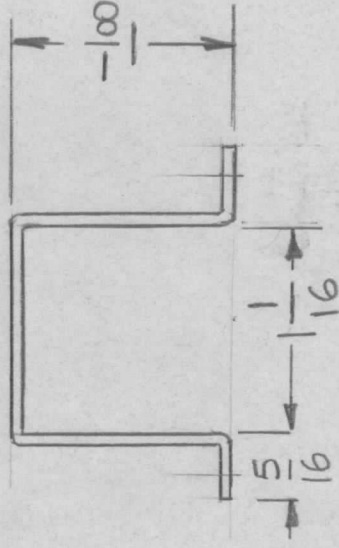
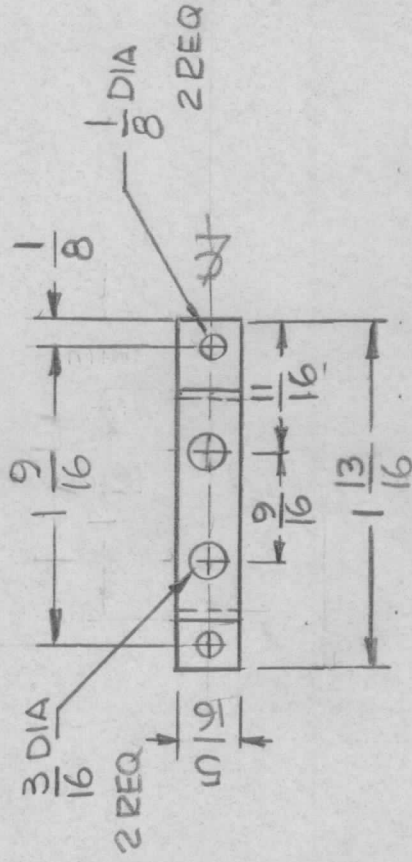


UNLESS OTHERWISE SPECIFIED DIMENSIONS ARE IN INCHES AND INCLUDE CHEMICALLY APPLIED OR PLATED FINISHES		REQ'D ITEM	PART NUMBER	DESCRIPTION	SYM.
DECIMALS	FRACTIONS	LIST OF MATERIAL			
.X ± .05	1/64				
.XX ± .01	1/64				
.XXX ± .005	0° - 30'	FINAL APPROVAL	DATE	THE TECHNICAL MATERIEL CORP. MAMARONECK, NEW YORK BRACKET MTG CAP.	
MATERIAL		MECH. DES.	DATE		
FINISH .051 ALUM		ELECT. DES.	DATE		
5052-H32		CHECKED	DATE		
YEL IRIDITE		DRAWN G.D.L	DATE 3-18-76		
NOTICE TO PERSONS RECEIVING THIS DRAWING		SCALE 1:1		SIZE A	OF
THE TECHNICAL MATERIEL CORPORATION claims proprietary right in the material disclosed hereon. This drawing is issued in confidence for engineering information only and may not be reproduced or used to manufacture anything shown hereon without permission from THE TECHNICAL MATERIEL CORPORATION to the user. This drawing is loaned for mutual assistance and is subject to recall at any time.		CODE IDENT. NO. 82679		DWG NO. MS 6755	ISSUE Ø
		SHEET		OF	

APPLICATION

REVISIONS

QTY	MODEL USED ON	ASSY NO.	LTR	DESCRIPTION	DATE	E.M.N.NO	DRAFT	CHKD	APPD
1	SME-5C		Ø	ORIGINAL RELEASE FOR PRODUCTION	1-13-78				

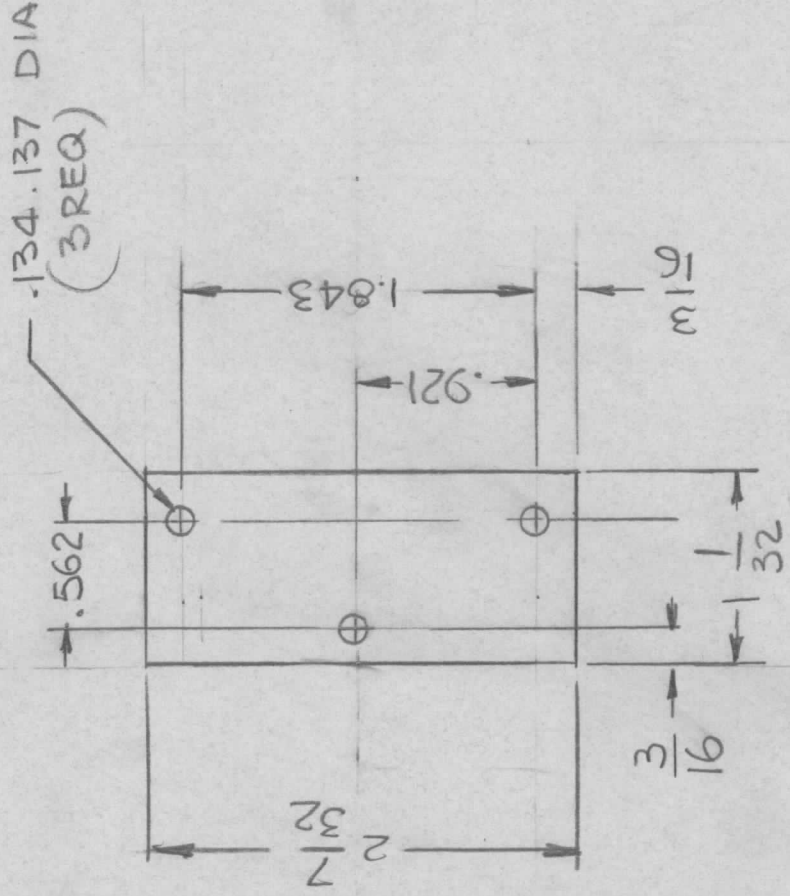


UNLESS OTHERWISE SPECIFIED DIMENSIONS ARE IN INCHES AND INCLUDE CHEMICALLY APPLIED OR PLATED FINISHES		REQ'D ITEM	PART NUMBER	DESCRIPTION	SYM.
DECIMALS	FRACTIONS	LIST OF MATERIAL			
.X ± .05	1/64	FINAL APPROVAL	DATE	THE TECHNICAL MATERIEL CORP.	
.XX ± .01	ANGLES	MECH. DES.	DATE	MAMARONECK, NEW YORK	
.XXX ± .005	0° - 30°	ELECT. DES.	DATE	BRACKET MTG CAPS	
MATERIAL 051THK		CHECKED	DATE	SIZE	DWG NO.
ALUM 5052-H32		DRAWN GDL	DATE 10-26-76	A	MS 6756
FINISH S404		SCALE 1:1			
YEL IRIDITE		SHEET OF			
<p>NOTICE TO PERSONS RECEIVING THIS DRAWING</p> <p>THE TECHNICAL MATERIEL CORPORATION claims proprietary right in the material disclosed hereon. This drawing is issued in confidence for engineering information only and may not be reproduced or used to manufacture anything shown hereon without permission from THE TECHNICAL MATERIEL CORPORATION to the user. This drawing is loaned for mutual assistance and is subject to recall at any time.</p>					
				ISSUE	Ø

REVISIONS

APPLICATION

QTY	MODEL USED ON	ASS'Y NO.	LTR	DESCRIPTION	DATE	E.M.N.NO	DRAFT	CHKD	APPD
4	GPTA-1KC	CW110	Ø	ORIGINAL RELEASE	1-10-77				*



UNLESS OTHERWISE SPECIFIED DIMENSIONS ARE IN INCHES AND INCLUDE CHEMICALLY APPLIED OR PLATED FINISHES	REQ'D ITEM	PART NUMBER	DESCRIPTION	SYM.
	LIST OF MATERIAL			
DECIMALS	FINAL APPROVAL	DATE	THE TECHNICAL MATERIEL CORP.	
.X ± .05	ØB	1/10/77	MAMARONECK, NEW YORK	
.XX ± .01	MECH. DES.	DATE	PLATE, MTG CLAMP	
.XXX ± .005	ELECT. DES.	DATE		
ANGLES	CHECKED	DATE		
1/64	DRAWN	DATE		
0° - 30°	G.D.L	DATE		
MATERIAL 1/8 THK ALUM 5052-H32				
FINISH S404 YEL IRIDITE				
ØS21 TESTURED TMC GREY VINYL PAINT				
NOTICE TO PERSONS RECEIVING THIS DRAWING				
THE TECHNICAL MATERIEL CORPORATION claims proprietary right in the material disclosed hereon. This drawing is issued in confidence for engineering information only and may not be reproduced or used to manufacture anything shown hereon without permission from THE TECHNICAL MATERIEL CORPORATION to the user. This drawing is loaned for mutual assistance and is subject to recall at any time.				
SIZE A	CODE IDENT. NO. 82679	DWG NO. MS 6757	ISSUE Ø	
SCALE 1:1	SHEET	OF		

APPLICATION

QTY MODEL USED ON ASS'Y NO. LTR

5 TMA-1KC

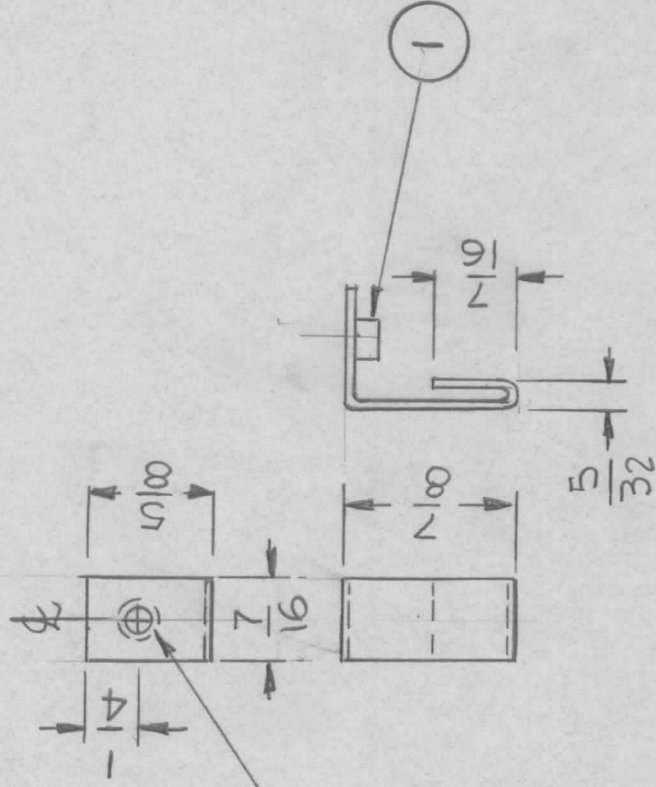
Ø

REVISIONS

DESCRIPTION DATE E.M.N.NO DRAFT CHKD APPD

ORIGINAL RELEASE FOR PRODUCTION

5-13-77



.191-.194 DIA

1	1	NT129-0632-3	NUT, ROUND		
REQ'D ITEM	PART NUMBER	DESCRIPTION	SYM.		

LIST OF MATERIAL

FINAL APPROVAL	28	DATE	12/11/76	THE TECHNICAL MATERIEL CORP.	
MECH. DES.		DATE		MAMARONECK, NEW YORK	
ELECT. DES.		DATE		COIL, TERMINAL TAP	
CHECKED		DATE			
DRAWN	G.D.L	DATE	11-10-76		

UNLESS OTHERWISE SPECIFIED DIMENSIONS ARE IN INCHES AND INCLUDE CHEMICALLY APPLIED OR PLATED FINISHES

DECIMALS FRACTIONS
 .X ± .05 TOLS. 1/64
 .XX ± .01 ANGLES 0°-30'
 .XXX ± .005

MATERIAL .040 THK COPPER

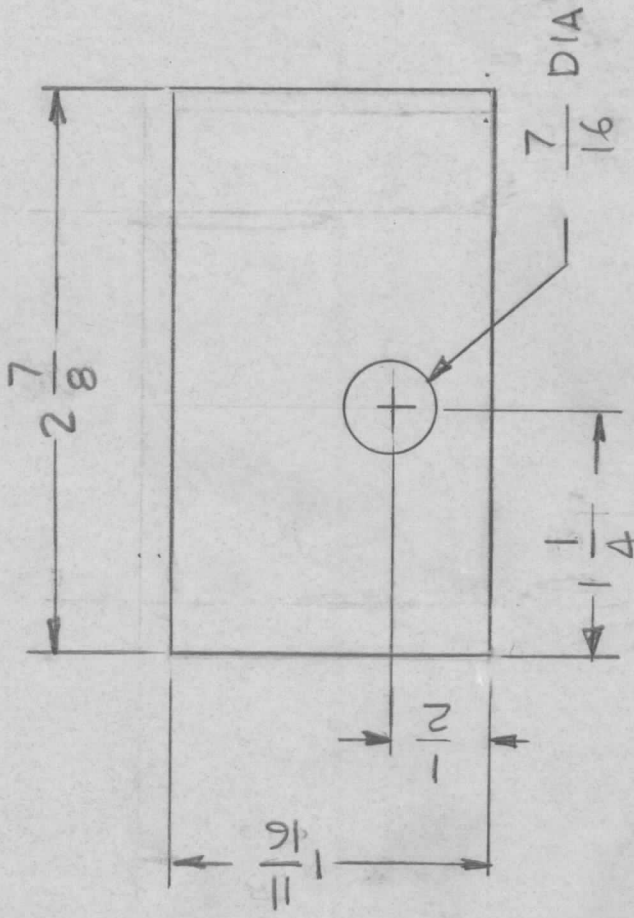
FINISH TIN PLATE

NOTICE TO PERSONS RECEIVING THIS DRAWING		SIZE	CODE IDENT. NO.	DWG NO.	ISSUE
THE TECHNICAL MATERIEL CORPORATION claims proprietary right in the material disclosed hereon. This drawing is issued in confidence for engineering information only and may not be reproduced or used to manufacture anything shown hereon without permission from THE TECHNICAL MATERIEL CORPORATION to the user. This drawing is loaned for mutual assistance and is subject to recall at any time.		A	82679	MS6758	Ø
SCALE		SHEET	OF		

REVISIONS

APPLICATION

QTY	MODEL USED ON	ASS'Y NO.	LTR	DESCRIPTION	DATE	E.M.N.NO	DRAFT	CHKD	APPD
1	SME-5C		Ø	ORIGINAL RELEASE FOR PRODUCTION	1-13-78				



FINISH NOTES:

1. S404 - IRIDITE 14-2 AL-COAT.
 2. S114 - ZINC CHROMATE PRIMER } FRONT AND EDGES ONLY
 3. TMC GRAYGE } OR
- PRIME AND PAINT PER CUSTOMER'S SPECIFICATIONS

REF: LD3063

REQ'D	ITEM	PART NUMBER	DESCRIPTION	SYM.
LIST OF MATERIAL				
FINAL APPROVAL	ØØØ	DATE 1-10-78	THE TECHNICAL MATERIEL CORP. MAMARONECK, NEW YORK PLATE, ADAPTER	
MECH. DES.		DATE		
ELECT. DES.		DATE		
CHECKED		DATE		
DRAWN	G.D.L	DATE 11-18-76		

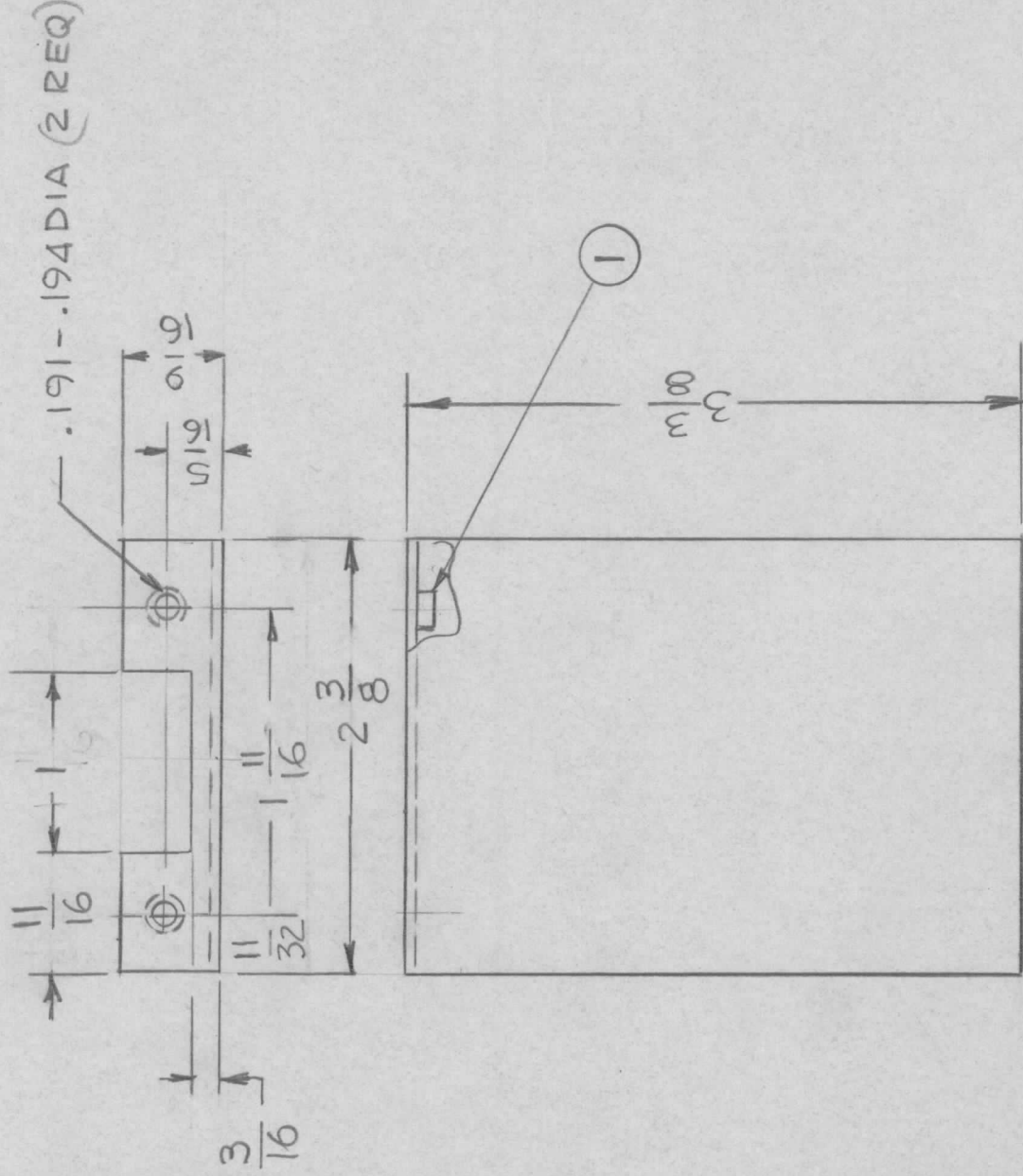
SIZE	CODE IDENT. NO.	DWG NO.	ISSUE
A	82679	MS 6759	Ø
SCALE	1:1	SHEET	OF

NOTICE TO PERSONS RECEIVING THIS DRAWING
 THE TECHNICAL MATERIEL CORPORATION claims proprietary right in the material disclosed hereon. This drawing is issued in confidence for engineering information only and may not be reproduced or used to manufacture anything shown hereon without permission from THE TECHNICAL MATERIEL CORPORATION to the user. This drawing is loaned for mutual assistance and is subject to recall at any time.

APPLICATION

REVISIONS

QTY	MODEL USED ON	ASS'Y NO.	LTR	DESCRIPTION	DATE	E.M.N.NO	DRAFT	CHKD	APPD
1	GPR-110		X						
			Ø	ORIGINAL RELEASE	1977		GDL		*



REQ'D	ITEM	PART NUMBER	DESCRIPTION	SYM.
2	1	NT 129 0632-4	NUT ROUND SWAGE	

UNLESS OTHERWISE SPECIFIED DIMENSIONS ARE IN INCHES AND INCLUDE CHEMICALLY APPLIED OR PLATED FINISHES		LIST OF MATERIAL	
DECIMALS	FRACTIONS	DATE	DATE
.X ± .05	1/64	0803	11/10/77
.XX ± .01	ANGLES	MECH. DES.	DATE
.XXX ± .005	0° - 30'		
MATERIAL '064 THK		ELECT. DES.	DATE
ALY 5052-H32		CHECKED	DATE
FINISH S404		DRAWN GDL	DATE 12-16-76
YEL IRIDITE			
		THE TECHNICAL MATERIEL CORP. MAMARONECK, NEW YORK	
		SHIELD TRANSFORMER	

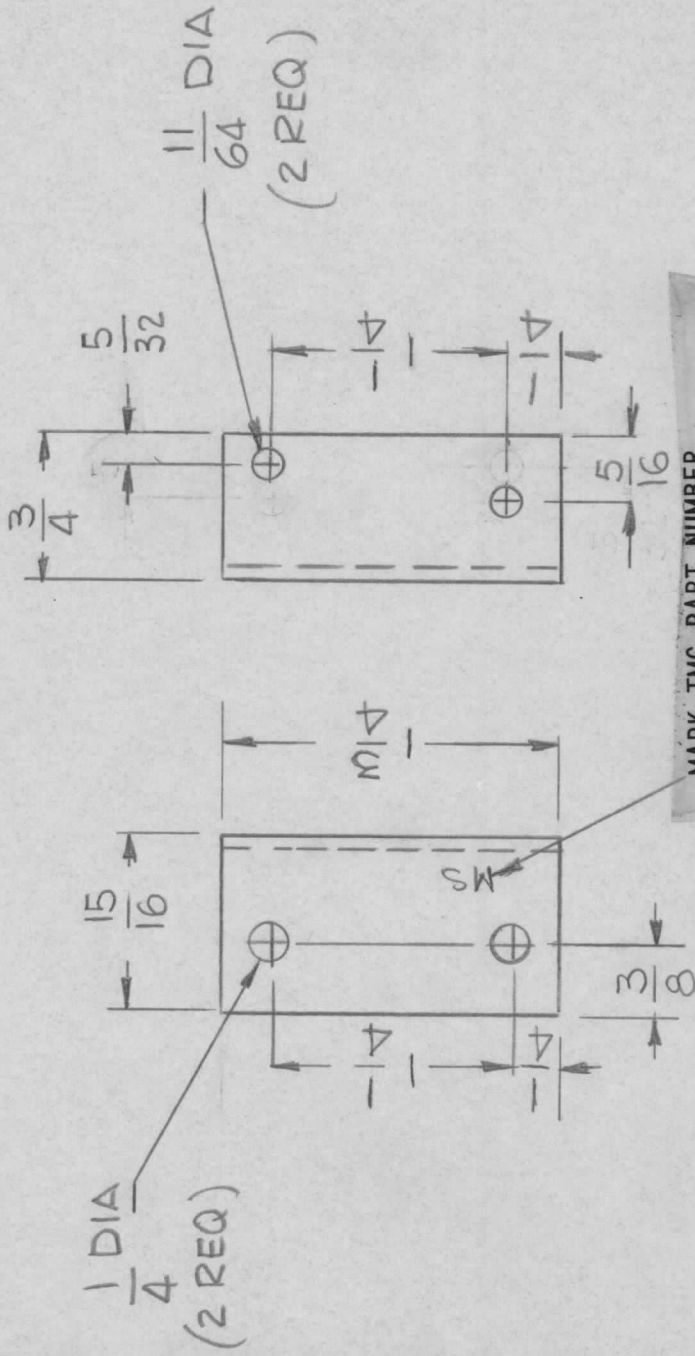
SIZE	CODE IDENT. NO.	DWG NO.	ISSUE
A	82679	MS 6762	0
SCALE	SHEET	OF	
1:1			

NOTICE TO PERSONS RECEIVING THIS DRAWING
 THE TECHNICAL MATERIEL CORPORATION claims proprietary right in the material disclosed hereon. This drawing is issued in confidence for engineering information only and may not be reproduced or used to manufacture anything shown hereon without permission from THE TECHNICAL MATERIEL CORPORATION to the user. This drawing is loaned for mutual assistance and is subject to recall at any time.

APPLICATION

REVISIONS

QTY	MODEL USED ON	ASS'Y NO.	LTR	DESCRIPTION	DATE	E.M.N.NO	DRAFT	CHKD	APPD
1	TOC-25-4			EXP RELEASE	1-10-77				



UNLESS OTHERWISE SPECIFIED:

1. USE MATERIAL THICKNESS FOR MAXIMUM RADIUS ON ALL BENDS.
2. ALL ANGULAR BENDS 90 DEGREES.
3. REMOVE ALL BURRS AND SHARP EDGES.

UNLESS OTHERWISE SPECIFIED
DIMENSIONS ARE IN INCHES
AND INCLUDE CHEMICALLY APPLIED
OR PLATED FINISHES

DECIMALS
.X ± .05
.XX ± .01
.XXX ± .005

FRACTIONS
1/64
ANGLES
0° .30'

MATERIAL .064 THK
AL 5052-H32

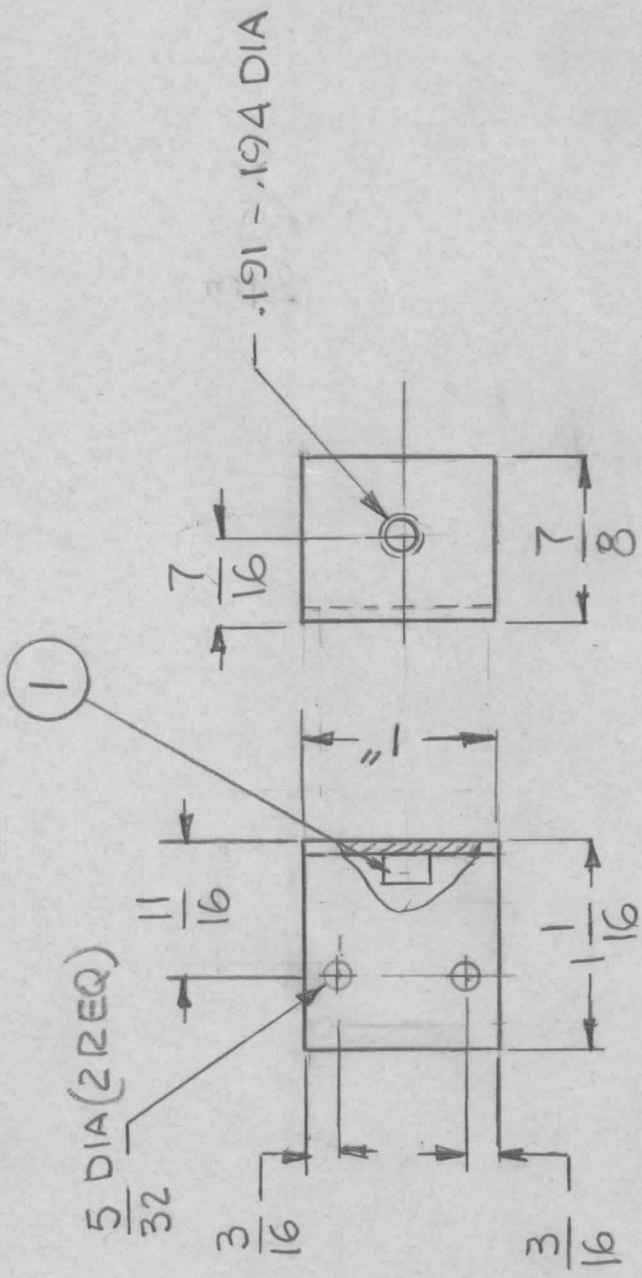
FINISH S404
YEL IRIDITE

REQ'D	ITEM	PART NUMBER	DESCRIPTION	SYM.	
LIST OF MATERIAL					
THE TECHNICAL MATERIEL CORP. MAMARONECK, NEW YORK					
BRACKET, JPI00.MTG					
FINAL APPROVAL	88	DATE	1/10/77		
MECH. DES.		DATE			
ELECT. DES.		DATE			
CHECKED		DATE			
DRAWN	G.DL	DATE	8-29-75		
NOTICE TO PERSONS RECEIVING THIS DRAWING THE TECHNICAL MATERIEL CORPORATION claims proprietary right in the material disclosed hereon. This drawing is issued in confidence for engineering information only and may not be reproduced or used to manufacture anything shown hereon without permission from THE TECHNICAL MATERIEL CORPORATION to the user. This drawing is loaned for mutual assistance and is subject to recall at any time.		SIZE	CODE IDENT. NO.	DWG NO.	ISSUE
		A	82679	MS 6663	
		SCALE	1" = 1"	SHEET	OF

REVISIONS

APPLICATION

QTY	MODEL USED ON	ASS'Y NO.	LTR	DESCRIPTION	DATE	E.M.N.NO	DRAFT	CHKD	APPD
2	ATU-1KC	AX 5217							



- UNLESS OTHERWISE SPECIFIED:
1. USE MATERIAL THICKNESS FOR MAXIMUM RADIUS ON ALL BENDS.
 2. ALL ANGULAR BENDS 90 DEGREES.
 3. REMOVE ALL BURRS AND SHARP EDGES.

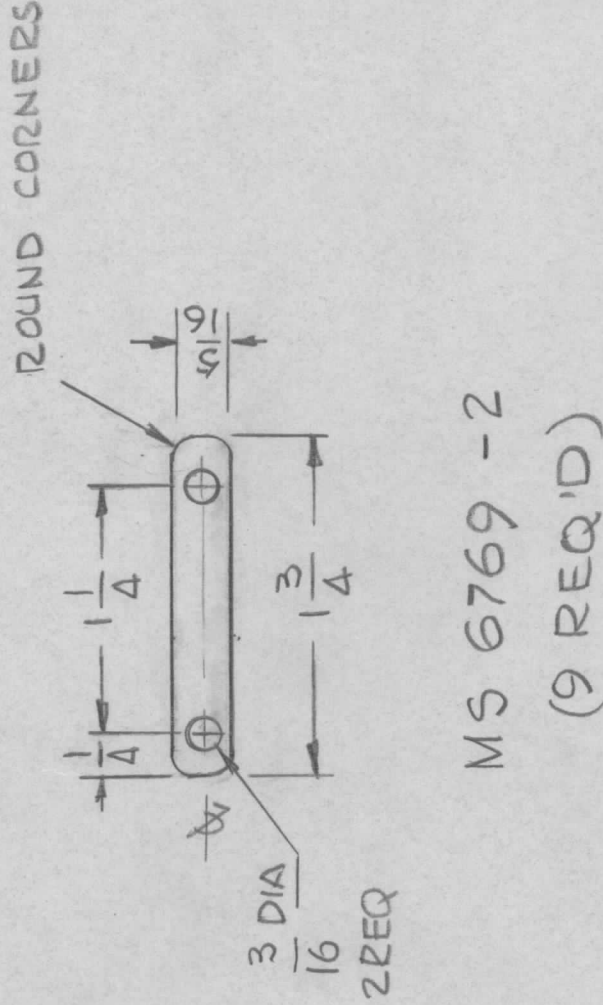
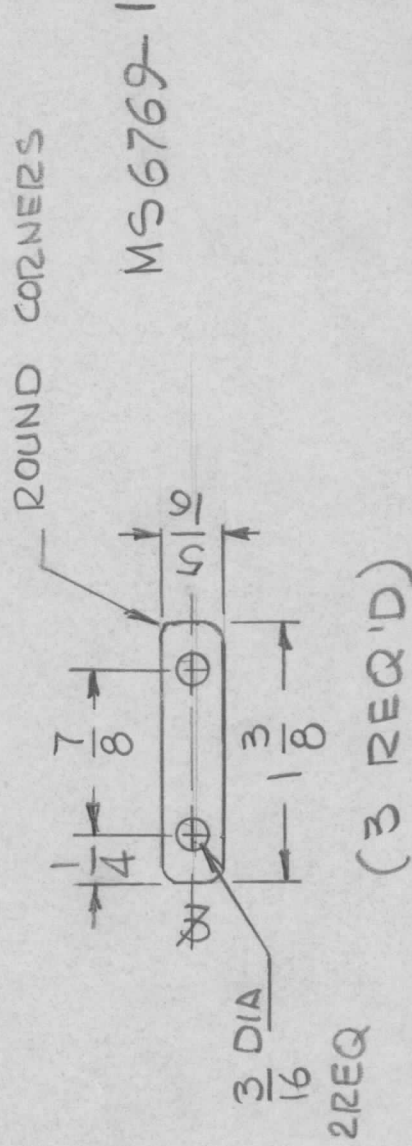
1	1	NT129 632-4	NUT ROUND		
LIST OF MATERIAL					
THE TECHNICAL MATERIEL CORP.			MAMARONECK, NEW YORK		
BRACKET, TR RELAY MTG.					
SIZE	CODE IDENT. NO.	DWG NO.	ISSUE		
A	82679	MS 6768	X		
SCALE	1:1	SHEET	OF		
FINAL APPROVAL	MECH. DES.	ELECT. DES.	CHECKED	DRAWN	DATE
MATERIAL .064 THK ALUM. 5052-H32					
FINISH S404					
YEL IRIDITE					

NOTICE TO PERSONS RECEIVING THIS DRAWING
 THE TECHNICAL MATERIEL CORPORATION claims proprietary right in the material disclosed hereon. This drawing is issued in confidence for engineering information only and may not be reproduced or used to manufacture anything shown hereon without permission from THE TECHNICAL MATERIEL CORPORATION to the user. This drawing is loaned for mutual assistance and is subject to recall at any time.

REVISIONS

APPLICATION

QTY	MODEL USED ON	ASS'Y NO.	LTR	DESCRIPTION	DATE	E.M.N.NO	DRAFT	CHKD	APPD
	TMAIKC	AX5215	Ø	ORIGINAL RELEASE FOR PRODUCTION	6-13-77				



REQ'D	ITEM	PART NUMBER	DESCRIPTION	SYM.
LIST OF MATERIAL				
THE TECHNICAL MATERIEL CORP. MAMARONECK, NEW YORK				
STRAP, CAP CONN				
UNLESS OTHERWISE SPECIFIED DIMENSIONS ARE IN INCHES AND INCLUDE CHEMICALLY APPLIED OR PLATED FINISHES	DECIMALS	FRACTIONS		
.X ± .05	TOLS.	1/64		
.XX ± .01	ANGLES	0°-30°		
.XXX ± .005				
MATERIAL	.051 THK			
ALY	5052-H32			
FINISH	S40A			
YEL IRIDITE				
FINAL APPROVAL	DATE	5/2/78		
MECH. DES.	DATE			
ELECT. DES.	DATE			
CHECKED	DATE			
DRAWN	DATE			

SIZE	CODE IDENT. NO.	DWG NO.	ISSUE
A	82679	MS 6769	Ø
SCALE		SHEET	OF

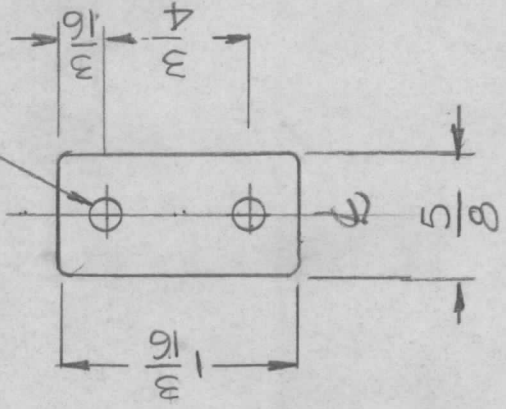
NOTICE TO PERSONS RECEIVING THIS DRAWING
 THE TECHNICAL MATERIEL CORPORATION claims proprietary right in the material disclosed hereon. This drawing is issued in confidence for engineering information only and may not be reproduced or used to manufacture anything shown hereon without permission from THE TECHNICAL MATERIEL CORPORATION to the user. This drawing is loaned for mutual assistance and is subject to recall at any time.

APPLICATION

REVISIONS

QTY	MODEL USED ON	ASS'Y NO.	LTR	DESCRIPTION	DATE	E.M.N.NO	DRAFT	CHKD	APPD
1	HFTA-10K		Ø	ORIGINAL RELEASE	9-22-80		dw		

13/64 DIA (2REQ)

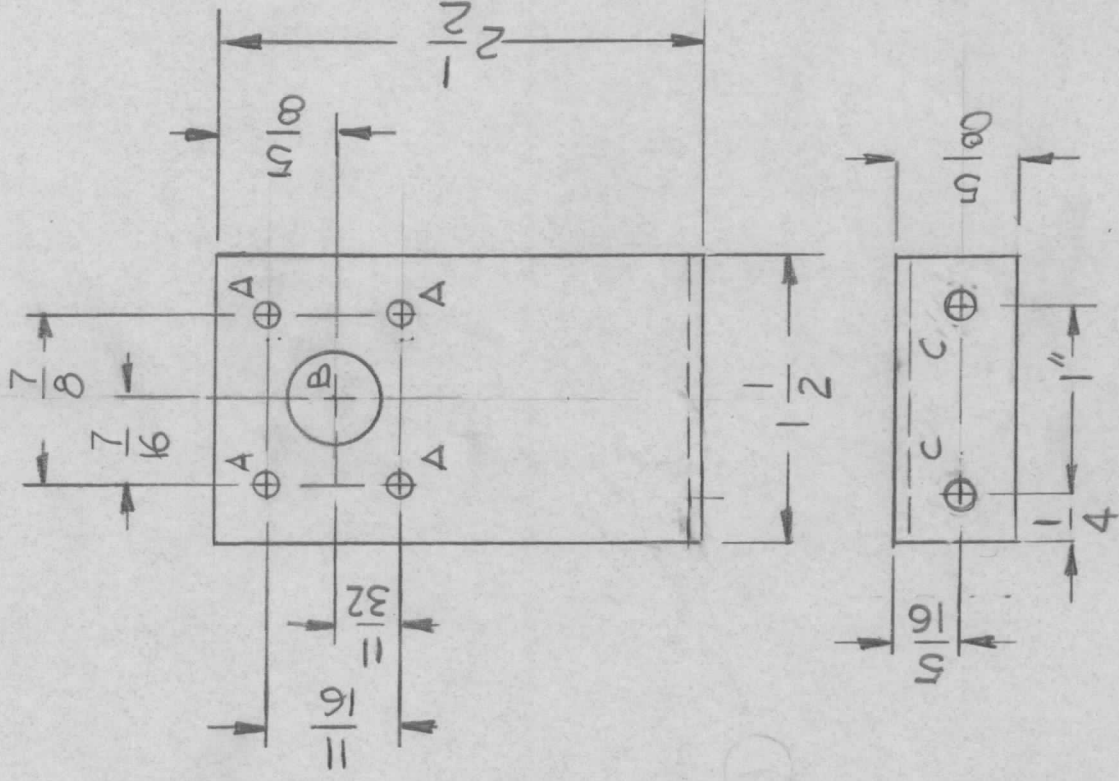


UNLESS OTHERWISE SPECIFIED DIMENSIONS ARE IN INCHES AND INCLUDE CHEMICALLY APPLIED OR PLATED FINISHES		REQ'D	ITEM	PART NUMBER	DESCRIPTION	SYM.
DECIMALS		LIST OF MATERIAL				
FRACTIONS		THE TECHNICAL MATERIEL CORP.				
TOLS.		MAMARONECK, NEW YORK				
ANGLES		PLATE, MTG. CAP				
° .30'		SIZE				
MATERIAL 064THK		CODE IDENT. NO.		DWG NO.		ISSUE
ALUM 5052-H32		A 82679		MS 6773		Ø
FINISH S404		SCALE 1:1		SHEET		OF
YEL IRIDITE		DATE 1-22-76		DRAWN G.D.L		
NOTICE TO PERSONS RECEIVING THIS DRAWING		FINAL APPROVAL				
THE TECHNICAL MATERIEL CORPORATION claims proprietary right in the material disclosed hereon. This drawing is issued in confidence for engineering information only and may not be reproduced or used to manufacture anything shown hereon without permission from THE TECHNICAL MATERIEL CORPORATION to the user. This drawing is loaned for mutual assistance and is subject to recall at any time.		DATE				
		MECH. DES.				
		DATE				
		ELECT. DES.				
		DATE				
		CHECKED				
		DATE				

APPLICATION

REVISIONS

QTY	MODEL USED ON	ASS'Y NO.	LTR	DESCRIPTION	DATE	E.M.N.NO	DRAFT	CHKD	APPD
1	KIT-423		φ	ORIG. REL. FOR PROD.	1-25-77	4	GDL		



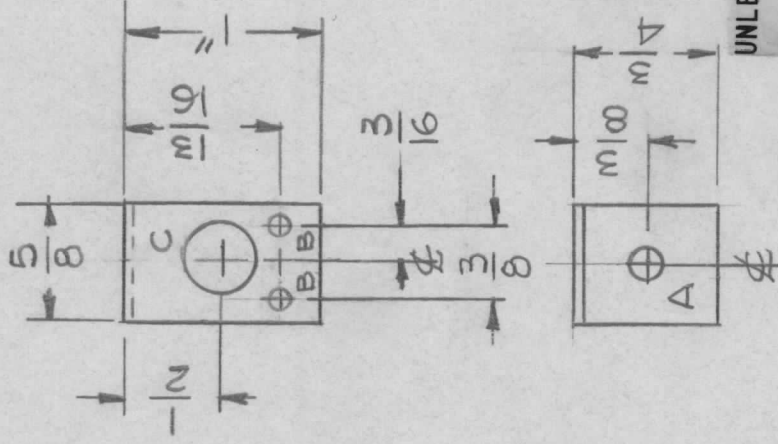
UNLESS OTHERWISE SPECIFIED DIMENSIONS ARE IN INCHES AND INCLUDE CHEMICALLY APPLIED OR PLATED FINISHES	REQ'D ITEM	PART NUMBER	DESCRIPTION	SYM.
	FINAL APPROVAL	DATE	LIST OF MATERIAL	
MECH. DES.	DATE	THE TECHNICAL MATERIEL CORP.		
ELECT. DES.	DATE	MAMARONECK, NEW YORK		
CHECKED	DATE	BRACKET, MTG, TR SWITCH		
DRAWN	DATE	SIZE	CODE IDENT. NO.	DWG NO.
GDL	1-6-77	A	82679	MS6774
MATERIAL .064 THK ALY 5052-H32		SCALE	1" = 1"	SHEET
FINISH S404				OF
YEL IRIDITE				ISSUE
				φ

NOTICE TO PERSONS RECEIVING THIS DRAWING
 THE TECHNICAL MATERIEL CORPORATION claims proprietary right in the material disclosed hereon. This drawing is issued in confidence for engineering information only and may not be reproduced or used to manufacture anything shown hereon without permission from THE TECHNICAL MATERIEL CORPORATION to the user. This drawing is loaned for mutual assistance and is subject to recall at any time.

APPLICATION

REVISIONS

QTY	MODEL USED ON	ASSY NO.	LTR	DESCRIPTION	DATE	E.M.N.NO	DRAFT	CHKD	APPD
1	TMAG-1K		Ø	ORIGINAL RELEASE FOR PRODUCTION	5-13-77				



HOLE:

A - 11/64 DIA

B - 7/64 DIA 2REQ

C - 3/8 DIA

UNLESS OTHERWISE SPECIFIED:

1. USE MATERIAL THICKNESS FOR MAXIMUM RADIUS ON ALL BENDS.
2. ALL ANGULAR BENDS 90 DEGREES.
3. REMOVE ALL BURRS AND SHARP EDGES.
4. MOUNT INSERTS AFTER FINISHING.

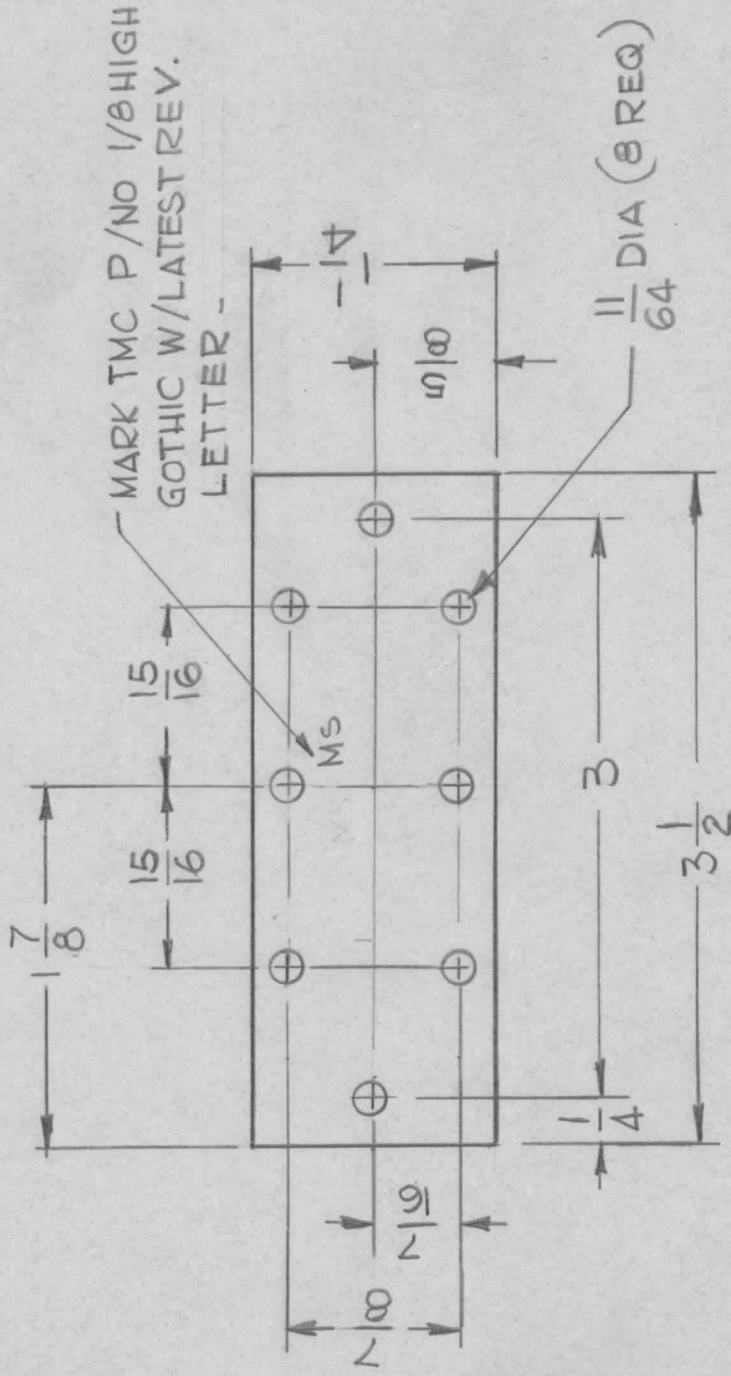
UNLESS OTHERWISE SPECIFIED DIMENSIONS ARE IN INCHES AND INCLUDE CHEMICALLY APPLIED OR PLATED FINISHES		REQ'D	ITEM	PART NUMBER	DESCRIPTION	SYM.
DECIMALS	FRACTIONS	FINAL APPROVAL			LIST OF MATERIAL	
.X ± .05	1/64	8/82			THE TECHNICAL MATERIEL CORP.	
.XX ± .01	ANGLES	MECH. DES.			MAMARONECK, NEW YORK	
.XXX ± .005	0° - 30'	ELECT. DES.			BRACKET MTG SENSITIVE SWITCH	
MATERIAL .064 THK		CHECKED				
AL 5052-H32		DRAWN	GDL			
FINISH S404						
YEL-IRIDITE						
NOTICE TO PERSONS RECEIVING THIS DRAWING		DATE				
THE TECHNICAL MATERIEL CORPORATION claims proprietary right in the material disclosed hereon. This drawing is issued in confidence for engineering information only and may not be reproduced or used to manufacture anything shown hereon without permission from THE TECHNICAL MATERIEL CORPORATION to the user. This drawing is loaned for mutual assistance and is subject to recall at any time.		DATE	5/11/77			
SIZE	CODE IDENT. NO.	DATE				
A	82679	DATE				
SCALE	DWG NO.	DATE				
1:1	MS 6775	DATE				
SHEET	ISSUE					
OF	A					

APPLICATION

REVISIONS

QTY MODEL USED ON ASS'Y NO. LTR DESCRIPTION DATE E.M.N.NO DRAFT CHKD APPD

1 TMA-1K



UNLESS OTHERWISE SPECIFIED DIMENSIONS ARE IN INCHES AND INCLUDE CHEMICALLY APPLIED OR PLATED FINISHES

DECIMALS FRACTIONS
 .X ± .05 TOLS. 1/64
 .XX ± .01 ANGLES
 .XXX ± .005 0°-30'

MATERIAL .064 THK
 AL 5052-H32

FINISH 6404

YEL IRIDITE

REQ'D	ITEM	PART NUMBER	DESCRIPTION	SYM.
LIST OF MATERIAL				
THE TECHNICAL MATERIEL CORP. MAMARONECK, NEW YORK				
PLATE, MTG. CAPACITORS				
SIZE	CODE IDENT. NO.	DWG NO.	ISSUE	
A	82679	MS 6776	Ø	
SCALE	1:1	SHEET	OF	

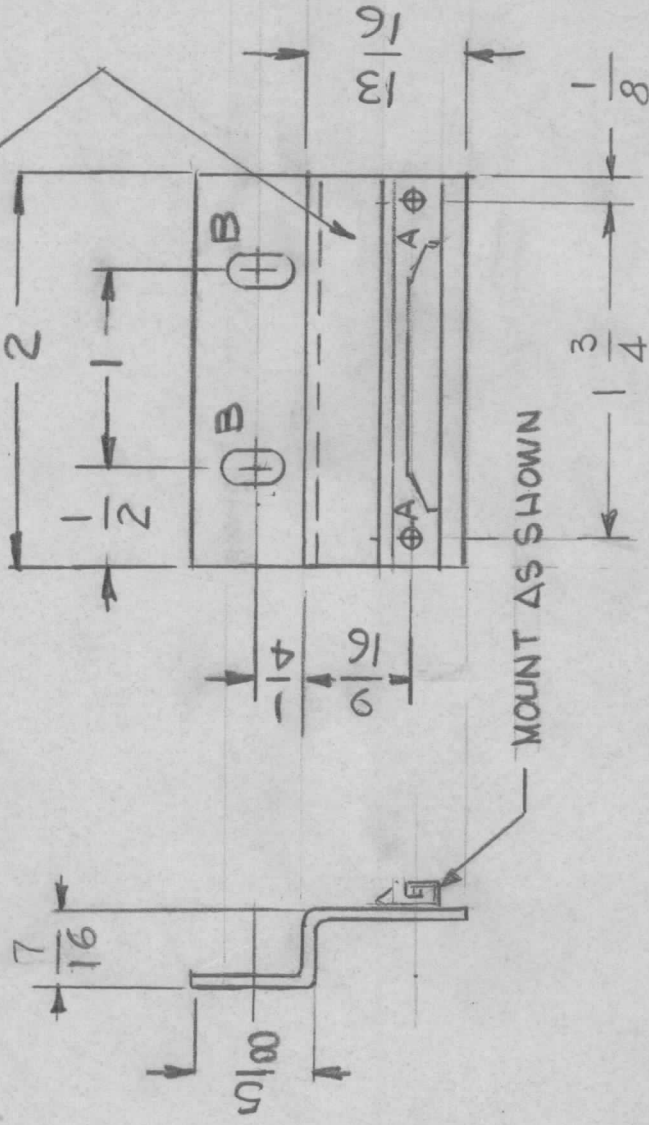
NOTICE TO PERSONS RECEIVING THIS DRAWING
 THE TECHNICAL MATERIEL CORPORATION claims proprietary right in the material disclosed hereon. This drawing is issued in confidence for engineering information only and may not be reproduced or used to manufacture anything shown hereon without permission from THE TECHNICAL MATERIEL CORPORATION to the user. This drawing is loaned for mutual assistance and is subject to recall at any time.

APPLICATION

REVISIONS

QTY	MODEL USED ON	ASS'Y NO.	LTR	DESCRIPTION	DATE	E.M.N.NO	DRAFT	CHKD	APPD
1	ATSA-3			ORIGINAL RELEASE FOR PRODUCTION	1-13-78				

MARK TMC P/NO. 1/8 HIGH
GOTHIC W/LATEST REV. LETTER



HOLES:

UNLESS OTHERWISE SPECIFIED:

1. USE MATERIAL THICKNESS FOR MAXIMUM RADIUS ON ALL BENDS.
2. ALL ANGULAR BENDS 90 DEGREES.
3. REMOVE ALL BURRS AND SHARP EDGES.
4. MOUNT INSERTS AFTER FINISHING.

A. 067 DIA 2REQ.

B- 11/64 X 3/8 SLOT 2REQ.

2	2	EY 100-4	RIVET		
1	1	CU157	RETAINER, PC.BD.		
REQ'D	ITEM	PART NUMBER	DESCRIPTION	SYM.	

LIST OF MATERIAL

FINAL APPROVAL	DATE	THE TECHNICAL MATERIEL CORP.			
MECH. DES.	DATE	MAMARONECK, NEW YORK			
ELECT. DES.	DATE	BRACKET, MTG. PC. BOARD			
CHECKED	DATE				
DRAWN	DATE				

MATERIAL 064 THK
AL 5052-H32

FINISH S404

VEL IRIDITE

DRAWN G.D.L. DATE 2-7-77

NOTICE TO PERSONS RECEIVING THIS DRAWING
THE TECHNICAL MATERIEL CORPORATION claims proprietary right in the material disclosed hereon. This drawing is issued in confidence for engineering information only and may not be reproduced or used to manufacture anything shown hereon without permission from THE TECHNICAL MATERIEL CORPORATION to the user. This drawing is loaned for mutual assistance and is subject to recall at any time.

SIZE	CODE IDENT. NO.	DWG NO.	ISSUE
A	82679	MS 6778	Ø
SCALE	1:1	SHEET	OF

APPLICATION

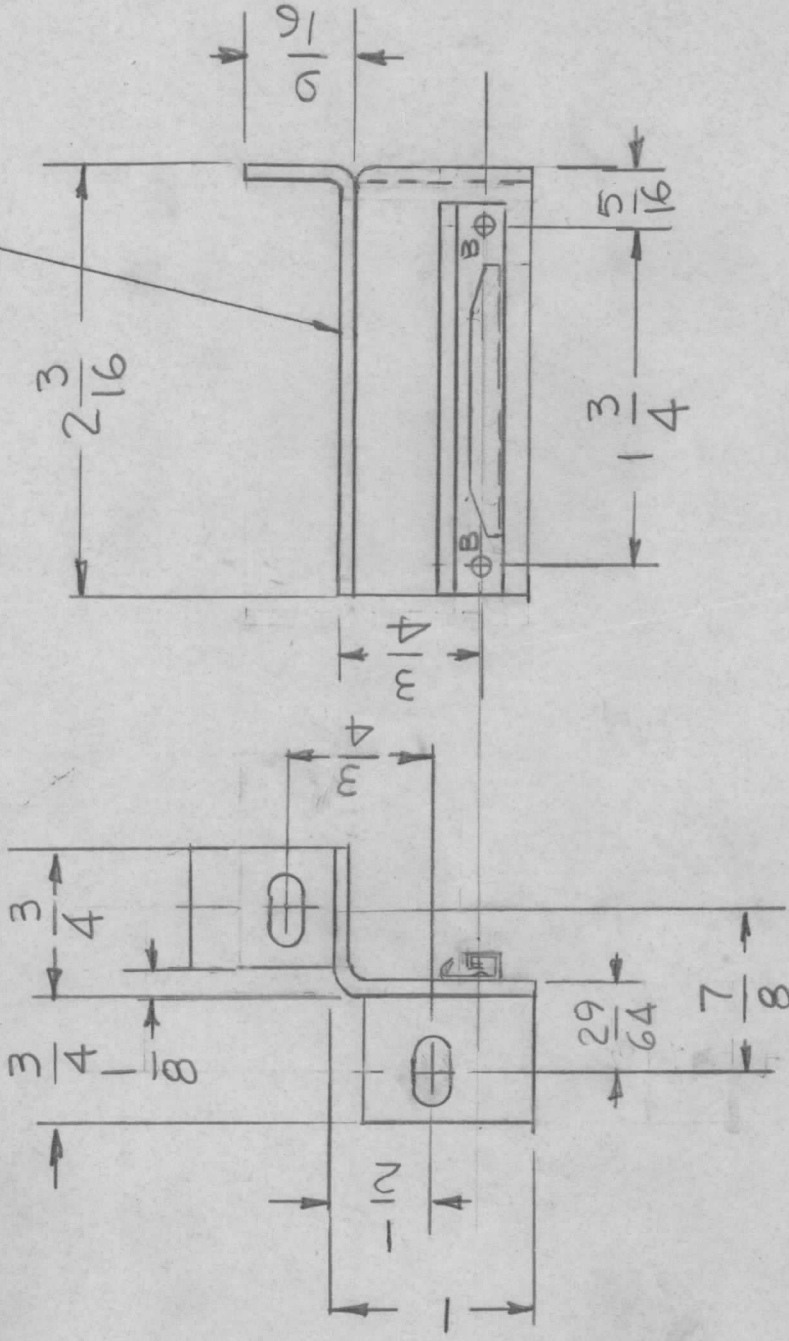
REVISIONS

QTY	MODEL USED ON	ASSY NO.	LTR	DESCRIPTION	DATE	E.M.N.NO	DRAFT	CHKD	APPD
1	ATSA-3		Ø	ORIGINAL RELEASE FOR PRODUCTION	1-13-78				

UNLESS OTHERWISE SPECIFIED:

1. USE MATERIAL THICKNESS FOR MAXIMUM RADIUS ON ALL BENDS.
2. ALL ANGULAR BENDS 90 DEGREES.
3. REMOVE ALL BURRS AND SHARP EDGES.
4. MOUNT INSERTS AFTER FINISHING.

MARK TMC P/NO 1/8 HIGH GOTHIC W/LATEST REV LETTER



HOLES:

A - 13/64 DIA 2REQ

B - .067 DIA 2REQ

REQ'D	ITEM	PART NUMBER	DESCRIPTION	SYM.
2	2	EY100-5	EYELET, FLAT FLANGE	
1	1	CU157-	RETAINER P.C. BOARD	

LIST OF MATERIAL

FINAL APPROVAL	DATE	MECH. DES.	DATE	ELECT. DES.	DATE	CHECKED	DATE	DRAWN	DATE
	12/78							GDL	2-7-77
THE TECHNICAL MATERIEL CORP. MAMARONECK, NEW YORK									
BRACKET, MTG PC BOARD									

NOTICE TO PERSONS RECEIVING THIS DRAWING
THE TECHNICAL MATERIEL CORPORATION claims proprietary right in the material disclosed hereon. This drawing is issued in confidence for engineering information only and may not be reproduced or used to manufacture anything shown hereon without permission from THE TECHNICAL MATERIEL CORPORATION to the user. This drawing is loaned for mutual assistance and is subject to recall at any time.

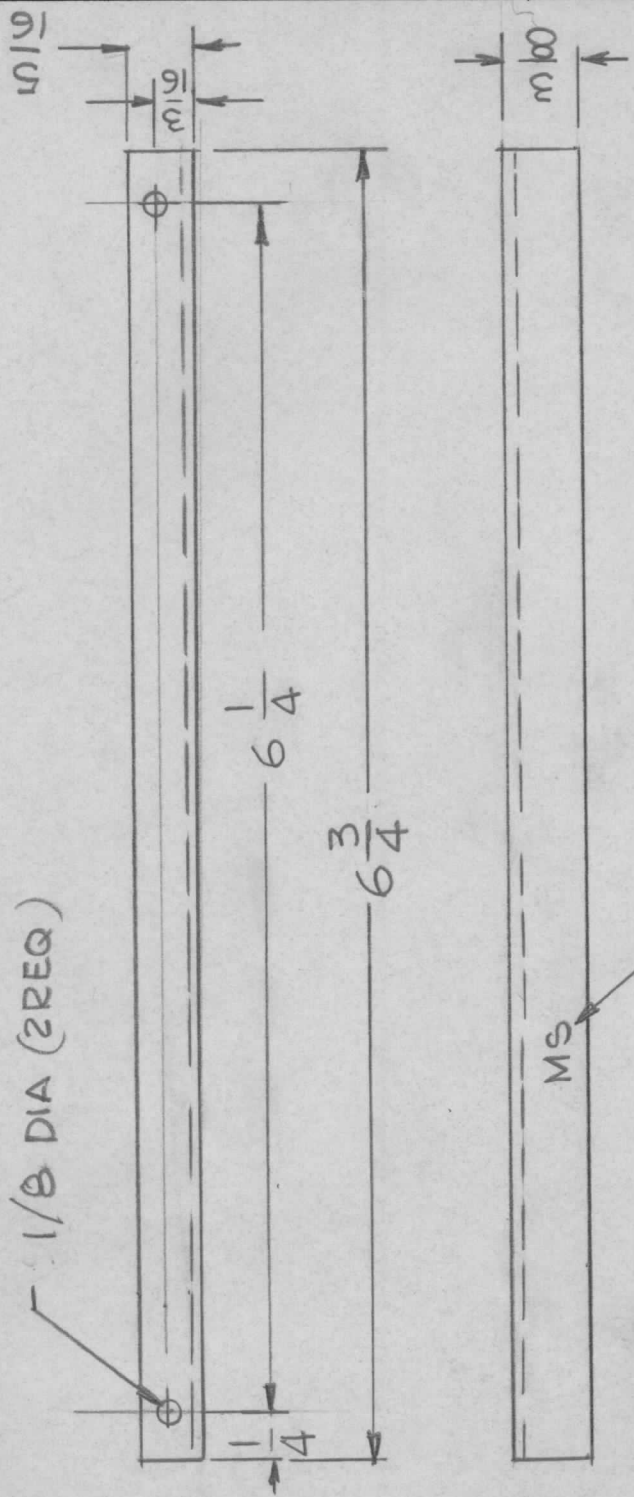
SIZE A CODE IDENT. NO. 82679 DWG NO. MS 6779 ISSUE Ø

SCALE 1:1 SHEET OF

REVISIONS

APPLICATION

QTY	MODEL USED ON	ASS'Y NO.	LTR	DESCRIPTION	DATE	E.M.N.NO	DRAFT	CHKD	APPD
1	ATSA-3		Ø	ORIGINAL RELEASE FOR PRODUCTION	1-13-78				



MARK TMC P/NO. 1/8 HIGH GOTHIC W/LATEST REV. LETTER

UNLESS OTHERWISE SPECIFIED DIMENSIONS ARE IN INCHES AND INCLUDE CHEMICALLY APPLIED OR PLATED FINISHES	REQ'D	ITEM	PART NUMBER	DESCRIPTION	SYM.
DECIMALS				LIST OF MATERIAL	
FRACTIONS				THE TECHNICAL MATERIEL CORP.	
.X ± .05	FINAL APPROVAL	ØØØ	DATE 1/5/79	MAMARONECK, NEW YORK	
.XX ± .01	MECH. DES.		DATE		
.XXX ± .005	ELECT. DES.		DATE		
MATERIAL -064TAK	CHECKED		DATE		
ALY 5052-H32	DRAWN	G-DL	DATE 2-10-77		
FINISH S404				STIFFENER, PC. BOARD	
YEL. IRIDITE					

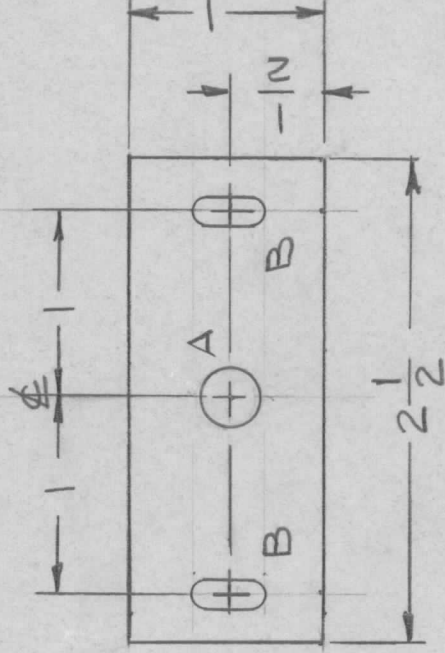
SIZE	CODE IDENT. NO.	DWG NO.	ISSUE
A	82679	MS 6780	Ø
SCALE	1:1	SHEET	OF

NOTICE TO PERSONS RECEIVING THIS DRAWING
 THE TECHNICAL MATERIEL CORPORATION claims proprietary right in the material disclosed hereon. This drawing is issued in confidence for engineering information only and may not be reproduced or used to manufacture anything shown hereon without permission from THE TECHNICAL MATERIEL CORPORATION to the user. This drawing is loaned for mutual assistance and is subject to recall at any time.

APPLICATION

REVISIONS

QTY	MODEL USED ON	ASS'Y NO.	LTR	DESCRIPTION	DATE	E.M.N.NO	DRAFT	CHKD	APPD
1	AX5176	AX5179	Ø	ORIG RELEASE FOR PROD.	4-19-77	-A	GDL	YMB	*



HOLES:

A - 5/16 DIA.

B - 3/16 X 3/8 SLOT 2 REQ

UNLESS OTHERWISE SPECIFIED
DIMENSIONS ARE IN INCHES
AND INCLUDE CHEMICALLY APPLIED
OR PLATED FINISHES

DECIMALS FRACTIONS
.X ± .05 TOLS. 1/64
.XX ± .01 ANGLES
.XXX ± .005 ° .30°

MATERIAL 064THK
ALY 5052-H32

FINISH 6404

YEL IRIDITE

REQ'D	ITEM	PART NUMBER	DESCRIPTION	SYM.
LIST OF MATERIAL				
THE TECHNICAL MATERIEL CORP. MAMARONECK, NEW YORK				
PLATE, BEARING				
SIZE	CODE IDENT. NO.	DWG NO.	ISSUE	
A	82679	MS 6781	Ø	
SCALE	1:1	SHEET	OF	
<p>NOTICE TO PERSONS RECEIVING THIS DRAWING THE TECHNICAL MATERIEL CORPORATION claims proprietary right in the material disclosed hereon. This drawing is issued in confidence for engineering information only and may not be reproduced or used to manufacture anything shown hereon without permission from THE TECHNICAL MATERIEL CORPORATION to the user. This drawing is loaned for mutual assistance and is subject to recall at any time.</p>				
FINAL APPROVAL	GDL	DATE	4/21/77	
MECH. DES.		DATE		
ELECT. DES.		DATE		
CHECKED		DATE		
DRAWN	G.D.L	DATE	2-7-77	

