

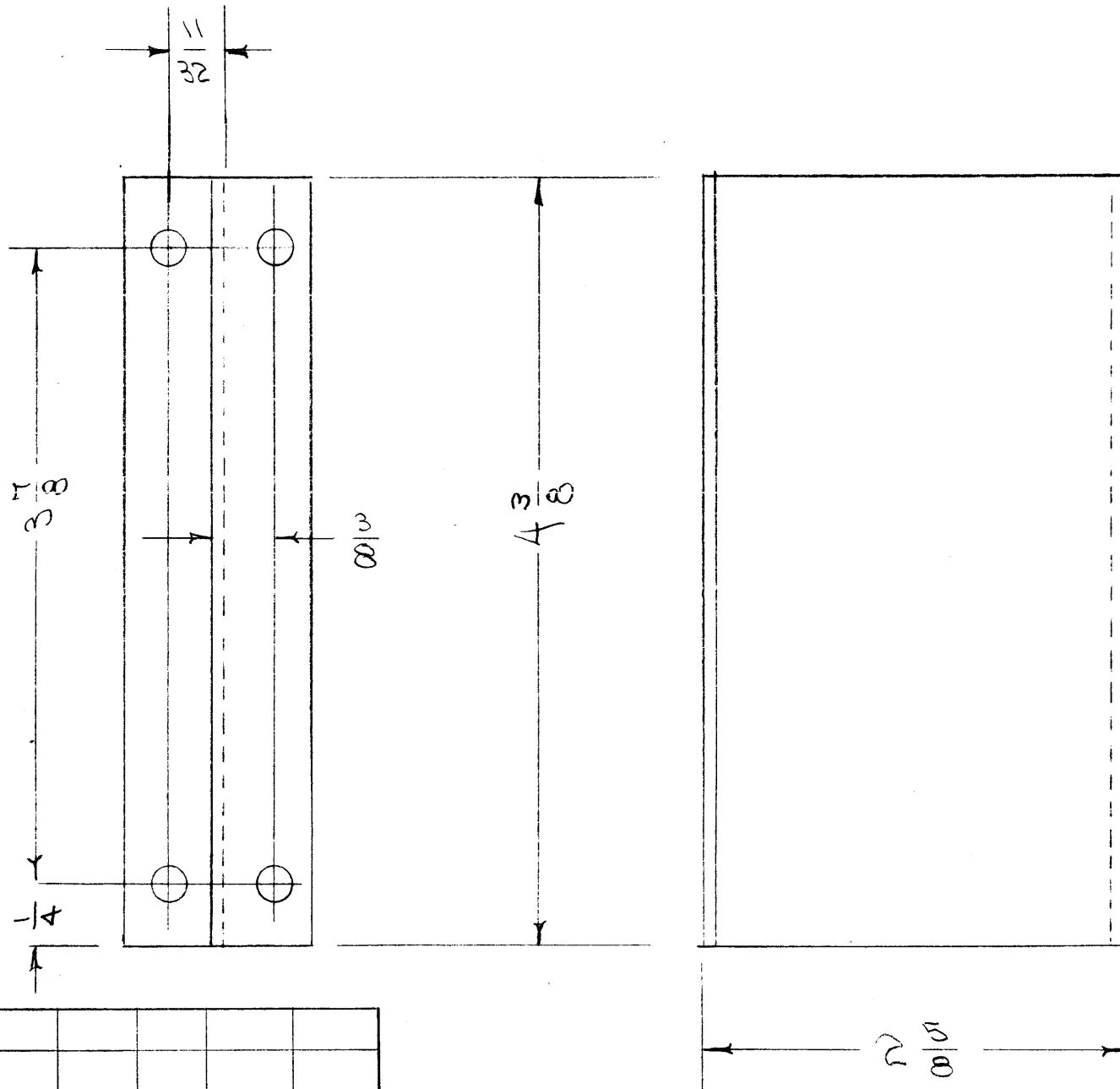
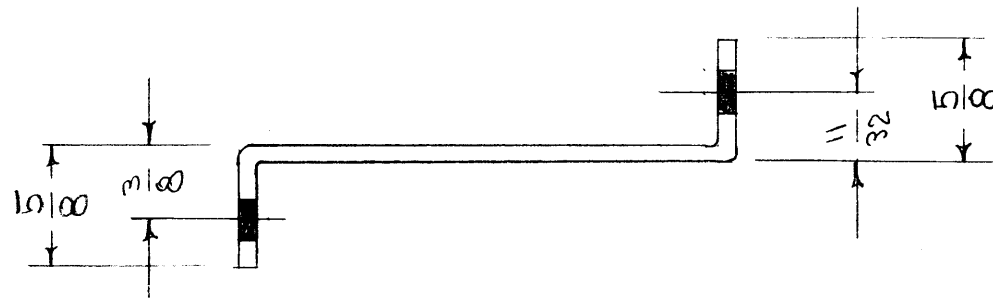
A - 9/64 (.140) DIA. 4 HOLES REQ.  
 B - 7/32 (.218) " 6 " " "

REF. DWG LD-284

A	1	S-404 WAS S-101	12/19/54	1001	MS		EMN
ISSUE	ITEM	CHANGED FROM	DATE	CH. NO.	DRAFTS	CHECKER	ENG. APP.
TOLERANCES			SCALE:				
DEC. DIM. ±			MAXIMUM ALLOWABLE TOLERANCES HAVE BEEN DETERMINED AND ANY DEVIATIONS WILL BE CAUSE FOR REJECTION.				
FRAC. DIM. ± 1/64			REM VE ALL BURRS AND SHARP EDGES				
ANGULAR DIM. ±							

1	RTF-2	MAS/OSC	11-10-58
1	RTF		2-2-56
REQ. PER UNIT	MODEL	PROJECT NO.	ASS'Y. NO.
USED ON			

REQ. ITEM	PART NO.	DESCRIPTION		SYMBOL
	.081	THE TECHNICAL MATERIEL CORP.		
	STOCK SIZE	MAMARONECK. NEW YORK		
	ALUMINUM	OVEN BRACKET, LEFT		
	MATERIAL	RTF		
	5052-H32	CSD. 2-2-56		
	TYPE & TEMPER	HEAT TREAT. SPEC.	DRAWN	CHECKED
	S-404 YELLOW IRIDITE			
	FINISH & SPEC. NO.	ELEC. DES. APP.	MECH. DES. APP.	
				MS-881 A



HOLES  
 11/32 (.218) DIA. 4 REQ.

NOTICE TO PERSONS RECEIVING THIS DRAWING

THE TECHNICAL MATERIEL CORPORATION claims proprietary right in the material disclosed hereon. This drawing is issued in confidence for engineering information only and may not be reproduced or used to manufacture anything shown hereon without permission from THE TECHNICAL MATERIEL CORPORATION to the user. This drawing is loaned for mutual assistance and is subject to recall at any time.

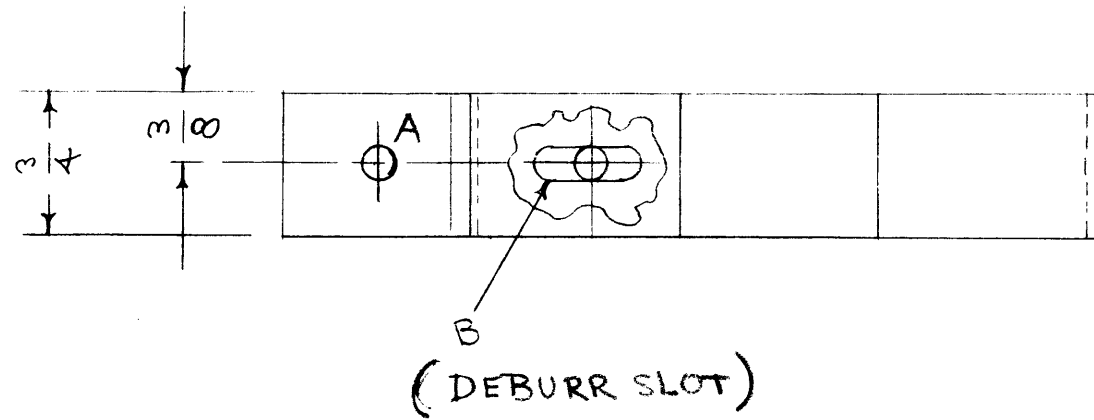
Property of:  
 THE TECHNICAL MATERIEL CORPORATION  
 MAMARONECK, NEW YORK

ISSUE	ITEM	CHANGED FROM	DATE	CH. NO.	DRAFTS	CHECKER	ENG. APP.
B	1	S-404 WAS S-101	12/19/59	1001	HC		EMN
A	2	Y4 WAS 3/8	4/25/56	1	JAR	CSE	WJ
	1	43/8 WAS 47/8					

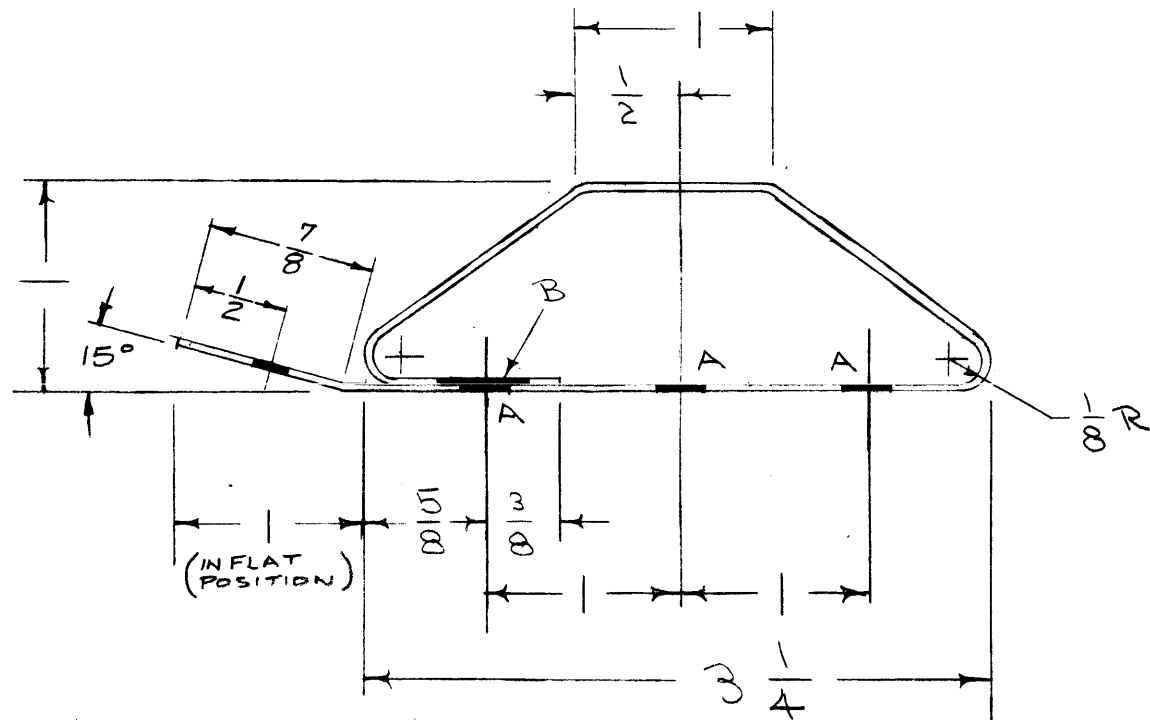
REQ. PER UNIT	MODEL	PROJECT NO.	ASS'Y. NO.	DATE
1	RTF-2	MAS/OSC		11-10-58
1	RTF			2-2-56

REQ. ITEM	PART NO.	DESCRIPTION	SYMBOL
	.081	THE TECHNICAL MATERIEL CORP. MAMARONECK, NEW YORK	
	ALUMINUM	OYEN BRACKET, RIGHT	
		RTF	
	5052-H32	5052-56	
		TYPE & TEMPER	
		HEAT TREAT. SPEC.	
	S-404 YELLOW IRIDITE	DRAWN	
		CHECKED	
		FINAL APPROVAL	
		ELEC. DES. APP.	
		MECH. DES. APP.	

MS-888 D

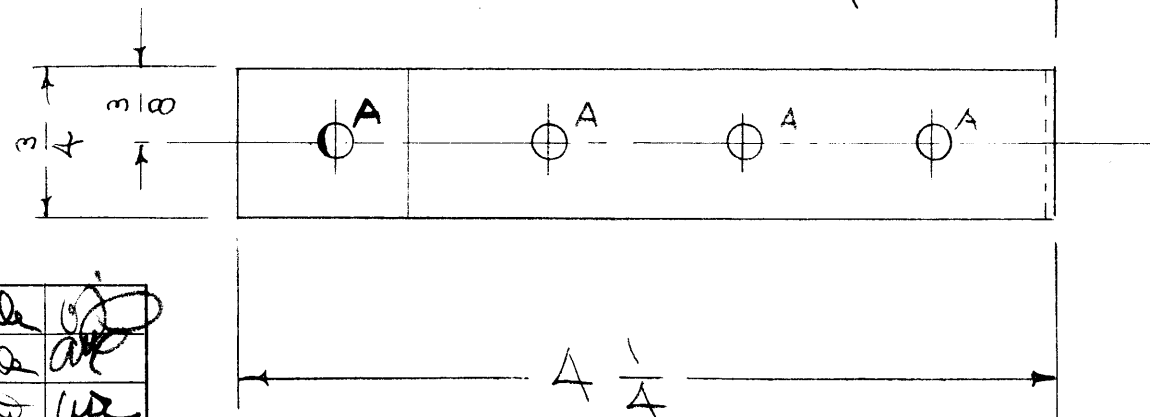


A - 13/64 (.203) DIA. 4 HOLES REQ.  
 B - 13/64 X 13/32 1 SLOT "



**NOTICE TO PERSONS RECEIVING THIS DRAWING**  
 THE TECHNICAL MATERIEL CORPORATION claims proprietary right in the material disclosed hereon. This drawing is issued in confidence for engineering information only and may not be reproduced or used to manufacture anything shown hereon without permission from THE TECHNICAL MATERIEL CORPORATION to the user. This drawing is loaned for mutual assistance and is subject to recall at any time.

Property of:  
 THE TECHNICAL MATERIEL CORPORATION  
 MAMARONECK, NEW YORK

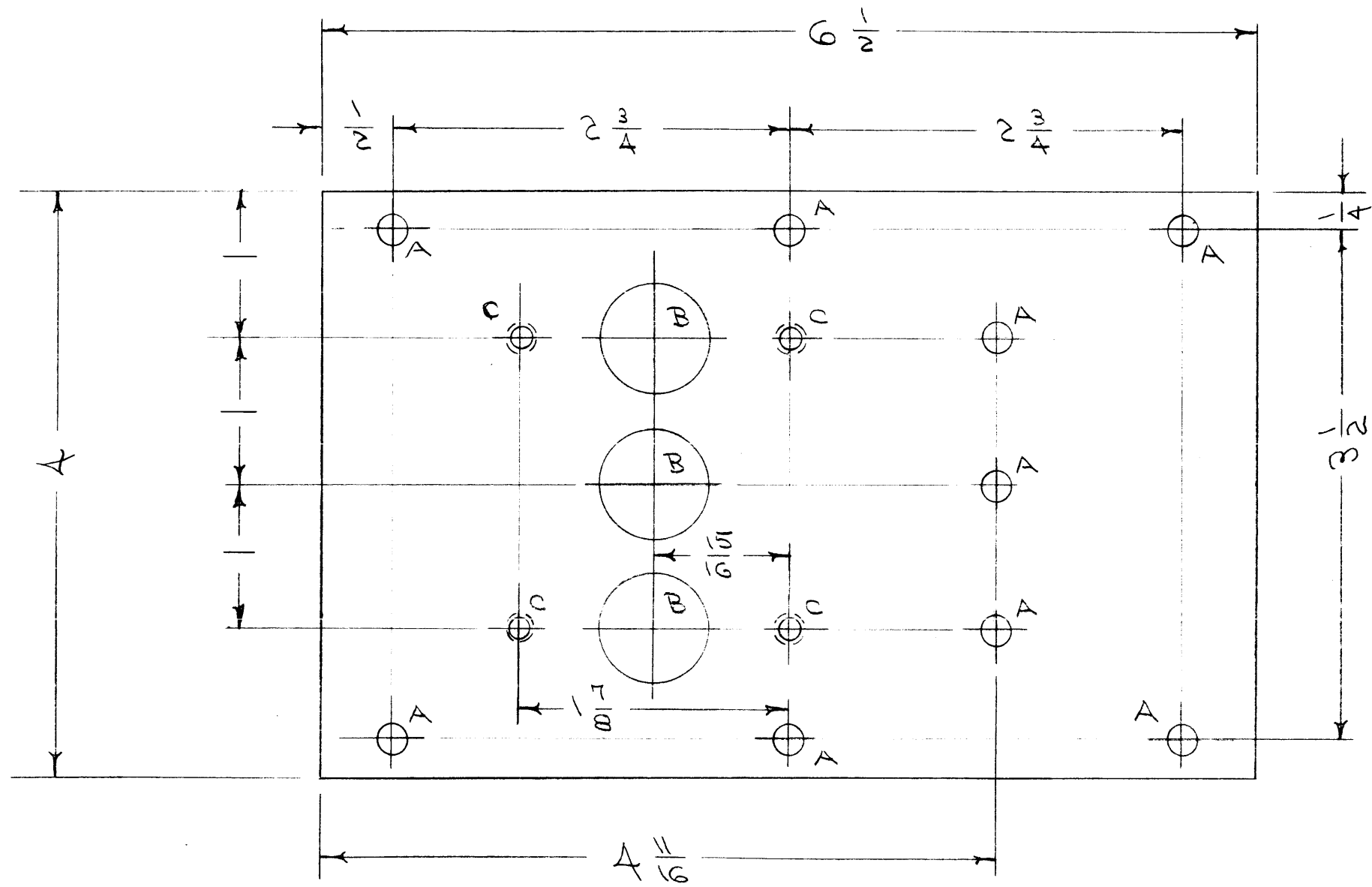


D	1	15° BEND ADDED TO LIP	12/18/58	583	16	<i>Handwritten initials</i>	<i>Handwritten initials</i>
C	2	<del>25 DELETED</del>	3.4.57	3	82.	<i>Handwritten initials</i>	<i>Handwritten initials</i>
	1	TOLERANCE DELETED					
B	1	XS Added	7/31/56	2	<i>Handwritten initials</i>	<i>Handwritten initials</i>	<i>Handwritten initials</i>
A	1	COMPLETE REVISION	4/19/56	1	<i>Handwritten initials</i>	<i>Handwritten initials</i>	<i>Handwritten initials</i>
ISSUE	ITEM	CHANGED FROM	DATE	CH. NO.	DRAFTS	CHECKER	ENG. APP.
TOLERANCES			SCALE:				
DEC. DIM. ±			MAXIMUM ALLOWABLE TOLERANCES HAVE BEEN DETERMINED AND ANY DEVIATIONS WILL BE CAUSE FOR REJECTION.				
FRAC. DIM. ± 1/64			REMOVE ALL BURRS AND SHARP EDGES				
ANGULAR DIM. ±							

1	CAB-7	10-24-58
REQ. PER UNIT	MODEL	DATE
	PROJECT NO.	2-7-56
	ASS'Y. NO.	
USED ON		

REQ. ITEM	PART NO.	DESCRIPTION	SYMBOL
	.025 THK.	THE TECHNICAL MATERIEL CORP.	
	STOCK SIZE	MAMARONECK, NEW YORK	
	PHOSPHOR BRONZE	WIPER, GROUND	
	MATERIAL	GPT-750	
SPRING GRADE A		<i>Handwritten initials</i>	<i>Handwritten initials</i>
TYPE & TEMPER	HEAT TREAT. SPEC.	DRAWN	CHECKED
SILVER PLATE .0008		<i>Handwritten initials</i>	<i>Handwritten initials</i>
FINISH & SPEC. NO.	ELEC. DES. APP.	MECH. DES. APP.	
			MS-888 D

MS-890 A



A - 13/64 (.203) D.  
 B - 3/4 (.750) "  
 C - DRILL & TAP  
 8-32

9 HOLES REQ.  
 3 " "  
 A REQ.

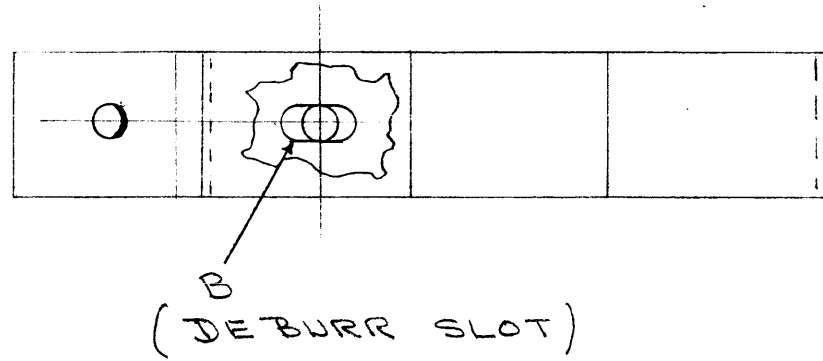
**NOTICE TO PERSONS RECEIVING THIS DRAWING**  
 THE TECHNICAL MATERIEL CORPORATION claims proprietary right in the material disclosed hereon. This drawing is issued in confidence for engineering information only and may not be reproduced or used to manufacture anything shown hereon without permission from THE TECHNICAL MATERIEL CORPORATION to the user. This drawing is loaned for mutual assistance and is subject to recall at any time.  
 Property of:  
 THE TECHNICAL MATERIEL CORPORATION  
 MAMARONECK, NEW YORK

A	1	S-404 WAS S-101	12/14/59	1001	MS		EMN
ISSUE	ITEM	CHANGED FROM	DATE	CH. NO.	DRAFTS	CHECKER	ENG. APP.
TOLERANCES		SCALE:					
DEC. DIM. ±		MAXIMUM ALLOWABLE TOLERANCES HAVE BEEN DETERMINED AND ANY DEVIATIONS WILL BE CAUSE FOR REJECTION.					
FRAC. DIM. ± 1/64		REMOVE ALL BURRS AND SHARP EDGES					
ANGULAR DIM. ±							

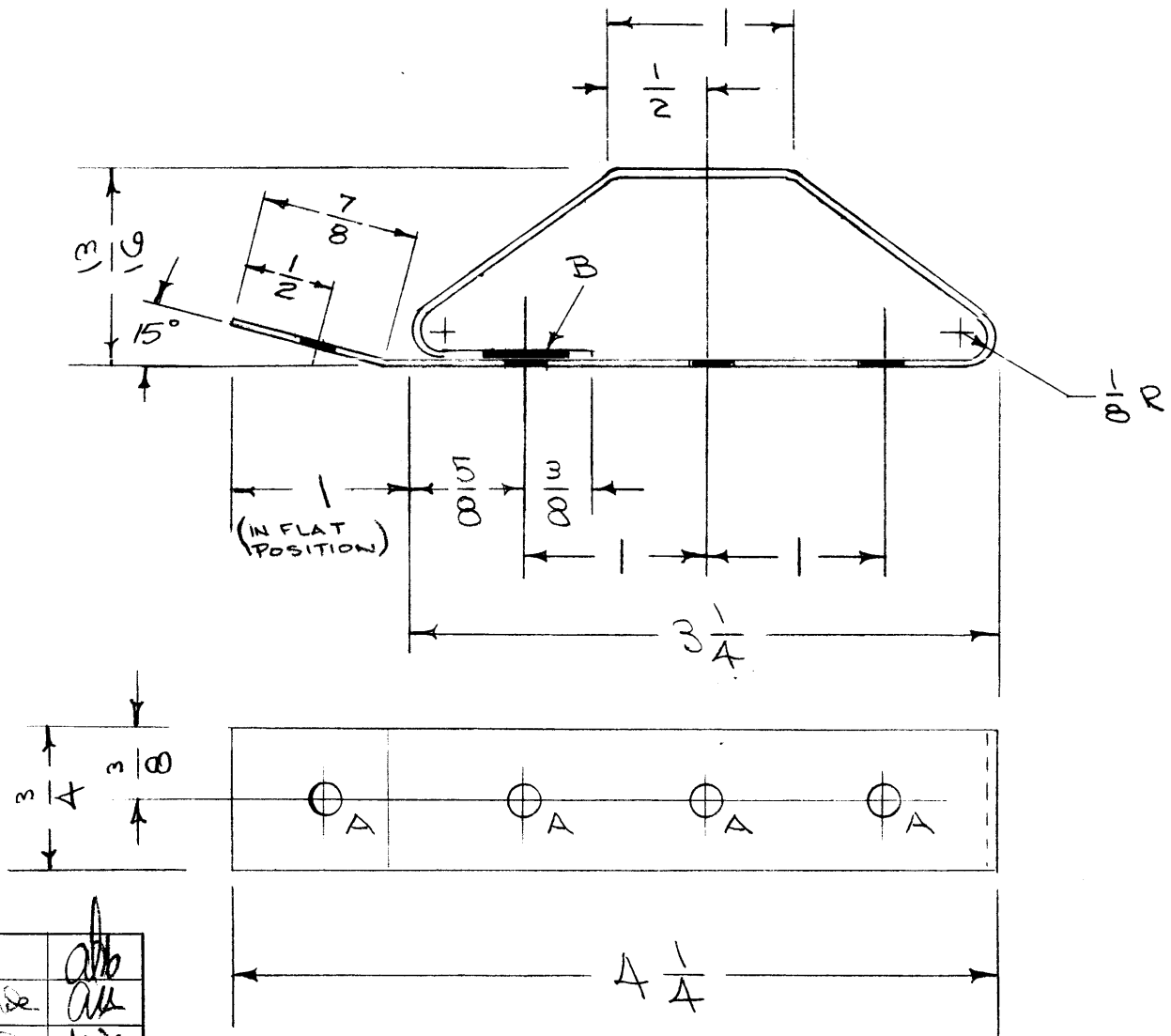
1	CAB/FRAME			2-9-56
REQ. PER UNIT	MODEL	PROJECT NO.	ASS'Y. NO.	DATE
USED ON				

REQ. ITEM	PART NO.	DESCRIPTION		SYMBOL
	1/8 THICK	THE TECHNICAL MATERIEL CORP.		
	STOCK SIZE	MAMARONECK, NEW YORK		
	ALUMINUM	PLATE, R.F. WIPER		
	MATERIAL	CAB/FRAME	GPT-750	
24S T3				
TYPE & TEMPER	HEAT TREAT. SPEC.	DRAWN	CHECKED	FINAL APPROVAL
S-404 YELLOW IRIDITE				MS-890 A
FINISH & SPEC. NO.		ELEC. DES. APP.	MECH. DES. APP.	

MS-891 D



A HOLES - 13/64 (.203) DIA. 4 REQ.  
 B SLOT 13/64 X 13/32 1 "



NOTICE TO PERSONS RECEIVING THIS DRAWING

THE TECHNICAL MATERIEL CORPORATION claims proprietary right in the material disclosed hereon. This drawing is issued in confidence for engineering information only and may not be reproduced or used to manufacture anything shown hereon without permission from THE TECHNICAL MATERIEL CORPORATION to the user. This drawing is loaned for mutual assistance and is subject to recall at any time.

Property of:

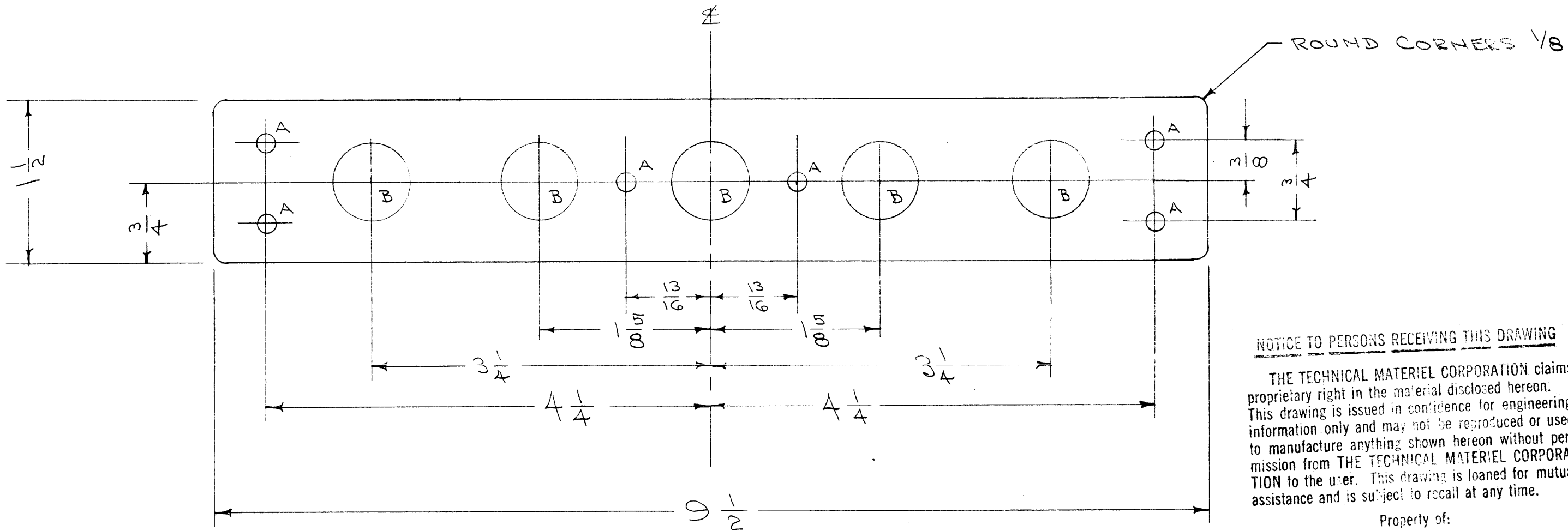
THE TECHNICAL MATERIEL CORPORATION  
 MAMARONECK, NEW YORK

D	1	15° Bend Added to Lip	12/15/58	584	16			
C	2	25° DELETED						
C	1	TOLERANCE DELETED	3-4-57	3	SC.	JAW	AW	
B	2	25° Added	6/4/56	2	JAW	AW	WJ	
B	1	15/16 DIM. Deleted						
A	1	COMPLETE REVISION	4/15/16	1	ESD	AW	WJ	
ISSUE	ITEM	CHANGED FROM	DATE	CH. NO.	DRAFTS	CHECKER	ENG. APP.	
TOLERANCES		SCALE:						
DEC. DIM. ±		MAXIMUM ALLOWABLE TOLERANCES HAVE BEEN DETERMINED AND ANY DEVIATIONS WILL BE CAUSE FOR REJECTION.						
FRAC. DIM. ± 1/64		REMOVE ALL BURRS AND SHARP EDGES						
ANGULAR DIM. ±								
		1	CAB-7				10-24-58	
		1	CAB/FR.				2-9-56	
REQ. PER UNIT		MODEL	PROJECT NO.	ASS'Y. NO.	DATE			
		USED ON						

REQ. ITEM	PART NO.	DESCRIPTION	SYMBOL
		THE TECHNICAL MATERIEL CORP. MAMARONECK, NEW YORK	
	.025 THK		
	STOCK SIZE		
	PHOSPHOR BRONZE	WIPER, R.F.	
	MATERIAL	GPT-750	
SPRING GRADE A.			
TYPE & TEMPER	HEAT TREAT. SPEC.	DRAWN	CHECKED
SILVER PLATE .0008			
FINISH & SPEC. NO.	ELEC. DES. APP.	MECH. DES. APP.	
			MS-891 D

MS-906 C

A - 1/64 (.171) DIA. 6 HOLES REQ.  
B - 3/4 (.750) " " " "



NOTICE TO PERSONS RECEIVING THIS DRAWING

THE TECHNICAL MATERIEL CORPORATION claims proprietary right in the material disclosed herein. This drawing is issued in confidence for engineering information only and may not be reproduced or used to manufacture anything shown hereon without permission from THE TECHNICAL MATERIEL CORPORATION to the user. This drawing is loaned for mutual assistance and is subject to recall at any time.

Property of:  
THE TECHNICAL MATERIEL CORPORATION  
MAMARONECK, NEW YORK

Ref - (1) LD-435

ISSUE	ITEM	CHANGED FROM	DATE	CH. NO.	DRAFTS	CHECKER	ENG. APP.
C	1	S-404 WAS S-101	12/14/57	1001	HAB		EMN
B	1	STAMPING DELE. STAMPING REF. ADDED	7/24/58	2	HAB	file	AM
A	1	FIN. WAS S101, S114 & S-115 OUTSIDE EDGES ONLY OR CUST. REQ.	7/21/58	1	AM	file	AM

TOLERANCES		SCALE:
DEC. DIM. ±		MAXIMUM ALLOWABLE TOLERANCES HAVE BEEN DETERMINED AND ANY DEVIATIONS WILL BE CAUSE FOR REJECTION. REMOVE ALL BURRS AND SHARP EDGES
FRAC. DIM. ± 1/64		
ANGULAR DIM. ±		

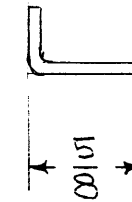
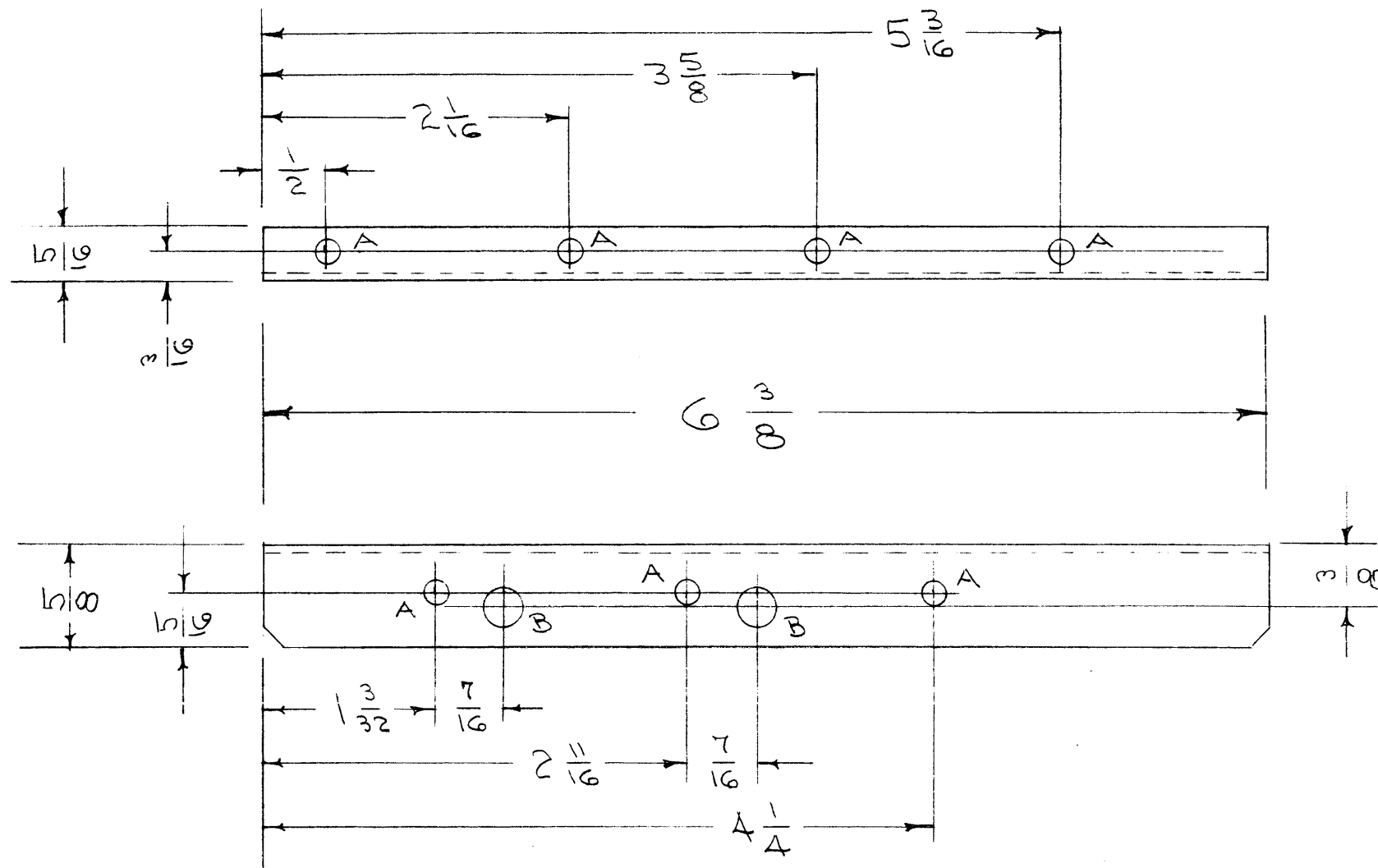
REQ. PER UNIT	MODEL	PROJECT NO.	ASS'Y. NO.	DATE
1	HFD-1			3-16-56
1	LFD-1			3-5-56

USED ON

REQ. ITEM	PART NO.	DESCRIPTION	SYMBOL
	.064	THE TECHNICAL MATERIEL CORP. MAMARONECK, NEW YORK	
	STOCK SIZE		
	ALUMINUM	PANEL, REAR	
	MATERIAL	HFD-1, LFD-1	
	52S H32	CDR 3/5/56 RB	AJJ.
	TYPE & TEMPER	HEAT TREAT. SPEC.	DRAWN
	S-404 YELLOW IRIDITE		CHECKED
	FINISH & SPEC. NO.		FINAL APPROVAL
			AMB RB MS-906 C
			ELEC. DES. APP. MECH. DES. APP.

MS-908 A

A - 9/64 (.140) DIA. 7 HOLES REQ.  
 B - 1/4 (.250) " 2 " "



NOTICE TO PERSONS RECEIVING THIS DRAWING

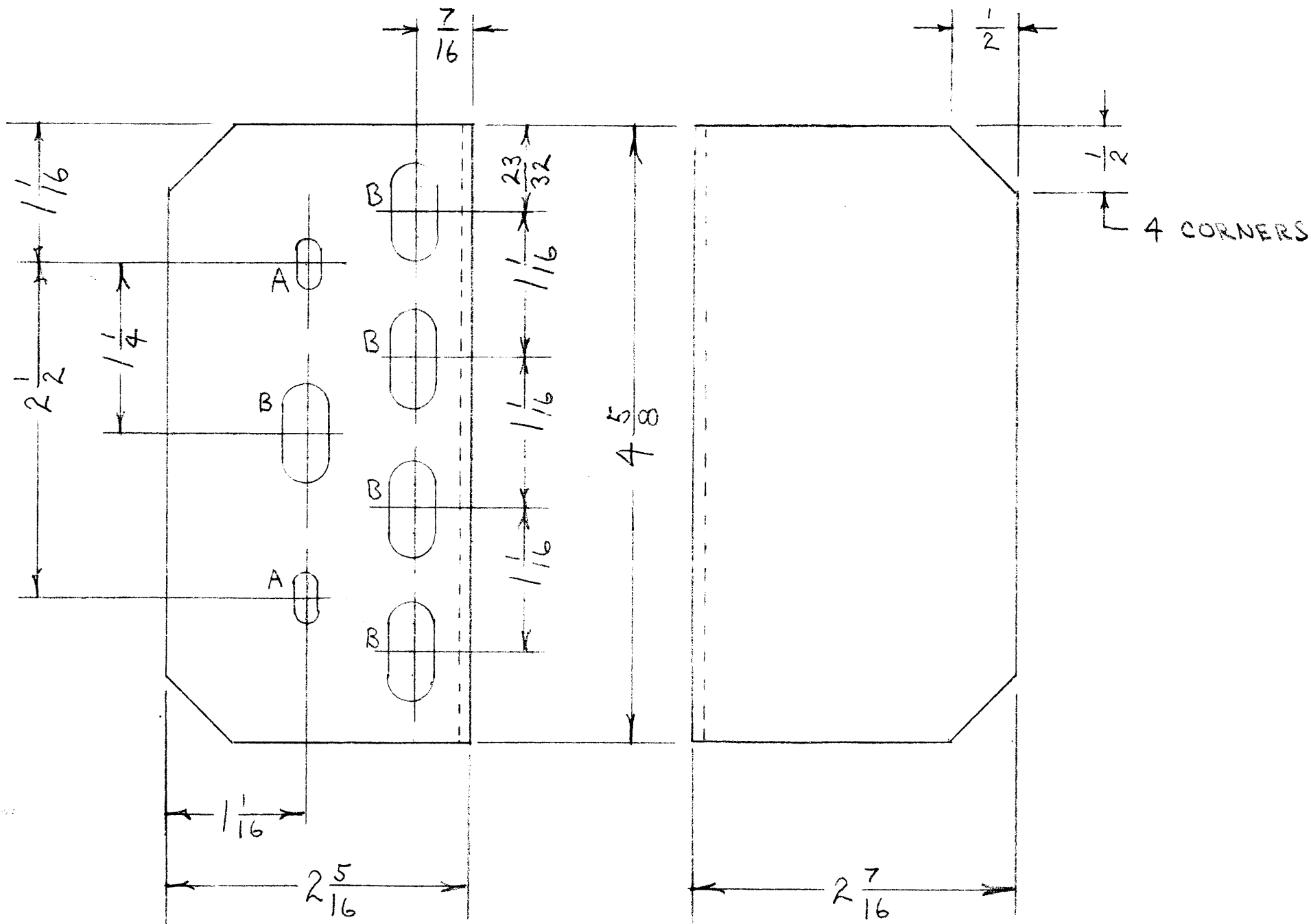
THE TECHNICAL MATERIEL CORPORATION claims proprietary right in the material disclosed hereon. This drawing is issued in confidence for engineering information only and may not be reproduced or used to manufacture anything shown hereon without permission from THE TECHNICAL MATERIEL CORPORATION to the user. This drawing is loaned for mutual assistance and is subject to recall at any time.

Property of:  
 THE TECHNICAL MATERIEL CORPORATION  
 MAMARONECK, NEW YORK

A	1	S-404 WAS S-101	12/14/59	1001	AB		EMN
ISSUE	ITEM	CHANGED FROM	DATE	CH. NO.	DRAFTS	CHECKER	ENG. APP.
TOLERANCES			SCALE:				
DEC. DIM. ±			MAXIMUM ALLOWABLE TOLERANCES HAVE BEEN DETERMINED AND ANY DEVIATIONS WILL BE CAUSE FOR REJECTION.				
FRAC. DIM. ± 1/64			REMOVE ALL BURRS AND SHARP EDGES				
ANGULAR DIM. ±							

1	FFRD-1,2,3	E-458-P	3-20-56
REQ. PER UNIT	MODEL	PROJECT NO.	ASS'Y. NO.
USED ON			

REQ. ITEM	PART NO.	DESCRIPTION	SYMBOL
	.040	THE TECHNICAL MATERIEL CORP.	
	STOCK SIZE	MAMARONECK, NEW YORK	
	ALUMINUM	BRACKET	
	MATERIAL	FFRD-1	
52S H32		ADD 3/20/56	
TYPE & TEMPER	HEAT TREAT. SPEC.	DRAWN	CHECKED
S-404 YELLOW IRIDITE		P.L.K.3-27-56	
FINISH & SPEC. NO.	ELEC. DES. APP.	MECH. DES. APP.	
			MS-908 A



A -  $\frac{13}{64} \times \frac{13}{32}$  slot - 2 REQ'D  
 B -  $\frac{3}{8} \times \frac{3}{4}$  slot - 5 REQ'D

4 CORNERS

NOTICE TO PERSONS RECEIVING THIS DRAWING

THE TECHNICAL MATERIEL CORPORATION claims proprietary right in the material disclosed hereon. This drawing is issued in confidence for engineering information only and may not be reproduced or used to manufacture anything shown hereon without permission from THE TECHNICAL MATERIEL CORPORATION to the user. This drawing is loaned for mutual assistance and is subject to recall at any time.

Property of:  
 THE TECHNICAL MATERIEL CORPORATION  
 MAMARONECK, NEW YORK

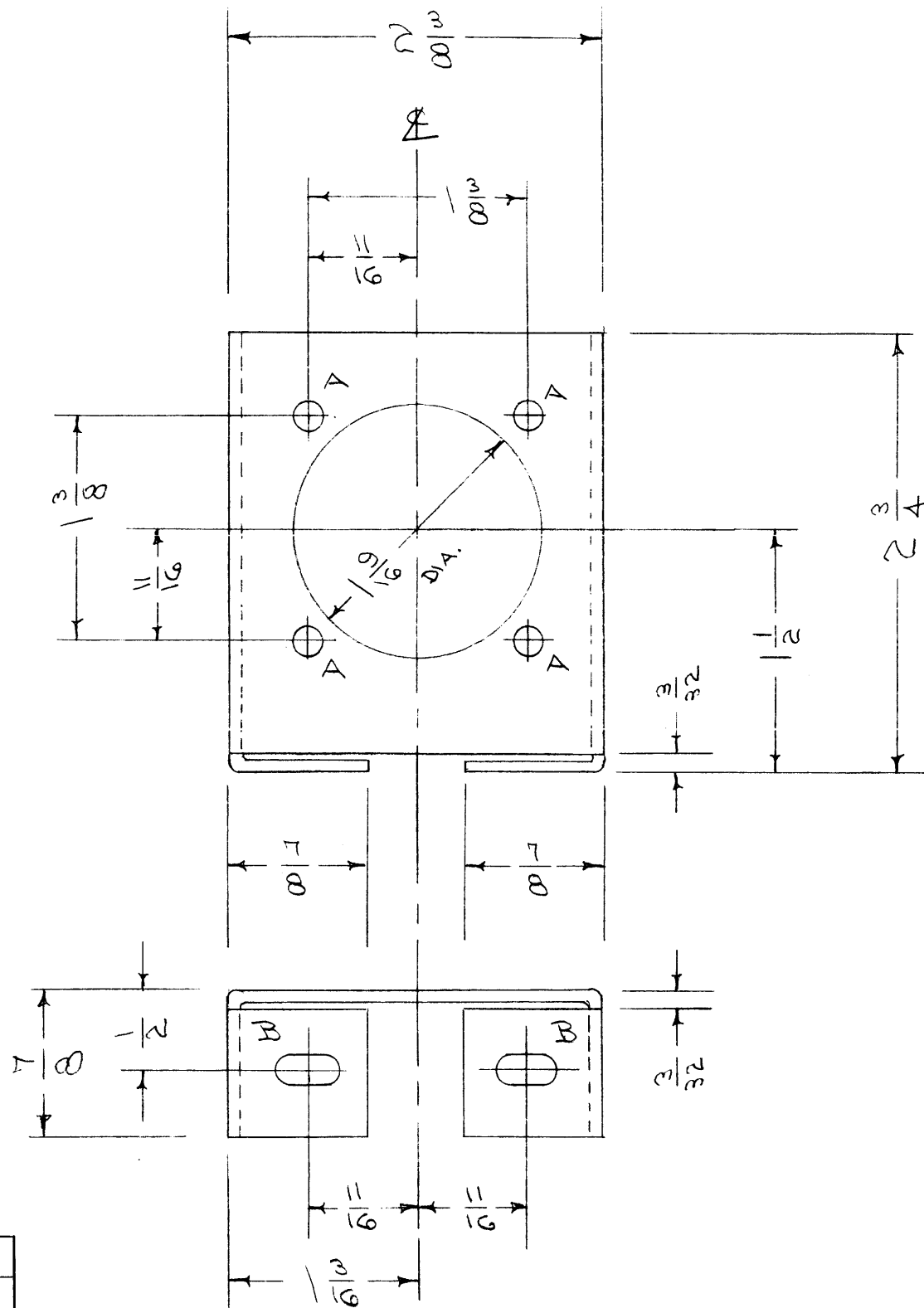
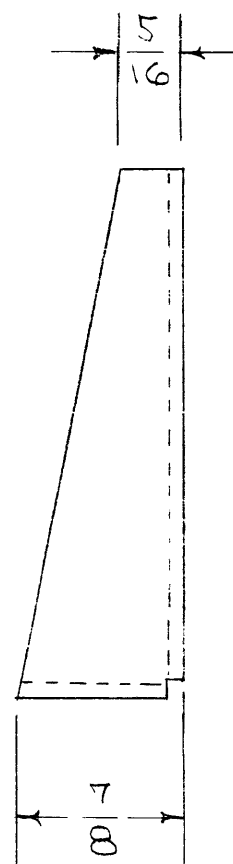
A	1	S-404 WAS S-101	12/14/59	1001	AB		EMN
ISSUE	ITEM	CHANGED FROM	DATE	CH. NO.	DRAFTS	CHECKER	ENG. APP.
TOLERANCES		SCALE:					
DEC. DIM. $\pm$		MAXIMUM ALLOWABLE TOLERANCES HAVE BEEN DETERMINED AND ANY DEVIATIONS WILL BE CAUSE FOR REJECTION.					
FRAC. DIM. $\pm$		REMOVE ALL BURRS AND SHARP EDGES					
ANGULAR DIM. $\pm$							

	RTP				4-5-56
REQ. PER UNIT	MODEL	PROJECT NO.	ASS'Y. NO.	DATE	
USED ON					

REQ. ITEM	PART NO.	DESCRIPTION			SYMBOL
	.081	THE TECHNICAL MATERIEL CORP.			
	STOCK SIZE	MAMARONECK, NEW YORK			
	ALUM.	COVER, RESISTOR			
	MATERIAL				
	S2S-432				
	TYPE & TEMPER	HEAT TREAT. SPEC.	DRAWN	CHECKED	FINAL APPROVAL
	S-404 YELLOW IRIDITE				
	FINISH & SPEC. NO.	ELEC. DES. APP.	MECH. DES. APP.		
				MS-919	A



MS-927  
A



A - 1/64 (.171) DIA      4 HOLES REQ.  
B - 1/64 x 1/32            2 SLOTS "

NOTICE TO PERSONS RECEIVING THIS DRAWING

THE TECHNICAL MATERIEL CORPORATION claims proprietary right in the material disclosed hereon. This drawing is issued in confidence for engineering information only and may not be reproduced or used to manufacture anything shown hereon without permission from THE TECHNICAL MATERIEL CORPORATION to the user. This drawing is loaned for mutual assistance and is subject to recall at any time.

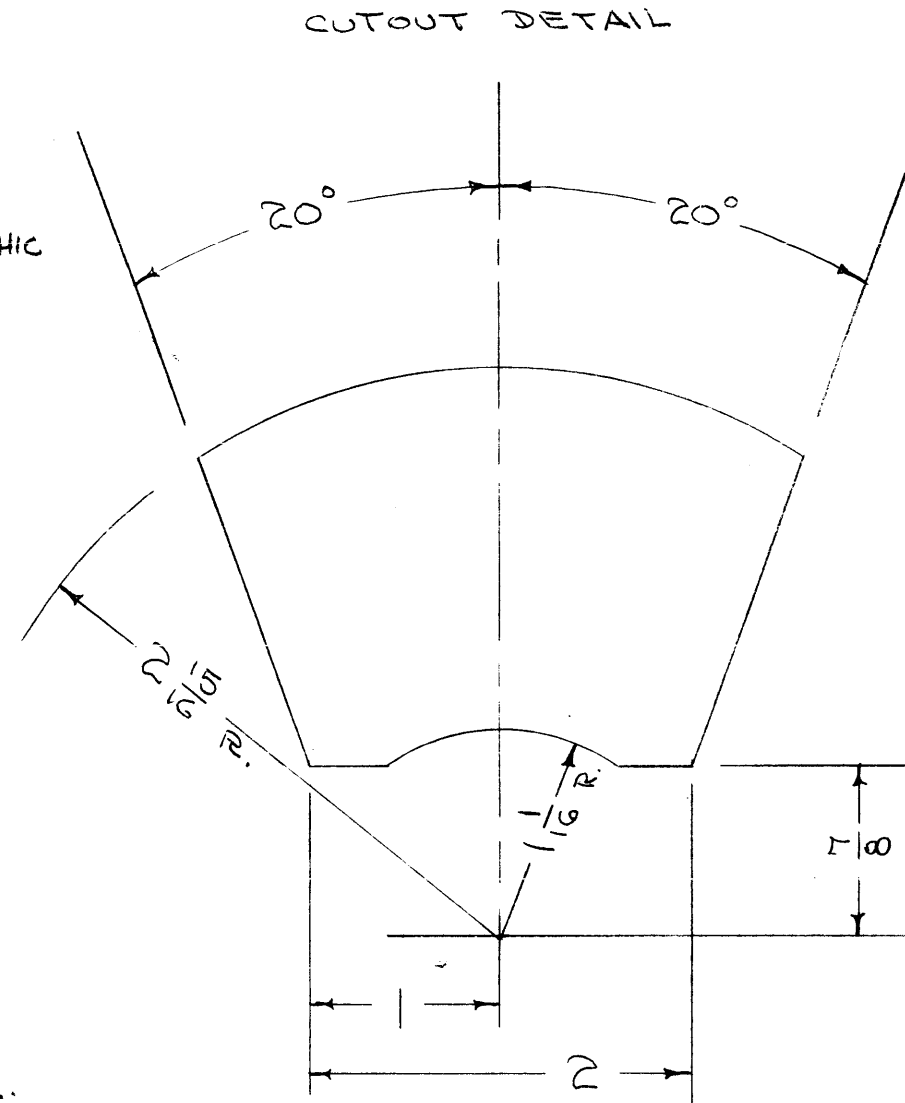
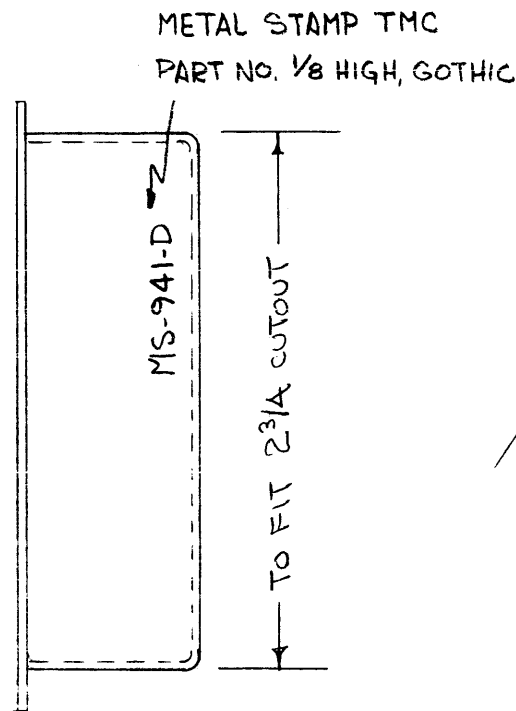
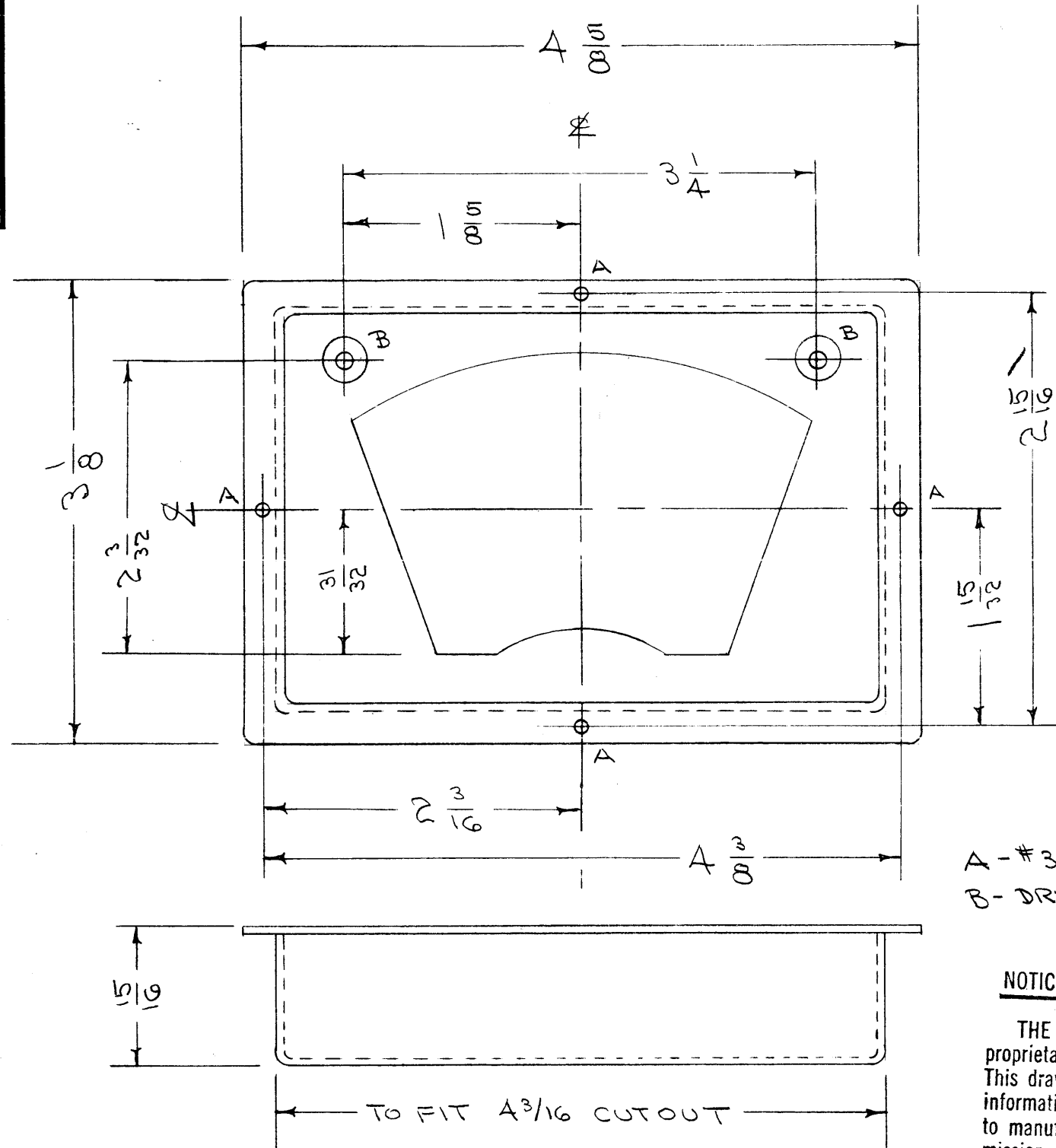
Property of:  
THE TECHNICAL MATERIEL CORPORATION  
MAMARONECK, NEW YORK

A	1	S-404 WAS S-101	12/19/59	1001	AB		EMN
ISSUE	ITEM	CHANGED FROM	DATE	CH. NO.	DRAFTS	CHECKER	ENG. APP.
TOLERANCES		SCALE:					
DEC. DIM. ±		MAXIMUM ALLOWABLE TOLERANCES HAVE BEEN DETERMINED AND ANY DEVIATIONS WILL BE CAUSE FOR REJECTION.					
FRAC. DIM. ± 1/64		REMOVE ALL BURRS AND SHARP EDGES					
ANGULAR DIM. ±							

1	A 959	E-500-P	4-20-56
REQ. PER UNIT	MODEL	PROJECT NO.	ASS'Y. NO.
USED ON			

REQ. ITEM	PART NO.	DESCRIPTION			SYMBOL
	.064	THE TECHNICAL MATERIEL CORP.			
	STOCK SIZE	MAMARONECK, NEW YORK			
	ALUMINUM	BRACKET, CONNECTOR			
MATERIAL					
5052 H32		500420/56			
TYPE & TEMPER	HEAT TREAT. SPEC.	DRAWN	CHECKED	FINAL APPROVAL	
S-404 YELLOW IRIDITE					
FINISH & SPEC. NO.		ELEC. DES. APP.	MECH. DES. APP.	MS-927	A

MS-941-D



A - #38(.101) DIA. A REQ.  
 B - DRILL & CSINK #A FHS - 2 REQ.

**NOTICE TO PERSONS RECEIVING THIS DRAWING**

THE TECHNICAL MATERIEL CORPORATION claims proprietary right in the material disclosed hereon. This drawing is issued in confidence for engineering information only and may not be reproduced or used to manufacture anything shown hereon without permission from THE TECHNICAL MATERIEL CORPORATION to the user. This drawing is loaned for mutual assistance and is subject to recall at any time.

Property of:

THE TECHNICAL MATERIEL CORPORATION  
 MAMARONECK, NEW YORK

TMC PART NO.	FINISH
MS-941-1	S404 YELLOW IRIDITE S114 ZINC CHROMATE PRIMER S520 RCAF VINYL TEXTURED
MS-941-2	S404 YELLOW IRIDITE S114 ZINC CHROMATE PRIMER LUSTERLESS BLACK FED. STD #595 TYPE 37038.

ISSUE	ITEM	CHANGED FROM	DATE	CH. NO.	DRAFTS	CHECKER	ENG. APP.
D	1	MS-941-1, FINISH S520 WAS S-220 RCAF GREY ENAMEL	2-19-63	8301	<i>[Signature]</i>	<i>[Signature]</i>	<i>[Signature]</i>
C	1	FINISH CHART ADDED	10-31-62	7598	<i>[Signature]</i>	<i>[Signature]</i>	<i>[Signature]</i>
B	1	S-404 WAS S-101	12/14/59	1001	<i>[Signature]</i>	<i>[Signature]</i>	EMN
A	1	"B" HOLE DIMENSIONING CHANGED	8/14/62	1	<i>[Signature]</i>	<i>[Signature]</i>	<i>[Signature]</i>

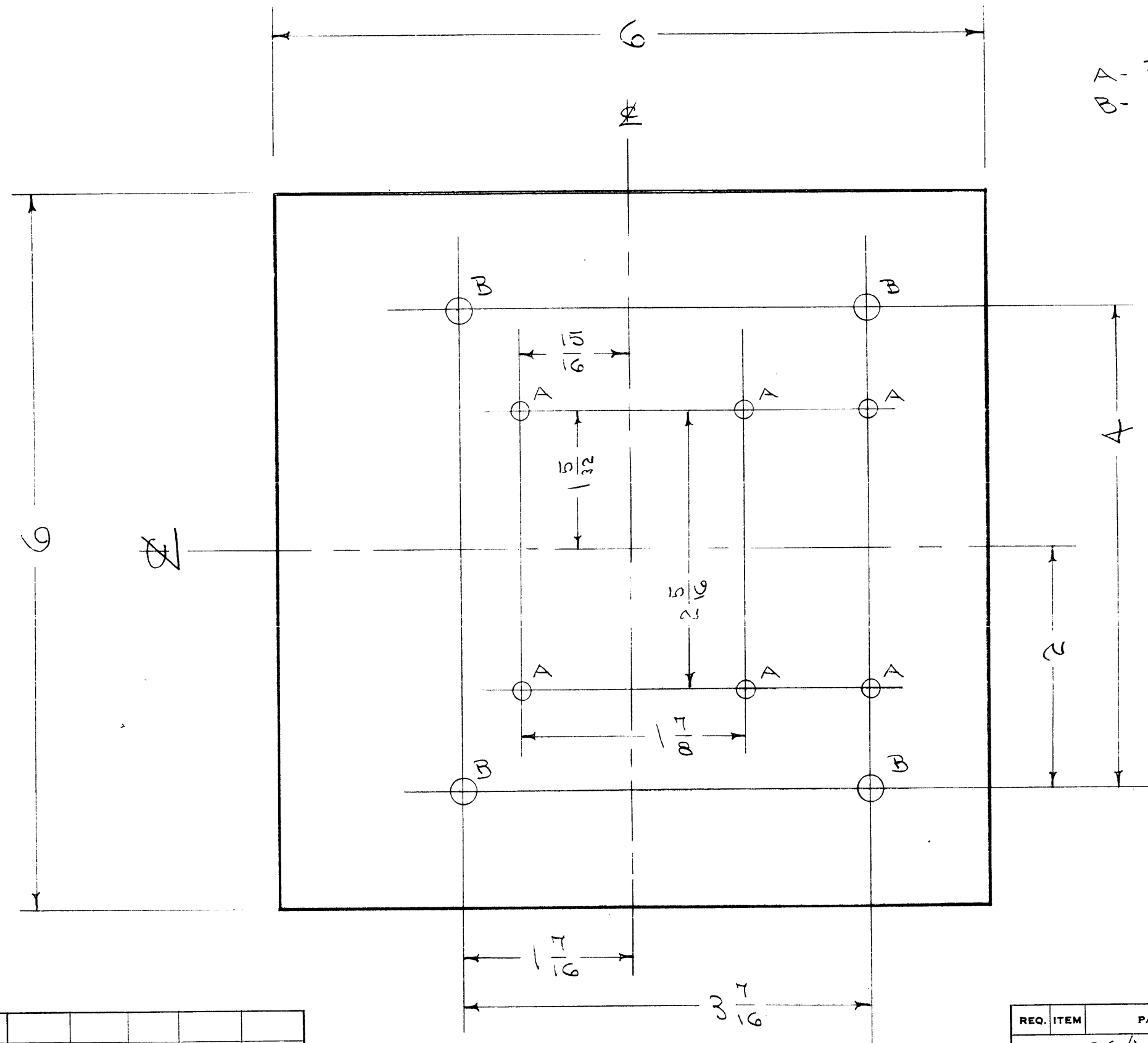
REQ. PER UNIT	MODEL	TMC PART NO.	ASS'Y. NO.	DATE
2	GPR-92	MS-941-2		10-29-62
1	CHG-1	MS-941-1	Ref. LD-874 (1)	11-29-60
1	SBE-3	MS-941-1		11-30-59
1	GSR-1	MS-941-1		5-17-56

REQ. ITEM	PART NO.	DESCRIPTION	SYMBOL
	.064	STOCK SIZE	
	ALUMINUM	MATERIAL	
		THE TECHNICAL MATERIEL CORP. MAMARONECK, NEW YORK	
		ESCUTCHEON, FRONT PANEL	
		TYPE & TEMPER HEAT TREAT. SPEC.	
	SEE NOTE	DRAWN	
		CHECKED	
		FINISH & SPEC. NO.	
		ELEC. DES. APP.	
		Mech. DES. APP.	

USED ON

MS-941-D

MS-934 A



A- 3/16 (.187) DIA.  
 B- 7/32 (.218) " .  
 6 HOLES REQ.  
 4 " "

NOTICE TO PERSONS RECEIVING THIS DRAWING

THE TECHNICAL MATERIEL CORPORATION claims proprietary right in the material disclosed hereon. This drawing is issued in confidence for engineering information only and may not be reproduced or used to manufacture anything shown hereon without permission from THE TECHNICAL MATERIEL CORPORATION to the user. This drawing is loaned for mutual assistance and is subject to recall at any time.

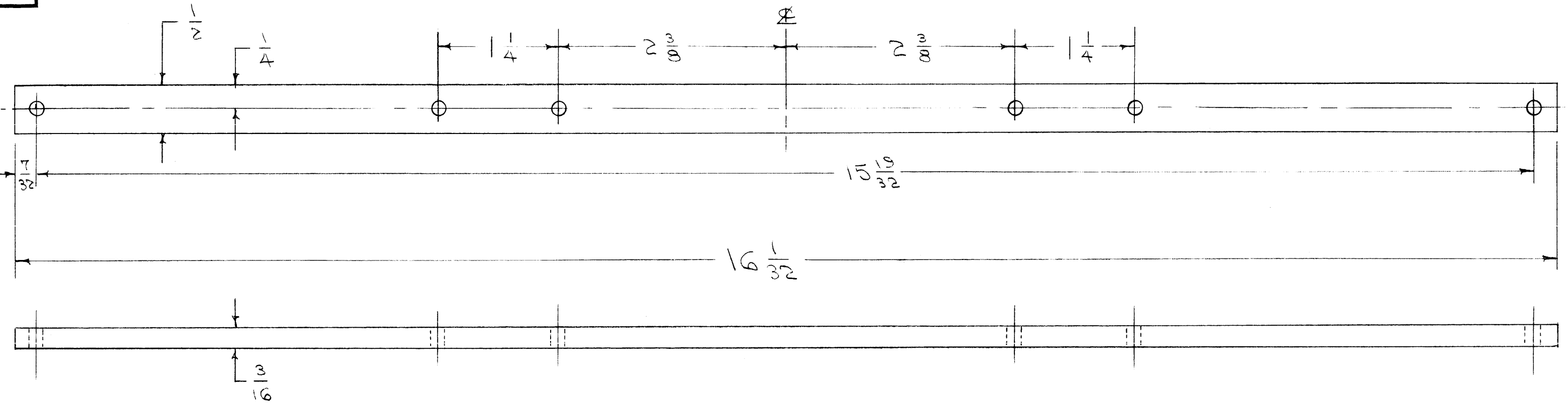
Property of:  
 THE TECHNICAL MATERIEL CORPORATION  
 MAMARONECK, NEW YORK

ISSUE	ITEM	CHANGED FROM	DATE	CH. NO.	DRAFTS	CHECKER	ENG. APP.
A	1	S-404 WAS S-101	12/14/59	1001	AB		EMN
TOLERANCES		SCALE:					
DEC. DIM. ±		MAXIMUM ALLOWABLE TOLERANCES HAVE BEEN DETERMINED AND ANY DEVIATIONS WILL BE CAUSE FOR REJECTION.					
FRAC. DIM. ± 1/64		REMOVE ALL BURRS AND SHARP EDGES					
ANGULAR DIM. ±							

REQ. PER UNIT	MODEL	PROJECT NO.	ASS'Y. NO.	DATE
1	TRC-100	A80	A-1293	5-9-56
USED ON				

REQ. ITEM	PART NO.	DESCRIPTION	SYMBOL
	.064	THE TECHNICAL MATERIEL CORP.	
	STOCK SIZE	MAMARONECK, NEW YORK	
	ALUMINUM	MOUNTING PLATE	
	MATERIAL	TRC-100	
5052 H32		CDD 5/9/56	ARB
TYPE & TEMPER	HEAT TREAT. SPEC.	DRAWN	CHECKED
5-404 YELLOW IRIDITE		ARB	WJC
FINISH & SPEC. NO.	ELEC. DES. APP.	MECH. DES. APP.	
			MS-934 A

MS-957  
A



**NOTICE TO PERSONS RECEIVING THIS DRAWING**  
 THE TECHNICAL MATERIEL CORPORATION claims proprietary right in the material disclosed hereon. This drawing is issued in confidence for engineering information only and may not be reproduced or used to manufacture anything shown hereon without permission from THE TECHNICAL MATERIEL CORPORATION to the user. This drawing is loaned for mutual assistance and is subject to recall at any time.

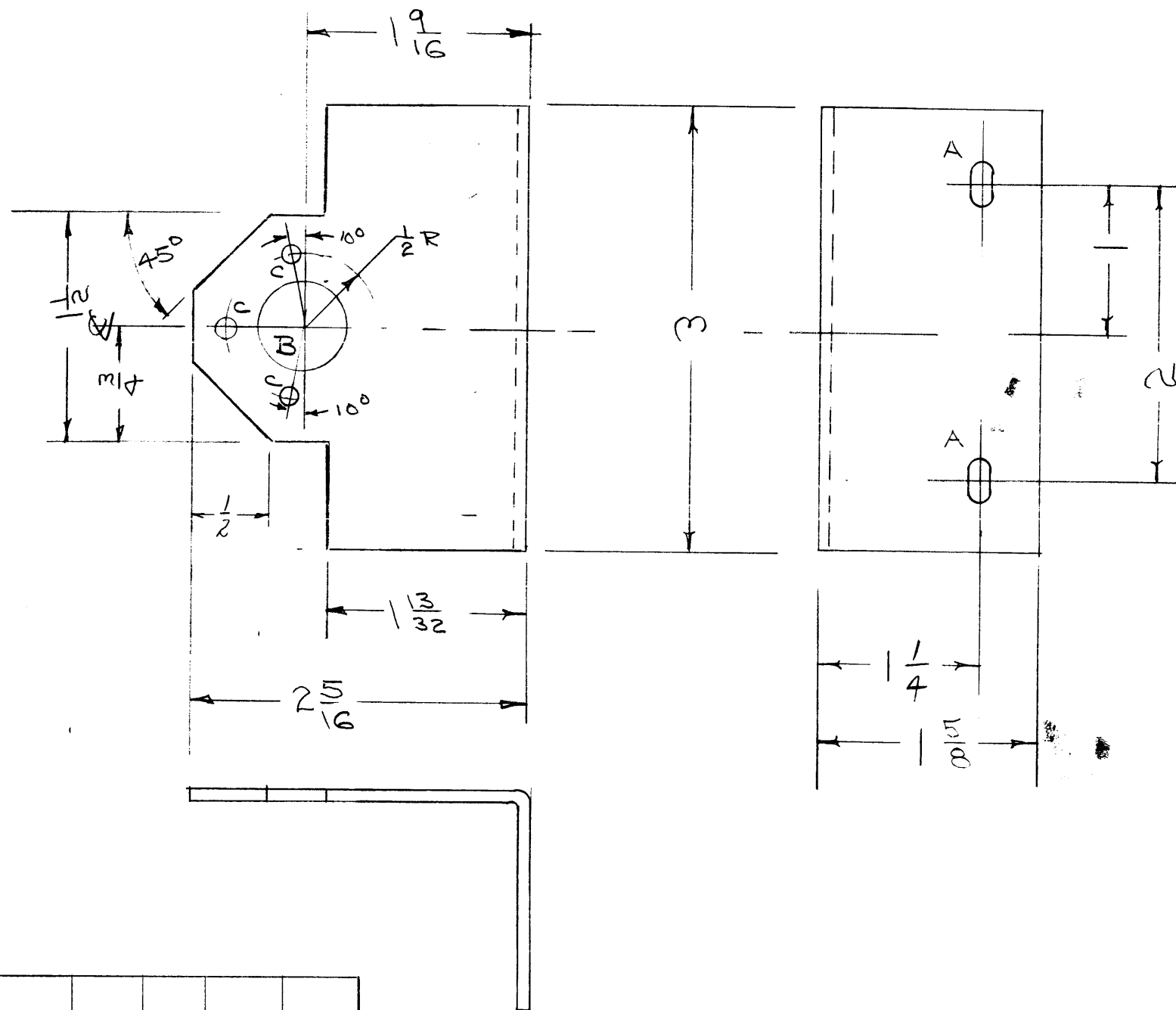
HOLES - 5/32 (.156) DIA.  
6 REQ'D.

Property of:  
**THE TECHNICAL MATERIEL CORPORATION**  
 MAMARONECK, NEW YORK

A	1	S-404 WAS S-101	12/14/59	1001	MS		EMN
ISSUE	ITEM	CHANGED FROM	DATE	CH. NO.	DRAFTS	CHECKER	ENG. APP.
TOLERANCES			SCALE:				
DEC. DIM. ±			MAXIMUM ALLOWABLE TOLERANCES HAVE BEEN DETERMINED AND ANY DEVIATIONS WILL BE CAUSE FOR REJECTION.				
FRAC. DIM. ± 1/64			REMOVE ALL BURRS AND SHARP EDGES				
ANGULAR DIM. ±							

4	TER-500	529	8-20-56
REQ. PER UNIT	MODEL	PROJECT NO.	ASS'Y. NO.
USED ON			

REQ. ITEM	PART NO.	DESCRIPTION		SYMBOL
	3/16 X 1/2 BAR	THE TECHNICAL MATERIEL CORP.		
	STOCK SIZE	MAMARONECK, NEW YORK		
	ALUMINUM	BRACKET, RESISTOR		
	MATERIAL	INSULATOR		TER-500
3052 H32		8/20/56	JAD	MS
TYPE & TEMPER	HEAT TREAT. SPEC.	DRAWN	CHECKED	FINAL APPROVAL
S-404 YELLOW IRIDITE		MS	MS	MS-957 A
FINISH & SPEC. NO.		ELEC. DES. APP.	MECH. DES. APP.	



A - 5/32 x 5/16      2 SLOTS REQ.  
 B - 5/8 (.625) DIA.      1 HOLE "  
 C 1/64 D      3 " "

NOTICE TO PERSONS RECEIVING THIS DRAWING

THE TECHNICAL MATERIEL CORPORATION claims proprietary right in the material disclosed herein. This drawing is issued in confidence for engineering information only and may not be reproduced or used to manufacture anything shown hereon without permission from THE TECHNICAL MATERIEL CORPORATION to the user. This drawing is loaned for mutual assistance and is subject to recall at any time.

Property of:

THE TECHNICAL MATERIEL CORPORATION  
 MAMARONECK, NEW YORK

ISSUE	ITEM	CHANGED FROM	DATE	CH. NO.	DRAFTS	CHECKER	ENG. APP.
B	1	S-404 WAS S-101	12/14/59	1001	RTF		EMN
A	1	COMPLETELY REVISED	5/9/58	1	JAS		

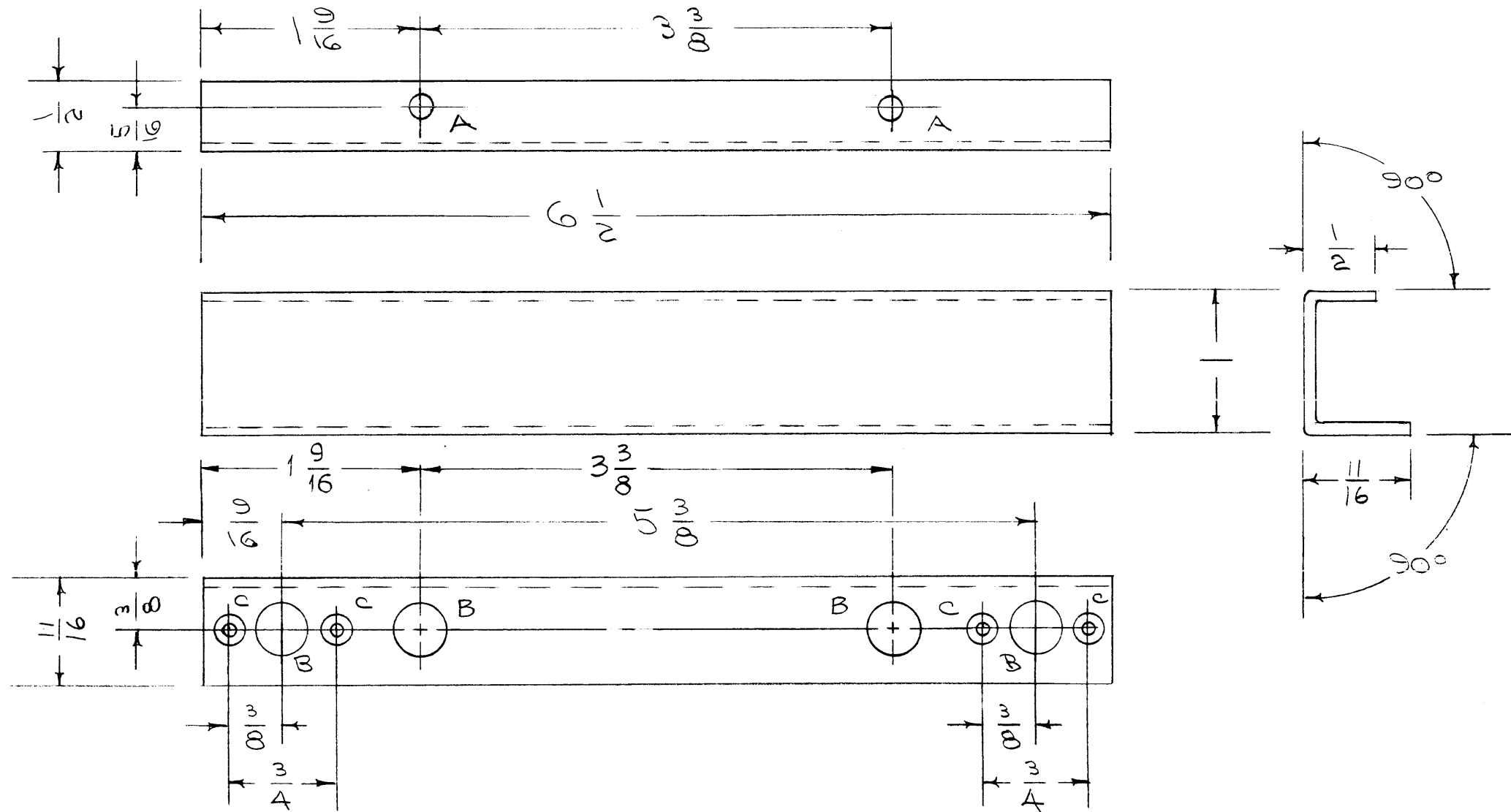
TOLERANCES		SCALE:	
DEC. DIM. ±		MAXIMUM ALLOWABLE TOLERANCES HAVE BEEN DETERMINED AND ANY DEVIATIONS WILL BE CAUSE FOR REJECTION.	
FRAC. DIM. ± 1/64		REMOVE ALL BURRS AND SHARP EDGES	
ANGULAR DIM. ±			

1	RTF	444		B-30-16
REQ. PER UNIT	MODEL	PROJECT NO.	ASS'Y. NO.	DATE
USED ON				

REQ. ITEM	PART NO.	DESCRIPTION		SYMBOL
	.064	THE TECHNICAL MATERIEL CORP.		
	STOCK SIZE	MAMARONECK. NEW YORK		
	ALUMINUM	BRACKET, COND. REAR		
	MATERIAL	P/A	RTF	
5052 H32		CDR 8/20/56	JAS	
TYPE & TEMPER	HEAT TREAT. SPEC.	DRAWN	CHECKED	FINAL APPROVAL
S-404 YELLOW IRIDITE				
FINISH & SPEC. NO.	ELEC. DES. APP.	MECH. DES. APP.		
				MS-960 B

MS-970 C

A - 3/16 (.187) DIA.      2 HOLES REQ.  
 B - 3/8 (.375) DIA.      4 HOLES "  
 C - DRILL & C'SINK      4 " "



ALL PERSONS RECEIVING THIS DRAWING  
 THE TECHNICAL MATERIEL CORPORATION claims  
 proprietary right in the material disclosed herein.  
 This drawing is issued in confidence for engineering  
 information only and may not be reproduced or used  
 to manufacture anything shown hereon without per-  
 mission from THE TECHNICAL MATERIEL CORPORA-  
 TION to the user. This drawing is loaned for mutual  
 assistance and is subject to recall at any time.

Property of:  
 THE TECHNICAL MATERIEL CORPORATION  
 MAMARONECK, NEW YORK

ISSUE	ITEM	CHANGED FROM	DATE	CH. NO.	DRAFTS	CHECKER	ENG. APP.
C	1	2 "B" Holes Added	9-6-60	2923	J.C.B.	<i>[Signature]</i>	
B	1	S-404 WAS S-101	12/14/59	1001	MS	<i>[Signature]</i>	EMN
A	1	"A" HOLES WERE 5/32 X 5/16 SLOTS	9/21/56	1	file	<i>[Signature]</i>	<i>[Signature]</i>

TOLERANCES		SCALE:	
DEC. DIM. ±		MAXIMUM ALLOWABLE TOLERANCES HAVE BEEN DETERMINED AND ANY DEVIATIONS WILL BE CAUSE FOR REJECTION.	
FRAC. DIM. ± 1/64		REMOVE ALL BURRS AND SHARP EDGES	
ANGULAR DIM. ±			

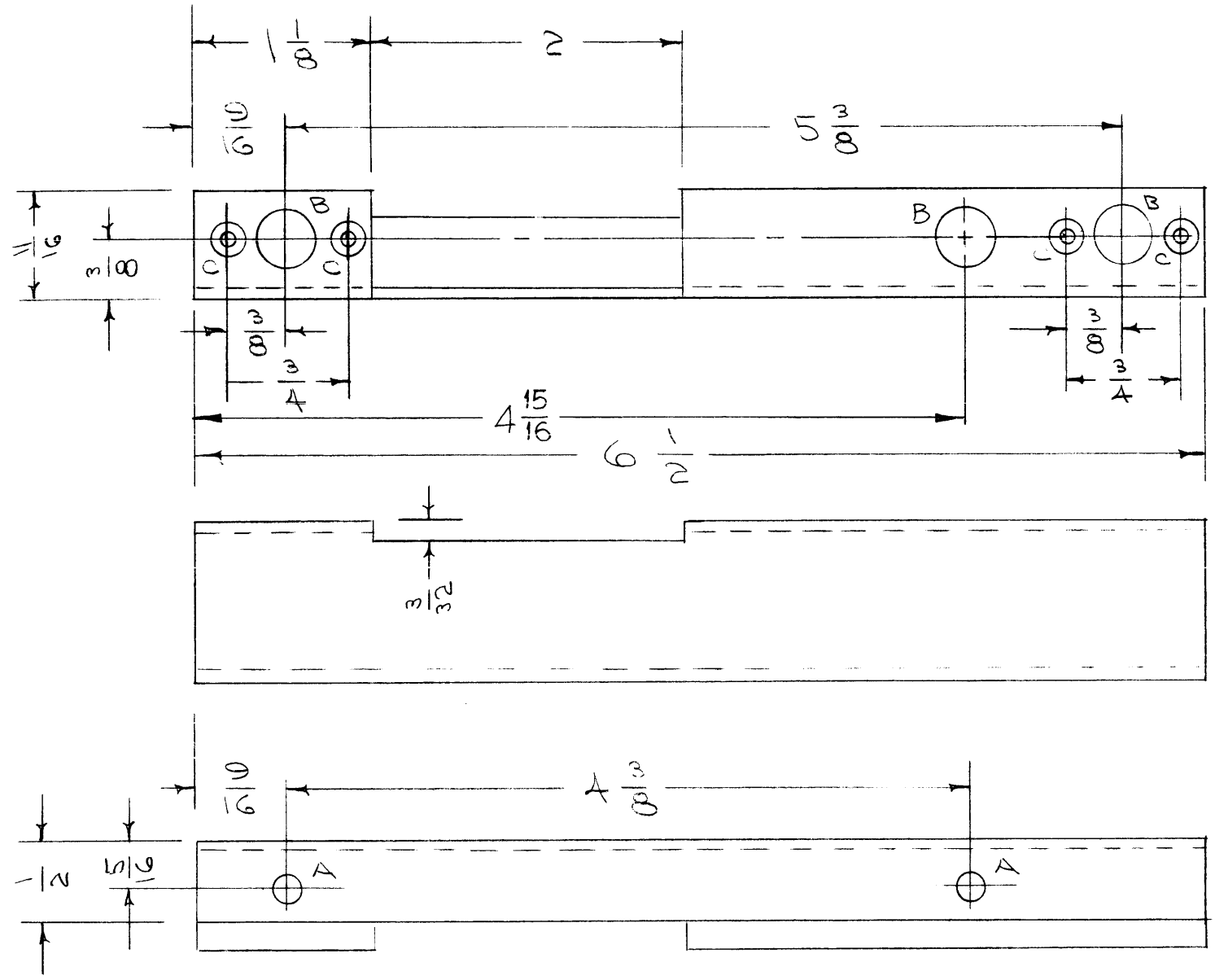
1	RTF-2	MAS/OSC		11-10-58
1	RTF			8-23-56
REQ. PER UNIT	MODEL	PROJECT NO.	ASS'Y. NO.	DATE
	USED ON			

REQ. ITEM	PART NO.	DESCRIPTION	SYMBOL
	.064	STOCK SIZE	
	ALUMINUM	MATERIAL	
	5052 H32	TYPE & TEMPER	
		HEAT TREAT. SPEC.	
		FINISH & SPEC. NO.	

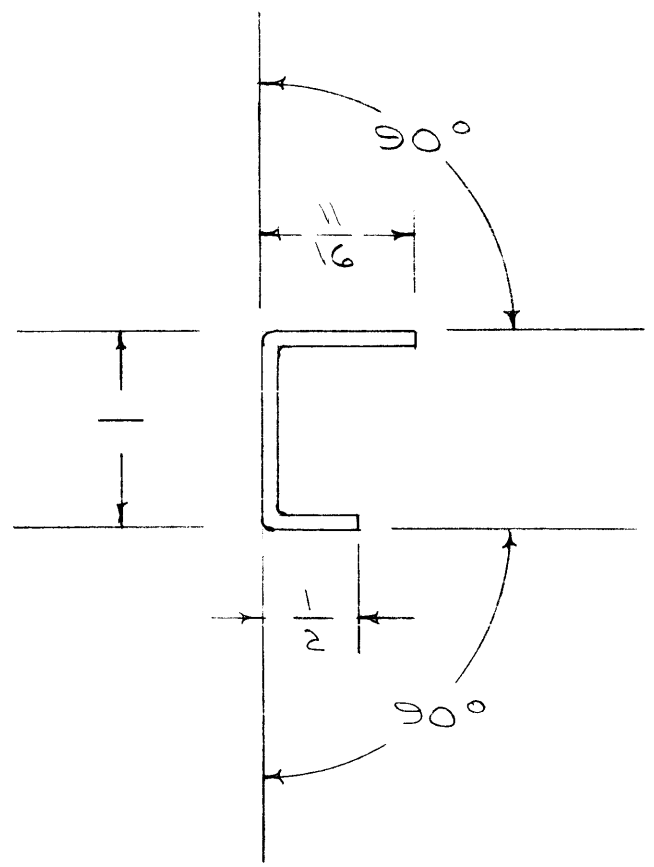
  

THE TECHNICAL MATERIEL CORP. MAMARONECK, NEW YORK		COVER SUPPORT, TOP OVEN		RTF
5052 H32	800 8/23/58	<i>[Signature]</i>	<i>[Signature]</i>	
TYPE & TEMPER	HEAT TREAT. SPEC.	DRAWN	CHECKED	FINAL APPROVAL
S-404 YELLOW IRIDITE		<i>[Signature]</i>	<i>[Signature]</i>	MS-970 C
FINISH & SPEC. NO.	ELEC. DES. APP.	MECH. DES. APP.		

MS-971 B



A - 3/16 (.1875) DIA. 2 HOLES REQ.  
 B - 3/8 (.375) " 3 " " "  
 C - DRILL & C'SINK #3 F.H.S. 4 " " "



This drawing is for information only and may not be used or used to manufacture anything shown herein without permission from THE TECHNICAL MATERIEL CORPORATION to the user. This drawing is loaned for mutual assistance and is subject to recall at any time.

Property of:  
 THE TECHNICAL MATERIEL CORPORATION  
 MAMARONECK, NEW YORK

ISSUE	ITEM	CHANGED FROM	DATE	CH. NO.	DRAFTS	CHECKER	ENG. APP.
B	1	① "B" Hole Added	9-6-60	2923	J.C.B.		
A	1	S-404 WAS S-101	12/14/59	1001	AB		EMN

TOLERANCES: DEC. DIM. ±, FRAC. DIM. ± 1/64, ANGULAR DIM. ±

SCALE: MAXIMUM ALLOWABLE TOLERANCES HAVE BEEN DETERMINED AND ANY DEVIATIONS WILL BE CAUSE FOR REJECTION. REMOVE ALL BURRS AND SHARP EDGES

REQ. PER UNIT	MODEL	PROJECT NO.	ASS'Y. NO.	DATE
1	RTF-2	MAS/ESC		11-10-58
1	RTF			8-23-56

USED ON

REQ. ITEM	PART NO.	DESCRIPTION	SYMBOL
.064		STOCK SIZE	
ALUMINUM		MATERIAL	
5052 H32		TYPE & TEMPER	
		HEAT TREAT. SPEC.	
		FINISH & SPEC. NO.	

THE TECHNICAL MATERIEL CORP. MAMARONECK, NEW YORK

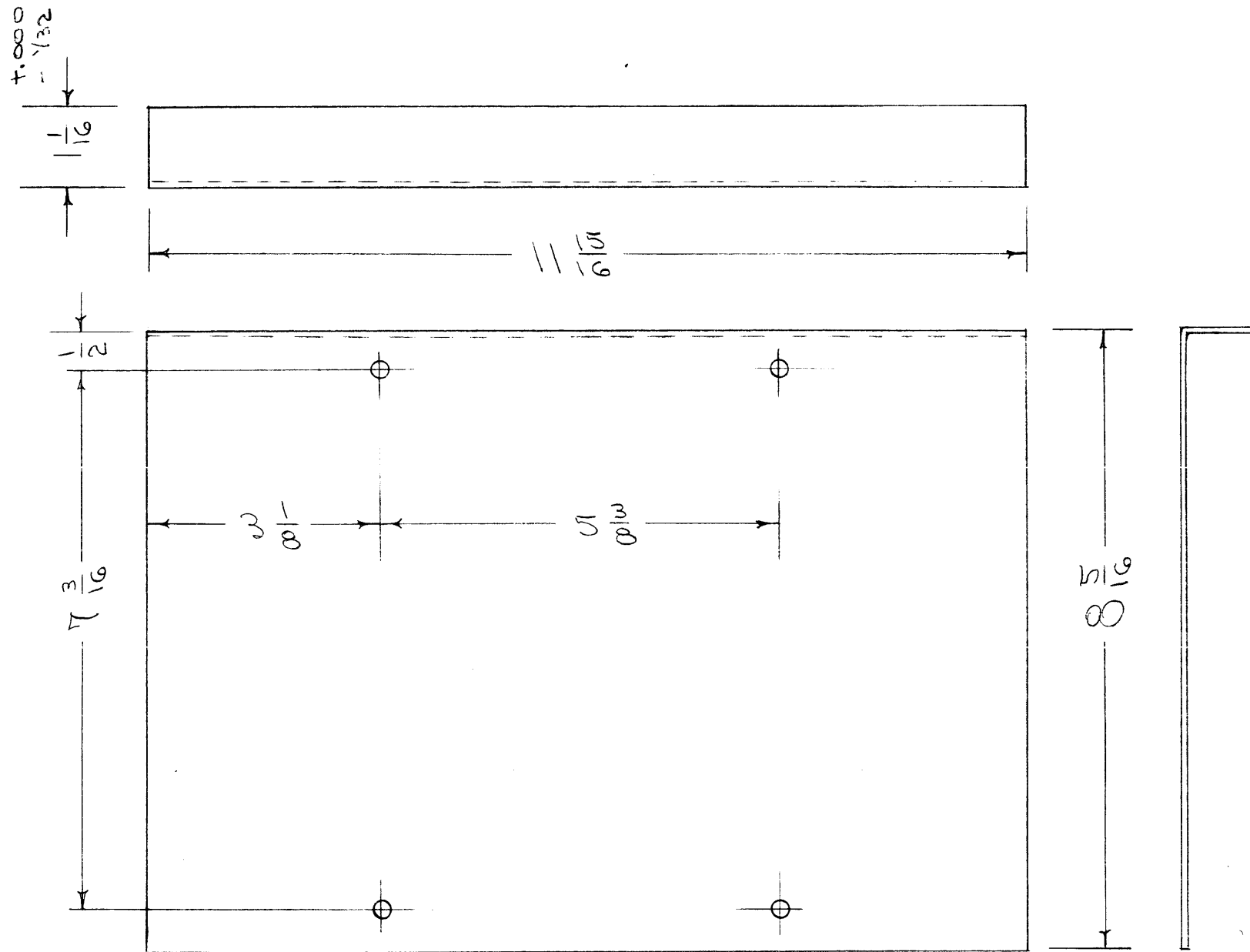
COVER SUPPORT, BOTTOM OVEN RTF

5052 H32

8-23-56

S-404 YELLOW IRIDITE

MS-971 B



HOLES - 1/4 (.250) DIA. A REQ.

PROPERTY OF THE TECHNICAL MATERIEL CORPORATION  
 MAMARONECK, NEW YORK  
 THIS DRAWING IS LOANED FOR MUTUAL ASSISTANCE AND IS SUBJECT TO RECALL AT ANY TIME.

Property of:  
**THE TECHNICAL MATERIEL CORPORATION**  
 MAMARONECK, NEW YORK

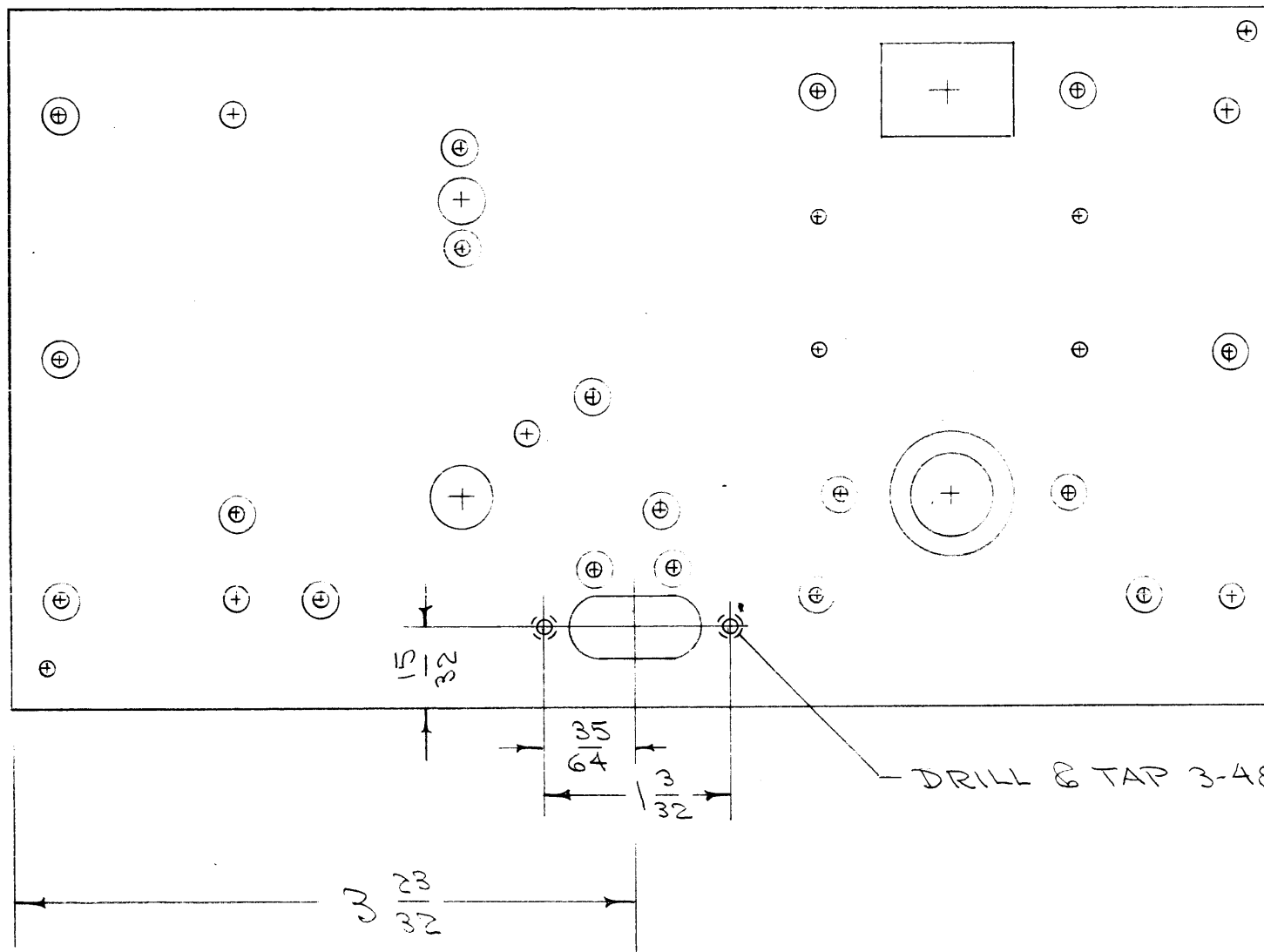
ISSUE	ITEM	CHANGED FROM	DATE	CH. NO.	DRAFTS	CHECKER	ENG. APP.
A	1	S-404 WAS S-101	12/14/59	1001	AB		EMN
TOLERANCES		SCALE:					
DEC. DIM. ±		MAXIMUM ALLOWABLE TOLERANCES HAVE BEEN DETERMINED AND ANY DEVIATIONS WILL BE CAUSE FOR REJECTION.					
FRAC. DIM. ± 1/64		REMOVE ALL BURRS AND SHARP EDGES					
ANGULAR DIM. ±							

1	RTF-2	MAS/BSC		11-10-58
1	RTF			8-23-56
REQ. PER UNIT	MODEL	PROJECT NO.	ASS'Y. NO.	DATE
USED ON				

REQ. ITEM	PART NO.	DESCRIPTION			SYMBOL
	.064	THE TECHNICAL MATERIEL CORP.			
	STOCK SIZE	MAMARONECK, NEW YORK			
	ALUMINUM	SIDE COVER, OVEN			
	MATERIAL	OVEN			RTF
	5052 H32	008/23/56	JAN 60	WJ	
	TYPE & TEMPER	HEAT TREAT. SPEC.	DRAWN	CHECKED	FINAL APPROVAL
	S-404 YELLOW IRIDITE				
	FINISH & SPEC. NO.	ELEC. DES. APP.	MECH. DES. APP.		
					MS-972 A



MS-977



DRILL & TAP 3-48 2 REQ.

MODIFY MS-155 AS ABOVE  
SEE SPEC. S-306

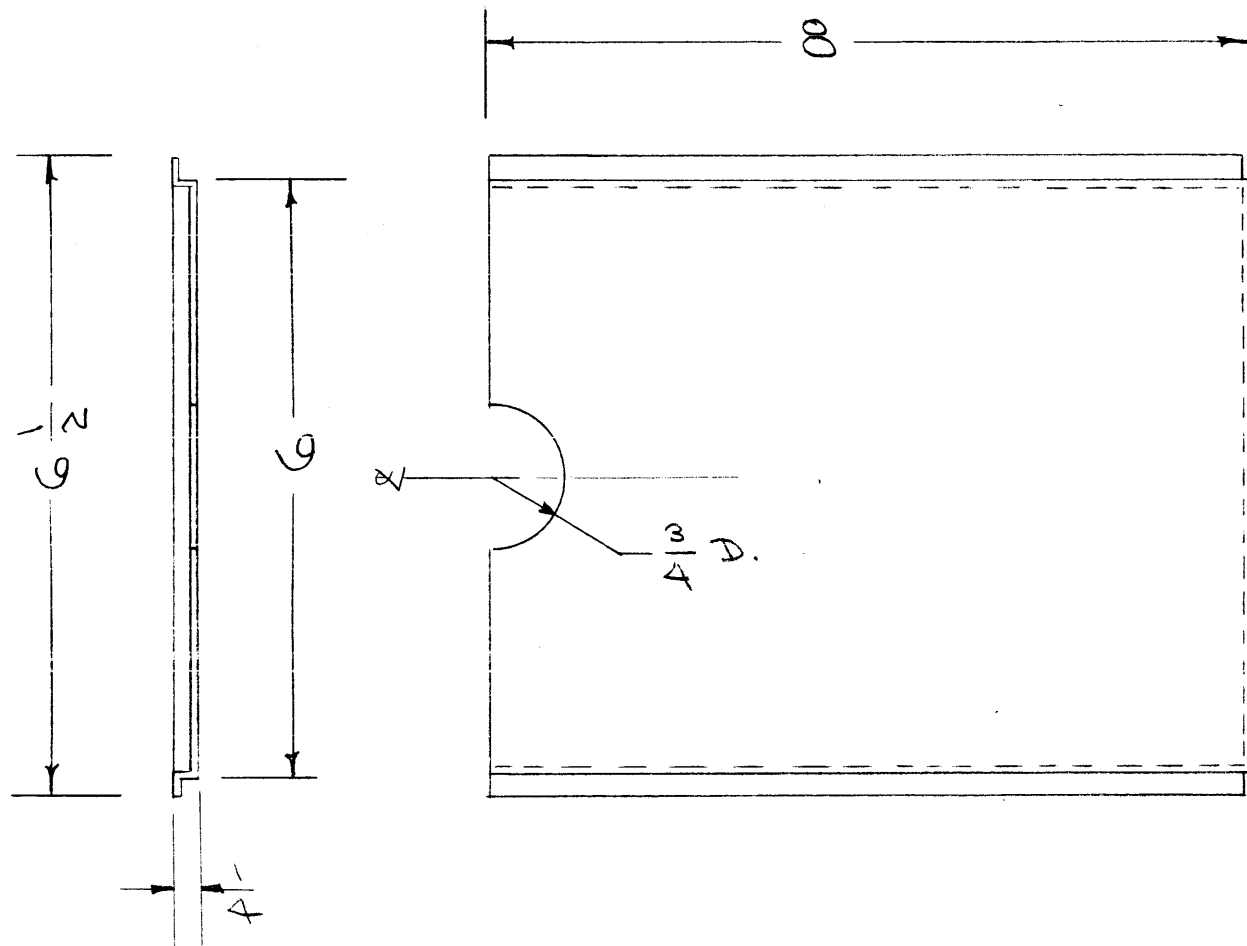
**NOTICE TO PERSONS RECEIVING THIS DRAWING**  
THE TECHNICAL MATERIEL CORPORATION claims proprietary right in the material disclosed hereon. This drawing is issued in confidence for engineering information only and may not be reproduced or used to manufacture anything shown hereon without permission from THE TECHNICAL MATERIEL CORPORATION to the user. This drawing is loaned for mutual assistance and is subject to recall at any time.

Property of:  
THE TECHNICAL MATERIEL CORPORATION  
MAMARONECK, NEW YORK

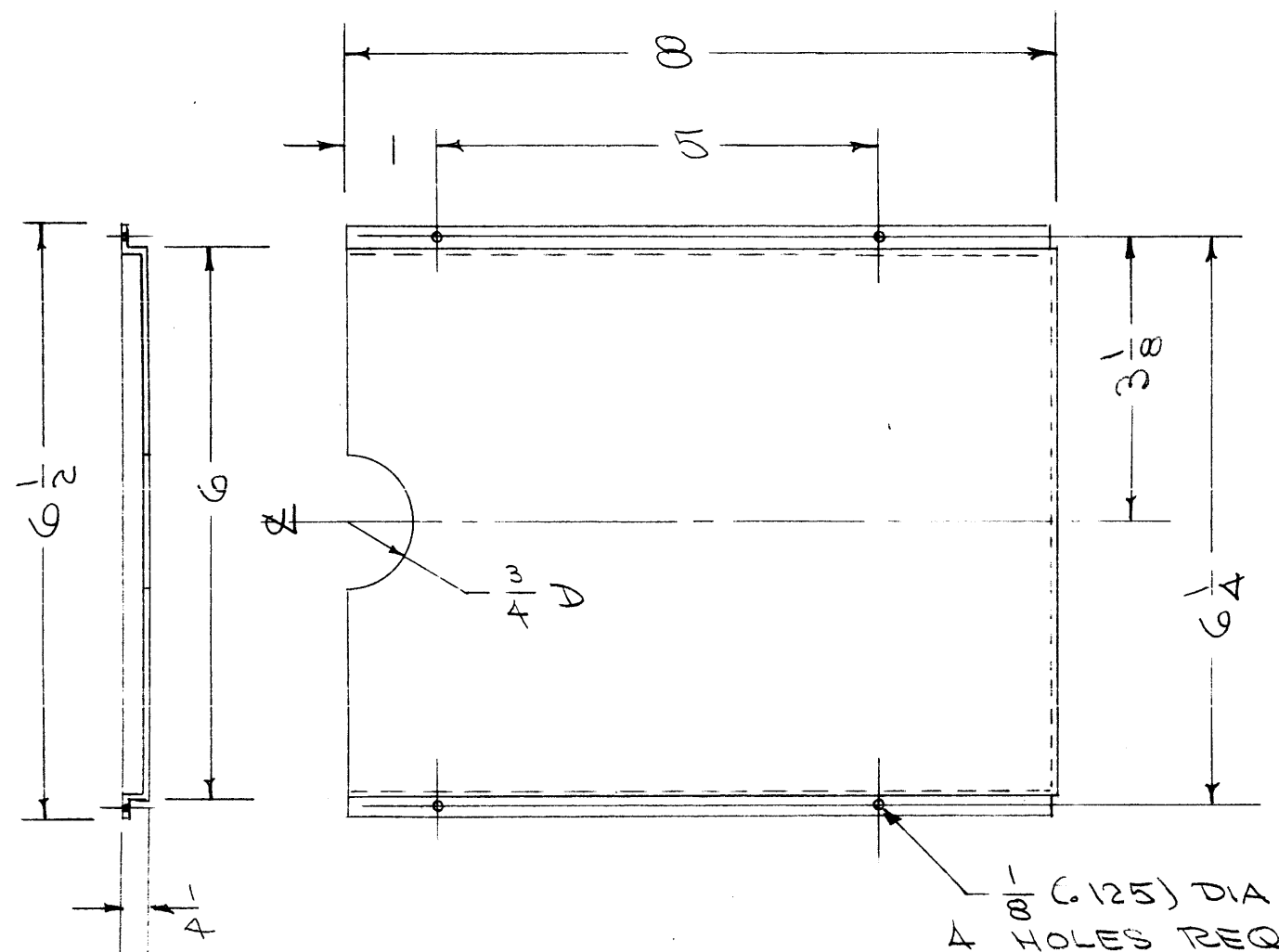
ISSUE	ITEM	CHANGED FROM	DATE	CH. NO.	DRAFTS	CHECKER	ENG. APP.
TOLERANCES			SCALE:				
DEC. DIM. ±			MAXIMUM ALLOWABLE TOLERANCES HAVE BEEN DETERMINED AND ANY DEVIATIONS WILL BE CAUSE FOR REJECTION.				
FRAC. DIM. ±			REMOVE ALL BURRS AND SHARP EDGES				
ANGULAR DIM. ±							

1	FFRD			9-21-56
REQ. PER UNIT	MODEL	PROJECT NO.	ASS'Y. NO.	DATE
USED ON				

REQ. ITEM	PART NO.	DESCRIPTION	SYMBOL
		THE TECHNICAL MATERIEL CORP. MAMARONECK, NEW YORK	
STOCK SIZE		MODIFICATION, FRONT PANEL	
MATERIAL		R.F. HEADS	
		9-21-56	JAL
TYPE & TEMPER	HEAT TREAT. SPEC.	DRAWN	CHECKED
			WPC
FINISH & SPEC. NO.	ELEC. DES. APP.	MECH. DES. APP.	MS-977



MS-991-1 WITHOUT HOLES  
NO FINISH



MS-991-2 WITH HOLES  
FINISH - S-197 SMOOTH BLACK

ALL PERSONS RECEIVING THIS DRAWING  
THE TECHNICAL MATERIEL CORPORATION claims  
Proprietary right in the material disclosed hereon.  
This drawing is issued in confidence for engineering  
information only and may not be reproduced or used  
to manufacture anything shown hereon without per-  
mission from THE TECHNICAL MATERIEL CORPORA-  
TION to the user. This drawing is loaned for mutual  
assistance and is subject to recall at any time.

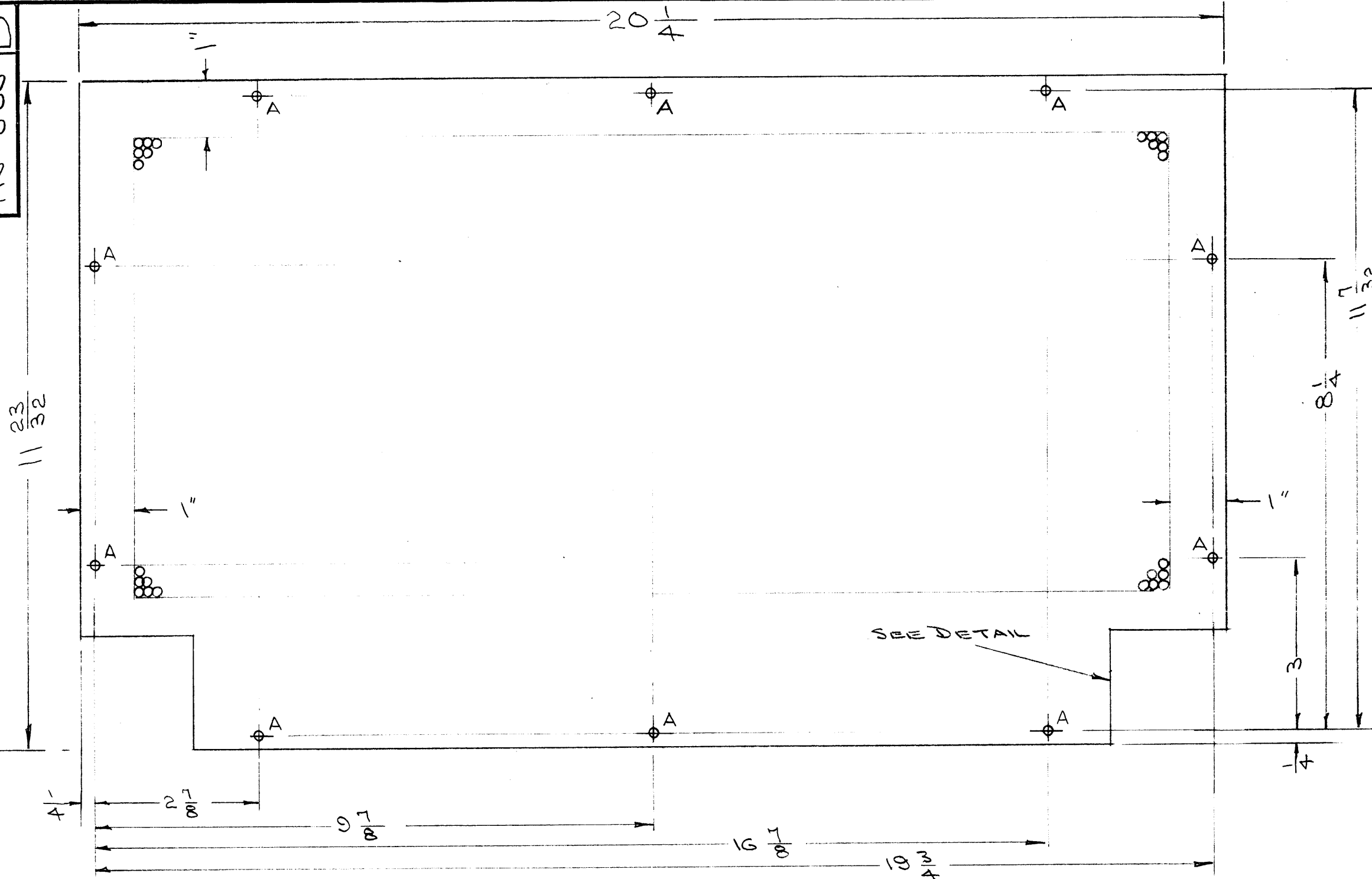
Property of:  
THE TECHNICAL MATERIEL CORPORATION  
MAMARONECK, NEW YORK

ISSUE	ITEM	CHANGED FROM	DATE	CH. NO.	DRAFTS	CHECKER	ENG. APP.
A	1	COMPLETE REVISION	10-18-56	1	CSB	JAC	WJC
TOLERANCES		SCALE:					
DEC. DIM. ±		MAXIMUM ALLOWABLE TOLERANCES HAVE					
FRAC. DIM. ±		BEEN DETERMINED AND ANY DEVIATIONS					
ANGULAR DIM. ±		WILL BE CAUSE FOR REJECTION.					
		REMOVE ALL BURRS AND SHARP EDGES					

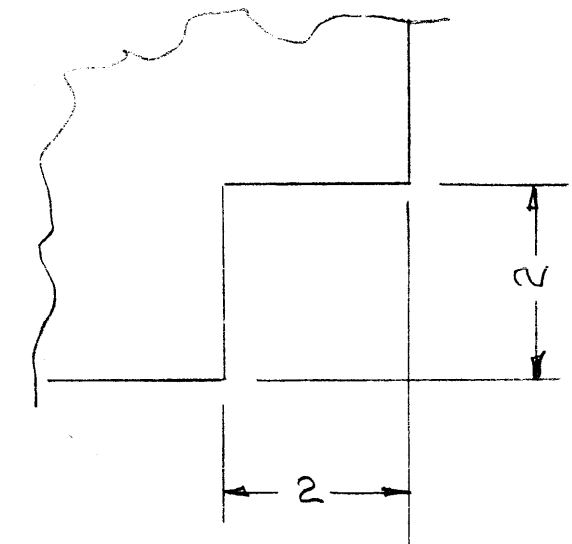
REQ. PER UNIT	MODEL	PROJECT NO.	ASS'Y. NO.	DATE
	TAC-1			10-18-56
USED ON				

REQ. ITEM	PART NO.	DESCRIPTION	SYMBOL
18 GA. (.047)		THE TECHNICAL MATERIEL CORP. MAMARONECK, NEW YORK	
STEEL		CARD HOLDER	
COLD ROLLED			
TYPE & TEMPER	HEAT TREAT. SPEC.	DRAWN	CHECKED
SEE ABOVE			
FINISH & SPEC. NO.	ELEC. DES. APP.	MECH. DES. APP.	
			MS-991 A

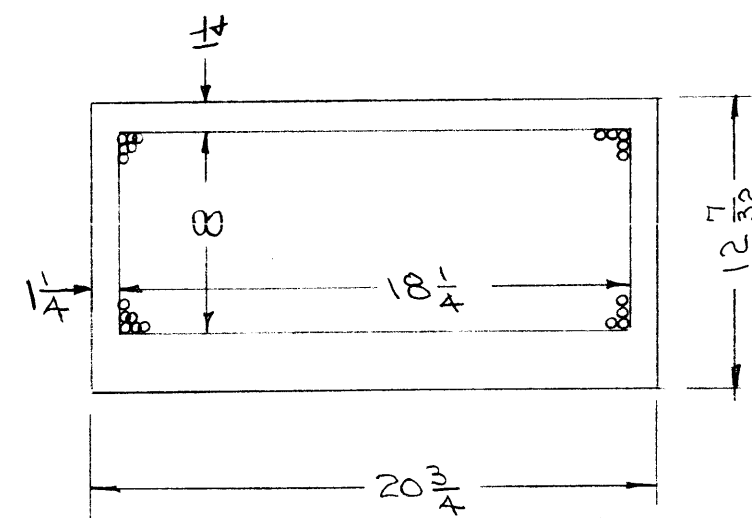
MS-995 B



A- $\frac{3}{16}$  DIA. 10 REQ.



NOTCHING DETAIL  
2 REQ. AS SHOWN



PURCHASED BLANK LAYOUT

PERFORATIONS:

PERFORATED HOLES - STAGGERED .150 DIA. HOLES ON  $\frac{3}{16}$  CENTERS. 33 HOLES PER SQ. IN.

FINISH:

S-404 YELLOW IRIDITE

REF: MS-994 (CABINET)

ISSUE	ITEM	CHANGED FROM	DATE	CH. NO.	DRAFTS	CHECKER	ENG. APP.
B	1	HOLES DESIGNATED	1-4-62	6149	L.L.	<del>EMN</del>	EMN
A	1	S-404 WAS S-101	12/14/54	1001	HB		EMN
TOLERANCES		SCALE:					
DEC. DIM. $\pm$		MAXIMUM ALLOWABLE TOLERANCES HAVE BEEN DETERMINED AND ANY DEVIATIONS WILL BE CAUSE FOR REJECTION.					
FRAC. DIM. $\pm$		REMOVE ALL BURRS AND SHARP EDGES					
ANGULAR DIM. $\pm$							

1	REQ. PER UNIT	PMO-3	PROJECT NO.	ASS'Y. NO.	DATE
					12-28-56
					USED ON

REQ. ITEM	PART NO.	DESCRIPTION	SYMBOL
	.064	THE TECHNICAL MATERIEL CORP.	
	STOCK SIZE	MAMARONECK. NEW YORK	
	ALUMINUM (SEE NOTE)	REAR COVER, CABINET	
	MATERIAL	MODEL PMO-3	
	5052-H32	<i>Handwritten initials</i>	
	TYPE & TEMPER	HEAT TREAT. SPEC.	FINAL APPROVAL
	SEE NOTE		
	FINISH & SPEC. NO.	ELEC. DES. APP.	MECH. DES. APP.
			MS-995 B