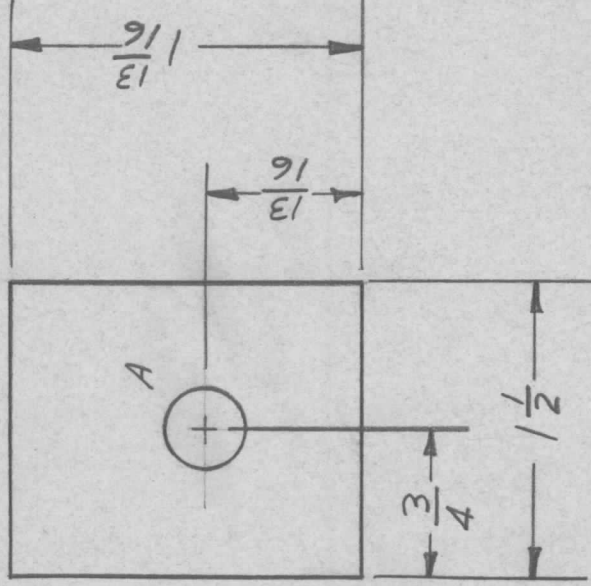


APPLICATION REVISIONS

| | | | | | | | | | |
|-----|---------------|-----------|-----|-------------|------|----------|-------|------|------|
| QTY | MODEL USED ON | ASS'Y NO. | LTR | DESCRIPTION | DATE | E.M.N.NO | DRAFT | CHKD | APPD |
|-----|---------------|-----------|-----|-------------|------|----------|-------|------|------|

2 AX8022

FRONT VIEW



A ~ 3/4 DIA. 1 REQ'D.

FINISH NOTES.

1. S404 YEL. IRIDITE
2. S114 ZINC CHROM.
3. S115 SMOOTH GRAY ENAM. } FRONT & EDGES ONLY.

REF: LD8034

| REQ'D ITEM | PART NUMBER | DESCRIPTION | SYM. |
|--|-----------------|-------------|-------|
| LIST OF MATERIAL | | | |
| THE TECHNICAL MATERIEL CORP. MAMARONECK, NEW YORK | | | |
| PLATE, LETTERING | | | |
| SIZE | CODE IDENT. NO. | DWG NO. | ISSUE |
| A | 82679 | MS8170 | φ |
| SCALE | | SHEET | OF |

UNLESS OTHERWISE SPECIFIED DIMENSIONS ARE IN INCHES AND INCLUDE CHEMICALLY APPLIED OR PLATED FINISHES

DECIMALS
X ± .05
.XX ± .01
.XXX ± .005

FRACTIONS
1/64
ANGLES
0°-30'

MATERIAL 061 ALUM
2024-T3

FINISH SEE NOTE

| | |
|----------------|---------|
| Ben Nap | DATE |
| FINAL APPROVAL | 1-21-68 |
| MECH. DES. | DATE |
| BW | 1-24-68 |
| ELECT. DES. | DATE |
| CHECKED | DATE |
| BW | 1-26-68 |
| DRAWN | DATE |

NOTICE TO PERSONS RECEIVING THIS DRAWING
THE TECHNICAL MATERIEL CORPORATION claims proprietary right in the material disclosed hereon. This drawing is issued in confidence for engineering information only and may not be reproduced or used to manufacture anything shown hereon without permission from THE TECHNICAL MATERIEL CORPORATION to the user. This drawing is loaned for mutual assistance and is subject to recall at any time.