

APPLICATION

REVISIONS

QTY

MODEL USED ON

ASSY NO.

LTR

DESCRIPTION

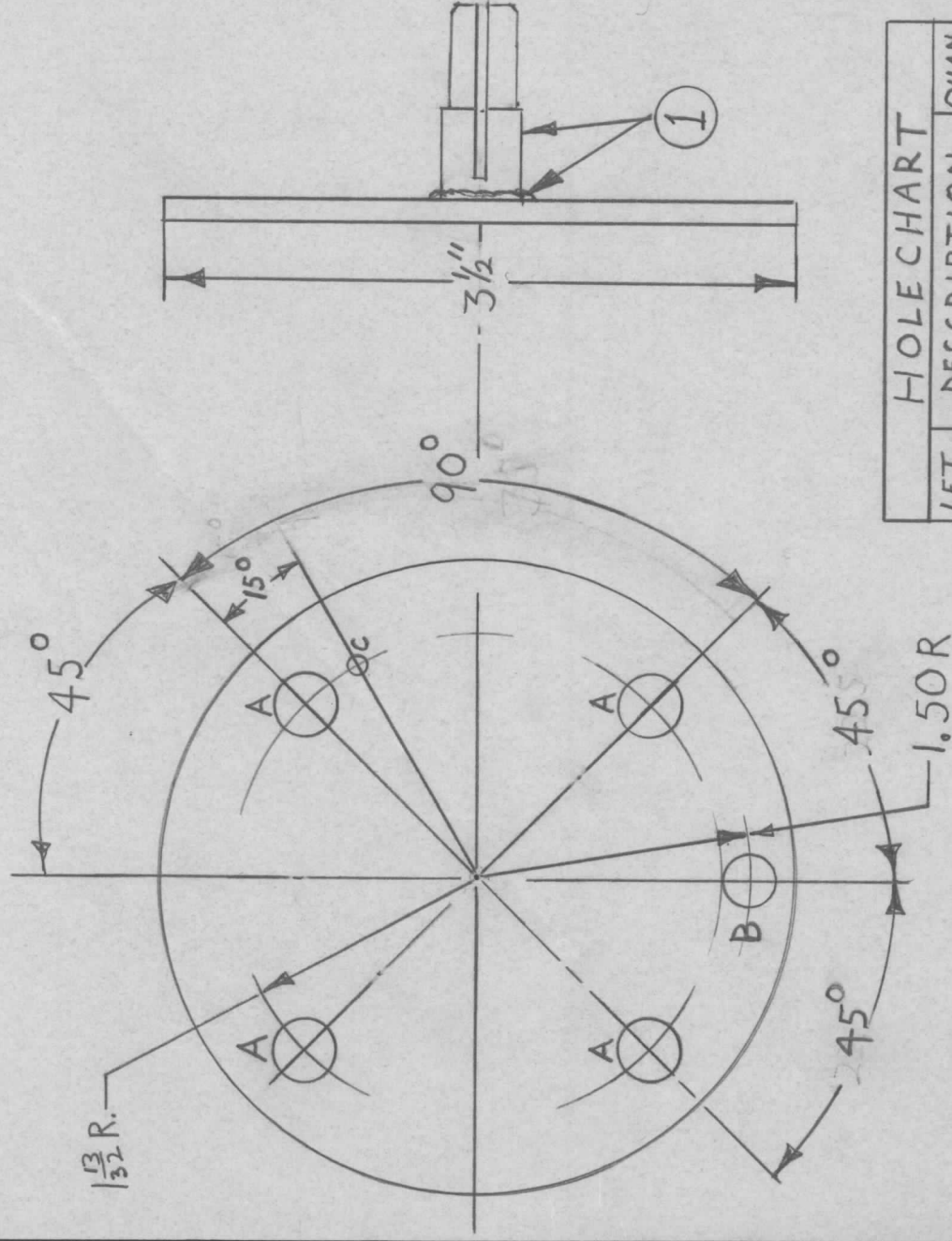
DATE

E.M.N.NO

DRAFT

CHKD

APPD



NOTE:

- ① INNER CONNECTOR
 1/2 OF ANDREWS P/N 34660
 SILVER SOLDER
 AND HEAT TREAT

HOLE CHART		
LET.	DESCRIPTION	QUAN.
A	1 1/32 DIA	4
B	9/32 DIA	1
C	5/32 DIA	1

UNLESS OTHERWISE SPECIFIED
 DIMENSIONS ARE IN INCHES
 AND INCLUDE CHEMICALLY APPLIED
 OR PLATED FINISHES

DECIMALS
 .X ± .05
 .XX ± .01
 .XXX ± .005

FRACTIONS
 1/64
 TOLS.
 ANGLES
 0° - 30'

MATERIAL

.125 HARD COP.

FINISH

REQ'D ITEM

PART NUMBER

DESCRIPTION

SYM.

LIST OF MATERIAL

FINAL APPROVAL <i>SPM</i>	DATE 9/16/67
MECH. DES. L. NOTARANGELO	DATE 8/29/67
ELECT. DES.	DATE
CHECKED G. ORLANDI	DATE 12-12-67
DRAWN L. NOTARANGELO	DATE 8/29/67

THE TECHNICAL MATERIEL CORP.

MAMARONECK, NEW YORK

GROUNDING PLATE
 NO. 182 FIELD ANT.

NOTICE TO PERSONS RECEIVING THIS DRAWING

THE TECHNICAL MATERIEL CORPORATION claims proprietary right in the material disclosed hereon. This drawing is issued in confidence for engineering information only and may not be reproduced or used to manufacture anything shown hereon without permission from THE TECHNICAL MATERIEL CORPORATION to the user. This drawing is loaned for mutual assistance and is subject to recall at any time.

SIZE CODE IDENT. NO. DWG NO.

A 82679 4 MS 8105

ISSUE

Ø

SCALE

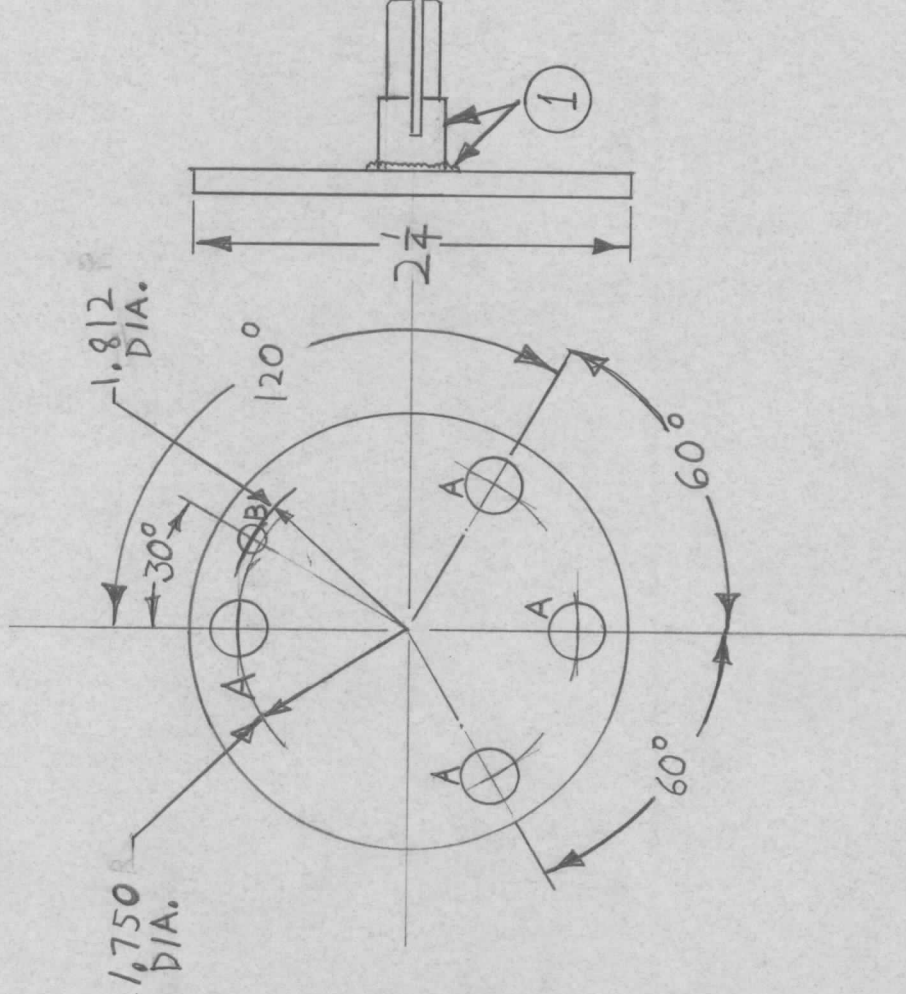
SHEET

OF

REVISIONS

APPLICATION

QTY	MODEL USED ON	ASS'Y NO.	LTR	DESCRIPTION	DATE	E.M.N.NO	DRAFT	CHKD	APPD
-----	---------------	-----------	-----	-------------	------	----------	-------	------	------



NOTE:
 ① INNER CONNECTOR 1/2 OF
 ANDREWS P/N 34389
 SILVER SOLDER
 AND HEAT TREAT

HOLE CHART		
LFT.	DESCRIPTION	QUAN.
A	9/32 DIA.	4
B	.129 DIA.	1

REQ'D ITEM	PART NUMBER	DESCRIPTION	SYM.
LIST OF MATERIAL			
FINAL APPROVAL <i>STM</i>	DATE 9/11/67	THE TECHNICAL MATERIEL CORP. MAMARONECK, NEW YORK	
MECH. DES. L. NOTARANGELO	DATE 8/29/67		
ELECT. DES.	DATE	GROUNDING PLATE NO. 384 FIELD ANT.	
CHECKED G. URLANDI	DATE 12-13-67		
DRAWN L. NOTARANGELO	DATE 8/29/67		
UNLESS OTHERWISE SPECIFIED DIMENSIONS ARE IN INCHES AND INCLUDE CHEMICALLY APPLIED OR PLATED FINISHES		SIZE	ISSUE
DECIMALS	FRACTIONS	A	40MS8106
.X ± .05	1/64	SCALE	SHEET OF
.XX ± .01	ANGLES		
.XXX ± .005	0° - 30'		
MATERIAL .125 HARD COP.		CODE IDENT. NO.	DWG NO.
FINISH			
NOTICE TO PERSONS RECEIVING THIS DRAWING THE TECHNICAL MATERIEL CORPORATION claims proprietary right in the material disclosed hereon. This drawing is issued in confidence for engineering information only and may not be reproduced or used to manufacture anything shown hereon without permission from THE TECHNICAL MATERIEL CORPORATION to the user. This drawing is loaned for mutual assistance and is subject to recall at any time.			

APPLICATION

QTY 1

MODEL USED ON BSP-3D

LTR

ASS'Y NO.

REVISIONS

DESCRIPTION

DATE

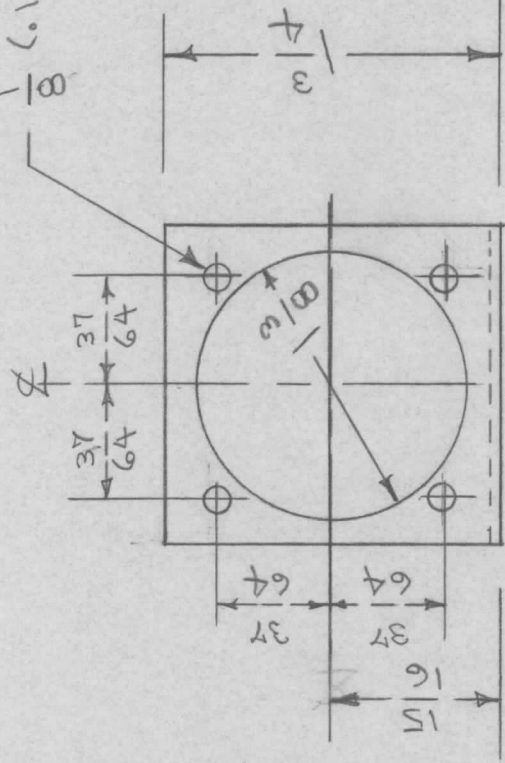
E.M.N.NO

DRAFT

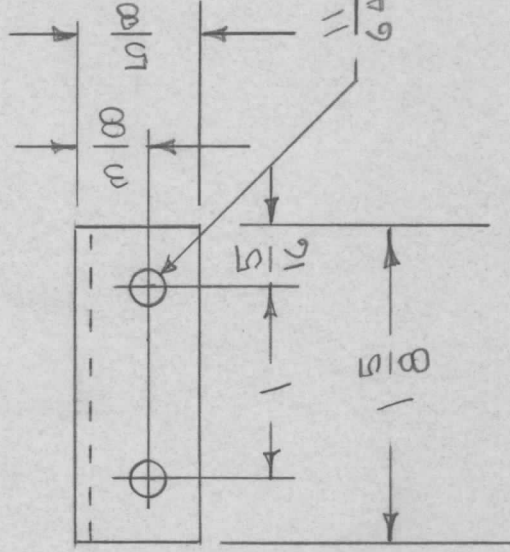
CHKD

APPD

$\frac{1}{8}$ (.125) DIA
4 REQ'D



$\frac{11}{64}$ (.172) DIA
2 REQ'D



UNLESS OTHERWISE SPECIFIED DIMENSIONS ARE IN INCHES AND INCLUDE CHEMICALLY APPLIED OR PLATED FINISHES

DECIMALS
X ± .05
.XX ± .01
.XXX ± .005

FRACTIONS
1/64
ANGLES
0°-30°

MATERIAL 006A
5052 H32 ALUM.

FINISH
S404 IRIDITE

REQ'D ITEM

PART NUMBER

DESCRIPTION

SYM.

LIST OF MATERIAL

THE TECHNICAL MATERIEL CORP.
MAMARONECK, NEW YORK

FINAL APPROVAL
G.M.
DATE 12/15/67

MECH. DES.

ELECT. DES.

CHECKED
G. ORELANDI
DATE 12-14-67

DRAWN
C.D. DEAN
DATE 12-1-64

BRACKET, XFMR MTG
BSP-3D

NOTICE TO PERSONS RECEIVING THIS DRAWING
THE TECHNICAL MATERIEL CORPORATION claims proprietary right in the material disclosed hereon. This drawing is issued in confidence for engineering information only and may not be reproduced or used to manufacture anything shown hereon without permission from THE TECHNICAL MATERIEL CORPORATION to the user. This drawing is loaned for mutual assistance and is subject to recall at any time.

SIZE A

CODE IDENT. NO. 82679

DWG NO.

M58109

ISSUE

Ø

SCALE

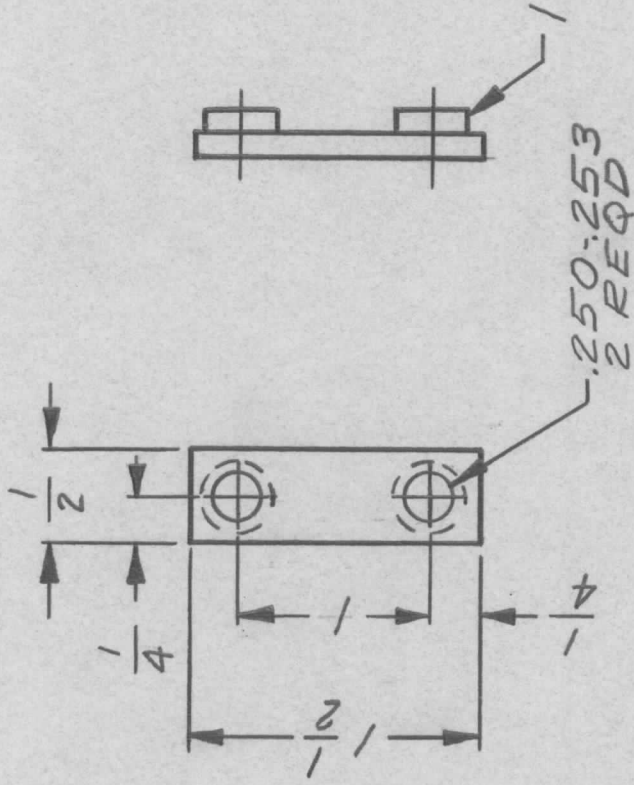
SHEET

OF

APPLICATION REVISIONS

QTY	MODEL USED ON	ASS'Y NO.	LTR	DESCRIPTION	DATE	E.M.N.NO	DRAFT	CHKD	APPD
-----	---------------	-----------	-----	-------------	------	----------	-------	------	------

2 AX8007



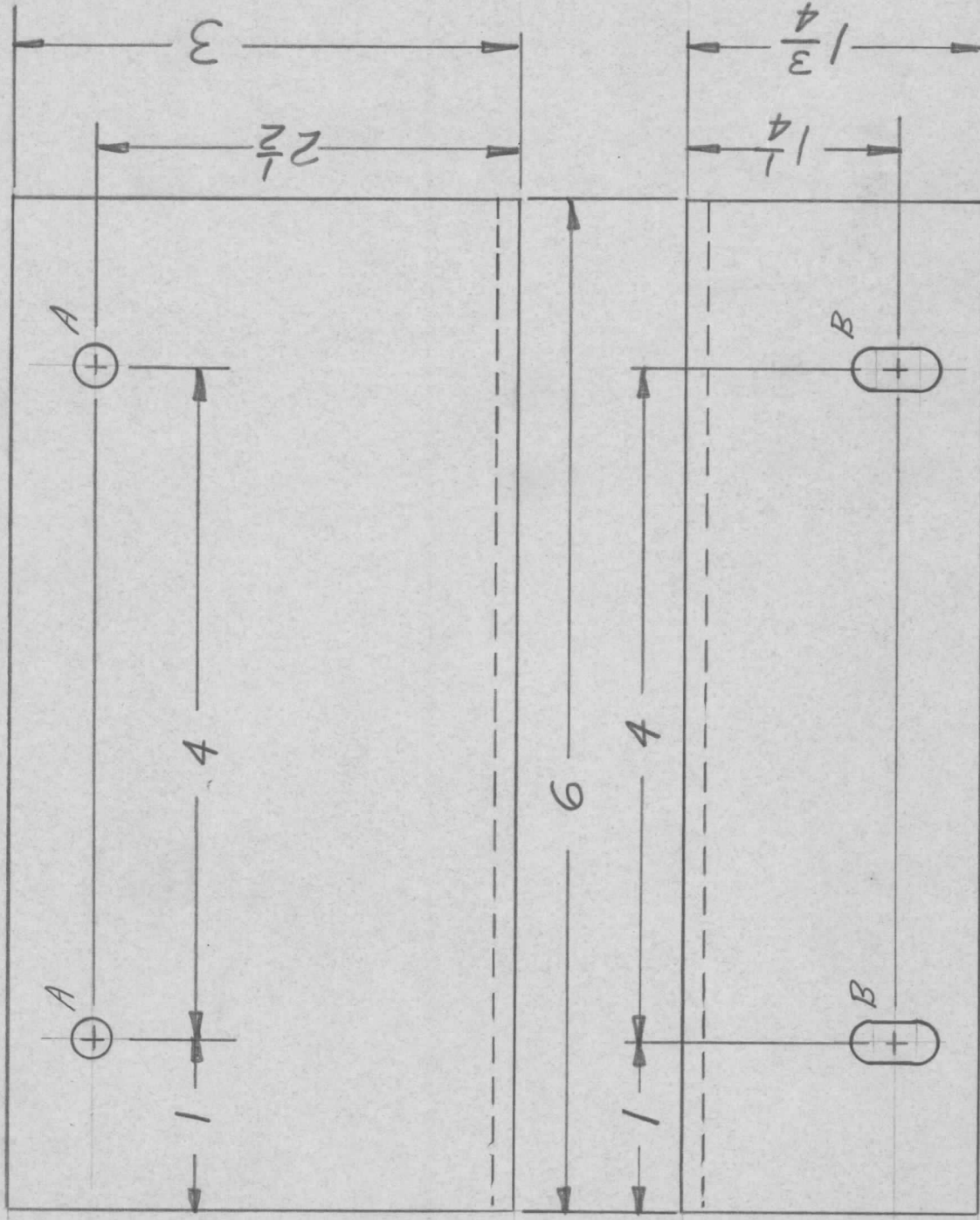
UNLESS OTHERWISE SPECIFIED DIMENSIONS ARE IN INCHES AND INCLUDE CHEMICALLY APPLIED OR PLATED FINISHES		2	1	NT129-1032-6	NUT, ROUND, SWAGE TYPE	SYM.
DECIMALS	FRACTIONS	REQ'D ITEM	PART NUMBER	LIST OF MATERIAL		
X ± .05	1/64	FINAL APPROVAL	DATE	THE TECHNICAL MATERIEL CORP.		
.XX ± .01	TOLS.	MECH. DES.	DATE	MAMARONECK, NEW YORK		
.XXX ± .005	ANGLES	ELECT. DES.	DATE	BRACKET, FRONT		
MATERIAL: 125 THK	0°-30'	CHECKED	DATE	PANEL, MTG		
5052 H32 ALUM.		G. ORLANDI	1-2-68	SIZE		
FINISH 54-04 IRIDITE		G.E. ZUCKER	12-13-67	A		
				CODE IDENT. NO.		
				MS8130		
				DWG NO.		
				ISSUE		
				Ø		

NOTICE TO PERSONS RECEIVING THIS DRAWING
 THE TECHNICAL MATERIEL CORPORATION claims proprietary right in the material disclosed hereon. This drawing is issued in confidence for engineering information only and may not be reproduced or used to manufacture anything shown hereon without permission from THE TECHNICAL MATERIEL CORPORATION to the user. This drawing is loaned for mutual assistance and is subject to recall at any time.

APPLICATION

REVISIONS

QTY	MODEL USED ON	ASS'Y NO.	LTR	DESCRIPTION	DATE	E.M.N.NO	DRAFT	CHKD	APPD
2	RACK 7A								



$A \sim \frac{15}{64}$ DIA. 2 REQ. $B \sim \frac{1}{4} \times \frac{1}{2}$ SLOT 2 REQ.

UNLESS OTHERWISE SPECIFIED DIMENSIONS ARE IN INCHES AND INCLUDE CHEMICALLY APPLIED OR PLATED FINISHES	REQ'D ITEM	PART NUMBER	DESCRIPTION	SYM.
DECIMALS X ± .05 .XX ± .01 .XXX ± .005	FINAL APPROVAL		LIST OF MATERIAL	
FRACTIONS 1/64 ANGLES 0°-30°	MECH. DES.		THE TECHNICAL MATERIEL CORP. MAMARONECK, NEW YORK	
MATERIAL 1/8 ALUM 5052-H32	ELECT. DES.		BRACKET, INTERFACE MTG.	
FINISH S404 VEL. IRID	CHECKED G. ORLANDI		SIZE A	CODE IDENT. NO. MS8140
	DRAWN JMA		SCALE	DWG NO. MS8140
				ISSUE ϕ

NOTICE TO PERSONS RECEIVING THIS DRAWING
 THE TECHNICAL MATERIEL CORPORATION claims proprietary right in the material disclosed hereon. This drawing is issued in confidence for engineering information only and may not be reproduced or used to manufacture anything shown hereon without permission from THE TECHNICAL MATERIEL CORPORATION to the user. This drawing is loaned for mutual assistance and is subject to recall at any time.

APPLICATION

QTY MODEL USED ON ASS'Y NO. LTR

2 UNIT 16B

REVISIONS

DESCRIPTION

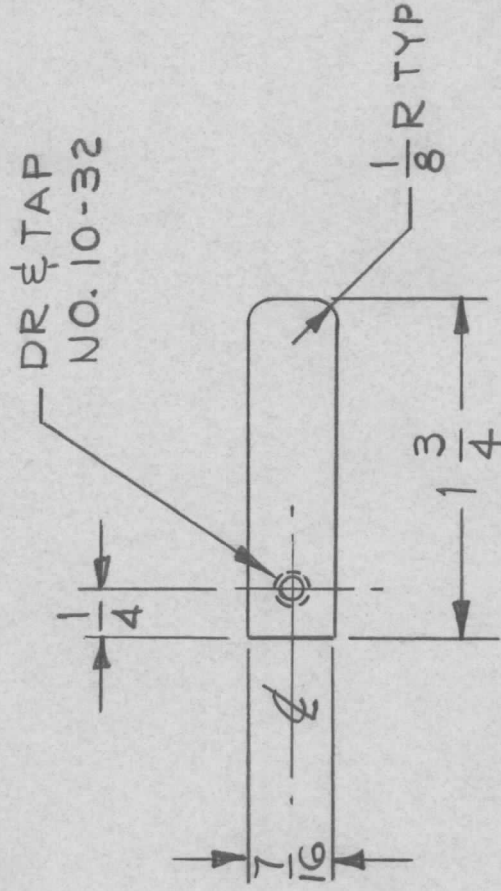
DATE

E.M.N.NO

DRAFT

CHKD

APPD



UNLESS OTHERWISE SPECIFIED DIMENSIONS ARE IN INCHES AND INCLUDE CHEMICALLY APPLIED OR PLATED FINISHES

DECIMALS .X ± .05 .XX ± .01 .XXX ± .005 FRACTIONS 1/64 ANGLES 0°-30°

MATERIAL 3/16 THK ALUM

FINISH S404 IRIDITE

REQ'D ITEM	PART NUMBER	DESCRIPTION	SYM.
LIST OF MATERIAL			
FINAL APPROVAL	DATE	THE TECHNICAL MATERIEL CORP.	
MECH. DES.	DATE	MAMARONECK, NEW YORK	
ELECT. DES.	DATE	ARM, LOCKING	
CHECKED	DATE		
DRAWN	DATE		

Am
R di tato
Amiska

NOTICE TO PERSONS RECEIVING THIS DRAWING
THE TECHNICAL MATERIEL CORPORATION claims proprietary right in the material disclosed hereon. This drawing is issued in confidence for engineering information only and may not be reproduced or used to manufacture anything shown hereon without permission from THE TECHNICAL MATERIEL CORPORATION to the user. This drawing is loaned for mutual assistance and is subject to recall at any time.

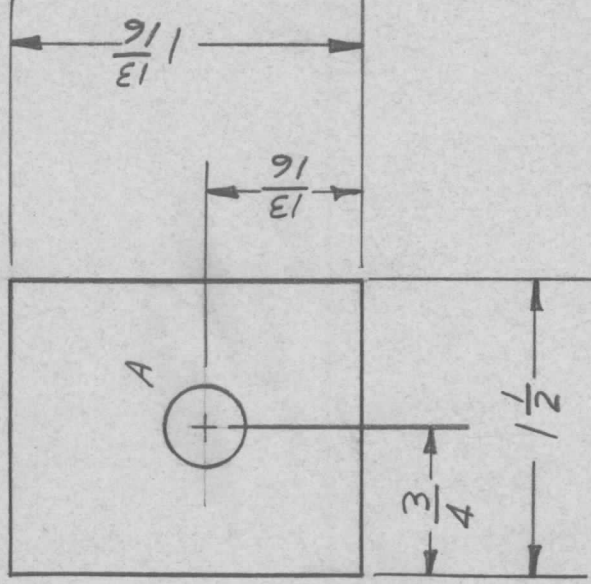
SIZE	CODE IDENT. NO.	DWG NO.	ISSUE
A	82679	MS8166	φ
SCALE	FULL	SHEET	OF

APPLICATION REVISIONS

QTY	MODEL USED ON	ASS'Y NO.	LTR	DESCRIPTION	DATE	E.M.N.NO	DRAFT	CHKD	APPD
-----	---------------	-----------	-----	-------------	------	----------	-------	------	------

2 AX8022

FRONT VIEW



A ~ 3/4 DIA. 1 REQ'D.

FINISH NOTES.

1. S404 YEL. IRIDITE
2. S114 ZINC CHROM.
3. S115 SMOOTH GRAY ENAM. } FRONT & EDGES ONLY.

REF: LD8034

UNLESS OTHERWISE SPECIFIED DIMENSIONS ARE IN INCHES AND INCLUDE CHEMICALLY APPLIED OR PLATED FINISHES	REQ'D ITEM	PART NUMBER	DESCRIPTION	SYM.
DECIMALS	LIST OF MATERIAL			
X ± .05	Ben Nap		THE TECHNICAL MATERIEL CORP.	
.XX ± .01	FINAL APPROVAL		MAMARONECK, NEW YORK	
.XXX ± .005	DATE			
	1-21-68			
MATERIAL 061 ALUM	MECH. DES.			
2024-73	DATE			
FINISH SEE NOTE	1-24-68			
	ELECT. DES.			
	DATE			
	1-26-68			
	CHECKED			
	DATE			
	1-26-68			
	DRAWN			
	DATE			
	1-26-68			
	PLATE, LETTERING			

NOTICE TO PERSONS RECEIVING THIS DRAWING
 THE TECHNICAL MATERIEL CORPORATION claims proprietary right in the material disclosed hereon. This drawing is issued in confidence for engineering information only and may not be reproduced or used to manufacture anything shown hereon without permission from THE TECHNICAL MATERIEL CORPORATION to the user. This drawing is loaned for mutual assistance and is subject to recall at any time.

SIZE	CODE IDENT. NO.	DWG NO.	ISSUE
A	82679	M58170	φ
SCALE		SHEET	OF