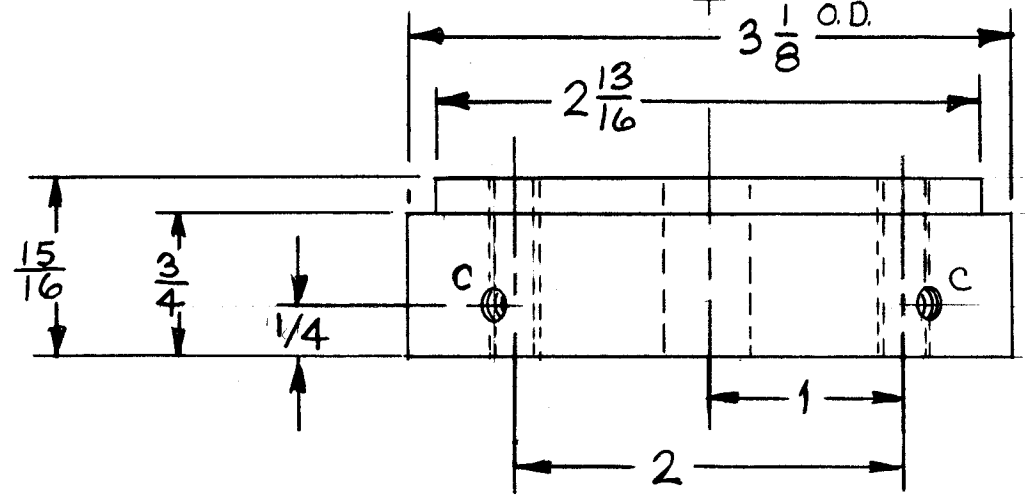
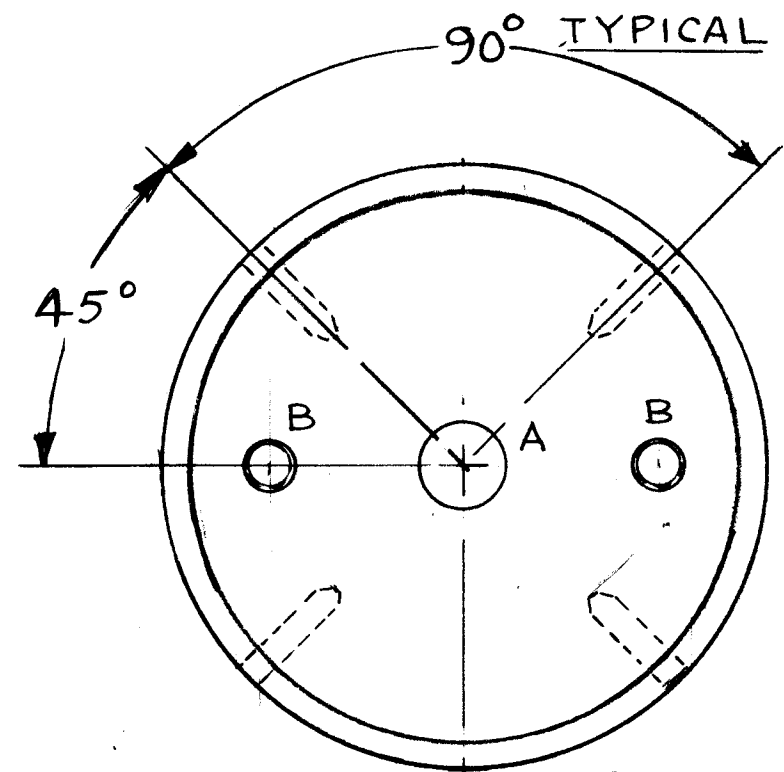


REVISIONS							
ZONE	LTR	DESCRIPTION	DATE	E.M.N.NO	DRAFT	CHKD	APPD
	Ø	ORIGINAL DESIGN FOR	5/12/69	#	GE		



HOLE DIMENSION

- A - .390 DIA. DRILL
- B - DRILL & TAP 1/8-28 NF
- C - DRILL & TAP 10-24 NC X 5/8 DP

1	ATW-1	ID 8054
QTY / UNIT	MODEL USED ON	ASS'Y NO.
APPLICATION		
	CODE	

NOTICE TO PERSONS RECEIVING THIS DRAWING
 THE TECHNICAL MATERIEL CORPORATION claims proprietary right in the material disclosed hereon. This drawing is issued in confidence for engineering information only and may not be reproduced or used to manufacture anything shown hereon without permission from THE TECHNICAL MATERIEL CORPORATION to the user. This drawing is loaned for mutual assistance and is subject to recall at any time.

UNLESS OTHERWISE SPECIFIED DIMENSIONS ARE IN INCHES AND INCLUDE CHEMICALLY APPLIED OR PLATED FINISHES	
DECIMALS .X ± .05 .XX ± .01 .XXX ± .005	FRACTIONS 1/64 ANGLES 0° -30'
MATERIAL 2024-T4 3 1/8 O.D. ALUM BAR	
FINISH S404 YEL. IRIDITE	

REQ'D	ITEM	PART NUMBER	DESCRIPTION	SYM.
LIST OF MATERIAL				
THE TECHNICAL MATERIEL CORP. MAMARONECK, NEW YORK				
MOUNTING BRACKET (TAIL CONE)				
SIZE	CODE IDENT. NO.	DWG NO.	ISSUE	
B	82679	MS-8310	Ø	
SCALE FULL			SHEET	OF