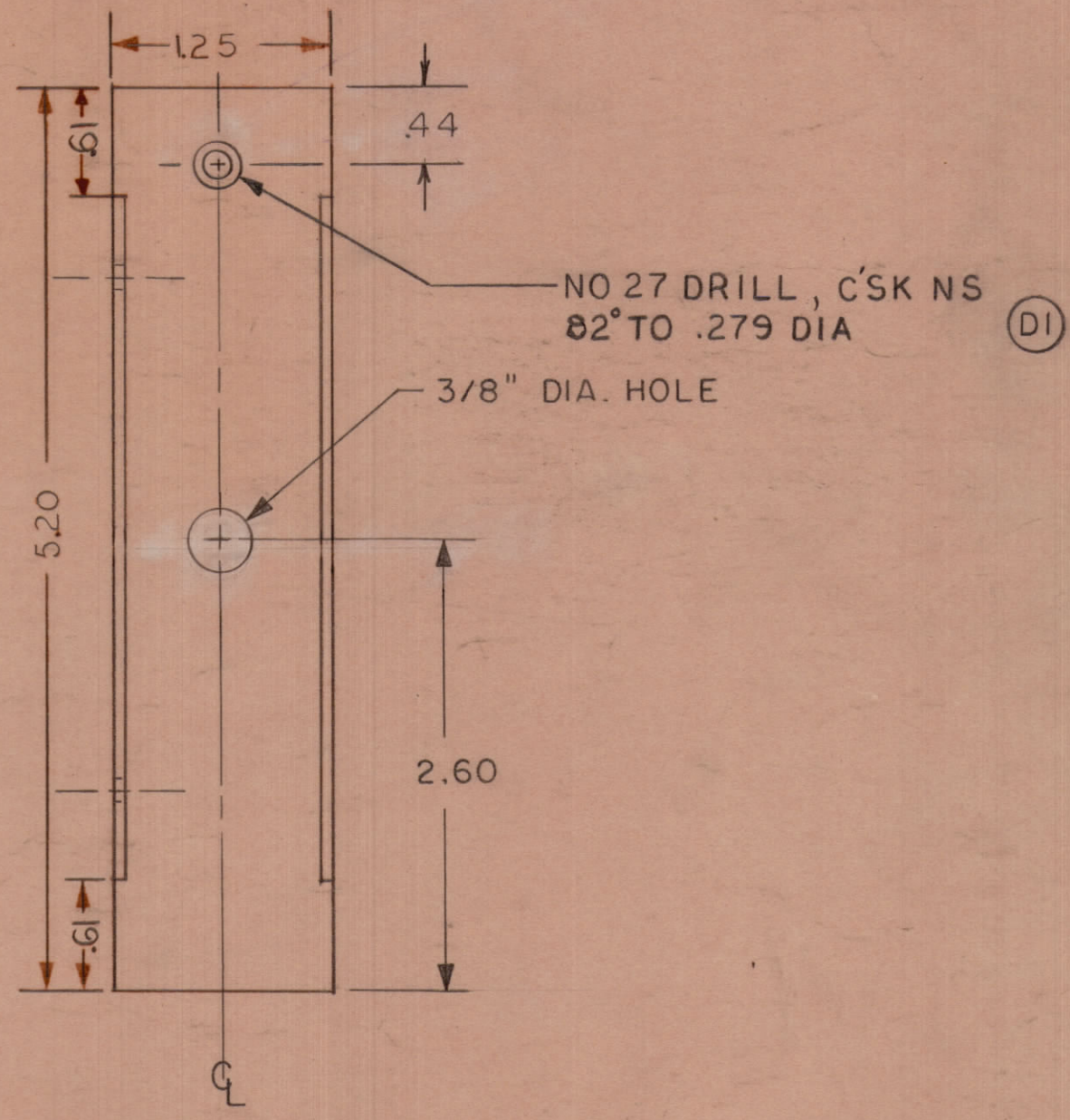
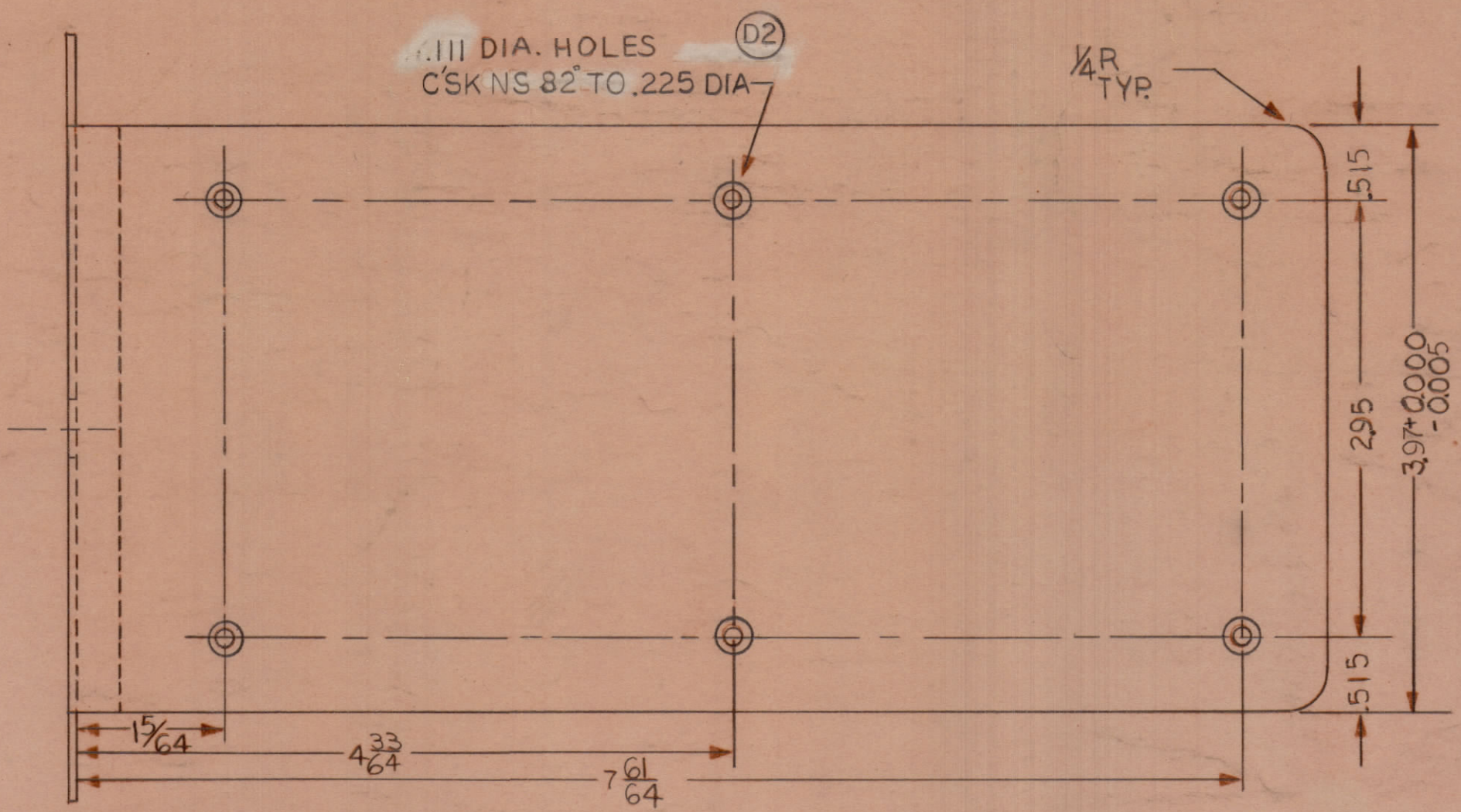
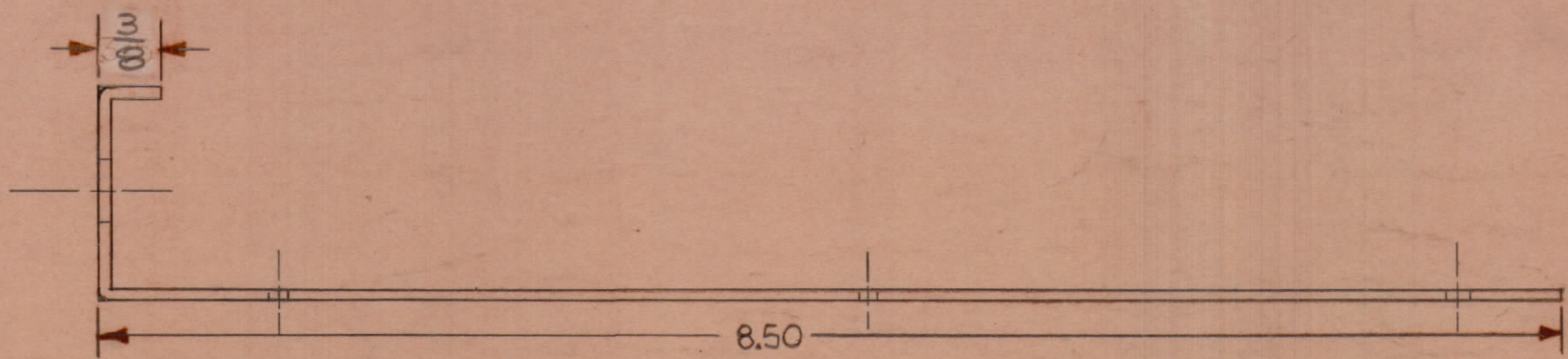


REVISIONS						
ZONE	LTR	DESCRIPTION	DATE	E.M.N.NO	DRAFT	CHKD APPD
	A	DIMENSIONS CHANGED	10-6-67		ROG	
	B	DIMENSIONS CHANGED. HOLES ADDED	10-17-67		ROG	
	C	REDRAWN COMPLETELY. OLD MULTRONICS NO. C2373029	12-7-67		EAI	JFP
	D	D1 ADDED HOLE D2 ADDED CSK TO HOLES	5-1-68		REL	REL JFP
	F	SHEET 1 WAS SHEET 4	7-3-68		ROS	JFP JFP
	X	DWG HAS 40M12C7020	8-12-68		C. GAOB	
	Ø	ORIGINAL RELEASE FOR PRODUCTION	8/27/69			



REAR VIEW
FM PROCESSING AMPLIFIER

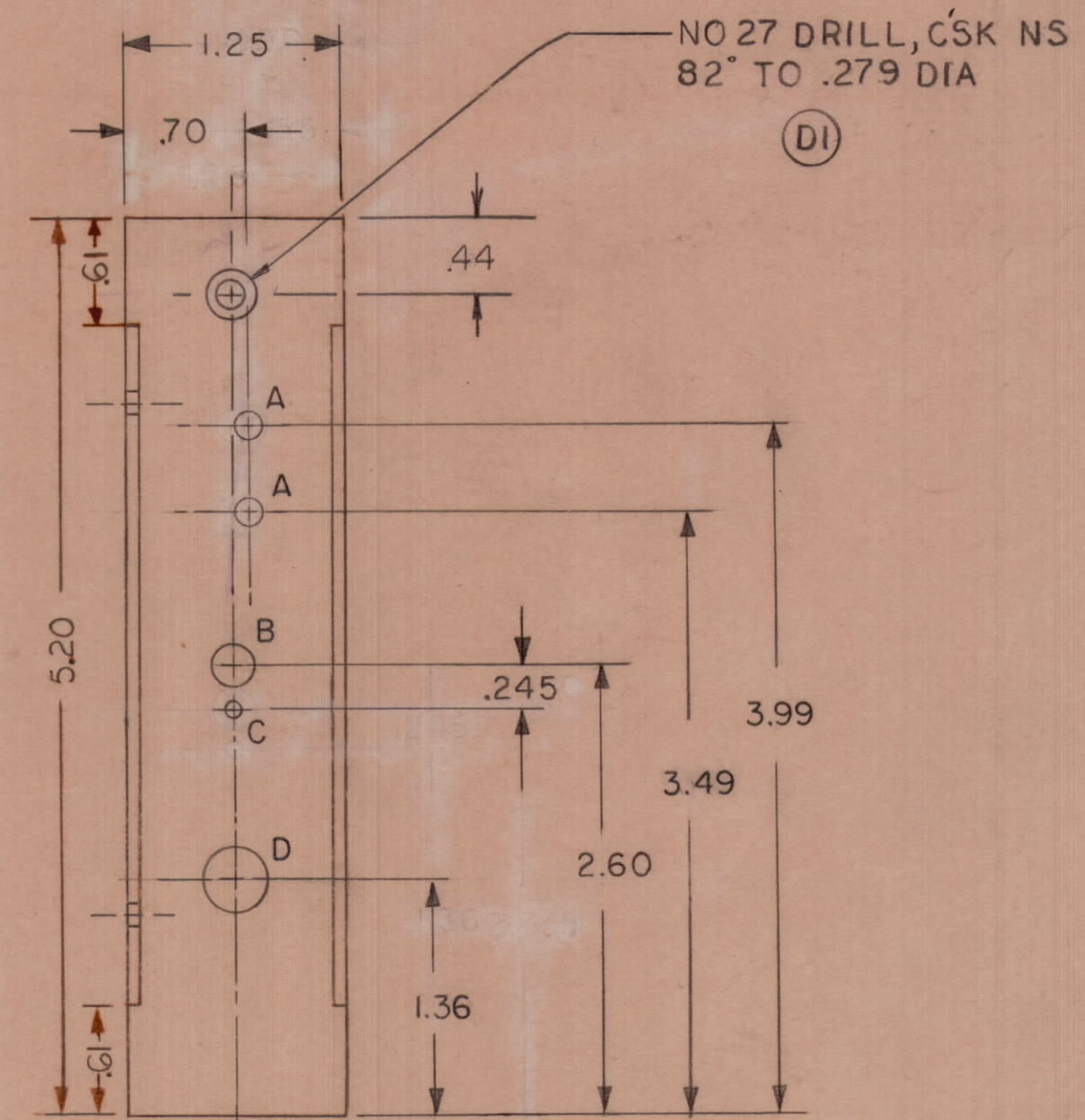
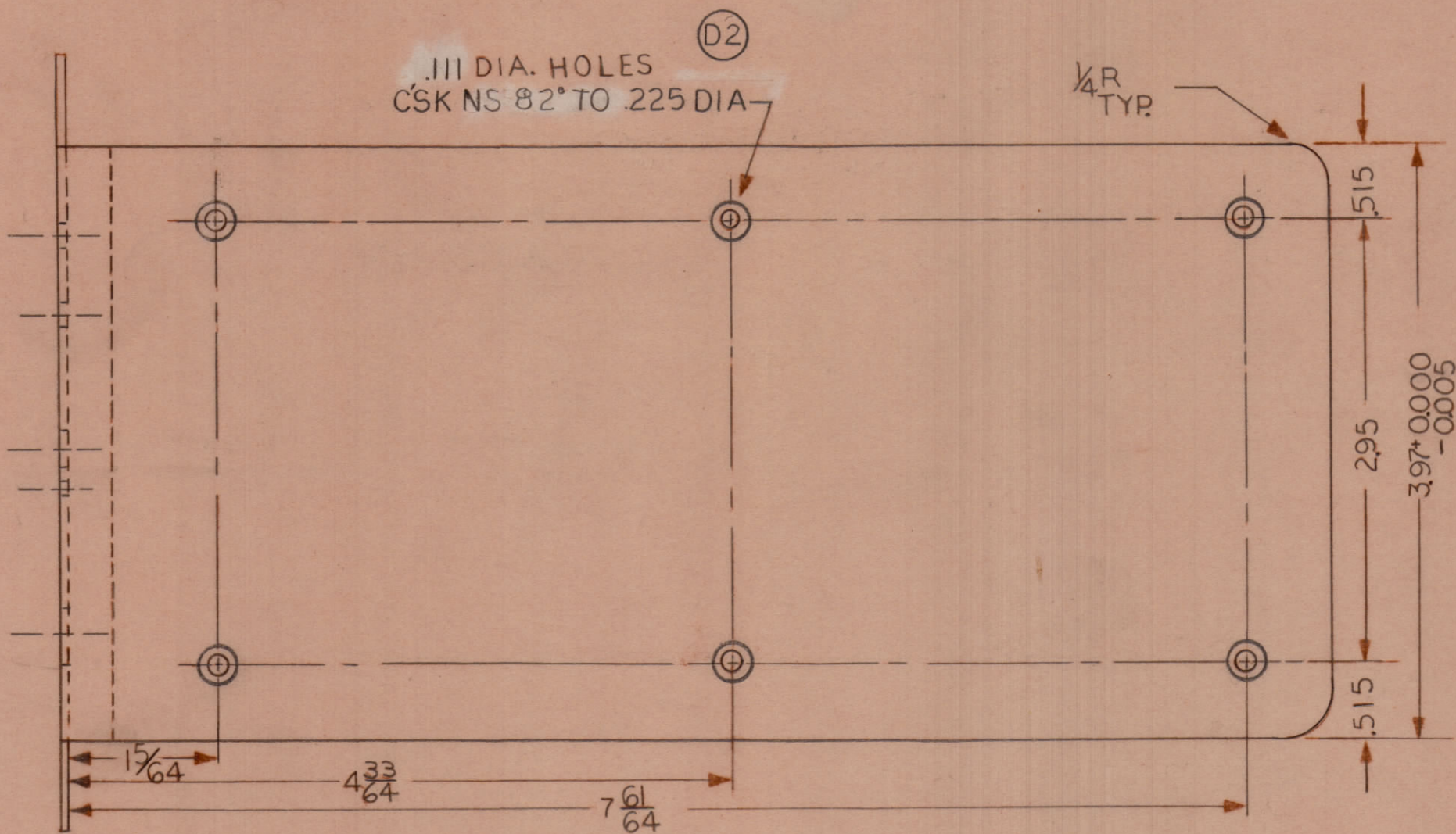
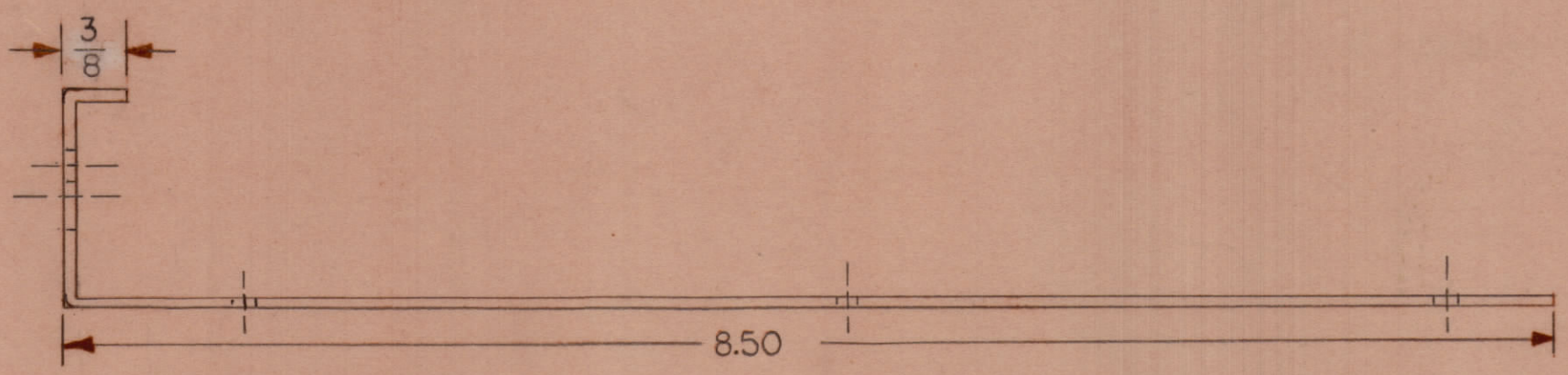
NOTE:
DEBURR ALL HOLES BOTH SIDES

1	SPT-3KVHF	AX8031
QTY / UNIT	MODEL USED ON	ASS'Y NO.
APPLICATION A8085		
CODE		
<small>NOTICE TO PERSONS RECEIVING THIS DRAWING</small> THE TECHNICAL MATERIEL CORPORATION claims proprietary right in the material disclosed hereon. This drawing is issued in confidence for engineering information only and may not be reproduced or used to manufacture anything shown hereon without permission from THE TECHNICAL MATERIEL CORPORATION to the user. This drawing is loaned for mutual assistance and is subject to recall at any time.		

UNLESS OTHERWISE SPECIFIED DIMENSIONS ARE IN INCHES AND INCLUDE CHEMICALLY APPLIED OR PLATED FINISHES	
TOLERANCES ON	
DECIMALS	FRACTIONS
.X ± .05	± 1/64
.XX ± .01	ANGLES
.XXX ± .005	± 0° -30'
MATERIAL	
18 GA. COLD ROLLED STEEL	
FINISH	
CAD. CHROMATE TREAT	

QTY. REQ.	ITEM	PART NO.	DESCRIPTION	SYMBOL
LIST OF MATERIAL				
FINAL APPROVAL: J.F.P. 1-31-68 MECH. DES: J.F.P. 7-6-67 ELECT. DES: 8-12-69 CHECKED: J.F.P. 12-8-67 DRAWN: J.F.P. 12-7-67				
THE TECHNICAL MATERIEL CORP. MAMARONECK, NEW YORK MODULE CHASSIS FOR ACCESSORY CABINETS SPT-3KVHF TRANSMITTER				
SIZE	CODE IDENT. NO.	DWG NO.	ISSUE	
C	82679	40MMS8372	Ø	
SCALE			SHEET 1 OF 3	

REVISIONS						
ZONE	LTR	DESCRIPTION	DATE	E.M.N. NO.	DRAFT	CHKD APPD
	A	DIMENSIONS CHANGED	10-6-67		ROG	JFP
	B	DIMENSIONS CHANGED. HOLES ADDED	10-12-67		ROG	JFP
	C	REDRAWN COMPLETELY OLD MULTRONICS NO. C2373029	12-7-67		EAI	JFP
	D	D1 ADDED HOLE. D2 ADDED CSK TO HOLES	5-1-68		PEL	PEL JFP
	X	DWG. WAS 40M12C7020	8-16-68		C. Grob	
	Ø	ORIGINAL RELEASE FOR PRODUCTION	8/27/69			



REAR VIEW
ATTENUATOR CONTROL
AND
AM PROCESSING AMPLIFIER

NOTE
DEBURR ALL HOLES BOTH SIDES

HOLE SIZE		
HOLE	DIA.	QTY
A	3/16	2
B	1/4	1
C	.096	1
D	3/8	1

1	SPT-3KVHF	AX8030
QTY / UNIT	MODEL USED ON	ASS'Y NO.
APPLICATION		
CODE		
NOTICE TO PERSONS RECEIVING THIS DRAWING		
THE TECHNICAL MATERIEL CORPORATION claims proprietary right in the material disclosed hereon. This drawing is issued in confidence for engineering information only and may not be reproduced or used to manufacture anything shown hereon without permission from THE TECHNICAL MATERIEL CORPORATION to the user. This drawing is loaned for mutual assistance and is subject to recall at any time.		

UNLESS OTHERWISE SPECIFIED DIMENSIONS ARE IN INCHES AND INCLUDE CHEMICALLY APPLIED OR PLATED FINISHES

TOLERANCES ON

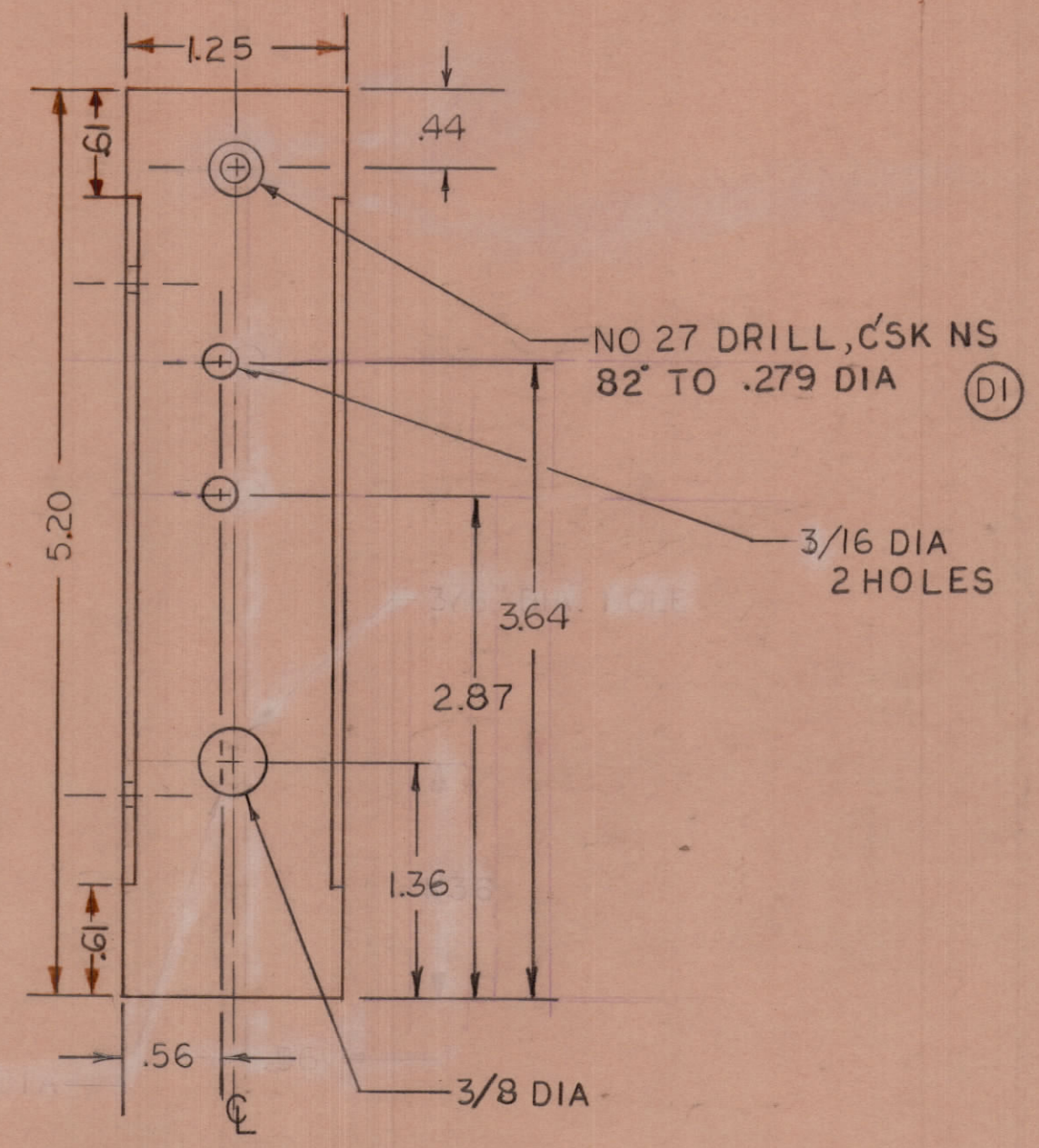
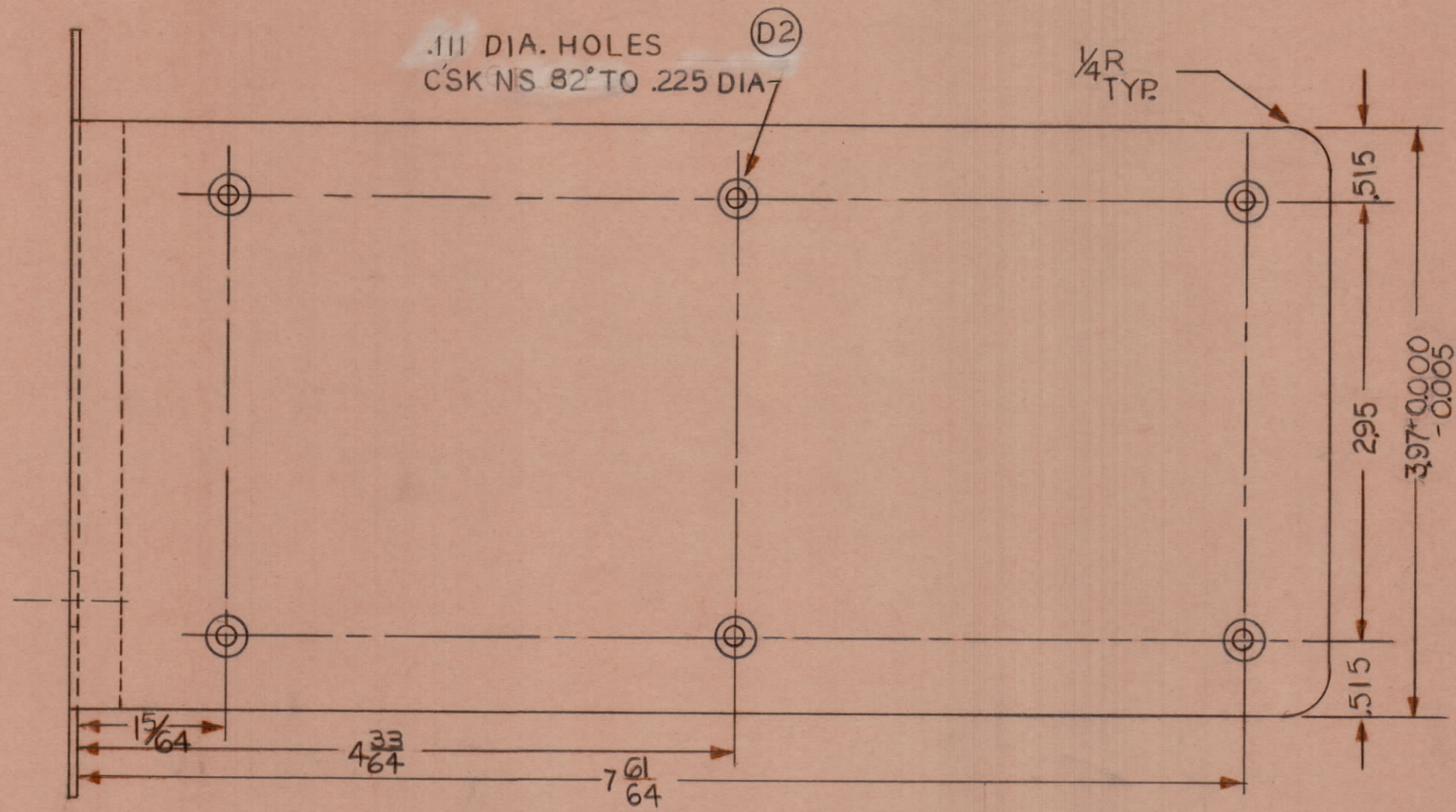
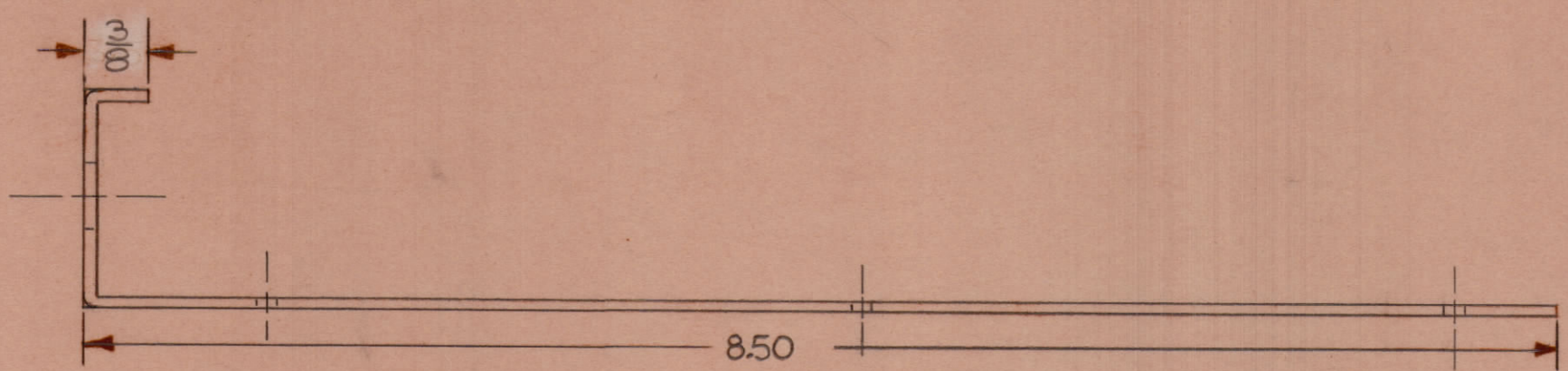
DECIMALS	FRACTIONS
.X ± .05	± 1/64
.XX ± .01	ANGLES
.XXX ± .005	± 0° -30'

MATERIAL
18 GA. COLD ROLLED STEEL

FINISH
CAD. CHROMATE TREAT

QTY. REQ.	ITEM	PART NO.	DESCRIPTION	SYMBOL
LIST OF MATERIAL				
THE TECHNICAL MATERIEL CORP. MAMARONECK, NEW YORK				
MODULE CHASSIS FOR ACCESSORY CABINETS SPT-3KVHF TRANSMITTER				
SIZE	CODE	IDENT. NO.	DWG. NO.	ISSUE
C	82679	40MMS	8372	Ø
SCALE				SHEET 2 OF 3

REVISIONS							
ZONE	LTR	DESCRIPTION	DATE	E.M.N.NO	DRAFT	CHKD	APPD
	A	DIMENSIONS CHANGED	10-6-67		ROG	CMM	
	B	DIMENSIONS CHANGED. HOLES ADDED	10-12-67		ROG	CMM	
	C	REDRAWN COMPLETELY. OLD MULTRONICS NO. C2373029	12-7-67		EAI	JFP	JFP
	D	D1 ADDED HOLE D2 ADDED CSK TO HOLES	5-1-68		RES	RES	JFP
	E	ADDED TWO 3/16 HOLES	20MAY 1968		RES	JFP	JFP
	X	DWG. WAS 40M12C7020	8-16-68		C.Grob		
	Ø	ORIGINAL RELEASE FOR PRODUCTION	8/27/69				



NOTE:
DEBURR ALL HOLES BOTH SIDES

REAR VIEW
VIDEO PROCESSING AMPLIFIER

1	SPT3KVHF	AX8032
QTY / UNIT	MODEL USED ON	ASS'Y NO.
APPLICATION		
	CODE	
<small>NOTICE TO PERSONS RECEIVING THIS DRAWING</small> <small>THE TECHNICAL MATERIEL CORPORATION claims proprietary right in the material disclosed hereon. This drawing is issued in confidence for engineering information only and may not be reproduced or used to manufacture anything shown hereon without permission from THE TECHNICAL MATERIEL CORPORATION to the user. This drawing is loaned for mutual assistance and is subject to recall at any time.</small>		

UNLESS OTHERWISE SPECIFIED DIMENSIONS ARE IN INCHES AND INCLUDE CHEMICALLY APPLIED OR PLATED FINISHES

TOLERANCES ON

DECIMALS	FRACTIONS
X ± .05	± 1/64
.XX ± .01	ANGLES
.XXX ± .005	± 0° -30'

MATERIAL
18 GA. COLD ROLLED STEEL

FINISH
CAD. CHROMATE TREAT

QTY. REQ.	ITEM	PART NO.	DESCRIPTION	SYMBOL
LIST OF MATERIAL				
FINAL APPROVAL: JFP [Signature] DATE: 1-31-68 MECH. DES: JFP DATE: 7-6-67 ELECT. DES: [Signature] DATE: 8-11-69 CHECKED: [Signature] DATE: 12-8-67 DRAWN: [Signature] DATE: 12-7-67				
THE TECHNICAL MATERIEL CORP. MAMARONECK, NEW YORK MODULE CHASSIS FOR ACCESSORY CABINETS SPT-3KVHF TRANSMITTER				
SIZE	CODE	IDENT. NO.	DWG. NO.	ISSUE
C	82679	40M	MS8372	Ø
SCALE				SHEET 3 OF 3