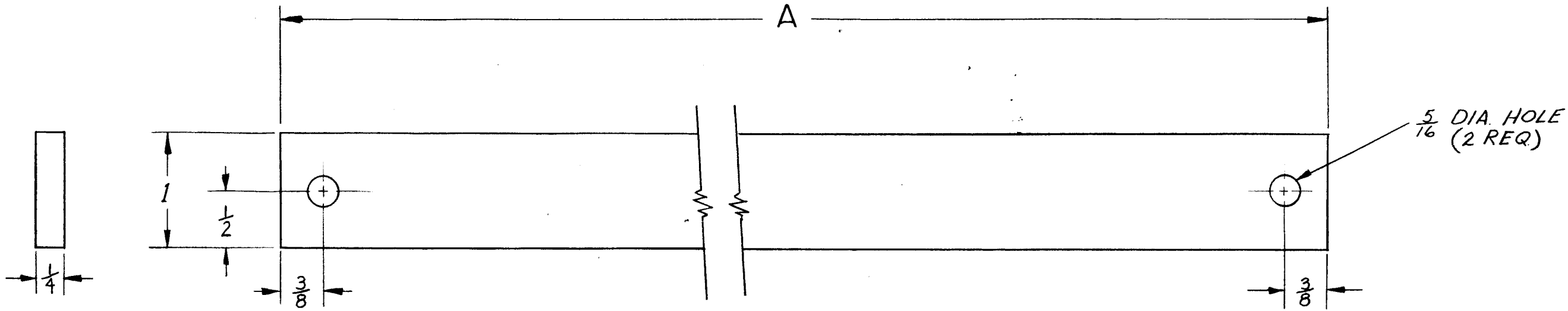


REVISIONS						
ZONE	LTR	DESCRIPTION	DATE	E.M.N.NO	DRAFT	CHKD APPD
	Ø	ORIGINAL RELEASE	8/26/69	Ø	CG	Ø



	A LENGTH
-1	9 ³ / ₄
-2	12 ³ / ₄

REQ'D	ITEM	PART NUMBER	DESCRIPTION	SYM.
LIST OF MATERIAL				
THE TECHNICAL MATERIEL CORP. MAMARONECK, NEW YORK				
MOUNTING PLATE				
UNLESS OTHERWISE SPECIFIED DIMENSIONS ARE IN INCHES AND INCLUDE CHEMICALLY APPLIED OR PLATED FINISHES		FINAL APPROVAL <i>[Signature]</i>	DATE 8/25/69	
DECIMALS .X ± .05 .XX ± .01 .XXX ± .005		FRACTIONS 1/64 TOLS. ANGLES 0°-30'	ELECT. DES. <i>[Signature]</i>	DATE 8/13/69
MATERIAL .250 x 1.0 6061-5T6 ALUM		MECH. DES.	CHECKED <i>[Signature]</i>	DATE 9-5-68
FINISH 5404 YEL IRIDITE		DRAWN C. GROB	DATE 9-5-68	
NOTICE TO PERSONS RECEIVING THIS DRAWING THE TECHNICAL MATERIEL CORPORATION claims proprietary right in the material disclosed hereon. This drawing is issued in confidence for engineering information only and may not be reproduced or used to manufacture anything shown hereon without permission from THE TECHNICAL MATERIEL CORPORATION to the user. This drawing is loaned for mutual assistance and is subject to recall at any time.		SIZE B	CODE IDENT. NO. 82679	DWG NO. MS8414
		SCALE 1:1	SHEET 1 OF 1	