

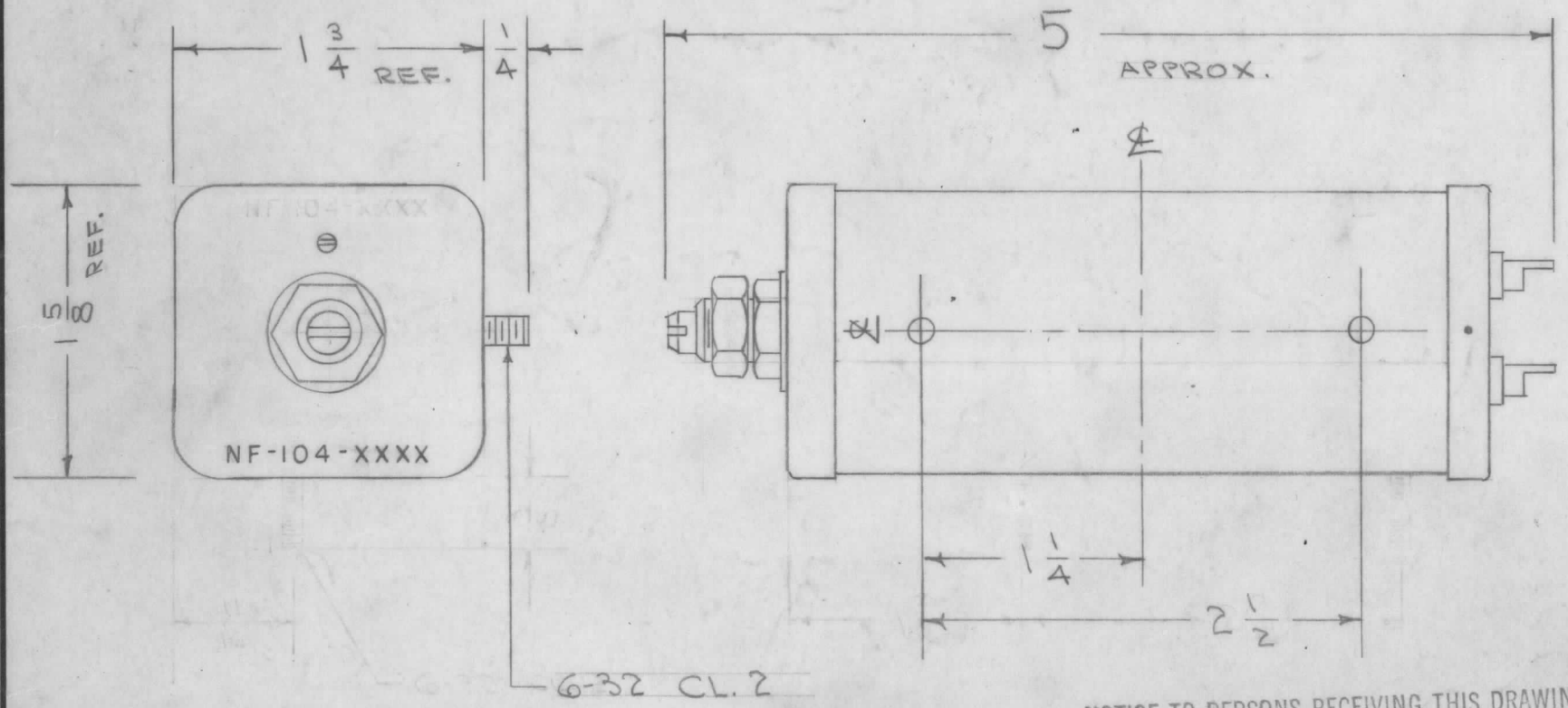
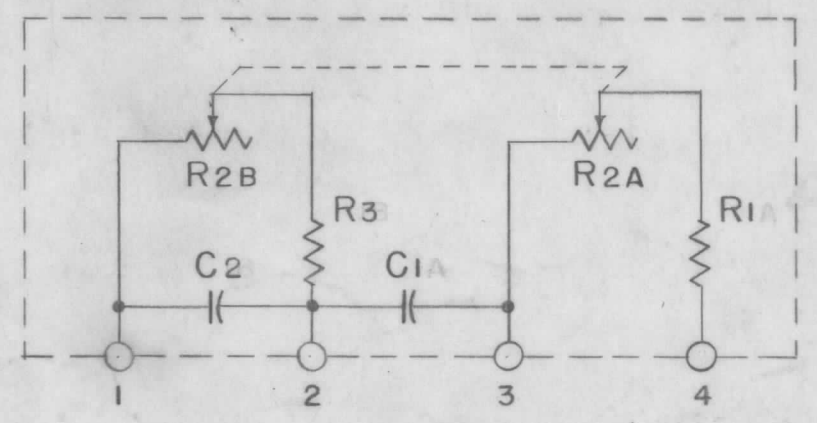
IF IT IS FOUND DESIRABLE TO CHANGE ANY TOLERANCE OR OTHER DETAIL SPECIFIED ON THIS DRAWING NOTIFY THE PURCHASER PROMPTLY.

MAXIMUM ALLOWABLE TOLERANCES HAVE BEEN DETERMINED AND DEVIATIONS WILL BE CAUSE FOR REJECTION. REMOVE ALL BURRS AND SHARP EDGES

NF-104 C

PART NO.	FREQ. $\sim$	PART NO.	FREQ. $\sim$	PART NO.	FREQ. $\sim$
NF-104-425	425	NF-104-1275	1275	NF-104-2125	2125
-595	595	-1445	1445	-2295	2295
-765	765	-1615	1615	-2465	2465
-935	935	-1785	1785	-2635	2635
-1105	1105	-1955	1955	-2805	2805

NOTE:  
SUFFIX DENOTES DESIGN CENTER FREQUENCY IN C.P.S.



MECHANICAL SPECS.-  
 1-CASE - .019 STEEL  
 2-STUDS- G-32 X 3/8  
 3-COLOR- GREY  
 4-DIMENSIONS- AS SHOWN.  
 ELECTRICAL SPECS.-  
 1- NETWORK PROVIDES PROPER ELECTRICAL CONSTANTS FOR OSCILLATION AT FREQ. DENOTED BY SUFFIX. (IF USED WITH ASSOCIATED CIRCUITRY AS DESIGNED)  
 2- THE VARIABLE RESISTOR, FORMING PART OF THE NETWORK, ALLOWS FOR PRECISE ADJUSTMENT OF FREQ. TO DESIGN CENTER. TOTAL RANGE OF THIS CONTROL EXTENDS TO APPROX  $\pm 5\%$  OF CENTER FREQ.  
 3- TEMP. COEF. OF UNIT BETTER THAN 100 PPM/ $^{\circ}$ C IN THE RANGE OF  $0^{\circ}$ C TO  $60^{\circ}$ C.

**NOTICE TO PERSONS RECEIVING THIS DRAWING**

THE TECHNICAL MATERIEL CORPORATION claims proprietary right in the material disclosed hereon. This drawing is issued in confidence for engineering information only and may not be reproduced or used to manufacture anything shown hereon without permission from THE TECHNICAL MATERIEL CORPORATION to the user. This drawing is loaned for mutual assistance and is subject to recall at any time.

Property of:  
THE TECHNICAL MATERIEL CORPORATION  
MAMARONECK, NEW YORK

REF: A-847 & CH-132

ISSUE	ITEM	CHANGED FROM	DATE	CN. NO.	DRAFTS	CHECKER	ENG. APP.
C	1	REF: WAS A-847 & CH-128	9/1/54	3	11	WOL	KZ
B	1	LUG END ROTATED 180°	10/10/54	2	M.H.S.	WOL	KZ
A	1	STUD POSITION CHANGED	11/4/54	1	WOL	WOL	A.J.J.

TOLERANCES		SCALE: #
ALL OTHERS	DEC. DIM. $\pm$ FRAC. DIM. $\pm$ ANGULAR DIM. $\pm$	DRILL, PUNCH, COMMERCIAL STOCK SIZES AND MANUFACTURERS TOLERANCES ARE NOT INCLUDED.

3	RSC-2	170	A-847	10/13/54
REQ PER UNIT	MODEL	PROJECT NO.	ASS'Y. NO.	DATE
USED ON				

REQ.	ITEM	PART NO.	DESCRIPTION	SYMBOL
#	#	#	THE TECHNICAL MATERIEL CORP. MAMARONECK, NEW YORK	
#	#	#	FREQ. DETERMINING NETWORK	
#	#	#	MATERIAL WEIGHT PER PC.	
#	#	#	TYPE & TEMPER	
#	#	#	HEAT TREAT. SPEC.	
#	#	#	FINISH & SPEC. NO.	

DRAWN: C.D.D. 10/11/54  
 ELEC. DES. APP.: KZ  
 MECH. DES. APP.: WOL  
 CHECKED: J.A.L.  
 FINAL APPROVAL: A.J.J.  
 NF-104 C