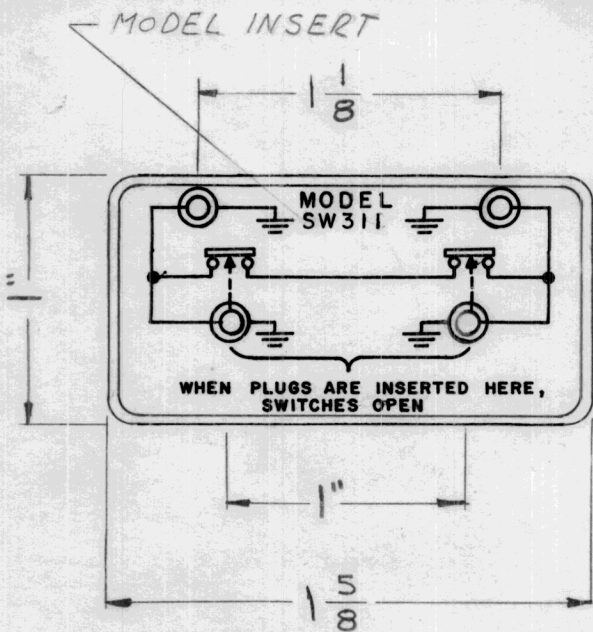


STANDARD DRAWING

THE CONTENTS OF THIS DRAWING ARE THE EXCLUSIVE PROPERTY OF THE TECHNICAL MATERIEL CORP. ITS UNAUTHORIZED USE OR REPRODUCTION IN WHOLE OR IN PART IS STRICTLY FORBIDDEN.

REQ. PER UNIT	USED ON		
	TMC PART NO.	MODEL INSERT	ASSEMBLY NO.
	NP-490-1		
1	NP-490-2	SW 309	A 2460
1	NP 490-3	SW 310	A 2461
1	NP 490-4	SW 311	A 2462
1	NP 490-5	SW 312	A 2463
1	NP 490-6	SW 318	A 2520
1	NP 490-7	SW 422	A 4451
1	NP 490-8	SW 458	A 4709
1	NP 490-9	SW 478	A 4747
1	NP 490-10	SW 477	A 5600

NP 490 E



- NOTE:
- ALL LETTERING, SYMBOLS & BORDER TO BE BLACK.
 - BACKGROUND TO BE ALUMINUM CLEAR ANODIZED.
 - ADHESIVE BACKING, WATER SOLVENT.
 - APPLICATION: PAINTED SURFACE

SW 311

E	NP490-10 ADDED	9/27/76	21466	9/27/76		
D	NP490-9 ADDED	10/3/68	19072	CV		EFM
C	NP490-8 ADDED	1-31-68	18751	R.G.		EFM
B	CHG'D. GRD FR. INNER COND. TO OUT	8-2-66	16703	RME		
A	NP490-7 ADDED	5-31-66	16290	HLA		
SYM	DESCRIPTION	DATE	CH. NO.	DRAFTS	CHECKER	ENG. APP.

REQ.	ITEM	PART NO.	DESCRIPTION	SYMBOL
		.003 TO .005	THE TECHNICAL MATERIEL CORP. MAMARONECK, NEW YORK	
		STOCK SIZE		
		ALUMINUM FOIL		
		MATERIAL	SCHMATIC, DIAGRAM	
			SWITCH JACK, ASSEMBLY	
			G.S. 6-6-62	
		TYPE & TEMPER	DRAWN	CHECKED
		HEATTREAT. SPEC.		FINAL APPROVAL
		SEE NOTE		
		FINISH & SPEC. NO.	ELEC. DES. APP.	MECH. DES. APP.

UNLESS OTHERWISE SPECIFIED:
 DIMENSIONS ARE IN INCHES
 TOLERANCES ON
 FRAC. ± 1/64 DEC. ± .005 ANGLES ± 1/2°

SCALE: **DO NOT SCALE**
 MAXIMUM ALLOWABLE TOLERANCES HAVE BEEN DETERMINED AND ANY DEVIATIONS WILL BE CAUSE FOR REJECTION.
 REMOVE ALL BURRS AND SHARP EDGES

NP 490 E