

IF IT IS FOUND DESIRABLE TO CHANGE ANY TOLERANCE OR OTHER DETAIL SPECIFIED ON THIS DRAWING NOTIFY THE PURCHASER PROMPTLY.

NP10051

MAXIMUM ALLOWABLE TOLERANCES HAVE BEEN DETERMINED AND DEVIATIONS WILL BE CAUSE FOR REJECTION. REMOVE ALL BURRS AND SHARP EDGES

USED ON

MODEL

PROJECT NO.

ASS'Y. NO.

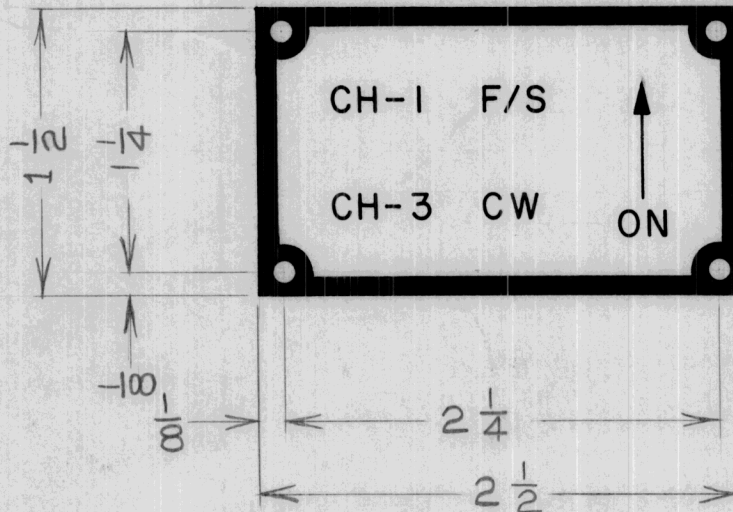
DATE

TIS-2 CE5005

AUG 21/
1959

NOTE:

LETTERING TO BE WHITE ON BLACK BACKGROUND - REVERSE ETCHED.



3/32 DIA HOLES - 4 REQ'D.

REQ.	ITEM	PART NO.	DESCRIPTION	SYMBOL
		.031 TK.	TMC (Canada) LIMITED OTTAWA ONTARIO	
		STOCK SIZE		
		ALUMINUM	CHANNEL DESIGNATOR	
		MATERIAL	TST-2	
		WEIGHT PER PC.		
		ALCAN 2SH " 3SH ALCOA 2SH-18	DCM	
		TYPE & TEMPER	DRAWN	ELEC. DES. APP. MECH. DES. APP.
		HEAT TREAT. SPEC.	CHECKED	FINAL APPROVAL
		SEE NOTE		NP10051
		FINISH & SPEC. NO.		

ISSUE ITEM CHANGED FROM DATE CN. NO. DRAFTS CHECKER ENG. APP.

TOLERANCES

SCALE 1:1

ALL OTHERS

DEC. DIM. ±
FRAC. DIM. ± 1/64
ANGULAR DIM. ±

DRILL, PUNCH, COMMERCIAL STOCK SIZES AND MANUFACTURERS TOLERANCES ARE NOT INCLUDED.