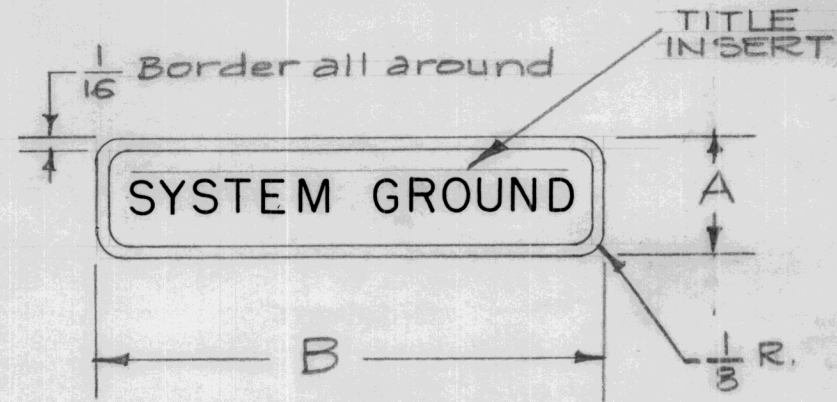


TMC NO.	TITLE INSERT (POSITIONED AS SHOWN BELOW)	LETTER HEIGHT	DIM. "A"	DIM. "B"	USED ON			NP-265	A
					MODEL	ASS'Y. NO.	DATE		
NP-265-1	SYSTEM GROUND	3/16"	5/8"	2-5/8"					
NP-265-2	MODIFICATION S-506	1/8"	1/2"	2"					



NOTE:

1. Aluminum Colored Gothic Lettering (Size as per chart)
2. Background to be black, with Aluminum Border.
3. To be supplied with Adhesive Backing. Must Adhere to Painted Surfaces.

ISSUE	ITEM	CHANGED FROM	DATE	CH. NO.	DRAFTS	CHECKER	ENG. APP.	REQ.	ITEM	PART NO.	DESCRIPTION	SYMBOL
											THE TECHNICAL MATERIEL CORP. MAMARONECK, NEW YORK	
										.003 to .005 THK. STOCK SIZE	NAMEPLATE, INSTRUCTION	
										Aluminum Foil		
										MATERIAL		
A	1	ITEM NP-265-2 ADDED	8-11-60	2747	RU	JCB	[Signature]			Anodized	16 <sup>12/17/58</sup>	[Signature]
										TYPE & TEMPER	DRAWN	CHECKED
										HEAT TREAT. SPEC.		
										FINISH & SPEC. NO.	ELEC. DES. APP.	MECH. DES. APP.
										See Note		
												NP-265
												A