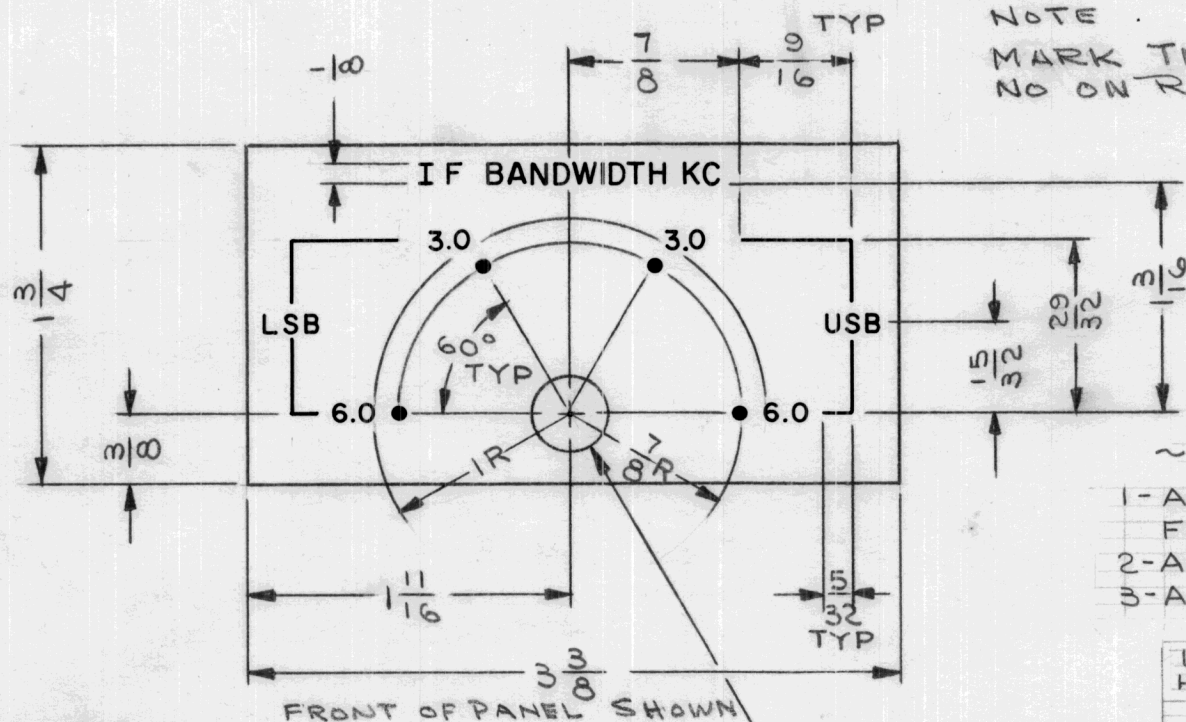


REQ. PER UNIT	USED ON			NP-619 A
	MODEL	ASS'Y. NO.	DATE	
2	SBCI-1A		12-13-63	



NOTE
MARK TMC PART
NO ON REAR OF PANEL

- ~ UNLESS OTHERWISE SPECIFIED ~
- 1- ALL ENGRAVING TO BE 3/32 WHITE FILLED GOTHIC.
 - 2- ALL DOTS TO BE WHT. FILLED.
 - 3- ALL LINES TO BE WHT. FILLED.

LETTER HEIGHT	DEPTH OF STROKE	WIDTH OF STROKE
3/32	.010	.015
1/8	.010	.020
DOTS	.010	1/16 DIA
LINES	.010	.015

MACHINING:
LATERAL BOW OF PANEL MUST BE KEPT TO .031 TOL.
PANEL MUST BE FREE OF ALL MACHINING MARKS.

25/64 DIA. HOLE

- FINISH NOTES:
1. 5404 IRIDITE 14-2 AL-COAT
 2. 3114 ZINC CHROMATE PRIMER } FRONT AND
 3. 3115 SMOOTH GRAY ENAMEL } EDGES ONLY

						REQ. ITEM	PART NO.	R. HAY	DESCRIPTION	SYMBOL
							.051 THK.		THE TECHNICAL MATERIEL CORP.	
							STOCK SIZE		MAMARONECK.	
							ALUMINUM		NEW YORK	
A	PICT. 3.0 WAS 3.5	9/17/65	14841	D.V.	JCB				PLATE, DESIGNATION	
SYM	DESCRIPTION	DATE	CH. NO.	DRAFTS	CHECKER	ENG. APP.	MATERIAL			
	UNLESS OTHERWISE SPECIFIED DIMENSIONS ARE IN INCHES AND INCLUDE CHEMICALLY APPLIED OR PLATED FINISHES	SCALE	1:1				5052-H32	I.L.	HAY 12/24/63	BP
							TYPE & TEMPER	DRAWN	CHECKED	FINAL APPROVAL
							SEE NOTE			
							FINISH & SPEC. NO.	ELEC. DES. APP.	MECH. DES. APP.	NP-619 A