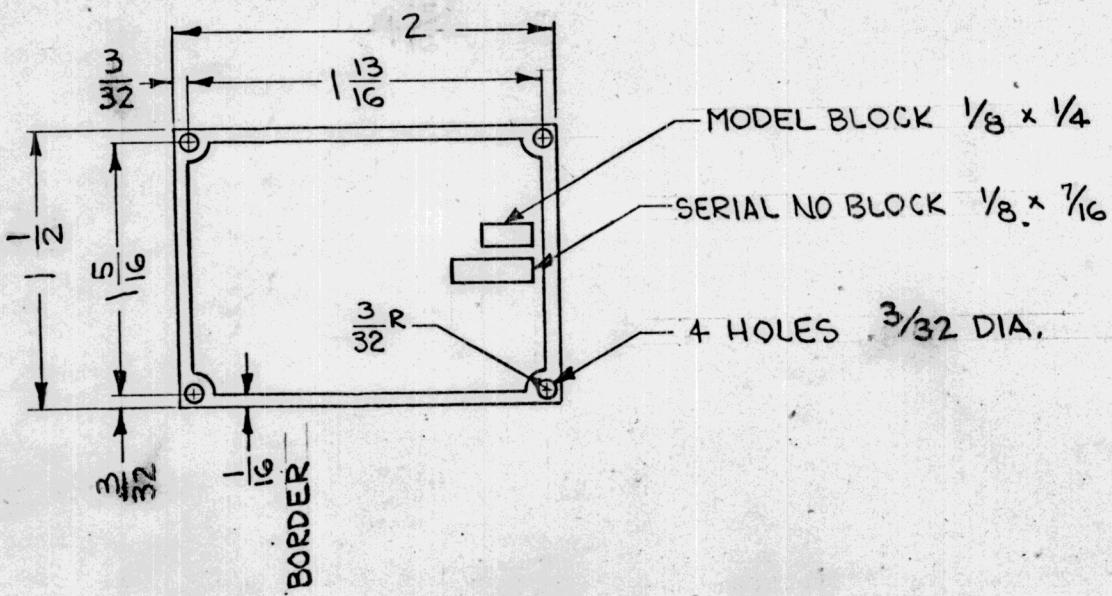
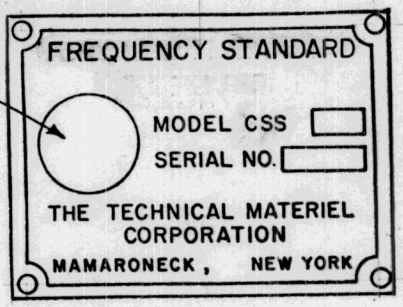


REQ. PER UNIT	USED ON			NP 622	Ø
	MODEL	ASS'Y. NO.	DATE		
1	CSS-2		10-7-63		

TMC GLOBAL INSIGNIA.



NOTES:

**FINISH:** REVERSE ETCH, ANODIZED ON LUSTERLESS BLACK BACKGROUND (TYPE 37038) PER FED. STANDARD NUMBER 595. COLORLESS VARNISH PER MIL-V-6894.

**TYPE FACE:** SPARTAN MEDIUM. SIZE TO FIT SPACE AND LAYOUT. MINIMUM LETTER SIZE- 3/64 HIGH.

APPLICABLE MODEL AND SERIAL NO. WILL BE STAMPED BY TMC.

NAMEPLATE TO BE MANUFACTURED IN ACCORDANCE WITH MIL-P-15024B, TYPE A, 17 JAN. 1957.

REQ.	ITEM	PART NO.	M. GELLMAN			DESCRIPTION	SYMBOL	
Ø	ORIGINAL RELEASE FOR PRODUCTION	6.25.64	Ø	AM		.032 THK	THE TECHNICAL MATERIEL CORP. MAMARONECK, NEW YORK NAMEPLATE, IDENTIFICATION	
X2	OVERALL DIM. CHGD.	1/13/64	X2	JDR	2/23	STOCK SIZE		
X1	3/32 HOLES WERE .076D TYPE & TEMPER WAS 250	1/19/64	X1	GDL	2/23	ALUMINUM		
SYM	DESCRIPTION	DATE	CH. NO.	DRAFTS	CHECKER	ENG. APP.	MATERIAL	
UNLESS OTHERWISE SPECIFIED DIMENSIONS ARE IN INCHES AND INCLUDE CHEMICALLY APPLIED OR PLATED FINISHES		SCALE		1:1				5052-H32
DECIMALS .X ± .05 .XX ± .01 .XXX ± .005		FRACTIONS ± 1/64 ANGLES ± 0° 30'		TOLERANCES		CODE	SEE NOTES	
				A			FINISH & SPEC. NO.	
							ELEC. DES. APP. MECH. DES. APP.	
							NP 622	
							Ø	