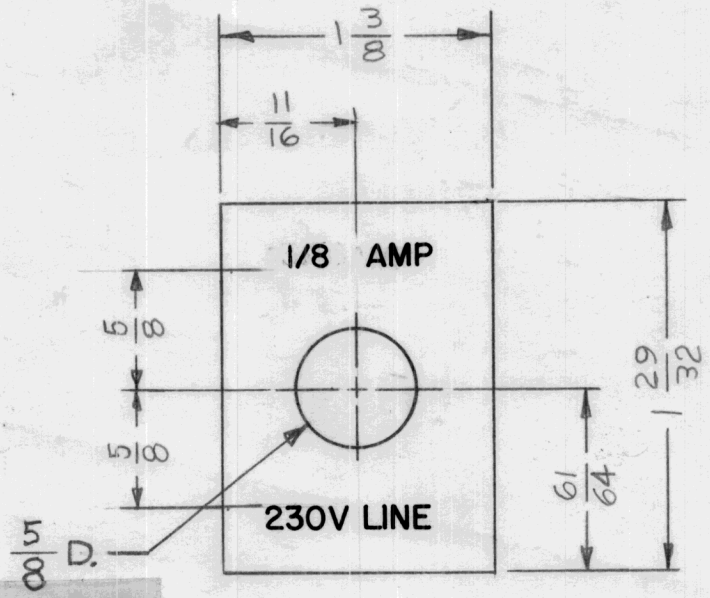


REQ. PER UNIT	USED ON		DATE	NP645	A
	MODEL	ASS'Y. NO.			
1	BSP-1		7-2-64		



LETTER HEIGHT	DEPTH OF STROKE	WIDTH OF STROKE
1/8	.010	.020

- FINISH NOTES:**
1. S404 - IRIDITE 14-2 AL-COAT.
 2. S114 - ZINC CHROMATE PRIMER) FRONT AND
 3. S115 - SMOOTH GRAY ENAMEL) EDGES ONLY
 4. ALL LETTERING TO BE WHITE FILLED GOTHIC.
 5. ALL LINE WORK TO BE WHITE FILLED

						REQ. ITEM	PART NO.	R. HAY	DESCRIPTION	SYMBOL	
A	1/8 AMP WAS 3/16 AMP	4.14.65	13830	g.f.	<i>RB</i>		.051		THE TECHNICAL MATERIEL CORP. MAMARONECK, NEW YORK PLATE, ADAPTOR FUSE		
Ø	ORIGINAL RELEASE FOR PRODUCTION	9.3.64	Ø	g.f.	<i>[Signature]</i>		STOCK SIZE				
X	EXPER RELEASE	7-2-64	X	A.M.	<i>[Signature]</i>		ALUMINUM				
							MATERIAL				
SYM	DESCRIPTION	DATE	CH. NO.	DRAFTS	CHECKER	ENG. APP.	5052-H32	<i>[Signature]</i>	<i>A. Marino</i>	<i>[Signature]</i>	
UNLESS OTHERWISE SPECIFIED DIMENSIONS ARE IN INCHES AND INCLUDE CHEMICALLY APPLIED OR PLATED FINISHES		SCALE		1:1			TYPE & TEMPER	HEAT TREAT. SPEC.	DRAWN	CHECKED	FINAL APPROVAL
DECIMALS .X ± .05 .XX ± .01 .XXX ± .005	TOLERANCES	FRACTIONS ± 1/64 ANGLES ± 0° 30'	CODE A				SEE NOTES			<i>[Signature]</i>	NP645
							FINISH & SPEC. NO.	ELEC. DES. APP.	MECH. DES. APP.	A	