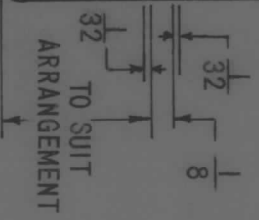
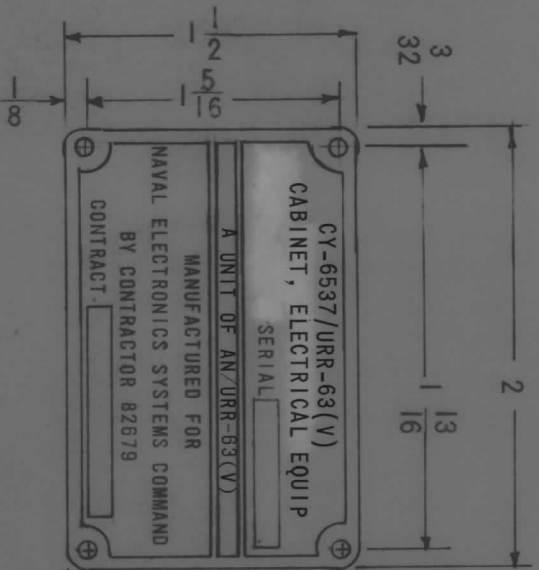


APPLICATION			REVISIONS						
QTY	MODEL USED ON	ASS'Y NO.	LTR	DESCRIPTION	DATE	E.M.N.NO	DRAFT	CHKD	APPD
	RAK125-1		X	EXPERIMENTAL RELEASE	10/8/68		C.V.		
			Ø	ORIG RELEASE FOR PROD	10/8/68		C.V.		



CORNER RADIUS INSIDE AND OUTSIDE: 1/8R
 4 HOLES: 1/8 DIA
 BORDERS: 1/16
 SERIAL BLOCK: 1/8 X 3/4
 CONTRACT BLOCK: 1/8 X 1-1/8

NOTES:

1. FINISH: REVERSE ETCH, LUSTERLESS BLACK (37038) BACKGROUND PER FED-STD-595
2. TYPE FACE: LETTERING TO BE GOTHIC OR SPARTAN; W/MODIFIER (HEAVY, MEDIUM, CONDENSED, ETC) AS REQUIRED TO FIT SPACE.
3. IDENTIFICATION PLATE TO BE MANUFACTURED IN ACCORDANCE WITH MIL-P-15024 AND AMENDS (TYPE A)

UNLESS OTHERWISE SPECIFIED DIMENSIONS ARE IN INCHES AND INCLUDE CHEMICALLY APPLIED OR PLATED FINISHES		REQ'D	ITEM	PART NUMBER	DESCRIPTION	SYM.
DECIMALS .X ± .05 TOLS. .XX ± .01 ANGLES .XXX ± .005 ° 30'		LIST OF MATERIAL				
FRACTIONS 1/64 ° 30'		THE TECHNICAL MATERIEL CORP. MAMARONECK, NEW YORK				
MATERIAL .032 ALUM 5052-H32		PLATE, IDENTIFICATION				
FINISH SEE NOTE						
FINAL APPROVAL MECH. DES. ELECT. DES. CHECKED DRAWN						

NOTICE TO PERSONS RECEIVING THIS DRAWING
 THE TECHNICAL MATERIEL CORPORATION claims proprietary right in the material disclosed hereon. This drawing is issued in confidence for engineering information only and may not be reproduced or used to manufacture anything shown hereon without permission from THE TECHNICAL MATERIEL CORPORATION to the user. This drawing is loaned for mutual assistance and is subject to recall at any time.

SIZE	CODE IDENT. NO.	DWG NO.	SHEET	OF	ISSUE
A	82679	NP 946			Ø
SCALE					