

IF IT IS FOUND DESIRABLE TO CHANGE ANY TOLERANCE OR OTHER DETAIL SPECIFIED ON THIS DRAWING NOTIFY THE PURCHASER PROMPTLY.

# STANDARD DRAWING

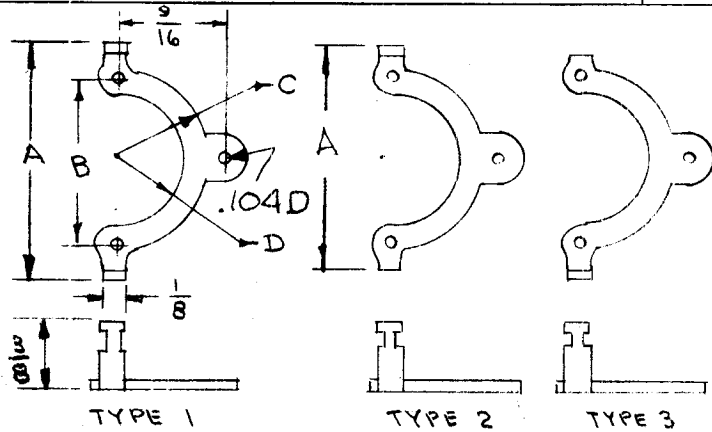
NT-101

B

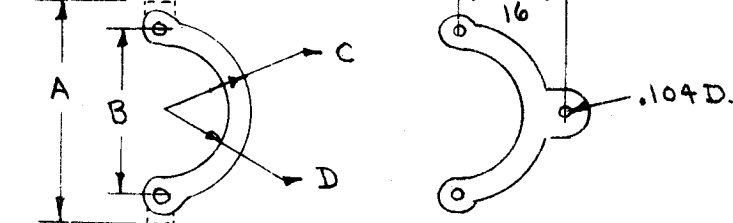
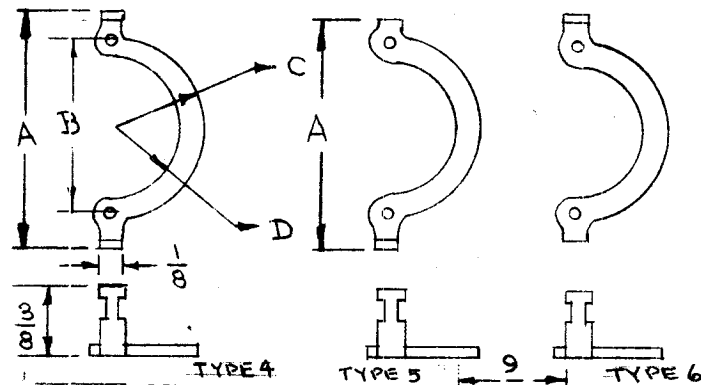
MAXIMUM ALLOWABLE TOLERANCES HAVE BEEN DETERMINED AND DEVIATIONS WILL BE CAUSE FOR REJECTION.  
REMOVE ALL BURRS AND SHARP EDGES

USED ON

MODEL	PROJECT NO.	ASS'Y. NO.	DATE
-------	-------------	------------	------



TMC Part No.	Cinch Part No.	Type	(REF)	B	C	D	Use With Socket
NT-101-1	1031	1	1-1/4	.875	15/32	11/32	TS-102
NT-101-2	1075	2	1-5/32	.875	15/32	11/32	TS-102
NT-101-3	1076	3	1-5/32	.875	15/32	11/32	TS-102
NT-101-4	1060	4	1-1/4	.875	15/32	11/32	TS-102
NT-101-5	11167	4	1-9/16	1.125	17/32	13/32	TS-103
NT-101-6	102	5	1-5/32	.875	15/32	11/32	TS-102
NT-101-7	11512	5	1-15/32	1.125	17/32	13/32	TS-103
NT-101-8	103	6	1-5/32	.875	15/32	11/32	TS-102
NT-101-9	11314	6	1-15/32	1.125	17/32	13/32	TS-103
NT-101-10	1052	7	---	.875	7/16	21/64	TS-102
NT-101-11	11511	7A	1-11/32	1.125	17/32	13/32	TS-103
NT-101-12	1044	8	---	.875	15/32	11/32	TS-102



REF: CINCH

Specification: .064 Brass, Cadmium Plated Mounting Holes to be tapped for No. 4-40 thread.

REQ.	ITEM	PART NO.	DESCRIPTION	SYMBOL
		064	THE TECHNICAL MATERIEL CORP. MAMARONECK, NEW YORK	
		STOCK SIZE		
		BRASS	RETAINER, ELECTRON TUBE SOCKET	
		MATERIAL	Miniature and Naval Sockets	
		WEIGHT PER PC.		
		TYPE & TEMPER	C.O.D. 8-27-52	G.T.O
			DRAWN	ELEC. DES. APP.
		HEAT TREAT. SPEC.	MECH. DES. APP.	
		CADMIUM PLATED	MD 8-27-52	
		FINISH & SPEC. NO.	CHECKED	FINAL APPROVAL
				NT-101

ISSUE	ITEM	CHANGED FROM	DATE	CN. NO.	DRAFTS	CHECKER	ENG. APP.
			2.2.66	17377	WSD	q/s	gc

TOLERANCES		SCALE	
ALL OTHERS:	DEC. DIM. ± FRAC. DIM. ± ANGULAR DIM. ±	DRILL, PUNCH, COMMERCIAL STOCK SIZES AND MANUFACTURERS TOLERANCES ARE NOT INCLUDED.	

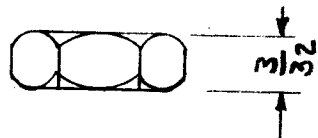
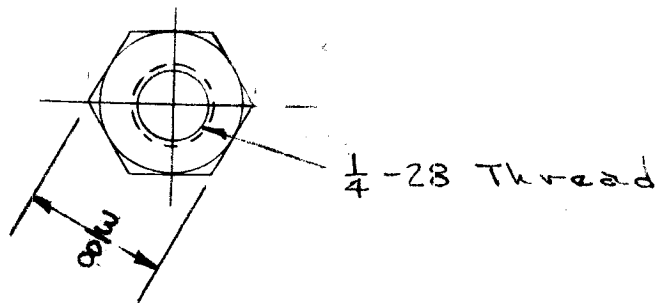
IF IT IS FOUND DESIRABLE TO CHANGE ANY TOLERANCE OR OTHER DETAIL SPECIFIED ON THIS DRAWING NOTIFY THE PURCHASER PROMPTLY.

RELEASED

NT-102 A

MAXIMUM ALLOWABLE TOLERANCES HAVE BEEN DETERMINED AND DEVIATIONS WILL BE CAUSE FOR REJECTION. REMOVE ALL BURRS AND SHARP EDGES

REQ. PER UNIT	USED ON			
	MODEL	PROJECT NO.	ASS'Y. NO.	DATE
	FFR	104	A-157	9-8-52
15	GPR			6-17-53
3	FFRD-1,2,3	E-458-P		4/6/56
4	GPT-10K		A-1625	
2	CRFB-1		A-1625	
2	GPT-750	RTF-2(F/P)	A-1625	



REQ.	ITEM	PART NO.	DESCRIPTION	SYMBOL
		<del>---</del>	THE TECHNICAL MATERIEL CORP. MAMARONECK, NEW YORK	
		STOCK SIZE		
		Brass	NUT - HEX	
		<del>---</del>		
		MATERIAL		
		WEIGHT PER PC.		
		<del>---</del>		
		TYPE & TEMPER	AD-9-8-52	G.T.O.
		<del>---</del>		
		HEAT TREAT. SPEC.		
		BRIGHT NICKEL		
		S-135		
		FINISH & SPEC. NO.		
			CHECKED	FINAL APPROVAL
				NT-102 A

A	2	FINISH WAS CRD. PLATE S-105 DELETED REF. NOTE CAMBRIDGE	326.6A	11114	WB @	jc
ISSUE	ITEM	CHAN ED FROM	DATE	CN. NO.	DRAFTS	CHECKER ENG. APP.

TOLERANCES

SCALE FULL SIZE

ALL OTHERS  
DEC. DIM. ±  
FRAC. DIM. ± 1/64  
AN ULAR DIM. ±

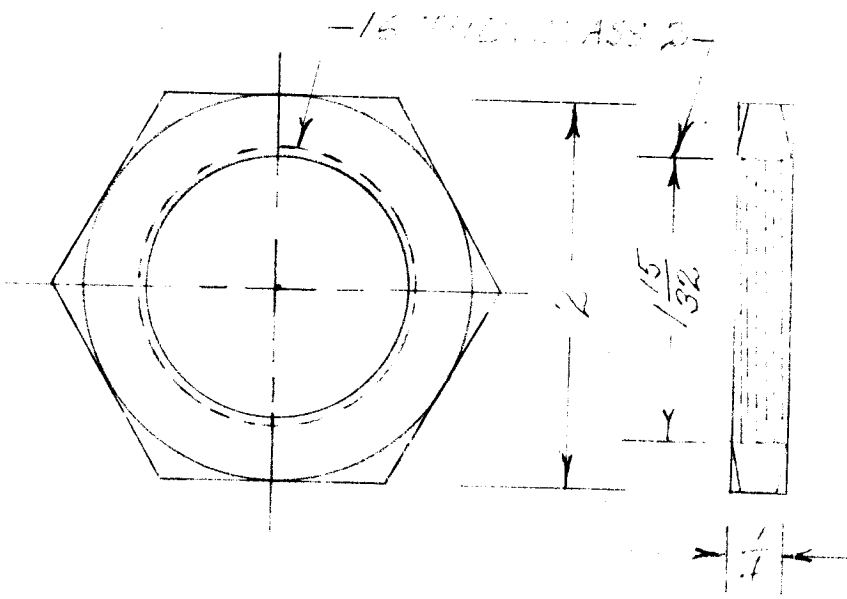
DRILL, PUNCH, COMMERCIAL STOCK  
SIZES AND MANUFACTURERS  
TOLERANCES ARE NOT INCLUDED.

IF IT IS FOUND DESIRABLE TO CHANGE ANY TOLERANCE OR OTHER DETAIL SPECIFIED ON THIS DRAWING NOTIFY THE PURCHASER PROMPTLY.

MAXIMUM ALLOWABLE TOLERANCES HAVE BEEN DETERMINED AND DEVIATIONS WILL BE CAUSE FOR REJECTION. REMOVE ALL BURRS AND SHARP EDGES

NT-103 A

USED ON			
MODEL	PROJECT NO.	ASS'Y. NO.	DATE
	154	A-133	9/4/52



REQ.	ITEM	PART NO.	DESCRIPTION	SYMBOL
			THE TECHNICAL MATERIEL CORP. MAMARONECK, NEW YORK	
		STOCK SIZE	NUT	
		MATERIAL	BRASS	
		WEIGHT PER PC.		
		FREE MACHINING		
		TYPE & TEMPER		
		HEAT TREAT. SPEC.		
		FINISH & SPEC. NO.		

ISSUE	ITEM	CHANGED FROM	DATE	CN. NO.	DRAFTS	CHECKER	ENG. APP.
A		TYPE & TEMPER ADDED	11/14/52				

SCALE S-401-70 - (9652-12)

ALL OTHERS: DEC. DIM. ±, FRAC. DIM. ± 1/64, ANGULAR DIM. ±

DRILL, PUNCH, COMMERCIAL STOCK SIZES AND MANUFACTURERS TOLERANCES ARE NOT INCLUDED.

DRAWN: [Signature]  
ELEC. DES. APP.: [Signature]  
MECH. DES. APP.: [Signature]  
CHECKED: [Signature]  
FINAL APPROVAL: [Signature]

NT-103 A

IF IT IS FOUND DESIRABLE TO CHANGE ANY TOLERANCE OR OTHER DETAIL SPECIFIED ON THIS DRAWING NOTIFY THE PURCHASER PROMPTLY.

# STANDARD DRAWING

NT-104

MAXIMUM ALLOWABLE TOLERANCES HAVE BEEN DETERMINED AND DEVIATIONS WILL BE CAUSE FOR REJECTION. REMOVE ALL BURRS AND SHARP EDGES

USED ON

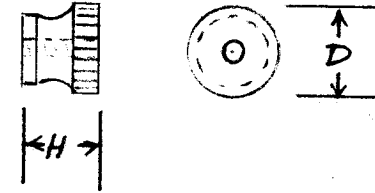
MODEL

PROJECT NO.

ASS'Y. NO.

DATE

TMC No.	THREAD	D	H
NT-104-1	6-32	13/32	9/32
NT-104-2	8-32	7/16	5/16
NT-104-3	10-24	1/2	21/64
NT-104-4	10-32	1/4	21/64



REQ.	ITEM	PART NO.	DESCRIPTION	SYMBOL
		— H —	THE TECHNICAL MATERIEL CORP. MAMARONECK, NEW YORK	
		STOCK SIZE		
		BRASS	NUT, KNURLED	
		MATERIAL	WEIGHT PER PC.	
		— H —		
		TYPE & TEMPER	112-10-17-53	
		— H —	DRAWN	ELEC. DES. APP. MECH. DES. APP.
		HEAT TREAT. SPEC.	CHECKED	FINAL APPROVAL
		5135-NICKEL PLATE		
		FINISH & SPEC. NO.	NT-104	A

A	1	FINISH WAS 6-105	0363	9117			
ISSUE	ITEM	CHANGED FROM	DATE	CN. NO.	DRAFTS	CHECKER	ENG. APP.

TOLERANCES

SCALE

DRILL, PUNCH, COMMERCIAL STOCK SIZES AND MANUFACTURERS TOLERANCES ARE NOT INCLUDED.

ALL OTHERS  
DEC. DIM. ±  
FRAC. DIM. ±  
ANGULAR DIM. ±

IF IT IS FOUND DESIRABLE TO CHANGE ANY TOLERANCE OR OTHER DETAIL SPECIFIED ON THIS DRAWING NOTIFY THE PURCHASER PROMPTLY.

RELEASED

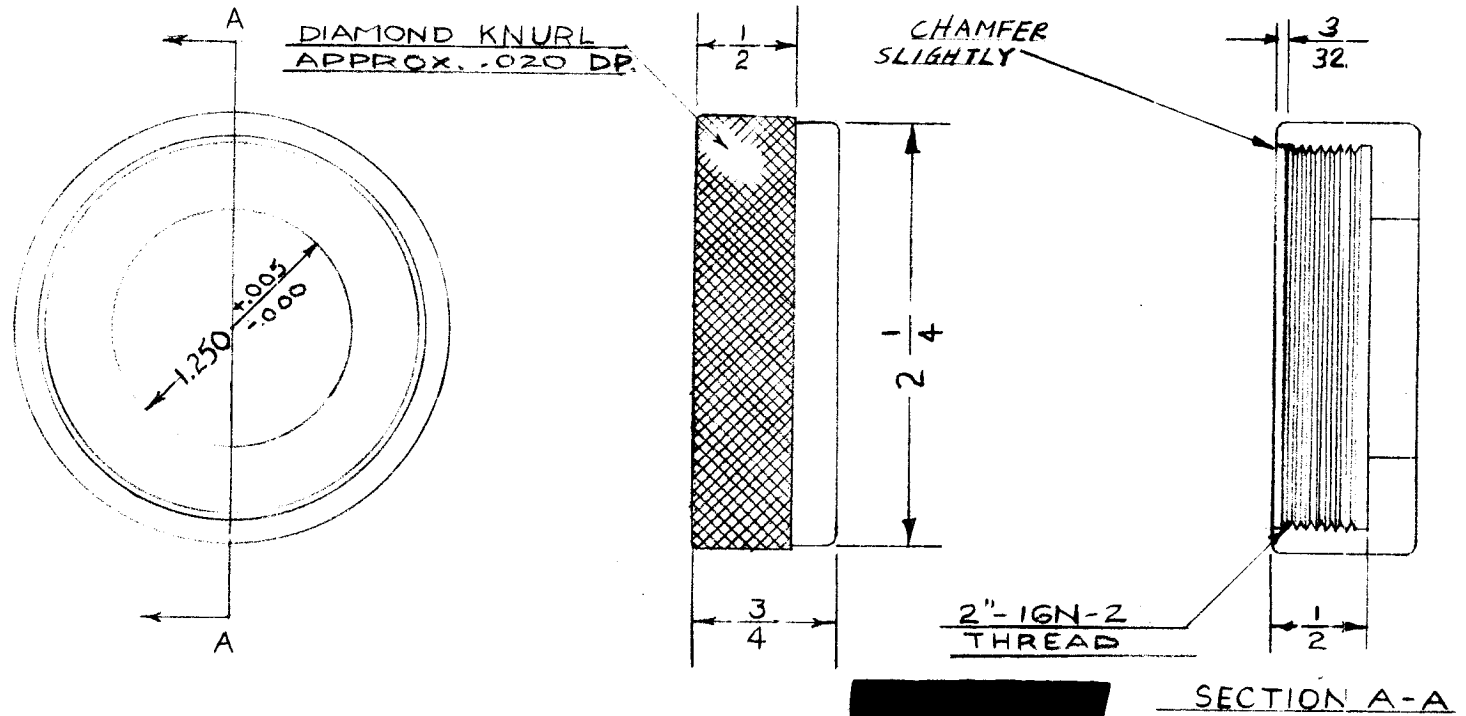
NT-105

A

MAXIMUM ALLOWABLE TOLERANCES HAVE BEEN DETERMINED AND DEVIATIONS WILL BE CAUSE FOR REJECTION. REMOVE ALL BURRS AND SHARP EDGES

USED ON

MODEL	PROJECT NO.	ASS'Y. NO.	DATE
TWR-115	151	A-220	9-3-52



REQ.	ITEM	PART NO.	DESCRIPTION	SYMBOL
		2 1/4 DIA.	THE TECHNICAL MATERIEL CORP. MAMARONECK, NEW YORK	
		STOCK SIZE		
		ALUMINUM	KNURLED NUT	
		MATERIAL		
		115-T3		
		TYPE & TEMPER		
		CAUSTIC DIP		
		S-101		
		FINISH & SPEC. NO.		

ISSUE	ITEM	CHANGED FROM	DATE	CN. NO.	DRAFTS	CHECKER	ENG. APP.
A	1	CHAMFER ADDED	7-9-52	1			<i>PJM</i>

TOLERANCES	SCALE
DEC. DIM. ± FRAC. DIM. ± 1/64 ANGULAR DIM. ±	FULL SIZE

ALL OTHERS	DRILL, PUNCH, COMMERCIAL STOCK SIZES AND MANUFACTURERS TOLERANCES ARE NOT INCLUDED.

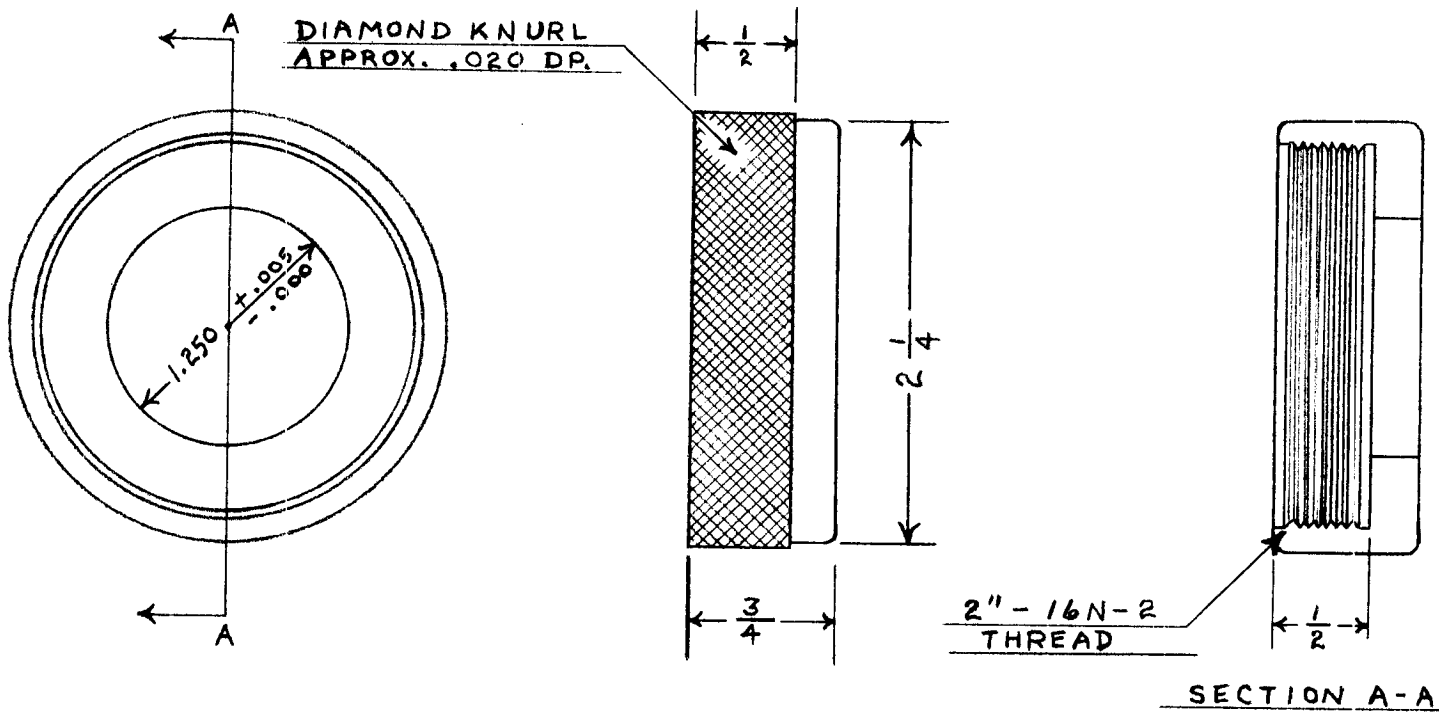
DRAWN	ELEC. DES. APP.	MECH. DES. APP.
<i>WDC</i>		<i>PJM</i>
CHECKED	FINAL APPROVAL	
	NT-105	

IF IT IS FOUND DESIRABLE TO CHANGE ANY TOLERANCE OR OTHER DETAIL SPECIFIED ON THIS DRAWING NOTIFY THE PURCHASER PROMPTLY.

NT-105

MAXIMUM ALLOWABLE TOLERANCES HAVE BEEN DETERMINED AND DEVIATIONS WILL BE CAUSE FOR REJECTION. REMOVE ALL BURRS AND SHARP EDGES

TWR-115		USED ON		
MODEL	PROJECT NO.	ASS'Y. NO.	DATE	



REQ.	ITEM	PART NO.	DESCRIPTION	SYMBOL
		2 1/4 DIA.	TMC (Canada) LIMITED OTTAWA ONTARIO	
		STOCK SIZE		
		ALUMINUM	KNURLED NUT	
		MATERIAL	TAPE WINDING	
		11S-T3	AT 6/5/55	
		TYPE & TEMPER	DRAWN	ELEC. DES. APP. MECH. DES. APP.
		—H—	CHECKED	FINAL APPROVAL
		HEAT TREAT. SPEC.		
		CAUSTIC DIP S-101		
		FINISH & SPEC. NO.		NT-105

ISSUE	ITEM	CHANGED FROM	DATE	CN. NO.	DRAFTS	CHECKER	ENG. APP.
TOLERANCES			SCALE FULL SIZE				
ALL OTHERS	DEC. DIM. ± FRAC. DIM. ± 1/64 ANGULAR DIM. ±	DRILL, PUNCH, COMMERCIAL STOCK SIZES AND MANUFACTURERS TOLERANCES ARE NOT INCLUDED.					

IF IT IS FOUND DESIRABLE TO CHANGE ANY TOLERANCE OR OTHER DETAIL SPECIFIED ON THIS DRAWING NOTIFY THE PURCHASER PROMPTLY.

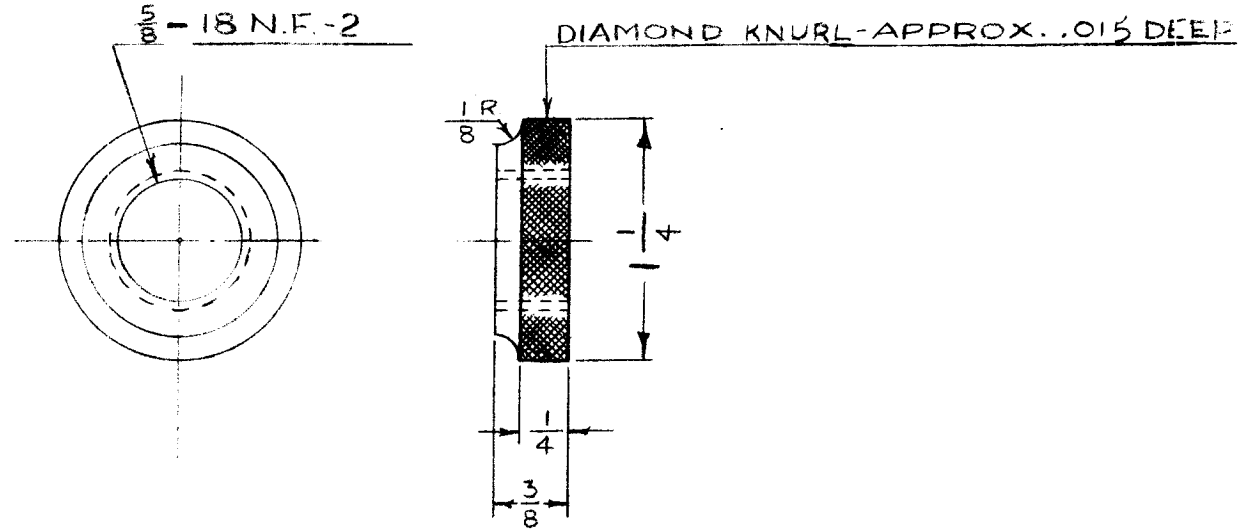
RELEASED

NT-106

MAXIMUM ALLOWABLE TOLERANCES HAVE BEEN DETERMINED AND DEVIATIONS WILL BE CAUSE FOR REJECTION. REMOVE ALL BURRS AND SHARP EDGES

USED ON

MODEL	PROJECT NO.	ASS'Y. NO.	DATE
TWR-115	151	A-222	9-13-52



REQ.	ITEM	PART NO.	DESCRIPTION	SYMBOL
		1/4 D.	THE TECHNICAL MATERIEL CORP.	
		STOCK SIZE	MAMARONECK. NEW YORK	
		STAINLESS STEEL	REEL LOCKING NUT	
		MATERIAL		
		WEIGHT PER PC.		
		303 OR 416		
		TYPE & TEMPER		
		HEAT TREAT. SPEC.		
		PASSIVATE - S-104		
		FINISH & SPEC. NO.		

ISSUE	ITEM	CHANGED FROM	DATE	CN. NO.	DRAFTS	CHECKER	ENG. APP.
TOLERANCES		SCALE FULL SIZE					
ALL OTHERS	DEC. DIM. ± .005	DRILL, PUNCH, COMMERCIAL STOCK SIZES AND MANUFACTURERS TOLERANCES ARE NOT INCLUDED.					
	FRAC. DIM. ± 64						
	ANGULAR DIM. ±						

DRAWN: *R. J. Baker*  
 ELEC. DES. APP.: *[Signature]*  
 MECH. DES. APP.: *[Signature]*  
 CHECKED: *J. A. [Signature]* 11/6/52  
 FINAL APPROVAL:

NT-106

IF IT IS FOUND DESIRABLE TO CHANGE ANY TOLERANCE OR OTHER DETAIL SPECIFIED ON THIS DRAWING NOTIFY THE PURCHASER PROMPTLY.

NT-106

MAXIMUM ALLOWABLE TOLERANCES HAVE BEEN DETERMINED AND DEVIATIONS WILL BE CAUSE FOR REJECTION. REMOVE ALL BURRS AND SHARP EDGES

TWRHIS

USED ON

MODEL

PROJECT NO.

ASS'Y. NO.

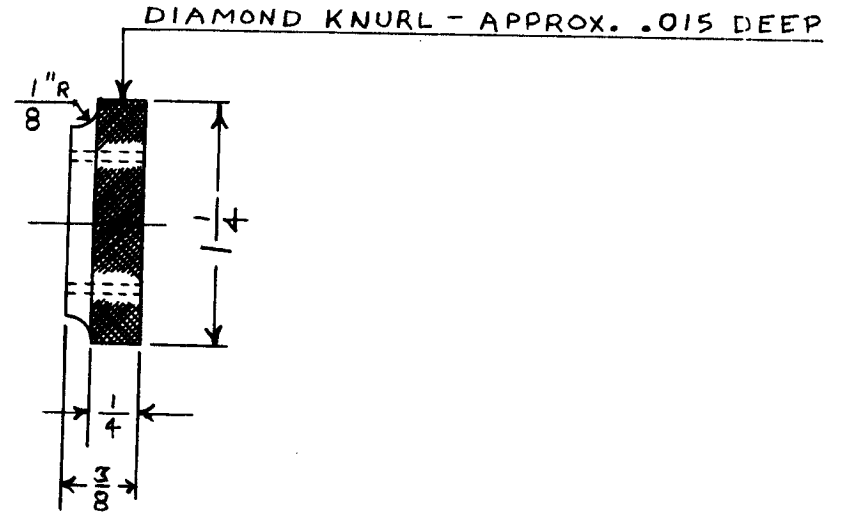
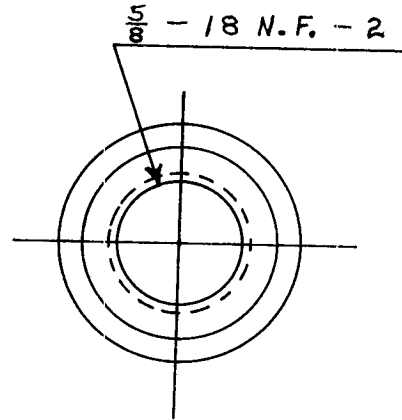
DATE

**NOTICE TO PERSONS RECEIVING THIS DRAWING**

THE TECHNICAL MATERIEL CORPORATION claims proprietary right in the material disclosed hereon. This drawing is issued in confidence for engineering information only and may not be reproduced or used to manufacture anything shown hereon without permission from THE TECHNICAL MATERIEL CORPORATION to the user. This drawing is loaned for mutual assistance and is subject to recall at any time.

Property of:

THE TECHNICAL MATERIEL CORPORATION  
MAMARONECK, NEW YORK



REQ.	ITEM	PART NO.	DESCRIPTION	SYMBOL
		1/4 D.	TMC (Canada) LIMITED OTTAWA ONTARIO	
		STOCK SIZE	REEL LOCKING NUT	
		MATERIAL	TAPE WINDING	
		WEIGHT PER PC.	RT 11/5/55	
		303 OR 416		
		TYPE & TEMPER	DRAWN	ELEC. DES. APP. MECH. DES. APP.
		HEAT TREAT. SPEC.	CHECKED	FINAL APPROVAL
		FINISH & SPEC. NO.		NT-106

ISSUE	ITEM	CHANGED FROM	DATE	CN. NO.	DRAFTS	CHECKER	ENG. APP.
TOLERANCES		SCALE FULL SIZE					
ALL OTHERS	DEC. DIM. ± 0.005 FRAC. DIM. ± 1/64 AN ULAR DIM. ±	DRILL, PUNCH, COMMERCIAL STOCK SIZES AND MANUFACTURERS TOLERANCES ARE NOT INCLUDED.					



IF IT IS FOUND DESIRABLE TO CHANGE ANY TOLERANCE OR OTHER DETAIL SPECIFIED ON THIS DRAWING NOTIFY THE PURCHASER PROMPTLY.

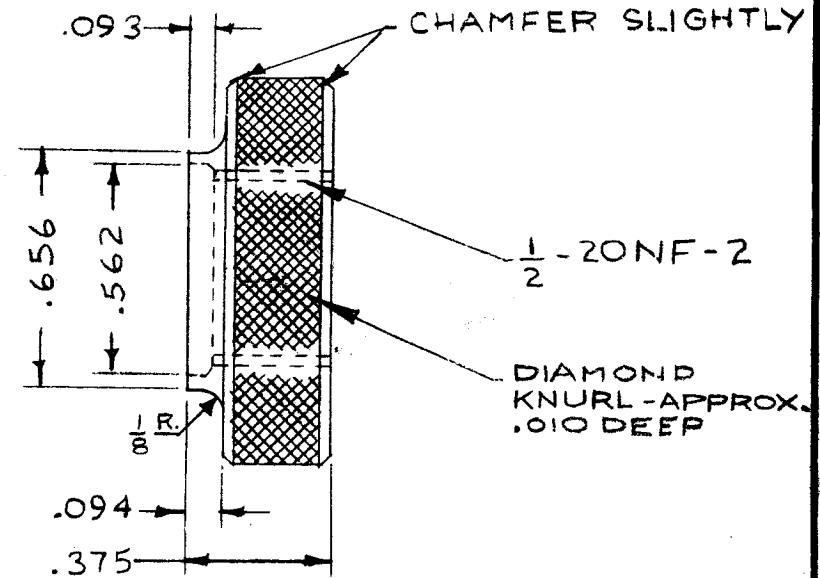
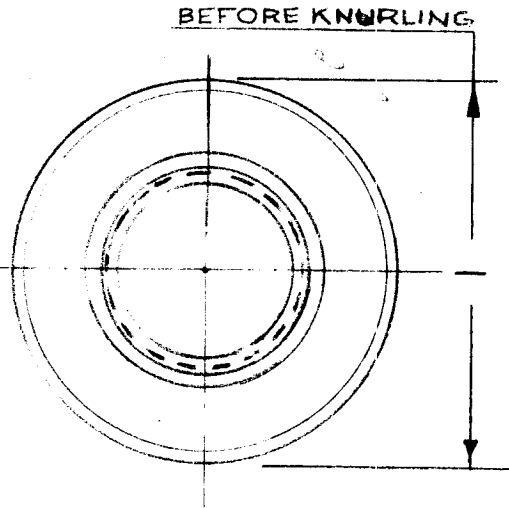
RELEASED

NT-107  $\emptyset$

MAXIMUM ALLOWABLE TOLERANCES HAVE BEEN DETERMINED AND DEVIATIONS WILL BE CAUSE FOR REJECTION. REMOVE ALL BURRS AND SHARP EDGES

USED ON

MODEL	PROJECT NO.	ASS'Y. NO.	DATE
R-8	168	A-290	12-2-52
R-10	168	A-290	12-2-52
R-12	168	A-290	12-2-52



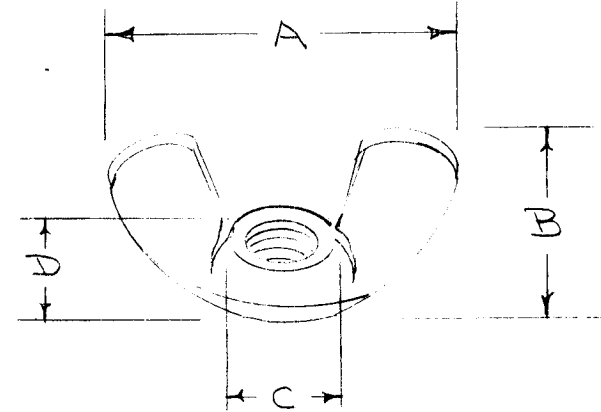
REQ.	ITEM	PART NO.	DESCRIPTION	SYMBOL
		1" DIA.	THE TECHNICAL MATERIEL CORP. MAMARONECK, NEW YORK	
		STOCK SIZE		
		ALUMINUM	KNURLED NUT	
		MATERIAL		
		11S-T3		
		TYPE & TEMPER.	16 12-2-52	
		HEAT TREAT. SPEC.	DRAWN	ELEC. DES. APP. MECH. DES. APP.
		(S-120) BLACK ANODIZE	12-18-52	9/26/53
		FINISH & SPEC. NO.	CHECKED	FINAL APPROVAL

$\emptyset$	ORIGINAL RELEASE	9/26/53					
ISSUE	ITEM	CHANGED FROM	DATE	CN. NO.	DRAFTS	CHECKER	ENG. APP.
TOLERANCES			SCALE 2" TO 1"				
ALL OTHERS	DEC. DIM. $\pm .005$ FRAC. DIM. $\pm 1/64$ ANGULAR DIM. $\pm$		DRILL, PUNCH, COMMERCIAL STOCK SIZES AND MANUFACTURERS TOLERANCES ARE NOT INCLUDED.				

NT-107  $\emptyset$

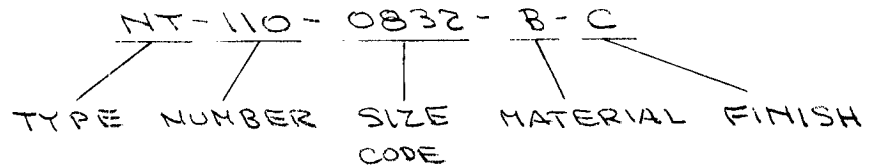
THREAD SIZE	SIZE CODE	DIMENSIONS			
		A	B	C	D
A-40	0440				
6-32	0632	27/32	13/32	13/32	5/32
6-40	0640	"	"	"	"
8-32	0832	"	"	"	"
10-24	1024	"	"	"	"
10-32	1032	"	"	"	"
12-24	1224	"	"	"	"
1/4-20	1420	1 1/32	1/2	1/2	7/32
1/4-24	1424	"	"	"	"
1/4-28	2528	"	"	"	"
1/4-28	2528	"	"	"	"
5/16-18	3118	13/16	19/32	9/16	1/4
5/16-24	3124	"	"	"	"
3/8-16	3716	13/8	23/32	1/16	5/16
3/8-24	3724	"	"	"	"
7/16-14	4314	1 1/8	15/16	29/32	3/8
1/2-13	5013	"	"	"	"

LETTER	MATERIAL	REQ. PER UNIT	USED ON		
			MODEL	ASS'Y. NO.	DATE
A	ALUMINUM				
B	BRASS				
S	STEEL				
SS	STAINLESS STEEL				
LETTER	FINISH				
B	BLACK NICKEL				
C	CAD. PLATE				
N	BRIGHT NICKEL				
R	NO FINISH				
P	PASSIVATE (STAINLESS ONLY)				



**STANDARD DRAWING**

TYPE DESIGNATION TO BE IN FOLLOWING FORM



NOTE - DIMENSIONS ARE FOR REFERENCE ONLY.

ISSUE	ITEM	CHANGED FROM	DATE	CH. NO.	DRAFTS	CHECKER	ENG. APP.	REQ. ITEM	PART NO.	DESCRIPTION	SYMBOL			
A	5	NT-110-4 WAS 10-32								<b>THE TECHNICAL MATERIEL CORP.</b> <b>MAMARONECK, NEW YORK</b>  <b>NUT, WING</b>	A			
	4	NT-110-3 WAS 8-32												
A	3	NT-110-2 WAS 6-32												
	2	NT-110-1 WAS 4-40												
A	1	COMPLETE REVISION												
<b>TOLERANCES</b> DEC. DIM. ± FRAC. DIM. ± ANGULAR DIM. ±								<b>SCALE:</b> MAXIMUM ALLOWABLE TOLERANCES HAVE BEEN DETERMINED AND ANY DEVIATIONS WILL BE CAUSE FOR REJECTION. REMOVE ALL BURRS AND SHARP EDGES				CDD 148/55 DRAWN CHECKED FINAL APPROVAL MECH. DES. APP.		
								TYPE & TEMPER HEAT TREAT. SPEC.		FINISH & SPEC. NO.		ELEC. DES. APP. MECH. DES. APP.		NT-110 A

IF IT IS FOUND DESIRABLE TO CHANGE ANY TOLERANCE OR OTHER DETAIL SPECIFIED ON THIS DRAWING NOTIFY THE PURCHASER PROMPTLY.

NT-111

MAXIMUM ALLOWABLE TOLERANCES HAVE BEEN DETERMINED AND DEVIATIONS WILL BE CAUSE FOR REJECTION. REMOVE ALL BURRS AND SHARP EDGES

REQ. PER UNIT

USED ON

MODEL

PROJECT NO.

ASS'Y. NO.

DATE

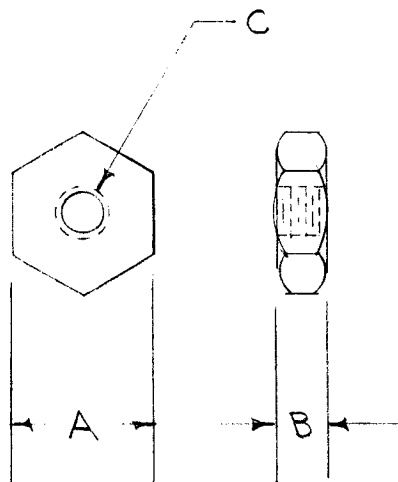
TMC-NO.	A	B	C	MATERIAL	REQ. PER UNIT
NT-111-1	7/16	1/4	1/4 X 20	BRASS	4
NT-111-2	7/16	3/16	1/4 X 20	STEEL	2

KS-85-X

A-227

A-499

4-27-54



REQ.	ITEM	PART NO.	DESCRIPTION	SYMBOL
		#	THE TECHNICAL MATERIEL CORP. MAMARONECK. NEW YORK	
		STOCK SIZE		
	SEE ABOVE	#	NUT, HEX	
		MATERIAL	WEIGHT PER PC.	
		#		
		TYPE & TEMPER	CDD 4-27-54	
		#	DRAWN	ELEC. DES. APP. MECH. DES. APP.
		HEAT TREAT. SPEC.	FAI	
		S-105 CADMIUM PLATE -002	CHECKED	FINAL APPROVAL
		FINISH & SPEC. NO.		NT-111

ISSUE ITEM CHANGED FROM DATE CN. NO. DRAFTS CHECKER ENG. APP.

TOLERANCES

SCALE #

ALL OTHERS  
DEC. DIM. ±  
FRAC. DIM. ±  
ANGULAR DIM. ±

DRILL, PUNCH, COMMERCIAL STOCK SIZES AND MANUFACTURERS TOLERANCES ARE NOT INCLUDED.

IF IT IS FOUND DESIRABLE TO CHANGE ANY TOLERANCE OR OTHER DETAIL SPECIFIED ON THIS DRAWING NOTIFY THE PURCHASER PROMPTLY.

# STANDARD DRAWING

NT-112

MAXIMUM ALLOWABLE TOLERANCES HAVE BEEN DETERMINED AND DEVIATIONS WILL BE CAUSE FOR REJECTION. REMOVE ALL BURRS AND SHARP EDGES

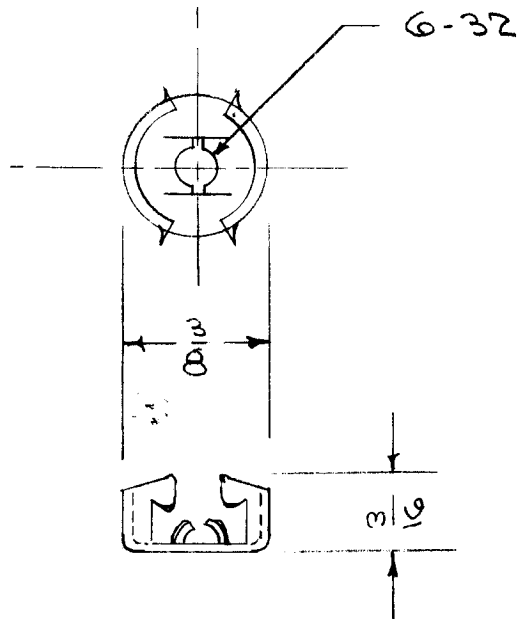
USED ON

MODEL

PROJECT NO.

ASS'Y. NO.

DATE



REF: TINNEMAN PRODUCTS CO. #C6711-632-24

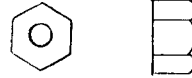
REQ.	ITEM	PART NO.	DESCRIPTION	SYMBOL
		.017	THE TECHNICAL MATERIEL CORP. MAMARONECK. NEW YORK	
		STOCK SIZE		
		STEEL	NUT, SPEED ROUND TYPE	
		MATERIAL		
		SPRING	C.D.D. 12-8-54 P.L.K. 1-28-55	
		WEIGHT PER PC.		
		TYPE & TEMPER	DRAWN	ELEC. DES. APP.
		HEAT TREATED		
		HEAT TREAT. SPEC.	CHECKED	MECH. DES. APP.
		CADMIUM PLATE		
		.0002	FINAL APPROVAL	NT-112
		FINISH & SPEC. NO.		

ISSUE	ITEM	CHANGED FROM	DATE	CN. NO.	DRAFTS	CHECKER	ENG. APP.
TOLERANCES			SCALE				
ALL OTHERS	DEC. DIM. ± FRAC. DIM. ± ANGULAR DIM. ±	DRILL, PUNCH, COMMERCIAL STOCK SIZES AND MANUFACTURERS TOLERANCES ARE NOT INCLUDED.					

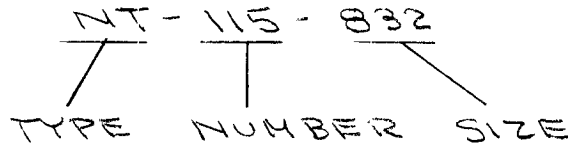
# STANDARD DRAWING

CAT. NO	SIZE
N-632-X	0632
N-832-X	0832
N-1032-X	1032

REQ. PER UNIT	USED ON			NT-115
	MODEL	ASS'Y. NO.	DATE	



TYPE DESIGNATION TO BE IN FOLLOWING FORM

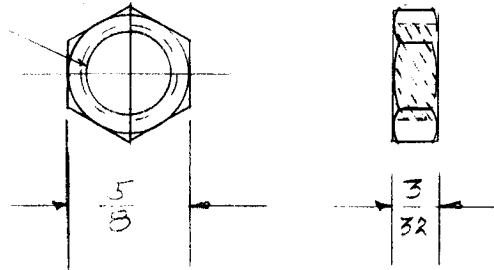


REF: WECKESSER CO. OR EQUIVALENT

								REQ. ITEM	PART NO.	DESCRIPTION	SYMBOL					
										<b>THE TECHNICAL MATERIEL CORP.</b> MAMARONECK, NEW YORK  NUT, BLACK NYLON MOLDED						
								STOCK SIZE								
								MATERIAL								
ISSUE	ITEM	CHANGED FROM	DATE	CH. NO.	DRAFTS	CHECKER	ENG. APP.									
TOLERANCES			SCALE:							CDD 1/26/56	<i>[Signature]</i>	<i>[Signature]</i>				
DEC. DIM. ±			MAXIMUM ALLOWABLE TOLERANCES HAVE BEEN DETERMINED AND ANY DEVIATIONS WILL BE CAUSE FOR REJECTION. REMOVE ALL BURRS AND SHARP EDGES					TYPE & TEMPER		HEAT TREAT. SPEC.	DRAWN	CHECKED	FINAL APPROVAL			
FRAC. DIM. ±															<i>[Signature]</i>	NT-115
ANGULAR DIM. ±												FINISH & SPEC. NO.		ELEC. DES. APP.	MECH. DES. APP.	

REQ. PER UNIT	USED ON			NT-116
	MODEL	ASS'Y. NO.	DATE	
2	RTF		2/16/56	

7/16 - 20 CLASS 2



REF: PM-400

REQ. ITEM	PART NO.	DESCRIPTION	SYMBOL
	5/8 HEX STOCK SIZE	THE TECHNICAL MATERIEL CORP. MAMARONECK, NEW YORK	
	BRASS	NUT	
	MATERIAL	F/P	
ISSUE	ITEM	CHANGED FROM	DATE
TOLERANCES		SCALE:	
DEC. DIM. ±	MAXIMUM ALLOWABLE TOLERANCES HAVE BEEN DETERMINED AND ANY DEVIATIONS WILL BE CAUSE FOR REJECTION.		
FRAC. DIM. ±	REMOVE ALL BURRS AND SHARP EDGES		
ANGULAR DIM. ±			
	FREE TURNING	AM	AADE
	TYPE & TEMPER	HEAT TREAT. SPEC.	DRAWN
	NICKEL PLATE S-135		CHECKED
	FINISH & SPEC. NO.	ELEC. DES. APP.	MECH. DES. APP.
			2/17/56
			NT-116

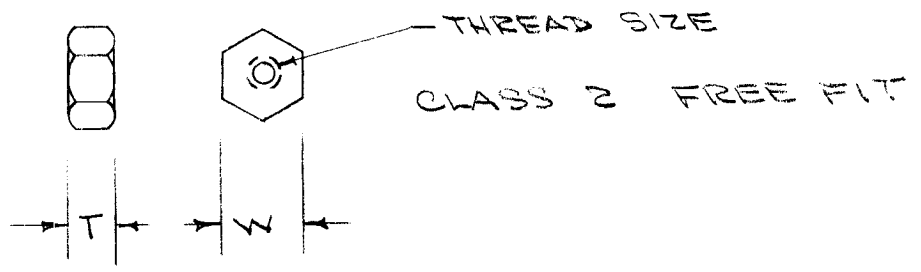
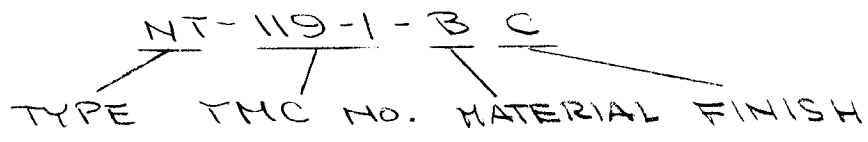
TMC NO.	THREAD SIZE	W (WIDTH)	T (THICKNESS)
NT-119-1	1/4-20	7/16	9/64
-2	1/4-20	7/16	1/4
-3	3/8-16	5/8	13/64
-4	1 9/16-16	2 1/4	7/16
-5			
-6			
-7			
-8			
-9			
-10			
-11			
-12			
-13			
-14			
-15			

MATERIAL	CODE	FINISH	CODE
ALUMINUM	A	CADMIUM	C
BRASS	B	BR. NICKEL	N
STEEL	S	BLK. NICKEL	B
STAINLESS STEEL	T	NO FINISH	R
		PASSIVATE (STAINLESS ONLY)	S

USED ON  
 MODEL      ASS'Y. NO.      DATE  
 NT-119      B

NOTE:  
 USE STANDARD DWG.  
 NTH --- WHENEVER  
 POSSIBLE.

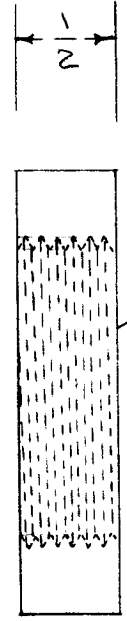
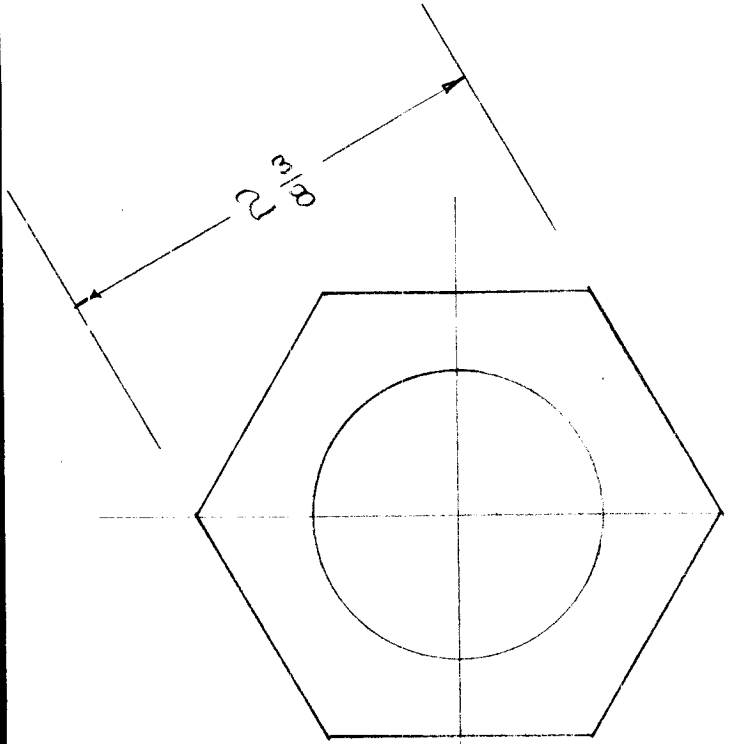
TYPE DESIGNATION TO BE IN FOLLOWING FORM



ISSUE	ITEM	CHANGED FROM	DATE	CH. NO.	DRAFTS	CHECKER	ENG. APP.	REQ. ITEM	PART NO.	DESCRIPTION	SYMBOL		
B		NT-119-4 ADDED	6-27-62	6833	R.T.	<i>HD</i>	<i>WB</i>			THE TECHNICAL MATERIEL CORP. MAMARONECK, NEW YORK HEX NUT, DOUBLE CHAMFER SPECIAL			
A	1	NT-119-3 ADDED	9-12-61	5559	<i>EH</i>	<i>AB</i>	<i>AB</i>						
TOLERANCES			SCALE:					TYPE & TEMPER		HEAT TREAT. SPEC.	DRAWN	CHECKED	FINAL APPROVAL
DEC. DIM. ± FRAC. DIM. ± ANGULAR DIM. ±			MAXIMUM ALLOWABLE TOLERANCES HAVE BEEN DETERMINED AND ANY DEVIATIONS WILL BE CAUSE FOR REJECTION. REMOVE ALL BURRS AND SHARP EDGES					FINISH & SPEC. NO.		ELEC. DES. APP.	MECH. DES. APP.	NT-119	B

REQ. PER UNIT	USED ON		
	MODEL	ASSY. NO.	DATE
1		A-1410	4-19-57

NT-120 SA



THREADS 1/16 X 16  
NC 2  
AFTER PLATING

ISSUE	ITEM	CHANGED FROM	DATE	CH. NO.	DRAFTS	CHECKER	ENG. APP.	REQ. ITEM	PART NO.	DESCRIPTION	SYMBOL		
										<b>THE TECHNICAL MATERIEL CORP. MAMARONECK, NEW YORK</b> NUT, BULK HEAD MOUNTING FOR A-1410	SA		
		ORIGINAL RELEASE	9/6/69		(3)								
TOLERANCES			SCALE: 1X1							EDD 4/19/57			
DEC. DIM. ±		FRAC. DIM. ±		ANGULAR DIM. ±		MAXIMUM ALLOWABLE TOLERANCES HAVE BEEN DETERMINED AND ANY DEVIATIONS WILL BE CAUSE FOR REJECTION. REMOVE ALL BURRS AND SHARP EDGES			TYPE & TEMPER CADMIUM PLATED 45/ YELLOW IRIDITE	HEAT TREAT. SPEC.	DRAWN	CHECKED	FINAL APPROVAL
								FINISH & SPEC. NO.		ELEC. DES. APP.	MECH. DES. APP.	NT-120 SA	

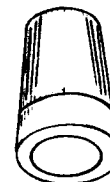


CATALOG NUMBER	SIZE	
30-915	71 B	No. 16 & No. 18 up to 3 No. 18; 1 No. 16 & 1 No. 18
30-917	73 B	No. 14, 16 & 18 up to 2 No. 14 and 1 No. 18 or 5 No. 18
30-918	74 B	No. 12, 14, 16 & 18 up to 2 No. 12 and 1 No. 18; 4 No. 14 and 1 No. 18
30-919	76 B	No. 10, 12, 14, 16 and 18 up to 3 No. 10 with 1 No. 18; 4 No. 12 with 2 No. 18; 6 No. 14 with 2 No. 18
30-183	83	Hi-Volt, approved up to 600 V.; 2 No. 18 to 2 No. 14 and 1 No. 18

REQ. PER UNIT	USED ON		
	MODEL	ASSY. NO.	DATE
2	A-1421		8-9-57

NT-121

# STANDARD DRAWING



NOMENCLATURE TO BE AS FOLLOWS:

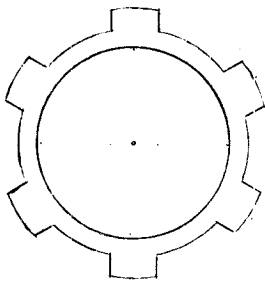
NT-121 - 71-B  
 TMC DWG. NO.      SIZE

Ref: General Electric Supply Corp.

REQ.	ITEM	PART NO.	DESCRIPTION	SYMBOL															
			THE TECHNICAL MATERIEL CORP. MAMARONECK. NEW YORK																
			STOCK SIZE																
			MOLDED COMPOSITION																
			MATERIAL																
			WIRE - NUTS																
ISSUE	ITEM	CHANGED FROM	DATE	CH. NO.	DRAFTS	CHECKER	ENG. APP.												
TOLERANCES								SCALE:											
DEC. DIM. ± FRAC. DIM. ± ANGULAR DIM. ±								MAXIMUM ALLOWABLE TOLERANCES HAVE BEEN DETERMINED AND ANY DEVIATIONS WILL BE CAUSE FOR REJECTION. REMOVE ALL BURRS AND SHARP EDGES											
								TYPE & TEMPER		HEAT TREAT. SPEC.		DRAWN		CHECKED		FINAL APPROVAL			
								FINISH & SPEC. NO.		ELEC. DES. APP.		MECH. DES. APP.		NT-121					

REQ. PER UNIT	USED ON		
	MODEL	ASS'Y. NO.	DATE
2	TLI - 1	A-1438	7-15-57
2	TLI - 1	A-1485	11-14-57

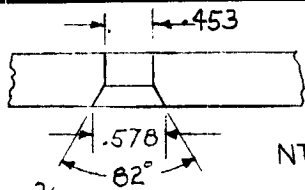
NT-122



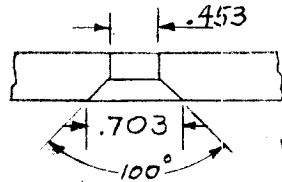
MATERIAL  
STAMPED STEEL, WHITE, HOT  
DIPPED GALVANIZED.

GENERAL ELECTRIC SUPPLY CORP.  
CATALOG NO. SP-142

REQ.	ITEM	PART NO.	DESCRIPTION	SYMBOL					
			THE TECHNICAL MATERIEL CORP. MAMARONECK, NEW YORK						
		STOCK SIZE	3/4" LOCKNUT						
		MATERIAL							
ISSUE	ITEM	CHANGED FROM	DATE	CH. NO.	DRAFTS	CHECKER	ENG. APP.		
TOLERANCES			SCALE:						
DEC. DIM. ± FRAC. DIM. ± ANGULAR DIM. ±			MAXIMUM ALLOWABLE TOLERANCES HAVE BEEN DETERMINED AND ANY DEVIATIONS WILL BE CAUSE FOR REJECTION. REM VE ALL BURRS AND SHARP EDGES						
TYPE & TEMPER		HEAT TREAT. SPEC.	DRAWN	CHECKED	FINAL APPROVAL				
SEE NOTE									
FINISH & SPEC. NO.		ELEC. DES. APP.	MECH. DES. APP.						
									NT-122



FOR 3/16 MATERIAL

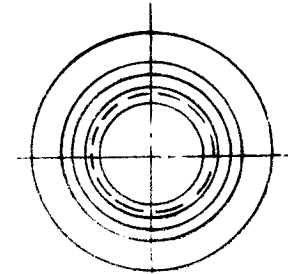
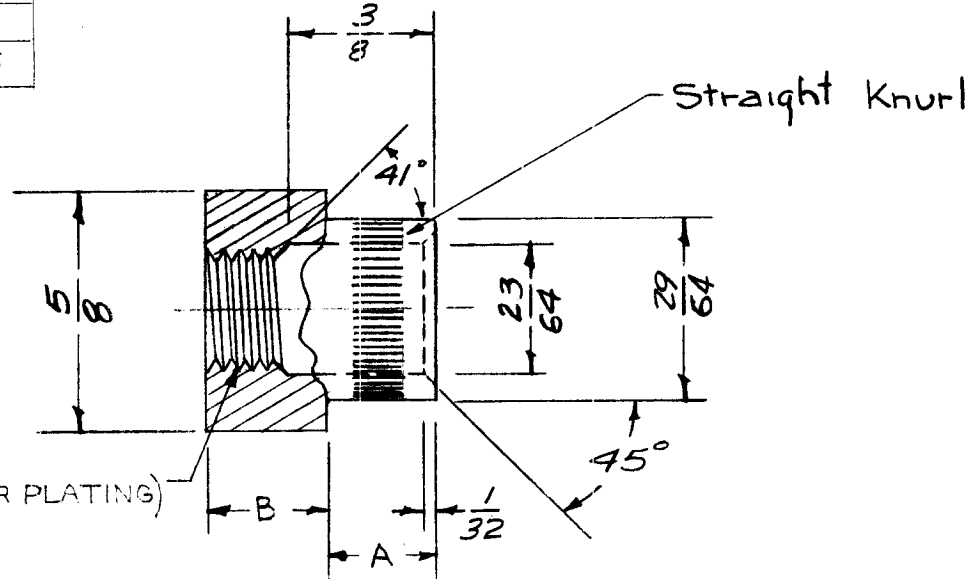


FOR 1/8 MATERIAL

REQ. PER UNIT	USED ON		
	MODEL	ASS'Y. NO.	DATE
6	GPT-750		10-10-57
7	RTX-2		9-17-58
2	GPT-10K	AX-103	1-24-59

NT-124 E

	A	B
NT124	.188	.312
NT124-2	.125	.375

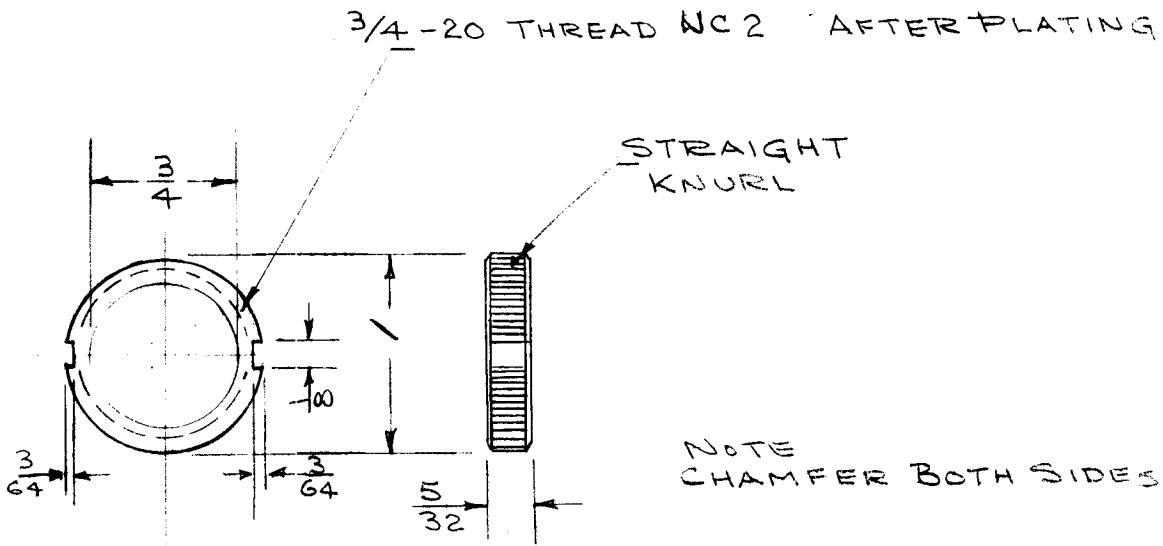


E		ADDED DIM. CHART, NT124, NT124-2, CHGD. 5/16 TO 3/16 & ADDED A TO PICT. DELE. 1/2 DIM.	7-28-66	16653	RME	<i>[Signature]</i>	<i>[Signature]</i>
D	1	HOLE DETAIL ADDED	12/9/59	1654	AB	<i>[Signature]</i>	<i>[Signature]</i>
C	1	Straight Knurl Added	6/4/69	1106	J.C.B.	<i>[Signature]</i>	<i>[Signature]</i>
B	3	23/64 WAS 21/64, 29/64 WAS 15/32, 1/2 WAS 19/32	10-21-58	497	J.C.B.	<i>[Signature]</i>	<i>[Signature]</i>
A	1	SPEC NO. CORRECTED	10/9/58	+	<i>[Signature]</i>	<i>[Signature]</i>	<i>[Signature]</i>

REQ. ITEM	PART NO.	DESCRIPTION	SYMBOL
		THE TECHNICAL MATERIEL CORP. MAMARONECK, NEW YORK	
		STOCK SIZE	
		BRASS	
		MATERIAL	
		CAPTIVE INSERT	
		16 10/10/57	<i>[Signature]</i>
			<i>[Signature]</i>
		TYPE & TEMPER	HEAT TREAT. SPEC.
		S-135 Bright Nickel Plate	
		FINISH & SPEC. NO.	
		DRAWN	CHECKED
		FINAL APPROVAL	
		NT-124 E	

ISSUE	ITEM	CHANGED FROM	DATE	CH. NO.	DRAFTS	CHECKER	ENG. APP.
TOLERANCES		SCALE: 2X					
DEC. DIM. ± .005		MAXIMUM ALLOWABLE TOLERANCES HAVE BEEN DETERMINED AND ANY DEVIATIONS WILL BE CAUSE FOR REJECTION. REMOVE ALL BURRS AND SHARP EDGES					
FRAC. DIM. ± 1/64							
ANGULAR DIM. ±							

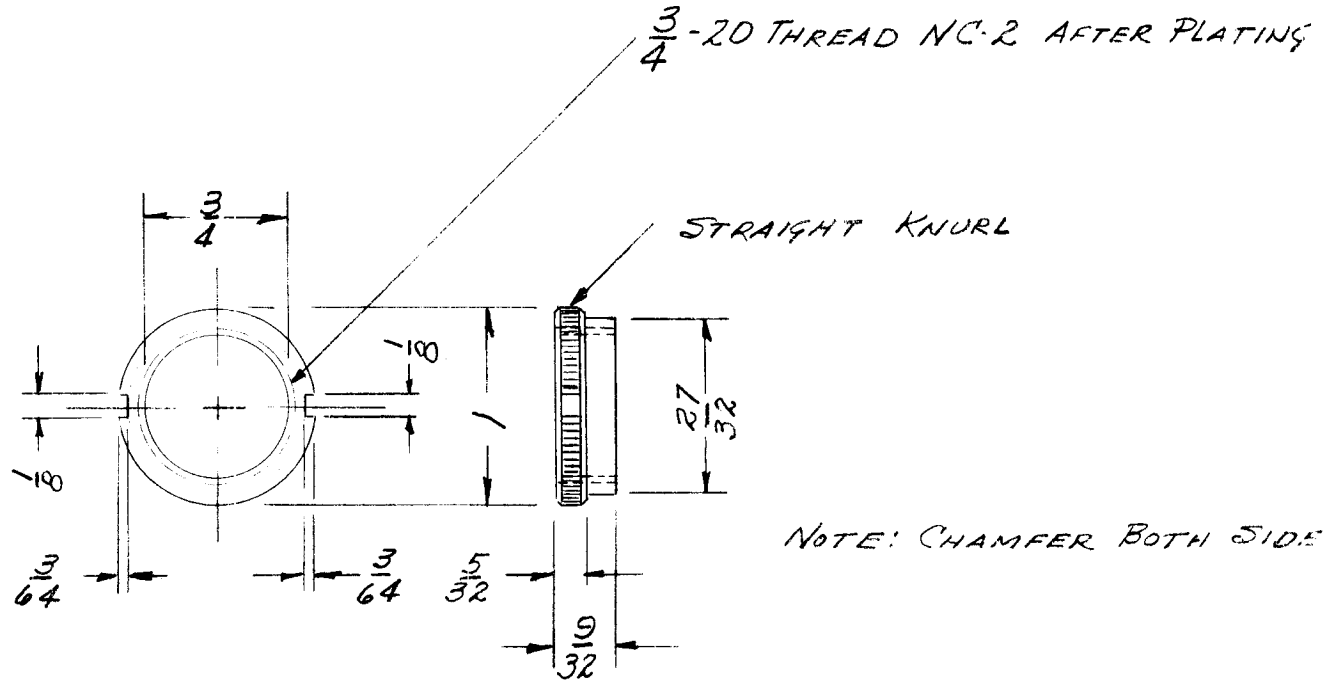
REQ. PER UNIT	USED ON			NT-125	A
	MODEL	ASS'Y. NO.	DATE		
1		JJ-161			
1		JJ-162			



FINISH ~  
SILVER PLATE  
LIGHT RHODIUM

ISSUE	ITEM	CHANGED FROM	DATE	CH. NO.	DRAFTS	CHECKER	ENG. APP.	REQ.	ITEM	PART NO.	DESCRIPTION	SYMBOL		
											THE TECHNICAL MATERIEL CORP. MAMARONECK. NEW YORK	NUT, KNURLED		
A	1	LIGHT RHODIUM ADDED TO FINISH	4-10-61	4621	11/67	<i>J. H. ...</i>	<i>...</i>							
TOLERANCES			SCALE: S-401-70-(3325-12)											
DEC. DIM. ± FRAC. DIM. ± ANGULAR DIM. ±			MAXIMUM ALLOWABLE TOLERANCES HAVE BEEN DETERMINED AND ANY DEVIATIONS WILL BE CAUSE FOR REJECTION. REMOVE ALL BURRS AND SHARP EDGES							TYPE & TEMPER	HEAT TREAT. SPEC.	DRAWN	CHECKED	FINAL APPROVAL
										SEE NOTE			<i>[Signature]</i>	NT-125
										FINISH & SPEC. NO.	ELEC. DES. APP.	MECH. DES. APP.		A

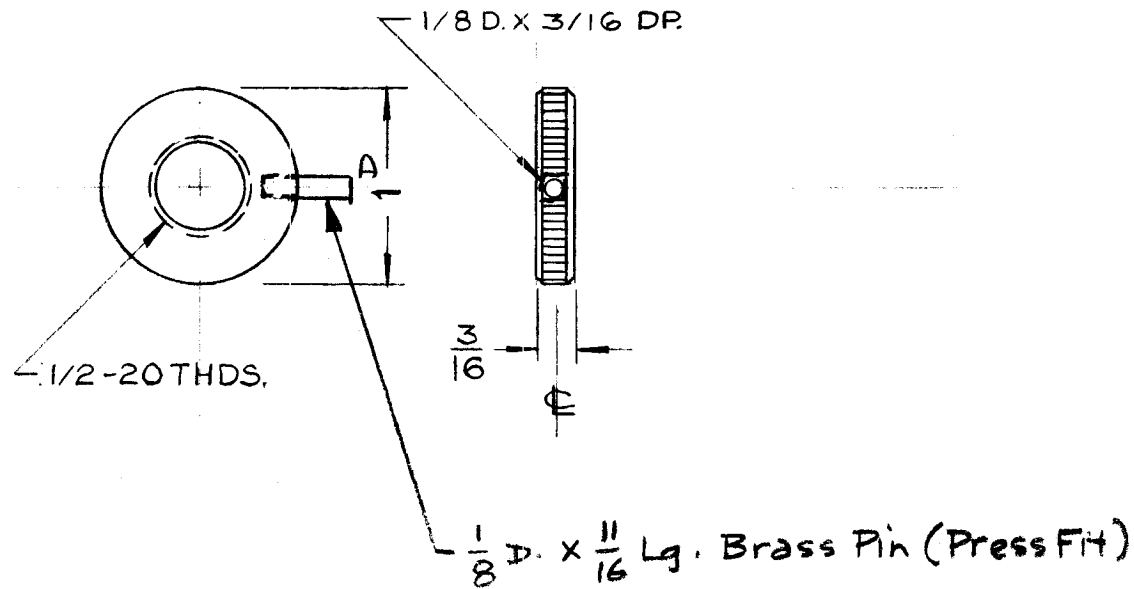
REQ. PER UNIT	USED ON			NT-127	A
	MODEL	ASS'Y. NO.	DATE		
1	JJ-165		8-6-58		



FINISH ~  
SILVER PLATE  
LIGHT RHODIUM

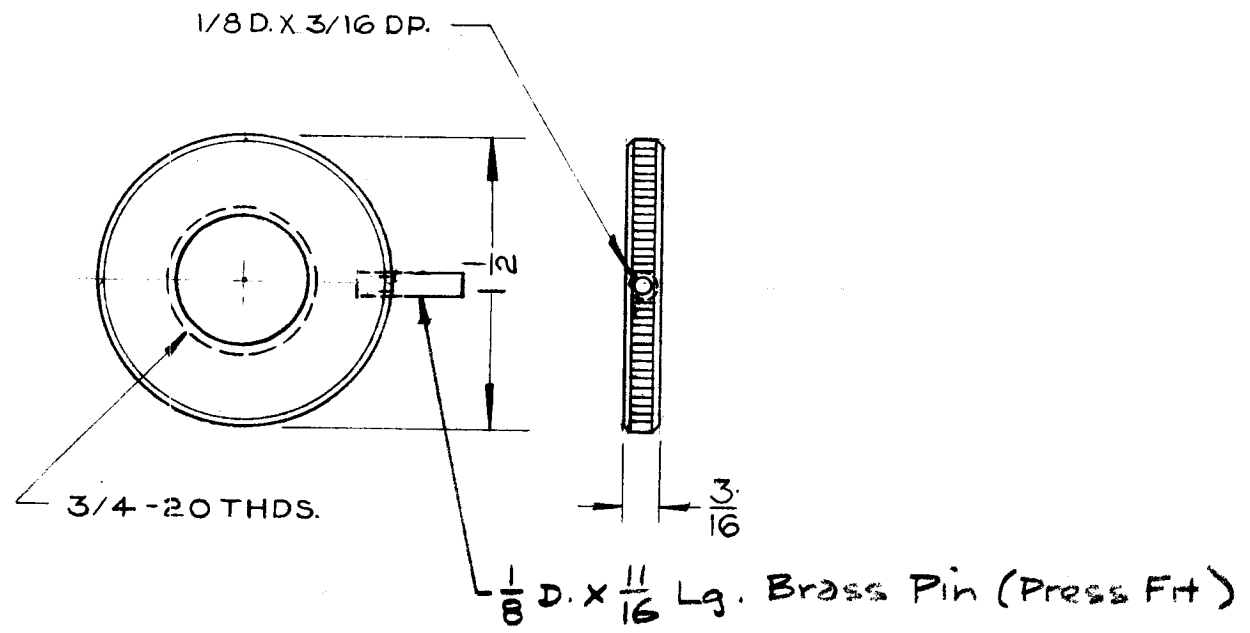
ISSUE	ITEM	CHANGED FROM	DATE	CH. NO.	DRAFTS	CHECKER	ENG. APP.	REQ. ITEM	PART NO.	DESCRIPTION	SYMBOL	
										THE TECHNICAL MATERIEL CORP. MAMARONECK, NEW YORK		
									STOCK SIZE	SCREW NUT, KNURLED		
A	-	LIGHT RHODIUM ADDED	8/10/61	4621	WF	JIO	ahno		BRASS			
TOLERANCES			SCALE: 5-401-70 - (2226-12)									
DEC. DIM. ± FRAC. DIM. ± AN ULAR DIM. ±			MAXIMUM ALLOWABLE TOLERANCES HAVE BEEN DETERMINED AND ANY DEVIATIONS WILL BE CAUSE FOR REJECTION. REMOVE ALL BURRS AND SHARP EDGES									
								TYPE & TEMPER	HEAT TREAT. SPEC.	DRAWN	CHECKED	FINAL APPROVAL
								SEE NOTE				
								FINISH & SPEC. NO.	ELEC. DES. APP.	MECH. DES. APP.	NT-127	A

REQ. PER. UNIT	USED ON			NT-130
	MODEL	ASSY. NO.	DATE	
2	GPT-40K	AT-101	3-22-60	



								REQ.	ITEM	PART NO.	DESCRIPTION	SYMBOL							
										THE TECHNICAL MATERIEL CORP. MAMARONECK, NEW YORK									
								STOCK SIZE		NUT, KNURLED,									
								BRASS		ANT. TUNER ROTOR ADJUST									
								MATERIAL											
ISSUE	ITEM	CHANGED FROM	DATE	CH. NO.	DRAFTS	CHECKER	ENG. APP.			CU		DB							
TOLERANCES			SCALE: FULL																
DEC. DIM. ±			MAXIMUM ALLOWABLE TOLERANCES HAVE BEEN DETERMINED AND ANY DEVIATIONS WILL BE CAUSE FOR REJECTION. REMOVE ALL BURRS AND SHARP EDGES					TYPE & TEMPER		HEAT TREAT. SPEC.		DRAWN		CHECKED		FINAL APPROVAL			
FRAC. DIM. ± 1/64								NICKEL PLATE .0002						V6		NT-130			
ANGULAR DIM. ±								FINISH & SPEC. NO.		ELEC. DES. APP		MECH. DES. APP							

REQ. PER UNIT	USED ON			NT-131
	MODEL	ASS'Y. NO.	DATE	
2	GPT-40K	AX-209	3-22-60	



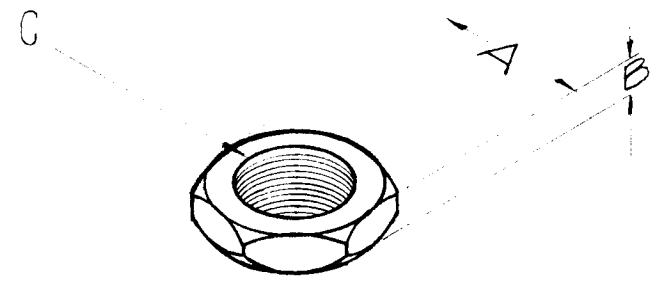
							REQ.	ITEM	PART NO.	DESCRIPTION			SYMBOL					
							STOCK SIZE			THE TECHNICAL MATERIEL CORP.								
							BRASS			MAMARONECK, NEW YORK								
							MATERIAL			NUT, KNURLED,								
										PA. ROTOR BANDSW, ADJUST								
ISSUE	ITEM	CHANGED FROM	DATE	CH. NO.	DRAFTS	CHECKER	ENG. APP.			cy								
TOLERANCES			SCALE: FULL															
DEC. DIM. ±			MAXIMUM ALLOWABLE TOLERANCES HAVE BEEN DETERMINED AND ANY DEVIATIONS WILL BE CAUSE FOR REJECTION. REMOVE ALL BURRS AND SHARP EDGES				TYPE & TEMPER		HEAT TREAT. SPEC.		DRAWN		CHECKED		FINAL APPROVAL			
FRAC. DIM. ± 1/64							NICKEL PLATE .0002						16					
ANGULAR DIM. ±							FINISH & SPEC. NO.										NT-131	
									ELEC. DES. APP		MECH. DES. APP							

TMC PT. NO. "A" "B" "C" MAT'L & FINISH  
 ACROSS FLATS THICKNESS THREADS

REQ. PER UNIT	USED ON		
	MODEL	ASSY. NO.	DATE
	JJ-14Z		4-10-61

NT-133

NT-133-1 1 IN. 5/32 3/4-20, NC 2 BRASS, SILVER PLATE AFTER PLATING & LIGHT RHODIUM FLASH



NOTE —  
 FOR USE WITH QDS PANEL AND BULKHEAD CONNECTORS.

REQ.	ITEM	PART NO.	DESCRIPTION	SYMBOL
			THE TECHNICAL MATERIEL CORP. MAMARONECK, NEW YORK	
			NUT, HEXAGON DOUBLE CHAMFER	
			John C Biele	
			TYPE & TEMPER	
			HEAT TREAT. SPEC.	
			FINISH & SPEC. NO.	
			ELEC. DES. APP	
			MECH. DES. APP	

ISSUE	ITEM	CHANGED FROM	DATE	CH. NO.	DRAFTS	CHECKER	ENG. APP.

DEC. DIM. ±	MAXIMUM ALLOWABLE TOLERANCES HAVE BEEN DETERMINED AND ANY DEVIATIONS WILL BE CAUSE FOR REJECTION.
FRAC. DIM. ± 1/64	REMOVE ALL BURRS AND SHARP EDGES
ANGULAR DIM. ±	

TOLERANCES	SCALE: S-401-70-(862-12)
------------	--------------------------

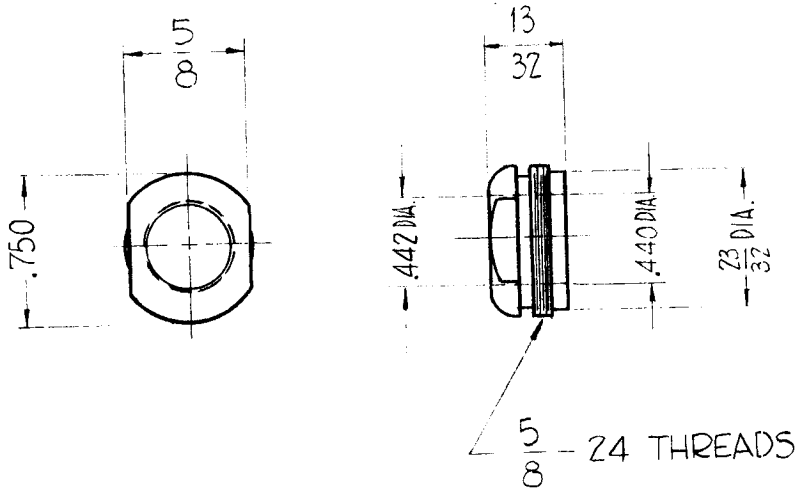
  

John C Biele	Checked	Final Approval
	AMG	NT-133



REQ. PER UNIT	USED ON		
	MODEL	ASSY. NO.	DATE
			4-10-61

NT-134



SPECIFICATIONS

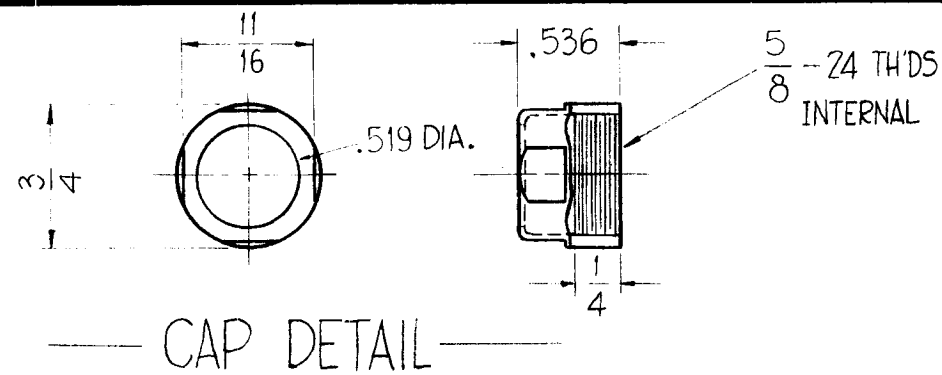
MATERIAL -  
BRASS

FINISH -  
SILVER PLATED AND RHODIUM FLASHED.

REF: FOR USE W/ RG-8/U + RG-11/U,  
MATES W/ QDS CONNECTORS

								REQ.	ITEM	PART NO.	DESCRIPTION	SYMBOL				
											THE TECHNICAL MATERIEL CORP.					
											MAMARONECK, NEW YORK					
											NUT, ADAPTOR					
											CABLE TO CONNECTOR					
ISSUE	ITEM	CHANGED FROM	DATE	CH. NO.	DRAFTS	CHECKER	ENG. APP.				John C. Biele					
TOLERANCES			SCALE: S-401-70-(573-12)													
DEC. DIM. ±			MAXIMUM ALLOWABLE TOLERANCES HAVE BEEN DETERMINED AND ANY DEVIATIONS WILL BE CAUSE FOR REJECTION. REMOVE ALL BURRS AND SHARP EDGES													
FRAC. DIM. ± 1/64																
ANGULAR DIM. ±																
								FINISH & SPEC. NO.		ELEC. DES. APP	MECH. DES. APP	NT-134				

REQ. PER UNIT	USED ON		NT-135
	MODEL	ASSY. NO.	
			4-11-61



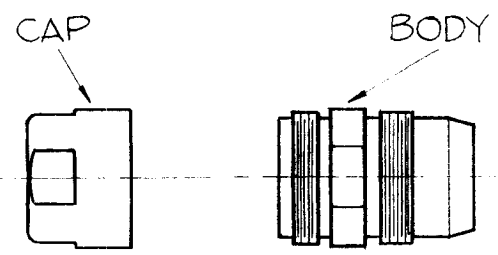
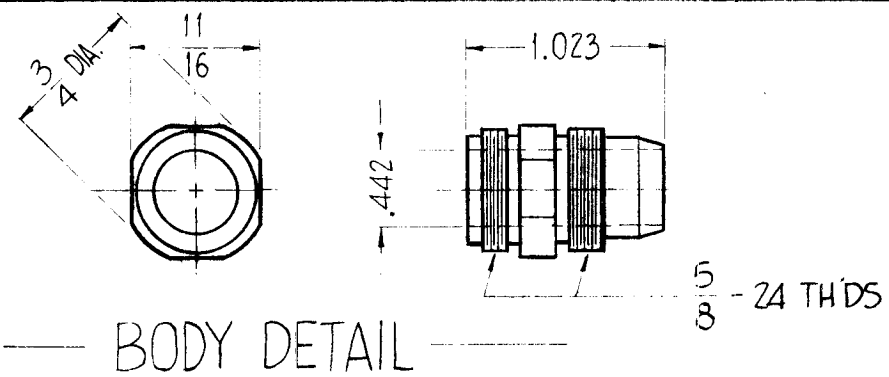
SPECIFICATIONS

CAP

MATERIAL - BRASS, FINISH - SILVER PLATED AND RHODIUM FLASHED.

BODY

MATERIAL - BRASS, FINISH - SILVER PLATED AND RHODIUM FLASHED.

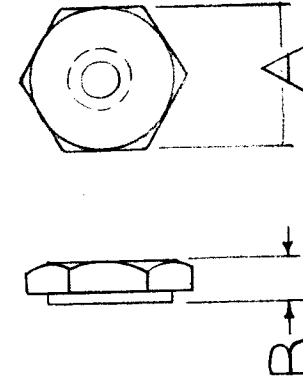


FOR USE W/ RG-10/U & RG-12/U  
MATES W/ QDS PLUGS

ISSUE	ITEM	CHANGED FROM	DATE	CH. NO.	DRAFTS	CHECKER	ENG. APP.	REQ.	ITEM	PART NO.	DESCRIPTION	SYMBOL
											THE TECHNICAL MATERIEL CORP. MAMARONECK, NEW YORK	
											NUT, ARMOR ADAPTOR CABLE TO CONNECTOR	
											John C. Biele	
											CHECKED	FINAL APPR VAL
												NT-135
											ELEC. DES. APP	MECH. DES. APP

THREAD CODE	THREAD SIZE	DIM.		REQ. PER. UNIT	USED ON			NT-137	C
		A	B		MODEL	ASSY. NO.	DATE		
0256	2-56	.187	1/16				9-27-61		
0440	4-40	.250	3/32						
0632	6-32	.312	7/64						
0832	8-32	.343	1/8						
1024	10-24	.375	1/8						
1032	10-32	.375	1/8						
2520	1/4-20	.437	7/32						
2528	1/4-28	.437	7/32						
3118	5/16-18	.500	3/16						
3124	5/16-24	.500	3/16						
5013	1/2-13	.750	7/16						

# STANDARD DRAWING



NUTS WILL BE :

DOUBLE C'SUNK  
SINGLE CHAMFERED  
WASHER FACED

Nomenclature shall be in the following form  
NT- 137-0440

Mating Screws  
SC-143

REF: Gries Reproduce Corp, or Richo Plastics

Basic TMC  
Part No.

Thread  
Code

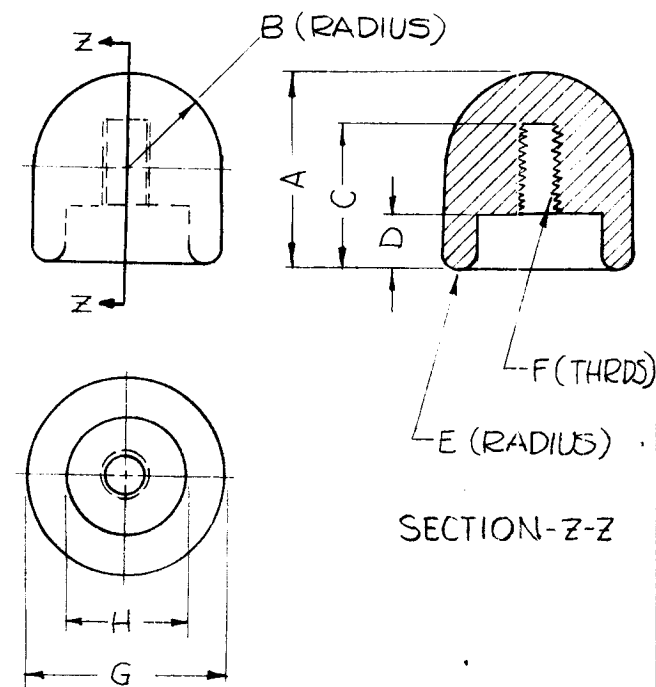
REQ.	ITEM	PART NO.	DESCRIPTION	SYMBOL					
C		ADDED 5013 THREAD	7-22-66 16620 RME						
B	1	2520 WAS 1520	10/17/63 10226						
A	1	5/16-18 WAS 5/15-18 ON "THREAD SIZE"	10-17-61 5727						
ISSUE	ITEM	CHANGED FROM	DATE	CH. NO.	DRAFTS	CHECKER	ENG. APP.		
TOLERANCES			SCALE:						
DEC DIM. ±			MAXIMUM ALLOWABLE TOLERANCES HAVE BEEN DETERMINED AND ANY DEVIATIONS WILL BE CAUSE FOR REJECTION.						
FRAC. DIM. ±			REMOVE ALL BURRS AND SHARP EDGES						
ANGULAR DIM. ±									
TYPE & TEMPER		HEAT TREAT. SPEC.		DRAWN		CHECKED		FINAL APPROVAL	
FINISH & SPEC. NO.		ELEC. DES. APP.		MECH. DES. APP.		NT-137		C	

**NOTE:**

1~ OPER. VOLTAGE IS THE PEAK VOLTAGE AT WHICH THE TERMINATION WILL OPERATE & REMAIN CORONA FREE AT SEA LEVEL AT 25°C.

REQ. PER UNIT	USED ON		NT-141	O
	MODEL	ASS'Y. NO.		
	GPT-200K		8-23-63	

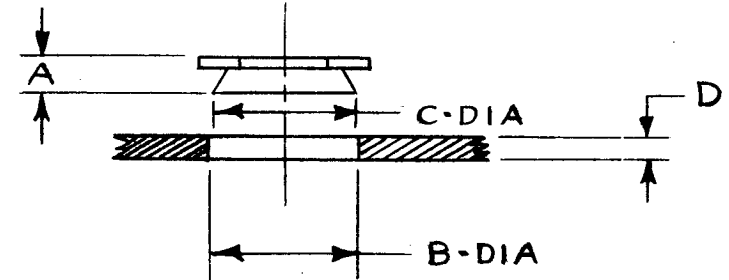
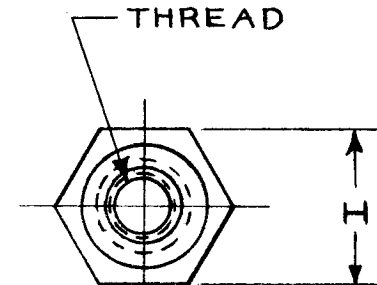
TMC NO.	USED ON	OPER. VOLT. (KV) SEE NOTE 1.	A	B	C	D	E	F	G	H
NT-141-1	200K	25	7/8	3/8	11/16	1/4	1/32	10-32	3/4	5/8
-2	200K	25	7/8	3/8	11/16	3/8	1/32	1/4-20	3/4	5/8
-3	200K	25	7/8	3/8	11/16	3/8	1/32	5/16-24	3/4	5/8



REQ. ITEM	PART NO.	DESCRIPTION	SYMBOL
		THE TECHNICAL MATERIEL CORP. MAMARONECK. NEW YORK	
	STOCK SIZE		
0	ORIGINAL RELEASE	5.16.64	KB
	BRASS		NUT, CAP, H.V. TERMINATION
SYM	DESCRIPTION	DATE	CH. NO. DRAFTS CHECKER ENG. APP.
UNLESS OTHERWISE SPECIFIED DIMENSIONS ARE IN INCHES AND INCLUDE CHEM/CALLY APPLIED OR PLATED FINISHES		SCALE	
DECIMALS .X ± .05 .XX ± .01 .XXX ± .005	TOLERANCES	FRACTIONS ± 1/64 ANGLES ± 0° 30'	CODE
			S401-89 (68 SERIES)
	CHROM. PLATE, HIGH POLISH		
	FINISH & SPEC. NO.	ELEC. DES. APP.	MECH. DES. APP.
		SRG	aa RSC
		DRAWN	CHECKED
			FINAL APPROVAL
			NT-141
			O

TMC PART NO NT-145-1	REQ. PER UNIT 2	USED ON			NT-145
		MODEL MNF-1	ASS'Y. NO. MS-3581	DATE 12-27-63	

TMC P/N	C	H	A	THREAD	HOLE B	SHEET THK-D*	MFG NO
NT-145-1	.171	3/16	.090	#4-40	.172 DIA	.091-.125	F440-2



SYMBOL	DESCRIPTION	DATE	CH. NO.	DRAFTS	CHECKER	ENG. APP.	REQ. ITEM	PART NO.	DESCRIPTION	SYMBOL		
								—H—	THE TECHNICAL MATERIEL CORP. MAMARONECK. NEW YORK			
								STOCK SIZE				
								#303 STAINLESS STEEL	NUT, PLAIN, SPLINE			
								MATERIAL	HEX. FLUSH TYPE			
								—H—				
	UNLESS OTHERWISE SPECIFIED DIMENSIONS ARE IN INCHES AND INCLUDE CHEM'CALLY APPLIED OR PLATED FINISHES	SCALE	—H—									
DECIMALS .X ± .05 .XX ± .01 .XXX ± .005	TOLERANCES	FRACTIONS ± 1/64 ANGLES ± 0° 30'	CODE C	S-401-260					PASSIVATED	DRAWN N. Peter	CHECKED R. J. ...	FINAL APPROVAL R. J. ...
								FINISH & SPEC. NO.	ELEC. DES. APP.	MECH. DES. APP.	NT-145	

# STANDARD DRAWING

REQ. PER UNIT

USED ON  
MODEL: RAC    ASS'Y. NO.: AIDD    DATE:

NT146

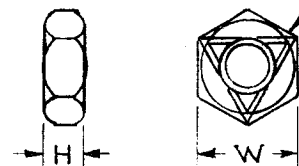
A

TMC PART NO.	MFRS PART NO.	PICTORIAL STYLE	THD SIZE UN-2B	DIMENSIONS		MATERIAL	FINISH	SEE NOTE 1	
				W WIDTH	H HEIGHT			PREVAILING TORQUE IN-LB MAX	BREAKAWAY TORQUE IN-LB MIN
NT146-1	SPECIAL	A	1/4 -20	7/16	1/8	BRASS	NONE	12	4

**1. TORQUE TEST**

- A. SAMPLE NUT SHOULD BE ASSEMBLED WITH HAND TORQUE WRENCH ON UNDRILLED BOLT WITH CLASS 2A THDS AND SAME FINISH AS NUT.
- B. USE A NEW BOLT FOR EACH NUT.
- C. PREVAILING TORQUE: THE ON-TORQUE AT FIRST INSTALLATION, READ WITH NO LOAD ON TEST BOLT, WITH NUT IN MOTION, AND THE BOLT PROTRUDING THROUGH NUT BETWEEN TWO AND THREE THREADS.
- D. BREAKAWAY TORQUE: TORQUE REQUIRED TO START NUT IN MOTION TO REMOVE AFTER CHECKING PREVAILING TORQUE

3 TOP DEFLECTIONS FOR UNIFORM LOCKING TORQUE



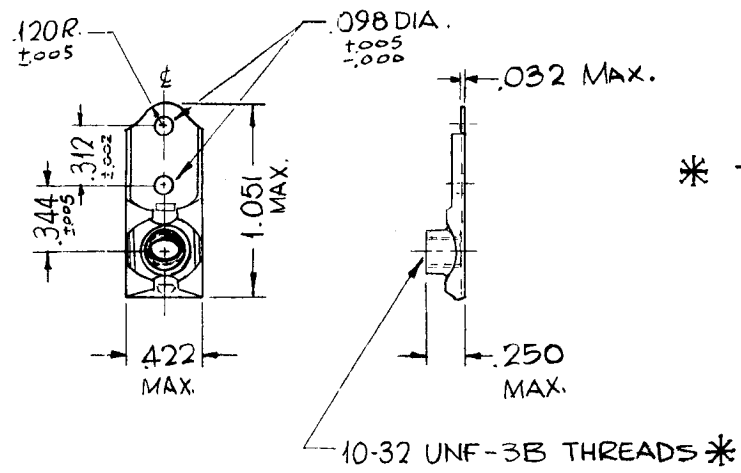
STYLE A  
DOUBLE CHAMFER

REQ.	ITEM	PART NO.	DESCRIPTION	SYMBOL								
			THE TECHNICAL MATERIEL CORP. MAMARONECK, NEW YORK									
A	CLERICAL CHANGE	824.64	STOCK SIZE									
0	ORIGINAL RELEASE FOR PRODUCTION	3/5/64										
			NUT, SELF-LOCKING, HEXAGON									
SYM	DESCRIPTION	DATE	CH. NO.	DRAFTS	CHECKER	ENG. APP.	MATERIAL					
UNLESS OTHERWISE SPECIFIED DIMENSIONS ARE IN INCHES AND INCLUDE CHEMICALLY APPLIED OR PLATED FINISHES		SCALE						3.9.64	WB	JDC 3/5/64	RDC 3/9/64	
DECIMALS .X ± .05 .XX ± .01 .XXX ± .005		FRACTIONS ± 1/64 ANGLES ± 0° 30'		CODE C		S-401-270		TYPE & TEMPER	HEAT TREAT. SPEC.	DRAWN	CHECKED	FINAL APPROVAL
TOLERANCES										JDC 3/5/64		NT146
								FINISH & SPEC. NO.	ELEC. DES. APP.	MECH. DES. APP.		A

# STANDARD DRAWING

REQ. PER UNIT	USED ON		
	MODEL	ASS'Y. NO.	DATE
2	GPT-200K(AT-105)	A-2765	3-19-64
1	GPT-200K(AT-105)	A-2766	3-19-64

NT 147 | A

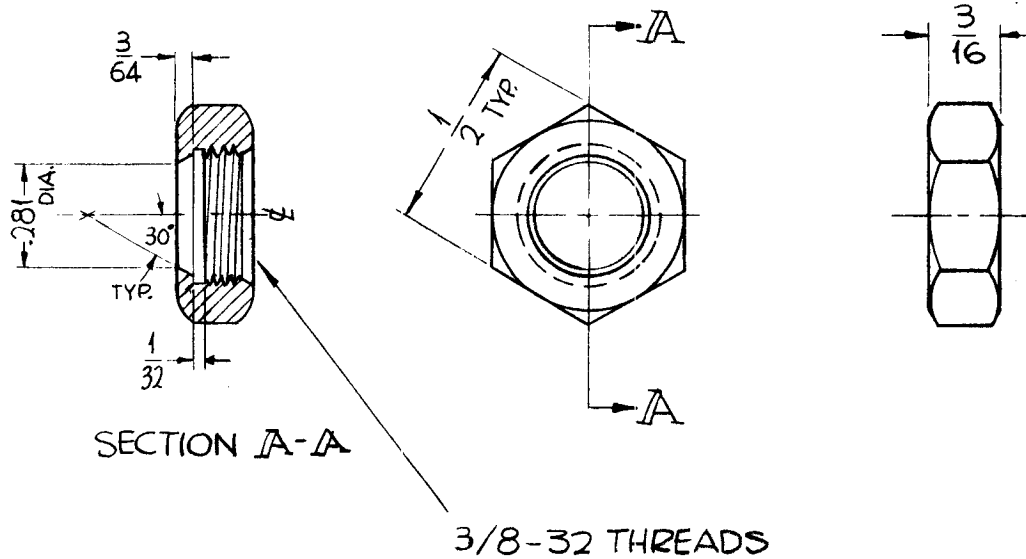


\* THREADED PORTION ELLIPTICALLY DEFORMED

MFG. PART NO. LH7A517-2860-02 REF. MIL STD MS21061

SYM	DESCRIPTION	DATE	CH. NO.	DRAFTS	CHECKER	ENG. APP.	REQ. ITEM	PART NO.	F. BUDETTI	DESCRIPTION	SYMBOL
A	GEN. REVISED & UPDATED	5-2-66	16187	HJA	qcb	jc				<b>THE TECHNICAL MATERIEL CORP.</b> MAMARONECK, NEW YORK NUT, FLOATING SELF LOCKING	A
O	ORIGINAL RELEASE FOR PRODUCTION	5-13-64	O	A.M.							
UNLESS OTHERWISE SPECIFIED DIMENSIONS ARE IN INCHES AND INCLUDE CHEMICALLY APPLIED OR PLATED FINISHES							SCALE 1"=1"		SRG aa RUC		
DECIMALS .X ± .05 .XX ± .01 .XXX ± .005							TOLERANCES		FRACTIONS ± 1/64 ANGLES ± 0° 30'		
CODE C							S401-290		CAD PLATE		
							FINISH & SPEC. NO.		ELEC. DES. APP. MECH. DES. APP.		
									DRAWN CHECKED FINAL APPROVAL		
									NT 147		

REQ. PER UNIT	USED ON			NT-148	O
	MODEL	ASS'Y. NO.	DATE		
1	GPT-200K	A-	4-20-64		



MATES WITH PM-1011

REF: ALLAN BRADLEY #B13750

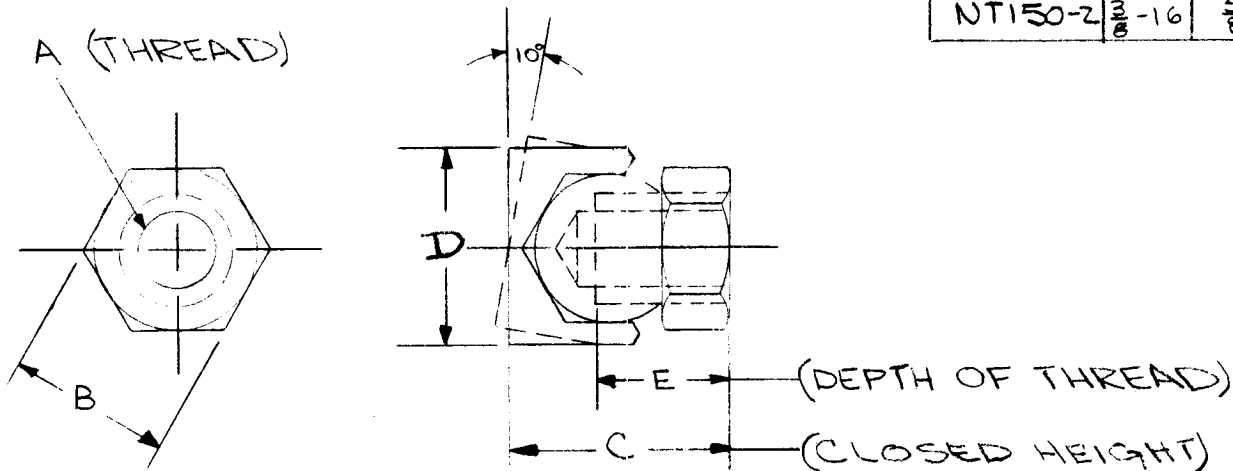
REQ.	ITEM	PART NO.	F. BUDETTI	DESCRIPTION	SYMBOL
				THE TECHNICAL MATERIEL CORP. MAMARONECK. NEW YORK	
				STOCK SIZE	
				BRASS	
				MATERIAL	
				SRG	
				TYPE & TEMPER	
				HEAT TREAT. SPEC.	
				DRAWN	
				CHECKED	
				FINAL APPROVAL	
				NICKEL PLATED	
				FINISH & SPEC. NO.	
				ELEC. DES. APP.	
				MECH. DES. APP.	
				NT-148	O



# STANDARD DRAWING

REQ. PER UNIT	USED ON			NT150 ∅
	MODEL	ASS'Y. NO.	DATE	
	GPT 10KLF		8-24-66	

TMC P/N	A	B	C	D	E	MFG P/N
NT150-1	$\frac{1}{4}$ -20	$\frac{1}{2}$	$\frac{5}{16}$	$\frac{5}{8}$	$\frac{13}{32}$	RP-1
NT150-2	$\frac{3}{16}$ -16	$\frac{5}{8}$	$\frac{13}{16}$	$\frac{3}{4}$	$\frac{1}{2}$	RP-3



SYM	DESCRIPTION	DATE	CH. NO.	DRAFTS	CHECKER	ENG. APP.	REQ. ITEM	PART NO.	DESCRIPTION	SYMBOL
									<b>THE TECHNICAL MATERIEL CORP.</b> MAMARONECK, NEW YORK NUT, SWIVEL PAD	
								STOCK SIZE		
								STEEL		
								MATERIAL		
								SAE 1113 OR EQUIV.	EANZA <i>8/23/65</i> DRAWN CHECKED	<i>8/23/65</i> FINAL APPROVAL
								CADMIUM PLATE TYPE 1 CLASS C	<i>8/25/65</i> MECH. DES. APP.	NT150 ∅
								FINISH & SPEC. NO.		
UNLESS OTHERWISE SPECIFIED DIMENSIONS ARE IN INCHES AND INCLUDE CHEMICALLY APPLIED OR PLATED FINISHES		SCALE		DO NOT SCALE						
DECIMALS .X ± .05 .XX ± .01 .XXX ± .005		FRACTIONS ± 1/64 ANGLES ± 0° 30'		CODE		SA01-360(RP)				
TOLERANCES										

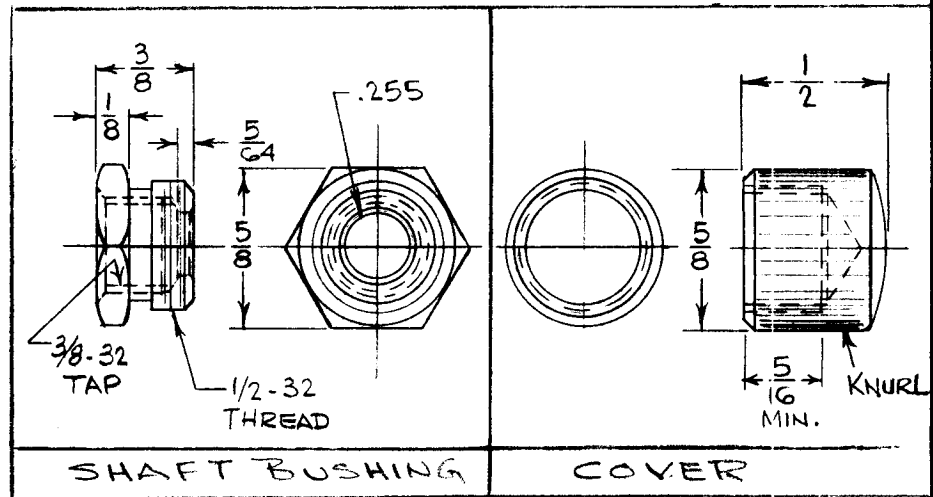
TMC PART NO	MFG PART NO	
NT-152-1	2142-1-02	

REQ. PER UNIT	USED ON		NT152	⌀
	MODEL	ASSY. NO.		
	CHGR-3		5-25-65	

REPLACED BY NT153  
6/11/65 jc

MATERIAL & FINISH

COMPONENT	MATERIAL	FINISH
SHAFT BUSHING	BRASS	NICKEL PLATE .0003 OR BLACK OXIDE
*COVER	BRASS	NICKEL PLATE .0003 OR BLACK OXIDE

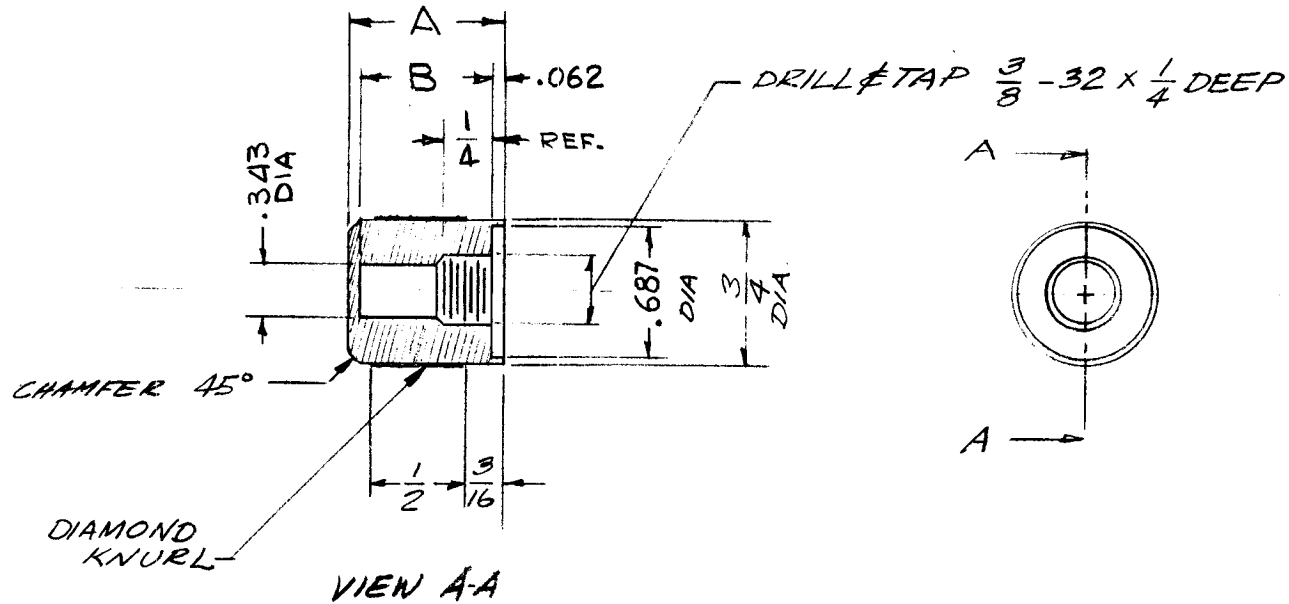


\* COVER  
POLISHED HEAD, NICKEL PLATED COVER ONLY

REQ.	ITEM	PART NO.	DESCRIPTION	SYMBOL
			THE TECHNICAL MATERIEL CORP. MAMARONECK. NEW YORK	
			STOCK SIZE	
			SHAFT BUSHING & COVER	
			MATERIAL	
			TYPE & TEMPER	
			HEAT TREAT. SPEC.	
			DRAWN	
			CHECKED	
			FINAL APPROVAL	
			ELEC. DES. APP.	
			MECH. DES. APP.	
			NT152	⌀

TMC PART No.	DIMENSION		USED ON	REQ. PER UNIT	USED ON			NT153	Ø
	A	B			MODEL	ASS'Y. NO.	DATE		
NT153 -1	13/16	11/16	CHGR-3A				4-27-65		

## STANDARD DRAWING



SYM	DESCRIPTION	DATE	CH. NO.	DRAFTS	CHECKER	ENG. APP.	REQ. ITEM	PART NO.	J. ANGER DESCRIPTION	SYMBOL	
							3/4 DIA.		THE TECHNICAL MATERIEL CORP. MAMARONECK, NEW YORK		
							STOCK SIZE			CAP, NUT	
Ø	ORIGINAL RELEASE	4-27-65	Ø	G.D.L.			ALUMINUM				
							MATERIAL				
	UNLESS OTHERWISE SPECIFIED DIMENSIONS ARE IN INCHES AND INCLUDE CHEMICALLY APPLIED OR PLATED FINISHES		SCALE					2024-T4	G. D. L.	  4/27/65	
			1:1					TYPE & TEMPER	DRAWN		CHECKED
	DECIMALS	FRACTIONS	CODE					5120 BLACK ANODIZED			
	.X ± .05	± 1/64	A					FINISH & SPEC. NO.	ELEC. DES. APP.	MECH. DES. APP.	NT153
	.XX ± .01	ANGLES									Ø
	.XXX ± .005	± 0° 30'									

# STANDARD DRAWING

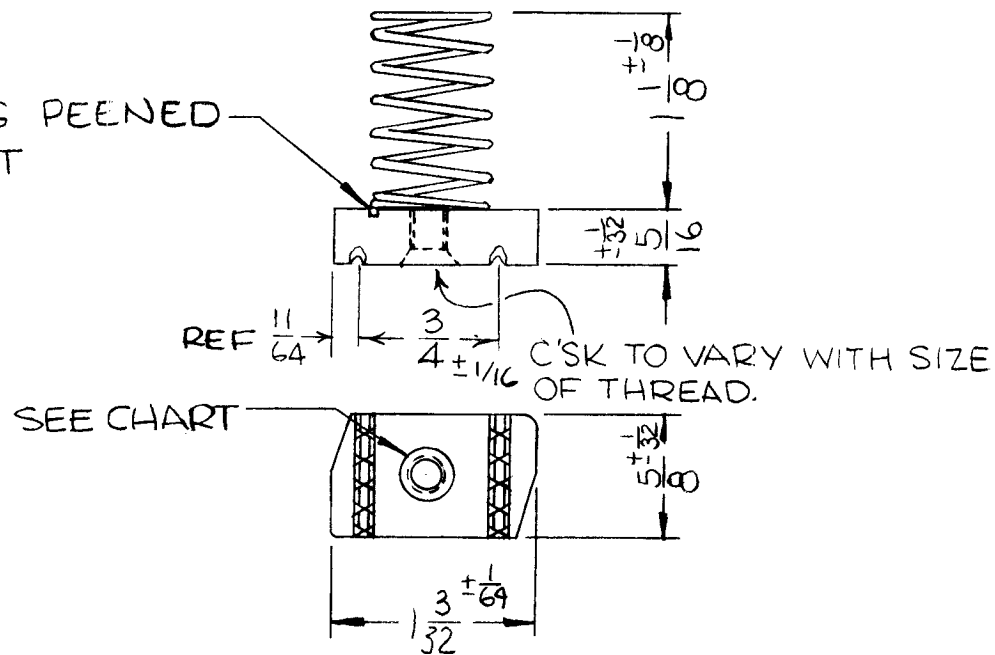
TMC PART NO.	MFG P/N	C'SK & THD
NT155-0832	A1006-0832	8-32
NT155-1032	A1006-1032	10-32
NT155-2520	A1006-2520	1/4-20
NT 55-3118	A1007	5/16-18

REQ. PER UNIT	USED ON		
	MODEL	ASS'Y. NO.	DATE
	TST()2.5K		4-18-66
	ATLA-2.5		

NT155



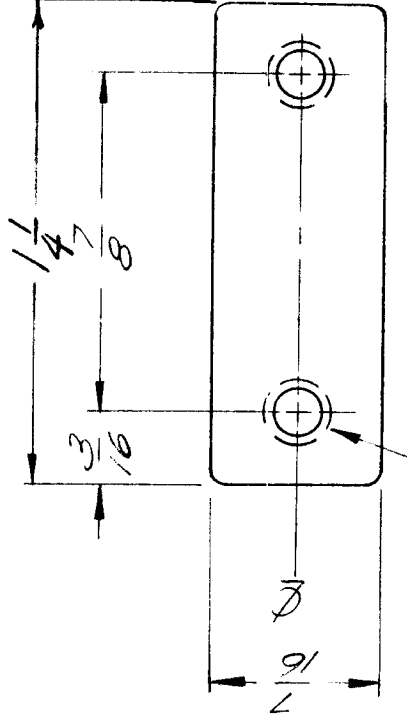
SPRING PEENED TO NUT



MATERIEL :  
 NUT - H.B. STEEL  
 SPRING - SAE-1060  
 HARD DRAWN SPRING  
 STEEL WIRE GALV.

REQ.	ITEM	PART NO.	BUDETTI	DESCRIPTION	SYMBOL
		SEE NOTE		THE TECHNICAL MATERIEL CORP.	
		STOCK SIZE		MAMARONECK.	
		SEE NOTE		NEW YORK	
				NUT, SPRING	
Ø	ORIGINAL RELEASE FOR PRODUCTION	5/12/66	Jc	PCB	
SYM	DESCRIPTION	DATE	CH. NO.	DRAFTS	CHECKER
UNLESS OTHERWISE SPECIFIED DIMENSIONS ARE IN INCHES AND INCLUDE CHEMICALLY APPLIED OR PLATED FINISHES		SCALE S401-429			
DECIMALS	TOLERANCES	FRACTIONS	CODE		
.X ± .05		± 1/64			
.XX ± .01		ANGLES			
.XXX ± .005		± 0° 30'			
				TYPE & TEMPER	HEAT TREAT. SPEC.
				DRAWN	CHECKED
				FINAL APPROVAL	
				FINISH & SPEC. NO.	ELEC. DES. APP.
				MECH. DES. APP.	NT155

APPLICATION		REVISIONS							
QTY	MODEL USED ON	ASS'Y NO.	LTR	DESCRIPTION	DATE	E.M.N.NO	DRAFT	CHKD	APPD
4	PALA-10K	AX5054	X2	REEDOWN	10/20/68		K-T-T		
			Ø	ORIGINAL RELEASE	11/6/70		Ø		



DRILL & TAP  
#4 - 40 THD.  
( 2 REQ. )

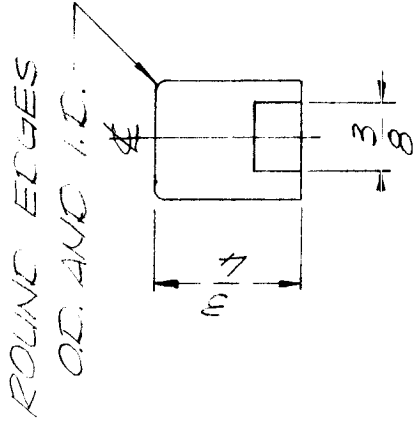
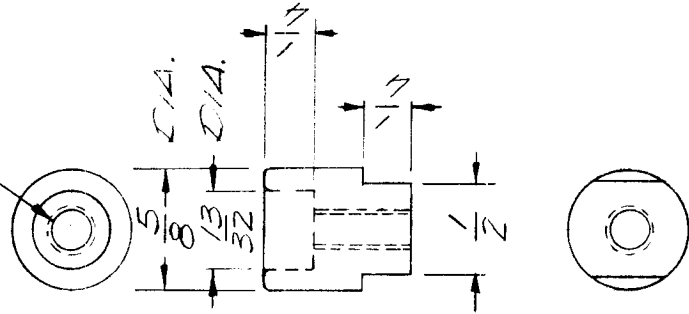
NOTE :

REMOVE ALL BURRS & SHARP EDGES.

REQ'D	ITEM	PART NUMBER	DESCRIPTION	SYM.
F. BUDETTI LIST OF MATERIAL				
UNLESS OTHERWISE SPECIFIED DIMENSIONS ARE IN INCHES AND INCLUDE CHEMICALLY APPLIED OR PLATED FINISHES		THE TECHNICAL MATERIEL CORP. MAMARONECK, NEW YORK		
DECIMALS	FRACTIONS	MATERIAL		
.X ± .05	TOLS. 1/64	FINAL APPROVAL	DATE	ISSUE
.XX ± .01	ANGLES 0° .30'	MECH. DES.	DATE	Ø
.XXX ± .005		ELECT. DES.	DATE	
FINISH		CHECKED	DATE	
NATURAL		DRAWN	DATE	
NOTICE TO PERSONS RECEIVING THIS DRAWING		SCALE 2:1		
THE TECHNICAL MATERIEL CORPORATION claims proprietary right in the material disclosed hereon. This drawing is issued in confidence for engineering information only and may not be reproduced or used to manufacture anything shown hereon without permission from THE TECHNICAL MATERIEL CORPORATION to the user. This drawing is loaned for mutual assistance and is subject to recall at any time.		SIZE		
		CODE IDENT. NO. DWG NO.		
		A 82679 NT 157		
		NUT, BAR ANGULAR		

APPLICATION			REVISIONS						
QTY	MODEL USED ON	ASSY NO.	LTR	DESCRIPTION	DATE	E.M.N.NO	DRAFT	CHKD	APPD
4	PALA 10 K	AX5096	X	EXP RELEASE	4.30.70		GE		
			Ø	ORIG RELEASE FOR PPOD	10/14/71		RG		

DRILL & TAP THREE FOR 1/4 - 20 THD.

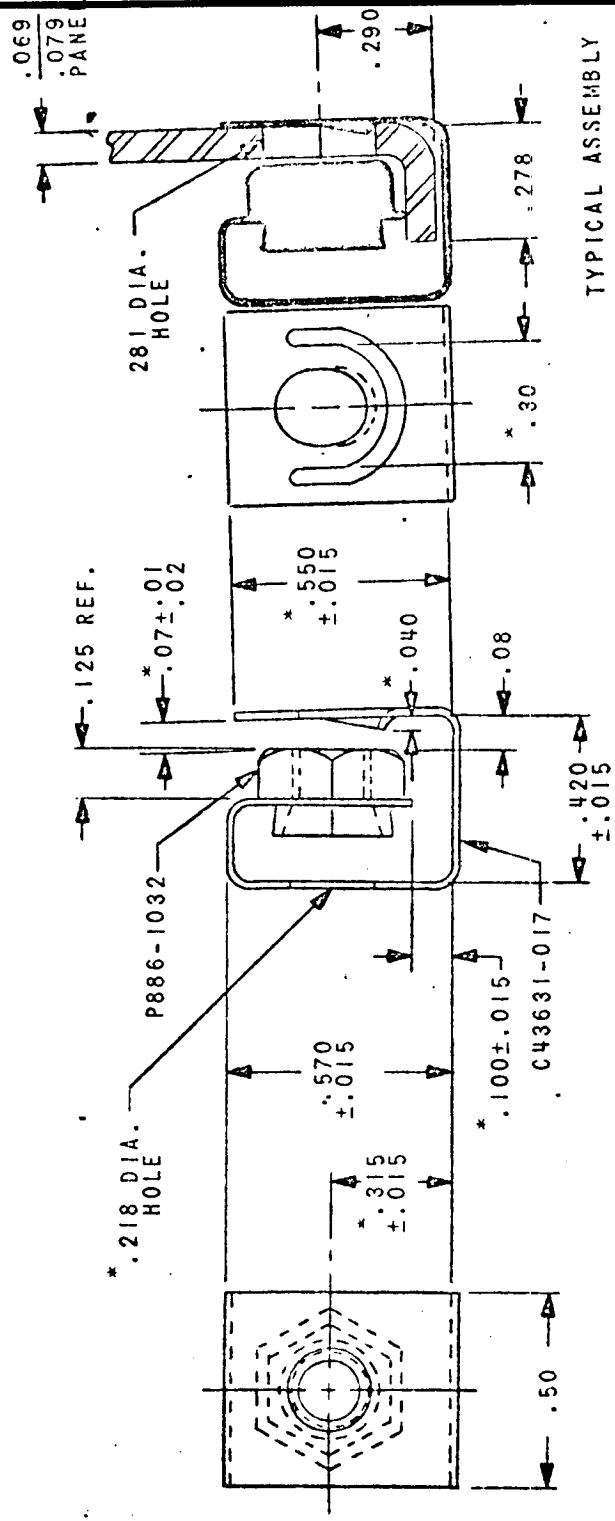


UNLESS OTHERWISE SPECIFIED DIMENSIONS ARE IN INCHES AND INCLUDE CHEMICALLY APPLIED OR PLATED FINISHES	REQ'D	ITEM	PART NUMBER	DESCRIPTION	SYM.
DECIMALS .X ± .05 .XX ± .01 .XXX ± .005 FRACTIONS 1/64 TOLS. ANGLES 0°-30°				LIST OF MATERIAL	
MATERIAL BRASS				THE TECHNICAL MATERIEL CORP. MAMARONECK, NEW YORK	
FINISH S-135 NICKEL PLATE				NUT, ROUND	
FINAL APPROVAL MECH. DES. ELECT. DES. CHECKED DRAWN					
DATE DATE DATE DATE DATE					
F. BUDETTI					
EVANGELIST					

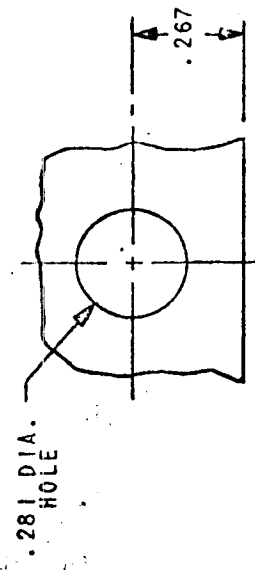
SIZE	CODE IDENT. NO.	DWG NO.	ISSUE
A	82679	NT 159	Ø
SCALE 1:1		SHEET	OF

NOTICE TO PERSONS RECEIVING THIS DRAWING  
 THE TECHNICAL MATERIEL CORPORATION claims proprietary right in the material disclosed hereon. This drawing is issued in confidence for engineering information only and may not be reproduced or used to manufacture anything shown hereon without permission from THE TECHNICAL MATERIEL CORPORATION to the user. This drawing is loaned for mutual assistance and is subject to recall at any time.

APPLICATION			REVISIONS						
QTY	MODEL USED ON	ASS'Y NO.	LTR	DESCRIPTION	DATE	E.M.N.NO	DRAFT	CHKD	APPD
			Ø		11/7/73		DV		



TYPICAL ASSEMBLY



RECOMMENDED HOLE LAYOUT IN .060-.070 FLAT PANEL

MFR (TMC CODE NO.): S401-76  
MFR PART NO.: C-31758-1032-24

UNLESS OTHERWISE SPECIFIED DIMENSIONS ARE IN INCHES AND INCLUDE CHEMICALLY APPLIED OR PLATED FINISHES	REQ'D ITEM	PART NUMBER	DESCRIPTION	SYM.
DECIMALS X ± .05 .XX ± .01 .XXX ± .005			LIST OF MATERIAL	
FRACTIONS 1/64			THE TECHNICAL MATERIEL CORP. MAMARONECK, NEW YORK	
ANGLES Ø-30°			NUT, RETAINER	
MATERIAL	FINAL APPROVAL	DATE		
FINISH	MECH. DES.	DATE		
	ELECT. DES.	DATE		
	CHECKED	DATE		
	DRAWN	DATE		

NOTICE TO PERSONS RECEIVING THIS DRAWING THE TECHNICAL MATERIEL CORPORATION claims proprietary right in the material disclosed hereon. This drawing is issued in confidence for engineering information only and may not be reproduced or used to manufacture anything shown hereon without permission from THE TECHNICAL MATERIEL CORPORATION to the user. This drawing is loaned for mutual assistance and is subject to recall at any time.		SIZE	CODE IDENT. NO.	DWG NO.	ISSUE
A	82679		NT 161		
SCALE		SHEET	OF		

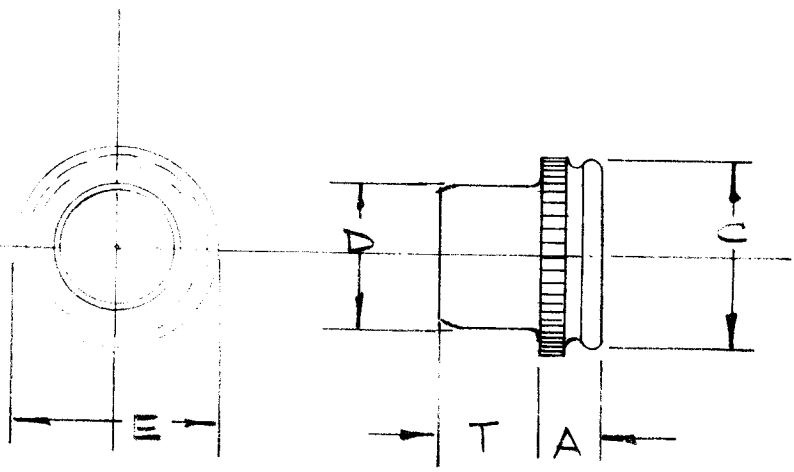




NT 10002

ISSUE	ITEM	CHANGED FROM	DATE	CN. NO.	DRAFTS	CHECKER	ENG. APP.	REQ.	ITEM	PART NO.	DESCRIPTION	SYMBOL
Ø		REL TO PROD	NOV 29/68		AD		<i>[Signature]</i>					

PART NO.	THD. SIZE	A (MAX)	C (+.002 / -.005)	D (MAX)	E	T (+.015 / -.000)	SHEET HOLE SIZE	MIN. DIST. CENTER TO EDGE	MIN. SHEET THICKNESS	TMC P/N
FE-140	4-40	.060	.171	.140	3/16	.065	.172 / .175	9/64	.040	-1
FE-632	6-32	.060	.213	.175	1/4	.075	.213 / .216	11/64	.040	-2
FE-832	8-32	.060	.289	.215	5/16	.090	.290 / .293	13/64	.060	-3
FE-032	10-32	.060	.289	.245	5/16	.110	.290 / .293	13/64	.060	-4
FE-0420	1/4-20	.060	.343	.318	3/8	.120	.344 / .347	9/32	.060	-5
FE-0428	1/4-28	.060	.343	.318	3/8	.120	.344 / .347	9/32	.060	-6



THREAD - CLASS 3B MIL-S-7742  
 PERFORMANCE - MIL-N-25037B

# STANDARD DRAWING

MANUFACTURED - S401-260

MODEL		PROJECT NO.		ASS'Y. NO.		DATE 28 NOV. 68		STOCK SIZE		TMC (Canada) LIMITED OTTAWA ONTARIO	
USED ON						303 ST. ST.		MATERIAL		MINIATURE FASTENER	
MAXIMUM ALLOWABLE TOLERANCES HAVE BEEN DETERMINED AND DEVIATIONS WILL BE CAUSE FOR REJECTION. REMOVE ALL BURRS AND SHARP EDGES						IF IT IS FOUND DESIRABLE TO CHANGE ANY TOLERANCE OR OTHER DETAIL SPECIFIED ON THIS DRAWING NOTIFY THE PURCHASER PROMPTLY.					
TOLERANCES						SCALE		TYPE & TEMPER		BARTLETT	
ALL OTHERS						DIMENSIONS IN INCHES UNLESS OTHERWISE SPECIFIED		HEAT TREAT. SPEC.		DRAWN	
DEC. DIM. ± .05						DRILL PUNCH, COMMERCIAL STOCK SIZES AND MANUFACTURERS TOLERANCES ARE NOT INCLUDED.		PASSIVATED		ELEC. APP.	
FRAC. DIM. ± 1/64								FINISH & SPEC. NO.		MECH. DEL. APP.	
ANGULAR DIM. ± 0° 30'										CHECKED	
										FINAL APPROVAL	
										NT 10002 Ø	