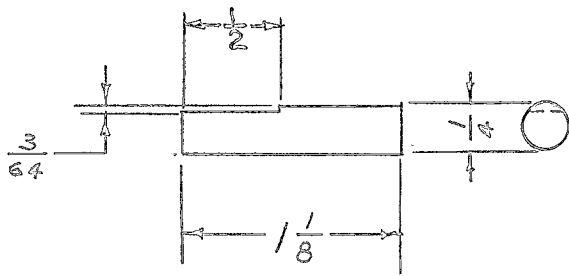


IF IT IS FOUND DESIRABLE TO CHANGE ANY TOLERANCE OR OTHER DETAIL SPECIFIED ON THIS DRAWING NOTIFY THE PURCHASER PROMPTLY.

PX-158 B

MAXIMUM ALLOWABLE TOLERANCES HAVE BEEN DETERMINED AND DEVIATIONS WILL BE CAUSE FOR REJECTION. REMOVE ALL BURRS AND SHARP EDGES

REQ. PER UNIT	USED ON			
	MODEL	PROJECT NO.	ASS'Y. NO.	DATE
1	VOX		A-585	2-9-55
1	VOX-1-2			2-9-55



REQ.	ITEM	PART NO.	DESCRIPTION	SYMBOL
		$\frac{1}{4}$ ROD	THE TECHNICAL MATERIEL CORP.	
		STOCK SIZE	MAMARONECK. NEW YORK	
	LAMITEX	#	MOTOR DRIVE	
	MATERIAL	WEIGHT PER PC.	EXTENSION SHAFT	
		GRADE XXX		
		TYPE & TEMPER	P.B. 2-9-55	
			DRAWN	ELEC. DES. APP. MECH. DES. APP.
		HEAT TREAT. SPEC.	JA	
		BLACK	✓ CHECKED	FINAL APPROVAL
		FINISH & SPEC. NO.		PX-158 B

+	+	CHANGED FROM	DATE	CN. NO.	DRAFTS	CHECKER	ENG. APP.
		REDRAWN - N.C.	2-9-55	#	P.B.	JA	WDC

TOLERANCES		SCALE
ALL OTHERS	DEC. DIM. \pm FRAC. DIM. \pm $\frac{1}{64}$ ANGULAR DIM. \pm	DRILL, PUNCH, COMMERCIAL STOCK SIZES AND MANUFACTURERS TOLERANCES ARE NOT INCLUDED.