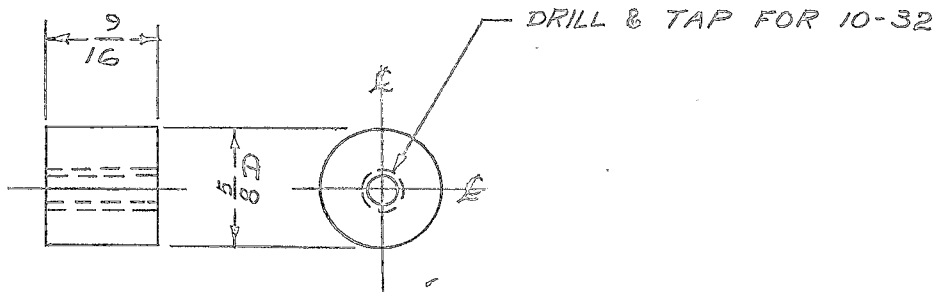


IF IT IS FOUND DESIRABLE TO CHANGE ANY TOLERANCE OR OTHER DETAIL SPECIFIED ON THIS DRAWING NOTIFY THE PURCHASER PROMPTLY.

PX-162 B

MAXIMUM ALLOWABLE TOLERANCES HAVE BEEN DETERMINED AND DEVIATIONS WILL BE CAUSE FOR REJECTION. REMOVE ALL BURRS AND SHARP EDGES

REQ. PER UNIT	USED ON			
	MODEL	PROJECT NO.	ASS'Y. NO.	DATE
8	PMO-1 PMO-2	285		1-19-55
8	VOX	101		1-19-55
8	VOX-1 VOX-2	291		1-19-55
8	RTF			2-1-56
8	RTF-2			11-10-56



REF: FRANKLIN FIBRE CO.

REQ.	ITEM	PART NO.	DESCRIPTION	SYMBOL
		5/8 D.	THE TECHNICAL MATERIEL CORP. MAMARONECK, NEW YORK	
		STOCK SIZE		
		PHENOLIC	INNER & OUTER SHELL SPACERS (OVEN ASSY.)	
		MATERIAL		
		XXX	P.B. 1-19-55	
		TYPE & TEMPER	DRAWN	ELEC. DES. APP. MECH. DES. APP.
		HEAT TREAT. SPEC.	CHECKED	FINAL APPROVAL
		NATURAL		PX-162 B
		FINISH & SPEC. NO.		

ISSUE	ITEM	CHANGED FROM	DATE	CN. NO.	DRAFTS	CHECKER	ENG. APP.
B	1	MAT. WAS KKK LAMITEK	10/10/56	2	JAK	CCC	
A	2	TYPE & TEM. WAS PBE	2-25-55	1	P.B.	JAK	
	1	REDRAWN-REF. ADDED					

TOLERANCES		SCALE
ALL OTHERS	DEC. DIM. ± FRAC. DIM. ± 1/64 ANGULAR DIM. ±	DRILL, PUNCH, COMMERCIAL STOCK SIZES AND MANUFACTURERS TOLERANCES ARE NOT INCLUDED.