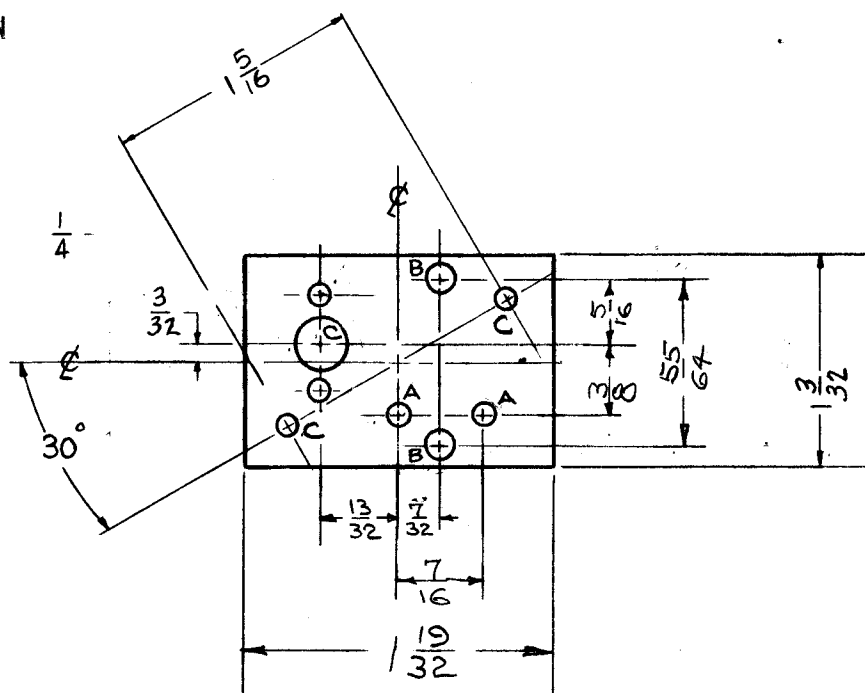


PERSONS RECEIVING THIS DRAWING

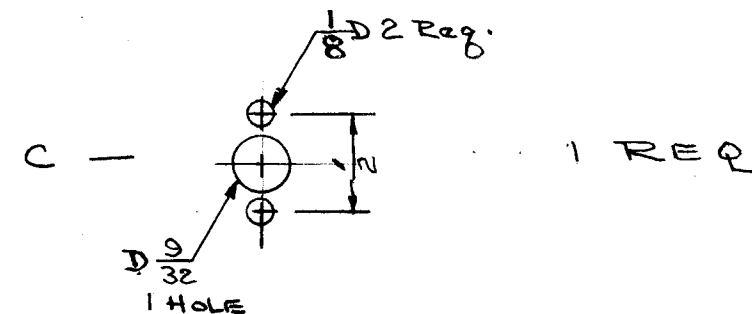
THE TECHNICAL MATERIEL CORPORATION claims proprietary right in the material disclosed hereon. This drawing is issued in confidence for engineering information only and may not be reproduced or used to manufacture anything shown hereon without permission from THE TECHNICAL MATERIEL CORPORATION to the user. This drawing is loaned for mutual assistance and is subject to recall at any time.

Property of:  
THE TECHNICAL MATERIEL CORPORATION  
MAMARONECK, NEW YORK



HOLE LEGEND

- A - 1/8 (.125) DIA.                      2 HOLES REQ.
- B - 5/32 (.156) DIA.                    2 " " "
- C - .116 DIA.                              2 HOLES



ISSUE	ITEM	CHANGED FROM	DATE	CH. NO.	DRAFTS	CHECKER	ENG. APP.
A	1	Two "C" Holes Added Replacing Two "A" Holes	12/9/58	567	JL		at/16
TOLERANCES			SCALE:				
DEC. DIM. ±			MAXIMUM ALLOWABLE TOLERANCES HAVE BEEN DETERMINED AND ANY DEVIATIONS WILL BE CAUSE FOR REJECTION.				
FRAC. DIM. ± 1/64			REMOVE ALL BURRS AND SHARP EDGES				
ANGULAR DIM. ± 2°							

REQ. PER UNIT	1	MODEL	A-1591	PROJECT NO.		ASS'Y. NO.		DATE	11-10-58
USED ON									

REQ. ITEM	PART NO.	DESCRIPTION	SYMBOL
	1/8	THE TECHNICAL MATERIEL CORP. MAMARONECK, NEW YORK	
	STOCK SIZE		
	PHENOLIC	MOUNTING BOARD, TOP	
MATERIAL			
XXXP		J.C. BIELE	
TYPE & TEMPER	HEAT TREAT. SPEC.	DRAWN	CHECKED
NATURAL			
FINISH & SPEC. NO.		ELEC. DES. APP.	MECH. DES. APP.
		PX-422	A